



KOONENBERRY GOLD

Discovering Gold and Copper in NSW

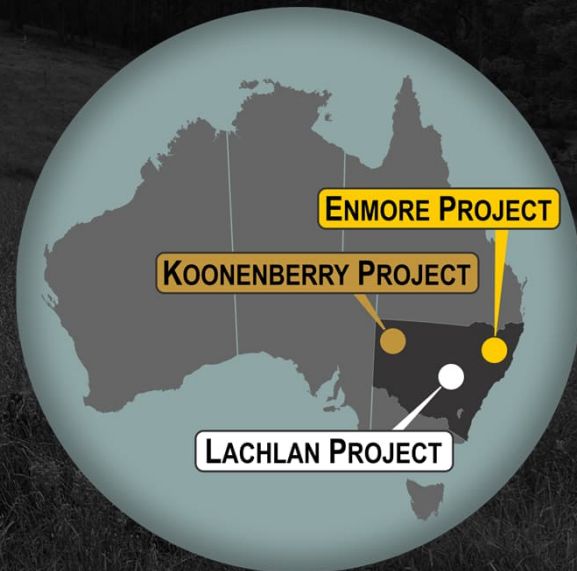
Investor Presentation
August 2025

Dan Power
Managing Director

ASX: KNB



SUBSCRIBE



Disclaimer

General information only

This presentation contains general background information and summary information about Koonenberry Gold Limited (ACN 619 137 576) (“Koonenberry”) and its activities as at the date of this presentation. None of the members of Koonenberry or their or Koonenberry’s respective advisors, affiliates, related bodies corporate, directors, officers, partners, consultants, employees and agents (“Other Persons”) have authorised, permitted or caused the issue, submission, dispatch or provision of this presentation and none of them makes or purports to make any statement in this presentation. To the maximum extent permitted by law, Koonenberry and the Other Persons expressly exclude and disclaim all liability, including without limitation for fault or negligence on the part of any person, or for any expenses, losses, damages or costs incurred as a result of the use of this presentation or its contents and the information in this presentation being inaccurate or incomplete in any way for any reasons, whether by negligence or otherwise.

To the maximum extent permitted by law, each of Koonenberry and the Other Persons make no representation or warranty, express or implied, as to the currency, accuracy, reliability or completeness of all or any part of all or any part of this document, or any constituent or associated presentation, information or material, or the accuracy, likelihood of achievement or reasonableness of any forecasts, prospects of returns contained in or implied by, the information in this presentation or any part of it. Except as required by applicable law or regulation, neither Koonenberry nor the Other Persons have any obligation to provide any additional or updated information, whether as a result of new information, future events or results or otherwise.

Forward looking statements

These materials include forward looking statements. Often, but not always, forward looking statements can be identified by the use of forward looking words such as “may”, “will”, “expect” “intend”, “plan”, “estimate”, “anticipate”, “continue”, “outlook” and “guidance” or other similar words and may include, without limitation, statements regarding plans, strategies and objectives of management, anticipated production or construction commencement dates and expected costs or production outputs.

Forward looking statements are based on Koonenberry and its Management’s good faith assumptions relating to the financial, market, regulatory and other relevant environments that will exist and affect Koonenberry’s business and operations in future. Koonenberry does not give any assurance that the assumptions on which forward looking statements are based will prove to be correct, or that Koonenberry’s business or operations will not be affected in any material manner by these or other factors not foreseen or foreseeable by Koonenberry or Management or beyond Koonenberry’s control. Although Koonenberry attempts and has attempted to identify factors that would cause actual actions, events or results to differ materially from those disclosed in forward looking statements, there may be other factors that could cause actual results, performance, achievements or events not to be as anticipated, estimated or intended, and many events are beyond the reasonable control of Koonenberry. Accordingly, readers are cautioned not to place undue reliance on forward looking statements. Forward looking statements in these materials speak only at the date of issue. Subject to any continuing obligations under applicable law in providing this information Koonenberry does not undertake any obligation to publicly update or revise any of the forward looking statements or to advise of any changes in events, conditions or circumstances on which any such statement is based.

Cautionary statement on visual estimates of mineralisation

Any references in this announcement to visual results are from visual estimates by qualified geologists. Laboratory assays are required for representative estimates of quantifiable elemental values. Visual estimates of mineral abundance should never be considered a proxy or substitute for laboratory analyses where concentrations or grades are the factor of principal economic interest. Visual estimates also potentially provide no information regarding impurities or deleterious physical properties relevant to valuations.

Proximate resources and statements

This announcement may contain references to other parties either nearby or proximate to Koonenberry Gold’s projects and/or references that may have topographical or geological similarities to Koonenberry Gold’s projects. It is important to note that such exploration results, discoveries or geological similarities do not in any way guarantee that the Company will have any exploration success at all, or in delineating a Mineral Resource on any of Koonenberry Gold’s Projects.

Competent Persons Statement

The information in this presentation that relates to previous Exploration Results was reported in accordance with the JORC Code and ASX Listing Rules in the Company’s ASX announcements set out in the slide labelled “References”.

The Company confirms that it is not aware of any new information or data that materially affects the information included in the relevant market announcements and, in the case of estimate of Mineral Resources, that all material assumptions and technical parameters underpinning the estimate in the relevant market announcement continue to apply and have not materially changed. The Company confirms that the information and context in which the Competent Person’s findings are presented have not been materially modified from the original market announcements.

No new exploration results are reported in this presentation.

This announcement has been approved for release by the Board of Koonenberry Gold Ltd.

Corporate Overview

Tightly held » Well funded to continue drilling success at Enmore

Capital Structure

ASX: KNB

Shares on issue* 1,025M

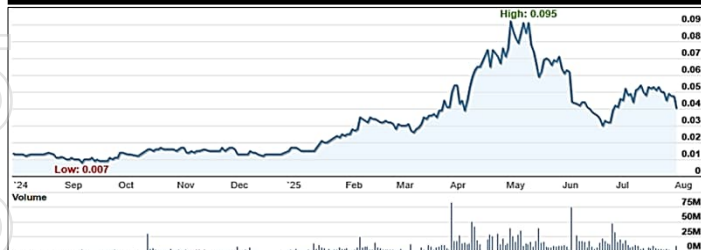
Share price (04/08/2025) 0.039

Market capitalisation

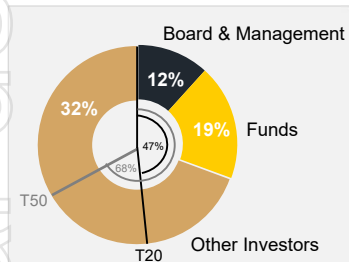
\$40.1M

Cash**

\$8.7M



Top 20 hold ~47% and Top 50 hold ~68% of the shares on issue (28/07/2025)



Cornerstone Investors



Board and Management

Experienced Team – Focused on Discovery



Paul Harris (BCom, M.MinEng, GAICD)
Chairman and Non-Executive Director

- Experienced professional with +25 years in finance and investment banking including Citibank (Head of Metals and Mining), Bankers Trust and Merrill Lynch
- Currently Non-Exec Chair of Highfield Resources



Dan Power (BSc Hons, MSc (Econ. Geol), MAICD, AIG, SEG)
Managing Director

- Geologist with 28 years' experience in exploration, project generation, evaluation and management in Australia, China, SE Asia, SW Pacific and Mongolia
- Former Newmont Country Manager and CEO of Tinline Mongolia



Anthony McIntosh (BCom, GAICD)
Non-Executive Director

- Extensive experience in investment marketing, investor relations and strategy
- Non-Executive Director of ASX-listed: Strategic Energy Resources as well as several unlisted and not-for-profit organisations



George Rogers (BIB)
Non-Executive Director

- Extensive experience in capital and commodity markets, investor relations and strategic planning as well as corporate strategy, advisory and M&A
- Formerly Managing Director of KNB. Co-founder and Director of White Hutt



Darren Glover (BSc Hons, AusIMM)
Non-Executive Director

- Geologist with 27 years' experience in minerals exploration, mining, resource definition and business development across Australia and Sth America
- Co-Founder of Gilmore Metals. Previous senior roles with Gold Fields, Newcrest, RGC.



Paul Wittwer (BSc Hons, AIG, AusIMM, SEG)
Exploration Manager

- Geologist with +20years' Australian and international experience in orogenic and epithermal gold systems as well as in silver and copper
- Formerly Thor Mining and Southern Gold Exploration Manager covering greenfields, near mine exploration, mine geology, resource modelling and development



Bryn Ellingworth (BSc Hons, MSc (Econ. Geol), AIG, SEG)
Principal Geologist

- Geologist with 10years' experience in mineral exploration and resource definition across various commodities and deposit styles including precious and base metals
- Strong background in NSW mineral systems with demonstrated success in the Lachlan Fold Belt and New England Fold Belt, NSW



Ed Saunders (BSc Hons, PhD)
Project Geologist

- Geologist with 20 years' industry and academia experience in gold and base metals
- Exploration experience across Australia and a research focus on the factors that contribute to the formation of gold and other precious metal deposits at a crustal scale

*Other securities on issue comprise 94 million options (KNBO) on issue (exercisable @ 4 cents by April 2026) and 10.6 million performance rights, exercisable on various milestones.

**Cash at 30/06/2025.

Koonenberry Gold

Investment Summary » Discovering Gold and Copper in NSW

ENMORE PROJECT » Discovery story emerging (100% owned)

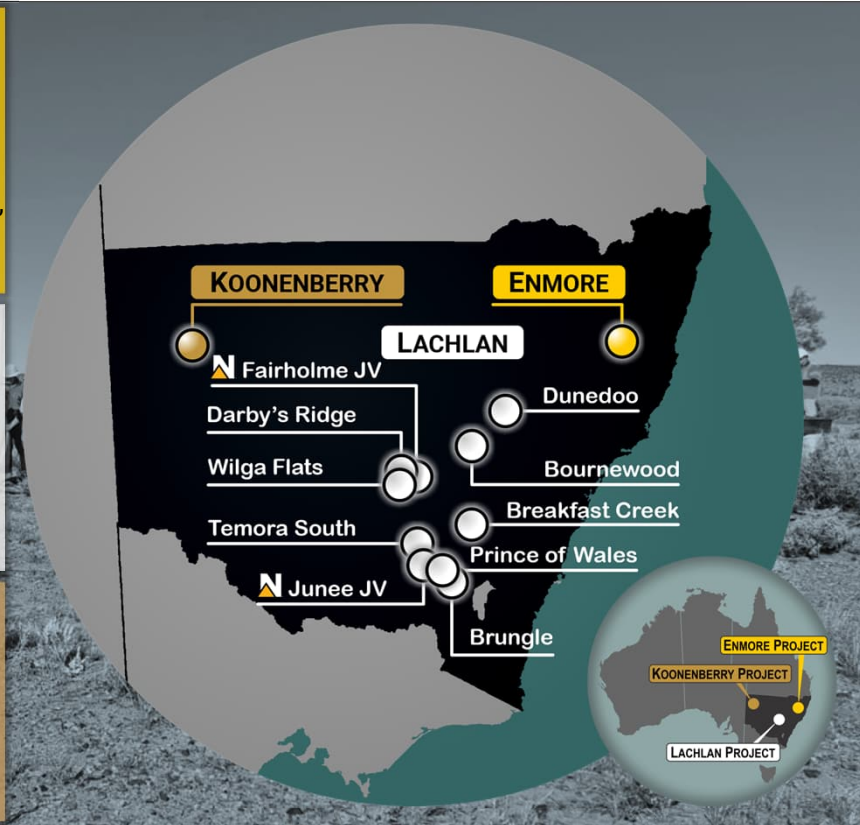
- 20km Sth of +1.7Moz gold-antimony Hillgrove Mine ⁽¹⁾
- Broad + high grade gold intercepts from surface to 300m vertical:
 - 170m @ 1.75g/t Au from 77m, inc. 18m @ 9.95g/t Au from 172.9m, inc. 0.3m @ 144.5g/t Au from 173.8m (25ENDD001) ⁽²⁾
 - 172.9m @ 2.07g/t Au from 171m, inc. 25m @ 5.23g/t Au from 194m, inc. 5m @ 11.09 g/t Au from 213m (25ENDD002) ⁽³⁾
- Phase II drilling ~late August start » 10,000m fully funded

LACHLAN PROJECT » 10 Project Areas (1,580km² EL's)

- Australia's premier Cu-Au belt (19Mt Cu, 110Moz Au) ⁽⁴⁾
- Good mix of epithermal, porphyry & high-grade skarn targets
- Multiple Au & Cu-Au discovery opportunities
- Two Active JVs with **Newmont** (Junee 20%, Fairholme 51%)
- Drilling at Junee JV & Fairholme JV Projects

KOONENBERRY PROJECT » Underexplored Frontier Belt (2,478km²)

- Highly prospective geological setting
- Extension of Western Victorian goldfields (Stawell Zone)
- Abundant evidence for gold mineralisation
- Pipeline of discovery opportunities
- Multi million ounce gold + copper potential



Enmore Project

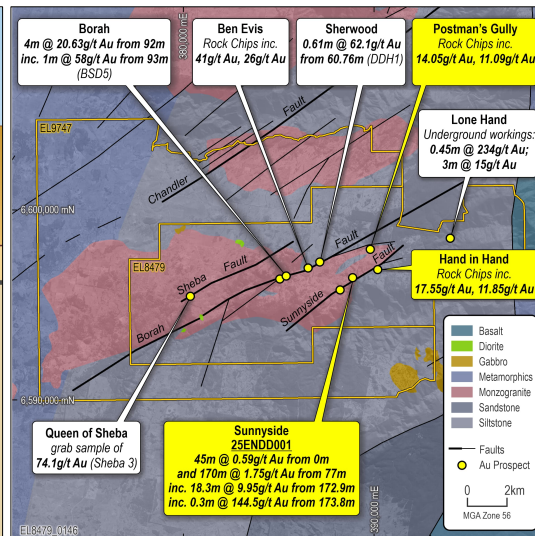
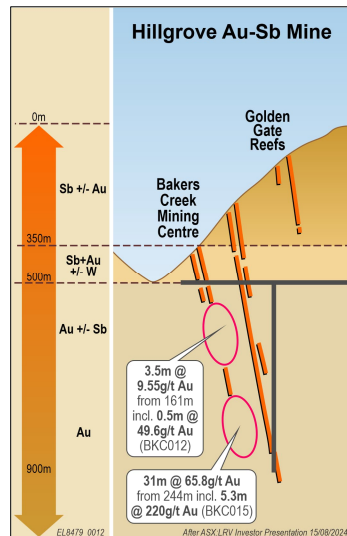
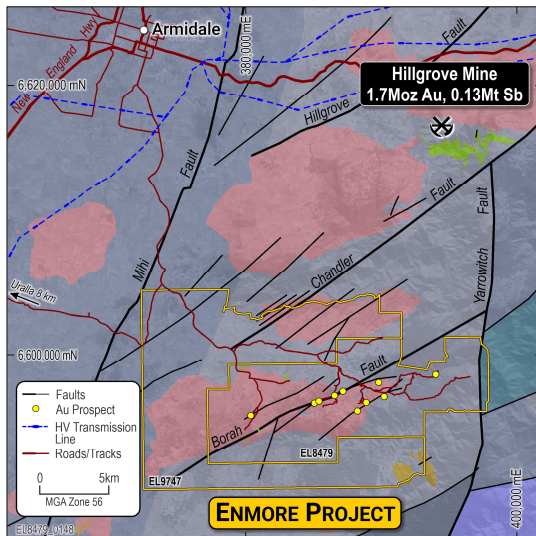
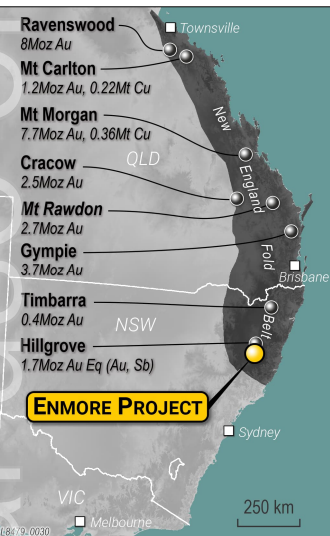
New England Fold Belt » +35Moz Au endowment (1)

Underexplored Belt » Multiple Tier 1 deposits (1)

- Ravenswood (8Moz), Mt Morgan (7.7Moz), Cracow (2.5Moz), Gympie (3.7Moz), Mt Rawdon (2.7Moz), Mt Carlton (1.2Moz)
- **Hillgrove Mine (1.7Moz Au, 0.13Mt Sb)** ASX: LRV (2)
 - Structurally controlled, spatially related to intrusions
 - Sb-Au → Au vertical zonation (e.g. Sunday Creek, Fosterville)
- Newmont (1,582km²) and FMG (567 km²) both active in region
- **Highly prospective » Au ±Sb potential**

Enmore Gold Project » 20km Sth of Hillgrove Au-Sb Mine; 302km² 2x EL's

- **Numerous high-grade gold occurrences & historical workings**
- Geological similarities & fault architecture to Hillgrove:
 - Structurally controlled, spatially related to intrusions
 - **+30km strike potential on 3 parallel shear zones/faults**
 - Is Enmore at a deeper erosional level? (Bonanza gold zone)
 - **Bulk tonnage and high-grade gold potential**
- **Limited systematic exploration » Most targets not drill tested**



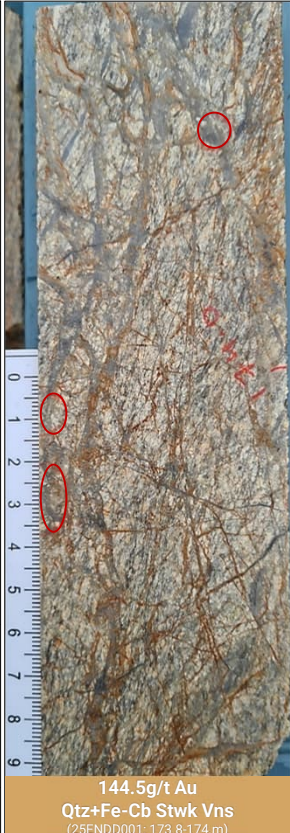
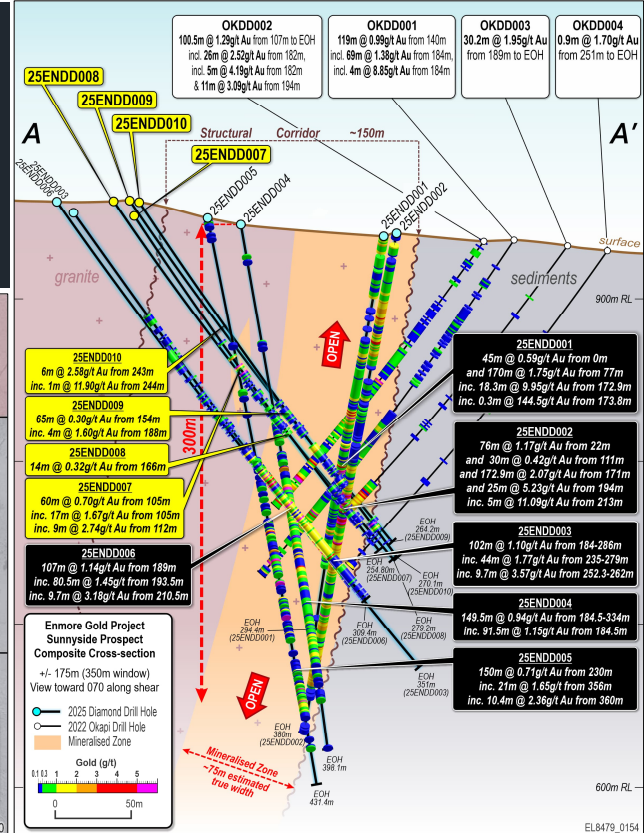
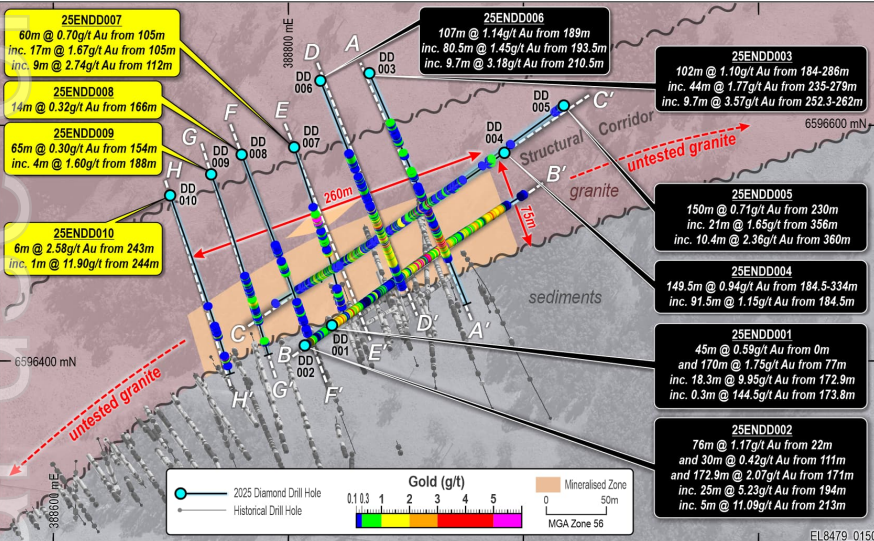
Notes: 1. Phillips, 2017; 2. ASX: LRV 22/12/2023

Sunnyside Prospect

Significant discovery story emerging » ~75m wide +300m deep +260m strike

Phase I drilling completed (3,232m) » 7 out of 10 holes with visible gold

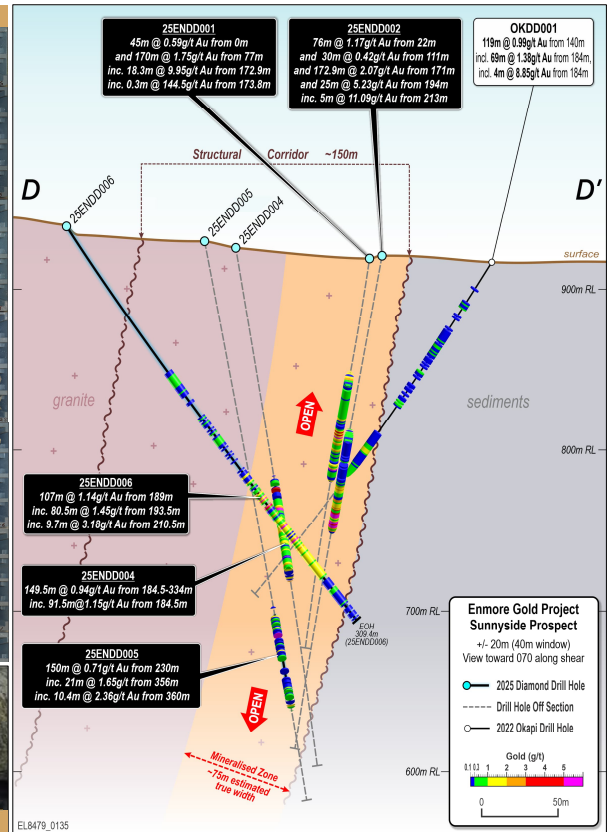
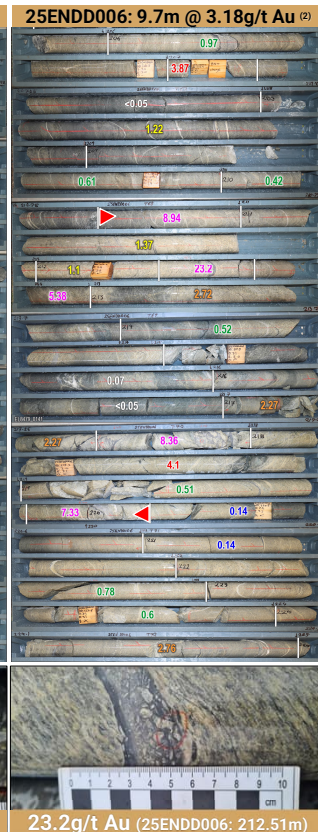
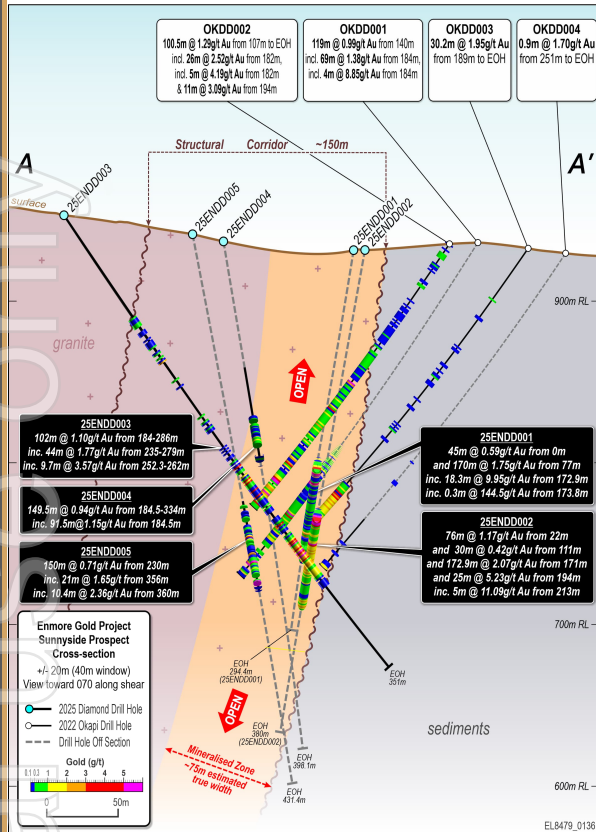
- Mineralisation from surface (no pre-strip)
- Shear zone control with gold hosted in granite (brittle host)
- Multiphase veining + sulphides (long-lived system)
- **Consistent ~75m true widths indicating bulk tonnage potential**
- **Higher grades near granite-sediment contact + flat dipping structures**
- Mineralisation OPEN at depth (note +900m vertical depth at Hillgrove)
- Mineralisation OPEN along Sunnyside Shear Zone to NE & SW



Notes: 1. Refer ASX:KNB 02/04/2025, 15/04/2025; 29/04/2025; 20/05/2025; 06/06/2025; 23/06/2025; xx/07/2025.

Enmore Project – Sunnyside Prospect

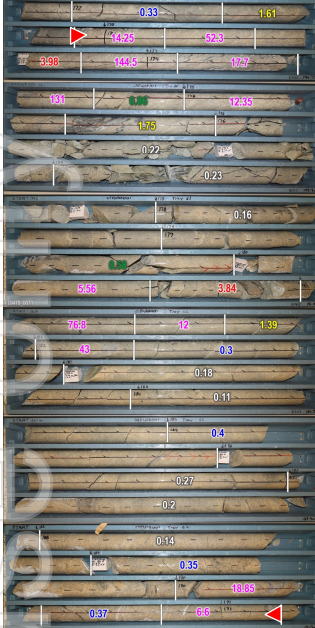
Consistent widths & grades » 80.5m @ 1.45g/t Au from 193.5m (25ENDD006) ⁽²⁾



Enmore Project – Sunnyside Prospect

Bulk tonnage + high-grade potential » 172.9m @ 2.07g/t Au from 171m (25ENDD002) ⁽¹⁾

25ENDD001: 18.3m @ 9.95g/t Au ⁽²⁾



131.5g/t Au (25ENDD001: 174.4m)

SW

surface

900m RL

**Enmore Gold Project
Sunnyside Prospect**

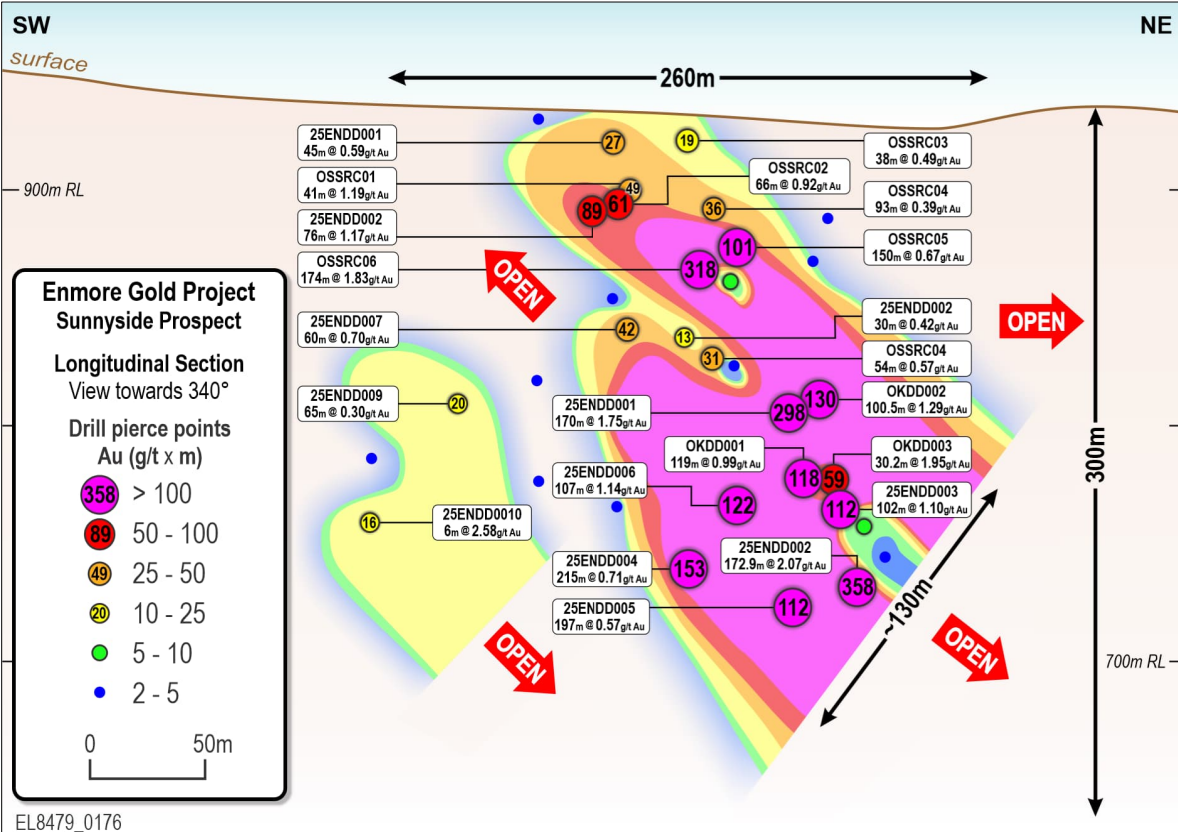
Longitudinal Section
View towards 340°

Drill pierce points
Au (g/t x m)

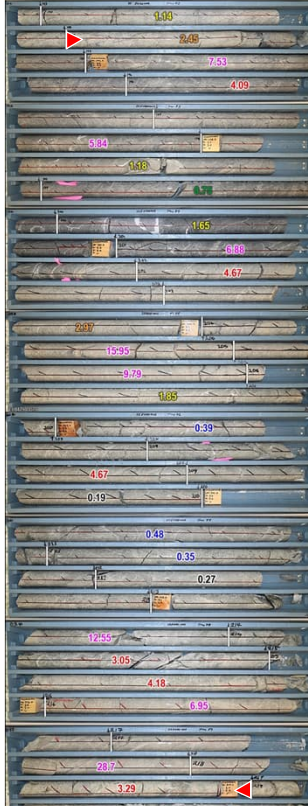
- 358 > 100
- 89 50 - 100
- 49 25 - 50
- 20 10 - 25
- 5 - 10
- 2 - 5

0 50m

EL8479_0176



25ENDD002: 25m @ 5.23g/t Au ⁽³⁾



Sunnyside Prospect – Geological Interpretation

Multi-stage, retrograde, granite-hosted, epizonal orogenic gold system

Simplified Paragenesis:

Pre-mineral »

- Emplacement of porphyritic quartz monzogranite (granite) into sedimentary package along deep-seated structures
- Early structural preparation during peak metamorphism with development of penetrative & locally mylonitic fabric (Sunnyside Shear Zone)

Syn-mineral »

- Au** Silica-sericite alteration utilising early fluid pathways
- Au** Sulphide-bearing tectonic-hydrothermal breccias & veins
- Au** Quartz-sulphide veins
- Au** Fe-carbonate alteration +veins & vein arrays
- Au** Drusy quartz veins ±sulphide +adularia +coarse free gold

Post-mineral »

- Quartz-carbonate-chlorite vns

Early (+350°C)

Ductile deformation & regional metamorphism
Biotite

Uplift & brittle deformation with retrograde, hydrothermal fluid flow
System interpreted to progress to oblique slip (north side up) and dextral

Chlorite (propylitic)

Pre-mineral breccias

Silica-sericite-illite (phyllitic)

Py-As pyrite breccias, veins & disseminations

Quartz-Fe-carbonate veins and vein arrays

Drusy quartz veins

Gold



Mylonitic Granite
(25ENDD004: 159m)



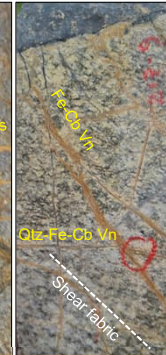
~0.1-0.3g/t Au
Early alteration
(25ENDD001: 208-212m)



2.62g/t Au
Sulphide Bxx
(25ENDD002: 276.4m)



2.35g/t Au
Fe-Cb +Sulph
(25ENDD003: 254m)



28.7g/t Au
Qtz-Fe-Cb Vns
(25ENDD002: 217m)



144.5g/t Au
Qtz+Fe-Cb Stwk
(25ENDD001: 173.8-174m)



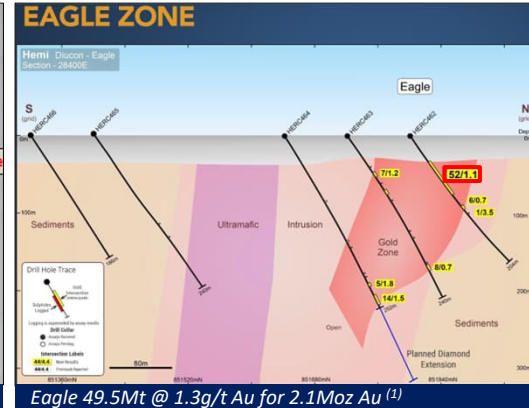
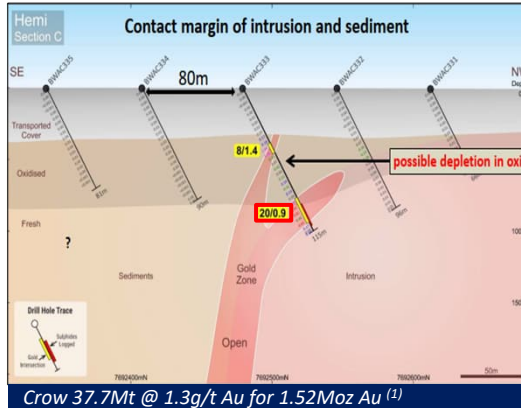
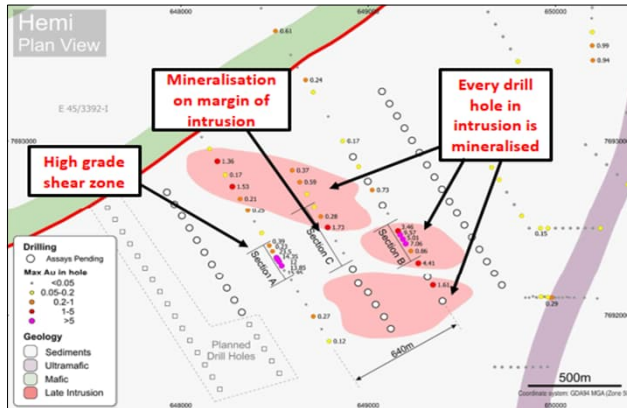
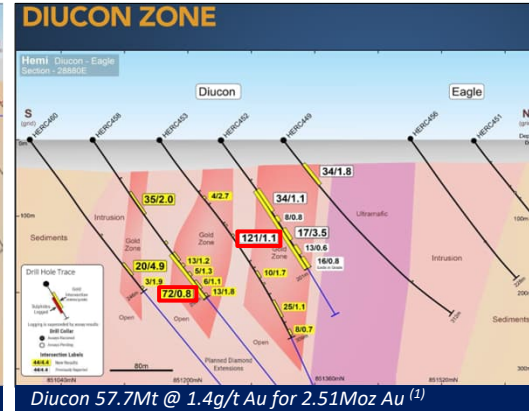
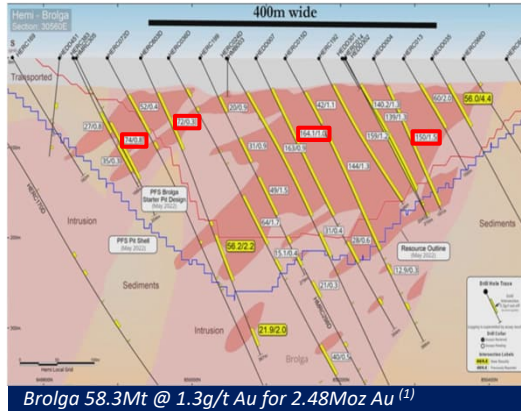
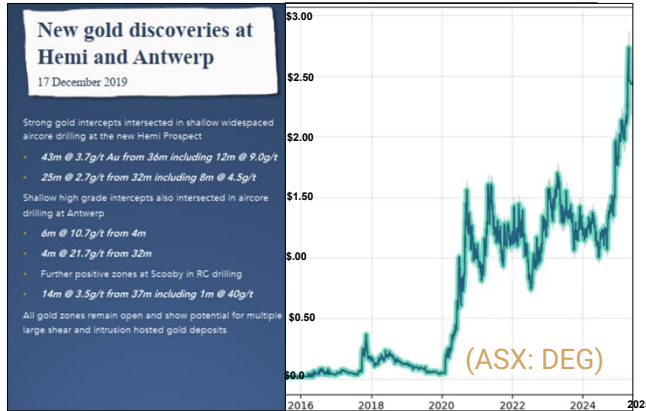
8.02g/t Au
Drusy qV
(25ENDD007: 120.91m)

Notes: 1. Cautionary note: visual estimates of mineral abundance should never be considered a proxy or substitute for laboratory analyses where concentrations or grades are the factor of principal economic interest. Visual estimates also potentially provide no information regarding impurities or deleterious physical properties relevant to valuations.

Refer to ASX announcements dated 19/02/2025; 26/02/2025; 17/03/2025; 20/05/2025 for details.

Greenfields gold discoveries

What can they look like at an early stage? » eg. Hemi (ASX: DEG) ~11Moz Au ⁽¹⁾



Notes: 1. DEG (ASX) 14/11/2024. 264Mt @ 1.3g/t Au for 11.2Moz
No assurance can be given that a similar or any mineral resource estimate will be determined at KNB's Enmore Project

DEG (ASX) 11/02/2020

DEG (ASX) 01/06/2021

Enmore Project

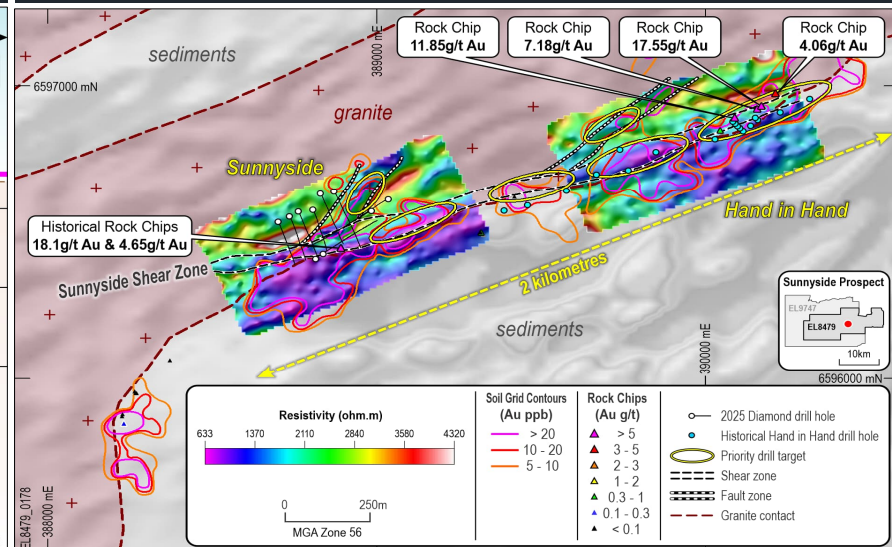
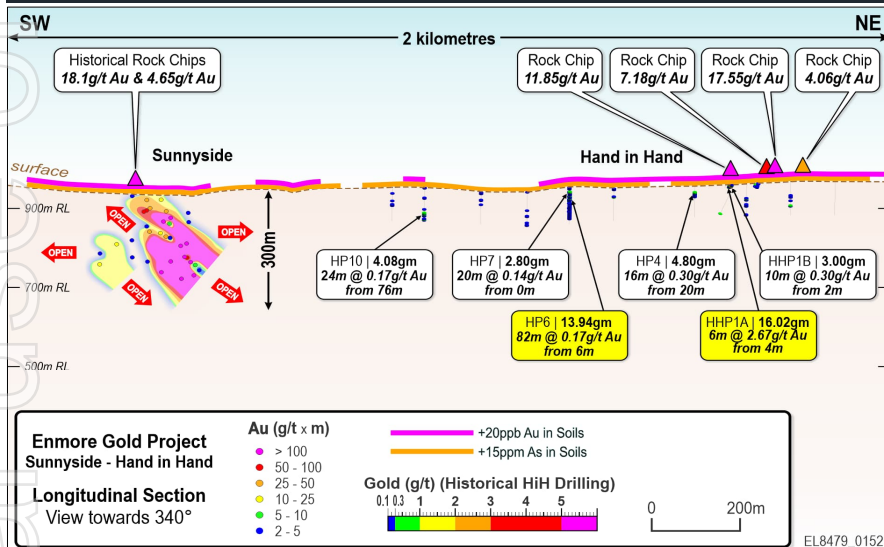
Next steps for growth + discovery » +10,000m follow-up drilling planned & fully funded

Sunnyside Prospect » Infill and extensional drilling planned

- Phase II drilling scheduled for ~end August (weather permitting)
- Determine continuity of mineralisation (confidence)**
 - Target up-dip (near surface) & down-dip (at depth) positions
- Determine size of system (scale)**
 - Target extensions to mineralised zone to SW & NE along Shear Zone
- **Targeting +1 Moz Au system**

Hand in Hand Prospect » +2km long shear zone east of Sunnyside

- Rock chips to 17.55g/t Au and 11.85g/t Au ⁽¹⁾**
- +1km long Au+As soil anomaly (open to east)
- Preferred granite host rock
- IP geophysics effective at mapping shear zone (resistivity low) ⁽²⁾**
- Limited drilling - anomalous gold
- **Potential for "Sunnyside-style" repetitions**



Notes: 1. KNB (ASX) 24/06/2025; 2. 05/08/2025

Enmore Project

Next steps for growth + discovery » +10,000m follow-up drilling planned & fully funded

District Opportunities » Discovery & growth drilling

- Multiple targets on 3 parallel shear zones (+30 km potential)

Postman's: +0.95km long Au soil anomaly (open to east, west, north)

- Rock chips to **14.05g/t Au, 11.09g/t Au** ⁽¹⁾

Sherwood: +1km long Au soil anomaly (open to east)

- Limited historical drilling: 0.61m @ **62.1g/t Au** from 60.76m (DDH1) ⁽²⁾

Borah: +1.2km long Au soil anomaly (max 11,000ppb Au)

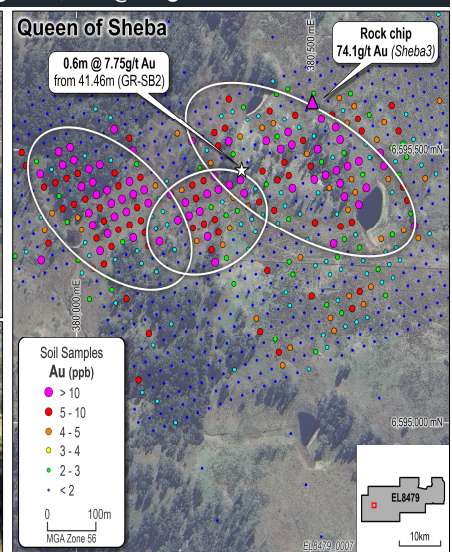
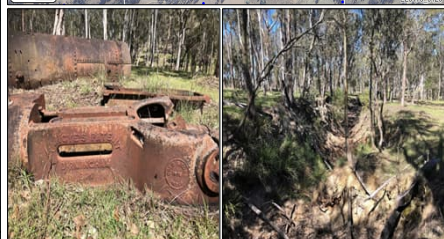
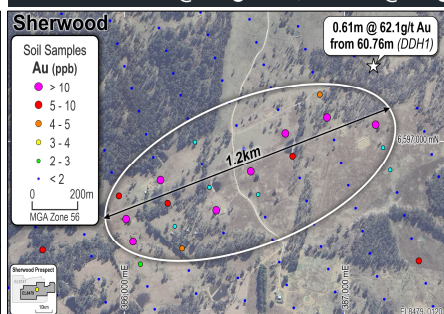
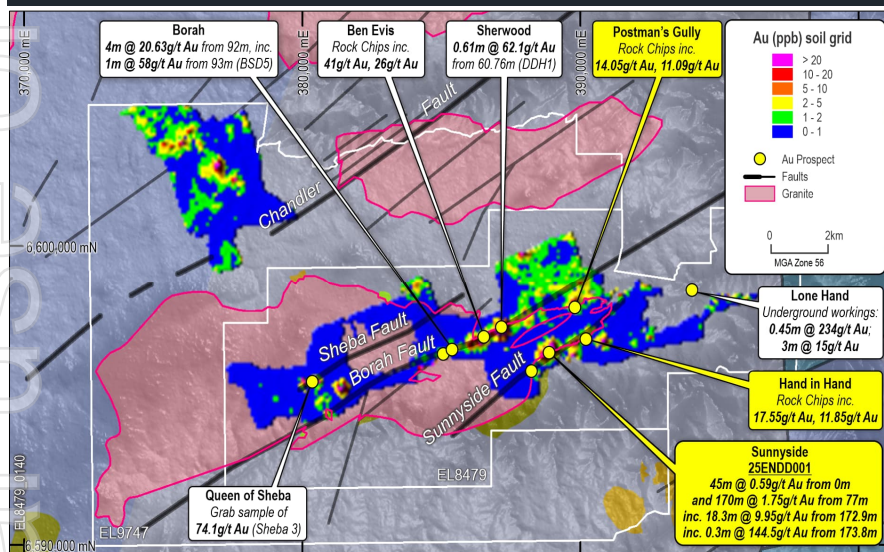
- Historical drilling: 4m @ **20.63g/t Au** from 92m (BSD5) ⁽²⁾

Queen of Sheba Prospect » High-grade gold target ⁽²⁾

- 900m x 300m Au soil anomaly (max 3,430ppb Au)
- Historic workings: **74.1g/t Au** (Sheba 3, grab sample)
- Limited drilling: 0.6m @ **7.75g/t Au** from 41.46m (GR-SB2)

Lone Hand Prospect » Bonanza gold target ⁽²⁾

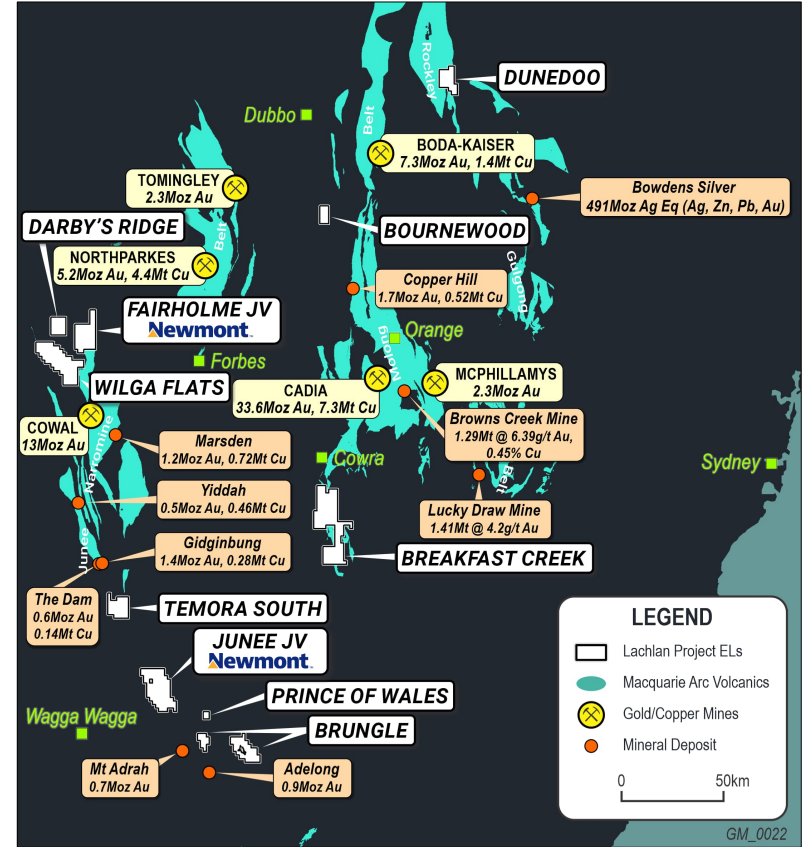
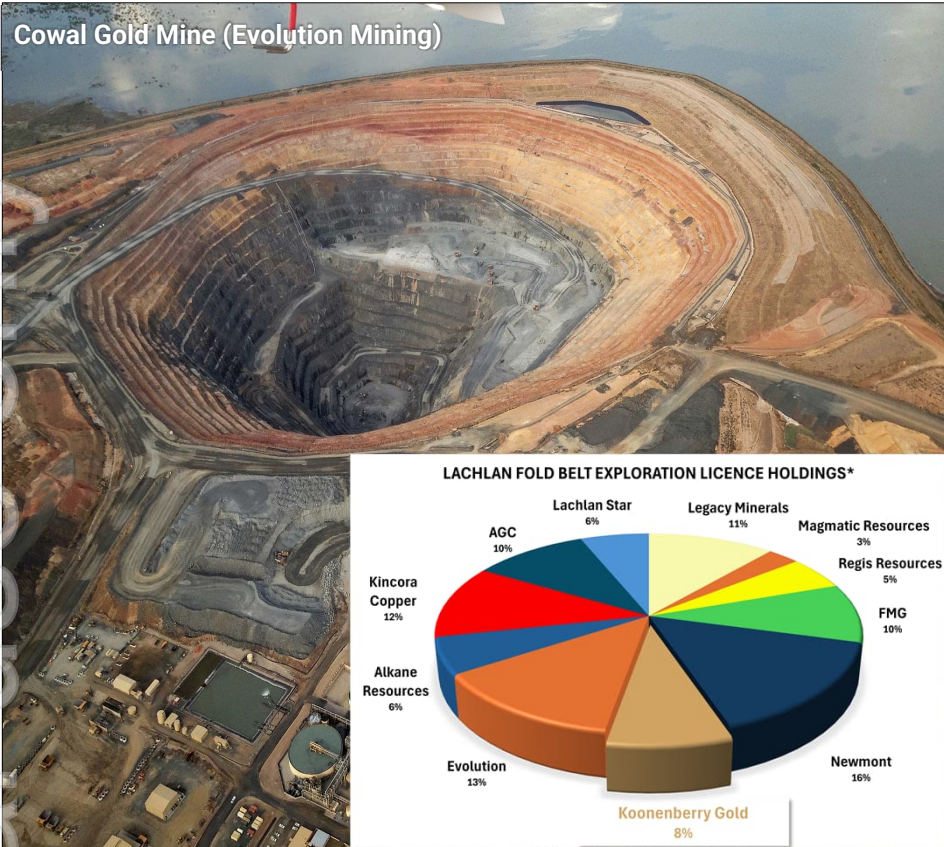
- Surface sampling: **56g/t Au** and **36g/t Au**
- Underground workings:
 - 0.45m @ **234g/t Au**; 0.91m @ **21g/t Au**; 0.76m @ **23 g/t Au**;
 - 0.45m @ **33g/t Au**; 1.52m @ **16g/t Au**; 3m @ **15g/t Au**



Notes: 1. KNB (ASX) 1. 22/0/2025; 2. 17/10/2024

Lachlan Project

Strategic holding in Junee & Molong Belts » 110Moz Au, 19Mt Cu Endowment (1)



Notes: 1. Future of Minerals in NSW Report, March 2020. NSW Dept. of P, I&E; *Selected Exploration Licence Holders, Minview (Appendix 3)

Lachlan Project

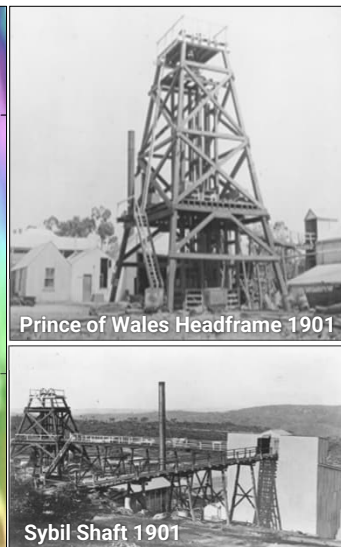
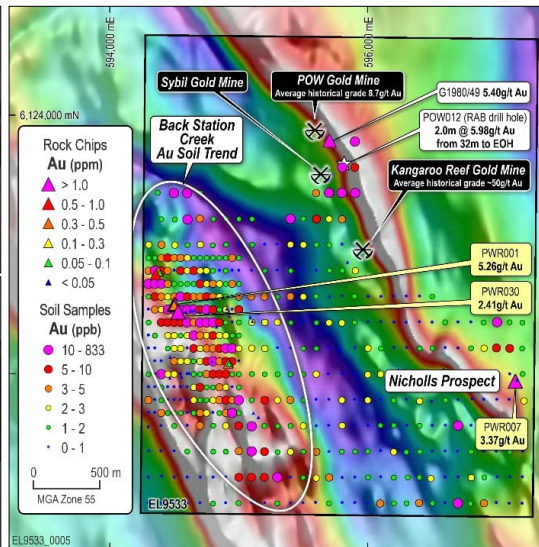
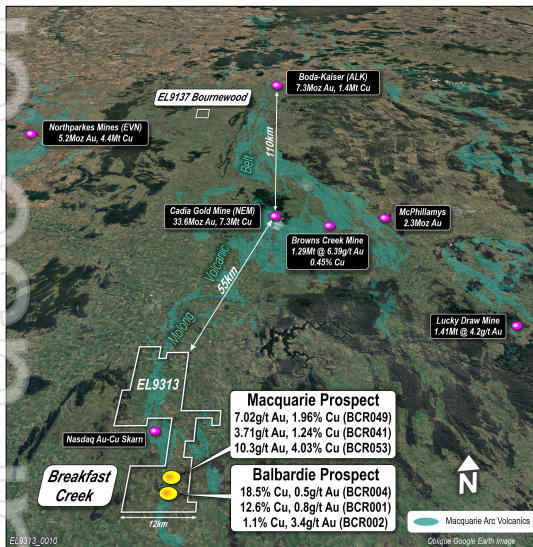
High-grade gold and copper discovery opportunities

Breakfast Creek Cu-Au Project » Rare opportunity

- 55km south of Cadia Cu-Au Mine (33.6Moz Au & 7.3Mt Cu) ⁽¹⁾
- Entire prospective belt currently held by majors and active juniors
- **Significant +6km Cu-Au + pathfinder soil anomaly**
- Widespread skarn-type hydrothermal alteration & gossans
- Potential for **high-grade Cu-Au skarn** and porphyry systems
 - e.g. Browns Creek 1.29Mt @ 6.39g/t Au, 0.45% Cu ⁽²⁾
- **Infill surface geochemistry » Advance to drill ready status**

Prince of Wales Au Project » Historic workings, largest in Gundagai

- **1.8km underground workings; 170m deep** (26.6k oz Au @ 8.7g/t Au) ⁽⁴⁾
- Two gold trends (POW and Back Station Creek) ⁽⁵⁾
- **Magnetite destructive alteration** (sericite-clay-qtz-carbonate-pyrite)
- Limited drilling: **2m @ 5.98g/t Au** from 32m to EOH (POW012) ⁽⁴⁾
- No systematic or modern exploration
- **Surface geochemistry & geophysics » Advance to drill ready status**



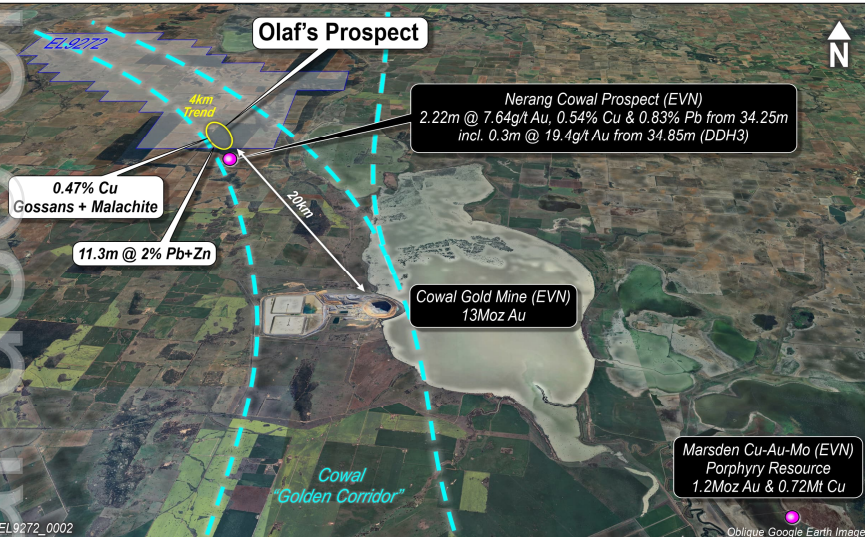
Notes: 1. Newmont, 2024; 2. Smart & Wilkins, 1997; 3. KNB (ASX) 07/01/2025; 4. KNB (ASX) 17/10/2024; 5. KNB (ASX) 08/07/2025

Lachlan Project

Wilga Project » Standout Epithermal Au Target

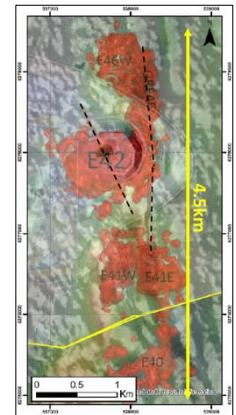
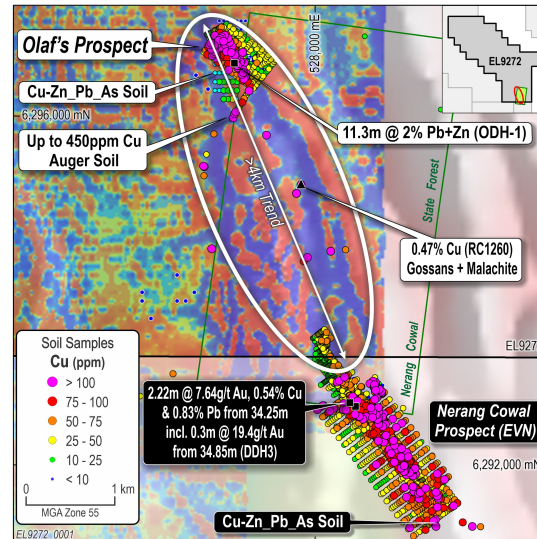
Wilga Project » 20km from +13Moz Cowal Au Mine ⁽¹⁾

- Strategically located 272km² Exploration Licence
- Coincident Magnetics and K-Radiometric signatures
- Prospective features similar to Cowal Igneous Complex
- +4km Carbonate Base Metal (CBM) trend
- No systematic exploration
- Land access secured to **previously unexplored Olaf's Prospect**



Olaf's Prospect » Mineralisation at EL boundary

- Significant drill results to south: **2.22m @ 7.64g/t Au** from 34.25m incl. **0.3m @ 19.4g/t Au** from 34.85m (DDH3) ⁽²⁾
- Cu-Zn-Pb-As soil anomaly (open); nb. Cu-Pb pathfinders at Cowal
- **Highly anomalous rocks: 0.47% Cu, 0.33% Zn** ⁽¹²⁶⁰⁾ ⁽²⁾; 1.32% Pb (788-4) ⁽³⁾
- Limited drilling confirms base metals: 11.33m @ 2% Pb+Zn (ODH-1) ⁽²⁾
- **Epithermal quartz-carbonate-adularia alteration**
- Pyrite>sphalerite>galena>chalcopyrite veins

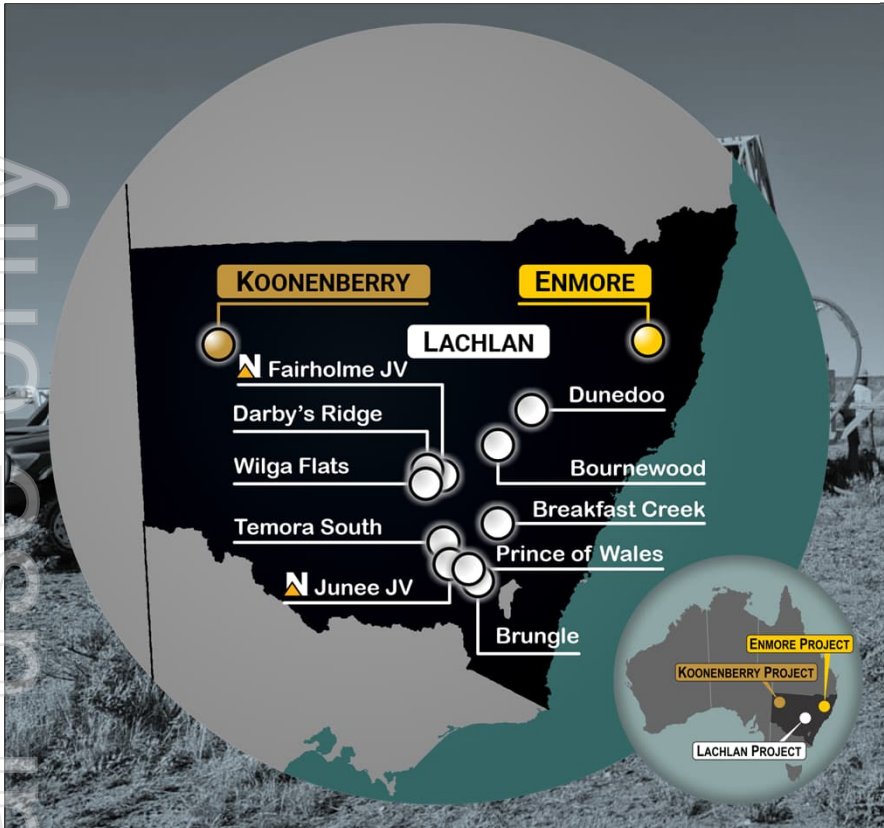


+13Moz Cowal Au Mine ⁽⁴⁾
at same scale as Olaf's

Notes: 1. Evolution Mining, 2023; 2. Foster, 1977; 3. Unknown Author, 1976; 4. Evolution Mining, 2017

Koonenberry Gold

Multiple Au & Cu discovery opportunities » **Consistent news flow for investors**



ENMORE PROJECT » Significant discovery story emerging

- **Sunnyside:** +10,000m drilling planned & fully funded (~ End August)
- **Hand in Hand:** IP geophysics mapping Shear Zone
- **Sherwood:** Geochem to refine drill targets
- **Borah:** Geochem to refine drill targets
- **Queen of Sheba:** Geochem to refine drill targets
- **Potential for bulk tonnage + high-grade gold discoveries**

LACHLAN PROJECT » Progressing multiple drill targets

- **Breakfast Creek:** Geochem & IP to refine drill targets
- **Prince of Wales:** Geochem & IP to define drill targets
- **Wilga Flats:** Geochem & IP to refine drill targets
- **June JV:** **Newmont** drilling Cu-Au porphyries
- **Fairholme JV:** **Newmont** drilling Cu-Au porphyries
- **Multiple Au & Cu-Au discovery opportunities**

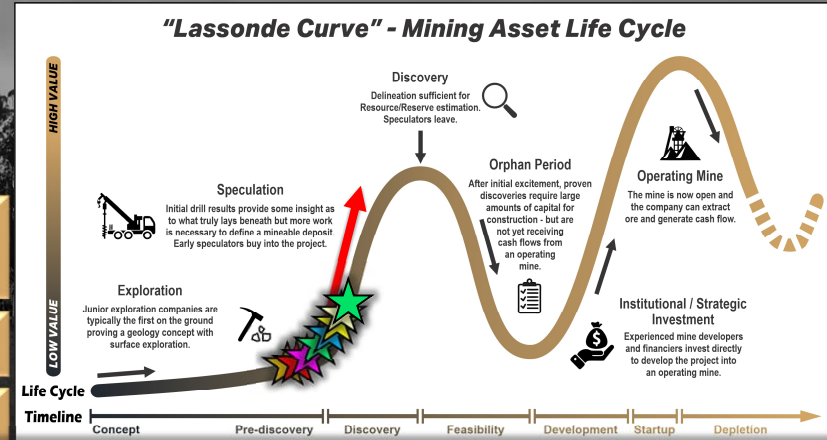
KOONENBERRY PROJECT » Underexplored Frontier Belt (2,478km²)

- **Bellagio:** Aircore to test 50m wide Central Gold Zone
- **Royal Oak Fault:** Aircore to test 3 areas on 20km structure
- **Pipeline Projects:** +34km of undrilled Au soil anomalies
- **Delamarian:** Field checking of Cu prospective stratigraphy
- **Multi-million ounce Au + Cu potential**



Significant discovery story emerging at Enmore
 Enviable project pipeline
 Consistent news flow for investors

Geology	<ul style="list-style-type: none"> » Exciting Au and Cu-Au Portfolio » Multiple discovery opportunities
Scale	<ul style="list-style-type: none"> » 4,360km² significant land package
Team	<ul style="list-style-type: none"> » Experienced in Au & Cu-Au exploration » Track record of discoveries
Support	<ul style="list-style-type: none"> » Lion Selection Group, Lowell Resources Fund
Value	<ul style="list-style-type: none"> » Leveraged to exploration success
Cash ⁽¹⁾	<ul style="list-style-type: none"> » Well funded for discovery with \$8.7M cash
Timing ⁽²⁾	<ul style="list-style-type: none"> » Exceptional drill results + new targets » +10,000m: infill + extension + discovery



★	RC06: 174m @ 1.83g/t Au from 0m inc. 3m @ 8.86g/t Au from 172m to EOH
★	DD01: 170m @ 1.75g/t Au from 77m inc. 18.3m @ 9.95g/t Au from 172.9m
★	DD02: 172.9m @ 2.07g/t Au from 171m inc. 25m @ 5.23g/t Au from 194m
★	DD03: 102m @ 1.10g/t Au from 184m inc. 9.7m @ 3.57g/t Au from 252.3m
★	DD04: 149.5m @ 0.94g/t Au from 184.5m inc. 91.5m @ 1.15g/t Au from 184.5m
★	DD05: 150.5m @ 0.71g/t Au from 230m inc. 10m @ 2.36g/t Au from 360m
★	DD06: 80.5m @ 1.45g/t Au from 193.5m inc. 9.7m @ 3.18g/t Au from 210.5m
★	DD07: 60m @ 0.70g/t Au from 105m inc. 17m @ 1.67g/t Au from 105m

Notes: 1. Cash at 30/06/2025.
 2. KNB (ASX) 17/10/2024, 02/04/2025, 14/04/2025, 29/04/2025, 20/05/2025, 06/06/2025, 23/06/2025, 04/08/2025.



For further information, please contact:

Dan Power
Managing Director

dan.power@koonenberrygold.com.au
+61 8 6245 9869

Nathan Ryan
Investor Relations

nathan.ryan@nwrcommunications.com.au
+61 420 582 887

ASX: KNB

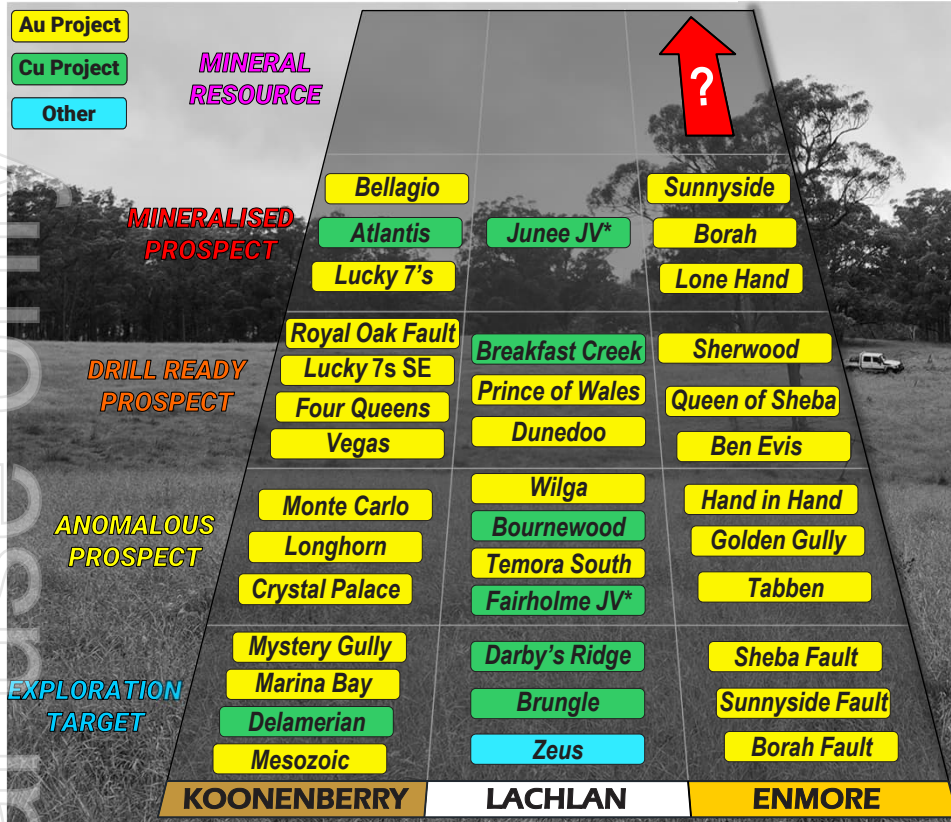


SUBSCRIBE



Koonenberry Gold

Project pipeline



Au Project
Cu Project
Other

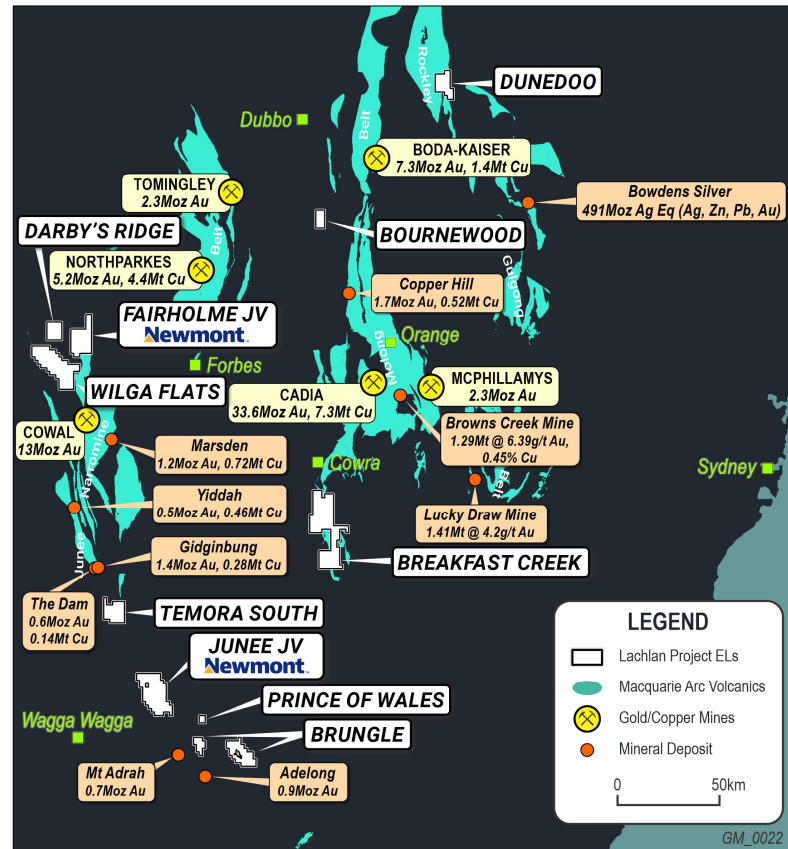
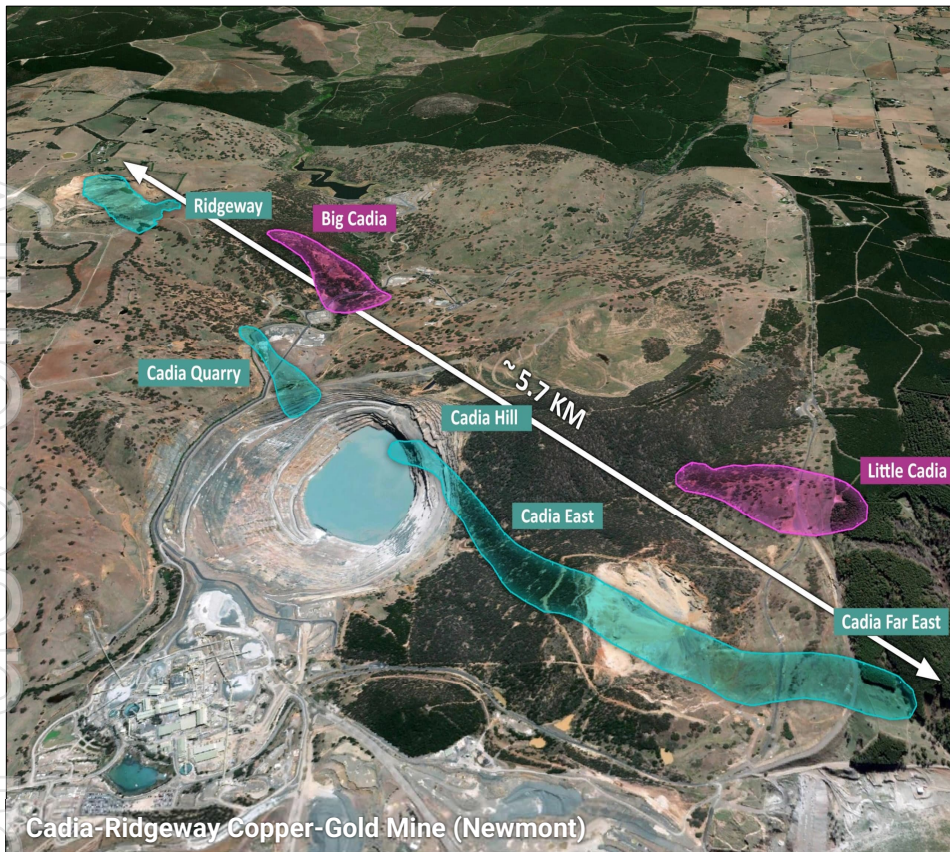
MINERAL RESOURCE



Notes: * Junee and Fairholme Projects are in Joint Venture with Newmont (Manager)

Appendix 1

Additional project information – Lachlan Project



Lachlan Projects » Multiple Gold and Copper discovery opportunities

Darby's Ridge Au-Cu Project

- Underexplored magnetic igneous complex
 - **Coincident geophysical anomalies (Mag-IP)**
 - Large +2km Au-Cu Aircore anomaly
- ➡ 7Moz Au Havieron deposit analogy

Wilga Au Project

- 20km NNW of 13Moz Cowal Au Mine
 - **Mineralisation Sth of EL Boundary:**
2.22m @ 7.64g/t Au inc. 0.3m @ 19.4g/t Au from 34.2m
 - Epithermal qtz-carbonate-adularia alteration
- ➡ Advance to drill ready status

Temora South Au Project

- 16km Sth of 1.4Moz Gidginbung Au-Cu Mine
 - **12.7g/t Au, 4.98g/t Au, 1.65g/t Au rocks**
 - Roadside RAB hole 4m @ 1.93g/t Au to EOH
- ➡ Advance to drill ready status

Brungle Cu-Au Project

- Significant scale BHP stream sediment Cu
 - **8.43g/t Au and 1.37% Cu rock chips**
 - Large ovoid shaped magnetic anomalies
- ➡ Low level exploration planned




Breakfast Creek Cu-Au Project

- 55km Sth of 35Moz Cadia Cu-Au Mine
 - **+6km Cu-Au + pathfinder soil anomaly**
 - **18.5% Cu, 0.5g/t Au; 7.02g/t Au, 1.96% Cu**
- ➡ Advance to drill ready status

Prince of Wales Au Project

- 1.8km historic workings; 170m deep @ 8.7g/t Au
 - **Shallow RAB only: 2m @ 5.98g/t Au to EOH**
 - 4km long POW-Sybil structural trend
 - +1km long Back Creek trend (open)
- ➡ Advance to drill ready status


Junee JV Cu-Au Project (KNB 20%, NEM \$23.9M)

- Unusually fertile segment of Macquarie Arc
 - **25x Targets; 4x alkalic porphyry systems**
 - 224m @ 0.19% Cu, 0.2g/t Au from 172m
- ➡ **Drilling commenced 01/25** 

Dunedoo Au Project

- 65km Nth of 491Moz Ag Eq Bowdens deposit
 - **8km long Au in soil anomaly (>10ppb Au)**
 - 1.24g/t Au, 12g/t Ag rocks
- ➡ Advance to drill ready status

Fairholme Cu-Au Project (KNB 51%, NEM earn-in)

- Underexplored igneous complex in Lachlan
 - Concealed below shallow cover (36-150m)
 - **Numerous Northparkes-style mag features**
- ➡ **Drilling commenced 03/25** 

Bournewood Cu-Au Project

- 40km SW of 7.3Moz Boda Cu-Au deposit
 - Numerous historic workings
 - **13.3g/t and 5.7% Cu rocks**
- ➡ Low level exploration planned

Lachlan Project

Junee JV Project » **Newmont**™ (KNB 20% free carried interest)

Junee JV Project » Multiple Porphyry Cu/Au & Epithermal Au Targets

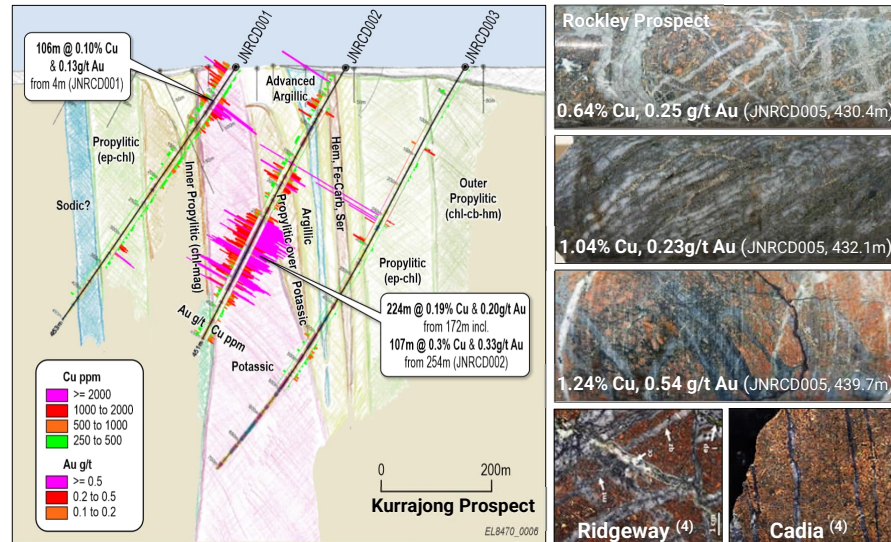
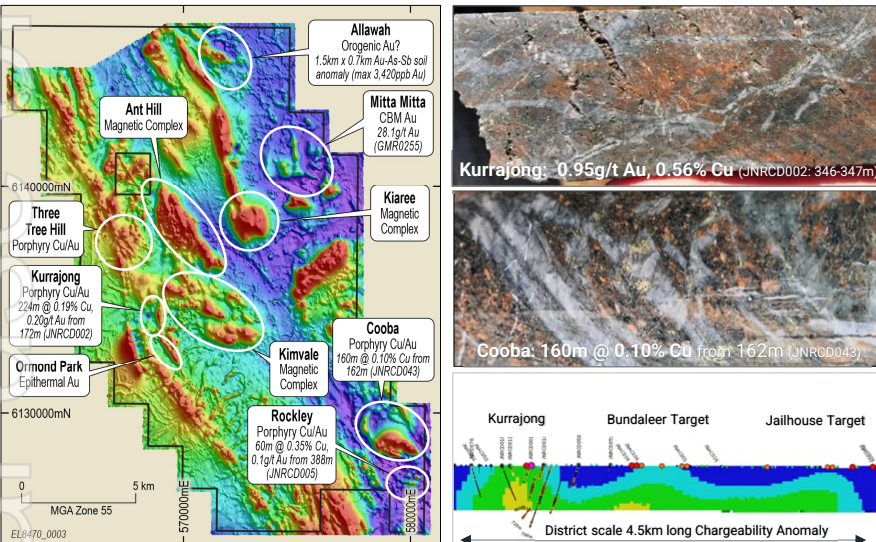
- Extensive datasets and drilling completed (+66,000m) (~\$23.9M)
- Shallow exploration for LFB, with systems exposed at/near surface
- **Multiple Targets; 4x alkalic porphyry systems identified**
- Causative monzodiorite to monzonite porphyry intrusions
- "Unusually fertile segment of Macquarie Arc – Alan Wilson" ⁽¹⁾
- **Ridgeway-type porphyry alteration and veining** ⁽²⁾

Kurrajong Prospect » Cu-Au porphyry system from surface

- 17 drillholes (8,982m) included: ⁽³⁾
 - **224m @ 0.19% Cu, 0.20g/t Au from 172m, inc. 107m @ 0.3% Cu, 0.33g/t Au from 254m (JNRC002)**

Rockley Prospect » Cu-Au porphyry system (440Ma intrusive suite)

- 8 drillholes (4,506m) included: ⁽³⁾
 - **60m @ 0.35% Cu, 0.1g/t Au from 388m (JNRC005)**
- **Newmont funded drilling programs** ⁽²⁾



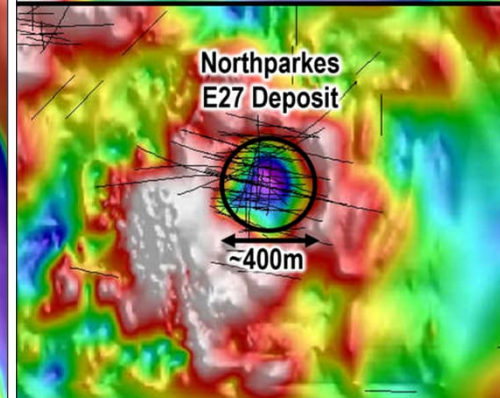
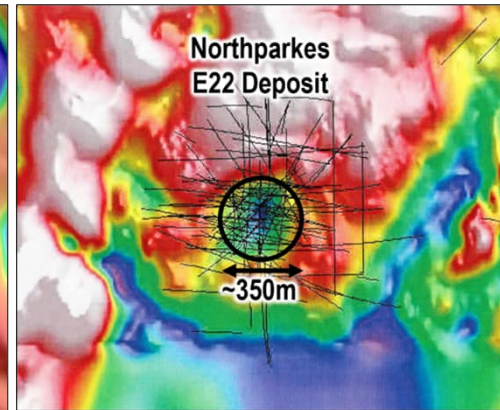
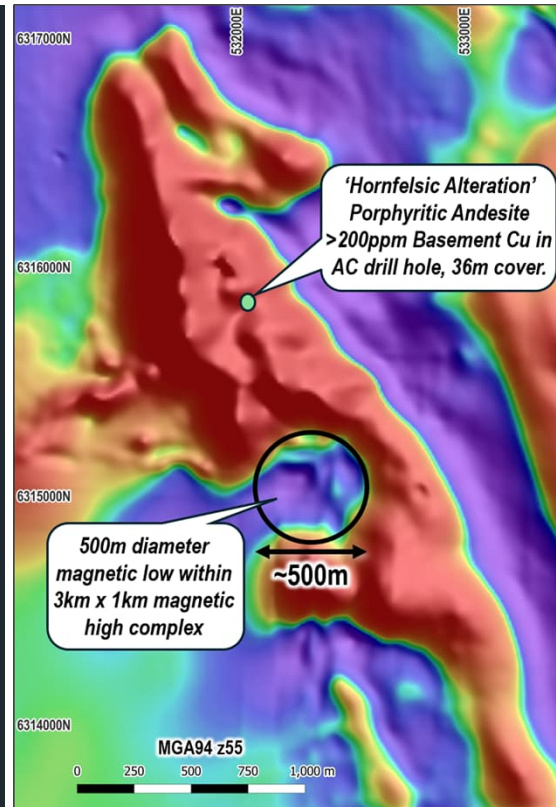
Notes: 1. Alan Wilson, 2022; 2. KNB (ASX) 16/01/2025; 3. KNB (ASX) 17/10/2024; 4. Ridgeway and Cadia Hill Photos from Harris et al.

Lachlan Project

Fairholme JV Project » **Newmont**™ JV (KNB 51% interest)

Newmont Joint Venture » Porphyry Cu-Au Targets

- Newmont may earn up to 80% by spending AUD\$5M (at their discretion)
- Immediately north of Kincora Copper Porphyry Cu-Au Gateway Prospect (123m @ 0.62g/t Au & 0.12% Cu) ⁽¹⁾
- Fairholme Igneous complex
- **Most underexplored igneous complex in Cowal region**
- Prospective Ordovician stratigraphy including Phase 4 high-level shoshonitic intrusives ⁽²⁾ (known to host Cadia & Northparkes Mines)
- **Concealed below moderate cover (36m – 150m)**
- Arc parallel and cross-arc structures interpreted
- **Numerous Northparkes-style magnetic features (“doughnuts”)** – Example at Figure right ⁽³⁾
- Anomalous Cu-Au in Aircore (>0.1g/t Au & >500ppm Cu)
- Inner propylitic alteration assemblages (chl-mt-ep)
- **Northparkes-style Targets**



Notes: 1. Kincora Copper (ASX:KCC) Website; 2. Crawford, Cooke and Fanning, 2007. 3. Lye A., et al., 2006.

Lachlan Project

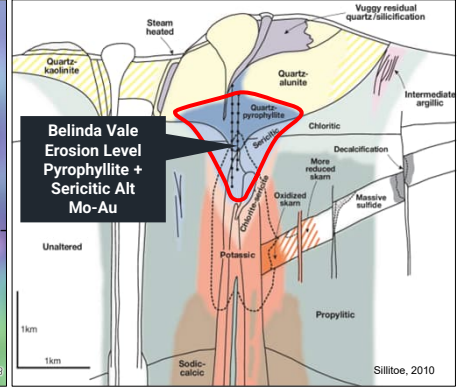
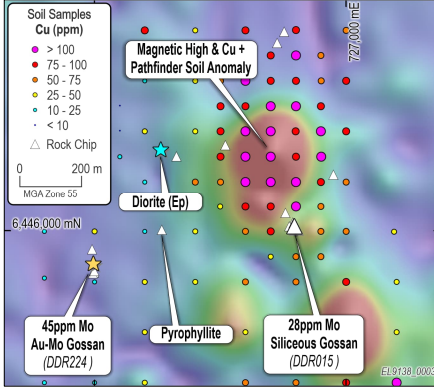
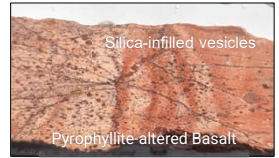
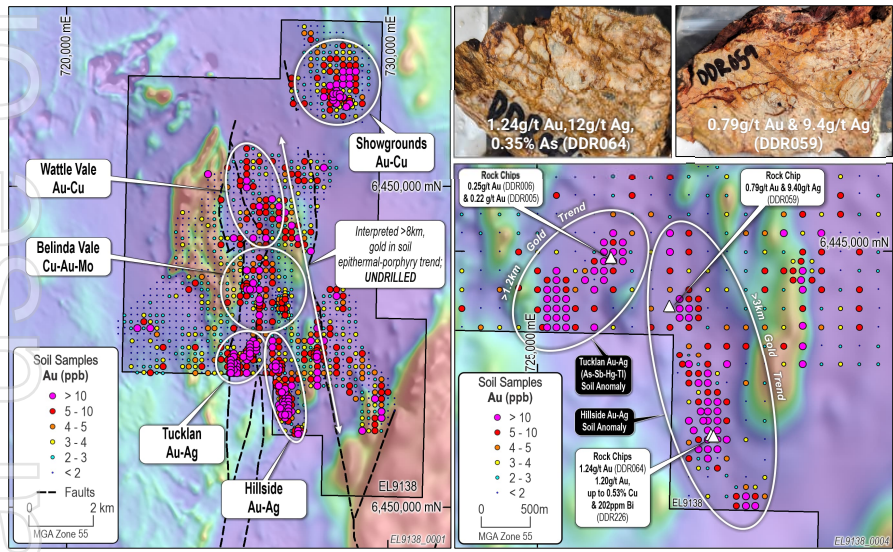
Dunedoo Project » Not a single drillhole on +8km Au trend

Dunedoo Project » Multiple untested Au-Ag-Cu Targets

- 65km from 491Moz Ag Eq Bowden's Silver Mine ⁽¹⁾
- Interpreted prospective Macquarie Arc geology
- Extensive alluvial gold (Tucklan alluvials); source not identified
- **+8km gold soil anomaly** (>10ppb Au; max 182.5ppb Au) ⁽²⁾
- **Magnetite destructive acid alteration along structural trend**
- 5 targets (Tucklan, Hillside, Wattle Vale, Showgrounds & Belinda Vale)
- **Prospects remain untested by drilling**

Belinda Vale Prospect » Porphyry Cu-Au Target

- **450 x 300m high amplitude "bullseye" magnetic anomaly**
- Coincident Cu-Mo + pathfinder element soil anomaly
- Previously misidentified high level alteration minerals
- Propylitic altered (ep-chl-cb-alb-ser) andesitic volcanoclastics + hornblende-phyric diorite (fertile). Pyrophyllite altered basalt to west
- **Features consistent with upper parts of Cu-Au-Mo porphyry system**



Notes: 2. 1.Silvermines, 2024; KNB (ASX) 17/10/2024

Appendix 2

Additional project information – Koonenberry Project



Atlantis Prospect, View to SW

Koonenberry Project

Highly Prospective Geological Setting

Belt Scale Discovery Opportunity - 100% owned

- District Scale land package (2,478km²) - early mover advantage
- 160km NE of Broken Hill, 300km by road - remote, but easy access

Extension of Western Victorian Goldfields

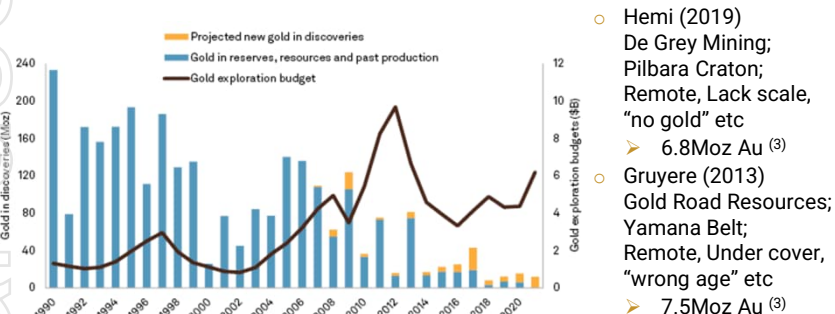
- +5Moz orogenic gold potential (eg Stawell Gold Mine)
- Similar timing of deformation, metamorphism and mineralisation ⁽¹⁾

Low Exploration Maturity

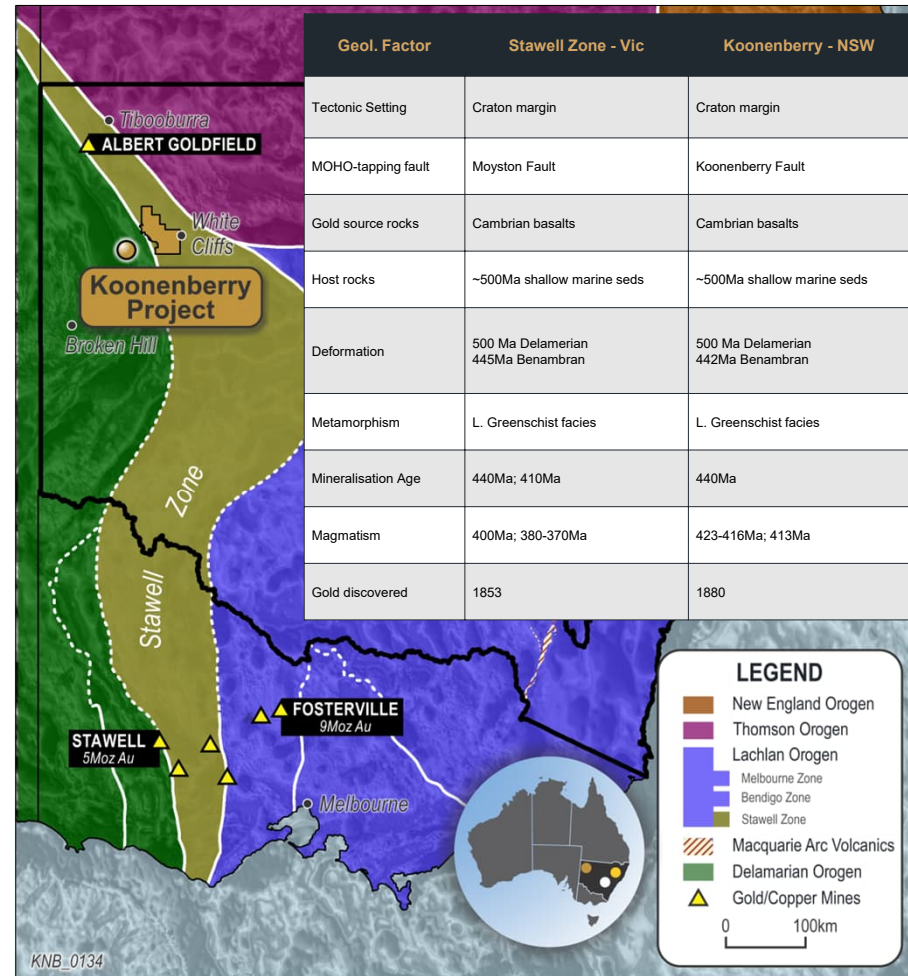
- **Historically underexplored frontier**
 - Exploration expenditure FY21: Vic 149.3M1 ⁽²⁾; KNB Belt <5M (est.)
 - Exploration drill metres FY21: Vic 100's km (est.); KNB Belt <5km (est.)

Discovery Context

- "Lack of new major discoveries over the past decade results from companies focusing on advanced-stage assets and known deposits rather than searching for new greenfield discoveries" ⁽³⁾
- **Majority of significant new discoveries come from testing new ideas:**



Data as of April 12, 2022
Source: S&P Global Market Intelligence

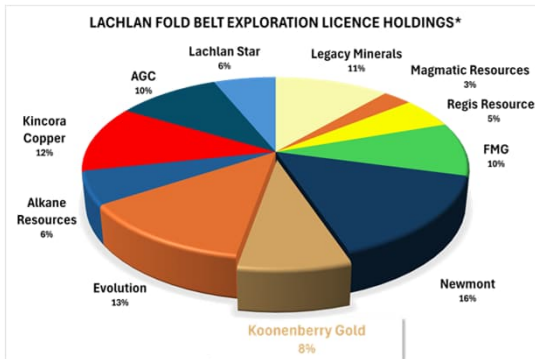


Notes: 1. Direen, N.G., 2021. 2. Earth Resources Regulation Annual Statistical Report, FY2020-21, p4 – Gold only; 3. S&P Global Market Intelligence, 12/04/2022

Appendix 3

Data used for ground holding comparison

Company	Km2	Tenement (Units)
Legacy Minerals	2239	814
Magmatic Resources	571	200
Regis Resources	1070	366
FMG	1892	647
Newmont	3073	1051
Koonberry Gold	1580	758
Evolution	2559	875
Alkane Resources	1170	400
Kincora Copper	2347	799
AGC	2033	719
Lachlan Star	1217	




Koonenberry Gold

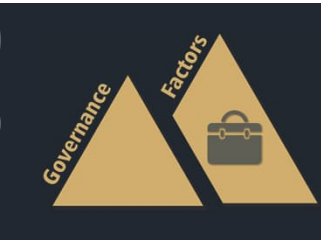
ESG



- Focusing on minimising environmental impact
- Caring for the environment and fragile ecology
- Managing biosecurity and weed prevention
- Managing environmental compliance



- Focusing on stakeholder engagement and building trust
- Implementing effective health and safety measures
- Supporting local communities
- Utilising local suppliers, logistics and hire where possible



- Focusing on responsible and ethical business practices
- Maintaining a diverse mix of skills and experience
- Managing reporting obligations
- Adhering to rigorous ASX disclosure



References

- 24/09/2021. Peters, J. Koonenberry Gold Pty Ltd Independent Geologist's Report - Koonenberry Gold Project 10 May 2021 contained in Koonenberry Gold Ltd Prospectus.
- 14/12/2021 (ASX:KNB). Koonenberry Gold, Project update.
- 15/08/2022 (ASX:KNB). Drilling commences at Lucky Sevens high grade gold Prospect.
- 10/10/2022 (ASX:KNB). Completes drilling at Lucky Sevens high grade gold Prospect.
- 28/11/2022 (ASX:KNB). Koonenberry Gold, Lucky Sevens High Grade Gold Prospect Update.
- 21/12/2022 (ASX:KNB). Koonenberry Gold, Maiden RC Drilling Results for Lucky Sevens Gold Prospect.
- 24/02/2022 (ASX:KNB). Koonenberry Gold, Commencement of 2023 Field Work following database review.
- 01/03/2023 (ASX:KNB). Koonenberry Gold, EM Geophysical Survey Underway at Atlantis Au-Cu Prospect.
- 21/03/2023 (ASX:KNB). Koonenberry Gold, EM Conductor detected at Atlantis Au-Cu Prospect.
- 03/04/2023 (ASX:KNB). Koonenberry Gold, Exciting 22.5g/t Gold in quartz vein outcrop at Bellagio.
- 31/05/2023 (ASX:KNB). Bellagio Prospect and Regional Project Update.
- 04/08/2023 (ASX:KNB). Koonenberry Gold. Approval to commence maiden drilling program at Bellagio.
- 06/09/2023 (ASX:KNB). Koonenberry Gold. Drilling program update for Bellagio Gold Prospect.
- 03/10/2023 (ASX:KNB). Bellagio Gold Prospect Encouraging Initial Drill Results.
- 07/09/2023 (ASX:KNB). Addendum to Bellagio Update Announcement.
- 30/10/2023 (ASX:KNB). Widespread gold mineralisation identified from first pass drilling at Bellagio.
- 20/11/2023 (ASX:KNB). High impact follow up drilling to commence at Bellagio.
- 12/12/2023 (ASX:KNB). Bellagio drilling intersects visible gold and widespread alteration.
- 16/01/2024 (ASX:KNB). Approval to commence maiden drilling program at Atlantis.
- 05/02/2024 (ASX:KNB). Bellagio drilling defines widespread gold mineralisation.
- 10/04/2024 (ASX:KNB). Commencement of drilling at Atlantis Cu-Au Project.
- 19/04/2024 (ASX:KNB). Project update.
- 28/05/2024 (ASX:KNB). Copper mineralisation intersected at Atlantis.
- 13/06/2024 (ASX:KNB). Bellagio gold footprint extended and new targets defined.
- 19/06/2024 (ASX:KNB). Drilling to test priority Cu-Au targets at Atlantis.
- 30/07/2024 (ASX:KNB). Downhole geophysics commenced at Atlantis.
- 17/10/2024 (ASX:KNB). Transformational acquisition of exciting NSW Au and Cu/Au portfolio.
- 07/01/2025 (ASX:KNB). Initial fieldwork at Breakfast Creek confirms high-grade gold-copper along 6km trend.
- 16/01/2025 (ASX:KNB). Newmont commences drilling at Junee Cu-Au Project.
- 20/01/2025 (ASX:KNB). KNB identifies 4km gold trend at Prince of Wales Project.
- 11/02/2025 (ASX:KNB). KNB commences drilling at Enmore Gold Project.
- 19/02/2025 (ASX:KNB). Multiple zones of visible gold intersected at Enmore Gold Project.
- 25/02/2025 (ASX:KNB). KNB expands Enmore Gold Project NSW securing gold-antimony targets.
- 26/02/2025 (ASX:KNB). Visible gold in second drill hole at Enmore Gold Project.
- 10/03/2025 (ASX:KNB). Newmont commences drilling at Fairholme Cu-Au JV Project.
- 17/03/2025 (ASX:KNB). More visible gold zones identified at Enmore Gold Project.
- 02/04/2025 (ASX:KNB). KNB returns 170m @ 1.75g/t gold incl. 18.3m at 9.95g/t gold from first drillhole at Enmore Gold Project, NSW.
- 14/04/2025 (ASX:KNB). KNB returns 172.9m @ 2.07g/t gold incl. 25m at 5.23g/t gold from second drillhole at Enmore Project, NSW.
- 23/04/2025 (ASX:KNB). KNB intersects visible gold in fifth drill hole at Enmore Project.
- 29/04/2025 (ASX:KNB). KNB returns 102m at 1.10gt gold including 9.7m at 3.57gt from third drillhole.
- 30/04/2025 (ASX:KNB). KNB intersects multiple zones of visible gold in sixth drill hole at Enmore Project.
- 13/05/2025 (ASX:KNB). KNB expands Sunnyside gold system to more than 230m strike.
- 20/05/2025 (ASX:KNB). KNB returns 149.5m at 0.94g/t Au from fourth drillhole at Enmore Project.
- 06/06/2025 (ASX:KNB). KNB returns 150m at 0.71g/t Au including 21m at 1.65g/t Au from fifth drill hole.
- 23/06/2025 (ASX:KNB). KNB returns 80.5m at 1.45gt gold including 9.7m at 3.18gt gold from sixth drillhole.
- 24/06/2025 (ASX:KNB). KNB extends Sunnyside Prospect by 1.6km to over 2km strike potential.
- 27/06/2025 (ASX:KNB). Newmont completes fully-funded drilling at Junee and Fairholme JV Projects.
- 08/07/2025 (ASX:KNB). KNB identifies gold and copper targets at Prince of Wales Project.
- 21/07/2025 (ASX:KNB). Quarterly Activities Report for the period ending 30 June 2025.
- 22/07/2025 (ASX:KNB). KNB identifies target on parallel shear zone to Sunnyside at Enmore Project.
- 04/08/2025 (ASX:KNB). KNB extends mineralised zone to over 260m strike and highlights depth and strike potential.
- 05/08/2025 (ASX:KNB). KNB identifies priority drill targets along Sunnyside Shear Zone in IP Geophysics.

References

- Alkane (ASX:ALK), 2023. Boda Resource Update Increases Gold and Copper Grades, 14 December 2023.
- Catalyst Minerals (ASX: CYL), 17/05/2022. Gold grades of up to 831g/t at Lawry Prospect, Tandarra.
- China Molybdenum Company Limited, 2022 Annual Report, <http://www.cmocinternational.com>
- DeGrey Mining Ltd (ASX:DEG), 11/02/2020. Corporate Presentation – Hemi Discovery, Mallina Gold Province.
- DeGrey Mining Ltd (ASX:DEG), 01/06/2021. Investor Presentation – Mallina Gold Project Site Visit.
- DeGrey Mining Ltd (ASX:DEG), 14/11/2024. Hemi Gold Project Mineral Resource Estimate (MRE) 2024.
- Evolution Mining (ASX:EVN), 2023. Mining Annual Mineral Resources and Ore Reserves Statement.
- Evolution Mining (ASX:EVN), 07/092017. Cowal Gold Mine, District Geology Overview.
- Larvotto Resources (ASX:LRV), 2023. Hillgrove Acquisition Amended Release 1.4Moz @ 6.1g/t AuEq Gold-Antimony Hillgrove Project Acquired (22/12/2023).
- Manhattan Corporation (ASX: MHC), 06/12/2021. Drilling intersects 8m at 40.5g/t Au.
- Manhattan Corporation (ASX: MHC), 23/03/2022. Outstanding wide zones of shallow gold.
- Newmont 2025 (ASX:NEM). Mining Annual Mineral Resources and Ore Reserves Statement, <https://operations.newmont.com/reserves-and-resources>.
- North Stawell Minerals (ASX: NSM), 2021.01.31. December 2021 Quarterly Activities Report, p14.
- North Stawell Minerals (ASX: NSM), 21/06/2023. Technical Update June 2023 – OREAS Vic Round Up Conference.
- Regis Resources (ASX:RRL), 2023. Annual Mineral Resource and Ore Reserve Statement 8 June 2023.
- Silver Mines (ASX:SVL), 2024. Investor Marketing, Precious Metals Summit, Beaver Creek (10/09/2024).
- Alan Wilson, 2022. GeoAqua Consultants Ltd, Internal Report for Gilmore Metals.
- Buchhorn, D.A. 1972. Exploration report EL 303, Obley - Yeoval area. R00025116 (GS1971/052), p30.
- Cayley, R. A., et al., 2011. Crustal architecture of central Victoria: results from the 2006 deep crustal reflection seismic survey.
- Crawford, Cooke and Fanning, 2007. Geochemistry and age of magmatic rocks in the unexposed Narromine, Cowal and Fairholme Igneous Complexes in the Ordovician Macquarie Arc, New South Wales.
- Direen, N. G., 2021. Koonenberry seismic reinterpretation of reprocessed data. Internal report for Koonenberry Gold Ltd.
- Foster, J. T., 1977. Exploration report ELs 761 and 819, Wamboyno, R00011956.
- Gilligan, L. B., 1980. An inspection of the Prince of Wales Gold Mine, Gundagai. R00011444 (GS1980/010).
- Glen, Quinn, Cooke., 2012. The Macquarie Arc, Lachlan Orogen, New South Wales: its evolution, tectonic setting and mineral deposits, Episodes Vol. 35, No 1.
- Greenfield J. and Reid, W., 2006. Orogenic gold in the Tibooburra area of northwestern NSW a ~440 Ma ore system with comparison to the Victorian Goldfields.
- Harris, Cooke, Cuison, Groome, Wilson, Fox, Holliday, Tosdal., 2020. Geologic Evolution of Late Ordovician to Early Silurian Alkaline Porphyry Au-Cu Deposits at Cadia, New South Wales, Australia, SEG Special Publication 23.
- Holliday and Cooke, 2007. Advances in Geological Models and Exploration Methods for Copper + Gold Porphyry Deposits "Proceedings of Exploration 07: Fifth Decennial International Conference on Mineral Exploration."
- Lye A., Crook G., Kolff van Oosterwijk L., 2006. The Discovery History of the Northparkes Deposits. Mines & Wines 2006 – Mineral Exploration in New South Wales – SMEDG & DPI Geological Survey.
- Lewington, G., 1983. EL 1697 – Enmore, NSW, Six-Monthly report for the period ending 17 February 1983. Getty Oil Development Company Ltd. R00015006.
- McDonald, 2006. Third Annual Exploration Report R00002515 p290. Co-ords from Minview Gold Occurrence.
- Miller, J., et al., 2005. Evolution of a reworked orogenic zone: The boundary between the Delamarian and Lachlan fold belts, southeastern Australia.
- Phillips, D., et al., 2012. Timing of gold mineralisation in the western Lachlan Orogen, SE Australia: A critical overview.
- Phillips, G. N. (Ed), 2017. Australian Ore Deposits (The Australasian Institute of Mining and Metallurgy: Melbourne).
- Smart, G and Wilkins, C., 1997. The Geology of the Browns Creek Gold-Copper Skarn Deposit, Blaney, NSW
- Victorian State Government, 2021. Earth Resources Regulation Annual Statistical Report FY2020-21.
- Willman, et al., 2010. Crustal-Scale Fluid Pathways and Source Rocks in the Victorian Gold Province, Australia: Insights from Deep Seismic Reflection Profiles (Society of Economic Geologists, Inc. Economic Geology, v. 105, pp. 895–915).
- Unknown Author, 1976. First report ELs 761 and 819 Wamboyno, R00013497. Coordinates from Minview Geochemistry.