

**ASX RELEASE**

**6 August 2025**

**ASX Code: GIB**



**GIBB RIVER**  
DIAMONDS

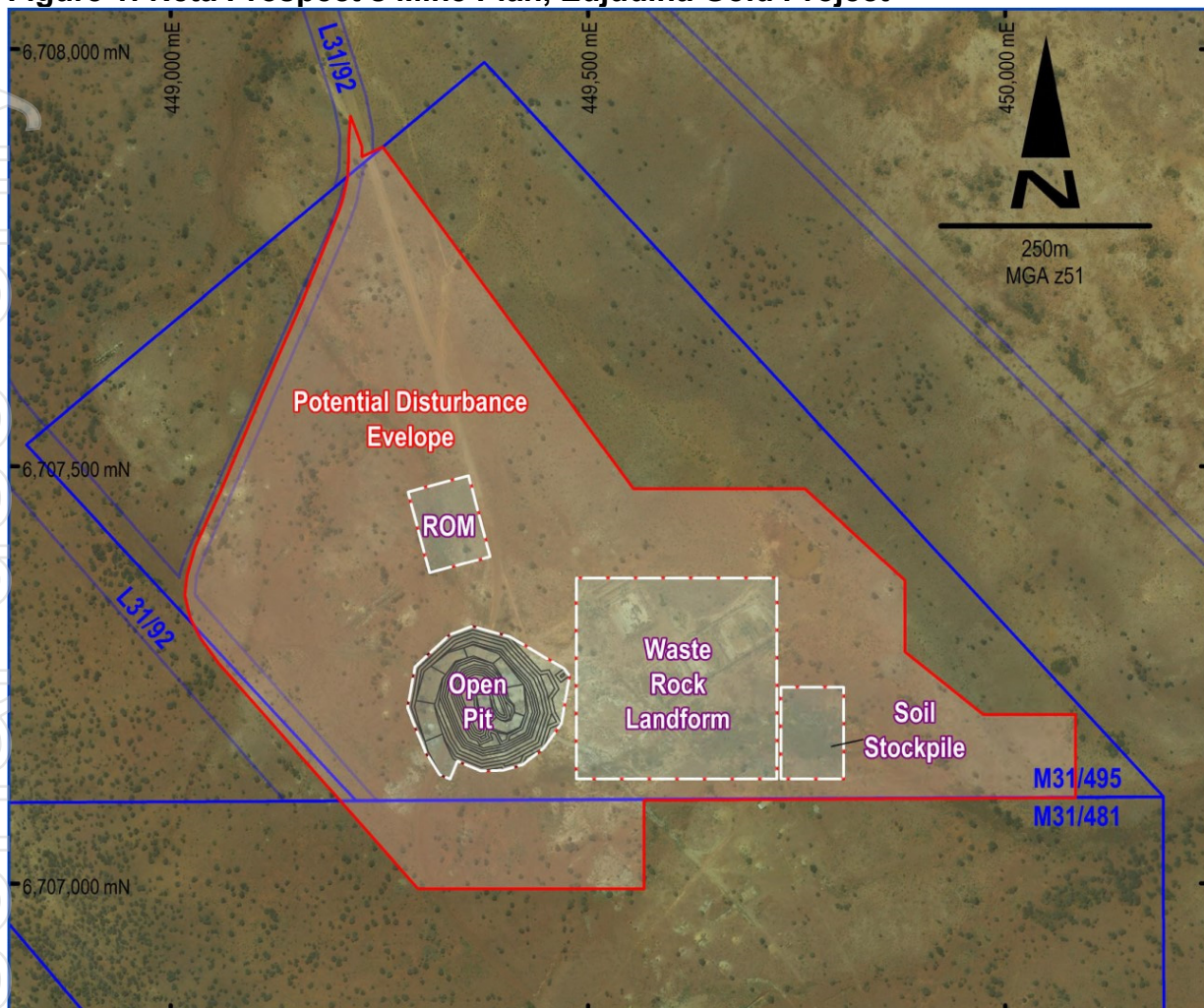
## **Mining Proposal Permit Granted & Mobilisation of Equipment Update Edjudina Gold Project, WA**

---

- The Mining Proposal (Part 1) Permit ('MPP') for the Neta Gold Prospect at the Edjudina Project has been granted by the WA Mines Department (DMPE)
- This MPP allows for the commencement of mining at the Neta Prospect
- Gibb River Diamonds Limited (ASX: 'GIB' or the 'Company') JV partner and private mining contractor BML Ventures Pty Ltd ('BML') have indicated to GIB that they expect to mobilise plant and equipment during August 2025 to facilitate ground preparation and logistics requirements prior to the commencement of mining at the Neta Prospect
- The most likely and preferred ore processing arrangement for the Neta ore is to utilise capacity within pre-existing BML milling contracts. The Company will update the market regarding ore processing arrangements when these are finalised.
- As previously reported, mining development at Neta will be conducted by private mining contractor BML, who are responsible for all mining related capital and working capital costs (at no risk to GIB). BML's role is to cover all aspects of mining and deliver the mineralised material to one of a number of nearby gold processing plants. GIB is not providing any capital or operating expenses for this mining project<sup>6</sup> and as such carries minimal financial exposure to the project
- BML has an excellent track record of working with local toll treatment operators to maximise profitability and cash generation from small to medium sized mining projects. These include agreements for conducting mining operations with ASX listed Companies including Auric Mining Limited and Horizon Minerals Limited.
- Once project expenses have been paid with costs being re-imbursed from operational cashflow, the net surplus cash will be split 50/50 between GIB and BML on an ongoing basis until the cessation of the BML-GIB agreement
- There are no forward sales locked in for this mining operation and all production will be sold into the spot gold market
- The above permitting represents the final regulatory hurdle towards mining the Neta gold deposit. Neta has an Indicated and Inferred JORC (2012) Resource of 378,000 tonnes @1.9 g/t for 24,000 oz Au which includes an Indicated Resource of 110,000 tonnes @ 2.2g/t for 8,000 oz Au<sup>1</sup>
- The market will be updated when mining commences

For personal use only

**Figure 1: Neta Prospect’s Mine Plan, Edjudina Gold Project**

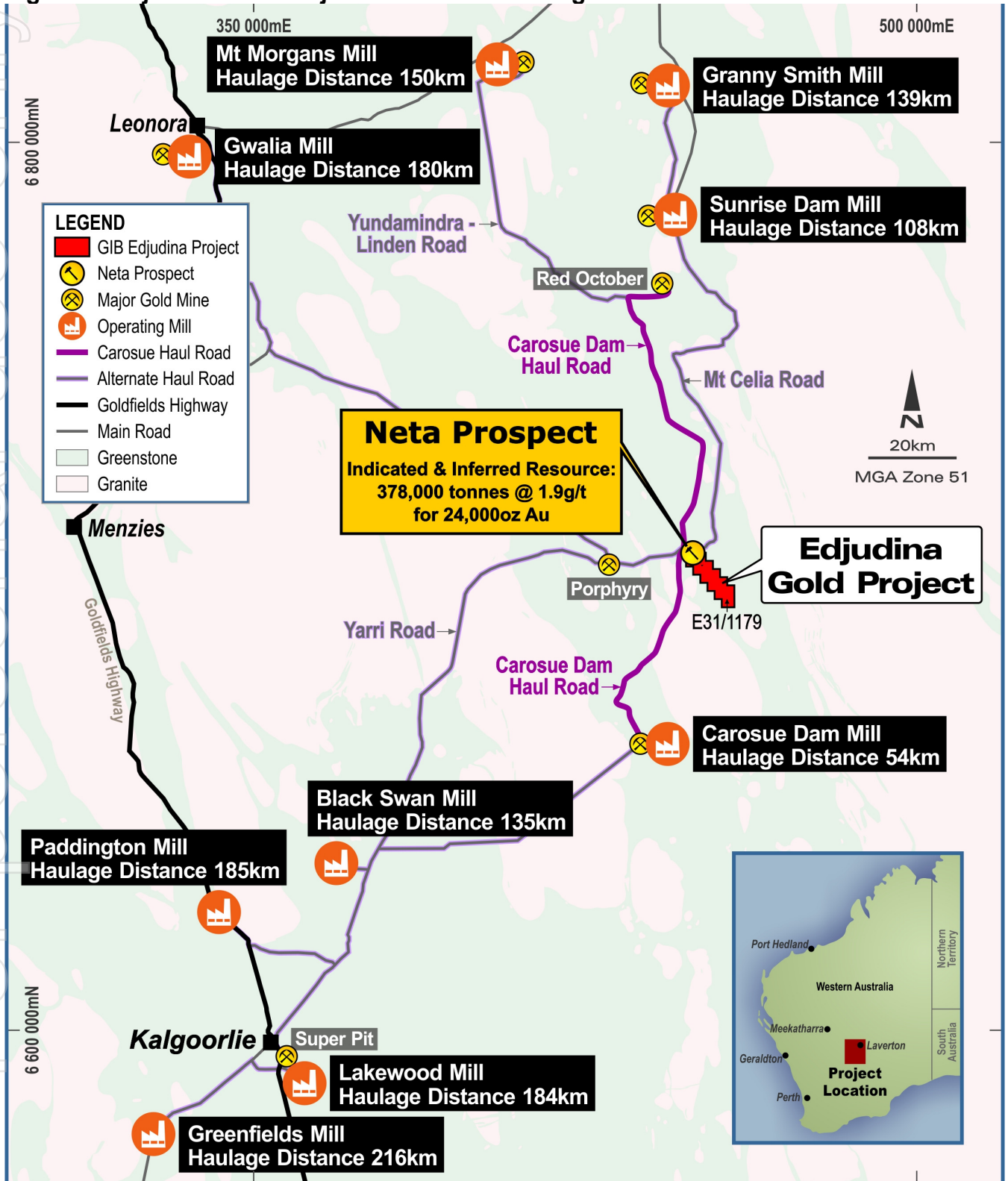


**About the Edjudina Gold Project**

GIB’s Edjudina Gold Project is 145km north east of Kalgoorlie and is located in the heart of the Eastern Goldfields of WA. The project includes the Neta Prospect which has an Indicated and Inferred JORC (2012) Resource of 378,000 tonnes @1.9 g/t for 24,000 oz Au which includes an Indicated Resource of 110,000 tonnes @ 2.2g/t for 8,000 oz Au<sup>1</sup>.

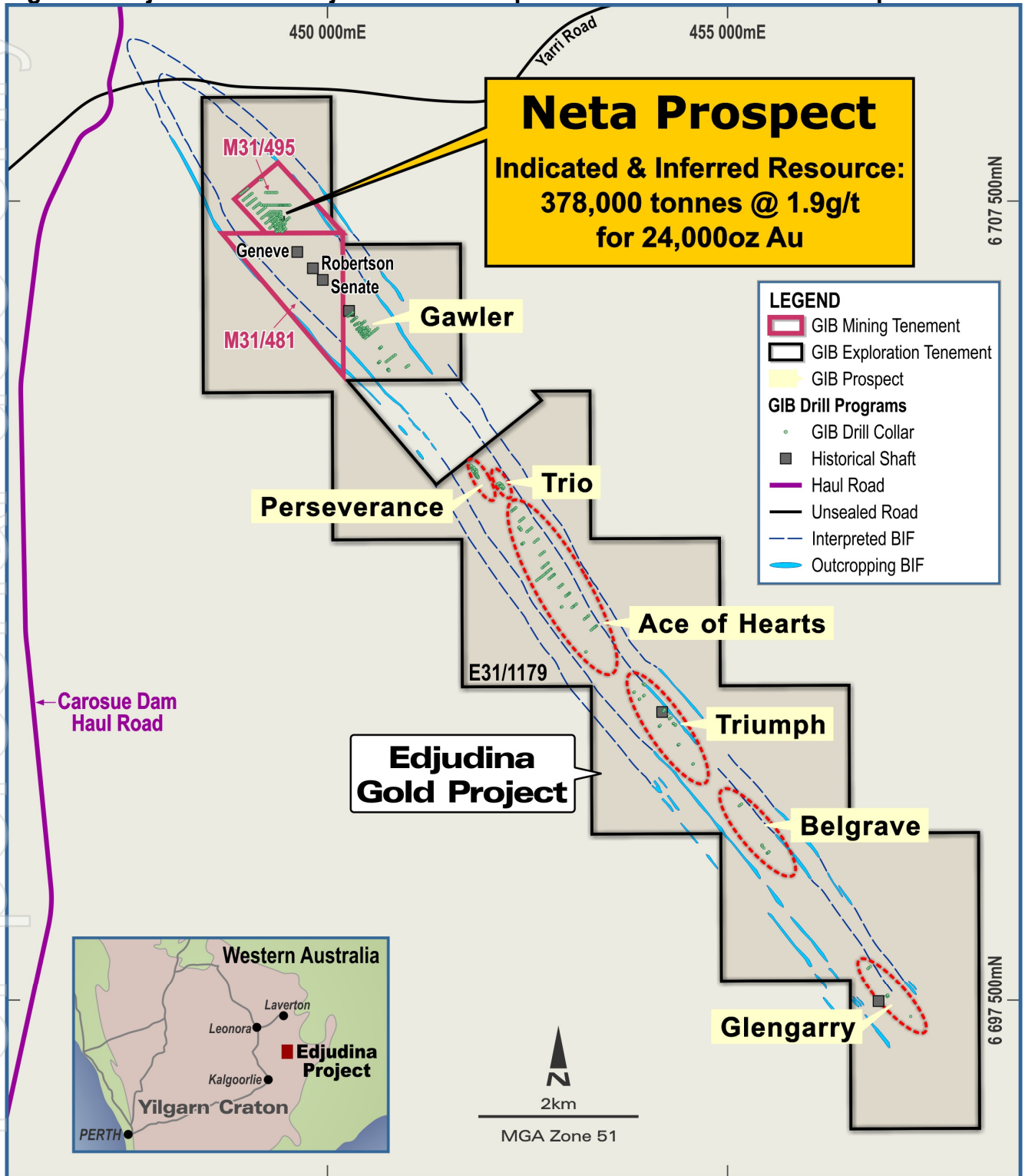
GIB are in the process of developing the Neta Gold Prospect for mining together with private mining contractor BML. A Mining Proposal for Neta has recently been granted by the West Australian Mines Department (DMPE) and GIB anticipates the mobilisation of plant and equipment during August 2025 to facilitate ground preparation and logistics requirements prior to the commencement of mining at the Neta Prospect.

Figure 2: Edjudina Gold Project & Distances to Regional Gold Mills



NB: Black Swan Mill is currently not currently configured for gold

Figure 3: Edjudina Gold Project – Neta Prospect Location & Tenements Map



For personal use only

Jim Richards  
Executive Chairman

Enquiries To: Mr Jim Richards +61 8 9422 9500

NB: this report does not contain any new exploration results or new GIB resources and as such no Table 1 is included

### Competent Persons Statement

*The information in this report that relates to new or previously reported historic information, exploration results and/or JORC Resources is based on information compiled by Mr. Jim Richards who is a Member of The Australasian Institute of Mining and Metallurgy and a Member of the Australian Institute of Geoscientists. Mr. Richards is a Director of Gibb River Diamonds Limited. Mr. Richards has sufficient experience which is relevant to the style of mineralisation and type of deposit under consideration and to the activity which he is undertaking to qualify as Competent Person as defined in the 2012 Edition of the Australasian Code for Reporting of Exploration Results, Mineral Resources and Ore Reserves. Mr. Richards consents to the inclusion in the report of the matters based on the information in the form and context in which it appears*

### References & Selected Previous ASX Releases:

- <sup>1</sup>Edjudina Gold Project Maiden JORC Resource – Neta Prospect; GIB ASX Release dated 14 November 2023
- <sup>2</sup>GIB Acquires Option to Purchase the Historic and High Grade Edjudina Gold Project in the Eastern Goldfields of WA; GIB ASX Release dated 16 July 2020
- <sup>3</sup>Acquisition of 'Missing Link' Mining Lease M31/481 Edjudina Gold Project, WA; GIB ASX Release dated 3 September 2024
- <sup>4</sup>Mining Benefits Agreement Signed, Edjudina Gold Project, WA; GIB ASX Release dated 23 December 2024
- <sup>5</sup>Edjudina Gold Project, Inferred JORC Gold Resource for Historic Leach Pads; GIB ASX Release dated 7 March 2025
- <sup>6</sup>Edjudina Gold Project, Contract Mining Agreement Executed; GIB ASX Release dated 21 May 2025
- <sup>7</sup>Edjudina Gold Project, Heritage Survey Successfully Completed; GIB ASX Release dated 16 June 2025
- <sup>8</sup>Edjudina Gold Project, Mining Permitting and Status Update; GIB ASX Release dated 30 June 2025
- <sup>9</sup>Edjudina Gold Project, Grade Control Drilling Programs Underway; GIB ASX Release dated 24 July 2025

END