



SOIL ASSAYS AND HISTORICAL DRILLING RESULTS GENERATE COMPELLING NEW GOLD TARGETS AT THE GOLD CITY PROSPECT

Highlights

- Recent soil assay results, together with historical drilling, has defined three new gold anomalies at the Gold City prospect, located 20km south of the Van Uden Gold Project
- The results define compelling new gold targets for drilling, which will be tested as part of planned upcoming drill programmes
- Gold City provides potential for strategic additions to the resource endowment at Van Uden

TG Metals Limited (**TG Metals** or the **Company**) (ASX:TG6) is pleased to provide new exploration results for the Gold City prospect (**Gold City**) which was acquired earlier this year as part of the Van Uden Gold Project (**Van Uden** or the **Project**) and lies 20km south of the Van Uden gold deposit.

The soil sampling covers the main tenement areas of Gold City over both historical gold workings and previously unexplored areas. The soil sampling has expanded the area of interest around the historic gold workings at Gold City, which have been successfully tested by past drilling¹ and identified new targets with similar magnitude gold in soils anomalism. Previous historical drilling intercepts¹ include:

- GCRC005: 25m @ 1.09 g/t Au from 18m
- GCRC009: 14m @ 2.26 g/t Au from 20m and 13m @ 1.09 g/t Au from 40m
- WTR007: 3m @ 2.48 g/t Au from 19m
- WTR008: 6m @ 1.10 g/t Au from 22m

Figure 1 shows the Gold City prospect and the extensive soil sampling coverage with the new anomalies.

TG Metals CEO, Mr. David Selfe stated;

“This is a great result for TG Metals. The Gold City prospect was known to have gold mineralisation associated with the historical gold workings, but these new soil results show a significantly increased mineralised trend and has generated compelling new gold targets for drill testing.

The new soil results are analogous to those already seen over the mineralisation defined by historical drilling, which is clearly a positive sign. This potentially opens up the Gold City prospect as a significant second gold centre for the Van Uden Gold Project and a future expansion of our substantial resources base as we progress towards first production.

1. Historical drilling results restated ASX release 6 March 2025

Following completion of the Company's capital raising, we will be well positioned to push ahead to commence drilling these targets as soon as possible."

For personal use only

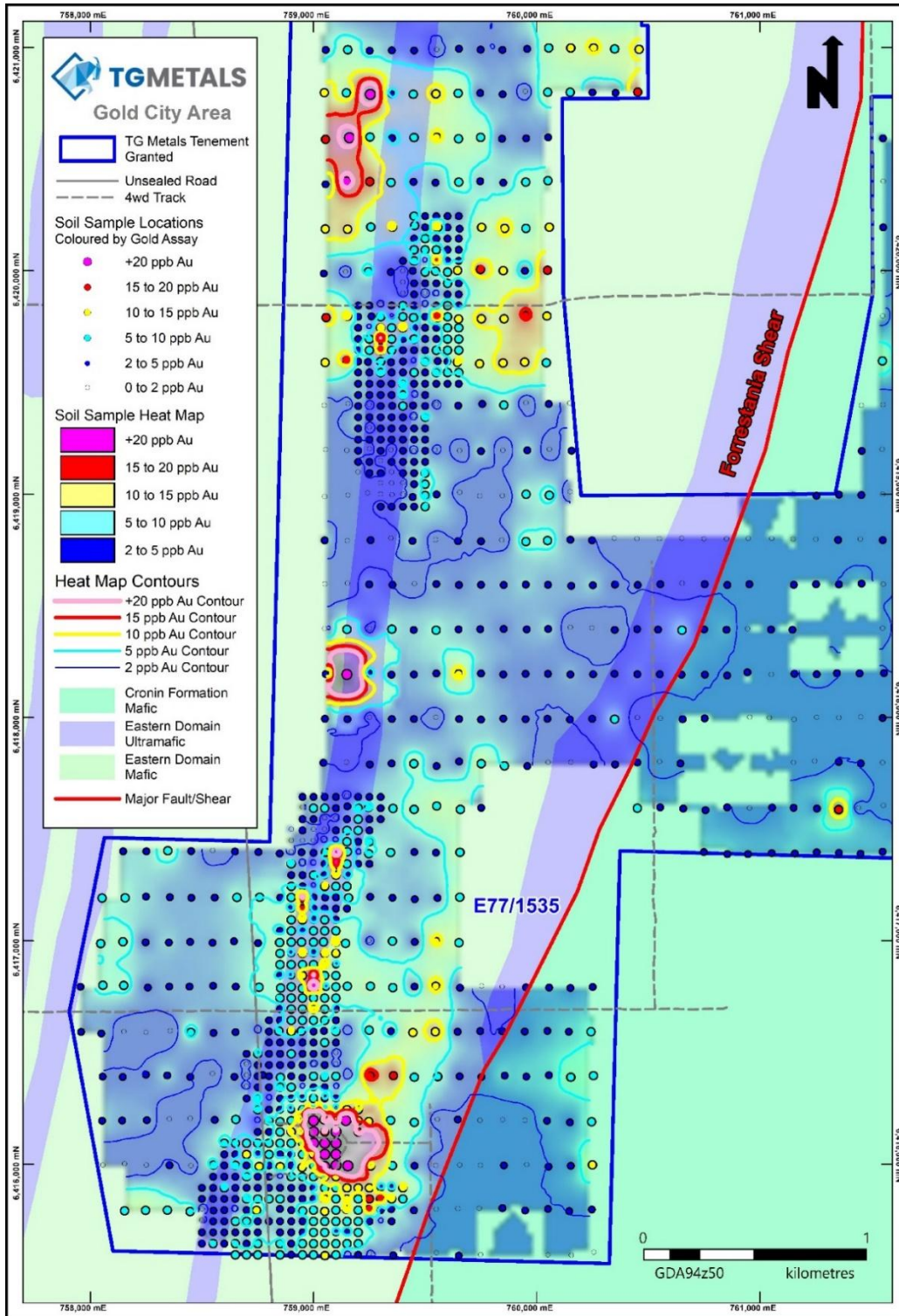


Figure 1 – Soil sampling results at Gold City

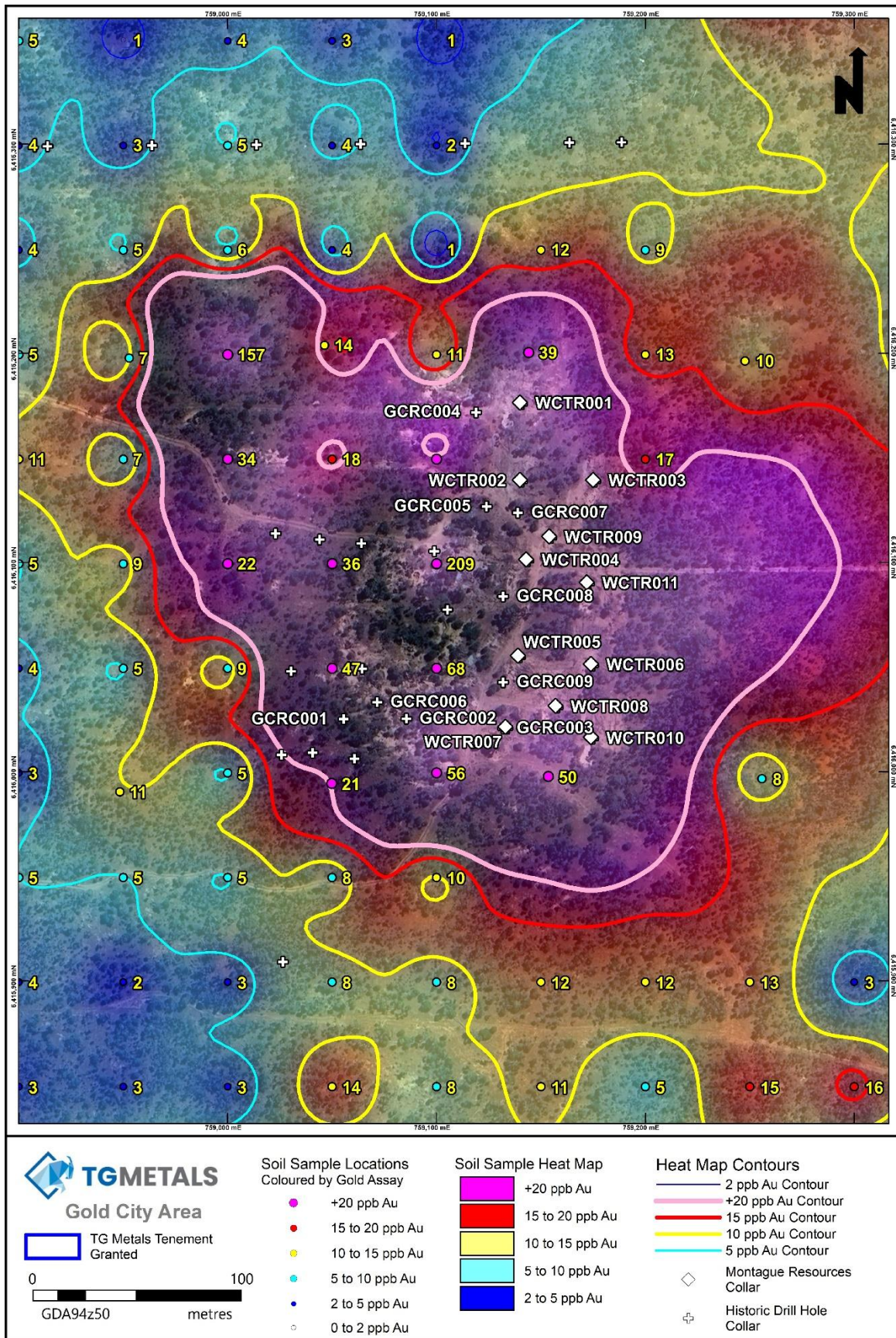


Figure 2 – Gold in soil anomalies including Gold City historical workings area

For personal use only

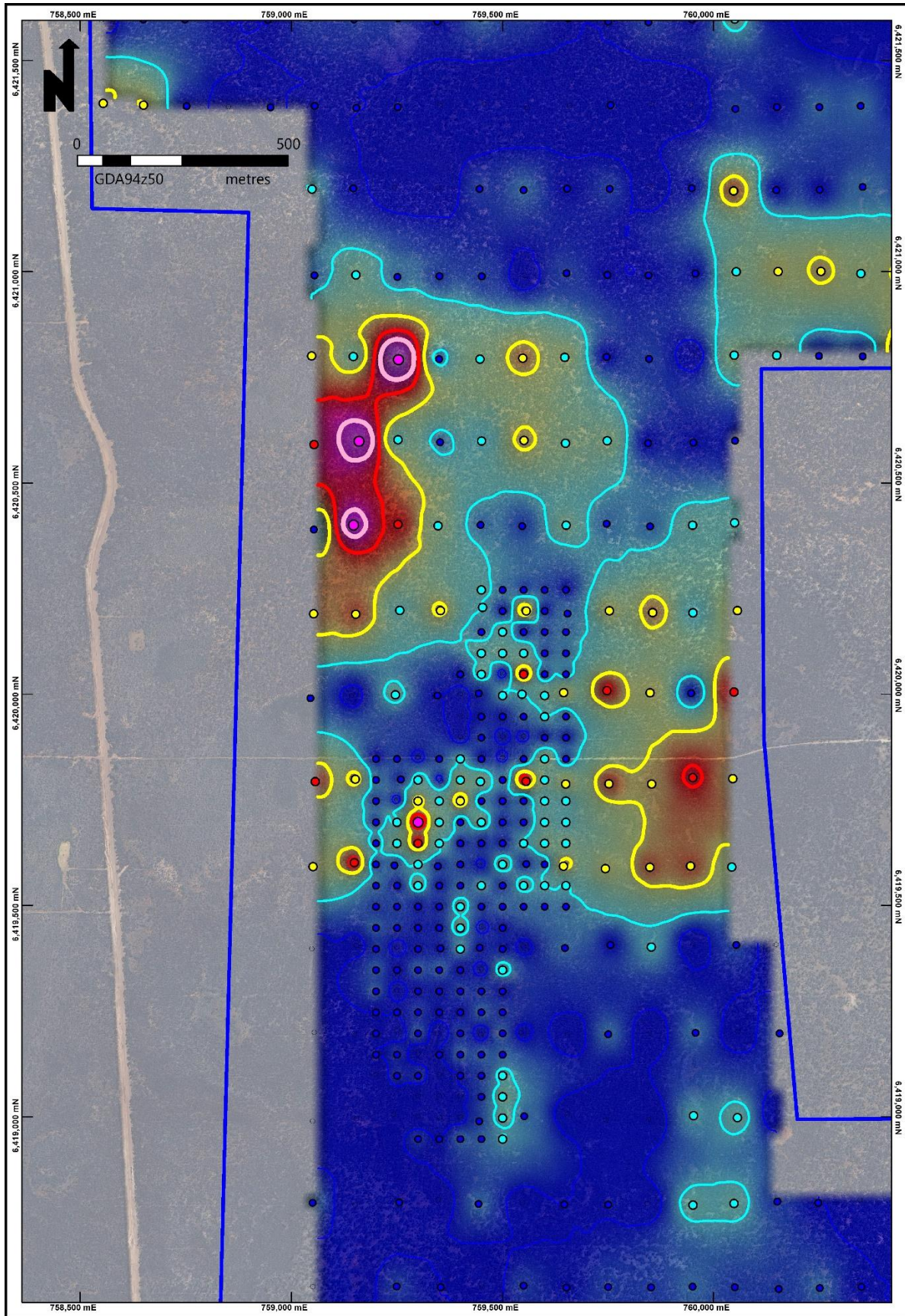


Figure 3 – Gold in soil anomalies, new zones north of historical workings, map legend as per Figure 2

For personal use only



Soil Sampling and Historical Drilling

Soil sampling was conducted over the entire main tenement area as shown in Figure 1. The broad spaced grid of 100m x 200m soils were collected by Kidman Resources in 2019 and originally analysed for Lithium and associated elements. No gold assays were performed at that time. The pattern was selected to give whole of tenement coverage for Lithium exploration.

A 50m x 50m pattern was collected by Montague Resources Australia Pty Ltd (**Montague**) in 2025 and analysed multi-elements for lithium and fire assay for gold. The closer spaced pattern was selected on low level Sb (antimony), which was used as a proxy for Au in the original 200m x 100m pattern conducted in 2019.

Recently, TG Metals assayed the 200m x 100m soils pulps with 50g fire assay to merge with the 50m x 50m pattern Montague data.

Historical drilling for gold was concentrated around the historical workings in the south of the tenement as shown in Figure 2. Other drilling on the tenement was focused on nickel and lithium exploration and was not assayed for gold. The Company does not have access to these historical drilling samples to re-assay for gold. Figure 2 also shows the collar locations of the historical gold drilling. These drillholes were re-stated in the acquisition announcement (ASX: 6 March 2025).

Gold Anomalies

The new northern gold in soil anomalies has been defined over two main zones for a total of 1.5Km strike length (two 750m anomalies), Figure 3 and a third zone to the north of the historical workings defined by the close spaced 50m x 50m soil sample spacing. The northern anomalies are untested by gold focused drilling.

The detailed sampling by Montague, over the historical gold workings, expanded the footprint of the target, from 250m as defined by the workings, to a 700m gold in soil anomaly.

The gold in soil anomalies of significance are all located to the west of the Forrestania Shear, a major structure in the Forrestania greenstone belt. They are also in close proximity and either side of a magnetic high interpreted as an ultramafic unit with a north-south strike. Outcrop is sparse in this western part of the Project and drilling will be required to reveal the true lithological sequence however it is apparent that this magnetic/ultramafic feature has some control on gold mineralisation.

Peak gold assay occurs in the centre of the Gold City workings, and the second highest anomaly occurs northwest of the workings in an area that shows no previous historical or recent disturbance.

The tenor of the northern anomalies approach that seen at the historical workings. This area is a priority for further investigations, with the potential for similar gold mineralisation occurrences, as seen in the south.



Follow-up Work

Detailed infill and extension soil sampling will be completed where required over the current wide spaced (200m x 100m) soils grid. For areas where the detail of results to date (50m x 50m soils grid) is sufficient, immediate drilling programs will be designed and the lodgment of Programmes of Work (POWs) and Heritage Surveys will be completed. Development works on the Van Uden stockpiles are continuing.

Van Uden Gold Project Description

The Project is located on the Forrestania Greenstone Belt, Figure 4, 90km east-northeast of Hyden and 120km south of Southern Cross. It is close to the Marvel Loch (producing) and Westonia - Edna May (care & maintenance) gold processing Plants and is 130km from the Company's established Burmeister lithium deposit at the Lake Johnston Project.

Van Uden Gold consists of an Indicated and Inferred Mineral Resource of 6.35Mt at 1.1g/t Au for 227,140 oz gold (ASX release 5 June 2025) on four granted mining leases, four granted exploration licences, one exploration licence application and two miscellaneous licences (for haul roads). The Project lies to the west of the Mt Holland lithium mine, south of the operating Marvel Loch gold Plant, and southeast of the Edna May gold Plant.

About TG Metals

TG Metals is an ASX listed company focused on exploring and developing gold and lithium assets at its wholly owned Lake Johnston Project and 80% owned Van Uden Gold Project in the stable jurisdiction of Western Australia. The Lake Johnston Project hosts the Burmeister high grade lithium deposit, Jaegermeister lithium pegmatites and several surrounding lithium prospects. Burmeister is in proximity to four lithium processing plants and undeveloped deposits. The Van Uden Gold Project contains past producing gold mines and is in proximity to operating gold processing Plants.

Authorised for release by TG Metals Board of Directors.

Contact

Mr David Selfe
Chief Executive Officer
Email: info@tgmets.com.au

Investor Relations

Evy Litopoulous
ResolveIR
Email: evy@resolveir.com



TGMETALS

For personal use only

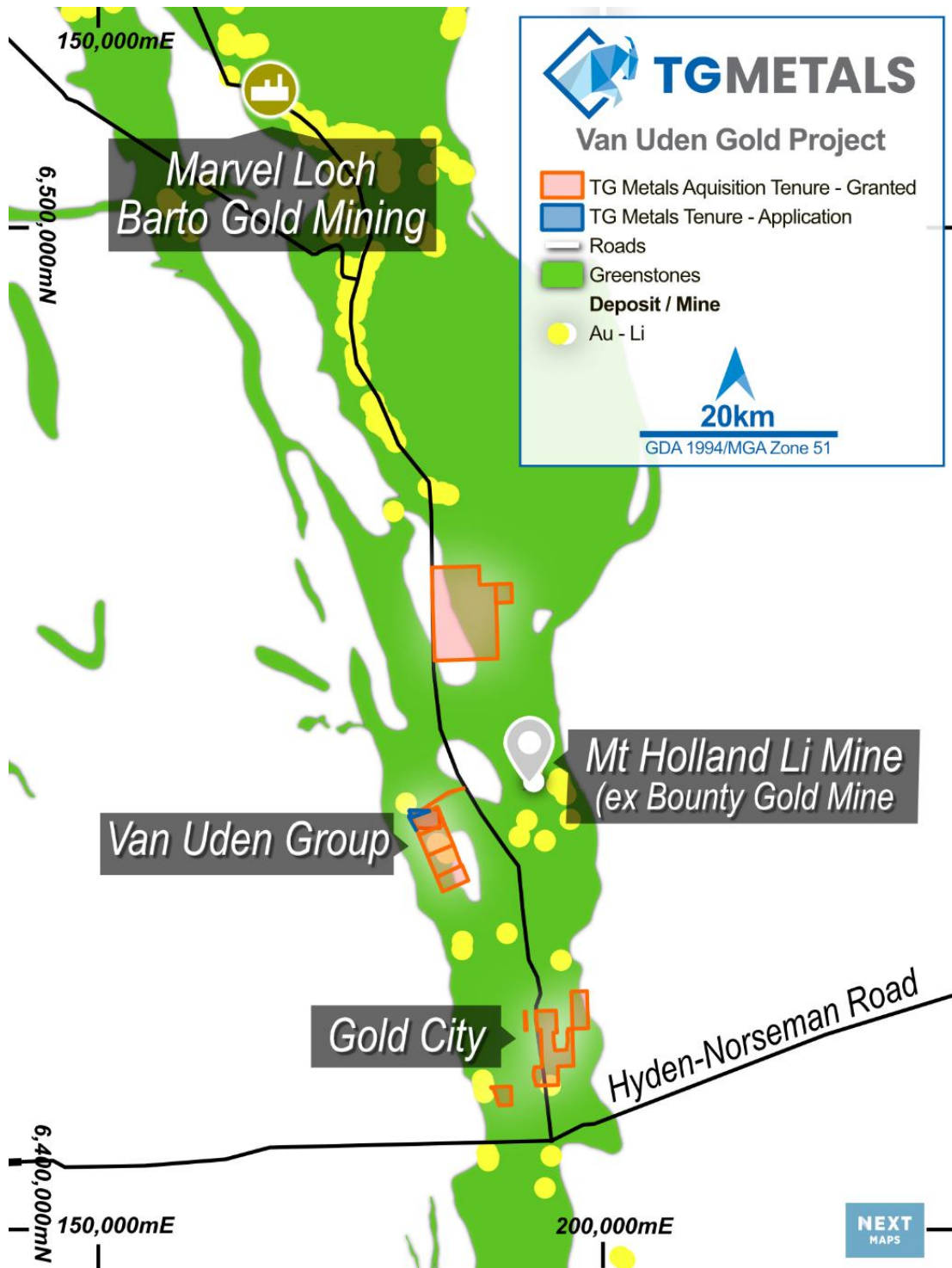


Figure 4 – Location Map showing TG Metals' Van Uden Gold Project



Competent Person Statement

Information in this announcement that relates to exploration results, exploration strategy, exploration targets, geology, drilling and mineralisation is based on information compiled by Mr David Selfe who is a Fellow of the Australasian Institute of Mining and Metallurgy and an employee of TG Metals Limited. Mr Selfe has sufficient experience that is relevant to the style of mineralisation and type of deposit under consideration and to the activities that he is undertaking to qualify as a Competent Person as defined in the 2012 Edition of the Australasian Code for Reporting of Exploration Results, Mineral Resources and Ore Reserves. Mr Selfe has consented to the inclusion in this report of matters based on their information in the form and context in which it appears. Mr Selfe considers that the information in this announcement is an accurate representation of the available data and studies for the Van Uden Gold Project.

Forward Looking Statements

This announcement may contain certain statements that may constitute “forward looking statements”. Such statements are only predictions and are subject to inherent risks and uncertainties, which could cause actual values, results, performance achievements to differ materially from those expressed, implied or projected in any forward looking statements.

Forward-looking statements are statements that are not historical facts. Words such as “expect(s)”, “feel(s)”, “believe(s)”, “will”, “may”, “anticipate(s)” and similar expressions are intended to identify forward-looking statements. These statements include, but are not limited to statements regarding future production, resources or reserves and exploration results. All such statements are subject to certain risks and uncertainties, many of which are difficult to predict and generally beyond the control of the Company, that could cause actual results to differ materially from those expressed in, or implied or projected by, the forward-looking information and statements. These risks and uncertainties include, but are not limited to: (i) those relating to the interpretation of drill results, the geology, grade and continuity of mineral deposits and conclusions of economic evaluations, (ii) risks relating to possible variations in reserves, grade, planned mining dilution and ore loss, or recovery rates and changes in project parameters as plans continue to be refined, (iii) the potential for delays in exploration or development activities or the completion of feasibility studies, (iv) risks related to commodity price and foreign exchange rate fluctuations, (v) risks related to failure to obtain adequate financing on a timely basis and on acceptable terms or delays in obtaining governmental approvals or in the completion of development or construction activities, and (vi) other risks and uncertainties related to the Company’s prospects, properties and business strategy. Our audience is cautioned not to place undue reliance on these forward-looking statements that speak only as of the date hereof, and we do not undertake any obligation to revise and disseminate forward-looking statements to reflect events or circumstances after the date hereof, or to reflect the occurrence of or non-occurrence of any events.

The Company believes that it has a reasonable basis for making the forward-looking Statements in the presentation based on the information contained in this and previous ASX announcements.

The Company is not aware of any new information or data that materially affects the information included in this ASX release, and the Company confirms that, to the best of its knowledge, all material assumptions and technical parameters underpinning the exploration results in this release continue to apply and have not materially changed.

Table A – Soil Sample Results >10ppb Au

SiteID	MGA GDA94 zone 50 S			Au (ppb)
	Easting (m)	Northing (m)	rL (m)	
GCS397	759100	6416100	380	209
GCS375	759000	6416200	380	157
GCY742	759149	6418198	395	83
GCS408	759100	6416050	380	68
GCS414	759100	6416000	380	56
GCY1016	759153	6415998	393	50
GCS407	759050	6416050	380	47
GCY993	759144	6416201	393	39
GCS396	759050	6416100	380	36
GCS219	759100	6417400	380	34
GCS285	759000	6416800	380	34
GCS383	759000	6416150	380	34
GCY476	759253	6420795	399	31
GCY122	763055	6423195	393	28
GCY494	759160	6420601	401	26
GCY510	759147	6420403	402	23
GCY886	758952	6417200	405	22
GCS068	759300	6419700	380	22
GCS395	759000	6416100	380	22
GCY1015	759050	6415995	392	21
GCS385	759100	6416150	380	21
GCS225	759100	6417350	380	20
GCS281	759000	6416850	380	20
GCY562	759556	6419797	409	19
GCY971	759254	6416401	383	19
GCS384	759050	6416150	380	18
GCY493	759054	6420594	402	17
GCY574	759149	6419605	415	17
GCS386	759200	6416150	380	17
GCY548	759747	6420012	405	16
GCY551	760048	6420008	409	16
GCY566	759950	6419806	413	16
GCY1039	759247	6415802	391	16
GCS078	759300	6419650	380	16
GCS464	759300	6415850	380	16
GCY488	760452	6420806	395	15
GCY511	759252	6420405	401	15
GCY557	759056	6419796	413	15
GCY842	761353	6417594	381	15
GCY972	759358	6416402	385	15
GCS021	759550	6420050	380	15
GCS245	758950	6417150	380	15
GCS463	759250	6415850	380	15
GCY530	759556	6420200	399	14
GCY564	759752	6419791	414	14
GCY992	759046	6416204	392	14
GCY1050	759051	6415597	386	14
GCS296	759000	6416700	380	14
GCS459	759050	6415850	380	14
GCY435	760047	6421194	403	13
GCY490	761752	6420799	391	13
GCY526	759152	6420192	405	13
GCY540	761952	6420202	393	13
GCY581	759849	6419594	410	13
GCY582	759945	6419597	408	13

SiteID	MGA GDA94 zone 50 S			Au (ppb)
	Easting (m)	Northing (m)	rL (m)	
GCY951	759545	6416599	383	13
GCS060	759400	6419750	380	13
GCS280	758950	6416850	380	13
GCS377	759200	6416200	380	13
GCS444	759250	6415900	380	13
GCY479	759548	6420798	397	12
GCY525	759053	6420193	405	12
GCY533	759856	6420196	399	12
GCY558	759151	6419802	409	12
GCY579	759644	6419596	407	12
GCY747	759649	6418201	391	12
GCY927	759547	6416803	386	12
GCY1038	759146	6415805	389	12
GCS233	759100	6417300	380	12
GCS251	758950	6417100	380	12
GCS265	759100	6417000	380	12
GCS268	758950	6416950	380	12
GCS276	759050	6416900	380	12
GCS371	759150	6416250	380	12
GCS442	759150	6415900	380	12
GCS443	759200	6415900	380	12
GCY243	762951	6422399	404	11
GCY390	758554	6421402	402	11
GCY467	760254	6421004	406	11
GCY469	760458	6420997	401	11
GCY474	759048	6420804	402	11
GCY498	759551	6420604	398	11
GCY528	759353	6420201	402	11
GCY547	759645	6420007	403	11
GCY563	759650	6419790	409	11
GCY565	759853	6419791	415	11
GCY567	760045	6419803	412	11
GCY573	759051	6419595	416	11
GCY909	759548	6417002	398	11
GCY1014	758948	6415991	389	11
GCY1027	760249	6416003	381	11
GCS058	759300	6419750	380	11
GCS238	759050	6417250	380	11
GCS270	759050	6416950	380	11
GCS307	758900	6416600	380	11
GCS376	759100	6416200	380	11
GCS381	758900	6416150	380	11
GCS447	759400	6415900	380	11
GCS461	759150	6415850	380	11
GCS465	759350	6415850	380	11
GCY245	763149	6422398	396	10
GCY391	758650	6421398	401	10
GCY466	760153	6421003	404	10
GCY532	759753	6420200	401	10
GCY535	760056	6420201	403	10
GCY549	759850	6420006	404	10
GCY580	759744	6419590	408	10
GCY950	759445	6416596	384	10
GCY994	759248	6416197	395	10
GCY1012	758756	6415996	397	10
GCY1013	758851	6415995	393	10
GCY1034	758744	6415799	391	10
GCY1037	759050	6415795	387	10
GCS271	759100	6416950	380	10
GCS400	758700	6416050	380	10
GCS428	759100	6415950	380	10

JORC Code, 2012 Edition – Table 1

Section 1 Sampling Techniques and Data

Criteria	JORC Code explanation	Commentary
Sampling techniques	<ul style="list-style-type: none"> <i>Nature and quality of sampling (eg cut channels, random chips, or specific specialised industry standard measurement tools appropriate to the minerals under investigation, such as down hole gamma sondes, or handheld XRF instruments, etc). These examples should not be taken as limiting the broad meaning of sampling.</i> <i>Include reference to measures taken to ensure sample representivity and the appropriate calibration of any measurement tools or systems used.</i> <i>Aspects of the determination of mineralisation that are Material to the Public Report.</i> <i>In cases where 'industry standard' work has been done this would be relatively simple (eg 'reverse circulation drilling was used to obtain 1 m samples from which 3 kg was pulverised to produce a 30 g charge for fire assay'). In other cases more explanation may be required, such as where there is coarse gold that has inherent sampling problems. Unusual commodities or mineralisation types (eg submarine nodules) may warrant disclosure of detailed information.</i> 	<p>Soil samples were collected by spade (at approx. 20cm) and sieved in the field to pass 2mm sieve to obtain up to 1kg of sample. The sample was placed in a pre-numbered calico bag and dispatched to Australian Laboratory Services Pty Ltd (ALS) located in Perth WA, for low detection level gold analysis by fire assay.</p> <p>Soil sampling was conducted on a 100m x 200m and 50m x 50m in target areas previously identified having gold potential within E77/1535. The pattern was aligned to the orientation of the target structures. TG Metals Limited inserted gold standard and sample duplicate every 50 samples. ALS standards and laboratory replicates were reported and used by TG Metals Limited for QA/QC reporting.</p> <p>No mineralisation was observed in the soil samples results and determination of anomalism was based on ALS assay results. All samples for assay were submitted to a Certified Laboratory – Australian Laboratory Services Pty Ltd.</p> <p>All samples dispatched to ALS for Au by fire assay and Inductively Coupled Plasma Atomic Emission Spectrometry (ICP-AES) were homogenised and pulverized. 50g of sample was mixed with flux composed of PbO and SiO₂ and variable amounts of borax, soda ash and other reagents. The flux and sample mix were then heated at high temperature (>1,000°C) to decompose rock lattices and allow gold within the sample to be collected into a lead button. The button was placed in a porous cupel and heated again in an oxidising environment to convert lead to lead oxide that is absorbed into the cupel, leaving the precious metals behind as a doré bead or prill. The gold content of the prill is then determined/measured by ICP-</p>

Criteria	JORC Code explanation	Commentary
		AES analytical technique.
Drilling techniques	<ul style="list-style-type: none"> • <i>Drill type (eg core, reverse circulation, open-hole hammer, rotary air blast, auger, Bangka, sonic, etc) and details (eg core diameter, triple or standard tube, depth of diamond tails, face-sampling bit or other type, whether core is oriented and if so, by what method, etc).</i> 	No drilling results were included in this report.
Drill sample recovery	<ul style="list-style-type: none"> • <i>Method of recording and assessing core and chip sample recoveries and results assessed.</i> • <i>Measures taken to maximise sample recovery and ensure representative nature of the samples.</i> • <i>Whether a relationship exists between sample recovery and grade and whether sample bias may have occurred due to preferential loss/gain of fine/coarse material.</i> 	<p>No drilling results were included in this report.</p> <p>No drilling results were included in this report.</p> <p>No drilling results were included in this report.</p>
Logging	<ul style="list-style-type: none"> • <i>Whether core and chip samples have been geologically and geotechnically logged to a level of detail to support appropriate Mineral Resource estimation, mining studies and metallurgical studies.</i> • <i>Whether logging is qualitative or quantitative in nature. Core (or costean, channel, etc) photography.</i> • <i>The total length and percentage of the relevant intersections logged.</i> 	<p>Soil sample substrate/regolith was recorded.</p> <p>All observations are qualitative in nature.</p> <p>No drilling results were included in this report.</p>
Sub-sampling techniques and sample preparation	<ul style="list-style-type: none"> • <i>If core, whether cut or sawn and whether quarter, half or all core taken.</i> • <i>If non-core, whether riffled, tube sampled, rotary split, etc and whether sampled wet or dry.</i> • <i>For all sample types, the nature, quality and appropriateness of the sample preparation technique.</i> • <i>Quality control procedures adopted for all sub-sampling stages to</i> 	<p>No drilling results were included in this report.</p> <p>No drilling results were included in this report.</p> <p>Samples collected in the field were hand sieved to pass 2mm, with the fines collected and coarse rejected. Samples were transported to ALS for analysis that were homoeogenised and pulverised in the laboratory.</p>

Criteria	JORC Code explanation	Commentary
	<p><i>maximise representivity of samples.</i></p> <ul style="list-style-type: none"> <i>Measures taken to ensure that the sampling is representative of the in situ material collected, including for instance results for field duplicate/second-half sampling.</i> <i>Whether sample sizes are appropriate to the grain size of the material being sampled.</i> 	<p>Industry gold standards were inserted by ALS. Laboratory replicates were measured and reported. TG Metals sample duplicates and gold standard were inserted at the 50th sample interval</p> <p>The sieved field sample of +1kg was appropriate for the grain size of the surface material.</p> <p>The sample preparation technique and sample size were considered appropriate for the material being sampled.</p>
<p>Quality of assay data and laboratory tests</p>	<ul style="list-style-type: none"> <i>The nature, quality and appropriateness of the assaying and laboratory procedures used and whether the technique is considered partial or total.</i> <i>For geophysical tools, spectrometers, handheld XRF instruments, etc, the parameters used in determining the analysis including instrument make and model, reading times, calibrations factors applied and their derivation, etc.</i> <i>Nature of quality control procedures adopted (eg standards, blanks, duplicates, external laboratory checks) and whether acceptable levels of accuracy (ie lack of bias) and precision have been established.</i> 	<p>All samples dispatched to ALS were analysed for gold by fire assay using ICP-AES. Samples were homogenised and pulverised from which 50g of sample was mixed with flux composed of PbO and SiO₂ with variable amounts of borax, soda ash and other reagents. The flux and sample were mixed, then heated at high temperature (>1,000°C) to decompose rock lattices and allow gold within the sample to be collected into a lead button. The button was placed in a porous cupel and heated again in an oxidising environment to convert lead to lead oxide that is absorbed into the cupel, leaving the precious metals behind as a doré bead or prill. The gold content of the prill is then determined by ICP-AES. This analytical method was chosen to detect low level gold as advised by ALS.</p> <p>No other instruments or tools were used during this program.</p> <p>First pass plots of sample replicate repeatability and standard results recorded against expected were within TG Metals Limited acceptable range.</p>
<p>Verification of sampling</p>	<ul style="list-style-type: none"> <i>The verification of significant intersections by either independent or alternative company personnel.</i> 	<p>No drilling results were included in this report.</p>

Criteria	JORC Code explanation	Commentary
and assaying	<ul style="list-style-type: none"> <i>The use of twinned holes.</i> <i>Documentation of primary data, data entry procedures, data verification, data storage (physical and electronic) protocols.</i> <i>Discuss any adjustment to assay data.</i> 	<p>No drilling results were included in this report.</p> <p>Data was collated in Microsoft Office Excel, formatted with headers and uploaded into TG Metals Limited Micromine Database. Validation errors, if any, were rectified during import. All TG Metals Limited data and the Micromine Database are backed up regularly on a secure cloud storage.</p> <p>All data below detection limit were entered as zero in the database. No adjustments were made to the reported assay data.</p>
Location of data points	<ul style="list-style-type: none"> <i>Accuracy and quality of surveys used to locate drill holes (collar and down-hole surveys), trenches, mine workings and other locations used in Mineral Resource estimation.</i> <i>Specification of the grid system used.</i> <i>Quality and adequacy of topographic control.</i> 	<p>All soil sample points were located using handheld GPS with a typical +- 3m accuracy on the X and Y axis.</p> <p>The field datum used was MGA_GDA94, Zone 50. All maps in this report are referenced to GDA94, Zone 50.</p> <p>No topographic control was applied to the data, hand held GPS height was used with a 5 to 10m accuracy on z axis.</p>
Data spacing and distribution	<ul style="list-style-type: none"> <i>Data spacing for reporting of Exploration Results.</i> <i>Whether the data spacing and distribution is sufficient to establish the degree of geological and grade continuity appropriate for the Mineral Resource and Ore Reserve estimation procedure(s) and classifications applied.</i> <i>Whether sample compositing has been applied.</i> 	<p>Soil sample spacing was conducted on a 100m x 200m grid which is appropriate for first past exploration for gold. 50m x 50m infill spacing was used in areas identified as gold potential via anomalous Sb assays in the 100m x 200m data.</p> <p>Not applicable for soil sampling.</p> <p>No sample compositing was completed.</p>

Criteria	JORC Code explanation	Commentary
Orientation of data in relation to geological structure	<ul style="list-style-type: none"> • <i>Whether the orientation of sampling achieves unbiased sampling of possible structures and the extent to which this is known, considering the deposit type.</i> • <i>If the relationship between the drilling orientation and the orientation of key mineralised structures is considered to have introduced a sampling bias, this should be assessed and reported if material.</i> 	<p>The sample grid and pattern was based on the orientation of the target structures, whereby the sample points were 100m across strike and spread out along strike. An infill 50m x 50m sampling grid was completed over historic workings and previously identified targets. The sample grid was orientated E-W, while the strike of stratigraphy is WNW. This allows for a slight offset in the coverage to ensure contacts are sampled across.</p> <p>No drilling results were included in this report.</p>
Sample security	<ul style="list-style-type: none"> • <i>The measures taken to ensure sample security.</i> 	<p>All samples were collected by company employees. Field staff recorded the calico number against the geographical coordinates of the sample location on the sampling sheet provided. The calico containing the sample were securely tied and placed directly in a Bulka bag to be transported to ALS in Perth. ALS has a strict sample tracking process to ensure the sample received was reported.</p>
Audits or reviews	<ul style="list-style-type: none"> • <i>The results of any audits or reviews of sampling techniques and data.</i> 	<p>Standards and replicates were cross-checked against expected values. No variances of greater than 2 standard deviations were reported.</p>

Section 2 Reporting of Exploration Results

Criteria	JORC Code explanation	Commentary
Mineral Tenement	<ul style="list-style-type: none"> • <i>Type, reference name/number, location and ownership including agreements or material issues with third parties such as joint ventures, partnerships, overriding royalties, native title interests, historical sites, wilderness or national park and environmental settings.</i> 	<p>The reported soil sampling program is located on exploration licence E77/1535. TG Gold Pty Ltd, a wholly owned subsidiary of TG Metals Limited, entered a Sales and Purchase Agreement on the 3 March 2025 with Montague Resources Pty Ltd (Montague) and Barto Gold Mining Pty Ltd to acquire Montague's 80% holding. TG Gold Pty Ltd has Power of Attorney (PoA – 43367) to manage and operate E77/1535 during the transfer of licence. The area is under ILUA legislation, and the claimants are the South West Aboriginal Land & Sea Council Aboriginal Corporation, ICNM 3832 for and on behalf of the Ballardong People Agreement Group.</p>

Criteria	JORC Code explanation	Commentary
	<ul style="list-style-type: none"> <i>The security of the tenure held at the time of reporting along with any known impediments to obtaining a licence to operate in the area.</i> 	At the time of reporting there were no known impediments to obtaining a license to operate in the area other than TG Metals Limited abiding to conditions set by DMPE. The tenement is in good standing.
Exploration Done by Other Parties	<ul style="list-style-type: none"> <i>Acknowledgement and appraisal of exploration by other parties.</i> 	Exploration in the area concentrated on gold conducted by Reynolds Australia, PacMin Mining Corporation, Convergent Minerals, Viceroy Australia Pty Ltd, Forrestania Gold NL, Sons of Gwalia Limited, St Barbara Mines Limited, Montague Resources Australia Pty Ltd, Kidman Resources Limited, Tianye SXO Gold Mining Pty Ltd, and MH Gold Ltd. Data has been obtained from WAMEX Open File reports.
Geology	<ul style="list-style-type: none"> <i>Deposit type, geological setting and style of mineralization.</i> 	The target areas are all located to the west of the Forrestania Shear, a major lineament in the Forrestania greenstone belt. They are also in proximity and either side of a magnetic high interpreted as an ultramafic unit with a N-S strike. Outcrops are sparse in western part of the target area and drilling will be required to reveal the true lithological sequence but it is apparent that this magnetic/ultramafic feature has some control on gold mineralisation.
Drillhole Information	<ul style="list-style-type: none"> <i>A summary of all information material to the understanding of the exploration results including a tabulation of the following information for all Material drillholes: easting and northing of the drillhole collar elevation or RL (Reduced Level – elevation above sea level in metres) of the drillhole collar dip and azimuth of the hole down hole length and interception depth hole length.</i> 	No drilling results were included in this release.
Data Aggregation Methods	<ul style="list-style-type: none"> <i>In reporting Exploration Results, weighting averaging techniques, maximum and/or minimum grade truncations (e.g. cutting of high grades) and cut-off grades are usually Material and should be stated</i> <i>Where aggregate intercepts incorporate short lengths of high grade results and longer lengths of low grade results, the procedure used for such aggregation should be stated and some typical examples of such aggregation should be shown in detail.</i> <i>The assumptions used for any reporting of metal equivalent values should be clearly stated.</i> 	<p>None used.</p> <p>No data aggregation has been applied to the data presented in this report.</p> <p>No assumptions were made.</p>

Criteria	JORC Code explanation	Commentary
Relationship Between Mineralisation Widths and Intercept Widths	<ul style="list-style-type: none"> <i>If the geometry of the mineralization with respect to the drillhole angle is known, its nature should be reported.</i> 	No drilling results were included in this report.
Diagrams	<ul style="list-style-type: none"> <i>Appropriate maps and sections (with scales) and tabulations of intercepts should be included for any significant discovery being reported. These should include but not be limited to a plan view of drillhole collar locations and appropriate sectional views.</i> 	Refer to the figures (maps in plan view) in the body of the report.
Balanced Reporting	<ul style="list-style-type: none"> <i>Where comprehensive reporting of all Exploration Results is not practicable, representative reporting of both low and high grades and/or widths should be practiced to avoid misleading reporting of Exploration Results.</i> 	Soil sample results are reported in grade ranges in conjunction with heat map contouring of the results (Figures 1-3)
Other Substantive Exploration Data	<ul style="list-style-type: none"> <i>Other exploration data, if meaningful and material, should be reported including (but not limited to): geological observations; geophysical survey results; geochemical survey results; bulk samples – size and method of treatment; metallurgical test results; bulk density, groundwater, geotechnical and rock characteristics; potential deleterious or contaminating substances.</i> 	Airborne geophysics, including recently acquired LIDAR imagery. Exploratory drilling and surface sampling data provided by Montague. Open file search data available via WAMEX.
Further Work	<ul style="list-style-type: none"> <i>The Nature and scale of planned further work (e.g. tests for lateral extensions or depth extensions or large scale step-out drilling).</i> <i>Diagrams clearly highlighting the areas of possible extensions, including the main geological interpretations and future drilling areas, provided this information is not commercially sensitive.</i> 	Exploratory drilling is warranted to test the defined surface anomalies at the extent of gold with depth. Refer to the figures in the body of the report.