

Monthly net tangible asset (NTA) backing per share and top 25 investments as at 31 July 2025

	Before Tax*	After Tax*
31 July 2025 Cum Div	\$8.51	\$7.10
30 June 2025 Cum Div	\$8.33	\$6.97

The Net Tangible Asset Backing per share for both 30 June and 31 July 2025 are before the provision of the final dividend of 14.5 cents per share and the special dividend of 5 cents per share.

* The before and after tax numbers relate to the provision for deferred tax on the unrealised gains in the Company's investment portfolio. The Company is a long term investor and does not intend disposing of its total long term investment portfolio. Under current Accounting Standards, the Company is required to provide for tax on any gains that may arise on such a theoretical disposal, after the utilisation of brought forward losses.

Key facts

Investment objectives: AFIC aims to provide shareholders with attractive investment returns through access to a growing stream of fully franked dividends and enhancement of capital invested over the medium to long term.

Benchmark: S&P/ASX 200 Accumulation Index.

Size of portfolio: \$10.8 billion at 31 July 2025.

Low Management cost: 0.16 per cent, no additional fees.

Investment style: Long-term, fundamental, bottom-up.

Suggested investment period: Five years to 10 years or longer.

Net asset backing (NTA): Estimated NTA released weekly and a monthly NTA with top 25 investments.

Listed on ASX and NZX: code AFI.

Key benefits

Diversified portfolio primarily of ASX-listed Australian equities.

Tax-effective income via fully franked dividends.

Consistent after tax paid investment returns achieved over the long term.

Professional management and an experienced Board, investment and management team.

Low-cost investing.

Ease of investing, transparent ASX pricing, good liquidity in shares.

Shareholder meetings on a regular basis.

Portfolio performance percentage per annum-periods ending 31 July 2025*

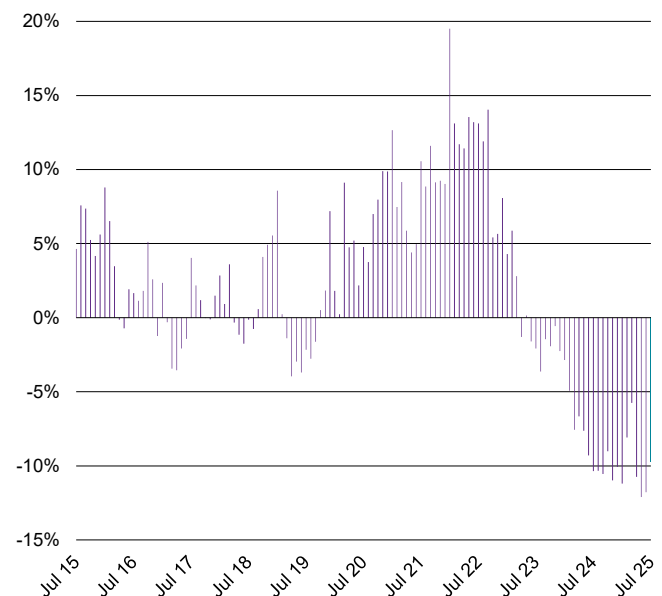


● Net asset per share growth plus dividends, including franking
● S&P/ASX 200 Accumulation Index, including franking

* Assumes an investor can take full advantage of the franking credits. AFIC's portfolio return is also calculated after management fees, income tax and capital gains tax on realised sales of investments. It should be noted that Index returns for the market do not include management expenses or tax.

Past performance is not indicative of future performance.

Share price premium/discount to NTA



Release authorised by Matthew Rowe, Company Secretary
Australian Foundation Investment Company Limited (AFIC) – ABN 56 004 147 120

Level 21, 101 Collins Street, Melbourne Victoria 3000
(03) 9650 9911 | invest@afi.com.au | afi.com.au

Share Registrar
MUG Corporate Markets (AU) Limited
au.investorcentre.mpms.mufg.com

1300 857 499 (in Australia)
+64 9375 5998 (outside Australia)
afi@cm.mpms.mufg.com

Market commentary

The S&P/ASX 200 Accumulation Index started the new financial year with a strong month in July with the Index up 2.4% as expectations for interest rate cuts became top of mind for investors as Australian CPI figures were lower than forecast.

Most sectors delivered positive performance for the month. The strongest sector was Health Care which was up 9.1%, with CSL amongst others stocks providing a boost to the sector. This is in contrast to the negative return of 4.6% that this sector delivered in the previous financial year. Other sectors that delivered negative returns last financial year that produced a strong start in July were Energy, which was up 5.7% and Materials up 4.1%. Other strong sectors for the month were Utilities up 5.1% and Information Technology up 5.0%

The only sector to deliver a negative contribution to the Index in July was Financials, down 1.0%, as very high bank valuations unwound marginally over the month.

For more information visit our website: afi.com.au

Portfolio facts

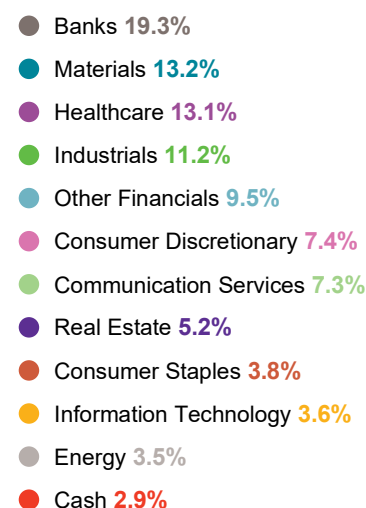
Top 25 investments valued at closing prices at 31 July 2025

	Total Value \$ Million	% of Portfolio
1 Commonwealth Bank of Australia	912.4	8.7%
2 BHP *	814.4	7.8%
3 CSL	716.0	6.9%
4 National Australia Bank *	479.6	4.6%
5 Wesfarmers	479.3	4.6%
6 Macquarie Group *	466.6	4.5%
7 Westpac Banking Corporation	449.2	4.3%
8 Goldman Group	405.4	3.9%
9 Transurban Group	364.8	3.5%
10 Telstra Group *	313.8	3.0%
11 ResMed *	272.5	2.6%
12 ANZ Group Holdings	227.8	2.2%
13 CAR Group	217.3	2.1%
14 Woodside Energy Group	217.1	2.1%
15 Woolworths Group	210.1	2.0%
16 James Hardie Industries *	209.5	2.0%
17 Rio Tinto	208.0	2.0%
18 Coles Group	191.5	1.8%
19 Computershare	153.0	1.5%
20 Xero	151.1	1.4%
21 ARB Corporation	142.2	1.4%
22 Amcor	141.8	1.4%
23 Cochlear	141.2	1.4%
24 Brambles	139.6	1.3%
25 ALS *	138.9	1.3%
Total	8,163.1	

As percentage of total portfolio value (excludes cash) 78.1%

* Indicates that options were outstanding against part of the holding

Investment by sector at 31 July 2025



Important Information

This information has been prepared by Australian Foundation Investment Company Limited (AFIC)(ABN 56 004 147 120) and is provided by its subsidiary Australian Investment Company Services Limited, holder of Australian Financial Services Licence 303209 (Provider). To the extent that this information includes any financial product advice, the advice is of a general nature only and does not take into account any individual's objectives, financial situation or particular needs. Before making an investment decision an individual should assess whether it meets their own needs and consult an appropriately licensed financial adviser. The information contained in these materials have been prepared in good faith. However, no warranty (express or implied) is made as to the accuracy, completeness or reliability of any statements, estimates or opinions or other information contained in these materials (any of which may change without notice) and to the maximum extent permitted by law, the Disclosers disclaim all liability and responsibility (including, without limitation, any liability arising from fault or negligence on the part of any or all of the Disclosers) for any direct or indirect loss or damage which may be suffered by any recipient through relying on anything contained in or omitted from these materials. A copy of the relevant Financial Services Guide can be found on AFIC's website: www.afi.com.au