

# LAVERTON GOLD PROJECT - DRILLING AND MAGNETIC SURVEY COMPLETED

## HIGHLIGHTS

- **Drilling Program Completed**
  - A total of 48 air-core drillholes were completed, covering 2,874 metres.
  - Drilling focused on two target areas identified through historical anomalous intercepts and 2024 soil geochemical data.
  - Assay results are currently pending.
- **Geological Insights**
  - Gold mineralisation at Target Areas 1 and 2 is linked to a de-magnetised Banded Iron Formation (BIF) unit.
  - This BIF is interpreted as the southern strike extension of the Gladiator Gold Deposits' host unit.
- **Magnetic Survey**
  - A detailed UAV (drone) magnetic survey was completed over three specific zones.
  - The survey revealed previously unrecognised structural features, enhancing geological understanding of the area.
- **Next Steps**
  - Upon receipt and interpretation of assay results, additional drilling is planned across the Laverton tenement package.

## Rincon Technical Director, Michael Griffiths commented:

*"The Laverton Project has consistently drawn strong interest due to the abundance of historic mines in the region, yet it remains surprisingly underexplored using modern techniques. Much of the earlier exploration, particularly in the 1980s, relied on shallow vacuum drilling. In contrast, our current program has aimed to drill deeper, guided by robust geophysical data and recent soil geochemistry.*

*An added advantage has been the detailed drone-based magnetic survey, which delivered high-resolution structural insights that have directly informed our drilling strategy.*

*Mr. Griffiths commented further:*

*"The UAV magnetic survey was highly successful, identifying zones that previously exhibited subdued magnetic responses. We plan to conduct additional targeted surveys once the newly acquired data has been fully processed and interpreted."*

Rincon Resources Limited (Rincon or the Company) is pleased to provide an exploration update of the companies Laverton Gold Project situated 4km west of the Laverton townsite in Western Australia (Figure 1).

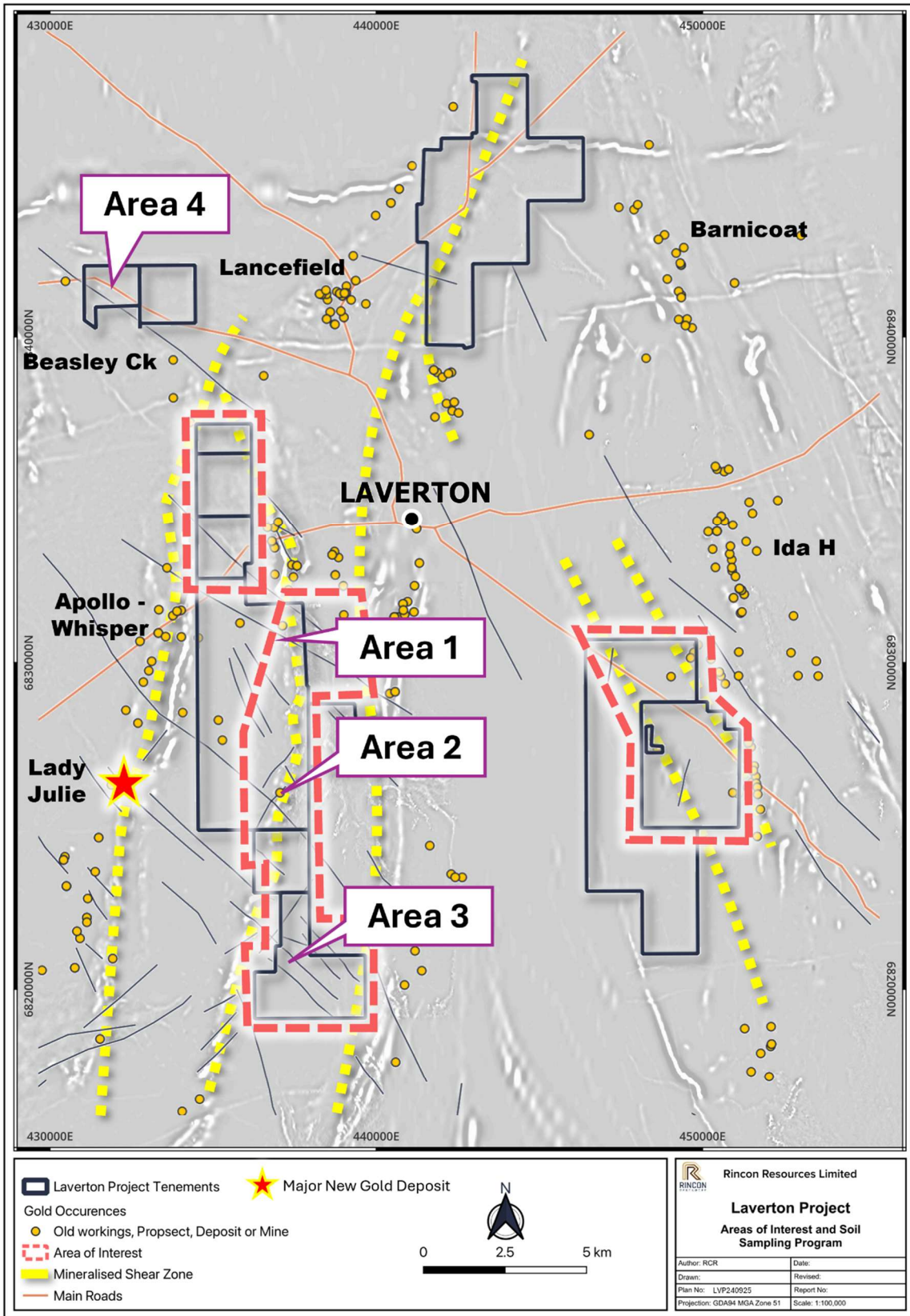


Figure 1 – Active Areas and anomalous trends at the Laverton Gold Project.

### Air-Core Drilling Programme

A 48 hole, 2,874m air-core (AC) drill programme at Area's 1 and 2 has been completed at the Laverton Gold Project that aimed to define the potential of gold mineralisation, intersected in historical drilling and during the 2024 soil sampling program completed by Rincon (Figure 1).

For personal use only

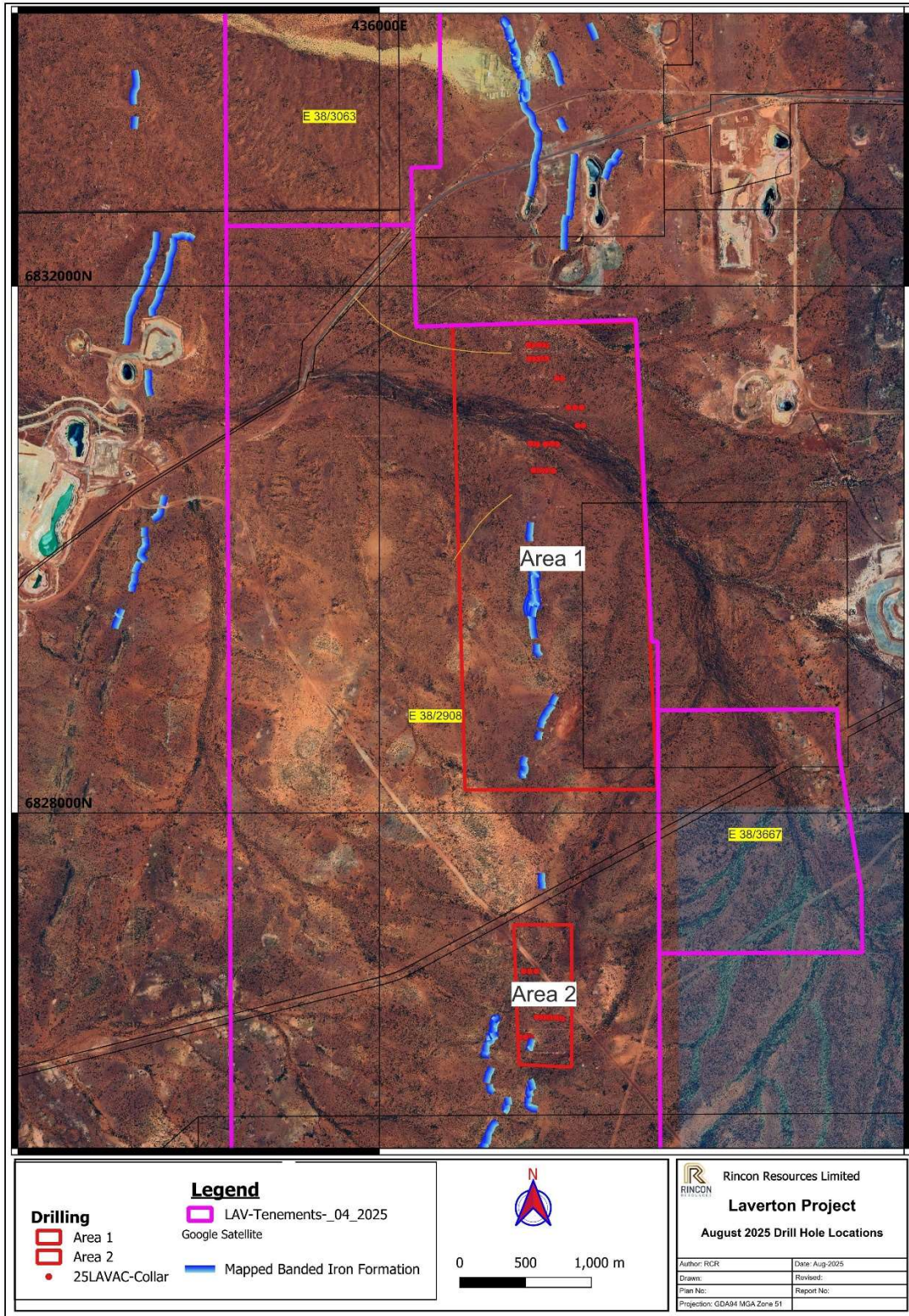


Figure 2 – Drill hole location Plan

### Drone (UAV) Magnetic Survey

A Drone UAV magnetic survey totally of 400-line km of was completed at Area’s 1, 3 and 4 (Figure 1) at 25m line spacings by a Scintrex CS-VL Cesium vapour magnetometer. Further details of the survey can be found in Appendix 2 attached.

The geophysical data presents preliminary results that will now be integrated into the regional magnetic data for added detailed interpretation.

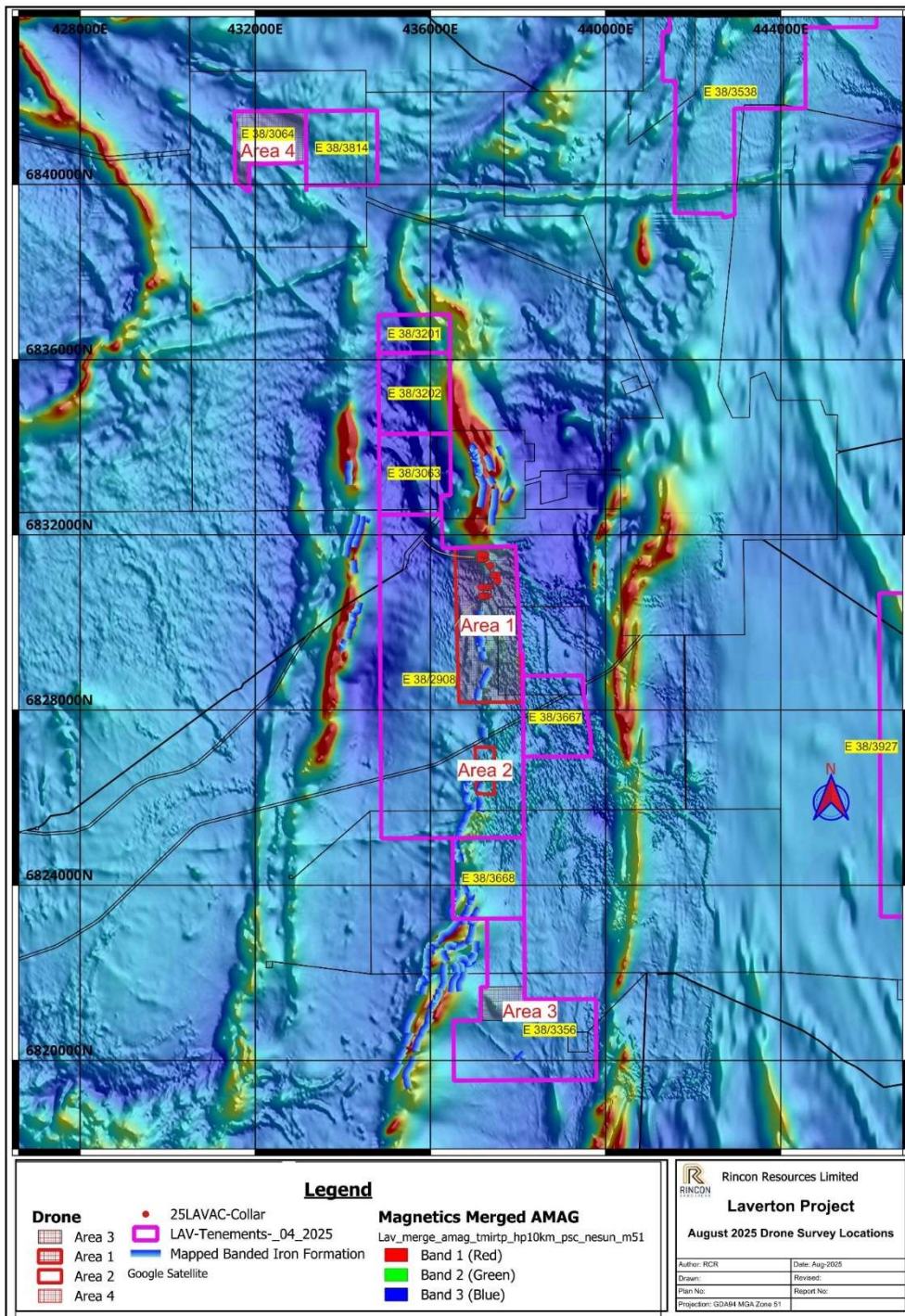


Figure 3 – Detailed UAV Magnetic Geophysics

### **Area 1 – Air-core and Drone UAV Magnetics**

At Area 1, a total of 32 air-core (AC) drillholes (25LVAC001–027 and 25LVAC044–048) were completed. These holes were designed to follow up on a gold trend extending over 800 metres of strike, defined by historical RAB and AC drilling that returned best-in-hole gold values of  $\geq 0.10$  g/t Au.

This anomalous gold trend is associated with the interpreted southern extension of a Banded Iron Formation (BIF) sequence, which is also linked to the Gladiator Gold Deposits located north of the Laverton Gold Project.

Drilling encountered a range of lithologies, including BIF, felsic volcanoclastics, meta-sediments, and mafic rocks. A recent drone-based magnetic survey has confirmed the presence of the BIF and revealed new structural features. These insights will be incorporated into the broader geological model once assay results are received.



**Figure 4 - Laverton - Area 2: drill site**

### **Area 2 - Air-core**

A total of 16 air-core (AC) drillholes (21LAC038–070) were completed to test several historical RAB gold anomalies, defined by best-in-hole values of  $\geq 0.1$  g/t Au, across a 250-metre strike length. This trend extends southward from Area 1 and covers the interpreted continuation of the

Banded Iron Formation (BIF) sequence associated with the Gladiator Deposits, located north of the project tenement boundary.

The drilling was designed to better delineate historical RAB and AC anomalism within hilly terrain featuring outcrop and sub-crop, situated in the southern portion of the project area.

### **Area 3 - Drone UAV Magnetics**

This area is structurally complex and undercover. The magnetic survey has provided valuable detailed data to the area, earmarked for the next drill program. Further processing and integration with existing regional geophysics and geochemical data will provide the best locations for further drilling.

### **Area 4- Drone UAV Magnetics**

Area 4 is located 12km north of Laverton on E38/3046. This small block has had limited detailed work, and the Drone UAV Magnetic Survey covering this area has provided valuable detailed data in preparation for drilling. Further processing and integration of this new data with existing regional geophysics and geochemical data, will assist in drill hole targeting.

### **Next Steps**

- Receipt, compilation and interpretation of drill hole assays;
- Re-assess priority drill targets for Heritage Surveys where required; and
- Implement the 2025 Stage 2 drill program.

**Authorised by the Board of Rincon Resources Limited.**

For more information visit [www.rinconresources.com.au](http://www.rinconresources.com.au) or contact:

#### **Company:**

Office: Tel: +61 (8) 6555 2950

#### **Michael Griffiths - Director**

Email: [mike.griffiths@rinconresources.com.au](mailto:mike.griffiths@rinconresources.com.au)

#### **David Lenigas - Chairman**

Email: [davidlenigas@gmail.com](mailto:davidlenigas@gmail.com)

## About Rincon:

Rincon has 100% interest in three exploration assets in Western Australia that are highly prospective for copper and gold. These are the South Telfer Project, West Arunta Project, and the Laverton Project.

Each asset has previously been subject to historical exploration which has identified prospective mineral systems that warrant further exploration. The Company's aim is to create value for its shareholders by advancing its assets through the application of technically sound, methodical, and systematic exploration programs to test, discover, and delineate economic resources for mining.

### View from Area 1 – looking west



## Competent Person Statements

### Mr Michael Griffiths

The information in this report that relates to Exploration Results is based on information compiled by Mr Michael Griffiths a Competent Person who is a Fellow of the Australasian Institute of Mining and Metallurgy. Mr. Griffiths is a Director of the Company. Mr. Griffiths has sufficient experience that is relevant to the style of mineralisation and type of deposit under consideration and to the activity being undertaken to qualify as a Competent Person as defined in the 2012 Edition of the "Australasian Code for Reporting of Exploration Results, Mineral Resources and Ore Reserves". Mr. Griffiths consents to the inclusion in this report of the matters based on his information in the form and context in which it appears.

The Company confirms that it is not aware of any new information or data that materially affects the information included in the original market announcements in relation to the Exploration Results. The Company confirms that the form and context in which the competent persons findings are presented have not been materially modified from the original announcements.

## Forward-Looking Statements

This announcement may contain certain forward-looking statements and opinions. Forward-looking statements, including projections, forecasts and estimates, are provided as a general guide only and should not be relied on as an indication or guarantee of future performance and involve known and unknown risks, uncertainties, assumptions, contingencies and other important factors, many of which are outside the control of the Company and which are subject to change without notice and could cause the actual results, performance or achievements of the Company to be materially different from the future results, performance or achievements expressed or implied by such statements. Past performance is not necessarily a guide to future performance

and no representation or warranty is made as to the likelihood of achievement or reasonableness of any forward-looking statements or other forecast. Nothing contained in this announcement, nor any information made available to you is, or and shall be relied upon as, a promise, representation, warranty or guarantee as to the past, present or the future performance of Rincon.

For personal use only

**Table 1 – Summary of New Air-core Drill Hole Locations**

Area	HoleID	Easting	Northing	Elev (STRM)	Grid	Azi	Dip	Actual EOH
Area 1	25LVAC001	437547.6	6830941	449	MGA2020	270	-60	111.00
Area 1	25LVAC002	437505.9	6830942	450	MGA2020	270	-60	112.00
Area 1	25LVAC003	437536.7	6831078	450	MGA2020	270	-60	99.00
Area 1	25LVAC004	437487.4	6831077	450	MGA2020	270	-60	99.00
Area 1	25LVAC005	437436.4	6831078	449	MGA2020	270	-60	126.00
Area 1	25LVAC006	437388.4	6831299	450	MGA2020	270	-60	76.00
Area 1	25LVAC007	437347.8	6831300	450	MGA2020	270	-60	88.00
Area 1	25LVAC008	437269.2	6831451	450	MGA2020	270	-60	81.00
Area 1	25LVAC009	437230.9	6831450	450	MGA2020	270	-60	51.00
Area 1	25LVAC010	437203.9	6831446	450	MGA2020	270	-60	67.00
Area 1	25LVAC011	437168.1	6831447	449	MGA2020	270	-60	63.00
Area 1	25LVAC012	437137.3	6831448	450	MGA2020	270	-60	90.00
Area 1	25LVAC013	437269	6831548	449	MGA2020	270	-60	46.00
Area 1	25LVAC014	437246.3	6831551	448	MGA2020	270	-60	75.00
Area 1	25LVAC015	437212.9	6831553	449	MGA2020	270	-60	82.00
Area 1	25LVAC016	437166.6	6831548	449	MGA2020	270	-60	84.00
Area 1	25LVAC017	437130.4	6831554	449	MGA2020	270	-60	89.00
Area 1	25LVAC018	437349.4	6830799	450	MGA2020	270	-60	78.00
Area 1	25LVAC019	437311.8	6830804	450	MGA2020	270	-60	64.00
Area 1	25LVAC020	437272.9	6830800	450	MGA2020	270	-60	33.00
Area 1	25LVAC021	437260.1	6830799	450	MGA2020	270	-60	114.00
Area 1	25LVAC022	437199	6830799	450	MGA2020	270	-60	51.00
Area 1	25LVAC023	437321.2	6830596	452	MGA2020	270	-60	69.00
Area 1	25LVAC024	437282.9	6830600	452	MGA2020	270	-60	39.00
Area 1	25LVAC025	437262.7	6830598	452	MGA2020	270	-60	48.00
Area 1	25LVAC026	437237.9	6830599	452	MGA2020	270	-60	39.00
Area 1	25LVAC027	437217	6830601	452	MGA2020	270	-60	32.00
Area 2	25LVAC028	437069.9	6826299	488	MGA2020	270	-60	12.00
Area 2	25LVAC029	437148	6826298	491	MGA2020	270	-60	32.00
Area 2	25LVAC030	437134.2	6826298	491	MGA2020	270	-60	18.00
Area 2	25LVAC031	437125.4	6826298	491	MGA2020	270	-60	19.00
Area 2	25LVAC032	437109.3	6826297	490	MGA2020	270	-60	21.00
Area 2	25LVAC033	437297.6	6826446	488	MGA2020	270	-60	57.00
Area 2	25LVAC034	437269.1	6826448	489	MGA2020	270	-60	45.00
Area 2	25LVAC035	437245.3	6826446	490	MGA2020	270	-60	42.00
Area 2	25LVAC036	437218.7	6826449	491	MGA2020	270	-60	48.00
Area 2	25LVAC037	437193.6	6826450	492	MGA2020	270	-60	21.00
Area 2	25LVAC038	437388.6	6826437	486	MGA2020	270	-60	56.00
Area 2	25LVAC039	437361.1	6826444	487	MGA2020	270	-60	32.00
Area 2	25LVAC040	437342.8	6826446	487	MGA2020	270	-60	81.00
Area 2	25LVAC041	437192.2	6826798	486	MGA2020	270	-60	105.00
Area 2	25LVAC042	437141.8	6826797	486	MGA2020	270	-60	78.00
Area 2	25LVAC043	437096.4	6826798	486	MGA2020	270	-60	42.00
Area 1	25LVAC044	437172.2	6830802	451	MGA2020	270	-60	43.00
Area 1	25LVAC045	437146.6	6830805	451	MGA2020	270	-60	19.00
Area 1	25LVAC046	437200.9	6830600	452	MGA2020	270	-60	30.00
Area 1	25LVAC047	437184.6	6830601	452	MGA2020	270	-60	25.00
Area 1	25LVAC048	437169.7	6830601	452	MGA2020	270	-60	42.00

## Appendix 1 JORC Code, 2012 Edition – Table 1 – Laverton Air-Core Drilling

### Section 1 - Sampling Techniques and Data

Criteria	JORC Code explanation	Commentary
<b>Sampling techniques</b>	<i>Nature and quality of sampling (e.g., cut channels, random chips, or specific specialised industry standard measurement tools appropriate to the minerals under investigation, such as down hole gamma sondes, or handheld XRF instruments, etc.). These examples should not be taken as limiting the broad meaning of sampling.</i>	The sampling has been carried out using air-core drilling (AC). A total of 48 holes (25LVA001-048) were drilled in the reported program for a total of 2,874m of AC at depths ranging from of 12 to 126m. Holes were drilled at - 60 degrees at approximately to 270°. Sample quality was high with only minimal sample loss around the annulus. Some samples were wet as noted but overall dry sample was produced to the depths drilled
	<i>Include reference to measures taken to ensure sample representation and the appropriate calibration of any measurement tools or systems used.</i>	The drill holes were located by handheld GPS. Sampling was carried out under Company protocols and QAQC procedures as per current industry practice. See further details below.
	<i>Aspects of the determination of mineralisation that are Material to the Public Report.  In cases where 'industry standard' work has been done this would be relatively simple (e.g. 'reverse circulation drilling was used to obtain 1 m samples from which 3 kg was pulverised to produce a 30 g charge for fire assay'). In other cases more explanation may be required, such as where there is coarse gold that has inherent sampling problems. Unusual commodities or mineralisation types (e.g. submarine nodules) may warrant disclosure of detailed information.</i>	AC holes were drilled with a 3.5-inch face-sampling bit, 1m samples collected through a cyclone into buckets and placed on the ground as 1m samples, generally in rows of 10. Samples are collected with a scoop to generate 3m composite samples. The 2-3 kg composite samples were dispatched Intertek Kalgoorlie, WA.
<b>Drilling techniques</b>	<i>Drill type (e.g. core, reverse circulation, open-hole hammer, rotary air blast, auger, Bangka, sonic, etc) and details (e.g. core diameter, triple or standard tube, depth of diamond tails, face-sampling bit or other type, whether core is oriented and if so, by what method, etc).</i>	Inclined air-core drilling was completed by Harnec based in Perth.
<b>Drill sample recovery</b>	<i>Method of recording and assessing core and chip sample recoveries and results assessed.</i>	The majority of samples were dry. Ground water was encountered in some holes. Sample recoveries were visually estimated, and any low recoveries recorded in the drill logs. Sample quality was noted on the drill logs.
	<i>Measures taken to maximise sample recovery and ensure representative nature of the samples.</i>	Drill cyclone and sample buckets were cleaned between rod changes and after each hole to minimize contamination.
	<i>Whether a relationship exists between sample recovery and grade and whether sample bias may have occurred due to preferential loss/gain of fine/coarse material.</i>	Awaiting assay results.
<b>Logging</b>	<i>Whether core and chip samples have been geologically and geotechnically logged to a level of detail to support appropriate Mineral Resource estimation, mining studies and metallurgical studies.</i>	All holes were inspected by APEC Geoscience Contract Geologists, with detailed logging using the Companies logging scheme.
	<i>Whether logging is qualitative or quantitative in nature. Core (or costean, channel, etc) photography.</i>	Logging of AC samples records lithology, mineralogy, mineralisation, weathering, colour and other features of the samples. All samples are wet-sieved and EOH samples stored in chip trays. These trays were stored off site for future reference. All sample piles were photographed and stored on the company's database.
	<i>The total length and percentage of the relevant intersections logged.</i>	Awaiting assay results
<b>Sub-sampling techniques and sample preparation</b>	<i>If core, whether cut or sawn and whether quarter, half or all core taken.</i>	NA
	<i>If non-core, whether riffled, tube sampled, rotary split, etc and whether sampled wet or dry.</i>	AC 3m composite samples, were collected using a scoop. Samples are recorded as dry, wet or damp. Results from the

Criteria	JORC Code explanation	Commentary
		composite samples will be used to identify which single meter samples will be submitted to laboratory. Composite samples are not used in resources calculations.
	<i>For all sample types, the nature, quality and appropriateness of the sample preparation technique.</i>	Awaiting assay results
	<i>Quality control procedures adopted for all sub-sampling stages to maximise representation of samples.</i>	AC samples were collected at 3 m intervals using a scoop. Certified Reference Materials (CRM's) and/or blanks were included in the submitted samples.
	<i>Measures taken to ensure that the sampling is representative of the in situ material collected, including for instance results for field duplicate/second-half sampling.</i>	Compositing of samples involves collection of representative scoops from within the single sample meter pile. Samples weigh 2-3kg prior to pulverization.
	<i>Whether sample sizes are appropriate to the grain size of the material being sampled.</i>	Sample sizes are considered appropriate to give an indication of mineralisation given the particle sizes and the practical requirement to maintain manageable sample weights.
<b>Quality of assay data and laboratory tests</b>	<i>The nature, quality and appropriateness of the assaying and laboratory procedures used and whether the technique is considered partial or total.</i>	Awaiting assay results.
	<i>For geophysical tools, spectrometers, handheld XRF instruments, etc. the parameters used in determining the analysis including instrument make and model, reading times, calibrations factors applied and their derivation, etc.</i>	No geophysical tools were used in this program.
	<i>Nature of quality control procedures adopted (e.g. standards, blanks, duplicates, external laboratory checks) and whether acceptable levels of accuracy (i.e. lack of bias) and precision have been established.</i>	For 3m composite AC sampling, Field Standards (Certified Reference Materials) and Blanks are inserted regularly within the sample sequence. At the Assay Laboratory additional Repeats, Lab Standards, Checks and Blanks are analysed concurrently with the field samples. Results of the field and Lab QAQC samples were checked on assay receipt. All assays met QAQC protocols, showing no levels of contamination or sample bias. Analysis of field duplicate assay data suggests expected levels of sampling precision, with less than 10% pair difference.
<b>Verification of sampling and assaying</b>	<i>The verification of significant intersections by either independent or alternative company personnel.</i>	Results to be checked on receipt.
	<i>The use of twinned holes.</i>	Twin holes were not employed during this part of the program.
	<i>Documentation of primary data, data entry procedures, data verification, data storage (physical and electronic) protocols.</i>	All Data will be entered electronically at the Perth office on receipt.
	<i>Discuss any adjustment to assay data.</i>	Awaiting assay results.
<b>Location of data points</b>	<i>Accuracy and quality of surveys used to locate drill holes (collar and down-hole surveys), trenches, mine workings and other locations used in Mineral Resource estimation.</i>	AC locations were determined by hand-held GPS. The drill rig mast is set up using a clinometer and rig is orientated using handheld compass.
	<i>Specification of the grid system used.</i>	Grid projection is MGA2020, Zone 51.
	<i>Quality and adequacy of topographic control.</i>	Relative Levels are allocated to the drill hole collars using current Digital Terrain Model's for the area. The accuracy of the DTM is estimated to be better than 5m.
<b>Data spacing and distribution</b>	<i>Data spacing for reporting of Exploration Results.</i>	AC drilling was designed to intersect oxide mineralisation within the known mineralized structures interpreted mineralised shear zones within the tenement. One sample was collected for every 3 metres (maximum) drilled and submitted for assay.
	<i>Whether the data spacing and distribution is sufficient to establish the degree of geological and grade continuity appropriate for the Mineral Resource and Ore Reserve estimation procedure(s) and classifications applied.</i>	The drilling is part of a targeted first pass wide spaced regional exploration programme and is not suitable for Resource estimation purposes.
	<i>Whether sample compositing has been applied.</i>	Not applicable
<b>Orientation of data in relation to geological structure</b>	<i>Whether the orientation of sampling achieves unbiased sampling of possible structures and the extent to which this is known, considering the deposit type.</i>	The orientation of the drill hole (azimuth) is approximately perpendicular to the strike of the targeted mineralisation.
	<i>If the relationship between the drilling orientation and the orientation of key mineralised structures is considered to have introduced a sampling bias, this should be assessed and reported if material.</i>	The drill orientation is estimated to be approximately perpendicular to the main mineralised trend. It is unclear at present whether cross structures are mineralised, however it is considered unlikely that any sampling bias has been introduced.
<b>Sample security</b>	<i>The measures taken to ensure sample security.</i>	Composite samples were submitted in pre -numbered plastic bags (five calico bags per single plastic bag), sealed and transported to the Intertek Laboratory in Kalgoorlie for assaying.
<b>Audits or reviews</b>	<i>The results of any audits or reviews of sampling techniques and data.</i>	Results pending

## Section 2 - Reporting of Exploration Results

(Criteria listed in the preceding section also apply to this section.)

Criteria	JORC Code explanation	Commentary
<b>Mineral tenement and land tenure status</b>	Type, reference name/number, location and ownership including agreements or material issues with third parties such as joint ventures, partnerships, overriding royalties, native title interests, historical sites, wilderness or national park and environmental settings.	The AC drilling occurred within tenements E37/2908 which is held 100% by Holding Tenements Pty Ltd, a 100% owned subsidiary of Rincon Resources Ltd. The Project is located 5km SW of Laverton in the Eastern Goldfields of Western Australia
	The security of the tenure held at the time of reporting along with any known impediments to obtaining a licence to operate in the area.	The tenements subject to this report are in good standing with the Western Australian Department of Mines & Petroleum.
<b>Exploration done by other parties</b>	Acknowledgment and appraisal of exploration by other parties.	The majority of past exploration work within the project area including drilling, surface sampling; geophysical surveys and geological mapping has been largely completed by Metex Resources Limited and Barrack Gold of Australia Limited. The reports are available on the West Australian Mines Department WAMEX open file library. Classic Minerals Ltd completed limited exploration in 2009. Rincon completed soil sampling in 2019 & 2024 within E38/2908. Where relevant, assay data from this earlier exploration has been incorporated into Company databases.
<b>Geology</b>	Deposit type, geological setting and style of mineralisation.	The Project is prospective for Archaean-aged structurally controlled mesothermal gold deposits.
<b>Drill hole Information</b>	<p>A summary of all information material to the understanding of the exploration results including a tabulation of the following information for all Material drill holes:</p> <ul style="list-style-type: none"> <li>easting and northing of the drill hole collar</li> <li>elevation or RL (Reduced Level – elevation above sea level in metres) of the drill hole collar</li> <li>dip and azimuth of the hole</li> <li>down hole length and interception depth</li> <li>hole length.</li> </ul> <p>If the exclusion of this information is justified on the basis that the information is not Material and this exclusion does not detract from the understanding of the report, the Competent Person should clearly explain why this is the case.</p>	Refer to table in the body of text.
<b>Data aggregation methods</b>	In reporting Exploration Results, weighting averaging techniques, maximum and/or minimum grade truncations (e.g. cutting of high grades) and cut-off grades are usually Material and should be stated.	Awaiting assay results.
	Where aggregate intercepts incorporate short lengths of high-grade results and longer lengths of low grade results, the procedure used for such aggregation should be stated and some typical examples of such aggregations should be shown in detail.	Awaiting assay results.
	The assumptions used for any reporting of metal equivalent values should be clearly stated.	Awaiting assay results.
<b>Relationship between mineralisation widths and intercept lengths</b>	<p>These relationships are particularly important in the reporting of Exploration Results.</p> <p>If the geometry of the mineralisation with respect to the drill hole angle is known, its nature should be reported.</p> <p>If it is not known and only the down hole lengths are reported, there should be a clear statement to this effect (e.g. 'down hole length, true width not known').</p>	Awaiting assay results.
<b>Diagrams</b>	Appropriate maps and sections (with scales) and tabulations of intercepts should be included for any significant discovery being reported. These should include, but not be limited to a plan view of drill hole collar locations and appropriate sectional views.	Awaiting assay results.
<b>Balanced reporting</b>	Where comprehensive reporting of all Exploration Results is not practicable, representative reporting of both low and high grades and/or widths should be practiced to avoid misleading reporting of Exploration Results.	Awaiting assay results
<b>Other substantive exploration data</b>	Other exploration data, if meaningful and material, should be reported including (but not limited to): geological observations; geophysical survey results;	Drone (UAV) magnetic Surveys were completed over Area 1, corresponding with drilling and 2 other Areas were also surveyed. See maps and description in the body of the release.

Criteria	JORC Code explanation	Commentary
	<p><i>geochemical survey results; bulk samples – size and method of treatment; metallurgical test results; bulk density, groundwater, geotechnical and rock characteristics; potential deleterious or contaminating substances.</i></p>	<p>The Drone survey was completed by Pegasus Airborne Systems using a PAS-HE survey aircraft this a Scintrex CS-VL Cesium vapour magnetometer producing raw TMI &amp; DTM data.</p>
<p><b>Further work</b></p>	<p><i>The nature and scale of planned further work (e.g. tests for lateral extensions or depth extensions or large-scale step-out drilling).</i></p> <p><i>Diagrams clearly highlighting the areas of possible extensions, including the main geological interpretations and future drilling areas, provided this information is not commercially sensitive.</i></p>	<p>Further drill testing is planned, as described in this announcement. Location of drilling is still to be determined.</p>

For personal use only