

**TALIRESOURCES**

**UNLOCKING THE  
WEST ARUNTA**

**August 2025 | ASX: TR2**

personal use only

# Important Notices and Disclaimer

**Nature of Document:** This presentation has been prepared and issued by Tali Resources Ltd (Tali, the Company) to provide general information about the Company. The information in this document is in summary form and should not be relied upon as a complete and accurate representation of any matters that a reader should consider in evaluating the Company. While management has taken every effort to ensure the accuracy of the material in this presentation, the Company and its advisers have not verified the accuracy or completeness of the material contained in this presentation.

**Forward-Looking Statements:** This presentation contains forward-looking information about the Company and its operations. In certain cases, forward-looking information may be identified by such terms as "anticipates", "believes", "should", "could", "estimates", "target", "likely", "plan", "expects", "may", "intend", "shall", "will", or "would". These statements are based on information currently available to the Company and the Company provides no assurance that actual results will meet management's expectations. Forward-looking statements are subject to risk factors associated with the Company's business, many of which are beyond the control of the Company. It is believed that the expectations reflected in these statements are reasonable but they may be affected by a variety of variables and changes in underlying assumptions which could cause actual results or trends to differ materially from those expressed or implied in such statements. There can be no assurance that actual outcomes will not differ materially from these statements.

**Disclaimer:** No representation or warranty, express or implied, is made by the Company that the material contained in this presentation will be achieved or proved correct. Except for statutory liability which cannot be excluded, each of the Company, its directors, officers, employees, advisors and agents expressly disclaims any responsibility for the accuracy, fairness, sufficiency or completeness of the material contained in this presentation and excludes all liability whatsoever (including in negligence) for any loss or damage which may be suffered by any person as a consequence of any information in this presentation or any effort or omission therefrom. The Company will not update or keep current the information contained in this presentation or to correct any inaccuracy or omission which may become apparent, or to furnish any person with any further information. Any opinions expressed in the presentation are subject to change without notice.

**Not an offer:** This presentation and its contents are not an invitation, offer, solicitation or recommendation with respect to the purchase or sale of any securities in the Company in any jurisdiction and must not be distributed, transmitted, or viewed by any person in any jurisdiction where the distribution, transmission or viewing of this document would be unlawful under the securities or other laws of that or any other jurisdiction. This presentation is not a prospectus or any other offering document under Australian law (and will not be lodged with the Australian Securities and Investments Commission) or any other law.

**Not financial product advice:** Neither the Company nor any of its related bodies corporate is licensed to provide financial product advice in respect of the Company's securities or any other financial products. You should not act and refrain from acting in reliance on this presentation. Nothing contained in this presentation constitutes investment, legal, tax or other advice. This presentation does not take into account the individual investment objectives, financial situation and particular needs of Company shareholders. Before making a decision to invest in the Company at any time, you should conduct, with the assistance of your broker or other financial or professional adviser, your own investigation in light of your particular investment needs, objectives and financial circumstances and perform your own analysis of the Company before making any investment decision.

**Authorisation Statement:** This presentation is authorised for market release by Tali's Board of Directors.

**All currency amounts are in Australian dollars unless specified otherwise.**

# Investment Overview



- **ASX: TR2** – commenced trading on the ASX on 18 July 2025
- **Commodity focus** – copper, critical and precious metals
- **West Arunta region** – Australia’s most exciting new mineral province with a recent Tier-1 discovery
- **Significant land position** – over 4,000km<sup>2</sup> of tenure covering 200km of the Central Australian Suture and Lake Mackay Fault
- **Long-term pipeline** – significant suite of prospects ranging from concept to drill-ready stages
- **Drill testing key prospects in 2025** – drilling has commenced testing Lonar, Chilka, Maton B, Maton C and Gibson East
- **Track record** – established team with corporate acumen, operational expertise and local relationships in the West Arunta



# Corporate Snapshot

## BOARD OF DIRECTORS AND MANAGEMENT

**Mark Savich** | Non-Executive Chairman (BCom, GradDipMinExplGeoSc, CFA, CA, GAICD)

- +20 years experience in the resources sector
- Former CEO and current Non-Executive Director of Agrimin Limited

**Rhys Bradley** | Managing Director (BCom, GradDipMinExplGeoSc, CA)

- Experienced in company management, capital markets, minerals exploration, project feasibility and corporate governance
- WA1 Resources Ltd founding and current Non-Executive Director and former Agrimin Limited CFO & Co. Sec.

**Tom Lyons** | Non-Executive Director (BSc Geol, GAICD, MAIG)

- Over 10 years of project generation, exploration, permitting and development experience in the West Arunta
- WA1 Resources Ltd founding and current Executive Director

**Paul Parker** | Non-Executive Director (BSc (Hons), MSc, MAIG, MAusIMM)

- Geologist with +35 years exploration, resource and mining roles, with a focus on exploration and project evaluation
- Former WA1 Resources Ltd Director, Sandfire Resources Principal Technical Geologist and IGO Chief Geologist

**Briohny McManus** | Company Secretary (BCom, CA)

- Experienced in equity capital markets and ASX compliance and governance
- Agrimin Limited Co. Sec.

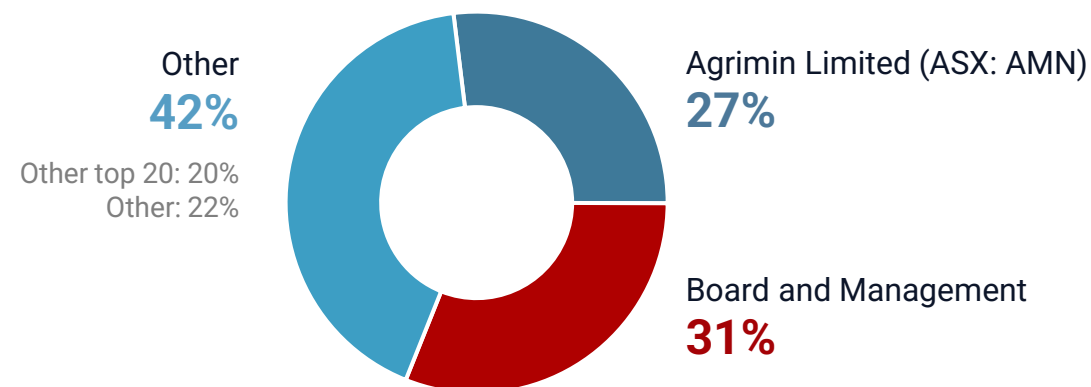
**Nick Miles** | Exploration Manager (B AppGeol, BSc (EnvSc), MAICD, MAIG, MAusIMM)

- Extensive West Arunta exploration, heritage, environmental and execution capability

## CAPITAL STRUCTURE

ASX Code	TR2
Share price (11 August 2025)	\$0.80
Shares on issue	117.5 m
Options <sup>1</sup>	6.35 m
<b>Market capitalisation (undiluted)</b>	<b>\$94 m</b>
<b>Cash<sup>2</sup></b>	<b>\$6.0 m</b>
<b>Debt</b>	<b>Nil</b>

## SHAREHOLDERS



# WEST ARUNTA PROJECT

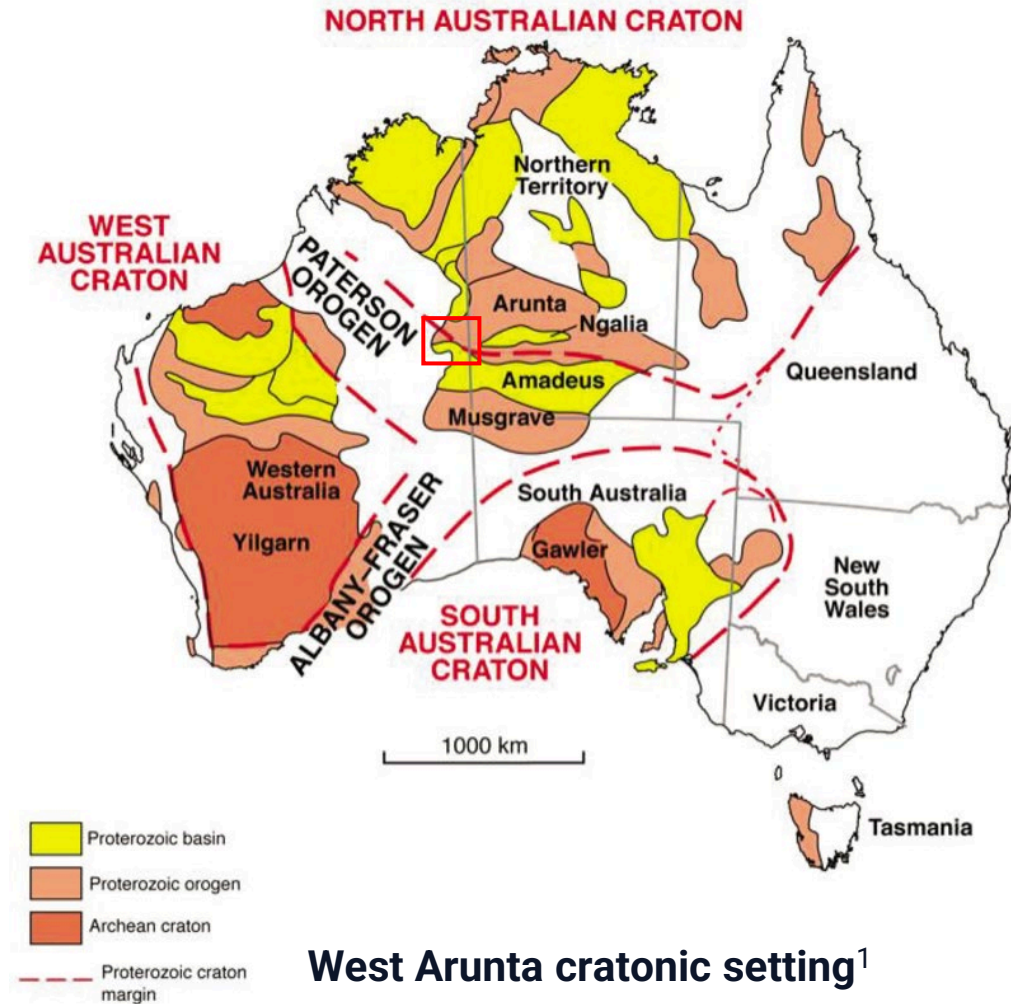
ersonal use only



# The West Arunta – Setting the Scene

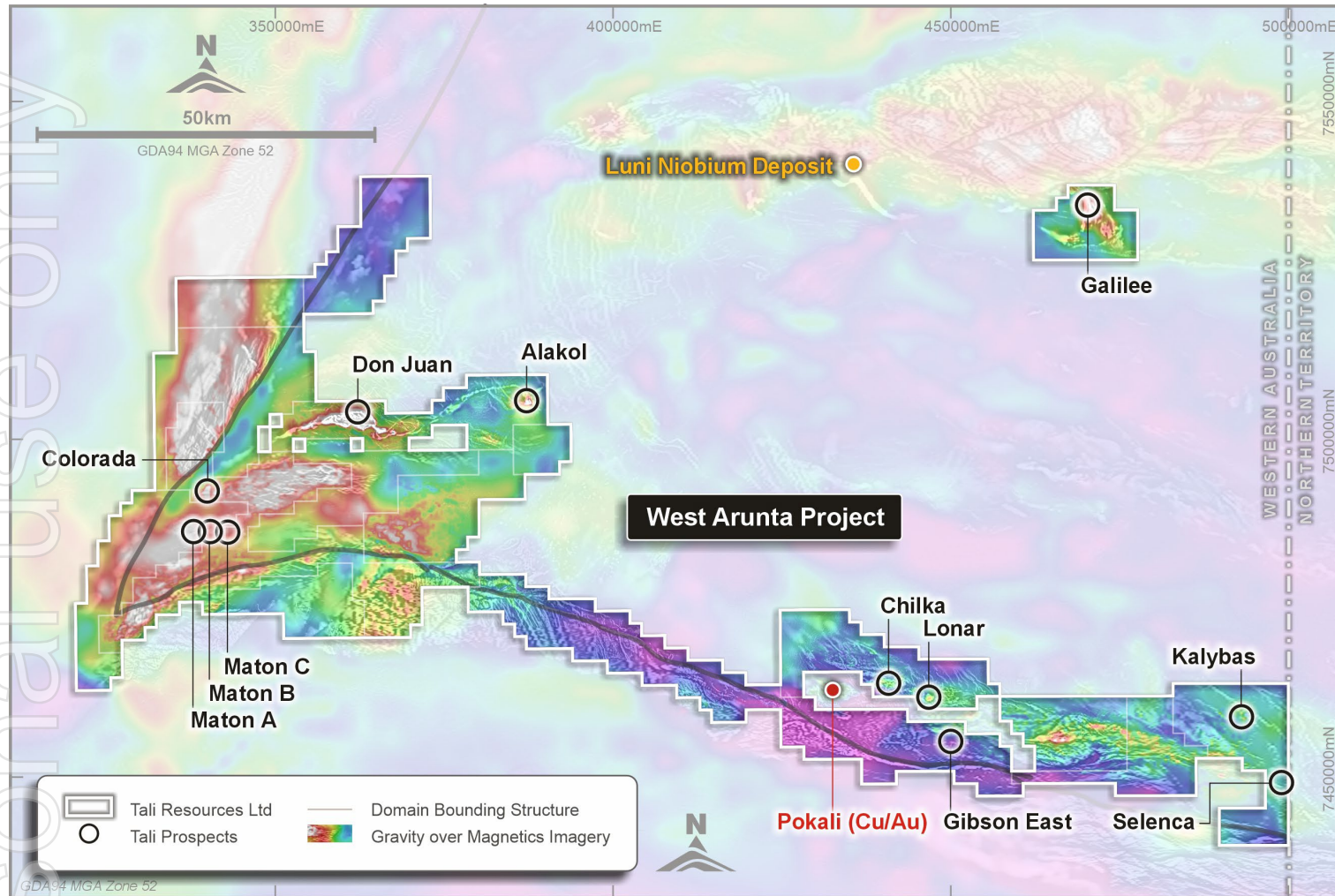
Highly prospective region with shallow cover that remains underexplored

- The Arunta Orogen has many similarities with other Australian Proterozoic belts but is comparatively under-explored
- Situated on a continental-scale triple junction, giving it a favourable geodynamic setting with the intersection of the transcrustal Lake Mackay Fault and the Central Australian Suture considered highly prospective
- Area is mainly covered by an extensive but thin veneer of transported sand and other cover making it the ideal search space for shallow covered targets
- Regional geology is considered prospective for many types of mineralisation, including:
  - Iron Oxide Copper-Gold (IOCG) – part of a Proterozoic terrane that shares many similarities to other Australian IOCG districts
  - Carbonatite-related critical minerals – prospectivity is demonstrated by the discovery of the Tier-1 Luni niobium deposit
  - Sediment-hosted copper – hosts overlapping Amadeus Basin sedimentary rocks that meet key criteria to host base metals deposits<sup>2</sup>
- Tali holds the largest West Arunta land position with over 4,000km<sup>2</sup> of tenure



# Project History

Significant generative work completed to provide compelling large-scale prospects



**West Arunta Project granted tenements and prospects**  
(filtered gravity over filtered magnetics)

- Tali has **built its ground holding** via tenement applications and acquisitions covering **key structural corridors**
- A farm-in and JV with Rio Tinto Exploration Pty Limited (**RTX**) operated from 2021 to 2024 with RTX funding exploration activities over five of the tenements (current package of 15 granted tenements)
- **Significant amount of work completed** including:
  - airborne magnetic, radiometric and elevation surveys
  - ground gravity surveys
  - airborne electromagnetic (**AEM**) surveys
  - 7,335m of RC drilling in 2022 and 2023
- Extensive suite of **large-scale prospects** that are **ready for drill testing** in 2025 and 2026

# AUGUST 2025 DRILLING PROGRAM

ersonal use only

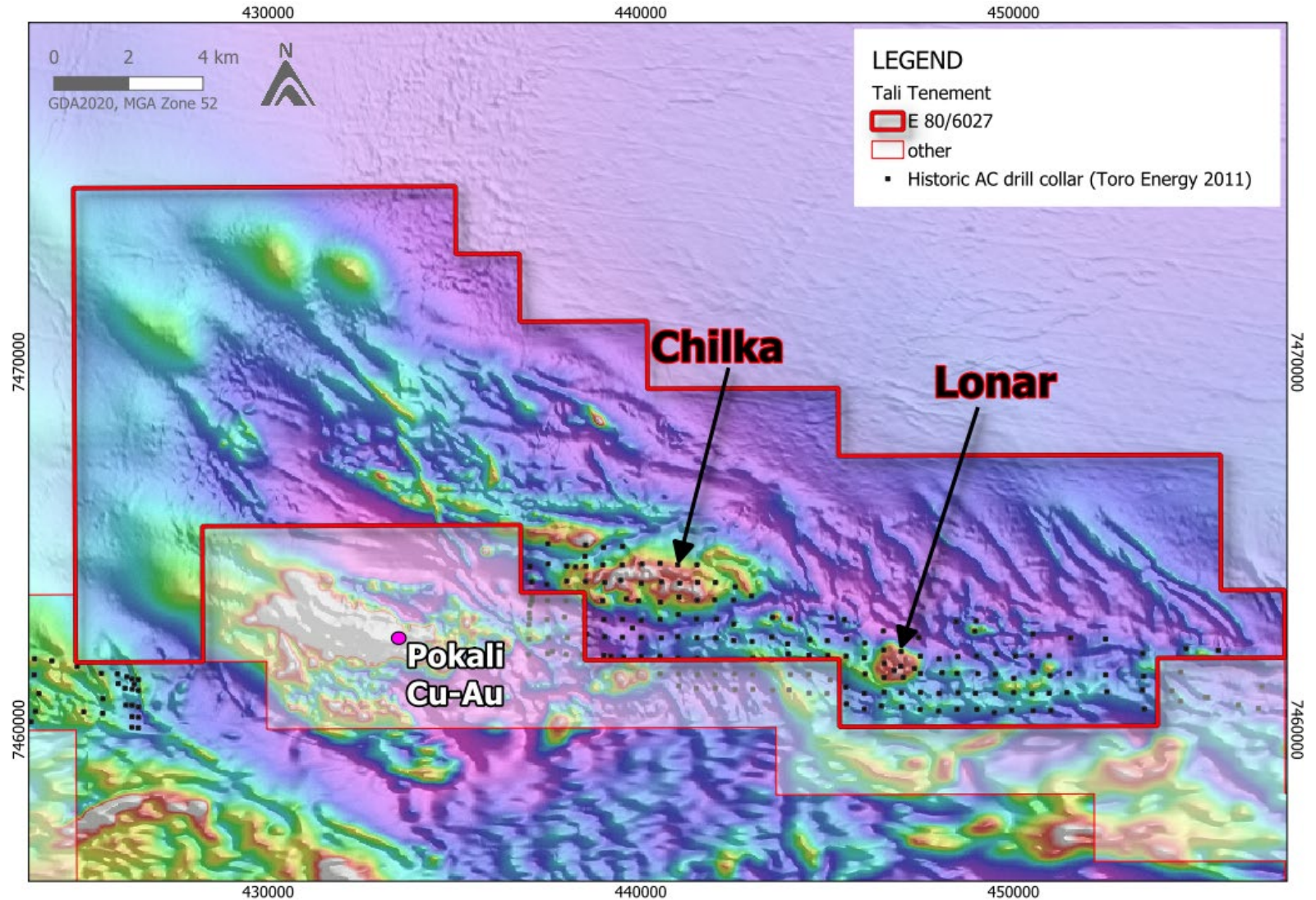


TALIREOURCES

# Chilka & Lonar Prospects

## Regionally significant prospects

- Two large-scale prospects with significant associated geophysical anomalism
- Shallow historical aircore drilling over these areas highlighted gold and base metal anomalies<sup>1</sup>
- Both prospects sit within 10km to the east of Pokali (not within Tali tenure), a large copper mineralised system
- Drilling intercepts at Pokali include 246m at 0.22% Cu, from hole PKC024<sup>2</sup>
- RTX retains a 0.25% NSR<sup>3</sup>

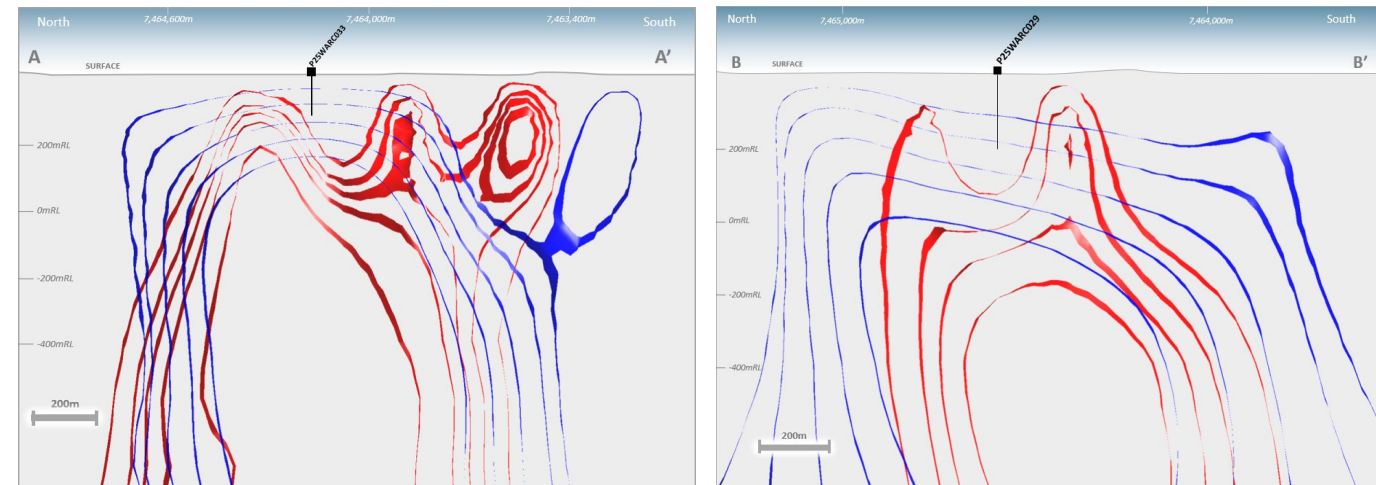
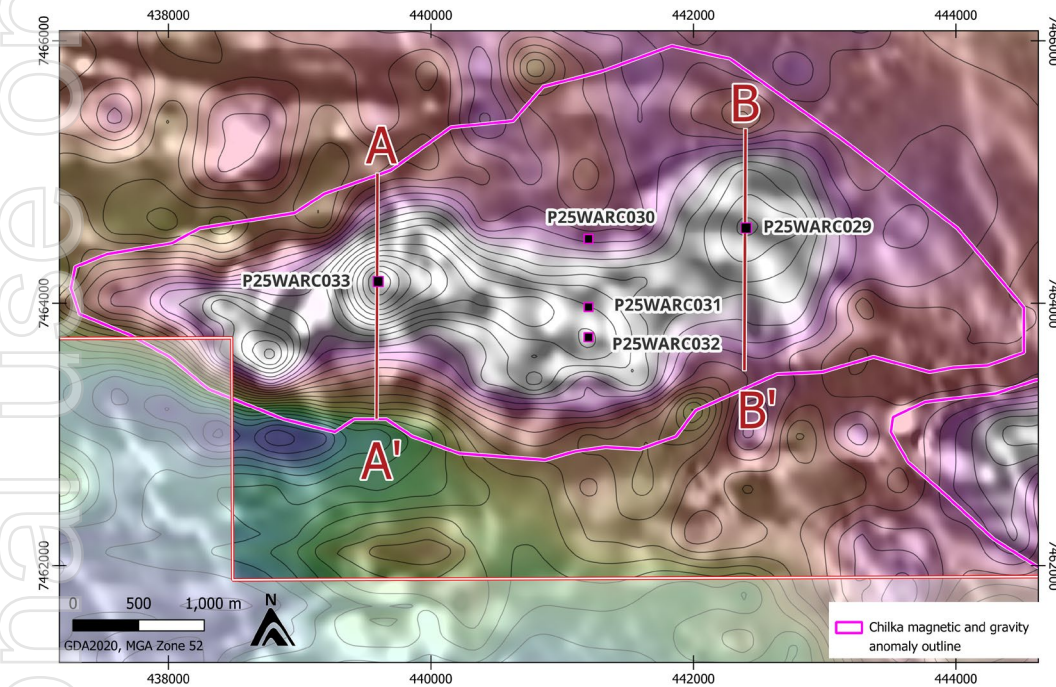


Lonar and Chilka magnetics

# Chilka Prospect

## 5.8km semi-coincident magnetic and gravity anomaly

- Large fault bound, semi-coincident, magnetic (+4,200nT) and gravity (+2.0mGal) feature high measuring ~5.8km east-west<sup>1</sup>
- Semi-coincident mid to late time AEM conductivity response with the magnetic and gravity anomalies



**Gravity and magnetic cross-section inversions A-A' (left) and B-B' (right)**

*Unconstrained inversion model results as iso-surface shells for select magnetic susceptibility (red shells) and gravity (blue shells) thresholds and planned drillholes*

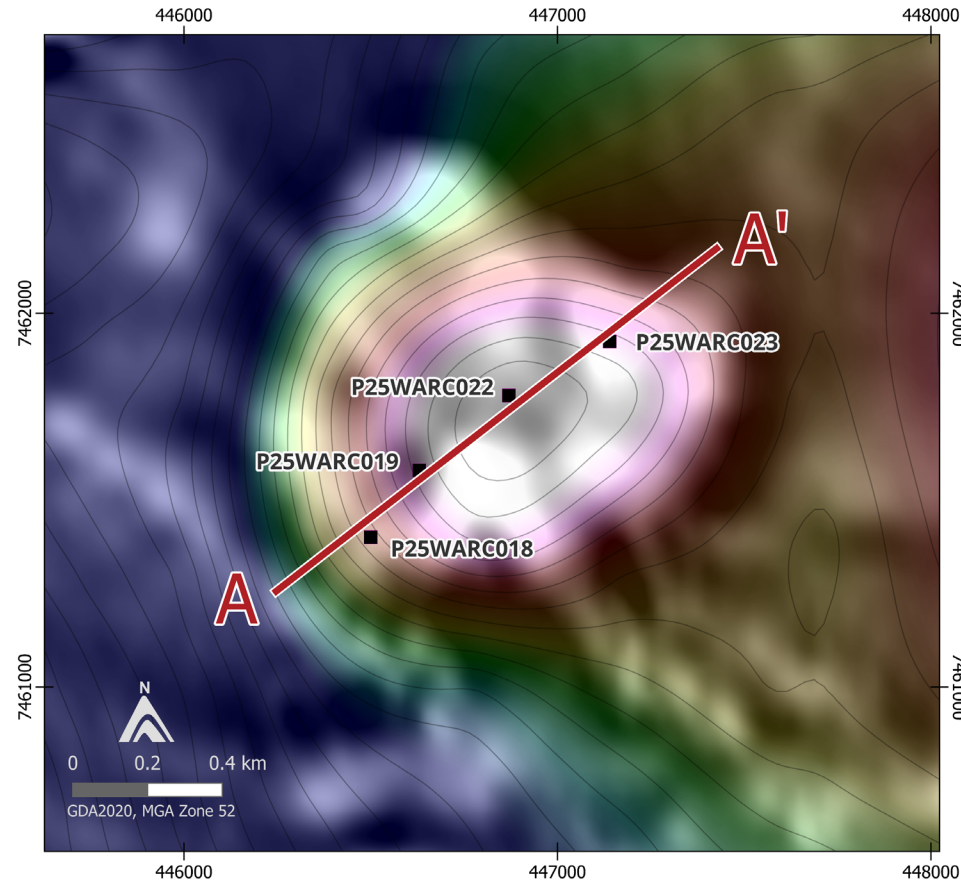
### Gravity and magnetic plan view anomaly images

*Residual gravity (resUC200m) colour image semi transparent on a filtered magnetic grey scale (TMIRTP1VDAGC) image with residual gravity contours (0.1mGal interval) and planned drillholes*

# Lonar Prospect

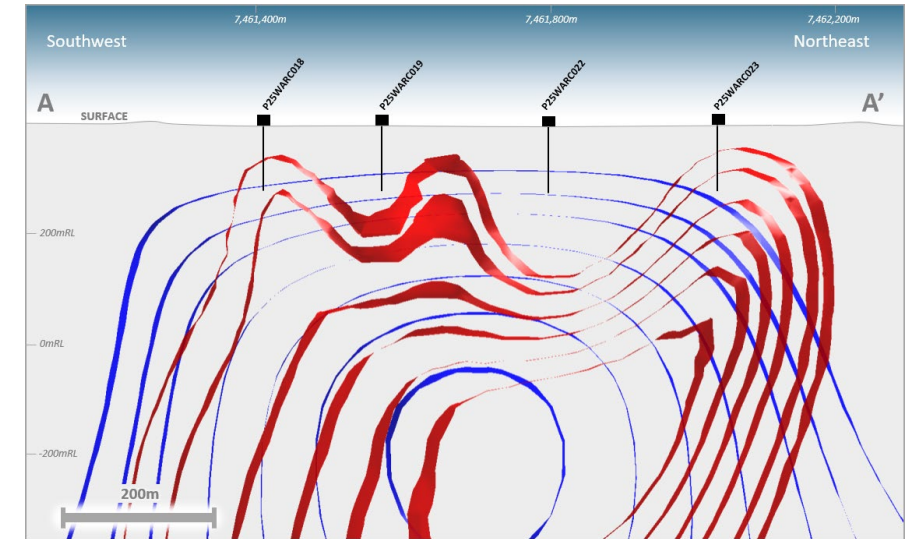
## Bullseye gravity and magnetic coincident anomaly

- Discrete, circular and coincident magnetic (+5,000nT) and gravity (+2.5mGal) feature approximately 1.2km in diameter with a semi-coincident shallow AEM response<sup>1</sup>
- Previous reconnaissance (400m by 400m) drilling around Lonar shows a cluster of anomalous gold in saprolite (>0.1g/t Au) and at the end of hole around the Lonar magnetic and gravity anomaly<sup>2</sup>



**Gravity and magnetic plan view anomaly images**

*Residual gravity (resUC200m) colour image semi-transparent on a filtered magnetic grey scale (TMIRTP1VDAGC) image with residual gravity contours (0.2mGal interval) and planned drillholes*



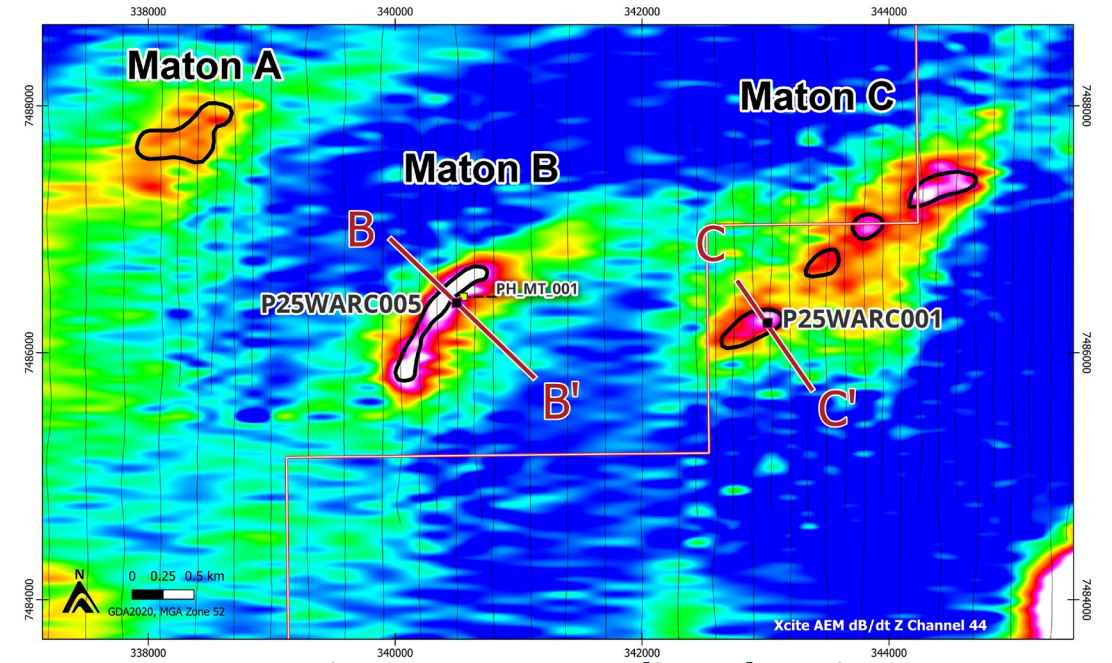
**Gravity and magnetic cross section inversions A-A'**

*Unconstrained inversion model results as iso-surface shells for select magnetic susceptibility (red shells) and gravity (blue shells) thresholds and planned drillholes*

# Maton Prospects

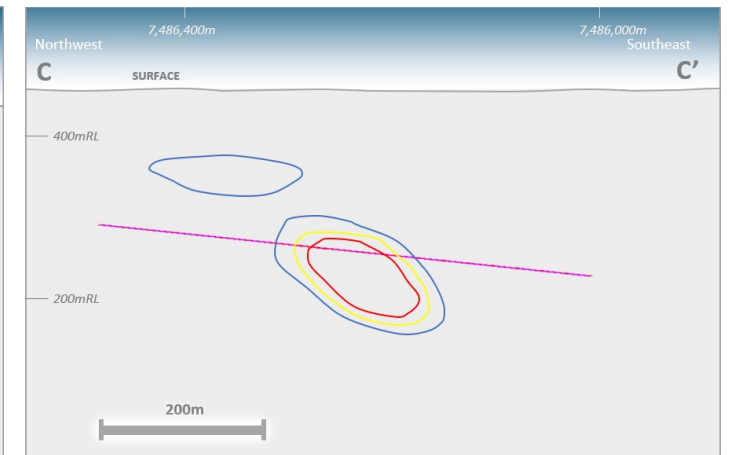
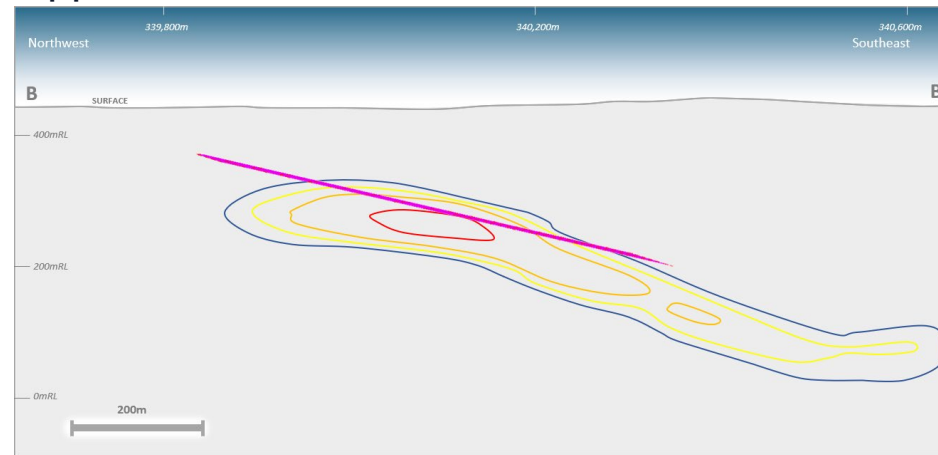
## Sediment-hosted copper prospects

- 2022 AEM survey detected three large, late time (channel 44) AEM conductive features<sup>1</sup>:
  - Maton A: 600m long anomaly (not modelled)
  - Maton B: 1,500m long anomaly with a weaker 1,000m extension (70-123S plate model conductance)
  - Maton C: 2,000m long semi-discrete and possibly fault offset anomaly (60-120S plate model conductance)
- The conductors are located close to the margin of the Arunta Province. The basement is interpreted by GSWA as meta sediments of the Amadeus Basin, a setting that may be prospective for sediment-hosted copper mineralisation
- Tali has a \$180,000 Exploration Incentive Scheme (EIS) grant approved for drilling testing in FY26<sup>1</sup>
- RTX retains a 51% buyback right over Maton A and B and 1.25% NSR over Maton A, B and C<sup>2</sup>



**Late Time AEM anomalies plan view**

Channel 44 image with AEM anomaly outlines, AEM survey lines and planned drillholes



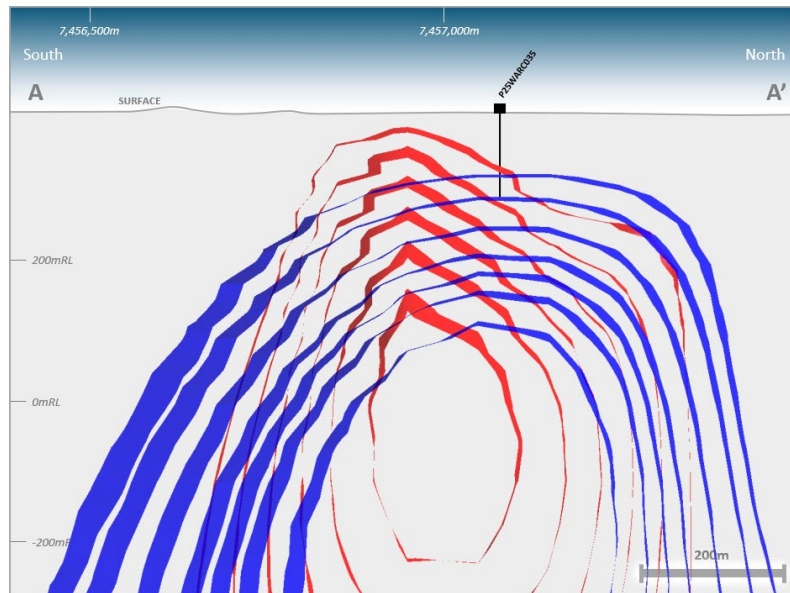
**Maton B (B-B' left) and Maton C (C-C' right) cross-sections**

Modelled AEM conductor source body plates and conductivity inversion model iso-surface shells and planned drillholes

# Gibson East Prospect

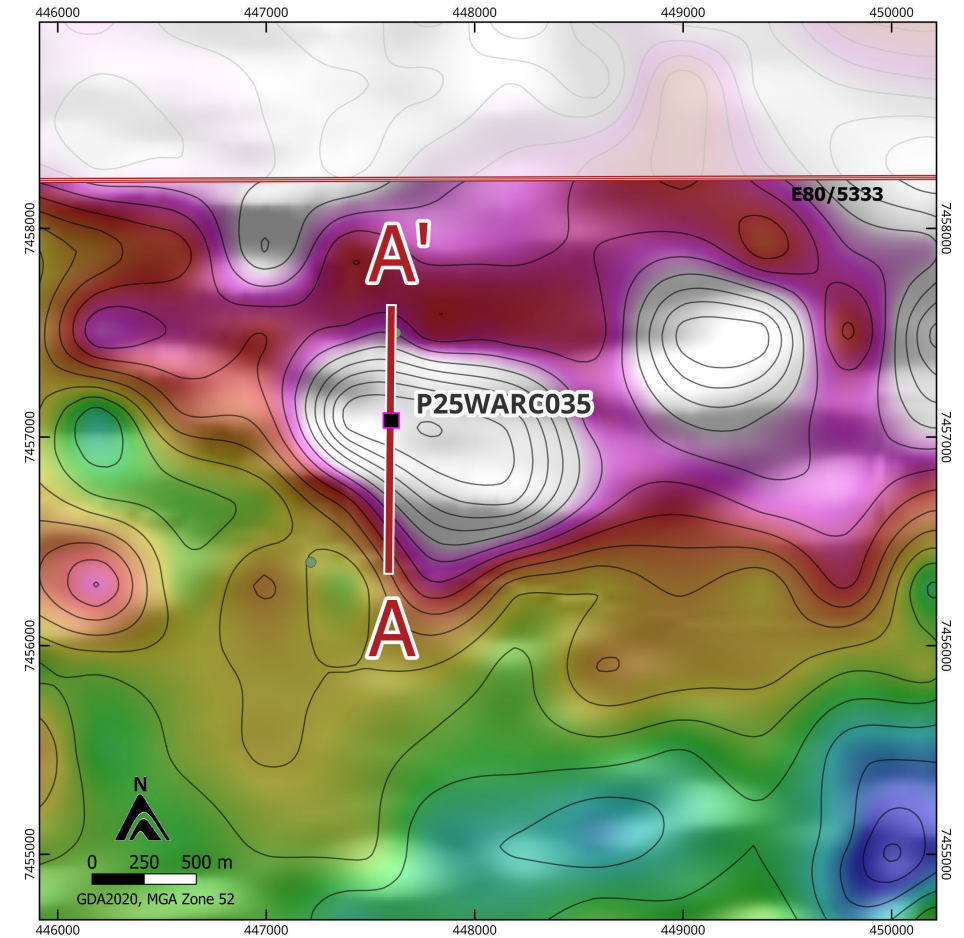
## Gravity and semi-coincident regional magnetic high

- Semi-discrete gravity anomaly high, which is semi-coincident with a regional magnetic high
- The gravity anomaly measures approximately 1.0km by 1.8km, with a maximum amplitude response of approximately +2.5mGal<sup>1</sup>
- Located proximal to the Central Australian Suture
- RTX retains a 1.25% NSR<sup>2</sup>



### Gravity and magnetic cross-section inversion A-A'

Unconstrained inversion model results as iso-surface shells for select magnetic susceptibility (red shells) and gravity (blue shells) thresholds and planned drillholes



### Gravity and magnetic plan anomaly images

Residual gravity (resUC200m) image semi-transparent on a filtered magnetic (TMIRTP1VDAGC) image with residual gravity contours (0.1mGal interval)

# ADDITIONAL PRIORITY PROSPECTS

ersonal use only

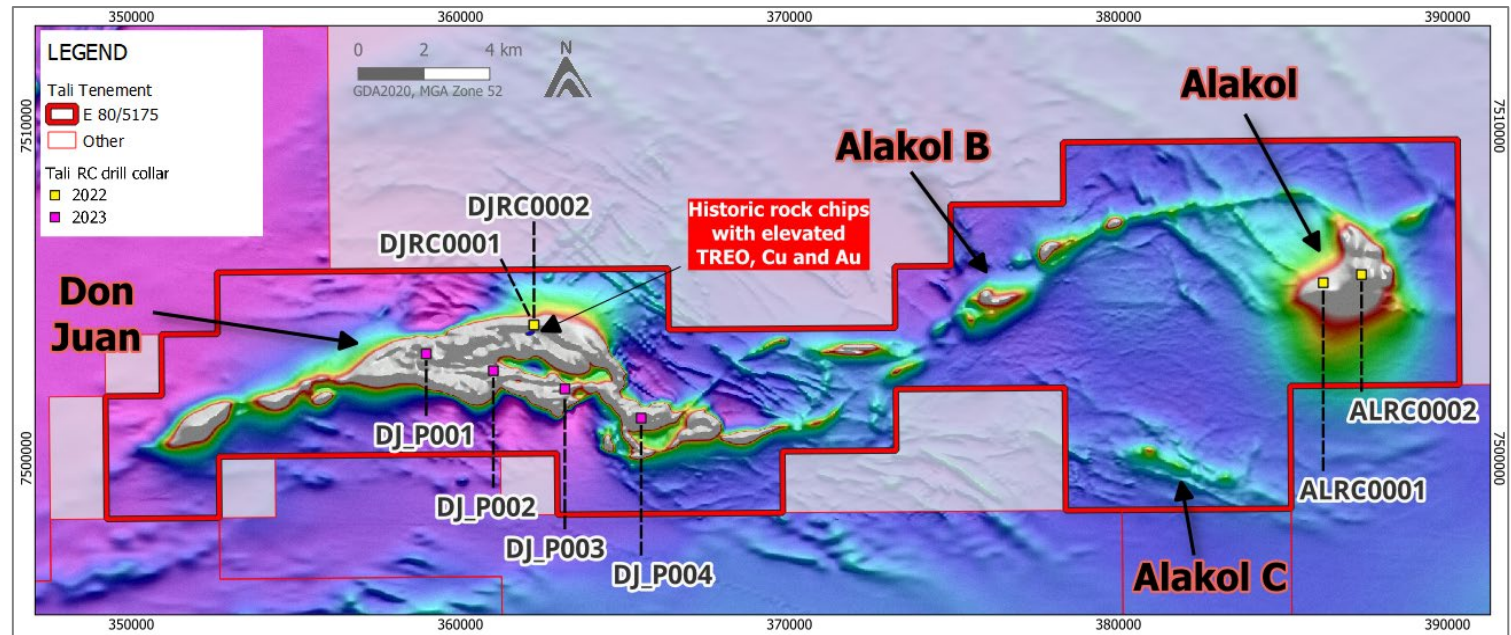


TALIRESOURCE

# Don Juan & Alakol Prospects

## Critical mineral carbonatite prospects

- Historical mapping and sampling identified anomalous gold, copper, and rare earth elements<sup>1</sup>
- Don Juan consists of complex, coincident magnetic (up to +5,100nT) and gravity (up to +11mGal) anomalies along a 17km E-W trending belt with multiple NE trending minor and major faults<sup>2</sup>
- The Don Juan and possibly the Alakol prospects show evidence of alkaline ultramafic intrusions and possibly carbonatites into the meta-igneous and sedimentary rocks
- In 2022 Tali drilled two RC drillholes at Don Juan, both intercepted basalts with interfingered Aillikites
- In 2023, Tali drilled four RC drillholes. Hole DJ\_P001 intersected wide >56m of anomalous rare earth element geochemistry and DJ\_P004 intersected trace disseminated chalcopyrite towards the end of hole<sup>3</sup>
- RTX retains a 1.25% NSR<sup>4</sup>

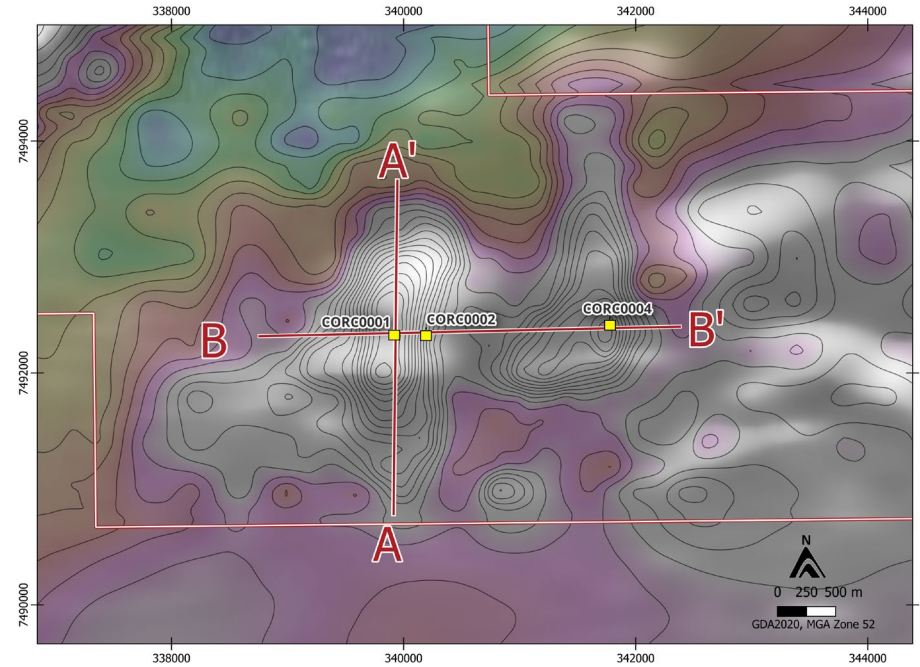


Don Juan and Alakol prospects over magnetics with historical drill collars

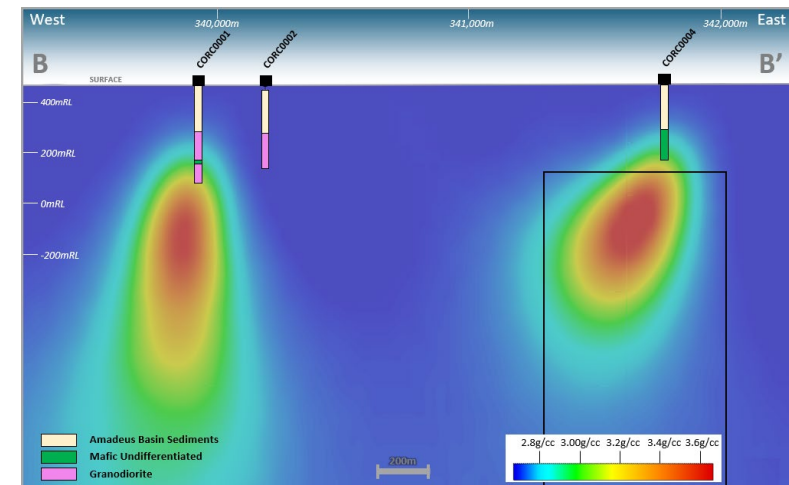
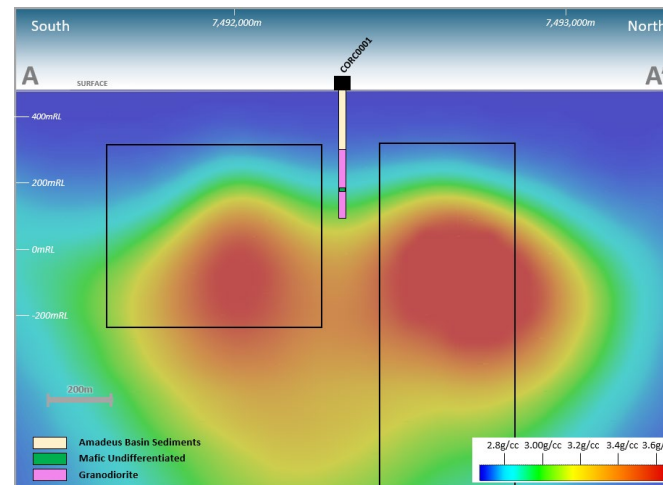
# Colorado Prospect

## Unexplained gravity anomalies

- Colorado includes two discrete, high-amplitude gravity anomalies, up to +3mGal, with coincident moderate AEM conductivity responses<sup>1</sup>
- Three vertical RC drillholes were completed in 2022
- The 2022 drilling did not explain the gravity anomaly or the AEM anomalism. The peak of the AEM response 500m further south of CORC0001 has not been drilled
- RTX retains a 1.25% NSR<sup>2</sup>



**Colorado gravity plan view**  
Half vertical derivative filtered gravity image (HVD) overlain by residual gravity contours (resUC200m) 0.1mGal contour interval, gravity station locations and previous drill holes



**Colorado gravity cross-sections A-A' (left) and B-B' (right)**  
3D unconstrained gravity inversion model image (background colour image), with polygonal gravity bodies (black rectangles). Gravity polygonal bodies have a density of 3.15g/cc

# Kalybas and Selenca Prospects

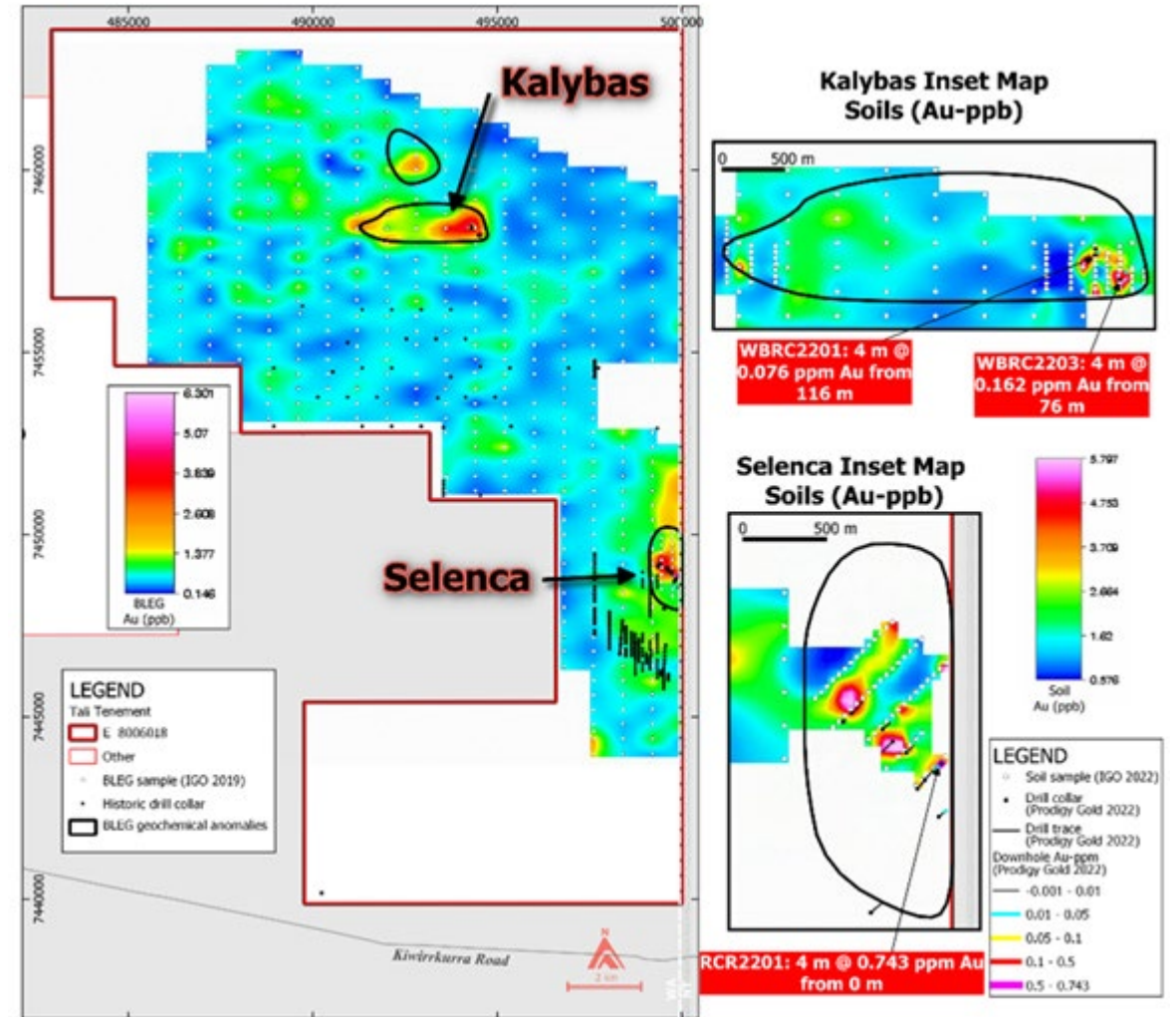
## Historical gold prospectivity

### Kalybas Prospect

- 13 RC holes were drilled by Prodigy Gold (in JV with IGO) in 2022 which detected weak anomalies up to 4m at 0.16g/t Au from 76m in the same area as the soil BLEG anomalism<sup>1</sup>

### Selenca Prospect

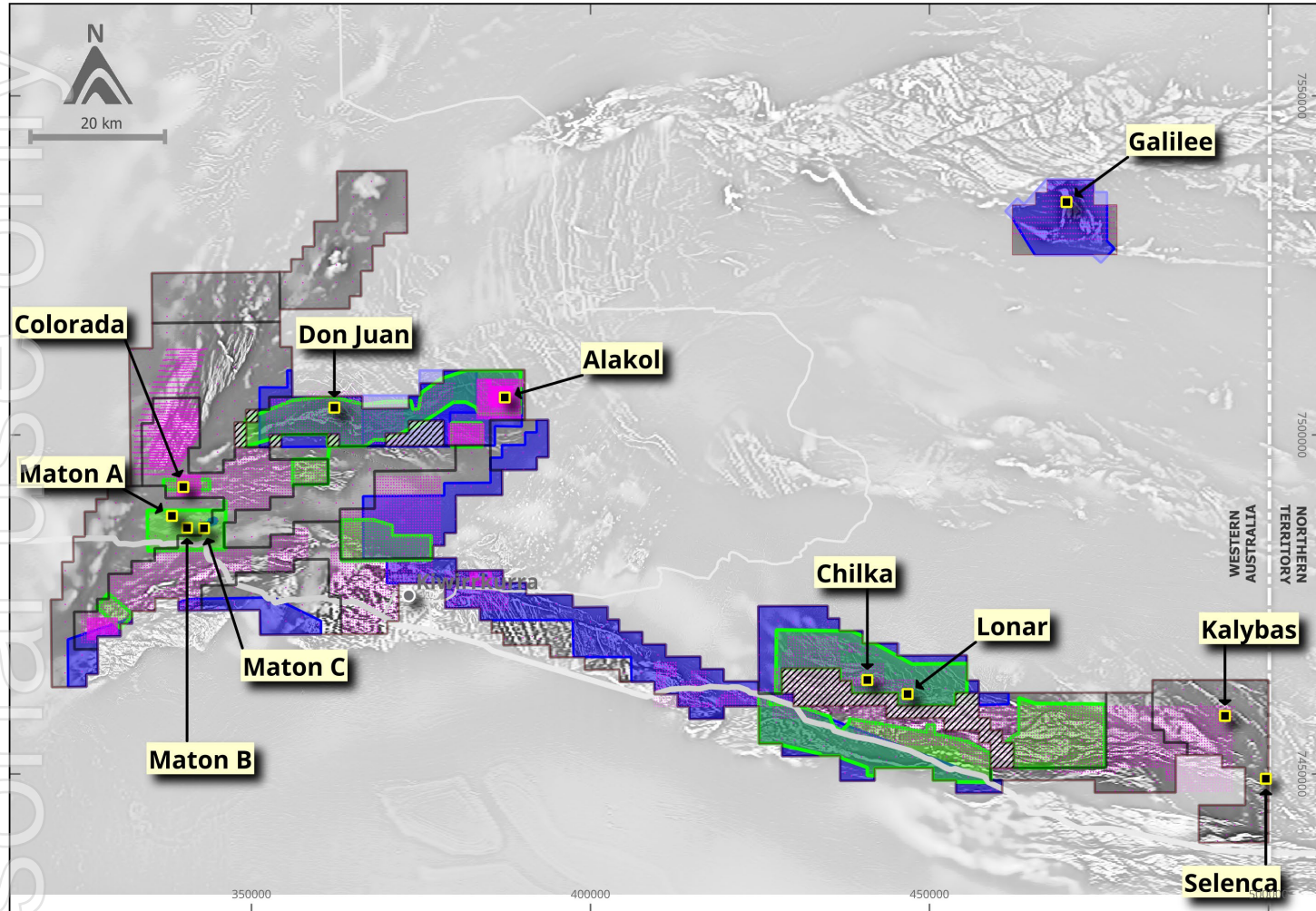
- Adjacent drill testing by IGO in 2019 (on the NT side – not within Tali tenure) returned a best intercept of 12m at 3.47g/t Au from drill hole 19LMRC072, surface geochemical sampling extended the gold-in-soil anomaly across the border into WA<sup>2</sup>
- Sulphide mineralisation was observed in downhole chip samples with the highest recorded value at 0.6% sulphur over 8m from 40-48m within RCRC2202 which was also associated with elevated Cu averaging 339ppm<sup>2</sup>
- The best result from the RC drilling on the Western Australian side was 4m at 0.74g/t Au in RCRC2201 from surface with strong alteration<sup>3</sup>



Kalybas and Selenca Soil BLEG anomalies

# Regional Exploration Opportunities

Significant land package requires further data and evaluation



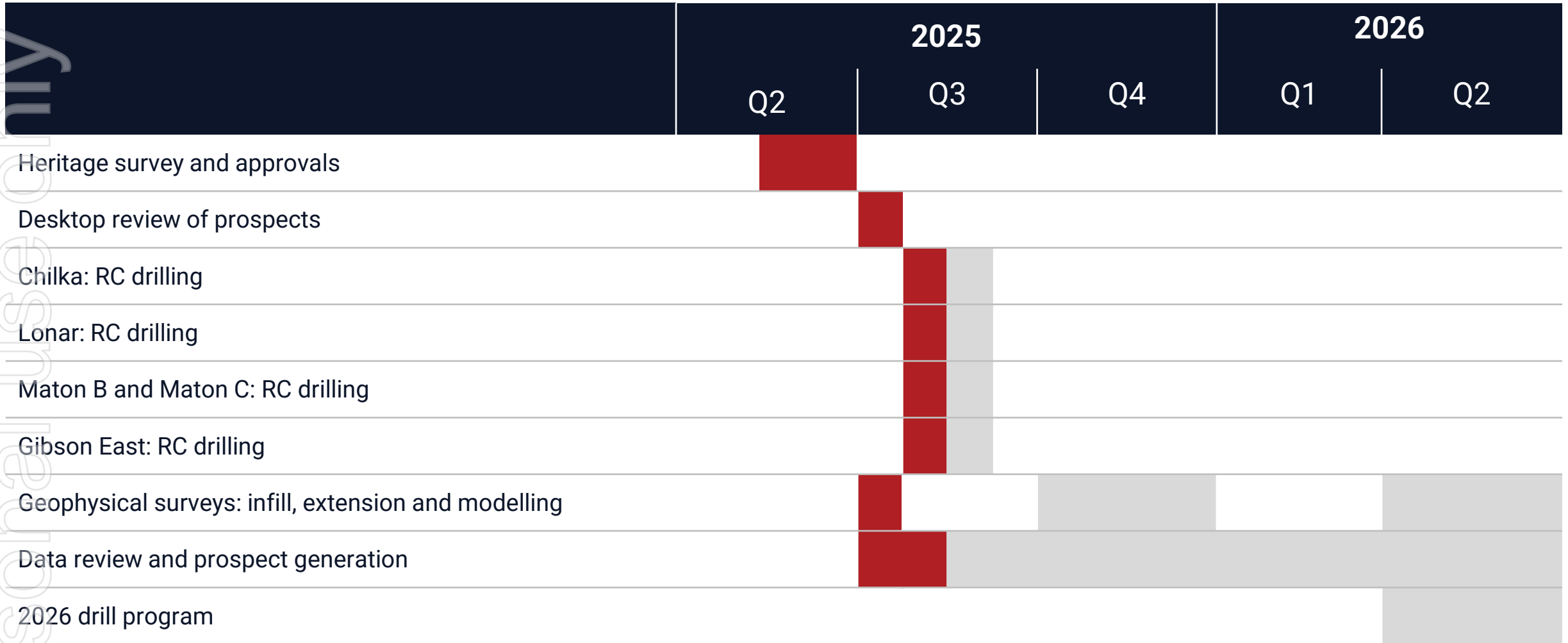
Tali geophysical data

- Planning underway for geophysical surveys in 2025/26 to outline additional new targets
- GSWA have commenced extensive geophysical surveys, including airborne magnetics and radiometrics<sup>1</sup>
- Additional potential prospects requiring further desktop review and follow-up

Blue - AMAG survey  
Green - AEM survey line  
Pink - ground gravity stations

# Exploration Plans for 2025 & 1H 2026

## Indicative timeline of proposed activities

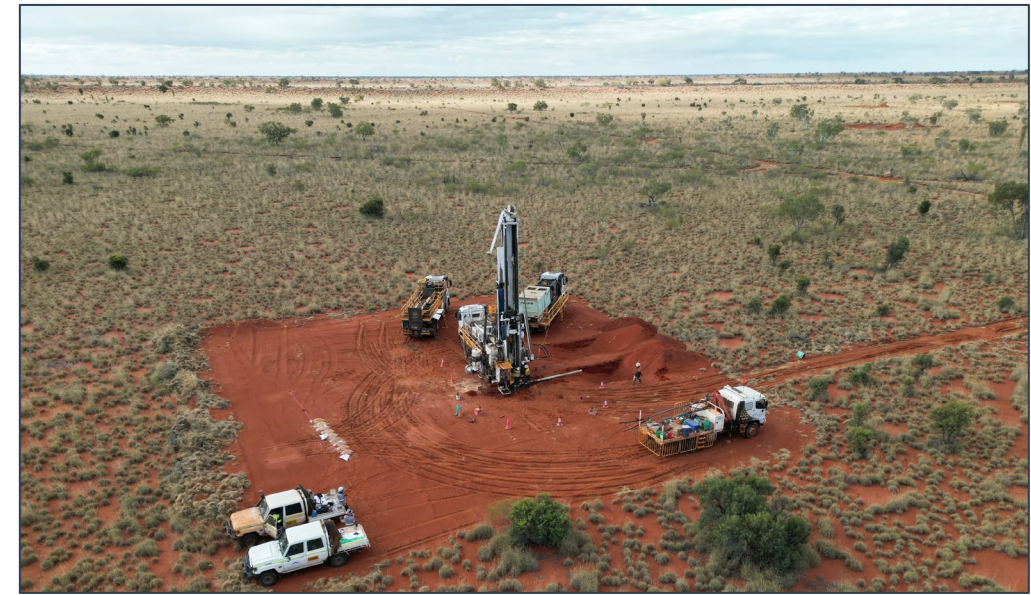


Activities are indicative only and may change without notice as business priorities are adjusted based on exploration results. The size of the activity block is to represent the uncertainty with regard timing of activities. Refer to the Tali's Prospectus dated 10 June 2025 for further details and to the Forward-Looking Disclaimer

# Social Licence & Operational Experience

Proven capability based on extensive experience

- Tali's team has been operating in the region **since 2014**
- Tali has **long-standing relationships** with Traditional Owners
- **Local community is highly supportive** of exploration activities in the region
- Tali and the Kiwirrkurra native title holders signed a **new Exploration and Land Access Agreement** in October 2024
- Multiple heritage surveys completed, including a recent survey in May 2025
- Significant exploration in the region provides **access to logistics, infrastructure and exploration services**



RC drilling program in August 2025



Heritage survey in May 2025



## TALI'S MISSION

To explore for Tier-1 mineral deposits in WA's central desert and to support the local communities in which we operate

### **The West Arunta**

Largest tenement holder in an exciting new mineral province

### **Copper focussed**

Strategic focus on copper, critical and precious metals, for the future

### **High priority targets**

High priority targets being drilled in Q3 2025

### **Social licence**

Strong relationships with Traditional Owners and the Kiwirrkurra community

### **Experienced team**

Significant operational experience in the West Arunta and proven corporate acumen



ersonal use only



**TALIRESOURCES**

## Contact Us

### **Tali Resources Ltd**

Suite 6 Level 2, 437 Roberts Road  
Subiaco  
Western Australia 6008

### **Investors**

Rhys Bradley – Managing Director  
E: [rbradley@taliresources.com.au](mailto:rbradley@taliresources.com.au)  
M: +61 8 6282 2700

### **Media**

Michael Vaughan – Fivemark Partners  
E: [michael.vaughan@fivemark.com.au](mailto:michael.vaughan@fivemark.com.au)  
M: +61 422 602 720

# Appendix A – References & Notes

## SLIDE 4

1. For full details refer to ASX announcement dated 18 July 2025
2. Refer to the Tali Prospectus, section 1.5 dated 10 June 2025 for further details

## SLIDE 6

1. [https://www.researchgate.net/figure/Map-of-Australia-displaying-the-main-cratonic-orogens-and-Proterozoic-basins-adapted\\_fig3\\_270762488](https://www.researchgate.net/figure/Map-of-Australia-displaying-the-main-cratonic-orogens-and-Proterozoic-basins-adapted_fig3_270762488) accessed 10 June 2025
2. COBRA – Amadeus Basin Assessment of Resource Potential, Northern Territory Geological Survey 2016

## SLIDE 9

1. Refer to the Tali Prospectus Independent Technical Assessment Report section 7.2, dated 10 June 2025 for further details
2. <https://www.rinconresources.com.au/wp-content/uploads/2020/11/Rincon-Prospectus-FINAL-03-11-20-with-Annexures-Website-Version.pdf> accessed 10 June 2025 (page 110)
3. Refer to **Rio Tinto Exploration Pty Limited Tenement Interests** on this page

## SLIDE 10

1. For full details refer to ASX announcement dated 28 July 2025

## SLIDE 11

1. For full details refer to ASX announcement dated 28 July 2025
2. Refer to the Tali Prospectus Independent Technical Assessment Report section 3.5.2, Table 2, dated 10 June 2025 for further details

## SLIDE 12

1. For full details refer to ASX announcement dated 28 July 2025
2. Refer to **Rio Tinto Exploration Pty Limited Tenement Interests** on this page

## SLIDE 13

1. For full details refer to ASX announcement dated 28 July 2025
2. Refer to **Rio Tinto Exploration Pty Limited Tenement Interests** on this page

## SLIDE 15

1. Refer to the Tali Prospectus Independent Technical Assessment Report section 5.2, dated 10 June 2025 for further details
2. Refer to the Tali Prospectus, section 4.8 dated 10 June 2025 for further details
3. Refer to the Tali Prospectus Independent Technical Assessment Report section 5.3, dated 10 June 2025 for further details
4. Refer to Rio Tinto Exploration Pty Limited Tenement Interests on this page

## SLIDE 16

1. Refer to the Tali Prospectus, section 4.8 dated 10 June 2025 for further details
2. Refer to Rio Tinto Exploration Pty Limited Tenement Interests on this page

## SLIDE 17

1. Refer to the Tali Prospectus Independent Technical Assessment Report section 8.2, dated 10 June 2025 for further details
2. Refer to Prodigy Gold (ASX: PRX) announcement dated 16 October 2019
3. Refer to the Tali Prospectus Independent Technical Assessment Report section 8.2, dated 10 June 2025 for further details

## SLIDE 18

1. <https://www.australianenders.com.au/tenders/575148/aileron-regional-airborne-magnetic-and-radiometric-survey-2025-26> accessed 10 June 2025

## Rio Tinto Exploration Pty Limited Tenement Interests

- 0.25% NSR over: E80/6025, E80/6026, E80/6027, E80/6033
- 1.25% NSR over: E80/5476, E80/5477, E80/5478
- 1.25% NSR and a right of first refusal over: E80/5175, E80/5333, E80/5334, E80/5423, E80/5489
- 51% buyback right over sub-blocks covering two exploration prospects:
  - E80/5476 (the Maton A & B Prospect)
  - E80/5477 (the Fender Prospect)