

ASX RELEASE | CLEARVUE TECHNOLOGIES LIMITED | (ASX:CPV | OTCQX:CVUEF)

ClearVue Investor Update Presentation

Ahead of the Company's 13 August 2025 Investor Update presentation, ClearVue shares content of its planned presentations to the market.

HIGHLIGHTS:

- **Accelerating Commercialization:** ClearVue's executive team presents how the Company is accelerating commercialization on a global scale.
- **Operational Focus:** The operational focus is on product optimisation, effective OEM and vendor management, best-in-class compliance and certification and product delivery excellence.
- **Research and Development:** The Company's research and development is concentrated on removing barriers to adoption of ClearVue's Solar Façade.
- **Business Development:** A low cost go-to-market strategy which is repeatable and scalable is driving commercialization forward with a strong partner strategy.
- **Marketing Communications & Branding:** ClearVue marketing is making a concerted effort to strongly highlight what makes ClearVue superior, engaging with and supporting our partners and actively driving demand generation.
- **Sustainability Strategy:** Using a net zero to zero approach to sustainability with a spotlight on climate resiliency, biodiversity, circularity and ESG disclosures.
- **Global Commercialisation Takes Shape:** Company continues path to global commercialisation.

13 August 2025 – Perth, Australia – ClearVue Technologies Limited (ASX:CPV) (ClearVue or the Company) shared its presentation content as the Investor Update event began in the Company's Perth headquarters under full disclosure.

"It is a privilege to have this opportunity to bring our extended team together to share how we are moving from innovation to impact with our shareholders. We have the right team to accelerate ClearVue's global commercialization," said Mr. Douglas (Doug) Hunt, Managing Director and Chief Executive Officer, ClearVue Technologies. "The future is bright, and we have built a solid foundation for continued innovation and growth. Our R&D strategy is reducing the barriers to broad market adoption. Our sound and pragmatic operational approach is ensuring we have the business foundation in place to take the business forward to drive long term

shareholder value. Our business development, partner engagement and marketing efforts are supporting revenue generation, increased profitability and market share growth. We have a strong partner engagement plan, and our business development is on the right track. In addition, our agenda for aligning ClearVue's strategy with net zero to zero programmes is providing a strategic advantage in collaborating with our partners and customers around the globe. I am proud of our team of dedicated professionals and the collaborative environment we are creating with our internal team and board members, shareholders, partners and customers. We are happy to share the ClearVue Investor Update presentation with our shareholders. We look forward to working together to make buildings more sustainable as we shape ClearVue's position on the global construction and real estate development landscape."

Authorised by the Board of ClearVue Technologies Limited.

ABOUT CLEARVUE TECHNOLOGIES LIMITED

ClearVue Technologies Limited (ASX: CPV; OTCX: CVUEF) is an Australian technology company that integrates solar technology into building façade and rooftop surfaces to provide renewable energy generation and offset the operational carbon footprint of buildings. The Company's advanced, patented glass technology preserves glass transparency maintaining building aesthetics while generating energy.

ClearVue has extended solar energy-generation to vision glass, cladding, spandrel, balustrade, and skylight solutions. These solutions can offset operational energy requirements significantly contributing to the net zero building.

ClearVue's integrated solar façade is revolutionizing the way buildings are designed, constructed, and renovated. Experience how building façades will become a major contributing factor to reducing operational carbon by visiting ClearVue at www.clearvuepv.com. Follow ClearVue on: [Facebook](#) | [Instagram](#) | [LinkedIn](#) | [YouTube](#).

FOR FURTHER INFORMATION, PLEASE CONTACT:

Media Inquiries

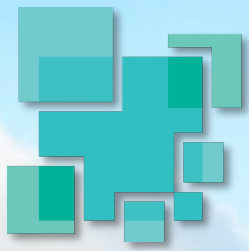
Rama Razy
rama.razy@atomicgroup.com.au
+61 (0) 498 440 142

Investors

Adrian Mulcahy
Adrian.mulcahy@atomicgroup.com.au
+61 (0) 438 630 42

FORWARD LOOKING STATEMENTS

Statements contained in this release, particularly those regarding possible or assumed future performance, revenue, costs, dividends, production levels or rates, prices, or potential growth of ClearVue Technologies Limited, are, or may be, forward looking statements. Such statements relate to future events and expectations and, as such, involve known and unknown risks and uncertainties. Actual results and developments may differ materially from those expressed or implied by these forward-looking statements depending on a variety of factors.



ClearVuePV



Doug Hunt
Chief Executive Officer
doug.hunt@clearvuepv.com
+61 424 235 947

From Innovation to Impact

Accelerating Global Commercialisation



SOLAR CLADDING

SOLAR CLADDING

SOLAR SPANDREL

SOLAR VISION GLASS

SOLAR SKYLIGHT

SOLAR VISION GLASS

SOLAR BALUSTRADE

INTEGRATED SOLAR FAÇADE FOR A SUSTAINABLE BUILDING ENVIRONMENT

www.clearvuepv.com

Personal use only

Accelerating Global Commercialisation

History is not indicative of tomorrow

The present has a few challenges, yet there are abundant opportunities

The future is bright – A solid foundation for growth and continued innovation

The right team and the right culture

Personal use only



Tao Zhang
Chief Operating Officer
tao@clearvuepv.com
+61 466 985 257

From Innovation to Impact

Accelerating Global Commercialisation



SOLAR CLADDING

SOLAR CLADDING

SOLAR SPANDREL

SOLAR VISION GLASS

SOLAR SKYLIGHT

SOLAR VISION GLASS

SOLAR BALUSTRADE



ClearVue[®]PV

Building a bridge between the construction & solar industries

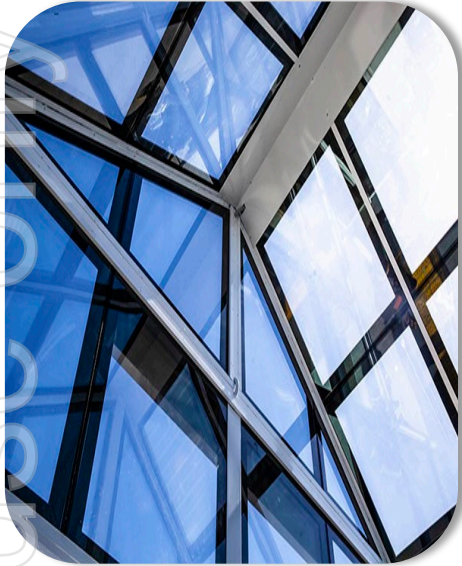
ClearVue turns BIPV into standard building materials that are seamlessly deployed in building façades by prioritizing industry requirements and thermal performance.

5
years or less
installed
incremental
payback



ersonal use only

ClearVue: For a sustainable building envelope



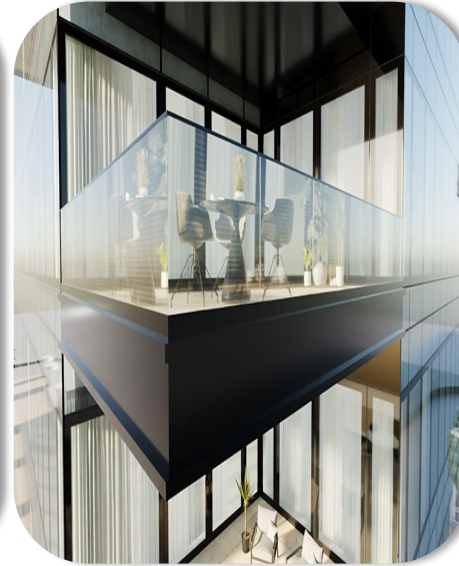
SOLAR VISION GLASS



SOLAR SPANDREL



SOLAR CLADDING



SOLAR BALUSTRADE



SOLAR SKYLIGHT

ClearVue's integrated solar façade is revolutionizing the way buildings are designed, constructed and renovated.

Major Competitive Advantages

| | Feature/Benefit | ClearVue |
|---------------|------------------------|---|
| Architectural | Size Flexibility | Up to 2350mm x 4500mm |
| | Thickness | 2+2mm laminated to 25+25mm laminated |
| | Colour & Pattern | Full range and can be customised |
| | Shapes and Curves | Customizable to meet requirements |
| Electrical | Cells | Crystalline silicon Compatible to all PERC/Shingled/Topcon/BC technologies |
| | Density | Can be customised |
| | Power output | Up to 210 W/m ² |
| | Tolerance | ± 5% |
| Structural | Trafficable | ✓ |
| | AS 4284 Façade Testing | ✓ |

Personal use only

Major Competitive Advantages

| | Feature/Benefit | ClearVue |
|-------------|---|--|
| Thermal | Insulated Glazing Unit (IGU) Integration | All products can be integrated into double glazing units without compromising IGU seal |
| | Argon Gas | ✓ |
| | Vacuum Glass Integration | ✓ |
| | Low-e coating | ✓ |
| | Thermal Transmittance (U-Value) | 0.4 - 1.7 W/m ² K for a CPV solar DGU |
| Reliability | IGU seal - ASTM E 2190, EN1279.2, AS 4666 | ✓ |
| | Junction Box | IP 68 |
| Fire | ANSI/UL 790 (roof mounted) | Class A |
| | Combustibility (EN13501.1, wall mounted) | A2-s1, d0 (Limited Combustible) |
| | Ignitability (AS 1530.3) | Compliant |

Personal use only

Major Competitive Advantages

| | Feature/Benefit | ClearVue |
|----------------------------|------------------------|--|
| Warranty | Product Warranty | Up to 12 years by regions |
| | Power Output Warranty | 30-year 80% solar cell output warranty |
| Installation & Maintenance | Framing & Installation | No additional modification on existing framing system due to rear mounted junction box |
| | Maintenance | Same as standard glazing system |
| Technical Support | Local Service | Global service |

Personal use only

Materiality Matching



The image shows a modern multi-story building facade with various materials. Callout lines connect specific areas of the building to material swatches and their corresponding W/m² values:

- VITRAPANEL - MEDIUM GREY**: Metro Marble 129 W/m²
- LIGHT APPLIED FINISH**: Zenith Silver 138 W/m²
- FLAT METAL CLADDING - BLACK**: Mystic Metal 210 W/m²
- CLEAR GLASS BALUSTRADE**: Balustrade 75W/m²
- RED BRICK**: Red Brick
- EARTHY BROWN COLOUR FINISH**: Earthy Brown Colour Finish

Operational Priorities

- **Production Optimisation** – Support R&D to reduce production time and cost
- **OEM & Supplier Management** – Strengthening partnerships, quality control and assurance
- **Compliance & Certification** – Maintaining global standards and technical accreditations
- **Cross-Functional Collaboration** – Bridging technical, commercial, and executive functions
- **Product Delivery Excellence** – Timely, on-budget, high-quality project outcomes



Chris Cole
Head of Research & Development
chris@clearvuepv.com
+61 481 393 901

From Innovation to Impact

Accelerating Global Commercialisation



ersonal use only

INTEGRATED SOLAR FAÇADE FOR A SUSTAINABLE BUILDING ENVIRONMENT

www.clearvuepv.com

Innovation to Accelerate Commercialisation

- BIPV needs to be a building material first, and a power generator second
- By reducing the barriers to entry, ClearVue can accelerate commercialisation
- ClearVue already has the best products on the market, but to stay ahead, we need to:
 1. Reduce barriers to install
 2. Improve payback periods

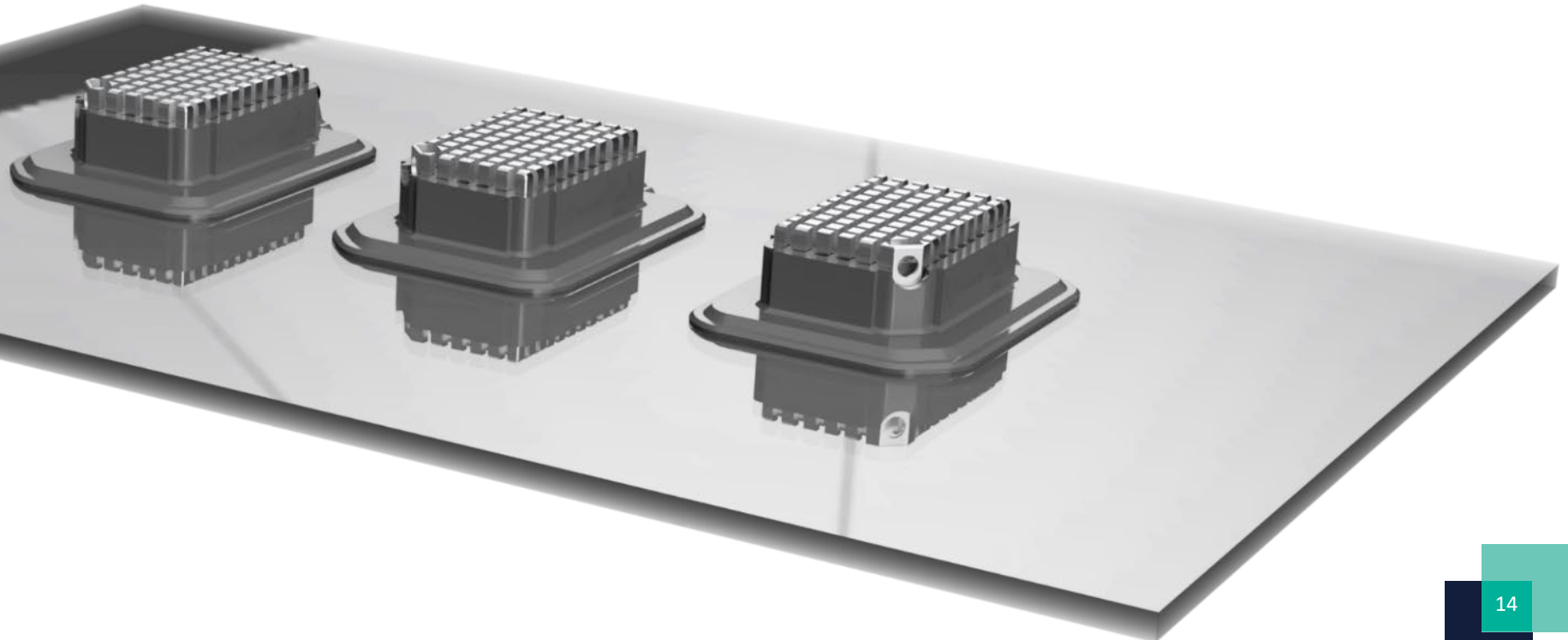
Reducing Barriers to Install



- ClearVue products need to be a building material first, and an energy generator second.
- If we can demonstrate to stakeholders that ClearVue products are no different to the materials they are used to working with, adoption will accelerate.
- This means addressing traditional industry pain points head-on with innovations to:
 - Reduce installation costs
 - Improve fire performance
 - Demonstrate significant longevity
 - Maximise thermal performance

Reducing Barriers to Install - Example

- Improves product reliability
- Improves fire performance
- Product differentiator
- Seamless integration



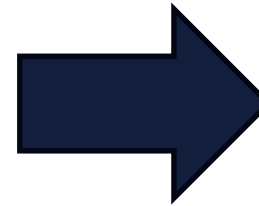
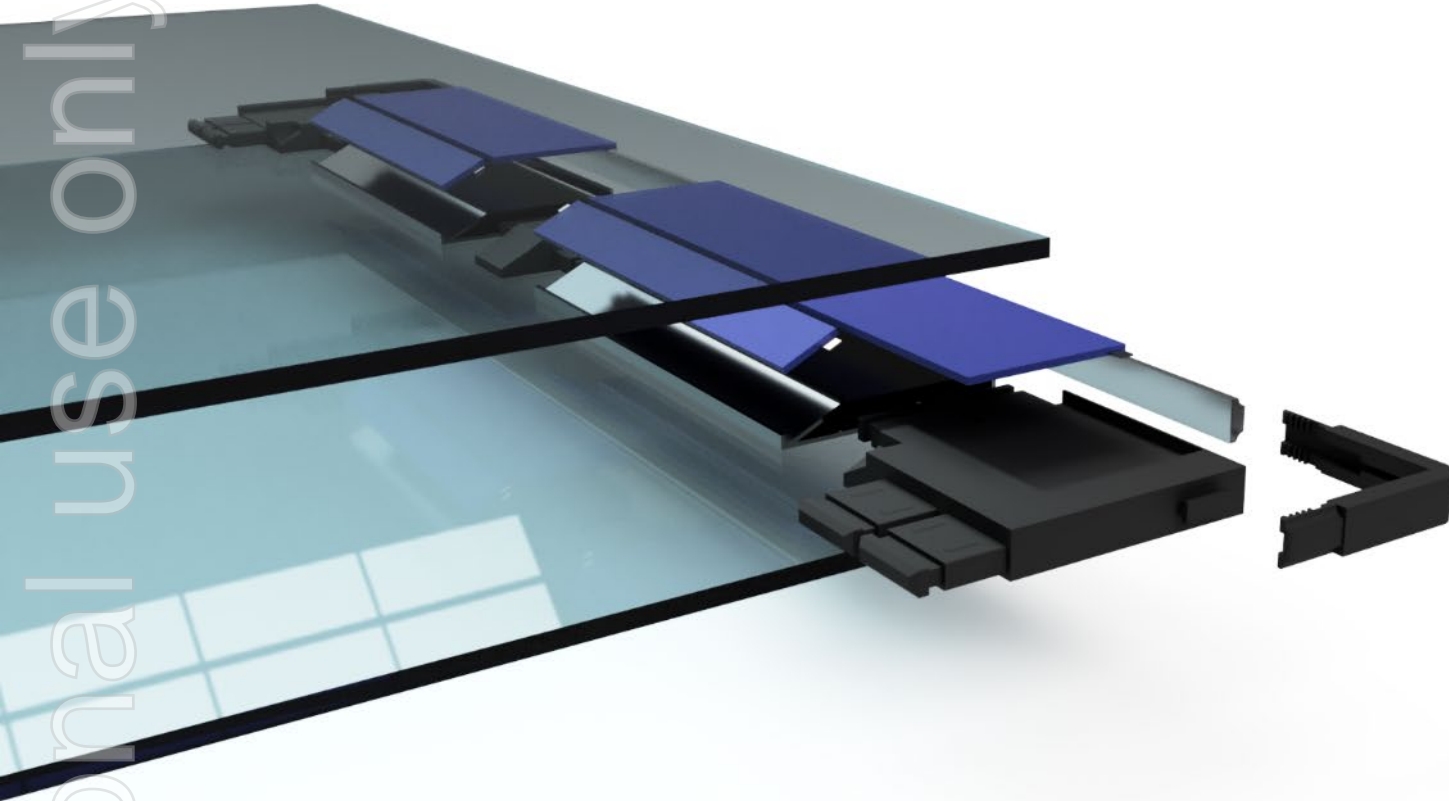
Improving Payback Periods



1. Reduce manufacturing complexity and cost
 - Collaboration with licensees on manufacturing pain points
 - Improving system design for manufacturing at scale
2. Increase power generation
 - Innovating on module design and efficiency

Improving Payback Periods - Example

ersonal use only





Clifton Smyth
Chief Business Development Officer
clifton.smyth@clearvuepv.com
+44 756 876 8947

From Innovation to Impact

Accelerating Global Commercialisation



SOLAR CLADDING

SOLAR SPANDREL

SOLAR VISION GLASS

SOLAR SKYLIGHT

SOLAR VISION GLASS

SOLAR BALUSTRADE

SOLAR CLADDING

INTEGRATED SOLAR FAÇADE FOR A SUSTAINABLE BUILDING ENVIRONMENT

www.clearvuepv.com

Personal use only

Go-to-Market Strategy

ClearVue has a low cost go-to-market strategy that is repeatable and scalable

LICENSE PARTNERS
IGU MANUFACTURERS

Established, growing business, excellent reputation, manufacturing capabilities and loyal client base

End client wants, needs, demands a full solution

STRATEGIC PARTNERS
FAÇADE MANUFACTURERS
SOLAR/ELECTRICAL INSTALLERS

Influential in the industry, first-rate service and support, well-known for delivering quality solutions

License + Strategic Partners – Global Reach



CURRENT

- 11 License Partners
- 4 Strategic Partners

Personal use only

License + Strategic Partners – Global Reach

Personal use only



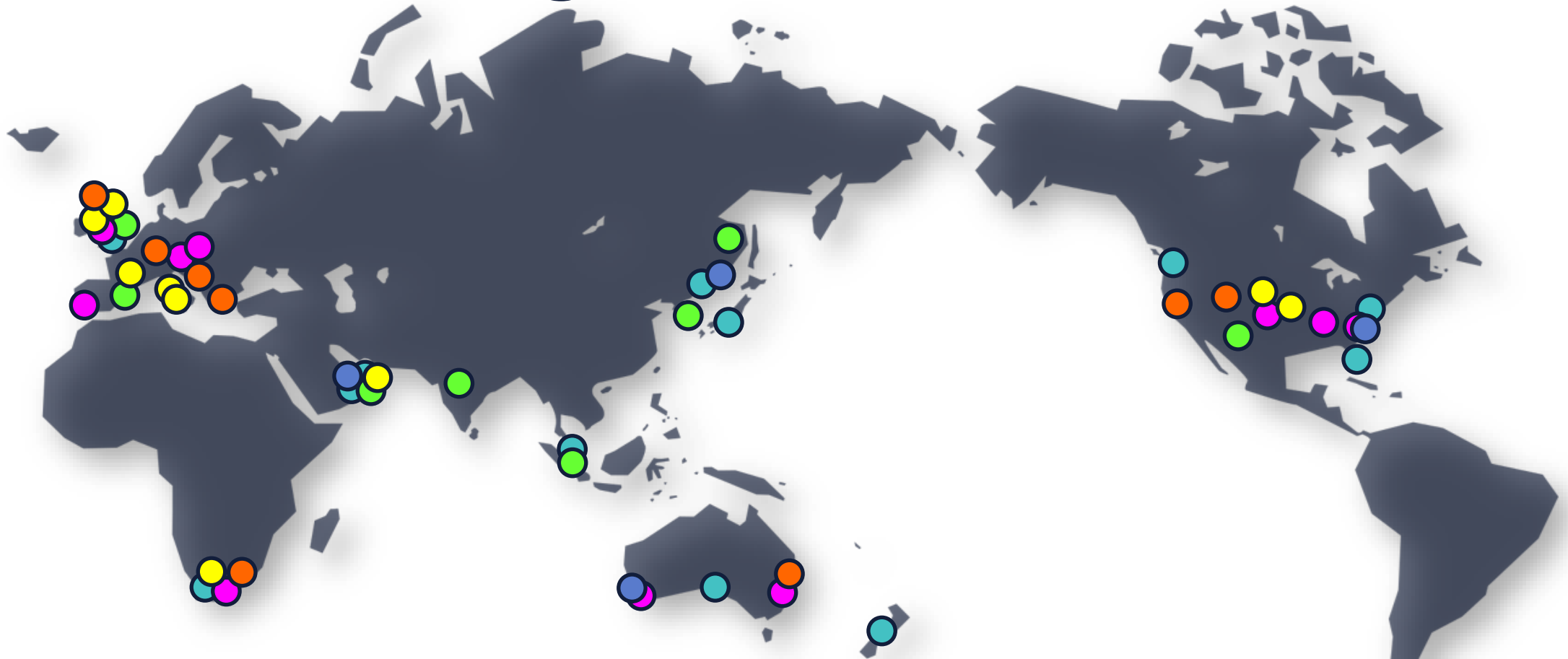
CURRENT

- 11 License Partners
- 4 Strategic Partners

6-12 MONTHS

- ~45% License Partners
- ~60% Strategic Partners

License + Strategic Partners – Global Reach



CURRENT

- 11 License Partners
- 4 Strategic Partners

6-12 MONTHS

- ~45% License Partners
- ~60% Strategic Partners

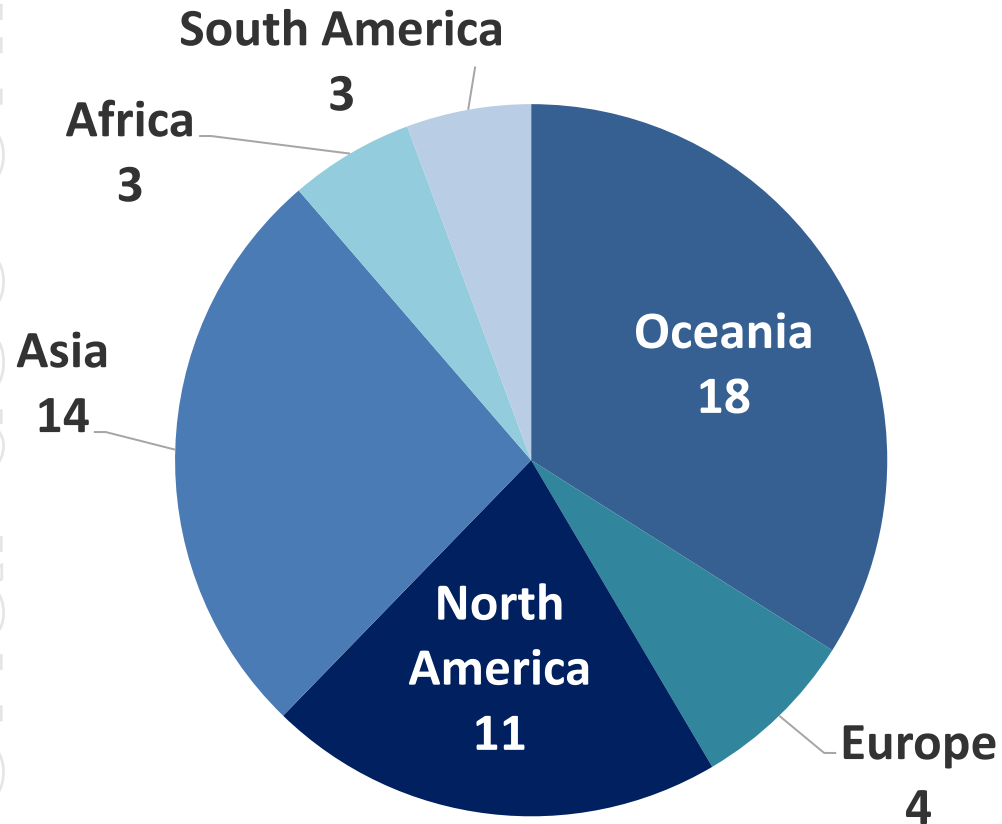
12-24 MONTHS

- ~33% License Partners
- ~20% Strategic Partners

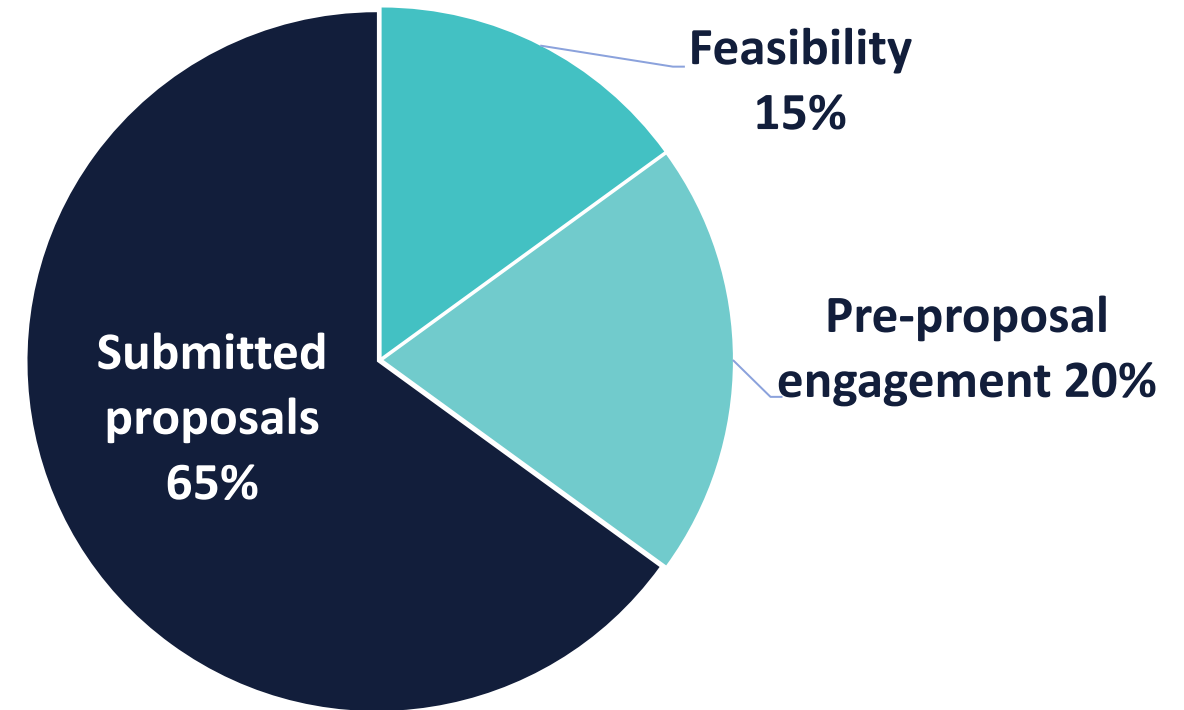
Personal use only

Current Project Overview

Leads and Tenders | By Region



Sales Stages



Personal use only

Project Timeline

Leicester Street | Melbourne, Australia

First Contact

Jul 2023

Proposal + Engagement

Jul 2023

Acceptance

Jan 2024

Product Shipped

May 2024

100 St Georges | Perth, Australia

First Contact

Jan 2024

Proposal + Engagement

Feb 2024

Acceptance

Oct 2024

Product Shipped

Jul 2025

Tattersalls Club | Sydney, Australia

First Contact

Jan 2024

Proposal + Engagement

Mar 2024

Acceptance

May 2025

Product Shipped

Mar 2026

World Bank Administration Building | Abuja, Nigeria

First Contact

Jul 2024

Proposal + Engagement

Jul 2024

Acceptance

Apr 2025

Product Shipped

Jul 2025

Personal use only



Lisa Dreher
Global Marketing Director
lisa.dreher@clearvuepv.com
+1 425 442 1301

From Innovation to Impact

Accelerating Global Commercialisation



SOLAR CLADDING

SOLAR CLADDING

SOLAR SPANDREL

SOLAR VISION GLASS

SOLAR SKYLIGHT

SOLAR VISION GLASS

SOLAR BALUSTRADE

Accelerating Global Commercialisation

Support Profitability | Increase Revenue | Drive Market Share Growth



Clearly communicate what makes ClearVue superior



Boost partnership growth and expansion



Actively drive demand and engage targeted audiences

Personal use only

Drive Demand for ClearVue Solutions

Address audience-specific interests and requirements



PARTNERS

Architectural envelope/
curtainwall manufacturers

Insulated glass unit
manufacturers



INFLUENCERS

Architects

Façade consultants

Glazing and solar
contractors/distributors



CORPORATE

Real estate developers

Real estate owners

Government

Corporate innovation leaders

Sustainability executives

SHAREHOLDERS/INVESTORS

MEDIA/ANALYSTS

Personal use only

Short Term Priorities

- 1 Review marketing spending, programs, vendors
- 2 Evaluate and clean up prospect database

- 1 Extended marketing team
- 2 CRM/Marketing application
- 3 Refresh corporate website

- 1 Institute differentiation & demand gen programs
- 2 Develop and execute on partner program
- 3 Investor communications



Georgina Cook
Sustainability Lead
georgina@clearvuepv.com
+61 424 255 525

From Innovation to Impact

Accelerating Global Commercialisation



SOLAR CLADDING

SOLAR CLADDING

SOLAR SPANDREL

SOLAR VISION GLASS

SOLAR SKYLIGHT

SOLAR VISION GLASS

SOLAR BALUSTRADE

Commercialisation via Sustainability

ersonal use only



**Climate
resilience and
adaptation**



**Biodiversity
and nature
based risk**



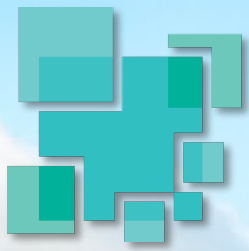
**Net Zero to
Zero**



Circularity



**ESG
disclosures**



ClearVue^{PV}

Thank you



Doug Hunt

Chief Executive Officer

doug.hunt@clearvuepv.com

+61 424 235 947



INTEGRATED SOLAR FAÇADE FOR A SUSTAINABLE BUILDING ENVIRONMENT

www.clearvuepv.com

Questions

- Competitive analysis
- Glass build up differences in results between installations (BCA trial)
- Project delivery and installation process
- Aligning product solutions to the market requirements and expectations
- U.S. go-forward strategy
- Partnerships with industry leaders and innovators
 - Shared vision
- Acquisitions and subsidiaries
- Strategic relationships and support
- Geographical focus

Personal use only

Legal Disclaimer



This presentation has been prepared and issued by ClearVue Technologies Limited (the "Company") to assist it in informing interested parties about the Company and its progress which is current as at the date of this presentation. This presentation is for information purposes only it should not be considered as an offer or invitation to subscribe for or purchase any securities in the Company or as an inducement to make an offer or invitation with respect to those securities. This presentation does not purport to contain all the information that a prospective investor may require in connection with any potential investment in the Company. You should not treat the contents of this presentation, or any information provided in connection with it, as financial advice, financial product advice or advice relating to legal, taxation or investment matters. No representation or warranty (whether express or implied) is made by the Company or any of its officers, advisers, agents or employees as to the accuracy, completeness or reasonableness of the information, statements, opinions or matters (express or implied) arising out of, contained in or derived from this presentation or provided in connection with it, or any omission from this presentation, nor as to the attainability of any estimates, forecasts or projections set out in this presentation. Neither the Company or its advisers have verified the accuracy or completeness of the information, statements or opinions contained in this presentation. This presentation is provided expressly on the basis that you will carry out your own independent inquiries into the matters contained in the presentation and make your own independent decisions about the affairs, financial position or prospects of the Company. The Company reserves the right to update, amend or supplement the information at any time in its absolute discretion (without incurring any obligation to do so). Neither the Company, nor its related bodies corporate, officers, their advisers, agents and employees accept any responsibility or liability to you or to any other person or entity arising out of this presentation including pursuant to the general law (whether for negligence, under statute or otherwise), or under the Australian Securities and Investments Commission Act 2001, Corporations Act 2001, Competition and Consumer Act 2010 or any corresponding provision of any Australian state or territory legislation (or the law of any similar legislation in any other jurisdiction), or similar provision under any applicable law. Any such responsibility or liability is, to the maximum extent permitted by law, expressly disclaimed and excluded. Nothing in this material should be construed as either an offer to sell or a solicitation of an offer to buy or sell securities. It does not include all available information and should not be used in isolation as a basis to invest in the Company.

Future Matters | This presentation may contain reference to certain intentions, expectations, future plans, strategy, revenue forecasts and prospects of the Company. Those intentions, expectations, future plans, strategy, revenue forecasts and prospects may or may not be achieved and may be "forward-looking statements". They are based on certain assumptions, which may not be met or on which views may differ and may be affected by known and unknown risks. The performance and operations of the Company may be influenced by a number of factors, many of which are outside the control of the Company. No representation or warranty, express or implied, is made by the Company, or any of its directors, officers, employees, advisers or agents that any intentions, expectations or plans will be achieved either totally or partially or that any particular rate of return will be achieved. Given the risks and uncertainties that may cause the Company's actual future results, performance or achievements to be materially different from those expected, planned or intended, recipients should not place undue reliance on these intentions, expectations, future plans, strategy, revenue forecasts and prospects. The Company does not warrant or represent that the actual results, performance or achievements will be as expected, planned or intended.

US Disclosure | This document does not constitute any part of any offer to sell, or the solicitation of an offer to buy, any securities in the United States or to, or for the account or benefit of any "US person" as defined in Regulation S under the US Securities Act of 1993 ("Securities Act"). The Company's shares have not been, and will not be, registered under the Securities Act or the securities laws of any state or other jurisdiction of the United States, and may not be offered or sold in the United States or to any US person without being so registered or pursuant to an exemption from registration including an exemption for qualified institutional buyers.