



Cochlear Limited  
**Tax Contribution  
Report 2025**



personal use only



# Contents

<b>About Cochlear</b>	<b>2</b>
<b>Tax strategy and governance</b>	<b>3</b>
Approach to risk management and governance	3
Attitude towards tax planning	3
Accepted level of risk in relation to taxation	3
Approach to engagement with global revenue authorities	3
International related party dealings	4
<b>Income taxes disclosed in the Annual Report</b>	<b>5</b>
Reconciliation of accounting profit to income tax expense	5
Reconciliation of income tax expense to cash tax paid	6
Reconciliation of accounting profit to income tax expense for the Australian tax consolidated group	6
International tax reform	6
Tax residency	6
<b>Tax contribution summary</b>	<b>7</b>
<b>ATO tax transparency disclosures</b>	<b>8</b>

Cover: Sami, Cochlear™ Nucleus® System recipient



# About Cochlear

Cochlear has been the global leader in implantable hearing solutions for over 40 years, providing a range of implants and sound processor upgrades that deliver a lifetime of hearing outcomes.

Cochlear commenced operations in 1981 as part of the Nucleus group and in 1995 listed on the Australian Securities Exchange. Today, it is a Top 40 listed Australian company with a market capitalisation of over A\$20 billion.

Our goal is to deliver value by helping more people to hear, which contributes to building a healthier and more productive society. Our strategy is focused on improving awareness of and access to implantable hearing solutions for people indicated for our products.

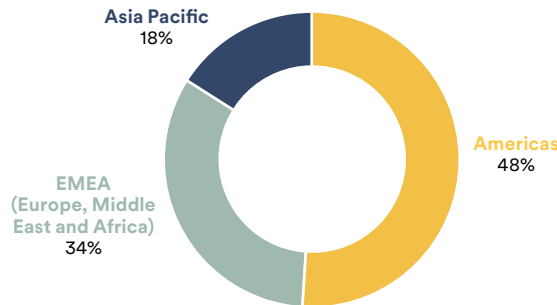
We are pioneers and global leaders in the development, manufacture and commercialisation of implantable hearing solutions, collaborating in over 100 research programs worldwide to further research into hearing loss.

We invest around 12% of sales revenue each year in research and development (R&D), with over \$3 billion invested since listing, and we have a portfolio of more than 2,300 patents and patent applications worldwide.

Over the past 40 years we helped over 750,000 people to hear with one – or two – of our implantable solutions. And we deliver a lifetime of hearing solutions for recipients, with sound processor upgrades and services to support prior generation products.

Our global headquarters are on the campus of Macquarie University in Sydney, with regional offices in Asia Pacific, Europe and the Americas. We have a global workforce of over 5,500 employees and a wide geographical reach, selling in over 180 countries, with employees based in over 50 countries.

## Revenue by region



## Business segments

### Cochlear Implants\*

**62%** Cochlear implant systems

### Services\*

**26%** Sound processor upgrades, accessories and other

### Acoustics\*

**12%** Bone conduction systems and sound processor upgrades

\* Based on sales revenue (FY25) ^Nucleus® Profile™ Plus Series implant cumulative survival percentage within six years



# Tax strategy and governance

## Approach to risk management and governance

We operate in a highly regulated global industry in the area of implantable hearing solutions. We must ensure we enter into transactions in a way that does not inhibit our ability to design, develop, manufacture and distribute products globally and which also maintains our reputation with regulators and governments in the countries in which we operate.

The Audit and Risk Committee have approved a Tax Risk Management and Governance Framework which reflects the tax risk strategy and management controls relating to tax risk management and governance.

Global tax and finance teams work together to identify, assess, prioritise and manage global tax risks, with key global tax risks identified escalated to the Vice President Global Tax and Treasury who is a direct report of, and identifies global tax risks to, the Chief Financial Officer.

Key global tax matters are reported to the Audit and Risk Committee on a regular basis and, where appropriate, matters are reported through to the full Board.

Publication of this statement is regarded as satisfying the statutory obligation under Paragraph 19, Schedule 19, Finance Act 2016 (UK) which prescribes that the UK tax strategy must be published for UK entities of the Cochlear global group. The UK entities to which this strategy applies are Cochlear Europe Limited, Cochlear Research and Development Limited and Cochlear (UK) Limited.

## Attitude towards tax planning

Our attitude towards tax planning is to ensure that transactions and compliance activities undertaken in Australia and by subsidiaries overseas have consideration of the Tax Risk Management and Governance Framework. Where appropriate, we will engage external advisors on significant transactions and for review of compliance activities.

Cochlear together with its Australian subsidiaries has formed a tax consolidated group for Australian tax purposes with Cochlear Limited as the head company of the Australian tax consolidated group.

## Accepted level of risk in relation to taxation

The level of accepted risk in relation to taxation is to assess the risk appetite of a transaction or activity in accordance with the Tax Risk Management and Governance Framework.

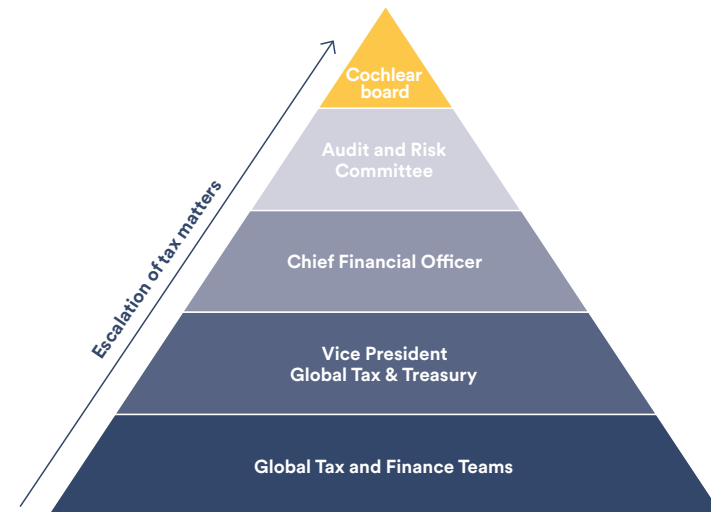
## Approach to engagement with global revenue authorities

Our approach to engagement with global revenue authorities including but not limited to the Australian Taxation Office, Internal Revenue Service and His Majesty’s Revenue and Customs, is to be compliant with tax legislation and fulfil all tax obligations in accordance with local tax laws and practice.

Our approach is to engage early with global revenue authorities on significant transactions and to ensure cooperative, collaborative and transparent communication.

In this respect, we have signed two Bilateral Advanced Pricing Agreements with the ATO; one with the National Tax Authority of Japan which has a term of 5 years, and one with the Internal Revenue Service of the United States which is currently being renewed. Dealings with the UK subsidiary based in London are conducted on similar principles but are not encapsulated in a formal Bilateral Advanced Pricing Agreement.

We support robust tax systems built on the principles of integrity, transparency and sustainability and engage in policy development and consultation both directly and via local taxpayer and industry associations.





## International related party dealings

Cochlear Limited is the ultimate parent entity of the Cochlear group. Our global headquarters is on campus at Macquarie University in Sydney, Australia, with regional distributors in Asia Pacific, EMEA and the Americas.

As the global manufacturer and developer of implantable hearing devices, we undertake the majority of manufacturing and R&D activities in Australia. We also conduct manufacturing and R&D activities with group entities located in Sweden, Malaysia, Belgium, France, the US and China.

With approximately 95% of revenue in FY25 generated from countries outside of Australia, our manufactured product is sold either directly or through regional distributors located in the UK, US and Panama and also through distributors located in Asia Pacific.

A summary of our international related party dealings is provided below. All dealings between related parties within the Cochlear group are priced on an arm's length basis in accordance with global transfer pricing laws and Organisation for Economic Co-operation and Development (OECD) guidelines:

- **Sale of product and services** - we have regional distributors located in the UK, US and Panama as well as other distributors located across Asia Pacific who purchase product directly from Cochlear for ultimate sale in their regions.
- **R&D** - we have a global innovation network with over 600 R&D employees across the globe. Primary R&D is co-located with the Australian Hearing Hub in Sydney, with the Cochlear Technology Centre in Belgium focused on advanced innovation and an acoustics and software hub in Sweden. There are also R&D capabilities with our subsidiaries in Malaysia, the US and France.
- **Manufacturing** - we manufacture across six sites globally. We have three sites in Australia Australia - Macquarie University and Lane Cove in New South Wales, and Brisbane in Queensland and we have contract manufacturing arrangements with our subsidiaries in Sweden, Malaysia and China. There is considerable know-how associated with this specialised manufacture.
- **Repairs** - we operate a repair centre in Malaysia. This entity provides testing, diagnostic and repair of sound processors, logistic activities including packing and shipping, scrapping of devices and related administrative tasks for Cochlear group entities globally.
- **Shared Service Centres** - we operate Shared Service Centres in Malaysia and Panama. These centres provide support to Cochlear group entities such as customer order entry, service request entry, registration, invoicing, user acceptance testing, customer account set up and maintenance. The centre in Malaysia also provides IT support services to the group.
- **Insurance premiums** - we have a captive insurance company in Singapore. It provides captive insurance services to subsidiaries in the Americas, EMEA and Asia Pacific. The captive insurance company is managed by an independent third-party insurance broker.
- **Financing** - we have funding facilities from external sources. Cochlear provides funding to some of its subsidiaries through of intercompany loans and equity financing.

The following table provides a summary of the nature of activities undertaken by subsidiaries incorporated, and branches located, in jurisdictions outside of Australia:

Country	International related party dealing
Belgium	Service provider (contract R&D)
Canada	Distributor of Cochlear products Service provider (application hosting, engineering and contract R&D)
China <sup>1</sup>	Distributor of Cochlear products Service provider (contract manufacturing)
France	Service provider (contract R&D)
Hong Kong <sup>1</sup>	Distributor of Cochlear products
India <sup>1</sup>	Distributor of Cochlear products
Japan	Distributor of Cochlear products
Korea <sup>1</sup>	Distributor of Cochlear products
Malaysia <sup>1</sup>	Shared services provider (contract manufacturing and R&D, repair centre, IT support services, customer service admin)
New Zealand	Distributor of Cochlear products
Panama <sup>1</sup>	Regional distributor for Latin America Shared services provider (customer service admin)
Singapore <sup>1,2</sup>	Distributor of Cochlear products Captive insurance company
Sweden	Service provider (contract manufacturing, marketing and R&D)
Taiwan <sup>1</sup>	Sales support for Cochlear products
Thailand <sup>1</sup>	Sales support for Cochlear products
United Kingdom	Regional distributor for EMEA
United States	Regional distributor for North America Service provider (contract R&D)

Note 1 – The subsidiary companies in these countries are treated as Controlled Foreign Companies for Australian income tax purposes and are subject to tax at the Australian corporate tax rate of 30% on any profits generated from activities between the subsidiaries and Cochlear.

Note 2 – Singapore includes a registered branch of Cochlear Limited.



# Income taxes disclosed in the Annual Report

The income tax expense disclosed in the Annual Report is calculated based on International Financial Reporting Standards (IFRS). In any one income year there may be a difference between the income tax expense calculated in the Annual Report to the total cash taxes paid to a relevant taxation authority during that same income year. This is due to a number of factors such as the timing of corporate tax instalment payments made to the relevant tax authorities, differences between accounting and tax treatments and whether any tax losses are incurred or utilised during the year.

We calculate the Effective Tax Rate (ETR) as income tax expense divided by accounting profit before income tax.

Provided below is the calculation of the income tax expense for Cochlear and its Australian operations showing the impact of adjustments to the income tax expense on the calculation of the ETR and a reconciliation of income tax expense to cash tax paid.

All amounts are presented in Australian dollars (AUD).

## Reconciliation of accounting profit to income tax expense

	2025 \$m	2025 ETR	2024 \$m	2024 ETR
<b>Profit before income tax</b>	<b>518.5</b>		<b>484.8</b>	
Tax at the Australian tax rate of 30% (2024: 30%)	155.5	30.0%	145.4	30.0%
<b>Add/(less) adjustments for:</b>				
Research and development allowances	(23.1)	(4.4%)	(21.9)	(4.5%)
Net (non-assessable)/non-deductible items	(0.4)	(0.1%)	4.8	1.0%
Effects of tax rates in foreign jurisdictions	(4.0)	(0.8%)	(5.4)	(1.1%)
	<b>128.0</b>	<b>24.7%</b>	<b>122.9</b>	<b>25.4%</b>
Integration costs	–	0.0%	7.1	1.5%
Adjustment for prior years	1.6	0.3%	(2.0)	(0.5%)
<b>Income tax expense on profit before income tax</b>	<b>129.6</b>	<b>25.0%</b>	<b>128.0</b>	<b>26.4%</b>



## Reconciliation of income tax expense to cash tax paid

	2025 \$m	2024 \$m
<b>Income tax expense on profit before income tax</b>	<b>129.6</b>	<b>128.0</b>
Timing differences recognised in deferred tax	38.6	13.7
Net utilisation of tax losses recognised in deferred tax	–	(0.9)
Current year tax instalments (payable)/receivable next year	(21.7)	(9.4)
Prior year instalments paid/(received) this year	9.5	0.1
<b>Cash taxes paid as per statement of cash flows</b>	<b>156.0</b>	<b>131.5</b>

## International tax reform

The Australian government, and several of the countries in which Cochlear operates, have adopted the Global Anti-Base Erosion Model Rules (Pillar Two) (GloBE Rules) with legislation that implements the framework of the rules including a global and domestic minimum tax. The rules apply to Cochlear from 1 July 2024.

There is no material financial impact on the current tax expense disclosed in the 2025 Annual Report as a result of the Pillar Two rules.

## Tax residency

The tax residency of Cochlear and its subsidiaries are included in the Consolidated Entity Disclosure Statement (CEDs) in our 2025 Annual Report. Based on the ATO's public guidance in Taxation Ruling TR2018/5 and guidance in foreign jurisdictions, all of Cochlear's subsidiary entities are tax resident in the country of their incorporation.

The CEDs also sets out that Cochlear Deutschland GmbH & Co KG, a partnership formed in Germany, has a tax jurisdiction of Germany as well as Australia as its partners are Australian residents.

## Reconciliation of accounting profit to income tax expense for the Australian tax consolidated group

	2025 \$m	2025 ETR	2024 \$m	2024 ETR
Profit before income tax (excluding dividends from wholly owned foreign subsidiaries)	423.7		355.5	
Dividends from wholly owned foreign subsidiaries	54.0		87.3	
<b>Profit before income tax</b>	<b>477.7</b>		<b>442.8</b>	
Income tax expense using the Company's domestic tax rate of 30%	143.3	30.0%	132.8	30.0%
<b>Add/(less) adjustments for:</b>				
Research and development allowances	(21.6)	(4.5%)	(20.2)	(4.6%)
Net (non-assessable)/non-deductible items	(5.3)	(1.1%)	4.2	0.9%
Controlled foreign company income	6.0	1.2%	1.5	0.3%
Exempt foreign sourced dividends from wholly owned subsidiaries	(16.2)	(3.3%)	(26.2)	(5.9%)
	<b>106.2</b>	<b>22.3%</b>	<b>92.1</b>	<b>20.7%</b>
Integration costs	–	0.0%	1.1	0.3%
Adjustment for prior years	2.2	0.4%	(0.3)	0.1%
<b>Income tax expense on Australian profit before income tax</b>	<b>108.4</b>	<b>22.7%</b>	<b>93.5</b>	<b>21.1%</b>



# Tax contribution summary

In 2025, we made the following cash tax payments to Australian and overseas tax authorities:

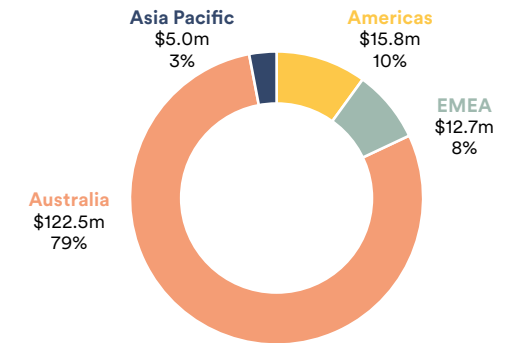
	Australia \$m	Americas \$m	EMEA \$m	Asia Pacific \$m	Total Group \$m	2024 (Restated) <sup>1</sup> \$m
<b>Taxes paid by Cochlear</b>						
Corporate income tax	122.5	15.8	12.7	5.0	156.0	131.5
Employer/payroll taxes	22.0	12.5	13.7	0.5	48.7	43.5
Fringe benefits taxes	2.8	0.2	0.1	-	3.1	0.6
<b>Taxes paid by Cochlear</b>	<b>147.3</b>	<b>28.5</b>	<b>26.5</b>	<b>5.5</b>	<b>207.8</b>	<b>175.6</b>
<b>Taxes collected by Cochlear</b>						
Salary withholding (PAYG/PAYE)	100.1	42.8	28.8	7.8	179.5	168.5
Net GST/VAT (refunded)/paid	(25.2)	3.0	26.1	8.5	12.4	19.6
Net sales/consumption taxes	-	3.4	0.6	-	4.0	1.7
Withholding taxes on interest and royalties	0.3	0.2	-	1.6	2.1	0.3
<b>Taxes collected by Cochlear</b>	<b>75.2</b>	<b>49.4</b>	<b>55.5</b>	<b>17.9</b>	<b>198.0</b>	<b>190.1</b>
<b>Total taxes paid and collected</b>	<b>222.5</b>	<b>77.9</b>	<b>82.0</b>	<b>23.4</b>	<b>405.8</b>	<b>365.7</b>
2024 (Restated) <sup>1</sup>	178.4	74.6	88.8	23.9	365.7	-

Note 1 – Comparative information has been restated to include import VAT paid in EMEA and Asia Pacific.

## Corporate income tax

Corporate income taxes paid in Australia continue to represent the majority of total corporate income taxes paid by the Cochlear Group.

### Total corporate income tax paid 2025





# ATO tax transparency disclosures

## Report of entity tax information

In 2024, the Australian Taxation Office (ATO) published the following taxation information from the Australian tax consolidated group income tax return for 2023:

### 2023

Total income	\$1,283,519,228
Taxable income	\$436,051,723
Tax payable	\$64,429,580

Taxable income is calculated based on accounting profit adjusted for allowable tax timing and tax permanent differences as provided for in the Australian tax law. Tax payable is then calculated at the corporate income tax rate (30%) of taxable income, reduced by available tax offsets. For Cochlear, the primary tax offset which reduces the tax payable amount is the R&D tax offset.

## R&D expenditure claimed

The ATO will publish the following R&D expenditure claimed in the Australian tax consolidated group income tax return for 2023:

### 2023

Total expenditure on R&D	\$136,678,581
--------------------------	---------------

Total expenditure on R&D represents both expensed (\$127.0m) and capitalised (\$9.7m) R&D.

Provided below is a summary of Cochlear's tax transparency information. Additional information has been provided in relation to the ATO tax transparency disclosures to demonstrate how the final tax payable amount is calculated after the R&D tax offset has been applied.

<b>Cochlear Australian tax consolidated group</b>	<b>2024 A\$m</b>	<b>2023 A\$m</b>
<b>Total income published</b>	<b>1,577.9</b>	<b>1,283.5</b>
Taxable income	582.0	436.1
Tax payable	102.9	64.4
<b>Application of R&amp;D tax offset to tax transparency disclosures:</b>		
Taxable income	447.3	309.1
R&D expense (100% add back)	134.7	127.0
<b>Taxable income published</b>	<b>582.0</b>	<b>436.1</b>
Tax payable (@30%)	174.6	130.8
R&D tax offset	(65.9)	(62.0)
Other tax offsets	(5.8)	(4.4)
<b>Tax payable published</b>	<b>102.9</b>	<b>64.4</b>

# Hear now. And always

Cochlear is dedicated to helping people with moderate to profound hearing loss experience a world full of hearing. As the global leader in implantable hearing solutions, we have helped more than 750,000 people of all ages to hear and connect with life's opportunities.

We aim to give people the best lifelong hearing experience and access to next generation technologies. We collaborate with leading clinical, research and support networks to advance hearing science and improve care.

That's why more people choose Cochlear than any other hearing implant company.

 Cochlear Ltd (ABN 96 002 618 073) 1 University Avenue, Macquarie University, NSW 2109, Australia T: +61 2 9428 6555

[www.cochlear.com](http://www.cochlear.com)

Please seek advice from your health professional about treatments for hearing loss. Outcomes may vary, and your health professional will advise you about the factors which could affect your outcome. Always follow the directions for use. Not all products are available in all countries. Please contact your local Cochlear representative for product information.

ACE, Advance Off-Stylet, AOS, Ardium, AutoNRT, Autosensitivity, Baha, Baha SoftWear, BCDrive, Beam, Bring Back the Beat, Button, Carina, Cochlear, 科利耳, コクレア, 코클리어, Cochlear SoftWear, Contour, コントウア, Contour Advance, Custom Sound, DermaLock, Freedom, Hear now. And always, Hugfit, Human Design, Hybrid, Invisible Hearing, Kanso, LowPro, MET, MP3000, myCochlear, mySmartSound, NRT, Nucleus, Osia, Outcome Focused Fitting, Off-Stylet, Piezo Power, Profile, Slimline, SmartSound, Softip, SoundArc, True Wireless, the elliptical logo, Vistafix, Whisper, WindShield and Xidium are either trademarks or registered trademarks of the Cochlear group of companies.

© Cochlear Limited 2025. D2376782 V1 2025-09