

ASX ANNOUNCEMENT

1 September 2025

WEST ARUNTA GEOPHYSICAL SURVEYS COMMENCED

Highlights

- Ground-based gravity and passive seismic surveys underway at the West Arunta Project
- 160km² survey area to infill existing gravity data across areas of interest with complementary passive seismic data to be collected
- The Geological Survey of Western Australia has also commenced a large-scale airborne magnetic and radiometric survey over the West Arunta region
- Outcomes of the geophysical surveys to support follow-up exploration and potential drilling

Tali Resources Ltd (ASX: TR2) (**Tali or the Company**) is pleased to advise that it has commenced ground-based infill gravity and passive seismic surveys over a 160km² area at the West Arunta Project.

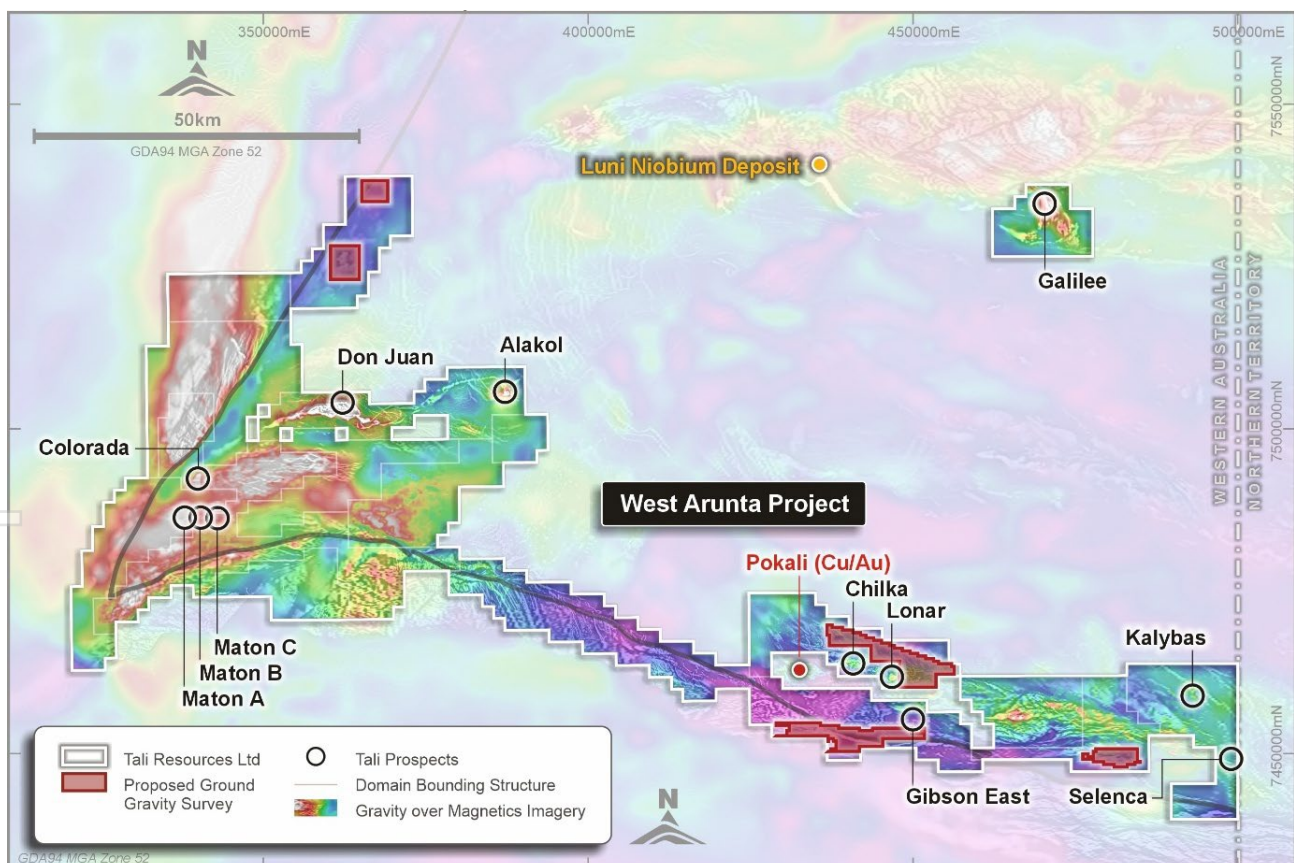


Figure 1. West Arunta Project granted tenements, prospects and proposed geophysical survey areas¹
Filtered gravity over filtered magnetics

For personal use only

Tali's Managing Director, Rhys Bradley, commented:

"Geophysical methods, particularly when integrated, have been the most effective primary exploration tools in the West Arunta region to date. Gravity and passive seismic surveys have successfully been used by other explorers in the region to both see through the cover sequence and provide estimates on the cover thickness, identifying anomalies that have led to discoveries.

"The objective of these surveys is to collect additional data and combine it with existing information to identify and rank large-scale features to examine. The survey areas of interest are adjacent to Chilka, Lonar and Gibson East, as well as three other areas of interest that have been identified from existing regional scale geophysical datasets.

"We are appreciative of the extensive airborne magnetic and radiometric survey being undertaken by the Geological Survey of Western Australia (GSWA) over the West Arunta region. The GSWA survey is underway, covers the entirety of Tali's tenure and will be made publicly available at no cost²."

Technical Discussion

Gravity and Passive Seismic Surveys

Geophysical data collection is the primary exploration tool for identifying large-scale anomalies under the extensive but generally thin cover sequences that are seen across most of the West Arunta region. Gravity surveys accurately measure and record gravity strength, correlated with density. Detailed surveys may outline variations or contrasts in the density of the subsurface. Density contrasts are then used to infer the presence of different rock types and may detect anomalies that could relate to various mineral deposit styles. Passive seismic surveys can be used to detect and map the interpreted depth to bedrock.

Planned programs of ground-based gravity and passive seismic surveys have commenced over a 160km² area as shown in Figure 1. Within tenement E80/6027, the survey will cover areas adjacent to the Chilka and Lonar prospects where the Company recently commenced drilling³. Two additional survey areas to the south and south-east of the Chilka and Lonar prospects within tenements E80/5333 and E80/5997 will be surveyed where there is currently sparse data coverage. The two north-western most areas, within tenement E80/6033 were identified as areas of interest based on regional scale magnetic data. There has been no previous known exploration activity completed in this area and passive seismic lines are also planned to provide more information on the depth to basement.

The gravity survey is planned to infill areas of interest to approximately 400m by 400m spacing, which is intended to provide sufficient data density to identify any significant features and plan follow-up exploration. The existing gravity spacing in the areas of the surveys being undertaken is regional-scale at 2.5km by 2.5km.

GSWA Airborne Magnetic and Radiometric Surveys²

The GSWA has recently commenced airborne magnetic and radiometric geophysical surveys across the West Arunta region. The survey area covers all of Tali's tenure. The datasets and reports are to be made available at no cost. The survey has been contracted to a number of specialist providers who will collect data on a 100m line spacing on north-south line orientation, which is expected to significantly improve the quality of the available magnetic data for Tali and provide excellent uniform data coverage for the region.

1. Refer to ASX announcement dated 28 July 2025

2. <https://geodownloads.dmp.wa.gov.au/downloads/geophysics/72871/>

3. Refer to ASX announcement dated 4 August 2025

ENDS

This ASX Announcement is authorised by the Board of Tali Resources Ltd.

For further information please contact:

Investors

Rhys Bradley

Managing Director

T: +61 8 6282 2700

E: rbradley@taliresources.com.au

Media

Michael Vaughan

Fivemark Partners

T: +61 422 602 720

E: michael.vaughan@fivemark.com.au

Or visit our website at www.taliresources.com.au

This announcement incorporates the results from exploration contained in Tali's ASX announcements up until 29 August 2025. The Company confirms that it is not aware of any new information or data that materially affects the information included in these announcements. All material assumptions and technical parameters underpinning these announcements continue to apply and have not materially changed.

Disclaimer

No representation or warranty, express or implied, is made by the Company that the material contained in this announcement will be achieved or proved correct. Except for statutory liability which cannot be excluded, each of the Company, its directors, officers, employees, advisors and agents expressly disclaims any responsibility for the accuracy, fairness, sufficiency or completeness of the material contained in this announcement and excludes all liability whatsoever (including in negligence) for any loss or damage which may be suffered by any person as a consequence of any information in this announcement or any effort or omission therefrom. The Company will not update or keep current the information contained in this announcement or to correct any inaccuracy or omission which may become apparent, or to furnish any person with any further information. Any opinions expressed in the announcement are subject to change without notice.

About Tali

Tali Resources Ltd (**Tali**) is an Australian exploration company that is focused on exploring for Tier 1 mineral deposits in Western Australia.

Tali is actively advancing its flagship West Arunta Project where it holds a large, dominant tenure position in one of Australia’s most exciting emerging mineral regions. Exploration is being undertaken using a multi-faceted and systematic approach to explore for several different styles of mineralisation. The Company’s exploration activities are led by an experienced leadership team with a strong track record of discovery success.

Forward-Looking Statements

This ASX announcement may contain certain “forward-looking statements” which may be based on forward-looking information that are subject to a number of known and unknown risks, uncertainties, and other factors that may cause actual results to differ materially from those presented here. Where the Company expresses or implies an expectation or belief as to future events or results, such expectation or belief is expressed in good faith and believed to have a reasonable basis. For a more detailed discussion of such risks and other factors, see the Company’s Prospectus and Annual Reports, as well as the Company’s other ASX announcements. Readers should not place undue reliance on forward-looking information. The Company does not undertake any obligation to release publicly any revisions to any forward-looking statement to reflect events or circumstances after the date of this ASX announcement, or to reflect the occurrence of unanticipated events, except as may be required under applicable securities laws.

