

ASX Announcement 1st September 2025

Gossanous Copper Identified Above Priority Conductor; Scale and Confidence Build

Key Highlights

- **VTEM Conductor 1:** In-situ gossanous material identified, returning up to **8% Cu (XRF¹)**, directly above the centre of the large VTEM conductor.
- **VTEM Conductor 2:** Field mapping shows presence of a **distinctive plant species** that to date has only been observed in association with the Oonagalabi Formation and **copper-zinc mineralisation**, strengthening confidence in a sulphide source below.
- **Bomb Diggity Cluster:** Ground truthing reveals **new exposures of copper** mineralisation within outcropping Oonagalabi Formation, extending potential strike length by **a further 1km**.
- **Final VTEM data received:** Multiple **new targets extend north and south** of Oonagalabi, indicating the mineralised system has the potential to be a lot larger and more laterally extensive than previously recognised.
- **Access has been de-risked:** LMS expect to have ground preparation machinery into **VTEM 1, VTEM 2 and the Bomb Diggity cluster** early September, enabling a multi-target RC program.

Litchfield Minerals Limited (ASX: LMS, “Litchfield” or “the Company”) is pleased to report highly encouraging results from ground-truthing activities at its **Oonagalabi Project**, following the recently announced VTEM survey², which defined 14 Priority 1 conductors (LMS ASX Announcement 21 August 2025).

General Commentary

The VTEM program, announced August 21st, 2025, had materially expanded the prospective footprint at Oonagalabi. The previously drilled outcrop sits within a mildly conductive corridor that remains mineralised, while stronger conductors north and south offer multiple, higher-priority sulphide targets (**Figure 1**).

Several high-priority anomalies display responses consistent with sulphides. Three of the four priority conductors that were ground-truthed, display mineralisation indicators, including both physical copper mineralisation and geobotanical (plant) indicators known in this area.

These new data points strengthen our working view that the previously drilled exposed Oonagalabi outcrop may be the distal ‘smoke’ rather than the core of the system. Reconnaissance mapping during

¹ *Disclaimer: XRF results are indicative only and are not a substitute for laboratory assays.*

² *ASX Announcement 21/08/2025 - VTEM Survey Uncovers Multiple High Priority Sulphide Targets*

VTEM ground-truthing has extended the outcropping mineralised Oonagalabi Formation by a further 1km.

Stronger alteration above a weaker VTEM conductor at Bomb Diggity indicates that there is potentially a mineral system which is larger than historically recognised and not constrained by earlier fault interpretations. We are potentially moving towards the core with the Phase 2 RC drilling program.

Given the scale and complexity of Oonagalabi, a systematic drilling program is required to test the potential of the full system. To test these targets properly, we'll need strong Shareholder support for the SPP as that will enable us to drill comprehensively and give this system the exploration attention it deserves.

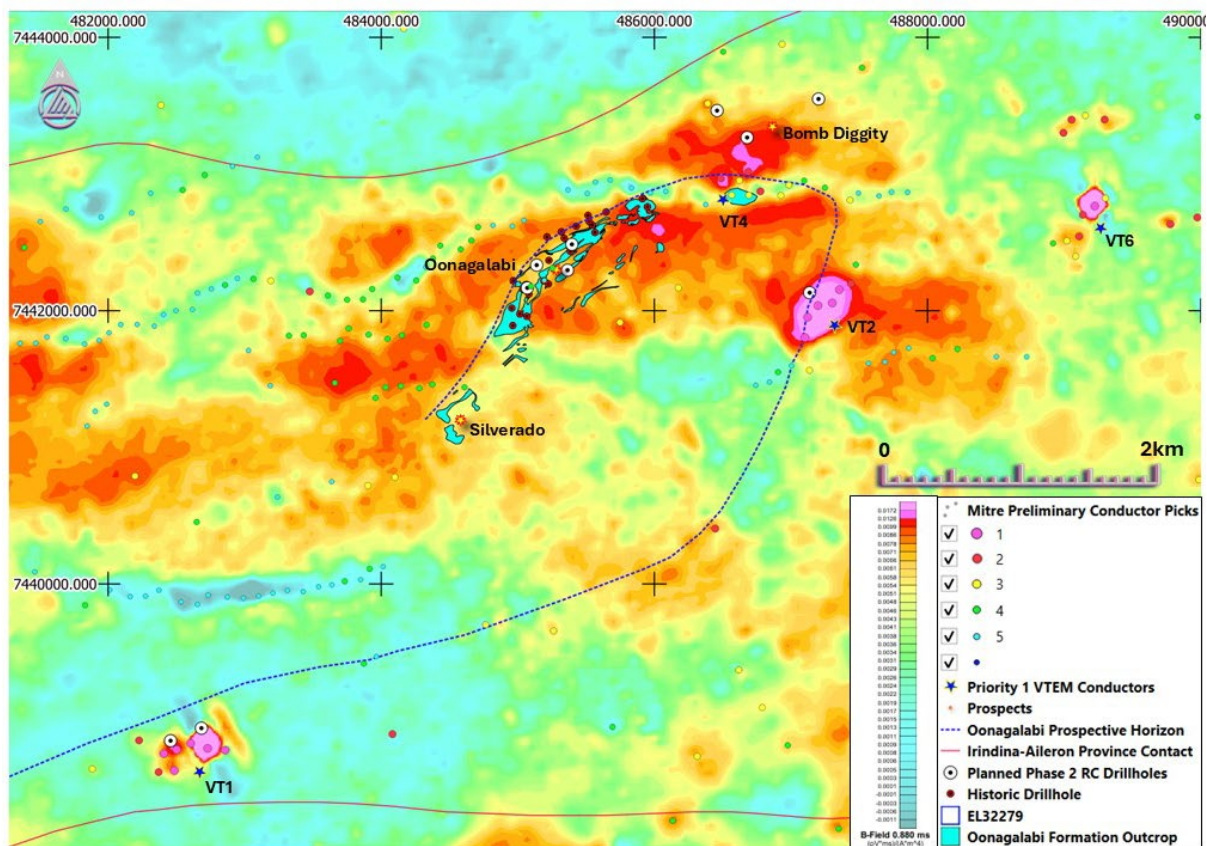


Figure 1. Oonagalabi VTEM BFz30 conductivity image showing the Priority 1 conductors, preliminary anomaly picks, interpreted prospective horizon, historic drillholes and proposed Phase 2 RC holes.

Managing Director, Matt Pustahya, commented:

“Ground-truthing and final VTEM data materially lift our conviction in Oonagalabi as a potentially large, significant mineralised system. We’ve now confirmed gossanous copper directly above the VTEM 1 high-priority conductor, mapped fresh exposures of the mineralised Oonagalabi Formation with stronger alteration at the Bomb Diggity conductive cluster, and logged multiple Priority 1 conductors with clear indicators that fit a sulphide model. The only way to prove this is to drill, and that’s exactly what we’re preparing to do.”

For personal use only

This is a big, complex system and it deserves a proper methodical test across several high-priority targets. Our Share Purchase Plan was deliberately structured as a 'thank you' to shareholders who've backed us through the past 18 months; this support is crucial and will help to directly fund a more comprehensive program than our current cash balance alone would allow. With successful execution of the plan we've mapped out, the next quarter has the potential to be genuinely company-defining."

Conductor VT1 – Gossanous Copper Directly Above VTEM Anomaly

At the 500m long, highly conductive VT1 target, gossanous copper occurs directly above the conductor plate, with handheld XRF up to **8% Cu*** (assays expected within 4 – 6 weeks). Gossan forms from the oxidation of fresh sulphides and this strong surface expression is consistent with sulphides at depth.



Figure 2. Gossan outcrop (482389E, 7438704N) showing classic ex-sulphide boxwork texture identified at VT1 immediately along strike from outcropping Oonagalabi Formation marble with oxidised copper mineralisation present.

Based on visual estimates, the gossan comprises massive iron oxide (90%), quartz (8%), disseminated copper silicate (2% chrysocolla) and trace disseminated fresh chalcopyrite.

Mapping also identified marble, calc-silicate and massive garnet-amphibole-quartz typical of the mineralised Oonagalabi Formation. This area located 8km beyond previous work along the prospective horizon, points to a much larger system (**Figure 2**).

Conductor VT2 – Deep Sulphide Target Strengthened

VT2 comprises a large, high-conductance VTEM plate modelled at approximately 150m depth and extending ~500m along strike. While no surface copper was observed, two independent vectors lift confidence: (1) the “Zinc Bush” termed by Litchfield Minerals, a geobotanical indicator, seen by our team only over Cu–Zn mineralisation at the Oonagalabi prospect, and (2) confirmation that the area sits within the mineralised horizon. The scale and conductance of the plate, together with these vectors, elevate VT2 as a high-priority blind sulphide target.

Bomb Diggity Cluster – Scale Expansion

At the Bomb Diggity cluster of VTEM conductors, ground truthing has confirmed the presence of exposed Oonagalabi Formation that has not been previously identified or mapped (**Figure 3**). This observation has added a further **1km of strike** to the Oonagalabi system. We estimate the outcropping mineralisation comprises massive anthophyllite (98%), malachite and disseminated chalcopyrite (2%).

This points to a system much larger than historically recognised and not constrained by earlier fault interpretations. Stronger alteration than the previously drilled main outcrop and surface copper support this corridor as a potential major structural and mineralising control, coincident with high magnetic and gravity features.



Figure 3. Outcropping anthophyllite – malachite mineralised Oonagalabi Formation found at one of the weaker VTEM anomalies at the Bomb Diggity cluster (486646E, 7442849N).

VTEM Conductor 6

The VTEM Conductor VT6 appears to be a blind target. Importantly, we also noted the ‘Zinc Bush’ over the conductor, however, this area is on top of the steepest, highest terrain in the area (1,130m RL), so we are unlikely to drill test this site until we first have success lower down at the newly identified targets mentioned above.

Access / Drill-readiness

Key to any drilling program is logistics and access tracks, which the recent field work focussed on dr-risking. We now expect to get earth moving machinery into VTEM 1, VTEM 2 and the Bomb Diggity cluster in early September, enabling a multi-target RC program, subject to funding.

Project Refresher- Lease EL32279

Oonagalabi is a large, mineralised outcrop (+3km) which has drilled significant copper, zinc intercepts, and sits in a highly prospective structural setting, northeast of Alice Springs where deep crustal architecture and continental-scale gravity lineaments intersect, features commonly associated with Tier-1 systems (**Figure 4**).

Geoscience Australia's IOCG prospectivity mapping classifies the broader Oonagalabi area as having moderate IOCG potential, reflecting favourable metal sources, fluid pathways and depositional traps near the Irindina–Aileron Province boundary (Cloutier et al 2025., Iron oxide copper–gold potential of Australia using a hybrid data- and knowledge-driven approach and its implications for the formation of IOCG mineral systems, Ore Geology Reviews Volume 185, October 2025, 106802). This combination of architecture and position is a key reason we're investing exploration dollars here.

Within this corridor, mineralisation at Oonagalabi is focused in the Oonagalabi Formation (marble, calc-silicates, garnet–quartzite). Our recent geophysics and mapping highlight multiple conductive/chargeable targets along this prospective horizon, consistent with a large, mineralised footprint where high-grade lenses may be focused by structures and intrusive-related alteration.

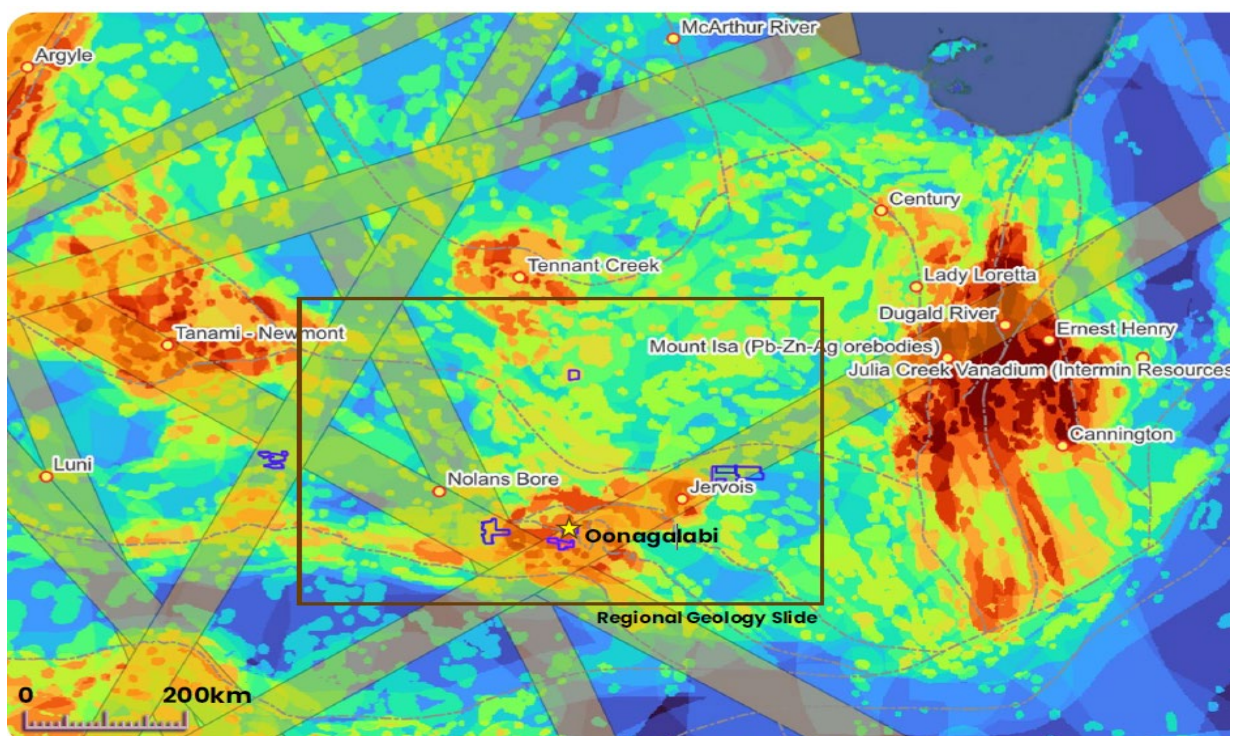


Figure 4. Overlay of the CSIRO IOCG prospectivity map and Continental scale gravity lineaments, highlighting Oonagalabi's location in this structural framework

For personal use only

Bomb Diggity target Explained

Bomb Diggity is the nickname for a large +1km long and deep, 'blind', pipe-like magnetic body located ~900m northeast of the main Oonagalabi outcrop, positioned on the Irindina–Aileron tectonic contact (Figure 5).

Ground gravity has defined three coincident density anomalies adjacent to this magnetic feature, together indicating a potentially significant intrusive/alteration centre that could act as a heat/metal/fluid source for Oonagalabi (or represent a younger, related event).

This thesis is supported by recent drilling at Oonagalabi of a modelled magnetic structure we interpret as related to Bomb Diggity. This hole intersected magnetite–Bi–Au–Ag mineralisation consistent with a proximal intrusive-related overprint, appearing different to other mineralisation drilled in the Oonagalabi formation.

OGRC002 returned 15 m @ 0.45 g/t Au, 0.17% Bi, 1.09 g/t Ag, including 1 m @ 2.86 g/t Au, 0.84% Bi and 1 m @ 1.62 g/t Au, 0.58% Bi, which we interpret as vectors toward the Bomb Diggity source.

The presence of VTEM conductors beside the Bomb Diggity magnetic body strengthens the interpretation that this structure could host sulphide mineralisation; if confirmed by drilling, it would indicate meaningful tonnage potential.

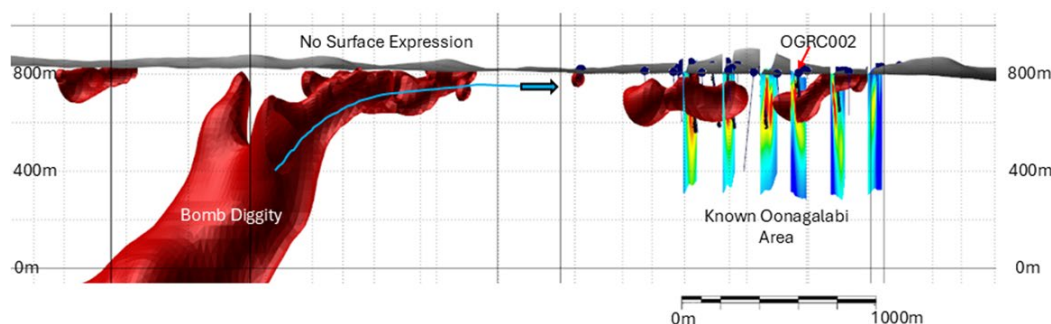


Figure 5. Shows the “Bomb Diggity magnetic anomaly” in red polygons ($+>0.022$ mesh), OGRC002 highlights where the company intercepted the gold and bismuth in a magnetic finger, which is interpreted as being part of, and distal to, the Bomb Diggity magnetic anomaly. The blue line indicates the interpreted fluid flow direction from Bomb Diggity into Oonagalabi.

Next Steps

- Mobilisation of earthmoving equipment in early September to prepare drill pads and access tracks.
- RC drilling program to commence mid-September, starting at the Bomb Diggity cluster, then the selected Priority 1 conductors followed by testing of potential Au-Bi-Ag zones at Oonagalabi.
- Case all VTEM RC holes for down-hole EM to refine conductor geometry and vectors to sulphides.
- Ongoing updates as results from drilling and assays become available.

Cautionary Statement

This announcement contains forward-looking statements that involve known and unknown risks, uncertainties, and other factors that may cause actual results, performance, or achievements to differ materially from those expressed or implied. Such statements include but are not limited to, interpretations of geophysical data, planned exploration activities, and potential mineralisation outcomes. Visual estimates of mineral abundance should never be considered a proxy or substitute for laboratory analyses where concentrations of grades are the factors of principal economic interest. Visual estimates also potentially provide no information regarding impurities or deleterious physical properties relevant to valuation. Forward-looking statements are based on Litchfield Minerals Limited's current expectations, beliefs, and assumptions, which are subject to change in light of new information, future events, and market conditions. While the Company believes that such expectations and assumptions are reasonable, they are inherently subject to business, geological, regulatory, and operational risks. Further work, including drilling, is required to determine the economic significance of any anomalies identified. Investors should not place undue reliance on forward-looking statements. Litchfield Minerals Limited disclaims any obligation to update or revise any forward-looking statements to reflect events or circumstances after the date of this announcement, except as required by law.

About Litchfield Minerals

Litchfield Minerals is a critical mineral explorer, primarily searching for base metals and uranium out of the Northern Territory of Australia. Our mission is to be a pioneering copper exploration company committed to delivering cost-effective, innovative and sustainable exploration solutions. We aim to unlock the full potential of copper and other mineral resources while minimising environmental impact, ensuring the longevity and affordability of this essential metal for future generations. We are dedicated to involving cutting-edge technology, responsible practices and stakeholder collaboration drives us to continuously redefine the industry standards and deliver value to our investors, communities and the world.

The announcement has been approved by the Board of Directors.

For further information please contact:

Matthew Pustahya

Matthew@litchfieldminerals.com.au

Follow us on:



www.litchfieldminerals.com.au



https://twitter.com/Litchfield_LMS



<https://www.linkedin.com/company/litchfield-minerals-limited/>

Competent Person's Statement

The information in this announcement relates to Exploration Results and is based on, and fairly represents, information and supporting documentation compiled by Mr Russell Dow (MSc, BSc Hons Geology), a Competent Person who is a Member of the Australian Institute of Mining and Metallurgy (AUSIMM) and is a full-time employee of Litchfield Minerals Limited. Mr Dow has sufficient sampling experience that is relevant to the style of mineralisation and types of deposits under consideration and to the activity being undertaken to qualify as a Competent Person as defined in the 2012 Edition of the "Australasian Code for Reporting of Exploration Results, Mineral Resources and Ore Reserves" (JORC Code). Mr Dow consents to the inclusion in the Public Report of the matters based on their information in the form and context in which it appears. With regard to the Company's ASX Announcements referenced in the above Announcement, the Company is not aware of any new information or data that materially affects the information included in the Announcements.

For personal use only

JORC Code, 2012 Edition – Table 1 report

Section 1 Sampling Techniques and Data

(Criteria in this section apply to all succeeding sections.)

Criteria	JORC Code explanation	Commentary
Sampling techniques	<ul style="list-style-type: none"> • <i>Nature and quality of sampling (e.g. cut channels, random chips, or specific specialised industry standard measurement tools appropriate to the minerals under investigation, such as down hole gamma sondes, or handheld XRF instruments, etc). These examples should not be taken as limiting the broad meaning of sampling.</i> • <i>Include reference to measures taken to ensure sample representivity and the appropriate calibration of any measurement tools or systems used.</i> • <i>Aspects of the determination of mineralisation that are Material to the Public Report.</i> • <i>In cases where 'industry standard' work has been done this would be relatively simple (e.g. 'reverse circulation drilling was used to obtain 1 m samples from which 3 kg was pulverised to produce a 30 g charge for fire assay'). In other cases more explanation may be required, such as where</i> 	<p>The instruments and parameters used for the VTEM survey are as follow:</p> <ul style="list-style-type: none"> • The VTEM survey was flown by UTS Geophysics Pty. Ltd. • Heliborne electromagnetic data was acquired with VTEM™ Max transmitter frequency of 25Hz, loop diameter 35m and mean terrain clearance height of 35m. • Line spacing was 200m across the full survey area with the central 40% of the survey also flown at 100m. • Three-dimensional plate modelling of VTEM preliminary data was Kate Hine at Mitre Geophysics. • VTEM anomalies were modelled with industry standard Maxwell EM software – utilizing thin conductor plate scenarios for various, most relevant EM channel windows. VTEM final data was imported into Maxwell EM software using Geosoft/oasis database files. Resultant model scenarios for each of the five areas were exported to both

Criteria	JORC Code explanation	Commentary
	<p><i>there is coarse gold that has inherent sampling problems. Unusual commodities or mineralisation types (e.g. submarine nodules) may warrant disclosure of detailed information.</i></p>	<p>3D DFX and GIS plan view formats to aid follow-up ground EM optimization and consideration.</p> <ul style="list-style-type: none"> • Rock chip samples were collected by selecting multiple small chips from each outcrop to produce a representative sample. • The pXRF was used to assess multiple data points on each rock chip sample.
Drilling techniques	<ul style="list-style-type: none"> • <i>Drill type (e.g. core, reverse circulation, open-hole hammer, rotary air blast, auger, Bangka, sonic, etc) and details (e.g. core diameter, triple or standard tube, depth of diamond tails, face-sampling bit or other type, whether core is oriented and if so, by what method, etc).</i> 	<ul style="list-style-type: none"> • No new drilling is reported.
Drill sample recovery	<ul style="list-style-type: none"> • <i>Method of recording and assessing core and chip sample recoveries and results assessed.</i> • <i>Measures taken to maximise sample recovery and ensure representative nature of the samples.</i> • <i>Whether a relationship exists between sample recovery and grade and whether sample bias may have occurred due to preferential loss/gain of fine/coarse material.</i> 	<ul style="list-style-type: none"> • No new drilling is reported.
Logging	<ul style="list-style-type: none"> • <i>Whether core and chip samples have been geologically and geotechnically logged to a level of detail to support appropriate Mineral Resource estimation, mining studies and metallurgical studies.</i> 	<ul style="list-style-type: none"> • No new drilling is reported. • Detailed field notes were collected for each rock chip sample.

Criteria	JORC Code explanation	Commentary
	<ul style="list-style-type: none"> • Whether logging is qualitative or quantitative in nature. Core (or costean, channel, etc) photography. • The total length and percentage of the relevant intersections logged. 	
Sub-sampling techniques and sample preparation	<ul style="list-style-type: none"> • If core, whether cut or sawn and whether quarter, half or all core taken. • If non-core, whether riffled, tube sampled, rotary split, etc and whether sampled wet or dry. • For all sample types, the nature, quality and appropriateness of the sample preparation technique. • Quality control procedures adopted for all sub-sampling stages to maximise representivity of samples. • Measures taken to ensure that the sampling is representative of the in situ material collected, including for instance results for field duplicate/second-half sampling. • Whether sample sizes are appropriate to the grain size of the material being sampled. 	<ul style="list-style-type: none"> • No new drilling is reported. • No rock chip sub-sampling was conducted.
Quality of assay data and laboratory tests	<ul style="list-style-type: none"> • The nature, quality and appropriateness of the assaying and laboratory procedures used and whether the technique is considered partial or total. • For geophysical tools, spectrometers, handheld XRF instruments, etc, the parameters used in determining the analysis including instrument make and model, reading times, calibrations factors applied and their derivation, etc. 	<ul style="list-style-type: none"> • Transmitter loop diameter: 35m • Peak dipole moment – 700,000 NIA • Transmitter Pulse Width – 7ms • VTEM Max Receiver – Z, X coils (Y optional) • pXRF machine is calibrated regularly and field standards are used at the beginning and end of each sample run. XRF

Criteria	JORC Code explanation	Commentary
	<ul style="list-style-type: none"> <i>Nature of quality control procedures adopted (e.g. standards, blanks, duplicates, external laboratory checks) and whether acceptable levels of accuracy (i.e. lack of bias) and precision have been established.</i> 	<p>results are indicative only and are not a substitute for laboratory assays.</p>
Verification of sampling and assaying	<ul style="list-style-type: none"> <i>The verification of significant intersections by either independent or alternative company personnel.</i> <i>The use of twinned holes.</i> <i>Documentation of primary data, data entry procedures, data verification, data storage (physical and electronic) protocols.</i> <i>Discuss any adjustment to assay data.</i> 	<ul style="list-style-type: none"> Data detailed in this report has been reviewed and processed by Mitre Geophysics.
Location of data points	<ul style="list-style-type: none"> <i>Accuracy and quality of surveys used to locate drill holes (collar and down-hole surveys), trenches, mine workings and other locations used in Mineral Resource estimation.</i> <i>Specification of the grid system used.</i> <i>Quality and adequacy of topographic control.</i> 	<ul style="list-style-type: none"> The navigation system used was a UTS PC104 based navigation system utilizing a NovAtel WAAS (Wide Area Augmentation System) enabled GPS receiver, UTS navigate software, a full screen display with controls in front of the pilot to direct the flight and a NovAtel GPS antenna mounted on the helicopter tail. As many as 11 GPS and two WAAS satellites may be monitored at any one time. The positional accuracy or circular error probability (CEP) is 1.8m, with WAAS active, it is 1.0m. The co-ordinates of the block were set-up prior to the survey and the information was fed into the airborne navigation system. Altitude control used the FreeFlight Systems TRA-3000 radar altimeter with altitude range (40 to 2500ft), altitude

Criteria	JORC Code explanation	Commentary
		<p>accuracy (40 to 100 ft. ±5 ft., 100 to 500 ft. ±5%, 500 to 2500 ft. ±7%) and sample rate of 10Hz.</p> <ul style="list-style-type: none"> • Co-ordinates are in GDA94 datum, Zone 53. • A handheld GPS was used rock chip sample locations with an accuracy of ±3m.
Data spacing and distribution	<ul style="list-style-type: none"> • <i>Data spacing for reporting of Exploration Results.</i> • <i>Whether the data spacing and distribution is sufficient to establish the degree of geological and grade continuity appropriate for the Mineral Resource and Ore Reserve estimation procedure(s) and classifications applied.</i> • <i>Whether sample compositing has been applied.</i> 	<ul style="list-style-type: none"> • The full EL 32279 was flown at 200m line-spacing with a central 40% of the survey flown at 100m infill line-spacing.
Orientation of data in relation to geological structure	<ul style="list-style-type: none"> • <i>Whether the orientation of sampling achieves unbiased sampling of possible structures and the extent to which this is known, considering the deposit type.</i> • <i>If the relationship between the drilling orientation and the orientation of key mineralised structures is considered to have introduced a sampling bias, this should be assessed and reported if material.</i> 	<ul style="list-style-type: none"> • Flight lines were orientated northwest - southeast to run perpendicular to most of the structures and geology of the area.
Sample security	<ul style="list-style-type: none"> • <i>The measures taken to ensure sample security.</i> 	<ul style="list-style-type: none"> • All data was collected under strict security measure by UTS Geophysics Pty Ltd.
Audits or reviews	<ul style="list-style-type: none"> • <i>The results of any audits or reviews of sampling techniques and data.</i> 	<ul style="list-style-type: none"> • Data checks and processing reviews were undertaken daily and at the completion of the program by the contractor.

Criteria	JORC Code explanation	Commentary
		<ul style="list-style-type: none">Review of the data was undertaken by an independent consultant Mitre Geophysics.

personal use only

JORC Code, 2012 Edition – Table 1 report

Section 2 Reporting of Exploration Results

section also apply to this section.)

Criteria	JORC Code explanation	Commentary
Mineral tenement and land tenure status	<ul style="list-style-type: none"> • <i>Type, reference name/number, location and ownership including agreements or material issues with third parties such as joint ventures, partnerships, overriding royalties, native title interests, historical sites, wilderness or national park and environmental settings.</i> • <i>The security of the tenure held at the time of reporting along with any known impediments to obtaining a licence to operate in the area.</i> 	<ul style="list-style-type: none"> • Tenement includes Oonagalabi (EL32279) for a total of 145.3km² and 46 sub-blocks. • EL32279 is owned by Kalk Exploration Pty. Ltd., a 100% owned entity of Litchfield Minerals Limited. The tenement is located approximately 125km northeast of Alice Springs on pastoral leases. • The tenement is in good standing and there are no known impediments.
Exploration done by other parties	<ul style="list-style-type: none"> • <i>Acknowledgment and appraisal of exploration by other parties.</i> 	<ul style="list-style-type: none"> • A summary of previous EL32279 exploration and mining is presented below: • Oonagalabi was discovered in the 1930's. • In 1970, Russgar Minerals completed regional mag-rad survey, VLF_EM survey, ground magnetic survey, single line resistivity traverse and 14 drillholes. • In 1971, Geopeko completed limited IP. • 1979, Amoco completed photo-interpretation, rock chip sampling and drilling (8 holes). • 1981 D'Dor Mining NL completed limited dipole-dipole IP. • Between 1990 – 1996 on EL 6940 Clarence River Finance Group explored for garnet in the Florence and Maud Creeks, collecting 15 samples that averaged 4.4% garnet

Criteria	JORC Code explanation	Commentary
		<ul style="list-style-type: none"> Between 1997 – 2000 on EL 9420 Clarence River Finance Group completed garnet exploration north of Oonagalabi EL32279. In 2007, ML 22624 was applied for to cover the central Oonagalabi deposit and surrounding proximal alluvial systems (outside 2025 bulk sampling area). No work was completed and the ML was relinquished in 2019. Silex 2009 completed pole-dipole IP 1 x diamond hole.
Geology	<ul style="list-style-type: none"> <i>Deposit type, geological setting and style of mineralisation.</i> 	<ul style="list-style-type: none"> The Oonagalabi-type mineralisation is considered to be either skarn-related, sediment-hosted or carbonate replacement with potential for high-grade remobilised breccia zones similar to the Jervois deposit. EL32279 falls within one of Geoscience Australia’s IOCG high potential zones. The project lies within the Harts Range that represents a package of multiply deformed and metamorphosed sedimentary and igneous intrusive rock.
Drill hole Information	<ul style="list-style-type: none"> <i>A summary of all information material to the understanding of the exploration results including a tabulation of the following information for all Material drill holes:</i> <ul style="list-style-type: none"> <i>easting and northing of the drill hole collar</i> 	<ul style="list-style-type: none"> No new drilling reported.

Criteria	JORC Code explanation	Commentary
	<ul style="list-style-type: none"> ○ elevation or RL (<i>Reduced Level – elevation above sea level in metres</i>) of the drill hole collar ○ dip and azimuth of the hole ○ down hole length and interception depth ○ hole length. <ul style="list-style-type: none"> ● <i>If the exclusion of this information is justified on the basis that the information is not Material and this exclusion does not detract from the understanding of the report, the Competent Person should clearly explain why this is the case.</i> 	
Data aggregation methods	<ul style="list-style-type: none"> ● <i>In reporting Exploration Results, weighting averaging techniques, maximum and/or minimum grade truncations (e.g. cutting of high grades) and cut-off grades are usually Material and should be stated.</i> ● <i>Where aggregate intercepts incorporate short lengths of high grade results and longer lengths of low grade results, the procedure used for such aggregation should be stated and some typical examples of such aggregations should be shown in detail.</i> ● <i>The assumptions used for any reporting of metal equivalent values should be clearly stated.</i> 	<ul style="list-style-type: none"> ● No aggregation methods were used.
Relationship between mineralisation widths and	<ul style="list-style-type: none"> ● <i>These relationships are particularly important in the reporting of Exploration Results.</i> ● <i>If the geometry of the mineralisation with respect to the drill hole angle is known, its nature should be reported.</i> 	<ul style="list-style-type: none"> ● No drilling results reported. .

Criteria	JORC Code explanation	Commentary
<i>Intercept lengths</i>	<ul style="list-style-type: none"> If it is not known and only the down hole lengths are reported, there should be a clear statement to this effect (e.g. 'down hole length, true width not known'). 	
<i>Diagrams</i>	<ul style="list-style-type: none"> Appropriate maps and sections (with scales) and tabulations of intercepts should be included for any significant discovery being reported. These should include, but not be limited to a plan view of drill hole collar locations and appropriate sectional views. 	<ul style="list-style-type: none"> See figures within the main body of the announcement.
<i>Balanced reporting</i>	<ul style="list-style-type: none"> Where comprehensive reporting of all Exploration Results is not practicable, representative reporting of both low and high grades and/or widths should be practiced to avoid misleading reporting of Exploration Results. 	<ul style="list-style-type: none"> All available relevant information is presented.
<i>Other substantive exploration data</i>	<ul style="list-style-type: none"> Other exploration data, if meaningful and material, should be reported including (but not limited to): geological observations; geophysical survey results; geochemical survey results; bulk samples – size and method of treatment; metallurgical test results; bulk density, groundwater, geotechnical and rock characteristics; potential deleterious or contaminating substances. 	<ul style="list-style-type: none"> See the main body of this report for all pertinent observations and interpretations. The occurrence of the so-called “Zinc Bush” plants, so termed by Litchfield Minerals, appears to act as geobotanical indicator in this area. Before VTEM ground-truthing, the ‘zinc bush’ had only been observed on mineralised outcropping Oonagalabi Formation.
<i>Further work</i>	<ul style="list-style-type: none"> The nature and scale of planned further work (e.g. tests for lateral extensions or depth extensions or large-scale step-out drilling). 	<p>Future planned exploration includes:</p> <ul style="list-style-type: none"> Field validation of Priority 1 conductors Earthworks for drillhole pads and tracks

personal use only

Criteria	JORC Code explanation	Commentary
	<ul style="list-style-type: none"><i>Diagrams clearly highlighting the areas of possible extensions, including the main geological interpretations and future drilling areas, provided this information is not commercially sensitive.</i>	<ul style="list-style-type: none">RC drilling of priority conductors, gold targets and the Bomb Diggity magnetic anomaly.