



Office Address
3 Richardson Street
West Perth WA 6005
admin@uvre.com.au
www.uvre.com.au

Postal Address
PO Box 1976
West Perth WA 6872
Contact Number
+61 8 6319 1900

ACN: 650 124 324 | ASX: UVA

1 September 2025

Drilling set to start at flagship Waitekauri Gold Project in New Zealand

Uvre's maiden drilling program will target outstanding historical underground trenching results of up to 80g/t Au, and recent rock chip assays of up to 18g/t Au

Highlights

- **Diamond drilling contract signed with EcoDrilling for a 3,000m, nine-hole program at the flagship Waitekauri Gold Project near Waihi; Drilling expected to start in early October**
- **Waitekauri is a brownfields gold project, located in a richly-endowed epithermal gold district known as the Hauraki Goldfield**
- **Waitekauri's eastern tenement boundary sits only 1km west of OceanaGold Corporation's Waihi Gold Mine (+12Moz Au produced to date) and in the centre of a heavily gold mineralised corridor hosting three other +1Moz gold deposits**
- **OceanaGold's Wharekirauponga (WKP) deposit (2.2Moz at 14.3g/t) is located within this mineralised corridor, 5km to the northeast of the Waitekauri licence**
- **Drilling will focus on the Jubilee prospect at Waitekauri, with potential to drill test recently located untested outcropping epithermal structures south of the Scotia prospect**
- **Historical underground trenching at Jubilee by Cyprus Gold NZ in 1991 delivered significant high grade assay results including:**
 - **Channel_JU28 13.0m @ 80g/t Au**
 - **Channel_JU27 24.0m @ 45g/t Au**
 - **Channel_JU22 23.0m @ 42g/t Au**
- **Historical production at Waitekauri graded 48g/t Au+Ag (bullion)**
- **Drill targeting at Jubilee will be based on the historical mining, trenching and recent strong rock chip assays up to 18.4g/t Au received from recent reconnaissance sampling**
- **New occurrences of epithermal quartz identified at Waitekauri in an area with no historical drilling**
- **Uvre is well-funded for its exploration programs following the recently completed \$4m capital raising, with ~\$5.7m cash at bank**

Uvre Limited (ASX: UVA) is pleased to announce that it is set to start its maiden drilling at the flagship Waitekauri Gold Project in early October, after signing a drilling contract with New Zealand-based EcoDrilling Limited (EcoDrilling) and securing a diamond rig.

This initial program comprises 3,000m of diamond drilling to test several priority targets generated from historical Jubilee mining operations, large drill database, recently discovered historical high grade underground trenching results and by the recent rock chip assays.

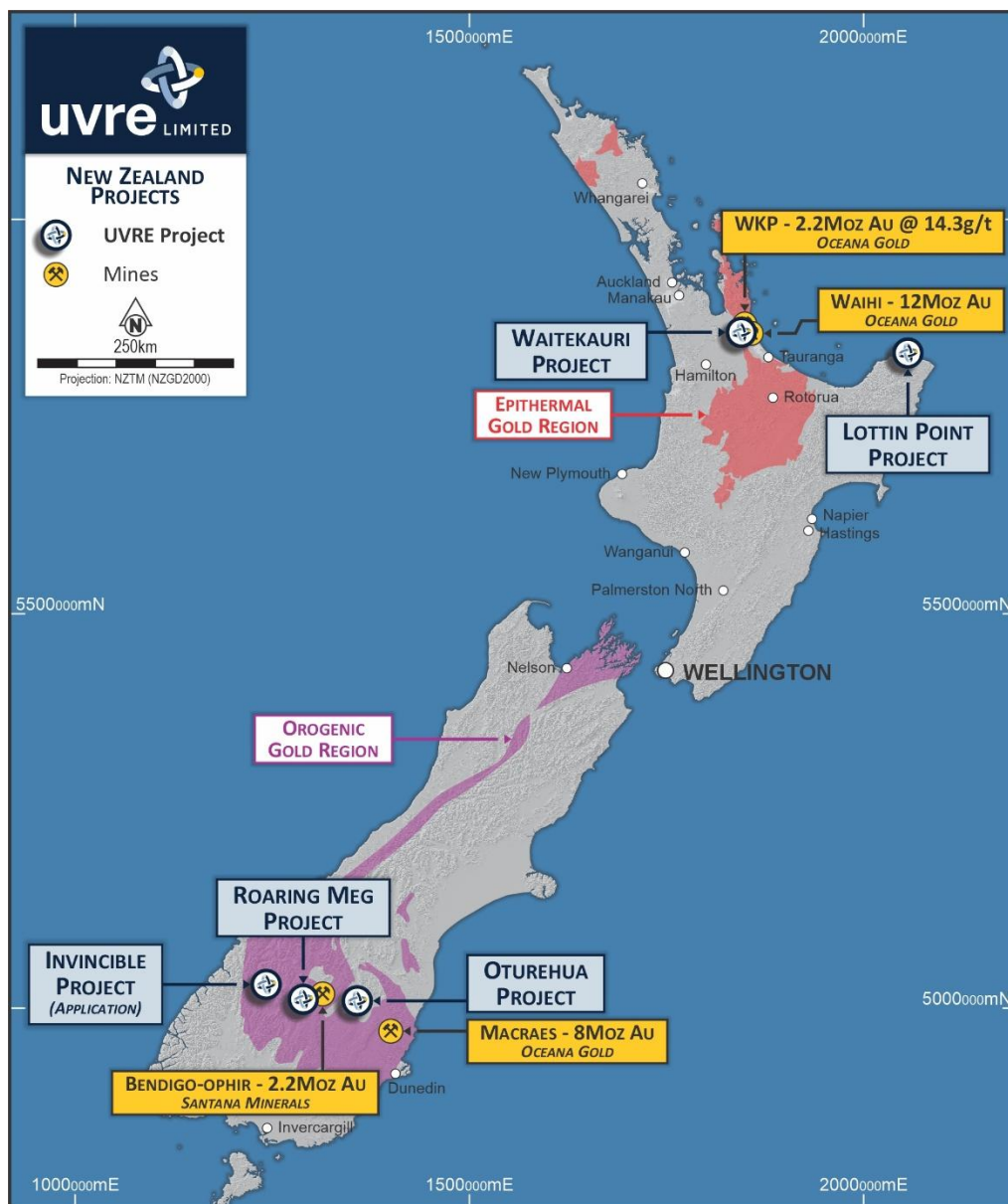


Figure 1: Location of Uvre’s NZ Gold Projects

Uvre’s Executive Chairman Brett Mitchell said:

“Waitekauri ticks every box you could wish for in an early-stage exploration project, ranging from highly prospective geology and high-grade historical results through to multi-million-ounce neighbours. This drilling program will give us the first opportunity to test the

For personal use only

resource potential at the historic Jubilee mine, which we consider a highly prospective gold project.

Our confidence in the potential of the Waitekauri Gold Project is further strengthened by the historic underground trenching results from Jubilee which we have located in preserved historic exploration data.

These Jubilee underground channel sample results from Cyprus Gold NZ work programs in 1991 are extremely valuable as we define our priorities for this upcoming drilling program.

We are very excited by the potential at Waitekauri as it has several advanced gold projects led by Jubilee, particularly given that we are drilling just 5km along strike from the 2.2Moz deposit of WKP in the heart of the world-class Hauraki Goldfield”.

Historical High Grade Jubilee Mine Channel Sampling Results

The Waitekauri underground channel samples from the Jubilee historical mine returned highly promising assays which when combined with the favourable geological setting and the multi-million-ounce projects nearby, demonstrate Waitekauri’s potential.

The upside is highlighted by these high grade assays returned from trenching by Cyprus Gold in 1991 . It can be noted that most of the chip data can be verified against the historic plans that the providence of the data beyond this is not available and that some chip lines presumably were sourced from additional plans (1991 Harley, McConochie Cyprus Minerals NZ – Jubilee Prospect, Waitekauri Project PL 31-1777 – NZPAM).

ID	From	To	Sample_ID	Au	Ag	Level
CHANNEL_JU20	0	2	JUA20_1	135.00	-9	
CHANNEL_JU20	2.25	6	JUA20_2	33.00	-9	
CHANNEL_JU20	6	10	JUA20_3	0.40	-9	
CHANNEL_JU20	18.1	22	JUA20_4	0.40	-9	
CHANNEL_JU20	22.1	24	JUA20_5	13.00	-9	
CHANNEL_JU21	4	14	JUA21_1	-9.00	-9	
CHANNEL_JU22	2	8	JUA22_1	26.00	-9	340m
CHANNEL_JU22	8.6	25	JUA22_2	50.00	-9	
CHANNEL_JU22	25.7	29	JUA22_3	-9.00	-9	
CHANNEL_JU23	0.6	4	JUA23_1	33.00	-9	
CHANNEL_JU23	4.9	12	JUA23_2	30.00	-9	
CHANNEL_JU23	12.9	15	JUA23_3	28.00	-9	
CHANNEL_JU23	21.1	29	JUA23_4	13.00	-9	
CHANNEL_JU24	0	8	JUA24_1	7.00	-9	
CHANNEL_JU25	4	12	JUA25_1	7.00	-9	
CHANNEL_JU26	0	4	JUA26_1	14.25	-9	
CHANNEL_JU26	10	16	JUA26_2	51.00	-9	
CHANNEL_JU26	16.9	20	JUA26_3	27.00	-9	
CHANNEL_JU26	20.7	25	JUA26_4	-9.00	-9	
CHANNEL_JU27	0	5	JUA27_1	91.00	-9	300m
CHANNEL_JU27	5	9	JUA27_2	93.00	-9	300m
CHANNEL_JU27	9	16	JUA27_3	0.40	-9	
CHANNEL_JU27	16	20	JUA27_4	13.00	-9	320m
CHANNEL_JU27	20.8	24	JUA27_5	63.00	-9	320m
CHANNEL_JU28	0	13	JUA28_1	80.00	-9	
CHANNEL_JU29	0	9	JUA29_1	43.00	-9	
CHANNEL_JU29	9.2	16	JUA29_2	11.00	-9	
CHANNEL_JU29	16.1	21	JUA29_3	4.00	-9	
CHANNEL_JU29	21	28	JUA29_4	-9.00	-9	
CHANNEL_JU29	28.2	29	JUA29_5	13.00	-9	

Table 1: High grade trenches – wall rock rock chip sampling in 1991 - Au Fire Assay 30g Charge, Ag Regia Digest 30g charge - please note due to underground obstacles or sampling procedure some intervals are discontinuous. Assays by ISL (International Service Laboratories Report Number 6122 1991)

For personal use only

The historical Jubilee mine and Uvre’s priority drilling prospect sits in the middle of the Company’s Waitekauri project tenement. Jubilee is directly south-west of the historical Golden Cross mine and north-east of the Karangahake mine, in the centre of NE-SW structural trend that also hosts the recent +2.2Moz (at 14.3g/t Au) deposit at WKP, owned by OceanaGold Corporation (**OceanaGold**).

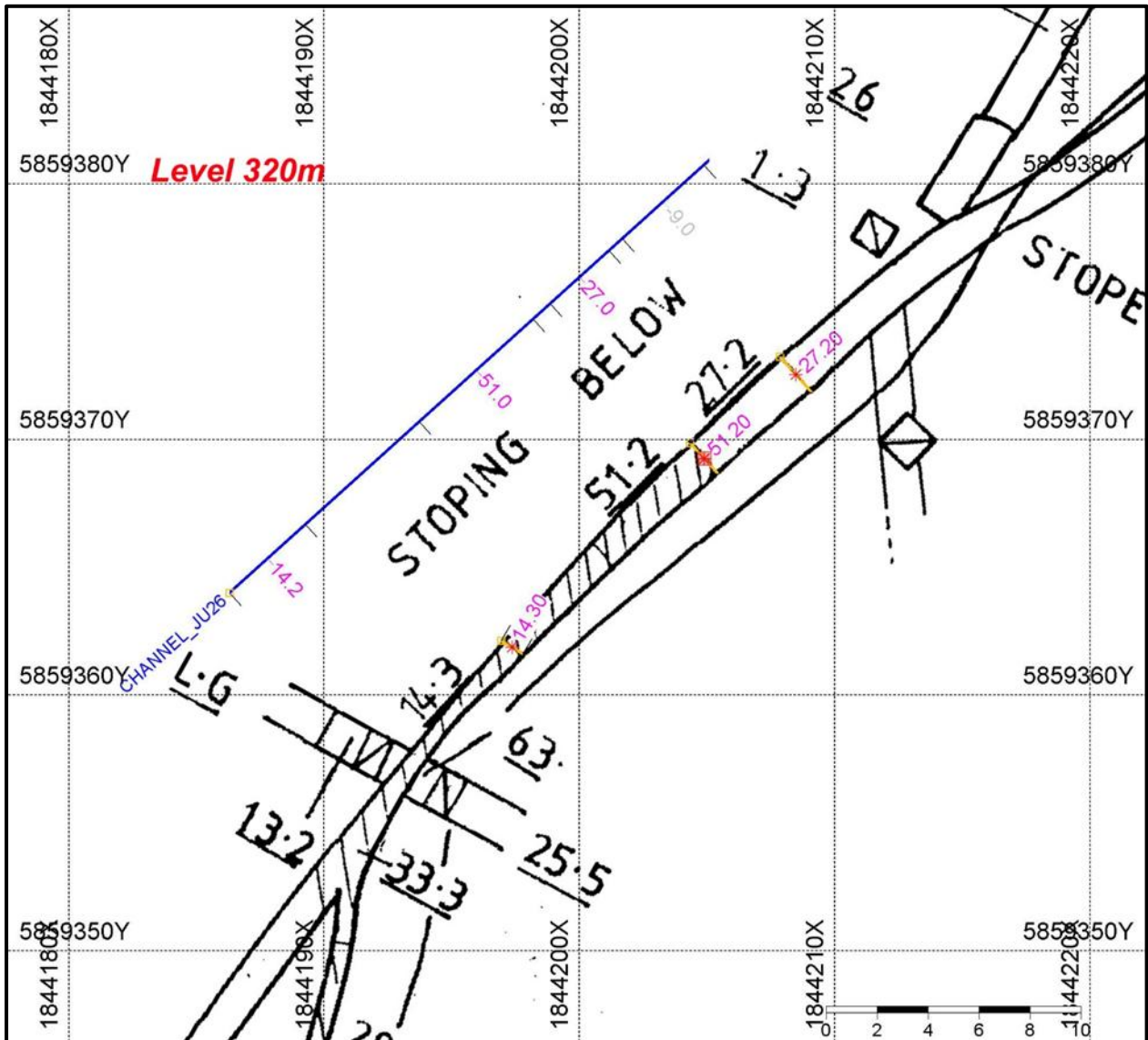


Figure 2: Uvre has registered channel maps to ensure the database for example in this case Channel_JU26: 10.7m @ 42.8g/t Au matches the underground registered geological sampling maps. NZD 2000 Grid

For personal use only



Figure 3: Channel_JU22: 23.0m @ 42 g/t Au is a rise channel or vertical in the Long Section of the mine

Hauraki Goldfield – Gold Rich Mineralised Province

Hauraki is a world-class goldfield located in Waikato region New Zealand, with a global reputation for hosting high-grade silver and gold deposits. It has been home to more than 50 epithermal mines since the 1860s, producing +15Moz of gold and 60Moz of silver.

The region shares many key characteristics with Kalgoorlie, being home to extensive mineralised systems and many exploration and mining projects since 1862. The region also offers access to well-established infrastructure and a skilled workforce. Mining is the driving force of the local economy and is at the centre of the social fabric.

For personal use only

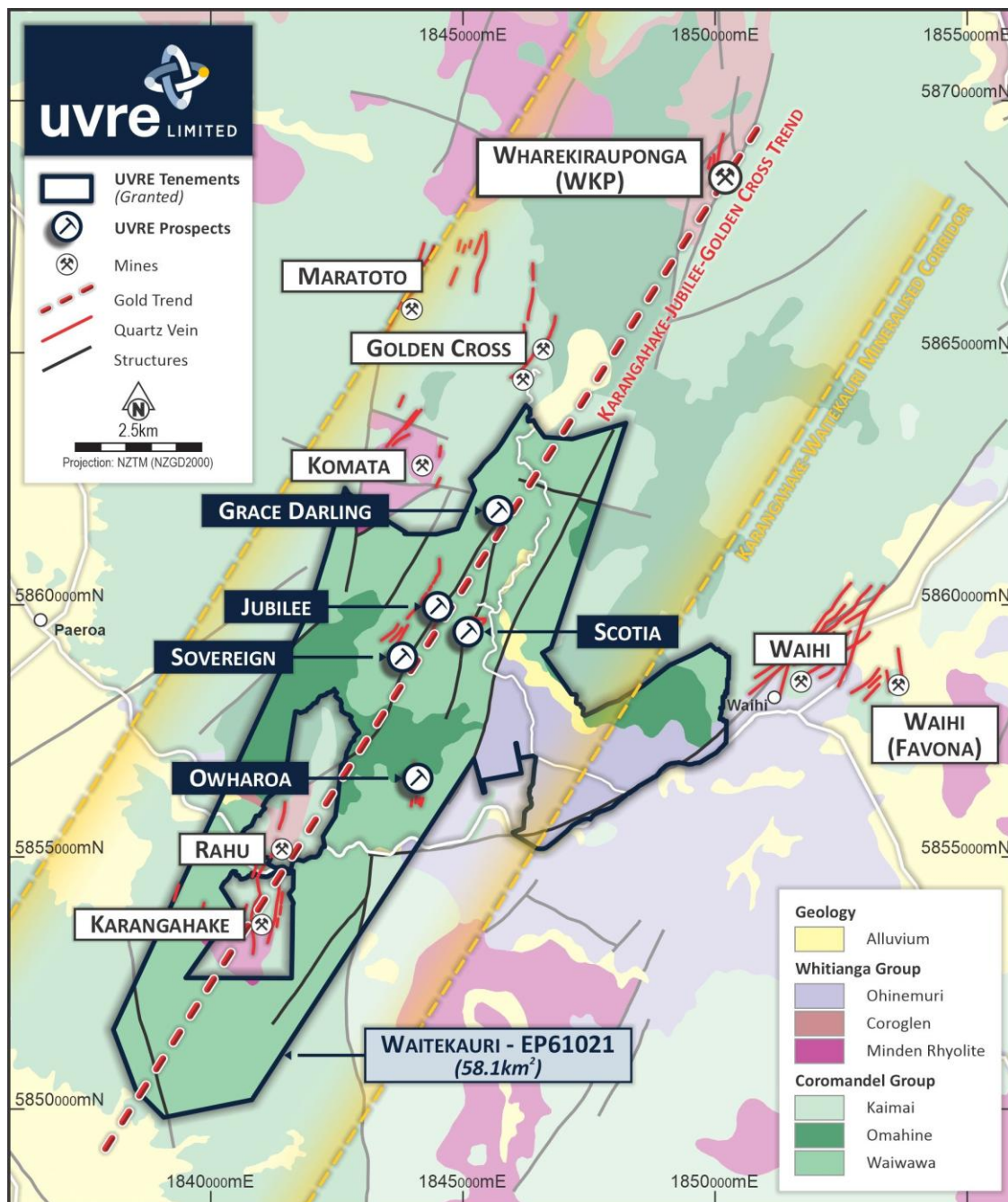


Figure 4: Geological setting of the Waitekauri licence in respect to major Au-Ag occurrences in Waihi Goldfield

Waitekauri Gold Project Overview

The Waitekauri Gold Project covers 58km² in the Hauraki goldfield. The Waitekauri tenement eastern boundary is located only 1km west of OceanaGold’s Waihi gold mine.¹ The Waitekauri project area displays the hallmarks of a major goldfield in a region with a compelling mineral resource endowment, located in the middle of the northeast/southwest structural trend that hosts numerous multi-million ounce deposits including OceanaGold’s WKP, Karangahake and Golden Cross deposits.

¹<https://oceanagold.com/operation/waihi/>, <https://oceanagold.com/operation/resources-and-reserves/>

For personal use only

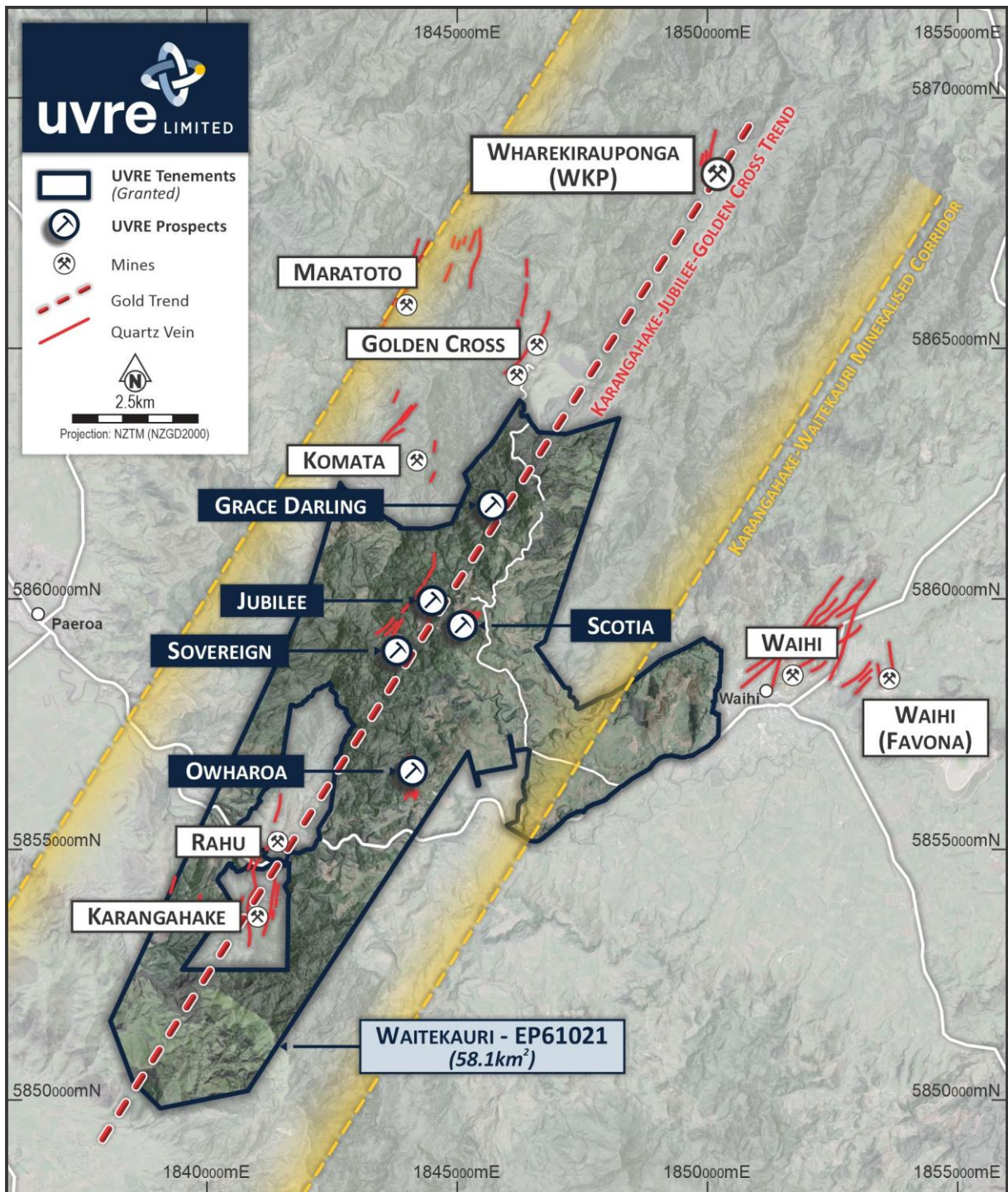


Figure 5: Gold prospects occur in a defined NE-SW structural trend which extends from the WKP discovery down through Uvre’s Waitekauri Gold Project

The Waitekauri Gold Project is within an 18km long mineralised corridor hosting multiple targets and historical workings, with three priority prospects for exploration: Jubilee, Scotia and Sovereign.

A discovery of previously unmapped occurrence of epithermal quartz boulders interpreted as new outcropping vein south of the Scotia prospect opens potential for further exploration in a new area.

For personal use only

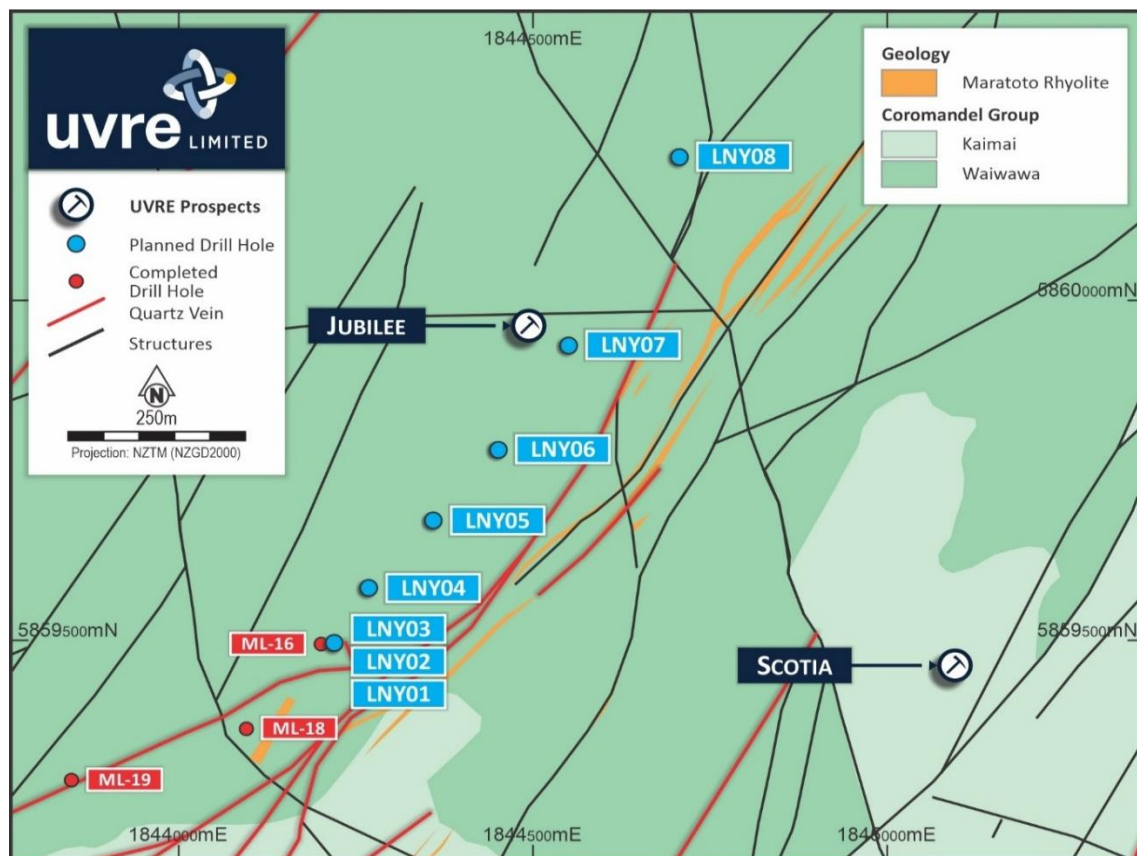


Figure 6: Jubilee drilling program is designed to target historical high-grade zones

Uvre will be targeting bonanza-style gold-silver low sulphidation veins with the aim of identifying a multi-million-ounce resource. The 2019 definition⁵ of high-grade zones at OceanaGold’s WKP deposit along the north-eastern trend of 2.2Moz @ 14.3g/t Au and 3.1Moz Ag² supports the view that the area is highly prospective for gold.

Untested Outcropping Epithermal Structures - South of Scotia Prospect

Recently initial field mapping by the Uvre team identified a large post-mineral welded ignimbrite unit in the area south of the Scotia prospect. The extent of this unit was not properly understood by previous operators and it may cover potential southern extensions of the mineralised system, thereby preventing detection of the system in soil geochemistry surveys. This untested outcropping epithermal structure may be drill tested as part of the initial drilling diamond drilling program at Waitekauri.

This announcement has been authorised by the Board of Uvre Limited.

For enquiries contact:

Brett Mitchell
 Executive Chairman
 +61 8 6319 1900
 brett@uvre.com.au

Paul Armstrong
 Read Corporate
 +61 8 9388 1474

² <https://oceanagold.com/operation/resources-and-reserves/>

⁵ Streiff, R, Randall, S, McArthur, F, Gardner, T and Torckler, L, 2019. Road to discovery at WKP, New Zealand, in Proceedings PACRIM 2019, pp 256259

For personal use only

Competent Person's Statement

The information in this Report that relates to Exploration Results is based on information compiled by Mr Jason Beckton, who is a Member of the Australian Institute of Geoscientists. Mr Beckton, who is Director of Otagold Limited, a wholly owned subsidiary of Uvre Limited, has sufficient experience which is relevant to the style of mineralisation and type of deposit under consideration and to the activity which he is undertaking to qualify as a Competent Person as defined in the 2012 edition of the 'Australasian Code for Reporting of Exploration Results, Mineral Resources and Ore Reserves'. Mr Beckton consents to the inclusion in this Report of the matters based on the information in the form and context in which it appears.

JORC Code, 2012 Edition – Table 1 Waitekauri, New Zealand

Section 1 Sampling Techniques and Data

Criteria	JORC Code explanation	Commentary
Sampling techniques	<p><i>Nature and quality of sampling (eg cut channels, random chips, or specific specialised industry standard measurement tools appropriate to the minerSGS Waihi under investigation, such as down hole gamma sondes, or handheld XRF instruments, etc). These examples should not be taken as limiting the broad meaning of sampling.</i></p> <p><i>Include reference to measures taken to ensure sample representivity and the appropriate calibration of any measurement tools or systems used.</i></p> <p><i>Aspects of the determination of mineralisation that are Material to the Public Report.</i></p> <p><i>In cases where ‘industry standard’ work has been done this would be relatively simple (eg ‘reverse circulation drilling was used to obtain 1 m samples from which 3 kg was pulverised to produce a 30 g charge for fire assay’). In other cases more explanation may be required, such as where there is coarse gold that has inherent sampling problems. Unusual commodities or mineralisation types (eg submarine nodules) may warrant disclosure of detailed information.</i></p>	<p>Rock chip grab samples were collected from outcrops, spoil heaps and accessible surface soil assumed from the internal workings.</p> <p>Samples were taken to understand the style and tenor of mineralisation prior to more detailed work being undertaken.</p>
Drilling techniques	<p><i>Drill type (eg core, reverse circulation, open-hole hammer, rotary air blast, auger, Bangka, sonic, etc) and details (eg core diameter, triple or standard tube, depth of diamond tails, face-sampling bit or other type, whether core is oriented and if so, by what method, etc).</i></p>	<p>Small diameter diamond drilling – approximately NQ and HQ size</p>
Drill sample recovery	<p><i>Method of recording and assessing core and chip sample recoveries and results assessed.</i></p> <p><i>Measures taken to maximise sample recovery and ensure representative nature of the samples.</i></p> <p><i>Whether a relationship exists between sample recovery and grade and whether sample bias may have occurred due to preferential loss/gain of fine/coarse material.</i></p>	<p>Historic core preserved at Aston Drilling facility Waihi</p>
Logging	<p><i>Whether core and chip samples have been geologically and geotechnically logged to a level of detail to support appropriate Mineral Resource estimation, mining studies and metallurgical studies.</i></p> <p><i>Whether logging is qualitative or quantitative in nature. Core (or costean, channel, etc) photography.</i></p> <p><i>The total length and percentage of the relevant intersections logged.</i></p>	<p>The complete core is to be relogged.</p>
Sub-sampling techniques and sample preparation	<p><i>If core, whether cut or sawn and whether quarter, half or all core taken.</i></p> <p><i>If non-core, whether riffled, tube sampled, rotary split, etc and whether sampled wet or dry.</i></p> <p><i>For all sample types, the nature, quality and appropriateness of the sample preparation technique.</i></p> <p><i>Quality control procedures adopted for all sub-sampling stages to maximise representivity of samples.</i></p> <p><i>Measures taken to ensure that the sampling is representative of the in situ material collected, including for instance results for field duplicate/second-half sampling.</i></p> <p><i>Whether sample sizes are appropriate to the grain size of the material being sampled.</i></p>	<p>½ or ¼ core cut with a thin diamond blade (due to the small diameter of the core)</p> <p>At this early stage no QC samples have been collected</p>

Criteria	JORC Code explanation	Commentary
Quality of assay data and laboratory tests	<p>The nature, quality and appropriateness of the assaying and laboratory procedures used and whether the technique is considered partial or total.</p> <p>For geophysical tools, spectrometers, handheld XRF instruments, etc, the parameters used in determining the analysis including instrument make and model, reading times, calibrations factors applied and their derivation, etc.</p> <p>Nature of quality control procedures adopted (eg standards, blanks, duplicates, external laboratory checks) and whether acceptable levels of accuracy (ie lack of bias) and precision have been established.</p>	<p>Samples are stored in the Waihi facility. Core in good condition.</p> <p>Assays will be carried out by SGS Waihi, an internationally certified laboratory.</p> <p>Historic assays obtained from paper logs have no record of the analytical methods used nor any record of QAQC procedures. However, where we have modern assays covering the same interval as the historic assays, the agreement is good. In the coming months there will be many more modern assays available, which will allow a better comparison.</p>
Verification of sampling and assaying	<p>The verification of significant intersections by either independent or alternative company personnel. <u>This is historic data and will be compared to modern sampling in 2024.</u></p> <p>The use of twinned holes.</p> <p>Documentation of primary data, data entry procedures, data verification, data storage (physical and electronic) protocols.</p> <p>Discuss any adjustment to assay data.</p>	
Location of data points	<p>Accuracy and quality of surveys used to locate drill holes (collar and down-hole surveys), trenches, mine workings and other locations used in Mineral Resource estimation.</p> <p>Specification of the grid system used.</p> <p>Quality and adequacy of topographic control.</p>	<p>Hole locations determined from historical records and converted to NZD 2000 Grid.</p>
Data spacing and distribution	<p>Data spacing for reporting of Exploration Results.</p> <p>Whether the data spacing and distribution is sufficient to establish the degree of geological and grade continuity appropriate for the Mineral Resource and Ore Reserve estimation procedure(s) and classifications applied.</p> <p>Whether sample compositing has been applied.</p>	<p>Nominal 1m spacing for NQ and HQ sampling in the past.</p>
Orientation of data in relation to geological structure	<p>Whether the orientation of sampling achieves unbiased sampling of possible structures and the extent to which this is known, considering the deposit type.</p> <p>If the relationship between the drilling orientation and the orientation of key mineralised structures is considered to have introduced a sampling bias, this should be assessed and reported if material.</p>	<p>No bias is believed to be introduced by the sampling method.</p>
Sample security	<p>The measures taken to ensure sample security.</p>	<p>Samples were collected by Laneway and or Newcrest JV employed personnel, bagged and immediately dispatched to the laboratory by independent courier</p>
Audits or reviews	<p>The results of any audits or reviews of sampling techniques and data.</p>	<p>No audits or reviews of the data management system have been carried out.</p>

Section 2 Reporting of Exploration Results

Criteria	JORC Code explanation	Commentary
Mineral tenement and land tenure status	<p>Type, reference name/number, location and ownership including agreements or material issues with third parties such as joint ventures, partnerships, overriding royalties, native title interests, historical sites, wilderness or national park and environmental settings.</p> <p>The security of the tenure held at the time of reporting along with any known impediments to obtaining a license to operate in the area.</p>	<p>Uvre Limited has 100% interest in Otagold Ltd NZ ('Otagold'), a company incorporated in New Zealand. The laws of New Zealand relating to exploration and mining have various requirements. As the exploration advances specific filings and environmental or other studies may be required. There are ongoing requirements under New Zealand mining laws that will be required at each stage of advancement. Those filings and studies are maintained and updated as required by Uvre's environmental and permit advisors specifically engaged for such purposes.</p> <p>The Company is the manager of operations in accordance with generally accepted mining industry standards and practices.</p>

Criteria	JORC Code explanation	Commentary																																																																																																																																																																																																																																																																																									
Exploration done by other parties	Acknowledgment and appraisal of exploration by other parties.	The areas discussed have been mapped, geochemically sampled (not reported) and drilled historically.																																																																																																																																																																																																																																																																																									
Geology	Deposit type, geological setting and style of mineralisation.	Epithermal gold silver mineralisation in a volcanic sequence.																																																																																																																																																																																																																																																																																									
Drill hole Information	<p>A summary of all information material to the understanding of the exploration results including a tabulation of the following information for all Material drill holes:</p> <p>easting and northing of the drill hole collar elevation or RL (Reduced Level – elevation above sea level in metres) of the drill hole collar dip and azimuth of the hole down hole length and interception depth hole length.</p> <p>If the exclusion of this information is justified on the basis that the information is not Material and this exclusion does not detract from the understanding of the report, the Competent Person should clearly explain why this is the case.</p>	<p>Drill Hole – Channel - Collar Information NZD 2000 Grid</p> <table border="1"> <thead> <tr> <th>Channel ID</th> <th>Chan_ID_Overall</th> <th>East</th> <th>North</th> <th>RI</th> <th>from</th> <th>to</th> </tr> </thead> <tbody> <tr><td>CHANNEL_JU20</td><td>Chan46</td><td>1844194</td><td>5859348</td><td>360</td><td>0.00</td><td>1.42</td></tr> <tr><td>CHANNEL_JU20</td><td>Chan47</td><td>1844199</td><td>5859357</td><td>360</td><td>0.00</td><td>1.11</td></tr> <tr><td>CHANNEL_JU20</td><td>Chan83</td><td>1844196</td><td>5859352</td><td>360</td><td>0.00</td><td>1.33</td></tr> <tr><td>CHANNEL_JU20</td><td>CHANNEL_JU20</td><td>1844204</td><td>5859347</td><td>386.784</td><td>6</td><td>10</td></tr> <tr><td>CHANNEL_JU20</td><td>CHANNEL_JU20</td><td>1844199</td><td>5859357</td><td>386.784</td><td>18.1</td><td>22</td></tr> <tr><td>CHANNEL_JU21</td><td>CHANNEL_JU21</td><td>1844208</td><td>5859362</td><td>387.86</td><td>4</td><td>14</td></tr> <tr><td>CHANNEL_JU22</td><td>Chan14</td><td>1844190</td><td>5859359</td><td>325.742</td><td>0.00</td><td>1.70</td></tr> <tr><td>CHANNEL_JU22</td><td>Chan15</td><td>1844195</td><td>5859356</td><td>325.806</td><td>0.00</td><td>1.66</td></tr> <tr><td>CHANNEL_JU22</td><td>Chan116</td><td>1844193</td><td>5859357</td><td>340.349</td><td>0.00</td><td>1.95</td></tr> <tr><td>CHANNEL_JU23</td><td>Chan5</td><td>1844191</td><td>5859354</td><td>325.756</td><td>0.00</td><td>1.40</td></tr> <tr><td>CHANNEL_JU23</td><td>Chan6</td><td>1844191</td><td>5859350</td><td>325.774</td><td>0.00</td><td>0.92</td></tr> <tr><td>CHANNEL_JU23</td><td>Chan7</td><td>1844189</td><td>5859344</td><td>325.808</td><td>0.00</td><td>0.70</td></tr> <tr><td>CHANNEL_JU23</td><td>Chan9</td><td>1844188</td><td>5859336</td><td>325.851</td><td>0.00</td><td>0.90</td></tr> <tr><td>CHANNEL_JU24</td><td>Chan117</td><td>1844186</td><td>5859337</td><td>340.349</td><td>0.00</td><td>1.58</td></tr> <tr><td>CHANNEL_JU25</td><td>Chan118</td><td>1844182</td><td>5859332</td><td>340.349</td><td>0.00</td><td>1.74</td></tr> <tr><td>CHANNEL_JU26</td><td>Chan1</td><td>1844208</td><td>5859373</td><td>325.673</td><td>0.00</td><td>1.89</td></tr> <tr><td>CHANNEL_JU26</td><td>Chan2</td><td>1844205</td><td>5859369</td><td>325.716</td><td>0.00</td><td>1.64</td></tr> <tr><td>CHANNEL_JU26</td><td>Chan4</td><td>1844197</td><td>5859362</td><td>325.808</td><td>0.00</td><td>1.00</td></tr> <tr><td>CHANNEL_JU26</td><td>CHANNEL_JU26</td><td>1844206</td><td>5859376</td><td>386.296</td><td>20.7</td><td>25</td></tr> <tr><td>CHANNEL_JU27</td><td>Chan13</td><td>1844191</td><td>5859358</td><td>325.753</td><td>0.00</td><td>1.52</td></tr> <tr><td>CHANNEL_JU27</td><td>Chan16</td><td>1844194</td><td>5859356</td><td>325.79</td><td>0.00</td><td>1.74</td></tr> <tr><td>CHANNEL_JU27</td><td>Chan98</td><td>1844182</td><td>5859363</td><td>298.344</td><td>0.00</td><td>1.39</td></tr> <tr><td>CHANNEL_JU27</td><td>Chan97</td><td>1844184</td><td>5859361</td><td>298.347</td><td>0.00</td><td>1.14</td></tr> <tr><td>CHANNEL_JU27</td><td>CHANNEL_JU27</td><td>1844185</td><td>5859362</td><td>398.888</td><td>9</td><td>16</td></tr> <tr><td>CHANNEL_JU28</td><td>CHANNEL_JU28</td><td>1844180</td><td>5859363</td><td>389.162</td><td>0</td><td>13</td></tr> <tr><td>CHANNEL_JU29</td><td>Chan99</td><td>1844179</td><td>5859365</td><td>298.351</td><td>0.00</td><td>1.49</td></tr> <tr><td>CHANNEL_JU29</td><td>CHANNEL_JU29</td><td>1844177</td><td>5859368</td><td>374.807</td><td>9.2</td><td>16</td></tr> <tr><td>CHANNEL_JU29</td><td>CHANNEL_JU29</td><td>1844175</td><td>5859369</td><td>369.252</td><td>16.1</td><td>21</td></tr> <tr><td>CHANNEL_JU29</td><td>CHANNEL_JU29</td><td>1844173</td><td>5859371</td><td>363.697</td><td>21</td><td>28</td></tr> <tr><td>CHANNEL_JU29</td><td>CHANNEL_JU29</td><td>1844172</td><td>5859371</td><td>359.87</td><td>28.2</td><td>29</td></tr> </tbody> </table> <p>Survey Information</p> <table border="1"> <thead> <tr> <th>ID</th> <th>depth</th> <th>az_mag</th> <th>dip (pos down)</th> </tr> </thead> <tbody> <tr><td>CHANNEL_JU20</td><td>0</td><td>0</td><td>0</td></tr> <tr><td>CHANNEL_JU20</td><td>10</td><td>0</td><td>0</td></tr> <tr><td>CHANNEL_JU20</td><td>16.9</td><td>0</td><td>0</td></tr> <tr><td>CHANNEL_JU21</td><td>0</td><td>0</td><td>0</td></tr> <tr><td>CHANNEL_JU21</td><td>4</td><td>0</td><td>-62</td></tr> <tr><td>CHANNEL_JU22</td><td>0</td><td>0</td><td>-67</td></tr> <tr><td>CHANNEL_JU23</td><td>0</td><td>0</td><td>0</td></tr> <tr><td>CHANNEL_JU23</td><td>6.2</td><td>0</td><td>0</td></tr> <tr><td>CHANNEL_JU24</td><td>0</td><td>0</td><td>-66</td></tr> <tr><td>CHANNEL_JU25</td><td>0</td><td>0</td><td>-66</td></tr> <tr><td>CHANNEL_JU25</td><td>4</td><td>0</td><td>0</td></tr> <tr><td>CHANNEL_JU26</td><td>0</td><td>0</td><td>0</td></tr> <tr><td>CHANNEL_JU27</td><td>0</td><td>0</td><td>-73</td></tr> <tr><td>CHANNEL_JU28</td><td>0</td><td>0</td><td>0</td></tr> <tr><td>CHANNEL_JU29</td><td>0</td><td>0</td><td>69</td></tr> </tbody> </table>	Channel ID	Chan_ID_Overall	East	North	RI	from	to	CHANNEL_JU20	Chan46	1844194	5859348	360	0.00	1.42	CHANNEL_JU20	Chan47	1844199	5859357	360	0.00	1.11	CHANNEL_JU20	Chan83	1844196	5859352	360	0.00	1.33	CHANNEL_JU20	CHANNEL_JU20	1844204	5859347	386.784	6	10	CHANNEL_JU20	CHANNEL_JU20	1844199	5859357	386.784	18.1	22	CHANNEL_JU21	CHANNEL_JU21	1844208	5859362	387.86	4	14	CHANNEL_JU22	Chan14	1844190	5859359	325.742	0.00	1.70	CHANNEL_JU22	Chan15	1844195	5859356	325.806	0.00	1.66	CHANNEL_JU22	Chan116	1844193	5859357	340.349	0.00	1.95	CHANNEL_JU23	Chan5	1844191	5859354	325.756	0.00	1.40	CHANNEL_JU23	Chan6	1844191	5859350	325.774	0.00	0.92	CHANNEL_JU23	Chan7	1844189	5859344	325.808	0.00	0.70	CHANNEL_JU23	Chan9	1844188	5859336	325.851	0.00	0.90	CHANNEL_JU24	Chan117	1844186	5859337	340.349	0.00	1.58	CHANNEL_JU25	Chan118	1844182	5859332	340.349	0.00	1.74	CHANNEL_JU26	Chan1	1844208	5859373	325.673	0.00	1.89	CHANNEL_JU26	Chan2	1844205	5859369	325.716	0.00	1.64	CHANNEL_JU26	Chan4	1844197	5859362	325.808	0.00	1.00	CHANNEL_JU26	CHANNEL_JU26	1844206	5859376	386.296	20.7	25	CHANNEL_JU27	Chan13	1844191	5859358	325.753	0.00	1.52	CHANNEL_JU27	Chan16	1844194	5859356	325.79	0.00	1.74	CHANNEL_JU27	Chan98	1844182	5859363	298.344	0.00	1.39	CHANNEL_JU27	Chan97	1844184	5859361	298.347	0.00	1.14	CHANNEL_JU27	CHANNEL_JU27	1844185	5859362	398.888	9	16	CHANNEL_JU28	CHANNEL_JU28	1844180	5859363	389.162	0	13	CHANNEL_JU29	Chan99	1844179	5859365	298.351	0.00	1.49	CHANNEL_JU29	CHANNEL_JU29	1844177	5859368	374.807	9.2	16	CHANNEL_JU29	CHANNEL_JU29	1844175	5859369	369.252	16.1	21	CHANNEL_JU29	CHANNEL_JU29	1844173	5859371	363.697	21	28	CHANNEL_JU29	CHANNEL_JU29	1844172	5859371	359.87	28.2	29	ID	depth	az_mag	dip (pos down)	CHANNEL_JU20	0	0	0	CHANNEL_JU20	10	0	0	CHANNEL_JU20	16.9	0	0	CHANNEL_JU21	0	0	0	CHANNEL_JU21	4	0	-62	CHANNEL_JU22	0	0	-67	CHANNEL_JU23	0	0	0	CHANNEL_JU23	6.2	0	0	CHANNEL_JU24	0	0	-66	CHANNEL_JU25	0	0	-66	CHANNEL_JU25	4	0	0	CHANNEL_JU26	0	0	0	CHANNEL_JU27	0	0	-73	CHANNEL_JU28	0	0	0	CHANNEL_JU29	0	0	69
Channel ID	Chan_ID_Overall	East	North	RI	from	to																																																																																																																																																																																																																																																																																					
CHANNEL_JU20	Chan46	1844194	5859348	360	0.00	1.42																																																																																																																																																																																																																																																																																					
CHANNEL_JU20	Chan47	1844199	5859357	360	0.00	1.11																																																																																																																																																																																																																																																																																					
CHANNEL_JU20	Chan83	1844196	5859352	360	0.00	1.33																																																																																																																																																																																																																																																																																					
CHANNEL_JU20	CHANNEL_JU20	1844204	5859347	386.784	6	10																																																																																																																																																																																																																																																																																					
CHANNEL_JU20	CHANNEL_JU20	1844199	5859357	386.784	18.1	22																																																																																																																																																																																																																																																																																					
CHANNEL_JU21	CHANNEL_JU21	1844208	5859362	387.86	4	14																																																																																																																																																																																																																																																																																					
CHANNEL_JU22	Chan14	1844190	5859359	325.742	0.00	1.70																																																																																																																																																																																																																																																																																					
CHANNEL_JU22	Chan15	1844195	5859356	325.806	0.00	1.66																																																																																																																																																																																																																																																																																					
CHANNEL_JU22	Chan116	1844193	5859357	340.349	0.00	1.95																																																																																																																																																																																																																																																																																					
CHANNEL_JU23	Chan5	1844191	5859354	325.756	0.00	1.40																																																																																																																																																																																																																																																																																					
CHANNEL_JU23	Chan6	1844191	5859350	325.774	0.00	0.92																																																																																																																																																																																																																																																																																					
CHANNEL_JU23	Chan7	1844189	5859344	325.808	0.00	0.70																																																																																																																																																																																																																																																																																					
CHANNEL_JU23	Chan9	1844188	5859336	325.851	0.00	0.90																																																																																																																																																																																																																																																																																					
CHANNEL_JU24	Chan117	1844186	5859337	340.349	0.00	1.58																																																																																																																																																																																																																																																																																					
CHANNEL_JU25	Chan118	1844182	5859332	340.349	0.00	1.74																																																																																																																																																																																																																																																																																					
CHANNEL_JU26	Chan1	1844208	5859373	325.673	0.00	1.89																																																																																																																																																																																																																																																																																					
CHANNEL_JU26	Chan2	1844205	5859369	325.716	0.00	1.64																																																																																																																																																																																																																																																																																					
CHANNEL_JU26	Chan4	1844197	5859362	325.808	0.00	1.00																																																																																																																																																																																																																																																																																					
CHANNEL_JU26	CHANNEL_JU26	1844206	5859376	386.296	20.7	25																																																																																																																																																																																																																																																																																					
CHANNEL_JU27	Chan13	1844191	5859358	325.753	0.00	1.52																																																																																																																																																																																																																																																																																					
CHANNEL_JU27	Chan16	1844194	5859356	325.79	0.00	1.74																																																																																																																																																																																																																																																																																					
CHANNEL_JU27	Chan98	1844182	5859363	298.344	0.00	1.39																																																																																																																																																																																																																																																																																					
CHANNEL_JU27	Chan97	1844184	5859361	298.347	0.00	1.14																																																																																																																																																																																																																																																																																					
CHANNEL_JU27	CHANNEL_JU27	1844185	5859362	398.888	9	16																																																																																																																																																																																																																																																																																					
CHANNEL_JU28	CHANNEL_JU28	1844180	5859363	389.162	0	13																																																																																																																																																																																																																																																																																					
CHANNEL_JU29	Chan99	1844179	5859365	298.351	0.00	1.49																																																																																																																																																																																																																																																																																					
CHANNEL_JU29	CHANNEL_JU29	1844177	5859368	374.807	9.2	16																																																																																																																																																																																																																																																																																					
CHANNEL_JU29	CHANNEL_JU29	1844175	5859369	369.252	16.1	21																																																																																																																																																																																																																																																																																					
CHANNEL_JU29	CHANNEL_JU29	1844173	5859371	363.697	21	28																																																																																																																																																																																																																																																																																					
CHANNEL_JU29	CHANNEL_JU29	1844172	5859371	359.87	28.2	29																																																																																																																																																																																																																																																																																					
ID	depth	az_mag	dip (pos down)																																																																																																																																																																																																																																																																																								
CHANNEL_JU20	0	0	0																																																																																																																																																																																																																																																																																								
CHANNEL_JU20	10	0	0																																																																																																																																																																																																																																																																																								
CHANNEL_JU20	16.9	0	0																																																																																																																																																																																																																																																																																								
CHANNEL_JU21	0	0	0																																																																																																																																																																																																																																																																																								
CHANNEL_JU21	4	0	-62																																																																																																																																																																																																																																																																																								
CHANNEL_JU22	0	0	-67																																																																																																																																																																																																																																																																																								
CHANNEL_JU23	0	0	0																																																																																																																																																																																																																																																																																								
CHANNEL_JU23	6.2	0	0																																																																																																																																																																																																																																																																																								
CHANNEL_JU24	0	0	-66																																																																																																																																																																																																																																																																																								
CHANNEL_JU25	0	0	-66																																																																																																																																																																																																																																																																																								
CHANNEL_JU25	4	0	0																																																																																																																																																																																																																																																																																								
CHANNEL_JU26	0	0	0																																																																																																																																																																																																																																																																																								
CHANNEL_JU27	0	0	-73																																																																																																																																																																																																																																																																																								
CHANNEL_JU28	0	0	0																																																																																																																																																																																																																																																																																								
CHANNEL_JU29	0	0	69																																																																																																																																																																																																																																																																																								
Data aggregation methods	<p>In reporting Exploration Results, weighting averaging techniques, maximum and/or minimum grade truncations (eg cutting of high grades) and cut-off grades are usually Material and should be stated.</p> <p>Where aggregate intercepts incorporate short lengths of high grade results and longer lengths of low grade results, the procedure used for such aggregation should be stated and some typical examples of such aggregations should be shown in detail.</p> <p>The assumptions used for any reporting of metal equivalent values should be clearly stated.</p>	A minimum sample length is 1m generally but can be as low as 0.15m is observed in historical sampling.																																																																																																																																																																																																																																																																																									

Criteria	JORC Code explanation	Commentary
Relationship between mineralisation widths and intercept lengths	<p><i>These relationships are particularly important in the reporting of Exploration Results.</i></p> <p><i>If the geometry of the mineralisation with respect to the drill hole angle is known, its nature should be reported.</i></p> <p><i>If it is not known and only the down hole lengths are reported, there should be a clear statement to this effect (eg 'down hole length, true width not known').</i></p>	In general the holes have intersected the mineralised zone nearly normal to the host structure – any exceptions to this are noted individually
Diagrams	<p><i>Appropriate maps and sections (with scales) and tabulations of intercepts should be included for any significant discovery being reported. These should include, but not be limited to a plan view of drill hole collar locations and appropriate sectional views.</i></p>	The location and results received for surface samples are displayed in the attached maps and/or tables.
Balanced reporting	<p><i>Where comprehensive reporting of all Exploration Results is not practicable, representative reporting of both low and high grades and/or widths should be practiced to avoid misleading reporting of Exploration Results.</i></p>	Results for all samples collected in the past are displayed on the attached maps and/or tables.
Other substantive exploration data	<p><i>Other exploration data, if meaningful and material, should be reported including (but not limited to): geological observations; geophysical survey results; geochemical survey results; bulk samples – size and method of treatment; metallurgical test results; bulk density, groundwater, geotechnical and rock characteristics; potential deleterious or contaminating substances.</i></p>	No metallurgical or bulk density tests were conducted at the project by Uvre.
Further work	<p><i>The nature and scale of planned further work (eg tests for lateral extensions or depth extensions or large-scale step-out drilling).</i></p> <p><i>Diagrams clearly highlighting the areas of possible extensions, including the main geological interpretations and future drilling areas, provided this information is not commercially sensitive.</i></p>	Uvre may carry out drilling Additional systematic sampling of selected structures.

END.