

Comet Vale Gold Project, WA – Exploration Update

Camp-scale gold system emerging at Comet Vale

- Lakeview gold discovery extended a further 150m down-dip with significant new high-grade intercepts returned from the King Kong lode including new interpreted hanging-wall and footwall positions:
 - **6m @ 10.3g/t Au from 246m** in LVEX119, 150m down-dip of LVEX034 (24m @ 10.3g/t Au from 200m) on the main King Kong structure.
 - **4m @ 6.5g/t Au from 276m** in in LVEX119, on a potentially new structure to the south of the main King Kong structure.
 - **9m @ 1.1g/t Au from 197m** in LVEX119, on a potentially new structure to the north of the main King Kong structure.
- Initial regional RC drilling along the 5km long Silverback Trend, has intersected shallow gold mineralisation halfway between the Cheer and Happy Jack Prospects:
 - **2m @ 4.8g/t Au from 89m** in CVEX047, 1.3km along strike to the west of recent Happy Jack Drilling (HJEX005: 21m @ 11.6 g/t Au from 23m).
 - **4m @ 1.4g/t Au from 72m** in CVEX046, 1.3km along strike to the west of Happy Jack Drilling (HJEX005: 21m @ 11.6 g/t Au from 23m).
- This is a very significant development, demonstrating excellent potential for continuous mineralisation to be defined along the 5km long Silverback Trend.
- Silverback is just one of many inter-related mineralised shear zones located along a 10km long x 3km wide structurally deformed and mineralised zone at Comet Vale.
- A multi-rig drilling campaign is underway to unlock the camp-scale opportunity at Comet Vale, undertaking exploration across Cheer, Sovereign North, Sovereign and Happy Jack and growth drilling at Lakeview.
- A significant pipeline of assay results is expected from multiple prospects at Comet Vale over the coming weeks as Gorilla gears up for a project-wide Mineral Resource Estimate update in Q4 2025.

Gorilla Gold Mines Ltd (ASX: GG8) ('Gorilla' or 'the Company'), is pleased to provide an update on its multi-rig exploration and resource growth drilling program at the 100%-owned Comet Vale Gold Project, located 97km north of Kalgoorlie in WA's Goldfields, close to infrastructure.

This release reports new high-grade assay results from step-out diamond drilling which has successfully extended the main high-grade King Lode at the Lakeview Prospect a further 150 metres down-dip, as well as from drilling undertaken in August 2025 along the Silverback Trend.



The Silverback Trend is a parallel shear zone that sits to the south and extends for ~5km to the west of Lakeview (see Figure 1). It is one of many inter-related mineralised shear zones identified within a broad 10km by 3km zone of structural deformation and mineralisation at the Comet Vale Project (see Figures 4,6,7).

These significant new results continue to **reinforce the potential for a camp-scale gold system at Comet Vale (see Figures 4,6,7)**, with extensive high-grade mineralisation already defined at more advanced prospects such as Sovereign and Lakeway, and new discoveries continuing to be made on a regular basis as the Company's multi-rig drilling program advances.

The current phase of drilling will underpin an updated Mineral Resource Estimate ('MRE') for the Comet Vale Project scheduled for Q4 this year, following the recently announced MRE upgrade for the Mulwarrie Project to 350koz at 3.6g/t Au.

Charles Hughes, Gorilla's Chief Executive Officer, commented:

"The quality and sheer scale of the Comet Vale Gold Project is continuing to surprise us as we systematically expand existing discoveries and identify new mineralised positions.

"Exciting new results have been received on two fronts, building on our recent success at the Happy Jack prospect, where drilling recently returned a standout intercept of 21m at 11.6g/t from the first ever round of drilling there.

"The diamond drill campaign at Lakeview – which was one of our first breakthrough new discoveries at Comet Vale – has continued to extend the main King Lode down-dip, with an intercept of 6m at 10.3g/t Au in hole LVEX119, 150m down-dip of the previous intercept of 24m at 10.3g/t in hole LVEX034.

"This is a great result, which demonstrates the continuity of the very high-grade main King Kong Lode to ~250m down-hole or 200 metres vertical depth.

"This same hole has also intersected two potential new mineralised structures to the south and north of the main King Kong structure, returning intercepts of 4m at 6.5g/t and 9m at 1.1g/t which highlight the significant upside from ongoing drilling targeting the mineralised footwall and hangingwall positions.

"In the meantime, shallow RC drilling along the Silverback Trend has returned two significant intercepts of 2m at 4.8g/t and 4m at 1.4g/t in a completely new position halfway between the Cheer and Happy Jack prospects.

"The Silverback Trend is a major parallel shear zone that sits to the south of Lakeview and extends for at least 5km to the west. It is completely under-drilled and clearly offers enormous potential to discover a lot more gold, particularly given its favourable structural position and the vast amount of historical workings that exist along the entire structure.

"What is apparent is that we are only just getting going at Comet Vale, with our recent drilling success just the tip of the iceberg within a strongly endowed, camp-scale system.

"Fortunately, this opportunity has been preserved for Gorilla Gold because of the historical focus on the Sovereign deposit that produced 200koz @ 20g/t Au and which had been the focus of most of the previous drilling and mining. Investors can look forward to an exciting ride ahead as we build towards our Q4 MRE update at Comet Vale!"

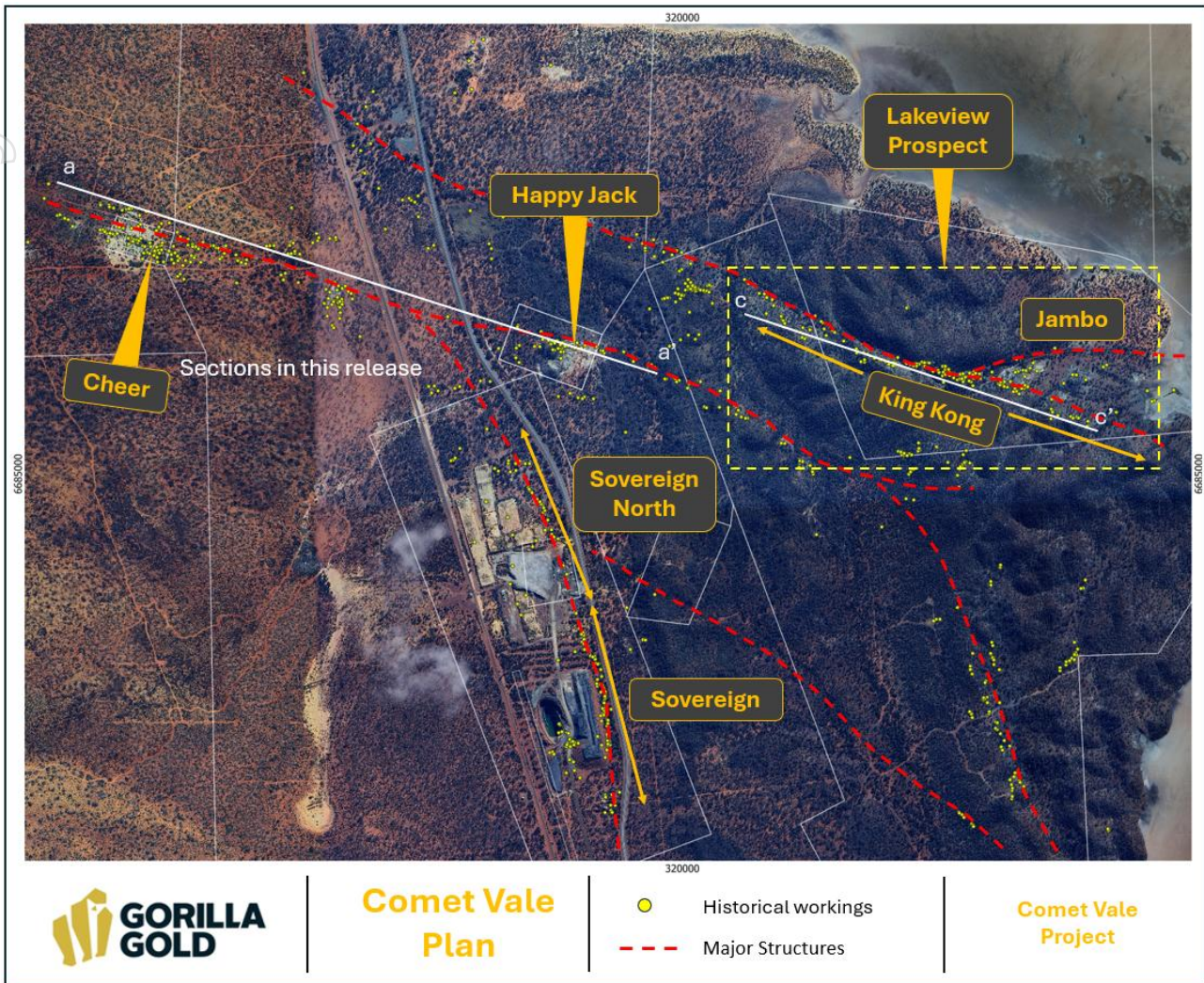


Figure 1. Map showing targets, and prospects at the Comet Vale Project

Growth and Exploration Activities at Comet Vale

The Comet Vale Project is located 100km north of Kalgoorlie in the Eastern Goldfields of Western Australia. The Project has seen historical gold production of >200koz @ >20g/t Au, with underground operations occurring as recently as 2020. The bulk of historical production comes from the Sovereign Prospect, which also hosts a MRE of 96koz @ 4.8g/t Au (composed of a high grade underground and a lower grade potential open pit component). Historically the Comet Vale Project was one of the last discovered goldfields prior to the First World war and approximately 75% of the project area sits under shallow cover.

Gorilla Gold discovered shallow high grade gold at **Sovereign North** in January 2025, a significant high-grade gold discovery at the **Lakeview Prospect** in February 2025, and a new discovery at **Happy Jack** in August 2025. The project lies within granted Mining Leases, adjacent to the Goldfields Highway, in a region with multiple operational gold mills within a 100km radius. The Company has identified a 10km by 3km zone of interrelated structural deformation and mineralisation within which the Sovereign shear-zone, King Kong shear-zone, and the Silver Back shear-zones are situated. Previous operators of the Project employed strategies to get the Sovereign mine into production as quickly as possible, which, along with the significant cover in the area has left the Project with significant exploration upside. Gorilla's immediate objective is to grow the high-grade gold resource base at the Comet Vale Project across the Lakeview, Cheer and Sovereign prospects.

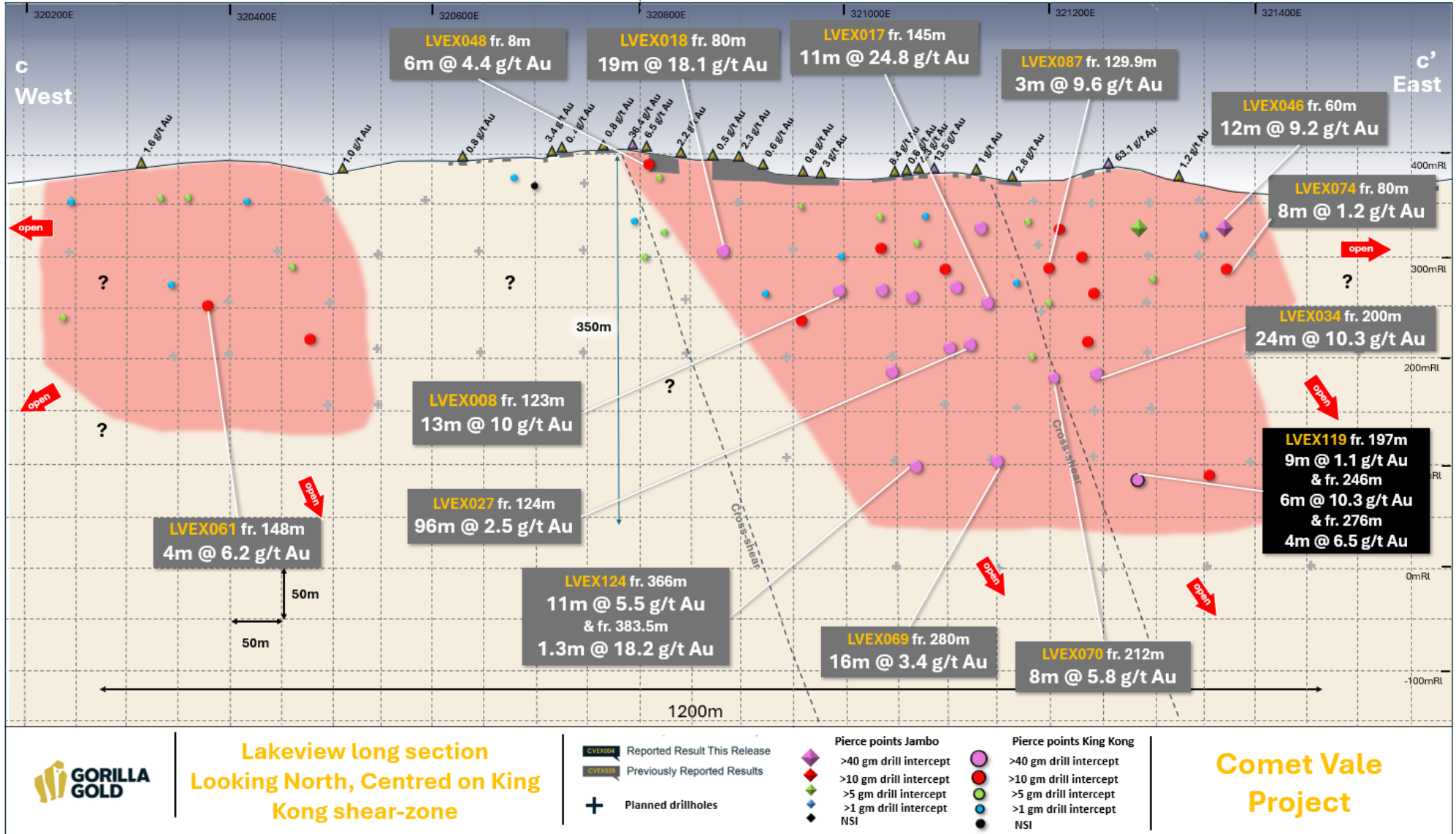


Figure 2. Long section, Lakeview Prospect centred on King Kong shear-zone, Comet Vale Project



personal use only

Update from Lakeview Prospect, Comet Vale Project

Minimal work has been completed historically at the Lakeview Prospect. Historical workings from the early 1900's are present over 2km of strike and vary from open stoping at surface to small exploratory pits and shafts, with only three RC drill holes drilled by Reed Resources in the early 2000's. A major East-West fault system is developed in ultramafic lithologies adjacent to a granite contact.

Gorilla targeted coincident major structures, surface geochemistry and historic gold mining efforts in a scout drilling program in February 2025 and intersected significant thick, high-grade gold mineralisation.

Significant intercepts at Lakeview – new discovery, mineralisation not in resource, >1200m of strike on 1 structure, from surface to a depth >300m, multiple structures, completely open

- 19m @ 18.1 g/t Au fr. 80m LVEX018 (344 gram-metre)
- 11m @ 24.8 g/t Au fr. 145m LVEX017 (273 gm)
- 24m @ 10.3g/t Au fr. 200m LVEX034 (247 gm)
- 96m @ 2.5g/t Au fr. 125m LVEX027 (240 gm)
- 40m @ 4g/t Au fr. 128m LVEX031 (160 gm)
- 22m @ 6.8g/t Au fr. 138m LVEX030 (150 gm)
- 13m @ 10g/t Au fr. 123m LVEX008 (130 gm)

Table 1. Significant Intercepts from the Lakeview Prospect

The mineralisation encountered is associated with quartz veining, pyrrhotite and chalcopyrite sulphide development within quartz-carbonate veins and surrounding biotite-chlorite-actinolite altered and strongly deformed ultramafic units associated with the Lakeview fault structure.

Initial metallurgical testwork from the Lakeview Prospect has demonstrated the ability for high levels of gold recoveries via standard gravity and cyanide leach processes (55% by gravity methods and 97.5% by cyanide leach), used in most gold milling facilities in the Goldfields.

Drilling results reported in this release have extended the mineralised footprint of the King Kong lode, Lakeview Prospect down plunge by 150m in the east, the total strike length of the system is greater than 1200m, with a high grade core to the system which is 700m long and has been drilled 350m below surface (Figure 2).

Hole ID	From	To	interval	Au g/t	Notes
LVEX119	197	206	9	1.1	
LVEX119	246	252	6	10.3	
LVEX119	276	280	4	6.5	

Table 2. Intercepts from Lakeview, this release

Update from Exploration on the Silverback Shear-zone, Comet Vale Project

The Silverback Shear-zone is a ~5km long, ~east-west oriented structure that runs parallel to and approximately 800m south of the King Kong shear-zone. Significant high grade gold mineralisation is present at the Cheer Prospect and the Happy Jack Prospects located along this structure (Table 3 below).

Significant intercepts Cheer & Happy Jack – mineralisation not in resource, >2000m of strike, from surface to a depth of 150m, completely open

- 2m @ 126.4 g/t Au fr. 52m C31 (253 gram-metre)
- 21m @ 11.6 g/t Au fr. 23m HJEX005 (243 gram-metre)
- 18m @ 7.8 g/t Au fr. 50m C6 (140 gm)
- 3m @ 26g/t Au fr. 51m CVEX006 (80 gm)
- 4m @ 18.8g/t Au fr. 108m CVEX016 (75 gm)
- 13m @ 5.3g/t Au fr. 44m C14 (69 gm)
- 14m @ 4.9g/t Au fr. 32m CVEX028 (69 gm)
- 5m @ 10.4g/t Au fr. 10m C15 (52 gm)

Table 3. Significant Intercepts from the Silverback Shear-zone

Historical workings from the early 1900's are present across the 5km length of the structure. No modern mining has taken place on any prospects from the Silverback shear-zone and none of this mineralisation is currently within a resource estimate. A gold in soil geochemistry anomaly is present on the part of the Silverback structure that has been surveyed recently which doesn't include the Happy Jack and Cheer areas.

Gorilla targeted extensions to previous drilling intercepts at the Cheer Prospect in a maiden drilling program in October 2024 and intersected significant gold mineralisation. Gorilla undertook maiden drilling at the Happy Jack Prospect in August 2025 and discovered significant high grade mineralisation

The mineralisation encountered is associated with quartz veining, pyrrhotite and pyrite sulphide development within quartz-carbonate veins and surrounding biotite-chlorite-actinolite altered and strongly deformed mafic units associated with the Silverback structure.

Drilling results from the Silverback Shear-zone in this release has discovered new mineralisation approximately halfway between the Cheer and the Happy Jack Prospects:

Hole ID	From	To	interval	Au g/t	Notes
CVEX046	72	76	4	1.4	
CVEX046	90	92	2	0.6	
CVEX046	133	135	2	0.6	
CVEX047	89	91	2	4.8	
CVEX048	62	66	4	0.5	
CVEX048	75	76	1	1.1	

CVEX049	93	95	2	0.6	
CVEX050	56	60	4	0.6	
CVEX051	94	95	1	2.7	

Table 4. Intercepts from Silverback Shear-zone, this release

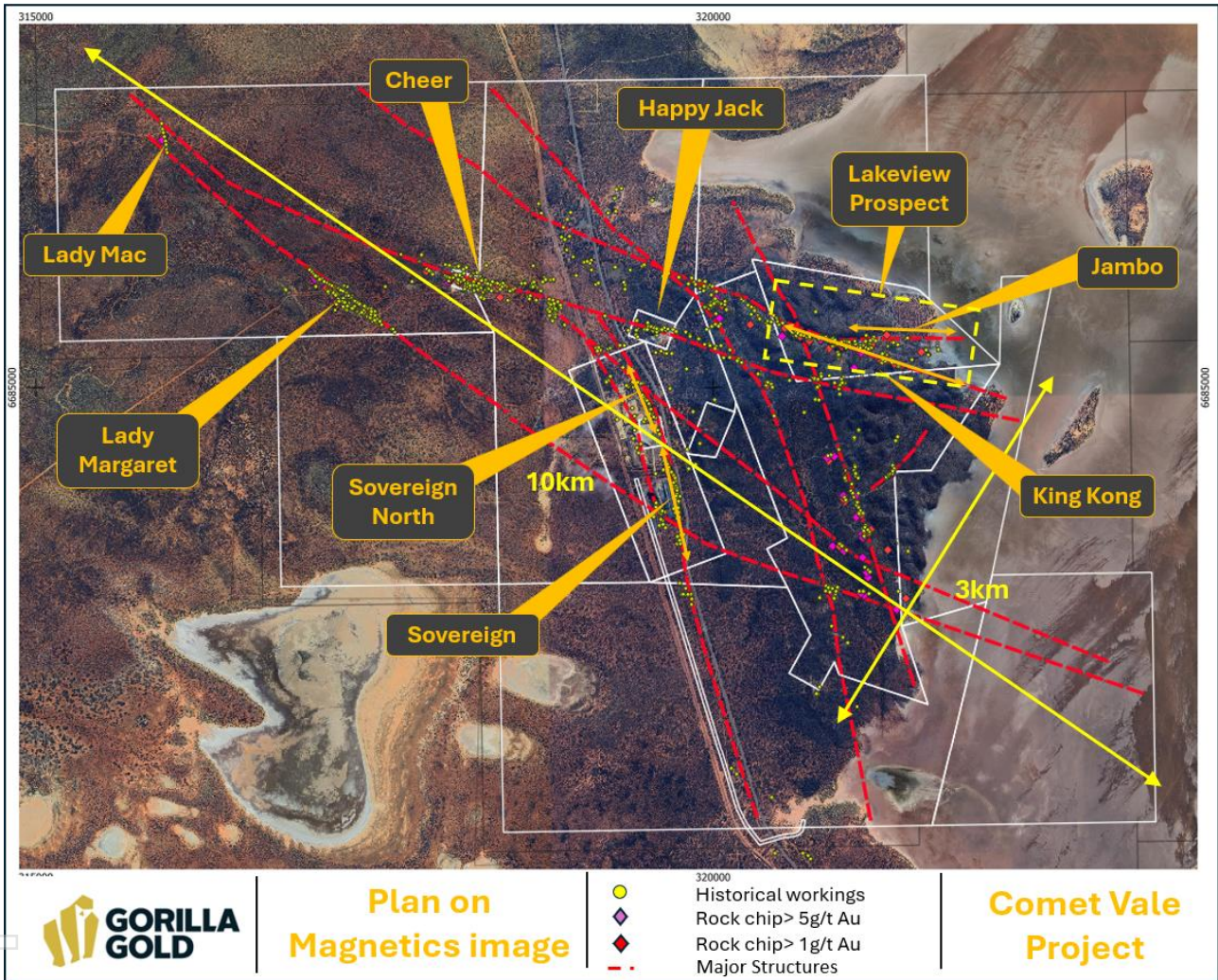


Figure 4. Regional map showing targets, and prospects at the Comet Vale Project

personal use only

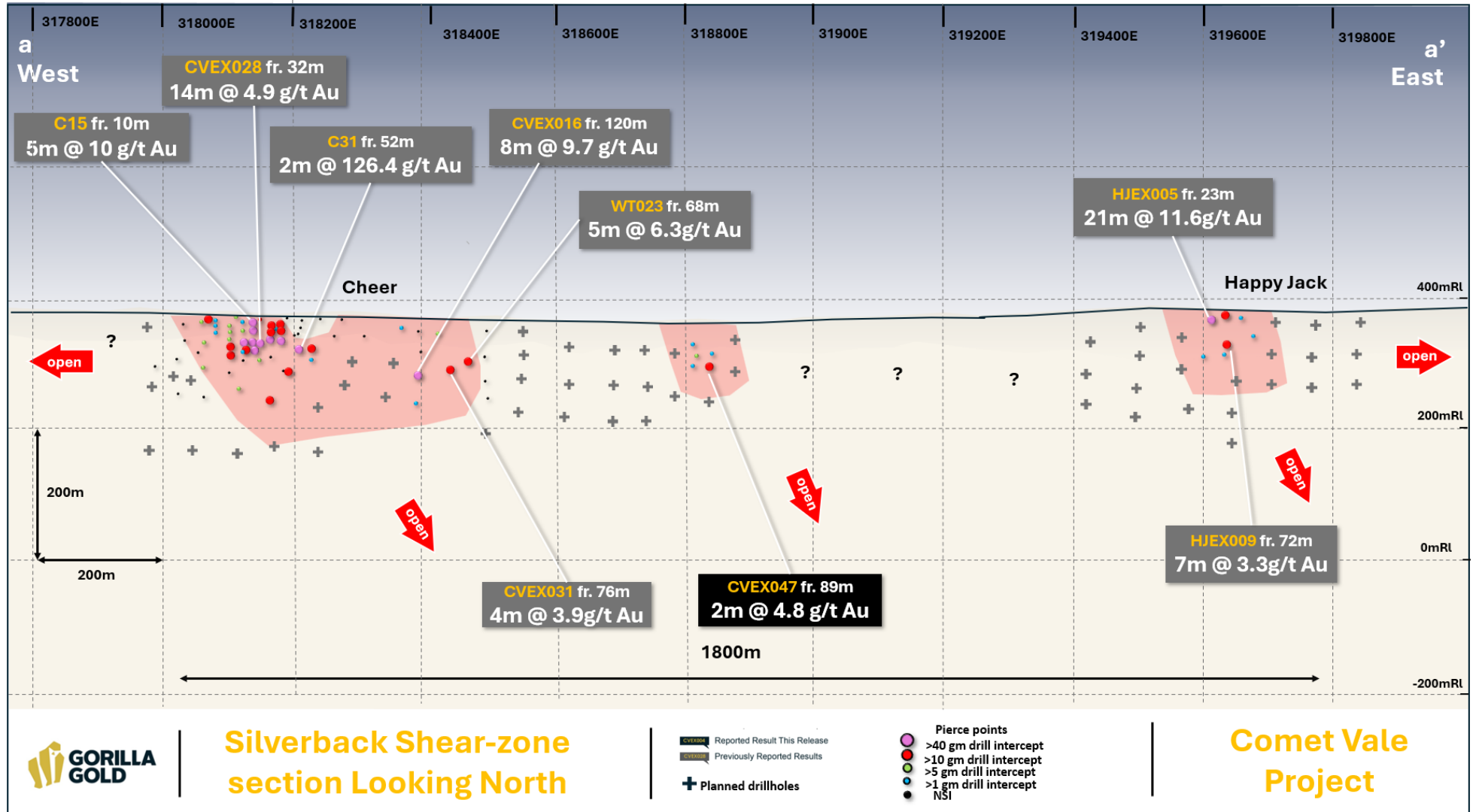


Figure 5. Long section, Silverback Shear-zone, Comet Vale Project



Next Steps at Comet Vale

Four drill rigs are currently operating at Comet Vale, targeting a major upgrade to the MRE in Q4 2025 and beginning to unlock the Camp Scale potential of the Project.

Drilling at Lakeview is targeting major down-dip potential utilising three diamond drill rigs. Lakeview has demonstrated significant thick high-grade intercepts.

Other exploration and growth drilling is targeting the Silverback trend, including Happy Jack and Cheer as well as Sovereign North (see Figures 4,6,7).

Geophysics and surface geochemical programs are ongoing at the project.

Further assays for Lakeview, Sovereign, Sovereign North, Happy Jack and Cheer are due to be returned in the coming weeks.

Metallurgical testwork is underway for Lakeview and other mine study and permitting work including hydrogeology and hydrology is being planned.

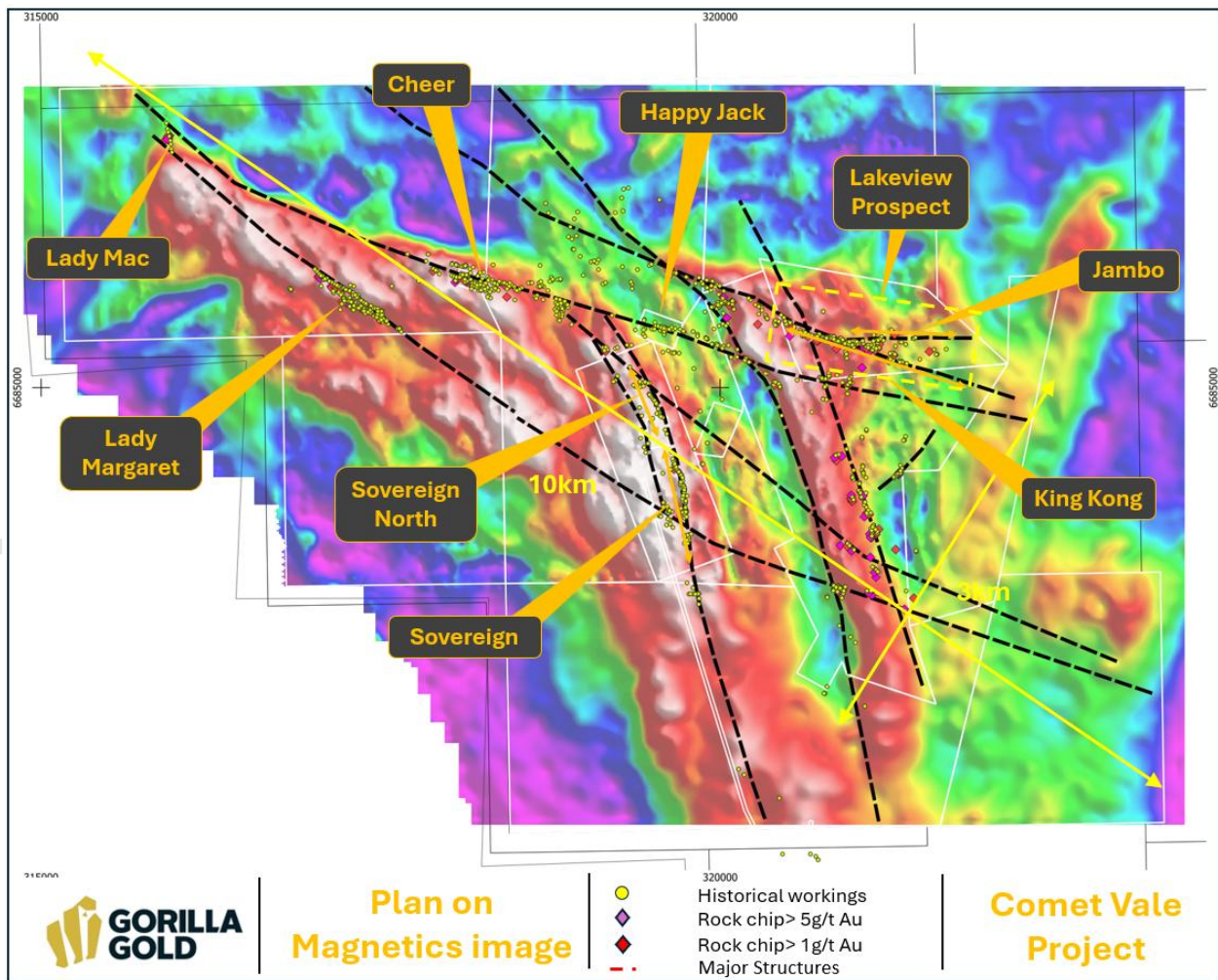


Figure 6. Regional map on Gravity image showing targets, and prospects at the Comet Vale Project

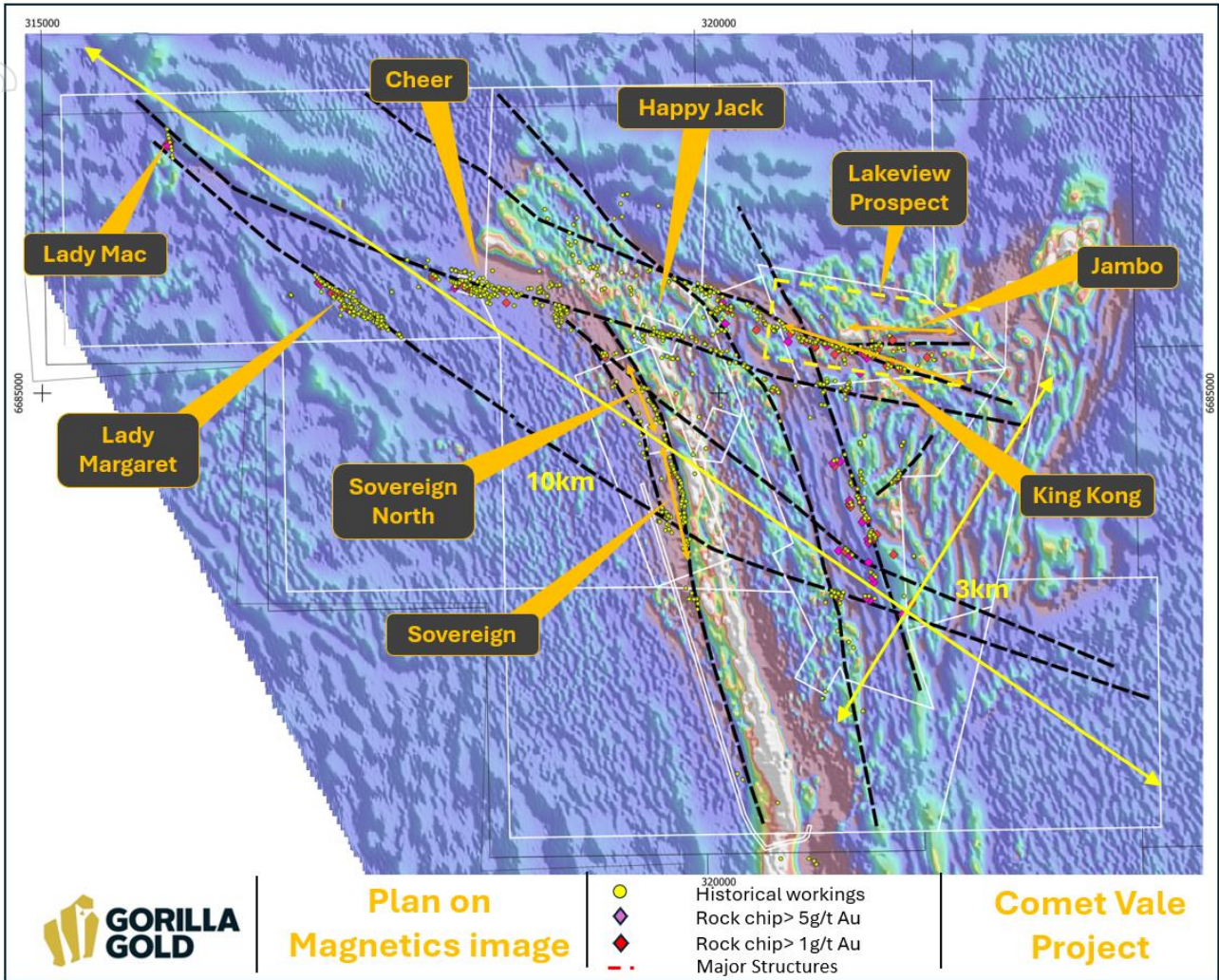


Figure 7. Regional map on magnetics image showing targets, and prospects at the Comet Vale Project

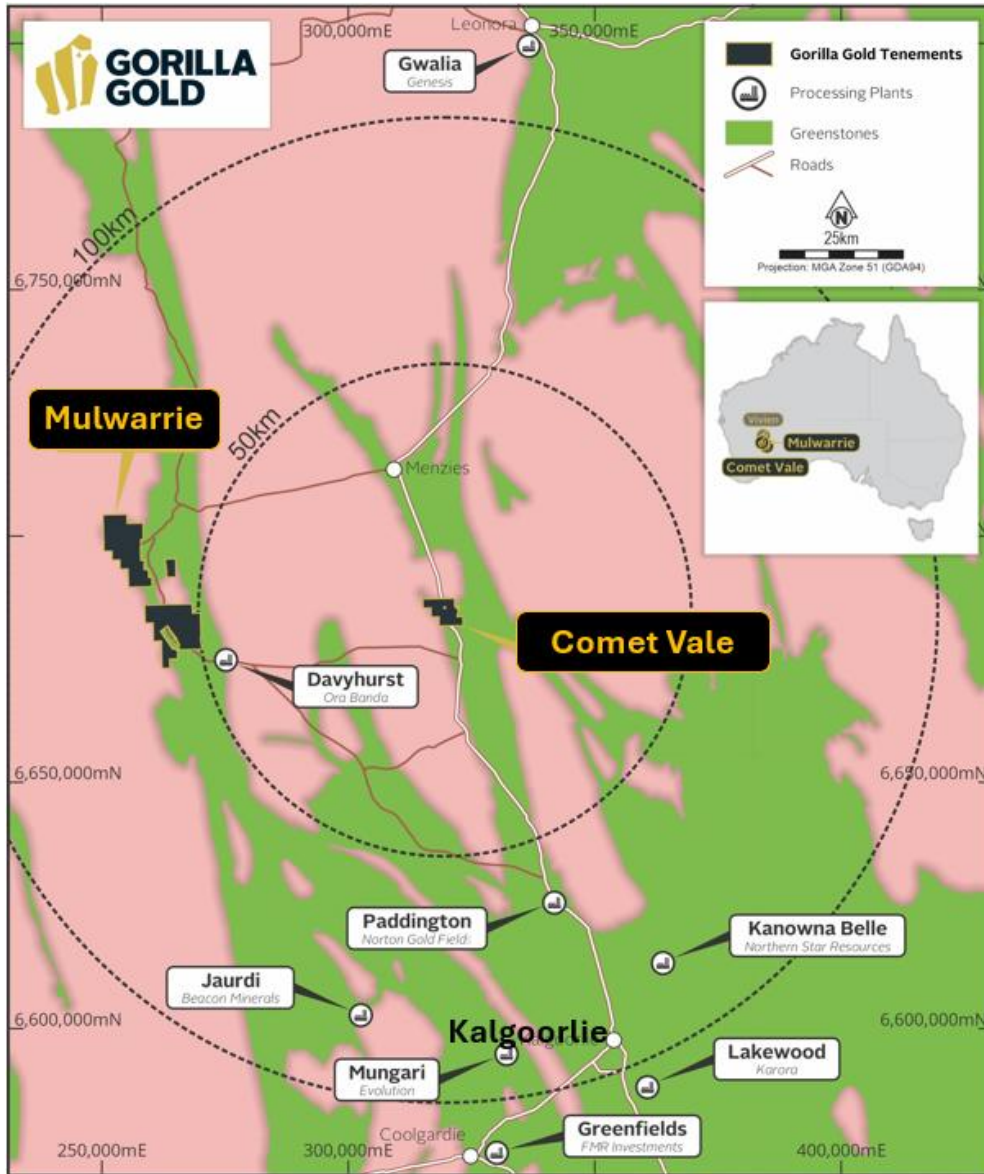


Figure 8. Overview map, Comet Vale and Mulwarrie Projects

This announcement has been authorised and approved for release by the Board.

Investor Enquiries
 Charles Hughes
 Chief Executive Officer
admin@gg8.com.au

Media Inquiries
 Nicholas Read
 Read Corporate
info@readcorporate.com.au

For personal use only

Competent Person's Statement:

The information in this announcement relates to exploration results for the Comet Vale Project which Mr. Charles Hughes has reviewed and approves. Mr. Hughes, who is an employee of Gorilla Gold Mines Ltd, a professional geoscientist and a Member of the Australian Institute of Geoscientists. Mr. Hughes has sufficient experience relevant to the style of mineralisation and type of deposits under consideration, and to the activities which have been undertaken to qualify as a Competent Person as defined in the 2012 Edition of the Joint Ore Reserves Committee (JORC) Australasian Code for Reporting of Exploration results, Mineral Resources and Ore Reserves. Mr. Hughes consents to the inclusion in this announcement of the matters based on this information in the form and context in which it appears.

Specific exploration results referred to in this announcement were originally reported in the following Company announcements in accordance with ASX Listing Rule 5.7:

Title	Date
High grade discovery at Happy Jack	21 August 2025
Bonanza Grades from Sovereign	19 August 2025
Comet Vale Drilling Update	14 August 2025
Results from Initial Metallurgy Testwork at Lakeview	5 August 2025
Lakeview Drilling update	7 July 2025
Update for Comet Vale and Mulwarrie	2 July 2025
Lakeview Update	6 June 2025
Parallel Structure Discovered at Lakeview	19 May 2025
Lakeview Update	8 May 2025
Lakeview Extended 125m Along Strike	17 April 2025
Further Intercepts from Lakeview Prospect	21 March 2025
Further High-Grade Hits from Lakeview & Sovereign Prospects	17 March 2025
Lakeview High-Grade Intercepts Grow Mineralisation	28 February 2025
Gold Intercepts from New Prospects at Comet Vale and Vivien	24 February 2025
Maiden Gold Drilling Results at Cheer	6 November 2024
LRL Set to Acquire Vivien Project and 100% of Comet Vale	17 July 2024
Comet Vale Mineral Resource Estimate	11 April 2023

The Company confirms that it is not aware of any information or data that materially affects the information included in the said original announcements and the form and context in which the Competent Persons' findings are presented have not materially modified from the original market announcements.

The current Mineral Resource Statement for the Comet Vale Project:

Comet Vale Depleted Resource as of 03/09/2020, Au>=0.5g/t (OP) and Au>=2.5g/t (UG)			
Category	Tonnage	Au Grade (g/t)	Au Ounces
Indicated	310,868	5.61	56,027
Inferred	308,620	4.00	39,683
Total	619,489	4.81	95,710

The Company is not aware of any new information or data that materially affects the information as previously released on 11 April 2023 and all material assumptions and technical parameters underpinning the estimates continue to apply and have not materially changed.

The current Mineral Resource Statement for the Mulwarrie Project:

Mulwarrie Mineral Resource Estimate Summary (0.5g/t cut-off Open pit, 1.1 g/t Underground)			
Category	Tonnage (Mt)	Au Grade (g/t)	Au Ounces
Indicated	1.3	2.8	110,000
Inferred	1.8	4.2	240,000
Total	3	3.6	350,000

The Company confirms that it is not aware of any new information or data that materially affects the information as previously released on 4 August 2025 and all material assumptions and technical parameters underpinning the estimate continue to apply and have not materially changed.

APPENDIX 1 NEW COLLAR INFORMATION COMET VALE

Prospect	Hole_ID	Depth	Hole_Type	Grid	East	North	RL	dip	azi
Lakeview	LVEX119		RC	GDA94 z 51	321344	6685340	368	59	211
Regional	CVEX046	140	RC	GDA94 z 51	318815	6685535	369	61	32
Regional	CVEX047	100	RC	GDA94 z 51	318828	6685562	369	60	31
Regional	CVEX048	80	RC	GDA94 z 51	318842	6685587	369	61	30
Regional	CVEX049	102	RC	GDA94 z 51	318805	6685583	369	60	32
Regional	CVEX050	80	RC	GDA94 z 51	318814	6685602	370	61	31
Regional	CVEX051	120	RC	GDA94 z 51	318758	6685564	369	59	30

APPENDIX 3 JORC TABLES

Section 1 Sampling Techniques and Data

(Criteria in this section apply to all succeeding sections.)

Criteria	JORC Code explanation	Comments
Sampling techniques	<ul style="list-style-type: none"> Nature and quality of sampling (e.g. cut channels, random chips, or specific specialised industry standard measurement tools appropriate to the minerals under investigation, such as down hole gamma sondes, or handheld XRF instruments, etc). These examples should not be taken as limiting the broad meaning of sampling. Include reference to measures taken to ensure sample representivity and the appropriate calibration of any measurement tools or systems used. Aspects of the determination of mineralisation that are Material to the Public Report. In cases where 'industry standard' work has been done this would be relatively simple (e.g. 'reverse circulation drilling was used to obtain 1 m samples from which 3 kg was pulverised to produce a 30 g charge for fire assay'). In other cases, more explanation may be required, such as where there is coarse gold that has inherent sampling problems. Unusual commodities or mineralisation types (e.g. submarine nodules) may warrant disclosure of detailed information. 	<ul style="list-style-type: none"> RC drilling - samples collected as 4m composites and in areas where interesting lithology, alteration, mineralisation or veining was encountered, 1m splits were taken. Composite samples are collected from samples piles, 1m splits are taken for every metre from the cyclone with duplicate samples taken at the instruction of the field geologist from the second chut on the cone. DD drilling has samples collected as half core in intervals between 0.3-1m based on lithology. Samples collected by GG8 field crew and submitted to ALS Laboratory in Kalgoorlie, WA. All samples are considered to be representative for the manner in which they are used. The samples were analysed using the photon assay method which uses a 0.5kg sample and requires minimal handling. The samples are riffle split at the lab and crushed to 80% passing 2mm to ensure homogeneity as uniform sample distribution is important to a quality analysis.
Drilling techniques	<ul style="list-style-type: none"> Drill type (e.g. core, reverse circulation, open-hole hammer, rotary air blast, auger, Bangka, sonic, etc) and details (e.g. core diameter, triple or standard tube, depth of diamond tails, face-sampling bit or other type, whether core is oriented and if so, by what method, etc). 	<ul style="list-style-type: none"> RC drilling was completed by several contractors using multiple modern RC rigs capable of significant drill depths. DD drilling was completed by contractors using multiple modern DD rigs. All drill rigs utilised by GG8 are industry best standard.
Drill sample recovery	<ul style="list-style-type: none"> Method of recording and assessing core and chip sample recoveries and results assessed. 	<ul style="list-style-type: none"> RC sample recovery was qualitatively assessed by the field geologists. Good recoveries were had. DD recovery measured actual core length between drillers blocks to the nearest cm. Sample weights are recorded by the laboratory and average 3kg.
	<ul style="list-style-type: none"> Measures taken to maximise sample recovery and ensure representative nature of the samples 	<ul style="list-style-type: none"> Sample depths were cross-checked regularly. The cyclone was regularly cleaned to ensure no material build up and sample material was checked for any potential downhole contamination. The drilling sample recoveries/quality are acceptable and are appropriately representative for the style of mineralisation.
	<ul style="list-style-type: none"> Whether a relationship exists between sample recovery and grade and whether sample bias may have occurred due to preferential loss/gain of fine/coarse material. 	<ul style="list-style-type: none"> no obvious sample recovery biases or biases related to loss or gain of fines have been identified.

For personal use only

Logging	<ul style="list-style-type: none"> Whether core and chip samples have been geologically and geotechnically logged to a level of detail to support appropriate Mineral Resource estimation, mining studies and metallurgical studies. 	<ul style="list-style-type: none"> Logged for geology on the 1m intervals with chips washed and stored in chip trays by the geologist. Logging was inputted directly into the onsite laptops using suitable Company logging. DD core stored in trays with every metre logged. Logging is of a qualitative nature.
	<ul style="list-style-type: none"> Whether logging is qualitative or quantitative in nature. Core (or costean, channel, etc) photography. 	<ul style="list-style-type: none"> RC chips and DD were logged for lithology, colour, weathering, texture and minerals present. Structural measurements and geotechnical data were recorded on DD core
	<ul style="list-style-type: none"> The total length and percentage of the relevant intersections logged. 	<ul style="list-style-type: none"> N/A
Sub-sampling techniques and sample preparation	<ul style="list-style-type: none"> If core, whether cut or sawn and whether quarter, half or all cores taken. 	<ul style="list-style-type: none"> Core is sawn with half cores taken for assay
	<ul style="list-style-type: none"> If non-core, whether riffled, tube sampled, rotary split, etc and whether sampled wet or dry. 	<ul style="list-style-type: none"> RC drilling single 1 metre splits were automatically taken at the time of drilling by a cone splitter attached to the cyclone. 4m composite samples were taken from sample piles. Samples have been dry. Samples are then riffle split at the lab into 0.5kg samples and crushed to 2mm prior to photon assay with a particle size distribution test to ensure 80% passing the 2mm threshold.
	<ul style="list-style-type: none"> For all sample types, the nature, quality and appropriateness of the sample preparation technique. 	<ul style="list-style-type: none"> The technique was appropriate for the work undertaken. During RC logging samples that showed mineralisation, veining or alteration had 1m split samples collected. 1m split samples are later taken from where 4m composites show >0.2g/t gold anomalism. During DD logging any sulphide veining or alteration were sampled.
	<ul style="list-style-type: none"> Quality control procedures adopted for all sub-sampling stages to maximise representivity of samples. 	<ul style="list-style-type: none"> QAQC reference samples and duplicates were submitted by GG8. In house standards and blanks were also inserted by ALS.
	<ul style="list-style-type: none"> Measures taken to ensure that the sampling is representative of the in-situ material collected, including for instance results for field duplicate/second-half sampling. 	<ul style="list-style-type: none"> 1m samples are automatically bagged from the cyclone, field duplicates are taken from a second chute off the splitter. DD duplicates are taken
	<ul style="list-style-type: none"> Whether sample sizes are appropriate to the grain size of the material being sampled. 	<ul style="list-style-type: none"> All RC samples are collected to approximately 1-5 kg. The sample sizes taken are appropriate relative to the style of mineralisation and analytical methods undertaken. DD sample size is appropriate
	<ul style="list-style-type: none"> The nature, quality and appropriateness of the assaying and laboratory procedures used and whether the technique is considered partial or total. 	<ul style="list-style-type: none"> All samples were sent to ALS laboratory in Kalgoorlie. Photon Assay method has shown to provide quick turnaround times and high accuracy.
Quality of assay data and laboratory tests	<ul style="list-style-type: none"> For geophysical tools, spectrometers, handheld XRF instruments, etc, the parameters used in determining the analysis including instrument make and model, reading times, calibrations factors applied and their derivation, etc. 	<ul style="list-style-type: none"> All analytical results listed are from an accredited laboratory using photon assay method with fire assay as a check method.
	<ul style="list-style-type: none"> Nature of quality control procedures adopted (e.g. standards, blanks, duplicates, external laboratory checks) and whether acceptable levels of accuracy (i.e. lack of bias) and precision have been established. 	<ul style="list-style-type: none"> Certified Reference Materials (CRMs) are included in each batch to ensure the reliability of the assay. These CRMs, such as OREAS254C, OREAS230, and OREAS241, are specifically chosen for photon assay to maintain quality standards and were evaluated against published certificates. The standard deviation was minimal for samples. Selected photon assays over a range of grades and from different parts of orebodies are umpire checked with Fire Assays and so far shows no material difference in reported grades.

Verification of sampling and assaying	<ul style="list-style-type: none"> The verification of significant intersections by either independent or alternative company personnel. 	<ul style="list-style-type: none"> External verification has not been carried out, but values were checked against logging and photographs to ensure the intersected Au values are in line with logged alteration, mineralisation or veining. Significant intercepts have been verified by the Exploration Manager, the CEO and Principal consulting geologist.
	<ul style="list-style-type: none"> The use of twinned holes 	<ul style="list-style-type: none"> No twinned holes at this stage
	<ul style="list-style-type: none"> Documentation of primary data, data entry procedures, data verification, data storage (physical and electronic) protocols. 	<ul style="list-style-type: none"> Data was captured directly into specific geological logging software. Assay files have been sent directly from the lab to database manager to avoid operator errors. All physical sampling sheets are filed and scanned electronically and submissions to the lab checked to ensure that no samples are missing or incorrect IDs.
	<ul style="list-style-type: none"> Discuss any adjustment to assay data. 	<ul style="list-style-type: none"> No adjustments were made to the assay data.
Location of data points	<ul style="list-style-type: none"> Accuracy and quality of surveys used to locate drill holes (collar and down-hole surveys), trenches, mine workings and other locations used in Mineral Resource estimation. 	<ul style="list-style-type: none"> Samples were located using handheld Garmin GPS, the GPS is accurate within 3-5m.
	<ul style="list-style-type: none"> Specification of the grid system used. 	<ul style="list-style-type: none"> All collar locations and maps quoted in this Report are using the GDA1994 MGA, Zone 51 coordinate system.
	<ul style="list-style-type: none"> Quality and adequacy of topographic control. 	<ul style="list-style-type: none"> Topography based on detailed topographic surveys.
Data spacing and distribution	<ul style="list-style-type: none"> Data spacing for reporting of Exploration Results. 	<ul style="list-style-type: none"> Data spacing is varied
	<ul style="list-style-type: none"> Whether the data spacing, and distribution is sufficient to establish the degree of geological and grade continuity appropriate for the Mineral Resource and Ore Reserve estimation procedure(s) and classifications applied. 	<ul style="list-style-type: none"> N/A
	<ul style="list-style-type: none"> Whether sample compositing has been applied. 	<ul style="list-style-type: none"> Intercepts are aggregated based upon 0.5g/t Au cut off grade and 3m of dilution material.
Orientation of data in relation to geological structure	<ul style="list-style-type: none"> Whether the orientation of sampling achieves unbiased sampling of possible structures and the extent to which this is known, considering the deposit type. 	<ul style="list-style-type: none"> The relationship between the drilling orientation and the orientation of mineralised structures is not considered to have introduced a sampling bias. Most holes have been drilled perpendicular to the main orientation of the interpreted mineralised zone.
	<ul style="list-style-type: none"> If the relationship between the drilling orientation and the orientation of key mineralised structures is considered to have introduced a sampling bias, this should be assessed and reported if material. 	<ul style="list-style-type: none"> No drilling orientation related sampling bias has been identified at the Project. Some orientation changes were made to historic holes and the main structure was intersected at the interpreted depth.
Sample security	<ul style="list-style-type: none"> The measures taken to ensure sample security. 	<ul style="list-style-type: none"> Samples were transported from the field to the lab by GG8 personnel.
Audits or reviews	<ul style="list-style-type: none"> The results of any audits or reviews of sampling techniques and data. 	<ul style="list-style-type: none"> GG8 undertakes continuous audits and reviews of all its field processes.

Section 2 Reporting of Exploration Results

(Criteria listed in the preceding section also apply to this section.)

Criteria	JORC Code explanation	Commentary
Mineral tenement and land tenure status	<ul style="list-style-type: none"> Type, reference name/number, location and ownership including agreements or material issues with third parties such as joint ventures, partnerships, overriding royalties, native title interests, historical sites, wilderness or national park and environmental settings. 	<p>COMET VALE Gorilla Gold Mines Ltd is in a Joint Venture with Sand Queen Gold Mines Pty. LRL carries 51% and SQGM carries 49% of all Mining Leases at Comet Vale listed below. An overriding royalty by Reed Resources is maintained for 1% of the gold mined at Comet Vale. In July 2024 the Company announced the option for the remaining 49% for a deferred \$3M to be paid within 12 months, the option agreement was completed in September 2024.</p> <p>Kakara Part A has just been granted Native Title over the project area. The Company does not at present have any agreements with Kakara part A but are in the process of engagement.</p> <p>M29/197,M29/198,M29/199,M29/200,M29/201,M29/232,M29/235,M29/233,M29/185,M29/270,M29/52,M29/35,M29/85,M29/186,M29/321</p>
	<ul style="list-style-type: none"> The security of the tenure held at the time of reporting along with any known impediments to obtaining a licence to operate in the area. 	<ul style="list-style-type: none"> No known impediments exist with respect to the exploration or development of the tenements.
Exploration done by other parties	<ul style="list-style-type: none"> Acknowledgment and appraisal of exploration by other parties. 	<ul style="list-style-type: none"> See previous announcements. In particular ASX announcement, 13 September 2024, <i>Review of Historical Vivien and Comet Vale Databases</i>.
Geology	<ul style="list-style-type: none"> Deposit type, geological setting and style of mineralisation. 	<p>COMET VALE Archean orogenic gold mineralisation associated with major structures and mafic-ultramafic stratigraphy with intermediate intrusives adjacent to intracratonic monzogranites, gold mineralisation is associated with quartz veining, pyrrhotite, chalcopyrite, galena, sphalerite, and actinolite-biotite-chlorite alteration</p>
Drill hole information	<ul style="list-style-type: none"> A summary of all information material to the understanding of the exploration results including a tabulation of the following information for all Material drill holes: <ul style="list-style-type: none"> easting and northing of the drill hole collar elevation or RL (Reduced Level – elevation above sea level in metres) of the drill hole collar dip and azimuth of the hole down hole length and interception depth hole length. 	<ul style="list-style-type: none"> Tables reported in the announcement.

For personal use only

	<ul style="list-style-type: none"> If the exclusion of this information is justified on the basis that the information is not Material and this exclusion does not detract from the understanding of the report, the Competent Person should clearly explain why this is the case. 	<ul style="list-style-type: none"> No information material to the understanding of the exploration results has been excluded.
Data aggregation methods	<ul style="list-style-type: none"> In reporting Exploration Results, weighting averaging techniques, maximum and/or minimum grade truncations (eg cutting of high grades) and cut-off grades are usually Material and should be stated. 	<ul style="list-style-type: none"> Assay results reported here have been length weighted. No metal equivalent calculations were applied.
	<ul style="list-style-type: none"> Where aggregate intercepts incorporate short lengths of high-grade results and longer lengths of low grade results, the procedure used for such aggregation should be stated and some typical examples of such aggregations should be shown in detail. 	<ul style="list-style-type: none"> All samples were 1m or 4m samples were reported as returned.
	<ul style="list-style-type: none"> The assumptions used for any reporting of metal equivalent values should be clearly stated. 	<ul style="list-style-type: none"> No weighting used.
Relations hip between mineralis ation widths and intercept lengths	<ul style="list-style-type: none"> These relationships are particularly important in the reporting of Exploration Results. 	<ul style="list-style-type: none"> All samples reported are downhole width.
	<ul style="list-style-type: none"> If the geometry of the mineralisation with respect to the drill hole angle is known, its nature should be reported. 	<ul style="list-style-type: none"> Mineralization is generally perpendicular to drilling orientation.
	<ul style="list-style-type: none"> If it is not known and only the down hole lengths are reported, there should be a clear statement to this effect (eg 'down hole length, true width not known'). 	<ul style="list-style-type: none"> All intercepts are down hole lengths, true widths not yet determined.
Diagrams	<ul style="list-style-type: none"> Appropriate maps and sections (with scales) and tabulations of intercepts should be included for any significant discovery being reported These should include, but not be limited to a plan view of drill hole collar locations and appropriate sectional views. 	<ul style="list-style-type: none"> Plans and sections are located in the body of the announcement.
Balanced reporting	<ul style="list-style-type: none"> Where comprehensive reporting of all Exploration Results is not practicable, representative reporting of both low and high grades and/or widths should be practiced to avoid misleading reporting of Exploration Results. 	<ul style="list-style-type: none"> All samples were reported for Au and their context discussed.

For personal use only

<p>Other substantive exploration data</p>	<ul style="list-style-type: none"> Other exploration data, if meaningful and material, should be reported including (but not limited to): geological observations; geophysical survey results; geochemical survey results; bulk samples – size and method of treatment; metallurgical test results; bulk density, groundwater, geotechnical and rock characteristics; potential deleterious or contaminating substances. 	<ul style="list-style-type: none"> All other relevant data has been included within this report.
<p>Further work</p>	<ul style="list-style-type: none"> The nature and scale of planned further work (eg tests for lateral extensions or depth extensions or large-scale step-out drilling). Diagrams clearly highlighting the areas of possible extensions, including the main geological interpretations and future drilling areas, provided this information is not commercially sensitive. 	<p>COMET VALE Drilling is ongoing, refer to end of text for more comprehensive update.</p> <ul style="list-style-type: none"> Maps plans and sections are all found in the body of the text.