

9th September 2025

Approval received for Stage One at Tower Hill

Start of mining will be timed to align with the mill expansion strategy

HIGHLIGHTS

- ▶ Genesis has **received approval** from Department of Mines, Petroleum and Exploration for the **Stage 1 Mining Proposal and Mine Closure Plan at Tower Hill**
- ▶ Receipt of the Stage 1 approval is **within the development schedule** for **Stage 1 Mining outside the existing rail reserve** (refer Figure 1 - Stage 1); **Stage 1 does not impact the nearby rail line**
- ▶ Agreements with rail users relating to shortening the rail line, as required for Stage 2, are expected to be completed by the end of this calendar year (refer Figure 1 - Proposed rail termination)
- ▶ The Stage 1 approval means **Tower Hill is on track for mine development in FY27 and first ore in FY28**
- ▶ Tower Hill is located 1km from the Leonora processing plant, currently the subject of an expansion study
- ▶ **Further details on Tower Hill will be provided in Genesis' updated long-term plan set for the June half 2026**
- ▶ The Tower Hill mine plan comprises a single open pit with a 1Moz Ore Reserve at 2g/t¹, strike length of 1.4km and operating strip ratio of 9:1 (waste:ore)
- ▶ Abundance of >200gm drill intercepts including 55m @ 3.9g/t, 50m @ 5.0g/t, 51m @ 4.4g/t, 50m @ 4.7g/t, 44m @ 5.4g/t, 49m @ 5.5g/t, 51m @ 4.6g/t, 50m @ 4.8g/t²; Only drill tested to ~450m depth
- ▶ Underground transition study advancing

Genesis Managing Director Raleigh Finlayson said:

"The Stage One approval is an important piece of our accelerated ASPIRE 400 growth jigsaw.

"It ensures we have the flexibility to align the start of mining at Tower Hill with the mill expansion strategy, enabling us to optimise the timing of costs and revenues.

"When combined with the recently acquired Focus assets at Laverton, we have a pipeline of organic growth opportunities which in turn give us very valuable processing flexibility".

This announcement is approved for release by Raleigh Finlayson, Managing Director, Genesis Minerals Limited.

For further information, please contact:

Investors and Media:

Troy Irvin

Corporate Development Officer

T: +61 8 6323 9050

investorrelations@genesisminerals.com.au

Media:

Paul Armstrong

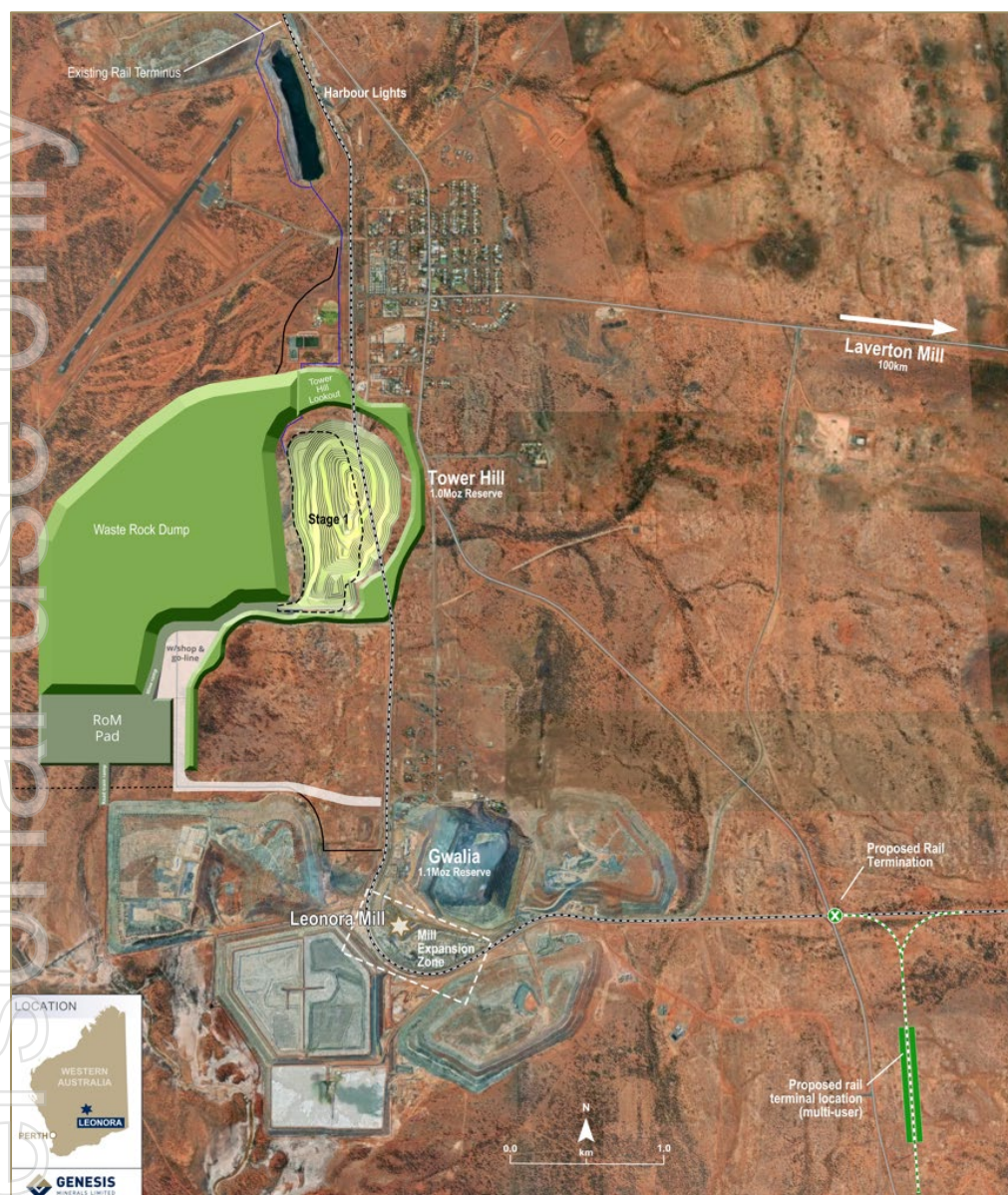
Read Corporate

T: +61 8 9388 1474

info@readcorporate.com.au

1. Refer ASX announcement 8th April 2025 "Reserves rise to 3.7Moz, underpinning ASPIRE 400 strategy";
2. Exploration Results for Tower Hill are extracted from Genesis' ASX announcement 21st March 2024 "Growth strategy underpinned by robust Reserves".

Figure 1. Tower Hill map



Forward Looking Statements

Some statements in this announcement regarding estimates or future events are forward-looking statements. They include indications of, and guidance on, future matters. Forward-looking statements include, but are not limited to, statements preceded by words such as “planned”, “expected”, “projected”, “estimated”, “may”, “scheduled”, “intends”, “anticipates”, “believes”, “potential”, “could”, “nominal”, “conceptual” and similar expressions. Forward-looking statements, opinions and estimates included in this Announcement are based on assumptions and contingencies which are subject to change without notice, as are statements about market and industry trends, which are based on interpretations of current market conditions.

Forward-looking statements are provided as a general guide only and should not be relied on as a guarantee of future performance. Forward-looking statements may be affected by a range of variables and risks that could cause actual results to differ from estimated results and may cause Genesis’ actual performance and financial results in future periods to materially differ from any projections of future performance or results expressed or implied by such forward-looking statements. These risks and uncertainties include but are not limited to liabilities inherent in mine development and production, geological, mining and processing technical problems, the inability to obtain any additional mine licenses, permits and other regulatory approvals required in connection with mining and third party processing operations, competition for among other things, capital, acquisition of reserves, undeveloped lands and skilled personnel, incorrect assessments of the value of acquisitions, changes in commodity prices and exchange rate, currency and interest fluctuations, various events which could disrupt operations and/or the transportation of mineral products, including labour stoppages and severe weather conditions, the demand for and availability of transportation services, the ability to secure adequate financing and management’s ability to anticipate and manage the foregoing factors and risks. These and other factors should be considered carefully and readers should not place undue reliance on such forward-looking information. There can be no assurance that forward-looking statements will prove to be correct.

Competent Person Statements

The information in this announcement that relates to:

- The information relevant to the Mineral Resources and Ore Reserve estimates for Genesis’ assets (excluding the Focus Laverton assets) is extracted from Genesis’ ASX announcement dated 8th April 2025 “Reserves rise to 3.7Moz, underpinning ASPIRE 400 strategy” and is available at www.genesisminerals.com.au and www.asx.com.au. The Company confirms that it is not aware of any new information or data that materially affects the information included in the original market announcements, and in the case of estimates of Mineral Resources or Ore Reserves, that all material assumptions and technical parameters underpinning the estimates in the relevant market announcements continue to apply and have not materially changed. The Company confirms that the form and context in which the Competent Person’s findings are presented have not been materially modified from the original market announcements.
- The information in this report that relates to Exploration Results is extracted from the report dated 4 March 2024 “Growth strategy underpinned by robust Reserves” and is available at www.genesisminerals.com.au and www.asx.com.au. The Company confirms that it is not aware of any new information or data that materially affects the information included in the original market announcement. The Company confirms that the form and context in which the Competent Person’s findings are presented have not been materially modified from the original market announcement.

No Liability

Genesis Minerals Limited has prepared this announcement based on information available to it. No representation or warranty, express or implied, is made as to the fairness, accuracy, completeness or correctness of the information, opinions or conclusions contained in this announcement. To the maximum extent permitted by law, none of Genesis Minerals Limited, its directors, officers, employees, associates, advisers and agents, nor any other person accepts any liability, including, without limitation, any liability arising from fault or negligence on the part of any of them or any other person, for any loss arising from the use of this announcement or its contents or otherwise arising in connection with it.

This announcement is not an offer, invitation, solicitation, or other recommendation with respect to the subscription for, purchase or sale of any security, and neither this announcement nor anything in it shall form the basis of any contract or commitment whatsoever.

Appendix A - Reserve estimates*

2025 Ore Reserves

Project	Proved			Probable			Total		
	Tonnes (000's)	Grade (g/t Au)	Ounces (000's)	Tonnes (000's)	Grade (g/t Au)	Ounces (000's)	Tonnes (000's)	Grade (g/t Au)	Ounces (000's)
Leonora									
Gwalia	310	5.6	56	6,400	5.3	1,100	6,800	5.3	1,100
Tower Hill	-	-	-	15,000	2.0	1,000	15,000	2.0	1,000
Admiral Group	-	-	-	1,700	1.5	80	1,700	1.5	80
Orient Well Group	-	-	-	3,900	1.2	150	3,900	1.2	150
Ulysses Open Pit	820	2.6	69	620	1.9	38	1,400	2.3	110
Ulysses Underground	450	4.1	59	1,600	3.6	180	2,000	3.7	240
Bruno Lewis	-	-	-	5,000	1.0	170	5,000	1.0	170
Redcliffe Group	150	4.0	19	1,000	2.7	87	1,200	2.8	110
Total Leonora	1,700	3.7	200	36,000	2.4	2,800	37,000	2.5	3,000
Laverton									
Jupiter Group	-	-	-	7,700	0.9	220	7,700	0.9	220
Westralia Group	-	-	-	8,200	1.4	370	8,200	1.4	370
Lancefield Open Pit	-	-	-	800	1.6	41	800	1.6	41
Karridale	-	-	-	9,300	1.0	310	9,300	1.0	310
Beasley Creek	-	-	-	3,500	1.8	200	3,500	1.8	200
Total Laverton	-	-	-	30,000	1.2	1,100	30,000	1.2	1,100
Bardoc									
Zoroastrian	-	-	-	790	3.8	97	790	3.8	97
Total Bardoc	-	-	-	790	3.8	97	790	3.8	97
Grand Total	1,700	3.7	200	66,000	1.9	4,000	68,000	1.9	4,200

All figures reported to two significant figures. Rounding errors may occur. Rounding may result in apparent summation differences between tonnes, grade and contained metal content.

*Source: GMD ASX announcement 8th April 2025 "Reserves rise to 3.7Moz, underpinning ASPIRE 400 strategy" and GMD ASX announcement 26th May 2025 "Acquisition of Laverton Gold Project".