

11 September 2025

ASX RELEASE

Lady Lila Phase 2 Drill Results and Updated Mineral Resource Estimate

Highlights:

- Assays from Lady Lila Phase 2 drilling confirm high-grade Au mineralisation, open in all directions, including:
 - LLRC017 – 15m @ 1.3g/t Au (from 82m), including 1m @ 5.5g/t Au
 - LLRC023 – 3m @ 5.3g/t Au (from 40m), including 1m @ 15.1g/t Au
 - LLRC020 – 11m @ 1.4g/t Au (from 87m), including 1m @ 7.4g/t Au
- Upgraded JORC Compliant Mineral Resource of 1.2Mt @ 1.03g/t Au for 40,513 oz (0.5g/t cutoff)
- Discovery cost of \$33 per ounce for newly defined ounces.
- A third drilling campaign of approximately 2,000m is already planned to further test the extent of the mineralisation both along strike (north–south) and at depth, and will commence upon receiving POW approvals on nearby projects at Lady Magdalene and Lady Ada (under option agreement¹).

Forrestania Resources Limited (ASX: FRS) (“FRS” or “the Company”) is pleased to confirm the results from its phase 2 drill programme at the Lady Lila prospect, part of its Forrestania project, near Hyden in Western Australia.

As a result of the latest work and the phase 1 programme (completed in November 2021), the Company can now confirm its upgraded mineral resource estimate at the project of 1.2Mt @ 1.03g/t Au for 40,513 oz (0.5g/t cutoff).

¹ FRS ASX Release dated 11 August 2025 – Option for Major Gold Project Acquisition

For personal use only

Forrestania Resources' Chairman David Geraghty commented:

"These latest drilling results demonstrate the strong potential of our Lady Lila project, with significant intercepts confirming both the continuity and growth of the mineralised system. The upgraded Mineral Resources Estimate is a major milestone, highlighting the quality and scale of the project and reinforcing our confidence in its future development. We are committed to continuing value creation for shareholders as we advance exploration and unlock further upside."

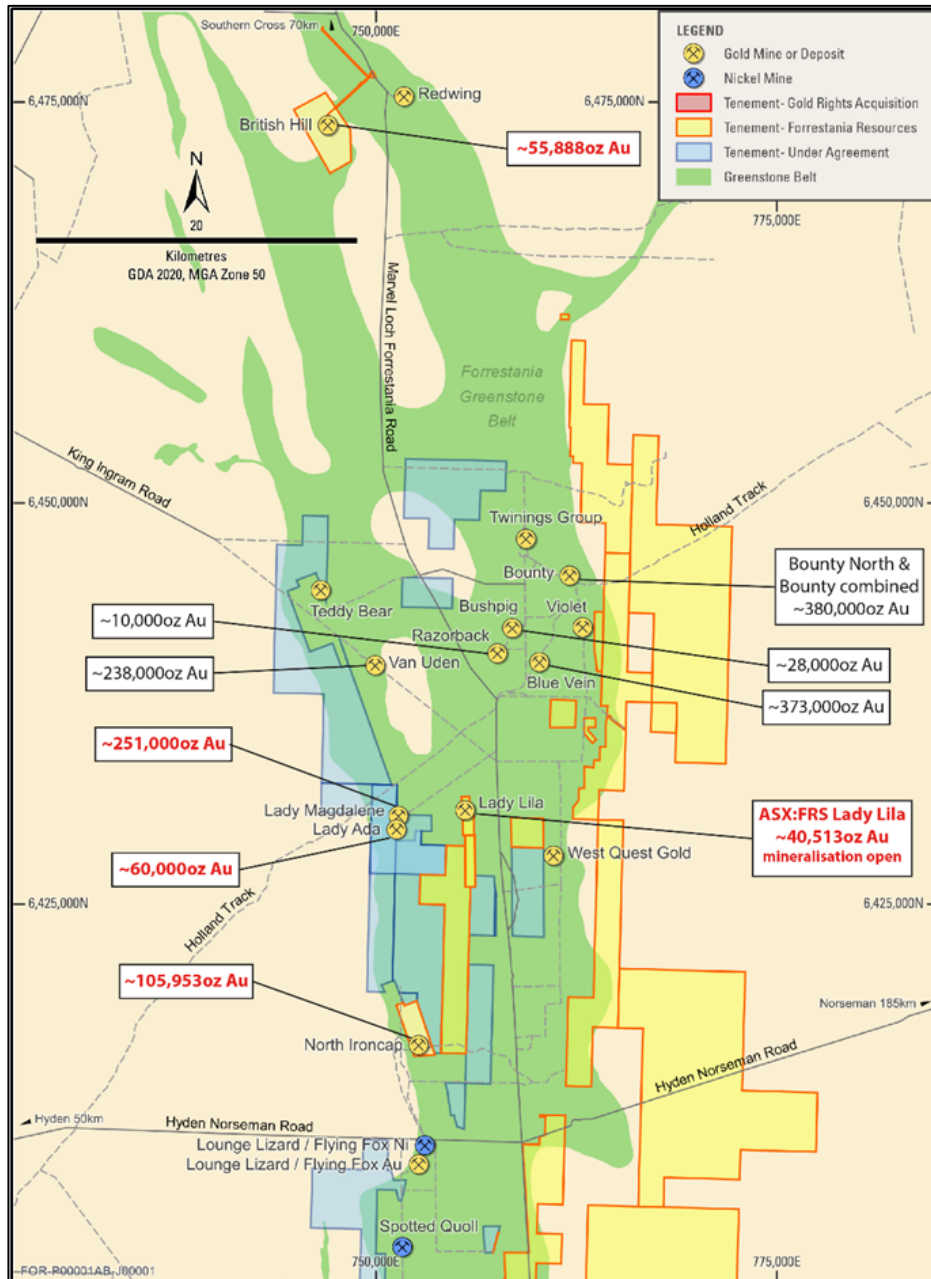


Figure 1. Forrestania Resource's Lady Lila prospect, in proximity to other historic pits, resources and current Au resources. (Total inferred and indicated resource numbers at Lady Ada and Lady Magdalene from ASX: CLZ Lady Ada and Lady Magdalene mining lease granted, 22nd May 24; Total measured, inferred and indicated resource numbers for Van Uden, Blue Vein, Bushpig, Razorback and Bounty from ASX: KDR Kidman agrees to acquire 1Moz Mt Holland gold field in WA, 18th December 2015, Total measured, inferred and indicated resource numbers for British Hill from ASX:FRS FRS Agree to Acquire British Hill Gold Project, 1st August 2025, Total measured, inferred and indicated resource numbers for North Ironcap from ASX:FRS FRS Agrees to Acquire North Ironcap Gold Project, 14th August 2025).

Lady Lila Gold Project

About the Project

The Lady Lila deposit sits within Exploration Licence P77/4325, 7km south-west of the historic + 1Moz Bounty Gold Mine 120km south of Southern Cross in Western Australia and comprises part of the Company's Forrestania North Project. The FRS drilling programmes have confirmed high-grade gold at depth with open mineralisation in all directions extending the mineralisation 150m to the north.

The deposit hosts a JORC (2012) Compliant Mineral Resource of 40,513oz Au using a 0.5g/t lower cutoff as per below:

Table 1. JORC compliant inferred Mineral Resource at Lady Lila using a 0.5g/t lower cutoff

	Tonnes	Grade (g/t Au)	Ounces Au
Inferred (≥ 0.5 g/t Au)	575,946	1.20	22,204
Indicated (≥ 0.5 g/t Au)	646,212	0.88	18,309
Total	1,222,158	1.03	40,513

Phase 2 Drill Programme

The Company completed its maiden drilling programme (14 RC holes for 1,823 m) in November 2021 (Figure 2) and is pleased to announce the results from the follow-up Phase 2 programme (15 RC holes for 1,566 m) drilled in May 2025 at the Lady Lila prospect (Figure 2).

For personal use only

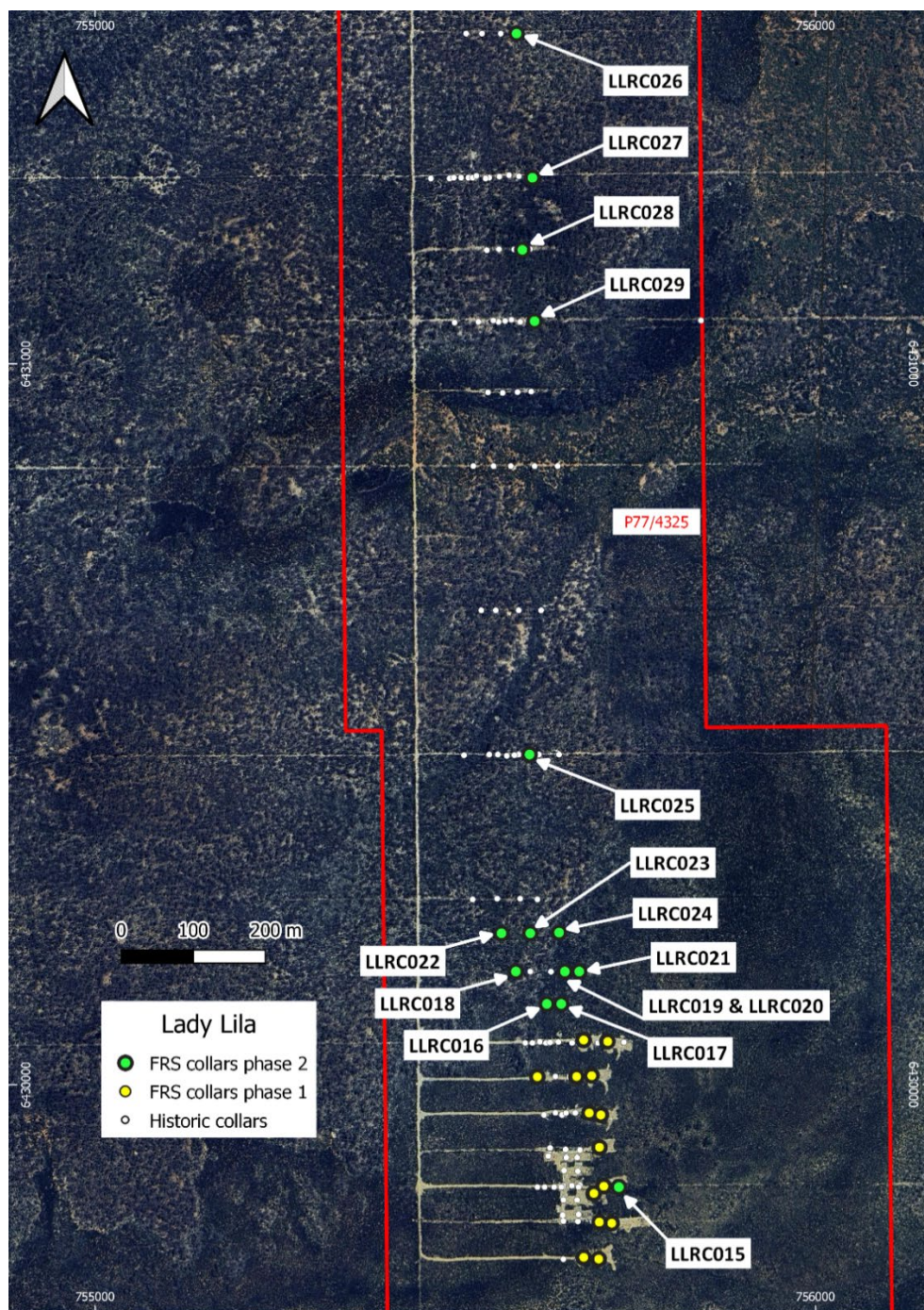


Figure 2. Phase 2 collar locations from the recent FRS RC drilling campaign at the Lady Lila prospect.

The second drilling programme successfully tested and confirmed the historic Au results and demonstrated consistent, **open mineralisation at depth and along strike**. In addition, the 1 m assay results provide further confidence in the Company's future exploration plans. This phase of drilling was designed to test the open mineralisation at depth and along strike to the north.

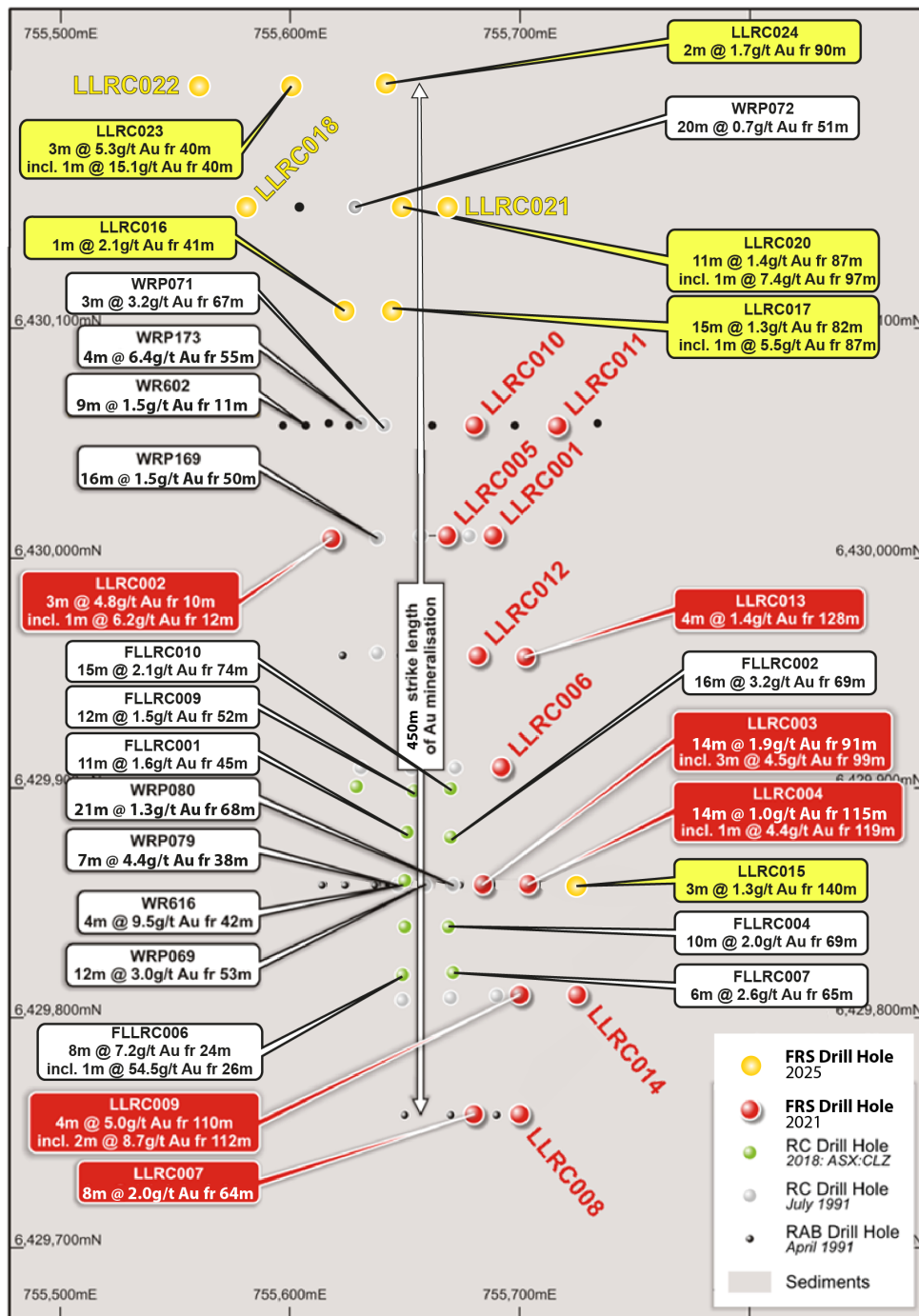


Figure 3. Historic and recent downhole max results at the Lady Lila prospect with significant results indicated. Drilling results are down hole width and not true width.

LLRC015 confirmed high-grade mineralisation at depth, while the three drill lines up to LLRC023 also extended the strike length of gold mineralisation from 300 m to 450 m (Figure 3).

Further along strike, only holes LLRC027 and LLRC028 intersected low-grade mineralisation, consistent with historic drilling, with mineralisation remaining open at depth.

FRS noted a change in geology further to the north, with the disappearance of the magnetic high that coincides with a north–south trending geochemical Au anomaly.

Table 2. All significant drilling intercepts from recent FRS drilling at Lady Lila. All intercepts >1m in width are included in this table. Intercepts are based on a cut-off grade of 0.3g/t Au, allowing for internal dilution by two “waste” or sub-grade (<0.3g/t Au) samples. Drilling intercept widths reported in this table are down-hole widths and not true widths.

Hole_ID	Depth_From	Depth_To	Interval Width	Grade (g/t)	Gram/metre
LLRC017	82	97	15	1.28	19.2
LLRC023	40	43	3	5.32	15.96
LLRC020	87	98	11	1.35	14.85
LLRC015	140	143	3	1.28	3.84
LLRC028	90	94	4	0.94	3.76
LLRC024	90	92	2	1.69	3.38
LLRC016	87	90	3	0.98	2.94
LLRC018	1	5	4	0.64	2.56
LLRC016	41	42	1	2.05	2.05
LLRC015	135	137	2	0.83	1.66
LLRC027	115	117	2	0.69	1.38
LLRC019	1	3	2	0.63	1.26
LLRC021	111	115	4	0.27	1.08
LLRC016	57	58	1	0.77	0.77
LLRC027	105	107	2	0.34	0.68

The Company’s focus has now shifted to expanding the mineralisation further to the south.

Next Steps

A third drilling campaign is planned over P77/4325 to further test the extent of the mineralisation both along strike (north–south) and at depth.

Furthermore, P77/4326 (the southernmost tenement) has only been lightly tested, with historic, widely spaced, shallow RAB drilling completed to an average depth of 54 m.

A soil sampling campaign infilling historic auger lines revealed gold anomalies in the northern part of P77/4326. The company intends to test these targets at depth, below the previous RAB drilling, using RC drilling. As a result, POW 203751 have been lodged over historic drill tracks.

For personal use only

For personal use only

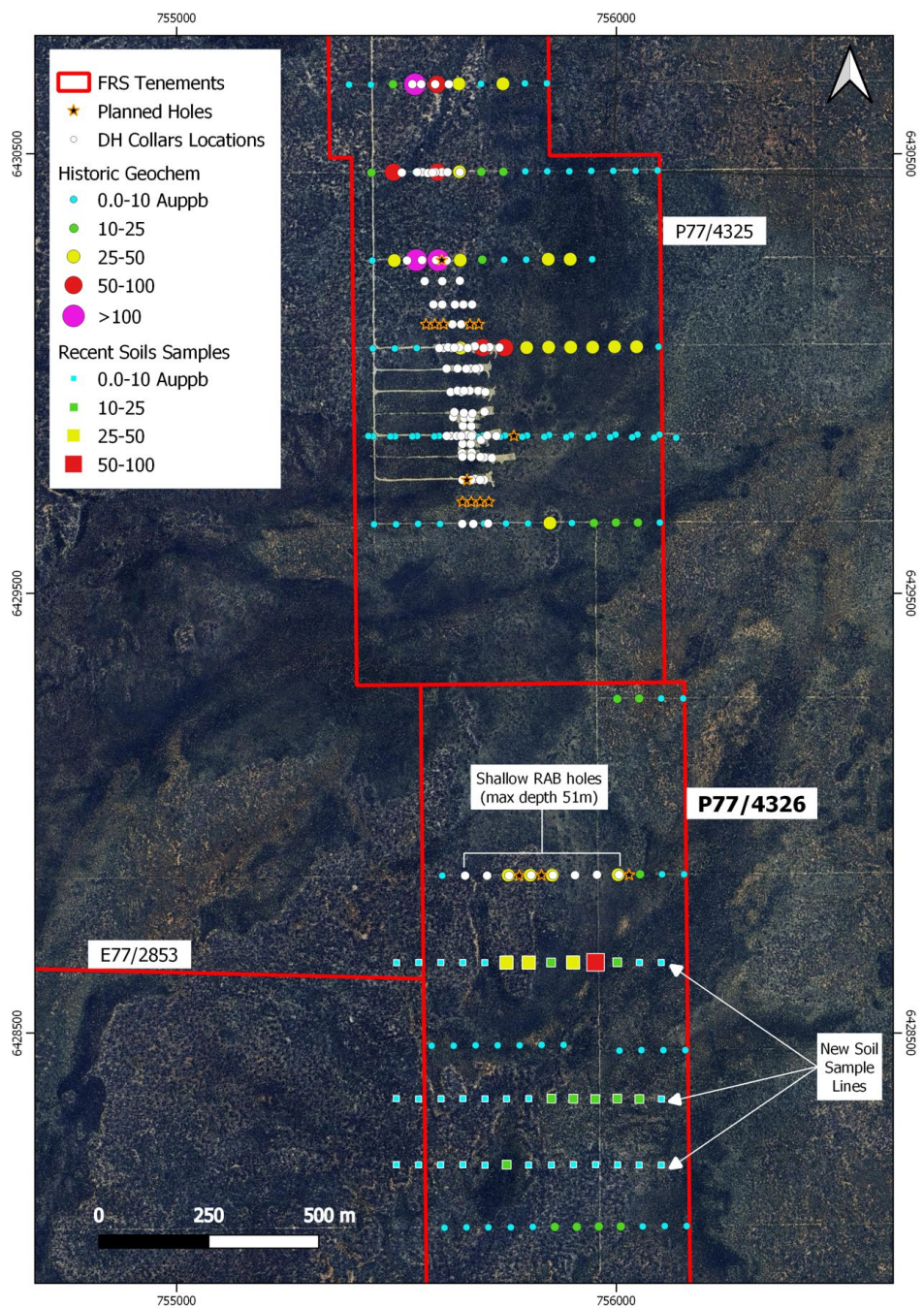


Figure 4. New Soil Sampling Results and Drill Hole Collar Locations for P77/4326

The Company has also engaged specialist consultants to undertake a flora and vegetation survey later in the month, across both P77/4325 and P77/4326.

Mining lease application M77/1325, applied for in March 2025, covers the area of both P77/4325 and P77/4326. The Company is pleased to report that it has entered into a heritage agreement with the Ballardong Aboriginal Corporation in anticipation of the grant of the lease.

Ballardong Aboriginal Corporation Chairperson Tracey de Grussa commented:

“On behalf of Ballardong Aboriginal Corporation, we welcome this opportunity to work together with Forrestania Resources regarding the Lady Lila deposit with the common goal of bringing benefits to the wider Ballardong Community.”

Mineral Resource Statement

The Lady Lila Mineral Resource was constructed in using Geovia Surpac software. A classical cross-sectional interpretation approach was used to create a 3D model of mineralisation, informed by the FRS project database. Grade interpolation is via ordinary kriging and resources are classified by relative drill spacing. Blocks informed by mainly 10m and 25m nominally spaced lines or with high degrees of geological continuity in regions of slightly sparser drilling were classified as Indicated (main domain). All other resources were classified as Inferred and will be the focus of upcoming resource development drilling. A nominal AUD8000 pit was used to test 'prospect of eventual economic extraction' – qualifying all mineral resources for reporting.

Cutoff

The resource has been reported using a 0.5g/t Au lower cutoff, approximating a natural cutoff for open pit mining.

Geology and Interpretation

The project lies in the Forrestania Greenstone Belt, which is the southern extension of the Southern Cross Greenstone Belt. The Forrestania Greenstone Belt is a broad, north plunging synclinal structure. The dominant rock type is a fine to medium grained mafic amphibolite. Accompanying this are metabasalt, tremolite-chlorite-talc schist, serpentinite, banded iron formation, banded chert, muscovite-quartz schist and metasediments.

Lady Lila is part of a linear, discontinuous, 1,400 metre long, north south trending zone. The mineralised zone dips steeply (60-70°) to the east and is hosted in narrow quartz stringers enveloped by garnetiferous, graphitic, pelitic sediments. The lithology strongly correlates with a magnetic high and a coincident north-south trending geochemical Au anomaly.

For personal use only

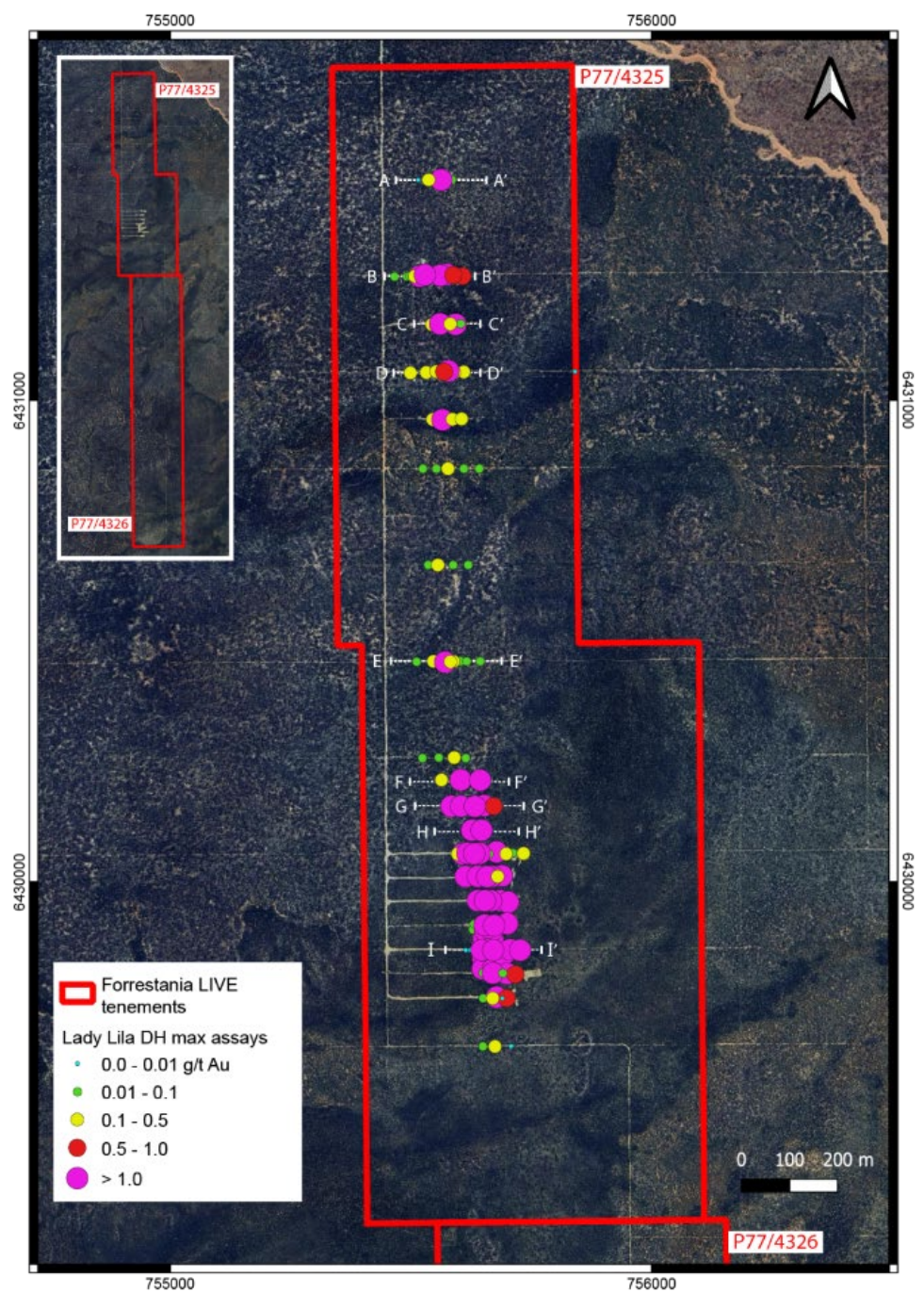


Figure 5. Forrestania Resource's Lady Lila prospect, showing DH Max Au values and locations of cross sections. Selected cross sections can be seen below as well as in the supplementary information at the end of the announcement.

For personal use only

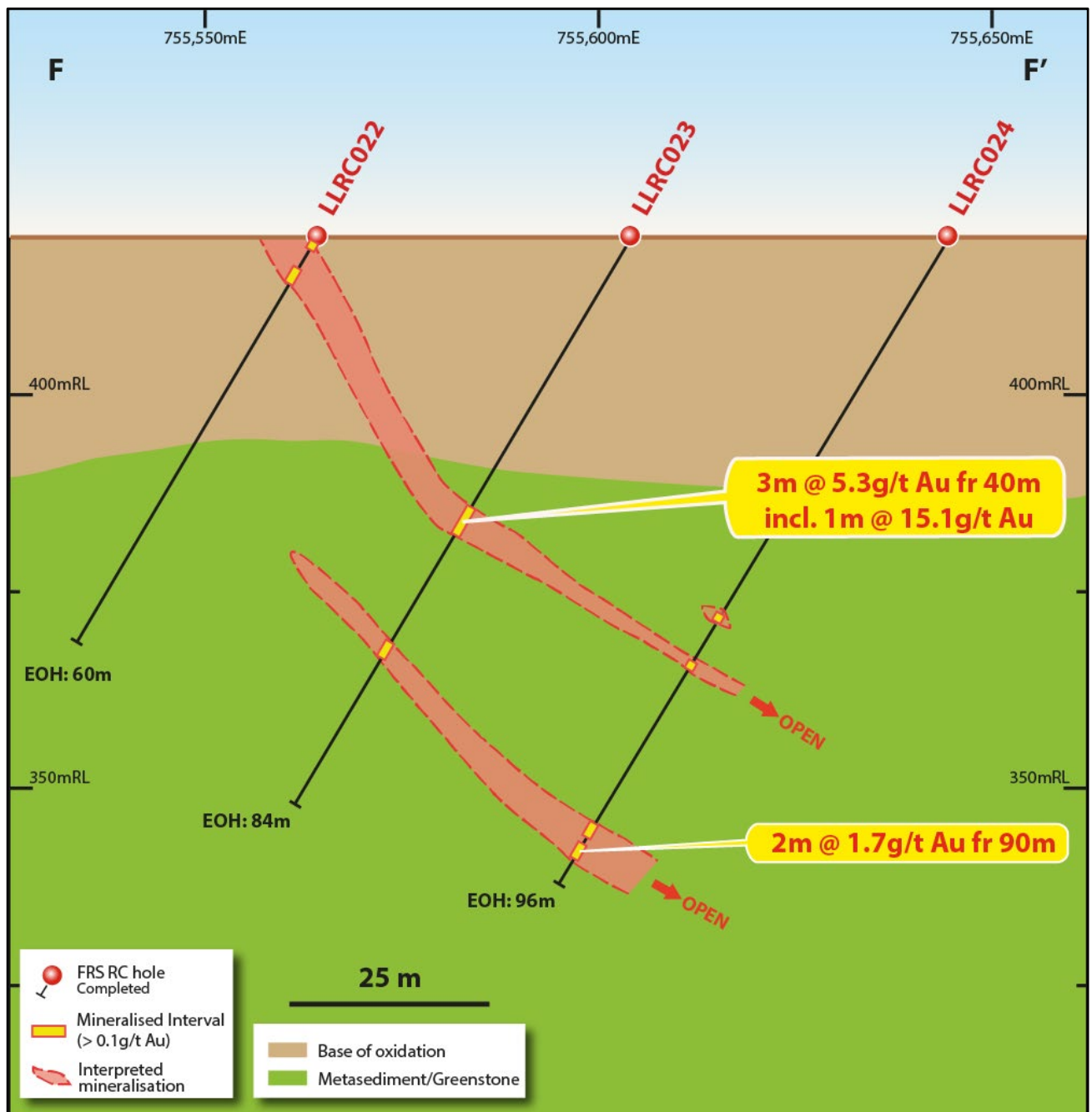


Figure 6. Cross section (F-F'), looking north ~10m along strike, showing Au mineralisation of historic drilling. Drilling intercept widths are down-hole widths and not true widths. Intercepts are based on a cut-off grade of 0.3g/t Au, allowing for internal dilution by two "waste" or sub-grade (<0.1g/t Au) samples.

For personal use only

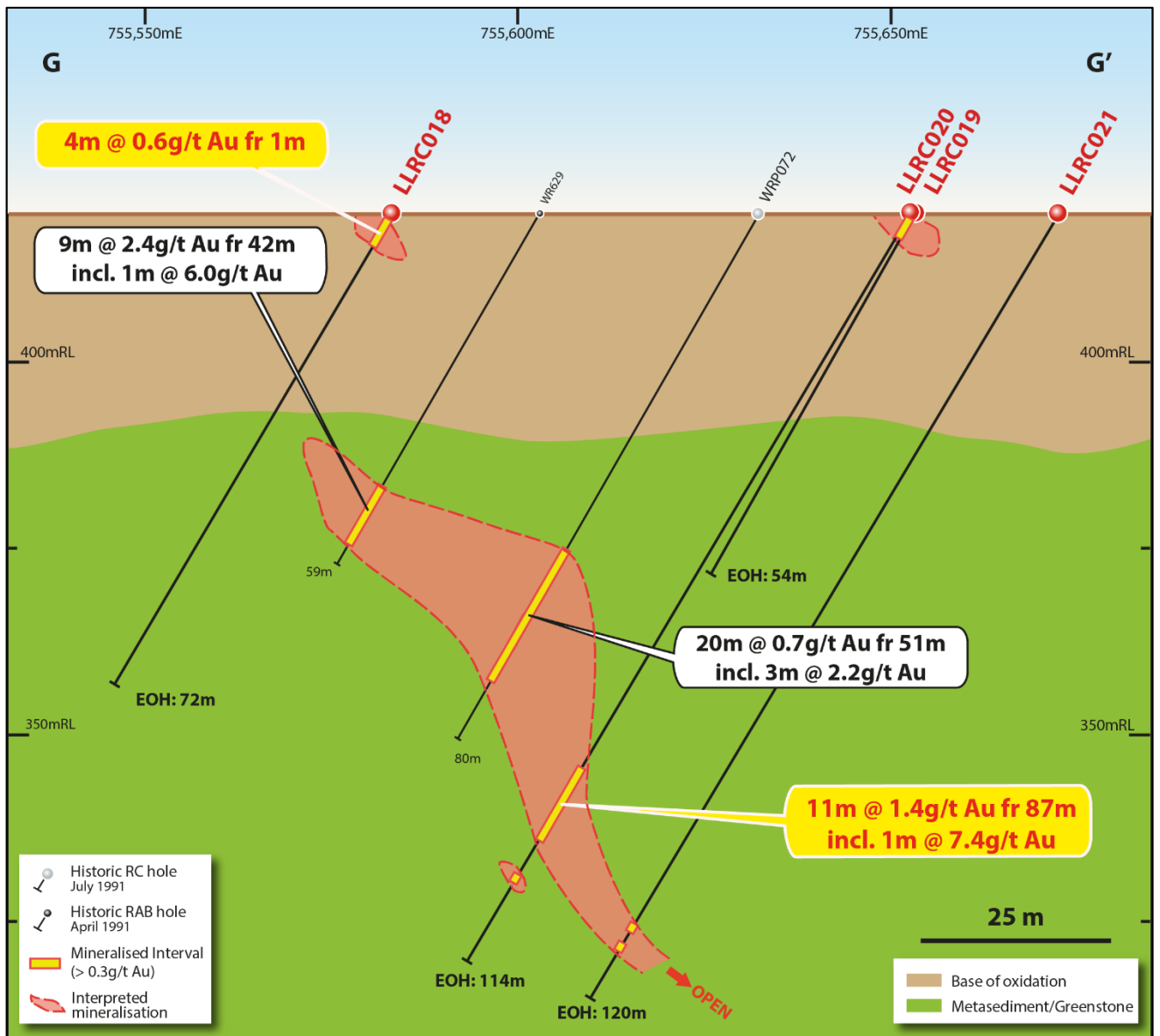


Figure 7. Cross section (G-G'), looking north ~10m along strike, showing Au mineralisation of historic drilling. Drilling intercept widths are down-hole widths and not true widths. Intercepts are based on a cut-off grade of 0.3g/t Au, allowing for internal dilution by two "waste" or sub-grade (<0.3g/t Au) samples.

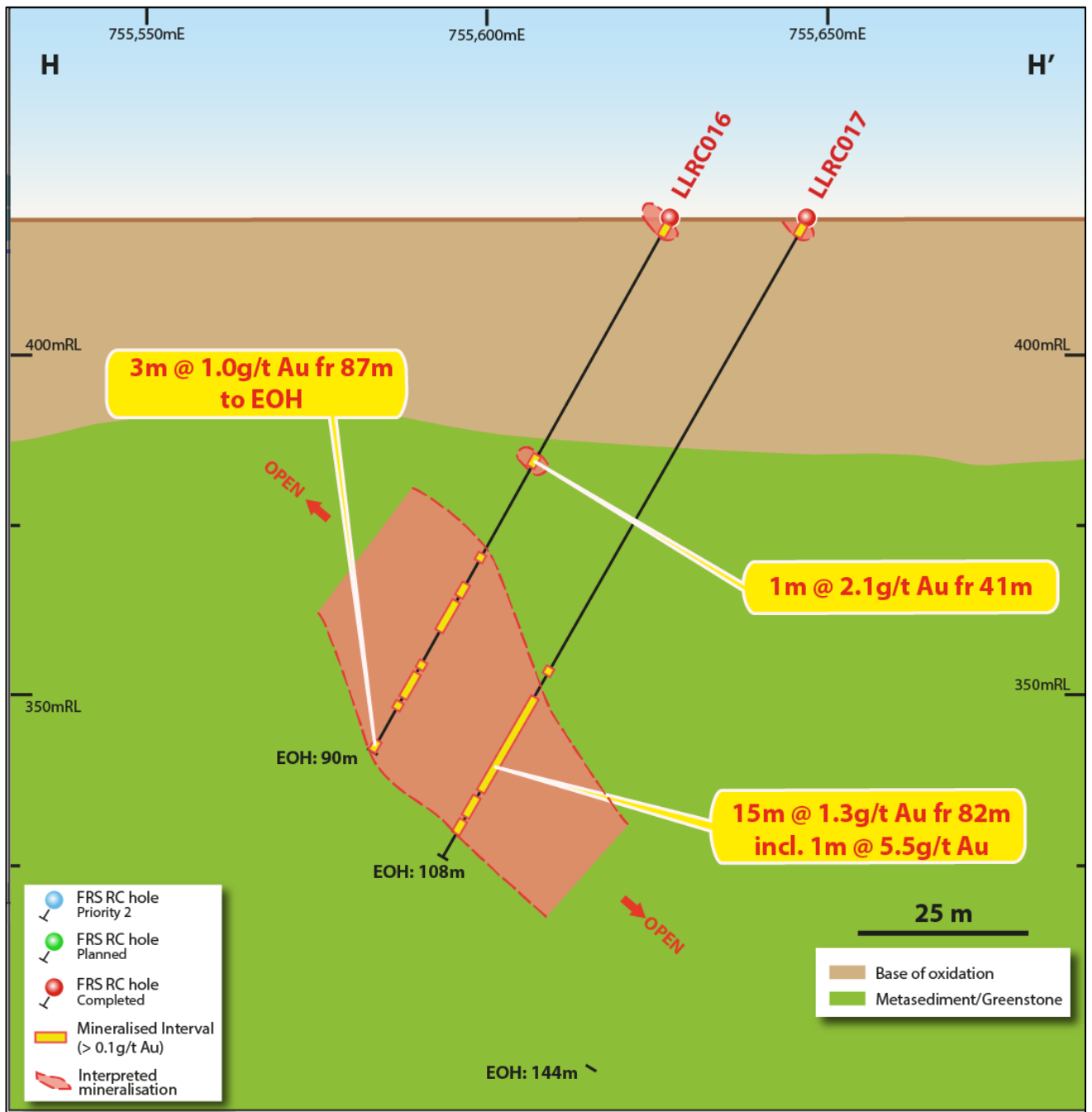


Figure 8. Cross section (G-G'), looking north ~10m along strike, showing Au mineralisation of historic drilling. Drilling intercept widths are down-hole widths and not true widths. Intercepts are based on a cut-off grade of 0.3g/t Au, allowing for internal dilution by two "waste" or sub-grade (<0.3g/t Au) samples.

For personal use only

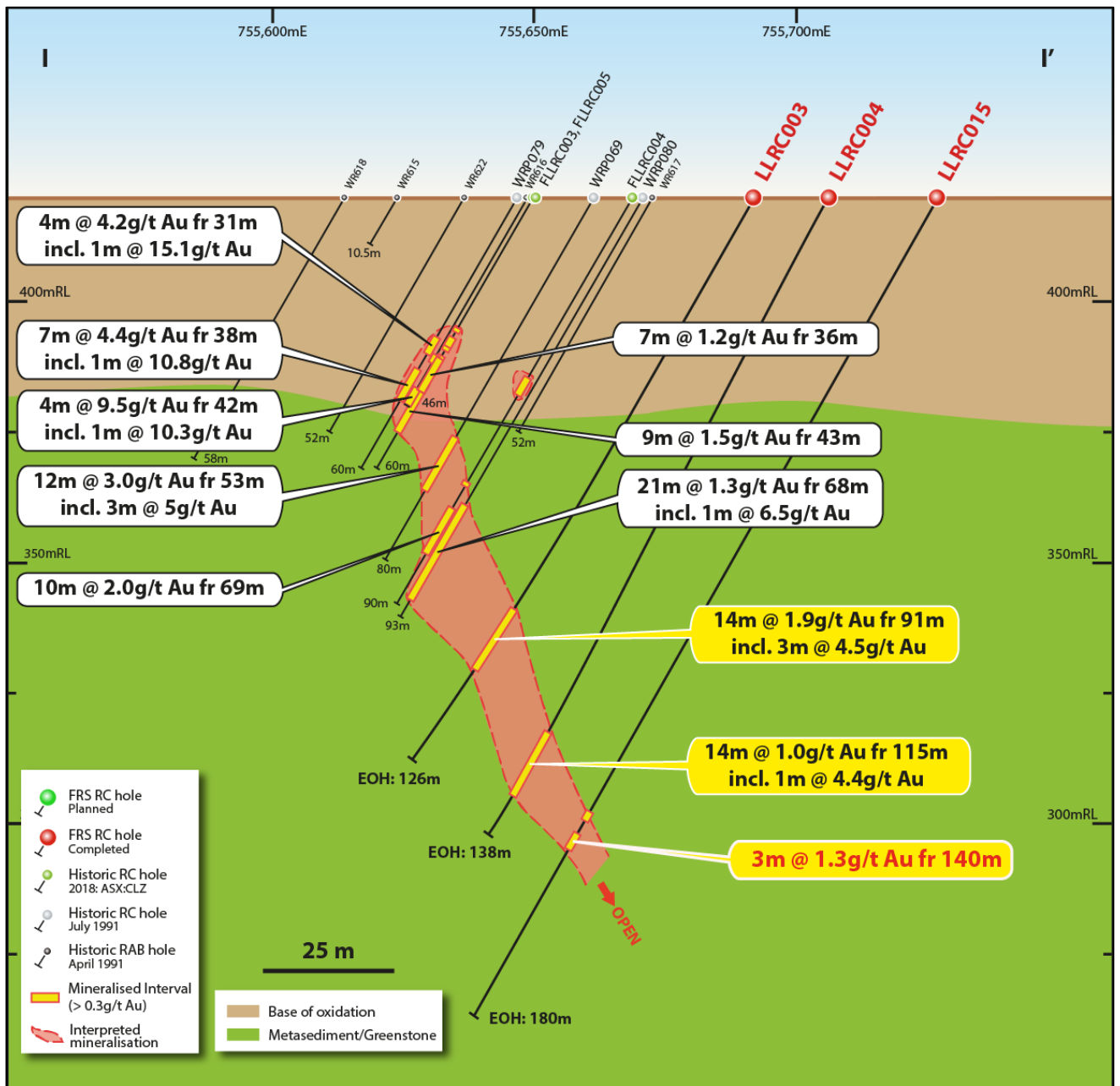


Figure 9. Cross section (I-I'), looking north ~15m along strike, showing Au mineralisation of historic drilling. Drilling intercept widths are down-hole widths and not true widths. Intercepts are based on a cut-off grade of 0.3g/t Au, allowing for internal dilution by two "waste" or sub-grade (<0.3g/t Au) samples. FRS holes (red caption) completed in 2025.

Drilling Techniques

The mineral resource was calculated using the FRS Company database. RC drilling was used for interpretation and resource calculation across all resource classification, while RAB was only used for interpretation in Indicated areas. Within regions of inferred resources, RAB was used for both interpretation and resource calculation.

Table 3. Summary of holes available for use in Mineral Resource interpretation:

Prospect	Holes	Type	Total m
Lady Lila	74	RC	6,901
	55	RAB	2,955
Total	129		9,856

Sampling and Sub Sampling Techniques

All FRS holes were completed by RC drilling. Topdrill were the drilling contractor and utilised a Schramm C685.

Industry standard practices were applied to the drilling programme and sampling. Representative 4m composite samples were taken from the spoil piles, with a hand size aluminium scoop. These samples were collected in a numbered calico bag, recorded by FRS staff and submitted to ALS Perth (sample sizes were approximately 1.5kg up to 2.5kg were collected).

1m single splits were also taken off the rig (in numbered calico bags) from the cone splitter and may be submitted to the lab at a later date, based on the results from the 4m composites. The details of these samples were recorded by FRS geologists.

Regular air and manual cleaning of the rig cyclone was undertaken to remove potential contaminants.



Figure 10. Photograph taken during the phase2 drilling campaign at Lady Lila in May 2025.

Sample Analysis

LLRC0015-LLRC0029: All samples (both 4m composites and 1m samples) were submitted for Au analysis using Au-AA25 methodology (fire assay) which uses a fire assay fusion FA-FUS03, with an AAS finish.

LLRC0001-LLRC0014: Samples were submitted for Au analysis using AuMe-TL43 (aqua regia); Aqua regia digestion of 25g sample, followed by trace Au and multi-element analyses by ICP-MS and ICP-AES. 1m samples were submitted for Au analysis using FA50AAS methodology (fire assay) which uses a fire assay fusion, with an AAS finish.

Estimation Methodology

Ordinary kriging was used to interpolate block grades, constrained by 3 wireframed domains. Grade capping was employed using 8.25, 2.65, 1.01 g/t Au for the three domains.

Lady Lila Estimation parameters are tabulated below:

Table 4. Lady Lila estimation parameters – Pass 1.

IDW ³	Lady Lila (Dom 1-3)
Orientation - Major	170
Orientation - Semi	-40
Orientation - Minor	60
Anisotropy	2 : 4
Major Search Dist	160
Min Samples	8
Max Samples	24

Estimation outputs by domain show good correlation:

Table 5. Grade estimation outputs vs cut composites by domain.

Domain	Rescat	Block Model (g/t Au)	Composites (g/t Au)
1	Ind/Inf	0.99	1.27
2	Inf	0.65	0.62
3	Inf	0.45	0.52

Resources comprise a mixture of indicated and Inferred based on density of sampling informing estimates. The Competent person is familiar enough with deposits of the type of Lady Lila to classify Indicated resources as Indicated despite a lack of hard metallurgical data being currently available. Mineralogy and morphology considerations are used in lieu of metallurgical data at this point in time.

Mineralisation Views

An isometric view of the resource category of the deposit, looking NNW is shown below:

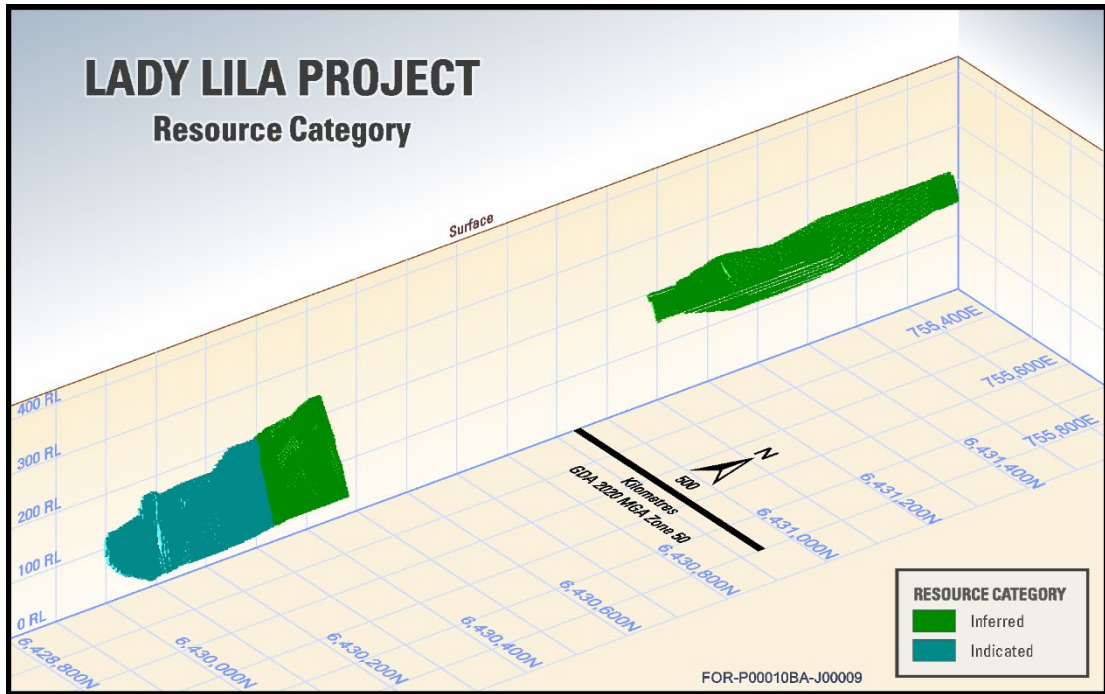


Figure 11. Isometric 3D view – Lady Lila Resource Category

An isometric view of the block model coloured by grade, looking NNW is shown below:

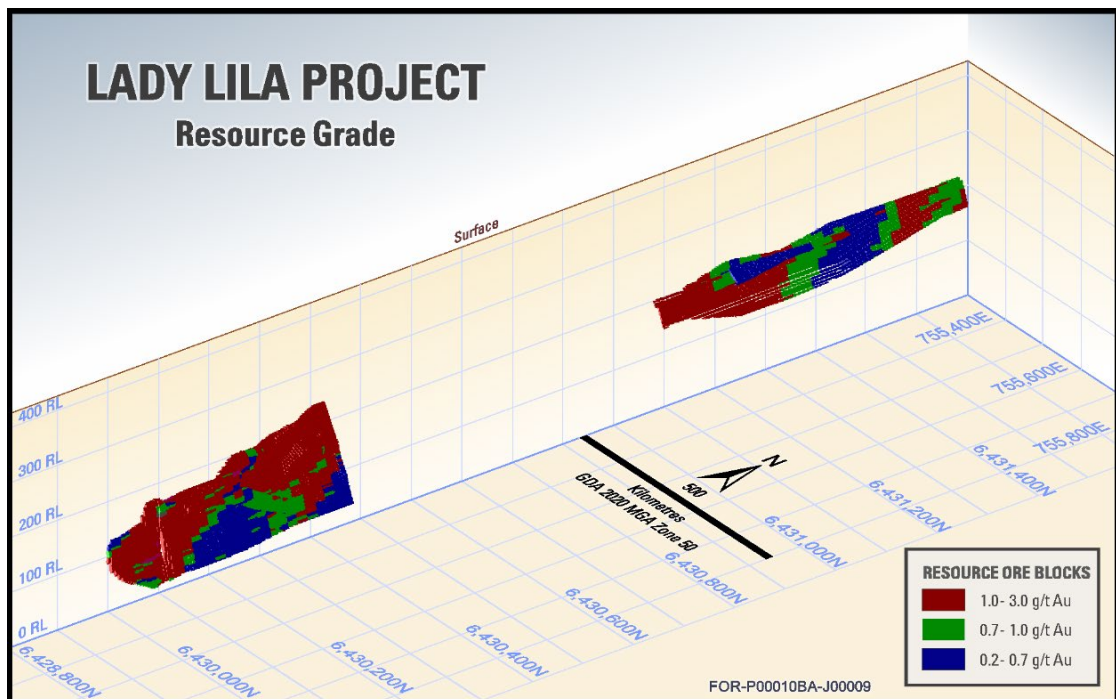


Figure 12. Isometric 3D view – all Lady Lila mineralisation

Metallurgy

At this point in time – no metallurgical work has been undertaken on the mineralisation at Lady Lila. Testwork is planned for the upcoming drilling and will be used to inform a higher resource confidence once results are returned.

For personal use only

This announcement has been authorised for release by Forrestania Resources' Board.

For further information please contact:

David Geraghty
Chairman
Phone +61 8 6555 2950
info@forrestaniresources.com.au

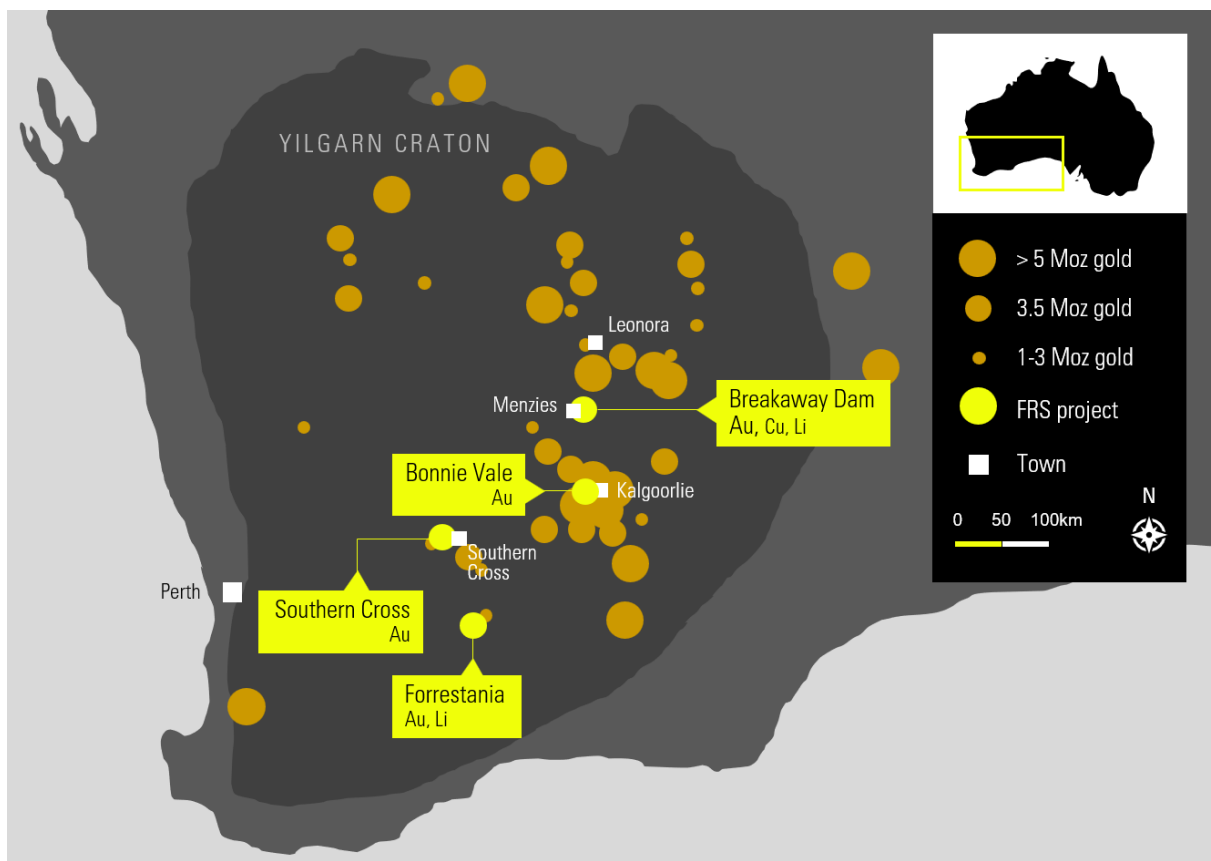
About Forrestania Resources Limited

Forrestania Resources Limited is an Australian resources company exploring for gold, copper and lithium in the Forrestania, Southern Cross and Eastern Goldfields regions of Western Australia.

The company's Forrestania Project hosts gold and lithium prospects in close proximity to the historic Bounty gold mine, the Covalent Mt Holland Lithium Mine, and the operating Flying Fox, and Spotted Quoll nickel mines in the well-endowed southern Forrestania Greenstone Belt.

The Eastern Goldfields tenements are located within the Norseman-Wiluna Greenstone Belt of the Yilgarn Craton, close to Coolgardie, Menzies and Leonora. In total, this includes twelve Exploration Licences and four Exploration Licence Applications, covering a total area of ~1,000km². The tenements are predominately non-contiguous and scattered over 300km length, overlying or on the margins of greenstone belts.

The Southern Cross Project is located in the Southern Cross Greenstone Belt and has significant potential for gold mineralisation.



Competent person's statement

The report and information that relates to the mineral resource estimate is based on information compiled by Mr Ben Pollard, BSc. (Mineral Exploration & Mining Geology), Grad Cert (Geostatistics), a Competent Person, MAusIMM. Mr. Pollard is the Principal of Cadre Geology and Mining Pty Ltd, a consultant to FRS and has sufficient experience, which is relevant to the style of mineralisation, geology and type of deposit under consideration and to the activity being undertaken to qualify as a Competent Person under the 2012 edition of the Australasian Code for Reporting Exploration Results, Mineral Resources and Ore Reserves (the 2012 JORC Code). Mr. Pollard consents to the inclusion in this report of the matters based on this information, in the form and context in which it appears.

Disclosure

The information in this announcement is based on the following publicly available ASX announcements and Forrestania Resources IPO, which is available from <https://www2.asx.com.au/>. The Company confirms that it is not aware of any new information or data that materially affects the information included in the original ASX announcements and that all material assumptions and technical parameters underpinning the relevant ASX announcements continue to apply and have not materially changed. The Company confirms that the form and context in which the Competent Person's findings are represented have not been materially modified from the original ASX announcements.

Cautionary statement regarding values & forward-looking information

The figures, valuations, forecasts, estimates, opinions and projections contained herein involve elements of subjective judgment and analysis and assumption. Forrestania Resources does not accept any liability in relation to any such matters, or to inform the Recipient of any matter arising or coming to the company's notice after the date of this document which may affect any matter referred to herein. Any opinions expressed in this material are subject to change without notice, including as a result of using different assumptions and criteria. This document may contain forward-looking statements. Forward-looking statements are often, but not always, identified by the use of words such as "seek", "anticipate", "believe", "plan", "expect", and "intend" and statements that an event or result "may", "will", "should", "could", or "might" occur or be achieved and other similar expressions. Forward-looking information is subject to business, legal and economic risks and uncertainties and other factors that could cause actual results to differ materially from those contained in forward-looking statements. Such factors include, among other things, risks relating to property interests, the global economic climate, commodity prices, sovereign and legal risks, and environmental risks. Forward-looking statements are based upon estimates and opinions at the date the statements are made. Forrestania Resources undertakes no obligation to update these forward-looking statements for events or circumstances that occur subsequent to such dates or to update or keep current any of the information contained herein. The Recipient should not place undue reliance upon forward-looking statements. Any estimates or projections as to events that may occur in the future (including projections of revenue, expense, net income and performance) are based upon the best judgment of Forrestania Resources from information available as of the date of this document. There is no guarantee that any of these estimates or projections will be achieved. Actual results will vary from the projections and such variations may be material. Nothing contained herein is, or shall be relied upon as, a promise or representation as to the past or future. Forrestania Resources, its affiliates, directors, employees and/or agents expressly disclaim any and all liability relating or resulting from the use of all or any part of this document or any of the information contained herein. Visual estimates of mineral abundance should never be considered a proxy or substitute for laboratory analyses where concentrations or grades are the factor of principal economic interest. Visual estimates also potentially provide no information regarding impurities or deleterious physical properties relevant to valuations. If any geochemical sampling data is reported in this announcement, it is not intended to support a mineral resources estimation. Any drilling widths given in this announcement are down-hole widths and do not represent true widths.

TABLE 1. JORC Code, 2012 Edition
Section 1: Sampling Techniques and Data

Criteria	JORC 2012 Explanation	Comment
Sampling techniques	<ul style="list-style-type: none"> <i>Nature and quality of sampling (eg cut channels, random chips, or specific specialised industry standard measurement tools appropriate to the minerals under investigation, such as down hole gamma sondes, or handheld XRF instruments, etc). These examples should not be taken as limiting the broad meaning of sampling.</i> <i>Include reference to measures taken to ensure sample representivity and the appropriate calibration of any measurement tools or systems used.</i> <i>Aspects of the determination of mineralisation that are Material to the Public Report. In cases where 'industry standard' work has been done this would be relatively simple (e.g., 'reverse circulation drilling was used to obtain 1 m samples from which 3 kg was pulverised to produce a 30 g charge for fire assay'). In other cases, more explanation may be required, such as where there is coarse gold that has inherent sampling problems. Unusual commodities or mineralisation types (e.g., submarine nodules) may warrant disclosure of detailed information.</i> 	<ul style="list-style-type: none"> The mineral resource was calculated using all data pertinent to Lady Lila as provided in the FRS database – some 129 holes, representing 9,856m of drilling. Samples are pulverised in the laboratory (total prep) to produce a sub sample for assaying via 50g Fire Assay. All sampling was conducted using QAQC sampling protocols which are in accordance with industry best practice. – including, blanks, standards and duplicates for qualitative analysis. All samples were prepared and assayed by an independent commercial laboratory whose instrumentation are regularly calibrated. <ul style="list-style-type: none"> All FRS (LLRC0001- LLRC0029) were completed by RC drilling. Holes LLRC001-LLRC014: This was a RC drilling programme, completed in 2021. Conventional Reverse Circulation (RC) percussion drilling was used to obtain a representative 1 metre samples of approximately 1.5kg, using a rig-mounted cyclone and cone splitter. For holes LLRC0015-LLRC029, completed in 2025 Topdrill, were the drilling contractor and utilized a Schramm C685. Industry standard practices were applied to the drilling programme and sampling. Representative 4m composite samples were taken from the spoil piles, with a hand size aluminium scoop. These samples were collected in a numbered calico bag, recorded by FRS staff and submitted to ALS Kalgoorlie (sample sizes were approximately 1.5kg up to 2.5kg were collected). 1m single splits were also taken off the rig (in numbered calico bags) from the cone splitter and may be submitted to the lab at a later date, based on the results from the 4m composites. The details of these samples were recorded by FRS geologists. Regular air and manual cleaning of the rig cyclone was undertaken to remove potential contaminants. The 4m composite samples were submitted to ALS Kalgoorlie; these samples were then trucked to ALS Perth, Canning Vale. LLRC0015-LLRC0029: All samples (both 4m composites and 1m samples) were submitted for Au analysis using Au-AA25 methodology (fire assay) which uses a fire assay fusion FA-FUS03, with an AAS finish. LLRC0001-LLRC0014: Samples were submitted for Au analysis using AuMe-TL43 (aqua regia); Aqua regia digestion of 25g sample, followed by trace Au and multi-element analyses by ICP-MS and ICP-AES. 1m samples were submitted for Au analysis using FA50AAS methodology (fire assay) which uses a fire assay fusion, with an AAS finish. Historical drilling at Lady Lila: <ul style="list-style-type: none"> Holes WRP008-010, WRP024, WR217-221, WR264-269, WR330-333, WR434-450: These holes were a mixture of RC and RAB drilling, completed in 1989 by AZTEC Mining Co. (WAMEX A31440). 5m composites were initially taken and any of the composites that returned values >0.10ppm Au had their 1m splits sampled. Samples were submitted to Analabs (now ALS) for the following analysis: Au: M329/PM202 AR_AAS (DL 0.02ppm) Cu : M101, As: M114. Holes WRPO69-072, WRPO79-080, WR540, WR596-WR702: These holes were a mixture of RC and RAB drilling, completed in 1990/1991 by AZTEC. (WAMEX A39333)

		<ul style="list-style-type: none"> No specific details are given in the WAMEX report but conventional, industry standard is presumed. As with the previous drilling, samples were submitted to Analabs (now ALS) for the following analysis: M329/PM202 AR_AAS (DL 0.02ppm/0.05ppm). Holes: WRP161-WRP185 were all RC drill holes and were completed by Forresteria Gold NL in 1997 using a schramm drilling rig. (WAMEX A56334). 1m samples were taken during this programme with no mention of composites. Samples were submitted to Amdel Labs Ltd for fire assay. Holes: FVHR020-FVHR036 were RAB holes completed by Forresteria Gold NL in 1999 using a custom built drilling rig. (WAMEX A59401). 4m composite samples were taken during this programme with any mineralised intervals having their 1m samples submitted for assay. These samples were submitted to Genalysis for aqua regia, presumably for the 4m composites but full information is not given. Holes: FLLRC001-FLLRC010 were completed in 2018 by Classic Resources Limited (ASX: CLZ). These holes were all RC drill holes and were completed using a hydco 350 drilling rig. Samples were submitted for sampling using methodology FA50_AAS. No details of the lab are given and all samples were sampled at 1 metre intervals, however, no details of compositing are given.
Drilling Techniques	<ul style="list-style-type: none"> <i>Drill type (e.g. core, reverse circulation, open-hole hammer, rotary air blast, auger, Bangka, sonic, etc) and details (e.g. core diameter, triple or standard tube, depth of diamond tails, face-sampling bit or other type, whether core is oriented and if so, by what method, etc).</i> 	<ul style="list-style-type: none"> RC drilling was via 5 3/8th inch face sampling hammer. All holes were surveyed using a reflex Gyro north seeking gyroscopic instrument (or equivalent) to obtain accurate down-hole directional data where ground conditions allowed. For the FRS drilling programme in 2021, a RC percussion drilling was completed using a 4.5 to 5 inch face sampling hammer bit. Historic drilling: The deposit has been drilled using a combination of RAB and RC drilling. All RC drill samples for assaying were generated via an RC hammer, but for early holes it is not known whether this was a face-sampling or conventional hammer. Samples are presumed to have passed through a cyclone on the drill rig and a riffle splitter to provide a sample for analysis. CLZ drilling: All drilling was completed using reverse circulation method, using a Hydco 350 model rig and 6m Remet Harlsen 4 1/2 inch rods. The rig mounted Airtruck has 1150 cfm 500 psi auxiliary couples with a hurricane 7t Booster 2400 cfm /1000 psi booster. The bit size was 5 5/8.
Drill sample recovery	<ul style="list-style-type: none"> <i>Method of recording and assessing core and chip sample recoveries and results assessed.</i> <i>Measures taken to maximise sample recovery and ensure representative nature of the samples.</i> <i>Whether a relationship exists between sample recovery and grade and whether sample bias</i> 	<ul style="list-style-type: none"> Each individual sample is visually checked for recovery, moisture, and contamination. Wet RC samples aren't utilised. Drilling recoveries are logged and recorded and captured within the project database. Loss is noted where it occurs. The style of expected mineralisation and the consistency of the mineralised intervals are expected to preclude any issue of sample bias due to material loss or gain. Historic drilling: Recovery rates from the historic drilling are not known. CLZ: Recoveries from the drilling are not known, as sample weights were not recorded at this stage of exploration, but visual inspection of samples in the field indicate that recoveries were sufficient.

Logging	<ul style="list-style-type: none"> Whether core and chip samples have been geologically and geotechnically logged to a level of detail to support appropriate Mineral Resource estimation, mining studies and metallurgical studies. Whether logging is qualitative or quantitative in nature. Core (or costean, channel, etc) The total length and percentage of the relevant intersections logged. 	<ul style="list-style-type: none"> RC chips were geologically logged using predefined lithological, mineralogical, and physical characteristic (colour, weathering etc.) logging codes. Logging was predominately qualitative in nature, although vein and sulphide percent was estimated visually. All new core has been photographed wet and dry. Sulphides in the lode positions occur predominately as disseminated grains and rarely as fine stringers varying from 1 to 3%. Pyrite dominates >95% with lesser arsenopyrite are rarely chalcopyrite. The sulphides typically occur on the margins of quartz veins or internal to the host rock. All holes are logged in full
Criteria	JORC 2012 Explanation	Comment
Sub-sampling techniques and sampling preparation	<ul style="list-style-type: none"> If core, whether cut or sawn and whether quarter, half or all core taken. If non-core, whether riffled, tube sampled, rotary split, etc and whether sampled wet or dry. For all sample types, the nature, quality, and appropriateness of the sample preparation technique. Quality control procedures adopted for all sub-sampling stages to maximise representivity of samples. Measures taken to ensure that the sampling is representative of the in-situ material collected, including for instance results for field duplicate/second-half sampling Whether sample sizes are appropriate to the grain size of the material being sampled. 	<ul style="list-style-type: none"> 1m samples are taken in RC drilling. RC samples are split using a cone splitter which is cleaned regularly to mitigate contamination. Drilling utilizes QAQC regime consisting of certified reference material checks, blanks, and duplicates. Sample sizes are considered to be appropriate to the geological model and the style of mineralisation.
Quality of assay data laboratory tests	<ul style="list-style-type: none"> The nature, quality and appropriateness of the assaying and laboratory procedures used and whether the technique is considered partial or total. For geophysical tools, spectrometers, handheld XRF instruments, etc, the parameters used in determining the analysis including instrument make and model, reading times, calibrations factors applied and their derivation, etc. Nature of quality control procedures adopted (eg standards, blanks, duplicates, external laboratory checks) and whether acceptable levels of accuracy (ie lack of bias) and precision have been established. 	<ul style="list-style-type: none"> QAQC protocols utilising Certified Reference Material (standards), blanks and duplicates were used. All checks passed quality test thresholds. All samples were prepared and assayed by an independent commercial laboratory whose instrumentation are regularly calibrated, utilising appropriate internal checks in QAQC. Geophysical tools and pXRF – N/A
Verification of sampling and assaying	<ul style="list-style-type: none"> The verification of significant intersections by either independent or alternative company personnel. The use of twinned holes. Documentation of primary data, data entry procedures, data verification, data storage (physical and electronic) protocols. Discuss any adjustment to assay data. 	<ul style="list-style-type: none"> Data collected in the field on paper or digital logs within tough-books computers, then transferred to the project database once collated and checked. Where holes have been drilled near legacy holes, as proxy twins, results mirror each other within acceptable limits. All data is validated by the supervising geologist and sent to the Perth office for further validation and integration into a Microsoft Access database.
Location of data points	<ul style="list-style-type: none"> Accuracy and quality of surveys used to locate drill holes (collar and down-hole surveys), trenches, mine workings and other locations used in Mineral Resource estimation. Specification of the grid system used. Quality and adequacy of topographic control. 	<ul style="list-style-type: none"> Drill holes were located using handheld GPS. Drill hole collar positions have been accurately surveyed utilising DGPS survey equipment to an accuracy of +/- 0.01m. Down holes surveys were completed using gyro. The grid system used for locating the collar positions of drillholes is GDA2020. RL's referenced are AHDR.L.

Data spacing and distribution	<ul style="list-style-type: none"> • <i>Data spacing for reporting of Exploration Results.</i> • <i>Whether the data spacing and distribution is sufficient to establish the degree of geological and grade continuity appropriate for the Mineral Resource and Ore Reserve estimation procedure(s) and classifications applied.</i> • <i>Whether sample compositing has been applied.</i> 	<ul style="list-style-type: none"> • Drilling has been completed on a grid drilled orthogonal to the N/S mineralisation, generally toward 090 and typically on nominal 12.5 and 25m spaced drill lines. The main deposit is drilled to notional grade control spacing and is therefore considered to be estimated to a high confidence level. • Data spacing and distribution is believed to be sufficient to establish the degree of geological and grade continuity appropriate for Indicated and Inferred Mineral Resources. A conservative approach has been taken on resource classification. • Raw samples have been composited to two metres for use in resource estimation, so as to affect the histogram in a manner that benefits the calculation of variance relationships in space.
Orientation of data in relation to geological structure	<ul style="list-style-type: none"> • <i>Whether the orientation of sampling achieves unbiased sampling of possible structures and the extent to which this is known, considering the deposit type.</i> • <i>If the relationship between the drilling orientation and the orientation of key mineralised structures is considered to have introduced a sampling bias, this should be assessed and reported if material.</i> 	<ul style="list-style-type: none"> • The drilling is predominantly conducted at -60 degrees orthogonal to strike and as such drill holes intersect the mineralisation close to perpendicular. The orientation of drilling is not likely to introduce a sampling bias.
Criteria	JORC 2012 Explanation	Comment
Sample Security	<ul style="list-style-type: none"> • <i>The measures taken to ensure sample security.</i> 	<ul style="list-style-type: none"> • Chain of custody protocols used for the FRS drill samples ensures sample security and integrity.
Audits and Reviews	<ul style="list-style-type: none"> • <i>The results of any audits or reviews of sampling techniques and data.</i> 	<ul style="list-style-type: none"> • No audits or reviews of the sampling techniques and data have been undertaken to date for the data.

Section 2: Reporting of Exploration Results

(Criteria listed in the preceding section also apply to this section.)

Criteria	JORC 2012 Explanation	Comment
Mineral tenement and land tenure status	<ul style="list-style-type: none"> Type, reference name/number, location and ownership including agreements or material issues with third parties such as joint ventures, partnerships, overriding royalties, native title interests, historical sites, wilderness or national park and environmental settings. The security of the tenure held at the time of reporting along with any known impediments to obtaining a licence to operate in the area. 	<ul style="list-style-type: none"> Gold and other mineral rights hosted by the Lady Lila tenure are owned 100% by FRS. No material issues exist with the underlying tenure and the tenements are therefore in good standing. The deposit site is on P77/4325.
Exploration done by other parties.	<ul style="list-style-type: none"> Acknowledgment and appraisal of exploration by other parties. 	<ul style="list-style-type: none"> The Lady Lila prospect was initially discovered by Sons of Gwalia in the late 1980's. During this period a number of non-JORC resource estimates were produced by a variety of operators including Aztec Mining, Forrestania Gold NL and Viceroy Australia. Between 1989 and 1991, 4208m were drilled using RAB and RC programmes by Aztec Mining. A total of 101 holes. Between 1997 and 1999, Forrestania Gold NL/Sons of Gwalia reported a total of 42 RAB and RC holes for 4864m at the Lady Lila prospect. A JORC compliant resource estimate was produced in 2016, when Fortuna SL Mining (then tenement holders) engaged Cadre Geology to complete one. This resource currently stands at 541,000 tonnes @ 1.38g/t Au for 24,000oz Au. Classic Minerals drilled 10 holes for 732m in 2018, these drill holes were (until 2021) the most recent drilling activity at Lady Lila.
Geology	<ul style="list-style-type: none"> Deposit type, geological setting and style of mineralisation. 	<ul style="list-style-type: none"> The Lady Lila prospect is prospective for gold mineralisation associated with structures in Archaean greenstone units. P77/4325 is part of the Archaean Southern Cross - Forrestania Greenstone Belt. The greenstone belt trends north to northwest and has a strike length of over 300 kilometres. Regional mapping has identified two distinct lithostratigraphic units within the Forrestania Greenstone Belt, a mafic — ultramafic metavolcanic suite and a sequence of immature clastic sediments, which overlie the older mafic - ultramafic sequence. These units are folded into a regional northerly plunging syncline, with the sedimentary rocks forming the core of the structure (Central Domain). The mafic — ultramafic rocks to the east (Eastern Domain) of the sediments are steeply west dipping while those to the west of the sediments (Western Domain) are shallowly east dipping. The basal rocks of the Eastern domain comprise a thick sequence of tholeiitic basalts with minor intrusive exhalative interflow sedimentary horizons, all upon a younger intrusive granitoid basement. The greenstones are predominantly altered mafic and ultramafic flows with intercalated fine banded iron formations, cherts, and at stratigraphically higher levels, fine grained clastic sediments.

		<ul style="list-style-type: none"> • The Forrestania Greenstone Belt (FGB) is enclosed by granitoids and folded along antictinal and synclinal axes that trend north — south and northwest — southeast. Numerous Proterozoic dolerite dykes cut the stratigraphy in an east —west and northeast — southwest direction. • Lady Lila is part of a linear, discontinuous, 1,400 metre long, north south trending zone. • The mineralised zone dips steeply (60-70°) to the east and is hosted in narrow quartz stringers enveloped by garnetiferous, graphitic, pelitic sediments. • The sediments bifurcate in places and accompany discontinuous chert beds that do not appear to be related to mineralisation. • The lithology strongly correlates with a magnetic high and a coincident north-south trending geochemical Au anomaly. • The gold mineralisation at Lady Lila is associated with a strongly weathered, steeply dipping sequence of weathered meta-pelites and BIFs. • Importantly, this mineralisation is analogous with the Bounty Gold Mine which is also hosted by a BIF.
Drill hole Information	<ul style="list-style-type: none"> • <i>A summary of all information material to the understanding of the exploration results including a tabulation of the following information for all Material drill holes:</i> • <i>easting and northing of the drill hole collar</i> • <i>elevation or RL (Reduced Level – elevation above sea level in metres) of the drill hole collar</i> • <i>dip and azimuth of the hole</i> • <i>down hole length and interception depth</i> • <i>hole length.</i> • <i>If the exclusion of this information is justified on the basis that the information is not Material and this exclusion does not detract from the understanding of the report, the Competent Person should clearly explain why this is the case.</i> 	<ul style="list-style-type: none"> • Refer to the tables in the report and notes attached thereto which provide all relevant details.
Data aggregation methods	<ul style="list-style-type: none"> • <i>In reporting Exploration Results, weighting averaging techniques, maximum and/or minimum grade truncations (e.g. cutting of high grades) and cut-off grades are usually Material and should be stated.</i> • <i>Where aggregate intercepts incorporate short lengths of high-grade results and longer lengths of low grade results, the procedure used for such aggregation should be stated and some typical examples of such aggregations should be shown in detail.</i> • <i>The assumptions used for any reporting of metal equivalent values should be clearly stated.</i> 	<ul style="list-style-type: none"> • Length weighted averaging of the drill hole intercepts are applied. Maximum grade truncations are not used in the calculations. • The reported assays have been length weighted (1m). • During modelling, lower cut offs are not applied, rather, intervals are selected based on continuous anomalism/mineralisation to result in a coherent domain volume. High grade intercepts internal to broader zones of mineralisation are reported as part of the interval. If an interval includes core loss, the lost interval is accounted for at the average grade of the interval. • No metal equivalents have been used.
Relationship between mineralisation widths and intercept lengths	<ul style="list-style-type: none"> • <i>These relationships are particularly important in the reporting of Exploration Results.</i> • <i>If the geometry of the mineralisation with respect to the drill hole angle is known, its nature should be reported.</i> • <i>If it is not known and only the down hole lengths are reported, there should be a clear statement to this effect (e.g. 'down hole length, true width not known').</i> 	<ul style="list-style-type: none"> • Drill hole intersections may not always be true widths – but generally thought to be at least 90% of true width. • The mineralisation at Lady Lila dips steeply to the east at an angle of between ~60 and ~85 degrees. Drilling is predominantly conducted at -60 degrees orthogonal to strike and as such drill holes intersect the mineralisation as close to perpendicular as possible.

Diagrams	<ul style="list-style-type: none"> • <i>Appropriate maps and sections (with scales) and tabulations of intercepts should be included for any significant discovery being reported These should include, but not be limited to a plan view of drill hole collar locations and appropriate sectional views.</i> 	<ul style="list-style-type: none"> • See body of text
Balanced reporting	<ul style="list-style-type: none"> • <i>Where comprehensive reporting of all Exploration Results is not practicable, representative reporting of both low and high grades and/or widths should be practiced to avoid misleading reporting of Exploration Results.</i> 	<ul style="list-style-type: none"> • All significant results are reported.
Other substantive exploration data	<ul style="list-style-type: none"> • <i>Other exploration data, if meaningful and material, should be reported including (but not limited to): geological observations; geophysical survey results; geochemical survey results; bulk samples – size and method of treatment; metallurgical test results; bulk density, groundwater, geotechnical and rock characteristics; potential deleterious or contaminating substances.</i> 	<ul style="list-style-type: none"> • All significant results are reported.
Further work	<ul style="list-style-type: none"> • <i>The nature and scale of planned further work (eg tests for lateral extensions or depth extensions or large-scale step-out drilling).</i> • <i>Diagrams clearly highlighting the areas of possible extensions, including the main geological interpretations and future drilling areas, provided this information is not commercially sensitive.</i> 	<ul style="list-style-type: none"> • Exploration and development within the Lady Lila Project is ongoing. • FRS is focusing on staged development drilling at Lady Lila in addition to mine planning, metallurgical studies and development studies as required with a view to monetising the project. • Drilling priorities over the next 12 months are to convert Inferred Resources into Indicated Resources and at the same time. • Future exploration programs may change depending on results and strategy.

Section 3: Estimation and Reporting of Mineral Resources

(Criteria listed in Section 1, and where relevant Section 2, also apply to this section.)

Criteria	JORC 2012 Explanation	Comment
Database integrity	<ul style="list-style-type: none"> • <i>Measures taken to ensure that data has not been corrupted by, for example, transcription or keying errors, between its initial collection and its use for Mineral Resource estimation purposes.</i> • <i>Data validation procedures used.</i> 	<ul style="list-style-type: none"> • Digital manipulation of drill results, creation of cross sections and integration with existing data ensures the integrity of data. • Successful calculation of composites in the mining package (Surpac) ensures data validation.

Site visits	<ul style="list-style-type: none"> • <i>Comment on any site visits undertaken by the Competent Person and the outcome of those visits.</i> • <i>If no site visits have been undertaken indicate why this is the case.</i> 	<ul style="list-style-type: none"> • The Competent Person has visited the site and was intimately involved with the data collection and geological logging.
Geological interpretation	<ul style="list-style-type: none"> • <i>Confidence in (or conversely, the uncertainty of) the geological interpretation of the mineral deposit.</i> • <i>Nature of the data used and of any assumptions made.</i> • <i>The effect, if any, of alternative interpretations on Mineral Resource estimation.</i> • <i>The use of geology in guiding and controlling Mineral Resource estimation.</i> • <i>The factors affecting continuity both of grade and geology.</i> 	<ul style="list-style-type: none"> • Confidence in the mineral resource is reflected in the resource classification assigned. Geological logging and assay data are the primary datasets used to model and estimate gold content in the deposit. • It is thought that credible alternative interpretations would vary immaterially from the current estimate given the current dataset. • Continuity of grade is controlled by the tenor of grade and geological continuity is established. A 'light tabling' approach to interpretation provides confidence in the continuity of grade and shape of mineralisation.
Dimensions	<ul style="list-style-type: none"> • <i>The extent and variability of the Mineral Resource expressed as length (along strike or otherwise), plan width, and depth below surface to the upper and lower limits of the Mineral Resource.</i> 	<ul style="list-style-type: none"> • Strike ~1700m, comprising two zones (north and south of 600m and 500m respectively) separated by an undrilled gap of some 600m. Width up to 10m downhole and down dip extent is to a depth of ~160m at its deepest.
Estimation and modelling techniques	<ul style="list-style-type: none"> • <i>The nature and appropriateness of the estimation technique(s) applied and key assumptions, including treatment of extreme grade values, domaining, interpolation parameters and maximum distance of extrapolation from data points. If a computer assisted estimation method was chosen include a description of computer software and parameters used.</i> • <i>The availability of check estimates, previous estimates and/or mine production records and whether the Mineral Resource estimate takes appropriate account of such data.</i> • <i>The assumptions made regarding recovery of by-products.</i> • <i>Estimation of deleterious elements or other non-grade variables of economic significance (eg sulphur for acid mine drainage characterisation).</i> • <i>In the case of block model interpolation, the block size in relation to the average sample spacing and the search employed.</i> • <i>Any assumptions behind modelling of selective mining units.</i> • <i>Any assumptions about correlation between variables.</i> • <i>Description of how the geological interpretation was used to control the resource estimates.</i> • <i>Discussion of basis for using or not using grade cutting or capping.</i> • <i>The process of validation, the checking process used, the comparison of model data to drill hole data, and use of</i> 	<ul style="list-style-type: none"> • Ordinary kriging was used to interpolate grade. Grade capping was used to reduce the effect of high grade outliers. 3 domains were modelled to isolate data for individual estimation. • Estimates were checked via an ordinary kriging estimate and also via mathematical averages assigned to domain tonnages. Each showed a high level of consensus. • No assumptions re recovery of bi-products and no estimation of deleterious compounds – only gold is pursued. • Parent block size for estimation was 20 x 10 x 4 (y,x,z). Sub blocking was allowed to ¼ these dimensions for volume resolution. • A nominal minimum mining width of 2m was assumed. • Mineralisation wireframes were built with the input of geological logging and it was these modelled domains that controlled the extent of each domains estimate. • Exploitation of the main part of the near surface component of the deposit has been assumed will be via open cut methods and the resource model is commensurate with this. • No historic reconciliation data is available.

	<i>reconciliation data if available.</i>	
Criteria	JORC 2012 Explanation	Comment
Estimation and modelling techniques (<i>cont'd</i>)		<ul style="list-style-type: none"> Estimate outputs were compared with raw data via swath plots and this analysis showed acceptable reconciliation:
Moisture	<ul style="list-style-type: none"> <i>Whether the tonnages are estimated on a dry basis or with natural moisture, and the method of determination of the moisture content.</i> 	<ul style="list-style-type: none"> All calculations are done on a dry basis via a dry SG assumption.
Cut-off parameters	<ul style="list-style-type: none"> <i>The basis of the adopted cut-off grade(s) or quality parameters applied.</i> 	<ul style="list-style-type: none"> The resource was reported using nominal cutoffs of 0.5. These were selected due to their approximate congruence with cutoff grades in open pit extraction.
Mining factors or assumptions	<ul style="list-style-type: none"> <i>Assumptions made regarding possible mining methods, minimum mining dimensions and internal (or, if applicable, external) mining dilution. It is always necessary as part of the process of determining reasonable prospects for eventual economic extraction to consider potential mining methods, but the assumptions made regarding mining methods and parameters when estimating Mineral Resources may not always be rigorous. Where this is the case, this should be reported with an explanation of the basis of the mining assumptions made.</i> 	<ul style="list-style-type: none"> Broad assumptions on open pit mining followed by eventual underground mining have been adopted. The CP deems all resources to have a high chance of eventual economic extraction.
Metallurgical factors or assumptions	<ul style="list-style-type: none"> <i>The basis for assumptions or predictions regarding metallurgical amenability. It is always necessary as part of the process of determining reasonable prospects for eventual economic extraction to consider potential metallurgical methods, but the assumptions regarding metallurgical treatment processes and parameters made when reporting Mineral Resources may not always be rigorous. Where this is the case, this should be reported with an explanation of the basis of the metallurgical assumptions made.</i> 	<ul style="list-style-type: none"> None undertaken thus far

Criteria	JORC 2012 Explanation	Comment
Environmental factors or assumptions	<ul style="list-style-type: none"> Assumptions made regarding possible waste and process residue disposal options. It is always necessary as part of the process of determining reasonable prospects for eventual economic extraction to consider the potential environmental impacts of the mining and processing operation. While at this stage the determination of potential environmental impacts, particularly for a greenfields project, may not always be well advanced, the status of early consideration of these potential environmental impacts should be reported. Where these aspects have not been considered this should be reported with an explanation of the environmental assumptions made. 	<ul style="list-style-type: none"> Minimal assumptions have been made in this regard, however, there are no known impediments to conventional waste disposal for this type of project that have been identified as roadblocks Lady Lila
Bulk density	<ul style="list-style-type: none"> Whether assumed or determined. If assumed, the basis for the assumptions. If determined, the method used, whether wet or dry, the frequency of the measurements, the nature, size and representativeness of the samples. The bulk density for bulk material must have been measured by methods that adequately account for void spaces (vugs, porosity, etc), moisture and differences between rock and alteration zones within the deposit. Discuss assumptions for bulk density estimates used in the evaluation process of the different materials. 	<ul style="list-style-type: none"> Bulk density assignment is via assumption based on similar deposits in the WA goldfields. Values used are; Oxidised 2.0tm⁻³ Transitional 2.3tm⁻³ Fresh 2.7tm⁻³ Any variation in actual bulk densities for these oxidation states are considered immaterial and within the natural variation of the system.
Classification	<ul style="list-style-type: none"> The basis for the classification of the Mineral Resources into varying confidence categories. Whether appropriate account has been taken of all relevant factors (ie relative confidence in tonnage/grade estimations, reliability of input data, confidence in continuity of geology and metal values, quality, quantity and distribution of the data). Whether the result appropriately reflects the Competent Person's view of the deposit. 	<ul style="list-style-type: none"> Anecdotal evidence of metallurgical performance of ores local to Lady Lila provide confidence for Indicated portions of the deposit and upcoming work will provide quantitative information which will be used in subsequent mine planning work. Proper account has been taken of all other relevant factors with respect to resource classification to yield a fair and defensible classification regime. The resultant classification regime reflects the CP's view of the deposit.
Audits or reviews	<ul style="list-style-type: none"> The results of any audits or reviews of Mineral Resource estimates. 	<ul style="list-style-type: none"> Internal peer review has been undertaken within Cadre Geology and Mining Pty Ltd.
Discussion of relative accuracy/ confidence	<ul style="list-style-type: none"> Where appropriate a statement of the relative accuracy and confidence level in the Mineral Resource estimate using an approach or procedure deemed appropriate by the Competent Person. For example, the application of statistical or geostatistical procedures to quantify the relative accuracy of the resource within stated confidence limits, or, if such an approach is not deemed appropriate, a qualitative discussion of the factors that could affect the relative accuracy and confidence of the estimate. 	<ul style="list-style-type: none"> Top cuts used in this estimation control the effect of high grade outliers, especially given the Indicated resources. The Competent Person is satisfied with the estimate outcomes given the current dataset. Variographic analysis has informed the parameters of for estimation via OK. Variographic results back up grade trends seen empirically in the data. Classification of resource categories has been done in a defensible logical manner.

- | | | |
|--|--|--|
| | <ul style="list-style-type: none">• <i>The statement should specify whether it relates to global or local estimates, and, if local, state the relevant tonnages, which should be relevant to technical and economic evaluation. Documentation should include assumptions made and the procedures used.</i>• <i>These statements of relative accuracy and confidence of the estimate should be compared with production data, where available.</i> | |
|--|--|--|

Supplementary data

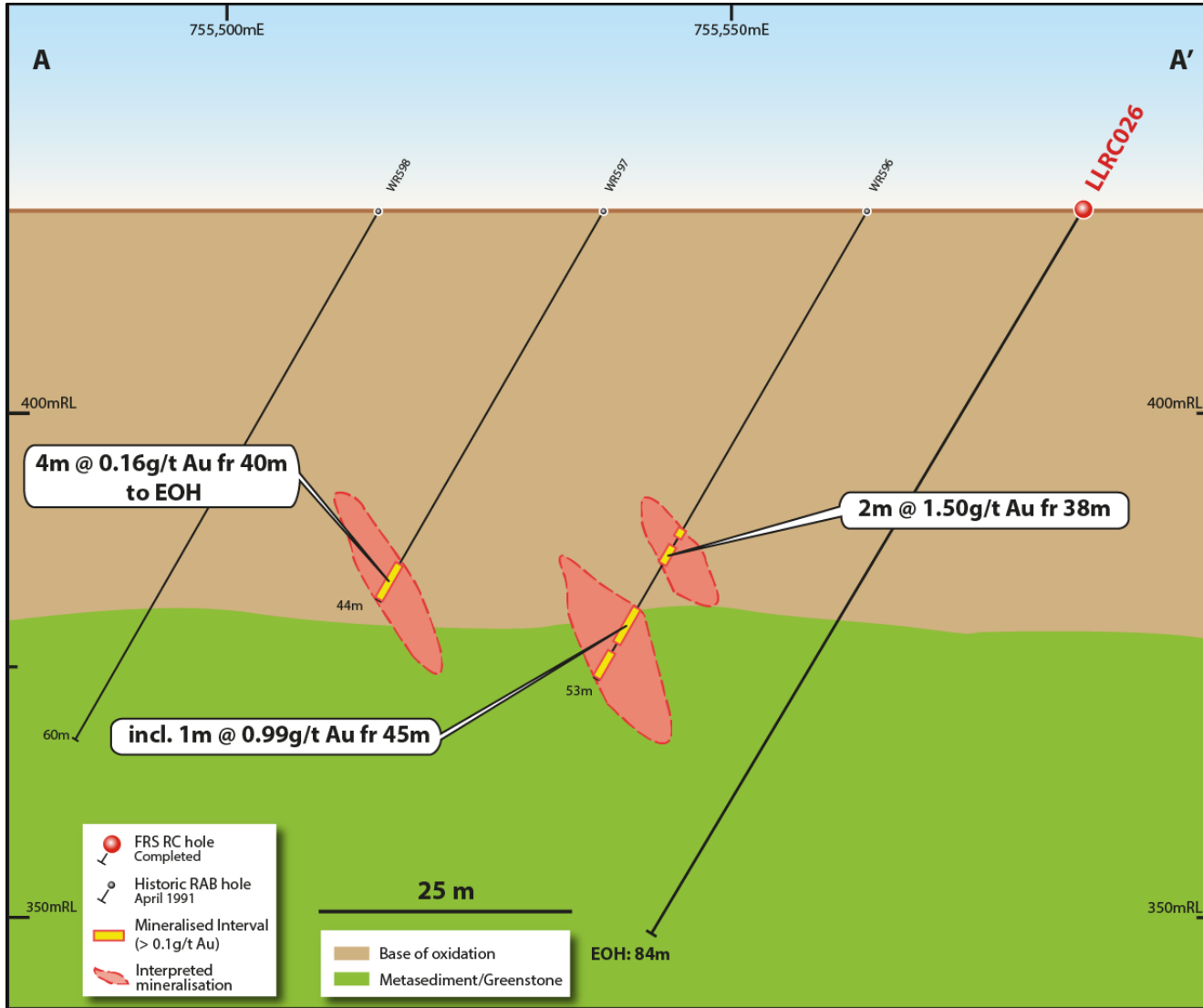


Figure 13. Cross section (A-A'), looking north ~10m along strike, showing Au mineralisation of historic drilling. Drilling intercept widths are down-hole widths and not true widths. Intercepts are based on a cut-off grade of 0.3g/t Au, allowing for internal dilution by two "waste" or sub-grade (<0.3g/t Au) samples.

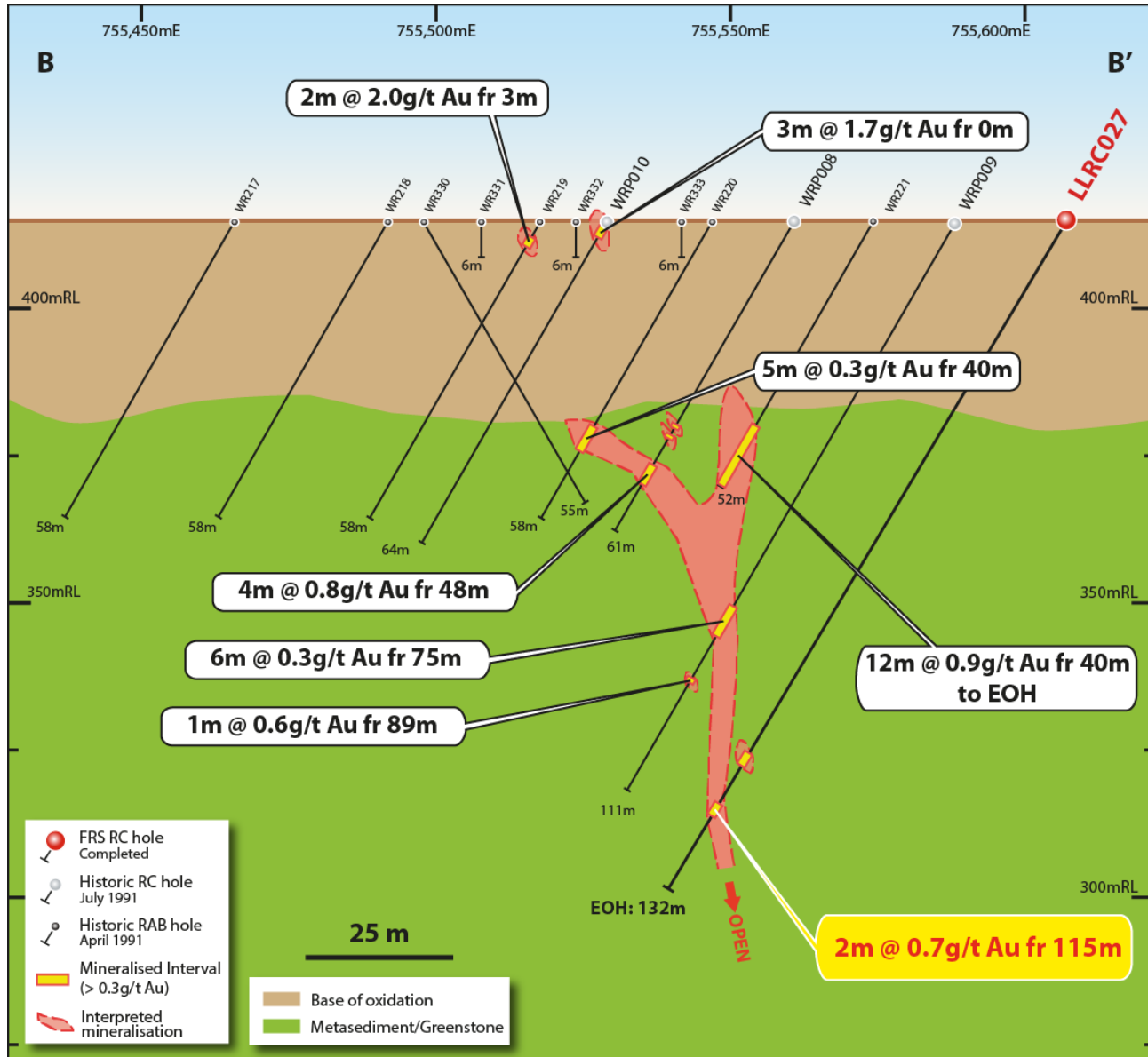


Figure 14. Cross section (B-B'), looking north ~10m along strike, showing Au mineralisation of historic drilling. Drilling intercept widths are down-hole widths and not true widths. Intercepts are based on a cut-off grade of 0.3g/t Au, allowing for internal dilution by two “waste” or sub-grade (<0.3g/t Au) samples.

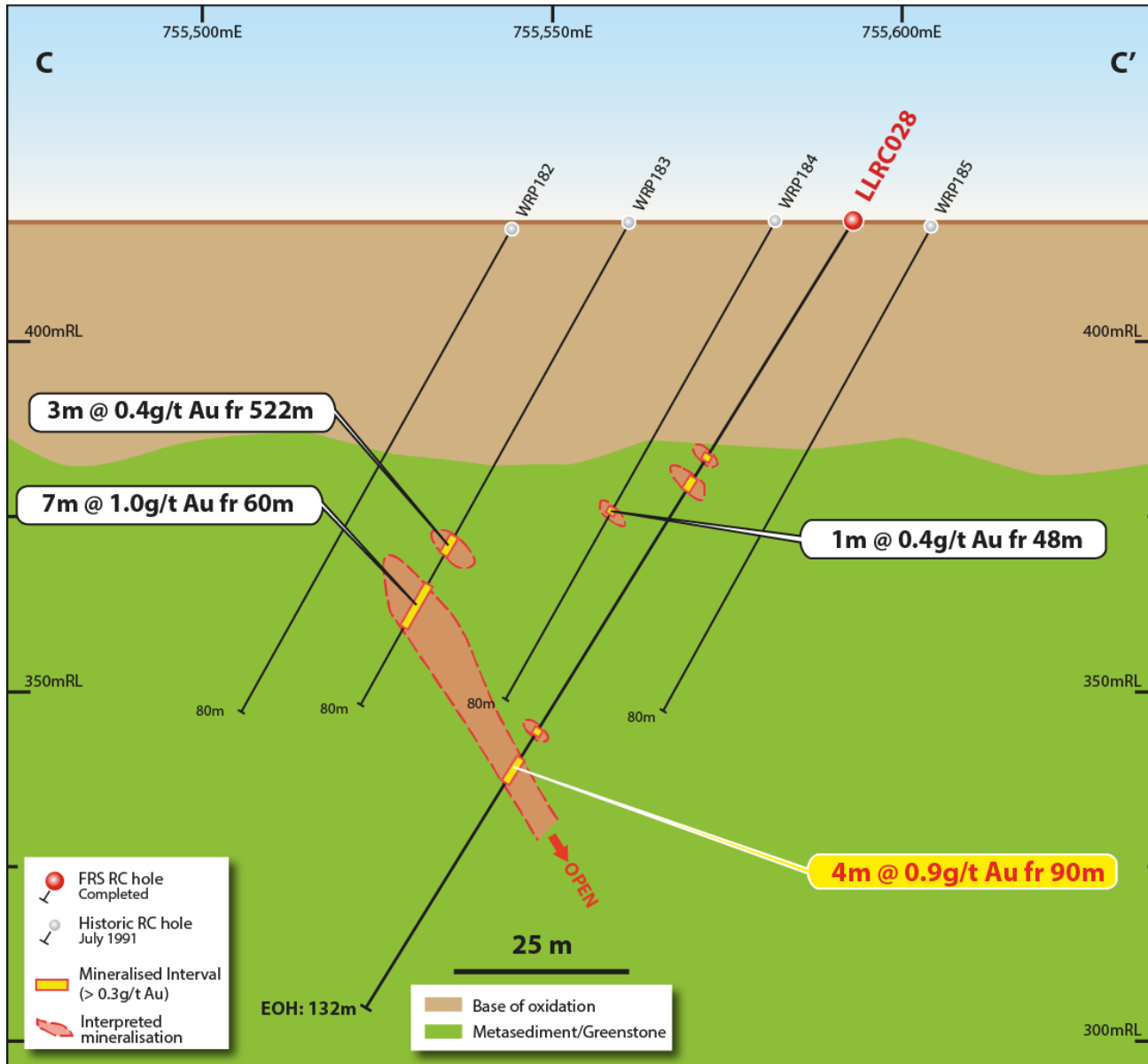


Figure 15. Cross section (C-C'), looking north ~10m along strike, showing Au mineralisation of historic drilling. Drilling intercept widths are down-hole widths and not true widths. Intercepts are based on a cut-off grade of 0.3g/t Au, allowing for internal dilution by two "waste" or sub-grade (<0.3g/t Au) samples.

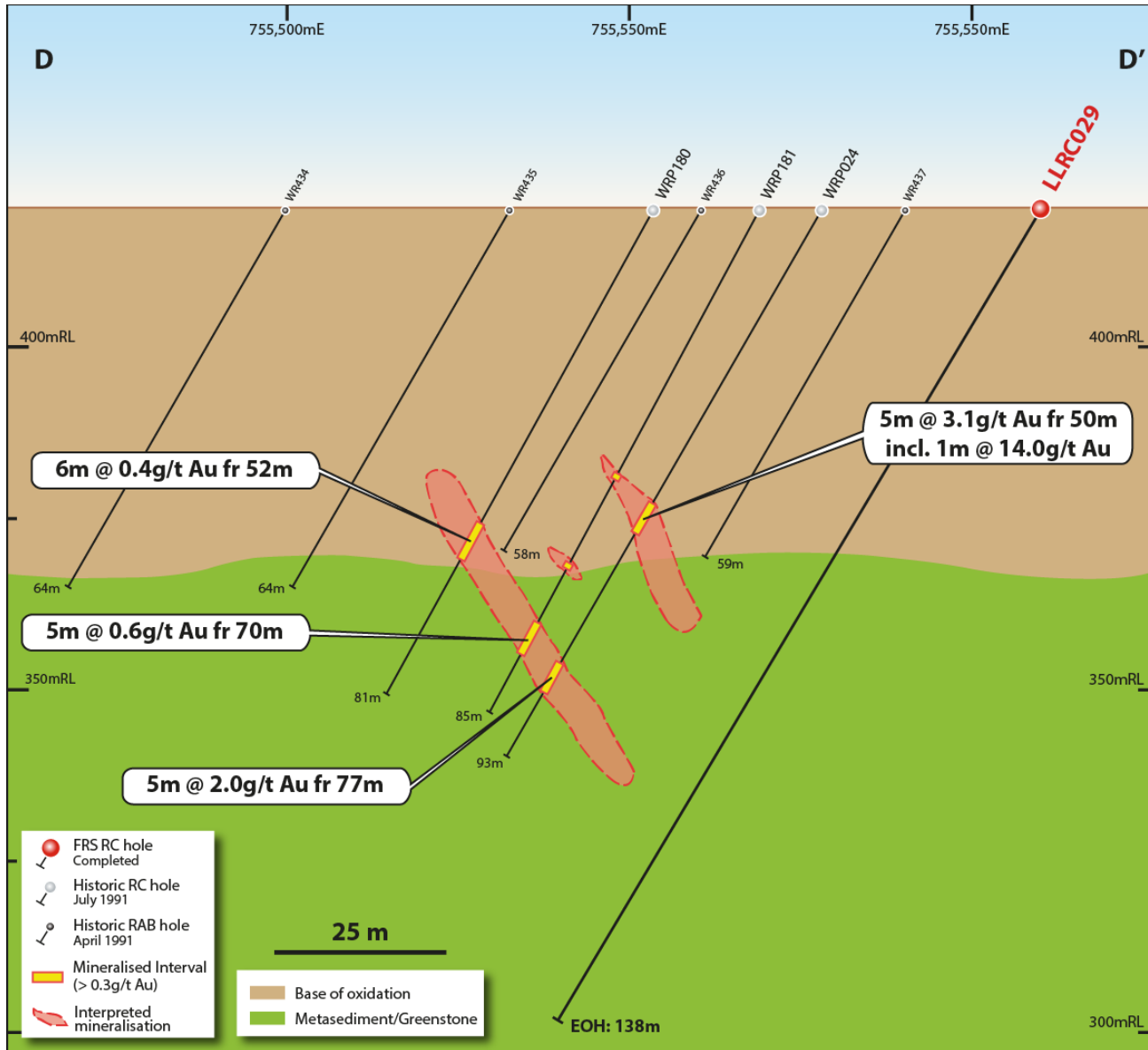


Figure 16. Cross section (D-D'), looking north ~10m along strike, showing Au mineralisation of historic drilling. Drilling intercept widths are down-hole widths and not true widths. Intercepts are based on a cut-off grade of 0.3g/t Au, allowing for internal dilution by two "waste" or sub-grade (<0.3g/t Au) samples.

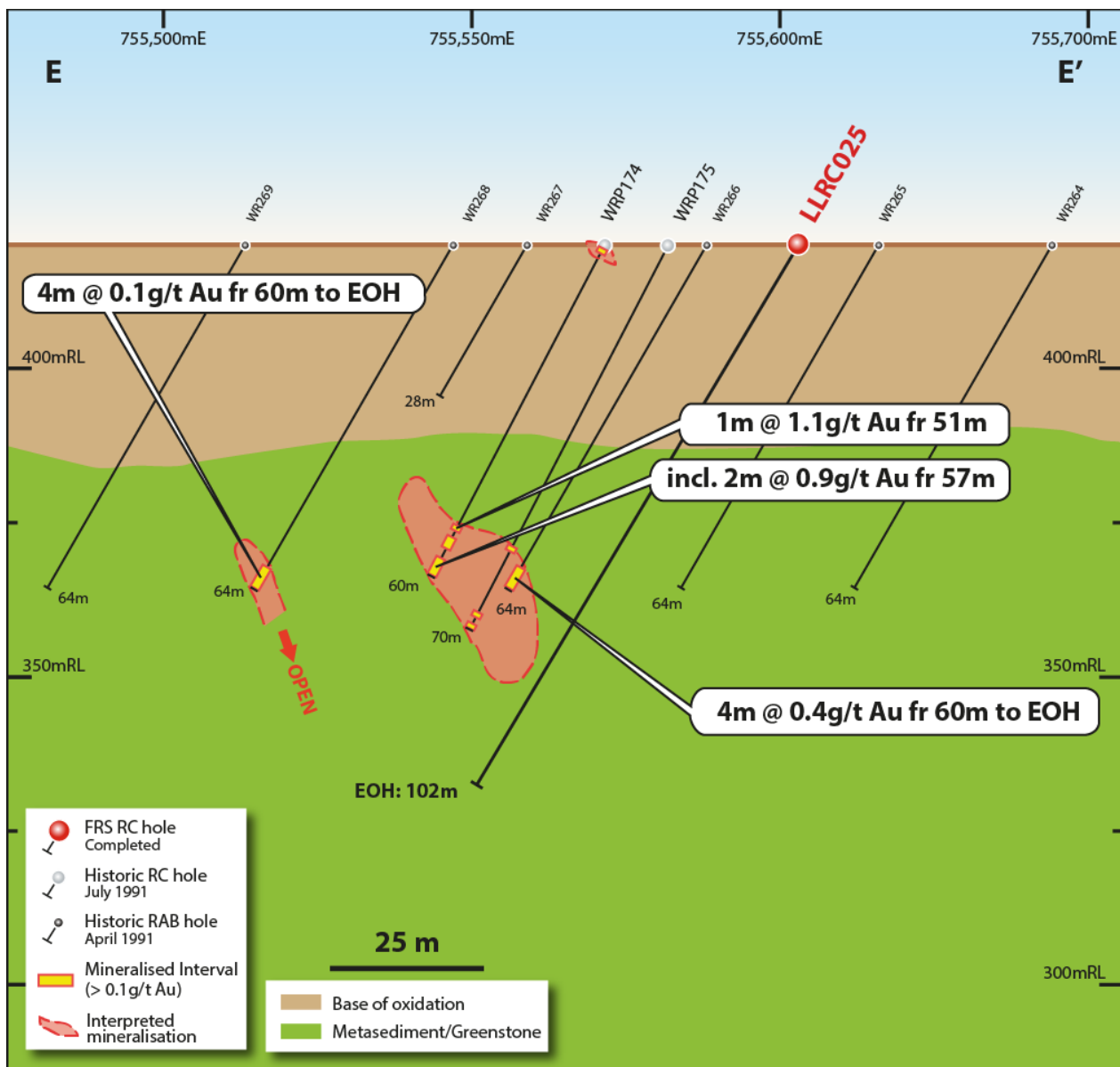


Figure 17. Cross section (E-E'), looking north ~10m along strike, showing Au mineralisation of historic drilling. Drilling intercept widths are down-hole widths and not true widths. Intercepts are based on a cut-off grade of 0.3g/t Au, allowing for internal dilution by two "waste" or sub-grade (<0.3g/t Au) samples, with the exception of WR268.

Table 1: Collar locations for FRS completed RC drill holes at Lady Lila, MGA94_50.

Hole_ID	Max_Depth	NAT_East	NAT_North	NAT_RL	Azimuth	Dip
LLRC001	138	755689	6430013	424	270	-60
LLRC002	60	755614	6430011	425	270	-60
LLRC003	126	755692	6429849	420	270	-60
LLRC004	138	755706	6429859	420	270	-60
LLRC005	132	755668	6430011	425	270	-60
LLRC006	150	755700	6429913	418	270	-60
LLRC007	132	755678	6429760	415	270	-60
LLRC008	132	755699	6429758	414	270	-60
LLRC009	138	755700	6429809	414	270	-60
LLRC010	124	755678	6430062	425	270	-60
LLRC011	126	755711	6430060	424	270	-60
LLRC012	144	755686	6429961	421	270	-60
LLRC013	139	755702	6429958	422	270	-60
LLRC014	144	755717	6429808	414	270	-60
LLRC015	180	755727	6429858	420	266	-60
LLRC016	90	755627	6430112	420	269	-61
LLRC017	108	755647	6430112	420	270	-60
LLRC018	72	755584	6430157	420	269	-60
LLRC019	54	755653	6430157	420	269	-60
LLRC020	114	755652	6430157	420	270	-59
LLRC021	120	755672	6430157	420	271	-59
LLRC022	60	755564	6430210	420	270	-59
LLRC023	84	755604	6430210	420	269	-59
LLRC024	96	755644	6430211	420	268	-59
LLRC025	102	755603	6430458	420	271	-59
LLRC026	84	755585	6431458	420	270	-60
LLRC027	132	755607	6431258	412	269	-59
LLRC028	132	755593	6431158	419	271	-59
LLRC029	138	755610	6431059	418	271	-59

personal use only

Table 2: Lady Lila, FRS drilling results showing all sample results for Au. Table shows down hole width and not true width.

Hole_ID	From	To	Au_ppm
LLRC001	0	4	0.04
LLRC001	4	8	0.01
LLRC001	8	12	<0.01
LLRC001	12	16	<0.01
LLRC001	16	20	<0.01
LLRC001	20	24	<0.01
LLRC001	24	28	<0.01
LLRC001	28	32	<0.01
LLRC001	32	36	0.02
LLRC001	36	40	<0.01
LLRC001	40	44	<0.01
LLRC001	44	48	<0.01
LLRC001	48	52	<0.01
LLRC001	52	56	<0.01
LLRC001	56	60	0.01
LLRC001	60	64	<0.01
LLRC001	64	68	0.01
LLRC001	68	72	<0.01
LLRC001	72	76	<0.01
LLRC001	76	80	<0.01
LLRC001	80	84	<0.01
LLRC001	84	88	<0.01
LLRC001	88	92	<0.01
LLRC001	92	96	<0.01
LLRC001	96	100	<0.01
LLRC001	100	104	<0.01
LLRC001	104	108	0.02
LLRC001	108	109	0.03
LLRC001	109	110	0.18
LLRC001	110	111	0.05

personal use only

Hole_ID	From	To	Au_ppm
LLRC001	111	112	0.06
LLRC001	112	113	0.04
LLRC001	113	114	0.04
LLRC001	114	115	0.21
LLRC001	115	116	0.36
LLRC001	116	117	0.02
LLRC001	117	118	0.02
LLRC001	118	119	0.01
LLRC001	119	120	1.16
LLRC001	120	121	0.13
LLRC001	121	122	0.19
LLRC001	122	123	0.05
LLRC001	123	124	0.27
LLRC001	124	125	0.03
LLRC001	125	126	0.10
LLRC001	126	127	0.04
LLRC001	127	128	0.20
LLRC001	128	129	0.71
LLRC001	129	130	0.16
LLRC001	130	131	0.05
LLRC001	131	132	0.02
LLRC001	132	133	0.03
LLRC001	133	134	0.02
LLRC001	134	135	0.02
LLRC001	135	136	0.03
LLRC001	136	137	<0.01
LLRC001	137	138	<0.01
LLRC002	0	4	0.01
LLRC002	4	5	0.04
LLRC002	5	6	0.03
LLRC002	6	7	0.05

Hole_ID	From	To	Au_ppm
LLRC002	7	8	0.02
LLRC002	8	9	<0.01
LLRC002	9	10	0.01
LLRC002	10	11	4.71
LLRC002	11	12	3.41
LLRC002	12	13	6.23
LLRC002	13	14	0.13
LLRC002	14	15	0.14
LLRC002	15	16	0.17
LLRC002	16	17	0.04
LLRC002	17	18	0.02
LLRC002	18	19	0.04
LLRC002	19	20	0.01
LLRC002	20	24	0.01
LLRC002	24	28	0.06
LLRC002	28	32	<0.01
LLRC002	32	36	<0.01
LLRC002	36	40	0.02
LLRC002	40	44	<0.01
LLRC002	44	48	<0.01
LLRC002	48	52	<0.01
LLRC002	52	56	0.01
LLRC002	56	60	<0.01
LLRC003	0	4	<0.01
LLRC003	4	8	<0.01
LLRC003	8	12	<0.01
LLRC003	12	16	<0.01
LLRC003	16	20	<0.01
LLRC003	20	24	<0.01
LLRC003	24	28	<0.01
LLRC003	28	32	<0.01

Hole_ID	From	To	Au_ppm
LLRC003	32	36	<0.01
LLRC003	36	40	0.03
LLRC003	40	44	0.07
LLRC003	44	48	0.01
LLRC003	48	52	<0.01
LLRC003	52	56	<0.01
LLRC003	56	60	<0.01
LLRC003	60	64	0.01
LLRC003	64	68	0.01
LLRC003	68	72	0.01
LLRC003	72	76	0.01
LLRC003	76	80	<0.01
LLRC003	80	84	<0.01
LLRC003	84	85	0.03
LLRC003	85	86	0.03
LLRC003	86	87	0.03
LLRC003	87	88	0.02
LLRC003	88	89	0.01
LLRC003	89	90	0.03
LLRC003	90	91	0.24
LLRC003	91	92	0.65
LLRC003	92	93	0.27
LLRC003	93	94	1.04
LLRC003	94	95	0.87
LLRC003	95	96	2.21
LLRC003	96	97	2.22
LLRC003	97	98	0.89
LLRC003	98	99	1.41
LLRC003	99	100	3.53
LLRC003	100	101	3.15
LLRC003	101	102	6.90

Hole_ID	From	To	Au_ppm
LLRC003	102	103	1.93
LLRC003	103	104	1.14
LLRC003	104	105	0.32
LLRC003	105	106	0.09
LLRC003	106	107	0.04
LLRC003	107	108	0.02
LLRC003	108	112	0.01
LLRC003	112	116	0.01
LLRC003	116	120	0.01
LLRC003	120	124	<0.01
LLRC003	124	126	<0.01
LLRC004	0	4	<0.01
LLRC004	4	8	<0.01
LLRC004	8	12	<0.01
LLRC004	12	16	<0.01
LLRC004	16	20	<0.01
LLRC004	20	24	<0.01
LLRC004	24	28	<0.01
LLRC004	28	32	<0.01
LLRC004	32	36	<0.01
LLRC004	36	40	<0.01
LLRC004	40	44	<0.01
LLRC004	44	48	<0.01
LLRC004	48	52	<0.01
LLRC004	52	56	<0.01
LLRC004	56	60	<0.01
LLRC004	60	64	<0.01
LLRC004	64	68	<0.01
LLRC004	68	72	<0.01
LLRC004	72	76	0.01
LLRC004	76	80	0.01

Hole_ID	From	To	Au_ppm
LLRC004	80	84	<0.01
LLRC004	84	88	<0.01
LLRC004	88	92	<0.01
LLRC004	92	96	<0.01
LLRC004	96	100	<0.01
LLRC004	100	104	0.01
LLRC004	104	108	<0.01
LLRC004	108	112	0.01
LLRC004	112	113	0.02
LLRC004	113	114	0.02
LLRC004	114	115	0.05
LLRC004	115	116	0.38
LLRC004	116	117	1.65
LLRC004	117	118	0.27
LLRC004	118	119	0.21
LLRC004	119	120	4.42
LLRC004	120	121	0.50
LLRC004	121	122	0.05
LLRC004	122	123	0.30
LLRC004	123	124	0.74
LLRC004	124	125	1.83
LLRC004	125	126	1.39
LLRC004	126	127	1.13
LLRC004	127	128	0.66
LLRC004	128	129	0.43
LLRC004	129	130	0.02
LLRC004	130	131	0.07
LLRC004	131	132	0.05
LLRC004	132	133	0.04
LLRC004	133	134	<0.01
LLRC004	134	135	<0.01

Hole_ID	From	To	Au_ppm
LLRC004	135	136	0.01
LLRC004	136	138	0.01
LLRC005	0	4	0.04
LLRC005	4	8	<0.01
LLRC005	8	12	<0.01
LLRC005	12	16	<0.01
LLRC005	16	20	<0.01
LLRC005	20	24	<0.01
LLRC005	24	28	0.09
LLRC005	28	32	<0.01
LLRC005	32	36	0.01
LLRC005	36	40	<0.01
LLRC005	40	44	<0.01
LLRC005	44	48	0.03
LLRC005	48	52	<0.01
LLRC005	52	56	<0.01
LLRC005	56	60	<0.01
LLRC005	60	64	<0.01
LLRC005	64	68	0.02
LLRC005	68	72	<0.01
LLRC005	72	76	0.01
LLRC005	76	80	0.01
LLRC005	80	81	0.03
LLRC005	81	82	0.13
LLRC005	82	83	0.26
LLRC005	83	84	0.06
LLRC005	84	85	0.07
LLRC005	85	86	0.83
LLRC005	86	87	1.22
LLRC005	87	88	0.38
LLRC005	88	89	1.25

Hole_ID	From	To	Au_ppm
LLRC005	89	90	0.36
LLRC005	90	91	0.05
LLRC005	91	92	0.02
LLRC005	92	93	0.02
LLRC005	93	94	0.02
LLRC005	94	95	0.02
LLRC005	95	96	0.32
LLRC005	96	97	0.14
LLRC005	97	98	0.45
LLRC005	98	99	0.07
LLRC005	99	100	0.04
LLRC005	100	101	0.01
LLRC005	101	102	0.03
LLRC005	102	103	0.02
LLRC005	103	104	0.21
LLRC005	104	105	0.56
LLRC005	105	106	0.08
LLRC005	106	107	0.02
LLRC005	107	108	0.01
LLRC005	108	112	0.01
LLRC005	112	116	<0.01
LLRC005	116	120	<0.01
LLRC005	120	124	<0.01
LLRC005	124	128	<0.01
LLRC005	128	132	<0.01
LLRC006	0	4	0.01
LLRC006	4	8	0.01
LLRC006	8	12	<0.01
LLRC006	12	16	<0.01
LLRC006	16	20	<0.01
LLRC006	20	24	<0.01

Hole_ID	From	To	Au_ppm
LLRC006	24	28	<0.01
LLRC006	28	32	<0.01
LLRC006	32	36	<0.01
LLRC006	36	40	<0.01
LLRC006	40	44	<0.01
LLRC006	44	48	<0.01
LLRC006	48	52	<0.01
LLRC006	52	56	<0.01
LLRC006	56	60	<0.01
LLRC006	60	64	<0.01
LLRC006	64	68	0.01
LLRC006	68	72	<0.01
LLRC006	72	76	<0.01
LLRC006	76	80	<0.01
LLRC006	80	84	<0.01
LLRC006	84	88	<0.01
LLRC006	88	92	<0.01
LLRC006	92	96	<0.01
LLRC006	96	100	<0.01
LLRC006	100	104	0.01
LLRC006	104	105	0.02
LLRC006	105	106	0.03
LLRC006	106	107	0.02
LLRC006	107	108	0.02
LLRC006	108	109	0.02
LLRC006	109	110	0.07
LLRC006	110	111	0.18
LLRC006	111	112	0.13
LLRC006	112	113	0.13
LLRC006	113	114	0.02
LLRC006	114	115	0.29

Hole_ID	From	To	Au_ppm
LLRC006	115	116	1.55
LLRC006	116	117	0.18
LLRC006	117	118	0.45
LLRC006	118	119	0.05
LLRC006	119	120	0.07
LLRC006	120	121	0.07
LLRC006	121	122	0.12
LLRC006	122	123	0.22
LLRC006	123	124	0.83
LLRC006	124	128	0.08
LLRC006	128	132	0.01
LLRC006	132	136	0.01
LLRC006	136	140	<0.01
LLRC006	140	144	<0.01
LLRC006	144	148	<0.01
LLRC006	148	149	0.01
LLRC006	149	150	0.01
LLRC007	0	4	0.01
LLRC007	4	8	<0.01
LLRC007	8	12	<0.01
LLRC007	12	16	<0.01
LLRC007	16	20	<0.01
LLRC007	20	24	<0.01
LLRC007	24	28	<0.01
LLRC007	28	32	<0.01
LLRC007	32	36	<0.01
LLRC007	36	40	<0.01
LLRC007	40	41	0.01
LLRC007	41	42	<0.01
LLRC007	42	43	<0.01
LLRC007	43	44	0.01

Hole_ID	From	To	Au_ppm
LLRC007	44	45	0.31
LLRC007	45	46	0.03
LLRC007	46	47	0.01
LLRC007	47	48	0.01
LLRC007	48	49	0.01
LLRC007	49	50	0.01
LLRC007	50	51	0.05
LLRC007	51	52	0.06
LLRC007	52	53	0.11
LLRC007	53	54	0.01
LLRC007	54	55	0.32
LLRC007	55	56	0.03
LLRC007	56	57	0.06
LLRC007	57	58	0.05
LLRC007	58	59	0.01
LLRC007	59	60	0.03
LLRC007	60	61	0.87
LLRC007	61	62	0.05
LLRC007	62	63	0.01
LLRC007	63	64	0.03
LLRC007	64	65	0.55
LLRC007	65	66	2.18
LLRC007	66	67	1.87
LLRC007	67	68	3.06
LLRC007	68	69	4.48
LLRC007	69	70	2.88
LLRC007	70	71	0.51
LLRC007	71	72	0.43
LLRC007	72	73	0.06
LLRC007	73	74	0.05
LLRC007	74	75	0.05

Hole_ID	From	To	Au_ppm
LLRC007	75	76	0.13
LLRC007	76	80	0.05
LLRC007	80	84	0.01
LLRC007	84	88	0.01
LLRC007	88	92	0.02
LLRC007	92	96	0.02
LLRC007	96	100	<0.01
LLRC007	100	104	<0.01
LLRC007	104	108	<0.01
LLRC007	108	112	<0.01
LLRC007	112	116	0.01
LLRC007	116	120	<0.01
LLRC007	120	124	<0.01
LLRC007	124	128	<0.01
LLRC007	128	132	<0.01
LLRC008	0	4	0.01
LLRC008	4	8	<0.01
LLRC008	8	12	<0.01
LLRC008	12	16	<0.01
LLRC008	16	20	<0.01
LLRC008	20	24	<0.01
LLRC008	24	28	<0.01
LLRC008	28	32	<0.01
LLRC008	32	36	<0.01
LLRC008	36	40	<0.01
LLRC008	40	44	<0.01
LLRC008	44	48	<0.01
LLRC008	48	52	<0.01
LLRC008	52	56	<0.01
LLRC008	56	57	<0.01
LLRC008	57	58	0.01

Hole_ID	From	To	Au_ppm
LLRC008	58	59	<0.01
LLRC008	59	60	0.01
LLRC008	60	61	0.55
LLRC008	61	62	0.01
LLRC008	62	63	0.05
LLRC008	63	64	0.05
LLRC008	64	65	0.03
LLRC008	65	66	0.01
LLRC008	66	67	0.02
LLRC008	67	68	0.01
LLRC008	68	72	0.02
LLRC008	72	76	<0.01
LLRC008	76	80	<0.01
LLRC008	80	84	<0.01
LLRC008	84	88	<0.01
LLRC008	88	92	0.01
LLRC008	92	96	0.09
LLRC008	96	97	0.08
LLRC008	97	98	0.05
LLRC008	98	99	0.09
LLRC008	99	100	0.20
LLRC008	100	101	0.46
LLRC008	101	102	0.18
LLRC008	102	103	0.27
LLRC008	103	104	0.04
LLRC008	104	105	0.37
LLRC008	105	106	0.10
LLRC008	106	107	0.06
LLRC008	107	108	0.47
LLRC008	108	109	0.67
LLRC008	109	110	0.98

Hole_ID	From	To	Au_ppm
LLRC008	110	111	0.21
LLRC008	111	112	0.02
LLRC008	112	113	0.04
LLRC008	113	114	0.04
LLRC008	114	115	0.01
LLRC008	115	116	0.01
LLRC008	116	120	0.04
LLRC008	120	124	<0.01
LLRC008	124	128	<0.01
LLRC008	128	132	0.01
LLRC009	0	4	<0.01
LLRC009	4	8	<0.01
LLRC009	8	12	<0.01
LLRC009	12	16	<0.01
LLRC009	16	20	<0.01
LLRC009	20	24	<0.01
LLRC009	24	28	<0.01
LLRC009	28	32	<0.01
LLRC009	32	36	<0.01
LLRC009	36	40	<0.01
LLRC009	40	44	<0.01
LLRC009	44	48	<0.01
LLRC009	48	52	<0.01
LLRC009	52	56	0.02
LLRC009	56	60	0.04
LLRC009	60	64	<0.01
LLRC009	64	68	0.01
LLRC009	68	72	<0.01
LLRC009	72	76	<0.01
LLRC009	76	80	<0.01
LLRC009	80	84	<0.01

Hole_ID	From	To	Au_ppm
LLRC009	84	88	<0.01
LLRC009	88	92	<0.01
LLRC009	92	96	<0.01
LLRC009	96	100	0.01
LLRC009	100	104	0.01
LLRC009	104	105	0.03
LLRC009	105	106	0.03
LLRC009	106	107	0.04
LLRC009	107	108	0.10
LLRC009	108	109	0.04
LLRC009	109	110	0.14
LLRC009	110	111	0.89
LLRC009	111	112	1.57
LLRC009	112	113	10.82
LLRC009	113	114	6.57
LLRC009	114	115	0.18
LLRC009	115	116	0.11
LLRC009	116	117	0.09
LLRC009	117	118	0.04
LLRC009	118	119	0.03
LLRC009	119	120	0.01
LLRC009	120	124	0.01
LLRC009	124	128	0.01
LLRC009	128	132	0.01
LLRC009	132	136	0.01
LLRC009	136	138	<0.01
LLRC010	0	4	0.06
LLRC010	4	8	0.01
LLRC010	8	12	<0.01
LLRC010	12	16	<0.01
LLRC010	16	20	<0.01

Hole_ID	From	To	Au_ppm
LLRC010	20	24	0.03
LLRC010	24	28	<0.01
LLRC010	28	32	<0.01
LLRC010	32	36	<0.01
LLRC010	36	40	<0.01
LLRC010	40	44	<0.01
LLRC010	44	48	<0.01
LLRC010	48	52	<0.01
LLRC010	52	56	<0.01
LLRC010	56	60	0.01
LLRC010	60	64	<0.01
LLRC010	64	68	<0.01
LLRC010	68	72	<0.01
LLRC010	72	76	<0.01
LLRC010	76	80	<0.01
LLRC010	80	84	<0.01
LLRC010	84	88	<0.01
LLRC010	88	92	<0.01
LLRC010	92	96	0.01
LLRC010	96	100	<0.01
LLRC010	100	104	0.01
LLRC010	104	108	0.06
LLRC010	108	112	0.03
LLRC010	112	113	0.01
LLRC010	113	114	0.01
LLRC010	114	115	0.01
LLRC010	115	116	0.08
LLRC010	116	117	0.44
LLRC010	117	118	0.33
LLRC010	118	119	2.65
LLRC010	119	120	0.21

Hole_ID	From	To	Au_ppm
LLRC010	120	121	0.42
LLRC010	121	122	0.35
LLRC010	122	123	0.07
LLRC010	123	124	0.04
LLRC011	0	4	0.05
LLRC011	4	8	0.01
LLRC011	8	12	<0.01
LLRC011	12	16	<0.01
LLRC011	16	20	<0.01
LLRC011	20	24	<0.01
LLRC011	24	28	0.01
LLRC011	28	32	<0.01
LLRC011	32	36	<0.01
LLRC011	36	40	<0.01
LLRC011	40	44	<0.01
LLRC011	44	48	0.03
LLRC011	48	52	<0.01
LLRC011	52	56	<0.01
LLRC011	56	60	<0.01
LLRC011	60	64	<0.01
LLRC011	64	68	<0.01
LLRC011	68	72	<0.01
LLRC011	72	76	<0.01
LLRC011	76	80	<0.01
LLRC011	80	84	<0.01
LLRC011	84	88	<0.01
LLRC011	88	92	<0.01
LLRC011	92	96	<0.01
LLRC011	96	100	<0.01
LLRC011	100	104	<0.01
LLRC011	104	108	<0.01

Hole_ID	From	To	Au_ppm
LLRC011	108	112	<0.01
LLRC011	112	116	<0.01
LLRC011	116	120	<0.01
LLRC011	120	124	<0.01
LLRC011	124	126	<0.01
LLRC012	0	4	0.01
LLRC012	4	8	<0.01
LLRC012	8	12	<0.01
LLRC012	12	16	<0.01
LLRC012	16	20	<0.01
LLRC012	20	24	<0.01
LLRC012	24	28	<0.01
LLRC012	28	32	<0.01
LLRC012	32	36	0.02
LLRC012	36	40	<0.01
LLRC012	40	44	<0.01
LLRC012	44	48	<0.01
LLRC012	48	52	0.01
LLRC012	52	56	0.01
LLRC012	56	60	<0.01
LLRC012	60	64	<0.01
LLRC012	64	68	0.05
LLRC012	68	72	<0.01
LLRC012	72	76	0.01
LLRC012	76	80	0.01
LLRC012	80	84	0.01
LLRC012	84	88	<0.01
LLRC012	88	92	<0.01
LLRC012	92	96	0.01
LLRC012	96	97	0.01
LLRC012	97	98	0.02

Hole_ID	From	To	Au_ppm
LLRC012	98	99	0.04
LLRC012	99	100	0.03
LLRC012	100	101	1.86
LLRC012	101	102	0.35
LLRC012	102	103	0.07
LLRC012	103	104	0.02
LLRC012	104	105	0.03
LLRC012	105	106	0.05
LLRC012	106	107	0.05
LLRC012	107	108	0.03
LLRC012	108	109	0.11
LLRC012	109	110	0.13
LLRC012	110	111	0.91
LLRC012	111	112	0.87
LLRC012	112	113	0.04
LLRC012	113	114	0.02
LLRC012	114	115	<0.01
LLRC012	115	116	<0.01
LLRC012	116	120	0.09
LLRC012	120	124	0.01
LLRC012	124	125	0.02
LLRC012	125	128	0.01
LLRC012	128	132	<0.01
LLRC012	132	136	<0.01
LLRC012	136	137	0.01
LLRC012	137	138	0.01
LLRC012	138	140	<0.01
LLRC012	140	144	<0.01
LLRC013	0	4	0.05
LLRC013	4	8	0.01
LLRC013	8	12	<0.01

Hole_ID	From	To	Au_ppm
LLRC013	12	16	<0.01
LLRC013	16	20	<0.01
LLRC013	20	24	<0.01
LLRC013	24	28	<0.01
LLRC013	28	32	0.03
LLRC013	32	36	0.01
LLRC013	36	40	0.01
LLRC013	40	44	<0.01
LLRC013	44	48	<0.01
LLRC013	48	52	<0.01
LLRC013	52	56	<0.01
LLRC013	56	60	<0.01
LLRC013	60	64	<0.01
LLRC013	64	68	0.01
LLRC013	68	72	<0.01
LLRC013	72	76	0.01
LLRC013	76	80	0.01
LLRC013	80	84	0.01
LLRC013	84	88	0.01
LLRC013	88	92	0.01
LLRC013	92	96	<0.01
LLRC013	96	100	<0.01
LLRC013	100	104	<0.01
LLRC013	104	108	<0.01
LLRC013	108	109	0.01
LLRC013	109	110	0.01
LLRC013	110	111	0.01
LLRC013	111	112	0.02
LLRC013	112	113	<0.01
LLRC013	113	114	0.02
LLRC013	114	115	0.01

Hole_ID	From	To	Au_ppm
LLRC013	115	116	0.33
LLRC013	116	117	1.37
LLRC013	117	118	0.67
LLRC013	118	119	0.98
LLRC013	119	120	0.06
LLRC013	120	121	0.06
LLRC013	121	122	0.06
LLRC013	122	123	0.13
LLRC013	123	124	0.08
LLRC013	124	125	0.11
LLRC013	125	126	0.07
LLRC013	126	127	0.05
LLRC013	127	128	0.13
LLRC013	128	129	0.74
LLRC013	129	130	2.09
LLRC013	130	131	1.13
LLRC013	131	132	1.47
LLRC013	132	133	0.19
LLRC013	133	134	0.12
LLRC013	134	135	0.04
LLRC013	135	136	0.03
LLRC013	136	137	0.07
LLRC013	137	138	0.06
LLRC013	138	139	0.09
LLRC014	0	4	<0.01
LLRC014	4	8	<0.01
LLRC014	8	12	<0.01
LLRC014	12	16	<0.01
LLRC014	16	20	<0.01
LLRC014	20	24	<0.01
LLRC014	24	28	<0.01

Hole_ID	From	To	Au_ppm
LLRC014	28	32	<0.01
LLRC014	32	36	<0.01
LLRC014	36	40	0.05
LLRC014	40	41	<0.01
LLRC014	41	42	0.02
LLRC014	42	43	0.02
LLRC014	43	44	<0.01
LLRC014	44	45	<0.01
LLRC014	45	46	0.42
LLRC014	46	47	0.03
LLRC014	47	48	0.01
LLRC014	48	49	0.01
LLRC014	49	50	<0.01
LLRC014	50	51	0.01
LLRC014	51	52	0.01
LLRC014	52	56	<0.01
LLRC014	56	60	<0.01
LLRC014	60	64	<0.01
LLRC014	64	68	<0.01
LLRC014	68	72	<0.01
LLRC014	72	76	<0.01
LLRC014	76	80	<0.01
LLRC014	80	84	<0.01
LLRC014	84	88	<0.01
LLRC014	88	92	<0.01
LLRC014	92	96	<0.01
LLRC014	96	100	<0.01
LLRC014	100	104	<0.01
LLRC014	104	108	<0.01
LLRC014	108	112	<0.01
LLRC014	112	116	<0.01

Hole_ID	From	To	Au_ppm
LLRC014	116	120	0.01
LLRC014	120	124	<0.01
LLRC014	124	125	0.02
LLRC014	125	126	0.10
LLRC014	126	127	0.19
LLRC014	127	128	0.18
LLRC014	128	129	0.17
LLRC014	129	130	0.33
LLRC014	130	131	0.24
LLRC014	131	132	0.53
LLRC014	132	133	0.73
LLRC014	133	134	0.56
LLRC014	134	135	0.48
LLRC014	135	136	0.35
LLRC014	136	137	0.08
LLRC014	137	138	0.03
LLRC014	138	139	0.02
LLRC014	139	140	0.01
LLRC014	140	144	0.01
LLRC015	0	4	0.01
LLRC015	4	8	0.02
LLRC015	8	12	0.02
LLRC015	12	16	0.02
LLRC015	16	20	0.01
LLRC015	20	24	0.02
LLRC015	24	28	0.01
LLRC015	28	32	0.01
LLRC015	32	36	0.02
LLRC015	36	40	0.01
LLRC015	40	44	0.01
LLRC015	44	48	0.01

Hole_ID	From	To	Au_ppm
LLRC015	48	52	0.01
LLRC015	52	56	0.01
LLRC015	56	60	0.02
LLRC015	60	64	0.02
LLRC015	64	68	0.01
LLRC015	68	72	0.01
LLRC015	72	76	0.01
LLRC015	76	80	0.01
LLRC015	80	84	0.01
LLRC015	84	88	0.01
LLRC015	88	92	0.01
LLRC015	92	96	0.01
LLRC015	96	100	0.01
LLRC015	100	104	0.02
LLRC015	104	108	0.02
LLRC015	108	112	0.01
LLRC015	112	116	0.01
LLRC015	116	120	0.02
LLRC015	120	124	0.02
LLRC015	124	128	0.02
LLRC015	128	129	0.01
LLRC015	129	130	0.21
LLRC015	130	131	0.06
LLRC015	131	132	0.02
LLRC015	132	133	0.02
LLRC015	133	134	0.02
LLRC015	134	135	0.02
LLRC015	135	136	0.33
LLRC015	136	137	1.32
LLRC015	137	138	0.07
LLRC015	138	139	0.10

Hole_ID	From	To	Au_ppm
LLRC015	139	140	0.26
LLRC015	140	141	2.49
LLRC015	141	142	0.33
LLRC015	142	143	1.03
LLRC015	143	144	0.19
LLRC015	144	145	0.06
LLRC015	145	146	0.04
LLRC015	146	147	0.01
LLRC015	147	148	0.01
LLRC015	148	152	0.02
LLRC015	152	156	0.04
LLRC015	156	160	0.02
LLRC015	160	164	0.02
LLRC015	164	168	0.02
LLRC015	168	172	0.01
LLRC015	172	176	0.02
LLRC015	176	180	0.03
LLRC016	0	1	0.04
LLRC016	1	2	0.24
LLRC016	2	3	0.43
LLRC016	3	4	0.03
LLRC016	4	5	0.01
LLRC016	5	6	0.03
LLRC016	6	7	0.02
LLRC016	7	8	0.02
LLRC016	8	12	0.02
LLRC016	12	16	0.02
LLRC016	16	20	0.01
LLRC016	20	24	0.01
LLRC016	24	28	0.02
LLRC016	28	32	0.05

Hole_ID	From	To	Au_ppm
LLRC016	32	36	0.03
LLRC016	36	37	0.02
LLRC016	37	38	0.02
LLRC016	38	39	<0.01
LLRC016	39	40	0.04
LLRC016	40	41	0.17
LLRC016	41	42	2.05
LLRC016	42	43	0.07
LLRC016	43	44	0.01
LLRC016	44	45	<0.01
LLRC016	45	46	<0.01
LLRC016	46	47	0.01
LLRC016	47	48	0.08
LLRC016	48	49	0.09
LLRC016	49	50	0.02
LLRC016	50	51	0.04
LLRC016	51	52	0.01
LLRC016	52	53	0.01
LLRC016	53	54	0.10
LLRC016	54	55	0.03
LLRC016	55	56	0.01
LLRC016	56	57	0.01
LLRC016	57	58	0.77
LLRC016	58	59	0.07
LLRC016	59	60	0.04
LLRC016	60	61	0.06
LLRC016	61	62	0.04
LLRC016	62	63	0.31
LLRC016	63	64	0.20
LLRC016	64	65	0.08
LLRC016	65	66	0.21

Hole_ID	From	To	Au_ppm
LLRC016	66	67	0.28
LLRC016	67	68	0.21
LLRC016	68	69	0.14
LLRC016	69	70	0.11
LLRC016	70	71	0.07
LLRC016	71	72	0.06
LLRC016	72	73	0.01
LLRC016	73	74	0.02
LLRC016	74	75	0.06
LLRC016	75	76	0.23
LLRC016	76	77	0.06
LLRC016	77	78	0.15
LLRC016	78	79	0.14
LLRC016	79	80	0.17
LLRC016	80	81	0.16
LLRC016	81	82	0.07
LLRC016	82	83	0.12
LLRC016	83	84	0.08
LLRC016	84	85	0.02
LLRC016	85	86	0.06
LLRC016	86	87	0.07
LLRC016	87	88	0.42
LLRC016	88	89	0.59
LLRC016	89	90	1.92
LLRC017	0	1	0.02
LLRC017	1	2	0.28
LLRC017	2	3	0.11
LLRC017	3	4	0.04
LLRC017	4	5	0.02
LLRC017	5	6	0.02
LLRC017	6	7	0.02

personal use only

Hole_ID	From	To	Au_ppm
LLRC017	7	8	0.02
LLRC017	8	12	0.03
LLRC017	12	16	0.02
LLRC017	16	20	0.02
LLRC017	20	24	0.02
LLRC017	24	28	0.02
LLRC017	28	32	0.05
LLRC017	32	36	0.02
LLRC017	36	40	0.01
LLRC017	40	44	-<0.01
LLRC017	44	48	0.02
LLRC017	48	52	-<0.01
LLRC017	52	56	0.01
LLRC017	56	60	0.03
LLRC017	60	64	0.01
LLRC017	64	68	0.01
LLRC017	68	72	0.01
LLRC017	72	76	0.07
LLRC017	76	77	0.38
LLRC017	77	78	0.03
LLRC017	78	79	0.01
LLRC017	79	80	0.01
LLRC017	80	81	0.09
LLRC017	81	82	0.11
LLRC017	82	83	2.24
LLRC017	83	84	0.33
LLRC017	84	85	0.26
LLRC017	85	86	0.10
LLRC017	86	87	0.98
LLRC017	87	88	5.54
LLRC017	88	89	0.25

Hole_ID	From	To	Au_ppm
LLRC017	89	90	0.63
LLRC017	90	91	4.49
LLRC017	91	92	0.19
LLRC017	92	93	3.05
LLRC017	93	94	0.14
LLRC017	94	95	0.14
LLRC017	95	96	0.49
LLRC017	96	97	0.37
LLRC017	97	98	0.07
LLRC017	98	99	0.29
LLRC017	99	100	0.20
LLRC017	100	101	0.11
LLRC017	101	102	0.06
LLRC017	102	103	0.11
LLRC017	103	104	0.12
LLRC017	104	105	0.02
LLRC017	105	106	<0.01
LLRC017	106	107	0.01
LLRC017	107	108	0.01
LLRC018	0	1	0.02
LLRC018	1	2	0.62
LLRC018	2	3	0.12
LLRC018	3	4	0.05
LLRC018	4	5	1.78
LLRC018	5	6	0.16
LLRC018	6	7	0.01
LLRC018	7	8	0.02
LLRC018	8	9	0.02
LLRC018	9	10	<0.01
LLRC018	10	11	<0.01
LLRC018	11	12	<0.01

Hole_ID	From	To	Au_ppm
LLRC018	12	16	0.01
LLRC018	16	20	0.01
LLRC018	20	24	0.01
LLRC018	24	28	<0.01
LLRC018	28	32	0.01
LLRC018	32	36	0.02
LLRC018	36	40	0.01
LLRC018	40	44	<0.01
LLRC018	44	48	<0.01
LLRC018	48	52	0.01
LLRC018	52	56	0.01
LLRC018	56	60	<0.01
LLRC018	60	64	<0.01
LLRC018	64	68	<0.01
LLRC018	68	72	0.02
LLRC019	0	1	0.01
LLRC019	1	2	0.67
LLRC019	2	3	0.59
LLRC019	3	4	0.22
LLRC019	4	5	0.05
LLRC019	5	6	0.04
LLRC019	6	7	0.02
LLRC019	7	8	<0.01
LLRC019	8	12	0.02
LLRC019	12	16	0.01
LLRC019	16	20	<0.01
LLRC019	20	24	<0.01
LLRC019	24	28	0.01
LLRC019	28	32	0.03
LLRC019	32	36	0.01
LLRC019	36	40	0.01

Hole_ID	From	To	Au_ppm
LLRC019	40	44	0.01
LLRC019	44	48	-<0.01
LLRC019	48	52	0.01
LLRC019	52	54	0.05
LLRC020	0	1	0.01
LLRC020	1	2	0.07
LLRC020	2	3	0.66
LLRC020	3	4	0.19
LLRC020	4	5	0.05
LLRC020	5	6	0.06
LLRC020	6	7	0.03
LLRC020	7	8	0.01
LLRC020	8	12	0.02
LLRC020	12	16	0.01
LLRC020	16	20	0.01
LLRC020	20	24	0.01
LLRC020	24	28	-<0.01
LLRC020	28	32	-<0.01
LLRC020	32	36	0.01
LLRC020	36	40	-<0.01
LLRC020	40	44	0.01
LLRC020	44	48	0.02
LLRC020	48	52	-<0.01
LLRC020	52	56	-<0.01
LLRC020	56	60	-<0.01
LLRC020	60	64	-<0.01
LLRC020	64	68	0.01
LLRC020	68	72	0.01
LLRC020	72	76	0.02
LLRC020	76	80	0.03
LLRC020	80	84	0.01

Hole_ID	From	To	Au_ppm
LLRC020	84	85	<0.01
LLRC020	85	86	<0.01
LLRC020	86	87	0.07
LLRC020	87	88	0.67
LLRC020	88	89	0.07
LLRC020	89	90	1.90
LLRC020	90	91	0.02
LLRC020	91	92	0.04
LLRC020	92	93	0.53
LLRC020	93	94	0.82
LLRC020	94	95	2.42
LLRC020	95	96	0.67
LLRC020	96	97	0.37
LLRC020	97	98	7.36
LLRC020	98	99	0.03
LLRC020	99	100	0.01
LLRC020	100	101	0.02
LLRC020	101	102	0.04
LLRC020	102	103	0.24
LLRC020	103	104	0.47
LLRC020	104	105	0.10
LLRC020	105	106	0.06
LLRC020	106	107	0.08
LLRC020	107	108	0.01
LLRC020	108	112	0.04
LLRC020	112	114	0.08
LLRC021	0	4	0.03
LLRC021	4	8	0.02
LLRC021	8	12	0.01
LLRC021	12	16	0.01
LLRC021	16	20	0.01

Hole_ID	From	To	Au_ppm
LLRC021	20	24	0.01
LLRC021	24	28	0.01
LLRC021	28	32	0.01
LLRC021	32	36	0.03
LLRC021	36	40	0.01
LLRC021	40	44	0.01
LLRC021	44	48	0.01
LLRC021	48	52	0.01
LLRC021	52	56	0.01
LLRC021	56	60	0.01
LLRC021	60	64	0.04
LLRC021	64	68	0.02
LLRC021	68	72	0.02
LLRC021	72	76	0.02
LLRC021	76	80	0.02
LLRC021	80	84	0.01
LLRC021	84	88	0.01
LLRC021	88	92	0.02
LLRC021	92	96	0.02
LLRC021	96	100	0.02
LLRC021	100	104	0.03
LLRC021	104	105	0.02
LLRC021	105	106	0.01
LLRC021	106	107	0.01
LLRC021	107	108	0.01
LLRC021	108	109	0.07
LLRC021	109	110	0.05
LLRC021	110	111	0.13
LLRC021	111	112	0.48
LLRC021	112	113	0.06
LLRC021	113	114	0.03

Hole_ID	From	To	Au_ppm
LLRC021	114	115	0.53
LLRC021	115	116	0.13
LLRC021	116	117	0.02
LLRC021	117	118	0.09
LLRC021	118	119	0.06
LLRC021	119	120	0.05
LLRC022	0	1	0.03
LLRC022	1	2	0.21
LLRC022	2	3	0.09
LLRC022	3	4	0.08
LLRC022	4	5	0.06
LLRC022	5	6	0.31
LLRC022	6	7	0.18
LLRC022	7	8	0.09
LLRC022	8	9	0.01
LLRC022	9	10	0.01
LLRC022	10	11	<0.01
LLRC022	11	12	<0.01
LLRC022	12	16	0.01
LLRC022	16	20	0.01
LLRC022	20	24	0.01
LLRC022	24	28	0.01
LLRC022	28	32	0.01
LLRC022	32	36	0.01
LLRC022	36	40	0.01
LLRC022	40	44	0.01
LLRC022	44	48	0.01
LLRC022	48	52	0.01
LLRC022	52	56	0.01
LLRC022	56	60	0.01
LLRC023	0	4	0.03

Hole_ID	From	To	Au_ppm
LLRC023	4	8	0.01
LLRC023	8	12	0.01
LLRC023	12	16	0.01
LLRC023	16	20	0.01
LLRC023	20	24	0.01
LLRC023	24	28	0.02
LLRC023	28	32	0.02
LLRC023	36	37	0.02
LLRC023	37	38	<0.01
LLRC023	38	39	0.01
LLRC023	39	40	0.01
LLRC023	40	41	15.14
LLRC023	41	42	0.34
LLRC023	42	43	0.47
LLRC023	43	44	0.25
LLRC023	44	45	<0.01
LLRC023	45	46	0.01
LLRC023	46	47	0.01
LLRC023	47	48	<0.01
LLRC023	56	57	<0.01
LLRC023	57	58	0.01
LLRC023	58	59	0.01
LLRC023	59	60	<0.01
LLRC023	60	61	0.10
LLRC023	61	62	0.18
LLRC023	62	63	0.02
LLRC023	63	64	0.02
LLRC023	64	65	0.02
LLRC023	65	66	0.02
LLRC023	66	67	0.09
LLRC023	67	68	0.06

Hole_ID	From	To	Au_ppm
LLRC023	68	72	0.03
LLRC023	72	76	0.01
LLRC023	76	80	0.01
LLRC023	80	84	0.03
LLRC024	0	4	0.02
LLRC024	4	8	0.01
LLRC024	8	12	-<0.01
LLRC024	12	16	-<0.01
LLRC024	16	20	0.01
LLRC024	20	24	-<0.01
LLRC024	24	28	0.01
LLRC024	28	32	0.01
LLRC024	32	36	0.01
LLRC024	36	40	0.01
LLRC024	40	44	-<0.01
LLRC024	44	48	-<0.01
LLRC024	52	53	<0.01
LLRC024	53	54	<0.01
LLRC024	54	55	<0.01
LLRC024	55	56	<0.01
LLRC024	56	57	0.22
LLRC024	57	58	0.04
LLRC024	58	59	0.02
LLRC024	59	60	0.04
LLRC024	60	61	0.04
LLRC024	61	62	0.02
LLRC024	62	63	0.06
LLRC024	63	64	0.25
LLRC024	64	68	0.07
LLRC024	68	72	0.01
LLRC024	72	76	0.03

Hole_ID	From	To	Au_ppm
LLRC024	76	80	0.01
LLRC024	80	84	0.02
LLRC024	84	85	0.01
LLRC024	85	86	<0.01
LLRC024	86	87	0.04
LLRC024	87	88	0.19
LLRC024	88	89	0.17
LLRC024	89	90	0.01
LLRC024	90	91	1.66
LLRC024	91	92	1.73
LLRC024	92	93	0.05
LLRC024	93	94	0.02
LLRC024	94	95	0.02
LLRC024	95	96	0.01
LLRC025	0	4	0.02
LLRC025	4	8	0.01
LLRC025	8	12	0.01
LLRC025	12	16	0.01
LLRC025	16	20	0.01
LLRC025	20	24	-<0.01
LLRC025	24	28	-<0.01
LLRC025	28	32	0.01
LLRC025	32	36	0.01
LLRC025	36	40	-<0.01
LLRC025	40	44	0.01
LLRC025	44	48	0.01
LLRC025	48	52	0.08
LLRC025	52	56	0.01
LLRC025	56	60	0.01
LLRC025	60	64	0.01
LLRC025	64	68	0.01

Hole_ID	From	To	Au_ppm
LLRC025	68	72	0.01
LLRC025	72	76	0.02
LLRC025	76	80	0.05
LLRC025	80	84	0.02
LLRC025	84	88	0.01
LLRC025	88	92	0.06
LLRC025	92	96	0.07
LLRC025	96	100	0.02
LLRC025	100	102	0.01
LLRC026	0	4	0.01
LLRC026	4	8	0.01
LLRC026	8	12	0.01
LLRC026	12	16	0.01
LLRC026	16	20	0.01
LLRC026	20	24	0.01
LLRC026	24	28	<0.01
LLRC026	28	32	0.01
LLRC026	32	36	0.01
LLRC026	36	40	0.01
LLRC026	40	44	0.01
LLRC026	44	48	0.02
LLRC026	48	52	0.01
LLRC026	52	56	0.01
LLRC026	56	60	0.02
LLRC026	60	64	0.01
LLRC026	64	68	0.01
LLRC026	68	72	0.01
LLRC026	72	76	0.01
LLRC026	76	80	0.02
LLRC026	80	84	0.02
LLRC027	0	4	0.01

Hole_ID	From	To	Au_ppm
LLRC027	4	8	0.01
LLRC027	8	12	0.01
LLRC027	12	16	0.01
LLRC027	16	20	0.02
LLRC027	20	24	0.01
LLRC027	24	28	0.01
LLRC027	28	32	0.01
LLRC027	32	36	0.01
LLRC027	36	40	0.01
LLRC027	40	44	0.01
LLRC027	44	48	0.01
LLRC027	48	52	0.01
LLRC027	52	56	0.01
LLRC027	56	60	0.02
LLRC027	60	64	0.01
LLRC027	64	68	0.02
LLRC027	68	72	0.01
LLRC027	72	76	0.01
LLRC027	76	80	0.01
LLRC027	80	84	0.01
LLRC027	84	88	0.02
LLRC027	88	89	0.02
LLRC027	89	90	0.03
LLRC027	90	91	0.03
LLRC027	91	92	0.03
LLRC027	92	93	0.03
LLRC027	93	94	0.27
LLRC027	94	95	0.07
LLRC027	95	96	0.04
LLRC027	96	97	<0.01
LLRC027	97	98	<0.01

Hole_ID	From	To	Au_ppm
LLRC027	98	99	<0.01
LLRC027	99	100	0.01
LLRC027	100	101	<0.01
LLRC027	101	102	<0.01
LLRC027	102	103	<0.01
LLRC027	103	104	0.01
LLRC027	104	105	0.09
LLRC027	105	106	0.30
LLRC027	106	107	0.37
LLRC027	107	108	0.02
LLRC027	108	109	0.01
LLRC027	109	110	0.07
LLRC027	110	111	0.01
LLRC027	111	112	0.02
LLRC027	112	113	0.02
LLRC027	113	114	0.13
LLRC027	114	115	0.19
LLRC027	115	116	0.74
LLRC027	116	117	0.64
LLRC027	117	118	0.25
LLRC027	118	119	0.06
LLRC027	119	120	0.03
LLRC027	120	121	0.01
LLRC027	121	122	0.03
LLRC027	122	123	0.01
LLRC027	123	124	<0.01
LLRC027	124	128	0.01
LLRC027	128	132	0.01
LLRC028	0	4	0.01
LLRC028	4	8	0.01
LLRC028	8	12	0.01

Hole_ID	From	To	Au_ppm
LLRC028	12	16	0.01
LLRC028	16	20	<0.01
LLRC028	20	24	<0.01
LLRC028	24	28	0.01
LLRC028	28	32	<0.01
LLRC028	32	36	0.01
LLRC028	36	37	<0.01
LLRC028	37	38	<0.01
LLRC028	38	39	<0.01
LLRC028	39	40	0.49
LLRC028	40	41	0.07
LLRC028	41	42	0.04
LLRC028	42	43	0.01
LLRC028	43	44	0.39
LLRC028	44	45	0.11
LLRC028	45	46	0.01
LLRC028	46	47	0.01
LLRC028	47	48	0.01
LLRC028	48	52	0.01
LLRC028	52	56	<0.01
LLRC028	56	60	0.02
LLRC028	60	64	0.01
LLRC028	64	68	0.03
LLRC028	68	72	0.06
LLRC028	72	76	0.04
LLRC028	76	80	0.01
LLRC028	80	84	0.02
LLRC028	84	85	0.10
LLRC028	85	86	0.34
LLRC028	86	87	0.01
LLRC028	87	88	0.01

Hole_ID	From	To	Au_ppm
LLRC028	88	89	<0.01
LLRC028	89	90	0.01
LLRC028	90	91	0.31
LLRC028	91	92	0.96
LLRC028	92	93	1.33
LLRC028	93	94	1.16
LLRC028	94	95	0.05
LLRC028	95	96	0.03
LLRC028	96	97	0.02
LLRC028	97	98	<0.01
LLRC028	98	99	0.01
LLRC028	99	100	0.01
LLRC028	100	104	0.02
LLRC028	104	108	0.01
LLRC028	120	124	0.03
LLRC028	124	128	0.03
LLRC028	128	132	0.03
LLRC029	0	4	0.01
LLRC029	4	8	0.01
LLRC029	8	12	0.01
LLRC029	12	16	0.02
LLRC029	16	20	0.01
LLRC029	20	24	0.02
LLRC029	24	28	0.01
LLRC029	28	32	0.01
LLRC029	32	36	0.01
LLRC029	36	40	0.01
LLRC029	40	44	0.01
LLRC029	44	48	0.01
LLRC029	48	52	0.01
LLRC029	52	56	0.01

Hole_ID	From	To	Au_ppm
LLRC029	56	60	0.01
LLRC029	60	64	0.01
LLRC029	64	68	0.02
LLRC029	68	72	0.01
LLRC029	72	76	0.01
LLRC029	76	80	0.01
LLRC029	80	84	0.01
LLRC029	84	88	0.01
LLRC029	88	92	0.02
LLRC029	92	96	0.05
LLRC029	96	100	0.03
LLRC029	100	104	0.03
LLRC029	104	108	0.01
LLRC029	108	109	0.01
LLRC029	109	110	0.06
LLRC029	110	111	<0.01
LLRC029	111	112	0.02
LLRC029	112	113	<0.01
LLRC029	113	114	0.02
LLRC029	114	115	0.14
LLRC029	115	116	0.09
LLRC029	116	117	0.01
LLRC029	117	118	0.01
LLRC029	118	119	<0.01
LLRC029	119	120	0.01
LLRC029	120	124	0.01
LLRC029	124	128	0.01
LLRC029	128	132	0.02
LLRC029	132	136	0.03
LLRC029	136	138	0.03

Table 3: All significant intercepts from Lady Lila (including historic drilling results) along with grams per metre. Intercepts are based on a cut-off grade of 0.3g/t Au allowing for internal dilution by two “waste” or sub-grade (<0.3g/t Au) samples. Drilling intercept widths are down-hole widths and not true widths.

Hole_ID	Depth_From	Depth_To	IntervalWidth	Grade	Gram/metre
FLLRC006	24	32	8	7.23	57.84
FLLRC002	69	85	16	3.19	51.04
WR616	42	46	4	9.47	37.88
WRP069	53	65	12	3	36
WRP079	38	45	7	4.44	31.08
FLLRC010	74	89	15	2.05	30.75
WRP080	68	89	21	1.33	27.93
LLRC003	91	105	14	1.89	26.46
WRP173	55	59	4	6.43	25.72
WRP169	50	66	16	1.47	23.52
WR629	42	51	9	2.4	21.6
WRP165	46	64	18	1.16	20.88
FLLRC004	69	79	10	2.03	20.3
WRP162	59	82	23	0.88	20.24
LLRC009	110	114	4	4.96	19.84
LLRC017	82	97	15	1.28	19.2
FLLRC001	45	56	11	1.63	17.93
FLLRC009	52	64	12	1.49	17.88
WRP079	31	35	4	4.15	16.6
LLRC023	40	43	3	5.32	15.96
LLRC007	64	72	8	1.99	15.92
WRP024	50	55	5	3.14	15.7
FLLRC007	65	71	6	2.61	15.66
WRP167	25	37	12	1.26	15.12
LLRC020	87	98	11	1.35	14.85
WRP072	51	71	20	0.72	14.4
LLRC002	10	13	3	4.78	14.34
LLRC004	115	129	14	1	14

Hole_ID	Depth_From	Depth_To	IntervalWidth	Grade	Gram/metre
FLLRC005	43	52	9	1.53	13.77
WR602	11	20	9	1.49	13.41
WRP172	19	36	17	0.75	12.75
WRP070	71	85	14	0.8	11.2
WR221	40	52	12	0.87	10.44
WRP024	77	82	5	2	10
WRP071	67	70	3	3.17	9.51
WR601	34	39	5	1.76	8.8
FLLRC003	36	43	7	1.24	8.68
WRP168	63	69	6	1.43	8.58
WRP169	34	35	1	8.13	8.13
WRP183	60	67	7	1	7
LLRC013	128	132	4	1.36	5.44
WRP170	74	76	2	2.65	5.3
WRP010	0	3	3	1.71	5.13
FLLRC001	37	42	5	0.98	4.9
LLRC010	116	122	6	0.74	4.44
LLRC005	85	90	5	0.81	4.05
WR219	3	5	2	2.02	4.04
FLLRC005	33	39	6	0.64	3.84
LLRC015	140	143	3	1.28	3.84
LLRC028	90	94	4	0.94	3.76
WRP071	38	39	1	3.76	3.76
WRP166	78	80	2	1.82	3.64
FLLRC007	54	61	7	0.51	3.57
LLRC024	90	92	2	1.69	3.38
LLRC013	115	119	4	0.84	3.36
LLRC014	129	136	7	0.46	3.22
WRP008	48	52	4	0.78	3.12
WR596	38	40	2	1.5	3
LLRC016	87	90	3	0.98	2.94

Hole_ID	Depth_From	Depth_To	IntervalWidth	Grade	Gram/metre
WRP181	70	75	5	0.58	2.9
WR624	45	50	5	0.57	2.85
LLRC008	104	110	6	0.44	2.64
LLRC018	1	5	4	0.64	2.56
WRP180	52	58	6	0.41	2.46
WRP167	46	50	4	0.57	2.28
FLLRC003	29	33	4	0.56	2.24
LLRC012	100	102	2	1.11	2.22
LLRC006	115	118	3	0.73	2.19
LLRC016	41	42	1	2.05	2.05
WR602	27	29	2	0.97	1.94
WR616	35	37	2	0.97	1.94
WRP177	66	68	2	0.94	1.88
WR624	36	40	4	0.45	1.8
WRP174	57	59	2	0.9	1.8
WRP009	75	81	6	0.3	1.8
LLRC012	110	112	2	0.89	1.78
WR220	40	45	5	0.34	1.7
WRP071	61	64	3	0.56	1.68
LLRC015	135	137	2	0.83	1.66
WR266	60	64	4	0.36	1.44
LLRC027	115	117	2	0.69	1.38
FLLRC004	40	44	4	0.34	1.36
WRP165	30	34	4	0.34	1.36
LLRC019	1	3	2	0.63	1.26
WRP168	73	74	1	1.22	1.22
WRP183	52	55	3	0.4	1.2
LLRC001	119	120	1	1.16	1.16
WRP173	40	41	1	1.15	1.15
WRP174	51	52	1	1.1	1.1
LLRC021	111	115	4	0.27	1.08

Hole_ID	Depth_From	Depth_To	IntervalWidth	Grade	Gram/metre
WR596	45	46	1	0.99	0.99
WRP008	40	43	3	0.32	0.96
LLRC005	95	98	3	0.3	0.9
LLRC007	60	61	1	0.87	0.87
FVHR031	64	65	1	0.86	0.86
WRP071	44	45	1	0.86	0.86
WRP169	23	25	2	0.42	0.84
LLRC006	123	124	1	0.83	0.83
WRP172	3	6	3	0.26	0.78
LLRC016	57	58	1	0.77	0.77
LLRC001	128	129	1	0.71	0.71
LLRC027	105	107	2	0.34	0.68
LLRC020	2	3	1	0.66	0.66
WRP009	89	90	1	0.6	0.6
WRP172	15	16	1	0.6	0.6
LLRC005	104	105	1	0.56	0.56
LLRC008	60	61	1	0.55	0.55
WRP167	20	21	1	0.52	0.52
LLRC028	39	40	1	0.49	0.49
LLRC020	103	104	1	0.47	0.47
LLRC008	100	101	1	0.46	0.46
LLRC016	2	3	1	0.43	0.43
FVHR031	71	72	1	0.42	0.42
LLRC014	45	46	1	0.42	0.42
WRP177	48	49	1	0.42	0.42
WRP167	42	43	1	0.41	0.41
WRP169	75	76	1	0.4	0.4
LLRC028	43	44	1	0.39	0.39
LLRC017	76	77	1	0.38	0.38
WRP162	43	44	1	0.38	0.38
FLLRC001	31	32	1	0.37	0.37

Hole_ID	Depth_From	Depth_To	IntervalWidth	Grade	Gram/metre
LLRC001	115	116	1	0.36	0.36
FLLRC004	63	64	1	0.35	0.35
WRP184	48	49	1	0.35	0.35
LLRC028	85	86	1	0.34	0.34
LLRC007	54	55	1	0.32	0.32
WRP170	10	11	1	0.32	0.32
WRP181	60	61	1	0.32	0.32
LLRC007	44	45	1	0.31	0.31
LLRC016	62	63	1	0.31	0.31
LLRC022	5	6	1	0.31	0.31
WRP177	53	54	1	0.31	0.31
FLLRC009	31	32	1	0.3	0.3
WRP181	45	46	1	0.3	0.3

Table 4: All historic collar locations at the Lady Lila prospect (previously released), MGA94_50.

Hole_ID	Hole Type	Max_Depth	NAT_East	NAT_North	NAT_RL	Azimuth	Dip
FLLRC001	RC	60	755651	6429881	418	270	-60
FLLRC002	RC	96	755670	6429880	420	270	-60
FLLRC003	RC	60	755650	6429840	420	270	-60
FLLRC004	RC	90	755669	6429840	420	270	-60
FLLRC005	RC	60	755650	6429860	420	270	-60
FLLRC006	RC	60	755649	6429819	418	270	-60
FLLRC007	RC	90	755671	6429820	418	270	-60
FLLRC008	RC	40	755629	6429901	418	270	-60
FLLRC009	RC	76	755654	6429899	418	270	-60
FLLRC010	RC	100	755669	6429899	418	270	-60
FVHR020	RAB	75	755919	6426055	415	270	-60
FVHR021	RAB	75	755959	6426055	415	270	-60

Hole_ID	Hole Type	Max_Depth	NAT_East	NAT_North	NAT_RL	Azimuth	Dip
FVHR022	RAB	75	755999	6426055	415	270	-60
FVHR023	RAB	74	756039	6426054	415	270	-60
FVHR024	RAB	74	756079	6426054	415	270	-60
FVHR025	RAB	75	756119	6426054	415	270	-60
FVHR026	RAB	75	755861	6426455	415	270	-60
FVHR027	RAB	75	755901	6426455	415	270	-60
FVHR028	RAB	68	755941	6426455	415	270	-60
FVHR029	RAB	75	755981	6426455	415	270	-60
FVHR030	RAB	75	756021	6426455	415	270	-60
FVHR031	RAB	75	756061	6426454	415	270	-60
FVHR032	RAB	75	756101	6426454	415	270	-60
FVHR033	RAB	75	755845	6427255	415	270	-60
FVHR034	RAB	75	755885	6427255	415	270	-60
FVHR035	RAB	75	755925	6427255	415	270	-60
FVHR036	RAB	68	755965	6427255	415	270	-60
WR217	RAB	58	755466	6431257	414	270	-60
WR218	RAB	58	755492	6431257	414	270	-60
WR219	RAB	58	755518	6431258	414	270	-60
WR220	RAB	58	755547	6431258	414	270	-60
WR221	RAB	52	755575	6431262	410	270	-60
WR264	RAB	64	755644	6430458	417	270	-60
WR265	RAB	64	755616	6430458	417	270	-60
WR266	RAB	64	755588	6430458	417	270	-60
WR267	RAB	28	755559	6430458	417	270	-60
WR268	RAB	64	755547	6430458	417	270	-60
WR269	RAB	64	755512	6430457	415	270	-60
WR330	RAB	55	755498	6431258	414	90	-60
WR331	RAB	6	755508	6431258	414	0	-90
WR332	RAB	6	755524	6431258	414	0	-90

Hole_ID	Hole Type	Max_Depth	NAT_East	NAT_North	NAT_RL	Azimuth	Dip
WR333	RAB	6	755542	6431257	414	0	-90
WR434	RAB	64	755499	6431057	418	270	-60
WR435	RAB	64	755532	6431058	418	270	-60
WR436	RAB	58	755560	6431058	418	270	-60
WR437	RAB	59	755590	6431058	418	270	-60
WR438	RAB	58	755525	6430858	420	270	-60
WR439	RAB	58	755553	6430858	420	270	-60
WR440	RAB	55	755577	6430858	420	270	-60
WR441	RAB	64	755610	6430858	420	270	-60
WR442	RAB	64	755642	6430858	420	270	-60
WR443	RAB	60	755536	6430658	420	270	-60
WR444	RAB	40	755556	6430658	420	270	-60
WR445	RAB	64	755588	6430658	420	270	-60
WR446	RAB	64	755619	6430658	420	270	-60
WR447	RAB	64	755524	6430257	420	270	-60
WR448	RAB	64	755558	6430258	420	270	-60
WR449	RAB	64	755590	6430258	420	270	-60
WR450	RAB	61	755614	6430257	420	270	-60
WR540	RAB	63	755841	6431060	415	270	-60
WR596	RAB	53	755563	6431458	420	270	-60
WR597	RAB	44	755537	6431458	420	270	-60
WR598	RAB	60	755515	6431458	420	270	-60
WR599	RAB	72	755698	6430058	425	270	-60
WR600	RAB	72	755662	6430058	425	270	-60
WR601	RAB	39	755626	6430058	419	270	-60
WR602	RAB	30	755607	6430058	419	270	-60
WR603	RAB	72	755734	6430059	425	270	-60
WR605	RAB	40	755706	6428858	415	270	-60
WR606	RAB	51	755756	6428858	415	270	-60

Hole_ID	Hole Type	Max_Depth	NAT_East	NAT_North	NAT_RL	Azimuth	Dip
WR607	RAB	48	755806	6428859	415	270	-60
WR608	RAB	30	755856	6428859	415	270	-60
WR609	RAB	51	756069	6426860	415	270	-60
WR610	RAB	54	756119	6426860	415	270	-60
WR611	RAB	22	756169	6426860	415	270	-60
WR614	RAB	58	755597	6430058	419	270	-60
WR615	RAB	10.5	755624	6429858	420	270	-60
WR616	RAB	46	755649	6429858	420	270	-60
WR617	RAB	52	755673	6429861	420	270	-60
WR618	RAB	58	755614	6429858	420	270	-60
WR622	RAB	52	755637	6429858	420	270	-60
WR623	RAB	70	755623	6429958	416	270	-60
WR624	RAB	50	755648	6429958	417	270	-60
WR625	RAB	50	755650	6429758	415	270	-60
WR626	RAB	57	755675	6429658	418	270	-60
WR627	RAB	55	755650	6429658	418	270	-60
WR628	RAB	60	755708	6429659	418	270	-60
WR629	RAB	54	755604	6430157	421	270	-60
WR647	RAB	55	755690	6429758	415	270	-60
WR648	RAB	55	755670	6429758	415	270	-60
WR670	RAB	34	755956	6428860	415	270	-60
WR671	RAB	34	756006	6428860	415	270	-60
WR672	RAB	35	755906	6428859	415	270	-60
WR673	RAB	34	755656	6428858	415	270	-60
WR675	RAB	8	755969	6426859	415	270	-60
WR676	RAB	34	756019	6426859	415	270	-60
WR680	RAB	52	755762	6427858	415	90	-60
WR681	RAB	28	755788	6427858	415	90	-60
WR682	RAB	52	755802	6427858	415	90	-60

Hole_ID	Hole Type	Max_Depth	NAT_East	NAT_North	NAT_RL	Azimuth	Dip
WR683	RAB	40	755828	6427859	415	90	-60
WR684	RAB	42	755848	6427859	415	90	-60
WR685	RAB	54	755870	6427859	415	90	-60
WR686	RAB	78	755897	6427859	415	90	-60
WR687	RAB	67	755935	6427859	415	90	-60
WR688	RAB	64	755773	6427658	415	90	-60
WR689	RAB	68	755805	6427658	415	90	-60
WR690	RAB	59	755839	6427659	415	90	-60
WR691	RAB	46	755869	6427659	415	90	-60
WR692	RAB	52	755892	6427659	415	90	-60
WR693	RAB	52	755918	6427659	415	90	-60
WR694	RAB	51	755944	6427659	415	90	-60
WR695	RAB	82	755868	6427059	415	90	-60
WR696	RAB	70	755909	6427059	415	90	-60
WR697	RAB	34	755944	6427059	415	90	-60
WR698	RAB	48	755961	6427059	415	90	-60
WR699	RAB	58	755985	6427059	415	90	-60
WR700	RAB	3	755880	6426859	415	90	-60
WR701	RAB	2	755897	6426859	415	90	-60
WRP008	RC	61	755561	6431260	408	270	-60
WRP009	RC	111	755588	6431260	412	270	-60
WRP010	RC	63	755529	6431261	414	270	-60
WRP024	RC	93	755578	6431061	418	270	-60
WRP069	RC	80	755662	6429860	420	270	-60
WRP070	RC	85	755667	6429961	418	270	-60
WRP071	RC	110	755643	6430059	419	270	-60
WRP072	RC	80	755633	6430157	420	270	-60
WRP079	RC	60	755647	6429858	420	270	-60
WRP080	RC	93	755671	6429858	420	270	-60

Hole_ID	Hole Type	Max_Depth	NAT_East	NAT_North	NAT_RL	Azimuth	Dip
WRP161	RC	80	755650	6429811	418	266	-60
WRP162	RC	88	755670	6429810	417	268	-60
WRP163	RC	80	755691	6429810	417	269	-60
WRP164	RC	80	755632	6429912	417	268	-60
WRP165	RC	80	755653	6429910	418	267	-61
WRP166	RC	80	755673	6429909	418	270	-60
WRP167	RC	60	755639	6429961	417	267	-59
WRP168	RC	80	755654	6429961	418	268	-60
WRP169	RC	80	755639	6430011	425	269	-60
WRP170	RC	80	755658	6430011	425	265	-60
WRP171	RC	80	755680	6430011	425	267	-61
WRP172	RC	60	755617	6430060	419	267	-60
WRP173	RC	80	755632	6430059	419	267	-61
WRP174	RC	60	755571	6430456	417	268	-60
WRP175	RC	70	755582	6430457	417	269	-61
WRP176	RC	80	755545	6430960	416	266	-61
WRP177	RC	80	755566	6430960	416	268	-60
WRP178	RC	80	755586	6430961	417	266	-61
WRP179	RC	80	755605	6430962	418	268	-60
WRP180	RC	81	755553	6431060	417	267	-60
WRP181	RC	85	755569	6431059	418	269	-60
WRP182	RC	80	755544	6431157	417	265	-60
WRP183	RC	80	755561	6431159	418	267	-61
WRP184	RC	80	755582	6431159	419	266	-61
WRP185	RC	80	755604	6431159	417	265	-61