

12 September 2025 - ASX Announcement

# SOIL SAMPLING RESULTS OUTLINE NEW GOLD ZONES AT TOLE AND DADJAN

**Strong results deliver new drill targets and areas for discovery at Tole and Dadjan ahead of maiden drilling**

## Highlights

### Tole Gold Project

- New 2.3km-long zone of coherent soil anomalism at NE Tole, to be drill tested in the upcoming RC program (Fig.1).
- Assay result from across Tole include:
  - **>1,000 ppb Au** (SS31166)<sup>1</sup>
  - **575 ppb Au** (SS30164)
  - **450 ppb Au** (SS30192)
  - **448 ppb Au** (SS30289)
  - **380 ppb Au** (SS30062)
  - **206 ppb Au** (SS30602)
  - **293 ppb Au** (SS30940)
- Ahead of maiden drilling, soil sampling and trenching programs are ongoing at both Tole and Dadjan.

### Dadjan Gold Project

- Assay results from soil sampling include:
  - **975 ppb Au** (GSS10096)
  - **923 ppb Au** (GSS10258)
  - **254 ppb Au** (GSS10570)
  - **404 ppb Au** (SS31623)
- New zones to the North and South of the Dadjan Main Zone prospect have been identified for further testing.

<sup>1</sup>1000 ppb is the max limit of reporting for the analytical method used. Sample SS31166 has not been re-submitted for analysis yet (using a method with a higher detection limit).



**DeSoto Resources Limited (ASX:DES) (“DES” or the “Company”)** is pleased to announce further exploration results from its Dadjan and Tole Project's.

### Tole Project: Results and Further Work Plans

Recently completed soil sampling at NE Tole has delineated a coherent zone of gold-in-soil anomalies 2.3km in length (Fig.1).

Results confirm good continuity of mineralisation between the zones previously identified from rock chip and dump sampling<sup>2</sup>. The Company will test NE Tole in the upcoming drilling program following a trenching program, also now underway.

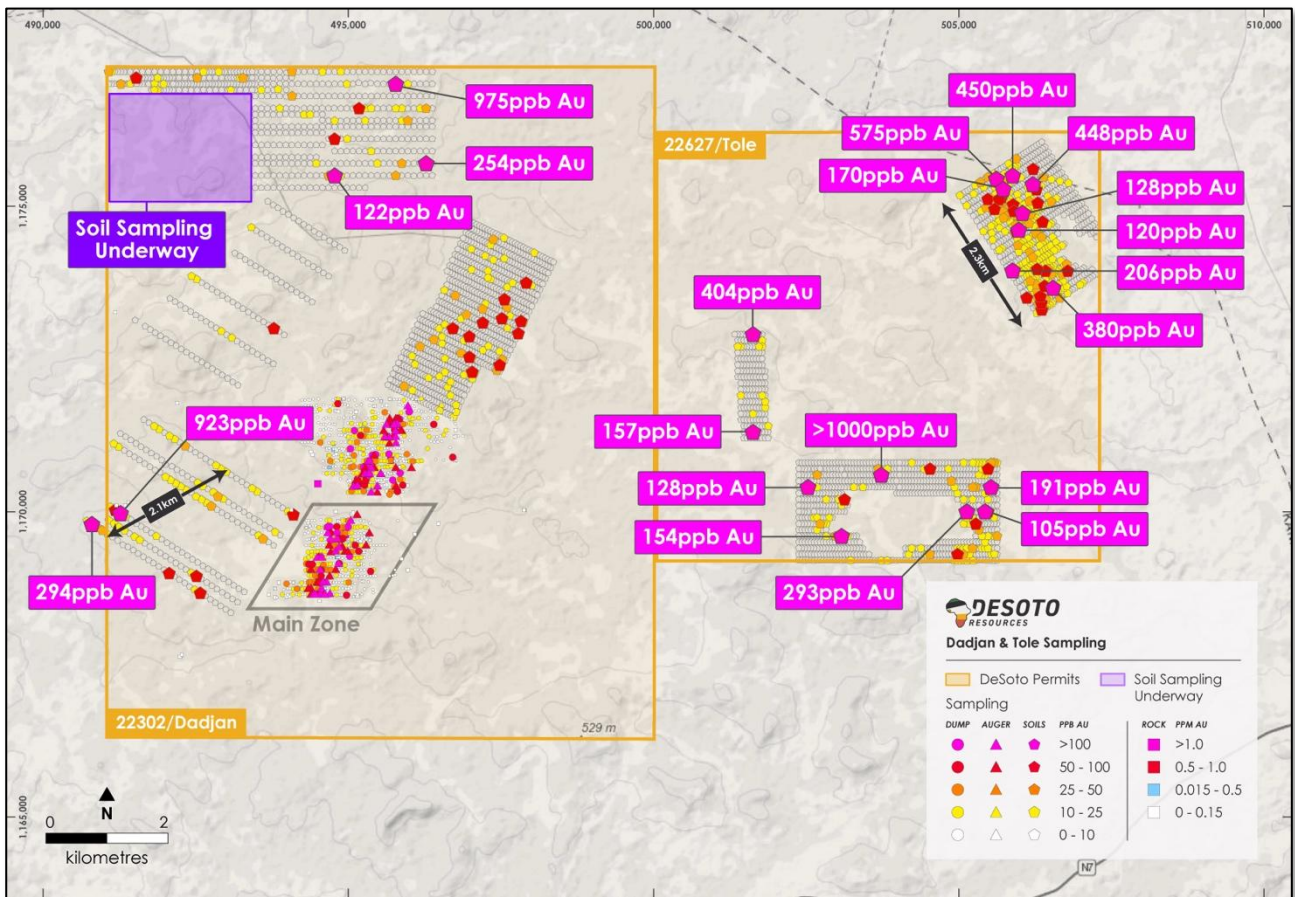


Figure 1: Dadjan and Tole soil sampling results including previously reported soil sampling results are also shown

### Dadjan Project: Results and Further Work Plans

The soil sampling program at Dadjan has produced some encouraging results, especially in the southwest of the tenement where values of up to 923ppb Au have been identified (Fig. 1).

<sup>2</sup>DES ASX Announcement: Guinea Exploration Update (24<sup>th</sup> July 2025)



Soil sampling is continuing in the northwest of the Dadjan tenement on a 100m x 50m grid. Two (2) trenches have been completed at Dadjan<sup>3</sup> with further trenches currently underway.

The Company is also continuing to explore its 934km<sup>2</sup> Siguiiri land holding with further exploration across Tole, Moiko, Alamankono, Oromo, Falama and Dabidiana Projects, all located in the Siguiiri Basin, Guinea (Fig. 2).

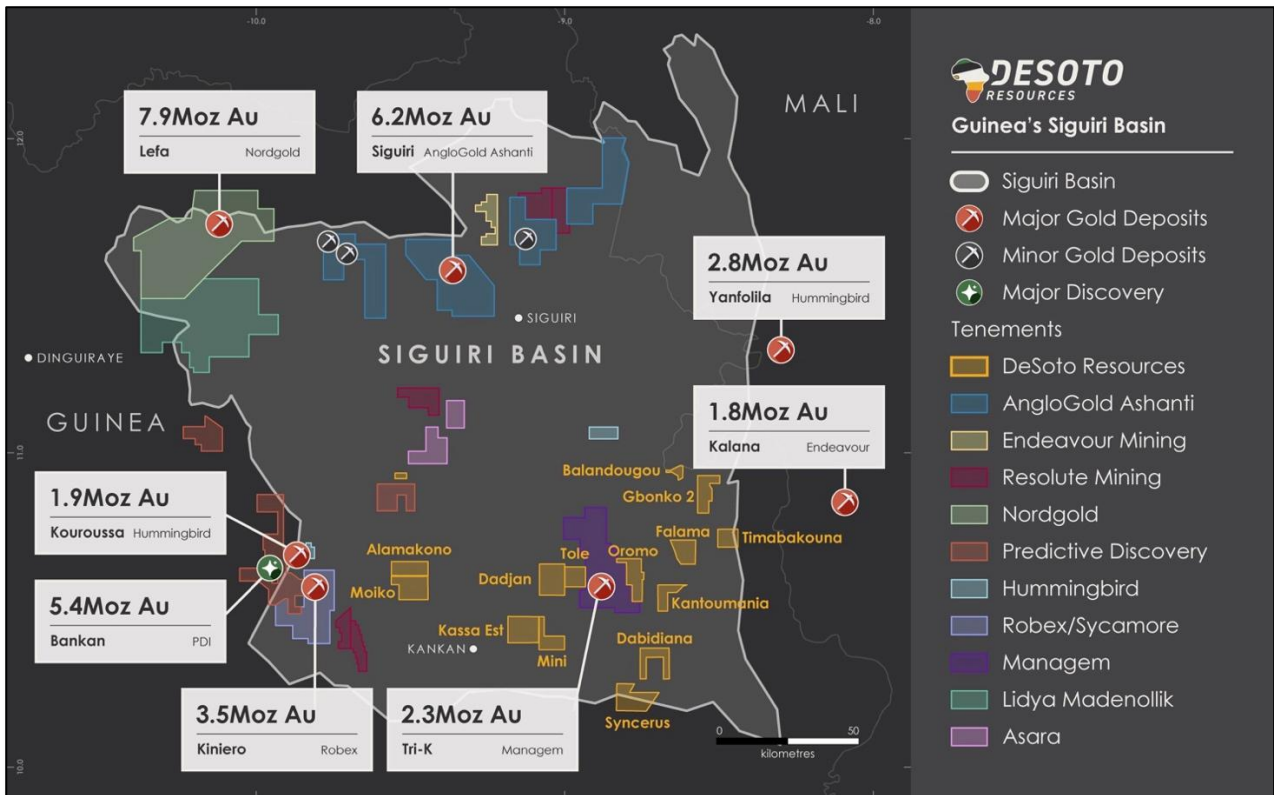


Fig. 2: DeSoto's portfolio of Applications, Reconnaissance and Exploration Authorisations, located in the Siguiiri Basin, Guinea.

Full results and their locations can be found in Tables 1 and 2, with the Company expecting soil sample and trench sample results from Dadjan, and trench sample results from Tole in the coming weeks.

**-END-**

This release is authorised by the Board of Directors of DeSoto Resources Limited.

For further information visit our website at [Desotoresources.com](http://Desotoresources.com) or contact:

Chris Swallow

**Managing Director**

P: +61 412 174 882

E: [cs@desotoresources.com](mailto:cs@desotoresources.com)

<sup>3</sup> DES ASX Announcement: Trenching Results Return High -Grades Ahead of Maiden Drill Programs (4<sup>th</sup> September 2025)

For personal use only



## COMPETENT PERSONS STATEMENT

The information in this report that relates to exploration results is based on and fairly represents information and supporting documentation prepared by Ms Rebecca Morgan. Ms Morgan is a consultant to the company, is a member of the Australian Institute of Geoscientists and has sufficient experience of relevance to the styles of mineralisation and types of deposits under consideration, and to the activities undertaken to qualify as Competent Persons as defined in the 2012 Edition of the Joint Ore Reserves Committee (JORC) Australasian Code for Reporting of Exploration Results, Mineral Resources and Ore Reserves. Ms Morgan consents to the inclusion in this report of the matters based on this information in the form and context in which they appear.

**Table 1. Dadjan Soil Sample Details**

Sample ID	Easting	Northing	RL	Au (ppb)
SS10848	498313	1174003	388	3
SS10849	498270	1174024	390	3
SS10850	498226	1174047	389	1
SS10851	498226	1174047	389	2
SS10852	498180	1174070	388	4
SS10853	498136	1174093	387	4
SS10854	498091	1174114	386	4
SS10855	498046	1174136	386	3
SS10856	498002	1174158	386	3
SS10857	497955	1174181	386	4
SS10858	497910	1174202	386	3
SS10859	497866	1174223	386	4
SS10860	497821	1174247	383	5
SS10861	497777	1174267	417	5
SS10862	497732	1174290	415	5
SS10863	497687	1174312	412	5
SS10864	497641	1174334	408	5
SS10865	497596	1174356	404	4
SS10866	497553	1174379	402	2
SS10867	497509	1174401	398	4
SS10868	497463	1174423	396	4
SS10869	497418	1174444	393	4
SS10870	497374	1174468	392	29
SS10871	497328	1174489	391	6
SS10872	497282	1174511	387	3
SS10873	497237	1174533	389	8
SS10874	497192	1174555	390	4
SS10875	497149	1174576	390	6
SS10876	497104	1174599	390	5
SS10877	497059	1174621	389	4
SS10878	497016	1174644	388	4
SS10879	496970	1174665	389	4
SS10880	497013	1174755	386	8



For personal use only

Sample ID	Easting	Northing	RL	Au (ppb)
SS10881	497057	1174733	385	6
SS10882	497102	1174711	384	5
SS10883	497149	1174689	382	8
SS10884	497192	1174666	382	7
SS10885	497236	1174645	386	5
SS10886	497283	1174623	388	8
SS10887	497327	1174602	389	4
SS10888	497371	1174578	385	3
SS10889	497417	1174557	387	7
SS10890	497461	1174535	388	4
SS10891	497505	1174512	389	5
SS10892	497550	1174491	390	17
SS10893	497594	1174468	392	5
SS10894	497641	1174447	394	3
SS10895	497685	1174424	397	4
SS10896	497733	1174404	398	4
SS10897	497775	1174380	401	5
SS10898	497820	1174358	401	8
SS10899	497866	1174336	396	4
SS10900	497910	1174314	395	4
SS10901	497910	1174314	395	4
SS10902	497955	1174293	396	4
SS10903	498001	1174269	398	5
SS10904	498045	1174247	398	12
SS10905	498090	1174227	401	4
SS10906	498135	1174204	409	5
SS10907	498180	1174181	410	5
SS10908	498223	1174158	407	6
SS10909	498268	1174137	405	5
SS10910	498313	1174115	404	5
SS10911	498360	1174094	404	6
GSS10001	491372	1177210	413	1
GSS10002	491474	1177209	424	2
GSS10003	491576	1177209	440	2
GSS10004	491675	1177210	439	2
GSS10005	491775	1177209	433	10
GSS10006	491876	1177210	422	3
GSS10007	491975	1177210	422	5
GSS10008	492074	1177210	422	0
GSS10009	492175	1177210	426	1
GSS10010	492273	1177209	431	3
GSS10011	492375	1177210	429	4
GSS10012	492475	1177210	436	2
GSS10013	492575	1177210	432	2
GSS10014	493475	1177210	398	6



For personal use only

Sample ID	Easting	Northing	RL	Au (ppb)
GSS10015	493575	1177210	393	9
GSS10016	493676	1177210	391	6
GSS10017	493775	1177209	390	6
GSS10018	493875	1177209	385	4
GSS10019	493986	1177191	382	4
GSS10020	494075	1177210	383	43
GSS10021	494175	1177210	382	7
GSS10022	494275	1177210	393	6
GSS10023	494375	1177211	391	4
GSS10024	494475	1177210	401	6
GSS10025	494575	1177210	404	17
GSS10026	494675	1177210	407	5
GSS10027	494775	1177210	411	5
GSS10028	494875	1177211	413	14
GSS10029	494975	1177210	411	2
GSS10030	495075	1177210	427	7
GSS10031	495175	1177210	452	4
GSS10032	495275	1177210	465	5
GSS10033	493768	1177105	368	1
GSS10034	493676	1177109	369	4
GSS10035	493577	1177110	372	6
GSS10036	493476	1177111	375	6
GSS10037	493375	1177111	378	5
GSS10038	493275	1177110	381	4
GSS10039	493175	1177111	383	4
GSS10040	493076	1177110	385	2
GSS10041	492975	1177110	389	5
GSS10042	492875	1177111	392	3
GSS10043	492775	1177110	396	8
GSS10044	492675	1177110	401	3
GSS10045	492576	1177111	405	3
GSS10046	495375	1177210	462	4
GSS10047	495475	1177210	463	4
GSS10048	495575	1177210	458	4
GSS10049	495675	1177210	444	5
GSS10051	495775	1177210	432	6
GSS10052	495875	1177210	421	5
GSS10053	495975	1177210	423	3
GSS10054	496075	1177210	416	1
GSS10055	496175	1177210	408	1
GSS10056	496275	1177210	409	3
GSS10057	496376	1177210	412	8
GSS10058	493875	1177110	389	7
GSS10059	493972	1177109	385	2
GSS10060	494073	1177117	426	4



For personal use only

Sample ID	Easting	Northing	RL	Au (ppb)
GSS10061	491374	1177010	426	2
GSS10062	491472	1177012	434	3
GSS10063	491569	1177010	455	4
GSS10064	491675	1177010	454	2
GSS10065	491775	1177010	451	6
GSS10066	491875	1177010	442	8
GSS10067	491974	1177010	434	16
GSS10068	492074	1177010	435	5
GSS10069	492175	1177110	429	5
GSS10070	492275	1177110	444	2
GSS10071	492374	1177110	440	4
GSS10072	492475	1177110	437	7
GSS10073	493474	1177010	396	2
GSS10074	493575	1177011	394	2
GSS10075	493674	1177009	394	2
GSS10076	493773	1177010	389	2
GSS10077	493878	1177013	389	7
GSS10078	493974	1177010	384	5
GSS10079	494074	1177009	385	3
GSS10080	494574	1177010	411	4
GSS10081	494474	1177010	399	4
GSS10082	494374	1177009	391	4
GSS10083	494275	1177009	385	3
GSS10084	494173	1177011	381	3
GSS10085	494675	1177009	416	3
GSS10086	494774	1177010	430	3
GSS10087	494875	1177009	430	5
GSS10088	494975	1177010	425	13
GSS10089	495074	1177010	430	9
GSS10090	495170	1177025	449	6
GSS10091	495275	1177009	466	4
GSS10092	495367	1177023	469	4
GSS10093	495474	1177010	471	3
GSS10094	495575	1177010	472	5
GSS10095	495674	1177009	474	4
GSS10096	495775	1177009	457	<b>975</b>
GSS10097	495875	1177009	439	6
GSS10098	495975	1177009	429	10
GSS10099	496075	1177010	418	5
GSS10101	496175	1177009	412	5
GSS10102	496275	1177009	402	4
GSS10103	496375	1177009	402	3
GSS10104	493981	1176911	387	4
GSS10105	493848	1176925	390	11
GSS10106	493774	1176909	389	3



For personal use only

Sample ID	Easting	Northing	RL	Au (ppb)
GSS10107	493675	1176910	392	3
GSS10108	493574	1176910	394	11
GSS10109	493474	1176910	398	3
GSS10110	493375	1176910	400	4
GSS10111	493274	1176910	402	3
GSS10112	493174	1176910	408	3
GSS10113	493074	1176910	414	21
GSS10114	492974	1176909	415	3
GSS10115	492875	1176909	416	6
GSS10116	492775	1176909	421	5
GSS10117	492674	1176910	425	4
GSS10118	492575	1176909	430	3
GSS10119	492474	1176909	436	5
GSS10120	492374	1176910	451	6
GSS10121	492275	1176910	464	4
GSS10122	492175	1176910	458	4
GSS10123	493474	1176809	397	5
GSS10124	493575	1176810	400	5
GSS10125	493675	1176809	399	7
GSS10126	493774	1176810	394	5
GSS10127	493874	1176810	392	5
GSS10128	493980	1176807	384	4
GSS10129	494078	1176813	386	44
GSS10130	494174	1176809	384	10
GSS10131	494275	1176810	388	8
GSS10132	494375	1176810	400	7
GSS10133	494475	1176810	402	9
GSS10134	494575	1176809	396	9
GSS10135	494674	1176810	404	6
GSS10136	494775	1176810	408	4
GSS10137	494874	1176810	419	3
GSS10138	494974	1176810	430	4
GSS10139	495074	1176809	449	3
GSS10140	495175	1176809	457	4
GSS10141	495275	1176809	464	3
GSS10142	495374	1176810	464	2
GSS10143	496375	1176810	407	6
GSS10144	496275	1176810	405	4
GSS10145	496175	1176810	411	4
GSS10146	496074	1176809	420	4
GSS10147	495974	1176809	439	5
GSS10148	495874	1176809	454	7
GSS10149	495775	1176809	465	5
GSS10151	495675	1176809	466	3



For personal use only

Sample ID	Easting	Northing	RL	Au (ppb)
GSS10152	495574	1176810	461	4
GSS10153	495475	1176810	453	7
GSS10154	496375	1176609	403	8
GSS10155	496275	1176609	403	26
GSS10156	496175	1176610	404	10
GSS10157	496074	1176609	415	4
GSS10158	495973	1176607	432	5
GSS10159	495875	1176610	441	12
GSS10160	495775	1176610	436	13
GSS10161	495669	1176613	434	7
GSS10162	495574	1176609	440	7
GSS10163	495475	1176610	436	6
GSS10164	494275	1176610	384	6
GSS10165	494374	1176610	388	9
GSS10166	494475	1176610	394	9
GSS10167	494574	1176610	399	8
GSS10168	494674	1176609	404	10
GSS10169	494767	1176613	403	8
GSS10170	494875	1176609	412	6
GSS10171	494974	1176610	423	9
GSS10172	495074	1176609	428	8
GSS10173	495175	1176610	445	<b>51</b>
GSS10174	495274	1176609	439	14
GSS10175	495374	1176610	435	19
GSS10176	494151	1176604	386	10
GSS10177	494074	1176610	393	8
GSS10178	493977	1176609	395	6
GSS10179	493875	1176610	400	18
GSS10180	493774	1176610	402	5
GSS10181	493674	1176609	407	5
GSS10182	493574	1176609	413	6
GSS10183	493475	1176609	404	5
GSS10184	494175	1176510	388	10
GSS10185	494075	1176509	393	10
GSS10186	493970	1176515	394	8
GSS10187	493875	1176510	397	3
GSS10188	493769	1176507	399	5
GSS10189	493675	1176510	400	5
GSS10190	493575	1176510	410	6
GSS10191	493475	1176510	414	6
GSS10192	494274	1176509	383	11
GSS10193	494374	1176510	387	12
GSS10194	494475	1176510	391	5
GSS10195	494575	1176509	393	9



For personal use only

Sample ID	Easting	Northing	RL	Au (ppb)
GSS10196	494573	1176414	392	8
GSS10197	494675	1176410	396	6
GSS10198	494775	1176409	400	14
GSS10199	494871	1176401	405	7
GSS10201	492678	1170156	403	14
GSS10202	492595	1170210	408	15
GSS10203	492504	1170258	420	16
GSS10204	492426	1170319	425	9
GSS10205	492343	1170366	426	13
GSS10206	492257	1170423	431	18
GSS10207	492172	1170476	420	17
GSS10208	492089	1170530	416	12
GSS10209	492005	1170581	412	16
GSS10210	491914	1170657	424	5
GSS10211	491834	1170689	418	7
GSS10212	491749	1170744	413	3
GSS10213	491665	1170796	410	2
GSS10214	491578	1170855	405	4
GSS10215	491495	1170905	402	6
GSS10216	491413	1170958	402	8
GSS10217	491329	1171012	401	7
GSS10218	491238	1171068	401	13
GSS10219	491156	1171123	392	13
GSS10220	492755	1170101	414	25
GSS10221	493775	1169456	378	6
GSS10222	493692	1169510	384	7
GSS10223	493603	1169566	387	27
GSS10224	493527	1169621	389	24
GSS10225	493437	1169671	396	7
GSS10226	493351	1169725	392	2
GSS10227	493274	1169782	397	1
GSS10228	493185	1169833	397	4
GSS10229	493097	1169887	403	6
GSS10230	493016	1169944	406	2
GSS10231	492928	1169993	411	5
GSS10232	492849	1170046	406	5
GSS10233	493295	1168697	408	1
GSS10234	493206	1168750	406	5
GSS10235	493123	1168804	404	5
GSS10236	493039	1168858	404	2
GSS10237	492955	1168912	404	3
GSS10238	492868	1168967	406	4
GSS10239	492785	1169020	407	8
GSS10240	492702	1169072	410	3



For personal use only

Sample ID	Easting	Northing	RL	Au (ppb)
GSS10241	492618	1169123	411	4
GSS10242	492534	1169180	407	5
GSS10243	492447	1169232	410	4
GSS10244	492362	1169290	412	2
GSS10245	492278	1169340	413	2
GSS10246	492198	1169393	412	7
GSS10247	492111	1169447	411	4
GSS10248	492029	1169500	405	10
GSS10249	491942	1169556	408	4
GSS10251	491854	1169610	401	11
GSS10252	491773	1169660	399	6
GSS10253	491690	1169715	388	5
GSS10254	491606	1169769	398	5
GSS10255	491529	1169811	399	5
GSS10256	491437	1169882	388	4
GSS10257	491352	1169930	390	14
GSS10258	491267	1169984	393	<b>923</b>
GSS10259	491181	1170039	403	77
GSS10260	491101	1170090	398	11
GSS10261	491075	1169870	419	17
GSS10262	491162	1169816	421	16
GSS10263	491240	1169762	409	10
GSS10264	491330	1169704	415	11
GSS10265	491415	1169652	413	8
GSS10266	491497	1169602	411	23
GSS10267	491584	1169548	413	17
GSS10268	493100	1168581	409	6
GSS10269	493186	1168528	413	5
GSS10270	493017	1168635	409	2
GSS10271	492933	1168689	408	6
GSS10272	492847	1168743	410	2
GSS10273	492764	1168796	412	5
GSS10274	492679	1168852	415	6
GSS10275	492591	1168910	417	4
GSS10276	492511	1168956	417	<b>54</b>
GSS10277	492426	1169011	420	13
GSS10278	492339	1169063	421	4
GSS10279	492258	1169117	421	4
GSS10280	492173	1169171	424	5
GSS10281	492091	1169225	422	4
GSS10282	492006	1169279	424	7
GSS10283	491920	1169333	421	6
GSS10284	491837	1169386	415	5
GSS10285	491750	1169440	410	6



For personal use only

Sample ID	Easting	Northing	RL	Au (ppb)
GSS10286	491666	1169491	411	5
GSS10287	493075	1168358	407	3
GSS10288	492992	1168412	408	2
GSS10289	492908	1168465	409	8
GSS10290	492821	1168518	408	4
GSS10291	492740	1168575	409	2
GSS10292	492656	1168629	413	2
GSS10293	492574	1168679	415	<b>50</b>
GSS10294	492484	1168735	415	15
GSS10295	492397	1168783	418	10
GSS10296	492319	1168842	418	7
GSS10297	492232	1168896	417	8
GSS10298	492150	1168949	421	6
GSS10300	492064	1169003	430	<b>51</b>
GSS10301	491982	1169056	429	6
GSS10302	491895	1169111	425	3
GSS10303	491806	1169169	430	6
GSS10304	491728	1169217	416	3
GSS10305	491642	1169270	410	2
GSS10306	491555	1169324	411	4
GSS10307	490716	1169860	391	11
GSS10308	490799	1169806	396	<b>294</b>
GSS10309	490880	1169757	396	45
GSS10310	490967	1169705	398	37
GSS10311	491052	1169645	397	11
GSS10312	491137	1169593	408	4
GSS10313	491221	1169539	402	3
GSS10314	491306	1169466	401	4
GSS10315	491389	1169434	408	5
GSS10316	491477	1169379	417	3
GSS10317	493800	1169678	391	12
GSS10318	493715	1169732	389	8
GSS10319	493631	1169786	388	6
GSS10320	493545	1169841	386	3
GSS10321	493458	1169894	387	2
GSS10322	493376	1169947	388	2
GSS10323	493291	1170004	390	6
GSS10324	493207	1170054	391	3
GSS10325	493122	1170109	392	4
GSS10326	493037	1170164	396	6
GSS10327	492951	1170218	400	18
GSS10328	492863	1170261	407	42
GSS10329	492786	1170330	413	23
GSS10330	492701	1170378	413	6



For personal use only

Sample ID	Easting	Northing	RL	Au (ppb)
GSS10331	492615	1170428	420	10
GSS10332	492533	1170484	434	11
GSS10333	494974	1176409	420	2
GSS10334	495075	1176409	425	5
GSS10335	495174	1176409	430	3
GSS10336	495275	1176410	422	18
GSS10337	495374	1176410	422	6
GSS10338	495474	1176410	423	4
GSS10339	495575	1176409	421	2
GSS10340	495674	1176410	422	2
GSS10341	495775	1176410	419	3
GSS10342	495875	1176409	420	15
GSS10343	495975	1176409	416	27
GSS10344	496075	1176409	422	2
GSS10345	496174	1176410	410	5
GSS10346	496274	1176410	405	2
GSS10347	496374	1176409	405	2
GSS10348	493475	1176410	425	1
GSS10349	493474	1176309	429	2
GSS10351	493575	1176310	418	2
GSS10352	493674	1176309	414	2
GSS10353	493774	1176309	410	1
GSS10354	494275	1176310	385	5
GSS10355	494175	1176310	388	3
GSS10356	494075	1176309	395	2
GSS10357	493975	1176310	397	2
GSS10358	493875	1176309	396	2
GSS10359	494375	1176310	388	7
GSS10360	494474	1176310	390	2
GSS10361	494574	1176309	392	2
GSS10362	494675	1176309	398	3
GSS10363	494775	1176309	401	1
GSS10364	494875	1176310	408	2
GSS10365	494974	1176309	410	4
GSS10366	495075	1176309	416	3
GSS10367	495174	1176309	423	6
GSS10368	495275	1176309	416	4
GSS10369	495375	1176310	417	3
GSS10370	495474	1176309	418	5
GSS10371	495575	1176309	417	1
GSS10372	495674	1176309	412	1
GSS10373	495775	1176309	413	1
GSS10374	495875	1176309	414	4
GSS10375	495975	1176309	414	5



For personal use only

Sample ID	Easting	Northing	RL	Au (ppb)
GSS10376	496075	1176310	407	9
GSS10377	496175	1176309	403	4
GSS10378	496274	1176309	399	3
GSS10379	496374	1176310	395	3
GSS10380	494375	1176210	384	4
GSS10381	494275	1176210	387	3
GSS10382	494174	1176209	389	4
GSS10383	494075	1176210	397	2
GSS10384	493974	1176209	401	1
GSS10385	493874	1176210	399	4
GSS10386	493774	1176209	402	3
GSS10387	493674	1176209	405	6
GSS10388	493574	1176209	411	3
GSS10389	493474	1176210	417	5
GSS10390	494474	1176209	387	5
GSS10391	494575	1176210	388	3
GSS10392	494674	1176110	387	2
GSS10393	494774	1176110	391	<b>80</b>
GSS10394	494875	1176110	391	4
GSS10395	494980	1176111	399	23
GSS10396	495074	1176109	402	4
GSS10397	495175	1176109	402	6
GSS10398	495274	1176109	406	3
GSS10399	495374	1176110	408	2
GSS10401	495474	1176110	409	1
GSS10402	495575	1176110	407	3
GSS10403	495671	1176111	406	2
GSS10404	495774	1176110	407	6
GSS10405	495875	1176110	410	3
GSS10406	495974	1176110	403	2
GSS10407	496075	1176109	399	4
GSS10408	496174	1176110	396	5
GSS10409	496275	1176110	395	3
GSS10410	496375	1176109	395	3
GSS10411	494474	1176010	391	5
GSS10412	494575	1176009	386	4
GSS10413	494774	1175910	390	3
GSS10414	494875	1175909	393	6
GSS10415	494975	1175909	392	1
GSS10416	495074	1175909	396	5
GSS10417	495175	1175910	396	7
GSS10418	495275	1175909	393	4
GSS10419	495374	1175909	394	12
GSS10420	495475	1175910	397	5



For personal use only

Sample ID	Easting	Northing	RL	Au (ppb)
GSS10421	495574	1175910	400	2
GSS10422	495672	1175907	400	2
GSS10423	495774	1175910	392	3
GSS10424	495875	1175909	396	2
GSS10425	495975	1175909	393	2
GSS10426	496074	1175910	393	3
GSS10427	496175	1175909	392	4
GSS10428	496274	1175909	391	2
GSS10429	496374	1175910	394	2
GSS10430	494375	1176009	388	5
GSS10431	494274	1176010	387	5
GSS10432	494175	1176010	388	3
GSS10433	494074	1176009	393	3
GSS10434	493974	1176010	394	2
GSS10435	493875	1176010	401	2
GSS10436	493775	1176010	405	2
GSS10437	493675	1176010	412	2
GSS10438	493575	1176010	417	2
GSS10439	493475	1176010	419	3
GSS10440	494474	1175809	377	6
GSS10441	494374	1175809	391	2
GSS10442	494274	1175810	393	3
GSS10443	494174	1175809	396	3
GSS10444	494074	1175809	394	3
GSS10445	493974	1175809	403	4
GSS10446	493874	1175809	409	2
GSS10447	493775	1175809	411	5
GSS10448	493675	1175810	431	2
GSS10449	493575	1175810	429	2
GSS10451	493475	1175810	415	4
GSS10452	494274	1175709	403	3
GSS10453	494174	1175710	400	2
GSS10454	494075	1175709	398	2
GSS10455	493974	1175710	401	4
GSS10456	493874	1175710	408	3
GSS10457	493774	1175709	407	2
GSS10458	493675	1175710	417	3
GSS10459	493575	1175709	419	7
GSS10460	493474	1175709	408	2
GSS10461	493882	1169626	385	3
GSS10462	492449	1170536	444	5
GSS10463	492364	1170591	451	6
GSS10464	492279	1170644	449	6
GSS10465	492192	1170697	436	4



For personal use only

Sample ID	Easting	Northing	RL	Au (ppb)
GSS10466	492110	1170751	427	3
GSS10467	492003	1170778	400	5
GSS10468	491943	1170856	415	2
GSS10469	491857	1170913	414	2
GSS10470	491773	1170966	409	5
GSS10471	491688	1171020	403	5
GSS10472	491603	1171072	399	2
GSS10473	491520	1171127	395	2
GSS10474	491437	1171182	389	3
GSS10475	491351	1171235	392	2
GSS10476	491265	1171288	389	4
GSS10477	494098	1169963	404	<b>65</b>
GSS10479	494011	1170015	409	14
GSS10480	493926	1170071	409	4
GSS10481	493845	1170123	400	5
GSS10482	493755	1170176	400	5
GSS10483	493676	1170231	386	3
GSS10484	493591	1170285	383	9
GSS10485	493506	1170339	384	25
GSS10486	493425	1170393	388	12
GSS10487	493337	1170447	391	8
GSS10488	493256	1170500	394	8
GSS10489	493170	1170552	399	4
GSS10490	493081	1170608	406	9
GSS10491	493001	1170660	421	18
GSS10492	492915	1170714	423	16
GSS10493	492831	1170769	416	14
GSS10494	492746	1170821	425	4
GSS10495	492662	1170875	428	3
GSS10496	492578	1170928	437	3
GSS10497	492495	1170979	440	3
GSS10498	492408	1171038	434	6
GSS10499	492326	1171088	425	28
GSS10500	492239	1171144	419	8
GSS10501	492156	1171195	448	15
GSS10502	492070	1171251	455	12
GSS10503	493193	1172079	385	3
GSS10504	493104	1172131	386	3
GSS10505	493023	1172190	392	2
GSS10506	492933	1172245	399	2
GSS10507	492853	1172296	407	2
GSS10508	492771	1172348	415	4
GSS10509	492687	1172405	427	2
GSS10510	492599	1172457	440	3



For personal use only

Sample ID	Easting	Northing	RL	Au (ppb)
GSS10511	492518	1172507	452	1
GSS10512	492433	1172564	456	3
GSS10513	492347	1172618	446	2
GSS10514	492262	1172670	428	2
GSS10515	492177	1172726	427	8
GSS10516	492094	1172774	450	4
GSS10517	492010	1172831	430	3
GSS10518	491924	1172885	446	4
GSS10519	491837	1172937	434	5
GSS10520	491755	1172992	429	3
GSS10521	491672	1173042	414	2
GSS10522	491508	1173142	403	2
GSS10523	493771	1172427	384	4
GSS10524	493682	1172480	384	4
GSS10525	493596	1172532	389	5
GSS10526	493510	1172585	393	3
GSS10527	493428	1172638	398	6
GSS10529	493343	1172693	406	4
GSS10530	493258	1172747	414	3
GSS10531	493175	1172800	413	4
GSS10532	493090	1172857	418	12
GSS10533	493005	1172905	428	6
GSS10534	492919	1172964	425	25
GSS10535	492836	1173016	422	4
GSS10536	492751	1173069	420	4
GSS10537	492670	1173121	418	1
GSS10538	492584	1173175	414	3
GSS10539	492501	1173226	405	2
GSS10540	492416	1173285	411	1
GSS10541	492330	1173334	409	5
GSS10542	492246	1173389	404	3
GSS10543	492162	1173444	399	3
GSS10544	492077	1173498	397	3
GSS10545	491989	1171302	431	7
GSS10546	491902	1171357	412	16
GSS10547	491819	1171410	414	15
GSS10548	491733	1171463	412	6
GSS10549	491650	1171518	401	5
GSS10550	494033	1172847	400.00	9
GSS10551	494374	1175709	402.00	3
GSS10552	494474	1175710	394.00	16
GSS10553	494574	1175710	388.00	6
GSS10554	494675	1175710	382.00	7
GSS10555	494774	1175710	388.00	6



For personal use only

Sample ID	Easting	Northing	RL	Au (ppb)
GSS10556	494875	1175709	387.00	6
GSS10557	494975	1175710	391	7
GSS10558	495075	1175710	390	4
GSS10559	495174	1175708	388	3
GSS10560	495274	1175709	388	4
GSS10561	495375	1175710	385	4
GSS10562	495475	1175710	391	11
GSS10563	495574	1175709	393	3
GSS10564	495674	1175710	393	3
GSS10565	495775	1175709	395	4
GSS10566	495875	1175710	397	42
GSS10567	495975	1175709	399	6
GSS10568	496075	1175709	393	1
GSS10569	496174	1175709	395	4
GSS10570	496274	1175710	398	<b>254</b>
GSS10571	496374	1175709	398	7
GSS10572	494975	1175509	388	4
GSS10573	494875	1175509	397	13
GSS10574	494775	1175509	390	<b>122</b>
GSS10575	494675	1175509	392	26
GSS10576	494574	1175509	390	6
GSS10577	494474	1175509	386	4
GSS10578	494374	1175510	393	3
GSS10579	494274	1175509	395	4
GSS10580	494175	1175509	400	7
GSS10581	494075	1175510	397	4
GSS10582	493975	1175510	412	3
GSS10583	493875	1175510	406	3
GSS10584	493775	1175510	404	3
GSS10585	493675	1175510	407	3
GSS10586	493575	1175510	406	2
GSS10587	493475	1175510	400	2
GSS10588	496375	1175510	394	5
GSS10589	496275	1175510	389	3
GSS10590	496175	1175510	391	0
GSS10591	495175	1175510	393	3
GSS10592	495075	1175510	388	4
GSS10593	495275	1175510	394	5
GSS10594	495375	1175510	394	8
GSS10595	495475	1175510	392	8
GSS10596	495575	1175510	391	4
GSS10597	495675	1175510	395	4
GSS10598	495775	1175510	393	36
GSS10599	495875	1175510	395	8



For personal use only

Sample ID	Easting	Northing	RL	Au (ppb)
GSS10600	495875	1175510	395	5
GSS10601	495975	1175510	393	4
GSS10602	496072	1175504	391	2
GSS10603	493875	1175310	397	3
GSS10604	493775	1175310	397	3
GSS10605	493675	1175310	403	3
GSS10606	493575	1175310	397	4
GSS10607	493475	1175310	399	6
GSS10608	493975	1175310	392	5
GSS10609	494075	1175310	389	5
GSS10610	494175	1175310	385	3
GSS10611	494275	1175310	386	6
GSS10612	494375	1175310	388	3
GSS10613	494475	1175310	392	4
GSS10614	494575	1175310	394	3
GSS10615	494675	1175310	399	4
GSS10616	494775	1175310	399	4
GSS10617	494875	1175310	397	5
GSS10618	494975	1175310	394	3
GSS10619	495075	1175310	389	4
GSS10620	495175	1175310	392	3
GSS10621	495275	1175310	394	5
GSS10622	493025	1177210	418	5
GSS10623	493075	1177210	416	1
GSS10624	493125	1177210	412	7
GSS10625	493175	1177210	408	2
GSS10626	493225	1177210	406	4
GSS10627	493275	1177210	405	8
GSS10628	493325	1177210	404	4
GSS10629	493375	1177210	399	6
GSS10630	493425	1177210	400	7
GSS10631	492975	1177210	413	4
GSS10632	492925	1177210	414	2
GSS10633	492875	1177210	415	14
GSS10634	492825	1177210	417	3
GSS10635	492775	1177210	421	3
GSS10636	492725	1177210	422	2
GSS10637	492675	1177210	426	3
GSS10638	492625	1177210	423	16
GSS10639	492525	1177210	429	7
GSS10640	492425	1177210	441	4
GSS10641	492325	1177210	430	4
GSS10642	492225	1177210	421	5
GSS10643	492125	1177210	423	6



For personal use only

Sample ID	Easting	Northing	RL	Au (ppb)
GSS10644	492025	1177210	419	4
GSS10645	491925	1177210	420	2
GSS10646	491825	1177210	425	2
GSS10647	491725	1177210	435	2
GSS10648	491625	1177210	442	2
GSS10649	491525	1177210	445	2
GSS10650	491525	1177210	445	4
GSS10651	491425	1177210	427	2
GSS10652	491325	1177210	422	7
GSS10653	491275	1177210	426	4
GSS10654	491225	1177210	420	2
GSS10655	491175	1177210	424	3
GSS10656	491125	1177210	424	15
GSS10657	491075	1177210	424	48
GSS10658	493025	1177109	412	1
GSS10659	493074	1177110	409	1
GSS10660	493124	1177109	408	2
GSS10661	493175	1177109	407	9
GSS10662	493224	1177109	404	11
GSS10663	493425	1177010	389	2
GSS10664	493374	1177009	392	1
GSS10665	493325	1177009	393	2
GSS10666	493276	1177009	395	1
GSS10667	493225	1177007	398	1
GSS10668	493173	1177010	400	3
GSS10669	493122	1177010	402	4
GSS10670	493075	1177012	404	2
GSS10671	493023	1177011	406	1
GSS10672	492974	1177009	411	4
GSS10673	492926	1177008	413	4
GSS10674	492876	1177009	415	2
GSS10675	492823	1177009	417	3
GSS10676	492773	1177009	419	1
GSS10677	492724	1177011	421	0
GSS10678	492675	1177008	423	3
GSS10679	492623	1177007	424	2
GSS10680	492573	1177008	426	1
GSS10681	492524	1177010	430	4
GSS10682	492475	1177009	434	2
GSS10683	492427	1177010	437	4
GSS10684	492375	1177011	445	3
GSS10685	492324	1177010	456	3
GSS10686	492276	1177010	460	2
GSS10687	492223	1177008	454	3



For personal use only

Sample ID	Easting	Northing	RL	Au (ppb)
GSS10688	492174	1177008	449	2
GSS10689	492129	1177010	445	3
GSS10690	492024	1177012	438	8
GSS10691	491927	1177009	436	4
GSS10692	491826	1177015	436	11
GSS10693	491725	1177009	448	1
GSS10694	491626	1177009	451	4
GSS10695	491576	1177010	454	1
GSS10696	491530	1177013	446	7
GSS10697	491428	1177013	427	19
GSS10698	491324	1177011	422	8
GSS10699	491274	1177008	422	27
GSS10700	491274	1177008	422	3
GSS10701	491227	1177012	419	3
GSS10702	491172	1177011	418	8
GSS10703	491122	1177010	417	2
GSS10704	491076	1177010	417	4
GSS10705	493425	1176910	360	1
GSS10706	493325	1176909	371	1
GSS10707	493226	1176909	378	1
GSS10708	493124	1176909	383	1
GSS10709	493024	1176910	389	2
GSS10710	492924	1176910	396	2
GSS10711	492826	1176910	402	4
GSS10712	492727	1176907	408	4
GSS10713	492625	1176912	414	2
GSS10714	492523	1176907	421	3
GSS10715	492421	1176907	435	2
GSS10716	492328	1176907	458	3
GSS10717	492225	1176909	455	2
GSS10718	492125	1176910	446	2
GSS10719	492070	1176912	448	2
GSS10720	492023	1176913	445	2
GSS10721	491974	1176910	444	3
GSS10722	491923	1176910	444	3
GSS10723	491876	1176910	444	12
GSS10724	491823	1176909	446	14
GSS10725	491774	1176909	449	6
GSS10726	493275	1177109	403	27
GSS10727	493324	1177110	399	6
GSS10728	493424	1177109	396	6
GSS10729	492925	1177109	409	2
GSS10730	492825	1177110	414	3
GSS10731	492724	1177109	420	3



For personal use only

Sample ID	Easting	Northing	RL	Au (ppb)
GSS10732	492625	1177109	425	1
GSS10733	492525	1177110	427	47
GSS10734	492425	1177109	433	3
GSS10735	492325	1177110	437	3
GSS10736	492225	1177109	436	2
GSS10737	492124	1177109	433	2
GSS10738	492075	1177109	428	4
GSS10739	492025	1177110	423	6
GSS10740	491974	1177109	423	4
GSS10741	491925	1177109	425	8
GSS10742	491875	1177110	428	17
GSS10743	491824	1177110	434	6
GSS10744	491774	1177109	444	3
GSS10745	491724	1177110	445	2
GSS10746	491675	1177109	448	3
GSS10747	491625	1177109	451	8
GSS10748	491574	1177110	455	4
GSS10749	491525	1177109	451	3
GSS10750	491525	1177109	451	<b>87</b>
GSS10751	493951	1172901	397	6
GSS10752	493864	1172956	397	4
GSS10753	493779	1173010	402	<b>75</b>
GSS10754	493696	1173061	406	4
GSS10755	493613	1173115	411	7
GSS10756	493527	1173169	419	6
GSS10757	493439	1173222	426	5
GSS10758	493362	1173275	423	0
GSS10759	493274	1173332	430	2
GSS10760	493188	1173385	425	3
GSS10761	493107	1173439	423	5
GSS10762	493022	1173491	419	4
GSS10763	492936	1173545	415	3
GSS10764	492852	1173600	412	3
GSS10765	492765	1173652	406	3
GSS10766	492682	1173704	402	9
GSS10767	492599	1173756	400	6
GSS10768	492514	1173815	399	10
GSS10769	492430	1173864	398	10
GSS10770	493140	1174241	380	2
GSS10771	493227	1174192	391	2
GSS10772	493309	1174136	411	2
GSS10773	493396	1174079	418	6
GSS10774	493482	1174028	420	6
GSS10775	493566	1173976	424	3



For personal use only

Sample ID	Easting	Northing	RL	Au (ppb)
GSS10776	493653	1173920	426	8
GSS10777	493733	1173869	429	3
GSS10778	493733	1173869	429	3
GSS10779	493824	1173813	438	8
GSS10780	493901	1173761	445	4
GSS10781	493989	1173706	436	1
GSS10782	494064	1173650	432	5
GSS10783	494154	1173598	427	3
GSS10784	494240	1173547	424	3
GSS10785	494323	1173491	421	3
GSS10786	494406	1173441	423	3
GSS10787	494677	1173862	417	2
GSS10788	494592	1173915	423	4
GSS10789	494509	1173967	442	4
GSS10790	494425	1174021	458	3
GSS10791	494338	1174074	462	3
GSS10792	494255	1174127	461	3
GSS10793	494171	1174184	451	4
GSS10794	494087	1174233	443	4
GSS10795	493411	1174662	383	12
GSS10796	493492	1174608	389	9
GSS10797	493578	1174557	395	2
GSS10798	493665	1174503	399	6
GSS10799	493749	1174449	410	3
GSS10800	493833	1174396	418	5
GSS10801	493918	1174341	416	4
GSS10802	494001	1174290	418	5
GSS10803	493680	1175089	383	7
GSS10804	493770	1175026	381	5
GSS10805	493846	1174980	384	4
GSS10806	493930	1174923	393	4
GSS10807	494017	1174872	402	4
GSS10808	494103	1174816	407	2
GSS10809	494187	1174764	416	2
GSS10810	494270	1174709	425	2
GSS10811	494351	1174658	435	3
GSS10812	494440	1174596	444	6
GSS10813	494523	1174550	454	5
GSS10814	494603	1174497	459	2
GSS10815	494692	1174444	452	3
GSS10816	494774	1174390	438	4
GSS10817	494859	1174337	416	6
GSS10818	494942	1174280	409	4
SS31316	502379	1170813	418	5



For personal use only

Sample ID	Easting	Northing	RL	Au (ppb)
SS31317	502428	1170812	419	5
SS31318	502479	1170812	418	6
SS31319	502529	1170812	418	4
SS31320	502579	1170812	416	4
SS31321	502628	1170812	416	4
SS31322	502676	1170812	415	4
SS31323	502728	1170812	415	3
SS31324	502777	1170812	414	3
SS31325	502828	1170811	414	2
SS31326	502878	1170812	415	2
SS31327	502928	1170810	416	3
SS31328	502977	1170811	416	4
SS31329	503028	1170813	417	7
SS31330	503079	1170812	418	5
SS31331	503128	1170812	417	3
SS31332	503178	1170813	416	2
SS31333	503228	1170812	415	2
SS31334	503278	1170812	414	2
SS31335	503327	1170812	413	2
SS31336	503378	1170812	414	3
SS31337	503428	1170811	414	4
SS31338	503478	1170812	415	4
SS31339	503529	1170812	416	3
SS31340	503578	1170812	415	4
SS31341	503628	1170812	415	9
SS31342	503678	1170812	413	4
SS31343	503728	1170812	411	2
SS31344	503778	1170811	410	2
SS31345	503828	1170812	408	2
SS31346	503878	1170812	408	2
SS31347	503928	1170812	407	2
SS31348	503978	1170812	408	1
SS31349	505628	1170812	400	21
SS31350	505578	1170812	405	34
SS31351	505578	1170812	405	41
SS31352	505528	1170812	403	29
SS31353	505478	1170812	405	7
SS31354	505428	1170812	404	11
SS31355	505378	1170812	403	17
SS31356	505328	1170812	403	17
SS31357	505278	1170812	404	13
SS31358	505228	1170812	406	14
SS31359	505178	1170812	407	8
SS31360	505128	1170812	406	7



For personal use only

Sample ID	Easting	Northing	RL	Au (ppb)
SS31361	505078	1170812	407	13
SS31362	505028	1170812	407	6
SS31363	504978	1170812	406	5
SS31364	504928	1170812	406	6
SS31365	504878	1170812	409	5
SS31366	504828	1170812	407	3
SS31367	504778	1170812	410	4
SS31368	504728	1170812	408	3
SS31369	504678	1170812	410	3
SS31370	504628	1170812	412	5
SS31371	504578	1170812	414	2
SS31372	504528	1170812	416	3
SS31373	504478	1170812	419	10
SS31374	504428	1170811	419	6
SS31375	504378	1170812	421	3
SS31376	504328	1170812	421	2
SS31377	504278	1170812	423	1
SS31378	504228	1170812	425	15
SS31379	504178	1170812	427	3
SS31380	504128	1170812	428	8
SS31381	504078	1170812	429	4
SS31382	504028	1170812	430	2
SS31383	503128	1170012	409	6
SS31384	503078	1170013	410	4
SS31385	503028	1170012	409	4
SS31386	502979	1170014	411	5
SS31387	502928	1170012	411	2
SS31388	502878	1170012	410	2
SS31389	502828	1170012	411	3
SS31390	502778	1170012	412	5
SS31391	502728	1170012	412	7
SS31392	502678	1170012	412	5
SS31393	502628	1170012	410	7
SS31394	502528	1170011	410	6
SS31395	502472	1170009	409	5
SS31396	502428	1170011	408	6
SS31397	502378	1170012	408	7
SS31398	502379	1169913	410	4
SS31399	502428	1169912	407	7
SS31400	502478	1169912	404	4
SS31401	502478	1169912	404	3
SS31402	502522	1169912	405	4
SS31403	502578	1169912	404	6
SS31404	502628	1169912	406	20



For personal use only

Sample ID	Easting	Northing	RL	Au (ppb)
SS31405	502678	1169915	407	13
SS31406	502728	1169912	408	4
SS31407	502778	1169912	410	4
SS31408	502828	1169912	411	4
SS31409	502878	1169912	411	16
SS31410	502928	1169912	413	2
SS31411	503178	1170113	414	7
SS31412	503128	1170112	416	4
SS31413	503078	1170112	419	12
SS31414	503028	1170112	421	4
SS31415	502978	1170112	421	4
SS31416	502928	1170112	418	5
SS31417	503128	1170211	414	<b>65</b>
SS31418	503076	1170213	414	4
SS31419	503030	1170213	414	16
SS31420	502979	1170212	414	5
SS31421	502928	1170212	415	8
SS31422	502878	1170212	415	3
SS31423	502828	1170212	417	24
SS31424	502779	1170211	417	3
SS31425	502727	1170213	415	3
SS31426	502679	1170212	414	2
SS31427	502627	1170213	412	3
SS31428	502578	1170212	411	3
SS31429	502528	1170211	410	2
SS31430	502477	1170212	409	3
SS31431	502429	1170214	409	2
SS31432	502377	1170213	410	4
SS31433	502377	1169712	409	3
SS31434	502428	1169712	407	4
SS31435	502479	1169711	403	4
SS31436	502528	1169712	402	5
SS31437	502578	1169712	402	5
SS31438	502629	1169712	401	7
SS31439	502678	1169712	400	11
SS31440	502730	1169712	400	5
SS31441	502778	1169712	400	3
SS31442	502827	1169713	399	9
SS31443	502830	1169810	394	25
SS31444	502779	1169812	392	12
SS31445	502729	1169811	391	27
SS31446	502680	1169812	393	5
SS31447	502630	1169811	395	2
SS31448	502577	1169812	396	3



For personal use only

Sample ID	Easting	Northing	RL	Au (ppb)
SS31449	502528	1169812	394	2
SS31450	502477	1169812	394	3
SS31451	502477	1169812	394	2
SS31452	502427	1169812	396	2
SS31453	502378	1169812	397	3
SS31454	503078	1170312	405	1
SS31455	503028	1170312	405	2
SS31456	502979	1170312	406	4
SS31457	502927	1170312	406	3
SS31458	502877	1170312	407	7
SS31459	502829	1170312	408	3
SS31460	502776	1170312	406	5
SS31461	502727	1170311	405	3
SS31462	502679	1170313	403	2
SS31463	502628	1170312	404	4
SS31464	502577	1170312	404	3
SS31465	502528	1170312	405	3
SS31466	502478	1170310	406	3
SS31467	502427	1170313	407	2
SS31468	502378	1170311	407	4
SS31469	502878	1170112	418	6
SS31470	502828	1170112	415	3
SS31471	502778	1170112	413	2
SS31472	502729	1170115	413	4
SS31473	502678	1170112	415	2
SS31474	502628	1170112	414	4
SS31475	502579	1170112	413	5
SS31476	502528	1170112	413	5
SS31477	502478	1170112	411	4
SS31478	502428	1170112	410	4
SS31479	502378	1170112	410	5
SS31480	501476	1171212	426	2
SS31481	501528	1171212	425	4
SS31482	501578	1171212	424	4
SS31483	501628	1171212	425	4
SS31484	501678	1171212	429	5
SS31485	501728	1171212	427	3
SS31486	501774	1171212	432	2
SS31487	501828	1171212	432	4
SS31488	501878	1171212	434	2
SS31489	501877	1171313	438	10
SS31490	501828	1171312	433	3
SS31491	501778	1171312	432	2
SS31492	501728	1171312	432	2



For personal use only

Sample ID	Easting	Northing	RL	Au (ppb)
SS31493	501678	1171312	430	2
SS31494	501628	1171312	429	<b>157</b>
SS31495	501578	1171312	427	5
SS31496	501528	1171312	426	3
SS31497	501478	1171312	426	2
SS31498	501478	1171412	428	2
SS31499	501528	1171412	429	4
SS31500	501578	1171412	431	4
SS31501	501578	1171412	431	3
SS31502	501628	1171412	429	3
SS31503	501678	1171412	433	2
SS31504	501728	1171412	434	10
SS31505	501779	1171409	440	4
SS31506	501828	1171412	440	3
SS31507	501878	1171412	443	12
SS31508	501427	1171511	402	1
SS31509	501478	1171512	404	2
SS31510	501528	1171511	406	4
SS31511	501579	1171511	407	3
SS31512	501628	1171512	408	4
SS31513	501679	1171513	408	7
SS31514	501728	1171512	410	8
SS31515	501779	1171512	411	2
SS31516	501829	1171514	413	6
SS31517	501828	1171611	415	7
SS31518	501778	1171612	413	6
SS31519	501728	1171612	411	7
SS31520	501678	1171612	409	8
SS31521	501628	1171612	407	13
SS31522	501578	1171612	404	8
SS31523	501527	1171612	401	4
SS31524	501478	1171612	399	6
SS31525	501428	1171612	397	5
SS31526	501428	1171711	401	4
SS31527	501478	1171711	402	4
SS31528	501527	1171712	402	3
SS31529	501577	1171712	404	5
SS31530	501628	1171712	406	9
SS31531	501678	1171712	408	5
SS31532	501728	1171712	410	3
SS31533	501778	1171712	411	2
SS31534	501828	1171712	413	14
SS31535	501828	1171812	441	12
SS31536	501778	1171812	439	9



For personal use only

Sample ID	Easting	Northing	RL	Au (ppb)
SS31537	501729	1171812	438	2
SS31538	501678	1171812	435	2
SS31539	501628	1171812	433	5
SS31540	501578	1171812	432	2
SS31541	501528	1171812	431	2
SS31542	501478	1171812	429	2
SS31543	501427	1171812	430	6
SS31544	501428	1171912	430	12
SS31545	501478	1171912	435	1
SS31546	501528	1171912	435	2
SS31547	501578	1171912	437	2
SS31548	501628	1171912	439	4
SS31549	501678	1171912	439	5
SS31550	501728	1171913	441	2
SS31551	501728	1171913	441	4
SS31552	501778	1171913	442	15
SS31553	501829	1171912	443	4
SS31554	501828	1172012	448	5
SS31555	501778	1172012	447	6
SS31556	501728	1172012	446	6
SS31557	501678	1172012	444	5
SS31558	501628	1172012	443	7
SS31559	501578	1172012	442	4
SS31560	501528	1172012	441	4
SS31561	501478	1172012	439	6
SS31562	501428	1172012	438	3
SS31563	501828	1172111	430	3
SS31564	501778	1172112	430	3
SS31565	501728	1172112	428	5
SS31566	501679	1172112	424	3
SS31567	501628	1172112	421	4
SS31568	501579	1172112	418	3
SS31569	501528	1172112	416	4
SS31570	501478	1172112	415	3
SS31571	501428	1172112	413	3
SS31572	501378	1172212	413	2
SS31573	501428	1172211	415	2
SS31574	501478	1172211	417	3
SS31575	501528	1172212	419	4
SS31576	501578	1172212	418	3
SS31577	501629	1172211	426	3
SS31578	501677	1172212	431	6
SS31579	501729	1172213	436	2
SS31580	501778	1172211	438	5



For personal use only

Sample ID	Easting	Northing	RL	Au (ppb)
SS31581	501829	1172213	434	5
SS31582	501828	1172310	426	3
SS31583	501778	1172313	429	3
SS31584	501728	1172311	433	3
SS31585	501677	1172312	433	2
SS31586	501627	1172312	431	3
SS31587	501578	1172312	426	2
SS31588	501527	1172312	422	1
SS31589	501477	1172312	420	3
SS31590	501429	1172313	417	2
SS31591	501378	1172312	414	1
SS31592	501778	1172612	470	9
SS31593	501728	1172612	475	4
SS31594	501679	1172612	481	3
SS31595	501628	1172612	481	1
SS31596	501578	1172612	478	2
SS31597	501528	1172612	465	3
SS31598	501478	1172612	458	1
SS31599	501428	1172612	455	3
SS31600	501378	1172612	454	3
SS31601	501378	1172612	454	3
SS31602	501378	1172512	445	1
SS31603	501428	1172512	453	2
SS31604	501478	1172512	453	2
SS31605	501528	1172512	458	2
SS31606	501578	1172512	468	2
SS31607	501628	1172512	477	2
SS31608	501678	1172512	475	4
SS31609	501728	1172512	467	3
SS31610	501778	1172512	460	4
SS31611	501778	1172412	455	9
SS31612	501728	1172412	459	2
SS31613	501678	1172412	466	2
SS31614	501628	1172412	464	2
SS31615	501578	1172412	454	1
SS31616	501528	1172412	449	3
SS31617	501478	1172412	443	2
SS31618	501428	1172412	441	2
SS31619	501378	1172412	439	2
SS31620	501779	1172913	415	6
SS31621	501727	1172912	416	3
SS31622	501677	1172912	417	2
SS31623	501629	1172912	417	<b>404</b>
SS31624	501577	1172912	417	33



Sample ID	Easting	Northing	RL	Au (ppb)
SS31625	501527	1172912	416	2
SS31626	501479	1172912	416	3
SS31627	501428	1172911	418	4
SS31628	501377	1172912	420	5
SS31629	501328	1172911	421	6
SS31630	501377	1172813	418	4
SS31631	501428	1172812	419	5
SS31632	501477	1172812	418	4
SS31633	501527	1172812	418	2
SS31634	501579	1172812	419	3
SS31635	501628	1172812	422	2
SS31636	501676	1172811	422	3
SS31637	501726	1172811	422	4
SS31638	501780	1172813	419	18
SS31639	501778	1172712	431	19
SS31640	501727	1172710	435	14
SS31641	501678	1172711	439	9
SS31642	501630	1172712	438	1
SS31643	501577	1172711	438	4
SS31644	501528	1172711	438	1
SS31645	501479	1172711	432	9
SS31646	501427	1172712	429	15
SS31647	501378	1172712	428	24

Table 2. Tole Soil Sample Details

Sample ID	Easting	Northing	RL	Au (ppb)
SS30001	507236	1173888	408	8
SS30002	507195	1173862	406	6
SS30003	507152	1173833	407	8
SS30004	507115	1173807	410	7
SS30005	507070	1173782	411	8
SS30006	507028	1173757	412	13
SS30007	506986	1173723	414	10
SS30008	506946	1173697	424	3
SS30009	506904	1173669	427	5
SS30010	506862	1173643	430	6
SS30011	506819	1173617	434	6
SS30012	506781	1173588	436	10
SS30013	506736	1173560	441	6
SS30014	506694	1173536	437	6
SS30015	506653	1173504	442	26
SS30016	506611	1173479	441	4
SS30017	506569	1173451	446	6

For personal use only



For personal use only

Sample ID	Easting	Northing	RL	Au (ppb)
SS30018	506529	1173421	456	12
SS30019	506484	1173396	459	21
SS30020	506444	1173369	463	13
SS30021	506401	1173339	456	49
SS30022	506358	1173314	450	<b>79</b>
SS30023	506319	1173287	446	15
SS30024	506277	1173260	444	21
SS30025	506220	1173342	454	4
SS30026	506263	1173372	451	7
SS30027	506303	1173400	455	44
SS30028	506350	1173425	474	<b>55</b>
SS30029	506389	1173453	490	11
SS30030	506427	1173485	471	39
SS30031	506473	1173508	464	13
SS30032	506513	1173533	452	4
SS30033	506555	1173562	444	3
SS30034	506597	1173590	441	6
SS30035	506643	1173616	437	13
SS30036	506682	1173643	434	14
SS30037	506724	1173672	430	12
SS30038	506766	1173699	432	17
SS30039	506807	1173726	429	3
SS30040	506849	1173753	427	3
SS30041	506891	1173781	423	6
SS30042	506932	1173807	420	10
SS30043	506975	1173834	418	6
SS30044	507019	1173863	417	3
SS30045	507058	1173891	415	3
SS30046	507101	1173917	408	5
SS30047	507142	1173941	409	9
SS30048	507185	1173972	406	4
SS30049	507044	1173999	406	4
SS30050	507002	1173971	411	4
SS30052	506961	1173946	408	6
SS30053	506916	1173917	411	8
SS30054	506877	1173893	410	6
SS30055	506834	1173867	419	7
SS30056	506793	1173836	416	1
SS30057	506754	1173808	421	1
SS30058	506710	1173782	422	16
SS30059	506669	1173755	419	7
SS30060	506627	1173728	424	15
SS30061	506584	1173700	432	3
SS30062	506543	1173673	436	<b>380</b>
SS30063	506501	1173646	442	21



For personal use only

Sample ID	Easting	Northing	RL	Au (ppb)
SS30064	506461	1173619	449	3
SS30065	506418	1173591	452	16
SS30066	506379	1173565	455	23
SS30067	506335	1173534	447	<b>52</b>
SS30068	506292	1173512	444	47
SS30069	506251	1173482	444	10
SS30070	506208	1173454	445	8
SS30071	506167	1173426	453	3
SS30072	506908	1174029	408	2
SS30073	506866	1173999	404	5
SS30074	506821	1173977	411	7
SS30075	506785	1173950	412	<b>68</b>
SS30076	506742	1173923	418	11
SS30077	506693	1173899	413	27
SS30078	506657	1173869	419	21
SS30079	506614	1173840	423	5
SS30080	506571	1173811	426	9
SS30081	506530	1173786	435	7
SS30082	506487	1173756	439	13
SS30083	506448	1173730	437	8
SS30084	506405	1173703	434	<b>55</b>
SS30085	506364	1173673	435	10
SS30086	506323	1173648	433	15
SS30087	506278	1173621	434	39
SS30088	506238	1173592	429	10
SS30089	506194	1173564	432	10
SS30090	506154	1173540	439	8
SS30091	506112	1173511	439	<b>51</b>
SS30092	506768	1174060	404	33
SS30093	506727	1174033	404	11
SS30094	506685	1174004	408	6
SS30095	506640	1173974	408	11
SS30096	506602	1173950	410	16
SS30097	506560	1173921	410	22
SS30098	506520	1173895	409	31
SS30099	506476	1173867	415	23
SS30100	506434	1173841	419	7
SS30102	506391	1173812	422	8
SS30103	506351	1173785	422	5
SS30104	506309	1173759	423	17
SS30105	506267	1173731	423	27
SS30106	506224	1173704	424	13
SS30107	506181	1173676	428	14
SS30108	506141	1173650	433	8
SS30109	506098	1173621	439	6



For personal use only

Sample ID	Easting	Northing	RL	Au (ppb)
SS30110	506056	1173596	444	9
SS30111	505016	1175186	434	11
SS30112	505059	1175211	434	5
SS30113	505103	1175242	431	4
SS30114	505146	1175267	433	4
SS30115	505185	1175294	429	5
SS30116	505227	1175322	430	4
SS30117	505270	1175349	429	12
SS30118	505311	1175376	426	4
SS30119	505354	1175404	427	42
SS30120	505394	1175431	428	10
SS30121	505437	1175458	424	5
SS30122	505478	1175486	425	30
SS30123	505522	1175513	423	6
SS30124	505565	1175540	419	15
SS30125	505605	1175571	423	8
SS30126	505646	1175595	420	6
SS30127	505689	1175621	419	6
SS30128	505730	1175649	413	4
SS30129	505773	1175677	414	10
SS30130	505814	1175703	411	12
SS30131	505855	1175732	412	9
SS30132	505896	1175758	412	8
SS30133	505939	1175786	413	26
SS30134	505982	1175814	409	7
SS30135	506023	1175841	413	6
SS30136	506065	1175869	413	3
SS30137	506106	1175896	412	3
SS30138	506149	1175924	415	4
SS30139	506189	1175951	420	4
SS30140	506232	1175977	422	3
SS30141	506274	1176005	423	3
SS30142	506316	1176032	425	2
SS30143	506358	1176060	425	3
SS30144	506413	1175976	421	5
SS30145	506371	1175949	420	4
SS30146	506330	1175921	417	6
SS30147	506288	1175894	416	4
SS30148	506245	1175867	413	4
SS30149	506203	1175838	415	4
SS30150	506162	1175813	410	9
SS30152	506118	1175786	410	5
SS30153	506077	1175756	408	6
SS30154	506036	1175728	410	7
SS30155	505995	1175703	411	8



For personal use only

Sample ID	Easting	Northing	RL	Au (ppb)
SS30156	505952	1175675	410	11
SS30157	505911	1175649	410	13
SS30158	505868	1175622	415	10
SS30159	505827	1175593	416	10
SS30160	505785	1175566	419	6
SS30161	505744	1175538	422	15
SS30162	505701	1175512	423	1
SS30163	505658	1175485	426	10
SS30164	505615	1175458	427	<b>575</b>
SS30165	505574	1175429	428	8
SS30166	505533	1175402	433	7
SS30167	505489	1175374	425	7
SS30168	505449	1175347	429	6
SS30169	505409	1175320	429	14
SS30170	505365	1175294	430	5
SS30171	505323	1175265	428	4
SS30172	505282	1175238	431	5
SS30173	505241	1175210	434	24
SS30174	505198	1175183	434	4
SS30175	505156	1175156	436	8
SS30176	505114	1175129	433	4
SS30177	505073	1175100	432	4
SS30178	506467	1175892	426	2
SS30179	506425	1175866	417	3
SS30180	506383	1175839	417	3
SS30181	506342	1175809	416	3
SS30182	506299	1175783	413	4
SS30183	506259	1175756	412	4
SS30184	506217	1175729	412	4
SS30185	506173	1175701	412	8
SS30186	506131	1175671	409	8
SS30187	506092	1175648	406	9
SS30188	506048	1175618	412	10
SS30189	506007	1175593	413	10
SS30190	505966	1175563	416	4
SS30191	505925	1175538	417	6
SS30192	505882	1175510	419	<b>450</b>
SS30193	505839	1175480	422	9
SS30194	505797	1175455	423	8
SS30195	505756	1175427	430	37
SS30196	505714	1175400	428	8
SS30197	505672	1175373	429	10
SS30198	505630	1175345	429	10
SS30199	505587	1175319	431	11
SS30200	505546	1175291	429	2



For personal use only

Sample ID	Easting	Northing	RL	Au (ppb)
SS30202	505503	1175263	426	9
SS30203	505462	1175235	426	10
SS30204	505420	1175208	427	6
SS30205	505380	1175182	430	9
SS30206	505339	1175156	433	8
SS30207	505295	1175127	433	9
SS30208	505251	1175101	433	6
SS30209	505210	1175072	433	6
SS30210	505169	1175045	434	3
SS30211	505127	1175018	435	20
SS30212	506521	1175809	420	5
SS30213	506480	1175781	419	3
SS30214	506442	1175754	416	4
SS30215	506396	1175727	415	7
SS30216	506356	1175700	410	4
SS30217	506312	1175672	410	6
SS30218	506271	1175645	407	7
SS30219	506217	1175617	408	<b>82</b>
SS30220	506188	1175590	409	9
SS30221	506145	1175563	412	9
SS30222	506101	1175533	413	8
SS30223	506059	1175508	416	9
SS30224	506019	1175481	417	19
SS30225	505979	1175453	419	6
SS30226	505936	1175428	422	5
SS30227	505893	1175402	426	7
SS30228	505853	1175372	427	6
SS30229	505810	1175344	430	11
SS30230	505768	1175320	433	20
SS30231	505727	1175290	433	<b>169</b>
SS30232	505684	1175262	433	19
SS30233	505643	1175235	436	8
SS30234	505601	1175206	436	10
SS30235	505560	1175179	436	4
SS30236	505517	1175152	435	14
SS30237	505475	1175125	435	<b>70</b>
SS30238	505433	1175097	437	4
SS30239	505391	1175070	436	8
SS30240	505349	1175043	436	6
SS30241	505309	1175016	434	6
SS30242	505267	1174987	435	5
SS30243	505224	1174961	432	3
SS30244	505181	1174933	430	5
SS30245	506576	1175726	415	4



For personal use only

Sample ID	Easting	Northing	RL	Au (ppb)
SS30246	506535	1175698	414	3
SS30247	506494	1175669	414	4
SS30248	506452	1175643	413	4
SS30249	506408	1175617	408	6
SS30250	506370	1175589	408	4
SS30252	506316	1175557	406	6
SS30253	506280	1175522	407	7
SS30254	506242	1175505	411	7
SS30255	506200	1175479	413	6
SS30256	506158	1175451	414	5
SS30257	506116	1175423	418	5
SS30258	506073	1175396	423	9
SS30259	506032	1175369	424	4
SS30260	505990	1175343	431	6
SS30261	505949	1175316	431	5
SS30262	505907	1175287	430	5
SS30263	505865	1175259	433	3
SS30264	505826	1175236	436	11
SS30265	505780	1175205	436	11
SS30266	505739	1175178	436	33
SS30267	505697	1175152	440	<b>56</b>
SS30268	505657	1175123	445	<b>52</b>
SS30269	505617	1175097	440	9
SS30270	505571	1175068	441	11
SS30271	505530	1175041	441	11
SS30272	505488	1175014	439	3
SS30273	505445	1174987	441	25
SS30274	505405	1174960	441	3
SS30275	505362	1174932	437	11
SS30276	505321	1174905	435	4
SS30277	505279	1174878	434	8
SS30278	505237	1174850	432	3
SS30279	506631	1175640	417	3
SS30280	506588	1175614	420	5
SS30281	506548	1175586	414	2
SS30282	506507	1175560	409	4
SS30283	506465	1175533	409	7
SS30284	506422	1175505	404	2
SS30285	506385	1175484	405	25
SS30286	506338	1175450	406	8
SS30287	506296	1175422	407	4
SS30288	506254	1175395	411	5
SS30289	506213	1175368	411	<b>448</b>
SS30290	506170	1175340	418	25



For personal use only

Sample ID	Easting	Northing	RL	Au (ppb)
SS30291	506129	1175314	424	11
SS30292	506091	1175286	428	3
SS30293	506044	1175257	429	4
SS30294	506002	1175232	432	6
SS30295	505961	1175204	436	10
SS30296	505920	1175177	436	5
SS30297	505878	1175150	441	8
SS30298	505835	1175123	440	15
SS30299	505795	1175094	441	14
SS30300	505752	1175067	439	9
SS30302	505710	1175040	438	47
SS30303	505668	1175012	434	19
SS30304	505626	1174985	441	47
SS30305	505584	1174962	443	<b>57</b>
SS30306	505542	1174930	439	11
SS30307	505500	1174904	441	7
SS30308	505458	1174876	437	8
SS30309	505416	1174849	439	5
SS30310	505375	1174821	434	4
SS30311	505332	1174794	436	3
SS30312	505293	1174767	434	2
SS30313	506686	1175557	416	6
SS30314	506644	1175529	420	8
SS30315	506600	1175503	413	8
SS30316	506560	1175475	411	2
SS30317	506517	1175448	409	23
SS30318	506480	1175425	407	7
SS30319	506437	1175392	406	8
SS30320	506393	1175367	408	7
SS30321	506351	1175339	411	14
SS30322	506308	1175311	414	18
SS30323	506269	1175281	415	<b>74</b>
SS30324	506221	1175256	416	21
SS30325	506180	1175232	418	5
SS30326	506141	1175203	424	19
SS30327	506099	1175172	428	6
SS30328	506057	1175148	431	5
SS30329	506016	1175120	433	5
SS30330	505974	1175093	432	16
SS30331	505932	1175066	440	8
SS30332	505889	1175038	443	<b>55</b>
SS30333	505847	1175012	446	17
SS30334	505807	1174984	442	12
SS30335	505771	1174957	434	41



For personal use only

Sample ID	Easting	Northing	RL	Au (ppb)
SS30336	505724	1174927	435	39
SS30337	505682	1174899	437	22
SS30338	505640	1174875	445	19
SS30339	505597	1174848	446	4
SS30340	505555	1174819	446	4
SS30341	505513	1174793	441	8
SS30342	505472	1174765	442	8
SS30343	505430	1174737	442	5
SS30344	505389	1174708	440	3
SS30345	505347	1174682	439	7
SS30346	506741	1175474	410	7
SS30347	506700	1175447	407	6
SS30348	506657	1175420	408	23
SS30349	506615	1175392	409	6
SS30350	506573	1175364	406	7
SS30352	506531	1175337	408	6
SS30353	506489	1175308	407	3
SS30354	506444	1175282	408	9
SS30355	506406	1175256	410	5
SS30356	506367	1175229	411	10
SS30357	506323	1175201	416	4
SS30358	506278	1175172	422	2
SS30359	506239	1175147	428	6
SS30360	506200	1175120	423	18
SS30361	506154	1175091	424	35
SS30362	506113	1175064	429	8
SS30363	506068	1175036	432	13
SS30364	506032	1175010	434	6
SS30365	505988	1174982	435	12
SS30366	505945	1174955	441	20
SS30367	505902	1174927	445	60
SS30368	505861	1174900	430	18
SS30369	505820	1174871	428	12
SS30370	505780	1174847	427	39
SS30371	505735	1174819	430	46
SS30372	505696	1174790	435	14
SS30373	505653	1174763	444	11
SS30374	505610	1174738	443	6
SS30375	505567	1174708	438	22
SS30376	505528	1174684	439	13
SS30377	505485	1174654	437	6
SS30378	505442	1174626	439	4
SS30379	505403	1174599	438	18
SS30380	506796	1175391	410	12



For personal use only

Sample ID	Easting	Northing	RL	Au (ppb)
SS30381	506752	1175363	409	3
SS30382	506714	1175336	406	5
SS30383	506669	1175308	404	5
SS30384	506630	1175279	405	6
SS30385	506583	1175257	405	7
SS30386	506545	1175225	403	8
SS30387	506502	1175199	399	7
SS30388	506457	1175175	407	11
SS30389	506422	1175143	410	7
SS30390	506374	1175118	412	5
SS30391	506334	1175090	413	6
SS30392	506292	1175063	417	<b>64</b>
SS30393	506250	1175037	418	12
SS30394	506209	1175008	419	8
SS30395	506165	1174984	421	15
SS30396	506122	1174950	422	19
SS30397	506087	1174923	427	8
SS30398	506042	1174897	429	<b>128</b>
SS30399	506002	1174871	430	19
SS30400	505957	1174844	431	33
SS30402	505918	1174814	431	19
SS30403	505873	1174789	428	8
SS30404	505833	1174761	426	14
SS30405	505789	1174735	430	8
SS30406	505749	1174708	438	8
SS30407	505711	1174681	450	6
SS30408	505666	1174653	445	13
SS30409	505622	1174625	439	7
SS30410	505581	1174597	436	6
SS30411	505540	1174570	430	15
SS30412	505497	1174543	430	6
SS30413	505456	1174515	429	9
SS30414	506850	1175306	416	4
SS30415	506806	1175278	411	3
SS30416	506768	1175254	406	3
SS30417	506724	1175224	407	3
SS30418	506673	1175205	404	5
SS30419	506640	1175169	406	9
SS30420	506597	1175138	406	11
SS30421	506558	1175115	405	7
SS30422	506515	1175086	409	32
SS30423	506476	1175055	408	13
SS30424	506430	1175034	409	9
SS30425	506389	1175008	413	6



For personal use only

Sample ID	Easting	Northing	RL	Au (ppb)
SS30426	506349	1174979	416	10
SS30427	506305	1174951	419	10
SS30428	506264	1174921	422	13
SS30429	506219	1174899	426	21
SS30430	506178	1174869	428	38
SS30431	506138	1174843	428	11
SS30432	506093	1174811	430	14
SS30433	506053	1174787	430	43
SS30434	506014	1174759	428	21
SS30435	505972	1174732	425	30
SS30436	505930	1174705	421	34
SS30437	505886	1174673	423	16
SS30438	505846	1174651	423	5
SS30439	505802	1174625	428	9
SS30440	505756	1174595	435	12
SS30441	505720	1174568	443	6
SS30442	505678	1174541	442	7
SS30443	505637	1174513	438	6
SS30444	505595	1174486	433	6
SS30445	505553	1174460	428	16
SS30446	505509	1174432	425	5
SS30447	506905	1175221	406	3
SS30448	506863	1175193	403	5
SS30449	506822	1175168	401	2
SS30450	506781	1175141	402	2
SS30452	506737	1175114	403	3
SS30453	506696	1175086	403	3
SS30454	506654	1175062	399	4
SS30455	506611	1175027	400	6
SS30456	506567	1175005	403	5
SS30457	506528	1174978	402	7
SS30458	506484	1174950	403	2
SS30459	506444	1174922	407	2
SS30460	506402	1174891	411	7
SS30461	506357	1174867	414	5
SS30462	506316	1174842	419	5
SS30463	506277	1174812	424	15
SS30464	506234	1174783	424	18
SS30465	506194	1174759	424	18
SS30466	506152	1174726	422	26
SS30467	506110	1174703	423	11
SS30468	506066	1174676	420	4
SS30469	506024	1174648	419	12
SS30470	505981	1174621	421	<b>120</b>



For personal use only

Sample ID	Easting	Northing	RL	Au (ppb)
SS30471	505942	1174593	417	<b>97</b>
SS30472	505899	1174565	413	17
SS30473	505856	1174537	417	5
SS30474	505816	1174513	421	6
SS30475	505773	1174484	425	4
SS30476	505732	1174456	427	4
SS30477	505690	1174430	434	7
SS30478	505649	1174402	431	7
SS30479	505609	1174376	428	7
SS30480	505564	1174347	425	3
SS30481	506959	1175140	410	3
SS30482	506916	1175112	409	4
SS30483	506877	1175085	409	2
SS30484	506834	1175055	410	4
SS30485	506792	1175029	405	3
SS30486	506750	1175003	404	3
SS30487	506708	1174976	404	4
SS30488	506665	1174947	403	3
SS30489	506623	1174922	404	5
SS30490	506584	1174890	404	5
SS30491	506541	1174865	403	4
SS30492	506499	1174838	405	5
SS30493	506458	1174811	407	3
SS30494	506411	1174787	410	3
SS30495	506371	1174753	423	<b>53</b>
SS30496	506330	1174728	426	6
SS30497	506287	1174703	423	19
SS30498	506245	1174671	421	24
SS30499	506205	1174646	419	7
SS30500	506164	1174620	423	7
SS30502	506121	1174593	422	6
SS30503	506078	1174565	421	9
SS30504	506039	1174536	422	5
SS30505	505996	1174509	418	10
SS30506	505955	1174483	417	11
SS30507	505913	1174455	416	5
SS30508	505871	1174428	419	6
SS30509	505829	1174401	422	5
SS30510	505787	1174373	423	9
SS30511	505745	1174346	425	3
SS30512	505704	1174319	425	12
SS30513	505661	1174292	423	18
SS30514	505623	1174269	427	4
SS30515	507014	1175055	414	8



For personal use only

Sample ID	Easting	Northing	RL	Au (ppb)
SS30516	506972	1175028	413	5
SS30517	506930	1175000	412	3
SS30518	506888	1174973	410	3
SS30519	506847	1174945	407	4
SS30520	506805	1174918	405	4
SS30521	506763	1174891	405	6
SS30522	506721	1174864	404	7
SS30523	506553	1174754	405	7
SS30524	506510	1174726	410	11
SS30525	506467	1174702	413	13
SS30526	506428	1174672	420	9
SS30527	506388	1174644	421	9
SS30528	506346	1174618	415	10
SS30529	506300	1174589	414	41
SS30530	506261	1174564	421	33
SS30531	506221	1174536	419	12
SS30532	506177	1174508	420	7
SS30533	506135	1174482	416	12
SS30534	506093	1174454	419	4
SS30535	506052	1174427	420	12
SS30536	506009	1174398	417	12
SS30537	505967	1174371	414	25
SS30538	505926	1174345	413	6
SS30539	505885	1174316	417	8
SS30540	505842	1174291	417	7
SS30541	505799	1174263	417	6
SS30542	505757	1174236	416	3
SS30543	505715	1174208	419	4
SS30544	505673	1174179	413	7
SS30545	505729	1174098	414	6
SS30546	505771	1174125	415	8
SS30547	505813	1174151	415	8
SS30548	507069	1174971	423	7
SS30549	507026	1174941	423	4
SS30550	506985	1174917	419	5
SS30552	506943	1174889	415	5
SS30553	506901	1174862	413	9
SS30554	506859	1174835	409	6
SS30555	506607	1174672	407	6
SS30556	506566	1174643	409	10
SS30557	506525	1174616	416	4
SS30558	506483	1174589	420	10
SS30559	506442	1174561	419	10
SS30560	506399	1174534	415	9



For personal use only

Sample ID	Easting	Northing	RL	Au (ppb)
SS30561	506356	1174507	411	34
SS30562	506313	1174479	417	23
SS30563	506273	1174451	413	6
SS30564	506231	1174425	413	5
SS30565	506189	1174397	414	14
SS30566	506149	1174369	407	18
SS30567	506106	1174343	412	17
SS30568	506064	1174313	410	11
SS30569	506022	1174288	415	8
SS30570	505980	1174260	413	11
SS30571	505938	1174233	415	6
SS30572	505895	1174208	412	5
SS30573	505856	1174182	414	8
SS30574	506538	1174505	412	15
SS30575	506582	1174531	412	10
SS30576	506621	1174559	408	8
SS30577	506955	1174778	411	4
SS30578	506998	1174806	418	4
SS30579	507040	1174833	422	4
SS30580	507083	1174862	426	5
SS30581	507123	1174889	431	9
SS30582	506495	1174477	414	2
SS30583	506452	1174450	412	6
SS30584	506412	1174423	411	20
SS30585	506370	1174395	412	18
SS30586	506327	1174368	412	10
SS30587	506286	1174341	412	8
SS30588	506247	1174314	406	10
SS30589	506204	1174286	409	9
SS30590	506161	1174258	407	29
SS30591	506118	1174233	409	7
SS30592	506069	1174198	409	7
SS30593	506034	1174182	408	5
SS30594	505997	1174144	410	5
SS30595	505959	1174115	407	6
SS30596	505919	1174090	408	5
SS30597	505867	1174068	407	6
SS30598	505826	1174041	407	8
SS30599	505784	1174014	411	7
SS30600	505839	1173930	414	8
SS30602	505880	1173956	415	<b>206</b>
SS30603	505923	1173983	414	6
SS30604	505964	1174011	415	9
SS30605	506005	1174038	415	11



For personal use only

Sample ID	Easting	Northing	RL	Au (ppb)
SS30606	506048	1174066	413	13
SS30607	506088	1174094	414	12
SS30608	506132	1174121	414	9
SS30609	506166	1174146	409	13
SS30610	506211	1174175	411	32
SS30611	506258	1174202	409	15
SS30612	506294	1174228	410	19
SS30613	506337	1174254	410	9
SS30614	506386	1174281	408	11
SS30615	506424	1174312	410	13
SS30616	506466	1174339	409	21
SS30617	506506	1174366	408	11
SS30618	506550	1174393	410	7
SS30619	506591	1174421	410	10
SS30620	506927	1174640	414	7
SS30621	506969	1174667	415	5
SS30622	507011	1174696	418	4
SS30623	507051	1174721	416	9
SS30624	507096	1174748	419	5
SS30625	507133	1174774	418	6
SS30626	507178	1174804	419	4
SS30627	507231	1174723	417	5
SS30628	507192	1174691	414	5
SS30629	507147	1174666	415	4
SS30630	507106	1174637	416	5
SS30631	507064	1174611	414	8
SS30632	507024	1174583	415	6
SS30633	506980	1174557	411	3
SS30634	506731	1174391	402	10
SS30635	506690	1174365	404	14
SS30636	506646	1174337	404	9
SS30637	506605	1174311	405	21
SS30638	506562	1174285	405	12
SS30639	506523	1174255	404	8
SS30640	506476	1174223	407	11
SS30641	506444	1174203	406	16
SS30642	506395	1174174	407	17
SS30643	506353	1174146	410	16
SS30644	506312	1174120	410	12
SS30645	506270	1174092	411	15
SS30646	506227	1174063	411	15
SS30647	506186	1174036	412	20
SS30648	506143	1174009	411	18
SS30649	506102	1173981	414	18



For personal use only

Sample ID	Easting	Northing	RL	Au (ppb)
SS30650	506059	1173955	416	18
SS30652	506019	1173927	413	12
SS30653	505977	1173899	412	6
SS30654	505932	1173873	416	7
SS30655	505892	1173844	414	7
SS30656	505948	1173762	420	5
SS30657	505990	1173789	420	7
SS30658	506031	1173816	420	5
SS30659	506074	1173844	418	5
SS30660	506116	1173871	420	16
SS30661	506158	1173898	418	14
SS30662	507254	1174497	406	5
SS30663	507161	1174554	406	9
SS30664	507202	1174582	406	2
SS30665	507247	1174610	408	4
SS30666	506713	1174144	406	8
SS30667	506672	1174116	406	11
SS30668	506628	1174086	409	9
SS30669	506590	1174059	405	9
SS30670	506547	1174033	407	18
SS30671	506503	1174008	410	19
SS30672	506463	1173982	409	27
SS30673	506419	1173951	415	64
SS30674	506378	1173924	417	9
SS30675	506337	1173897	419	8
SS30676	506294	1173869	418	12
SS30677	506254	1173839	420	19
SS30678	506212	1173815	422	17
SS30679	506170	1173787	422	38
SS30680	506129	1173763	423	16
SS30681	506085	1173733	425	6
SS30682	506044	1173704	433	4
SS30683	506002	1173680	430	5
SS30684	506199	1173924	413	17
SS30685	506241	1173953	415	15
SS30686	506283	1173980	415	<b>92</b>
SS30687	506324	1174008	414	17
SS30688	506366	1174036	410	22
SS30689	506408	1174062	410	11
SS30690	506450	1174089	408	12
SS30691	506491	1174117	409	15
SS30692	506534	1174144	408	13
SS30693	503428	1169412	422	3
SS30694	503379	1169412	424	3



For personal use only

Sample ID	Easting	Northing	RL	Au (ppb)
SS30695	503329	1169412	424	2
SS30696	503278	1169413	425	3
SS30697	503228	1169412	426	2
SS30698	503179	1169411	427	1
SS30699	503127	1169413	427	1
SS30700	503078	1169412	429	2
SS30702	503027	1169412	429	4
SS30703	502978	1169412	430	1
SS30704	502929	1169413	431	3
SS30705	502878	1169412	431	3
SS30706	502829	1169412	431	1
SS30707	502778	1169412	430	4
SS30708	502728	1169412	428	2
SS30709	502678	1169412	428	2
SS30710	502628	1169411	430	2
SS30711	502577	1169413	431	6
SS30712	502528	1169412	432	5
SS30713	502478	1169412	432	3
SS30714	502428	1169413	432	4
SS30715	502378	1169413	434	3
SS30716	502377	1169311	433	5
SS30717	502430	1169315	436	4
SS30718	502480	1169316	435	5
SS30719	502529	1169315	432	5
SS30720	502579	1169314	436	4
SS30721	502629	1169312	435	4
SS30722	502677	1169313	436	3
SS30723	502730	1169314	435	4
SS30724	502779	1169313	438	5
SS30725	502828	1169313	436	5
SS30726	502881	1169313	432	2
SS30727	502929	1169312	433	5
SS30728	502979	1169313	435	4
SS30729	503026	1169312	431	5
SS30730	503078	1169313	432	3
SS30731	503130	1169313	430	3
SS30732	503179	1169314	430	2
SS30733	503229	1169313	429	2
SS30734	503280	1169312	428	2
SS30735	503328	1169311	427	3
SS30736	503381	1169311	430	4
SS30737	503429	1169311	430	3
SS30738	503480	1169312	430	6
SS30739	503529	1169311	430	9



For personal use only

Sample ID	Easting	Northing	RL	Au (ppb)
SS30740	502380	1169218	440	3
SS30741	502428	1169216	439	5
SS30742	502479	1169212	435	5
SS30743	502528	1169213	433	3
SS30744	502582	1169213	435	3
SS30745	502628	1169212	437	3
SS30746	502675	1169213	439	4
SS30747	502730	1169216	448	3
SS30748	502777	1169213	450	4
SS30749	502830	1169213	442	2
SS30750	502878	1169213	442	4
SS30752	502928	1169213	454	4
SS30753	502977	1169213	444	3
SS30754	503028	1169213	439	3
SS30755	503080	1169212	440	3
SS30756	503129	1169214	434	4
SS30757	503179	1169215	435	9
SS30758	503228	1169214	435	17
SS30759	503278	1169213	434	5
SS30760	503330	1169214	431	8
SS30761	503381	1169215	429	3
SS30762	503429	1169214	428	4
SS30763	503478	1169214	433	3
SS30764	503530	1169215	422	5
SS30765	503579	1169214	427	4
SS30766	503625	1169212	427	4
SS30767	503678	1169214	429	2
SS30768	503729	1169212	427	11
SS30769	503776	1169214	427	3
SS30770	503827	1169212	430	20
SS30771	503877	1169211	429	4
SS30772	503925	1169214	427	5
SS30773	503975	1169211	428	8
SS30774	504025	1169213	432	4
SS30775	504079	1169213	433	3
SS30776	504128	1169214	433	4
SS30777	504178	1169215	434	4
SS30778	504229	1169216	433	5
SS30779	504280	1169216	433	5
SS30780	504329	1169214	435	4
SS30781	504379	1169212	437	4
SS30782	504429	1169213	439	5
SS30783	504480	1169215	436	4
SS30784	504527	1169214	434	4



For personal use only

Sample ID	Easting	Northing	RL	Au (ppb)
SS30785	504579	1169213	436	5
SS30786	504626	1169214	441	4
SS30787	504678	1169215	440	3
SS30788	504730	1169216	439	4
SS30789	504779	1169215	435	3
SS30790	504826	1169214	440	5
SS30791	504874	1169217	444	6
SS30792	504931	1169215	443	24
SS30793	504980	1169213	440	12
SS30794	505030	1169211	430	21
SS30795	505080	1169214	424	14
SS30796	505129	1169213	422	14
SS30797	505180	1169212	423	8
SS30798	505228	1169211	431	13
SS30799	505282	1169212	424	9
SS30800	505333	1169213	419	6
SS30802	505378	1169214	420	5
SS30803	505428	1169211	418	3
SS30804	505481	1169211	415	3
SS30805	505533	1169211	411	3
SS30806	505583	1169208	417	7
SS30807	505626	1169211	413	5
SS30808	504129	1169311	435	5
SS30809	504178	1169310	440	11
SS30810	504226	1169310	442	5
SS30811	504277	1169312	437	4
SS30812	504329	1169315	438	5
SS30813	504378	1169311	438	4
SS30814	504428	1169315	437	4
SS30815	504477	1169310	438	12
SS30816	504527	1169311	439	30
SS30817	504580	1169312	437	4
SS30818	504628	1169314	437	4
SS30819	504678	1169314	436	7
SS30820	504728	1169314	437	2
SS30821	504776	1169314	437	2
SS30822	504829	1169313	435	3
SS30823	504880	1169316	430	4
SS30824	504928	1169312	442	8
SS30825	504979	1169314	440	<b>56</b>
SS30826	505029	1169314	442	18
SS30827	505078	1169313	439	31
SS30828	505128	1169311	399	8
SS30829	505176	1169314	428	14



For personal use only

Sample ID	Easting	Northing	RL	Au (ppb)
SS30830	505229	1169312	432	8
SS30831	505278	1169312	427	7
SS30832	505326	1169312	427	4
SS30833	505381	1169314	428	3
SS30834	505428	1169316	427	4
SS30835	505479	1169314	422	4
SS30836	505532	1169313	422	11
SS30837	505582	1169316	419	10
SS30838	505629	1169311	416	4
SS30839	504126	1169412	437	4
SS30840	504180	1169411	434	3
SS30841	504228	1169413	436	13
SS30842	504278	1169413	435	5
SS30843	504328	1169412	438	6
SS30844	504378	1169412	434	13
SS30845	504428	1169412	433	5
SS30846	504477	1169413	433	4
SS30847	504528	1169412	433	4
SS30848	504578	1169412	435	3
SS30849	504627	1169412	435	5
SS30850	504678	1169413	433	3
SS30852	504728	1169412	435	3
SS30853	504778	1169412	434	4
SS30854	504828	1169412	434	4
SS30855	504879	1169412	435	3
SS30856	504928	1169412	435	5
SS30857	504977	1169412	434	14
SS30858	505028	1169412	435	15
SS30859	505078	1169412	435	12
SS30860	505128	1169413	432	10
SS30861	505178	1169412	435	7
SS30862	505226	1169412	434	48
SS30863	505278	1169412	431	6
SS30864	505327	1169412	430	3
SS30865	505378	1169413	423	25
SS30866	505428	1169412	418	15
SS30867	505478	1169412	416	13
SS30868	505527	1169412	414	7
SS30869	505578	1169412	413	9
SS30870	505628	1169412	414	10
SS30871	504678	1169513	408	5
SS30872	504728	1169511	407	6
SS30873	504778	1169512	407	3
SS30874	504829	1169512	408	3



For personal use only

Sample ID	Easting	Northing	RL	Au (ppb)
SS30875	504878	1169512	408	3
SS30876	504929	1169512	409	2
SS30877	504979	1169511	408	3
SS30878	505028	1169511	408	6
SS30879	505078	1169512	408	6
SS30880	505128	1169512	406	7
SS30881	505178	1169512	404	5
SS30882	505227	1169512	401	4
SS30883	505279	1169512	396	9
SS30884	505328	1169511	393	6
SS30885	505378	1169513	389	8
SS30886	505428	1169511	388	18
SS30887	505478	1169512	387	8
SS30888	505528	1169512	386	7
SS30889	505579	1169513	387	6
SS30890	505628	1169513	386	10
SS30891	505628	1169612	388	27
SS30892	505578	1169612	388	16
SS30893	505528	1169612	387	5
SS30894	505478	1169612	387	13
SS30895	505428	1169612	388	6
SS30896	505379	1169612	388	11
SS30897	505328	1169611	389	7
SS30898	505277	1169613	393	3
SS30899	505278	1169715	413	7
SS30900	505330	1169715	407	8
SS30902	505378	1169714	409	9
SS30903	505430	1169714	408	7
SS30904	505479	1169714	409	6
SS30905	505530	1169713	414	6
SS30906	505578	1169713	413	6
SS30907	505629	1169714	412	8
SS30908	505627	1169810	414	6
SS30909	505580	1169813	412	4
SS30910	505526	1169811	411	5
SS30911	505478	1169813	412	6
SS30912	505427	1169813	411	9
SS30913	505379	1169812	409	10
SS30914	505327	1169813	411	12
SS30915	505279	1169813	413	76
SS30916	505229	1169813	412	8
SS30917	505177	1169814	415	15
SS30918	505129	1169814	412	9
SS30919	505078	1169812	418	10



For personal use only

Sample ID	Easting	Northing	RL	Au (ppb)
SS30920	505078	1169912	412	9
SS30921	505128	1169913	411	11
SS30922	505180	1169912	412	9
SS30923	505226	1169912	412	18
SS30924	505278	1169912	413	8
SS30925	505328	1169913	413	8
SS30926	505427	1169915	409	5
SS30927	505479	1169912	413	6
SS30928	505528	1169913	410	5
SS30929	505629	1169912	420	5
SS30930	505627	1170012	423	8
SS30931	505578	1170013	422	7
SS30932	505526	1170013	422	5
SS30933	505478	1170012	420	<b>53</b>
SS30934	505429	1170013	415	<b>105</b>
SS30935	505375	1170013	416	7
SS30936	505327	1170012	415	7
SS30937	505278	1170011	416	5
SS30938	505230	1170012	416	6
SS30939	505179	1170011	414	6
SS30940	505131	1170013	417	<b>293</b>
SS30941	505081	1170011	417	11
SS30942	505077	1170112	412	7
SS30943	505128	1170112	414	8
SS30944	505178	1170112	414	7
SS30945	505228	1170112	414	7
SS30946	505278	1170112	414	6
SS30947	505328	1170112	417	9
SS30948	505378	1170112	419	<1
SS30949	505428	1170112	418	9
SS30950	505478	1170112	422	3
SS30952	505528	1170112	425	3
SS30953	505578	1170112	426	3
SS30954	505628	1170112	428	3
SS30955	505578	1169912	416	17
SS30956	505628	1170212	425	4
SS30957	505578	1170213	425	5
SS30958	505526	1170212	422	5
SS30959	505477	1170212	420	11
SS30960	505428	1170212	417	7
SS30961	505378	1170212	416	9
SS30962	505328	1170212	415	5
SS30963	505278	1170212	416	7
SS30964	505227	1170211	414	15



For personal use only

Sample ID	Easting	Northing	RL	Au (ppb)
SS30965	505179	1170211	414	8
SS30966	505127	1170210	415	6
SS30967	505079	1170212	415	20
SS30968	505028	1170212	414	7
SS30969	504978	1170212	417	5
SS30970	503979	1170312	403	1
SS30971	504027	1170312	403	5
SS30972	504077	1170312	402	5
SS30973	504127	1170312	401	5
SS30974	504178	1170312	400	4
SS30975	504228	1170312	400	4
SS30976	504277	1170313	399	4
SS30977	504327	1170313	399	3
SS30978	504378	1170313	399	4
SS30979	504427	1170311	399	2
SS30980	504477	1170312	398	2
SS30981	504530	1170313	398	5
SS30982	504578	1170313	398	2
SS30983	504628	1170312	397	2
SS30984	504678	1170312	396	5
SS30985	504728	1170312	394	3
SS30986	504780	1170310	392	3
SS30987	504828	1170312	391	2
SS30988	504878	1170312	389	6
SS30989	504927	1170312	388	8
SS30990	504977	1170312	387	11
SS30991	505027	1170311	387	8
SS30992	505078	1170312	386	4
SS30993	505127	1170312	387	4
SS30994	505179	1170311	387	6
SS30995	505228	1170312	387	5
SS30996	505279	1170312	388	4
SS30997	505329	1170312	390	4
SS30998	505378	1170312	393	7
SS30999	505427	1170310	395	16
SS31000	505479	1170312	398	6
SS31002	505528	1170312	400	5
SS31003	505579	1170311	402	5
SS31004	505628	1170312	404	5
SS31005	503978	1170412	405	8
SS31006	503928	1170412	406	3
SS31007	503877	1170411	406	2
SS31008	503827	1170412	406	2
SS31009	503778	1170412	407	3



For personal use only

Sample ID	Easting	Northing	RL	Au (ppb)
SS31010	503729	1170411	408	5
SS31011	503677	1170410	409	4
SS31012	503628	1170414	410	3
SS31013	503579	1170412	408	5
SS31014	503528	1170412	405	4
SS31015	503476	1170411	402	4
SS31016	503429	1170412	403	21
SS31017	503377	1170410	402	7
SS31018	503329	1170411	400	5
SS31019	503280	1170413	401	17
SS31020	503229	1170412	400	6
SS31021	503178	1170412	400	2
SS31022	503129	1170411	400	4
SS31023	503077	1170413	400	5
SS31024	503028	1170413	400	2
SS31025	502978	1170413	400	3
SS31026	502929	1170413	401	3
SS31027	502878	1170411	402	5
SS31028	502828	1170411	404	3
SS31029	502777	1170411	404	5
SS31030	502728	1170411	400	3
SS31031	502679	1170412	399	15
SS31032	502628	1170412	399	3
SS31033	502579	1170412	399	10
SS31034	502529	1170412	399	<b>128</b>
SS31035	502480	1170412	400	4
SS31036	502428	1170412	402	3
SS31037	502379	1170412	401	2
SS31038	505628	1170412	426	5
SS31039	505578	1170412	425	4
SS31040	505527	1170412	421	<b>191</b>
SS31041	505478	1170412	418	6
SS31042	505428	1170412	417	3
SS31043	505378	1170412	418	1
SS31044	505328	1170412	413	4
SS31045	505278	1170412	410	34
SS31046	505228	1170412	413	29
SS31047	505178	1170412	412	3
SS31048	505128	1170412	408	4
SS31049	505078	1170412	409	3
SS31050	505028	1170412	409	2
SS31052	504978	1170412	412	2
SS31053	504928	1170412	413	12
SS31054	504878	1170412	414	2



For personal use only

Sample ID	Easting	Northing	RL	Au (ppb)
SS31055	504828	1170412	415	1
SS31056	504778	1170412	419	2
SS31057	504729	1170411	420	6
SS31058	504678	1170412	420	2
SS31059	504628	1170412	424	5
SS31060	504578	1170412	421	2
SS31061	504528	1170412	424	2
SS31062	504478	1170412	423	3
SS31063	504428	1170411	424	2
SS31064	504378	1170412	422	4
SS31065	504328	1170412	422	2
SS31066	504278	1170412	426	3
SS31067	504228	1170412	425	2
SS31068	504178	1170412	425	5
SS31069	504128	1170412	426	3
SS31070	504079	1170412	427	3
SS31071	504028	1170412	427	2
SS31072	505628	1170512	427	3
SS31073	505578	1170512	423	1
SS31074	505528	1170512	424	4
SS31075	505478	1170512	423	3
SS31076	505428	1170512	421	3
SS31077	505378	1170512	425	3
SS31078	505328	1170512	422	5
SS31079	505278	1170512	420	1
SS31080	505228	1170512	418	4
SS31081	505178	1170512	419	4
SS31082	505128	1170512	418	4
SS31083	505078	1170512	418	3
SS31084	505028	1170512	417	3
SS31085	504978	1170512	412	4
SS31086	504928	1170512	414	5
SS31087	504878	1170512	415	42
SS31088	504828	1170512	415	1
SS31089	504778	1170512	415	1
SS31090	504728	1170512	418	5
SS31091	504678	1170512	419	4
SS31092	504628	1170512	421	2
SS31093	504578	1170512	421	6
SS31094	504528	1170512	422	4
SS31095	504478	1170512	422	5
SS31096	504428	1170512	422	5
SS31097	504378	1170512	424	2
SS31098	504328	1170512	425	4



For personal use only

Sample ID	Easting	Northing	RL	Au (ppb)
SS31099	504278	1170512	424	1
SS31100	504228	1170512	424	1
SS31102	504178	1170512	425	1
SS31103	504128	1170512	426	3
SS31104	504078	1170512	427	1
SS31105	504028	1170512	428	2
SS31106	502827	1170512	434	2
SS31107	502778	1170512	436	2
SS31108	502729	1170512	437	8
SS31109	502679	1170511	437	1
SS31110	502628	1170512	434	4
SS31111	502578	1170512	432	8
SS31112	502528	1170512	433	2
SS31113	502478	1170512	434	3
SS31114	502429	1170512	434	3
SS31115	502378	1170512	434	8
SS31116	502879	1170512	433	3
SS31117	502927	1170512	433	1
SS31118	502977	1170513	433	1
SS31119	503028	1170513	434	4
SS31120	503079	1170512	434	4
SS31121	503128	1170511	434	4
SS31122	503178	1170512	434	4
SS31123	503228	1170512	434	2
SS31124	503277	1170512	433	4
SS31125	503326	1170513	432	7
SS31126	503379	1170512	434	8
SS31127	503429	1170512	435	7
SS31128	503478	1170513	437	8
SS31129	503528	1170511	438	3
SS31130	503578	1170512	438	1
SS31131	503628	1170512	438	3
SS31132	503728	1170511	438	1
SS31133	503778	1170512	436	2
SS31134	503829	1170512	434	2
SS31135	503878	1170512	433	3
SS31136	503928	1170512	433	3
SS31137	503978	1170512	431	8
SS31138	503678	1170511	438	3
SS31139	502678	1170612	407	38
SS31140	502628	1170612	407	2
SS31141	502577	1170612	406	3
SS31142	502529	1170612	406	2
SS31143	502477	1170612	405	4



For personal use only

Sample ID	Easting	Northing	RL	Au (ppb)
SS31144	502429	1170613	405	3
SS31145	502378	1170613	405	3
SS31146	502728	1170612	404	3
SS31147	502778	1170612	403	3
SS31148	502827	1170611	403	8
SS31149	502877	1170613	404	5
SS31150	502927	1170613	404	2
SS31152	502979	1170612	405	1
SS31153	503029	1170613	405	4
SS31154	503078	1170612	405	4
SS31155	503177	1170612	405	5
SS31156	503227	1170612	405	3
SS31157	503278	1170612	405	3
SS31158	503329	1170612	404	2
SS31159	503380	1170611	404	6
SS31160	503428	1170613	405	5
SS31161	503479	1170612	406	2
SS31162	503528	1170612	406	1
SS31163	503578	1170612	407	2
SS31164	503628	1170613	408	3
SS31165	503678	1170612	407	2
SS31166	503729	1170611	404	>1000
SS31167	503777	1170611	402	5
SS31168	503827	1170613	399	5
SS31169	503879	1170612	399	4
SS31170	503928	1170613	398	5
SS31171	503978	1170612	397	5
SS31172	503127	1170611	405	5
SS31173	505628	1170612	416	5
SS31174	505578	1170611	418	7
SS31175	505528	1170612	421	9
SS31176	505478	1170612	420	5
SS31177	505427	1170610	421	23
SS31178	505378	1170612	420	12
SS31179	505328	1170612	416	24
SS31180	505278	1170612	416	1
SS31181	505228	1170612	415	3
SS31182	505178	1170612	413	4
SS31183	505128	1170612	413	4
SS31184	505078	1170612	413	5
SS31185	505028	1170613	412	6
SS31186	504978	1170612	412	9
SS31187	504928	1170612	410	4
SS31188	504878	1170612	410	4



For personal use only

Sample ID	Easting	Northing	RL	Au (ppb)
SS31189	504828	1170612	413	4
SS31190	504778	1170612	414	2
SS31191	504728	1170612	416	3
SS31192	504677	1170612	416	3
SS31193	504628	1170612	417	3
SS31194	504578	1170612	418	5
SS31195	504528	1170612	416	4
SS31196	504478	1170612	418	5
SS31197	504428	1170612	419	2
SS31198	504378	1170612	420	2
SS31199	504328	1170612	421	4
SS31200	504278	1170612	422	3
SS31202	504228	1170612	423	4
SS31203	504178	1170612	423	4
SS31204	504128	1170612	423	5
SS31205	504078	1170612	422	9
SS31206	504028	1170612	425	5
SS31207	502378	1169513	427	2
SS31208	502429	1169513	428	4
SS31209	502478	1169513	427	3
SS31210	502529	1169513	427	2
SS31211	502578	1169513	426	2
SS31212	502629	1169513	426	1
SS31213	502678	1169513	426	2
SS31214	502728	1169512	424	2
SS31215	502779	1169513	427	4
SS31216	502828	1169512	424	2
SS31217	502879	1169512	426	2
SS31218	502928	1169511	426	3
SS31219	502975	1169511	421	3
SS31220	503028	1169513	425	1
SS31221	503078	1169513	423	2
SS31222	503128	1169512	420	1
SS31223	503179	1169512	423	1
SS31224	503229	1169512	425	6
SS31225	503279	1169511	424	1
SS31226	503328	1169512	423	4
SS31227	503378	1169511	424	4
SS31228	503327	1169613	422	5
SS31229	503279	1169611	421	3
SS31230	503228	1169612	421	3
SS31231	503179	1169612	421	12
SS31232	503129	1169611	422	47
SS31233	503079	1169611	423	<b>154</b>



For personal use only

Sample ID	Easting	Northing	RL	Au (ppb)
SS31234	503029	1169610	423	5
SS31235	502978	1169610	423	26
SS31236	502929	1169612	423	4
SS31237	502878	1169610	426	2
SS31238	502829	1169611	430	14
SS31239	502779	1169612	423	4
SS31240	502728	1169610	424	4
SS31241	502678	1169610	429	6
SS31242	502627	1169611	426	5
SS31243	502580	1169611	431	2
SS31244	502527	1169610	429	6
SS31245	502477	1169612	430	3
SS31246	502428	1169611	431	3
SS31247	502379	1169612	433	3
SS31248	502579	1170714	423	2
SS31249	502778	1170712	421	1
SS31250	502828	1170712	422	3
SS31252	502878	1170711	422	4
SS31253	503128	1170712	424	4
SS31254	503178	1170713	424	5
SS31255	503228	1170712	423	3
SS31256	503279	1170713	422	3
SS31257	503328	1170712	421	3
SS31258	503378	1170712	422	4
SS31259	503427	1170712	423	4
SS31260	503478	1170712	423	4
SS31261	503528	1170712	424	5
SS31262	503578	1170713	424	6
SS31263	503628	1170712	424	4
SS31264	503678	1170712	422	31
SS31265	503727	1170713	421	5
SS31266	503777	1170713	418	3
SS31267	503829	1170712	415	17
SS31268	503878	1170711	414	2
SS31269	503927	1170712	413	5
SS31270	503978	1170712	412	4
SS31271	502528	1170712	423	5
SS31272	502478	1170711	424	5
SS31273	502428	1170713	424	5
SS31274	502378	1170712	423	4
SS31275	502628	1170712	423	5
SS31276	502677	1170712	422	4
SS31277	502727	1170713	422	4
SS31278	502929	1170712	423	3



For personal use only

Sample ID	Easting	Northing	RL	Au (ppb)
SS31279	502978	1170712	424	3
SS31280	503029	1170711	424	4
SS31281	503078	1170711	424	3
SS31282	505629	1170712	407	4
SS31283	505578	1170712	410	9
SS31284	505529	1170712	413	6
SS31285	505478	1170712	409	<b>79</b>
SS31286	505427	1170712	410	10
SS31287	505379	1170711	410	12
SS31288	505327	1170712	411	9
SS31289	505278	1170712	411	4
SS31290	505228	1170712	410	3
SS31291	505179	1170712	409	7
SS31292	505128	1170712	408	5
SS31293	505077	1170712	408	5
SS31294	505028	1170712	408	4
SS31295	504978	1170712	407	4
SS31296	504928	1170713	406	8
SS31297	504878	1170712	406	4
SS31298	504829	1170712	406	10
SS31299	504778	1170712	407	7
SS31300	504728	1170712	408	3
SS31302	504678	1170712	408	2
SS31303	504628	1170712	408	2
SS31304	504578	1170712	409	3
SS31305	504528	1170712	408	<b>60</b>
SS31306	504478	1170712	410	24
SS31307	504429	1170711	410	13
SS31308	504377	1170712	412	2
SS31309	504328	1170712	414	2
SS31310	504278	1170712	415	1
SS31311	504228	1170713	416	2
SS31312	504178	1170712	417	2
SS31313	504127	1170712	417	1
SS31314	504078	1170712	417	1
SS31315	504028	1170712	418	2



## JORC 2012 Table 1 Section 1 and Section 2

### Section 1: Sampling Techniques and Data – Exploration Results

Criteria	JORC Code Explanation	Commentary
<b>Sampling Technique</b>	<p>Nature and quality of sampling (eg cut channels, random chips, or specific specialised industry standard measurement tools appropriate to the minerals under investigation, such as downhole gamma sondes, or handheld XRF instruments, etc). These examples should not be taken as limiting the broad meaning of sampling Include reference to measures taken to ensure sample representivity and the appropriate calibration of any measurement tools or systems used. Aspects of the determination of mineralisation that are Material to the Public Report.</p> <p>In cases where 'industry standard' work has been done this would be relatively simple (eg 'reverse circulation drilling was used to obtain 1 m samples from which 3 kg was pulverised to produce a 30 g charge for fire assay'). In other cases more explanation may be required, such as where there is coarse gold that has inherent sampling problems. Unusual commodities or mineralisation types (eg submarine nodules) may warrant disclosure of detailed information.</p>	<p>Soil samples were collected on a regular grids. Samples were collected in-situ and are generally 2 kg in weight.</p>
<b>Drilling</b>	<p>Drill type (eg core, reverse circulation, open-hole hammer, rotary air blast, auger, Bangka, sonic, etc) and details (eg core diameter, triple or standard tube, depth of diamond tails, face-sampling bit or other type, whether core is oriented and if so, by what method, etc).</p>	<p>There is no new drilling results reported in this announcement.</p>
<b>Drill Sample Recovery</b>	<p>Method of recording and assessing core and chip sample recoveries and results assessed.</p> <p>Measures taken to maximise sample recovery and ensure representative nature of the samples.</p> <p>Whether a relationship exists between sample recovery and grade and whether sample bias may have occurred due to preferential loss/gain of fine/coarse material.</p>	<p>There is no new drilling results reported in this announcement.</p>
<b>Logging</b>	<p>Whether core and chip samples have been geologically and geotechnical logged to a level of detail to support appropriate Mineral Resource estimation, mining studies and metallurgical studies.</p> <p>Whether logging is qualitative or quantitative in nature. Core (or costean/Trench, channel, etc) photography.</p> <p>The total length and percentage of the relevant intersections logged.</p>	<p>Soil samples were geologically logged by lithology type, and any other relevant details were also recorded.</p> <p>Logging is both qualitative and quantitative in nature.</p>
<b>Sub-Sampling Technique and Sample Preparation</b>	<p>If core, whether cut or sawn and whether quarter, half or all core taken. If non-core, whether riffled, tube sampled, rotary split, etc and whether sampled wet or dry.</p> <p>For all sample types, the nature, quality and appropriateness of the sample preparation technique.</p> <p>Quality control procedures adopted for all sub-sampling stages to maximise representivity of samples.</p> <p>Measures taken to ensure that the sampling is representative of the in-situ material collected,</p>	<p>Soil is dug down to 4 to 50 cm. Samples are sieved to collect 2-3kg in plastic bags with individual tags (identifier numbers) and dispatched to the lab for assays.</p> <p>Trench and soil samples were submitted for assay. These samples were first dried at 110°C and then whole crushed and with a 50g sub-sample taken for assay.</p> <p>Field duplicates were collected every 50 samples as part of the soil sampling program.</p>

For personal use only



For personal use only

	including for instance results for field duplicate/second-half sampling. Whether sample sizes are appropriate to the grain size of the material being sampled.	
<b>Quality of Assay Data and Laboratory Tests</b>	<p>The nature, quality and appropriateness of the assaying and laboratory procedures used and whether the technique is considered partial or total.</p> <p>For geophysical tools, spectrometers, handheld XRF instruments, etc, the parameters used in determining the analysis including instrument make and model, reading times, calibrations factors applied and their derivation, etc.</p> <p>Nature of quality control procedures adopted (eg standards, blanks, duplicates, external laboratory checks) and whether acceptable levels of accuracy (ie lack of bias) and precision have been established.</p>	<p>Analysis was conducted by Proslabs in Kouroussa, Guinea, using a standard Fire-Assay 50 followed by ICP-MS method for gold with a upper detection limit of 1000 ppb.</p> <p>Field duplicates have been collected (in the soil sampling program).</p> <p>1 in 50 samples were repeated by the laboratory and blanks and standards were used (by the lab) at a rate of 1 in 50 samples.</p> <p>Lab repeats indicate a moderate level of correlation</p>
<b>Verification of Sampling and Assaying</b>	<p>The verification of significant intersections by either independent or alternative company personnel.</p> <p>The use of twinned holes.</p> <p>Documentation of primary data, data entry procedures, data verification, data storage (physical and electronic) protocols.</p> <p>Discuss any adjustment to assay data</p>	<p>No verification of significant intersections by independent persons has been undertaken.</p> <p>There are no twin holes.</p> <p>All assay results in the database have been checked against the original laboratory assay certificates (PDF's)</p> <p>There has been no adjustment to assay data.</p>
<b>Location of Data points</b>	<p>Accuracy and quality of surveys used to locate drill holes (collar and down- hole surveys), trenches, mine workings and other locations used in Mineral Resource estimation.</p> <p>Specification of the grid system used Quality and adequacy of topographic control</p>	<p>The coordinate system used is WGS84/UTM zone 29N.</p> <p>A handheld Garmin GPS was used to record soil sample co-ordinates.</p>
<b>Data Spacing and Distribution</b>	<p>Data spacing for reporting of Exploration Results</p> <p>Whether the data spacing and distribution is sufficient to establish the degree of geological and grade continuity appropriate for the Mineral Resource and Ore Reserve estimation procedure(s) and classifications applied.</p> <p>Whether sample compositing has been applied</p>	<p>Soil samples were collected on a variety of grids which included:</p> <ul style="list-style-type: none"> <li>• 50 m by 100 m grid</li> <li>• 100 m by 400 m grid</li> <li>• 100 m by 200 m grid</li> <li>• 100 m by 500, 600 or 700m spaced lines</li> </ul> <p>There is no Mineral Resource and Ore Reserve estimation reported here.</p>
<b>Orientation of Data in Relation to Geological Structure</b>	<p>Whether the orientation of sampling achieves unbiased sampling of possible structures and the extent to which this is known, considering the deposit type.</p> <p>If the relationship between the drilling orientation and the orientation of key mineralised structures is considered to have introduced a sampling bias, this should be assessed and reported if material.</p>	<p>It is not known whether the orientation of the soil sampling has created a bias at this stage.</p>
<b>Sample Security</b>	<p>The measures taken to ensure sample security</p>	<p>All samples taken were hand delivered to the laboratory in Kouroussa. The laboratory checked the samples delivered against the sample dispatch sheet and verified this was correct before commencing analysis.</p>
<b>Section 2 Reporting of Exploration Results</b>		
<b>Mineral Tenement and Land Tenure Status</b>	<p>Type, reference name/number, location and ownership including agreements or material issues with third parties such as joint ventures, partnerships, overriding royalties, native title</p>	<p>The Siguiri Project comprises 14 tenements which range from reconnaissance applications, granted reconnaissance permits and granted exploration permits (see Table 1). Reconnaissance permits allow prospecting and non-ground disturbing</p>



For personal use only

	<p>interests, historical sites, wilderness or national park and environmental settings. The security of the tenure held at the time of reporting along with any known impediments to obtaining a licence to operate in the area.</p>	<p>activity such as surface sampling. Exploration permits allow ground disturbing activity such as auger or RC drilling.</p> <p>Reconnaissance permits can be converted to exploration permits upon justification of results. All permits are valid and registered in the Guinea mining cadastre system.</p> <p>Timbakouna is a Reconnaissance Authorisation which was approved for renewal on the 27<sup>th</sup> August 2025. The application for renewal contained within a work program which included an RC drill program. The work program was approved as with the renewal.</p> <p>The Angex agreement with Wassolon Mining Group is detailed in previous reports</p>
<b>Exploration Done by Other Parties</b>	Acknowledgment and appraisal of exploration by other parties.	<p>There has been very little exploration conducted within the tenement areas. The only historic exploration of note is RC drilling in the Timbakouna tenement and soil sampling in the Kantoumanina. The results of this are discussed in previous reports.</p> <p>There is no known exploration in the Dadjan and Tole permits.</p>
<b>Geology</b>	Deposit type, geological setting and style of mineralisation.	<p>The Siguri Basin projects are situated in rocks of the Birimian Supergroup which consists of meta-sediments (shale, greywacke, cherts) and mafic to intermediate volcanics variably intruded by felsic intrusives such as granite and tonalite.</p> <p>The basin has been multiply deformed with basin wide NW and NE trending faults/shears. Orogenic gold mineralisation is typically hosted within these structural corridors, generally in close proximity to the felsic intrusives which are postulated to be the heat and fluid source for gold mineralisation.</p> <p>Gold mineralisation is typically quartz vein hosted with pyrite, pyrrhotite and hematite and associated sericite and chlorite alteration the main accessory minerals.</p> <p>The Siguri Basin is deeply weathered with a strong laterite surface developed with nodular to pisolitic hard cap which is a host to remobilised gold mineralisation and the target for artisanal gold miners.</p>
<b>Drill Hole Information</b>	<p>A summary of all information material to the understanding of the exploration results including a tabulation of the following information for all Material drill holes:</p> <ul style="list-style-type: none"> <li>• easting and northing of the drill hole collar</li> <li>• elevation or RL (Reduced Level – elevation above sea level in metres) of the drill hole collar</li> <li>• dip and azimuth of the hole</li> <li>• down hole length and interception depth</li> <li>• hole length</li> <li>• If the exclusion of this information is justified on the basis that the information is not Material and this exclusion does not detract from the understanding of the report, the Competent Person should clearly explain why this is the case.</li> </ul>	There is no new drilling results reported in this announcement.
<b>Data Aggregation Methods</b>	In reporting Exploration Results, weighting averaging techniques, maximum and/or minimum grade truncations (eg cutting of high	No data aggregation methods have been applied. All results received have been reported as is.



For personal use only

	<p>grades) and cut-off grades are usually Material and should be stated.</p> <p>Where aggregate intercepts incorporate short lengths of high grade results and longer lengths of low grade results, the procedure used for such aggregation should be stated and some typical examples of such aggregations should be shown in detail.</p> <p>The assumptions used for any reporting of metal equivalent values should be clearly stated.</p>	
<b>Relationship Between Mineralisation Widths and Intercept Lengths</b>	<p>These relationships are particularly important in the reporting of Exploration Results</p> <p>If the geometry of the mineralisation with respect to the drill hole angle is known, its nature should be reported. If it is not known and only the down hole lengths are reported, there should be a clear statement to this effect (eg 'down hole length, true width not known').</p>	No assumption of true widths of the mineralised zones is made in reported results and assays should not be interpreted to be representative sampling of the reported interval – true width not known.
<b>Diagrams</b>	<p>Appropriate maps and sections (with scales) and tabulations of intercepts should be included for any significant discovery being reported. These should include, but not be limited to a plan view of drill hole collar locations and appropriate sectional views.</p>	Diagrams including plan maps with sample results are provided with this report.
<b>Balanced Reporting</b>	<p>Where comprehensive reporting of all Exploration Results is not practicable, representative reporting of both low and high grades and/or widths should be practiced to avoid misleading reporting of Exploration Results.</p>	The company believes this announcement is a balanced report, and that all material information has been reported.
<b>Other Substantive Exploration Data</b>	<p>Other exploration data, if meaningful and material, should be reported including (but not limited to): geological observations; geophysical survey results; geochemical survey results; bulk samples – size and method of treatment; metallurgical test results; bulk density, groundwater, geotechnical and rock characteristics; potential deleterious or contaminating substances.</p>	All substantive historical exploration data has been discussed in previous reports by the company.
<b>Further Work</b>	<p>The nature and scale of planned further work (eg tests for lateral extensions or large scale step out drilling).</p> <p>Diagrams clearly highlighting the areas of possible extensions, including the main geological interpretations and future drilling areas, provided this information is not commercially sensitive.</p>	Planned further work includes further surface sampling, trenching, mapping, and drilling.