



# STAVELY

MINERALS

ASX Code: SVY

## Gold Discovery Opportunities in the Stavely Volcanic Belt

General Meeting – 12 September 2025

ersonal use only



- This presentation contains only an overview of Stavely Minerals Limited (“Stavely” or the “Company”) and its activities and operations. The contents of this presentation, including matters relating to the geology and exploration potential of the Company’s projects, may rely on various assumptions and subjective interpretations which it is not possible to detail in this presentation and which have not been subject to any independent verification.
- This presentation contains a number of forward-looking statements. Known and unknown risks and uncertainties, and factors outside of the Company’s control, may cause the actual results, performance and achievements of the Company to differ materially from those expressed or implied in this presentation.
- To the maximum extent permitted by law, Stavely does not warrant the accuracy, currency or completeness of the information in this presentation, nor the future performance of the Company, and will not be responsible for any loss or damage arising from the use of the information.
- The information contained in this presentation is not a substitute for detailed investigation or analysis of any particular issue. Current and potential investors should seek independent advice before making any investment decision in regard to the Company or its activities.



What does Stavely Minerals offer that is different?



**BIG targets**



ersonal use only



# Stavelly Project

ersonal use only

# The Cayley Lode Mineral Resources Estimate



- **Discovery** – outstanding shallow high-grade copper-gold-silver discovery (September 2019), the Cayley Lode
- **Cayley Lode MRE<sup>1</sup>** – 9.3Mt at 1.23% Cu, 0.23g/t Au and 7.1g/t Ag
- **Total Resources** – 28.3Mt at 0.75% Cu, 0.11g/t Au and 3.5g/t Ag
- **Containing** – 210,000t Cu, 100,000oz Au, 3.2Moz Ag and 2.4kt Zn
- Mineralisation from surface to 300m depth, remains open



Cayley Lode bornite mineralisation - photo from ASX announcement 11 September 2019

<sup>1</sup> Reported in compliance with the JORC Code 2012, see ASX announcement 14 June 2022, see Appendix 1 for classifications

# Stavely Project – Control Major Cu-Au Fertile Volcanic Belts



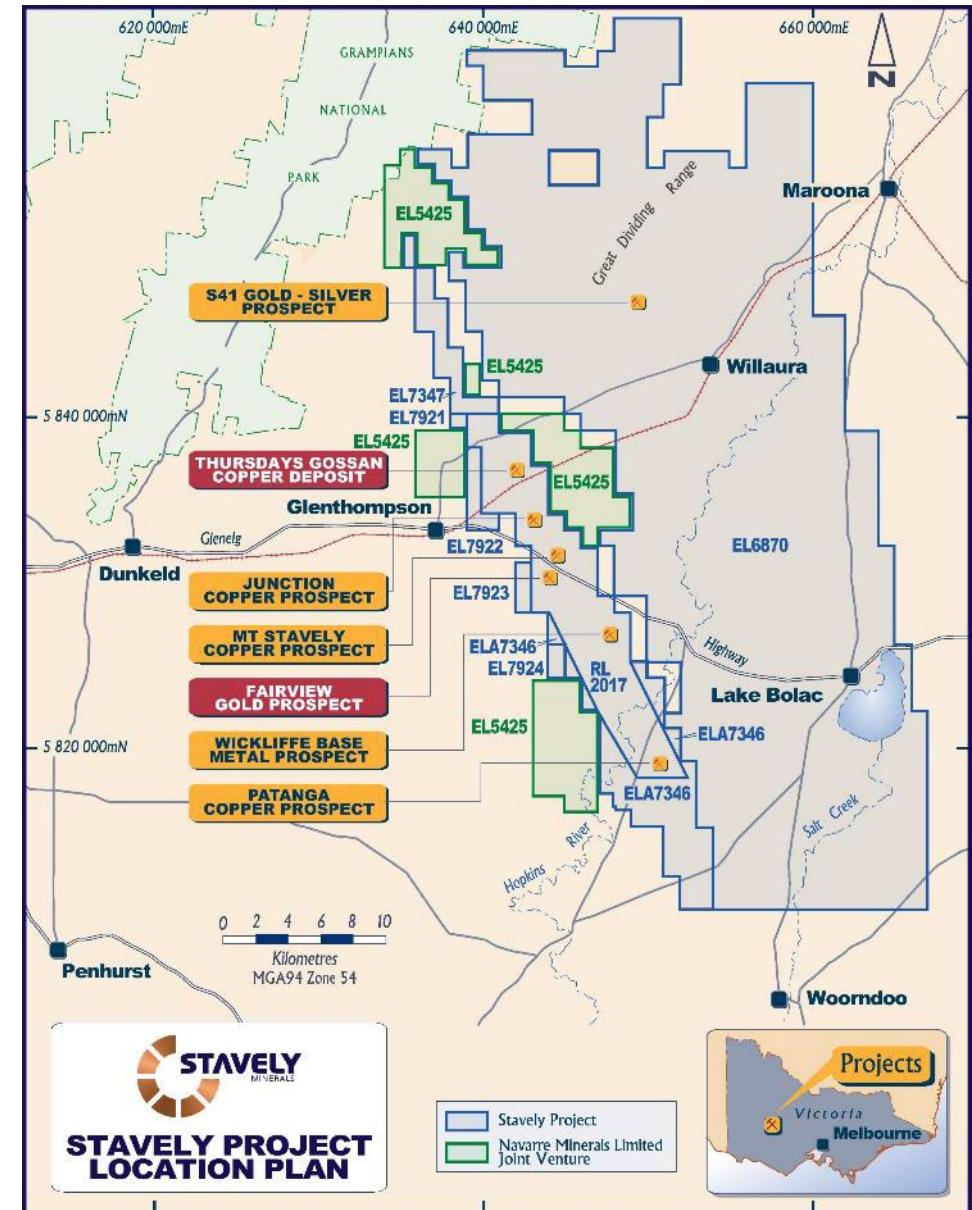
- **Discovery** – outstanding shallow high-grade copper-gold-silver discovery (September 2019), the **Cayley Lode**<sup>1</sup>
- Stavely Minerals strategy to realise value in the Cayley Lode discovery is two-fold:
  1. Discover more copper resources – Junction (access is a priority).
  2. Pursue a gold discovery strategy – adding a copper floatation circuit to a gold plant is a modest additional cost
- **Multiple regional gold discovery opportunities:**
  - Fairview North gold prospect – great recent drilling results<sup>2</sup>
  - Fairview South gold prospect – great recent drilling results<sup>3</sup>
  - S41 breccia-hosted gold – 2km x 750m breccia pipe
    - Only 1 x diamond drill hole in large system, scale potential<sup>4</sup>

<sup>1</sup> See ASX announcement 14 June 2022, Appendix 1

<sup>2</sup> See ASX announcement 17 July 2025

<sup>3</sup> See ASX announcement 14 July 2025

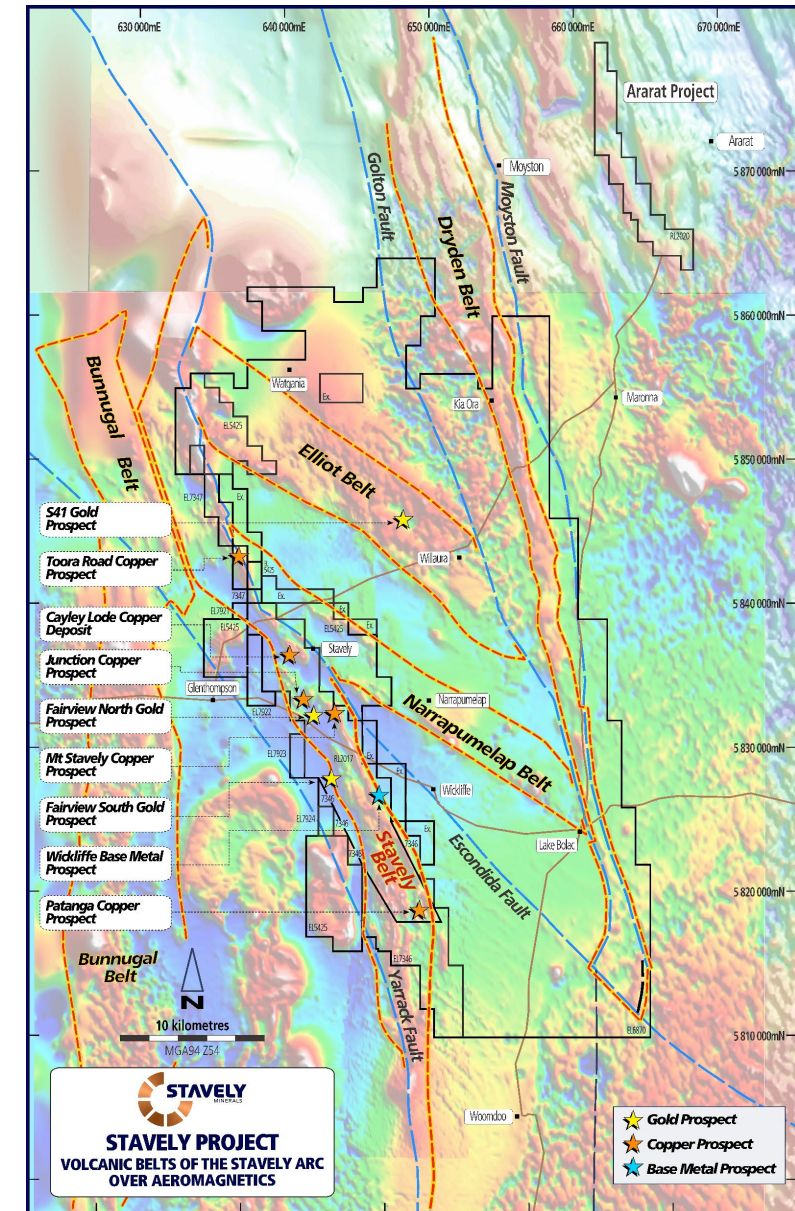
<sup>4</sup> See ASX announcement 23 May 2023 and 10 June 2025



# Stavely Project – Control Major Cu-Au Fertile Volcanic Belts



- **Discovery**– outstanding shallow high-grade copper-gold-silver discovery (September 2019), the **Cayley Lode**<sup>1</sup>
- **Multiple regional gold discovery opportunities:**
  - *Fairview North gold prospect – great recent drilling results*<sup>2</sup>
  - *Fairview South gold prospect – great recent drilling results*<sup>3</sup>
  - *S41 breccia-hosted gold – 2km x 750m breccia pipe*
    - *Only 1 x diamond drill hole in large system, scale potential*<sup>4</sup>
- Stavely Minerals controls tenure over some 130km of various components of the Stavely Arc, an Andean-style continental margin volcanic arc that is well preserved and prospective for several world-class styles of gold mineralisation in addition to the demonstrated copper fertility.



<sup>1</sup> See ASX announcement 14 June 2022, Appendix 1

<sup>2</sup> See ASX announcement 17 July 2025

<sup>3</sup> See ASX announcement 14 July 2025

<sup>4</sup> See ASX announcement 23 May 2023 and 10 June 2025

ersonal use only

# Gold Discovery Opportunities

# Gold Discovery Opportunities

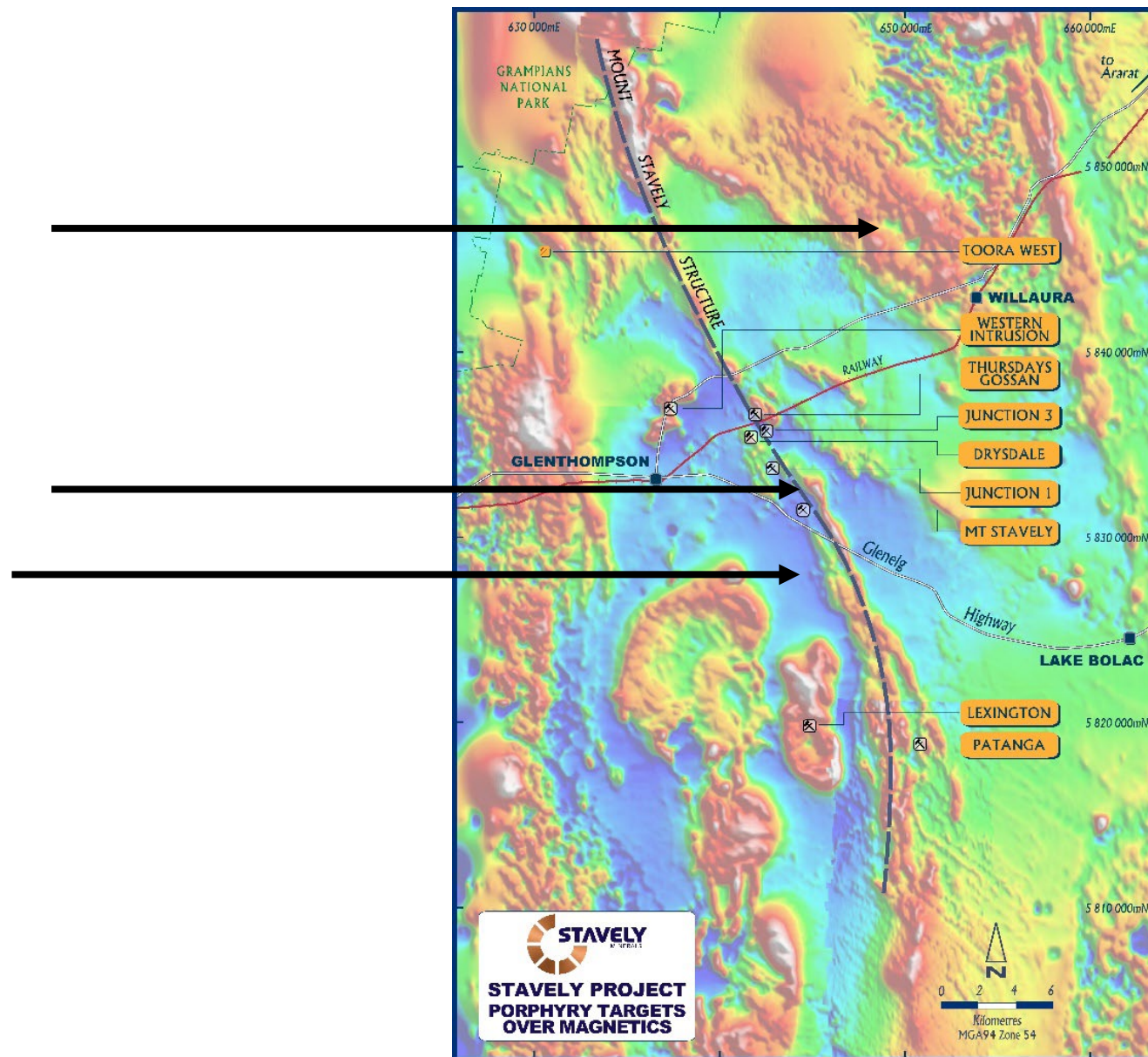


ersonal use only

**S41 breccia-hosted gold prospect**

**Fairview North gold prospect**

**Fairview South gold prospect**



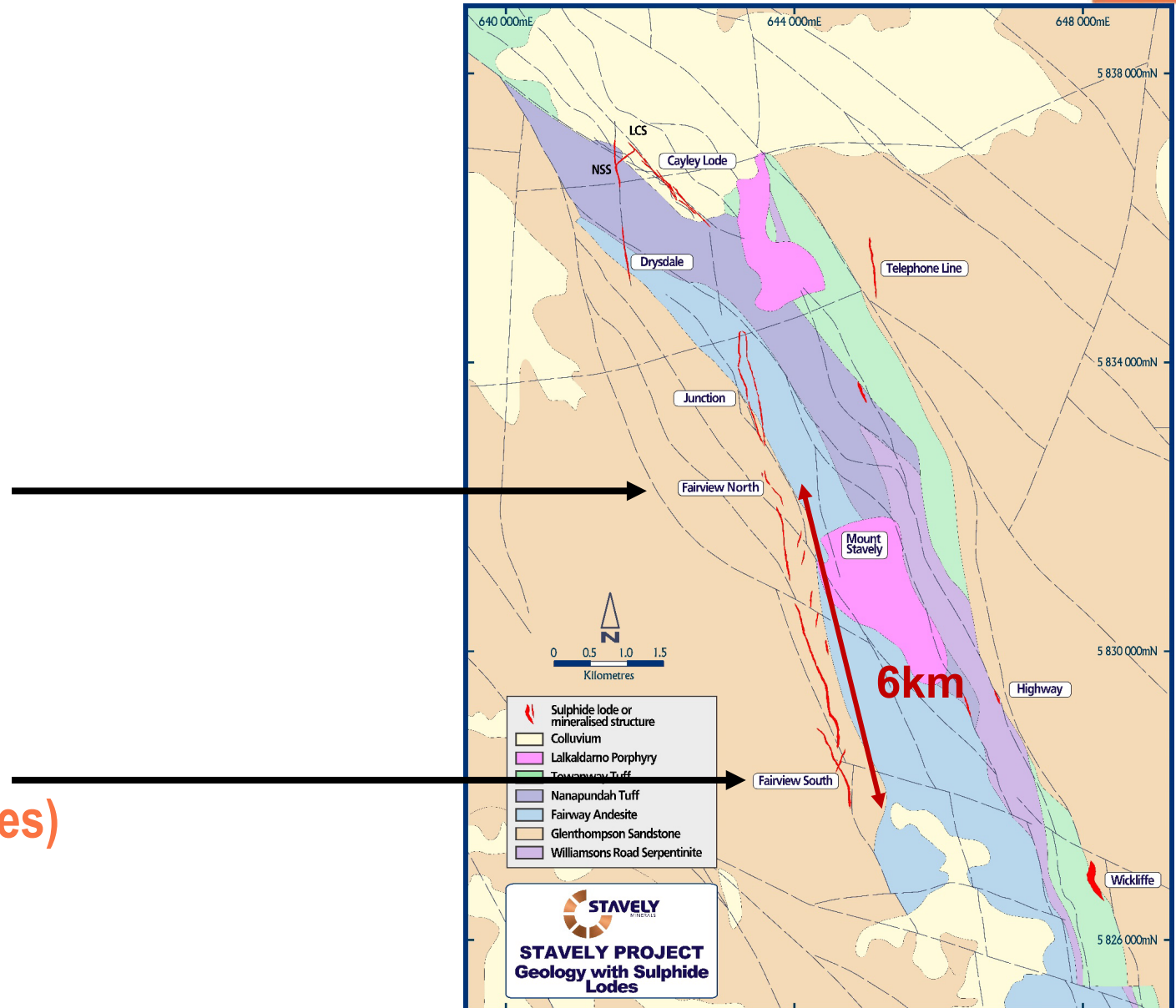
# Gold Discovery Opportunities – Fairview North and South



ersonal use only

**Fairview North gold prospect  
(favourable NW structural control)**

**Fairview South gold prospect  
(gold associated with porphyry dykes)**



ersonal use only

# Fairview North

# Gold Discovery Opportunities – Fairview North<sup>1</sup>



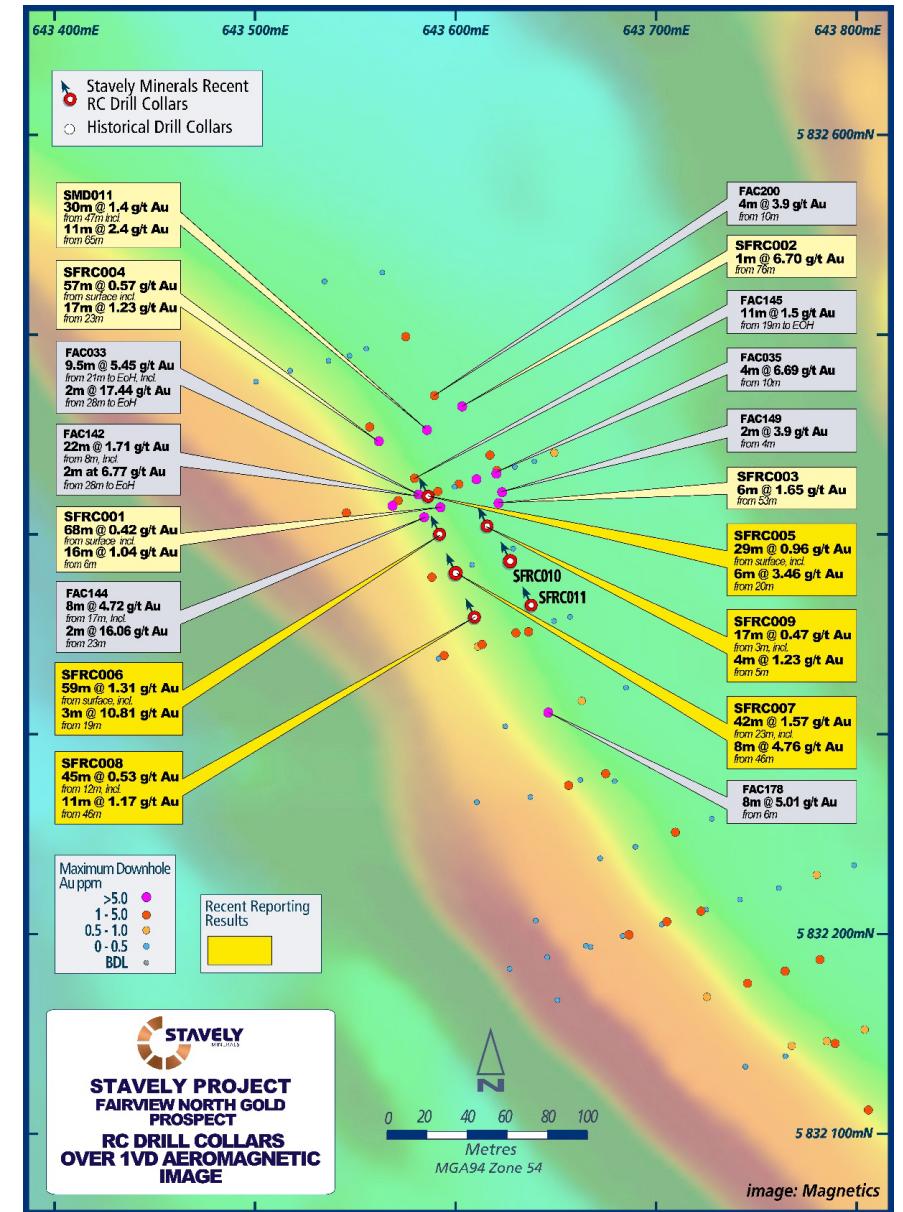
## Previous explorer drill results:

- FAC142 – 22m at 1.71g/t Au from 8m to EoH
  - Incl. 3m at 5.1g/t Au to EoH
- FAC178 – 6m at 6.1g/t Au from 6m
- FAC145 - 11m at 1.5g/t Au from 19m to EoH
- FAC144 – 2m at 16.1g/t Au from 18m
- FAC035 – 6m at 4.6g/t Au from 8m

## Stavely Minerals previous intercepts:

- SMD011 – 30m at 1.4g/t Au from 47m
  - Incl. 11m at 2.4g/t Au from 65m
- SFRC001 – 68m at 0.42g/t Au from surface
  - Incl. 16m @ 1.04g/t Au from 6m
- SFRC002 – 1m at 6.70g/t Au from 76m
- SFRC003 – 6m at 1.65g/t Au from 53m
- SFRC004 – 57m at 0.57g/t Au from surface
  - Incl. 17m at 1.23g/t Au from 23m

<sup>1</sup>See ASX:SVY announcement 20 July 2017 and 22 May 2025



# Gold Discovery Opportunities – Fairview North



## Recent Phase 1 RC drill results:

- 27m at 2.33g/t gold from 13m down-hole, including:
  - 3m at 10.81g/t gold from 19m down-hole, and,
  - 4m at 5.05g/t gold from 30m down-hole

All within a broader zone of 59m at 1.31g/t gold from surface, in drill hole SFRC006

- 8m at 4.76g/t gold from 46m drill depth

Within a broader zone of 42m at 1.57g/t gold from 23m drill depth in drill hole SFRC007.

- 6m at 3.46g/t gold from 20m drill depth

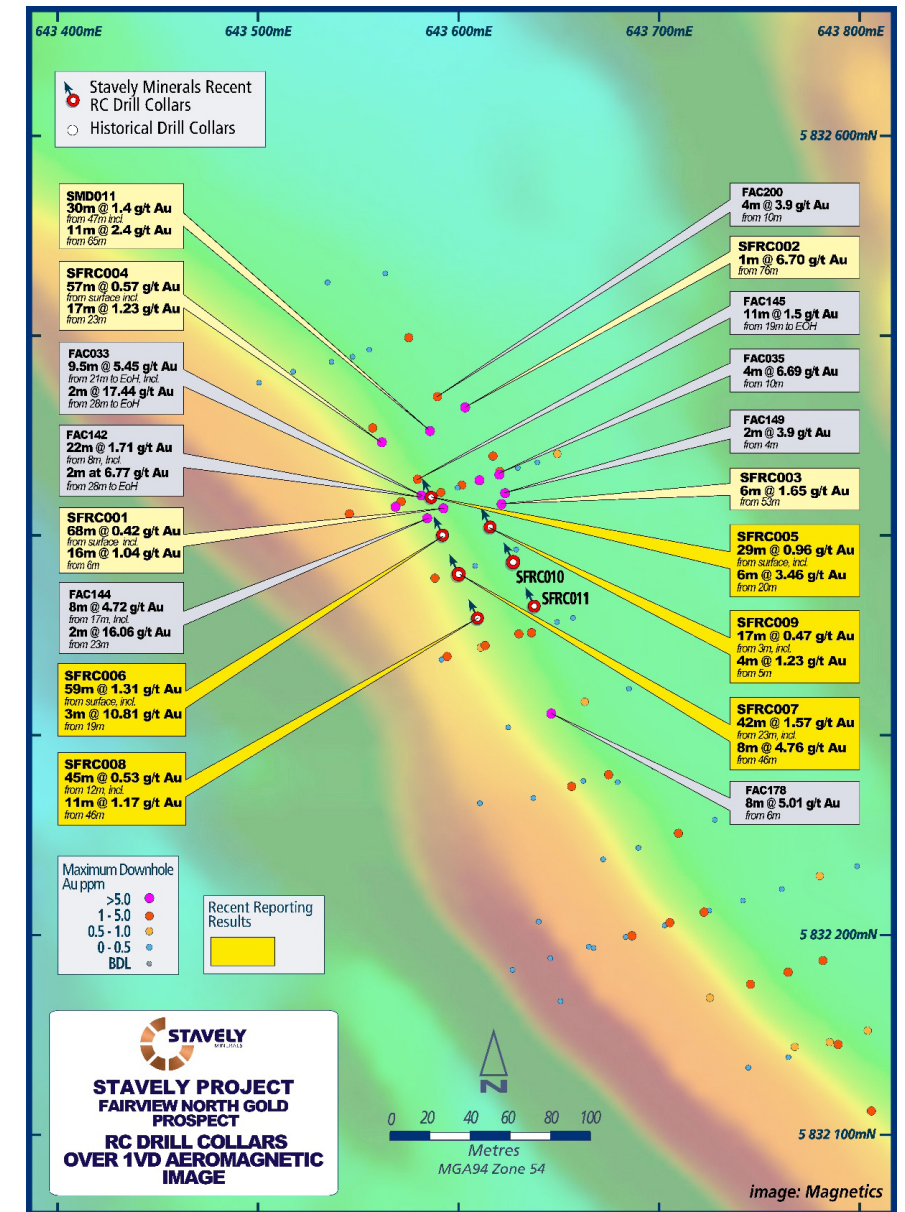
Within a broader zone of 29m at 0.96g/t gold from surface in drill hole SFRC005.

- 11m at 1.17g/t gold from 46m drill depth

Within a broader zone of 45m at 0.53g/t gold from 12m in drill hole SFRC008, and

- 4m at 1.23g/t gold from 5m drill depth

Within a broader zone of 17m at 0.47g/t gold in drill hole SFRC009.



<sup>1</sup>See ASX:SVY announcement 17 July 2025

# Gold Discovery Opportunities – Fairview North



## Recent Phase 1 RC drill results:

- 27m at 2.33g/t gold from 13m down-hole, including:
  - 3m at 10.81g/t gold from 19m down-hole, and,
  - 4m at 5.05g/t gold from 30m down-hole

All within a broader zone of 59m at 1.31g/t gold from surface, in drill hole SFRC006

- 8m at 4.76g/t gold from 46m drill depth

Within a broader zone of 42m at 1.57g/t gold from 23m drill depth in drill hole SFRC007.

- 6m at 3.46g/t gold from 20m drill depth

Within a broader zone of 29m at 0.96g/t gold from surface in drill hole SFRC005.

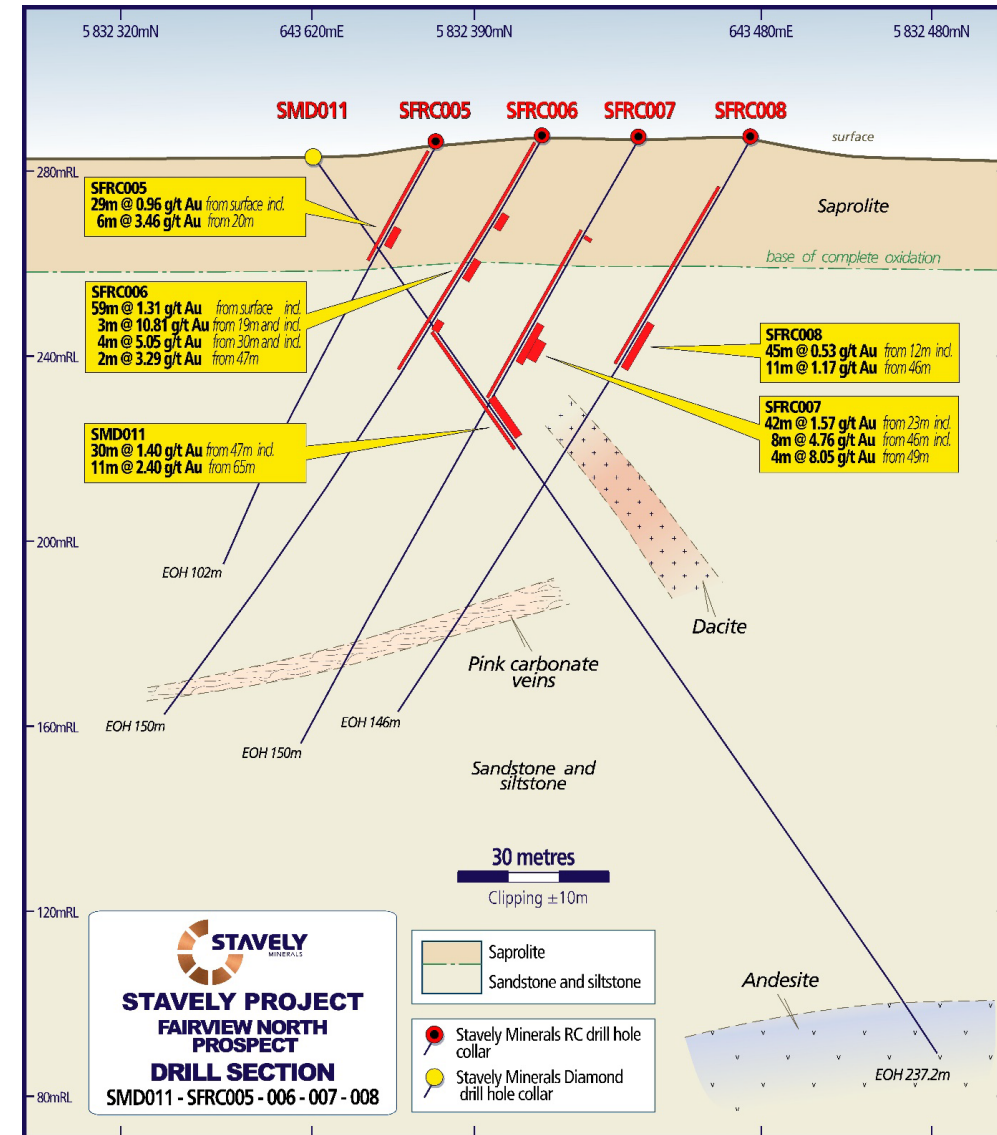
- 11m at 1.17g/t gold from 46m drill depth

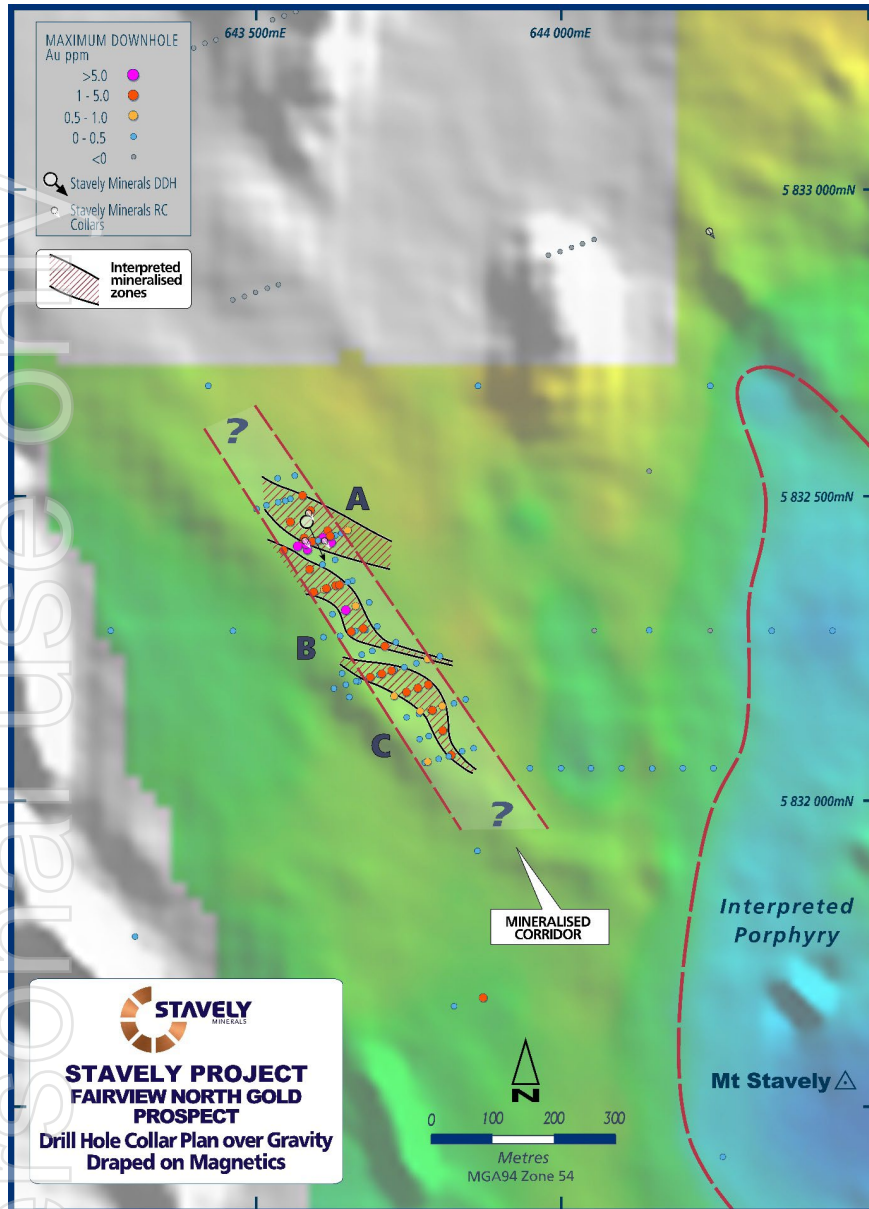
Within a broader zone of 45m at 0.53g/t gold from 12m in drill hole SFRC008, and

- 4m at 1.23g/t gold from 5m drill depth

Within a broader zone of 17m at 0.47g/t gold in drill hole SFRC009.

<sup>1</sup>See ASX:SVY announcement 17 July 2025





## Attractive gold target:

- Favourable NW 'kink' in the Fairview trend
- Same fertile orientation as the Cayley Lode
- Magnetics indicate it is located on the contact between sandstone and diorite intrusion – competency contrast

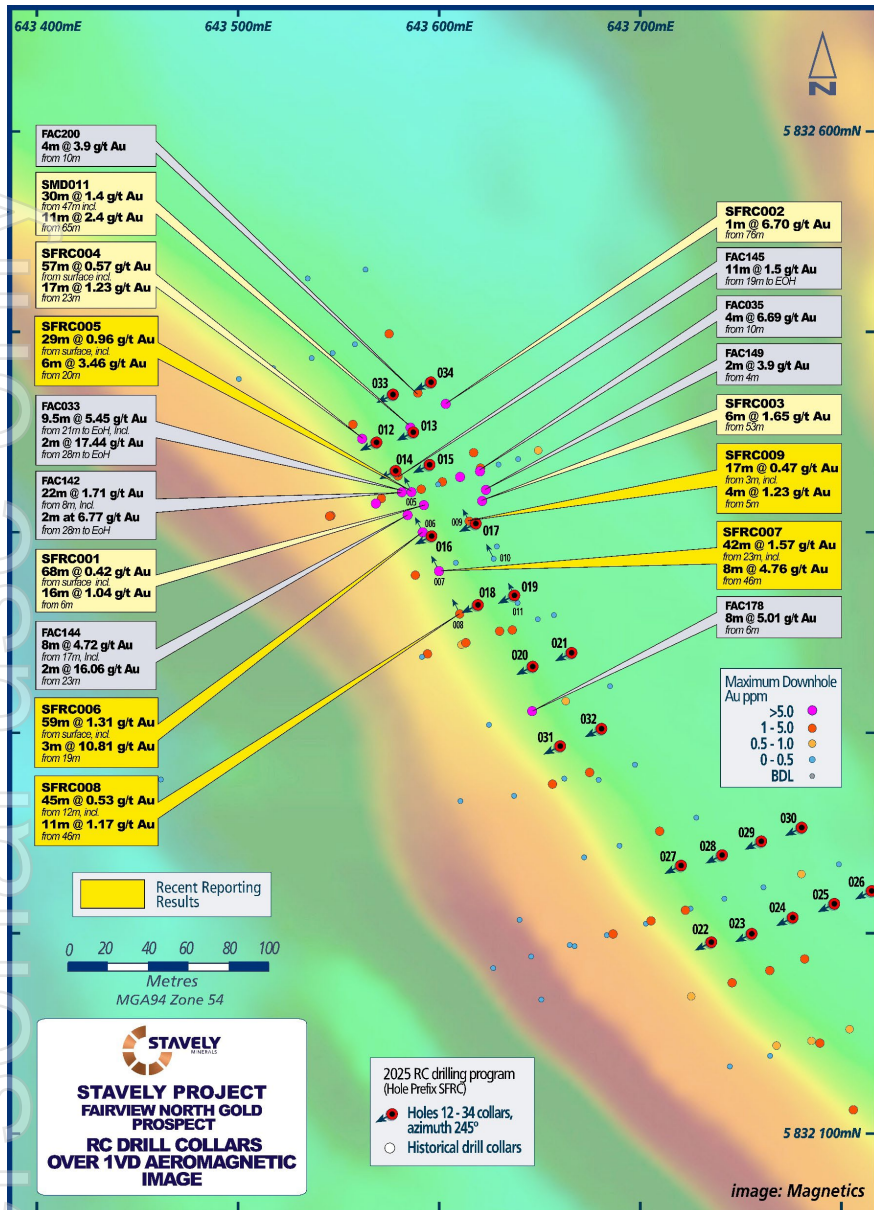
## Only flexure 'A' tested in Phase 1 RC drilling.

## Phase 2 RC drilling will test:

- Flexure 'A' now ready for extensional drilling
- RC drill test flexures 'B' and 'C'
- To be done: Aircore drill NW and SE extensions to identify additional flexures

See ASX:SVY announcement 22 May 2025

# Gold Discovery Opportunities – Fairview North



## Attractive gold target:

- Favourable NW 'kink' in the Fairview trend
- Same fertile orientation as the Cayley Lode
- Magnetics indicate it is located on the contact between sandstone and diorite intrusion – competency contrast

## Only flexure 'A' tested in Phase 1 RC drilling. Phase 2, 23 RC drill holes completed, assays pending:

- Flexure 'A' now ready for extensional drilling - **done**
- RC drill test flexures 'B' and 'C' - **done**

- To be done: Aircore drill NW and SE extensions to identify additional flexures

See ASX:SVY announcement 12 September 2025

# Fairview North Bottle Roll and Column Leach Test Results



## Bottle Roll Cyanide Leach Test

Sample ID	Test No.	% Au Extraction @ Hours							Calc'd Head Au (g/t)	Consumption (kg/t)		
		2	4	8	24	48	72	96		120	NaCN	Lime
SFGDM01	LT1	24.7	55.2	73.3	96.3	97.2	98.2	98.3	98.4	1.83	0.76	0.17
SFGDM02	LT2	7.0	16.8	26.7	54.7	65.0	68.4	73.2	72.6	0.55	1.74	1.77
SFGDM03	LT3	12.7	33.2	47.5	75.1	82.2	88.1	92.4	92.4	1.77	1.21	0.50

## Column Leach Test

Sample ID	Test No.	% Au Extraction @ Days									Calc'd Head Au (g/t)	Consumption (kg/t)	
		1	2	5	10	15	20	30	37	Final		NaCN	Cement
SFGDM01	LT1	24.3	57.0	84.1	91.3	93.3	94.3	95.5	-	95.8	1.90	0.30	10.0
SFGDM02	LT2	7.4	26.6	52.9	66.2	72.1	76.0	80.8	-	81.9	0.69	0.42	20.0
SFGDM03	LT3	11.5	34.3	60.5	72.6	77.6	80.8	84.7	86.6	87.4	1.75	0.67	10.0

## Comparison of bottle roll leach only vs. gravity plus leach

Sample	Test No	Size	Description	Au Gravity Recovery, %	Au Leach Recovery, %	Au Overall Recovery, %
SFGDM01	LT1	As Received	Leach Only	-	98.4	98.4
SFGDM02	LT2	As Received	Leach Only	-	72.6	72.6
SFGDM02	LT4	-1.7 mm	Gravity+ Leach	9.69	75.3	85.0
SFGDM03	LT3	As Received	Leach Only	-	92.4	92.4
SFGDM03	LT5	-1.7 mm	Gravity+ Leach	21.5	73.8	95.3

**Very good leach results<sup>1</sup> - amenable to low-cost heap leach gold extraction:**

- Up to +96% gold recovery after 24 hours in bottle roll testing
- Up to +90% gold recovery after 10 days in column leach tests
- Gravity plus leach test recoveries up to 95.3%
- Testwork concludes **+80% gold recoveries could be expected** in low-cost heap leach extraction

<sup>1</sup> See ASX:SVY announcement dated 17 July 2025 and ALS Metallurgy Test Report under the Technical Data tab on [www.stavely.com.au](http://www.stavely.com.au)

ersonal use only

# Fairview South

# Gold Discovery Opportunities – Fairview South



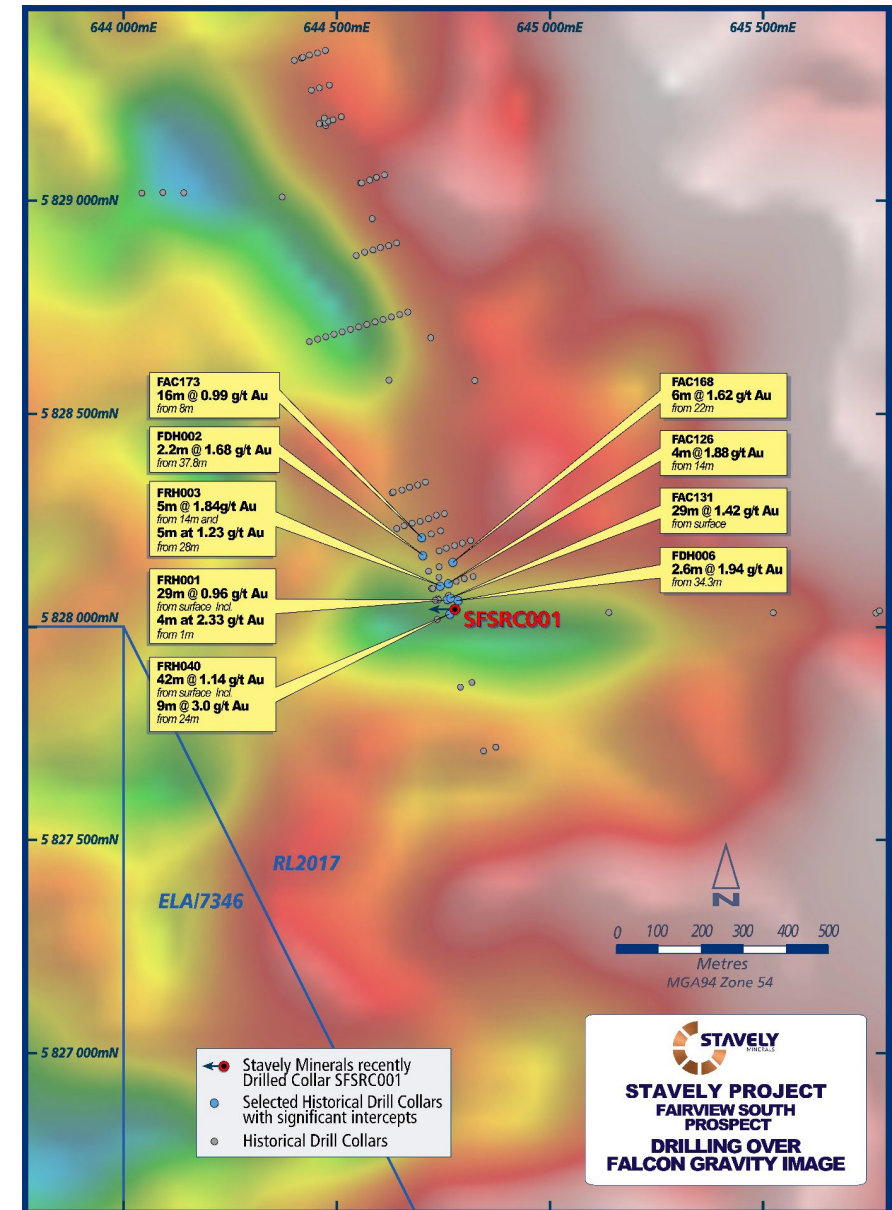
## Previous explorer drill results<sup>1</sup>:

- FRH040 – 42m at 1.14g/t Au from surface, including 9m at 3.00g/t Au from 24m
- FAC131 – 29m at 1.42g/t Au from 6m
- FRH003 - 5m at 1.84g/t Au from 14m, and 5m at 1.23g/t Au from 28m
- FAC168 – 6m at 1.62g/t Au from 22m
- FAC126 – 4m at 1.88g/t Au from 14m
- FDH006 – 2.6m at 1.94g/t Au from 34.3m
- FRH001 – 29m at 0.96g/t Au from surface, including 4m at 2.33g/t Au from 1m
- FAC173 – 16m at 0.99g/t Au from 8m

Drilled by Beaconsfield Gold up to 1 month before the Beaconsfield Mine disaster, no further work after.

Located on a major WNW structure and proximal to a gravity low – interpreted to be a rhyolite intrusion.

<sup>1</sup>See Stavely Minerals Prospectus April 2014

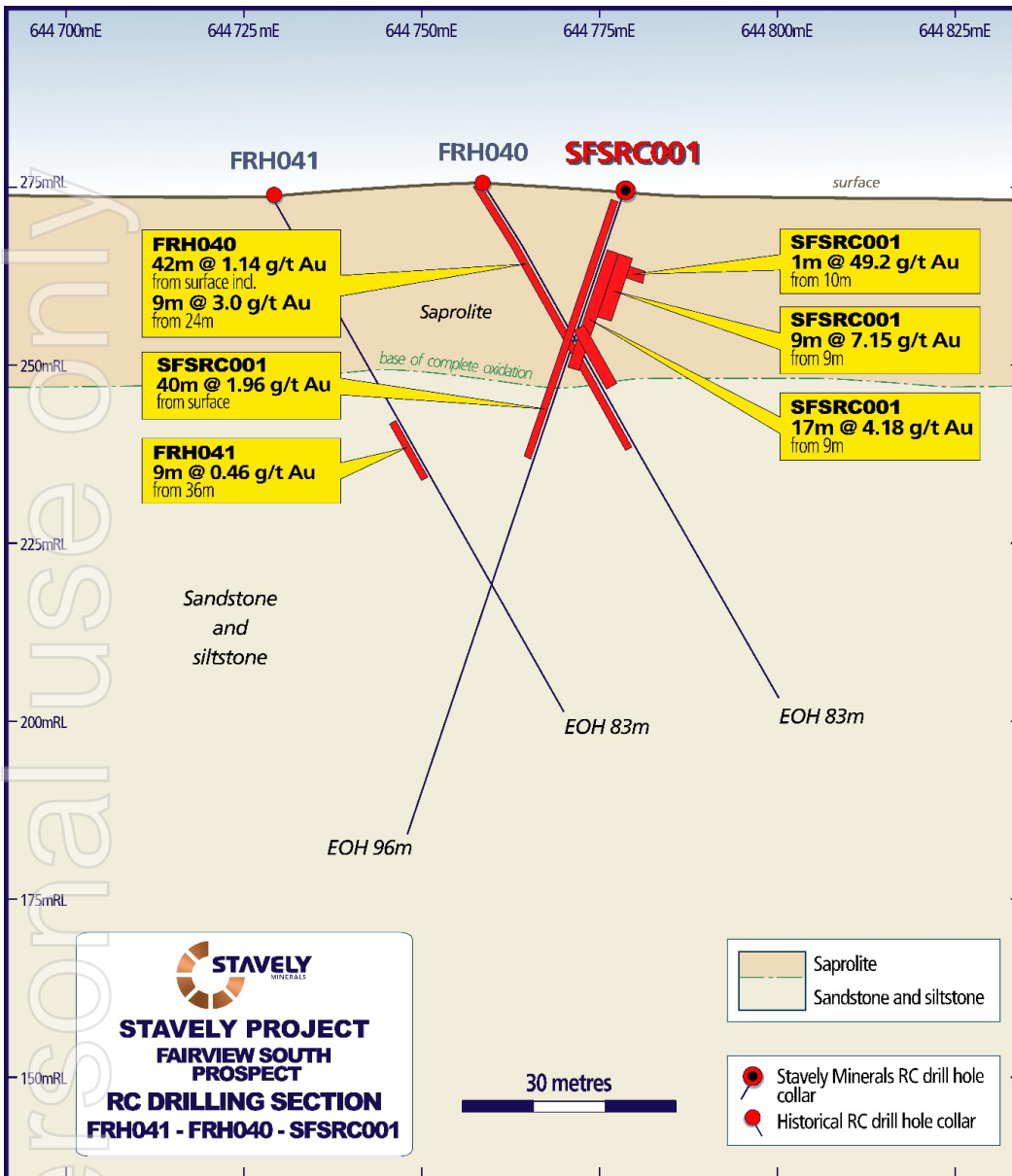


# Fairview South Recent RC drill Results

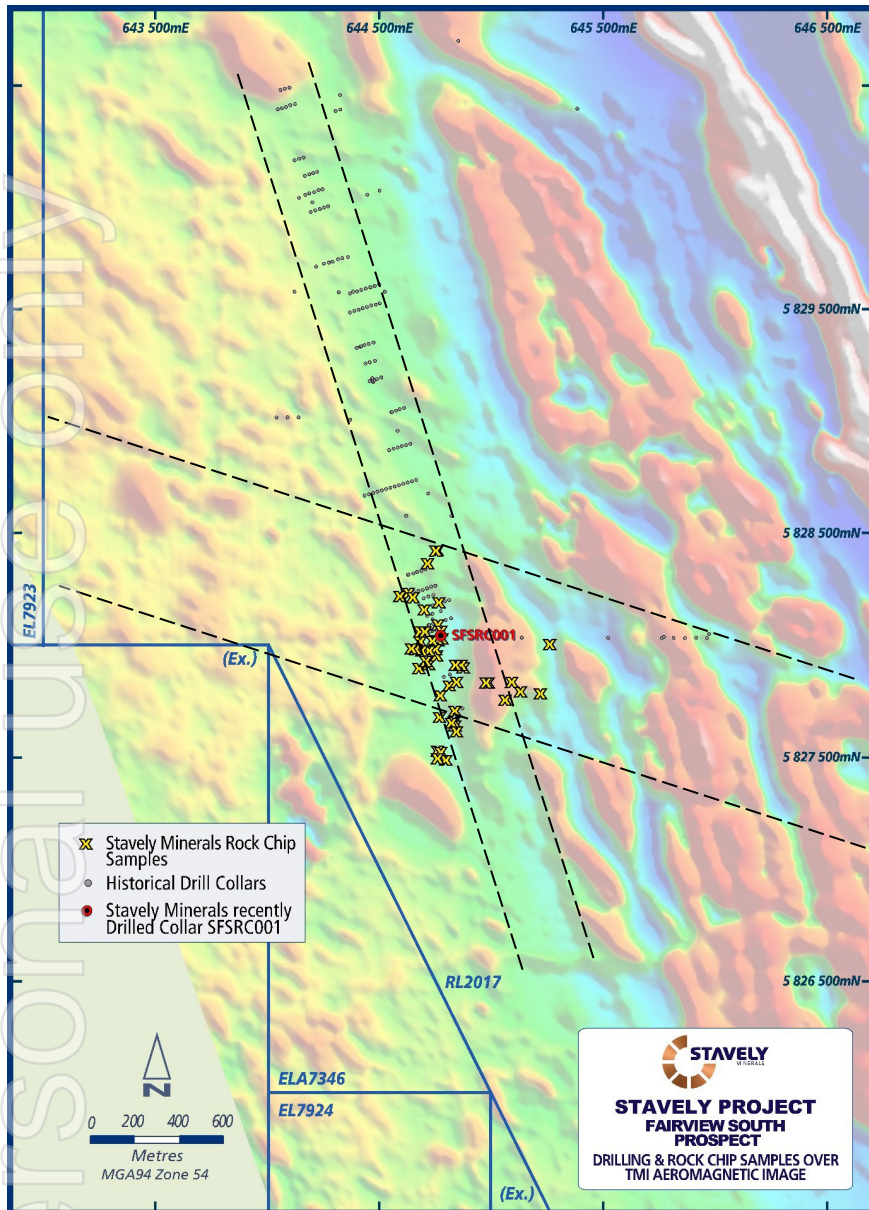


## Fairview South Gold Prospect

- 40m at 1.96g/t gold from surface including:
  - 17m at 4.18g/t gold from 9m down-hole, including<sup>1</sup>:
    - 9m @ 7.15g/t gold from 9m down-hole, including:
      - 1m at 49.2g/t gold from 10m down-hole.



<sup>1</sup>See ASX:SVY announcement 14 July 2025



## Fairview South Gold Prospect

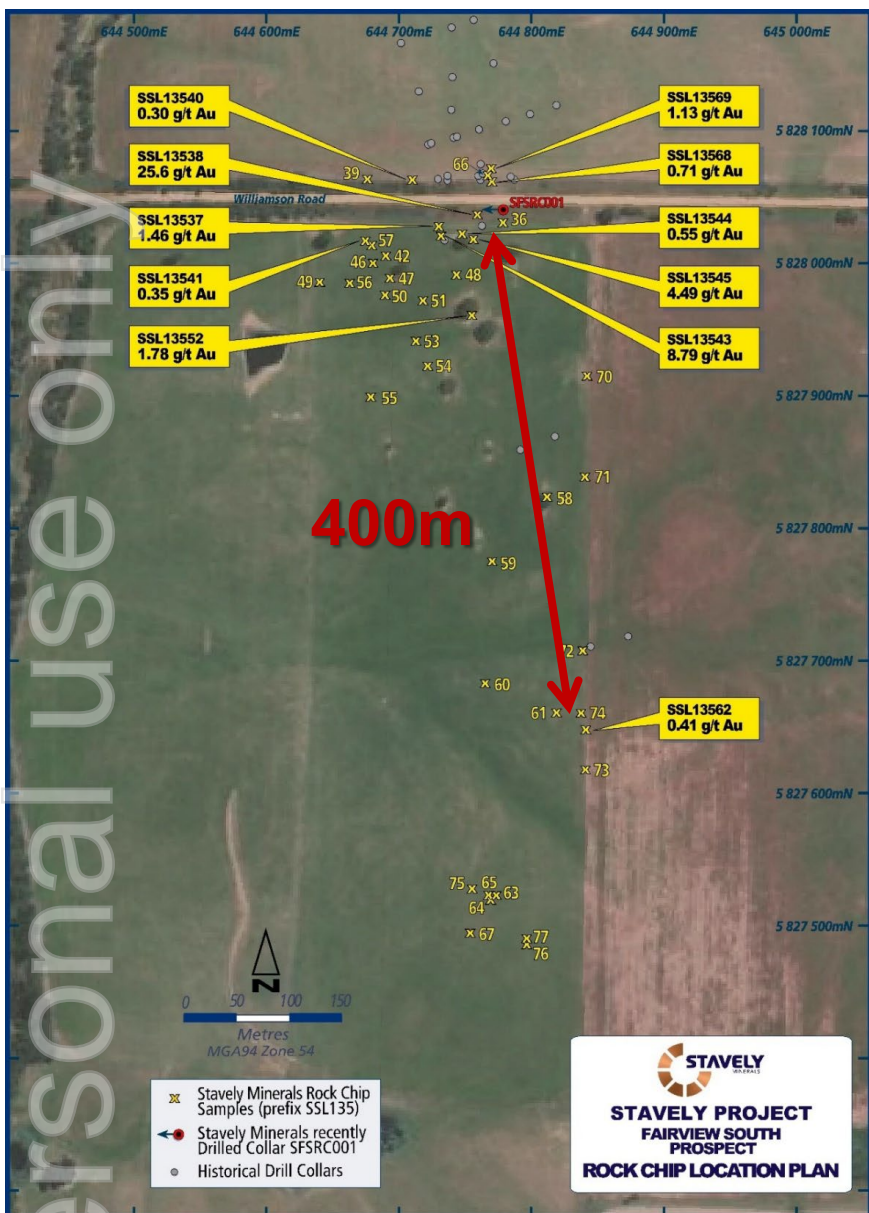
- At the intersection of ~NS and WNW structures
- Associated with logged intermediate and felsic intrusive dykes
- A single RC drill hole (SFSRC001) recently drilled to confirm gold mineralisation location – **40m @ 1.96g/t gold**
- Abundant gossanous float material sampled in the paddock – plus 400m extension to the south

# Fairview South Recent Rock Chip Results



## Fairview South Gold Prospect Reconnaissance Rock Chips

- **25.60g/t gold** - gossan w/ boxworks hosted in siltstone
- **8.79g/t gold** - brecciated quartz vein and gossan w/ boxworks in altered felsic volcanic – ?rhyolite
- **4.49g/t gold** - brecciated quartz vein and gossan w/ boxworks in altered siltstone
- **1.78g/t gold** - a collection of quartz vein and gossan fragments
- **1.46g/t gold** - gossan w/ boxworks in altered siltstone
- **1.13g/t gold** - quartz veined ferruginous felsic volcanic ?rhyolite
- A further eight float rock-chip samples returned anomalous assays +0.1g/t gold
- Gold mineralisation extends +400m south of SFSRC001



# Fairview South Recent RC drill Results



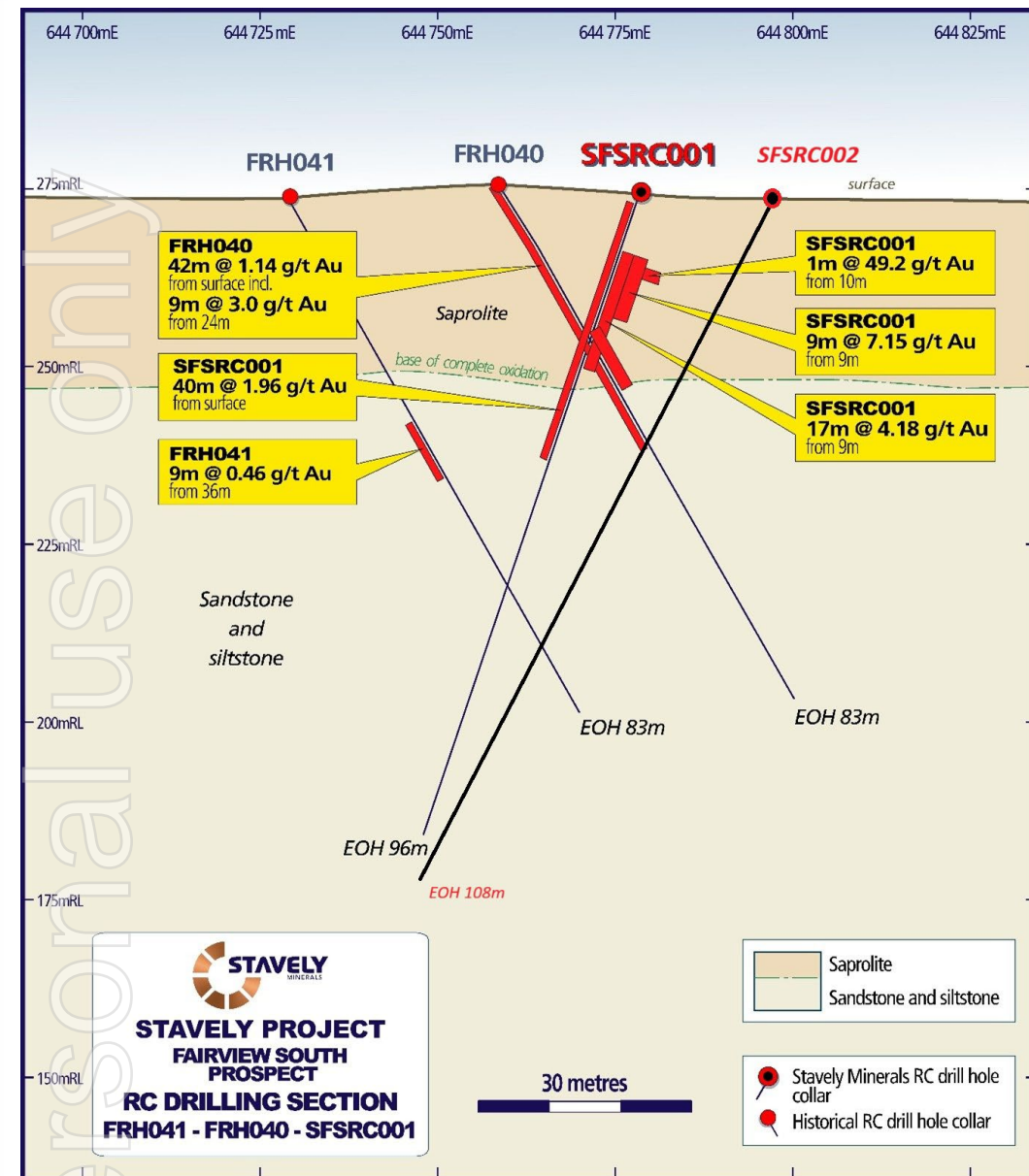
## Fairview South Gold Prospect Phase 1 RC drill hole SFSRC001<sup>1</sup>:

- 40m at 1.96g/t gold from surface including:
  - 17m at 4.18g/t gold from 9m down-hole, including:
    - 9m @ 7.15g/t gold from 9m down-hole, including:
      - 1m at 49.2g/t gold from 10m down-hole.

A second Phase 2 RC drill hole (SFSRC002) has been completed<sup>2</sup>

<sup>1</sup>See ASX:SVY announcement 14 July 2025

<sup>2</sup>See ASX:SVY announcement 12 September 2025

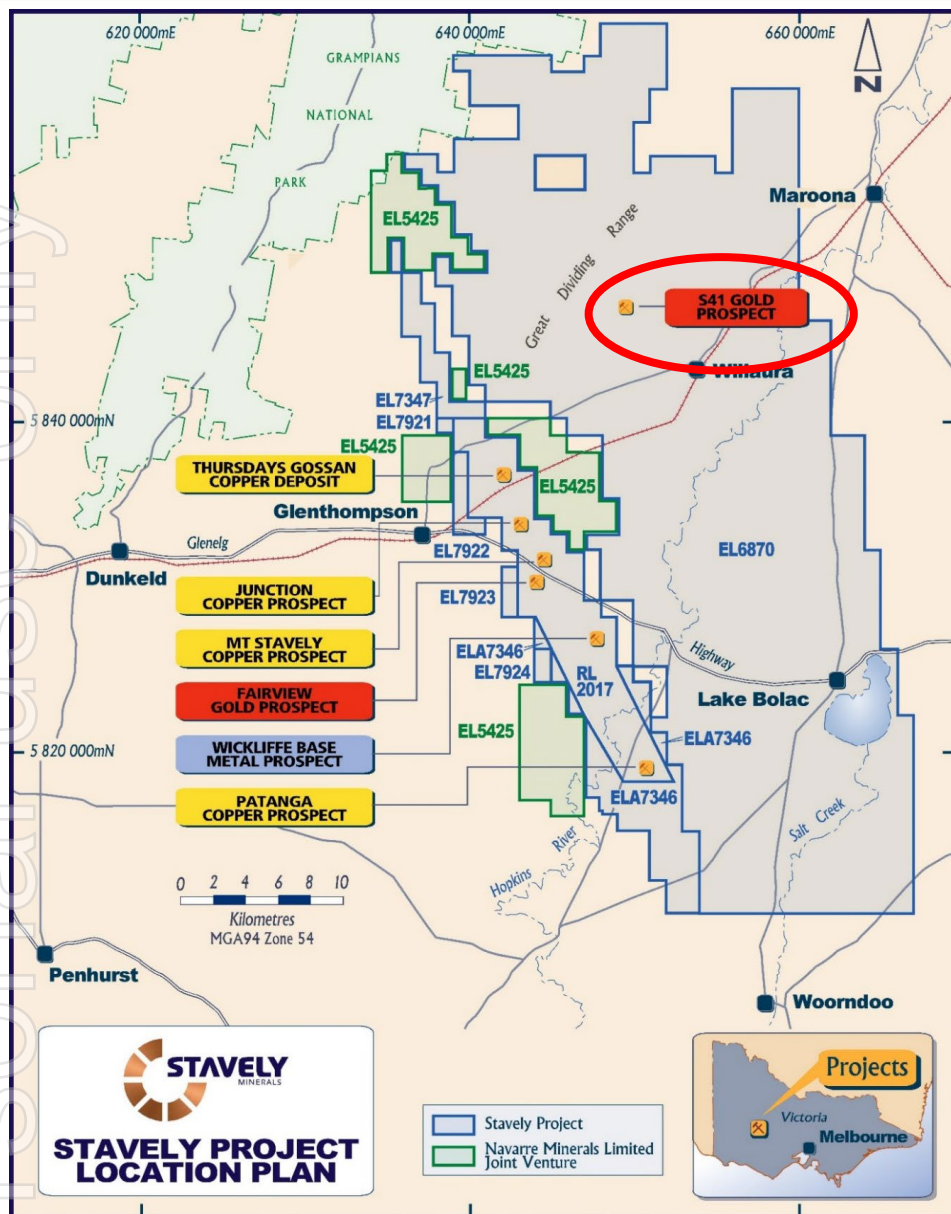


ersonal use only

# S41 Breccia-Hosted Gold Target

(full technical presentation from AIG Victorian Round-Up available on [www.stavely.com.au](http://www.stavely.com.au))

# Emerging Discovery? – The S41 Breccia Prospect



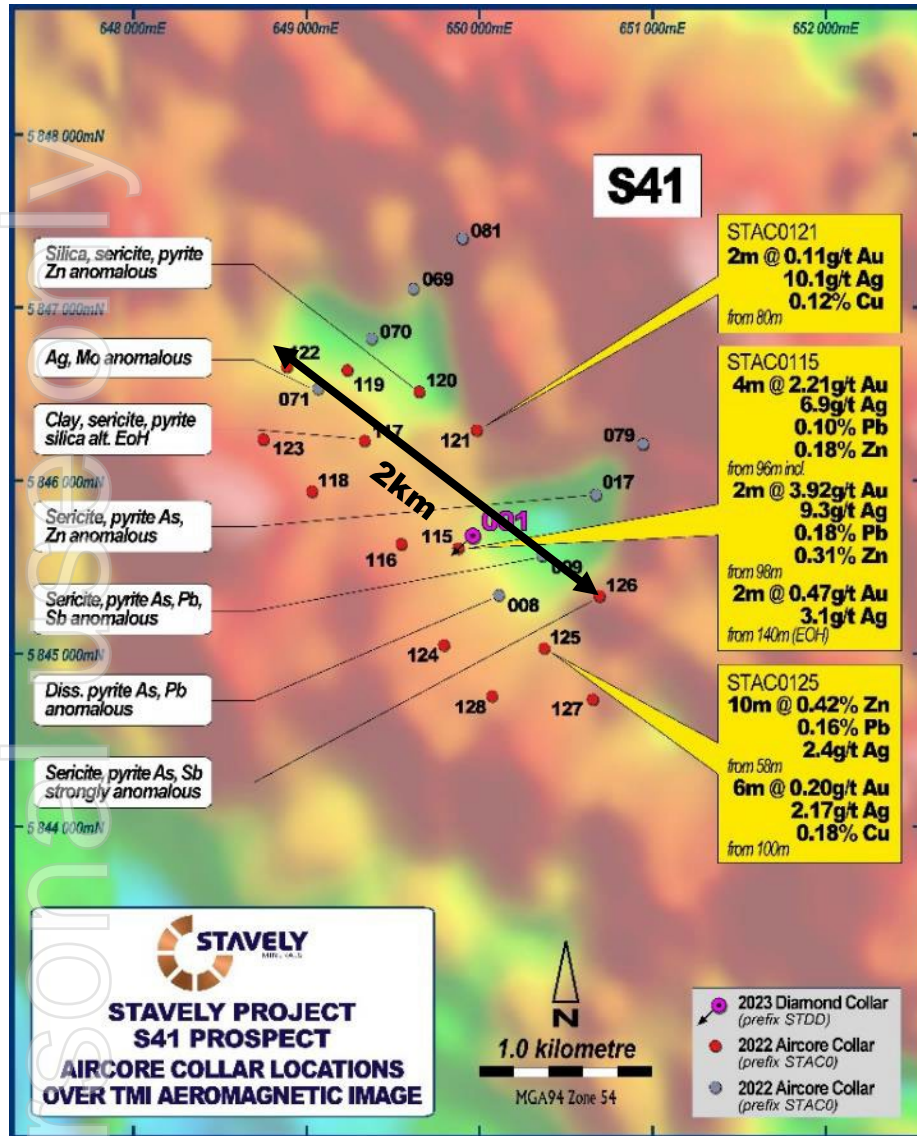
## S41 Breccia-Hosted Gold Prospect

- Identified in Stavely Minerals' Falcon Gravity Gradiometer<sup>®</sup> survey under 50m of basalt
- We are the first to see this gold mineralized system:
  - Identified the geophysical anomaly
  - Drilled through the basalt to discover the gold-base metal anomaly
  - Diamond drilled it and identified the style of system it is: carbonate – base metal – gold
  - Well studied style of gold deposit
- Scale potential for discovery

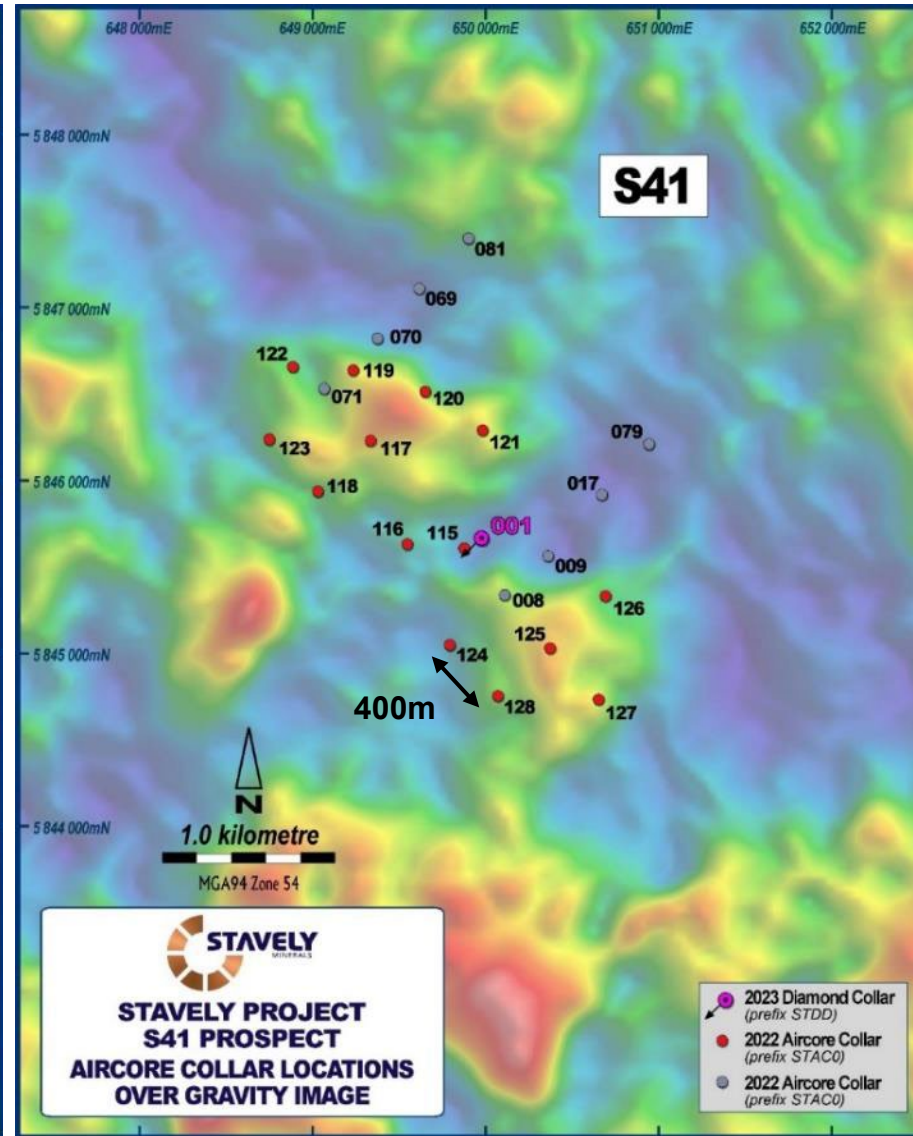
# Emerging Discovery? – The S41 Breccia-Hosted Gold Prospect



Magnetics



Gravity

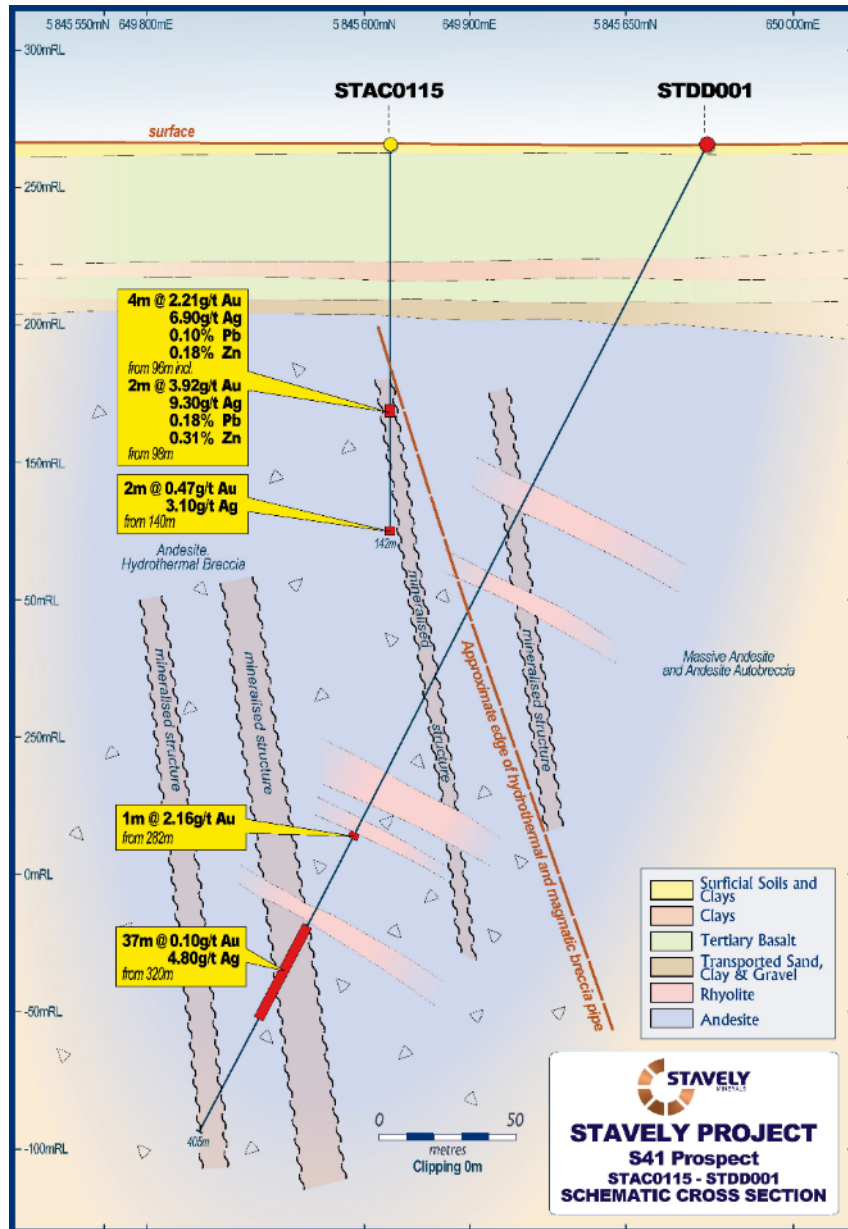


## S41 Prospect Aircore<sup>1</sup>

- **4m at 2.21g/t Au** from 96m drill depth, including:
- **2m at 3.92g/t Au** from 98m in aircore drilling
- Large 2km alteration zone
- Strongly anomalous base metals and pathfinder geochemistry

<sup>1</sup>See ASX announcement 19/04/2023

# The S41 Breccia Prospect – first look STDD001



## S41 Diamond Drill Hole<sup>1</sup>

- Only one diamond drill hole in the 2,000m x 750m interpreted breccia system
- **1m at 2.16g/t Au** from 282m drill depth
- **37m at 0.10g/t Au**, including:
  - **2m at 0.56g/t Au** from 320m, and
  - **5m at 24.3g/t Ag** from 353m
- Importantly demonstrated that there is gold and silver in the system associated with Mn-carbonate and Zn & Pb base metals
- Breccia-hosted systems host notoriously inconsistent gold mineralization eg. Kidston
- Need to find the better plumbing on the edge

<sup>1</sup>See ASX announcement 26/04/2023

# Breccia-hosted Carbonate – Base Metal – Gold Systems



## Low sulphidation mineralisation style

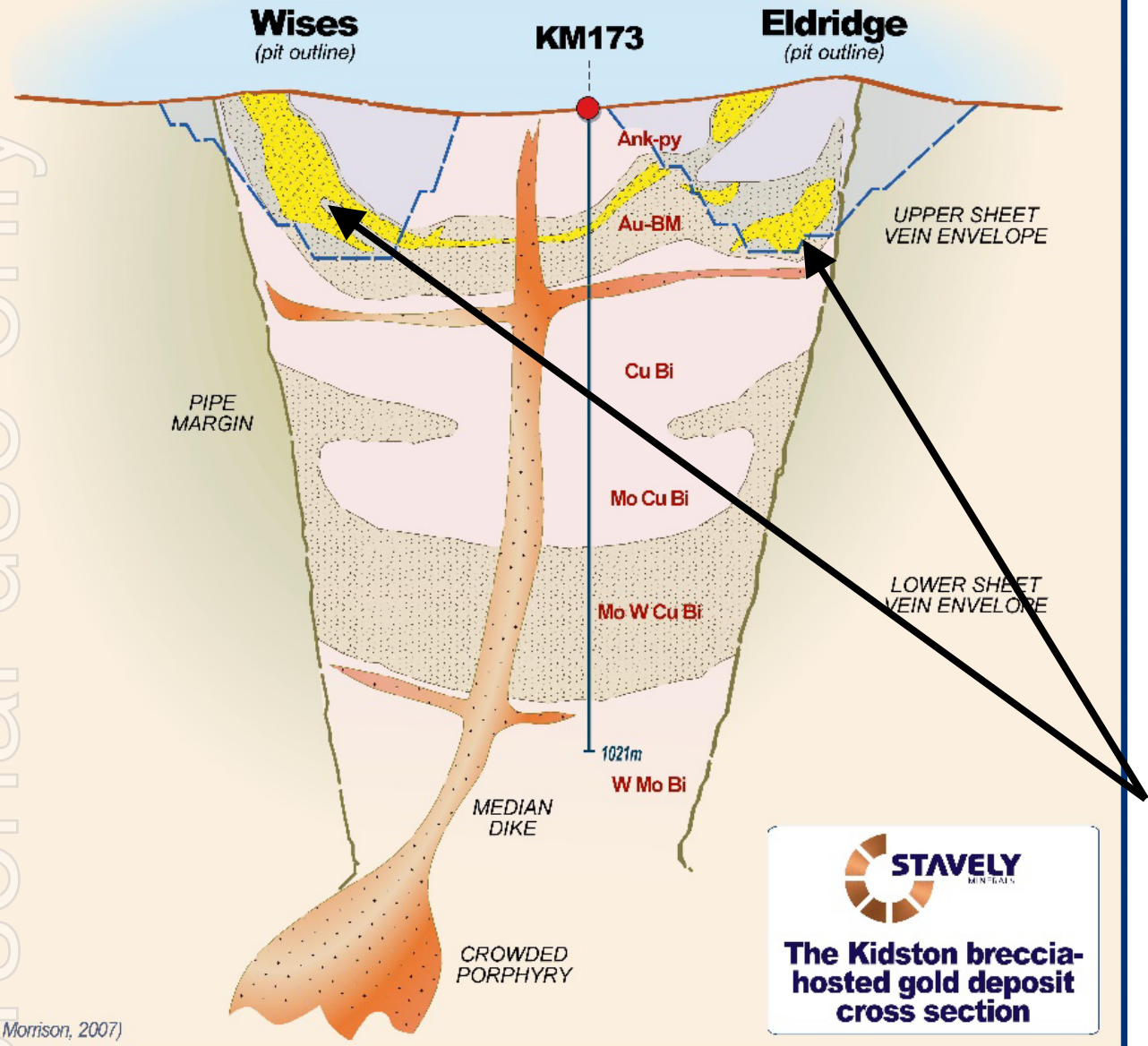
Depth	quartz-sulphide Au ± Cu	carbonate-basemetal Au			epithermal quartz Au
Shallow	opal, chalcedony marcasite ✓	<u>Sphalerite</u> Fe-poor	<u>Ag sulphosalts</u> acanthite	<u>Carbonate</u> siderite FeCO <sub>3</sub>	
	pyrite quartz	<div style="display: flex; justify-content: space-between; align-items: center;"> <div style="text-align: center;"> <p>white ✓</p> <p>yellow</p> <p>red</p> </div> <div style="text-align: center;"> <p>+ galena</p> <p>→</p> </div> <div style="text-align: center;"> <p>argentite</p> <p>→</p> </div> <div style="text-align: center;"> <p>rhodochrosite MnCO<sub>3</sub> ✓</p> <p>kutnahorite Ca (MgMgFe)(CO<sub>3</sub>)<sub>2</sub></p> <p>ankerite CaCO<sub>3</sub>(MgFe)CO<sub>3</sub> ✓</p> </div> <div style="text-align: center;"> <p>→</p> </div> </div>			quartz
					high fineness free Au
Deep	chalcopyrite, pyrrhotite specularite	brown	tennantite tetrahedrite	dolomite CaCO <sub>3</sub> .MgCO <sub>3</sub>	Te minerals hessites tellurobismuthenite
		black		Mg calcite	
		Fe-rich		calcite CaCO <sub>3</sub>	

CORBETT ai1851

**'goldilocks' gold precipitation zone**

With kind permission from Greg Corbett

# Emerging Discovery? – The S41 Breccia-Hosted Gold Prospect



Personal use only

(after G. Morrison, 2007)

## S41 Diamond Drill Hole<sup>1</sup>

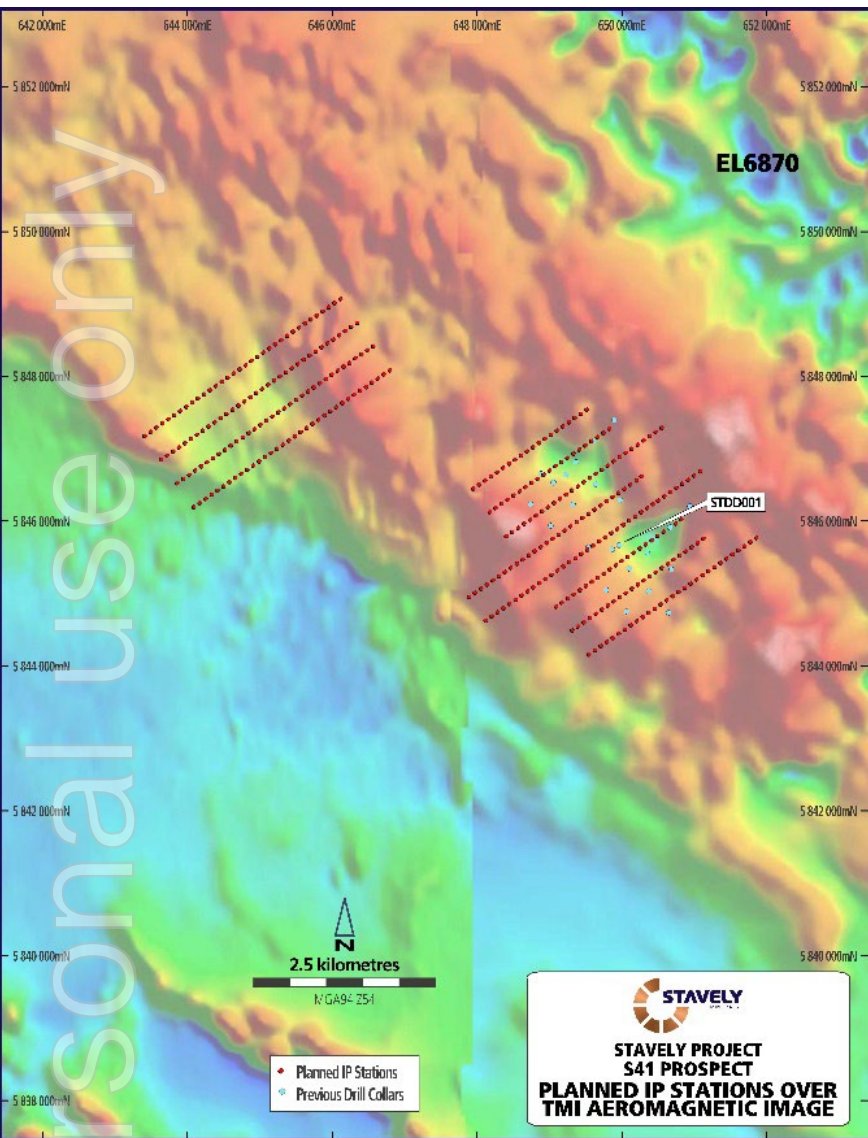
- Only one diamond drill hole in the 2,000m x 750m interpreted breccia system
- **1m at 2.16g/t Au** from 282m drill depth
- **37m at 0.10g/t Au**, including:
  - **2m at 0.56g/t Au** from 320m, and
  - **5m at 24.3g/t Ag** from 353m
- Importantly demonstrated that there is gold and silver in the system associated with Mn-carbonate and Zn & Pb base metals
- Breccia-hosted systems host notoriously inconsistent gold mineralization eg. Kidston
- Potential for scale

<sup>1</sup>See ASX announcement 26/04/2023

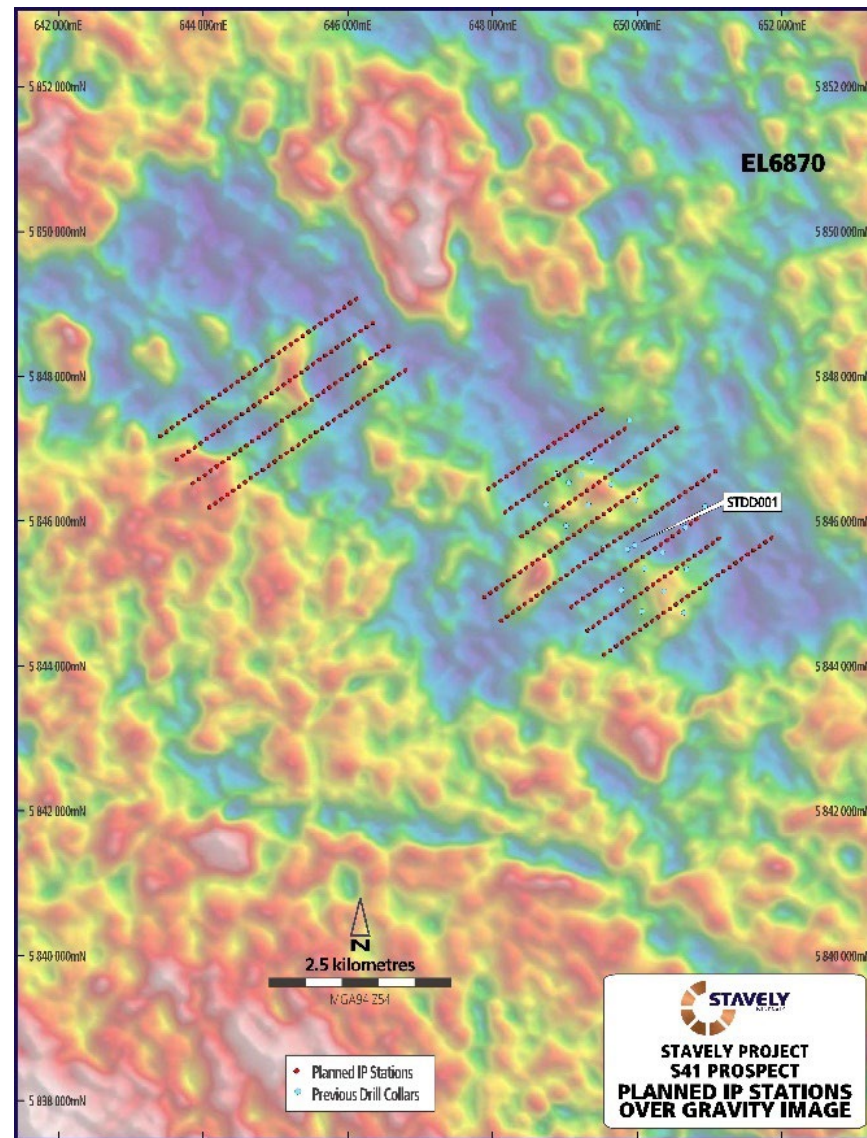
# The S41 Breccia-Hosted Gold Prospect – Map out sulphides with IP



## Magnetics



## Gravity



## S41 Prospect Geophysics<sup>1</sup>

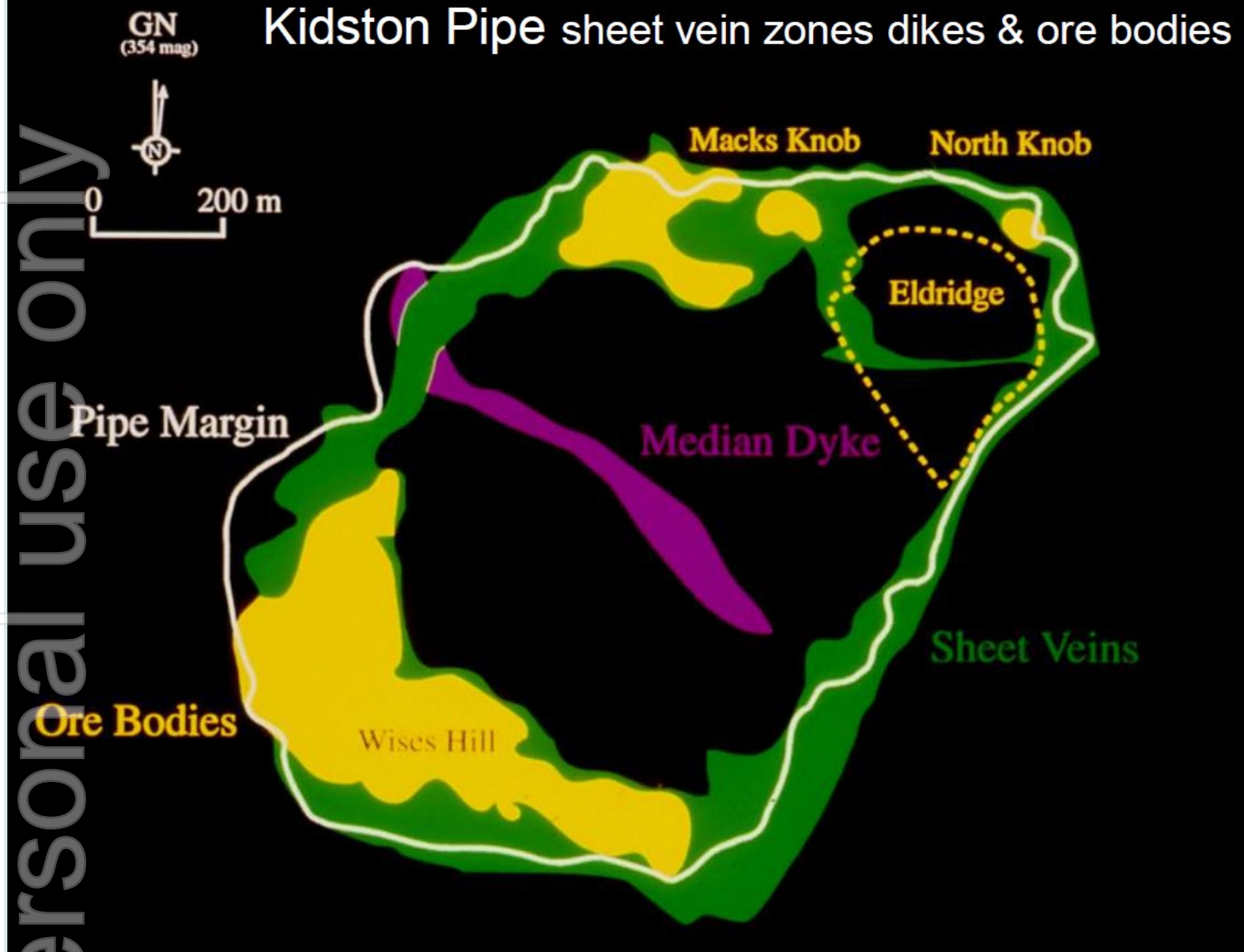
- Proposed Induced Polarisation (IP) geophysical program
- Should 'see' through the basalt and identify zones of better developed sulphide mineralisation
- Follow-up aircore drilling and then, based on results, likely diamond drilling – including extending STDD001

<sup>1</sup>See ASX announcement 21/01/2025

# Kidston Breccia Pipe Outline and Sheeted Vein Mineralisation



Kidston Pipe sheet vein zones dikes & ore bodies

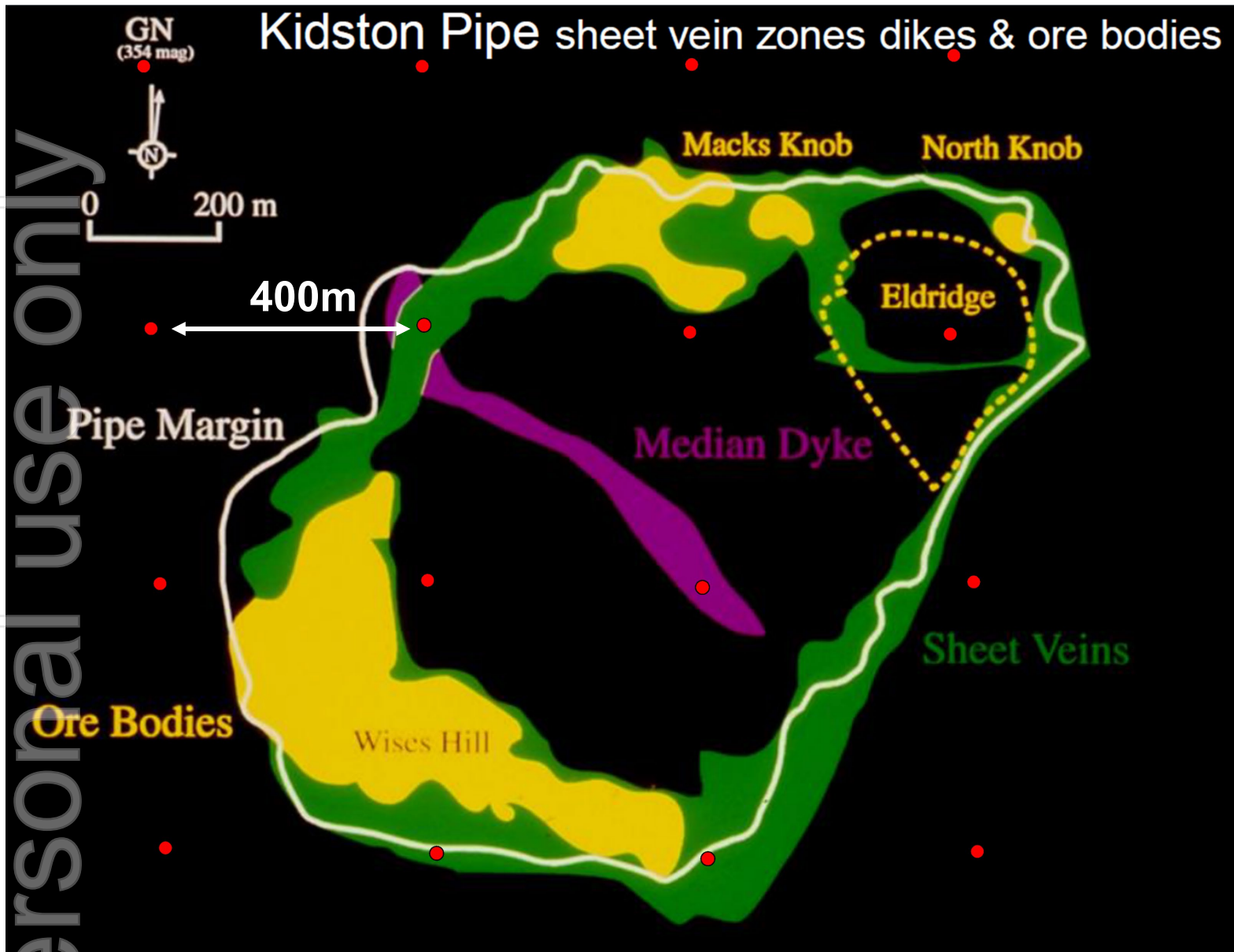


## Kidston

- Gold mineralisation hosted in peripheral sheeted veins

ersonal use only

# Kidston with 400m-spaced drill holes



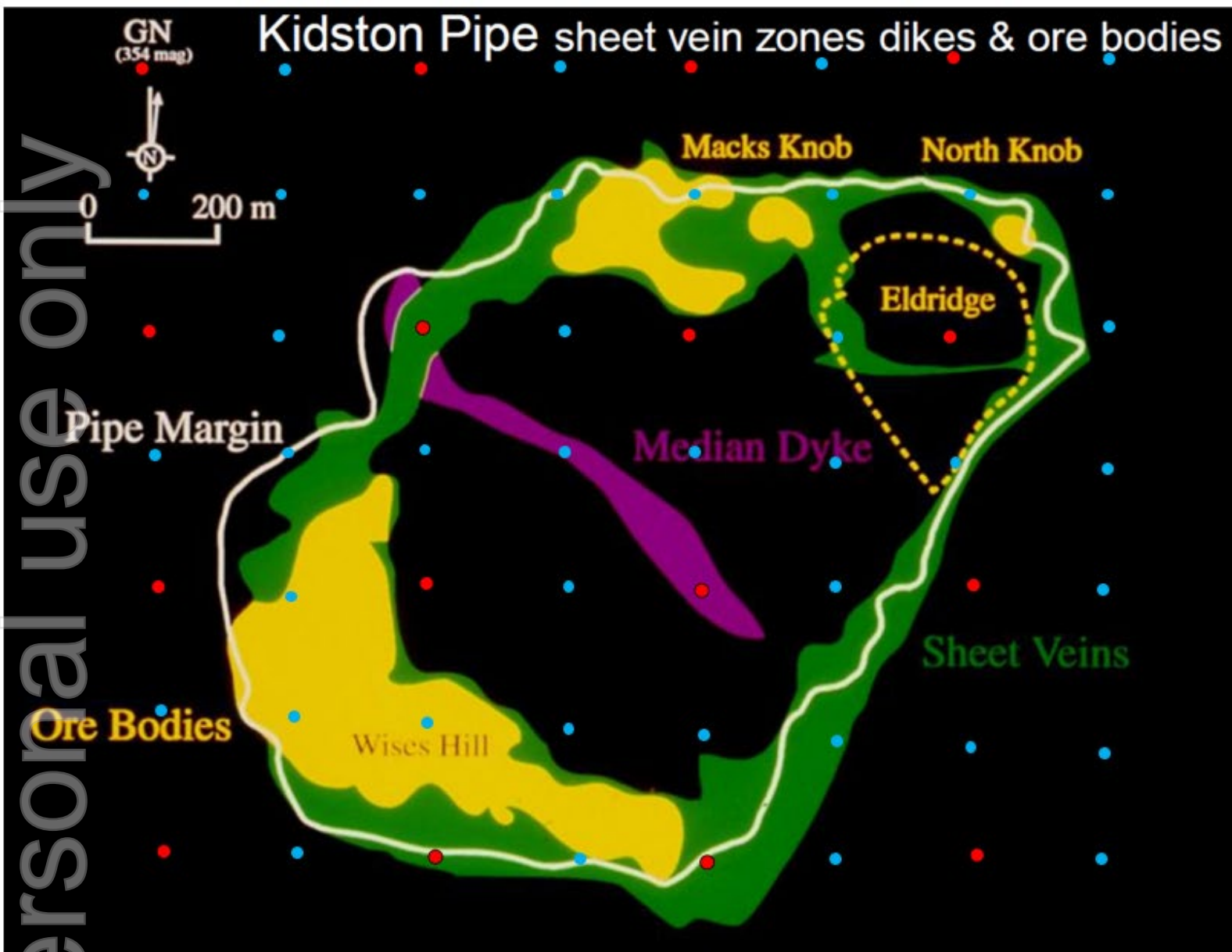
## Kidston

- Gold mineralisation hosted in peripheral sheeted veins
- Conceptual 400m-spaced aircore drill spacing similar to the existing spacing at S41

# Kidston with 200m-spaced drill holes



ersonal use only



## Kidston

- Proposed 200m-spaced aircore drill infill

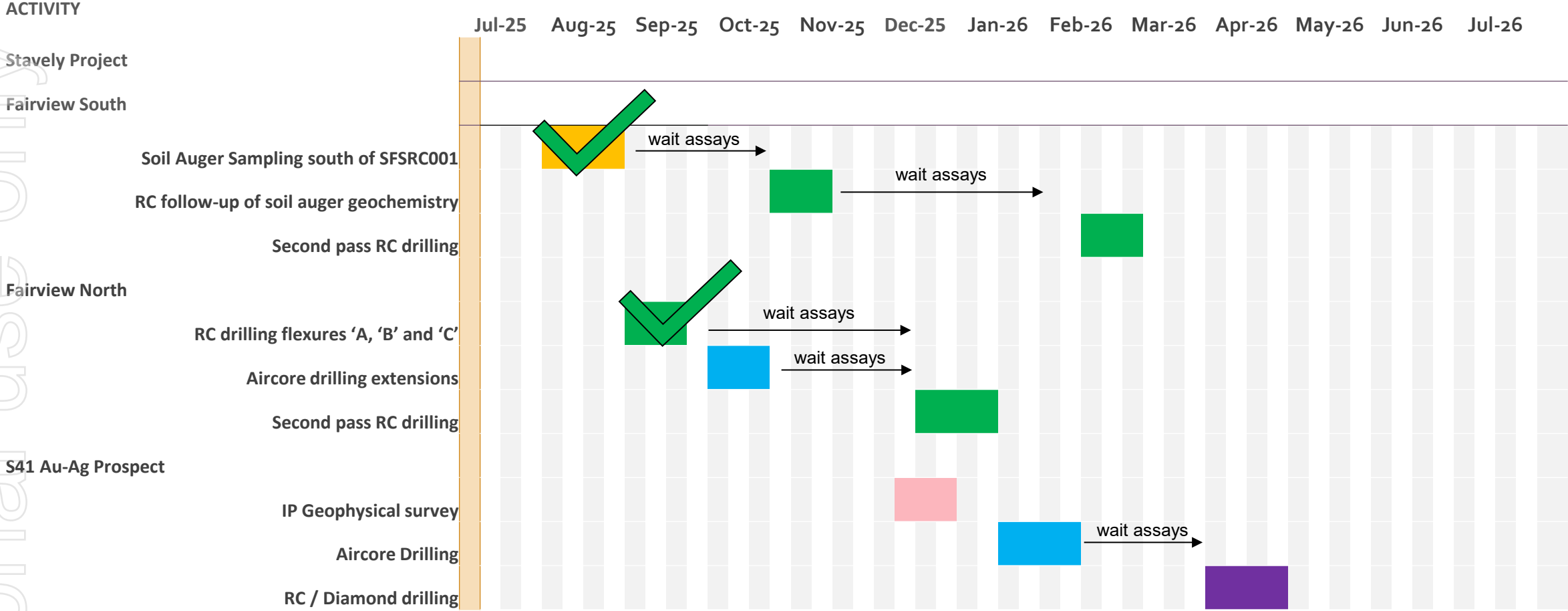
Red = 400m spaced aircore

Blue = 200m spaced aircore

# 9-month Work Programme – Drilling Intensive



Personal use only



# Corporate Summary



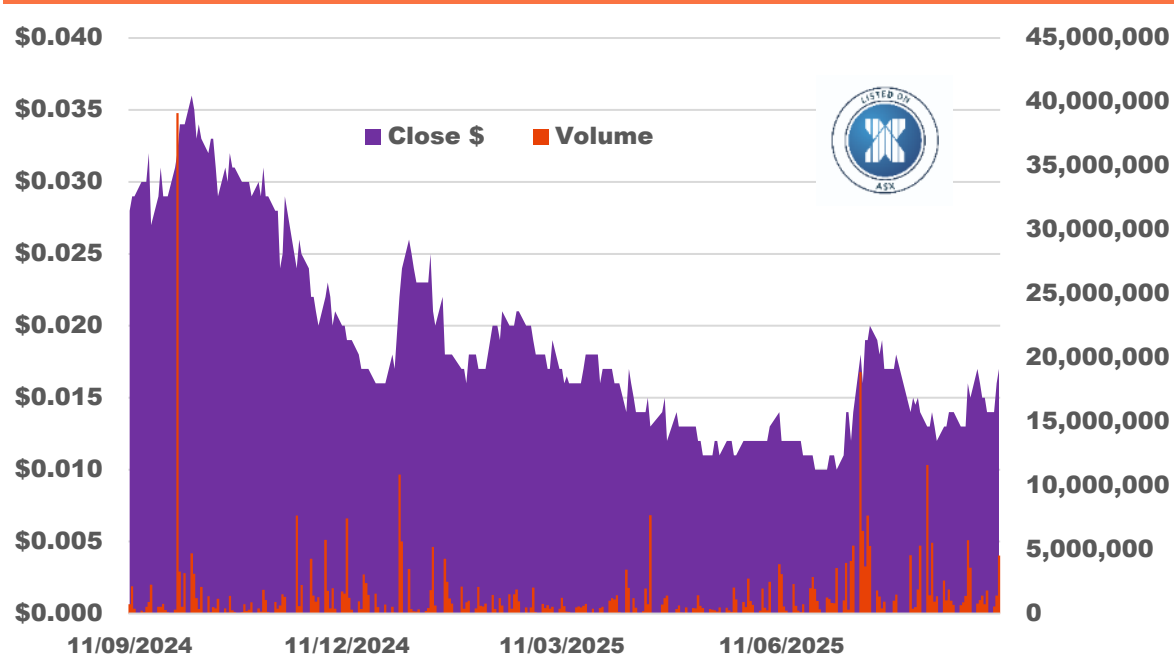
## CAPITAL STRUCTURE

ASX Ticker	SVY
Share Price (11/09/25)	\$0.016
Shares on Issue	680M <sup>1</sup>
Cash (30/06/25)	\$1.2M <sup>2</sup>
Market Capitalisation	\$10.9M
Management and Staff	~9% equity

## Directors

Chris Cairns	Executive Chair
Jennifer Murphy	Technical Director
Peter Ironside	Non-Executive Director
Amanda Sparks	Non-Executive Director & Company Secretary
Rob Dennis	Non-Executive Director

## 12-month Share Price to 11 September 2025



<sup>1</sup>does not include 5,000,000 Directors' subscription shares subject to shareholder approval at this General Meeting

<sup>2</sup>subsequent capital raising of \$1.9m, see ASX:SVY announcement 4 August 2025

# Summary – Key Investment Takeaways



- ✓ The Cayley Lode is a quality, high-grade copper-gold-silver Mineral Resource from surface
- ✓ Renewed focus on gold targets, we control ~130km strike of fertile volcanic belt:
  - ✓ *Fairview North and South gold prospects; two priority targets to be drill defined*
  - ✓ *S41 breccia-hosted gold opportunity – scale potential with only 1 diamond drill hole to date*
- ✓ Junction copper-silver (aircore drilling impressive assays) – **gaining access a priority**
- ✓ Junction porphyry target – only 200m east of Junction high-grade copper-silver, again access a priority
- ✓ BIG targets



Cayley Lode bornite mineralisation - photo from ASX announcement 11 September 2019





## Investor Webinar Stavely Minerals – Gold Discovery Opportunities in the Stavely Volcanic Belt

<https://www.stavely.com.au/investors/media/>

ersonal use only



# STAVELY

MINERALS

ASX Code: SVY

**Contact Us:**  
**Stavely Minerals Limited**  
Level 1, 168 Stirling Highway  
Nedlands WA 6009  
[www.stavely.com.au](http://www.stavely.com.au)  
[info@stavely.com.au](mailto:info@stavely.com.au)  
Ph: 08 9287 7630

The information in this presentation is extracted from information available to view on [www.stavely.com.au](http://www.stavely.com.au). The Company confirms that it is not aware of any new information or data that materially affects the information included in the original market announcement and, in the case of estimates of Mineral Resources or Ore Reserves, that all material assumptions and technical parameters underpinning the estimates in the relevant market announcement continue to apply and have not materially changed. The Company confirms that the form and context in which the Competent Person's findings are presented have not been materially modified from the original market announcement.

ersonal use only



# Appendix 1: Mineral Resources

ersonal use only

# Appendix 1: Mineral Resources Classifications



Table 1. Cayley Lode Initial Mineral Resource estimate

Resource Material	Resource Category	Cut-off	Tonnes (Mt)	Grade	Cont.	Grade	Cont.	Grade	Cont.
		(Cu %)		(Cu %)	Cu (Mlbs)	(Au g/t)	Au (oz)	(Ag g/t)	Ag (oz)
Primary Mineralisation (OP)	Indicated	0.2	5.87	1.04	134.4	0.23	43,407	7	1,321,074
	Inferred	0.2	1.7	1.3	49	0.2	10,931	9	491,907
Sub-Total Primary OP			7.6	1.1	183	0.2	54,338	7.4	1,808,158
Primary Mineralisation (UG)	Indicated	1.0	-	-	-	-	-	-	-
	Inferred	1.0	1.7	1.8	69	0.2	10,931	6	327,938
Sub-Total Primary UG			1.7	1.8	69	0.2	10,931	6	327,938
Total Cayley Lode			9.3	1.23	252	0.23	65,000	7.1	2,100,000



Table 4. Stavely Minerals Total Mineral Resources estimates

Resource Material	Resource Category	Cut-off	Tonnes (Mt)	Grade	Cont.	Grade	Cont.	Grade	Contained Metal	Grade	Cont.
		(Cu %)		(Cu %)	(Mlbs Cu)	(Au g/t)	(oz Au)	(Ag g/t)	(oz Ag)	(Zn %)	(kt Zn)
Total Resources	Indicated	1	21.5	0.61	288	0.1	67,301	3.1	2,153,972	0.3	8
	Inferred	1	6.8	1.2	175	0.1	32,797	4.7	1,043,839	0.2	16
Total Stavely Minerals			28.3	0.75*	463	0.11*	100,000	3.5	3,200,000	0.2	24



Cayley Lode bornite mineralisation - photo from ASX announcement 11 September 2019

<sup>1</sup> Reported in compliance with the JORC Code 2012, see ASX announcement 14 June 2022