

Heritage Agreement Executed at Forelands Gold Project

BPM Minerals Ltd (ASX: BPM) ('BPM' or 'the Company') is pleased to advise that it has executed a Heritage Agreement with the Upurli Upurli Nguratja Aboriginal Corporation (UUNAC) (the "Traditional Owners") covering exploration activities over key tenure at the Company's recently acquired **Forelands Gold Project** (the "Project").

Highlights:

- **Heritage Agreement signed with UUNAC, establishing clear protocols for cultural heritage management and engagement over key tenure at the Forelands Gold Project.**
- **Heritage survey currently being scheduled and anticipated to commence Q4 2025.**
- **Maiden RC program at Beachcomber anticipated to immediately following survey completion.**
- **Program of Work (PoW) approved by DMPE paving the way for a 3,000m, 25-hole RC drilling program at the priority Beachcomber Prospect.**
- **Beachcomber represents a near-term drill focus with stacked, high grade gold bearing quartz lodes open in all directions on granted tenure.**
- **Recent sale of BPM's shares in Capricorn Metals Ltd. (ASX:CMM) delivers ~\$1.05m cash, strengthening BPM's balance sheet and is well funded to drill.**

Commenting on the progress, BPM CEO Oliver Judd:

"Finalising the Heritage Agreement with UUNAC is a key milestone that allows exploration programs to commence in a culturally responsible manner, working alongside the Upurli Upurli Nguratja community.

With a heritage survey imminent and PoW approval for RC drilling from DMPE in hand, we're anticipating the commencement of the maiden Beachcomber drilling program in the coming months.

We express our sincere thanks to UUNAC for their partnership in this agreement and look forward to working closely together as we advance exploration at Forelands."

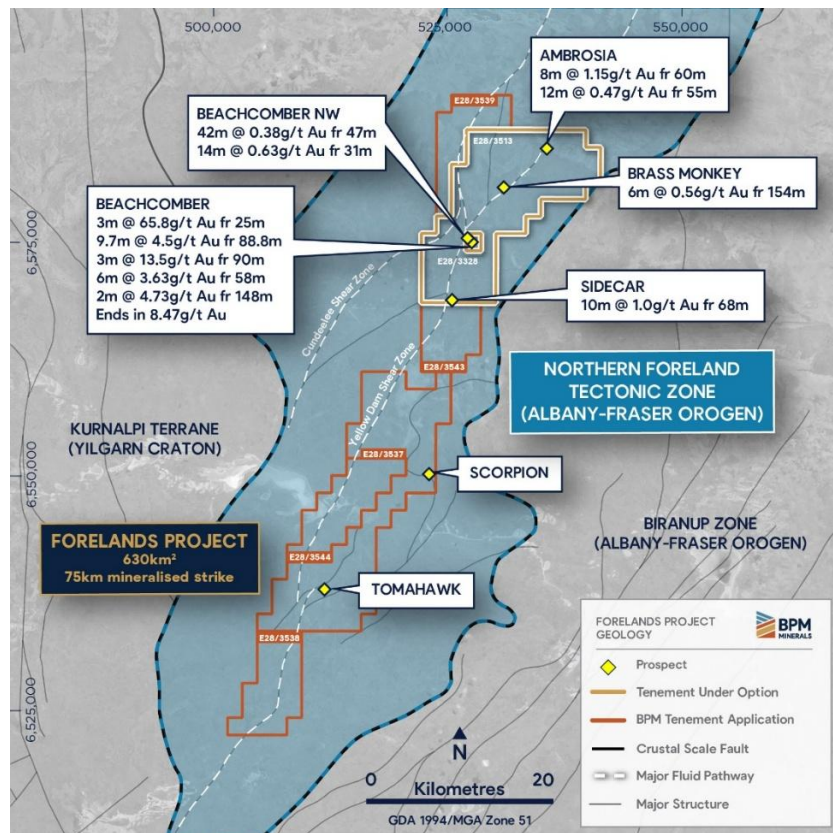


Figure 1 - Forelands Project and Prospects

Foreland Gold Project Snapshot

District-scale position: ~630 km² consolidated landholding along the Yilgarn Craton–Albany Fraser Orogen margin, an analogous tectonic setting to the +8 Moz Tropicana gold deposit.

Strategic location: ~150 km east of Kalgoorlie, straddling the Trans-Access Road with excellent access and proximity to multiple operating mills.

High-grade historical intercepts at Beachcomber:

- 3m @ 65.8 g/t Au from 25m (ZSAC0087)
- 9.7m @ 4.5 g/t Au from 88.8m incl. 0.5m @ 66.5 g/t Au (BCD001)
- 3m @ 13.5 g/t Au from 90m (BCRC008)
- 2m @ 4.73 g/t Au to EOH (BCRC035, hole ended in 8.47 g/t Au)

Near-term drilling: Beachcomber overlies granted tenure, with potential for rapid conversion to a maiden JORC-compliant resource and mining opportunity.

Widespread mineralisation: Over 75 km of key mineralised structure; with more than 40 holes with +1 g/t Au intercepts in basement; numerous untested auger, aircore and geophysical targets.

Regional Prospectivity: Additional advanced prospects including Ambrosia (8m @ 1.15 g/t Au), Sidecar (10m @ 1.0 g/t Au), and Brass Monkey (6m @ 0.56 g/t Au), all open along strike and at depth.

Strong technical foundations: Project Vendors, and 2023 AMEC Prospector of the Year recipients for the Yin REE discovery, Dr. Ross Chandler and Luke Blais have joined BPM as Technical Advisor and Exploration Manager respectively and are in addition to existing consulting geologist Dr. Barry Murphy (ASX: PDI, DES, NYSE:AEM) all with a strong track record of discoveries.

Heritage & approvals: Heritage Agreement has been executed, with a PoW approved by DMPE.

Commercialisation potential: Proximity to multiple existing mills within 200 km radius provides optionality for toll treatment of future resources.

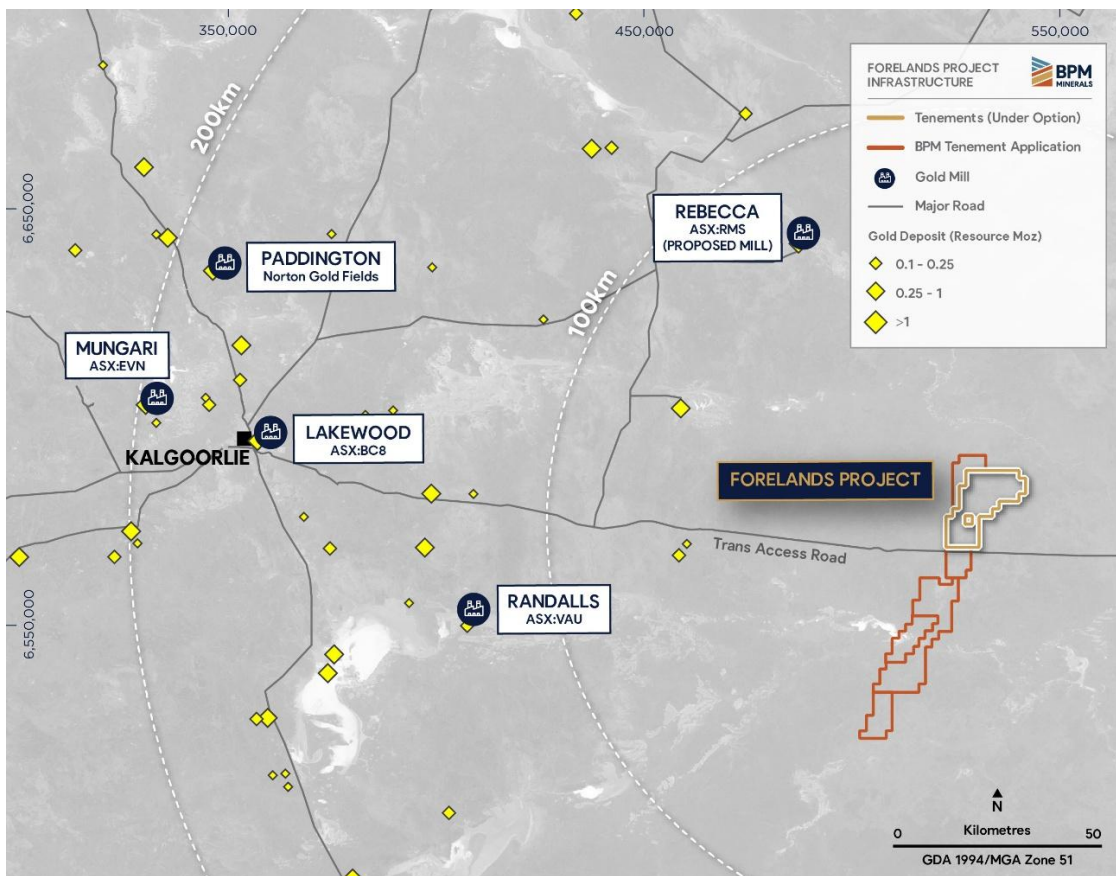


Fig. 2 - Forelands Project Location with relevant gold operations and deposits

For personal use only

For further information contact:

Oliver Judd

CEO

E: oj@bpmminerals.com

P: +61 8 9467 6393

- END -

This release is authorised by the Board of Directors of BPM Minerals Limited.

Competent Persons Statement

The information in this announcement that relates to Exploration Results is based on information compiled by Oliver Judd, who is a Member of AusIMM and who has more than five years' experience in the field of activity being reported on. Mr Judd is an employee of the Company. The information in the market announcement is an accurate representation of the available data.

Mr. Judd has sufficient experience which is relevant to the style of mineralisation and type of deposit under consideration and to the activity which he is undertaking to qualify as a Competent Person as defined in the 2012 Edition of the 'Australasian Code for Reporting of Exploration Results, Mineral Resources and Ore Reserves'. Mr. Judd consents to the inclusion in the report of the matters based on his information in the form and context in which it appears.

The Company confirms that it is not aware of any new information or data that materially affects the information included in prior market announcements and, in the case of exploration results, that all material assumptions and technical parameters underpinning the results in the relevant market announcement continue to apply and have not materially changed. The Company confirms that the form and context in which the Competent Person's findings are presented have not been materially modified from the original market announcement.

About BPM Minerals

BPM Minerals Limited (ASX:BPM) is a Perth-based precious, base and critical mineral explorer with a portfolio of projects located across Western Australia. The Company seeks to build its landholdings within Tier-1 mining jurisdictions. The company is currently focussed upon its newly acquired Forelands Project, an underexplored, high-grade gold system situated along a major structural corridor on the Yilgarn-Albany Fraser margin.

The management and exploration teams are well supported by an experienced Board of Directors who have a strong record of funding and undertaking exploration activities which have resulted in the discovery of globally significant deposits both locally and internationally.



BPM Minerals Western Australian Projects

For personal use only