



## Golden Ridge Project, NE Tasmania

# Maiden Drilling at Double Event Targets Extensive High-Grade Gold System

### Highlights

- **Maiden diamond drilling program underway** at the Double Event prospect targeting **high-grade quartz-sulphide veins exposed in trenching** to the east and west of historical workings
- Latest trenching results (Trenches 3 and 9) have confirmed the Double Event **mineralised corridor has a strike length of at least 275m which remains open**
- Observations from recently completed Trench 10 indicate that the mineralisation continues a further 50m west (assays pending), potentially extending the **total strike extent to approximately 330m**
- Surface trenching has confirmed historical reports of high-grade quartz-sulphide veins within the Double Event mineralised zone. **Previously reported channel sample results include**<sup>1</sup>:
  - **Trench 8:** 2.6m @ 6.4g/t Au, including 0.2m @ 15.2g/t Au and 0.8m @ 16.5g/t Au
  - **Trench 6:** 0.4m @ 17.4g/t Au and 0.3m @ 17.0g/t Au
  - **Trench 5:** 2.7m @ 2.6g/t Au, including 0.2m @ 23.5g/t Au
  - **Trench 4:** 1.2m @ 9.5g/t Au
- Further trenching is planned along strike to the east and west, to further assess the continuity of mineralisation at Double Event
- Assay results pending for diamond drilling at Grenadier prospect
- For further information or to post questions go to the Flynn Gold Investor Hub at <https://flynngold.com.au/link/yaG9jr>

**Flynn Gold Limited (ASX: FG1, “Flynn” or “the Company”)** is pleased to announce the commencement of drilling at its expanding Double Event prospect within the Company’s 100%-owned Golden Ridge Project (Figure 1), located in Northeast Tasmania.

<sup>1</sup> See FG1 ASX Announcement dated 12<sup>th</sup> August 2025 for full details.



**JOIN FLYNN GOLD’S INTERACTIVE INVESTOR HUB** to interact with Flynn’s announcements and updates by asking questions or making comments which our team will respond to where possible

### ASX: FG1

ABN 82 644 122 216

#### CAPITAL STRUCTURE

Share Price: A\$0.026

Cash (11/09/25): A\$0.58M

Debt: Nil

Ordinary Shares: 391.3M

Market Cap: A\$10.2M

#### Options

Listed (FG1O): 50.6M

Unlisted Options: 65.5M

#### BOARD OF DIRECTORS

Clive Duncan

Non-Executive Chair

Neil Marston

Managing Director and CEO

Sam Garrett

Technical Director

John Forwood

Non-Executive Director

#### COMPANY SECRETARY

Mathew Watkins

#### CONTACT

Suite 2, Level 11  
385 Bourke Street  
Melbourne VIC 3000

info@flynngold.com.au  
www.flynngold.com.au

**Managing Director and CEO, Neil Marston commented:**

*“We are excited to have commenced our maiden drilling program at Double Event, a prospect with known high-grade gold workings but which has never been tested by drilling.*

*“The first diamond drilling program will test beneath the historical workings and recent trenches to provide critical insights into the continuity and depth extent of mineralisation first reported more than a century ago.*

*“Our trenching program has already confirmed multiple high-grade quartz-sulphide veins and extended the mineralised corridor to over 300 metres, with recent results also demonstrating the presence of elevated silver and lead. With drilling now underway and further assays pending, we are looking forward to unlocking the true potential of this under-explored prospect.”*

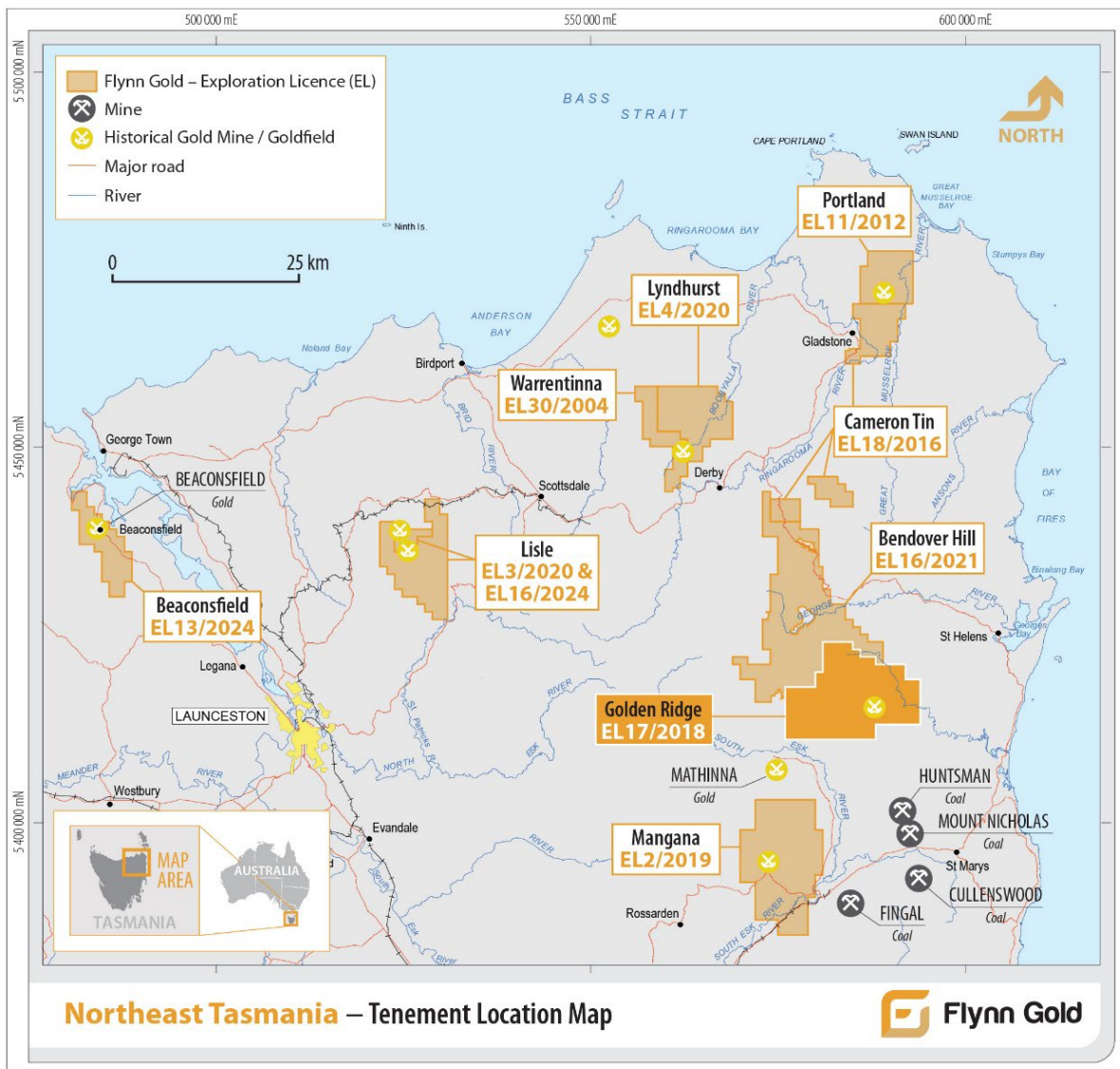


Figure 1 – Location of Flynn Gold’s NE Tasmanian Projects

## Double Event Prospect

### Trenching Program

A total of 10 trenches have been completed, exposing significant gold mineralisation hosted in ENE-trending quartz-sulphide veins over a strike length of more than 330 metres, making the discovery potentially one of the most significant by Flynn to date.

Significant trench channel intervals are shown in Figure 2 and Table 1.

In addition to previously reported results from Trenches 1, 2 and 4-8, new assays have been received for Trenches 3 and 9.

- **Trench 9:** Located west of Trench 8, west of the historical workings and intrusive contact, returned:
  - 1.7m @ 2.2g/t Au, incl. 0.8m @ 4.3g/t Au
- **Trench 3:** Excavated along the contact between the Golden Ridge Granodiorite and Mathinna Group metasediments, this trench confirmed quartz-sulphide veins transecting the intrusive contact. Assays returned elevated silver and lead alongside gold mineralisation, including:
  - 0.35m @ 0.4g/t Au, 20.5ppm Ag, 111ppm Pb
  - 1.3m @ 0.4g/t Au, 79.5ppm Ag, 7,528ppm Pb

These results confirm that the mineralisation is continuous for at least 275m along strike.

The recent excavation of **Trench 10**, located approximately 50m west of Trench 9, revealed further quartz-sulphide veins along strike. Assays are pending but field observations indicate that the mineralised corridor extends for at least ~330m and remains open in both directions.<sup>2</sup>

In addition to trench sampling, rock-chip samples (both float and outcrop) have been collected from around the excavations. To date, 34 samples have been analysed (14 previously reported, plus 20 new results).

Several new samples were taken along the same mineralised structures as the channel sample intervals and returned gold grades of up to 10.3g/t Au (Trench 4), consistent with trench channel sample results.

Quartz float samples of Mathinna Group metasediment material collected adjacent to the intrusive granodiorite contact returned elevated gold assay grades of up to 4.1g/t Au, 7.4ppm Ag and 128ppm Pb. Other samples collected also returned elevated assay grades of silver and lead, included 0.32g/t Au, 49.4ppm Ag and 3,390ppm Pb, and 0.25g/t Au, 49.2ppm Ag and 1,465ppm Pb, demonstrating that quartz-sulphide veins within the sediments are mineralised with gold, silver and lead.

<sup>2</sup> *Cautionary Statement: The identification of quartz-sulphide veins in Trench 10 is based on geological observations only. Visual estimates of mineralisation are not a substitute for laboratory assays and should not be considered as an indicator of gold grade. Assay results are pending and expected within 8 weeks.*

## Drilling Program

Flynn has commenced its maiden diamond drilling program at the Double Event prospect. The program will comprise a series of short holes designed to test high-grade quartz sulphide veins reported in historical records and confirmed in recent surface trenching.

The first hole, EVDD001, has a planned depth of 70m, targeting approximately 20m below the historical Double Event Shaft (see Figure 2 and Figure 3).

Historical State Government reports (Twelvetrees, 1899) describe a steeply-dipping quartz vein 0.6-0.9m wide returning assays up to 4.3oz/t Au (~133.7g/t Au) from the base of the 60-foot (18m) shaft. Despite these historical records of very high grades, the Double Event prospect has never been tested by modern exploration or drilling until now<sup>3, 4</sup>.

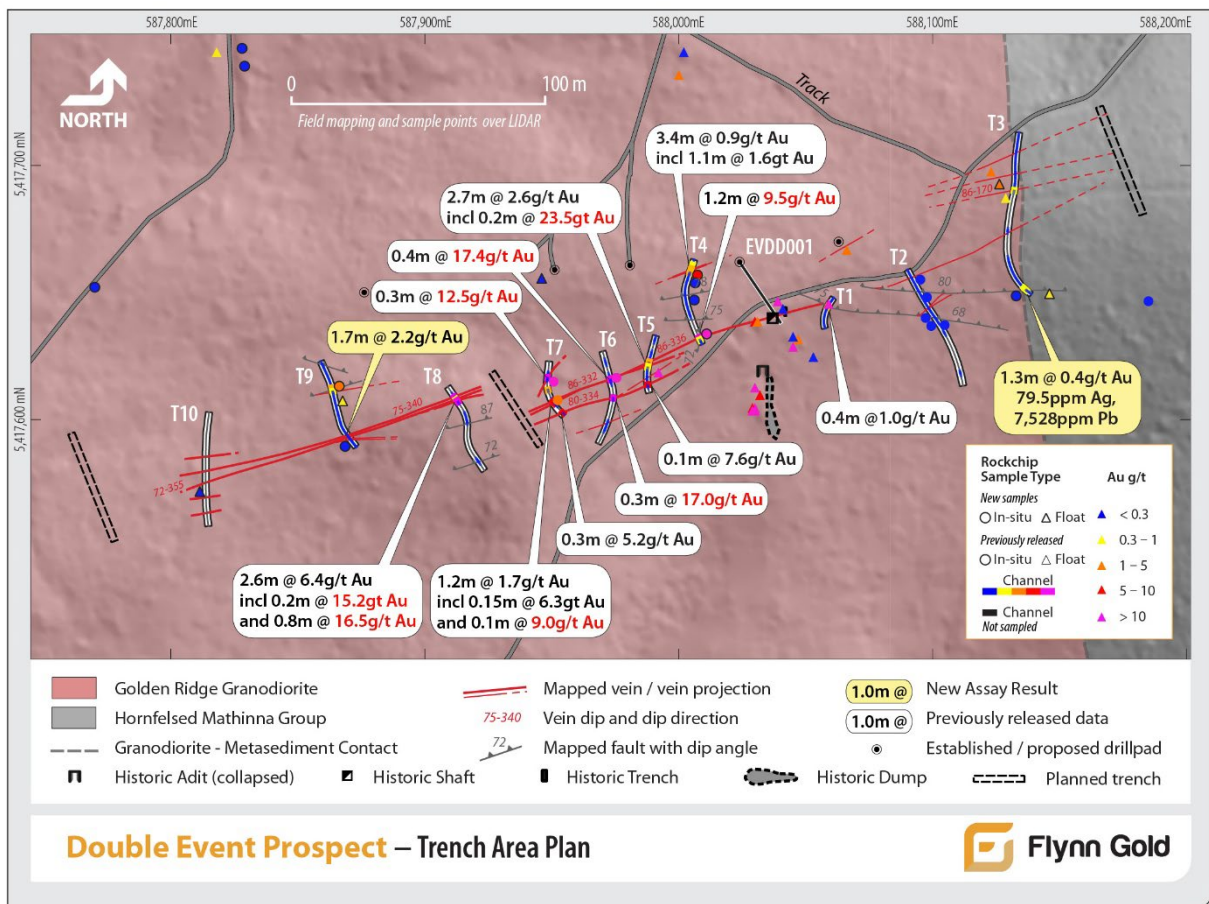


Figure 2 – Double Event Prospect Trench Area Plan showing drill-hole EVDD001

<sup>3</sup> Ref: Report on Gold Mines near Hogan's Track, W.H. Twelvetrees, Oct 1899 (MRT Report – O/S 144)

<sup>4</sup> Note: The Double Event historic assay results are drawn from historic government records (refer JORC Table 1 for details). These figures are considered historic in nature and are presented for historical and geological context only. They are not reported as Exploration Results, Mineral Resources or Ore Reserves under the JORC Code (2012).

For personal use only

## Gold Mineralisation

The gold mineralisation observed in surface trenches at Double Event occurs in steep north-northwest-dipping, arsenopyrite-rich quartz veins ranging from 15mm to 200mm in thickness.

Veins occur as discrete structures or in tight swarms, consistent with structural trends recorded at other high-grade prospects within the Golden Ridge Project.

As with all of the Golden Ridge vein systems identified to date, the Double Event mineralisation is located near the intrusive contact of the Golden Ridge Granodiorite and Mathinna Supergroup metasediments.



*Figure 3 – Drill Rig Positioned over Diamond Drill Hole EVDD001*

To date only a small part of the contact area has been explored, although soil geochemistry results<sup>5</sup> suggest many untested targets exist (see Figure 4).

## Prospect Background

Historical workings at the Double Event prospect include the 60-foot shaft, a north-driven adit intersecting the vein at approximately 21m depth, and shallow trenches extending east along strike for over 30m.

<sup>5</sup> See FG1 ASX Announcement dated 24 April 2025 for full details

Flynn geologists recently located the historical Double Event shaft and confirmed the presence of high-grade gold by sampling mineralised quartz float from Mullock dumps adjacent to the shaft, trenches and now collapsed adit.

Significant assays reported previously include:

- Mullock dump samples: 7.9g/t, 18.5g/t, 40.9g/t and 44.5g/t Au.
- Mullock/shaft area samples: 7.4g/t and 15.5g/t Au<sup>6</sup>.

The Double Event prospect is located approximately 1km north of Flynn's high-grade Trafalgar prospect, along the same granodiorite-metasediment contact (Figure 4).

### Grenadier Diamond Drilling

The processing and sampling of drill core from the recent Grenadier drilling program<sup>7</sup> has been completed. Core samples have been dispatched to the laboratory for analysis and full results will be reported as they become available.

Approved by the Board of Flynn Gold Limited.

#### For more information contact:

Neil Marston  
Managing Director & CEO  
+61 3 9692 7222  
[info@flynngold.com.au](mailto:info@flynngold.com.au)

Nicholas Read  
Media & Investor Relations  
+61 (0) 419 929 046  
[nicholas@readcorporate.com.au](mailto:nicholas@readcorporate.com.au)

<sup>6</sup> See FG1 ASX Announcement dated 24 April 2025 for full details

<sup>7</sup> See FG1 ASX Announcement dated 4 September 2025 for full details

For personal use only

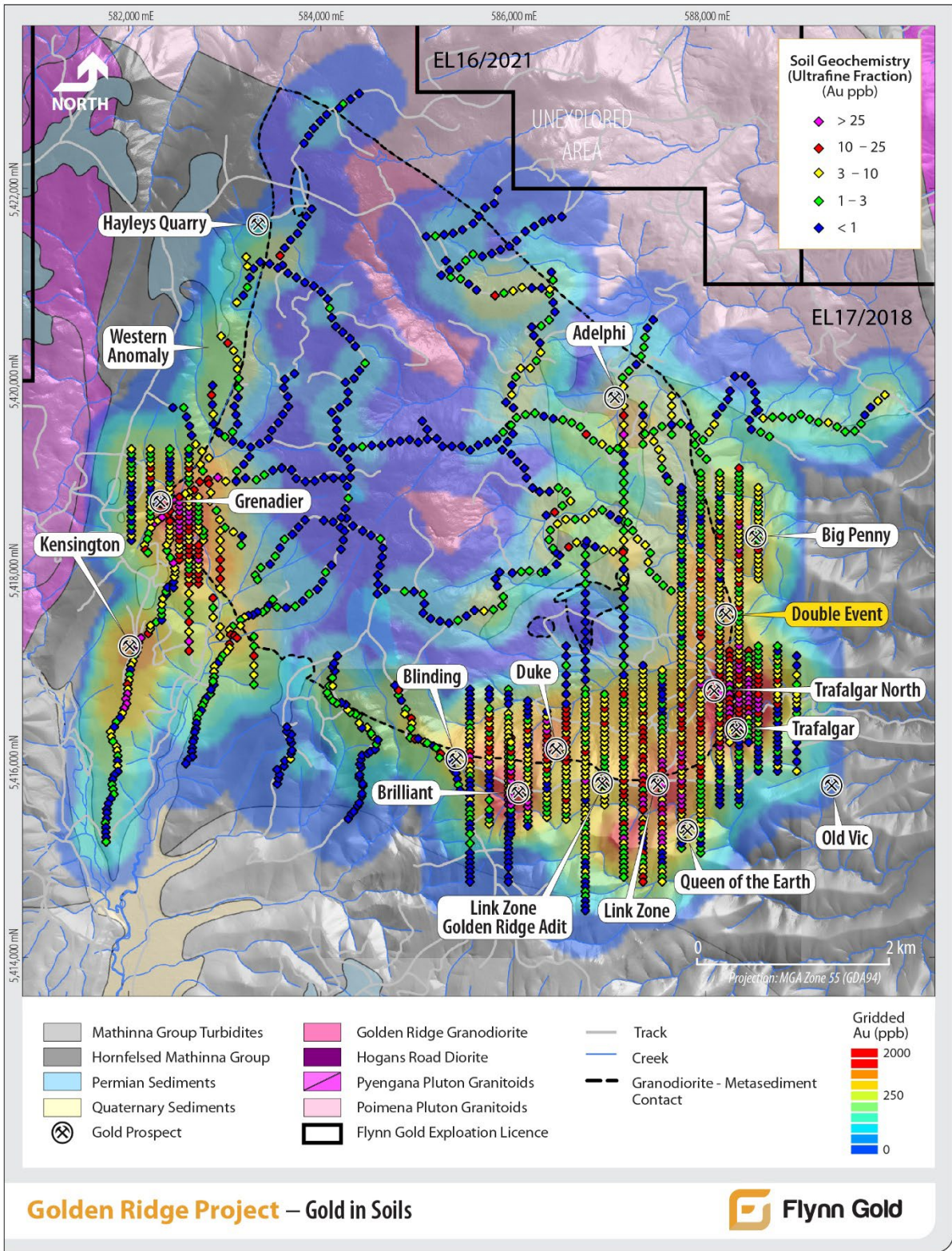


Figure 4 – Golden Ridge Project – Gold in Soils and Prospect Locations

## About Flynn Gold

Flynn Gold is an Australian mineral exploration company with a portfolio of projects in Tasmania and Western Australia (see Figure 5). The Company has ten 100% owned tenements located in northeast Tasmania which are highly prospective for gold as well as tin/tungsten.

The Company also has the Henty zinc-lead-silver project on Tasmania's mineral-rich west coast and the Firetower gold and battery metals project located in northern Tasmania. Flynn has also established a portfolio of gold-lithium exploration assets in the Pilbara and Yilgarn regions of Western Australia.

For further information regarding Flynn Gold please visit the ASX platform (ASX: FG1) or the Company's website [www.flynngold.com.au](http://www.flynngold.com.au).

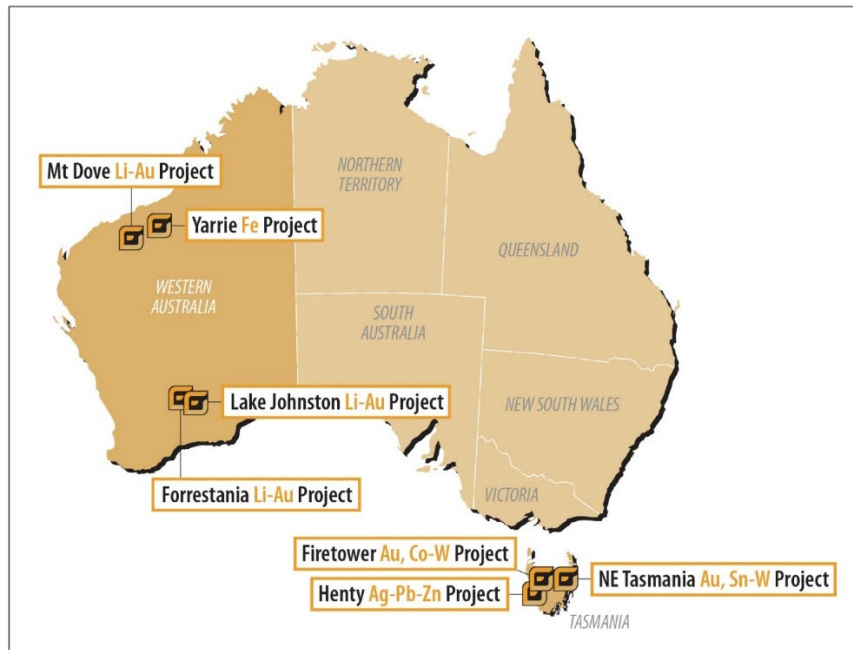


Figure 5 – Location Plan of Flynn Gold Projects

**Table 1 – Double Event Prospect: Significant Trenching Intervals**

Trench ID	From (m)	To (m)	Interval (m)	Au (g/t)	Ag (ppm)	Pb (ppm)	Comments
DETR003	22.75	23.1	0.35	0.4	20.5	111	Qtz + Aspy veining
DETR003*	63.2	64.5	1.3	0.4	79.5	7,528	Qtz + Aspy veining
DETR009*	11.2	12.9	1.7	2.2	0.3	22	Zone of Qtz + Aspy veining
<i>Inc.</i>	<b>11.2</b>	<b>12.0</b>	<b>0.8</b>	<b>4.3</b>	0.6	24	Qtz + Aspy vein

**Table 2 - Double Event Prospect: Rock Chip Sample Results**

Sample ID	Sample Type	Description	Au (g/t)	Ag (ppm)	As (ppm)	Pb (ppm)	Easting (m)	Northing (m)
78767	Float	Qtz + Aspy vein fragments	0.32	49.4	7750	3390	588146	5417651
78768	Float	80mm Qtz + Aspy breccia vein with sandstone clasts	4.05	7.43	>10000	128	588127	5417695
78769	Float	80mm laminated Qtz vein with FeOx	0.96	0.85	609	97.1	587866	5417609
78770	Float	150mm Qtz vein fragments	0.01	0.75	108	126.5	588414	5417575
78771	Float	30mm Qtz vein in sandstone boulder	0.01	0.5	193.5	32.9	588473	5417556
78772	Float	200mm Qtz + FeOx breccia vein with sandstone clasts	0.01	0.12	61.6	54	588452	5417532
78773	Float	Qtz vein fragments in sandstone	0.24	23.7	974	628	588208	5417680
78774	Outcrop	120mm Qtz + Aspy vein, taken from floor adjacent to channel sample interval Trench 3, 64.0-64.5m (0.5m @ 0.3g/t Au)	0.25	49.2	3800	1465	588135	5417650
78775	Outcrop	Qtz vein sample from fault adjacent to channel sample interval Trench 9, 11.2-12.0m (0.8m @ 4.3g/t Au)	3.81	2.01	>10000	67.2	587863	5417611
78776	Outcrop	75mm Qtz + Aspy vein taken from floor adjacent to channel sample interval Trench 9, 33.0-33.2m (0.2m @ 0.02g/t Au)	0.1	0.59	1815	39.6	587869	5417593
78777	Float	120mm Qtz vein fragment	0.03	1.51	124.5	58.3	587946	5417657
78778	Float	100mm Qtz vein fragment	0.02	0.7	104	47.1	587851	5417819
78779	Outcrop	150mm Qtz vein	0.02	0.12	1820	31.6	587770	5417653
78780	Float	80mm Qtz + Aspy vein	0.05	0.38	1365	11.9	587813	5417574
78781	Outcrop	20mm Qtz vein	0.01	0.06	15	16.8	587829	5417740
78782	Outcrop	75mm Qtz vein	0.14	0.16	36.8	20.1	587828	5417747
81902	Outcrop	30mm Qtz + Aspy vein taken from opposite wall of channel sample interval Trench 4, 5.2-5.4m (0.2m @ 2.3g/t Au)	5.26	1.48	9310	32.8	588003	5417650
81903	Outcrop	20mm Qtz vein taken from opposite wall of channel sample interval Trench 4, 8.7-9.3m (0.6m @ 0.1g/t Au)	0.04	0.22	1990	34.4	588002	5417648
81904	Outcrop	30mm Qtz vein taken from opposite wall of channel sample interval Trench 4, 18.1-18.9m (0.8m @ 0.01g/t Au)	0.01	0.04	682	20.6	588002	5417639
81905	Outcrop	100mm Qtz + Aspy vein taken from opposite wall of channel sample interval Trench 4, 32.7-32.9m (0.2m @ 12.15g/t Au)	10.3	5.35	>10000	20.5	588007	5417627

Note:

\* Compositated intervals: Significant intervals >0.3 g/t Au, max internal dilution = 3m (<0.3 g/t Au).

- Abbreviations:

- Qtz	Quartz	- Aspy	Arsenopyrite
- Pyr	Pyrite	- FeOx	Iron Oxide

For personal use only

**Table 3 - Double Event Prospect: Trench Channel Samples - All Assays**

Channel ID	Sample No	From (m)	To (m)	Interval (m)	Au (g/t)	Au (g/t) Field Dup	Ag (g/t)	As (ppm)	Pb (ppm)	Easting (m)	Northing (m)
DETR003	81964	0	1	1	0.03		0.05	76.8	30.7	588133.9	5417712.5
DETR003	81965	1	1.7	0.7	0.03		0.06	65.1	28.6	588133.8	5417711.7
DETR003	81966	1.7	2.6	0.9	0.03		0.07	148	33.4	588133.7	5417710.9
DETR003	81967	2.6	3.3	0.7	0.02		<0.01	16.8	29.9	588133.6	5417710.1
DETR003	81968	3.3	4.3	1	0.02		0.06	44.2	35.7	588133.5	5417709.2
DETR003	81969	4.3	5	0.7	0.02		0.01	16.8	27.3	588133.4	5417708.4
DETR003	81970	5	6	1	0.02		0.03	51.9	32.9	588133.2	5417707.6
DETR003	81971	6	7	1	0.02		0.06	54.7	26.9	588133.1	5417706.6
DETR003	81972	7	7.3	0.3	0.16		0.21	186	27.4	588133.0	5417705.9
DETR003	81973	7.3	8.1	0.8	0.03		0.11	239	35.8	588132.9	5417705.4
DETR003	81974	8.1	9	0.9	0.03		0.1	263	34.9	588132.8	5417704.5
DETR003	81975	9	10	1	0.02		0.11	132	32.9	588132.7	5417703.6
DETR003	81976	10	11	1	0.03		0.12	109	36.4	588132.6	5417702.6
DETR003	81977	11	12	1	0.02		0.09	67.5	34.9	588132.6	5417701.6
DETR003	81978	12	13	1	0.02		0.04	68.1	33.7	588132.5	5417700.6
DETR003	81979	13	14	1	0.02		0.08	104.5	36.2	588132.5	5417699.6
DETR003	81980	14	15	1	0.02		0.04	118	34.3	588132.5	5417698.6
DETR003	81981	15	15.7	0.7	0.02		0.06	144.5	40.5	588132.5	5417697.7
DETR003	81982	15.7	15.8	0.1	0.02		0.05	270	36.2	588132.5	5417697.3
DETR003	81983	15.8	16.4	0.6	0.02		0.04	319	42.1	588132.6	5417697.0
DETR003	81984	16.4	16.75	0.35	0.04		0.1	1215	51.9	588132.6	5417696.5
DETR003	81985				Field Dup	0.04	0.13	1845	60.5		
DETR003	81986	16.75	17.5	0.75	0.02		0.04	321	36.1	588132.6	5417696.0
DETR003	81987	17.5	18	0.5	0.01		0.03	50.3	30.9	588132.6	5417695.3
DETR003	81988	18	19	1	0.01		0.04	40.8	27.2	588132.5	5417694.6
DETR003	81989	19	20	1	0.02		0.03	30.3	44.8	588132.5	5417693.6
DETR003	81990	20	20.5	0.5	0.01		0.01	40.7	52.3	588132.4	5417692.8
DETR003	81991	20.5	21.3	0.8	0.01		0.03	31.8	48.3	588132.3	5417692.2
DETR003	81992	21.3	22	0.7	0.02		0.07	49.5	70.5	588132.3	5417691.5
DETR003	81993	22	22.75	0.75	0.01		0.09	41.4	56.2	588132.2	5417690.7
DETR003	81994	22.75	23.1	0.35	0.41		20.5	103.5	111	588132.1	5417690.2
DETR003	81995				Field Dup	0.85	12.1	103.5	123		
DETR003	81996	23.1	24	0.9	0.03		0.13	491	88.9	588132.0	5417689.6
DETR003	81998	38	38.85	0.85	0.02		0.26	28	41.6	588129.6	5417674.9
DETR003	81999	38.85	39.1	0.25	0.06		0.32	39.5	27.8	588129.6	5417674.4
DETR003	82000	39.1	40	0.9	0.01		0.07	26.2	38.9	588129.5	5417673.8
DETR003	83001	49	50	1	0.02		0.07	52.9	31.1	588129.7	5417663.9
DETR003	83002	50	51	1	0.02		0.09	53.4	42.7	588129.9	5417662.9
DETR003	83003	51	51.5	0.5	0.01		0.07	49.9	25.5	588130.0	5417662.2
DETR003	83004	51.5	52	0.5	0.01		0.04	41.6	31.7	588130.2	5417661.7
DETR003	83005	52	52.8	0.8	0.01		0.04	24	20	588130.4	5417661.0
DETR003	83006	52.8	53.4	0.6	<0.01		0.07	30.8	27.9	588130.6	5417660.4
DETR003	83007	53.4	54	0.6	<0.01		0.08	28.6	21.8	588130.8	5417659.8
DETR003	83008	54	55	1	0.25		0.24	43.7	51.9	588131.1	5417659.1
DETR003	83009	55	56	1	<0.01		0.1	130.5	44.5	588131.5	5417658.2
DETR003	83010	56	57	1	0.01		0.19	411	21.4	588131.9	5417657.3
DETR003	83011	57	58	1	<0.01		0.12	263	61.6	588132.4	5417656.4
DETR003	83012	58	58.6	0.6	0.01		0.15	57.5	40.2	588132.8	5417655.7
DETR003	83013	58.6	59.3	0.7	<0.01		0.08	29.9	53.1	588133.2	5417655.2
DETR003	83014	59.3	60	0.7	0.01		0.09	67.1	18.2	588133.6	5417654.6
DETR003	83015	60	61	1	<0.01		0.1	44.5	49.3	588134.1	5417653.9
DETR003	83016	61	61.5	0.5	0.01		0.09	38.1	66.8	588134.6	5417653.3
DETR003	83017	61.5	62.2	0.7	0.02		0.13	66.1	140.5	588134.9	5417652.9
DETR003	83018	62.2	63.2	1	<0.01		0.16	145.5	147	588135.5	5417652.3
DETR003	83019	63.2	64	0.8	0.48		66	>10000	9270	588136.2	5417651.6
DETR003	83020				Field Dup	0.39	44.8	9210	6380		
DETR003	83021	64	64.5	0.5	0.34		126	>10000	4740	588136.7	5417651.2
DETR003	83022				Field Dup	0.26	53.2	5690	2500		
DETR003	83023	64.5	65	0.5	0.01		0.77	413	295	588137.0	5417650.9
DETR003	83024	65	66	1	0.03		2.46	800	265	588137.6	5417650.4
DETR003	83025	66	67	1	0.04		1.52	428	251	588138.4	5417649.8

For personal use only

Channel ID	Sample No	From (m)	To (m)	Interval (m)	Au (g/t)	Au (g/t) Field Dup	Ag (g/t)	As (ppm)	Pb (ppm)	Easting (m)	Northing (m)
DETR009	83027	0	1	1	0.04		0.07	51	16.2	587859.2	5417623.0
DETR009	83028	1	2	1	0.01		0.08	46.7	20.5	587859.6	5417621.6
DETR009	83029	2	2.5	0.5	0.02		0.07	60.9	18.8	587860.0	5417621.0
DETR009	83030	2.5	3	0.5	0.01		0.06	24	20	587860.2	5417620.5
DETR009	83031	3	4	1	0.02		0.03	54.4	21.8	587860.5	5417619.8
DETR009	83032	4	5	1	0.01		0.03	42.1	25.3	587860.9	5417618.9
DETR009	83033	5	6	1	<0.01		0.01	39.8	25.8	587861.3	5417618.0
DETR009	83034	6	7	1	0.02		0.03	56.1	26.2	587861.7	5417617.1
DETR009	83035	7	8	1	0.02		0.02	82.5	22.9	587862.1	5417616.2
DETR009	83036	8	9	1	0.03		0.03	232	22.8	587862.5	5417615.2
DETR009	83037	9	10	1	0.02		0.01	181.5	21.9	587862.8	5417614.3
DETR009	83038	10	10.9	0.9	0.02		0.02	113	22.1	587863.1	5417613.4
DETR009	83039	10.9	11.2	0.3	0.05		0.04	160.5	21	587863.3	5417612.8
DETR009	83040	11.2	12	0.8	4.27		0.8	>10000	27	587863.4	5417612.3
DETR009	83041				Field Dup		3.52	0.55	7470	24.4	
DETR009	83042	12	12.6	0.6	0.06		0.04	178.5	21.2	587863.6	5417611.6
DETR009	83043	12.6	12.9	0.3	0.79		0.27	426	18.6	587863.7	5417611.2
DETR009	83044				Field Dup		2.2	0.26	305	19.7	
DETR009	83045	12.9	13.3	0.4	0.13		0.06	110.5	17.5	587863.8	5417610.8
DETR009	83046	13.3	14	0.7	0.07		0.05	120.5	22.4	587863.9	5417610.3
DETR009	83047	14	15	1	0.06		0.04	151	20.3	587864.1	5417609.5
DETR009	83048	15	16	1	0.04		0.03	129.5	17.8	587864.3	5417608.5
DETR009	83049	16	17	1	0.05		0.03	135.5	20.9	587864.5	5417607.5
DETR009	83050	17	18	1	0.13		0.05	195.5	19.6	587864.7	5417606.5
DETR009	83051	18	19	1	0.04		0.03	121.5	17.2	587865.0	5417605.6
DETR009	83052	19	20	1	0.03		0.02	120	17.8	587865.2	5417604.6
DETR009	83053	20	21	1	0.04		0.02	108.5	16.9	587865.5	5417603.6
DETR009	83054	21	22	1	0.04		0.04	149.5	19.4	587865.7	5417602.7
DETR009	83055	22	22.4	0.4	0.03		0.02	154	18.2	587865.9	5417602.0
DETR009	83056	22.4	23	0.6	0.02		0.02	129	18.5	587866.0	5417601.5
DETR009	83057	23	24	1	0.03		0.02	116.5	18.8	587866.2	5417600.7
DETR009	83058	24	25	1	0.02		0.02	80.7	20.5	587866.5	5417599.8
DETR009	83059	25	25.4	0.4	0.02		0.02	113	19.8	587866.7	5417599.1
DETR009	83060	25.4	25.7	0.3	0.03		0.02	74.5	17.2	587866.8	5417598.8
DETR009	83061	25.7	26.4	0.7	0.02		0.03	101.5	17.9	587866.9	5417598.3
DETR009	83062	26.4	27	0.6	0.04		<0.01	116.5	20.3	587867.1	5417597.7
DETR009	83063	27	28	1	0.02		<0.01	75.8	19.4	587867.5	5417596.9
DETR009	83064	28	28.5	0.5	0.03		0.01	111.5	23.2	587867.8	5417596.3
DETR009	83065	28.5	29	0.5	0.02		<0.01	135.5	22.7	587868.1	5417595.8
DETR009	83066	29	30	1	0.04		<0.01	115.5	24.2	587868.5	5417595.2
DETR009	83067	30	30.5	0.5	0.03		0.01	126.5	24.7	587868.9	5417594.6
DETR009	83068	30.5	31	0.5	0.02		<0.01	110.5	23.1	587869.2	5417594.2
DETR009	83069	31	31.8	0.8	0.02		0.01	105.5	21.5	587869.6	5417593.7
DETR009	83070	31.8	32.3	0.5	0.03		<0.01	90.3	20.8	587870.0	5417593.1
DETR009	83071	32.3	33	0.7	0.04		0.02	102	17.9	587870.3	5417592.7
DETR009	83072	33	33.2	0.2	0.02		0.04	300	9.1	587870.6	5417592.3
DETR009	83073				Field Dup		0.03	0.05	366	10	
DETR009	83074	33.2	34	0.8	0.02		0.02	147	20	587870.9	5417591.9
DETR009	83075	34	34.3	0.3	0.01		<0.01	106.5	20.9	587871.2	5417591.5
DETR009	83076	34.3	34.5	0.2	0.01		0.05	132.5	24.2	587871.4	5417591.3
DETR009	83077				Field Dup		0.01	<0.01	122.5	22.8	
DETR009	83078	34.5	35.2	0.7	0.01		0.01	99.2	22	587871.7	5417590.9
DETR009	83079	35.2	35.4	0.2	0.02		0.01	158.5	22.9	587872.0	5417590.6
DETR009	83080	35.4	36	0.6	0.02		0.01	125.5	18.8	587872.2	5417590.3
DETR009	83081	36	36.4	0.4	0.05		0.02	246	18.2	587872.5	5417589.9
DETR009	83082	36.4	37	0.6	0.02		0.02	140	18.4	587872.9	5417589.5

**Table 4 – Double Event Prospect – Planned Diamond Drill Hole Information**

Drill hole ID	Easting GDA 94	Northing GDA 94	RL (m)	Azimuth (True)	Dip (Deg)	EOH (Depth-m)
EVDD001	588024	5417662	275	145.9	66	70

#### **Competent Person Statement**

The information in this ASX Announcement that relates to Exploration Results is based on information compiled by Mr Michael Fenwick, a Competent Person who is a Member of the Australian Institute of Geoscientists. Mr Fenwick is a full-time employee of Flynn Gold. Mr Fenwick has sufficient experience that is relevant to the style of mineralisation and type of deposit under consideration and to the activity being undertaken to qualify as a Competent Person as defined in the 2012 Edition of the 'Australasian Code for Reporting of Exploration Results, Mineral Resources and Ore Reserves'. Mr Fenwick consents to the inclusion in the report of the matters based on his information in the form and context in which it appears.

This announcement includes information that relates to Exploration Results prepared and first disclosed under the JORC Code (2012) and extracted from the Company's previous ASX announcements as noted, and the Company's Prospectus dated 30 March 2021. Copies of these announcements are available from the ASX Announcements page of the Company's website: [www.flynnngold.com.au](http://www.flynnngold.com.au).

The Company confirms that it is not aware of any new information or data that materially affects the information included within the Prospectus dated 30 March 2021.

#### **Forward Looking and Cautionary Statements**

Some statements in this announcement regarding estimates or future events are forward-looking statements. They include indications of, and guidance on, future earnings, cash flow, costs and financial performance. Forward-looking statements include, but are not limited to, statements preceded by words such as "planned", "expected", "projected", "estimated", "may", "scheduled", "intends", "anticipates", "believes", "potential", "predict", "foresee", "proposed", "aim", "target", "opportunity", "could", "nominal", "conceptual" and similar expressions. Forward-looking statements, opinions and estimates included in this report are based on assumptions and contingencies which are subject to change without notice, as are statements about market and industry trends, which are based on interpretations of current market conditions. Forward-looking statements are provided as a general guide only and should not be relied on as a guarantee of future performance. Forward-looking statements may be affected by a range of variables that could cause actual results to differ from estimated or anticipated results and may cause the Company's actual performance and financial results in future periods to materially differ from any projections of future performance or results expressed or implied by such forward-looking statements. So, there can be no assurance that actual outcomes will not materially differ from these forward-looking statements.

# JORC Code Table 1 for Exploration Results – Golden Ridge Project

## Section 1: Sampling Techniques and Data

Criteria	JORC Code explanation	Commentary
Sampling techniques	<p><i>Nature and quality of sampling (e.g. cut channels, random chips, or specific specialised industry standard measurement tools appropriate to the minerals under investigation, such as downhole gamma sondes, or handheld XRF instruments, etc.). These examples should not be taken as limiting the broad meaning of sampling.</i></p>	<p>The sampling described in this report refers to grab rock chip and channel sampling.</p> <p>Samples were collected by qualified geologists or under geological supervision. The nature and quality of sampling is carried out under QA/QC procedures as per industry standards.</p> <p>Page 3 of this announcement quotes historical assay figures collated in:</p> <p>Twelvetrees, W.H., 1899. <i>Report on Gold Mines near Hogan’s Track</i>. MRT Report – O/S 144.</p> <p>These historic results are included for background purposes only. The original report provides only limited information on sampling methods, analytical techniques, and QA/QC procedures. As such, the data cannot be verified, is considered historical in nature, and does not meet the reporting requirements of the JORC Code (2012). Flynn Gold has not independently validated these results and they should not be relied upon for resource or reserve estimation. They are presented to assist in understanding the exploration history of the Double Event prospect.</p>
	<p><i>Include reference to measures taken to ensure sample representivity and the appropriate calibration of any measurement tools or systems used.</i></p>	<p><b>Trench samples</b></p> <p>Trench samples were from a channel taken from the walls of a historic trench at interval lengths between 0.15m and 1.0m. The horizontal channel line was cut between 0.2m and 1.0m above the floor.</p> <p>Certified reference material (CRM) standards were inserted at least every 20 samples. Some field duplicates were collected to monitor sampling quality control, assess sample representivity, and evaluate the repeatability of gold assay results.</p> <p><b>Rock chip samples</b></p> <p>Rock-chip ‘in-situ’ and channel samples were taken from in-situ outcrop. Rock-chip ‘float’ samples were not in-situ, these rocks have potentially been transported.</p> <p>Rock chip samples weighed between 0.3 – 3 kg.</p> <p>Some grab rock chip samples may be selective and taken from either mineralised or unmineralised material. This kind of grab sampling enables preliminary/indicative metal grade and rock elemental composition to be ascertained but it is not as representative as continuous channel sampling or drilling.</p> <p>Some field duplicates were collected to check the consistency of the assaying methods.</p>
	<p><i>Aspects of the determination of mineralisation that are Material to the Public Report.</i></p>	<p><b>Rock chip / Channel Samples</b></p> <p>Samples were prepared at the ALS laboratory in Burnie. Samples were weighed (WEI-21), crushed (CRU-21), then pulverized (PUL-21) to a nominal 85% passing 75 microns.</p> <p>Samples were analysed for gold (Au) by fire assay with a 30 g charge (method AU-AA25) at ALS laboratories in Burnie. Multi-element analysis by four-acid digest (method MS-ME61) was conducted at ALS laboratories in Adelaide, Perth, or Townsville.</p>

For personal use only

Criteria	JORC Code explanation	Commentary
		<p><b>Visual observations in Trench 10</b></p> <p>Quartz sulphide veins were observed in Trench 10 that are interpreted to be continuation of mineralisation along strike to the west of Trench 9. These observations do not provide a measure of gold content or grade. The visual identification of sulphide minerals should not be considered a proxy or substitute for assay results. Assays from Trench 10 samples are pending and expected within 8 weeks after which validated results will be reported.</p>
<b>Drilling techniques</b>	<i>Drill type (e.g. core, reverse circulation, open-hole hammer, rotary air blast, auger, Bangka, sonic, etc.) and details (e.g. core diameter, triple or standard tube, depth of diamond tails, face-sampling bit or other type, whether core is oriented and if so, by what method, etc.).</i>	No new drilling reported.
<b>Drill sample recovery</b>	<i>Method of recording and assessing core and chip sample recoveries and results assessed.</i>	No new drilling reported.
	<i>Measures taken to maximise sample recovery and ensure representative nature of the samples.</i>	No new drilling reported.
	<i>Whether a relationship exists between sample recovery and grade and whether sample bias may have occurred due to preferential loss/gain of fine/coarse material.</i>	No new drilling reported.
<b>Logging</b>	<i>Whether core and chip samples have been geologically and geotechnically logged to a level of detail to support appropriate Mineral Resource estimation, mining studies and metallurgical studies.</i>	No new drilling reported. <b>Rock chip and channel samples</b> Rock chip and channel samples were logged for lithology, mineralisation, veining, alteration and structural orientation. Information from in-situ rock chip and channel samples is recorded to a level of detail to support future geological, Mineral Resource estimation, mining studies and metallurgical studies.
	<i>Whether logging is qualitative or quantitative in nature. Core (or costean, channel, etc) photography.</i>	Logging of rock-chip and channel samples is qualitative in describing lithology, mineralogy, alteration, veining, and textures. Quantitative measurements are also recorded where appropriate, such as vein thickness, percentage estimates of mineral species, and structural measurements (e.g., vein orientation). All trenches and samples are photographed for reference.
	<i>The total length and percentage of the relevant intersections logged.</i>	Each trench was logged in its entirety (100% of the exposed interval).
<b>Subsampling techniques and sample preparation</b>	<i>If core, whether cut or sawn and whether quarter, half or all core taken.</i>	No new drilling reported.
	<i>If non-core, whether riffled, tube sampled, rotary split, etc and whether sampled wet or dry.</i>	Rock-chip and channel samples were collected dry. No other sub-sampling techniques such as riffle splitting were utilised. Channel samples were collected directly from exposed outcrop using a hammer and chisel, with the entire sample submitted to the laboratory.

Criteria	JORC Code explanation	Commentary
	<i>For all sample types, the nature, quality and appropriateness of the sample preparation technique.</i>	<p>Samples were transported by road to ALS in Burnie for Au assays and then sent by air freight to Adelaide, Perth or Townsville for multi-element assays.</p> <p>The sample preparation for all samples follows industry best practice. Entire samples were prepared at the ALS laboratory in Burnie. Samples were weighed (WEI-21), crushed (CRU-21), then pulverized (PUL-21) to a nominal 85% passing 75 microns.</p> <p>Standardised equipment used with QC performed at the pulverisation stage at the labs.</p>
	<i>Quality control procedures adopted for all subsampling stages to maximise representivity of samples.</i>	Sampling is guided by Flynn’s protocols and Quality Control procedures, as per industry standards.
	<i>Measures taken to ensure that the sampling is representative of the in-situ material collected, including for instance results for field duplicate/second-half sampling.</i>	<p>Field QC procedures involve the use of certified reference material as assay standards and blanks, as well as coarse crush duplicates.</p> <p>For analysis of channel samples, CRM standards are inserted by the field Geologist at intervals accounting for 7 to 10% of total samples which is considered to be to industry standards.</p> <p>CRM results over low-, moderate-, and high-grade gold ranges indicate acceptable levels of accuracy and precision of assay batch results.</p> <p>Field duplicates were taken for channel samples. Assay results were within the acceptable error margin of their originals.</p>
	<i>Whether sample sizes are appropriate to the grain size of the material being sampled.</i>	Rock chip and channel samples were 300g to 3kg.
<b>Quality of assay data and laboratory tests</b>	<i>The nature, quality and appropriateness of the assaying and laboratory procedures used and whether the technique is considered partial or total.</i>	All samples were submitted for preparation at the ALS laboratory in Burnie. Samples were analysed at Burnie for Au by AU-AA25 (30 g charge fire assay) then sent to Adelaide, Perth or Townsville for multi-element assay by 4 acid digest (MS-ME61).
	<i>For geophysical tools, spectrometers, handheld XRF instruments, etc, the parameters used in determining the analysis including instrument make and model, reading times, calibrations factors applied and their derivation, etc.</i>	No geophysical tools were used to determine any element concentrations
	<i>Nature of quality control procedures adopted (e.g. standards, blanks, duplicates, external laboratory checks) and whether acceptable levels of accuracy (i.e. lack of bias) and precision have been established.</i>	<p>Flynn Gold has its own internal QAQC procedure involving the use of certified reference material (CRM) standards, blank (non-mineralised) materials, and duplicate samples.</p> <p>If CRM or blank results were outside of the accepted error margin the sample batch is re-run (fully or partially).</p> <p>External laboratory checks have not been used to date.</p> <p><b>Rock chip and channel samples</b></p> <p>CRM standards were used in channel sample batches. They were not used in rock-chip batches.</p> <p>Internal laboratory QAQC checks are reported by the laboratory (ALS Burnie, Perth and Townsville).</p> <p>Review of the internal laboratory QAQC suggests the laboratory is performing within acceptable limits.</p> <p>Channel sample field duplicates were collected to monitor sampling quality control, assess sample representivity, and evaluate the repeatability of gold assay results.</p>

Criteria	JORC Code explanation	Commentary
		<p>Eight field duplicate samples were collected to assess the repeatability of gold assays. Relative Percent Difference (RPD) values range from 0% to 94%, with an average of ~34% and a median of ~24%. The highest RPD values were associated with low- to moderate-grade samples (0.6–1.5 g/t Au), where the coarse and nuggety nature of gold commonly results in variability between duplicate assays. At higher grades (&gt;3 g/t Au), repeatability was within acceptable limits (RPD ~19%), and several very low-grade samples (&lt;0.05 g/t Au) showed excellent repeatability (0% RPD).</p> <p>These results reflect the heterogeneous distribution of gold within quartz–sulphide vein material and are consistent with expectations for early-stage gold exploration.</p>
<b>Verification of sampling and assaying</b>	<i>The verification of significant intersections by either independent or alternative company personnel.</i>	<p>No new drilling reported.</p> <p>All reported data was subjected to validation and verification by company personnel prior to reporting.</p>
	<i>The use of twinned holes.</i>	No new drilling reported.
	<i>Documentation of primary data, data entry procedures, data verification, data storage (physical and electronic) protocols.</i>	<p>Primary data is collected both manually onto paper logging forms and digitally using a field laptop computer using in-house logging codes.</p> <p>The data is checked and verified prior to entering into a master database.</p> <p>Flynn Gold has done sufficient verification of the data, in the Competent Person’s opinion to provide sufficient confidence that sampling was performed to adequate industry standards and is fit for the purpose of planning exploration programs and generating targets for investigation.</p>
	<i>Discuss any adjustment to assay data.</i>	<p>All original sampling records are kept on file.</p> <p>No adjustments have been made to any of the assay data.</p>
<b>Location of data points</b>	<i>Accuracy and quality of surveys used to locate drillholes (collar and downhole surveys), trenches, mine workings and other locations used in Mineral Resource estimation.</i>	<p><b>Channel sampling</b></p> <p>Trenches were surveyed using a Leica GS18i rover which received RTK radio corrections from the Leica GS15 Base Station (GR1). The GR1 base station recorded static GPS observations which was then post process using Leica’s Smartnet post processing software which compared data from 5 nearby base stations (St Helens, Bicheno, Derby, Lilydale and Campbell Town). Leica Infinity software was used to post process fieldwork data to compute MGA94 positions. Survey accuracy is estimated to be within +/-0.1m.</p> <p><b>Drill collar and rock chip sampling</b></p> <p>Rock chip locations were surveyed using a handheld Garmin 64ST GPS (accuracy +/- 5m). In some instances, waypoint averaging was used to increase GPS accuracy.</p>
	<i>Specification of the grid system used.</i>	All Flynn Gold samples are surveyed in the MGA 94 Zone 55 grid system. Historic maps have been geo-referenced to MGA 94 Zone 55 using landmarks (historic workings, roads and creeks) which have been verified and matched to LiDAR imagery and GPS measurements taken in the field.
	<i>Quality and adequacy of topographic control.</i>	RL’s have been assigned from high-precision LIDAR data.
<b>Data spacing and distribution</b>	<i>Data spacing for reporting of Exploration Results.</i>	Rock–chip and channel samples were collected from areas containing mineralisation, alteration, or significant geological structures. Barren intervals of granodiorite or metasediment were not sampled. Channel sampling was selective and has not been completed along the full strike length of the trenches.

Criteria	JORC Code explanation	Commentary
	<p><i>Whether the data spacing and distribution is sufficient to establish the degree of geological and grade continuity appropriate for the Mineral Resource and Ore Reserve estimation procedure(s) and classifications applied.</i></p>	A Mineral Resource or Ore Reserve has not been determined.
	<p><i>Whether sample compositing has been applied.</i></p>	There was no sample compositing.
<p><b>Orientation of data in relation to geological structure</b></p>	<p><i>Whether the orientation of sampling achieves unbiased sampling of possible structures and the extent to which this is known, considering the deposit type.</i></p> <p><i>If the relationship between the drilling orientation and the orientation of key mineralised structures is considered to have introduced a sampling bias, this should be assessed and reported if material.</i></p>	<p><b>Rock chip and channel sampling</b></p> <p>In-situ rock chips are taken perpendicular to the contact of any mineralised zones.</p> <p>Trenches are excavated perpendicular to the regional trend of mineralisation. Channel samples are taken along a horizontal line which is satisfactory given the steep nature of veining at Golden Ridge.</p> <p>A sampling bias is not evident from the data collected to date.</p>
<p><b>Sample security</b></p>	<p><i>The measures taken to ensure sample security.</i></p>	<p>The chain of custody for all Flynn Gold samples from collection to dispatch to assay laboratory is managed by Flynn Gold personnel.</p> <p>The level of security is considered appropriate for exploration surface sampling programs.</p> <p><b>Rock chip and channel samples</b></p> <p>Samples were transported directly by Flynn Gold employees or contractors to the ALS laboratory in Burnie using company vehicles. ALS uses internal procedures to ensure sample security when transporting samples from Burnie to Perth or Townsville. Details of sample movements are digitally recorded and available in real time to authorised staff through the ALS Webtrieve Portal.</p> <p>No third parties have been allowed to access the samples.</p>
<p><b>Audits or reviews</b></p>	<p><i>The results of any audits or reviews of sampling techniques and data.</i></p>	<p>No audits or reviews have been carried out at this time.</p> <p>Due to the early stage of exploration, project-specific standard and technical procedures are still being adjusted.</p>

## Section 2: Reporting of Exploration Results

Criteria	JORC Code explanation	Commentary
<b>Mineral tenement and land tenure status</b>	<i>Type, reference name/number, location and ownership including agreements or material issues with third parties such as joint ventures, partnerships, overriding royalties, native title interests, historical sites, wilderness or national park and environmental settings.</i>	The Golden Ridge Project covers a total area of 167km <sup>2</sup> under a single exploration licence, EL17/2018,  The licence is owned and controlled by Flynn Gold through its 100% owned subsidiary, Kingfisher Exploration Pty Ltd.
	<i>The security of the tenure held at the time of reporting along with any known impediments to obtaining a licence to operate in the area.</i>	Flynn Gold is unaware of any impediments for exploration on the granted licence and does not anticipate any impediments to exploration for the area under application.
<b>Exploration done by other parties</b>	<i>Acknowledgment and appraisal of exploration by other parties.</i>	Relevant exploration done by other parties are outlined in References listed in this release.  All historical exploration records are publicly available via the Tasmanian Government websites including Land Information System Tasmania (thelist.tas.gov.au).  Previous exploration has been completed on Flynn Gold's projects by a variety of companies. Please refer to the FG1 Prospectus dated 30 <sup>th</sup> March 2021 for details and references relating to previous work.  All historical exploration records are publicly available via the Tasmanian Government websites including Land Information System Tasmania (thelist.tas.gov.au).  All work conducted by previous operators at the Golden Ridge project is considered to be of a reasonably high quality, and done to industry standards of the day, with information incorporated into annual statutory reports.  Previous operators have conducted very little exploration work outside of the historical small scale mine working areas at the Golden Ridge projects.
<b>Geology</b>	<i>Deposit type, geological setting and style of mineralisation.</i>	The Golden Ridge project is thought to host intrusion related gold system (IRGS) style mineralisation consisting of gold bearing quartz-carbonate-sulphide stockwork veining hosted in hornfelsed pelitic and quartzose sedimentary rocks within the Paleozoic Mathinna Group, northeast Tasmania.  Please refer to the FG1 Prospectus dated 30 <sup>th</sup> March 2021 for more details.
<b>Drillhole information</b>	<i>A summary of all information material to the understanding of the exploration results including a tabulation of the following information for all Material drillholes:</i> <ul style="list-style-type: none"> <li>• easting and northing of the drillhole collar</li> <li>• elevation or RL (Reduced Level – elevation above sea level in metres) of the drillhole collar</li> <li>• dip and azimuth of the hole</li> <li>• downhole length and intersection depth</li> <li>• hole length.</li> </ul>	No new drilling reported.
	<i>If the exclusion of this information is justified on the basis that the</i>	No new drilling reported.

Criteria	JORC Code explanation	Commentary
	<i>information is not Material and this exclusion does not detract from the understanding of the report, the Competent Person should clearly explain why this is the case.</i>	
<b>Data aggregation methods</b>	<i>In reporting Exploration Results, weighting averaging techniques, maximum and/or minimum grade truncations (e.g. cutting of high grades) and cut-off grades are usually Material and should be stated.</i>	No data aggregation or intercept calculations are included in this release.
	<i>Where aggregate intersections incorporate short lengths of high-grade results and longer lengths of low-grade results, the procedure used for such aggregation should be stated and some typical examples of such aggregations should be shown in detail.</i>	No data aggregation or intercept calculations are included in this release.
	<i>The assumptions used for any reporting of metal equivalent values should be clearly stated.</i>	No metal equivalent values have been reported in this release.
<b>Relationship between mineralisation widths and intersection lengths</b>	<i>These relationships are particularly important in the reporting of Exploration Results.</i>	No new drilling reported.
	<i>If the geometry of the mineralisation with respect to the drill hole angle is known, its nature should be reported.</i>	No new drilling reported.
	<i>If it is not known and only the downhole lengths are reported, there should be a clear statement to this effect (e.g. "downhole length, true width not known").</i>	No new drilling reported.
<b>Diagrams</b>	<i>Appropriate maps and sections (with scales) and tabulations of intersections should be included for any significant discovery being reported. These should include, but not be limited to a plan view of drill hole collar locations and appropriate sectional views.</i>	Included in the body of this announcement.
<b>Balanced reporting</b>	<i>Where comprehensive reporting of all Exploration Results is not practicable, representative reporting of both low and high grades and/or widths should be practiced to avoid misleading reporting of Exploration Results.</i>	The accompanying document is considered to represent a balanced report in context of the exploration results being reported.

Criteria	JORC Code explanation	Commentary
<b>Other substantive exploration data</b>	<i>Other exploration data, if meaningful and material, should be reported including (but not limited to): geological observations; geophysical survey results; geochemical survey results; bulk samples – size and method of treatment; metallurgical test results; bulk density, groundwater, geotechnical and rock characteristics; potential deleterious or contaminating substances.</i>	<p>All relevant and material exploration data is shown on figures, presented in tables, and discussed in the text.</p> <p>Previous soil sampling, stream sediment sampling and regional reconnaissance rock chip sampling indicated unexplored gold anomalies over a +9km strike length at the Golden Ridge Project. Please refer to the FG1 Prospectus dated 30<sup>th</sup> March 2021 and references listed in this release for more details.</p>
<b>Further work</b>	<i>The nature and scale of planned further work (e.g. tests for lateral extensions or depth extensions or large-scale step-out drilling).</i>	<p>Planned exploration programs include continued geological mapping, rock chip sampling, trenching and channel sampling.</p> <p>Diamond drilling at the Double Event prospect is planned.</p>
	<i>Diagrams clearly highlighting the areas of possible extensions, including the main geological interpretations and future drilling areas, provided this information is not commercially sensitive.</i>	<p>Maps have been included in the main body of this report.</p>