

ASX Announcement 16<sup>th</sup> September 2025

## Oonagalabi drilling to Probe Tier-1 Scale Targets with Gravity, Magnetics & VTEM Alignment

### Key Highlights

- **Drilling late September**, with up to 14 RC holes / 3,750m across priority targets at Oonagalabi.
- **Bomb Diggity** (007P, 008P, 020P) cluster targeting rare gravity + magnetics + VTEM alignment, near mapped mineralisation and strong conductivity/chargeability<sup>1,2</sup>.
- **Oonagalabi presents scale & fertility**, with our previous drilling of 6, 150m-spaced holes hitting mineralisation in every hole<sup>3</sup>.
- **Dual-system thesis** of both a large SEDEX-style system with a Au-Bi intrusive overprint, the kind of combination that can host multiple high-grade domains.
- **Targeting the dual system** model with 017P (Train Track Fault VTEM, malachite & strong alteration), 018P (conductive VTEM core), 019P (southern high-mag trend) and 013P/014P/016P (Au–Bi overprint follow-ups) target multiple mineralised corridors. 07P/08P/020P targeting Bomb-Diggity and 09P/010P/011P/012P targeting large, highly conductive VTEM anomalies.

Litchfield Minerals Limited (“Litchfield” or “the Company”) is pleased to announce that preparations for the Phase 2 reverse circulation (RC) drilling campaign at the Oonagalabi Project, Northern Territory, are well advanced. The program is designed to test multiple high-priority geophysical and geochemical targets across the Oonagalabi system, with drilling scheduled to commence in late September 2025.

---

<sup>1</sup> ASX Announcement – 20 May 20225 - [Offset gravity anomalies identified at Oonagalabi](#)

<sup>2</sup> ASX Announcement – 21 August 2025 - VTEM Survey Uncovers Multiple High Priority Sulphide Targets

<sup>3</sup> ASX Announcement – 12 April 2025 - [Oonagalabi drilling confirms Broad Sulphide Mineralisation](#)

## Managing Director's Comment

“Each campaign at Oonagalabi reinforces our view that we are dealing with a system of genuine, potentially world-class scale. The key hallmarks are lining up, robust structural architecture, pervasive alteration and mineralisation, credible energy and fluid drivers, strong metal tenor and continuity, and compelling geophysical signatures.

Scale is best appreciated on the ground, but to frame it: the central Oonagalabi to VT2 fold corridor we're testing spans roughly ~4km of folded strike, think Newtown to Sydney CBD (~4km), South Yarra to Melbourne CBD (~4km), Toowong to Brisbane CBD (~5km) or Subiaco to Perth CBD (~4km).

In our last program we drilled six holes, each roughly spaced 150m apart, and every hole intersected mineralisation. This is a highly notable outcome and it's uncommon for a company of our size to own an asset with the scale potential of this asset. It also underpins our investment in VTEM, as systems of this scale and nature often host high-grade zones.

Our Phase 2 RC program is the most comprehensive target testing to date: ~80% of earthworks are complete, six new pads are built and ten of fourteen holes are already permitted. We have twelve holes planned across >4km of strike in the Oonagalabi to VT2 corridor and two at VT1, which if mineralised, have the potential to extend the Oonagalabi system to over 10km.

The 'Bomb Diggity' cluster will interrogate a geologically rare coincidence of gravity, magnetic and VTEM conductors at what I believe is the heart of the system, while northern and southern step-outs will target strong VTEM conductivity, IP chargeability responses, mapped mineralisation, potential gold-bearing zones and broader system extensions that have already been validated in the field.

Collectively, the data is pointing to a large SEDEX-style architecture potentially overprinted by intrusive-related Au-Bi mineralisation, a dual fingerprint consistent with camps capable of hosting multiple mineralised domains.

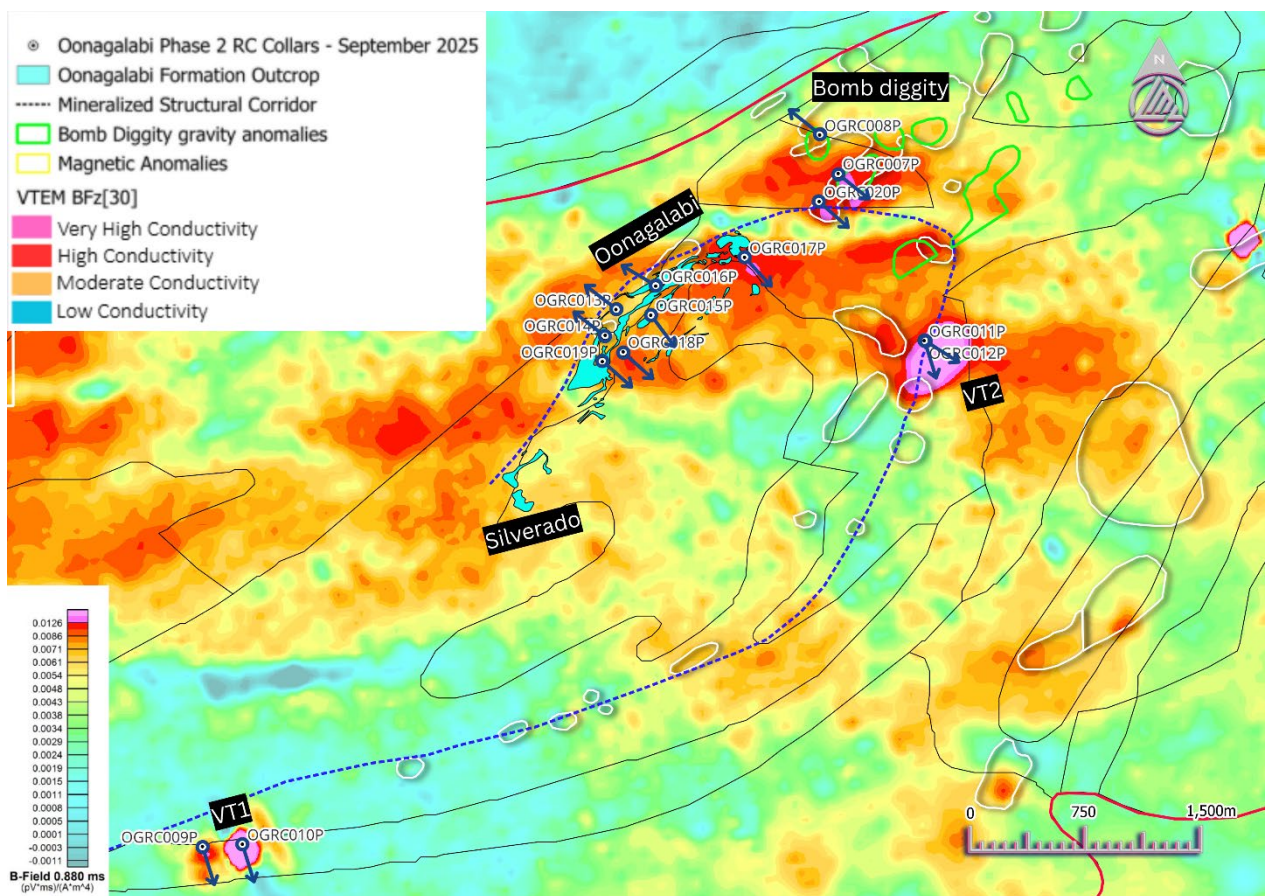
This is a capital-efficient, high-conviction program designed to answer the big questions quickly. The drill bit remains the arbiter, should this campaign deliver as anticipated, we believe Oonagalabi has the potential to evolve into a world-class base-metals discovery. We are prepared, resourced and ready to get the rig turning later this month.”

---

For personal use only

## Program Summary

- Up to 14 RC drill holes, for a maximum of 3,750m starting late September (**Figure 1**).
- 6 new pads constructed in the past week, targeting high-priority anomalies.
- 4 holes to utilise existing pads from the previous campaign, focused on potentially Au-Bi mineralised magnetic anomalies through the Oonagalabi Formation.
- Campaign designed to test gravity, magnetic and VTEM conductor anomalies, as well as areas of proven mineralisation.



**Figure 1.** BFz30 VTEM conductivity image showing the key conductivity targets in purple, the stratigraphic position of the prospective Oonagalabi Formation (blue dashed line) and the location of the planned RC holes (blue collar and trace).

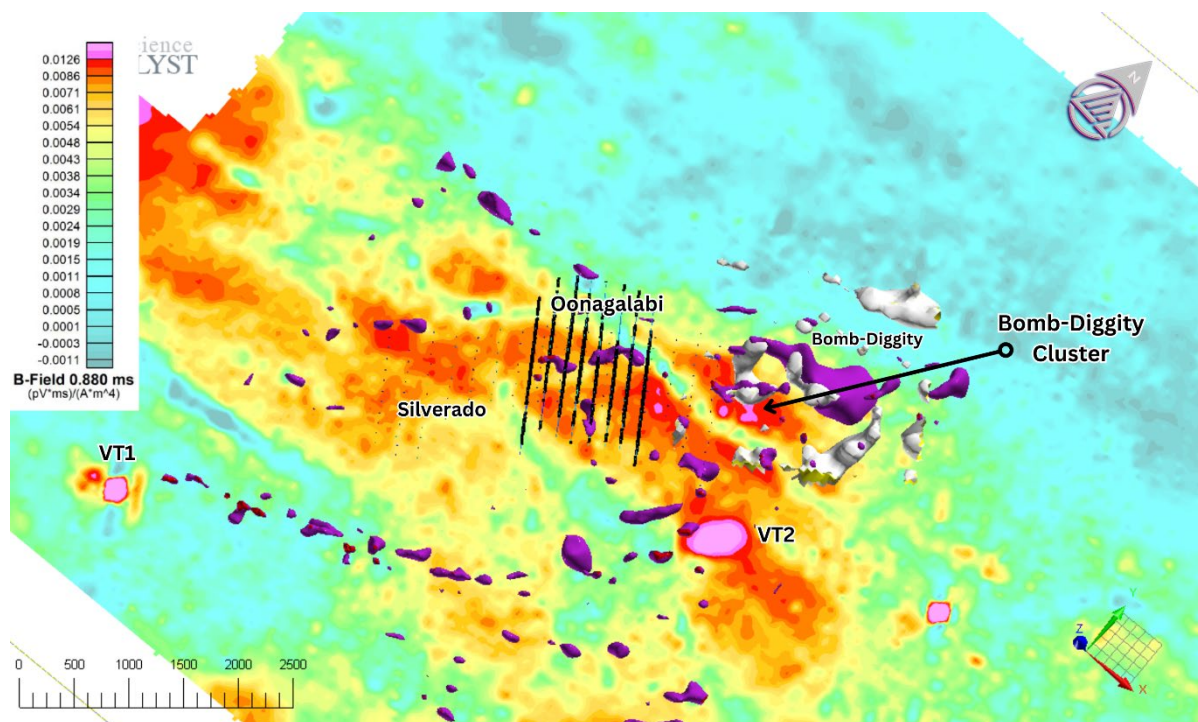
For personal use only

## Targeting Strategy & Geological Basis

### The Bomb Diggity Cluster (007P, 008P, 020P)

- **008P:** This drill hole is designed to penetrate the core of the main magnetic zone at Bomb Diggity, closely associated with a high gravity response and sitting at the heart of the anomaly.
- **007P:** Testing a compelling coincident magnetic high, gravity high, and VTEM conductor - a highly prospective geological signature.
- **020P:** Is targeting coincident geophysical signature (High Mag + Gravity + VTEM conductivity) 200m south of 007P (**Figure 2**). The Oonagalabi Formation is expected to be intersected in 20P  $\pm$  7P and may explain the elevated conductivity and gravity in this area.

Together, these three holes form the “Bomb Diggity cluster” and are considered one of the most prospective areas of the campaign.



**Figure 2.** BFz 30 conductivity image (looking northwest) showing magnetic (purple, +0.022 mesh) and gravity (white, +2.77 SG) three-dimensional inversion models and the Oonagalabi two-dimensional IP chargeability inversion sections. The Oonagalabi and Bomb Diggity zones are interpreted to sit within a northeast-trending mineralised structural zone.

For personal use only

## VT1 & VT2 Conductors — Targets 009P- 012P

The VT1 and VT2 anomalies are the most pronounced, potentially sulphide-bearing features in the VTEM dataset. Independent review by VTEM specialist Kate Hine of Mitre Geophysics, supports a high likelihood of a sulphide source. These conductors are both highly conductive and laterally extensive, with clear potential to host high-grade mineralisation along strike and down-dip.

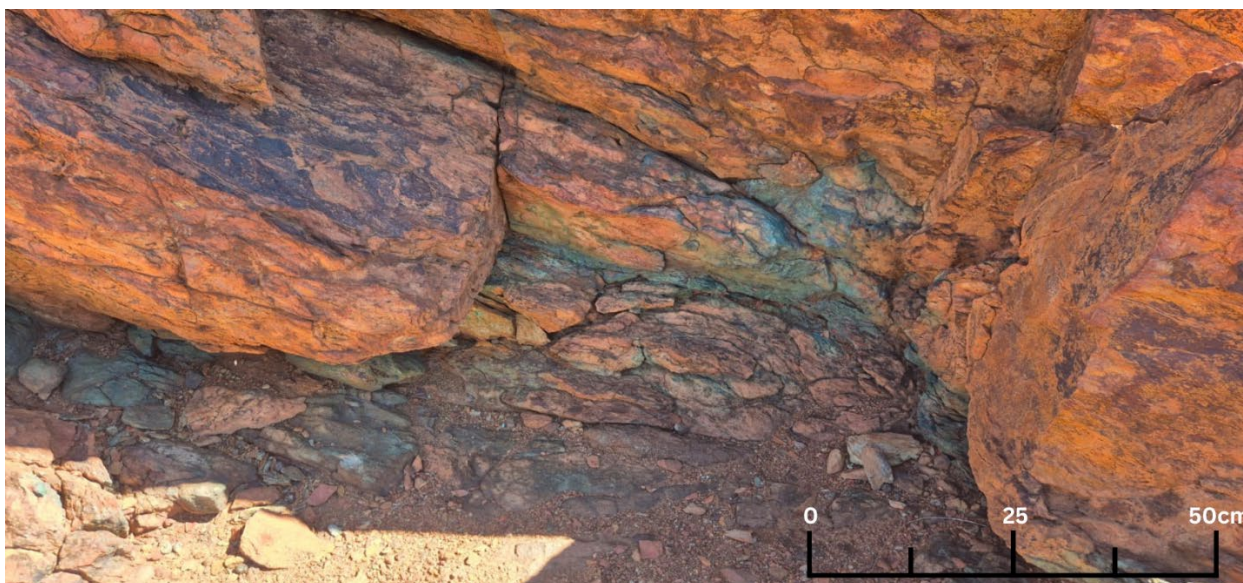
Given our approach to this program is to maintain momentum, all VTEM target holes will be PVC-cased to enable downhole EM (DHEM) for further target refinement and vectoring.

- **VT1 (009P & 010P):** VT1 exhibits peak modelled conductance of ~700 S and presents as a segmented cluster resolved across six plates. We interpret this as conductor partitioning by folding and/or faulting. Holes 009P and 010P are positioned to intersect the highest-conductance modelled plates where the Oonagalabi Formation is interpreted to be.
- **VT2 (011P & 012P):** VT2 resolves cleanly into a single, laterally continuous plate with ~500m of modelled strike and probable depth continuation. Holes 011P and 012P are designed to test the geometry in two orientations to maximise the probability of intersecting the core of the conductor in this first pass.

---

## Northern Extension – 017P

- This drill hole is positioned on the Train Track Fault, originally thought to truncate the Oonagalabi Formation.
- Recent fieldwork demonstrated that the formation continues on the other side of the fault, significantly extending the mineralised system.
- 017P will test an elevated conductivity anomaly and the extension of the northeastern IP +20mV/V chargeability anomaly; ground-truthing on 11<sup>th</sup> of September confirmed intense alteration (anthophyllite) and visible malachite (copper carbonate mineralisation) at surface (**Figure 3**). Surface mineralisation and discrete geophysical anomalies at depth make 17P a compelling drillhole target.



*Figure 3. Malachite (copper carbonate) was observed immediately below the collar of hole 017P (485972E, 7442671N, 829RL), occurring as staining within anthophyllite alteration over a 2m section of outcrop, with an estimated visual grade of ~2% Cu.*

*Note: Visual estimates of mineral abundance should never be considered a proxy or substitute for laboratory analyses where concentrations of grades are the factors of principal economic interest. Visual estimates also potentially provide no information regarding impurities or deleterious physical properties relevant to valuation.*

---

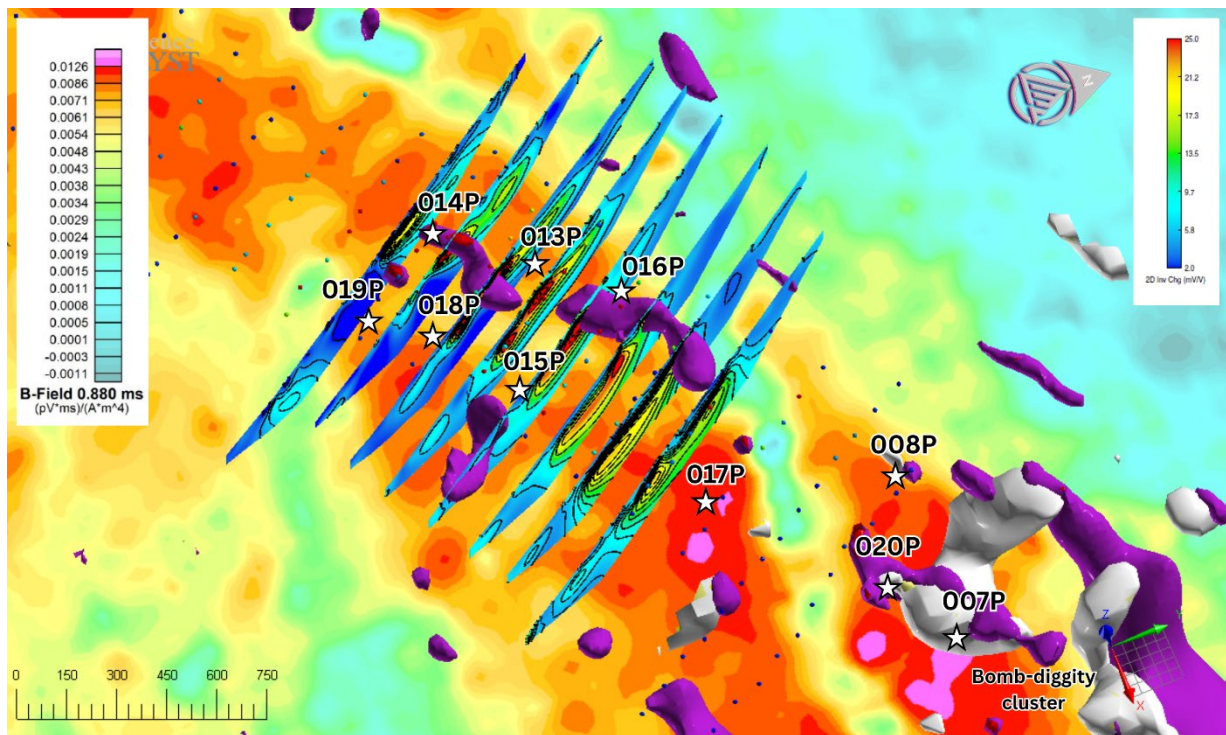
#### **Magnetic Overprint (Gold) Zone – 013P, 014P, 016P**

- With these holes, we are ensuring that our follow-up drilling provides data across a strong magnetic anomaly where the Company previously intersected gold and bismuth mineralisation overprinting Cu-Zn mineralisation (OGRC002, 15m @ 0.45 g/t Au, 0.17% Bi from 55m).
- These holes are also designed to test for wider intercepts and continuity of this Au-Bi mineralised zone (**Figure 4**).

---

#### **Conductive Oonagalabi Zone – 018P**

- The drill hole targets higher conductivity zones within the Oonagalabi Formation proximal to, but untested by historic drilling.
  - This area exhibits strong alteration, abundant mineralisation, and excellent geological setting, shaping up as one of the strongest drill-ready holes in the program.
-



*Figure 4. Magnetic (purple, +0.022 mesh) and gravity (white, +2.77 SG) three-dimensional inversion models overlaid with BFz 30 VTEM Conductivity with the Oonagalabi two-dimensional IP chargeability inversion sections).*

### Southern High Magnetic Zone – 019P

- This hole will test a southern magnetic anomaly where surface mapping identified magnetite-rich rocks.
- These are similar to those associated with higher-grade gold and bismuth mineralisation encountered in the last drilling campaign (OGRC002).
- The target area also shows strong surface copper mineralisation, alteration, and extensive Oonagalabi Formation outcrop.

### Historic Copper Zone – 015P

- This hole is deliberately situated in an area that historically delivered the highest-grade copper assays from both Litchfield's and earlier drilling efforts.
- Strong coincident conductivity (resistivity low) and IP chargeability anomaly, with potential to deliver a significant mineralised intercept.

## Geological Context

The Oonagalabi system sits on a major structural thrust linked to the Irindina Province, providing the architecture for a large-scale mineral system. Recent mapping and drilling have extended the Oonagalabi outcrop continuously to ~2.5km, including a newly recognised zone north of the “train-track” fault within the Oonagalabi Formation and to potentially over 10km if extended down to the VT1 target.

On current evidence, Oonagalabi is best interpreted as a SEDEX-style system given its footprint and stratigraphic position, however, the nearby “Bomb Diggity” magnetic anomaly leaves open the possibility of intrusion-related overprinting (Au-Bi mineralisation).

Our last campaign confirmed gold and bismuth overprints<sup>4</sup> within the broader Cu-Zn system. We interpret these as linked to the Bomb Diggity anomaly, a potential intrusive-related hydrothermal driver capable of focusing mineralisation along the existing structural framework. This dual signature (SEDEX architecture with intrusive overprint) is a hallmark seen in several Tier-1 systems and forms a compelling thesis for Phase 2 drilling.

<sup>4</sup> ASX Announcement – 20 May 20225 - <https://api.investi.com.au/api/announcements/lms/ad2d741a-8b2.pdf>

---

## Earthmoving and Site Works

- Earthmoving activities are now ~80% complete, with six new pads constructed and additional historical pads re-opened (**Figure 5**).
- The Company expects earthworks to be fully complete ahead of drill rig mobilisation in late September 2025.



*Figure 5. Drill pad 19P (looking northwest, 485048E, 7442002N, 821RL) towards massive hills of outcropping Oonagalabi formation in the foreground to the Harts Range in the background.*

---

### Permitting – VT1 and VT2 Approvals

- 10 of 14 drill holes are already fully permitted, with the remaining 4 holes (9P, 10P, 11P, 12P), targeting the VT1 and VT2 conductor anomalies, required a new Environmental Mining Licence (EML) permit as they fell outside of previously approved programs.
  - The day these anomalies were identified in preliminary data, Litchfield submitted its application. The statutory 15-business-day exposure period has now concluded, with the Department and Litchfield having reached agreement on bonding, water management, and flora and fauna requirements.
  - The application is now awaiting final sign-off from the Environmental Department, which the Company anticipates within the next 7 days.
- 

### Next Steps

- Mobilisation of RC rig to site in late September 2025.
  - Drilling to commence at Bomb Diggity and northern extension targets.
  - Ongoing environmental permitting for remaining holes (VT1 & VT2) expected imminently.
  - Prepare tracks and pads for the VT1 and VT2 conductor drillholes.
- 

### Cautionary Statement

This announcement contains forward-looking statements that involve known and unknown risks, uncertainties, and other factors that may cause actual results, performance, or achievements to differ materially from those expressed or implied. Such statements include but are not limited to, interpretations of geophysical data, planned exploration activities, and potential mineralisation outcomes. Visual estimates of mineral abundance and pXRF results should never be considered a proxy or substitute for laboratory analyses where concentrations of grades are the factors of principal economic interest. Visual estimates also potentially provide no information regarding impurities or deleterious physical properties relevant to valuation. Forward-looking statements are based on Litchfield Minerals Limited's current expectations, beliefs, and assumptions, which are subject to change in light of new information, future events, and market conditions. While the Company believes that such expectations and assumptions are reasonable, they are inherently subject to business,

geological, regulatory, and operational risks. Further work, including drilling, is required to determine the economic significance of any anomalies identified. Investors should not place undue reliance on forward-looking statements. Litchfield Minerals Limited disclaims any obligation to update or revise any forward-looking statements to reflect events or circumstances after the date of this announcement, except as required by law.

### **About Litchfield Minerals**

Litchfield Minerals is a critical mineral explorer, primarily searching for base metals and uranium out of the Northern Territory of Australia. Our mission is to be a pioneering copper exploration company committed to delivering cost-effective, innovative and sustainable exploration solutions. We aim to unlock the full potential of copper and other mineral resources while minimising environmental impact, ensuring the longevity and affordability of this essential metal for future generations. We are dedicated to involving cutting-edge technology, responsible practices and stakeholder collaboration drives us to continuously redefine the industry standards and deliver value to our investors, communities and the world.

The announcement has been approved by the Board of Directors.

For further information please contact:

Matthew Pustahya

[Matthew@litchfieldminerals.com.au](mailto:Matthew@litchfieldminerals.com.au)

**Follow us on:**



[www.litchfieldminerals.com.au](http://www.litchfieldminerals.com.au)



[https://twitter.com/Litchfield\\_LMS](https://twitter.com/Litchfield_LMS)



<https://www.linkedin.com/company/litchfield-minerals-limited/>

### **Competent Person's Statement**

The information in this announcement relates to Exploration Results and is based on, and fairly represents, information and supporting documentation compiled by Mr Russell Dow (MSc, BSc Hons Geology), a Competent Person who is a Member of the Australian Institute of Mining and Metallurgy (AUSIMM) and is a full-time employee of Litchfield Minerals Limited. Mr Dow has

sufficient sampling experience that is relevant to the style of mineralisation and types of deposits under consideration and to the activity being undertaken to qualify as a Competent Person as defined in the 2012 Edition of the “Australasian Code for Reporting of Exploration Results, Mineral Resources and Ore Reserves” (JORC Code). Mr Dow consents to the inclusion in the Public Report of the matters based on their information in the form and context in which it appears. With regard to the Company’s ASX Announcements referenced in the above Announcement, the Company is not aware of any new information or data that materially affects the information included in the Announcements.

For personal use only

JORC Code, 2012 Edition – Table 1 report

Section 1 Sampling Techniques and Data

(Criteria in this section apply to all succeeding sections.)

Criteria	JORC Code explanation	Commentary
<b>Sampling techniques</b>	<ul style="list-style-type: none"> <li>• <i>Nature and quality of sampling (e.g. cut channels, random chips, or specific specialised industry standard measurement tools appropriate to the minerals under investigation, such as down hole gamma sondes, or handheld XRF instruments, etc). These examples should not be taken as limiting the broad meaning of sampling.</i></li> <li>• <i>Include reference to measures taken to ensure sample representivity and the appropriate calibration of any measurement tools or systems used.</i></li> <li>• <i>Aspects of the determination of mineralisation that are Material to the Public Report.</i></li> <li>• <i>In cases where 'industry standard' work has been done this would be relatively simple (e.g. 'reverse circulation drilling was used to obtain 1 m samples from which 3 kg was pulverised to produce a 30 g charge for fire assay'). In other cases more explanation may be required, such as where</i></li> </ul>	<p>The instruments and parameters used for the VTEM survey are as follow:</p> <ul style="list-style-type: none"> <li>• The VTEM survey was flown by UTS Geophysics Pty. Ltd.</li> <li>• Heliborne electromagnetic data was acquired with VTEM™ Max transmitter frequency of 25Hz, loop diameter 35m and mean terrain clearance height of 35m.</li> <li>• Line spacing was 200m across the full survey area with the central 40% of the survey also flown at 100m.</li> <li>• Three-dimensional plate modelling of VTEM preliminary data was Kate Hine at Mitre Geophysics.</li> <li>• VTEM anomalies were modelled with industry standard Maxwell EM software – utilising thin conductor plate scenarios for various, most relevant EM channel windows. VTEM final data was imported into Maxwell EM software using Geosoft/oasis database files. Resultant model scenarios for each of the five areas were exported to both</li> </ul>

personal use only

Criteria	JORC Code explanation	Commentary
	<p><i>there is coarse gold that has inherent sampling problems. Unusual commodities or mineralisation types (e.g. submarine nodules) may warrant disclosure of detailed information.</i></p>	<p>3D DFX and GIS plan view formats to aid follow-up ground EM optimization and consideration.</p> <ul style="list-style-type: none"> <li>Rock chip samples were collected by selecting multiple small chips from each outcrop to produce a representative sample.</li> </ul> <p><b>pXRF Analysis / Sampling</b></p> <ul style="list-style-type: none"> <li>Portable XRF (pXRF) readings were collected using an Olympus Vanta analyser in 3-beam, Geochem mode. Measurements were taken on a flat bench-top on unprepared rock chips (no cutting, grinding or pulverising). A relatively flat face of each chip was placed under the analyser nose cap to improve contact and repeatability.</li> <li>pXRF results were used for rapid geochemical screening and vectoring; they are <b>indicative/qualitative</b> and not a substitute for laboratory assays.</li> <li>Multiple readings were collected on each sample unless otherwise stated.</li> <li>Data collected for 45 seconds for each sample (15 seconds per beam).</li> </ul>
<p><b>Drilling techniques</b></p>	<ul style="list-style-type: none"> <li><i>Drill type (e.g. core, reverse circulation, open-hole hammer, rotary air blast, auger, Bangka, sonic, etc) and details (e.g. core diameter, triple or standard tube, depth of diamond tails, face-sampling bit or other type, whether core is oriented and if so, by what method, etc).</i></li> </ul>	<ul style="list-style-type: none"> <li>No new drilling is reported.</li> </ul>

Criteria	JORC Code explanation	Commentary
<b>Drill sample recovery</b>	<ul style="list-style-type: none"> <li>Method of recording and assessing core and chip sample recoveries and results assessed.</li> <li>Measures taken to maximise sample recovery and ensure representative nature of the samples.</li> <li>Whether a relationship exists between sample recovery and grade and whether sample bias may have occurred due to preferential loss/gain of fine/coarse material.</li> </ul>	<ul style="list-style-type: none"> <li>No new drilling is reported.</li> </ul>
<b>Logging</b>	<ul style="list-style-type: none"> <li>Whether core and chip samples have been geologically and geotechnically logged to a level of detail to support appropriate Mineral Resource estimation, mining studies and metallurgical studies.</li> <li>Whether logging is qualitative or quantitative in nature. Core (or costean, channel, etc) photography.</li> <li>The total length and percentage of the relevant intersections logged.</li> </ul>	<ul style="list-style-type: none"> <li>No new drilling is reported.</li> <li>Detailed field notes were collected for each rock chip sample.</li> </ul>
<b>Sub-sampling techniques and sample preparation</b>	<ul style="list-style-type: none"> <li>If core, whether cut or sawn and whether quarter, half or all core taken.</li> <li>If non-core, whether riffled, tube sampled, rotary split, etc and whether sampled wet or dry.</li> <li>For all sample types, the nature, quality and appropriateness of the sample preparation technique.</li> <li>Quality control procedures adopted for all sub-sampling stages to maximise representivity of samples.</li> </ul>	<ul style="list-style-type: none"> <li>No new drilling is reported.</li> <li>No rock chip sub-sampling was conducted.</li> </ul>

Criteria	JORC Code explanation	Commentary
	<ul style="list-style-type: none"> <li>Measures taken to ensure that the sampling is representative of the in situ material collected, including for instance results for field duplicate/second-half sampling.</li> <li>Whether sample sizes are appropriate to the grain size of the material being sampled.</li> </ul>	
<i>Quality of assay data and laboratory tests</i>	<ul style="list-style-type: none"> <li>The nature, quality and appropriateness of the assaying and laboratory procedures used and whether the technique is considered partial or total.</li> <li>For geophysical tools, spectrometers, handheld XRF instruments, etc, the parameters used in determining the analysis including instrument make and model, reading times, calibrations factors applied and their derivation, etc.</li> <li>Nature of quality control procedures adopted (e.g. standards, blanks, duplicates, external laboratory checks) and whether acceptable levels of accuracy (i.e. lack of bias) and precision have been established.</li> </ul>	<ul style="list-style-type: none"> <li>Transmitter loop diameter: 35m.</li> <li>Peak dipole moment – 700,000 NIA.</li> <li>Transmitter Pulse Width – 7ms.</li> <li>VTEM Max Receiver – Z, X coils (Y optional).</li> </ul> <p>pXRF</p> <ul style="list-style-type: none"> <li><b>Primary analytical method:</b> Olympus Vanta VMR model 3 Beam GeoChem mode using manufacturer default beam settings.</li> <li><b>Sample positioning &amp; measurement approach:</b> The analyser nose cap was held in firm contact with the rock-chip surface on a stable bench. Multiple readings were collected on each sample unless otherwise stated.</li> <li><b>Measurement environment (temperature):</b> All measurements were conducted indoors on a benchtop under ambient conditions. No temperature diagnostics were monitored.</li> <li><b>Calibration/standardisation:</b> The instrument operated on factory calibration with no user-applied matrix corrections.</li> <li><b>QAQC:</b> Prior to use, manufacturer-supplied silica blanks were analysed to check for contamination/carry-over and to confirm instrument function. On an Olympus supplied</li> </ul>

personal use only

Criteria	JORC Code explanation	Commentary
		<p>standard, repeat spot analyses were taken to assess repeatability. The instrument window and sample contact area were checked/cleaned between readings as required.</p> <ul style="list-style-type: none"> <li>• <b>Data treatment (raw vs corrected):</b> Reported pXRF values are raw instrument outputs from Geochem mode; no post-hoc corrections were applied.</li> <li>• <b>Moisture:</b> Samples were analysed on the bench free of obvious surface moisture; no drying or other preparation was undertaken.</li> <li>• <b>Laboratory assays:</b> pXRF results are preliminary and will be confirmed by laboratory assays for any material exploration results reported under the JORC Code.</li> </ul>
<i>Verification of sampling and assaying</i>	<ul style="list-style-type: none"> <li>• <i>The verification of significant intersections by either independent or alternative company personnel.</i></li> <li>• <i>The use of twinned holes.</i></li> <li>• <i>Documentation of primary data, data entry procedures, data verification, data storage (physical and electronic) protocols.</i></li> <li>• <i>Discuss any adjustment to assay data.</i></li> </ul>	<ul style="list-style-type: none"> <li>• Data detailed in this report has been reviewed and processed by Mitre Geophysics.</li> <li>• pXRF readings are intended as <b>screening data only</b>. No independent verification of pXRF values has been undertaken. Laboratory analyses (when completed) will be used to verify and report significant results.</li> </ul>
<i>Location of data points</i>	<ul style="list-style-type: none"> <li>• <i>Accuracy and quality of surveys used to locate drill holes (collar and down-hole surveys), trenches, mine workings and other locations used in Mineral Resource estimation.</i></li> <li>• <i>Specification of the grid system used.</i></li> <li>• <i>Quality and adequacy of topographic control.</i></li> </ul>	<ul style="list-style-type: none"> <li>• The navigation system used was a UTS PC104 based navigation system utilising a NovAtel WAAS (Wide Area Augmentation System) enabled GPS receiver, UTS navigate software, a full screen display with controls in front of the pilot to direct the flight and a NovAtel GPS antenna mounted on the helicopter tail. As many as 11 GPS and two WAAS satellites may be monitored at any one time. The positional</li> </ul>

personal use only

Criteria	JORC Code explanation	Commentary
		<p>accuracy or circular error probability (CEP) is 1.8m, with WAAS active, it is 1.0m. The co-ordinates of the block were set-up prior to the survey and the information was fed into the airborne navigation system.</p> <ul style="list-style-type: none"> <li>Altitude control used the FreeFlight Systems TRA-3000 radar altimeter with altitude range (40 to 2500ft), altitude accuracy (40 to 100 ft. <math>\pm 5</math> ft., 100 to 500 ft. <math>\pm 5\%</math>, 500 to 2500 ft. <math>\pm 7\%</math>) and sample rate of 10Hz.</li> <li>Co-ordinates are in GDA94 datum, Zone 53.</li> <li>A handheld GPS was used rock chip sample locations with an accuracy of <math>\pm 3</math>m.</li> </ul>
<p><b>Data spacing and distribution</b></p>	<ul style="list-style-type: none"> <li><i>Data spacing for reporting of Exploration Results.</i></li> <li><i>Whether the data spacing and distribution is sufficient to establish the degree of geological and grade continuity appropriate for the Mineral Resource and Ore Reserve estimation procedure(s) and classifications applied.</i></li> <li><i>Whether sample compositing has been applied.</i></li> </ul>	<ul style="list-style-type: none"> <li>The full EL 32279 was flown at 200m line-spacing with a central 40% of the survey flown at 100m infill line-spacing.</li> </ul>
<p><b>Orientation of data in relation to geological structure</b></p>	<ul style="list-style-type: none"> <li><i>Whether the orientation of sampling achieves unbiased sampling of possible structures and the extent to which this is known, considering the deposit type.</i></li> <li><i>If the relationship between the drilling orientation and the orientation of key mineralised structures is considered to</i></li> </ul>	<ul style="list-style-type: none"> <li>Flight lines were orientated northwest - southeast to run perpendicular to most of the structures and geology of the area.</li> </ul>

Criteria	JORC Code explanation	Commentary
	<i>have introduced a sampling bias, this should be assessed and reported if material.</i>	
<b>Sample security</b>	<ul style="list-style-type: none"> <li>The measures taken to ensure sample security.</li> </ul>	<ul style="list-style-type: none"> <li>All data was collected under strict security measure by UTS Geophysics Pty Ltd.</li> </ul>
<b>Audits or reviews</b>	<ul style="list-style-type: none"> <li>The results of any audits or reviews of sampling techniques and data.</li> </ul>	<ul style="list-style-type: none"> <li>Data checks and processing reviews were undertaken daily and at the completion of the program by the contractor.</li> <li>Review of the data was undertaken by an independent consultant Mitre Geophysics.</li> </ul>

personal use only

JORC Code, 2012 Edition – Table 1 report

## Section 2 Reporting of Exploration Results

(Criteria listed in the preceding section also apply to this section.)

Criteria	JORC Code explanation	Commentary
<b>Mineral tenement and land tenure status</b>	<ul style="list-style-type: none"> <li><i>Type, reference name/number, location and ownership including agreements or material issues with third parties such as joint ventures, partnerships, overriding royalties, native title interests, historical sites, wilderness or national park and environmental settings.</i></li> <li><i>The security of the tenure held at the time of reporting along with any known impediments to obtaining a licence to operate in the area.</i></li> </ul>	<ul style="list-style-type: none"> <li>Tenement includes Oonagalabi (EL32279) for a total of 145.3km<sup>2</sup> and 46 sub-blocks.</li> <li>EL32279 is owned by Kalk Exploration Pty. Ltd., a 100% owned entity of Litchfield Minerals Limited. The tenement is located approximately 125km northeast of Alice Springs on pastoral leases.</li> <li>The tenement is in good standing and there are no known impediments.</li> </ul>
<b>Exploration done by other parties</b>	<ul style="list-style-type: none"> <li><i>Acknowledgment and appraisal of exploration by other parties.</i></li> </ul>	<ul style="list-style-type: none"> <li>A summary of previous EL32279 exploration and mining is presented below:</li> <li>Oonagalabi was discovered in the 1930's.</li> <li>In 1970, Russgar Minerals completed regional mag-rad survey, VLF_EM survey, ground magnetic survey, single line resistivity traverse and 14 drillholes.</li> <li>In 1971, Geopeko completed limited IP.</li> </ul>

personal use only

Criteria	JORC Code explanation	Commentary
		<ul style="list-style-type: none"> <li>• 1979, Amoco completed photo-interpretation, rock chip sampling and drilling (8 holes).</li> <li>• 1981 D’Dor Mining NL completed limited dipole-dipole IP.</li> <li>• Between 1990 – 1996 on EL 6940 Clarence River Finance Group explored for garnet in the Florence and Maud Creeks, collecting 15 samples that averaged 4.4% garnet.</li> <li>• Between 1997 – 2000 on EL 9420 Clarence River Finance Group completed garnet exploration north of Oonagalabi EL32279. In 2007, ML 22624 was applied for to cover the central Oonagalabi deposit and surrounding proximal alluvial systems (outside 2025 bulk sampling area). No work was completed and the ML was relinquished in 2019.</li> <li>• Silex 2009 completed pole-dipole IP 1 x diamond hole.</li> </ul>
<b>Geology</b>	<ul style="list-style-type: none"> <li>• <i>Deposit type, geological setting and style of mineralisation.</i></li> </ul>	<ul style="list-style-type: none"> <li>• The Oonagalabi-type mineralisation is considered to be either skarn-related, sediment-hosted or carbonate replacement with potential for high-grade remobilised breccia zones similar to the Jervois deposit. EL32279 falls within one of Geoscience Australia’s IOCG high potential zones.</li> <li>• The project lies within the Harts Range that represents a package of multiply deformed and metamorphosed sedimentary and igneous intrusive rock.</li> </ul>

personal use only

Criteria	JORC Code explanation	Commentary
<p><i>Drill hole Information</i></p>	<ul style="list-style-type: none"> <li>• A summary of all information material to the understanding of the exploration results including a tabulation of the following information for all Material drill holes:               <ul style="list-style-type: none"> <li>○ easting and northing of the drill hole collar</li> <li>○ elevation or RL (Reduced Level – elevation above sea level in metres) of the drill hole collar</li> <li>○ dip and azimuth of the hole</li> <li>○ down hole length and interception depth</li> <li>○ hole length.</li> </ul> </li> <li>• If the exclusion of this information is justified on the basis that the information is not Material and this exclusion does not detract from the understanding of the report, the Competent Person should clearly explain why this is the case.</li> </ul>	<ul style="list-style-type: none"> <li>• No new drilling reported.</li> </ul>
<p><i>Data aggregation methods</i></p>	<ul style="list-style-type: none"> <li>• In reporting Exploration Results, weighting averaging techniques, maximum and/or minimum grade truncations (e.g. cutting of high grades) and cut-off grades are usually Material and should be stated.</li> <li>• Where aggregate intercepts incorporate short lengths of high grade results and longer lengths of low grade results, the procedure used for such aggregation should be stated and some typical examples of such aggregations should be shown in detail.</li> <li>• The assumptions used for any reporting of metal equivalent values should be clearly stated.</li> </ul>	<ul style="list-style-type: none"> <li>• No aggregation methods were used.</li> </ul>

Criteria	JORC Code explanation	Commentary
<b>Relationship between mineralisation widths and intercept lengths</b>	<ul style="list-style-type: none"> <li>• <i>These relationships are particularly important in the reporting of Exploration Results.</i></li> <li>• <i>If the geometry of the mineralisation with respect to the drill hole angle is known, its nature should be reported.</i></li> <li>• <i>If it is not known and only the down hole lengths are reported, there should be a clear statement to this effect (e.g. ‘down hole length, true width not known’).</i></li> </ul>	<ul style="list-style-type: none"> <li>• No drilling results reported. .</li> </ul>
<b>Diagrams</b>	<ul style="list-style-type: none"> <li>• <i>Appropriate maps and sections (with scales) and tabulations of intercepts should be included for any significant discovery being reported These should include, but not be limited to a plan view of drill hole collar locations and appropriate sectional views.</i></li> </ul>	<ul style="list-style-type: none"> <li>• See figures within the main body of the announcement.</li> </ul>
<b>Balanced reporting</b>	<ul style="list-style-type: none"> <li>• <i>Where comprehensive reporting of all Exploration Results is not practicable, representative reporting of both low and high grades and/or widths should be practiced to avoid misleading reporting of Exploration Results.</i></li> </ul>	<ul style="list-style-type: none"> <li>• All available relevant information is presented.</li> </ul>
<b>Other substantive exploration data</b>	<ul style="list-style-type: none"> <li>• <i>Other exploration data, if meaningful and material, should be reported including (but not limited to): geological observations; geophysical survey results; geochemical survey results; bulk samples – size and method of treatment; metallurgical test results; bulk density, groundwater, geotechnical and rock characteristics; potential deleterious or contaminating substances.</i></li> </ul>	<ul style="list-style-type: none"> <li>• See the main body of this report for all pertinent observations and interpretations.</li> <li>• The occurrence of the so-called “Zinc Bush” plants, so termed by Litchfield Minerals, appears to act as geobotanical indicator in this area. Before VTEM ground-truthing, the ‘zinc bush’ had only been observed on mineralised outcropping Oonagalabi Formation.</li> </ul>

personal use only

Criteria	JORC Code explanation	Commentary
<i>Further work</i>	<ul style="list-style-type: none"> <li><i>The nature and scale of planned further work (e.g. tests for lateral extensions or depth extensions or large-scale step-out drilling).</i></li> <li><i>Diagrams clearly highlighting the areas of possible extensions, including the main geological interpretations and future drilling areas, provided this information is not commercially sensitive.</i></li> </ul>	<p>Future planned exploration includes:</p> <ul style="list-style-type: none"> <li>Field validation of Priority 1 conductors</li> <li>Earthworks for drillhole pads and tracks</li> <li>RC drilling of priority conductors, gold targets and the Bomb Diggity magnetic anomaly.</li> </ul>