

## MAJOR ~2KM GOLD-ANTIMONY CORRIDOR DEFINED AHEAD OF AMOCO MAIDEN DRILL PROGRAM

- **Soil assay results up to 351 ppm As, 21.0 ppb Au and 14.65 ppm Sb over +2 km of strike strongly aligning with interpreted NE-SW structural corridor** is highly encouraging, given the known mineralisation controls within the New England Fold Belt.
- Amoco priority area was identified through surface **rock samples of gold up to 17.9 g/t Au, antimony up to 0.7% Sb, and silver up to 80 g/t Ag**, located on interpreted structures.
- Amoco is located ~19km south-east of Larvotto's Hillgrove Antimony-Gold Project and ~14km east of the structural corridor hosting Koonenberry Gold's Enmore Project.
- **RC drill rig scheduled to mobilise to Amoco on the 29th of September for maiden drill program.**

**Critical Resources Limited** ('Critical Resources' or the 'Company', ASX:CRR) is pleased to announce the soil-geochemistry assay results from the Amoco Gold-Antimony Project (**Amoco**) (100% CRR) (EL9293) in the Armidale region of New South Wales (NSW) - Australia.

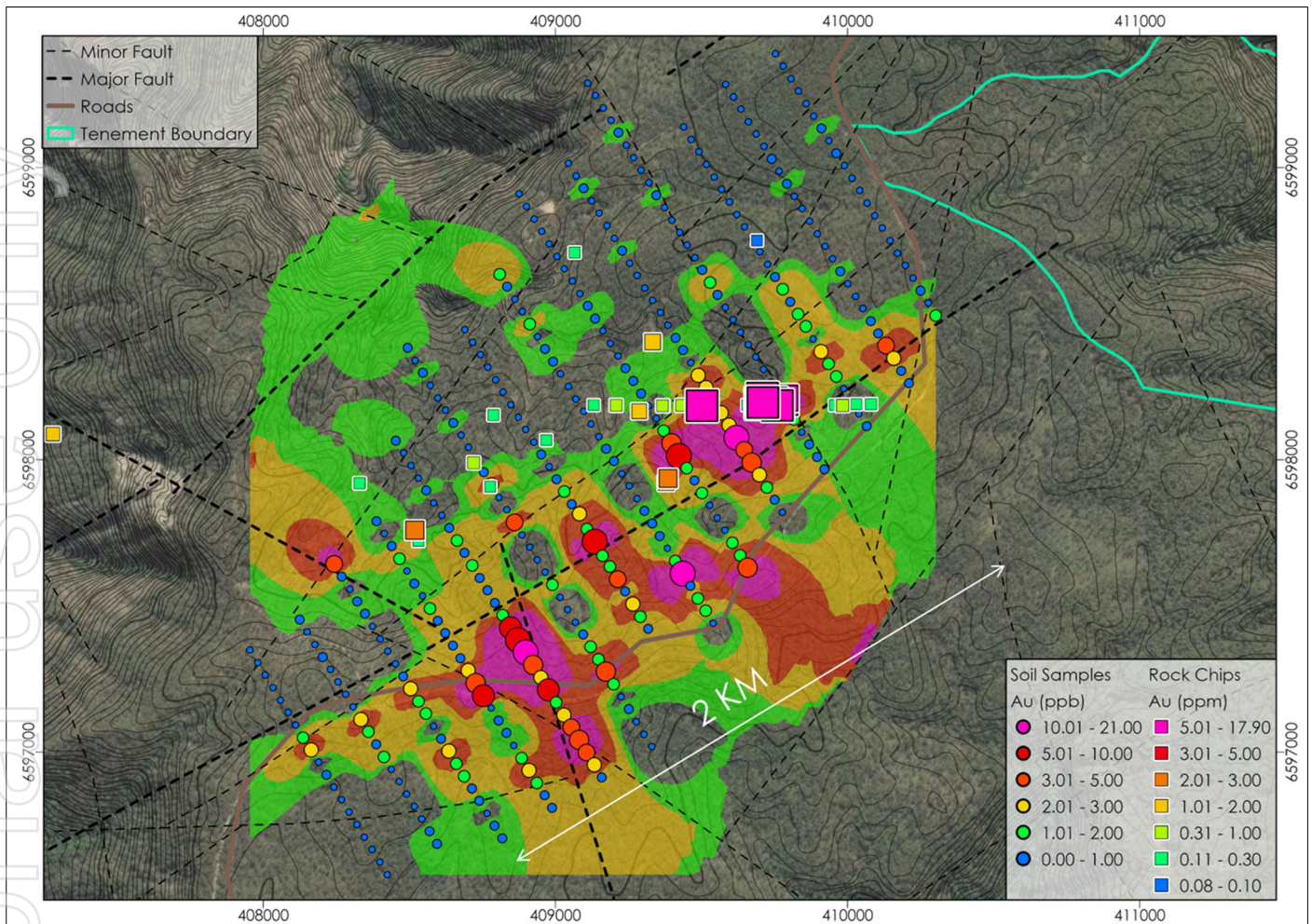
Soil geochemistry assay results highlight multiple large-scale gold (Au) (**Figure 1**), antimony (Sb) and arsenic (As) (**Figure 2**) anomalies, coincident with interpreted regional and local structures. The Company has received all the necessary statutory approvals from the NSW Resources Regulator with secured drill contractor confirmed.

**Critical Resources' Chief Executive Officer, Mr. Tim Wither, commented** *'The soil sampling results highlight mineralised trends over a +2km strike and encouragingly aligned with the interpreted structures, delivering several robust drill targets. Preparation for the maiden drill program continues with the RC drill contractor scheduled to mobilise to site on the 29<sup>th</sup> of September.*

*'Amoco represents a compelling drill target within the Armidale region's rich antimony-gold production history and recent exploration success at Koonenberry Gold's Enmore Project, highlights the discovery potential. The maiden drill program will give us a significant amount of geological insight into the potential at Amoco given the early-staged exploration phase, and we look forward to updating shareholders once drilling has commenced'*.

### Systematic Soil Geochemistry Survey Defines Robust Gold-Antimony Corridor at Amoco

The completed soil geochemistry program was undertaken across a ~3 km x ~2 km grid targeting a structurally interpreted SW-NE corridor to improve the geological understanding of the priority Amoco target area ahead of drill testing. The soil geochemistry survey collected 364 samples on a 200 m x 50 m spacing, delivering detailed geochemical coverage across priority zones. **The program returned compelling multi-element anomalies that strongly align with both regional and local structural trends, reinforcing the corridor's potential to host significant mineral systems.**



**Figure 1** – Amoco gold-in-soil geochemistry assay results with rock chip samples and major/minor interpreted fault structures (black dashed lines), gold-in-soil contours green (0.5-1 ppb Au) orange (1-2 ppb Au) red (2-3.5 ppb Au) and pink (3.5-21 ppb Au)

#### Key highlights of completed soil-geochemistry survey:

- **Gold (Au):** Anomalous gold values across multiple trends, peaking at 21.0 ppb Au. Coherent corridors of elevated mineralisation extend over strike lengths of up to ~2 km, defining a priority corridor (**Figure 1**).
- **Arsenic (As):** strong arsenic values up to 351 ppm As, outlining broad geochemical halos that act as effective pathfinders to Au-Sb mineralisation (**Figure 2**).
- **Antimony (Sb):** Up to 14.65 ppm Sb, spatially coincident with gold anomalies, supporting the presence of a gold-antimony system consistent with known regional gold-antimony mineralisation styles.

The geochemical data define multiple overlapping/correlated Au-Sb-As trends, with local silver (Ag) anomalies reinforcing these patterns. This coherent multi-element response validates the exploration model and indicates that the mineralised system at Amoco is structurally controlled and potentially extensive.

Integration of the soil geochemistry with previously reported rock sampling up to 17.9 g/t Au and 80 g/t Ag (ASX:CRR announcement 4 June 2025) and geological mapping now provides a strong technical foundation for undertaking a maiden drill program to test these targets.

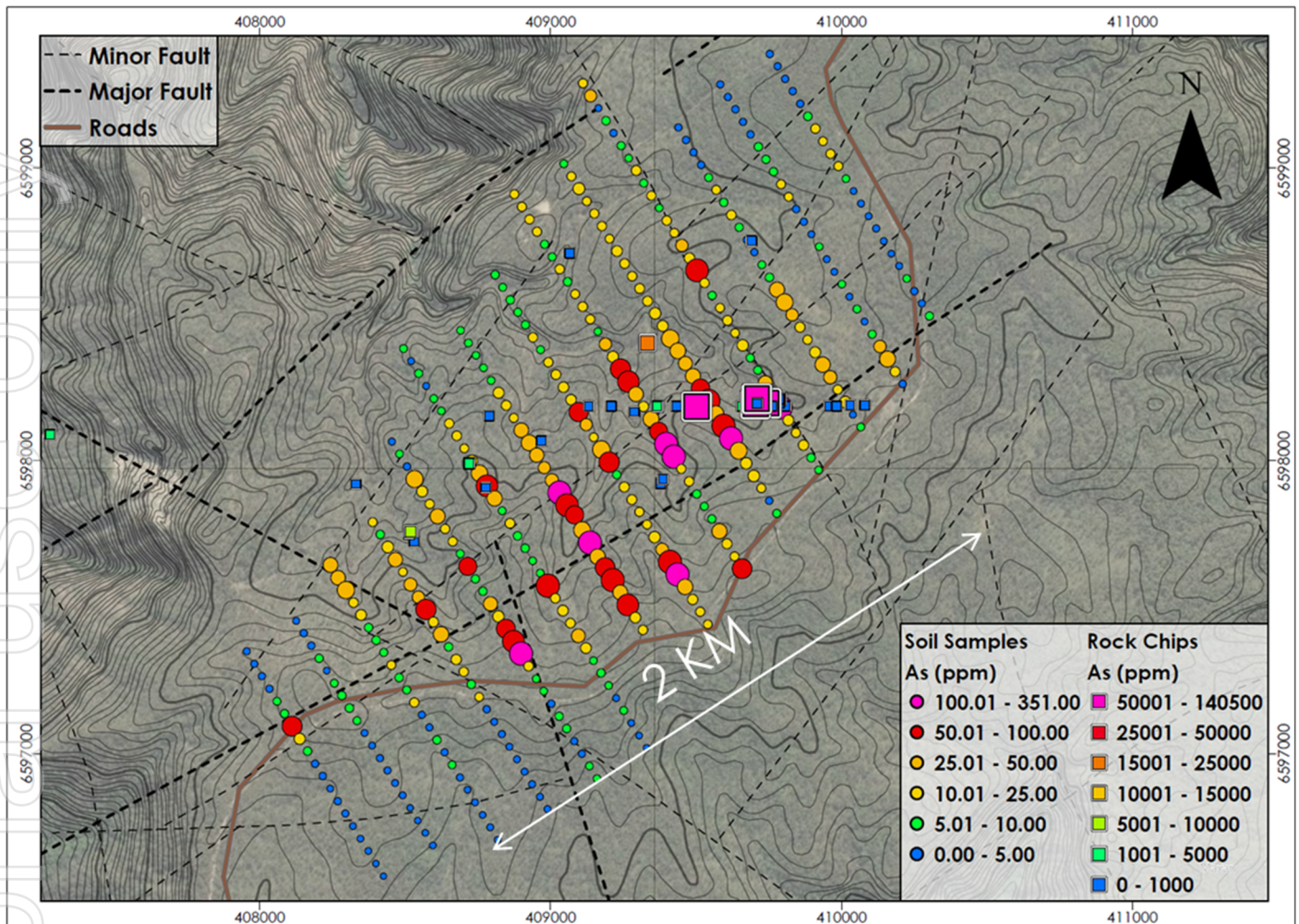


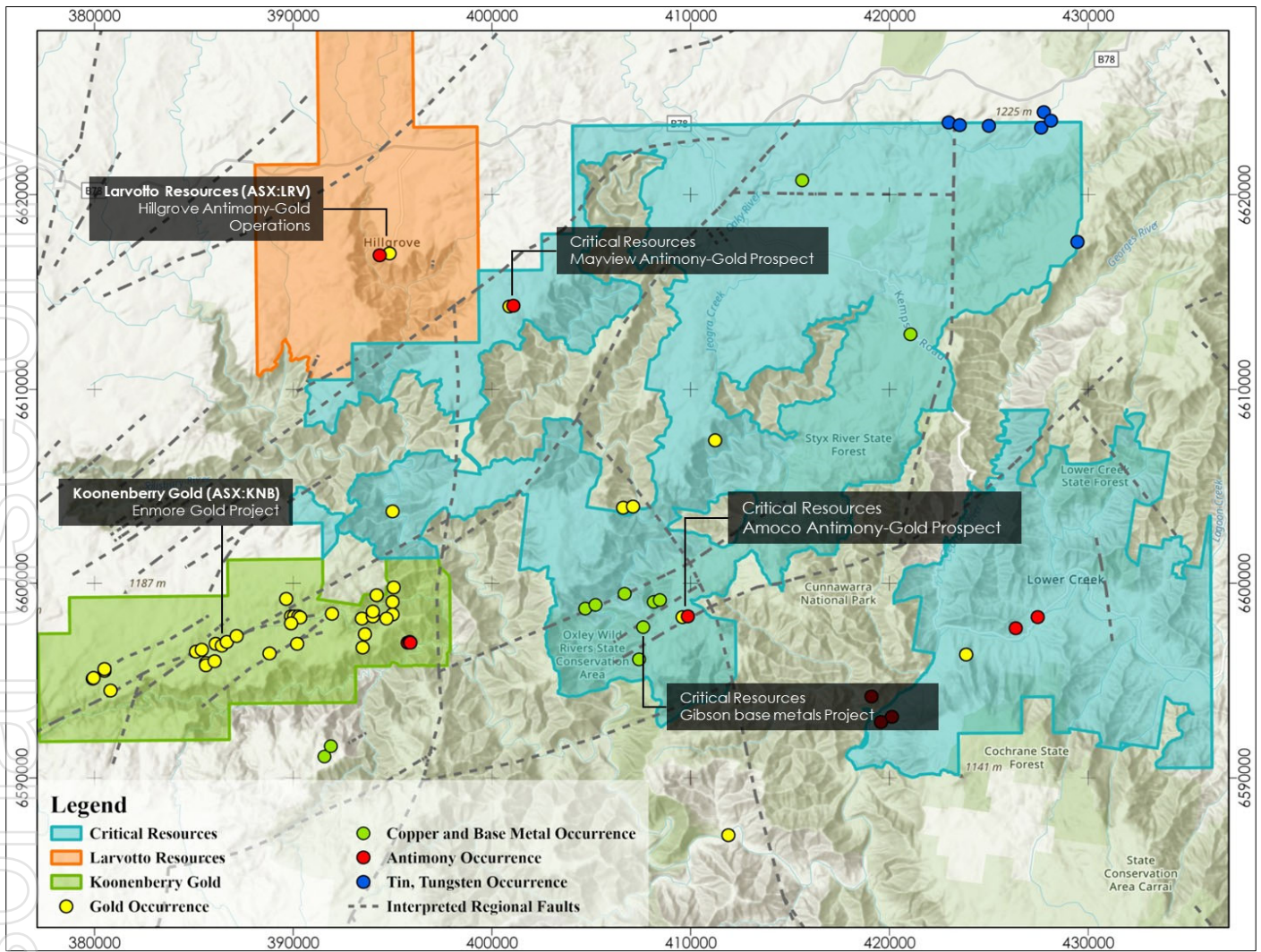
Figure 2 – Amoco - arsenic-in-soils with rock samples and 1m contours lines.

## Amoco Antimony-Gold Project

The Amoco Gold-Antimony Project is located in the fertile New England fold belt ~19km southeast of Larvotto Resources Limited's (ASX:LRV) Hillgrove Antimony-Gold operations and ~14km east of Koonenberry Gold's (ASX:KNB) Enmore Gold Project along regional controlling structural trends (Figure 3).

The controlling structures within this gold-antimony rich portion of the New England Fold Belt typically occur along multiple, SW-NE faults that can extend horizontally and vertically for hundreds of metres. Nearby Larvotto Resources Hillgrove Antimony-Gold project underscores the potential scale of the Amoco project's mineralisation zone.

During the field mapping, fifteen rock chip samples were collected, all of which returned anomalous gold results greater than 0.8 g/t Au and up to 15.1 g/t Au and strongly correlated with legacy results that had previously reported **gold mineralisation up to 17.9 g/t Au, antimony up to 0.53% Sb, and silver up to 80 g/t Ag** (ASX:CRR announcement 4 June 2025).



**Figure 3** - Location Plan of Critical Resources - Halls Peak tenure and regionally significant Hillgrove and Enmore with regional structures.

## Next Steps at Amoco

- Preparation for maiden drill program continues with secured drill contractor scheduled to mobilise on the 29th of September to the Amoco site, with expectations to commence drilling early October.
- The Company continues to progress permitting and approval process for the Mayview Antimony-Gold Project with the NSW Resources Regulator and landowner.

**This announcement has been approved for release by the Board of Directors of Critical Resources.**

For further information, please visit [www.criticalresources.com](http://www.criticalresources.com) or contact:

**E:** [info@criticalresources.com.au](mailto:info@criticalresources.com.au)

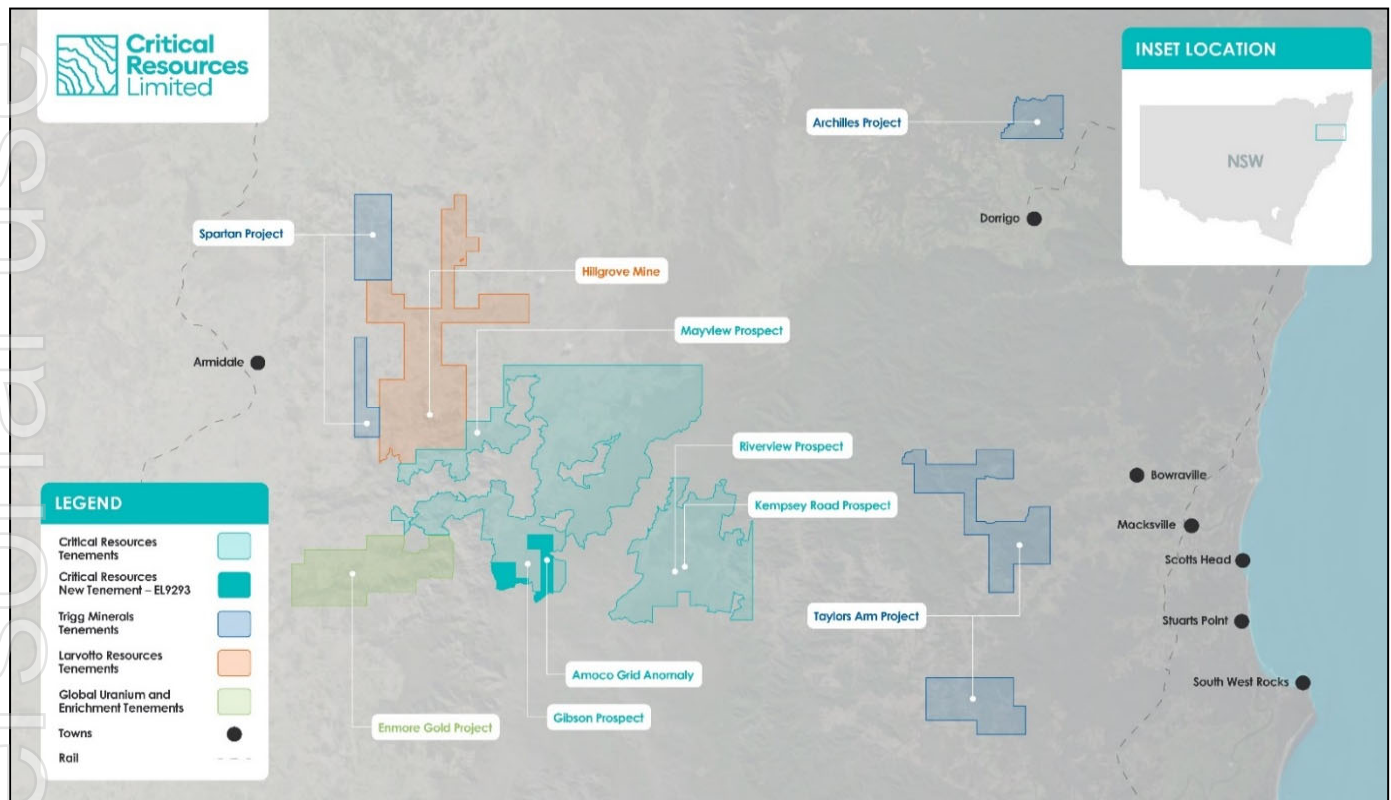
**P:** +61 (8) 9465 1024

## ABOUT CRITICAL RESOURCES LIMITED

Critical Resources Limited (ASX:CRR) is a gold-antimony-lithium explorer with assets in Canada, Australia and New Zealand. The flagship Mavis Lake Lithium Project in Ontario-Canada anchors the battery metals focus, complemented by the Halls Peak gold-antimony and base metals projects in New South Wales-Australia and gold-antimony projects centered in the Otago region – New Zealand. This diversified portfolio positions the Company to create value through critical minerals supply chain, with exposure to the rising gold market.

The Company's Mavis Lake Lithium Project, located in Ontario, Canada has defined a maiden inferred resource of 8 million tonnes at 1.07% Li<sub>2</sub>O, with significant potential to expand this resource.

The Hall Peak Base Metals Project is located ~87km south-east of Armidale, New South Wales, Australia. The Company has defined a maiden Inferred Mineral Resource of 884,000t @ 3.7% Zn, 1.5% Pb, 0.4% Cu, 30g/t Ag and 0.1g/t Au. The Halls Peak Project area includes two advanced antimony-gold prospects – Mayview and Amoco.



**Figure 4 - Project Location map showing Halls Peak project area proximity to significant Antimony-Gold projects in the Armidale region, NSW, Australia.**

### Halls Peak – Gibson Base Metals Project - Mineral Resource Estimate

Halls Peak Project JORC Classification	Zn Cut-Off grade (%)	Tonnage (Mt)	Zn (%)	Pb (%)	Cu (%)	Ag ppm (g/t)	Au ppm (g/t)
Indicated	-	-	-	-	-	-	-
Inferred	2.0	0.84	3.7	1.5	0.44	30	0.1
<b>Total*</b>	-	<b>0.84</b>	<b>3.7</b>	<b>1.5</b>	<b>0.44</b>	<b>30</b>	<b>0.1</b>

\*Reported at a cut-off grade of 2% Zn for an open pit mining scenario. Estimation for the model is from the generation of a rotated block model, with blocks dipping 55° >330°. Classification is according to the JORC Code Mineral Resource categories. Refer to the ASX:CRR announcement 30 June 2023.

### Mavis Lake Lithium Project - Mineral Resource Estimate

Mavis Lake -Lithium Project JORC Classification	Li <sub>2</sub> O Cut-Off grade (%)	Tonnage (Mt)	Li <sub>2</sub> O (%)
Inferred	0.3	8.0	1.07
<b>Total*</b>		<b>8.0</b>	<b>1.07</b>

\*Reported at a cut-off grade of 0.30% Li<sub>2</sub>O for an open pit mining scenario. Estimation for the model is by inverse distance weighting. Classification is according to the JORC Code Mineral Resource categories. Refer to ASX:CRR announcement 5 May 2023.

## COMPETENT PERSON STATEMENT

The information in this ASX Announcement that relates to Exploration Results is based on information compiled by Mr Michael Leu, a Competent Person who is a member of the Australian Institute of Geoscientists (AIG) and the Australian Institute of Mining and Metallurgy (AusIMM) and a consultant of Critical Resources. Mr Leu has sufficient experience that is relevant to the style of mineralisation and type of deposit under consideration and to the activity being undertaken to qualify as a Competent Person as defined in the 2012 Edition of the "Australasian Code for Reporting of Exploration Results, Mineral Resources and Ore Reserves". Mr Leu consents to the inclusion in this Announcement of the matters based on his information in the form and context in which it appears.

## PREVIOUSLY REPORTED INFORMATION

This document contains information relating to the Mineral Resource estimate for the Mavis Lake Lithium Project, which is extracted from the Company's ASX announcement dated 5 May 2023 and reported in accordance with the 2012 JORC Code and available for viewing at [criticalresources.com.au](http://criticalresources.com.au). The Company confirms that it is not aware of any new information or data that materially affects the information included in the original announcement and that all material assumptions and technical parameters underpinning the Mineral Resource estimate continue to apply and have not materially changed.

This information in this ASX Announcement that relates to the Halls Peak Mineral Resource Estimate is extracted from the ASX market announcement dated 30 June 2023 and reported in accordance with the 2012 JORC Code and available for viewing at [criticalresources.com.au](http://criticalresources.com.au). The Company confirms that it is not aware of any new information or data that materially affects the information included in any original announcement and that all material assumptions and technical parameters underpinning the estimates in the original market announcement continue to apply and have not materially changed.

This announcement contains information on the Halls Peak Project extracted from ASX market announcements dated 22 November 2021, 30 June 2023, 28 August 2024, 12 September 2024, 3 October 2024, 8 November 2024, 19 November 2024, 4 December 2024, 16 December 2024, 12 February 2025, 20 March 2025, 4 June 2025 and 2 July 2025 reported in accordance with the 2012 JORC Code and available for viewing at [www.criticalresources.com.au](http://www.criticalresources.com.au). The Company confirms that it is not aware of any new information or data that materially affects the information included in any original ASX market announcement.

## FORWARD LOOKING STATEMENTS

This announcement may contain certain forward-looking statements and projections. Such forward-looking statements/projections are estimates for discussion purposes only and should not be relied upon. Forward-looking statements/projections are inherently uncertain and may therefore differ materially from results ultimately achieved. Critical Resources Limited does not make any representations and provides no warranties concerning the accuracy of the projections and disclaims any obligation to update or revise any forward-looking statements/projections based on new information, future events or otherwise, except to the extent required by applicable laws. While the information contained in this report has been prepared in good faith, neither Critical Resources Limited or any of its directors, officers, agents, employees or advisors give any representation or warranty, express or implied, as to the fairness, accuracy, completeness or correctness of the information, opinions and conclusions contained in this announcement.

## Appendix A

Table 1: Au, Ag, Sb, and As values from soil-geochemistry survey at Amoco gold-antimony project

Sample ID	Easting	Northing	Au (ppb)	Ag (ppm)	As (ppm)	Sb (ppm)
AS0001	407955	6597349	0.001	0.001	4	0.61
AS0002	407981	6597306	0.001	0.001	4	0.71
AS0003	408007	6597264	0.001	0.001	4	0.69
AS0004	408033	6597221	0.001	0.08	5	0.83
AS0005	408059	6597178	0.001	0.06	7	0.84
AS0006	408085	6597136	0.001	0.05	9	0.79
AS0007	408111	6597093	0.001	0.11	60	1.95
AS0008	408137	6597050	2	0.11	22	2.12
AS0009	408164	6597008	3	0.32	10	2.24
AS0010	408190	6596965	0.001	0.14	5	0.88
AS0011	408216	6596923	1	0.15	5	0.83
AS0012	408242	6596880	0.001	0.28	2	0.38
AS0013	408268	6596837	0.001	0.32	5	0.44
AS0014	408294	6596795	0.001	0.06	4	0.45
AS0015	408320	6596752	0.001	0.07	2	0.42
AS0016	408346	6596709	0.001	0.06	2	0.46
AS0017	408373	6596667	0.001	0.07	2	0.35
AS0018	408399	6596624	0.001	0.06	1	0.32
AS0019	408425	6596581	0.001	0.001	0.001	0.25
AS0020	408125	6597453	1	0.19	3	0.65
AS0021	408151	6597411	0.001	0.07	5	1.45
AS0022	408177	6597368	0.001	0.07	5	0.78
AS0023	408204	6597325	1	0.001	9	0.98
AS0024	408230	6597283	0.001	0.06	2	0.46
AS0025	408256	6597240	0.001	0.15	7	1.88
AS0026	408282	6597198	0.001	0.15	10	0.65
AS0027	408308	6597155	0.001	0.11	10	1.35
AS0028	408334	6597112	3	0.16	7	2.24
AS0029	408360	6597070	2	0.15	3	0.69
AS0030	408386	6597027	1	0.16	3	0.87
AS0031	408413	6596984	2	0.41	4	0.79
AS0032	408439	6596942	0.001	0.14	4	0.59
AS0033	408465	6596899	0.001	0.13	3	0.36
AS0034	408491	6596857	0.001	0.08	3	0.27
AS0035	408517	6596814	0.001	0.09	1	0.29
AS0036	408543	6596771	0.001	0.07	1	0.23
AS0037	408569	6596729	1	0.06	2	0.3
AS0038	408595	6596686	1	0.15	2	0.39
AS0039	408243	6597644	4	1.47	38	13.41
AS0079	408832	6597066	1	0.13	4	1.1
AS0080	408858	6597023	0.001	0.2	3	0.64
AS0081	408884	6596980	2	0.11	3	0.53
AS0082	408910	6596938	3	0.17	3	0.54
AS0083	408936	6596895	2	0.14	4	0.54
AS0084	408963	6596852	1	0.11	3	0.55
AS0085	408989	6596810	1	0.17	3	0.41
AS0086	408454	6598065	1	0.07	4	1.95
AS0087	408480	6598023	0.001	0.06	6	0.82
AS0088	408506	6597980	0.001	0.07	5	0.75
AS0089	408532	6597937	0.001	0.13	48	1.9
AS0090	408558	6597895	1	0.001	21	1.08
AS0091	408584	6597852	0.001	0.001	13	0.8
AS0092	408611	6597810	0.001	0.06	39	2.01
AS0093	408637	6597767	1	0.06	14	2.2
AS0094	408663	6597724	2	0.001	13	2.88

Sample ID	Easting	Northing	Au (ppb)	Ag (ppm)	As (ppm)	Sb (ppm)
AS0040	408269	6597600	1	0.22	37	1.9
AS0041	408296	6597558	0.001	0.15	49	1.87
AS0042	408322	6597515	1	0.13	15	1.1
AS0043	408348	6597473	1	0.09	20	1.02
AS0044	408374	6597430	0.001	0.08	10	0.64
AS0045	408400	6597387	0.001	0.06	10	0.98
AS0046	408426	6597345	0.001	0.17	8	0.91
AS0047	408452	6597302	0.001	0.12	12	1.49
AS0048	408479	6597259	1	0.17	10	1.65
AS0049	408505	6597217	3	0.15	8	1.87
AS0050	408531	6597174	2	0.1	14	4.81
AS0051	408557	6597132	2	0.32	4	1.1
AS0052	408583	6597089	0.001	0.18	4	0.6
AS0053	408609	6597046	1	0.1	9	0.93
AS0054	408635	6597004	3	0.32	4	1.1
AS0055	408661	6596961	2	0.1	7	1.9
AS0056	408688	6596918	2	0.21	4	0.64
AS0057	408714	6596876	1	0.12	2	0.52
AS0058	408740	6596833	1	0.3	3	0.4
AS0059	408766	6596790	0.001	0.2	2	0.29
AS0060	408792	6596748	1	0.25	3	0.4
AS0061	408818	6596705	1	0.19	3	0.33
AS0062	408388	6597790	1	0.12	12	0.88
AS0063	408414	6597748	0.001	0.001	10	1.01
AS0064	408440	6597705	1	0.05	24	1.74
AS0065	408466	6597662	2	0.05	36	3.11
AS0066	408492	6597620	0.001	0.07	11	3.38
AS0067	408518	6597577	1	0.05	30	2.74
AS0068	408545	6597534	0.001	0.001	27	2.51
AS0069	408571	6597492	2	0.001	62	4.11
AS0070	408597	6597449	1	0.06	17	1.78
AS0071	408623	6597407	1	0.09	41	1.81
AS0072	408649	6597364	1	0.16	10	1.5
AS0073	408675	6597321	1	0.19	18	2.89
AS0074	408701	6597279	3	0.42	14	3.95
AS0075	408727	6597236	5	0.45	10	3.25
AS0076	408754	6597193	6	0.32	11	4.17
AS0077	408780	6597151	0.001	0.11	5	1.17
AS0078	408806	6597108	1	0.13	3	0.93
AS0122	408703	6598042	0.001	0.001	11	1.29
AS0123	408729	6597999	0.001	0.06	22	1.55
AS0124	408755	6597957	1	0.11	45	5.36
AS0125	408781	6597914	3	0.14	68	3.71
AS0126	408807	6597871	0.001	0.06	40	2.56
AS0127	408833	6597829	0.001	0.001	7	1.73
AS0128	408860	6597786	4	0.09	16	2.67
AS0129	408886	6597743	0.001	0.001	10	2.61
AS0130	408912	6597701	0.001	0.09	10	2.66
AS0131	408938	6597658	0.001	0.11	6	1.93
AS0132	408964	6597616	0.001	0.11	7	2.31
AS0133	408990	6597573	2	0.21	79	3.66
AS0134	409016	6597530	0.001	0.2	15	1.9
AS0135	409042	6597488	0.001	0.15	20	3.49
AS0136	409068	6597445	0.001	0.11	15	3.07
AS0137	409095	6597402	1	0.14	33	2.54

AS0095	408689	6597682	1	0.09	8	1.42
AS0096	408715	6597639	2	0.11	52	2.97
AS0097	408741	6597596	1	0.11	9	3.22
AS0098	408767	6597554	1	0.12	9	2.65
AS0099	408793	6597511	1	0.16	35	4.46
AS0100	408820	6597468	2	0.22	23	6.57
AS0101	408846	6597426	6	0.24	56	4.01
AS0102	408872	6597383	8	0.27	69	3.17
AS0103	408898	6597341	18	0.19	226	6.8
AS0104	408924	6597298	5	0.44	15	3.09
AS0105	408950	6597255	3	0.41	6	1.73
AS0106	408976	6597213	6	0.48	6	2
AS0107	409002	6597170	2	0.25	5	1.19
AS0108	409029	6597127	3	0.34	9	2.54
AS0109	409055	6597085	4	0.29	9	3.77
AS0110	409081	6597042	5	0.43	4	2.07
AS0111	409107	6596999	4	0.81	4	1.68
AS0112	409133	6596957	3	0.24	6	2
AS0113	409159	6596914	1	0.18	6	1
AS0114	408494	6598383	1	0.07	7	1.03
AS0115	408520	6598340	0.001	0.001	3	0.53
AS0116	408546	6598298	1	0.07	8	1.29
AS0117	408572	6598255	0.001	0.06	3	0.95
AS0118	408598	6598212	0.001	0.06	7	1.19
AS0119	408624	6598170	0.001	0.06	6	0.95
AS0120	408651	6598127	1	0.1	14	2.28
AS0121	408677	6598085	0.001	0.08	15	1.64
AS0167	409161	6597672	2	0.16	41	2.28
AS0168	409187	6597635	2	0.15	59	3.49
AS0169	409213	6597592	4	0.23	83	3.8
AS0170	409239	6597550	1	0.08	38	3.79
AS0171	409265	6597507	3	0.13	68	3.63
AS0172	409291	6597464	2	0.16	20	2.15
AS0173	409317	6597422	1	0.12	14	2.08
AS0185	408809	6598635	2	0.07	9	0.66
AS0186	408835	6598592	1	0.05	7	0.58
AS0187	408861	6598549	0.001	0.001	10	0.95
AS0188	408887	6598507	0.001	0.001	8	0.68
AS0189	408913	6598464	2	0.001	9	1.07
AS0190	408939	6598421	0.001	0.09	14	1.09
AS0191	408965	6598379	1	0.001	7	0.82
AS0192	408992	6598336	1	0.001	14	1.39
AS0193	409018	6598294	0.001	0.001	16	1.58
AS0194	409044	6598251	0.001	0.08	19	1.17
AS0195	409070	6598208	0.001	0.07	19	1.35
AS0196	409096	6598166	0.001	0.08	57	12.25
AS0197	409122	6598123	0.001	0.07	26	0.78
AS0198	409148	6598080	0.001	0.001	11	0.72
AS0199	409174	6598038	1	0.13	50	2.04
AS0200	409201	6597995	1	0.001	62	3.44
AS0201	409227	6597952	0.001	0.001	9	2.09
AS0202	409253	6597910	0.001	0.08	17	2.28
AS0203	409279	6597867	0.001	0.07	16	4.22
AS0204	409305	6597825	1	0.16	13	4.04
AS0205	409331	6597782	1	0.1	12	2.78
AS0206	409357	6597739	1	0.09	23	2.97
AS0207	409383	6597697	0.001	0.07	28	2.88
AS0208	409410	6597654	2	0.1	88	3.13
AS0209	409436	6597611	21	0.09	351	14.65
AS0210	409462	6597569	1	0.17	41	2.09

AS0138	409121	6597360	2	0.25	20	3.95
AS0139	409147	6597317	2	0.26	6	1.53
AS0140	409173	6597275	5	0.47	9	2.8
AS0141	409199	6597232	2	0.24	6	1.49
AS0142	409225	6597189	0.001	0.22	3	0.81
AS0143	409251	6597147	1	0.16	7	0.75
AS0144	409277	6597104	0.001	0.1	2	0.38
AS0145	409304	6597061	0.001	0.08	2	0.52
AS0146	409330	6597019	0.001	0.1	2	0.58
AS0149	408690	6598445	0.001	0.001	6	0.67
AS0150	408717	6598402	0.001	0.001	7	0.66
AS0151	408743	6598360	0.001	0.07	6	0.9
AS0152	408769	6598317	0.001	0.06	6	0.8
AS0153	408795	6598274	0.001	0.001	7	1.32
AS0154	408821	6598232	0.001	0.08	21	3.69
AS0155	408847	6598189	0.001	0.16	16	2.01
AS0156	408873	6598146	0.001	0.13	12	1.65
AS0157	408899	6598104	0.001	0.17	37	5.41
AS0158	408926	6598061	0.001	0.08	43	1.6
AS0159	408952	6598019	1	0.1	36	6.26
AS0160	408978	6597976	0.001	0.05	26	2.55
AS0161	409004	6597933	1	0.001	31	3.02
AS0162	409030	6597891	2	0.001	105	4.74
AS0163	409056	6597848	1	0.11	73	2.17
AS0164	409082	6597815	3	0.21	53	2.13
AS0165	409108	6597763	2	0.09	47	3.18
AS0166	409135	6597720	9	0.15	123	6.25
AS0226	409058	6598611	0.001	0.09	10	0.72
AS0227	409084	6598569	0.001	0.05	12	1.06
AS0228	409110	6598526	1	0.05	15	1.91
AS0229	409136	6598483	1	0.05	13	1.18
AS0230	409162	6598441	0.001	0.001	6	0.91
AS0231	409188	6598398	0.001	0.09	27	2.11
AS0232	409214	6598355	0.001	0.15	22	1.59
AS0233	409240	6598313	1	0.11	62	3.73
AS0234	409267	6598270	1	0.06	67	2.8
AS0235	409293	6598227	1	0.11	38	2.73
AS0236	409319	6598185	0.001	0.06	18	2.54
AS0237	409345	6598142	0.001	0.16	43	3.8
AS0238	409371	6598100	2	0.1	52	3.6
AS0239	409397	6598057	5	0.05	200	6.81
AS0240	409423	6598014	8	0.24	249	8.65
AS0241	409449	6597972	2	0.24	13	2.55
AS0242	409476	6597929	1	0.25	14	3.11
AS0243	409502	6597886	2	0.18	9	2.21
AS0244	409528	6597844	0.001	0.12	8	1.54
AS0245	409554	6597801	0.001	0.19	9	1.74
AS0246	409580	6597759	0.001	0.12	39	3.09
AS0247	409606	6597716	2	0.39	17	2.03
AS0248	409632	6597673	2	0.3	12	2.41
AS0249	409658	6597631	5	0.24	59	3.56
AS0257	409045	6599014	0.001	0.001	7	0.69
AS0258	409071	6598971	0.001	0.11	12	0.49
AS0259	409097	6598929	1	0.24	25	0.6
AS0260	409124	6598886	0.001	0.001	11	0.42
AS0261	409150	6598844	0.001	0.14	13	0.59
AS0262	409176	6598801	0.001	0.08	13	0.59
AS0263	409202	6598758	0.001	0.07	11	0.68
AS0264	409228	6598716	1	0.06	20	0.85
AS0265	409254	6598673	0.001	0.07	15	0.92

AS0211	409488	6597526	2	0.26	18	1.36
AS0212	409514	6597484	2	0.29	13	1.16
AS0213	409540	6597441	0.001	0.17	11	1.24
AS0219	408875	6598910	0.001	0.05	12	1.17
AS0220	408901	6598867	0.001	0.001	13	0.9
AS0221	408927	6598824	0.001	0.24	13	0.77
AS0222	408953	6598782	0.001	0.14	13	0.74
AS0223	408979	6598739	0.001	0.09	9	0.63
AS0224	409005	6598696	0.001	0.06	8	0.8
AS0225	409031	6598654	0.001	0.21	14	0.78
AS0276	409542	6598204	1	0.08	77	3.32
AS0277	409568	6598161	3	0.15	41	2.45
AS0278	409594	6598119	3	0.17	77	2.98
AS0279	409620	6598076	19	0.22	217	13.23
AS0280	409646	6598034	4	0.27	47	5.65
AS0281	409672	6597991	5	0.36	23	3.34
AS0282	409698	6597948	3	0.15	24	4.99
AS0283	409724	6597906	2	0.26	12	2.63
AS0284	409751	6597863	1	0.12	5	0.96
AS0285	409777	6597820	0.001	0.1	8	1.13
AS0294	409111	6599289	0.001	0.05	13	0.69
AS0295	409137	6599246	0.001	0.001	26	0.69
AS0296	409164	6599204	0.001	0.001	3	0.3
AS0297	409190	6599161	0.001	0.06	10	0.42
AS0298	409216	6599119	1	0.08	5	0.21
AS0299	409242	6599076	0.001	0.15	8	0.5
AS0300	409268	6599033	0.001	0.001	6	0.46
AS0301	409294	6598991	0.001	0.06	16	0.6
AS0302	409320	6598948	0.001	0.05	8	0.43
AS0303	409346	6598905	1	0.001	13	0.59
AS0304	409373	6598863	0.001	0.001	6	0.64
AS0305	409399	6598820	0.001	0.05	14	0.7
AS0306	409425	6598778	0.001	0.08	12	0.8
AS0307	409451	6598735	0.001	0.05	27	0.61
AS0308	409477	6598692	0.001	0.26	19	1.04
AS0309	409503	6598650	1	0.13	73	3.2
AS0310	409529	6598607	2	0.07	14	2.93
AS0311	409555	6598564	1	0.07	9	1.31
AS0312	409582	6598522	0.001	0.001	12	2.23
AS0313	409608	6598479	0.001	0.06	16	2.86
AS0314	409634	6598436	0.001	0.06	11	1.86
AS0315	409660	6598394	0.001	0.08	23	1.92
AS0316	409686	6598351	0.001	0.001	9	1.29
AS0317	409712	6598309	0.001	0.06	9	1.6
AS0318	409738	6598266	0.001	0.08	35	2.34
AS0319	409764	6598223	1	0.12	35	2.17
AS0320	409791	6598181	7	0.19	139	3.59
AS0321	409817	6598138	2	0.14	20	1.69
AS0322	409843	6598095	0.001	0.21	13	2.14
AS0323	409869	6598053	1	0.09	18	2.65
AS0324	409895	6598010	1	0.15	10	2.39
AS0325	409921	6597968	1	0.09	6	1.81
AS0349	409439	6599138	0.001	0.13	5	0.47
AS0419	410079	6598475	1	0.2	3	0.5
AS0420	410105	6598432	1	0.09	8	1.27
AS0421	410132	6598390	4	0.19	27	4.58
AS0422	410158	6598347	3	0.19	43	2.59
AS0423	410184	6598304	1	0.08	16	1.82
AS0424	410210	6598262	1	0.27	5	0.72
AS0456	409753	6599389	0.001	0.07	5	0.71

AS0266	409280	6598630	0.001	0.001	14	0.89
AS0267	409306	6598588	0.001	0.13	16	1.38
AS0268	409333	6598545	0.001	0.1	16	0.98
AS0269	409359	6598503	0.001	0.07	23	1.71
AS0270	409385	6598460	0.001	0.11	21	0.65
AS0271	409411	6598417	1	0.19	50	3.7
AS0272	409437	6598375	1	0.11	42	4.2
AS0273	409463	6598332	0.001	0.17	34	3.08
AS0274	409489	6598289	3	0.06	39	4.5
AS0275	409515	6598247	3	0.09	54	2.89
AS0350	409465	6599095	0.001	0.17	5	0.44
AS0351	409491	6599053	0.001	0.22	5	0.56
AS0352	409517	6599010	0.001	0.15	5	0.56
AS0353	409543	6598967	0.001	0.16	8	0.81
AS0354	409569	6598925	0.001	0.21	12	0.9
AS0355	409595	6598882	0.001	0.08	9	0.68
AS0356	409621	6598839	0.001	0.13	15	0.89
AS0357	409648	6598797	0.001	0.09	9	0.67
AS0358	409674	6598754	0.001	0.17	4	0.53
AS0359	409700	6598712	0.001	0.36	4	0.63
AS0360	409726	6598669	0.001	0.26	7	0.9
AS0361	409752	6598626	1	0.26	10	1.26
AS0362	409778	6598584	2	0.19	39	1.78
AS0363	409804	6598541	1	0.18	47	1.88
AS0364	409830	6598498	2	0.11	27	1.3
AS0365	409857	6598456	2	0.13	17	1.86
AS0366	409883	6598413	0.001	0.09	13	1.61
AS0367	409909	6598370	3	0.47	21	2.27
AS0368	409935	6598328	2	0.24	40	2.23
AS0369	409961	6598285	2	0.18	31	1.64
AS0370	409987	6598243	0.001	0.13	14	1.25
AS0371	410013	6598200	0.001	0.16	24	1.68
AS0372	410039	6598157	0.001	0.38	3	0.89
AS0373	410066	6598115	1	0.37	7	0.81
AS0400	409583	6599285	0.001	0.12	4	0.67
AS0401	409609	6599242	0.001	0.1	4	0.45
AS0402	409635	6599200	0.001	0.15	5	0.54
AS0403	409661	6599157	0.001	0.11	4	0.34
AS0404	409687	6599114	0.001	0.27	5	0.57
AS0405	409714	6599072	0.001	0.34	10	1
AS0406	409740	6599029	1	0.25	9	0.72
AS0407	409766	6598987	0.001	0.24	9	0.61
AS0408	409792	6598944	1	0.16	12	1.16
AS0409	409818	6598901	0.001	0.12	11	1.25
AS0410	409844	6598859	0.001	0.14	5	0.55
AS0411	409870	6598816	0.001	0.11	5	0.84
AS0412	409896	6598773	0.001	0.09	3	0.8
AS0413	409923	6598731	0.001	0.08	6	1.04
AS0414	409949	6598688	0.001	0.001	3	0.53
AS0415	409975	6598645	1	0.4	3	0.51
AS0416	410001	6598603	0.001	0.07	6	0.84
AS0417	410027	6598560	0.001	0.09	3	0.49
AS0418	410053	6598518	0.001	0.09	7	1.42

AS0457	409780	6599347	0.001	0.13	4	0.54
AS0458	409806	6599304	0.001	0.22	5	0.64
AS0459	409832	6599262	0.001	0.13	5	0.71
AS0460	409858	6599219	0.001	0.14	5	0.56
AS0461	409884	6599176	0.001	0.18	10	0.82
AS0462	409910	6599134	1	0.17	14	0.76
AS0463	409936	6599091	0.001	0.08	11	0.78
AS0464	409962	6599048	1	0.23	13	1.95
AS0465	409989	6599006	0.001	0.17	12	2.56
AS0466	410015	6598963	0.001	0.17	6	0.73
AS0467	410041	6598921	0.001	0.06	2	0.41
AS0468	410067	6598878	0.001	0.05	3	0.51
AS0469	410093	6598835	0.001	0.08	3	0.48
AS0470	410119	6598793	0.001	0.06	4	0.69
AS0471	410145	6598750	0.001	0.07	3	0.66
AS0472	410171	6598707	0.001	0.07	2	0.61
AS0473	410198	6598665	0.001	0.14	3	0.82
AS0474	410224	6598622	0.001	0.12	6	1.36
AS0475	410250	6598579	1	0.08	5	1.25
AS0476	410276	6598537	0.001	0.06	4	1.15
AS0477	410302	6598494	2	0.11	9	1.36

For personal use only

## JORC Code, 2012 Edition – Table 1

### Section 1 Sampling Techniques and Data

(Criteria in this section apply to all succeeding sections.)

Criteria	JORC Code explanation	Commentary
Sampling techniques	<p>Nature and quality of sampling (e.g., cut channels, random chips, or specific specialised industry standard measurement tools appropriate to the minerals under investigation, such as down hole gamma sondes, or handheld XRF instruments, etc.). These examples should not be taken as limiting the broad meaning of sampling.</p> <p>Include reference to measures taken to ensure sample representivity and the appropriate calibration of any measurement tools or systems used.</p> <p>Aspects of the determination of mineralisation that are Material to the Public Report.</p> <p>In cases where 'industry standard' work has been done this would be relatively simple (e.g., 'reverse circulation drilling was used to obtain 1 m samples from which 3 kg was pulverised to produce a 30 g charge for fire assay'). In other cases, more explanation may be required, such as where there is coarse gold that has inherent sampling problems. Unusual commodities or mineralisation types (eg submarine nodules) may warrant disclosure of detailed information.</p>	<ul style="list-style-type: none"> <li>• 364 soil samples reported in this release were collected from a grid measuring a nominal 200m x 50m that covered the historical Amoco soil anomaly on EL4474 and EL9293.</li> <li>• As far as possible, samples were collected from the B horizon at least 15cm below the A horizon cover. Sampling depths varied from 15-60cm.</li> <li>• Samples were sieved on site to produce a -5mm fraction.</li> <li>• Samples were collected into labelled calico bags.</li> <li>• Samples were dispatched to Intertek laboratory (Adelaide).</li> </ul>
Drilling techniques	<p>Drill type (eg core, reverse circulation, open-hole hammer, rotary air blast, auger, Bangka, sonic, etc.) and details (eg core diameter, triple or standard tube, depth of diamond tails, face-sampling bit or other type, whether core is oriented and if so, by what method, etc.).</p>	<ul style="list-style-type: none"> <li>• No drilling undertaken or reported</li> </ul>
Drill sample recovery	<p>Method of recording and assessing core and chip sample recoveries and results is assessed.</p> <p>Measures taken to maximise sample recovery and ensure representative nature of the samples.</p> <p>Whether a relationship exists between sample recovery and grade and whether sample bias may have occurred due to preferential loss/gain of fine/coarse material.</p>	<ul style="list-style-type: none"> <li>• No drilling undertaken or reported</li> </ul>
Logging	<p>Whether core and chip samples have been geologically and geotechnically logged to a level of detail to support appropriate Mineral Resource estimation, mining studies and metallurgical studies.</p> <p>Whether logging is qualitative or quantitative in nature. Core (or costean, channel, etc.) photography.</p> <p>The total length and percentage of the relevant intersections logged.</p>	<ul style="list-style-type: none"> <li>• All soil samples collected were qualitatively logged and described by an experienced field technician with moisture content, soil type, colour and topography recorded for each sample site.</li> <li>• No drilling undertaken or reported</li> </ul>
Sub-sampling techniques and sample preparation	<p>If core, whether cut or sawn and whether quarter, half or all core taken.</p> <p>If non-core, whether riffled, tube sampled, rotary split, etc. and whether sampled wet or dry.</p> <p>For all sample types, the nature, quality and appropriateness of the sample preparation technique.</p> <p>Quality control procedures adopted for all sub-sampling stages to maximise</p>	<ul style="list-style-type: none"> <li>• No drilling undertaken or reported.</li> <li>• Samples collected were representative of the material identified during fieldwork.</li> <li>• Sampling procedures provide sufficiently representative sub-samples for the current interpretation.</li> <li>• Sample sizes are appropriate to the grain size of the material being sampled.</li> </ul>

Criteria	JORC Code explanation	Commentary
	<p>representivity of samples. Measures taken to ensure that the sampling is representative of the in situ material collected, including for instance results for field duplicate/second-half sampling. Whether sample sizes are appropriate to the grain size of the material being sampled.</p>	
Quality of assay data and laboratory tests	<p>The nature, quality and appropriateness of the assaying and laboratory procedures used and whether the technique is considered partial or total. For geophysical tools, spectrometers, handheld XRF instruments, etc., the parameters used in determining the analysis include instrument make and model, reading times, calibration factors applied and their derivation, etc. Nature of quality control procedures adopted (eg standards, blanks, duplicates, external laboratory checks) and whether acceptable levels of accuracy (i.e. lack of bias) and precision have been established.</p>	<ul style="list-style-type: none"> <li>All samples were dispatched to Intertek Laboratories Adelaide, South Australia.</li> <li>All samples - Preparation: SP01 – dry, pulverise up to 300g sub-sample</li> <li>All samples - Analytical Method: AR25/MS52 – aqua regia digest of 25g sub-sample, 52 elements analysed by ICP-MS.</li> </ul>
Verification of sampling and assaying	<p>The verification of significant intersections by either independent or alternative company personnel. The use of twinned holes. Documentation of primary data, data entry procedures, data verification, and data storage (physical and electronic) protocols. Discuss any adjustments to assay data.</p>	<ul style="list-style-type: none"> <li>No verification sampling and assaying have been captured to date for the soil samples reported herein.</li> <li>No drilling undertaken or reported</li> </ul>
Location of data points	<p>Accuracy and quality of surveys used to locate drill holes (collar and down-hole surveys), trenches, mine workings and other locations used in Mineral Resource estimation. Specification of the grid system used. Quality and adequacy of topographic control.</p>	<ul style="list-style-type: none"> <li>All samples have been located by a handheld Garmin GPS, using the GDA94 Zone 56J grid datum</li> </ul>
Data spacing and distribution	<p>Data spacing for reporting of Exploration Results. Whether the data spacing and distribution is sufficient to establish the degree of geological and grade continuity appropriate for the Mineral Resource and Ore Reserve estimation procedure(s) and classifications applied. Whether sample compositing has been applied.</p>	<ul style="list-style-type: none"> <li>Sampling grid was a nominal 200m x 50m.</li> <li>The work completed was appropriate for the current early exploration stage.</li> </ul>
Orientation of data in relation to geological structure	<p>Whether the orientation of sampling achieves unbiased sampling of possible structures and the extent to which this is known, considering the deposit type. If the relationship between the drilling orientation and the orientation of key mineralised structures is considered to have introduced a sampling bias, this should be assessed and reported if material.</p>	<ul style="list-style-type: none"> <li>No drilling undertaken or reported.</li> </ul>
Sample security	<p>The measures taken to ensure sample security.</p>	<ul style="list-style-type: none"> <li>Samples were in continual custody of professional Company representatives until final delivery by secure express parcel post to the laboratory, where all samples will be held in a secure setting until processing</li> </ul>
Audits or reviews	<p>The results of any audits or reviews of sampling techniques and data.</p>	<ul style="list-style-type: none"> <li>No audit has been undertaken at this early stage of exploration</li> </ul>

## Section 2 Reporting of Exploration Results

(Criteria listed in the preceding section also apply to this section.)

Criteria	JORC Code explanation	Commentary
Mineral tenement and land tenure status	Type, reference name/number, location and ownership, including agreements or material issues with third parties such as joint ventures, partnerships, overriding royalties, native title interests, historical sites, wilderness or national park and environmental settings. The security of the tenure held at the time of reporting, along with any known impediments to obtaining a licence to operate in the area.	<ul style="list-style-type: none"> <li>CRR holds six granted Exploration Licences (EL4474, EL9293, EL7679, EL9428, EL9429, EL9430), northeast of Armidale N.S.W., that encompass a total of ~986km<sup>2</sup>.</li> <li>All tenements are granted.</li> </ul>
Exploration done by other parties	Acknowledgment and appraisal of exploration by other parties.	<p><b>All historical exploration records are publicly available via the Geological Survey of New South Wales DIGS website.</b></p> <p><b>Key sources of exploration data generated by other parties include:</b></p> <p>Open File, DIGS Records, Geological Survey of New South Wales Report: GS1983/357(R00009703-9704) Two exploration reports, EL1427 &amp; 1742, Halls Peak area. Gardiner, G. for Amoco Minerals Australia Co.</p> <p>Gardiner, G., 1983. Final Report, Halls Peak, Exploration Licences 1427 and 1742, New South Wales, Amoco Minerals Australia Co., GS1983/360 R00014317.</p> <p>Sample AG(1)3000N 7393.5E, ALS Certificate of Analyses ST37207 – 2003; Coordinate 3000N 7393.5E based on Amoco's grid. Sample collected by M. Leu and reported in Leu, M. R., 2003. Annual Report for Exploration Licence Nos 4474 (N. N. Dennis) and 5339 (Wildesign Pty. Ltd.) for the period 13th January 2002 to 12th January 2003. Open File, DIGS Records, Geological Survey of New South Wales Report: Tenth annual exploration report, EL_4474_R00047867. Gold assayed by method Au-AA25; other multielement by method ME-ICP41.</p> <p>Sample S671. Collected by M. Leu in the creek around coordinate 3000N 7700- 7600E based on Amoco's grid. Results reported in ASX Certificate of Analyses BR12233601 – finalised 25 10 2012.</p> <p>Refer to Larvotto Resources (ASX:LRV) ASX Announcement 5 August 2024. Measured Resource 448kt @ 3.8% Sb; Indicated Resource 3,980kt @ 1.3% Sb and Inferred Resource 2,835kt @ 0.9% Sb.</p> <p>Open File, DIGS Records, Geological Survey of New South Wales Report: English, P.W., 1979. Halls Peak P.L.s 345 &amp; 353 N.S.W. Six Monthly Report to the Mines Department, July 1978 to January 1979, CRA Exploration Limited, GS1979/142.</p> <p>Leu, M. R., 1998. Annual Reports EL 4474, Halls Peak Area, Armidale Mining District for the period 13th January 1996 to 12th January 1998. Holder EL 4474 – N. N. Dennis. Open File, DIGS Records, Geological Survey of New South Wales Report: 1996-1998 Combined_fourth_and_fifth_annual_explora_R00020818.</p> <p>Open File, DIGS Records, Geological Survey of New South Wales Report: Kennewell, P. J., P.R. Degeling and Gentle, L.V., 2013. Annual Report for Exploration Licences 4474 and 5339, Halls Peak Project for Reporting Period 13 January 2012 to 12 January 2013. Open File, DIGS Records, Geological Survey of New South Wales Report: Twentieth_Annual_Exploration_Report_on_E_RE0004361</p> <p>Refer to Precious Metal Resources ASX Announcement Significant Gold Anomalies Suggest Potential for Hillgrove Style Gold/Antimony Deposits, 23rd October 2012</p>

Criteria	JORC Code explanation	Commentary
		<p>Sample AA, ASX Certificate of Analyses BR10096079 – finalised 10 08 2010. Sample collected by M. Leu, coordinates 6598185mN 56J, 40973 mE 56J, and reported in - Leu, M. R., 2011. Annual Report for Exploration Licences 4474 and 5339 for period 13th January 2010 to 12th January 2011. Holder PMR1 Pty. Ltd. Open File, DIGS records, Geological Survey of New South Wales Report: Eighteenth_Annual_Exploration_Report_on_RE0002327</p> <p>Sample 52863: Collected by Amoco Minerals Australia, Coordinate 3025N 7675E based on Amoco's grid. DIGS Records Geological Survey of New South Wales Report: GS1983/357. Leu, M. R., 2003. Annual Report for Exploration Licence Nos 4474 (N. N. Dennis) and 5339 (Wildesign Pty. Ltd.) for period 13th January 2002 to 12th January 2003. Open File, DIGS records, Geological Survey of New South Wales Report: Tenth_annual_exploration_report,_EL_4474_R00047867.</p> <p>Sample C1S10, ASX Certificate of Analyses BR0400463 – 2004; Coordinate 3000N 7700-7600E based on Amoco's grid. Sample collected by M. Leu and reported in - Leu, M. R., 2004. Annual Report for Exploration Licence Nos 4474 (N. N. Dennis) and 5339 (Wildesign Pty. Ltd.) for period 13th January 2003 to 12th January 2004. Open File, DIGS Records, Geological Survey of New South Wales Report: Eleventh Annual exploration report, EL_4474_and_5_R00051516. Gold assayed by method Au-AA25; antimony and other multielements by method ME-ICP41s.</p> <p>Sample HG8B. Contains sericitic alteration with goethite within veining. Sample is highly leached by still contained 0.11ppm Au, 308ppm Sb, 1,040 ppm Cu (ALS Certificate of Analyses BR15065053, 2015). Sample collected by M. Leu and reported in - Leu, M. R., Rebek, J., Kennewell, P., Degeling, P. R., Wang, Y. Robertson, R. A., 2016. Annual Report for Exploration Licences 4474 and 5339, Halls Peak Project, Reporting Period 13th January 2015 to 12th January 2016. DIGS Records Geological Survey of New South Wales Report: Twenty-third_Annual_Exploration_Report_on_RE0008131. Gold assayed by method Au-AA25; antimony and other multielements by method ME-MS61.</p> <p>Sample RC1, 1.03ppm Au, 15.8ppm Ag, 201ppm Sb, 1,435ppm As, 2,560ppm Pb, 462ppm Cu, and 198ppm Zn. Sample collected at GDA94 coordinates 56J 407280 mE 6598088 mN. Results reported in ALS Certificate of Analyses BR22220725, 3 9 2022. Gold assayed by method Au-AA25; antimony and other multielements by method ME-MS61.</p> <p>Groves, D. I., Goldfarb, R. J., Gebre-Mariam, M., Hagemann, S. G., Robert, F., 1998. Orogenic gold deposits: A proposed classification in the context of their crustal distribution and relationship to other gold deposit types. Ore Geology Reviews, 13, 7 – 27.</p> <p><b>Petrographic Reports</b></p> <p>Ashley, P.M. 2024. Petrographic Report on Nine Rock Samples from the Barraba Area, Northern NSW, and North and Central Queensland, August 2024</p> <p>England, R.N., 2003, Petrographic Notes for 9 Samples from the Hall's Peak Area, Southern New England Fold</p> <p>Belt</p> <p>England, R.N., 2004, Petrographic Notes for 17 Samples from the Hall's Peak Area.</p> <p><b>DIGS Records, Geological Survey of New South Wales Open File Reports specifically detailing knowledge on the Amoco Grid</b></p>

For personal use only

Criteria	JORC Code explanation	Commentary
		<p><b>Hillgrove-style Orogenic Gold-Antimony System and the CRA-BHP drilling:</b></p> <p>Leu, M. R., 1998. Annual Reports EL 4474, Halls Peak Area, Armidale Mining District for period 13th January 1996 to 12th January 1998. Holder EL 4474 – N. N. Dennis. Open File, DIGS Records, Geological Survey of New South Wales Report: 1996-1998 Combined_fourth_and_fifth_annual_explora_R00020818.</p> <p>Leu, M. R. &amp; Rogers A., 2000, Annual Report for Exploration Licence Nos 4474 (N. N. Dennis) and 5339 (Wildesign Pty. Ltd.) for period 13th January 1999 to 12th January 2000. Open File, DIGS Records, Geological Survey of New South Wales Report:</p> <p>Leu, M. R., 2001. Annual Report for Exploration Licence Nos 4474 (N. N. Dennis) and 5339 (Wildesign Pty. Ltd.) for period 13th January 2000 to 12th January 2001. Open File, DIGS Records, Geological Survey of New South Wales Report: Eighth_ annual_ exploration_ report, _EL_447_R00019769</p> <p>Leu, M. R., 2002. Annual Report for Exploration Licence Nos 4474 (N. N. Dennis) and 5339 (Wildesign Pty. Ltd.) for period 13th January 2001 to 12th January 2002. Open File, DIGS Records, Geological Survey of New South Wales Report: Ninth annual_ exploration report, EL_4474_R00032998</p> <p>Leu, M. R., 2003. Annual Report for Exploration Licence Nos 4474 (N. N. Dennis) and 5339 (Wildesign Pty. Ltd.) for period 13th January 2002 to 12th January 2003. Open File, DIGS Records, Geological Survey of New South Wales Report: Tenth annual exploration report, _EL_4474_R00047867</p> <p>Leu, M. R., 2004. Annual Report for Exploration Licence Nos 4474 (N. N. Dennis) and 5339 (Wildesign Pty. Ltd.) for period 13th January 2003 to 12th January 2004. Open File, DIGS Records, Geological Survey of New South Wales Report: Eleventh Annual exploration report, EL_4474_and_5_R00051516_Petr</p> <p>Leu, M. R., 2011. Annual Report for Exploration Licences 4474 and 5339 for period 13th January 2010 to 12th January 2011. Holder PMR1 Pty. Ltd. Open File, DIGS records, Geological Survey of New South Wales Report: Eighteenth_Annual_Exploration_Report_on_RE0002327</p> <p>Leu, M. R., Rebek, J., Kennewell, P., Degeling, P. R., Wang, Y. Robertson, R. A., 2016. Annual Report for Exploration Licences 4474 and 5339, Halls Peak Project, Reporting Period 13th January 2015 to 12th January 2016. DIGS Records Geological Survey of New South Wales Report: Twenty-third_Annual_Exploration_Report_on_RE0008131</p> <p>*27. LeLeu, M. R., 2023. Exploration Licence 9293, Annual Report for period ending 16th September 2023. Holder Golden Plateau Pty. Ltd. Open File, DIGS records, Geological Survey of New South Wales, Restricted.</p> <p>Leu, M. R., 2024. Exploration Licence 9293, Annual Report for period ending 16th September 2023. Holder Golden Plateau Pty. Ltd. Open File, DIGS records, Geological Survey of New South Wales, Restricted.</p> <p><b>Other Key Reports</b></p> <p>Re. Red River Resources Limited ASX Release September 2019 Hillgrove Gold-Antimony Project Site Visit</p> <p>Open File, DIGS Records, Geological Survey of New South Wales Report: Gilligan, L.B., Brownlow, J.W., Cameron R. G., Henley, H. F. &amp; Degeling, P. R., 1992. Dorrigo-Coffs Harbour 1:250,000 metallogenic</p>

For personal use only

Criteria	JORC Code explanation	Commentary
		<p>map SH/56-10, SH/56-11: metallogenic study and mineral deposit data sheets, 509pp., Geological Survey of N.S.W., Sydney Hooper B., Ashley, P. M. and Shields P. 2006. The Hillgrove Gold-Antimony-Tungsten District, NSW, SMEDG</p> <p>Ashley, P.M. 2014. Petrographic Report on Five Drill Core and Five Rock Samples from the Uralla and Armidale Regions and One Drill Core Sample from Halls Peak, Northern New South Wales.</p> <p>Ashley, P.M. 2022. Petrographic Report on Eleven Drill Core Samples from the Halls Peak Project Area, Northeastern N.S.W, May 2022</p> <p>Ashley, P.M. 2022. Petrographic Report on Twenty Drill Core Samples from the Halls Peak Project Area, Northeastern N.S.W, July 2022</p> <p>Ashley, P.M. 2023. Petrographic Report on Twenty-eight Drill Core Samples from the Halls Peak Project Area, Northeastern N.S.W, January 2023</p> <p>Open File, DIGS Records, Geological Survey of New South Wales Report: Gilligan, L.B., Brownlow, J.W., Cameron R. G., Henley, H. F. &amp; Degeling, P. R., 1992. Dorrigo-Coffs Harbour 1:250,000 metallogenic map SH/56-10, SH/56-11: metallogenic study and mineral deposit data sheets, 509pp., Geological Survey of N.S.W., Sydney.</p>
Geology	<i>Deposit type, geological setting and style of mineralisation.</i>	<ul style="list-style-type: none"> <li>Potential Hillgrove-style Orogenic Antimony-Gold System</li> </ul>
Drill hole Information	<p><i>A summary of all information material to the understanding of the exploration results, including a tabulation of the following information for all Material drill holes:</i></p> <p><i>easting and northing of the drill hole collar elevation or RL (Reduced Level – elevation above sea level in metres) of the drill hole collar</i></p> <p><i>dip and azimuth of the hole</i></p> <p><i>downhole length and interception depth</i></p> <p><i>hole length.</i></p> <p><i>If the exclusion of this information is justified on the basis that the information is not Material and this exclusion does not detract from the understanding of the report, the Competent Person should clearly explain why this is the case.</i></p>	<ul style="list-style-type: none"> <li>Not applicable, no drilling undertaken or reported.</li> <li>Not applicable, no drilling undertaken or reported</li> </ul>
Data aggregation methods	<p><i>In reporting Exploration Results, weighting averaging techniques, maximum and/or minimum grade truncations (eg cutting of high grades) and cut-off grades are usually Material and should be stated. Where aggregate intercepts incorporate short lengths of high grade results and longer lengths of low grade results, the procedure used for such aggregation should be stated and some typical examples of such aggregations should be shown in detail.</i></p> <p><i>The assumptions used for any reporting of metal equivalent values should be clearly stated.</i></p>	<ul style="list-style-type: none"> <li>No weighting of averaging techniques has been utilized.</li> <li>No aggregations are reported.</li> <li>No metal equivalents were used or calculated.</li> </ul>
Relationship between mineralisation widths and intercept lengths	<p><i>These relationships are particularly important in the reporting of Exploration Results.</i></p> <p><i>If the geometry of the mineralisation with respect to the drill hole angle is known, its nature should be reported.</i></p> <p><i>If it is not known and only the down hole lengths are reported, there should be a clear statement to this effect (eg 'down</i></p>	<ul style="list-style-type: none"> <li>Not applicable, no drilling undertaken or reported</li> <li>Not applicable. no drilling undertaken or reported</li> <li>Not applicable, no drilling undertaken or reported</li> </ul>

Criteria	JORC Code explanation	Commentary
	<i>hole length, true width not known').</i>	
Diagrams	<i>Appropriate maps and sections (with scales) and tabulations of intercepts should be included for any significant discovery being reported. These should include, but not be limited to a plan view of drill hole collar locations and appropriate sectional views.</i>	<ul style="list-style-type: none"> <li>• Pertinent maps for this stage of Project are included in the release.</li> <li>• Coordinates in MGA94</li> </ul>
Balanced reporting	<i>Where comprehensive reporting of all Exploration Results is not practicable, representative reporting of both low and high grades and/or widths should be practiced to avoid misleading reporting of Exploration Results.</i>	<ul style="list-style-type: none"> <li>• Table 1 above contains all assay results of Au, Sb, Ag and Pb for all samples collected. All results described in this announcement have been reported.</li> </ul>
Other substantive exploration data	<i>Other exploration data, if meaningful and material, should be reported including (but not limited to): geological observations; geophysical survey results; geochemical survey results; bulk samples – size and method of treatment; metallurgical test results; bulk density, groundwater, geotechnical and rock characteristics; potential deleterious or contaminating substances.</i>	<ul style="list-style-type: none"> <li>• All historical exploration data is being reviewed and compiled into a central data base.</li> <li>• Desktop reviews of gold and antimony mineralisation and structural controls is being undertaken to define diagnostic features to inform field programs.</li> </ul>
Further work	<i>The nature and scale of planned further work (eg tests for lateral extensions or depth extensions or large-scale step-out drilling). Diagrams clearly highlighting the areas of possible extensions, including the main geological interpretations and future drilling areas, provided this information is not commercially sensitive.</i>	<ul style="list-style-type: none"> <li>• All historical exploration data is being reviewed and compiled into a central data base.</li> <li>• Field crews will be mobilised to site to continue rock chip and soil geochemical sampling.</li> <li>• A closed-spaced airborne magnetic and lidar survey is being planned.</li> </ul>