

## STRONG GOLD INTERCEPTS AND NEW CONDUCTOR PLATES EXTEND SOUTHERN PARIS MINERALISATION AT LEAST 280M

**NEW DOWN-HOLE ELECTROMAGNETIC (DHEM) CONDUCTOR PLATES C17, C18 AND C19 LINK HIGH-GRADE ZONES; EFFICIENT DRILLING CONTINUES TO DELIVER GROWTH POTENTIAL**

### HIGHLIGHTS

- **Step-out RC drilling southwest of the Paris deposit delivers another strong gold intersection returning:**
  - **6m @ 7.1 g/t gold** from 265m (vertical depth ~233m) in hole 25PRC174,
- The intercept **extends** mineralisation ~40m west of hole 25PRC163, which returned **6m @ 11.7 g/t gold** within **15m @ 5 g/t gold**, confirming continuity across this emerging southern corridor.
- DHEM in 25PRC174 defined **new conductor** plate **C17, (40m x 130m)**, conductor extends mineralisation westwards towards high-grade zone intersected ~85m in hole 25PRC197.
- DHEM in hole 25PRC197 identified **new conductor, C18 (50m x 80m)**, confirming structural connectivity with 25PRC174 and extending mineralisation westwards. 25PRC197 returned:
  - ✓ **25m @ 3.9 g/t gold** from ~290m, including **10m @ 5.2 g/t gold** and **4m @ 6.4 g/t gold**
- New DHEM plate **C19, (60m x 180m)**, identified west of 25PRC197, this conductor together with plates **C16, C17** and **C18** confirms at least **280m** of continuous high-grade strike in the Paris Southern lode, remaining open to the west and not included in existent MRE.
- Torque secured a second RC rig arriving early October ensuring continuous and highly efficient drilling guided by Torque’s structural and geological model with the support of DHEM through 2026.

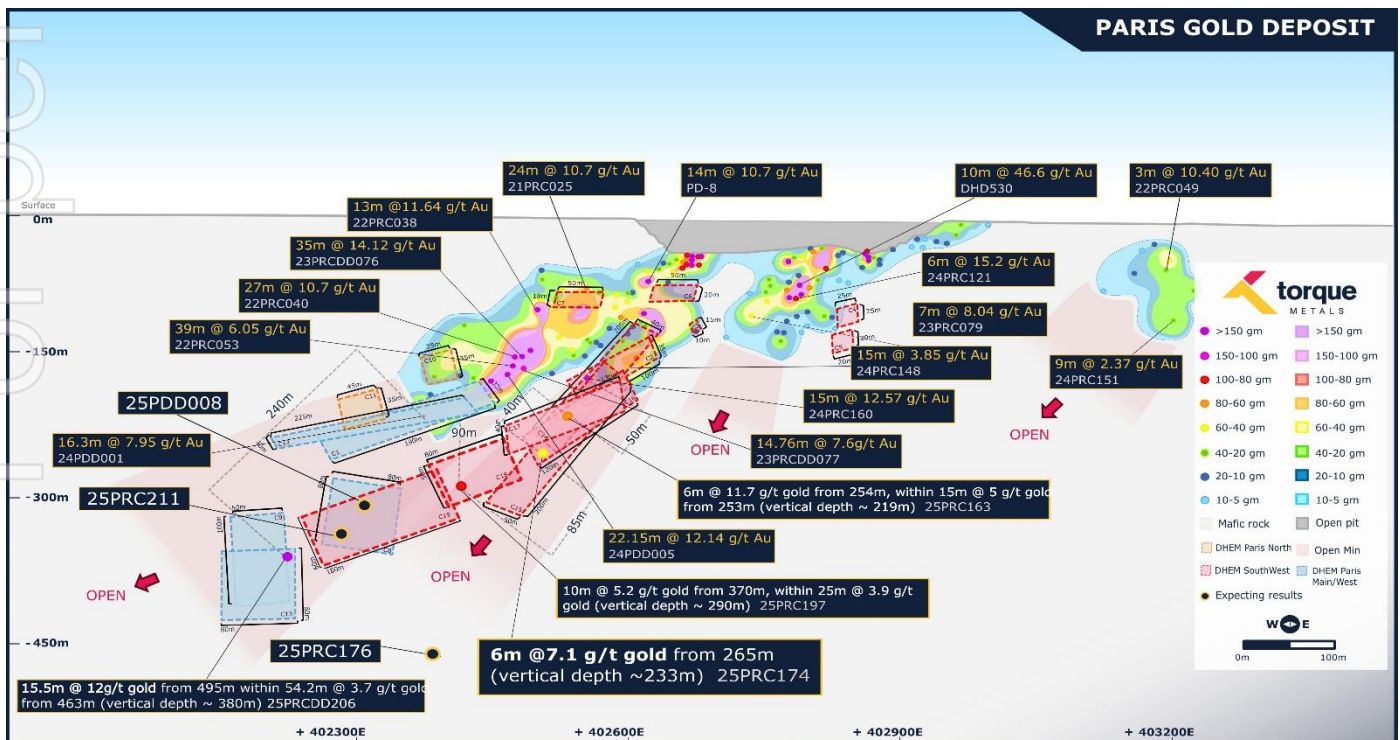


Figure 1 EM conductor plates modelled from DHEM surveys targeting extensions of pyrrhotite-associated gold mineralisation.

For personal use only

## TORQUE'S MANAGING DIRECTOR, CRISTIAN MORENO COMMENTED:

"Our integrated structural and geophysical approach continues to deliver strong results. The intercept in hole 25PRC174 of **6m @ 11 g/t gold** within **13m @ 3.4 g/t gold** not only extends mineralisation ~40m west of hole 25PRC163 but also coincides with the definition of plate **C17**, which vectors directly toward the gold zone intersected in hole 25PRC197. That hole returned **25m @ 3.9 g/t gold**, including **10m @ 5.2 g/t gold** and **4m @ 6.4 g/t gold**, in a ~250m gap outside the current MRE.

The subsequent identification of plates **C18** and **C19** in 25PRC197 is highly significant. Together with plates **C16** and **C17**, they confirm a continuous high-grade strike of ~280m in the Paris Southern lode, remaining open to the west. This not only validates the correlation between pyrrhotite-associated mineralisation and DHEM conductors but also demonstrates **structural connectivity** between zones, materially expanding the scale of mineralised structures in this part of the system.

**With an additional RC rig arriving in October**, Torque is well positioned to accelerate systematic testing of this growing conductor network. These outcomes reinforce our strategy of integrating geology, structural analysis, geophysics and drilling to continue expanding the Paris deposit well beyond the current MRE."

## DRILLING UPDATE

Torque Metals (ASX: **TOR**) is pleased to report that **step-out** drilling at the Paris Gold Project continues to expand mineralisation, highlighted by a notable gold intersection in hole 25PRC174 located south of the defined mineral resource estimate MRE including:

- ✓ **6m @ 7.1 g/t gold** from 265m within a broader interval of **13m @ 3.4 g/t gold** (vertical depth ~233m),

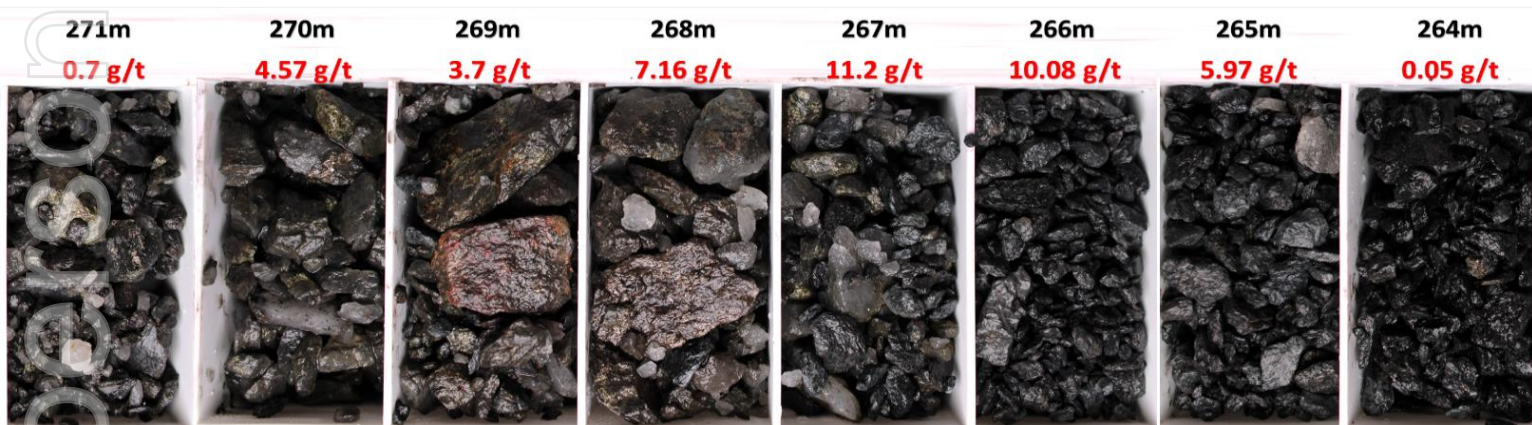


Figure 2 RC drill chips, hole 25PRC174, abundant pyrrhotite, chlorite alteration and quartz carbonate veins including 6m @ 7.1 g/t gold from 265m.

The intersection is filling-up a 130-metre gap between mineralised intervals 25PRC163, **6m @ 11.7 g/t gold** within **15m @ 5 g/t gold**<sup>1</sup> and 25PRC197, **25m @ 3.9 g/t gold** including **10m @ 5.2 g/t gold** and **4m @ 6.4 g/t gold**<sup>2</sup>, hole 25PRC174 and previous mineralised intervals are not included in existent MRE.

DHEM surveying in hole 25PRC174 defined a new conductor plate, **C17 (40m x 130m)**, indicating mineralisation is extending westwards to hole 25PRC197, ~80m west, which intersected:

- ✓ **10m @ 5.2 g/t gold** from 370m **4m @ 6.4 g/t gold** from 355m, within a broader interval of
  - **25m @ 3.9 g/t gold** (vertical depth ~290m)

<sup>1</sup> Refer to ASX Announcement dated 18 August 2025 "High-grade gold intercept in second parallel lode at Paris"

<sup>2</sup> Refer to ASX Announcement dated 8 September 2025 "High-grade gold extensions at Paris Gold Project"

DHEM surveying of hole 25PRC197 has defined a new conductor plate, **C18 (50m x 80m)**, along with an additional plate to the west, **C19 (180m x 60m)**. Together, these plates outline a continuous mineralised structure interpreted as the Paris Southwest lode, extending at least 280m, remaining open to the west and lying entirely outside the current Paris MRE.

## DRILLING AND GEOPHYSICAL CONTEXT

Torque's systematic program, including geological, structural and geophysical modelling, continues to validate its vectoring targeting strategy. Earlier drilling in hole 25PRC163 intersected **6m @ 11.7 g/t gold** within **15m @ 5 g/t gold** in Paris southern lode, with subsequent DHEM defining conductor plate **C15 (200m x 50m)**.

To test this plate, hole 25PRC170 was drilled ~80m to the southwest. While ground conditions caused deviation, the hole intersected the edge of the modelled plate. Rock chips at the target depth displayed strong carbonate alteration, interpreted as a mineralisation halo but lacking the typical alteration associated with the high-grade gold zones in the Paris deposit. DHEM surveying of 25PRC170 subsequently defined a new conductor, **C16 (30m x 120m)**, with stronger conductivity ~20m northwest of the alteration zone intersected in 25PRC170.

Follow-up drilling with hole 25PRC174 targeted plate **C16**. Despite some trajectory deviation, the hole intersected a strong zone of mineralisation returning **6m @ 7.1 g/t gold** within a broader interval of **13m @ 3.4 g/t gold** vertical depth ~233m. DHEM surveying of this hole then identified a further plate, **C17 (40m x 130m)**, extending mineralisation southwest towards hole 25PRC197.

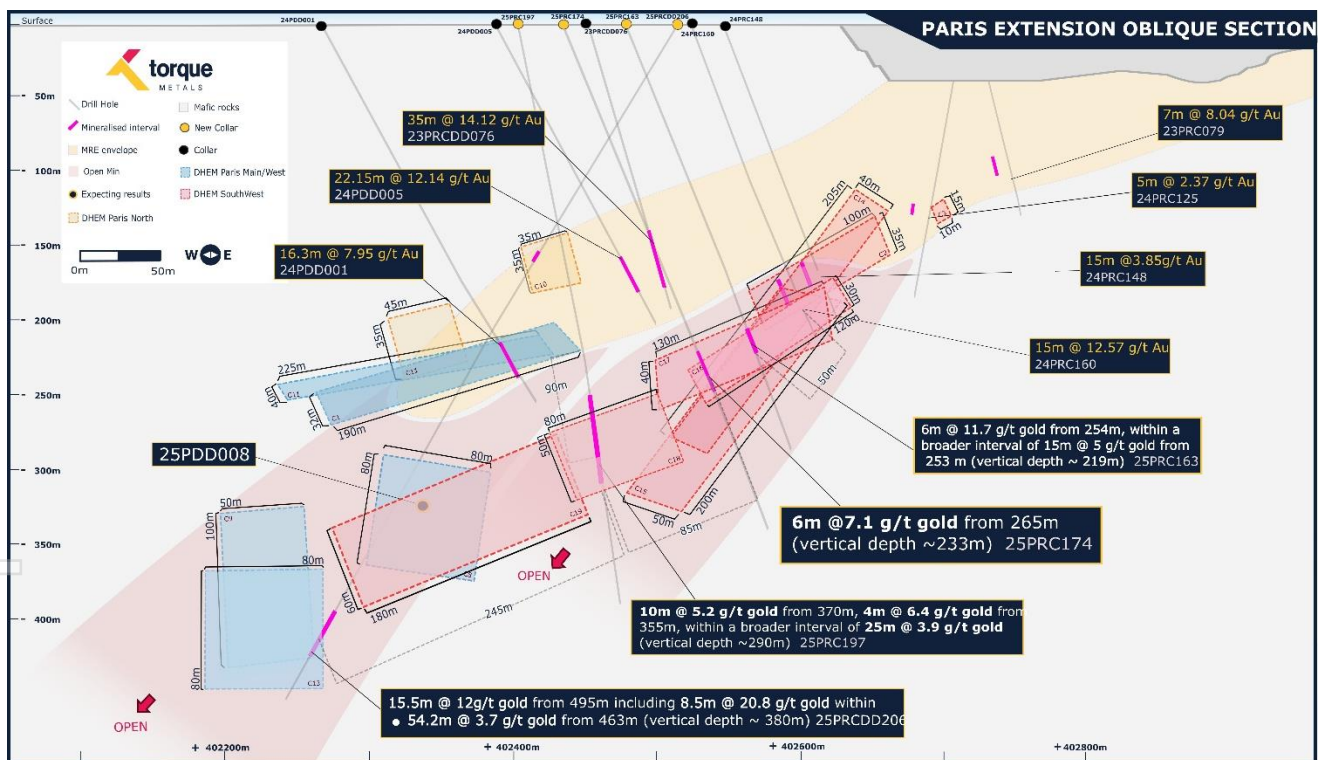


Figure 3 Paris deposit oblique view, DHEM indicating extensions in multiple directions

## 25PRC197 DHEM PLATES

Hole 25PRC197 was originally drilled to test a shallow northern DHEM plate **C10** and to serve as a platform for deeper DHEM surveys. 25PRC197 intersected a significant gold zone of **25m @ 3.9 g/t gold** from ~290m, including **10m @ 5.2 g/t gold** and **4m @ 6.4 g/t gold**, within a 250m gap outside the current MRE and beyond any previously modelled conductors. DHEM performed on this hole **has now defined** a new plate: **C18 (50m x 80m)** indicating a continuous mineralised zone of 130 metres of strike.



For personal use only

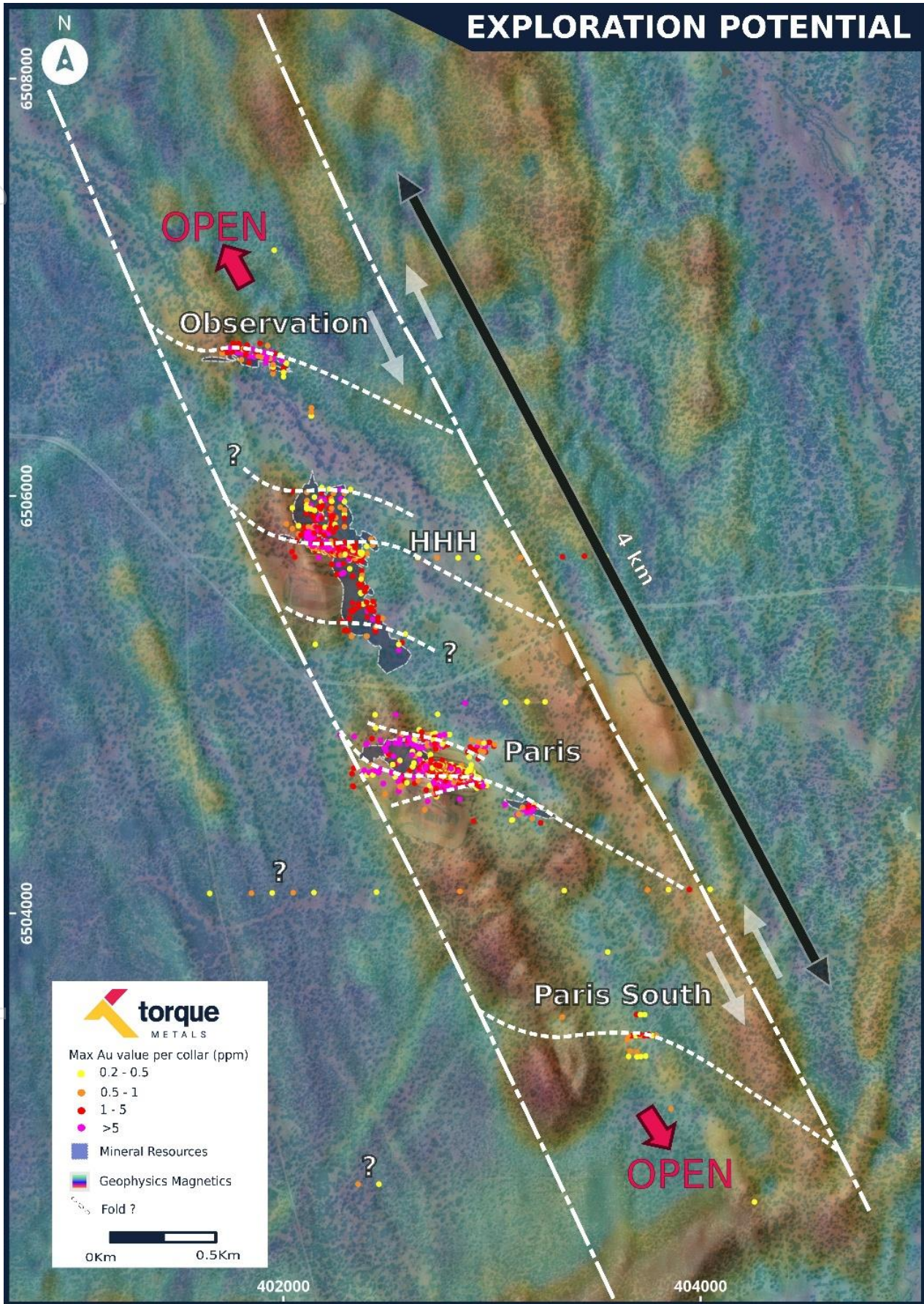


Figure 5 Paris Structural framework, mineral resources and drilling.

## ABOUT TORQUE METALS

Torque's entire Paris Exploration Camp covers ~1,200km<sup>2</sup> of land, including 16 mining licences, 2 prospecting licences and 48 exploration licences ~90km Southeast of Kalgoorlie in WA. Torque is focused on mineral exploration in this well-established mineral province.

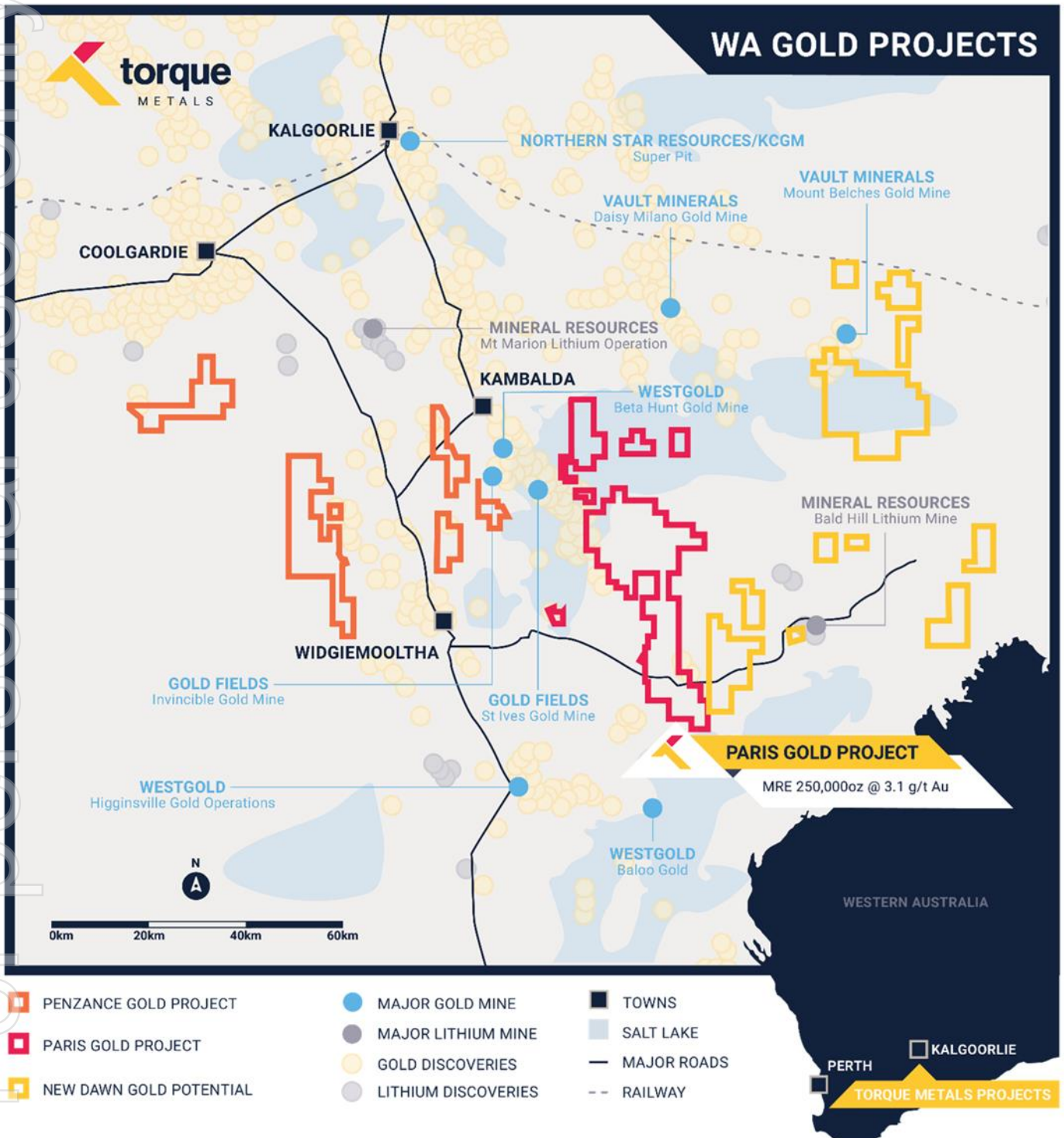


Figure 6 Paris Exploration Camp; Paris Gold, New Dawn Lithium and Penzance Gold/Lithium projects

Torque has embedded its presence and staked its future on the mineral endowed region south of Kambalda, WA. Through exemplary technical application and rewarding field work Torque recorded its inaugural gold resource within the Paris Gold Project, an inventory within **2.5km** strike of a **57km** long prospective corridor.

## PARIS GOLD PROJECT AND MINERAL RESOURCE ESTIMATE

The Paris Gold Project MRE<sup>3</sup> includes three deposits (Paris, HHH and Observation), which are only partially tested. The project, fully controlled by Torque, covers **~57km** strike length within **~350km<sup>2</sup>** greenstone belt. Paris MRE spans **2.5km** strike length and an area of **2.5km<sup>2</sup>**, with strong indications of interlinking structures between Paris, HHH, Observation deposits and promising gold mineralisation now identified just outside the resource area.

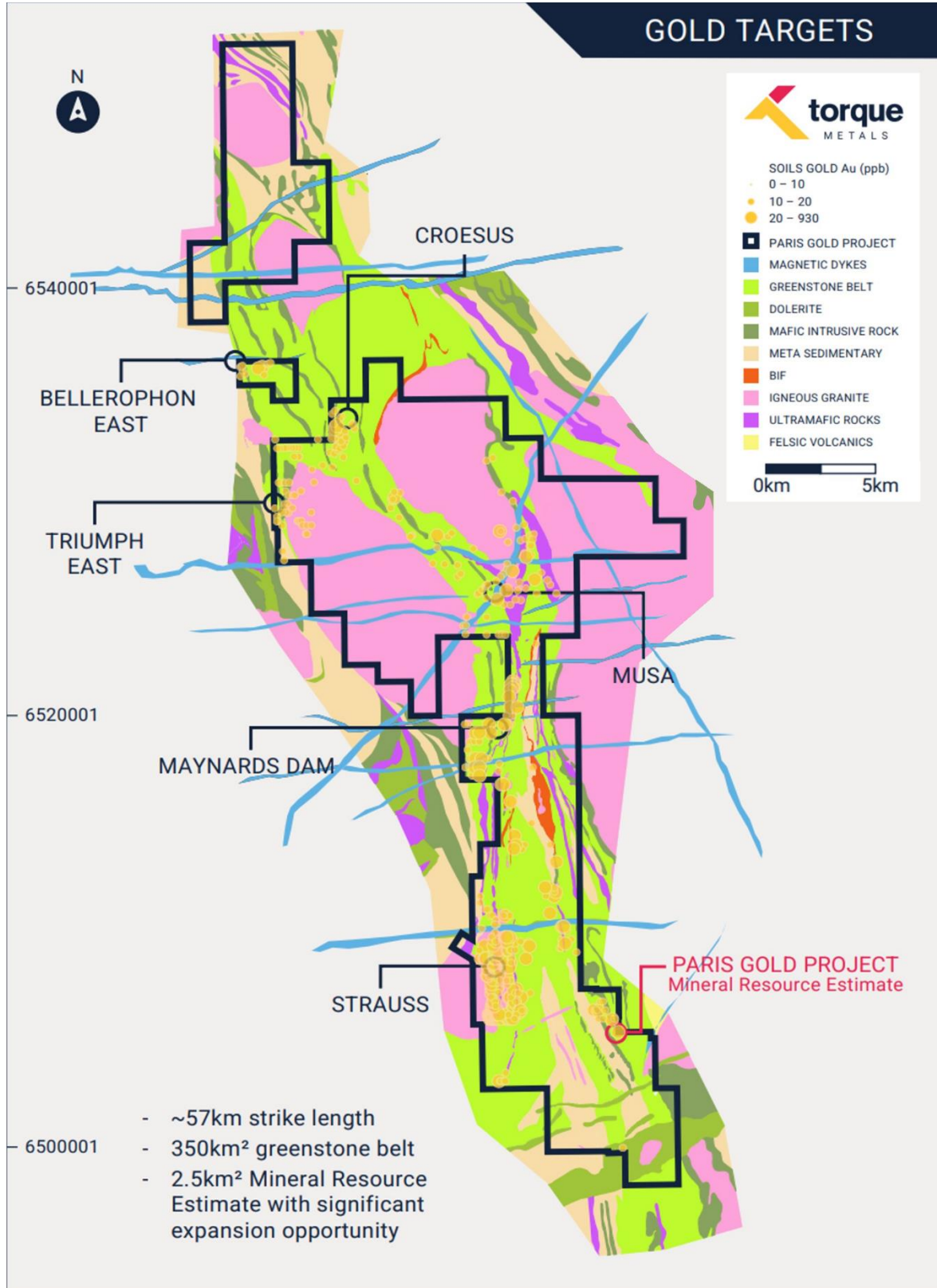


Figure 7 Paris Gold Project, regional scale and greenstone belt dominance.

The Paris Gold Project MRE<sup>3</sup>, based on RC and Diamond drilling completed and assayed up to 1 September 2024, was prepared by independent consultants (Mining Plus Pty Ltd) in accordance with the JORC code (2012 Edition), incorporating the Paris, HHH, Observation deposits (see tables 1 and 2 below).

*Table 1 Paris Gold Project, Global Mineral Resource Estimate*

Potential Mining Scenario	Indicated			Inferred			Total		
	Tonnes	Grade	Ounces	Tonnes	Grade	Ounces	Tonnes	Grade	Ounces
	(Kt)	(g/t)	('000 Oz)	(Kt)	(g/t)	('000 Oz)	(Kt)	(g/t)	('000 Oz)
Open Pit	601	3.2	62	1,428	2.8	128	2,029	2.9	190
Underground	5	5.4	1	484	3.8	59	489	3.8	60
<b>Total</b>	<b>606</b>	<b>3.2</b>	<b>63</b>	<b>1,912</b>	<b>3.0</b>	<b>187</b>	<b>2,518</b>	<b>3.1</b>	<b>250</b>

*Table 2 Paris, HHH and Observation Mineral Resource Estimate*

Deposit	Indicated			Inferred			Total		
	Tonnes	Grade	Ounces	Tonnes	Grade	Ounces	Tonnes	Grade	Ounces
	(Kt)	(g/t)	('000 Oz)	(Kt)	(g/t)	('000 Oz)	(Kt)	(g/t)	('000 Oz)
Paris	284	3.7	34	810	4.5	118	1,094	4.3	152
HHH	97	3.3	10	1,048	1.9	63	1,145	2.0	73
Observation	225	2.7	19	54	3.5	6	279	2.8	25
<b>Total</b>	<b>606</b>	<b>3.2</b>	<b>63</b>	<b>1,912</b>	<b>3.0</b>	<b>187</b>	<b>2,518</b>	<b>3.1</b>	<b>250</b>

## COMPLIANCE STATEMENT

Information in this announcement that relates to Exploration Results is based on information compiled by Mr Cristian Moreno, who is a Member of the Australasian Institute of Mining and Metallurgy, Australian Institute of Management and Member of the Australian Institute of Company Directors. Mr Moreno is an employee of Torque Metals Limited. Mr Moreno has sufficient experience which is relevant to the style of mineralisation and type of deposit under consideration and to the activity which he is undertaking to qualify as a Competent Person as defined in the 2012 Edition of the Australasian Code for Reporting of Exploration Results, Mineral Resources and Ore Reserves ('the JORC code'). Mr Moreno consents to the inclusion in this announcement of the matters based on his information in the form and context in which it appears.

Information in this announcement that relates to the Mineral Resource Estimate and classification of the Paris Gold Project is based on information compiled by Kate Kitchen, who is a Member of the Australasian Institute of Mining and Metallurgy and a Member of the Australian Institute of Geoscientists. Kate Kitchen is an independent consultant employed full time by Mining Plus Pty Ltd. Kate Kitchen has sufficient experience that is relevant to the style of mineralisation and type of deposit under consideration and to the activity which she is undertaking to qualify as a Competent Person as defined in the 2012 Edition of the Australasian Code for Reporting of Exploration Results, Mineral Resources and Ore Reserves ('the JORC code'). Kate Kitchen consents to the inclusion in the report of the matters based on the information in the form and context in which it appears.

## PREVIOUSLY REPORTED RESULTS

There is information in this announcement relating to exploration results which were previously announced on the ASX before 22 September 2025. Other than as disclosed in this announcement, the Company states that it is not aware of any new information or data that materially affects the information included in the original market announcements. All material assumptions and technical parameters underpinning the MRE continue to apply and have not materially changed since previously released on 18 September 2024.

## FORWARD LOOKING STATEMENTS

This announcement contains certain forward-looking statements which may be identified by words such as "believes", "estimates", "expects", "intends", "may", "will", "would", "could", or "should" and other similar words that involve risks and uncertainties. These statements are based on an assessment of present economic and operating conditions, and on several assumptions regarding future events and actions that, as at the date of this announcement, are expected to take place. Where the Company expresses or implies an expectation or belief as to future events or results, such an expectation or belief is expressed in good faith and believed to have a reasonable basis.

Such forward-looking statements are not guarantees of future performance and involve known and unknown risks, uncertainties, assumptions and other important factors, many of which are beyond the control of the Company, the Directors and management of the Company. These and other factors could cause actual results to differ materially from those expressed in any forward-looking statements.

The Company cannot and does not give assurances that the results, performance or achievements expressed or implied in the forward-looking statements contained in this announcement will occur and investors are cautioned not to place undue reliance on these forward-looking statements.

This announcement has been authorised by the Board of Directors of Torque.

For more information contact:

**Cristian Moreno**

Managing Director

Torque Metals Limited

[Cristian@torquemetals.com](mailto:Cristian@torquemetals.com)



## APPENDIX 1: LABORATORY ASSAY RESULTS: PHOTON ASSAY

Only gold assays  $\geq 0.3$  ppm (0.3 g/t) are recorded in the following table, except where relevant as part of a longer intercept. All intercepts are presented as down-hole lengths.

Hole ID	From (m)	To (m)	Width (m)	Au (ppm)
2025PRC174	263	264	1	0.04
2025PRC174	264	265	1	0.05
2025PRC174	265	266	1	5.97
2025PRC174	266	267	1	10.08
2025PRC174	267	268	1	11.2
2025PRC174	268	269	1	7.16
2025PRC174	269	270	1	3.7
2025PRC174	270	271	1	4.57
2025PRC174	271	272	1	0.7
2025PRC174	272	273	1	0.25
2025PRC174	273	274	1	0.08
2025PRC174	274	275	1	0.05
2025PRC174	275	276	1	0.33
2025PRC170	289	290	1	0.39
2025PRC170	290	291	1	1
2025PRC170	291	292	1	0.03
2025PRC170	292	293	1	0.53
2025PRC170	293	294	1	0.14
2025PRC170	294	295	1	0.27
2025PRC170	295	296	1	0.03
2025PRC170	296	297	1	0.03
2025PRC170	297	298	1	0.03
2025PRC170	298	299	1	0.78
2025PRC170	299	300	1	0.13
2025PRC170	300	301	1	0.04

**APPENDIX 2: COLLAR AND DOWN HOLE SURVEY OF DIAMOND AND RC DRILLHOLES RELEASED IN THIS ANNOUNCEMENT.**

Downhole surveys were completed on all the DD and RC drill holes by the drillers. They used a True North seeking Gyro downhole tool to collect the surveys approximately every 5m down the hole. The azimuth shown is the magnetic true north azimuth of the drilling direction. All locations on Australian Geodetic Grid MGA\_GDA94-51.

Hole ID	Coordinates			Depth (m)	Survey method	Azimuth	Dip	Type	Status	Assay status	DHEM Plate
	Easting	Northing	RL (m)								
2025PRC186	402856.442	6504535.662	296.670	276	RTK GPS	10	-60	RC	Drilled	Pending	C4, C5
2025PRC187	403074.416	6504462.812	292.857	312	RTK GPS	40	-60	RC	Drilled	Pending	Blocked
2025PRC184	402716.5404	6504567.034	300.3107	318	RTK GPS	90	-70	RC	Drilled	Pending	Pending
2025PRCDD210W1	402451.08	6504920.379	300.543	334-633.2	RTK GPS	225	-62	DD	Drilled	Pending	Pending
2025PRC168	402579.307	6504584.059	299.4486	348	RTK GPS	67	-50	RC	Drilled	Pending	Pending
2025PRC170	402438.8635	6504583.663	298.4904	432	RTK GPS	50	-60	RC	Drilled	Received	C16
2025PRC174	402452.8327	6504628.6	299.6477	380	RTK GPS	53	-62	RC	Drilled	Received	C17
2025PDD008	402459.719	6504561.779	299.436	-	RTK GPS	330	-59	DD	Ongoing	Pending	Pending
2025PSRC029	403424.611	6503439.071	292.056	432	RTK GPS	35	-55	RC	Drilled	Pending	Pending
2025PRC197	402409.9038	6504920.498	300.6198	504	RTK GPS	165	-55	RC	Drilled	Received	C18, C19



## APPENDIX 3: JORC CODE, 2012 EDITION – TABLE 1 EXPLORATION RESULTS

### Section 1 Sampling Techniques and Data

Criteria	JORC Code explanation	Commentary
Sampling techniques	<ul style="list-style-type: none"> <li>Nature and quality of sampling (e.g., cut channels, random chips, or specific specialised industry standard measurement tools appropriate to the minerals under investigation, such as down hole gamma sondes, or handheld XRF instruments, etc). These examples should not be taken as limiting the broad meaning of sampling.</li> <li>Include reference to measures taken to ensure sample representivity and the appropriate calibration of any measurement tools or systems used.</li> <li>Aspects of the determination of mineralisation that are Material to the Public Report.</li> <li>In cases where 'industry standard' work has been done this would be relatively simple (e.g., 'reverse circulation drilling was used to obtain 1 m samples from which 3 kg was pulverised to produce a 30 g charge for fire assay'). In other cases, more explanation may be required, such as where there is coarse gold that has inherent sampling problems. Unusual commodities or mineralisation types (e.g., submarine nodules) may warrant disclosure of detailed information.</li> </ul>	<ul style="list-style-type: none"> <li>Industry-standard drilling methods, such as diamond drilling (DD) and reverse circulation drilling (RC) were used to sample the project. Chips and (or) Diamond core are produced and sampled for assays.</li> <li>The RC drilling was to generally accepted industry standards producing 1.0m samples which were collected beneath the cyclone and then passed through a cone splitter.</li> <li>The splitter reject sample was collected into green plastic bags or plastic buckets and laid out on the ground in 20-50m rows.</li> <li>RC Chips were sampled at 1m intervals to produce an approximate representative 3kg sample into pre-numbered calico sample bags.</li> <li>The full length of each hole drilled was sampled when drilling RC, and mineralised intervals with a 3-5m buffer is sampled when collecting diamond core</li> <li>Samples of Diamond core were selected based on a combination of alteration, sulphide percentage, and presence of quartz veining.</li> <li>Minimum core sample intervals of 0.3m and maximum sample intervals of 1.3m were used, with a nominal 1m sample length chosen.</li> <li>Sample intervals were determined by Torque geologists and cut in half for sampling in Kalgoorlie by an external contractor. All sampling processing and handling was conducted by Torque geologists.</li> <li>All sampling undertaken is relevant to the style of mineralisation and within best industry practice</li> <li>All samples collected are submitted to a certified commercial laboratory in Kalgoorlie and (or) Perth. The samples were analysed using the photon assay (Chrysos™ PAAU02) method which uses a 0.5kg sample and requires minimal handling. Samples are dried, crushed and homogenised to ensure homogeneity as uniform sample distribution is important to a quality analysis.</li> </ul>
Drilling techniques	<ul style="list-style-type: none"> <li>Drill type (e.g., core, reverse circulation, open-hole hammer, rotary air blast, auger, Bangka, sonic, etc) and details (e.g., core diameter, triple or standard tube, depth of diamond tails, face-sampling bit, or other type, whether core is oriented and if so, by what method, etc).</li> </ul>	<ul style="list-style-type: none"> <li>RC holes were drilled with a truck-mounted Schramm T685 fitted with a hands-free Sandvik DA554 rod-handler. The diamond rig was an 8x8 truck-mounted Sandvik DE-880 fitted with a hands-free rod handling system. Rod and air trucks are Mercedes 8 x 8 trucks with a 2400cfm 1000psi Hurricane booster and a 350psi/1270cfm auxiliary compressor. All equipment supplied by the drilling contractor.</li> <li>RC holes were drilled using a 145mm (5.5in) face-sampling drilling bit.</li> <li>Diamond drilling was cored using HQ and NQ/NQ2 diamond bits (triple tube).</li> <li>Relevant support vehicles were provided.</li> </ul>

<p><i>Drill sample recovery</i></p>	<ul style="list-style-type: none"> <li>• <i>Method of recording and assessing core and chip sample recoveries and results assessed.</i></li> <li>• <i>Measures taken to maximise sample recovery and ensure representative nature of the samples.</i></li> <li>• <i>Whether a relationship exists between sample recovery and grade and whether sample bias may have occurred due to preferential loss/gain of fine/coarse material.</i></li> </ul>	<ul style="list-style-type: none"> <li>• Diamond drilling gathers uncontaminated fresh core samples that are processed on the drill site to eliminate drilling fluids and cuttings, resulting in clean core for logging and analysis.</li> <li>• The RC samples were individually weighed to ensure control on recovery and sufficient sample material to be collected for the Photon analysis method. This was governed by field Geologists and drillers.</li> <li>• To ensure maximum sample recovery and the representivity of the samples, an experienced Company geologist was present during drilling to monitor the sampling process. Any issues were immediately rectified.</li> <li>• Sample recovery was recorded by the Company Field staff (Geologists or Assistants) based on how much of the sample is returned from the cyclone and cone splitter. This is recorded as good, fair, poor or no sample.</li> <li>• Torque is satisfied that the RC holes have taken a sufficiently representative sample of the interval and minimal loss of fines has occurred in the RC drilling resulting in minimal sample bias.</li> <li>• No twin RC drill holes have been completed to assess sample bias.</li> <li>• Core recoveries were recorded for each drill run by Torque personnel and recorded in the database</li> <li>• At this stage no investigations have been made into whether there is a relationship between sample recovery and grade.</li> </ul>
<p><i>Logging</i></p>	<ul style="list-style-type: none"> <li>• <i>Whether core and chip samples have been geologically and geotechnically logged to a level of detail to support appropriate Mineral Resource estimation, mining studies and metallurgical studies.</i></li> <li>• <i>Whether logging is qualitative or quantitative in nature. Core (or costean, channel, etc) photography.</i></li> <li>• <i>The total length and percentage of the relevant intersections logged.</i></li> </ul>	<ul style="list-style-type: none"> <li>• Torque geologists logged all RC chips and or Diamond core using current company logging methodology. Lithological logging is conducted on site and capturing occurs directly into a cloud hosted database (MX deposit).</li> <li>• The qualitative component of the logging describes oxidation state, grain size, lithology code assignment, and stratigraphy code assignment.</li> <li>• All 1m RC samples were sieved and chips collected into 20m chip trays for geological logging of colour, weathering, lithology, alteration and mineralisation for potential Mineral Resource estimation and mining studies.</li> <li>• RC and Diamond drilling (DD) logging is both qualitative and quantitative in nature.</li> <li>• The total length of the RC and DD holes were logged. Where no sample was returned due to cavities/voids it was recorded as such.</li> <li>• Logging was completed at sufficient detail to support interpretation and resource modelling purposes and initial mining studies.</li> <li>• All chips and drill core samples have been photographed following industry standards and information is being stored</li> </ul>
<p><i>Sub-sampling techniques and sample preparation</i></p>	<ul style="list-style-type: none"> <li>• <i>If core, whether cut or sawn and whether quarter, half or all cores taken.</i></li> <li>• <i>If non-core, whether riffled, tube sampled, rotary split, etc and whether sampled wet or dry.</i></li> <li>• <i>For all sample types, the nature, quality, and appropriateness of the sample preparation technique.</i></li> <li>• <i>Quality control procedures adopted for all sub-sampling stages to maximise representivity of samples.</i></li> <li>• <i>Measures taken to ensure that the sampling is representative of the in-situ material collected, including for instance results for field</i></li> </ul>	<ul style="list-style-type: none"> <li>• Sampling technique:             <ul style="list-style-type: none"> <li>• All RC samples were collected from the RC rig and were collected beneath the cyclone and then passed through the cone splitter, for each meter drilled</li> <li>• The samples were generally dry, and all attempts were made to ensure the collected samples were dry. However, on deeper portions of some of the drillholes some samples were logged as moist and/or wet.</li> <li>• The cyclone and cone splitter were cleaned with compressed air at the end of every completed hole.</li> <li>• Core samples were marked up during logging and sampled by cutting lengthwise in half and sampling</li> </ul> </li> </ul>

	<p><i>duplicate/second-half sampling.</i></p> <ul style="list-style-type: none"> <li>• <i>Whether sample sizes are appropriate to the grain size of the material being sampled.</i></li> </ul>	<p>half the core. Half core was sent to the laboratory for analysis with the remaining core retained in the core tray</p> <ul style="list-style-type: none"> <li>• The sample sizes were appropriate to correctly represent the mineralisation based on the style of mineralisation, the thickness and consistency of intersections, and the sampling methodology for the primary elements.</li> <li>• Quality Control Procedures <ul style="list-style-type: none"> <li>• At least one duplicate sample was collected every hole.</li> <li>• Certified Reference Material (CRM) samples were inserted, approximately every 50 samples</li> <li>• Blank washed sand material was inserted in the field approximately every 50 samples.</li> <li>• Overall QAQC insertion rate of 1:10 samples.</li> <li>• Laboratory repeats taken and standards inserted at pre-determined level specified by the laboratory.</li> <li>• The sample sizes are considered appropriate to correctly represent the mineralisation based on the style of mineralisation, the thickness and consistency of intersections, the sampling methodology and the assay value ranges expected for gold.</li> </ul> </li> </ul>
<p><i>Quality of assay data and laboratory tests</i></p>	<ul style="list-style-type: none"> <li>• <i>The nature, quality and appropriateness of the assaying and laboratory procedures used and whether the technique is considered partial or total.</i></li> <li>• <i>For geophysical tools, spectrometers, handheld XRF instruments, etc, the parameters used in determining the analysis including instrument make and model, reading times, calibrations factors applied and their derivation, etc.</i></li> <li>• <i>Nature of quality control procedures adopted (e.g., standards, blanks, duplicates, external laboratory checks) and whether acceptable levels of accuracy (i.e. lack of bias) and precision have been established.</i></li> </ul>	<ul style="list-style-type: none"> <li>• All samples were sent to Intertek or SGS laboratory in Kalgoorlie or Perth. Photon Assay method has shown to provide quick turnaround times and high accuracy.</li> <li>• Duplicates, blanks and samples containing standards are included in the samples submitted for analysis, as described above.</li> <li>• The quality control procedures employed and described above are considered to provide acceptable levels of accuracy and precision.</li> </ul>
<p><i>Verification of sampling and assaying</i></p>	<ul style="list-style-type: none"> <li>• <i>The verification of significant intersections by either independent or alternative company personnel.</i></li> <li>• <i>The use of twinned holes.</i></li> <li>• <i>Documentation of primary data, data entry procedures, data verification, data storage (physical and electronic) protocols.</i></li> <li>• <i>Discuss any adjustment to assay data.</i></li> </ul>	<ul style="list-style-type: none"> <li>• Significant intersections have been independently verified by alternative company personnel.</li> <li>• The Competent Person has visited the site and supervised the drilling and sampling processes used in the field.</li> <li>• All primary data related to logging and sampling are captured into Excel templates on palmtops or laptops and subsequently loaded up to a secure cloud platform database (MX deposit)</li> <li>• The database is managed by a qualified database geologist.</li> <li>• All paper copies of data have been stored.</li> <li>• No adjustments or calibrations have been made to any assay data, apart from resetting below detection values to half positive detection.</li> </ul>
<p><i>Location of data points</i></p>	<ul style="list-style-type: none"> <li>• <i>Accuracy and quality of surveys used to locate drill holes (collar and down-hole surveys), trenches, mine workings and other locations used in Mineral Resource estimation.</i></li> <li>• <i>Specification of the grid system used.</i></li> <li>• <i>Quality and adequacy of topographic control.</i></li> </ul>	<ul style="list-style-type: none"> <li>• All collars were initially located by a Geologist using differential RTK-GPS</li> <li>• Downhole surveys are being completed on all the RC/DD drill holes by the drillers. They used a True North seeking Gyro downhole tool to collect the surveys approximately every 5 -10m down the hole.</li> <li>• The grid system for the Paris Project is MGA_GDA94 Zone</li> </ul>

		<p>51.</p> <ul style="list-style-type: none"> <li>• Topographic data is collected by differential RTK-GPS</li> <li>• Topographic high-resolution (8cm) drone survey conducted by Goldfields Technical Services Pty in November 2023.</li> </ul>
<p><i>Data spacing and distribution</i></p>	<ul style="list-style-type: none"> <li>• <i>Data spacing for reporting of Exploration Results.</i></li> <li>• <i>Whether the data spacing, and distribution is sufficient to establish the degree of geological and grade continuity appropriate for the Mineral Resource and Ore Reserve estimation procedure(s) and classifications applied.</i></li> <li>• <i>Whether sample compositing has been applied.</i></li> </ul>	<ul style="list-style-type: none"> <li>• This programme is the ninth follow-up drilling programme across several different prospects.</li> <li>• There may still be variation in the drill spacing and drillhole orientation until geological orientations and attitude of mineralisation can be established with a suitable degree of certainty.</li> <li>• The spacing and distribution of the data points is generally sufficiently consistent to establish the degree of geological and grade continuity.</li> <li>• No Sample compositing have been applied to the reported drill holes. Samples were collected in 1m intervals, dispatched and assayed as they were collected as the sub-sample from the shoot.</li> </ul>
<p><i>Orientation of data in relation to geological structure</i></p>	<ul style="list-style-type: none"> <li>• <i>Whether the orientation of sampling achieves unbiased sampling of possible structures and the extent to which this is known, considering the deposit type.</i></li> <li>• <i>If the relationship between the drilling orientation and the orientation of key mineralised structures is considered to have introduced a sampling bias, this should be assessed and reported if material.</i></li> </ul>	<ul style="list-style-type: none"> <li>• The main lithological units are in predominantly north-south orientation and dipping sub-vertical. Mineralised structures at Paris are often oriented at approximately 290°. The possible presence of Riedel structures has led to several different drillhole azimuth orientations being used to generate further technical information and to intersect specific mineralised structures, but always with an attempt to drill orthogonal to the strike of the interpreted structure. Due to locally varying intersection angles between drillholes and lithological units, all results are defined as downhole widths. True widths are not yet known.</li> <li>• No drilling orientation and sampling bias has been recognised at this time and drilling is not considered to have introduced a sampling bias.</li> </ul>
<p><i>Sample security</i></p>	<ul style="list-style-type: none"> <li>• <i>The measures taken to ensure sample security.</i></li> </ul>	<ul style="list-style-type: none"> <li>• Samples collected are placed in calico bags at site and transported to the relevant Perth or Kalgoorlie laboratory by courier or company field personnel.</li> <li>• Sample security is not considered a significant risk.</li> </ul>
<p><i>Audits or reviews</i></p>	<ul style="list-style-type: none"> <li>• <i>The results of any audits or reviews of sampling techniques and data.</i></li> </ul>	<ul style="list-style-type: none"> <li>• The Company database was originally compiled from primary data by independent database consultants based on original assay data and historical database compilations. Data is now managed by suitably qualified in-house personnel.</li> <li>• Prior to this drilling program (2024) there has been reviews and audits on Torque's database and sampling techniques by two external consultants (SRK and MiningPlus). The outcomes of the reviews deemed Torque's database management, sampling techniques and QC to be on industry standard and adequate for the style of mineralisation.</li> <li>• No new external reviews have been conducted on the current reported drilling results; however internal reviews of the database and sampling techniques are ongoingly managed by qualified Torque staff.</li> </ul>

**Section 2** Reporting of Exploration Results (Criteria listed in the preceding section also apply to this section)

Criteria	JORC Code explanation	Commentary
<p><i>Mineral tenement and land tenure status</i></p>	<ul style="list-style-type: none"> <li><i>Type, reference name/number, location and ownership including agreements or material issues with third parties such as joint ventures, partnerships, overriding royalties, native title interests, historical sites, wilderness or national park and environmental settings.</i></li> <li><i>The security of the tenure held at the time of reporting along with any known impediments to obtaining a licence to operate in the area.</i></li> </ul>	<ul style="list-style-type: none"> <li>The relevant tenements (M15/498, M15/497, M15/496) are 100% owned by and registered to Torque Metals Limited.</li> <li>At the time of reporting, there are no known impediments to obtaining a licence to operate in the area and the tenements are in good standing.</li> </ul>
<p><i>Exploration done by other parties</i></p>	<ul style="list-style-type: none"> <li><i>Acknowledgment and appraisal of exploration by other parties.</i></li> </ul>	<ul style="list-style-type: none"> <li>In 1920, Paris Gold Mine Company was floated in Adelaide to take up a 12-month option over the mine area. Just to the south, another company had an option over the Paris South Gold Mine but soon abandoned it to focus attention on the Observation Gold Mine, 1 km to the north, which it abandoned in turn after only one month. The Paris Mine at the time contained 5 shafts and 2 costeans. Gold was said to be erratic in a quartz, schist, jasper lode jumbled by faults. At some point it was excavated as an open pit.</li> <li>Western Mining Corporation (WMC) started to explore the Paris area in the 1960s and relied on aerial magnetics supported by geological mapping to assess mineralisation potential. This work identified the basalt/gabbro contact as the major control for Paris style gold-copper mineralisation and extensions to the ultramafic units that host the nickel mineralisation around the Kambalda Dome. In the early 1970s the area was the focus of both nickel and copper-zinc exploration. Reconnaissance diamond drilling for nickel was undertaken by WMC that drilled on 5 lines spaced at 800m across the interpreted basal contact position of the Democrat Hill Ultramafic and the BLF. The basal contact of the Kambalda Komatiite (and equivalents) is host to all the nickel mines in the Kambalda district and is the primary exploration area of interest for nickel mineralisation. Base metal exploration involved reconnaissance mapping, gossan search, soil, and stream sediment sampling. In 1973, DHD 101 was drilled to follow up a copper anomaly on the Democratic Shale. Results showed the anomalous gossan values to be associated with a sulphidic shale with values in the range 0.1 to 0.2% Cu and 0.8-1.0% Zn. During the early 1980s, Esso Exploration Australia and Aztec Exploration Limited conducted exploration programs along strike from the Paris Mine. Primary area of interest was copper-zinc-(gold) mineralisation in the felsic volcanics. Work included geochemistry, geophysics, and drilling. The Boundary gossan was discovered, and later drill tested with a single diamond hole in 1984. This hole failed to locate the primary source of the anomalous surface geochemistry.</li> <li>In 1988, Julia Mines conducted an intensive drilling program comprising air core, RC and diamond holes concentrated around the Paris Mine. This work was successful in delineating extensions and parallel lodes to the known Paris mineralisation. both along strike and down plunge. Paris Gold Mine was developed and worked in 1989 by Julia Mines and produced 24koz gold, 17koz silver and 245t copper. Estimated recovered gold grade was 11.2g/t.</li> </ul>



For personal use only

		<ul style="list-style-type: none"> <li>• In 1989/90, WMC completed a six-hole diamond drilling program to test for depth extensions to the Paris mineralisation below the 180m depth. Results defined a narrow (1-2m) high-grade zone over 70m of strike and intersected hanging wall lodes 10m and 30m stratigraphically above the interpreted main lode. This was the last drilling program to be carried out on the Paris Mine by WMC. From 1994 to 1999, WMC focused their gold resource definition drilling on the HHH deposit and conducted a series of RC drilling campaigns resulting in 30m drill line spacings with holes every 10m to 20m along the lines. Elsewhere, exploration by WMC and later by St Ives Gold Mining Company identified several areas of interest based on favourable structural and geochemistry evaluations. The 7km x 1km long N-S trending soil anomaly at Strauss was systematically drill tested in 2000 and yielded encouraging results associated with the Butcher's Well Dolerite. Air core drilling in 2005 focussed on the southern strike extensions of the mineralisation discovered in the 2000 program with limited success.</li> <li>• Gold Fields Australia (SIGMC - St Ives Gold Mining Company) explored the area in 2008. The Paris and HHH deposits were tested as part of SIGMC's air core programme. Drilling (148 holes, 640m x 80m) focused on poorly exposed differentiated dolerite proximal to interpreted intrusives. The exploration potential was supported by a structural interpretation which highlighted strong NNW trending magnetic features with the apparent intersection of crustal-scale lineaments observed in the regional gravity images. Anomalous values are associated with a felsic intrusive in sediments on the western margin of the area of interest.</li> <li>• Austral Pacific Pty Ltd acquired the Paris Gold Project from SIGMC in July 2015. Mineral Resource and Reserve estimates were compiled in-house and exploitation of the Paris and HHH deposits focused on a staged approach with gold production as a priority and near mine exploration to follow.</li> </ul>
<p>Geology</p>	<ul style="list-style-type: none"> <li>• <i>Deposit type, geological setting, and style of mineralisation.</i></li> </ul>	<ul style="list-style-type: none"> <li>• The Paris Gold Project covers a north-south trending belt of Archaean granite-greenstone terrain, and most of the package is currently situated to the east of the Boulder Lefroy Structural Zone (BLSZ). Consequently, the Parker Domain dominates the project geology, defined as existing east of the BLFZ and bounded to the east by the Mount Monger Fault. The Parker Domain comprises a series of ultramafic and mafic units interlayered with felsic volcanoclastic and sediments. The stratigraphic sequence is like the Kambalda Domain.</li> <li>• Gold mineralisation is widespread, occurring in almost all parts of the craton, but almost entirely restricted to the supracrustal belts. Gold occurs as structurally and host-rock controlled lodes, sharply bounded high-grade quartz veins and associated lower-grade haloes of sulphide-altered wall rock. Mineralisation occurs in all rock types, although Fe-rich dolerite and basalt are the most common, and large granitic bodies are the least common hosts. Most deposits are accompanied by significant alteration, generally comprising an outer carbonate halo, intermediate to proximal potassic-mica and inner sulphide zones. The principal control on gold mineralisation is structure, at different scales, constraining both fluid flow and deposition positions.</li> </ul>

<p><i>Drill hole Information</i></p>	<ul style="list-style-type: none"> <li>• A summary of all information material to the understanding of the exploration results including a tabulation of the following information for all Material drill holes: <ul style="list-style-type: none"> <li>○ easting and northing of the drill hole collar</li> <li>○ elevation or RL (Reduced Level – elevation above sea level in metres) of the drill hole collar</li> <li>○ dip and azimuth of the hole</li> <li>○ down hole length and interception depth AND hole length.</li> </ul> </li> <li>• If the exclusion of this information is justified on the basis that the information is not Material and this exclusion does not detract from the understanding of the report, the Competent Person should clearly explain why this is the case.</li> </ul>	<ul style="list-style-type: none"> <li>• All relevant information for the drillholes reported in this announcement can be found in the relevant tables and appendices included herein. Only gold assays <math>\geq 0.03</math> ppm (0.03 g/t) are recorded in the assay data table, except where relevant as part of a longer intercept. All intercepts are presented as down-hole lengths.</li> </ul>
<p><i>Data aggregation methods</i></p>	<ul style="list-style-type: none"> <li>• In reporting Exploration Results, weighting averaging techniques, maximum and/or minimum grade truncations (e.g., cutting of high grades) and cut-off grades are usually Material and should be stated.</li> <li>• Where aggregate intercepts incorporate short lengths of high-grade results and longer lengths of low-grade results, the procedure used for such aggregation should be stated and some typical examples of such aggregations should be shown in detail.</li> <li>• The assumptions used for any reporting of metal equivalent values should be clearly stated.</li> </ul>	<ul style="list-style-type: none"> <li>• No high-grade cuts or caps have been applied to the assay results reported in this announcement.</li> <li>• Arithmetic length weighted averages are used: example 265m to 271m in hole 25PRC174 is reported as 6m @ 7.1 g/t gold, of contiguous samples, calculated as follows:  <math display="block">[(1m \cdot 5.97gpt) + (1m \cdot 10.08gpt) + (1m \cdot 11.2gpt) + (1m \cdot 7.16gpt) + (1m \cdot 3.7gpt) + (1m \cdot 4.57gpt)] / [6] = 42.68/6m = 7.1 \text{ g/t gold over 6m.}</math> </li> <li>• No metal equivalent values have been used.</li> </ul>
<p><i>Relationship between mineralisation widths and intercept lengths</i></p>	<ul style="list-style-type: none"> <li>• These relationships are particularly important in the reporting of Exploration Results.</li> <li>• If the geometry of the mineralisation with respect to the drill hole angle is known, its nature should be reported.</li> <li>• If it is not known and only the down hole lengths are reported, there should be a clear statement to this effect (e.g., 'down hole length, true width not known').</li> </ul>	<ul style="list-style-type: none"> <li>• All results are reported as downhole widths. Insufficient knowledge of the structural controls on the mineralisation and attitude of the mineralised horizons is known yet to allow true widths to be established.</li> </ul>
<p><i>Diagrams</i></p>	<ul style="list-style-type: none"> <li>• Appropriate maps and sections (with scales) and tabulations of intercepts should be included for any significant discovery being reported. These should include, but not be limited to a plan view of drill hole collar locations and appropriate sectional views.</li> </ul>	<ul style="list-style-type: none"> <li>• Appropriate maps and summary intercept tables are included in this report. Where sufficient structural data have been gathered to allow meaningful interpretation of the structural setting controlling the mineralisation, appropriate sections for significant discoveries are also included. Where structural data is as yet insufficient to allow meaningful interpretation, sections are not provided as to do so could be considered misleading.</li> </ul>
<p><i>Balanced reporting</i></p>	<ul style="list-style-type: none"> <li>• Where comprehensive reporting of all Exploration Results is not practicable, representative reporting of both low and high grades and/or widths should be practiced avoiding misleading reporting of Exploration Results.</li> </ul>	<ul style="list-style-type: none"> <li>• The individual assays for all drill hole intercepts mentioned herein are reported in Appendix 1, with the qualification that only gold assays <math>\geq 0.03</math> ppm (0.03 g/t) are shown, except where relevant as part of a longer intercept. All intercepts are presented as down-hole widths.</li> </ul>
<p><i>Other substantive exploration data</i></p>	<ul style="list-style-type: none"> <li>• Other exploration data, if meaningful and material, should be reported including (but not limited to): geological observations; geophysical survey results; geochemical survey results; bulk samples – size and method of treatment; metallurgical test results; bulk density, groundwater, geotechnical and rock characteristics; potential deleterious or</li> </ul>	<ul style="list-style-type: none"> <li>• All meaningful and material information has been included in the body of this announcement.</li> <li>• Torque's main exploration aim is to establish if any gold mineralisation present is significant enough to warrant advancement to resource definition. Torque continues to explore with the objective of compiling appropriate data to enable a resource to be defined. Previous announcements have reported the outcome of metallurgical testwork</li> </ul>



	<p><i>contaminating substances.</i></p>	<p>conducted to investigate the possible presence, and impact, of any other elements that might also be present within mineralised zones and which could be viewed by some to be deleterious. The metallurgical test work and characterisation studies clearly demonstrated that the presence of elements such as copper did not in any way adversely impact the gold recoveries from mineralised zones which remained more than 96% (see announcements including full technical reports as appendix, 27-Sep-2023 and 17-Dec-2024).</p>
<p><i>Further work</i></p>	<ul style="list-style-type: none"> <li>• <i>The nature and scale of planned further work (e.g., tests for lateral extensions or depth extensions or large-scale step-out drilling).</i></li> <li>• <i>Diagrams clearly highlighting the areas of possible extensions, including the main geological interpretations and future drilling areas, provided this information is not commercially sensitive.</i></li> </ul>	<ul style="list-style-type: none"> <li>• Plans for future work are discussed in the body of this announcement.</li> <li>• The possible locations, and extent, of follow-up drilling has not yet been confirmed but will likely include further RC and possibly diamond drilling.</li> </ul>

