

## UPDATED ANNOUNCEMENT

### EXCEPTIONAL ROCKCHIP AND SOIL RESULTS RECEIVED FOR ANTIMONY RIDGE, HORSE HEAVEN GOLD-ANTIMONY- SILVER-TUNGSTEN PROJECT, IDAHO, USA

**Resolution Minerals Ltd** (“RML” or the “Company”) (ASX: [RML](#); OTCQB: [RLMLF](#)) provides a clarification to the announcement released on 15 September 2025 titled “Exceptional Rock Chip and Soil Results from Antimony Ridge”.

This updated announcement makes the following updated disclosures:

- clarifies the relationship between stibnite and antimony,
- provides an updated figure 3,
- includes additional JORC table disclosures; and
- includes clarity in terms of previously released information concerning drill holes GGR12 and GGR-16.

**Authorised for release by the board of Resolution Minerals Ltd.**

For further information, please contact Aharon Zaetz Executive Director.

**Aharon Zaetz**  
Executive Director  
Resolution Minerals Ltd  
M: +61 424 743 098  
[ari@resolutionminerals.com](mailto:ari@resolutionminerals.com)

**Jane Morgan**  
Investor Relations  
Jane Morgan Management  
M: +61 405 555 618  
[jm@janemorganmanagement.com.au](mailto:jm@janemorganmanagement.com.au)

**Follow us:**

Website: [www.resolutionminerals.com](http://www.resolutionminerals.com) LinkedIn: @Resolution Minerals

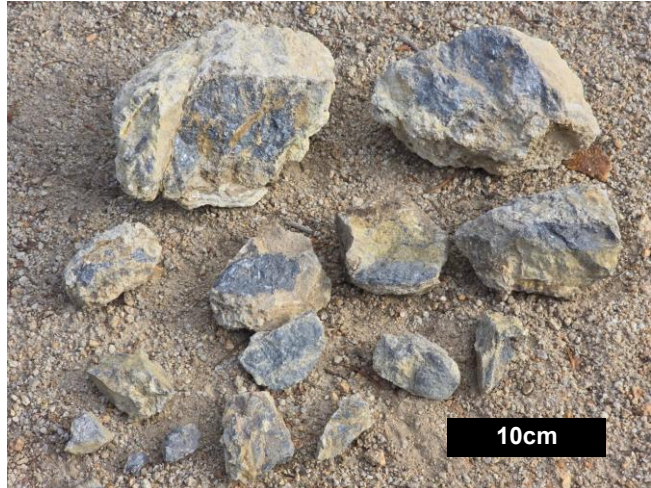
X: @Resolution\_LTD

## **EXCEPTIONAL ROCKCHIP AND SOIL RESULTS RECEIVED FOR ANTIMONY RIDGE, HORSE HEAVEN GOLD-ANTIMONY- SILVER-TUNGSTEN PROJECT, IDAHO, USA**

---

Very high-grade antimony (Sb) and silver (Ag) and strong gold (Au) assay results received as part of recently completed surface rockchip and soil sampling program at Antimony Ridge.

Peak rockchip results include grab sample 730253: 49.8% Sb, 1,420 g/t Ag and 3.12 g/t Au (the highest grades recorded at Horse Heaven to date) and grab sample 730255: 10.35% Sb, 68.5 g/t Ag and 4.43 g/t Au.



Peak soil results include Sample 931406: 0.5% Sb; and Sample 931242: 0.9g/t Au and 68g/t Ag.

These results support historical sampling which had delineated broad antimony-gold-silver mineralisation over significant widths at Antimony Ridge.

The Horse Heaven Project is directly adjacent to the Perpetua Resources' large Stibnite Gold Project.

---

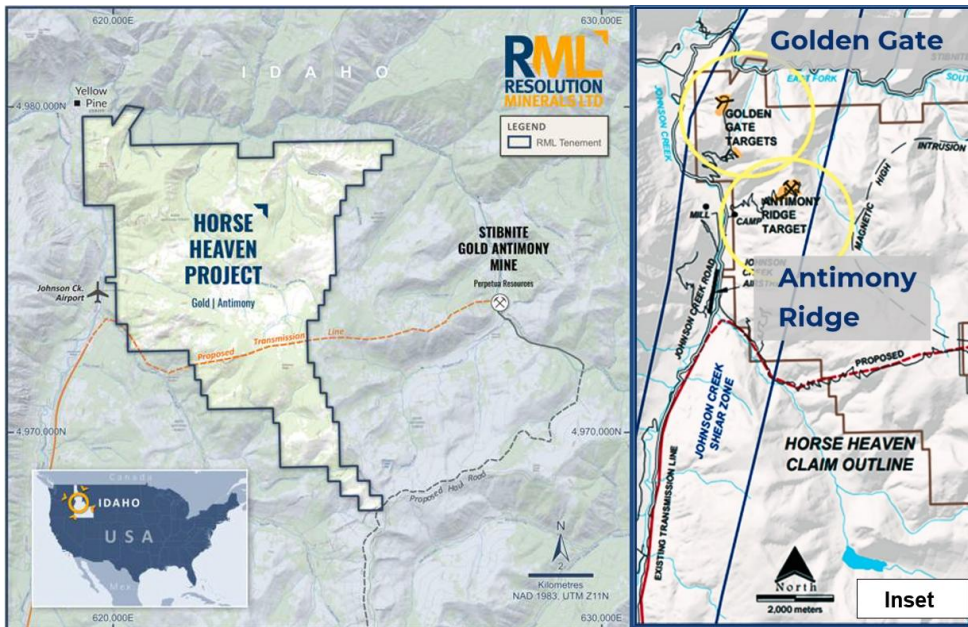
### **Highlights**

- Rock samples comprising massive stibnite (an antimony sulphide mineral) were collected from a historical antimony mine located at the Antimony Ridge Target as part of a comprehensive historical data verification program. Subsequent assay results have returned grades of **49.8% Sb, 1,420g/t Ag and 3.12g/t Au**.
- Soil sampling at Antimony Ridge helps define a NE-SW trending zone of Sb-Ag-Au mineralisation 1,000m x 700m, with assay results up to **0.5% Sb, 0.9g/t Au and 68g/t Ag** from an area southwest of prior sampling.
- The Antimony Ridge mineralised footprint is materially larger than previously known as a result of the soil Sb-Ag-Au results.
- Possible additional parallel Sb-Ag-Au zones of mineralisation are also indicated by the soil Sb-Ag-Au results.
- Prior trench rockchip results, up to **5.9g/t Au, 19% Sb and 367g/t Ag** are located centrally within this expanded NE-SW trending zone of Sb-Ag-Au mineralisation.
- Sb-Au-Ag mineralisation is exposed at surface along 500 metres of historical trenching where production of high-grade Antimony from small open pits was recorded during the periods of WWII, and into the early 1950s.

- ▶ Historical drilling at Antimony Ridge is reported to have intersected significant Au mineralisation (previously released to the market 11 June 2025 “*Agreement To Acquire Major Drill-Ready Antimony-Gold-Tungsten Project in Stibnite Mining District, Idaho, USA*”), including **2.11 g/t Au over 9.14m (true width unknown) in 87-GGR-12** and **1.15 g/t Au over 9.14m (true width unknown) in 87-GGR-16**, but drillholes were not assayed for Sb and only partially assayed for Ag.
- ▶ Follow-up work will include further rockchip sampling, mapping and bulk sampling at Antimony Ridge, that will help refine drill targets for a later planned drill program.
- ▶ Resolution is collecting representative samples of antimony from stibnite-silica vein exposures at Antimony Ridge to conduct preliminary metallurgical test work.
- ▶ Resolution is pleased to report that it has now completed 6 core drill holes at the ongoing Phase 1 drill program at the Golden Gate target, totalling 4,967 feet (1,513 meters) of drilling. The Company is currently drilling its 7th hole, and the program is proceeding at a good pace. Further, the first two holes have been logged, split and submitted to ALS for assaying. Initial results will be released when available.

## Details

Resolution Minerals Ltd (“RML” or the “Company”) (ASX: RML; OTCQB: RLMLF) is pleased to report exceptional rockchip and soil sampling results from the Antimony Ridge Target (“Antimony Ridge”) within the Horse Heaven Gold-Antimony-Tungsten Project in Idaho USA (“Horse Heaven”) (Figure1).



**Figure 1:** Horse Heaven Project location plan, highlighting the location of the two current major antimony-gold-silver-tungsten targets, the Golden Gate Target and the Antimony Ridge Target. Also highlighted is the Stibnite Gold Antimony Project, which is only 6kms east of Horse Heaven. Note: Coordinates are UTM metres north and east metric system, not latitude/longitude.

The Company is conducting an extensive surface sampling program at the Antimony Ridge and Golden Gate targets. The intention is to define a possible Sb-Au-Ag JORC compliant Exploration Target. Intrinsic in this program is the verification of past exploration results and past production data from both target areas.

The current results greatly enhance the prospectivity of Antimony Ridge, illustrating the potential of very high-grade mineralisation over an expanded mineralised footprint. It has become a large and consistently mineralised area of Sb, Au and Ag, which expands the target area within the Horse Heaven Antimony-Tungsten-Gold Project located in Idaho, U.S. (Figure 1).

### Rockchip Sampling Program at Antimony Ridge

A significant rockchip sampling program was conducted across the Horse Heaven Project area. As part of this program, seven samples were taken from Antimony Ridge (Appendix A).

Two rockchip samples, 730253 and 730255, were taken from a pile of ore material, found adjacent to an abandoned and overgrown mine (believed operational *circa* 1950s-1980s). Visual mineralisation is the antimony sulphide mineral, stibnite. **The stibnite is described as massive, and the estimated percentage of stibnite of the rock specimens is between 75% to 90%.**

Subsequent assay results of these two samples report exceptionally high grades of Sb and Ag, and strong grades of gold.

- ▶ Grab sample 730253: **49.8% Sb and 1,420 g/t Ag and 3.12 g/t Au**; and
- ▶ Grab sample 730255: **10.35% Sb, 68.5 g/t Ag and 4.43 g/t Au.**

Please refer to Appendix B for the locations of both samples 730253 and 730255.

The purpose of sampling stibnite ore material is to obtain an understanding of grades of antimony mineralisation considered historically to be of economic importance. This is important for the integration of historical production data into a possible future JORC-compliant Exploration Target and/or Resource figure. Knowledge of the Antimony Ridge ore material (grade and characteristics) is also extremely useful in interpreting current and future exploration results.

The competent person of this announcement is satisfied with the reliability of the sampling of the past ore material and the objective of doing so.



**Figure 2:** A rock sample collected from a historical mine located at the Antimony Ridge Target. Refer to Appendix B for sample locations. The photo shows a single rock specimen comprising the grey-silver coloured metallic mineral stibnite. Stibnite is an antimony sulphide ore mineral, containing 71.7% mol weight antimony. **The stibnite in this rock specimen is massive, containing between 75% and 90% stibnite.** Coarse to very fine stibnite crystals are visible which form an interwoven mass. Visual estimates also potentially provide no information regarding impurities or deleterious physical properties relevant to valuations. Samples similar to this photographed rock specimen have now been assayed. **As reported in this announcement the results are as follows: 730253: 49.8% Sb and 1,420 g/t Ag and 3.12 g/t Au. PLEASE REFER TO THE FOLLOWING SECTION FOR STIBNITE V'S SB %'s.**

### Visual Estimate of Stibnite and the Grade of Antimony in the Corresponding Sample

For clarify, please clearly read the following with respect to the visual estimate of **stibnite** (in the photos of ore material selected from near an old mine adit) and the subsequent grade of **antimony** in the corresponding grab rockchip sample 730253.

- 🚩 Stibnite is not Antimony.
- 🚩 Stibnite is an antimony mineral containing 0.741% *mol weight* Sb (as mentioned above).
- 🚩 Therefore 90% Stibnite =  $\pm 64\%$  Antimony.
- 🚩 Therefore 75% Stibnite =  $\pm 55\%$  Antimony.
- 🚩 The assay result for antimony (not stibnite) is 49.8% Antimony (chemical symbol: Sb).

The difference between the antimony grade of the visual estimate of **stibnite** and the assay result of **antimony** is within the range of that which is considered fair and reasonable for a visual estimate of stibnite. It is also clearly stated that the competent person considers it inappropriate to adjust initial estimates of stibnite, in this case downwards, after assays are known.

### Soil Sampling Program at Antimony Ridge

A soil sampling program (“Soil Program”) conducted across Antimony Ridge was recently completed. The Soil Program comprised 210 samples collected on a NE-SW orientated grid with a 100m line spacing and a 25m sample spacing (Appendix B). Assay results for Au, Ag, Sb and tungsten (W) are presented in Appendix C.

Sb, Au and Ag heat maps show geochemical anomalies representing a series of mineralised NE-SW zones that parallel/sub-parallel the main trend of mineralised *en echelon* structures that traverse the Antimony Ridge Target area (Figures 3A and 3B, and Appendix B). These repeated (or “stacked”) NE-SW Sb-Ag-Au mineralised zones form a broad corridor of mineralisation approximately 1,000m long and 700m wide. Several of these mineralised zones appear to be fault offset (Appendix B).

Importantly, this broad mineralised corridor (as defined by soil geochemistry) represents a materially larger mineralised footprint than previously known. Furthermore, this broad mineralised corridor is open-ended along strike in both directions and possible additional parallel NE-SW zones also possible.

### Past Channel Rockchip Exploration at Antimony Ridge

The soil results detailed in this announcement are put into context of the previous exploration results of Antimony Ridge.

Past trench rockchip sampling programs from the Lower Trench, Bowl Cut, Ridgetop and East Trench at Antimony Ridge identify significant Sb, Ag and Au mineralisation (RML ASX release “Agreement to Acquire Major US Antimony Project and Placement” on 11 June 2025) (Table 2, Figures 3 and 4) at Antimony Ridge. Of the sixty-one rockchip samples (channel and grab), collected in the 2022-23 program, more than 60% returned results greater than 1g/t Au, with peak values of **5.9g/t Au, 19% Sb and 367g/t Ag**.

As reported in the 11 June 2025 ASX announcement, mineralisation is hosted in veins and narrow breccias within an altered granodiorite which trend NE-SW.

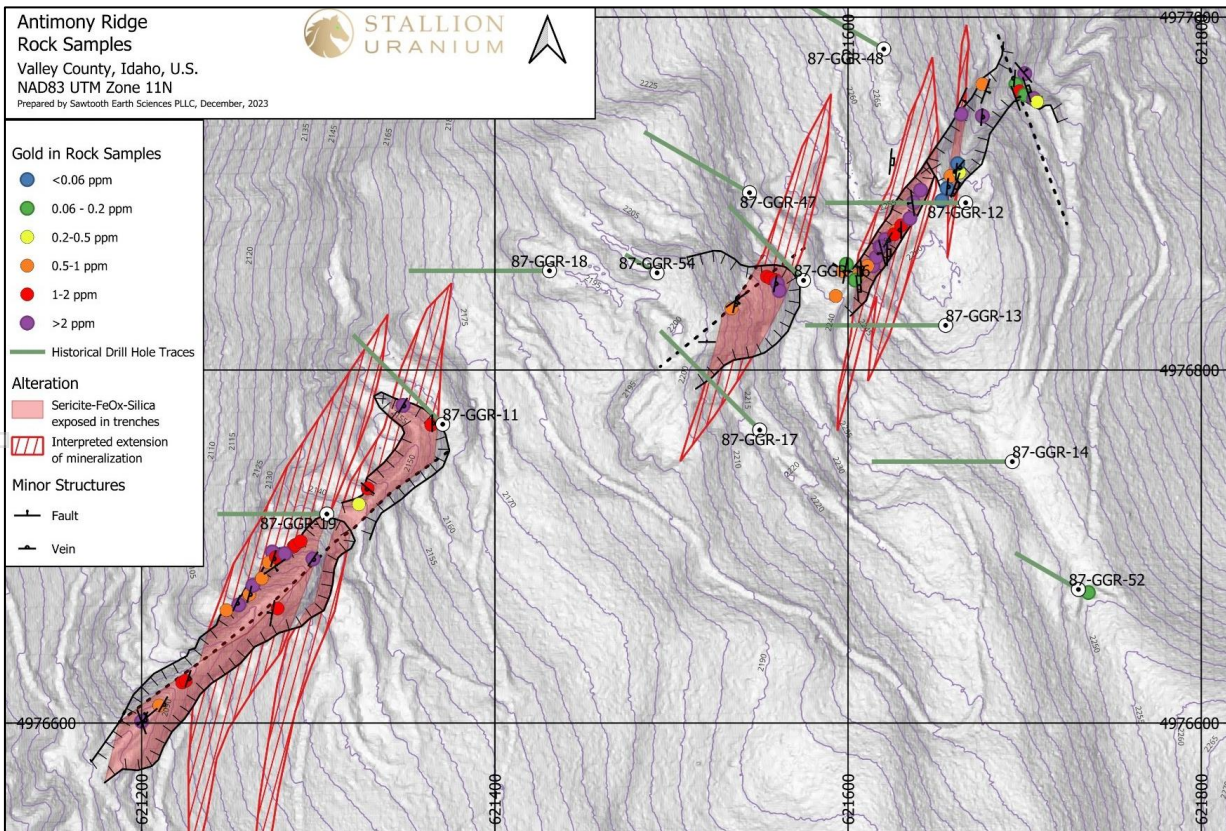
The recently generated NE-SW trending soil Sb-Ag-Au anomalies, described above, are entirely consistent with the spatial configuration of known Sb-Ag-Au mineralisation exposed in the Lower Trench, Bowl Cut, Ridgetop and East Trench. The six soil anomalies are parallel to veins and breccias of the trenches. This strongly indicates the presence of additional mineralised veins and breccias beyond those exposed in trenches and past mine workings. It is concluded that a much larger system of mineralised veins and breccias are inferred by the soil anomalism.

**Antimony Ridge Average Rock Sample Results By Area<sup>1</sup>**

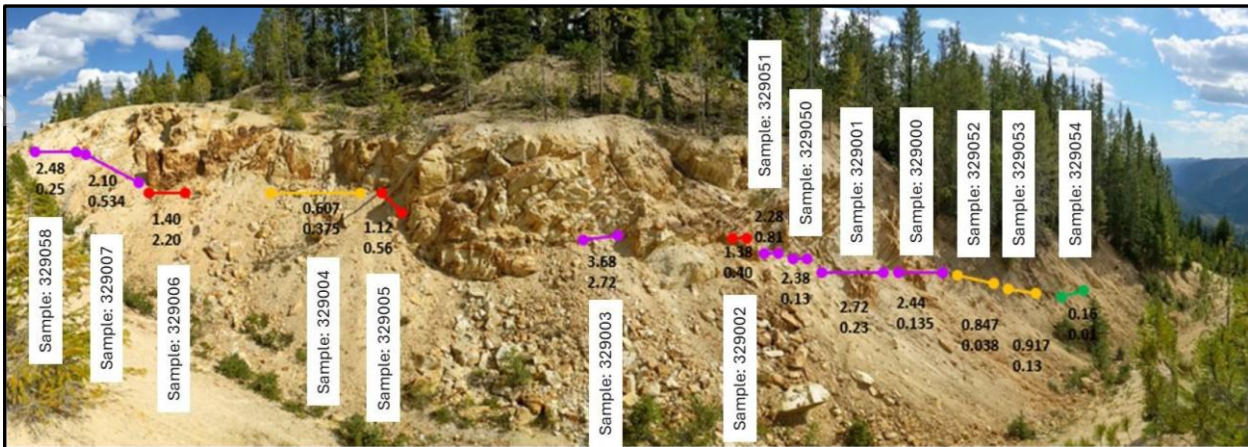
Sample Area	# Samples	Au g/t	Ag g/t	Sb %
Ridgetop Trench	14	1.89	31.4	0.69
Lower Trench	22	1.94	59.9	1.91
Bowl Cut	6	1.68	5.1	0.33
East Trench	18	0.87	6.3	0.14

<sup>1</sup> While efforts were made to collect representative samples, sample results may not reflect true widths and grades of mineralized materials. Values reported are straight averages and are not weighted by sample lengths

**Table 2: Average Au, Ag and Sb grades of rockchip sampling from the Ridgetop Trench, Lower Trench, Bowl Cut and East Trench (Figure 3 and Figure 4).**



**Figure 3: Gold results of rockchip sampling at Antimony Ridge (RML ASX release 11 June 2025).**



**Figure 4:** Landscape panorama photo of the Ridgetop trench. The rockchip channel sample locations are graphically illustrated in the photo with sample numbers (Refer RML Release 11 June 2025). The two figures below each colour bar are the gold (top) and antimony (bottom) grades as ppm and % respectively.

Significant past (and previously reported) rockchip channel samples from Antimony Ridge include:

- Rockchip sample 329003 with 3.68g/t gold, 303g/t silver and 2.72% antimony over 4m.
- Rockchip sample 329014 with 1.33g/t gold, 367g/t silver and 13.75% antimony over 1m.
- Rockchip sample 329015 with 4.65g/t gold, 70.5g/t silver and 19.15% antimony over 1m.
- Rockchip sample 329085 with 3.21g/t gold, 178g/t silver and 0.37% antimony over 3m.
- Rockchip sample 329089 with 5.99g/t gold, 246g/t silver and 0.71% antimony over 1m.

**RML’s CEO of U.S. Operations, Craig Lindsay, commented:**

*“We are very encouraged with the recent sampling program results from Antimony Ridge, which indicate that the mineralised target is larger than initially thought. As we expand outwards from the immediate area of the historic workings, we look to expand the target even further. Indeed, Horse Heaven is revealing itself to be a much larger opportunity as we conduct modern multi-disciplined exploration across the project area. It’s potential as a very significant antimony, gold, silver and tungsten project is crystalising.”*

**RML’s Senior Strategic Advisor, Steve Promnitz, commented:**

*“Not all Antimony is equal. High grades around 50% Sb are truly rare - and usually reflect crystalline antimony, potentially available for direct shipping ore as an oxide. This is because high grade antimony requires limited processing - and is therefore sought after.”*

**Expanded Mineralised Target in Soil Sampling - Antimony Ridge Target**

The Antimony Ridge soil sample program results for antimony, gold and silver has significantly expanded the target area to over 1,000m x 700m, open-ended in all directions, within the Horse Heaven Gold-Antimony-Tungsten Project (Figure 1, Appendix B).

Soil geochemistry now delineates mineralisation beyond past producing antimony workings, particularly NE of the historic Antimony Ridge trench. This strongly supports the increased

prospectivity and mineralised footprint of Antimony Ridge and, more broadly, the Project's potential to host significant antimony-gold-silver-tungsten mineralisation.

### **Bulk Sample Testing of Antimony Workings - Antimony Ridge Target – Horse Heaven**

The Company is currently collecting representative samples of stibnite-silica vein mineralisation from exposures at Antimony Ridge. These samples will be used to conduct initial metallurgical test work and mineralisation characterisation studies.

### **Next Steps**

The encouraging soil sampling and mapping at Antimony Ridge will lead to further rockchip sampling, planned bulk sampling and a drill program.

A thorough analysis of the rockchip results for Antimony Ridge and Golden Gate is ongoing. When the program is fully completed and assay results available, results will be released.

The Company is currently conducting a project-wide stream sediment program. When the program is completed and assay results available, results will be released.

In addition to the permitted and ongoing drilling at the Golden Gate target area, Resolution plans to apply for a permit to undertake Phase 1 drilling at Antimony Ridge.

### **Authorised for release by the board of Resolution Minerals Ltd.**

For further information, please contact Aharon Zaetz Executive Director.

#### **Aharon Zaetz**

Executive Director  
Resolution Minerals Ltd  
M: +61 424 743 098  
[ari@resolutionminerals.com](mailto:ari@resolutionminerals.com)

#### **Jane Morgan**

Investor Relations  
Jane Morgan Management  
M: +61 405 555 618  
[jm@janemorganmanagement.com.au](mailto:jm@janemorganmanagement.com.au)

### **Follow us:**

Website: [www.resolutionminerals.com](http://www.resolutionminerals.com) LinkedIn: @Resolution Minerals

X: @Resolution\_LTD

## **Competent Person's Statement**

*The information in this report that relates to exploration results, is based on and fairly represents information reviewed and compiled by Mr Ross Brown BSc (Hons), M AusIMM, Principal Geologist/director of exploration consulting firm, Riviere Minerals Pty. Ltd, who is a Member of the Australasian Institute of Mining and Metallurgy. Mr Brown has sufficient experience, which is relevant to the exploration activities, style of mineralisation and types of deposits under consideration, and to the activity which has been undertaken, to qualify as a Competent Person as defined in the 2012 Edition of the "Australasian Code for Reporting of Exploration Results, Mineral Resources and Ore Reserves". Riviere Minerals is consulting to Resolutions Minerals Limited and consents to the inclusion in this announcement of the matters based on their information in the form and context in which it appears.*

## About Riviere Minerals

*Riviere Minerals Pty Ltd (“Riviere”) is a resource consultancy specialising in project evaluation and portfolio management. Its principal geologist and sole director, Mr Ross Brown, has nearly 40 years of experience in mineral exploration worldwide. Through Riviere, Mr Brown also provides assistance in exploration planning, execution and ASX reporting.*

## Forward Looking Statements

*This announcement may contain forward-looking statements. These statements relate to the Company’s expectations, beliefs, intentions or strategies regarding the future. These statements can be identified by the use of words like “anticipate”, “believe”, “intend”, “estimate”, “expect”, “may”, “plan”, “project”, “will”, “should”, “seek” and similar words or expressions containing same. These forward-looking statements reflect the Company’s views and assumptions with respect to future events as of the date of this release and are subject to a variety of unpredictable risks, uncertainties, and other unknowns. Actual and future results and trends could differ materially from those set forth in such statements due to various factors, many of which are beyond our ability to control or predict. These include, but are not limited to, risks or uncertainties associated with the acquisition and divestment of projects, joint venture and other contractual risks, metal prices, exploration, development and operating risks, competition, production risks, sovereign risks, regulatory risks including environmental regulation and liability and potential title disputes, availability and terms of capital and general economic and business conditions.*

*Given these uncertainties, no one should place undue reliance on any forward-looking statements attributable to the Company, or any of its affiliates or persons acting on its behalf. Subject to any continuing obligations under applicable law, the Company disclaims any obligation or undertaking to disseminate any updates or revisions to any forward-looking statements in this announcement to reflect any change in expectations in relation to any forward-looking statements or any change in events, conditions or circumstances on which any such statement is based.*

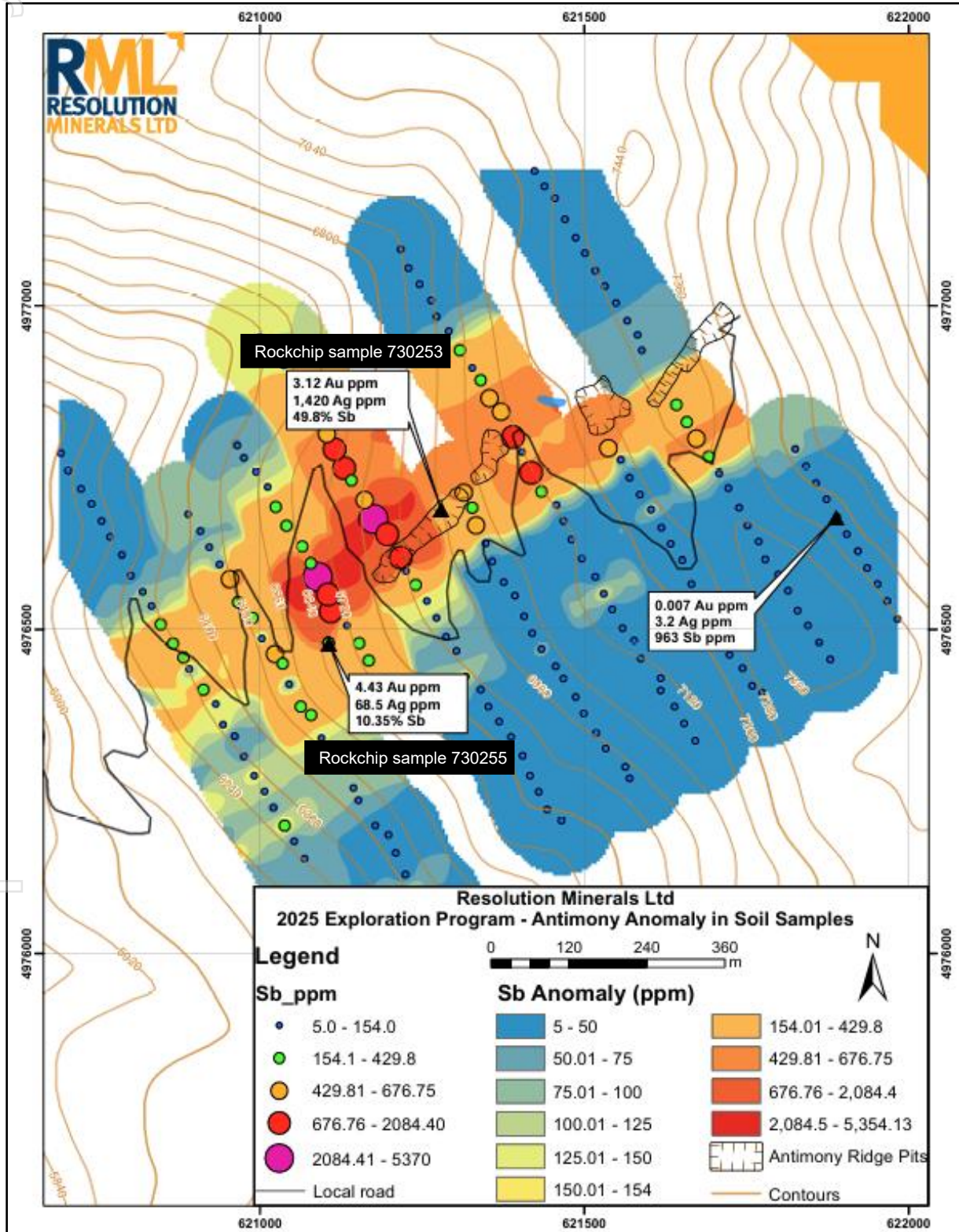
*The Company confirms it is not aware of any new information or data that materially affects the information cross referenced in this announcement and further to “Agreement to Acquire Major US Antimony Project and Placement” on 11 June 2025. The Company confirms that the form and context in which the Competent Person’s findings are presented have not been materially modified from the original announcements.*

## Appendix A: Rockchip Assay Results

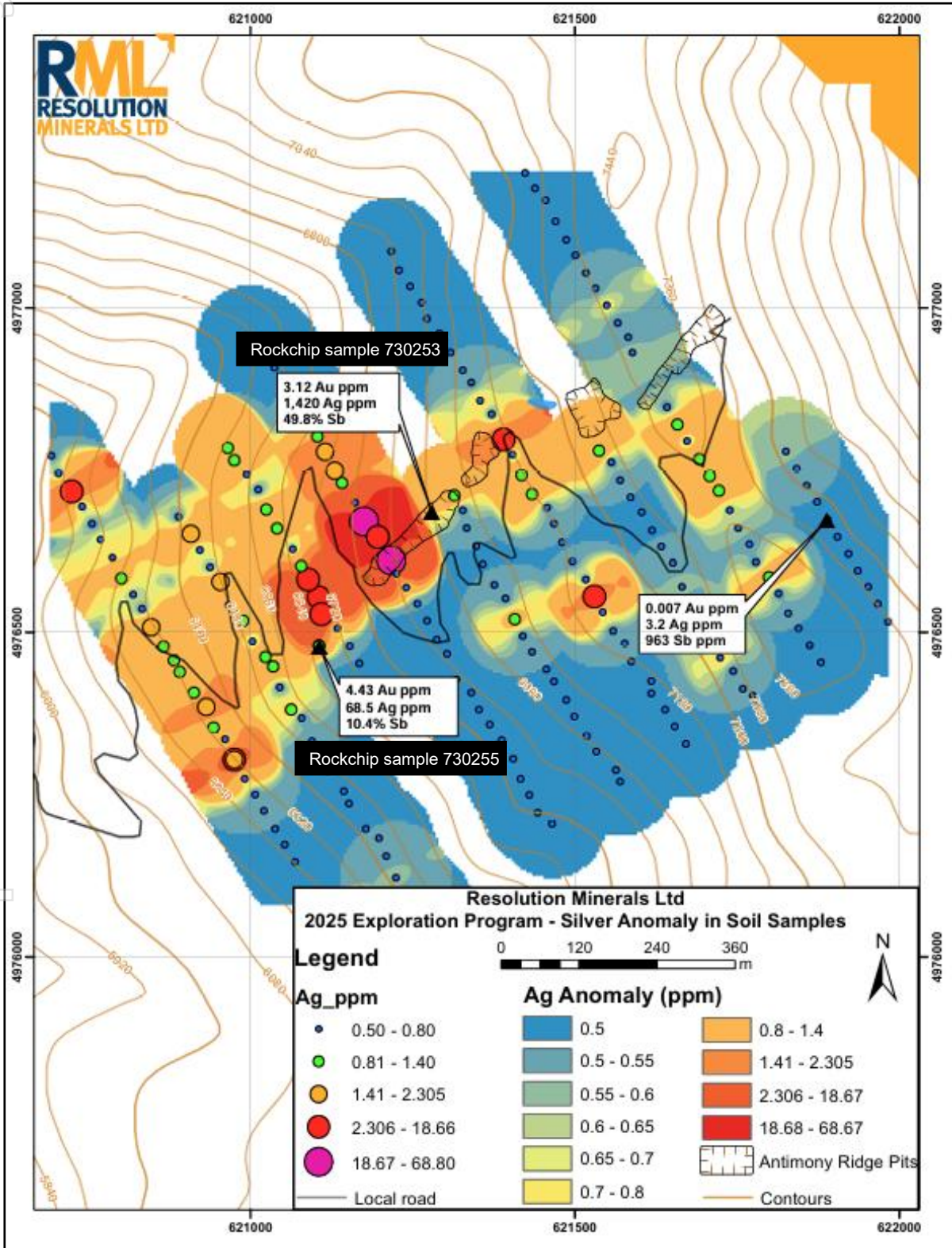
SampleID	Sampler	Date Sampled	Datum	Grid	Zone	Easting	Northing	Elevation_m	Au_ppm	Ag_ppm	Sb_ppm	W_ppm	Ag_ppm	Ag_ppm	Sb_%
730249	AAR	7/15/2025	NAD83	UTM	11T	621749	4976648	2261.585366	0.008	1	11	<10			
730250	AAR	7/15/2025	NAD83	UTM	11T	621757	4976626	2265.54878	0.017	<0.5	18	160			
730251	AAR	7/15/2025	NAD83	UTM	11T	621837	4976544	2218.292683	0.005	0.6	<5	10			
730252	AAR	7/15/2025	NAD83	UTM	11T	621837	4976544	2218.292683	<0.005	<0.5	<5	<10			
730253	B/S	7/21/2025	NAD83	UTM	11T	621279	4976686	2128	3.12	>100	>10000	<10	>1500	1420	49.8
730254	B/S	7/24/2025	NAD83	UTM	11T	621888	4976673	2219	0.007	3.2	963	<10			
730255	B/S	7/25/2025	NAD83	UTM	11T	621106	4976479	2065	4.43	68.5	>10000	<10			10.35

For personal use only

**Appendix B: Soil Sample Plans: Antimony Heat Map with location of rockchip samples 730253 and 730255.**

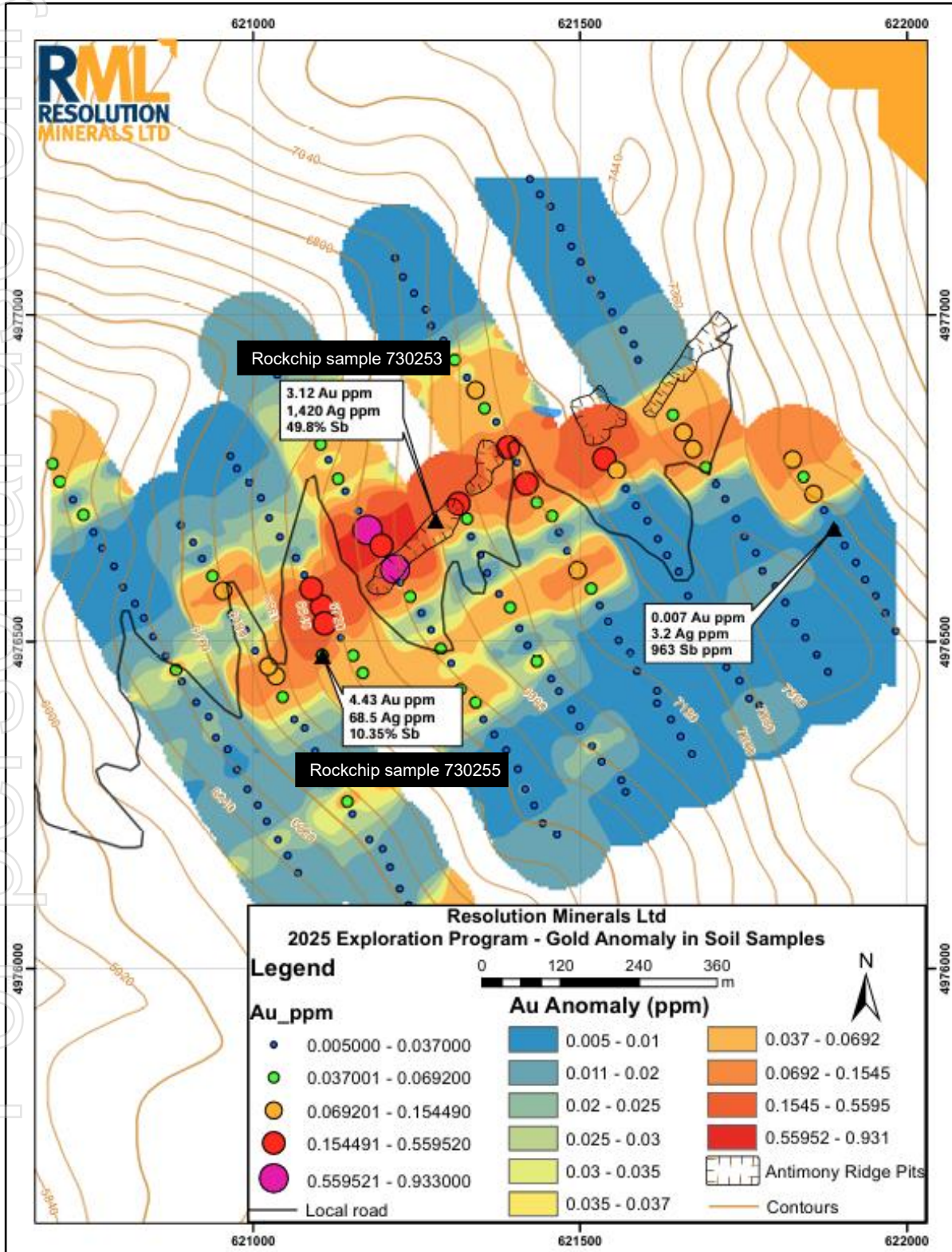


**Appendix B: Soil Sample Plans: Silver Heat Map with location of rockchip samples 730253 and 730255.**



For personal use only

**Appendix B: Soil Sample Plans: Gold Heat Map with location of rockchip samples 730253 and 730255.**



## Appendix C: Soil Sample Assay Results

*NOTE: For all tables, entries with no coordinates related to QAQC samples.*

SampleID	Datum	Grid	Zone	Easting	Northing	Elevation_m	Au_ppm	Ag_ppm	Sb_ppm	W_ppm
931201	NAD83	UTM	11T	621879	4976454	2237	<0.005	<0.5	<5	<10
931202	NAD83	UTM	11T	621862	4976480	2246	<0.005	<0.5	<5	10
931203	NAD83	UTM	11T	621845	4976506	2254	<0.005	<0.5	<5	<10
931204	NAD83	UTM	11T	621829	4976529	2258	<0.005	<0.5	<5	<10
931205	NAD83	UTM	11T	621814	4976560	2255	<0.005	<0.5	5	10
931206	NAD83	UTM	11T	621799	4976585	2249	0.021	1.3	24	<10
931207	NAD83	UTM	11T	621779	4976608	2242	0.012	0.5	15	<10
931208	NAD83	UTM	11T	621769	4976636	2239	<0.005	0.5	19	10
931209	NAD83	UTM	11T	621752	4976661	2238	<0.005	0.6	9	10
931210	NAD83	UTM	11T	621739	4976688	2235	0.007	0.6	47	<10
931211	NAD83	UTM	11T	620801	4976583	2234	0.006	0.9	37	10
931212	NAD83	UTM	11T	620819	4976558	2233	0.007	0.6	81	10
931213	NAD83	UTM	11T	620833	4976536	2235	0.005	0.5	78	<10
931214	NAD83	UTM	11T	620693	4976772	1858	0.046	0.5	41	20
931215	NAD83	UTM	11T	620704	4976745	1864	0.039	0.5	42	10
931216	NAD83	UTM	11T	620724	4976717	1880	0.011	3.1	25	10
931217	NAD83	UTM	11T	620740	4976694	1888	0.044	0.5	30	10
931218	NAD83	UTM	11T	620756	4976667	1884	0.005	<0.5	19	10
931219	NAD83	UTM	11T	620769	4976643	1890	0.005	0.7	28	10
931220	NAD83	UTM	11T	620787	4976615	1906	0.009	0.8	50	10
931221	NAD83	UTM	11T	620847	4976508	1941	0.02	1.5	203	<10
931222	NAD83	UTM	11T	620866	4976478	1942	0.012	1	193	10
931223	NAD83	UTM	11T	620882	4976457	1938	0.052	1.4	265	<10
931224	NAD83	UTM	11T				<0.005	<0.5	<5	<10
931225	NAD83	UTM	11T	620891	4976439	1942	0.016	1	84	10
931226	NAD83	UTM	11T	620913	4976407	1943	0.014	1	176	10
931227	NAD83	UTM	11T	620932	4976385	1946	0.021	2.3	145	10
931228	NAD83	UTM	11T	620943	4976353	1944	0.023	0.9	154	10
931229	NAD83	UTM	11T	620961	4976335	1943	0.008	0.8	40	<10
931230	NAD83	UTM	11T	620975	4976304	1936	0.007	5	71	10
931231	NAD83	UTM	11T	620975	4976304	1936	0.008	2.3	64	<10
931232	NAD83	UTM	11T	620991	4976274	1935	0.019	0.7	145	<10
931233	NAD83	UTM	11T	621007	4976250	1967	0.013	<0.5	105	<10
931234	NAD83	UTM	11T	621021	4976225	1969	0.014	<0.5	63	<10
931235	NAD83	UTM	11T	621038	4976197	1936	0.032	<0.5	155	<10
931236	NAD83	UTM	11T	621053	4976173	1940	0.018	<0.5	59	<10
931237	NAD83	UTM	11T	621069	4976146	1936	0.015	<0.5	51	<10
931238	NAD83	UTM	11T	621130	4976749	1937	0.05	2.2	747	10
931239	NAD83	UTM	11T	621141	4976730	1936	0.024	1.2	367	10
931240	NAD83	UTM	11T	621161	4976700	1936	0.037	0.7	446	10
931241	NAD83	UTM	11T				<0.005	<0.5	<5	<10
931242	NAD83	UTM	11T	621175	4976671	1940	0.933	68.8	3510	<10
931243	NAD83	UTM	11T	621196	4976647	1939	0.559	18.6	1485	<10
931244	NAD83	UTM	11T	621217	4976611	1969	0.611	25.3	2070	<10

## Appendix C: Soil Sample Assay Results

SampleID	Datum	Grid	Zone	Easting	Northing	Elevation_m	Au_ppm	Ag_ppm	Sb_ppm	W_ppm
931245	NAD83	UTM	11T	621225	4976590	1936	0.019	<0.5	96	<10
931246	NAD83	UTM	11T	621240	4976569	1935	0.052	<0.5	169	10
931247	NAD83	UTM	11T	621257	4976544	1967	0.015	<0.5	141	<10
931248	NAD83	UTM	11T	621272	4976518	1969	0.03	0.5	124	10
931249	NAD83	UTM	11T	621287	4976489	1948	0.053	<0.5	57	10
931250	NAD83	UTM	11T	621465	4976205	2074	0.019	<0.5	<5	<10
931251	NAD83	UTM	11T	621443	4976222	2084	0.013	<0.5	7	<10
931252	NAD83	UTM	11T	621430	4976249	2090	0.005	<0.5	8	<10
931253	NAD83	UTM	11T	621416	4976274	2093	0.011	<0.5	11	<10
931254	NAD83	UTM	11T	621000	4976951	1992	0.019	<0.5	147	<10
931255	NAD83	UTM	11T	621024	4976934	2003	0.014	<0.5	111	<10
931256	NAD83	UTM	11T	621037	4976908	2002	0.02	<0.5	135	<10
931257	NAD83	UTM	11T	621055	4976881	2009	0.019	<0.5	231	<10
931258	NAD83	UTM	11T	621069	4976855	2014	0.039	<0.5	258	<10
931259	NAD83	UTM	11T	621084	4976828	2004	0.019	0.5	214	<10
931260	NAD83	UTM	11T	621103	4976802	2020	0.048	1.4	524	<10
931261	NAD83	UTM	11T	621115	4976778	2033	0.031	2.2	710	10
931262	NAD83	UTM	11T	621405	4976305	2090	0.005	<0.5	5	<10
931263	NAD83	UTM	11T	621387	4976334	2089	<0.005	<0.5	12	<10
931264	NAD83	UTM	11T	621369	4976358	2096	<0.005	<0.5	12	<10
931265	NAD83	UTM	11T	621352	4976381	2098	0.027	<0.5	29	<10
931266	NAD83	UTM	11T	621340	4976407	2104	0.047	<0.5	40	10
931267	NAD83	UTM	11T	621317	4976427	2104	0.04	<0.5	113	<10
931268	NAD83	UTM	11T	621303	4976467	2114	0.029	0.5	60	10
931269							<0.005	<0.5	<5	<10
931270	NAD83	UTM	11T	621722	4976718	2235	0.014	1.1	17	10
931271	NAD83	UTM	11T	621708	4976741	2237	0.011	1.1	71	10
931272	NAD83	UTM	11T	621692	4976767	2238	0.064	1.1	269	<10
931273	NAD83	UTM	11T	621673	4976795	2240	0.094	0.7	644	10
931274	NAD83	UTM	11T	621658	4976820	2250	0.081	1.2	295	10
931275	NAD83	UTM	11T	621642	4976847	2254	0.055	<0.5	266	<10
931276	NAD83	UTM	11T	621589	4976931	2247	0.01	0.6	67	<10
931277	NAD83	UTM	11T	621582	4976955	2248	0.017	<0.5	55	10
931278	NAD83	UTM	11T	621566	4976977	2250	0.019	<0.5	68	<10
931279	NAD83	UTM	11T	621549	4977004	2242	<0.005	0.7	42	10
931280	NAD83	UTM	11T	621532	4977030	2246	<0.005	<0.5	17	<10
931281	NAD83	UTM	11T	621517	4977054	2243	<0.005	<0.5	14	<10
931282	NAD83	UTM	11T	621501	4977081	2242	<0.005	<0.5	12	<10
931283	NAD83	UTM	11T	621487	4977105	2239	<0.005	<0.5	14	<10
931284	NAD83	UTM	11T	621470	4977133	2233	<0.005	<0.5	19	10
931285	NAD83	UTM	11T	621455	4977166	2224	<0.005	<0.5	13	<10
931286	NAD83	UTM	11T	621439	4977184	2216	<0.005	<0.5	7	<10
931287	NAD83	UTM	11T	621423	4977208	2210	<0.005	<0.5	10	<10
931288							<0.005	<0.5	<5	<10

## Appendix C: Soil Sample Assay Results

SampleID	Datum	Grid	Zone	Easting	Northing	Elevation_m	Au_ppm	Ag_ppm	Sb_ppm	W_ppm
931289	NAD83	UTM	11T	620889	4976678	1911	0.009	<0.5	87	10
931290	NAD83	UTM	11T	620908	4976652	1976	0.029	1.5	74	10
931291	NAD83	UTM	11T	620922	4976627	1981	0.007	0.6	76	<10
931292	NAD83	UTM	11T	620938	4976600	1989	0.046	0.5	46	<10
931293	NAD83	UTM	11T	620954	4976578	1993	0.122	1.6	601	10
931294	NAD83	UTM	11T	621259	4976082	1965	0.05	<0.5	18	<10
931295	NAD83	UTM	11T	621238	4976097	1964	0.01	<0.5	112	<10
931296	NAD83	UTM	11T	621224	4976122	1971	0.013	0.7	29	10
931297	NAD83	UTM	11T	621224	4976122	1971	0.017	0.5	43	10
931298	NAD83	UTM	11T	621209	4976155	1970	0.01	<0.5	40	<10
931299	NAD83	UTM	11T	621198	4976183	1965	0.016	<0.5	23	<10
931300	NAD83	UTM	11T	621178	4976197	1969	0.024	<0.5	39	<10
931301	NAD83	UTM	11T	621152	4976236	1974	0.025	<0.5	70	<10
931302	NAD83	UTM	11T	621144	4976255	1979	0.047	<0.5	95	<10
931303	NAD83	UTM	11T	621119	4976287	1984	0.015	<0.5	85	<10
931304	NAD83	UTM	11T	621108	4976314	1990	0.022	<0.5	108	<10
931305	NAD83	UTM	11T	621095	4976332	1994	0.014	<0.5	129	<10
931306	NAD83	UTM	11T	621079	4976368	2004	0.022	<0.5	170	<10
931307	NAD83	UTM	11T	621063	4976381	2008	0.03	0.9	309	10
931308	NAD83	UTM	11T	621045	4976415	2003	0.04	<0.5	82	<10
931309	NAD83	UTM	11T	621035	4976447	2010	0.151	1.2	215	<10
931310	NAD83	UTM	11T	621023	4976462	2004	0.119	1.4	543	<10
931311	NAD83	UTM	11T	621003	4976486	2000	0.021	0.6	85	<10
931312	NAD83	UTM	11T	620989	4976518	2000	0.027	1.3	340	<10
931313	NAD83	UTM	11T	620966	4976542	2000	0.014	0.8	226	<10
931314	NAD83	UTM	11T	621314	4976711	2149	0.221	1.2	492	<10
931315	NAD83	UTM	11T	621327	4976688	2180	0.039	0.5	252	<10
931316	NAD83	UTM	11T	621333	4976661	2179	0.02	<0.5	507	<10
931317	NAD83	UTM	11T	621570	4976270	2139	<0.005	<0.5	<5	<10
931318							<0.005	<0.5	<5	<10
931319	NAD83	UTM	11T	621563	4976288	2154	0.009	<0.5	6	<10
931320	NAD83	UTM	11T	621533	4976316	2159	0.016	<0.5	7	<10
931321	NAD83	UTM	11T	621518	4976340	2162	0.03	<0.5	20	<10
931322	NAD83	UTM	11T	621499	4976370	2173	<0.005	<0.5	11	<10
931323	NAD83	UTM	11T	621487	4976396	2176	<0.005	<0.5	13	<10
931324	NAD83	UTM	11T	621468	4976424	2176	0.014	<0.5	39	<10
931325	NAD83	UTM	11T	621456	4976443	2178	0.014	<0.5	17	<10
931326	NAD83	UTM	11T	621434	4976470	2183	0.045	0.5	60	<10
931327	NAD83	UTM	11T	621420	4976494	2183	0.006	<0.5	19	<10
931328	NAD83	UTM	11T	621407	4976520	2151	0.021	1	41	10
931329	NAD83	UTM	11T	621393	4976552	2184	0.069	<0.5	38	<10
931330	NAD83	UTM	11T	621376	4976573	2176	0.037	<0.5	51	<10
931331	NAD83	UTM	11T	621358	4976605	2175	0.01	<0.5	35	<10
931332	NAD83	UTM	11T	621348	4976633	2175	0.028	<0.5	40	<10

## Appendix C: Soil Sample Assay Results

SampleID	Datum	Grid	Zone	Easting	Northing	Elevation_m	Au_ppm	Ag_ppm	Sb_ppm	W_ppm
931333	NAD83	UTM	11T	621537	4976780	2228	0.349	1.3	675	<10
931334	NAD83	UTM	11T	621556	4976762	2232	0.071	<0.5	41	<10
931335	NAD83	UTM	11T	621570	4976734	2231	0.006	<0.5	16	<10
931336	NAD83	UTM	11T	621586	4976708	2231	<0.005	<0.5	<5	<10
931337	NAD83	UTM	11T	621586	4976708	2231	<0.005	<0.5	<5	<10
931338	NAD83	UTM	11T	621603	4976685	2230	<0.005	<0.5	96	<10
931339	NAD83	UTM	11T	621619	4976657	2229	0.01	0.5	12	10
931340	NAD83	UTM	11T	621633	4976632	2225	<0.005	0.5	32	10
931341	NAD83	UTM	11T	621651	4976607	2230	0.005	<0.5	10	<10
931342	NAD83	UTM	11T	621774	4976402	2232	0.01	<0.5	9	<10
931343	NAD83	UTM	11T	621759	4976413	2227	0.013	<0.5	6	<10
931344	NAD83	UTM	11T	621744	4976440	2230	<0.005	<0.5	<5	<10
931345	NAD83	UTM	11T	621724	4976461	2222	<0.005	0.8	5	40
931346	NAD83	UTM	11T	621712	4976488	2221	<0.005	<0.5	<5	<10
931347	NAD83	UTM	11T	621694	4976516	2225	0.011	0.7	11	<10
931348	NAD83	UTM	11T	621682	4976549	2224	0.011	<0.5	<5	<10
931349							<0.005	<0.5	<5	<10
931350	NAD83	UTM	11T	621665	4976570	2224	<0.005	0.6	6	<10
931351	NAD83	UTM	11T	621217	4977087	2087	<0.005	<0.5	22	<10
931352	NAD83	UTM	11T	621229	4977058	2088	<0.005	<0.5	29	<10
931353	NAD83	UTM	11T	621246	4977033	2098	<0.005	<0.5	32	<10
931354	NAD83	UTM	11T	621264	4977008	2100	<0.005	<0.5	30	<10
931355	NAD83	UTM	11T	621272	4976983	2105	0.005	<0.5	45	<10
931356	NAD83	UTM	11T	621291	4976961	2100	0.014	<0.5	65	<10
931357	NAD83	UTM	11T	621308	4976931	2110	0.043	<0.5	197	<10
931358	NAD83	UTM	11T	621327	4976904	2110	0.023	<0.5	154	<10
931359	NAD83	UTM	11T	621340	4976885	2148	0.08	<0.5	316	10
931360	NAD83	UTM	11T	621354	4976857	2153	0.055	0.8	629	10
931361	NAD83	UTM	11T	621372	4976836	2157	0.023	<0.5	492	<10
931362	NAD83	UTM	11T	621671	4976328	2143	<0.005	<0.5	7	<10
931363	NAD83	UTM	11T	621654	4976355	2151	<0.005	0.5	6	<10
931364	NAD83	UTM	11T	621639	4976381	2147	<0.005	<0.5	<5	<10
931365	NAD83	UTM	11T	621618	4976406	2142	<0.005	<0.5	<5	10
931366	NAD83	UTM	11T	621618	4976425	2146	<0.005	<0.5	<5	<10
931367	NAD83	UTM	11T	621587	4976455	2144	<0.005	<0.5	5	<10
931368	NAD83	UTM	11T	621577	4976483	2146	<0.005	<0.5	13	<10
931369	NAD83	UTM	11T	621559	4976502	2166	<0.005	0.5	10	<10
931370	NAD83	UTM	11T	621543	4976531	2171	0.006	0.7	36	10
931371	NAD83	UTM	11T	621530	4976555	2173	0.013	2.4	133	20
931372	NAD83	UTM	11T	621517	4976581	2172	0.041	<0.5	29	10
931373							<0.005	<0.5	<5	<10
931374	NAD83	UTM	11T	621496	4976609	2165	0.124	<0.5	31	<10
931375	NAD83	UTM	11T	621480	4976639	2161	0.021	<0.5	23	<10
931376	NAD83	UTM	11T	621468	4976667	2161	<0.005	<0.5	12	<10

## Appendix C: Soil Sample Assay Results

SampleID	Datum	Grid	Zone	Easting	Northing	Elevation_m	Au_ppm	Ag_ppm	Sb_ppm	W_ppm
931377	NAD83	UTM	11T	621457	4976692	2162	0.042	<0.5	68	<10
931378	NAD83	UTM	11T	621434	4976713	2161	0.057	1.2	332	<10
931379	NAD83	UTM	11T	621434	4976713	2161	0.069	1.4	362	<10
931380	NAD83	UTM	11T	621418	4976742	2162	0.26	1.3	865	<10
931381	NAD83	UTM	11T	621404	4976774	2147	0.022	<0.5	90	<10
931382	NAD83	UTM	11T	621390	4976797	2146	0.246	2.6	733	<10
931383	NAD83	UTM	11T	621983	4976516	2191	<0.005	<0.5	<5	<10
931384	NAD83	UTM	11T	621967	4976544	2190	<0.005	<0.5	5	<10
931385	NAD83	UTM	11T	621952	4976570	2187	<0.005	<0.5	<5	<10
931386	NAD83	UTM	11T	621936	4976595	2188	<0.005	<0.5	<5	<10
931387	NAD83	UTM	11T	621922	4976621	2182	<0.005	<0.5	<5	<10
931388	NAD83	UTM	11T	621905	4976647	2181	0.007	<0.5	14	<10
931389	NAD83	UTM	11T	621890	4976674	2184	<0.005	<0.5	25	<10
931390	NAD83	UTM	11T	621873	4976701	2182	<0.005	<0.5	9	<10
931391	NAD83	UTM	11T	621857	4976726	2172	0.076	<0.5	27	<10
931392	NAD83	UTM	11T	621842	4976752	2165	0.06	<0.5	32	<10
931393	NAD83	UTM	11T	621825	4976779	2166	0.082	0.6	85	10
931394	NAD83	UTM	11T	620965	4976784	2004	0.006	1.4	47	<10
931395	NAD83	UTM	11T	620975	4976765	2012	0.008	1	67	<10
931396	NAD83	UTM	11T	620994	4976743	2023	0.012	0.8	113	<10
931397	NAD83	UTM	11T	621012	4976720	2028	0.017	<0.5	128	<10
931398							<0.005	<0.5	<5	<10
931399	NAD83	UTM	11T	621024	4976689	2034	0.027	1.1	186	<10
931400	NAD83	UTM	11T	621041	4976660	2058	0.027	1.1	428	<10
931401	NAD83	UTM	11T	621168	4976452	2080	0.048	0.5	185	10
931402	NAD83	UTM	11T	621153	4976479	2080	0.044	<0.5	202	<10
931403	NAD83	UTM	11T	621134	4976506	2073	0.037	<0.5	109	<10
931404	NAD83	UTM	11T	621109	4976528	2070	0.415	5.7	1645	<10
931405	NAD83	UTM	11T	621105	4976554	2071	0.473	9.9	1495	<10
931406	NAD83	UTM	11T	621089	4976581	2068	0.234	6.9	5370	<10
931407	NAD83	UTM	11T	621078	4976602	2065	0.021	1	202	<10
931408	NAD83	UTM	11T	621065	4976628	2062	0.014	0.5	199	<10

## Appendix D: JORC Code, 2012 Edition

### Section 1 Sampling Techniques and Data

(Criteria in this section apply to all succeeding sections.)

Criteria	JORC Code explanation	Commentary
<b>Sampling techniques</b>	<ul style="list-style-type: none"> <li>Nature and quality of sampling (eg cut channels, random chips, or specific specialised industry standard measurement tools appropriate to the minerals under investigation, such as down hole gamma sondes, or handheld XRF instruments, etc). These examples should not be taken as limiting the broad meaning of sampling.</li> <li>Include reference to measures taken to ensure sample representivity and the appropriate calibration of any measurement tools or systems used.</li> <li>Aspects of the determination of mineralisation that are Material to the Public Report.</li> <li>In cases where 'industry standard' work has been done this would be relatively simple (eg 'reverse circulation drilling was used to obtain 1 m samples from which 3 kg was pulverised to produce a 30 g charge for fire assay'). In other cases more explanation may be required, such as where there is coarse gold that has inherent sampling problems. Unusual commodities or mineralisation types (eg submarine nodules) may warrant disclosure of detailed information.</li> </ul>	<ul style="list-style-type: none"> <li>Current 2025 rockchip sampling includes locations in UTM metric data altitude data collected by either selective grab sample techniques or channel rockchip techniques.</li> <li>Data of two grab sample results, including a photographic record and assay data, are included in this release. The grab samples and photographic record of the material is representative of the massive stibnite recently discovered (refer immediately below).</li> <li>Visible mineralisation data is included in this release and is based on a new photographic record of recently discovered massive stibnite material.</li> <li>Current 2025 soil sampling includes locations in UTM metric data with altitude data collected at depths of 0.1m-0.3m at 25m intervals on sample lines 100m apart on a NW-SE grid straddling the main ridge at Antimony Ridge.</li> <li>Current 2025 drilling program is not discussed in this release</li> </ul>
<b>Drilling techniques</b>	<ul style="list-style-type: none"> <li>Drill type (eg core, reverse circulation, open-hole hammer, rotary air blast, auger, Bangka, sonic, etc) and details (eg core diameter, triple or standard tube, depth of diamond tails, face-sampling bit or other type, whether core is oriented and if so, by what method, etc).</li> </ul>	<ul style="list-style-type: none"> <li>Drilling is not discussed in this release.</li> </ul>
<b>Drill sample recovery</b>	<ul style="list-style-type: none"> <li>Method of recording and assessing core and chip sample recoveries and results assessed.</li> <li>Measures taken to maximise sample recovery and ensure representative nature of the samples.</li> <li>Whether a relationship exists between sample recovery and grade and whether sample bias may have occurred due to</li> </ul>	<ul style="list-style-type: none"> <li>Drilling is not discussed in this release.</li> <li>With respect to rockchip sample recovery rock samples were collected by hand. Where the purpose of the sample was to establish past ore material grades, such material was selected.</li> <li>and soil sample recovery, samples were recovered by</li> </ul>

Criteria	JORC Code explanation	Commentary
	<p><i>preferential loss/gain of fine/coarse material.</i></p>	<p>geotechnical personnel, with samples aimed to reflect the “C” horizon.</p>
<b>Logging</b>	<ul style="list-style-type: none"> <li>• <i>Whether core and chip samples have been geologically and geotechnically logged to a level of detail to support appropriate Mineral Resource estimation, mining studies and metallurgical studies.</i></li> <li>• <i>Whether logging is qualitative or quantitative in nature. Core (or costean, channel, etc) photography.</i></li> <li>• <i>The total length and percentage of the relevant intersections logged.</i></li> </ul>	<ul style="list-style-type: none"> <li>• Drilling is not discussed in this release.</li> <li>• With respect to rockchip teach sample was described.</li> <li>• With respect to soil samples this does not apply.</li> </ul>
<b>Sub-sampling techniques and sample preparation</b>	<ul style="list-style-type: none"> <li>• <i>If core, whether cut or sawn and whether quarter, half or all core taken.</i></li> <li>• <i>If non-core, whether riffled, tube sampled, rotary split, etc and whether sampled wet or dry.</i></li> <li>• <i>For all sample types, the nature, quality and appropriateness of the sample preparation technique.</i></li> <li>• <i>Quality control procedures adopted for all sub-sampling stages to maximise representivity of samples.</i></li> <li>• <i>Measures taken to ensure that the sampling is representative of the in situ material collected, including for instance results for field duplicate/second-half sampling.</i></li> <li>• <i>Whether sample sizes are appropriate to the grain size of the material being sampled.</i></li> </ul>	<ul style="list-style-type: none"> <li>• With respect to rockchip not sub-sampling was undertaken.</li> <li>• With respect to soil samples, samples were recovered by geotechnical personnel, using pick, shovel and auger, with samples aimed to reflect the “C” horizon.</li> </ul>
<b>Quality of assay data and laboratory tests</b>	<ul style="list-style-type: none"> <li>• <i>The nature, quality and appropriateness of the assaying and laboratory procedures used and whether the technique is considered partial or total.</i></li> <li>• <i>For geophysical tools, spectrometers, handheld XRF instruments, etc, the parameters used in determining the analysis including instrument make and model, reading times, calibrations factors applied and their derivation, etc.</i></li> <li>• <i>Nature of quality control procedures adopted (eg standards, blanks, duplicates, external laboratory checks) and whether acceptable levels of accuracy (i.e. lack of bias) and precision have been established.</i></li> </ul>	<ul style="list-style-type: none"> <li>• Rockchip and soil samples were dried, split and prepared at the laboratory with, standards and blanks were inserted on regular intervals not less than every 15 samples.</li> <li>• Laboratory techniques were as follows:</li> <li>• Gold assays were carried out using Fire Assay Fusion and Atomic Absorption Spectroscopy Finish (Proprietary code: AA-23).</li> <li>• Multi-element assays were carried out using Nitric Aqua Regia Digestion and Inductively Coupled Plasma - Atomic Emission Spectroscopy (Proprietary code: ME-ICP41).</li> </ul>

Criteria	JORC Code explanation	Commentary
<b>Verification of sampling and assaying</b>	<ul style="list-style-type: none"> <li>The verification of significant intersections by either independent or alternative company personnel.</li> <li>The use of twinned holes.</li> <li>Documentation of primary data, data entry procedures, data verification, data storage (physical and electronic) protocols.</li> <li>Discuss any adjustment to assay data.</li> </ul>	<ul style="list-style-type: none"> <li>The nature of the verification of assaying and laboratory was not conducted as this is the initial rockchip and soil sample survey discussed in this release.</li> <li>No data adjustments were made for the rockchip and soil assay results.</li> <li>No data adjustments were made except for the smoothing of data to generate coloured plots in Figures 2,5,7 to represent the soil data.</li> </ul>
<b>Location of data points</b>	<ul style="list-style-type: none"> <li>Accuracy and quality of surveys used to locate drill holes (collar and down-hole surveys), trenches, mine workings and other locations used in Mineral Resource estimation.</li> <li>Specification of the grid system used.</li> <li>Quality and adequacy of topographic control.</li> </ul>	<ul style="list-style-type: none"> <li>All data points (rockchip and soil sample location and assays) were collected using handheld GPS programmed into the local coordinate system. The accuracy of the GPS is in line with best practice standards.</li> </ul>
<b>Data spacing and distribution</b>	<ul style="list-style-type: none"> <li>Data spacing for reporting of Exploration Results.</li> <li>Whether the data spacing and distribution is sufficient to establish the degree of geological and grade continuity appropriate for the Mineral Resource and Ore Reserve estimation procedure(s) and classifications applied.</li> <li>Whether sample compositing has been applied.</li> </ul>	<ul style="list-style-type: none"> <li>Rockchip sampling described in this announcement was location/target specific and to that extent spaced relative to the target size.</li> <li>Soil sample programs reflect recent approaches used in the district.</li> <li>Soil sample spacing of 100m x 25m is appropriate for the intension purpose of the program, to create geochemical "heat maps" of the area.</li> </ul>
<b>Orientation of data in relation to geological structure</b>	<ul style="list-style-type: none"> <li>Whether the orientation of sampling achieves unbiased sampling of possible structures and the extent to which this is known, considering the deposit type.</li> <li>If the relationship between the drilling orientation and the orientation of key mineralised structures is considered to have introduced a sampling bias, this should be assessed and reported if material.</li> </ul>	<ul style="list-style-type: none"> <li>Rockchip sampling described in this announcement was location/target specific and to that extent orientation is relative to the characteristics of the target area.</li> <li>With reference to the immediate above conclusions, the competent person believes the orientation of the data (soil sampling) is, in a general sense only perpendicular to the average project-scale trend of mineralisation.</li> </ul>
<b>Sample security</b>	<ul style="list-style-type: none"> <li>The measures taken to ensure sample security.</li> </ul>	<ul style="list-style-type: none"> <li>The competent person was informed that measures taken to secure soil and rock chip samples was best practise as follows: Samples were collected in the field and kept stored at RML's campground in a locked</li> </ul>

Criteria	JORC Code explanation	Commentary
		<p>container; samples were taken directly from site to ALS Minerals preparatory laboratory in Twin Falls, Idaho by RML contractors in sealed, zip-tied bags. Samples were then passed to ALS Minerals representatives with appropriate chain of custody transfer documentation completed and kept on record</p>
<p><b>Audits or reviews</b></p>	<ul style="list-style-type: none"> <li><i>The results of any audits or reviews of sampling techniques and data.</i></li> </ul>	<ul style="list-style-type: none"> <li>The competent person was informed that audits or reviews for sampling technique and data, was not carried out. Exploration best practice analysis was carried out at the commencement of exploration at the Project. The review included, but was not limited to, all forms of sampling. From time to time, sampling techniques will be reviewed.</li> </ul>

For personal use only

**Section 2 Reporting of Exploration Results**

(Criteria listed in the preceding section also apply to this section.)

<b>Criteria</b>	<b>JORC Code explanation</b>	<b>Commentary</b>
<b>Mineral tenement and land tenure status</b>	<ul style="list-style-type: none"> <li>Type, reference name/number, location and ownership including agreements or material issues with third parties such as joint ventures, partnerships, overriding royalties, native title interests, past sites, wilderness or national park and environmental settings.</li> <li>The security of the tenure held at the time of reporting along with any known impediments to obtaining a licence to operate in the area.</li> </ul>	<ul style="list-style-type: none"> <li>This announcement refers to the one project, Horse Heaven project in Idaho USA, comprising six hundred and ninety-nine (699) U.S. Federal lode mining claims covering 5,644 hectares and includes six hundred and eighty-nine (689) mining claims and ten lode mining claims referred as the Oberbillig Group.</li> <li>The competent person understands that the mining claims are all in good standing.</li> </ul>
<b>Exploration done by other parties</b>	<ul style="list-style-type: none"> <li>Acknowledgment and appraisal of exploration by other parties.</li> </ul>	<ul style="list-style-type: none"> <li>No exploration results reported in this release were performed by other parties, except for past rockchip sampling work by Stallion Uranium Corp. with summary results provided in a Resolution Minerals Ltd ASX release dated 11 June 2025.</li> </ul>
<b>Geology</b>	<ul style="list-style-type: none"> <li>Deposit type, geological setting and style of mineralisation.</li> </ul>	<ul style="list-style-type: none"> <li>The project area is dominated by Cretaceous-aged granitic rocks relating to intrusive phases associated with the Atlanta Lobe of the Idaho Batholith. These largely granodiorite rocks have intruded Neoproterozoic-aged metasediments, comprising quartzites (which are dominant) calc-silicates, marble and black shale. The area and broader region is affected by broad regional folding and N-S, NNE-SSW, and NE-SW faults.</li> <li>Gold, antimony, tungsten and silver mineralisation is associated with hydrothermally altered and fractured granodiorites.</li> </ul>
<b>Drillhole Information</b>	<ul style="list-style-type: none"> <li>A summary of all information material to the understanding of the exploration results including a tabulation of the following information for all Material drillholes: <ul style="list-style-type: none"> <li>easting and northing of the drillhole collar</li> </ul> </li> </ul>	<ul style="list-style-type: none"> <li>Drilling is not discussed in this release.</li> </ul>

Criteria	JORC Code explanation	Commentary
	<ul style="list-style-type: none"> <li>○ elevation or RL (Reduced Level – elevation above sea level in metres) of the drillhole collar</li> <li>○ dip and azimuth of the hole</li> <li>○ down hole length and interception depth</li> <li>○ hole length.</li> </ul> <ul style="list-style-type: none"> <li>• If the exclusion of this information is justified on the basis that the information is not Material and this exclusion does not detract from the understanding of the report, the Competent Person should clearly explain why this is the case.</li> </ul>	
<b>Data aggregation methods</b>	<ul style="list-style-type: none"> <li>• In reporting Exploration Results, weighting averaging techniques, maximum and/or minimum grade truncations (eg cutting of high grades) and cut-off grades are usually Material and should be stated.</li> <li>• Where aggregate intercepts incorporate short lengths of high-grade results and longer lengths of low grade results, the procedure used for such aggregation should be stated and some typical examples of such aggregations should be shown in detail.</li> <li>• The assumptions used for any reporting of metal equivalent values should be clearly stated.</li> </ul>	<ul style="list-style-type: none"> <li>• Rockchip and soil sample assays are not adjusted.</li> </ul>
<b>Relationship between mineralisation widths and intercept lengths</b>	<ul style="list-style-type: none"> <li>• These relationships are particularly important in the reporting of Exploration Results.</li> <li>• If the geometry of the mineralisation with respect to the drillhole angle is known, its nature should be reported.</li> <li>• If it is not known and only the down hole lengths are reported, there should be a clear statement to this effect (eg 'down hole length, true width not known').</li> </ul>	<ul style="list-style-type: none"> <li>• With reference to the rockchip samples referred to in this announcement, the purpose of the program was to select past ore material found on overgrown piles adjacent to the mine adit. The subsequent assays provide grade of the samples only. No widths of mineralisation are included in this announcement.</li> <li>• With reference to soil samples, the competent person believes the orientation of the data is, in a general sense only perpendicular to the average project-scale trend of mineralisation.</li> </ul>
<b>Diagrams</b>	<ul style="list-style-type: none"> <li>• Appropriate maps and sections (with scales) and tabulations of intercepts</li> </ul>	<ul style="list-style-type: none"> <li>• Maps, plans, cross sections are provided with</li> </ul>

Criteria	JORC Code explanation	Commentary
	<i>should be included for any significant discovery being reported. These should include, but not be limited to a plan view of drillhole collar locations and appropriate sectional views.</i>	geolocation information (coordinates, northing and scale bar). Legends are included within each figure (where appropriate) and when additional explanation is required, this is given to the figure caption.
<b>Balanced reporting</b>	<ul style="list-style-type: none"> <li>Where comprehensive reporting of all Exploration Results is not practicable, representative reporting of both low and high grades and/or widths should be practiced to avoid misleading reporting of Exploration Results.</li> </ul>	<ul style="list-style-type: none"> <li>The competent person of this announcement considers the announcement to be fair and balanced, with additional care and caution noted in the body of the announcement regarding the historic nature of the results.</li> </ul>
<b>Other substantive exploration data</b>	<ul style="list-style-type: none"> <li>Other exploration data, if meaningful and material, should be reported including (but not limited to): geological observations; geophysical survey results; geochemical survey results; bulk samples – size and method of treatment; metallurgical test results; bulk density, groundwater, geotechnical and rock characteristics; potential deleterious or contaminating substances.</li> </ul>	<ul style="list-style-type: none"> <li>There is no material other data associated with new exploration results in this announcement.</li> </ul>
<b>Further work</b>	<ul style="list-style-type: none"> <li>The nature and scale of planned further work (eg tests for lateral extensions or depth extensions or large-scale step-out drilling).</li> <li>Diagrams clearly highlighting the areas of possible extensions, including the main geological interpretations and future drilling areas, provided this information is not commercially sensitive.</li> </ul>	<ul style="list-style-type: none"> <li>Follow-up work will include further rockchip sampling, mapping and bulk sampling at Antimony Ridge, that will lead to a later drill program.</li> </ul>