

Definitive Feasibility Study Begins for 'Stage 1' Production Targeting Phase 1 commissioning by the end of 2026

HIGHLIGHTS

- Existing fully permitted Central Gawler Mill adjacent to brownfield Challenger mines¹
- Challenger JORC (2012) Mineral Resources Estimate now 313koz Au (10.6Mt @ 0.92 g/t), including 194koz Au (1.87Mt @ 3.23 g/t) in existing open pit and underground mines, where:²
 - Challenger Main Open Pit: 70,000oz Au (0.65Mt @ 3.36 g/t Au);
 - Challenger West Open pit: 11,600oz Au (0.03Mt @ 10.7 g/t Au);
 - Challenger Underground (above 215mRL): 89,400oz Au (0.98Mt @ 2.84 g/t Au); and
 - Challenger Deeps (below 90mRL): 23,000oz Au (0.21Mt @ 3.50 g/t Au).
- Historical tailings storage facility with coarse, higher-grade tailings up to 0.6 – 1.0 g/t Au²
- Evaluating de-risked, two phase transition to operations with initial tailings reprocessing ('Phase 1') followed by the introduction of high-grade (~3 g/t) fresh ore ('Phase 2')
- Targeting Phase 1 commissioning by end of 2026; credit finance conversations underway

Barton Gold Holdings Limited (ASX:BGD, OTCQB:BGDFF, FRA:BGD3) (**Barton** or **Company**) is pleased to announce that a Definitive Feasibility Study (**DFS**) has started, targeting 'Stage 1' production utilising the fully permitted Central Gawler Mill (**CGM**) located at Barton's South Australian Challenger Gold Project (**Challenger**).

The JORC (2012) Mineral Resource Estimate (**MRE**) for Challenger was recently upgraded to 313koz Au, including 194koz Au high-grade fresh ore (~3.2 g/t Au) in or adjacent to existing serviceable open pit and underground development, and an historical Tailings Storage Facility 1 (**TSF1**) containing 56koz Au at a grade of 0.54 g/t Au.²

Barton is targeting March 2026 DFS completion and end of 2026 CGM commissioning, with 'Phase 1' operations reprocessing TSF1 materials, and 'Phase 2' then introducing fresh ore. Altris Pty Ltd (**Altris**) has been appointed to lead the DFS, with SRK Consulting (Australasia) Pty Ltd (**SRK Consulting**) completing TSF1 mining studies, Tetra Tech Coffey Pty Ltd (**Tetra Tech Coffey**) designing a tailings storage lift, and GPA Engineering Pty Ltd (**GPA**) supporting engineering, metallurgy and process plant design. Technical site visits will begin this week.

Commenting on the start of the Stage 1 DFS, Barton Managing Director Alexander Scanlon said:

"With gold prices at all-time highs and over 300koz Au JORC Resources adjacent to the Central Gawler Mill, the opportunity to leverage our existing infrastructure to operations and cash flow has never been more attractive.

"We are wasting no time pursuing this opportunity, targeting a low-cost and low-risk transition to operations by the end of 2026, the re-rating of Barton's equity to a 'producer' profile, and operating free cash flows to fund our planned regional growth at Tunkillia. We look forward to sharing regular updates during an exciting 18 months ahead."

¹ Refer to Prospectus dated 14 May 2021 and ASX announcement dated 21 July 2025

² Refer to ASX announcement dated 8 September 2025

Barton Gold Holdings Limited

ACN: 633 442 618
ASX: **BGD**
FRA: **BGD3**
OTCQB: **BGDFF**

www.bartongold.com.au

Registered Office

Level 4, 12 Gilles Street
Adelaide, SA 5000 Australia

T +61 8 9322 1587

E contact@bartongold.com.au

Company Directors

Kenneth Williams	Non Executive Chairman
Alexander Scanlon	Managing Director & CEO
Christian Paech	Non Executive Director
Graham Arvidson	Non Executive Director

Fully permitted infrastructure and mines

Challenger and the CGM are fully permitted for operations, with normal operations last occurring during mid-2018 before the site and CGM were placed on care and maintenance.³

All Challenger mineralisation is adjacent to the CGM, with additional lower-grade stockpiles and higher-grade mill residuals (eg. ball mill rejects) located on the Run of Mine (**ROM**) pad. These materials are not included in the Challenger MRE. TSF1 is the smaller of two historical tailings facilities, and is located ~1km west of the CGM.

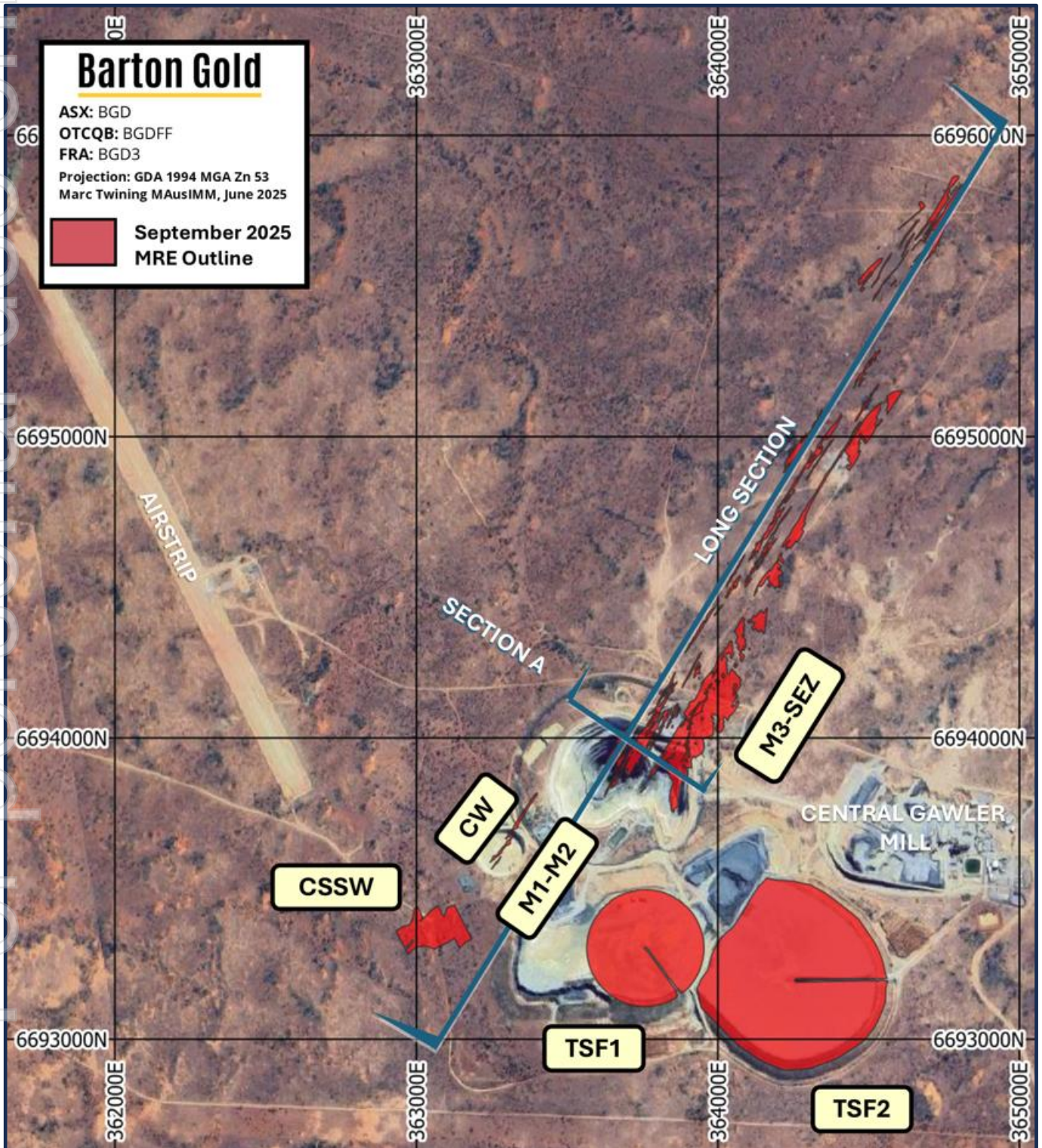


Figure 1 - Challenger site map with locations of key infrastructure and JORC (2012) MRE deposits⁴

³ Refer to Prospectus dated 14 May 2021

⁴ Refer to ASX announcement dated 8 September 2025

Preliminary low-cost CGM reinstatement estimate

Preliminary engineering analysis by Ammjohn Solutions (**Ammjohn**) estimated the full reinstatement of the CGM to its original 600ktpa fresh ore configuration to cost A\$26m (±30%), including (among others) upgrades to mill motors, automation and a new pre-leach thickener to improve efficiency.⁵

Challenger open pit, underground & tailings mineralisation

An updated Challenger JORC (2012) MRE was reported on 8 September 2025, as shown in Table 1.⁶

Zone	Indicated			Inferred			TOTAL		
	Mt	g/t Au	Koz Au	Mt	g/t Au	Koz Au	Mt	g/t Au	Koz Au
Challenger Main Open Pit	0.17	2.69	14.8	0.48	3.61	55.2	0.65	3.36	70.0
Challenger Underground (above 215mRL)	--	--	--	0.98	2.84	89.4	0.98	2.84	89.4
Challenger Deeps (below 90mRL)	--	--	--	0.21	3.50	23.0	0.21	3.50	23.0
Challenger West open pit	--	--	--	0.03	10.7	11.6	0.03	10.7	11.6
Challenger SSW Deposit	--	--	--	0.40	0.95	12.2	0.40	0.95	12.2
Tailings Storage Facility 1	3.19	0.54	55.5	--	--	--	3.19	0.54	55.5
Tailings Storage Facility 2	5.13	0.31	51.8	--	--	--	5.13	0.31	51.8
TOTAL	8.49	0.45	122	2.09	2.84	191	10.6	0.92	313

* Totals subject to rounding; tonnages are dry metric tonnes; all Mineral Resources classified as 'Inferred' are approximate; cut-off grades applied are 2.0 (Deeps) 1.0 g/t Au (UG above 215 mRL), 0.5 g/t Au (Main Open Pit, Challenger West, SSW) and 0.0 g/t Au (TSF1 and TSF2).

Table 1 - Challenger JORC (2012) Mineral Resources Estimate (September 2025)⁶

TSF1 has been identified as a potentially attractive reprocessing opportunity. TSF1 serviced the highest grade open pit and underground operations in the Challenger Main Open Pit and Underground.⁶

Metallurgical testwork indicates these materials to be coarse, with a grain size of up to 225µm instead of the design target size of 75µm, resulting in a peripheral ring of higher-grade materials with potential recoveries of 65-70% via regrinding to 38µm, or 75-80% via high-efficiency fine grinding.⁶

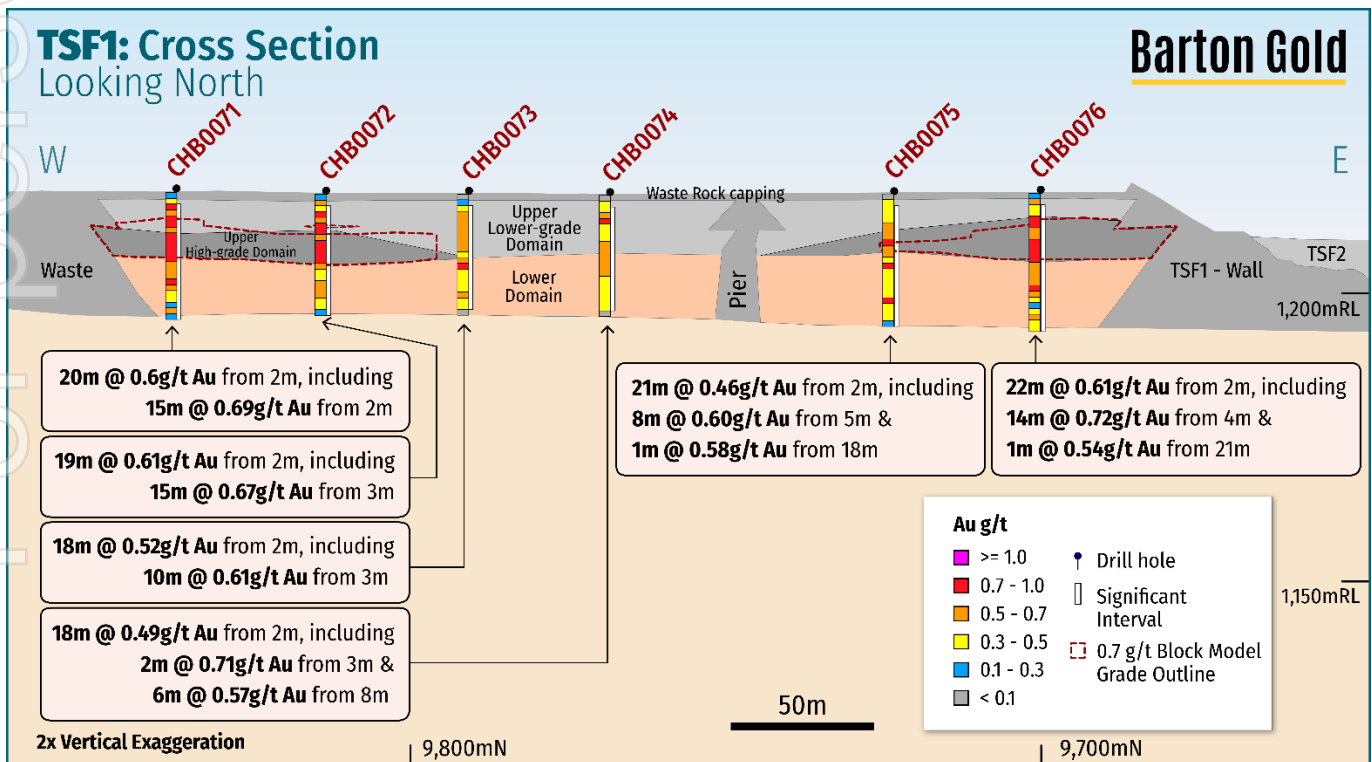


Figure 2 - Cross section showing higher-grade peripheral TSF1 materials & 0.7g/t Au grade shell⁵

⁵ Refer to ASX announcement dated 21 July 2025

⁶ Refer to ASX announcement dated 8 September 2025

Authorised by the Board of Directors of Barton Gold Holdings Limited.

For further information, please contact:

Alexander Scanlon

Managing Director

a.scanlon@bartongold.com.au

+61 425 226 649

Jade Cook

Company Secretary

cosec@bartongold.com.au

+61 8 9322 1587

For personal use only

About Barton Gold

Barton Gold is an ASX, OTCQB and Frankfurt Stock Exchange listed Australian gold developer targeting future gold production of 150,000ozpa with **2.2Moz Au & 3.1Moz Ag JORC Mineral Resources** (79.9Mt @ 0.87g/t Au), brownfield mines, **and 100% ownership of the region's only gold mill** in the renowned Gawler Craton of South Australia.*

Challenger Gold Project

- 313koz Au + fully permitted Central Gawler Mill (**CGM**)

Tarcoola Gold Project

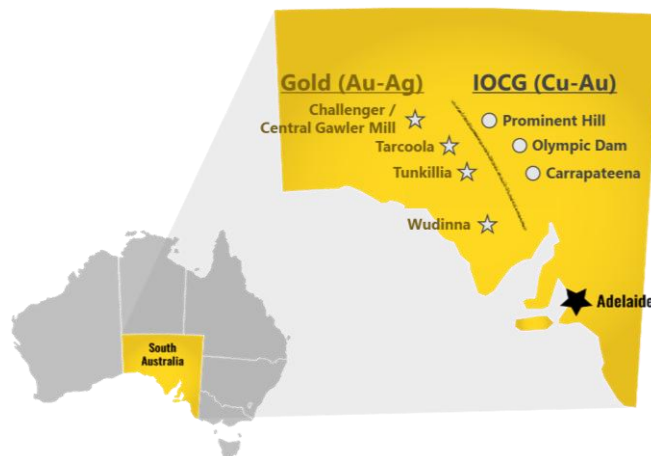
- 20koz Au in fully permitted open pit mine near CGM
- Tolmer discovery grades up to 84g/t Au & 17,600g/t Ag

Tunkillia Gold Project

- 1.6Moz Au & 3.1Moz Ag JORC Mineral Resources
- Competitive 120kozpa gold & 250kozpa silver project

Wudinna Gold Project

- 279koz Au project located southeast of Tunkillia
- Significant optionality, adjacent to main highway



Competent Persons Statement & Previously Reported Information

The information in this announcement that relates to the historic Exploration Results and Mineral Resources as listed in the table below is based on, and fairly represents, information and supporting documentation prepared by the Competent Person whose name appears in the same row, who is an employee of or independent consultant to the Company and is a Member or Fellow of the Australasian Institute of Mining and Metallurgy (**AusIMM**), Australian Institute of Geoscientists (**AIG**) or a Recognised Professional Organisation (RPO). Each person named in the table below has sufficient experience which is relevant to the style of mineralisation and types of deposits under consideration and to the activity which he has undertaken to qualify as a Competent Person as defined in the JORC Code 2012 (**JORC**).

Activity	Competent Person	Membership	Status
Tarcoola Mineral Resource (Stockpiles)	Dr Andrew Fowler (Consultant)	AusIMM	Member
Tarcoola Mineral Resource (Perseverance Mine)	Mr Ian Taylor (Consultant)	AusIMM	Fellow
Tarcoola Exploration Results (until 15 Nov 2021)	Mr Colin Skidmore (Consultant)	AIG	Member
Tarcoola Exploration Results (after 15 Nov 2021)	Mr Marc Twining (Employee)	AusIMM	Member
Tunkillia Exploration Results (until 15 Nov 2021)	Mr Colin Skidmore (Consultant)	AIG	Member
Tunkillia Exploration Results (after 15 Nov 2021)	Mr Marc Twining (Employee)	AusIMM	Member
Tunkillia Mineral Resource	Mr Ian Taylor (Consultant)	AusIMM	Fellow
Challenger Mineral Resource (above 215mRL)	Mr Ian Taylor (Consultant)	AusIMM	Fellow
Challenger Mineral Resource (below 90mRL)	Mr Dale Sims	AusIMM / AIG	Fellow / Member
Wudinna Mineral Resource (Clarke Deposit)	Ms Justine Tracey	AusIMM	Member
Wudinna Mineral Resource (all other Deposits)	Mrs Christine Standing	AusIMM / AIG	Member / Member

The information relating to historic Exploration Results and Mineral Resources in this announcement is extracted from the Company's Prospectus dated 14 May 2021 or as otherwise noted in this announcement, available from the Company's website at www.bartongold.com.au or on the ASX website www.asx.com.au. The Company confirms that it is not aware of any new information or data that materially affects the Exploration Results and Mineral Resource information included in previous announcements and, in the case of estimates of Mineral Resources, that all material assumptions and technical parameters underpinning the estimates, and any production targets and forecast financial information derived from the production targets, continue to apply and have not materially changed. The Company confirms that the form and context in which the applicable Competent Persons' findings are presented have not been materially modified from the previous announcements.

Cautionary Statement Regarding Forward-Looking Information

This document may contain forward-looking statements. Forward-looking statements are often, but not always, identified by the use of words such as "seek", "anticipate", "believe", "plan", "expect", "target" and "intend" and statements that an event or result "may", "will", "should", "would", "could", or "might" occur or be achieved and other similar expressions. Forward-looking information is subject to business, legal and economic risks and uncertainties and other factors that could cause actual results to differ materially from those contained in forward-looking statements. Such factors include, among other things, risks relating to property interests, the global economic climate, commodity prices, sovereign and legal risks, and environmental risks. Forward-looking statements are based upon estimates and opinions at the date the statements are made. Barton undertakes no obligation to update these forward-looking statements for events or circumstances that occur subsequent to such dates or to update or keep current any of the information contained herein. Any estimates or projections as to events that may occur in the future (including projections of revenue, expense, net income and performance) are based upon the best judgment of Barton from information available as of the date of this document. There is no guarantee that any of these estimates or projections will be achieved. Actual results will vary from the projections and such variations may be material. Nothing contained herein is, or shall be relied upon as, a promise or representation as to the past or future. Any reliance placed by the reader on this document, or on any forward-looking statement contained in or referred to in this document will be solely at the readers own risk, and readers are cautioned not to place undue reliance on forward-looking statements due to the inherent uncertainty thereof.

* Refer to Barton Prospectus dated 14 May 2021 and ASX announcement dated 8 September 2025. Total Barton JORC (2012) Mineral Resources include 1,049koz Au (39.7Mt @ 0.82 g/t Au) in Indicated category and 1,186koz Au (40.2Mt @ 0.92 g/t Au) in Inferred category, and 3,070koz Ag (34.5Mt @ 2.80 g/t Ag) in Inferred category as a subset of Tunkillia gold JORC (2012) Mineral Resources.