

MULTIPLE NEW HIGH GRADE URANIUM PROSPECTS IDENTIFIED

Key Highlights:

- The B8A uranium prospect reveals extensive high-grade results over 240m with surface sampling returning grades up to 1,786 ppm U₃O₈
- The Monte Bello uranium prospect reveals extensive high-grade grade surface samples up to 1,988 ppm U₃O₈
- The Tjilpa uranium prospect returned surface sample results up to 977 ppm U₃O₈, with historic high-grade drilling intercepts including:
 - 1m @ 1,004 ppm U₃O₈ from 6m (TJDDH01)
 - 16m @ 347 ppm U₃O₈ from 166m (TJDDH01)
 - 3m @ 742 ppm U₃O₈ from 166m (TJDDH03)
- Maiden uranium drill program on the Queens Gift prospect is targeted for early November. Significant historical drill intercepts at Queens Gift include¹:
 - 23m @ 746ppm U₃O₈ from 74m incl. 8m @ 1,596ppm U₃O₈ (QGDC002)
 - 31m @ 609ppm U₃O₈ from 46m incl. 6m @ 1,133ppm U₃O₈ (QGRC047)
 - 4m @ 2,298ppm U₃O₈ (QGRC078)
- AM5's Mt Isa North Project surrounds Paladin Energy's (ASX:PDN) Valhalla Project (148.3Mlbs @ 728 ppm U₃O₈)² which is Australia's 3rd largest uranium resource

Antares Metals Ltd (ASX: AM5) (Antares, AM5 or the Company) is pleased to share an update relating to exploration results from the Mt Isa North Copper and Uranium Project in northwest Queensland.

Building on the previously completed uranium prospectivity analysis³ which identified 49 targets, Antares is continuing to conduct ground truthing of targets highlighted by the uranium prospectivity review and investigating newly identified anomalies.

The B8A uranium prospect was identified as a high-priority uranium target, with field activities revealing high-grade mineralisation at surface over 240m with results up to 1,786 ppm U₃O₈. The Tjilpa uranium prospect returned values up to 977ppm U₃O₈, and the Monte Bello uranium prospect returned 1,988 ppm U₃O₈.

All three prospects represent high-priority drill targets with further field activities planned to determine the most prospective targets for drill testing.

¹ AM5 ASX Release - Transformational Mt Isa Cu U Acquisition – 28 August 2024.

² Paladin Energy Annual Report 2025

³ AM5 ASX Announcement 4 February 2025 – Uranium Prospectivity Review

ANTARES
METALS LIMITED
ASX: AM5

SOI: 514.8M
Share Price: \$0.008
Market Cap: \$4.1M
Cash: \$1.3M (30 June 25)

DIRECTORS & MANAGEMENT

Mark Connelly
NE Chairman

Johan Lambrechts
CEO

Bruno Seneque
NE Director

Richard Maddocks
NE Director

Suzie Foreman
CFO & CoSec

CONTACT

Level 1, 43 Ventnor Ave,
West Perth, WA, 6005
info@antaresmetals.com.au
antaresmetals.com.au

Chief Executive Officer, Johan Lambrechts, commented:

“Our systematic exploration continues to highlight the outstanding uranium prospectivity across the Mt Isa North Project, with recent high-grade results at B8A, Tjilpa and Monte Bello confirming a growing pipeline of potential uranium drill targets.

“Alongside these developments, we continue to advance the Queens Gift Project, which hosts significant historical high-grade intercepts and remains a key focus as we prepare for future drilling.

“While uranium is a major focus, we are also maintaining momentum on our priority copper prospects, including Conglomerate Creek, where activities are underway to progress toward drill testing.

“With our tenure strategically surrounding Paladin Energy’s Valhalla Project, and Glencore’s Mt Isa Copper mine, AM5 is well-positioned to unlock value across both uranium and copper opportunities.”

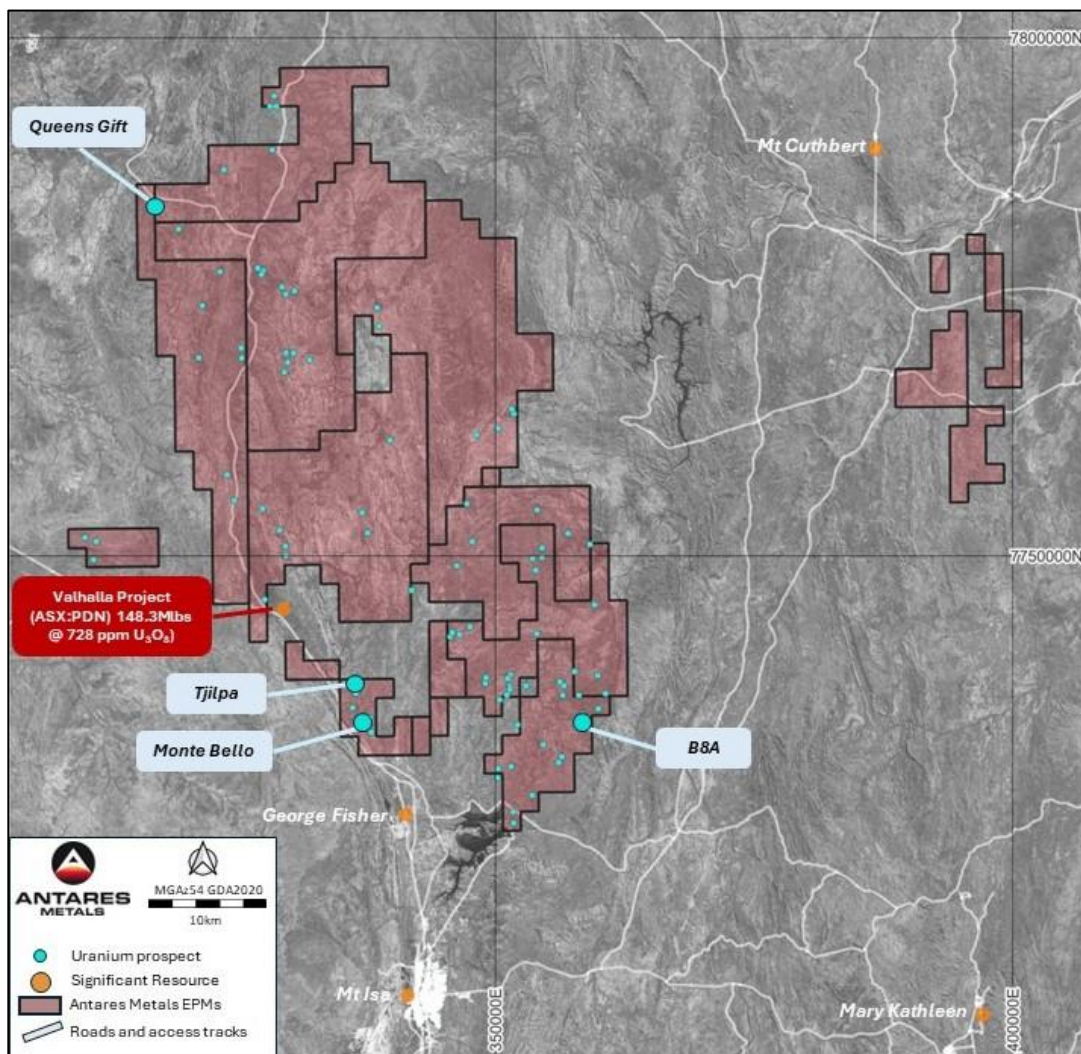


Figure 1. Uranium targets and reconnaissance activities within the AM5 Mt Isa North Copper and Uranium Project

B8A Uranium Prospect

The B8A uranium prospect is located on EPM 27439 and is a discrete radiometric anomaly discovered by Carpentaria Exploration Company in 1965.

The anomaly consists of a succession of meta-basalts and meta-sediments of the Cromwell Meta-basalt suite and exhibits two sets of faulting. An east-west set of transverse faults and a north-south set of longitudinal faults. The uranium anomaly appears associated with the north-south shears.

Antares Geologists utilised the RS-225 spectrometer to track the mineralisation for more than 240m before the outcrops crossed east-west orientated creeks and disappeared beneath cover to the north and south. The spectrometer analysis returned U_3O_8 grades up to 1,786 ppm.

The initial work by Antares indicated that the mineralisation at B8A is structurally controlled and associated with zones of strong albite/hematite alteration. Like other AM5 uranium prospects in the region, the nearby Skal deposit, owned by Paladin Energy, is considered an analogue for the B8A prospect, as both are characterised by a series of mineralised lenses truncated and offset by faults.

The Company has identified the B8A prospect as having strong uranium potential, and field activities are planned over the prospect in the coming weeks. The tenure of the uranium results may justify an initial drill program to determine the potential of B8A to host economic mineralisation.

Table 1. Summary of B8A prospect RS-225 assay data

Prospect	Sample ID	U (ppm)	U_3O_8	K [%]	Th [ppm]
B8A	ASS97	777	917	9	370
B8A	ASS99	1494	1761	12	403
B8A	ASS100	1514	1786	14	521
B8A	ASS103	1316	1551	10	131
U8A	ASS104	836	985	8	53

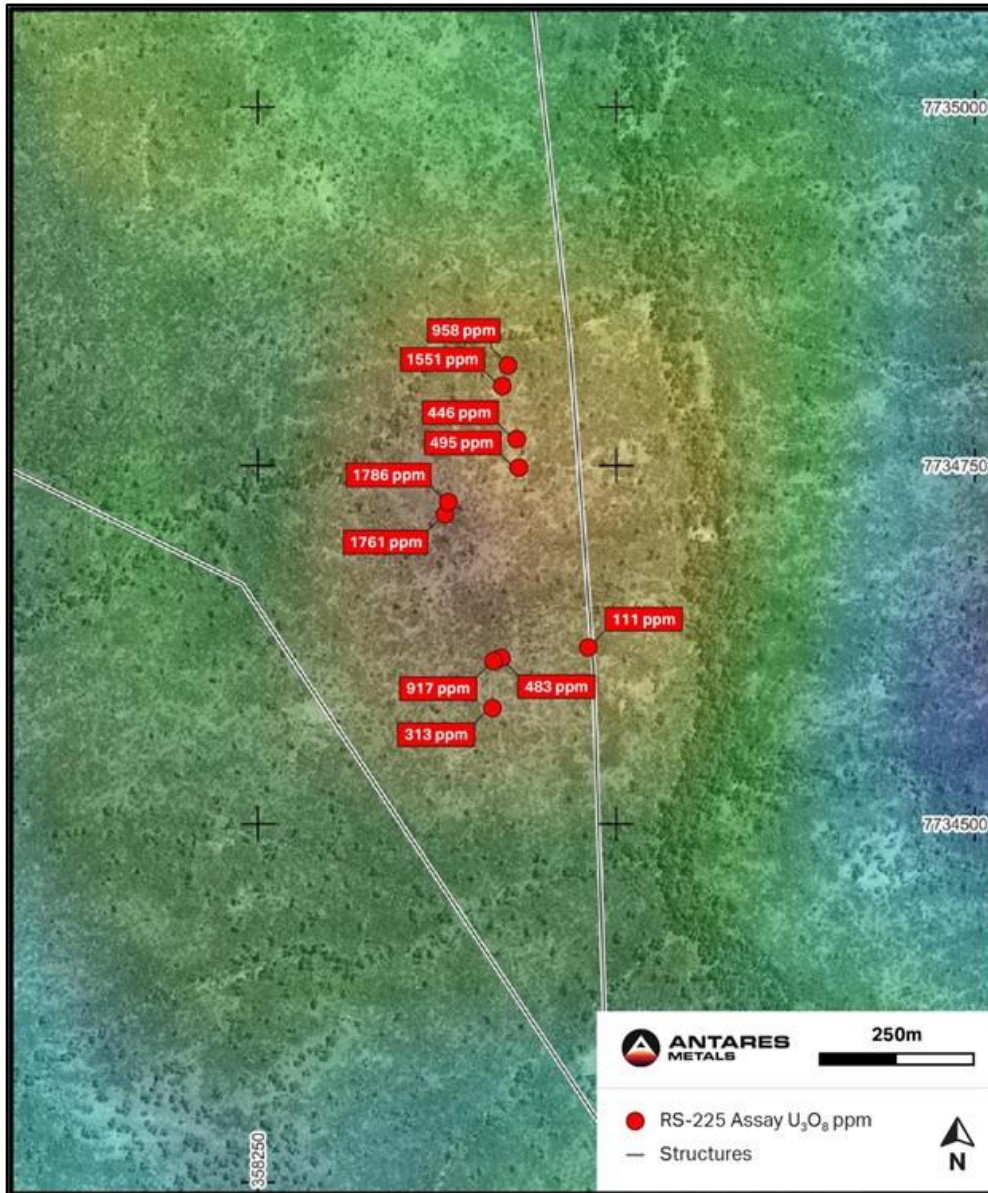


Figure 2. B8A RS-225 assay locations and structures on uranium radiometric and BING Imagery.

Tjilpa Uranium Prospect

Tjilpa is an albitite-hosted uranium prospect located four kilometres southwest of Skal (Paladin Energy). The prospect consists of 2 discrete radiometric anomalies. It was explored by QML in the 1970s and by Summit Resources in 2006, which drilled five holes beneath the prospect. Hand-drawn cross sections indicate that the drilling was very shallow, testing the outcrops less than 20m below the surface. Significant intercepts of this drilling are tabulated in Table 2 below.

The Tjilpa uranium anomalies are situated in NNE-striking meta-basalts of the Eastern Creek Volcanics. Three zones of albitite-hosted uranium mineralisation occur within the shear zones and near vertical basalt-siltstone contacts.

The Antares geological team traversed the anomaly, collecting rock chip samples and taking several readings with an RS-225 spectrometer set to 300-second assay mode, which provided instant results representing the uranium, potassium, and thorium values of the sample. The RS-225 spectrometer assay results surveyed at Tjilpa are listed in

Table 3 below. The RS-225 spectrometer enabled Antares geologists to track the mineralisation for over 100m at the northern anomaly, returning high uranium assays (RS-225) up to 977ppm U₃O₈ (828ppm U).

Table 2. Tjilpa 2006 DDH drilling significant intercepts.

Hole ID	From (m)	To (m)	Interval (m)	U3O8 (ppm)
TJDDH01	6	7	1	1004
TJDDH01	11	17	6	783
TJDDH01	36	41	5	353
TJDDH01	57	61	4	565
TJDDH01	66	68	2	729
TJDDH01	120	128	8	679
TJDDH01	166	182	16	647
TJDDH03	28	31	3	742
TJDDH05	149	150	1	644

Table 3. Tjilpa prospect RS-225 assay data

Sample ID	U (ppm)	U ₃ O ₈	K (%)	Th (ppm)
ASS61	657	775	6	25
ASS62	623	735	5	26
ASS65	828	977	7	26
ASS66	762	898	6	30
ASS67	371	438	4	57

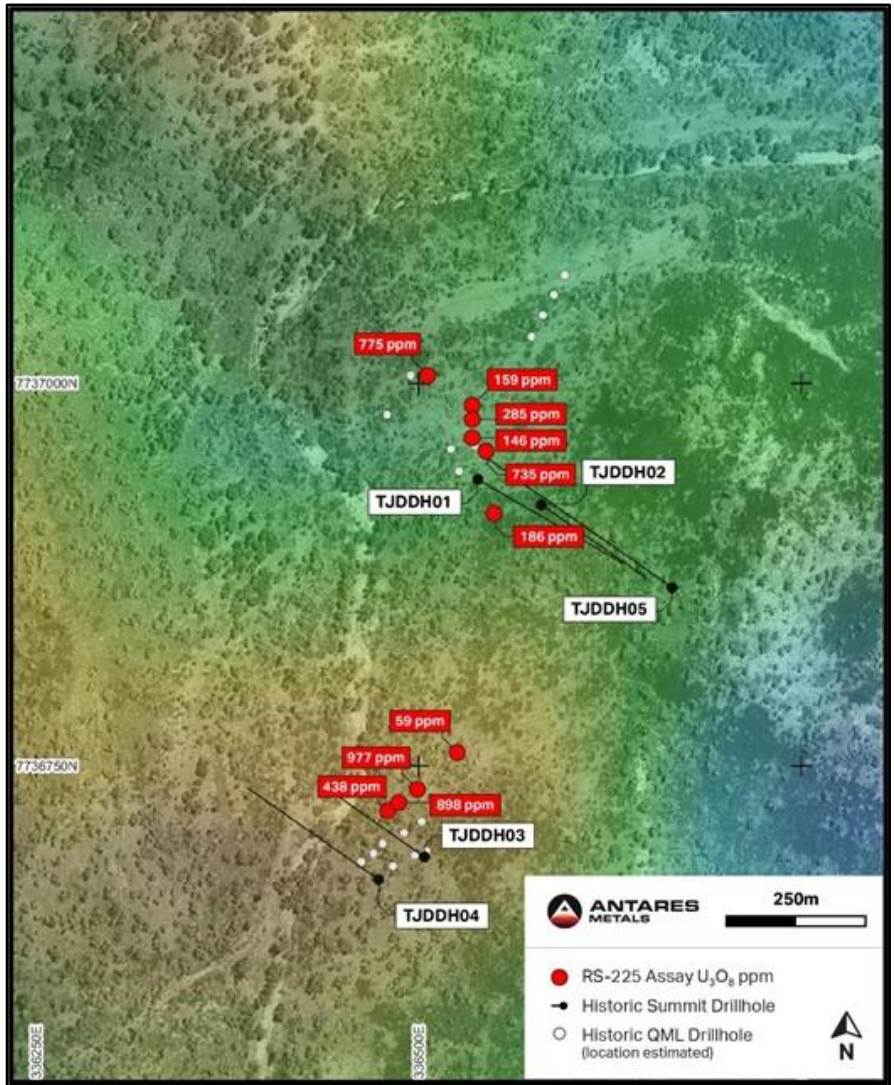


Figure 3. Tjilpa RS-225 assay locations and drilling on uranium radiometrics and BING Imagery.

Montebello Uranium Prospect

The Montebello Uranium prospect is located six kilometres south-west of Paladin Energy’s Skäl Uranium deposit. The anomaly is a discrete radiometric high hosted in the Cromwell meta-basalt member of the Eastern Creek Volcanics. The basalts and interbedded sandstones strike northeast, with high-grade uranium mineralisation identified in steeply southeast-dipping albitite zones, tracked by AM5 geologists. AM5 collected several samples with U₃O₈ results above 1,400 ppm U₃O₈ in the field.

Summit Resources (Summit) drilled three holes at Monte Bello in 2009, and there appear to be no assays from these holes sent for laboratory analysis. The company (Summit) used downhole gamma logging at the time. It is difficult to understand why surface results with such anomalous uranium values did not result in mineralised intersections at shallow depths. Therefore, a structural and geological review of the anomaly is underway.

Table 4. Montebello prospect RS-225 assay data

Sample ID	U (ppm)	U ₃ O ₈	K (%)	Th (ppm)
ASS70	381	450	4	134
ASS71	266	314	2	21
ASS75	1381	1628	13	92
ASS76	1686	1988	16	108

ASS77	1187	1400	12	84
-------	------	------	----	----

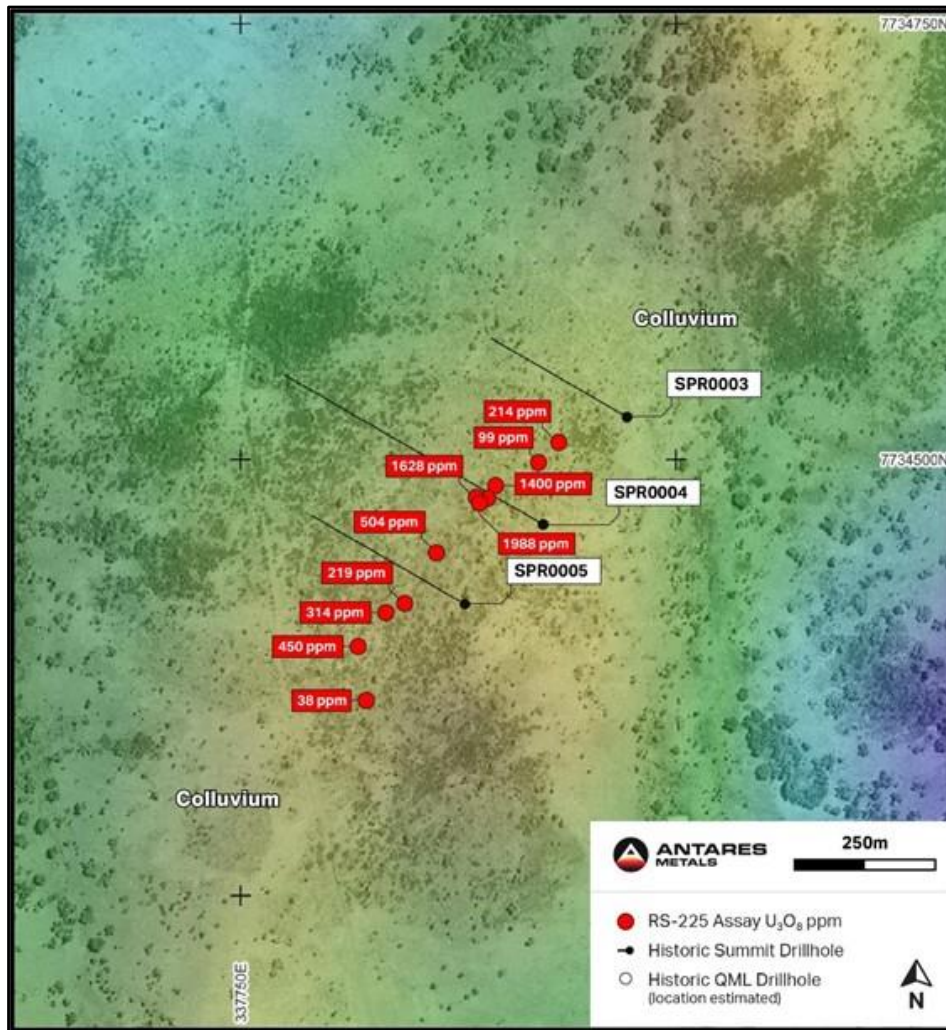


Figure 4: Montebello RS-225 assay locations and drilling on uranium radiometrics and BING Imagery.

Characteristics of uranium mineralisation in the Mount Isa region

The Mt Isa region has a strong history of uranium exploration, with several significant discoveries including the Valhalla uranium deposit owned by Paladin Energy. Uranium exploration in the Mt Isa inlier has identified several characteristics of the predominant style of uranium mineralisation in the area. These include

- A strong structural control of the mineralisation is expressed as brecciation and foliation, with mineral occurrences generally located on second-order structures positioned adjacent to major faults.
- Pervasive sodium metasomatism expressed in outcrop as red albite with finely disseminated hematite producing red rock 'albitites'.
- Proximal intense chlorite haloes to the albite alteration.
- Geochemical signatures include enrichment of U, Na, Ca, Sr, Zr, Th, Hf and P.
- There is a strong correlation between uranium occurrences and the Cromwell meta-basalt member of the Eastern Creek Volcanics, although there are uranium occurrences outside this geological unit.

Antares exploration methodology considers the above characteristics and evolves with additional observations to ensure thorough investigation of any identified target.

Future activities

The ground truthing and reconnaissance of the target-rich and extensive ground holding of the Mt Isa North Copper and Uranium Project continues to identify highly encouraging prospects to add to Antares exploration pipeline.

Antares will continue to develop the targets at B8A, Monte Bello, and Tjilpa, in concert with those previously reported, with the intention of drill testing these most prospective targets in the near future.

The Company also has several copper-focused drill targets and high-priority prospects, including Conglomerate Creek and Surprise, with future activities being scheduled.

-ENDS-

This announcement has been approved for release by the Board of Antares Metals Limited.

Enquiries:

Johan Lambrechts
Chief Executive Officer
Antares Metals Limited
E: johan@antaresmetals.com.au

Competent Person Statement:

The information in this report that relates to Exploration activities and Exploration Results has been approved by Mr. Matthew Porter, a Competent Person who is a member of The Australasian Institute of Geoscientists and is the Exploration Manager of Antares Metals Limited.

Mr Porter has sufficient experience that is relevant to the style of mineralisation and type of deposit under consideration and to the activity being undertaken to qualify as a Competent Person as defined in the 2012 Edition of the 'Australasian Code for Reporting of Exploration Results, Mineral Resources and Ore Reserves'. Mr Porter consents to the inclusion in the report of the matters based on his information in the form and context in which it appears.

Information regarding previous exploration is extracted from the report, 'Uranium Prospectivity Review' released on 4 February 2025. This report is available to view on www.antaresmetals.com.au or on the ASX website www.asx.com.au under ticker code AM5. The company confirms that it is not aware of any new information or data that materially affects the information included in the original market announcement and, in the case of estimates of Mineral Resources or Ore Reserves, that all material assumptions and technical parameters underpinning the estimates in the relevant market announcements continue to apply and have not materially changed. The company confirms that the form and context in which the Competent Person's

findings are presented have not been materially modified from the original market announcements.

For personal use only

About Antares Metals

Antares Metals is a multi-commodity, Australian-focused explorer with two district-scale exploration hubs. The company employs modern exploration methods and models to deliver cost-effective programs focused on discovery.

Mt Isa North Cu-U Project (Queensland)

- ▶ **Tenure:** 2,003 km² of prime land near Glencore's Mt Isa Operations
- ▶ **Target Commodities:** Cu (Copper), Zn (Zinc), Ag (Silver), Pb (Lead), U₃O₈ (Uranium), and REE (Rare Earth Elements)
- ▶ **Exploration:** Area has limited historical exploration
- ▶ **Methodology:** Will apply modern exploration models and techniques



ASX:AM5
antaresmetals.com.au

Appendix 1 - JORC Code, 2012 Edition – Table 1

Section 1 Sampling Techniques and Data

(Criteria in this section apply to all succeeding sections.)

Criteria	JORC Code Explanation	Commentary
Sampling techniques	<p>Nature and quality of sampling (e.g., cut channels, random chips, or specific specialised industry standard measurement tools appropriate to the minerals under investigation, such as down hole gamma sondes, or handheld XRF instruments, etc.). These examples should not be taken as limiting the broad meaning of sampling. Include reference to measures taken to ensure sample representivity and the appropriate calibration of any measurement tools or systems used. Aspects of the determination of mineralisation that are Material to the Public Report.</p>	<p>Spectrometer outcrop assay</p> <ul style="list-style-type: none"> This announcement refers to new sample data collected via a GeoResults Pty Ltd RS-225 Gen 2 NaI Spectrometer. The RS-225 spectrometer was set to a 300s assay time and sample was taken on top of outcrop. <p>Tjilpa DDH Drilling Data</p> <ul style="list-style-type: none"> A UDR650 and a RDD700 multipurpose drill rig were utilised to complete the drilling programs. Most of the holes also used an RC precollar. The diamond core was transported to Summit's Mount Isa yard where it is logged. Selected core intervals are quarter-cut, and one quarter was dispatched to the sample preparation facility. All core was photographed. All core holes were generally sampled at 1m intervals The drill hole samples were dispatched to either Northern Territory Environmental Laboratories ("NTEL") in Darwin, Ultra Trace in Perth or ALS Laboratories in Townsville.
Drilling techniques	<p>Drill type (e.g., core, reverse circulation, open-hole hammer, rotary air blast, auger, Bangka, sonic, etc.) And details (e.g., core diameter, triple or standard tube, depth of diamond tails, face-sampling bit or other type, whether core is oriented and if so, by what method, etc.).</p>	<ul style="list-style-type: none"> This announcement does not refer to new drilling data. It references historical data available from Company Annual Reports available through the QLD Open Data Portal. <p>Tjilpa DDH Drilling Data</p> <ul style="list-style-type: none"> A UDR650 and a RDD700 multipurpose drill rig were utilised to complete the drilling programs. Most of the holes also used an RC precollar. Drill hole collars were located using a hand-held GPS prior to drilling and recorded by DGPS by surveyors at completion. Drill hole azimuths are recorded as magnetic values. Downhole surveys were captured every 50m using a Ranger Single Shot Camera.
Drill sample recovery	<p>Method of recording and assessing core and chip sample recoveries and results assessed. Measures taken to maximise sample recovery and ensure representative nature of the samples. Whether a relationship exists between sample recovery and grade and whether sample bias may have occurred due to preferential loss/gain of fine/coarse material.</p>	<ul style="list-style-type: none"> This announcement does not refer to new drilling data. It references historical data available from Company Annual Reports available through the QLD Open Data Portal. <p>Tjilpa DDH Drilling Data</p> <ul style="list-style-type: none"> NQ core recoveries were generally high with small zones of coreloss within highly fractured intervals in the Eastern Creek Volcanics <p>Spectrometer outcrop assay</p> <ul style="list-style-type: none"> Samples are analysed in situ.

Criteria	JORC Code Explanation	Commentary
Logging	<p>Whether core and chip samples have been geologically and geotechnically logged to a level of detail to support appropriate Mineral Resource estimation, mining studies and metallurgical studies.</p> <p>Whether logging is qualitative or quantitative in nature. Core (or costean, channel, etc.) Photography.</p> <p>The total length and percentage of the relevant intersections logged.</p>	<p>Tjilpa DDH Drilling Data</p> <ul style="list-style-type: none"> Geological logging was originally completed by Summit, and according to reports was later relogged by Paladin personnel uysing applicable logging systems. <p>Spectrometer outcrop assay</p> <ul style="list-style-type: none"> Sample locations were recorded, and geological observations were made and recorded.
Sub-sampling techniques and sample preparation	<p>If core, whether cut or sawn and whether quarter, half or all core taken.</p> <p>If non-core, whether riffled, tube sampled, rotary split, etc. And whether sampled wet or dry.</p> <p>For all sample types, the nature, quality and appropriateness of the sample preparation technique.</p> <p>Quality control procedures adopted for all sub-sampling stages to maximise representivity of samples.</p> <p>Measures taken to ensure that the sampling is representative of the in-situ material collected, including for instance results for field duplicate/second-half sampling.</p> <p>Whether sample sizes are appropriate to the grain size of the material being sampled.</p>	<p>Tjilpa DDH Drilling Data</p> <ul style="list-style-type: none"> The diamond core was transported to Summit's Mount Isa yard where it is logged. Selected core intervals are quarter cut and one quarter despatched to the sample preparation facility. All core was photographed. All core holes are generally sampled at 1m intervals Summit includes blank material in each batch of samples submitted to the various assay labs. The blanks are included at a ratio of approximately 1:10 with the samples. Summit submits a suite of standards with each batch of samples dispatched to the assay labs
Quality of assay data and laboratory tests	<p>The nature, quality and appropriateness of the assaying and laboratory procedures used and whether the technique is considered partial or total.</p> <p>For geophysical tools, spectrometers, handheld XRF instruments, etc., the parameters used in determining the analysis including instrument make and model, reading times, calibrations factors applied and their derivation, etc.</p> <p>Nature of quality control procedures adopted (e.g., standards, blanks, duplicates, external laboratory checks) and whether acceptable levels of accuracy (i.e., lack of bias) and precision have been established.</p>	<p>Spectrometer Details</p> <ul style="list-style-type: none"> GeoResults Pty LTd RS-225 Gen 2 Nal Spectrometer. Assay time 300s. No calibration factors applied. <p>Historical drilling data</p> <ul style="list-style-type: none"> This announcement does not refer to new drilling data. It references historical data available from Company Annual Reports available through the QLD Open Data Portal.
Verification of sampling and assaying	<p>The verification of significant intersections by either independent or alternative company personnel.</p> <p>The use of twinned holes.</p> <p>Documentation of primary data, data entry procedures, data verification, data storage (physical and electronic) protocols.</p> <p>Discuss any adjustment to assay data.</p>	<ul style="list-style-type: none"> No verification outside the Company was completed This announcement does not include new sampling or sample verification The results in this release have not been subject to additional sample verification beyond those mentioned above. <p>Tjilpa DDH Drilling Data</p> <ul style="list-style-type: none"> At this stage of the drilling program verification was not considered to be necessary. Future drilling programs will include some twin holes where appropriate

Criteria	JORC Code Explanation	Commentary
Location of data points	Accuracy and quality of surveys used to locate drill holes (collar and down-hole surveys), trenches, mine workings and other locations used in Mineral Resource estimation. Specification of the grid system used. Quality and adequacy of topographic control.	Spectrometer outcrop assay <ul style="list-style-type: none"> The RS-225 has an in built GPS Tjilpa DDH Drilling Data <ul style="list-style-type: none"> Drill holes collars were located using a hand-held GPS prior to drilling and recorded by DGPS by surveyors at completion. Monte Bello RC Data <ul style="list-style-type: none"> Drill holes collars were located using a hand-held GPS prior to drilling
Data spacing and distribution	Data spacing for reporting of Exploration Results. Whether the data spacing, and distribution is sufficient to establish the degree of geological and grade continuity appropriate for the Mineral Resource and Ore Reserve estimation procedure(s) and classifications applied. Whether sample compositing has been applied.	Spectrometer outcrop assay <ul style="list-style-type: none"> Samples were collected at random. No Mineral Resource or Ore Reserve estimations are being reported. Tjilpa DDH Drilling Data <ul style="list-style-type: none"> Drilling was preliminary and spacing adequate for the stage of the program. Monte Bello RC Data <ul style="list-style-type: none"> Drilling was preliminary and spacing adequate for the stage of the program.
Orientation of data in relation to geological structure	Whether the orientation of sampling achieves unbiased sampling of possible structures and the extent to which this is known, considering the deposit type. If the relationship between the drilling orientation and the orientation of key mineralised structures is considered to have introduced a sampling bias, this should be assessed and reported if material.	Spectrometer outcrop assay <ul style="list-style-type: none"> Samples were collected at random from outcrops encountered in the field. Drilling Data <ul style="list-style-type: none"> All holes were drilled perpendicular to the interpreted trending mineralised zone
Sample security	The measures taken to ensure sample security.	Spectrometer outcrop assay <ul style="list-style-type: none"> Samples were analysed in situ with results immediately recorded in the device.
Audits or reviews	The results of any audits or reviews of sampling techniques and data.	<ul style="list-style-type: none"> No audits have been conducted on the data.

Section 2 Reporting of Exploration Results

(Criteria listed in the preceding section also apply to this section.)

Criteria	JORC Code Explanation	Commentary
Mineral tenement and land tenure status	Type, reference name/number, location and ownership including agreements or material issues with third parties such as joint ventures, partnerships, overriding royalties, native title interests, historical sites, wilderness or national park and environmental settings. The security of the tenure held at the time of reporting along with any known impediments to obtaining a licence to operate in the area.	<ul style="list-style-type: none"> The review discussed in this announcement pertains to EPM26987, EPM27439, EPM27570, EPM27947, EPM28297, EPM28620, EPM28791, EPM28792 and EPM28793, held by Sons of Mt Isa Pty Ltd, Frankland Resources Pty Ltd and Antares Metals Limited, which are located less than 100km north of Mount Isa in QLD. There are no material encumbrances such as royalties or other agreements.

Criteria	JORC Code Explanation	Commentary
Exploration done by other parties	Acknowledgment and appraisal of exploration by other parties.	<ul style="list-style-type: none"> The announcement relates to the review of currently available open file historical exploration and other datasets, such as government geophysical maps. A detailed review of specific historical exploration activities is underway, but has not been completed for the entirety of the project area. RC drilling data sourced from annual reports from the GSQ Open data portal: CR0117772 and CR064099.
Geology	Deposit type, geological setting and style of mineralisation.	<ul style="list-style-type: none"> Uranium deposits within the project are albitite-type, generally comprised of variably altered Cromwell Metabasalt with interbedded sediments including some quartzite. The basalt ranges from unaltered to intensely fractured and brecciated with intense hematite-albite and silica alteration, with carbonate-magnetite alteration also common. A general NNE-SSW shear trend is observed in outcrop, and mineralisation dips variably between steeply east and steeply west. Uranium minerals are predominantly brannerite, uraninite and coffinite.
Drill hole Information	<p>A summary of all information material to the understanding of the exploration results including a tabulation of the following information for all Material drill holes:</p> <p>easting and northing of the drill hole collar elevation or RL (Reduced Level – elevation above sea level in metres) of the drill hole collar dip and azimuth of the hole down hole length and interception depth hole length.</p> <p>If the exclusion of this information is justified on the basis that the information is not Material and this exclusion does not detract from the understanding of the report, the Competent Person should clearly explain why this is the case.</p>	<ul style="list-style-type: none"> This announcement does not include new drilling data by Antares. All drilling data released in this announcement has been sourced from open file Annual reports. Pertinent drill hole data referenced in this report can be found in the appendices. RC drilling data sourced from annual reports from the GSQ Open data portal: CR0117772 and CR064099. All drillhole data is considered validated by a competent person and accurate.
Data aggregation methods	<p>In reporting Exploration Results, weighting averaging techniques, maximum and/or minimum grade truncations (e.g., cutting of high grades) and cut-off grades are usually Material and should be stated.</p> <p>Where aggregate intercepts incorporate short lengths of high-grade results and longer lengths of low-grade results, the procedure used for such aggregation should be stated and some typical examples of such aggregations should be shown in detail. The assumptions used for any reporting of metal equivalent values should be clearly stated.</p>	<ul style="list-style-type: none"> No grade aggregation, weighting, or cut-off methods were used for this announcement

Criteria	JORC Code Explanation	Commentary
Relationship between mineralisation widths and intercept lengths	These relationships are particularly important in the reporting of Exploration Results. If the geometry of the mineralisation with respect to the drill hole angle is known, its nature should be reported. If it is not known and only the down hole lengths are reported, there should be a clear statement to this effect (e.g., 'down hole length, true width not known').	<ul style="list-style-type: none"> Downhole length of intercept reported only from historical annual reports. The drilling completed represents initial or early-stage programs, and exact geometries are not known yet.
Diagrams	Appropriate maps and sections (with scales) and tabulations of intercepts should be included for any significant discovery being reported. These should include, but not be limited to a plan view of drill hole collar locations and appropriate sectional views.	<ul style="list-style-type: none"> Images/maps are included in the body of the announcement.
Balanced reporting	Where comprehensive reporting of all Exploration Results is not practicable, representative reporting of both low and high grades and/or widths should be practiced to avoid misleading reporting of Exploration Results.	<ul style="list-style-type: none"> The results in this report are a complete and balanced set, with all available data included in the appendices. RS-225 Spectrometer results are reported from the locations sampled.
Other substantive exploration data	Other exploration data, if meaningful and material, should be reported including (but not limited to): geological observations; geophysical survey results; geochemical survey results; bulk samples – size and method of treatment; metallurgical test results; bulk density, groundwater, geotechnical and rock characteristics; potential deleterious or contaminating substances.	<ul style="list-style-type: none"> There is no other substantive exploration data to report.
Further work	The nature and scale of planned further work (e.g., tests for lateral extensions or depth extensions or large-scale step-out drilling). Diagrams clearly highlighting the areas of possible extensions, including the main geological interpretations and future drilling areas, provided this information is not commercially sensitive.	<ul style="list-style-type: none"> Plans for further work are outlined in the body of the announcement.

Appendix 2 – Summit Tjilpa RC Drill Data Collar

Hole ID	East GDA94	North GDA94	RL	Total Depth	Azi Mag	Dip	Drill Type	Source	Company	Year
TJDDH01	336538.693	7736937.183	379.79	231.5	115	-62	DDH	cr117772_9.txt	Summit	2006
TJDDH02	336580.283	7736920.663	380.48	176.5	120	-62	DDH	cr117772_9.txt	Summit	2006
TJDDH03	336503.853	7736690.634	378.86	138.4	300	-60	DDH	cr117772_9.txt	Summit	2006
TJDDH04	336473.853	7736675.784	378.74	207.1	300	-60	DDH	cr117772_9.txt	Summit	2006
TJDDH05	336665.822	7736866.343	386.17	290.9	300	-60	DDH	cr117772_9.txt	Summit	2006

Appendix 3 – Tjilpa RC Drill Assay Data

Hole ID	From (m)	To (m)	U308 (ppm)	Hole ID	From (m)	To (m)	U308 (ppm)
TJDDH01	1	2	64	TJDDH01	149	150	11
TJDDH01	2	3	32	TJDDH01	150	151	15
TJDDH01	3	4	12	TJDDH01	151	152	12
TJDDH01	4	5	5	TJDDH01	152	153	827
TJDDH01	5	6	6	TJDDH01	153	154	11
TJDDH01	6	7	1004	TJDDH01	154	155	23
TJDDH01	7	8	130	TJDDH01	155	156	15
TJDDH01	8	9	6	TJDDH01	156	157	5
TJDDH01	9	10	9	TJDDH01	157	158	6
TJDDH01	10	11	39	TJDDH01	158	159	6
TJDDH01	11	12	177	TJDDH01	159	160	1064
TJDDH01	12	13	1092	TJDDH01	160	161	279
TJDDH01	13	14	2488	TJDDH01	161	162	16
TJDDH01	14	15	216	TJDDH01	162	163	6
TJDDH01	15	16	192	TJDDH01	163	164	2
TJDDH01	16	17	530	TJDDH01	164	165	4
TJDDH01	17	18	11	TJDDH01	165	166	2
TJDDH01	18	19	9	TJDDH01	166	167	110
TJDDH01	19	20	16	TJDDH01	167	168	1250
TJDDH01	20	21	21	TJDDH01	168	169	1639
TJDDH01	21	22	64	TJDDH01	169	170	1083
TJDDH01	22	23	15	TJDDH01	170	171	1462
TJDDH01	23	24	14	TJDDH01	171	172	541
TJDDH01	24	25	3	TJDDH01	172	173	762
TJDDH01	25	26	3	TJDDH01	173	174	1191
TJDDH01	26	27	5	TJDDH01	174	175	252
TJDDH01	27	28	8	TJDDH01	175	176	224
TJDDH01	28	29	14	TJDDH01	176	177	350
TJDDH01	29	30	11	TJDDH01	177	178	14
TJDDH01	30	31	8	TJDDH01	178	179	167
TJDDH01	31	32	11	TJDDH01	179	180	94
TJDDH01	32	33	11	TJDDH01	180	181	736
TJDDH01	33	34	12	TJDDH01	181	182	480
TJDDH01	34	35	32	TJDDH01	182	183	145
TJDDH01	35	36	51	TJDDH01	183	184	48
TJDDH01	36	37	496	TJDDH01	184	185	31
TJDDH01	37	38	239	TJDDH01	185	186	15
TJDDH01	38	39	68	TJDDH01	186	187	86
TJDDH01	39	40	542	TJDDH01	187	188	164
TJDDH01	40	41	420	TJDDH01	188	189	39
TJDDH01	41	42	150	TJDDH01	189	190	320
TJDDH01	42	43	93	TJDDH01	190	191	159
TJDDH01	43	44	8	TJDDH01	191	192	212
TJDDH01	44	45	4	TJDDH01	192	193	255
TJDDH01	45	46	20	TJDDH01	193	194	202
TJDDH01	46	47	8	TJDDH01	194	195	53
TJDDH01	47	48	8	TJDDH01	195	196	429
TJDDH01	48	49	15	TJDDH01	196	197	163
TJDDH01	49	50	12	TJDDH01	197	198	647
TJDDH01	50	51	8	TJDDH01	198	199	1368
TJDDH01	51	52	4	TJDDH01	199	200	1099
TJDDH01	52	53	8	TJDDH01	200	201	110
TJDDH01	53	54	7	TJDDH01	201	202	14
TJDDH01	54	55	8	TJDDH01	202	203	15
TJDDH01	55	56	4	TJDDH01	203	204	18
TJDDH01	56	57	4	TJDDH01	204	205	53
TJDDH01	57	58	298	TJDDH01	205	206	15
TJDDH01	58	59	1226	TJDDH01	206	207	74
TJDDH01	59	60	64	TJDDH01	207	208	29
TJDDH01	60	61	670	TJDDH01	208	209	5
TJDDH01	61	62	78	TJDDH01	209	210	5
TJDDH01	62	63	84	TJDDH01	210	211	5
TJDDH01	63	64	39	TJDDH01	211	212	9
TJDDH01	64	65	47	TJDDH01	212	213	8
TJDDH01	65	66	28	TJDDH01	213	214	19
TJDDH01	66	67	838	TJDDH01	214	215	23

Hole ID	From (m)	To (m)	U308 (ppm)		Hole ID	From (m)	To (m)	U308 (ppm)
TJDDH01	67	68	620		TJDDH01	215	216	23
TJDDH01	68	69	21		TJDDH01	216	217	16
TJDDH01	69	70	38		TJDDH01	217	218	51
TJDDH01	70	71	19		TJDDH01	218	219	4
TJDDH01	71	72	179		TJDDH01	219	220	38
TJDDH01	72	73	196		TJDDH01	220	221	5
TJDDH01	73	74	77		TJDDH01	221	222	5
TJDDH01	74	75	11		TJDDH01	222	223	6
TJDDH01	75	76	27		TJDDH01	223	224	3
TJDDH01	76	77	114		TJDDH01	224	225	5
TJDDH01	77	78	41		TJDDH01	225	226	6
TJDDH01	78	79	7		TJDDH01	226	227	9
TJDDH01	79	80	9		TJDDH01	227	228	80
TJDDH01	80	81	9		TJDDH01	228	229	56
TJDDH01	81	82	8		TJDDH01	229	230	8
TJDDH01	82	83	11		TJDDH01	230	232	5
TJDDH01	83	84	9		TJDDH03	23	24	15
TJDDH01	84	85	17		TJDDH03	24	25	24
TJDDH01	85	86	22		TJDDH03	25	26	15
TJDDH01	86	87	94		TJDDH03	26	27	21
TJDDH01	87	88	28		TJDDH03	27	28	44
TJDDH01	88	89	50		TJDDH03	28	29	443
TJDDH01	89	90	137		TJDDH03	29	30	331
TJDDH01	90	91	10		TJDDH03	30	31	1450
TJDDH01	91	92	24		TJDDH03	31	32	252
TJDDH01	92	93	6		TJDDH03	32	33	162
TJDDH01	93	94	4		TJDDH03	33	34	125
TJDDH01	94	95	32		TJDDH03	34	35	44
TJDDH01	95	96	12		TJDDH03	35	36	88
TJDDH01	96	97	5		TJDDH03	36	37	37
TJDDH01	97	98	8		TJDDH03	37	38	212
TJDDH01	98	99	96		TJDDH03	38	39	52
TJDDH01	99	100	7		TJDDH03	39	40	50
TJDDH01	100	101	8		TJDDH03	40	41	249
TJDDH01	101	102	4		TJDDH03	41	42	37
TJDDH01	102	103	5		TJDDH03	42	43	25
TJDDH01	103	104	12		TJDDH03	43	44	26
TJDDH01	104	105	14		TJDDH03	44	45	13
TJDDH01	105	106	93		TJDDH03	45	46	21
TJDDH01	106	107	28		TJDDH03	46	47	36
TJDDH01	107	108	50		TJDDH03	47	48	7
TJDDH01	108	109	9		TJDDH03	84	85	20
TJDDH01	109	110	31		TJDDH03	85	86	25
TJDDH01	110	111	26		TJDDH03	86	87	17
TJDDH01	111	112	152		TJDDH03	87	88	13
TJDDH01	112	113	489		TJDDH03	88	89	8
TJDDH01	113	114	137		TJDDH03	89	90	11
TJDDH01	114	115	59		TJDDH03	90	91	9
TJDDH01	115	116	313		TJDDH03	91	92	6
TJDDH01	116	117	96		TJDDH03	92	93	8
TJDDH01	117	118	96		TJDDH03	93	94	19
TJDDH01	118	119	12		TJDDH03	94	95	10
TJDDH01	119	120	8		TJDDH03	95	96	4
TJDDH01	120	121	279		TJDDH03	96	97	4
TJDDH01	121	122	320		TJDDH04	46	47	74
TJDDH01	122	123	1616		TJDDH04	47	48	307
TJDDH01	123	124	1356		TJDDH04	48	49	140
TJDDH01	124	125	940		TJDDH04	49	50	177
TJDDH01	125	126	329		TJDDH04	50	51	166
TJDDH01	126	127	481		TJDDH04	51	52	95
TJDDH01	127	128	112		TJDDH05	144	145	2
TJDDH01	128	129	75		TJDDH05	145	146	5
TJDDH01	129	130	8		TJDDH05	146	147	27
TJDDH01	130	131	14		TJDDH05	147	148	8
TJDDH01	131	132	53		TJDDH05	148	149	163
TJDDH01	132	133	11		TJDDH05	149	150	644

Hole ID	From (m)	To (m)	U308 (ppm)		Hole ID	From (m)	To (m)	U308 (ppm)
TJDDH01	133	134	68		TJDDH05	150	151	26
TJDDH01	134	135	37		TJDDH05	151	152	27
TJDDH01	135	136	6		TJDDH05	152	153	17
TJDDH01	136	137	400		TJDDH05	153	154	29
TJDDH01	137	138	216		TJDDH05	154	155	304
TJDDH01	138	139	42		TJDDH05	155	156	19
TJDDH01	139	140	914		TJDDH05	156	157	375
TJDDH01	140	141	219		TJDDH05	157	158	36
TJDDH01	141	142	131		TJDDH05	158	159	8
TJDDH01	142	143	190		TJDDH05	159	160	8
TJDDH01	143	144	145		TJDDH05	218	219	2
TJDDH01	144	145	23		TJDDH05	219	220	2
TJDDH01	145	146	205		TJDDH05	220	221	80
TJDDH01	146	147	1131		TJDDH05	221	222	127
TJDDH01	147	148	9		TJDDH05	222	223	5
TJDDH01	148	149	9		TJDDH05	223	224	4

Appendix 4 – AM5 Spectrometer Data

Prospect	Sample ID	East GDA94	North GDA94	U (ppm)	U ₃ O ₈	K [%]	Th [ppm]
B8A	ASS95	358482	7734623	94	111	2	58
B8A	ASS96	358414	7734581	266	313	3	148
B8A	ASS97	358415	7734614	777	917	9	370
B8A	ASS98	358418	7734615	409	483	6	260
B8A	ASS99	358381	7734718	1494	1761	12	403
B8A	ASS100	358383	7734725	1514	1786	14	521
B8A	ASS101	358432	7734748	420	495	4	55
B8A	ASS102	358430	7734768	378	446	4	42
B8A	ASS103	358421	7734805	1316	1551	10	131
B8A	ASS104	358423	7734819	836	985	8	53
Tjilpa	ASS58	336535	7736965	124	146	1	19
Tjilpa	ASS59	336535	7736977	242	285	3	51
Tjilpa	ASS60	336536	7736985	135	159	2	14
Tjilpa	ASS61	336506	7737003	657	775	6	25
Tjilpa	ASS62	336542	7736957	623	735	5	26
Tjilpa	ASS63	336549	7736915	158	186	1	11
Tjilpa	ASS64	336525	7736758	50	59	4	19
Tjilpa	ASS65	336500	7736735	828	977	7	26
Tjilpa	ASS66	336486	7736727	762	898	6	30
Tjilpa	ASS67	336480	7736721	371	438	4	57
Montebella	ASS69	337822	7734362	32	38	3	8
Montebella	ASS70	337817	7734392	381	450	4	134
Montebella	ASS71	337835	7734413	266	314	2	21
Montebella	ASS72	337843	7734416	186	219	4	170
Montebella	ASS74	337885	7734479	196	231	2	11
Montebella	ASS75	337888	7734476	1381	1628	13	92
Montebella	ASS76	337890	7734477	1686	1988	16	108
Montebella	ASS77	337896	7734485	1187	1400	12	84
Montebella	ASS78	337922	7734498	84	99	2	17
Montebella	ASS79	337932	7734509	182	214	3	22