

30 September 2025

ASX ANNOUNCEMENT

Bousquet Drilling Demonstrates Down Dip Potential at Paquin

Highlights

- The current drilling program at the Bousquet Project is complete, with 32 diamond holes drilled for a total of 7,083 metres
- The Olympio geology team will process the outstanding core and model the results to plan the next phase of drilling
- Fifteen diamond drill holes remain to be logged and sampled for the Paquin, Paquin South, Decoeur East and CB1 prospects, with results to be announced as they become available
- Assays received for a further 4 holes at the Paquin Prospect included high-grade gold intersections such as:
 - 4.9m @ 2.16 g/t Au (BO-25-41)
 - 2.6m @ 3.13 g/t Au (BO-25-43)
 - 1.0m @ 6.33 g/t Au (BO-25-44)
- These continue to build on the previously reported results from holes BO-25-27 and BO-25-28:
 - 5.4m @ 7.60 g/t Au, including 2.9m @ 10.27 g/t Au (BO-25-27)
 - 7.9m @ 6.20 g/t Au and 1.5m @ 54.20 g/t Au (BO-25-28)
- The Paquin Prospect is part of the Bousquet Project located on the Cadillac Break in Quebec, Canada, a regional structure associated with world-class gold mineralisation (>110 Moz Au¹)
- Situated within 15km of multi-million ounce working gold mines (Agnico Eagle's La Ronde - 15.8Moz Au² and IAMGOLD's Westwood - 2.4Moz Au³)

Olympio's Managing Director, Sean Delaney, commented:

"Olympio's first drilling program at Bousquet was significantly expanded from our originally planned 2,500m to over 7,000m in order to test a number of exciting targets in an area of more than 3km strike along the Cadillac Break. These results give us confidence that Paquin will continue to grow as we explore the down dip potential, and we have assay results for another 15 holes still to come."

“Our maiden drilling program concentrated on the known mineralised areas south of the Cadillac Break. There remains a significant unexplored area to the north, and we are working on generating some exciting targets in that area to be included in the next phase of drilling. We are continuing to grow the Bousquet Gold Project and believe it has significant potential upside to come.”

Olympio Metals Limited (ASX:OLY) (Olympio or the Company) is pleased to announce the Bousquet drilling program is now complete with a total of 32 holes for 7,083m drilled (Table 2). Fifteen holes remain to be processed and results are expected to be received over the coming months.

Results from holes BO-25-41, BO-25-42, BO-25-43 and BO-25-44 have been received, with significant intercepts such as **4.9m @ 2.16 g/t Au from 182m (BO-25-41), 2.6m @ 3.13 g/t Au from 190m (BO-25-43) and 1.0m @ 6.33 g/t Au from 219m (BO-25-44)** (Table 1, Figure 1). These drillholes provide critical structural data on mineralised veins which demonstrate significant down dip potential over 200m from BO-25-41 to BO-25-43, and the potential for further gold mineralisation between the Paquin and Paquin Deeps targets (Figure 3).

The Paquin prospect now extends over 360m along strike and is open along strike both to the west towards the Amadee prospect and to the east and down dip towards Paquin Deeps. Previously announced shallow gold mineralisation at the Amadee prospect (see announcement 12th August 2025) has indicated a 1.2km strike extent of Paquin and Amadee combined (Figure 1).

The Company reviewed historical VLF EM (Very Low Frequency Electro Magnetic) data which further supports the potential structural continuity between the Paquin and Amadee prospects (Figure 4). VLF is a passive EM surveying technique that is well suited to detecting linear conductors. A ground-based VLF survey was conducted over the Bousquet Project in 1986⁴. Figure 4 illustrates that VLF detects established structures such as the North Bousquet Fault very effectively.

The structures are inferred to host disseminated sulphides and/or graphitic schists which produce an EM response. The VLF data reveals an extensive, continuous linear feature that is largely coincident with the Paquin and Amadee mineralisation defined to date. The VLF anomaly strongly supports continuity of the structure between Paquin and Amadee over 1.2km, and suggests it continues to the west and east.

Analysis and modelling of results from the completed drilling program at Bousquet will be ongoing through the December quarter. Results from 15 diamond holes across 4 target areas remain outstanding and will be received in the coming months. Analysis of regional datasets is ongoing, with potential new regional targets emerging.

Olympio has the option to acquire an 80% interest in the Bousquet Project in Quebec from Bullion Gold Resources for total payment of C\$1.25M (cash and shares) and an exploration investment of C\$2M. Olympio has made payments of C\$0.30M (cash and shares) to date and completed exploration spend of nearly C\$1.0M. Bullion will retain a 20% undivided interest (net carried interest) in this project.

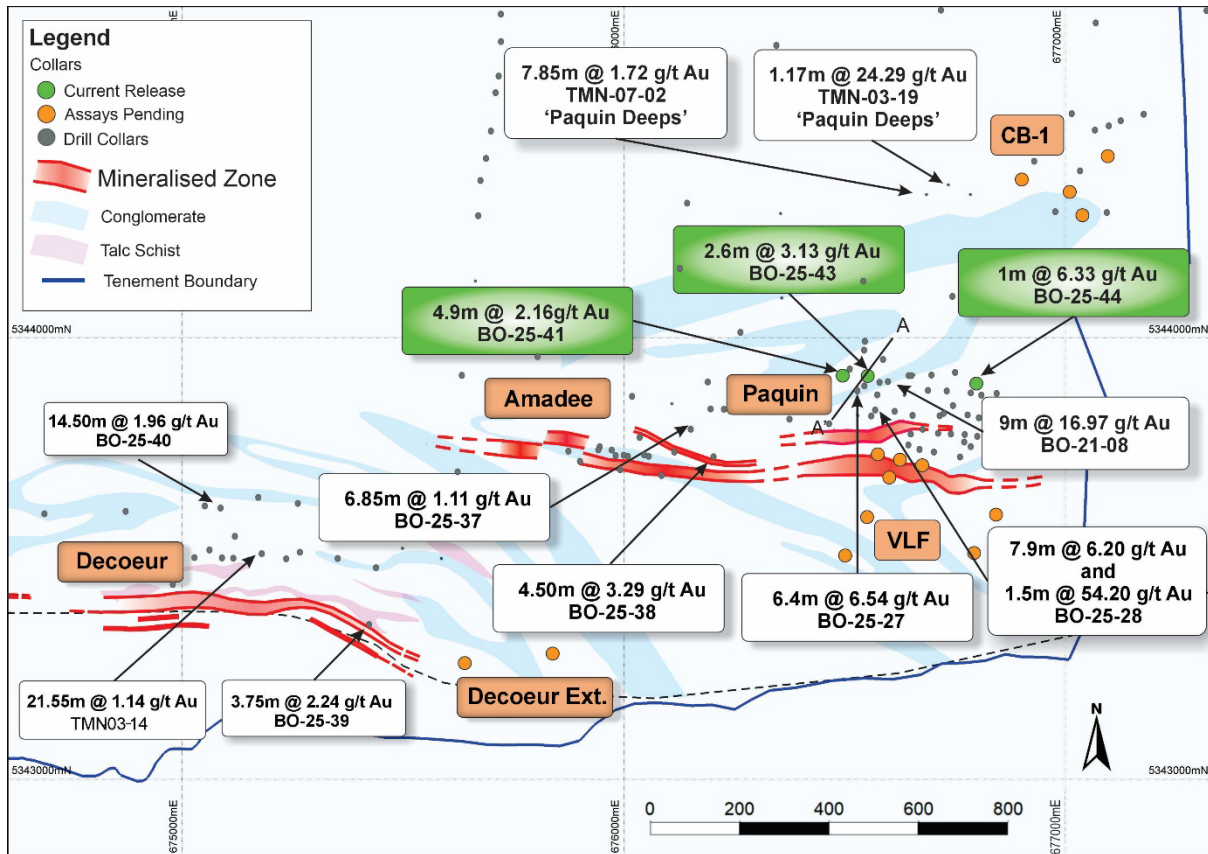


Figure 1: Plan map showing the Paquin Prospect drilling with recent and selected historically significant intersections

Table 1: Downhole significant gold intersections from recent Paquin drilling at 0.5 g/t Au cut-off

Hole ID	From	To	Interval	Au (g/t)
BO-25-41	67	68.2	1.20	0.58
BO-25-41	182.3	187.2	4.90	2.16
BO-25-41	191.7	192.4	0.70	3.00
BO-25-41	204	205.3	1.30	2.25
BO-25-42	87	88	1.00	0.57
BO-25-42	176	176.5	0.50	0.55
BO-25-42	216.5	218	1.50	0.68
BO-25-43	190	192.6	2.60	3.13
BO-25-43	195	196.5	1.50	0.60
BO-25-43	207	208	1.00	0.65
BO-25-43	210	211	1.00	4.43
BO-25-44	99.6	101	1.40	1.42
BO-25-44	219	220	1.00	6.33
BO-25-44	251.1	252	0.90	2.04

Table 2: Drilling collar locations, Bousquet Project. Note that hole BO-23-30 was drilled in 2023

Hole	Prospect	Azimuth	Dip	Length	Easting	Northing	Elevation
BO-25-27	Paquin	188	-55	336	676528	5343882	324
BO-25-28	Paquin	205	-45	252	676568	5343839	322
BO-25-29	Paquin	195	-55	300	676496	5343909	324
BO-25-31	Amadee	220	-45	87	676115	5343741	336
BO-25-32	Amadee	230	-45	102	676092	5343758	334
BO-25-33	Amadee	210	-45	102	676092	5343758	334
BO-25-34	Amadee	210	-45	102	676038	5343774	336
BO-25-35	Amadee	230	-45	102	676038	5343774	336
BO-25-36	Amadee	220	-45	90	676157	5343734	334
BO-25-37	Amadee	220	-45	222	676152	5343793	340
BO-25-38	Amadee	230	-45	102	676202	5343726	324
BO-25-39	Decoeur Ext.	180	-60	207	675423	5343350	308
BO-25-40	Decoeur	220	-55	408	675089	5343598	320
BO-25-41	Paquin	187	-51	225	676496	5343909	324
BO-25-42	Paquin	150	-52	222	676495	5343909	325
BO-25-43	Paquin	210	-45	234	676551	5343907	324
BO-25-44	Paquin	210	-45	252	676796	5343897	323
BO-25-45	Paquin	210	-45	273	676601	5343677	321
BO-25-46	VLF	210	-45	252	676551	5343589	321
BO-25-47	VLF	210	-45	264	676501	5343503	320
BO-25-48	VLF	210	-45	312	676793	5343508	311
BO-25-49	VLF	210	-50	252	676843	5343595	311
BO-25-50	Decoeur Ext.	180	-60	162	675641	5343263	316
BO-25-51	Decoeur Ext.	180	-60	174	675838	5343286	310
BO-25-52	CB-1	153	-45	201	677036	5344273	338
BO-25-53	CB-1	343	-45	252	677036	5344273	338
BO-25-54	CB-1	155	-48	357	677011	5344327	340
BO-25-55	CB-1	156	-45	330	676898	5344358	339
BO-25-56	CB-1	156	-45	300	677092	5344409	339
BO-25-57	Paquin	211	-50	204	676625	5343718	321
BO-25-58	Paquin	210	-50	201	676674	5343705	321
BO-25-59	Paquin	210	-50	204	676575	5343732	324

For personal use only

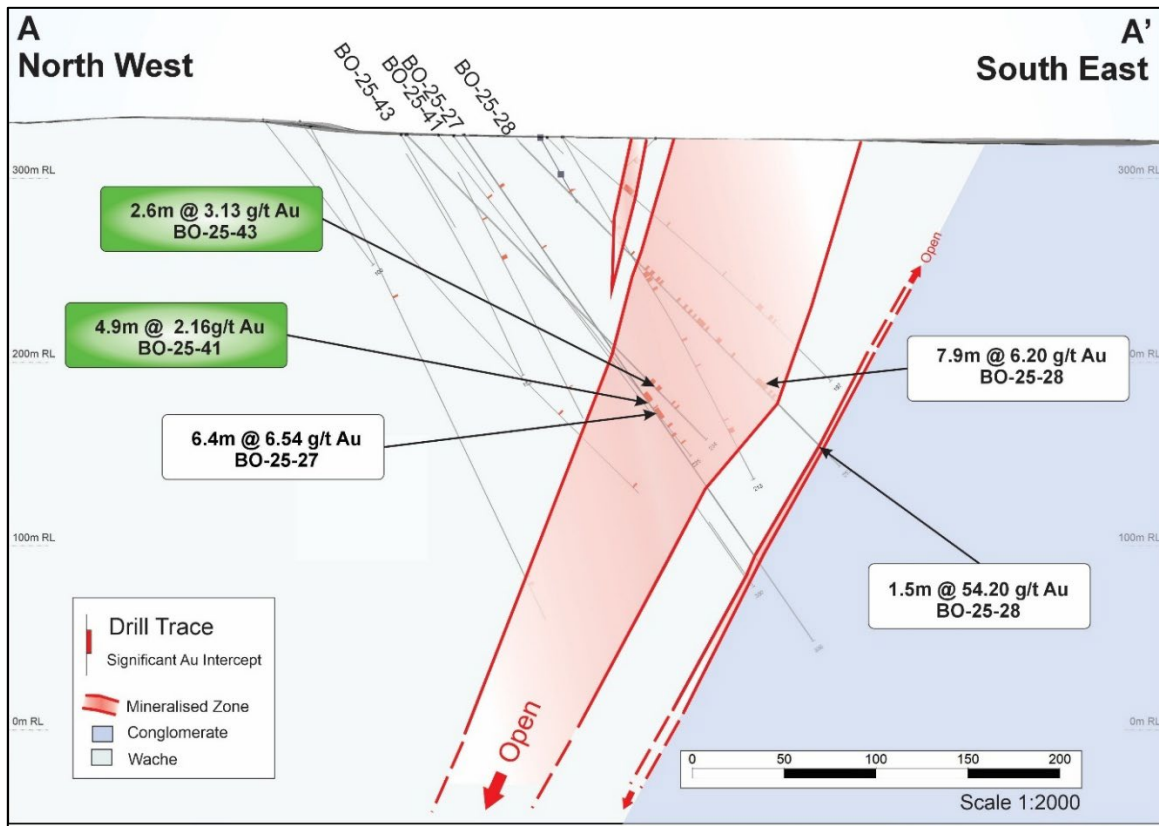


Figure 2: Drilling cross-section A - A' as shown in Figure 1, 80m section window

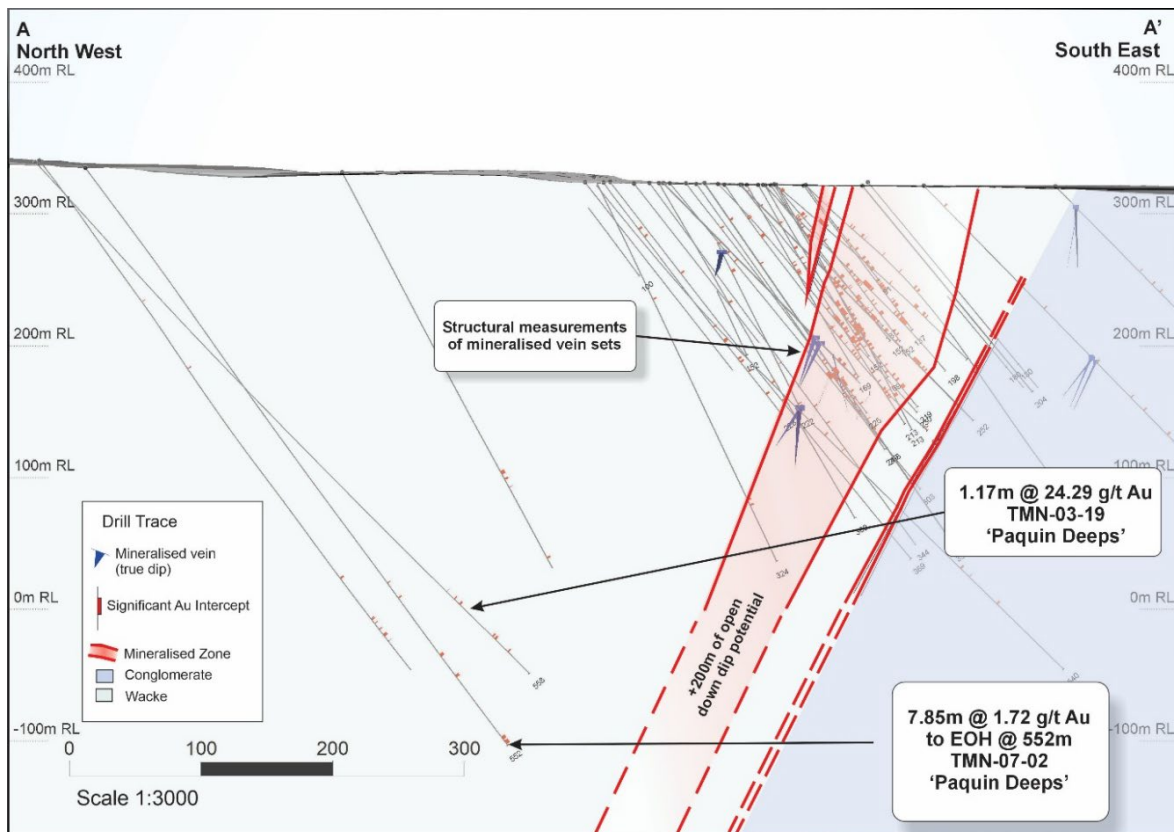


Figure 3: Drilling cross-section A - A' 1:3000 scale 200m section window

For personal use only

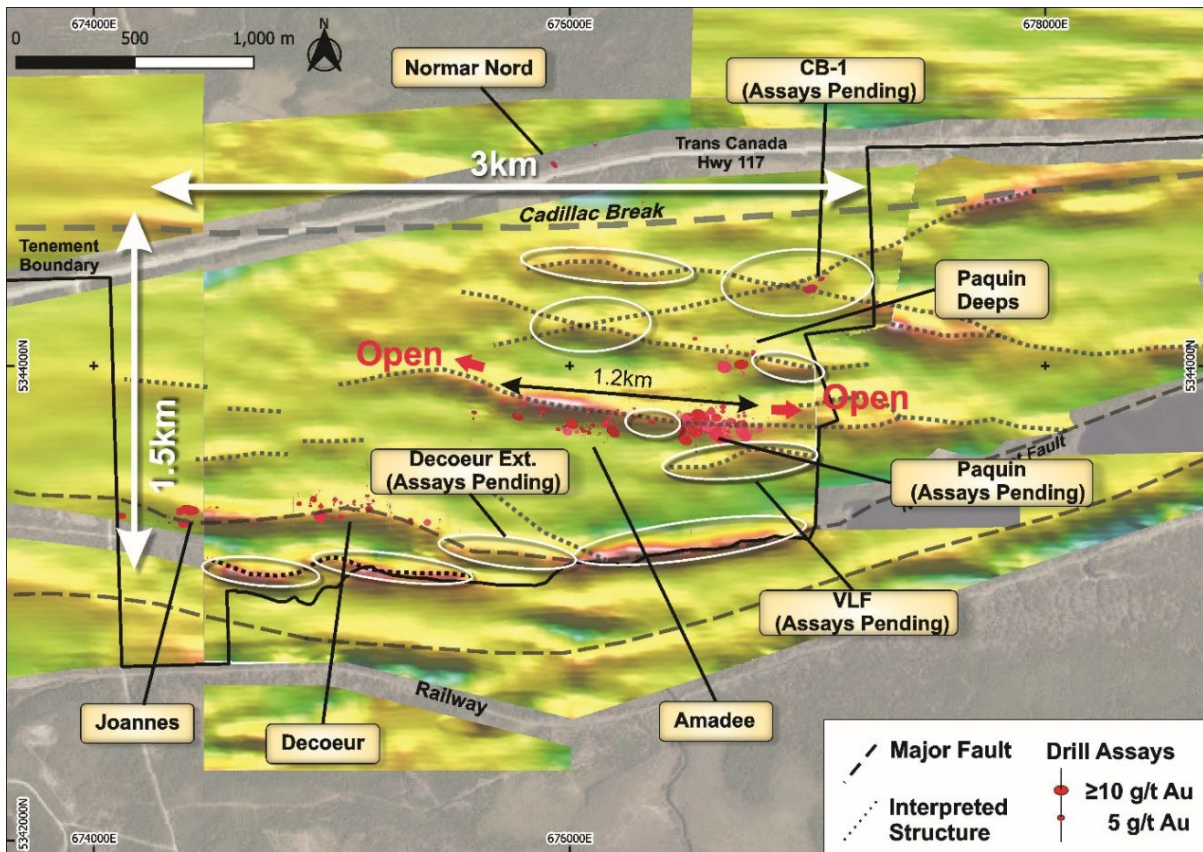


Figure 4: Gold mineralisation in drilling relative to modelled historical VLF EM data

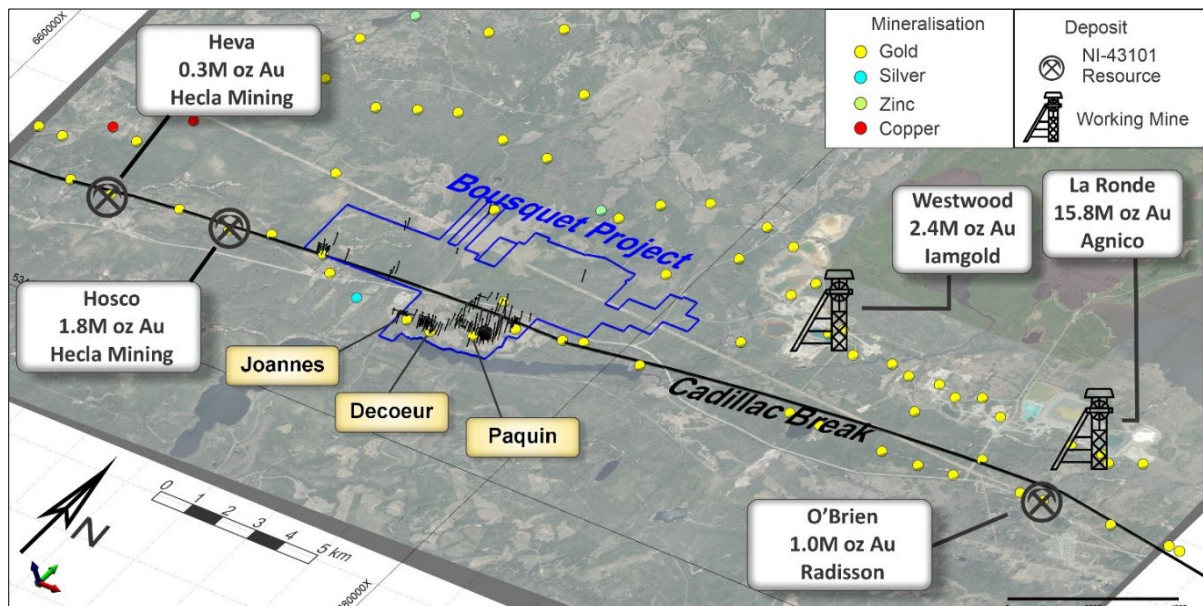


Figure 5: Setting of the Bousquet Project relative to working mines and resources

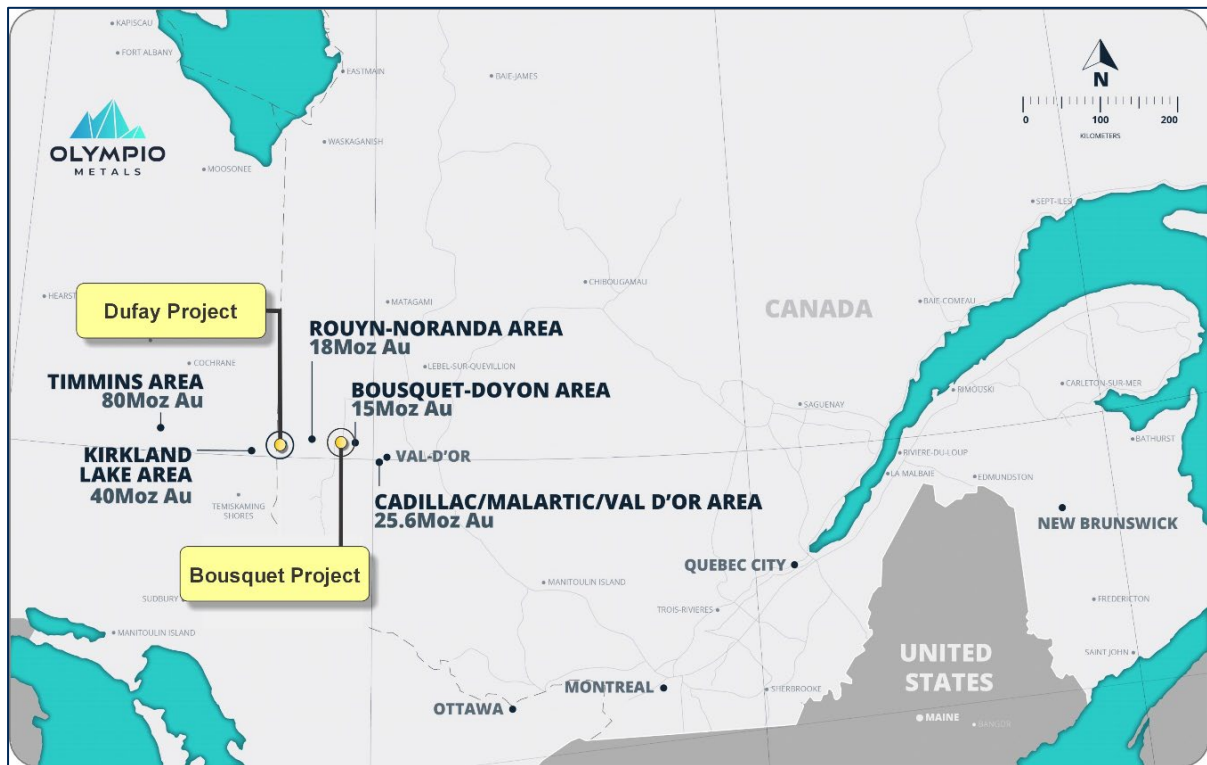


Figure 6: Dufay and Bousquet Project Locations

- ENDS -

This announcement is approved by the Board of Olympio Metals Limited.

For further information:

Sean Delaney

Managing Director

T: +61 409 084 771

E: sdelaney@olympiometals.com.au

Jason Mack

White Noise Communications

T: +61 400 643 799

E: jason@whitenoisecomms.com

Competent Person's Statement

The information in this announcement that relates to exploration results is based on information compiled by Mr. Neal Leggo, a Competent Person who is a Member of the Australian Institute of Geoscientists and a consultant to Olympio Metals Limited. Mr. Leggo has sufficient experience which is relevant to the style of mineralisation and type of deposit under consideration and to the activity which he is undertaking to qualify as a Competent Person as defined in the 2012 Edition of the "Australasian Code for Reporting of Exploration Results, Mineral Resources and Ore Reserves". Mr Leggo consents to the inclusion in this announcement of the matters based on this information in the form and context in which it appears.

For personal use only

Forward Looking Statements

This announcement may contain certain “forward looking statements” which may not have been based solely on historical facts, but rather may be based on the Company’s current expectations about future events and results. Where the Company expresses or implies an expectation or belief as to future events or results, such expectation or belief is expressed in good faith and believed to have a reasonable basis.

However, forward looking statements are subject to risks, uncertainties, assumptions, and other factors which could cause actual results to differ materially from future results expressed, projected or implied by such forward looking statements. Such risks include, but are not limited to exploration risk, mineral resource risk, metal price volatility, currency fluctuations, increased production costs and variances in ore grade or recovery rates from those assumed in mining plans, as well as political and operational risks in the countries and states in which we sell our product to, and government regulation and judicial outcomes.

References

¹ Poulsen, K., 2017 The Larder Lake-Cadillac Break and Its Gold Districts, Economic Geology, v. 19, pp. 133-167

¹ NI 43-101 Technical Report, LaRonde Complex, Québec, Canada, March 24 2023

¹ https://s202.q4cdn.com/468687163/files/doc_news/2024/02/iag-2024-mrmr-estimate.pdf
lamgold Reserves & Resources Dec 31 2023

⁴ 1996 MECHANICAL STRIPPING REPORT, NORMAR PROPERTY, Breakwater Resources, GM54371.

ISSUED CAPITAL

Ordinary Shares: 105.5 Million

COMPANY SECRETARY

Peter Gray

BOARD OF DIRECTORS

Sean Delaney, *Managing Director*
Simon Andrew, *Non-Executive Chairman*
Aidan Platel, *Non-Executive Director*

REGISTERED OFFICE

L2, 25 Richardson Street
West Perth, WA, 6005

For personal use only

JORC Code - Table 1

Section 1 Sampling Techniques and Data

(Criteria in this section apply to all succeeding sections.)

Criteria	Explanation	Comment
Sampling techniques	<i>Nature and quality of sampling.</i>	<p>Current Exploration</p> <ul style="list-style-type: none"> Diamond core samples (NQ) were collected in timber core trays, sequence checked, metre marked and oriented at the drill site. The drill core was logged at Explo-logik core shack in Val D'Or by Quebec qualified geologists. <p>Historical Exploration</p> <p>Diamond drilling to produce core samples is the only sampling technique reported. The drilling data included in this release comes from a range of historical drilling programs. These are grouped in 3 sets as follows:</p> <p>BG Drilling: Sampling techniques from Bullion Gold drilling 2021 to 2023 (Hole series BO-21 and BO-22, GM73520) is described in detail.</p> <p>TM Drilling: Sampling techniques from Twin Mining drilling 2003 to 20xx (Hole series TMN, GM61411) are described in detail.</p> <p>20thC Drilling: Sampling techniques from all other drilling programs (mostly pre-1947) typically have no details recorded in historical records and reports.</p> <p>Channel Sampling: GM34572 1978 Channel samples were collected by electric jack hammer under the supervision of a Quebec certified geologist. Sample density appears to be appropriate to the vein density existing in mapped outcrops.</p>
	<i>Include reference to measures taken to ensure sample representivity and the appropriate calibration of any measurement tools or systems used.</i>	
Drilling techniques	<i>Aspects of the determination of mineralisation that are Material to the Public Report.</i>	<p>Current Exploration</p> <p>All drill core is NQ.</p> <p>All downhole surveying is done with an OMNIX42 (every 30m), rig alignment with a TN14 Gyro, and core orientation with a Reflex ACTIII every 6m or less.</p> <p>Historical Exploration</p> <p>All drilling within the project area has been diamond core.</p> <p>BG, TM & 20thC:</p> <p>No records of any oriented core</p> <p>The drill core size is not specified for the majority of drill holes.</p>
	<i>Drill type (eg core, reverse circulation, open-hole hammer, rotary air blast, auger, Bangka, sonic, etc) and details (eg core diameter, triple or standard tube, depth of diamond tails, face-sampling bit or other type, whether core is oriented and if so, by what method, etc).</i>	
Drill sample recovery	<i>Method of recording and assessing core and chip sample recoveries and results assessed.</i>	<p>Current Exploration</p> <ul style="list-style-type: none"> Proportion of core recovered for each 3 metre interval of core drilled is recorded in the drill database. <p>Historical Exploration</p> <p>BG, TM & 20thC:</p> <p>Core recovery is not recorded for the majority of drill holes. The measures taken by previous explorer to maximise recovery is not recorded. With no recovery data available, no comment about any recovery/grade relationship is possible.</p>
	<i>Measures taken to maximise sample recovery and ensure representative nature of the samples.</i>	
	<i>Whether a relationship exists between sample recovery and grade ...</i>	
Logging	<i>Whether core and chip samples have been logged</i>	<p>Current Exploration</p> <p>All drill core was qualitatively logged by the Explo-logik staff geologist. Logging includes lithology, alteration, mineralisation, veining and photography.</p> <ul style="list-style-type: none"> The main rock types observed in the logging were greywacke, siltstone and conglomerate. <p>Historical Exploration</p> <p>BG Drilling: All drilling has drill logs available. The drill core was logged and marked for sampling by a professional geologist. Sample lengths ranged from 0.3 to 2.0m. The main criterion for sample selection was based on the presence of one of the visible features of the mineralised zones (sulphides, visible gold, alteration, blue quartz). Logging is qualitative. The</p>
	<i>Whether logging is qualitative or quantitative in nature. Core (or costean, channel, etc) photography.</i>	
	<i>The total length and percentage of the relevant intersections logged.</i>	

		<p>majority of the core has been core has been logged. All descriptive logs are in French summary logging is in English.</p> <p>TM Drilling: All drilling has drill logs available. Logging is qualitative. All core has been logged. All descriptive logs are in English.</p> <p>20thC Drilling: Drill logs are available for some drill holes with a range of detail/quality. Measurements are generally in imperial units (feet) and logs in either French or English.</p>
<p>Sub-sampling techniques and sample preparation</p>	<p><i>If core, whether cut or sawn and whether quarter, half or all core taken.</i></p> <p><i>If non-core, whether riffled, tube sampled, rotary split, etc and whether sampled wet or dry.</i></p> <p><i>For all sample types, the nature, quality and appropriateness of the sample preparation technique.</i></p> <p><i>Quality control procedures adopted for all sub-sampling stages to maximise representivity of samples.</i></p> <p><i>Measures taken to ensure that the sampling is representative of the in-situ material collected, including for instance results for field duplicate/second-half sampling.</i></p> <p><i>Whether sample sizes are appropriate to the grain size of the material being sampled.</i></p>	<p>Current Exploration</p> <p>All core is logged, then sampling intervals are selected by the logging geologist, with a maximum sample interval of 2m.</p> <p>Core samples were collected by sawing each sample interval in half lengthwise with a bench rock saw. One half of the interval was returned to the core box, and the other half was placed in a plastic bag with a tag. The tag number was marked in indelible ink on the outside of the bag, and the bag was sealed with a plastic tie-wrap.</p> <p>Sample are sent to AGAT Laboratories in Thunder Bay. The half core samples were crushed to 90% passing 2mm and then riffle split to a 250g sub-sample that was pulverised to pulp 90% passing 105µm.</p> <p>Historical Exploration</p> <p>BG Drilling: Core samples were collected by sawing each sample interval in half lengthwise with a bench rock saw. One half of the interval was returned to the core box, and the other half was placed in a plastic bag with a tag. The tag number was marked in indelible ink on the outside of the bag, and the bag was sealed with a plastic tie-wrap.</p> <p>Sample preparation was undertaken at the Lab Expert facility in Rouyn-Noranda. The half core samples were crushed to 70% passing 2mm and then riffle split to a 250g sub-sample that was pulverised to pulp 85% passing 75µm. All analyses were done using a 50g fire assay fusion (FA) with Atomic Absorption Spectroscopy (AAS) finish. Assays exceeding 3g/t Au were checked by re-assaying using FA with gravimetric finish. Where the logging geologist deemed appropriate, the sample was analysed using metallic screen assay techniques.</p> <p>Lab Expert protocols were considered by the Qualified Person (for GM73520) to be consistent, in general, with industry standards.</p> <p>TM Drilling: Drill core was split by hydraulic splitter, and approximately half the cores sampled. Sample preparation methods are not recorded.</p> <p>20thC Drilling: Core sampling techniques of historical drilling other than BG and TM is unknown.</p> <p>Channel Sampling: GM34572 1978 sample preparation is not recorded</p>
<p>Quality of assay data and laboratory tests</p>	<p><i>The nature, quality and appropriateness of the assaying and laboratory procedures used</i></p> <p><i>For geophysical tools, spectrometers, handheld XRF instruments, etc,</i></p> <p><i>Nature of quality control procedures adopted (eg standards, blanks, duplicates, external laboratory checks) and whether acceptable levels of accuracy (ie lack of bias) and precision have been established.</i></p>	<p>Current Exploration</p> <p>All samples were analysed for Au by 50g fire assay fusion (FA) with Atomic Absorption Spectroscopy (AAS) finish (202-551), and also 34 elements by 4-acid digest with ICP_OES finish (201-070). Samples with observed or suspected coarse gold as logged by the geologist were analysed by screen Fire assay (202-121). From the pulverised sample, a 1kg sub-sample was sieved to 106µm. The +106µm fraction was analysed to extinction by FA/ICP(OES) and the -106µm fraction by FA/ICP(OES).</p> <p>AGAT protocols are considered by the Qualified Person to be consistent, in general, with industry standards.</p> <p>One certified reference material (CRM) standard and one blank were included in each batch of 20 samples (inserted at 1/19 samples) by Explo-logik staff. CRM used were OREAS 221, 231, 236, 238, 242. The blank was quartz-sericite.</p> <p>Historical Exploration</p> <p>BG Drilling: All analyses were done using a 50g fire assay fusion (FA) with Atomic Absorption Spectroscopy (AAS) finish. Assays exceeding 3g/t Au were checked by re-assaying using FA with gravimetric finish. Where the logging geologist deemed appropriate, the sample was analysed using metallic screen assay techniques.</p> <p>One certified reference material (CRM) standard and one blank were included in each batch of 20 samples (inserted at 1/19 samples). CRM used were SF85, SF100, SG102, SG115, SG81. 58% of the CRM assay results were reported higher than 3 standard deviations from the certified value, which is considered a poor performance from the lab. It was recommended to review the assay certificates and re-assay the pulps before and after the failed standards.</p> <p>TM Drilling: Hole series TMN- (Twin Mining GM61411) was assayed at ALS Vancouver using a fire assay with a 30g split, AAS finish, 5ppb detection limit. Assays over 1g/t Au were re-assayed. Twin Mining reported that no quality assurance/quality control checks were performed.</p> <p>20thC Drilling: Procedures for other historical drilling are unknown. No QA/QC data is recorded.</p> <p>Channel Sampling: GM34572 1978 Samples were analysed at Assayers Ltd, Rouyn-Noranda. By combined Fire Assay – AAS with 7ppb DL.</p>

Verification of sampling and assaying	<p><i>The verification of significant intersections by independent or alternative company personnel.</i></p> <p><i>The use of twinned holes.</i></p> <hr/> <p><i>Documentation of primary data, data entry procedures, data verification, data storage protocols.</i></p> <p><i>Discuss any adjustment to assay data.</i></p>	<p>Current Exploration Significant intersections have been reviewed by Neal Leggo, Independent Geologist. No twin holes have been drilled. No documentation of data protocols has been completed.</p> <p>Historical Exploration BG Drilling: No independent verification or twinned holes have been used. Adequate documentation of the drill data is available. No adjustments of data are recorded. TM Drilling: No independent verification or twinned holes have been used. Adequate documentation of basic aspects of the drill data is available. No adjustments of data are recorded. 20thC Drilling: No independent verification or twinned holes have been used. For the majority of historical drill holes, the data is not well documented. Translation from imperial to metric system measurements has been made in the database. Channel Sampling: GM34572 1978 no verification sampling is recorded</p>
Location of data points	<p><i>Accuracy and quality of surveys used to locate drill holes (collar and down-hole surveys), trenches, mine workings and other locations used in Mineral Resource estimation.</i></p> <p><i>Specification of the grid system used.</i></p> <p><i>Quality and adequacy of topographic control.</i></p>	<p>Current Exploration All drillholes are located using handheld GPS, accuracy ~ +/-10m. Drill collars are surveyed using an Imdex TN14 Gyro.</p> <p>Historical Exploration BG, TM & 20thC: The accuracy and location method of exploration data including historical drill holes is not recorded in the reports, logs and databases available.</p> <p>Grid system used is NAD83 / UTM zone 17N in accordance with the National Topographic System or NTS used by Natural Resources Canada for mapping.</p> <p>Topographic control is satisfactory for the exploration phase at which the project is at. Channel Sampling: GM34572 1978 samples are mapped in varying detail in numerous maps which allow the samples to be accurately located relative to outcropping geology in the field.</p>
Data spacing and distribution	<p><i>Data spacing for reporting of Exploration Results.</i></p> <p><i>Whether appropriate for the Mineral Resource ... estimation procedure(s) ...</i></p> <p><i>Whether sample compositing has been applied.</i></p>	<p>Current Exploration Completed and planned drilling is consistent with spacing used in previous drill programs, and appropriate for the mineralisation targeted, typically 25m drill hole spacing minimum.</p> <p>Historical Exploration BG, TM & 20thC: The historical drilling data has been drilled at a range of spacing, azimuth and dip to intersect the interpreted mineralised horizons. Spacing is currently insufficient for resource estimation work.</p> <p>No sample compositing has been applied. Channel Sampling: GM34572 1978 data spacing and distribution is appropriate to the vein density observed in the field</p>
Orientation of data in relation to geological structure	<p><i>Whether the orientation of sampling achieves unbiased sampling</i></p> <p><i>relationship between the drilling orientation and structures is considered to have introduced a sampling bias.</i></p>	<p>Current Exploration The drilling orientation is consistent with previous drilling and designed to maximise exposure to structural elements see in surface mapping.</p> <p>Historical Exploration BG, TM & 20thC: The drill hole sampling orientation is considered appropriate to test the mineralised target horizons. The strike of the mineralised structures targeted is generally determined with drill holes set back and angled, producing intersections across the strike, thus reducing bias. Channel Sampling: GM34572 1978 sampling orientation is optimised relative to mineralised zones</p>
Sample security	<p><i>The measures taken to ensure sample security.</i></p>	<p>Current Exploration Sample security is managed by Explo-logik staff, who are highly experienced in drill core and sample management. All drill core transport, core sampling and sample transport is conducted, or managed, by Explo-logik staff. Core samples are sent by courier to AGAT laboratories in Thunder Bay Ontario.</p> <p>Historical Exploration</p>

		<p>BG: For shipping, samples were placed in rice bags that were individually sealed with numbered, tamper-proof security tags. The rice bags were sent to Lab Expert in Rouyn-Noranda.</p> <p>TM: The selected core intervals were split under the direction and supervision of the senior geologist. All samples were hand delivered by the senior geologist or approved project technical personnel to the ALS Chemex sample preparation laboratory in Val d'Or, Quebec.</p> <p>20thC: No information about the sample security measures is present in the historical exploration reports.</p> <p>Channel Sampling: GM34572 1978 sample security is not recorded</p>
Audits or reviews	<i>The results of any audits or reviews of sampling techniques and data.</i>	No reviews or audits are recorded.

Section 2 Reporting of Exploration Results

(Criteria listed in the preceding section also apply to this section.)

Criteria	Explanation	Comment
Mineral tenement and land tenure status	<p><i>Type, reference name/number, location and ownership including agreements or material issues with third parties such as joint ventures, partnerships, overriding royalties, native title interests, historical sites, wilderness or national park and environmental settings.</i></p> <p><i>The security of the tenure held at the time of reporting along with any known impediments to obtaining a licence to operate in the area.</i></p>	<p>The Bousquet Project is a mineral property which consists of 71 claims (registered with the Quebec provincial government) covering (23.69 km²). The Property is located 30km east of the historic mining town of Rouyn-Noranda, in the province of Quebec, Canada. The property consists of a contiguous package of wholly owned tenements held under title by Bullion Gold Resources Corp and under option for purchase by Olympio. The tenements are current and in good standing with the Quebec Provincial government.</p> <p>A list of claim IDs is provided in Table 3 of previous ASX release 19th March 2025.</p> <p>Olympio are not aware of any known impediments to obtaining a licence to operate in the area.</p> <p>Numerous gold and base metal mines are currently operating in the district. New mining operations have recently been brought into production through established protocols of Quebec and Canadian authorities. No development studies have been undertaken on the Bousquet project to date.</p> <p>A royalty applies to any future mineral production. In the event that the Project is brought to commercial production, Falco will receive a 1.5% NSR royalty on the claims sold to Bullion Gold. In certain claims located in the Bousquet Township, there a number of companies holding various royalty interest. On the original Normar block, Barrick Gold and Atlanta Gold (bankrupted) each hold a 1% NSR ("Net Smelter Return") royalty while Delfer Gold Mine holds a 5% Net Profit Interest. On the Blackfly Block, Atlanta Gold holds a 1% NSR on certain claims and Globex Resources hold a 0.5% Gross Mineral Profit on 8 claims.</p>
Exploration done by other parties	<i>Acknowledgment and appraisal of exploration by other parties.</i>	<p>No mining has occurred on the property, according to available records.</p> <p>There have been 4 eras of active exploration on the property.</p> <ol style="list-style-type: none"> 1. Early 20th Century: The main gold corridor was found and explored between 1932 and 1946. During this period, the Paquin, Decoeur, Calder Bousquet and Joannes prospects were discovered and drilled. During this period, 120 drill holes for a total of 20,530m were executed on the various gold discoveries. 2. Late 20th Century: During the period extending from 1967 to 1995, exploration comprised 14 drill holes for a total of 2,532m which were drilled mainly on the Paquin prospect and just north of the Bouzan Or prospect. Various types of geophysical survey including magnetic, electromagnetic (VLF, MAXMIN and AeroTem) and IP surveys were executed on the property. Breakwater also did some stripping and mapping on the southern gold shear zone. 3. 21st Century: From 2003 to 2020, 39 drill holes were drilled for 13,574m mainly in the southeast portion of the property by Twin Mining (2003-2008, GM61411). Of the 39 drill holes, 4 holes were drilled on the Joannes Township Block and magnetic, EM and IP surveys were conducted on this block. <p>The most recent exploration (2021 to 2023) has been 26 diamond drill holes on the property for a total of 6,194 metres by Bullion Gold, concentrated at Paquin and Decoeur prospects (GM73520).</p>
Geology	<i>Deposit type, geological setting and style of mineralisation.</i>	<p>The geology of the property consists of volcano-sedimentary rocks divided in three major Groups. From North to South, there is the Cadillac Group, which is composed of turbidites, pelitic schists with beds of polymictic conglomerate and iron formations. The Timiskaming Group is composed of greywacke, siltstone, polymictic conglomerate, and talc-chlorite-carbonate schist (possibly from the Piché Formation). Occasional beds of argillite with graphitic mudstone also occurs. The Pontiac Group is composed of greywacke, interbedded with argillite, massive to pillowed mafic flows and ultramafic flows. The Piché Group is composed of a sequence of komatiites, mafic rocks, amphibolites, volcanic tuffs and flows and granitic intrusives. In many areas, the Piché formation is superposed with the CLLDZ and lies between the Cadillac and Timiskaming Groups.</p> <p>Numerous gold prospects occur on the property. Most of them are found within a gold mineralised shear zone in the southern part of the property. Gold mineralisation is associated with structurally</p>

For personal use only

		<p>controlled quartz veins (typically smoky blue-grey-white quartz) and sulphides within E-W oriented, north dipping structures. The dominant host unit is Timiskaming group turbidites, and lesser conglomerate.</p> <p>The Paquin prospect is located between 675716 and 676832mE and 5343683 and 5343802mN giving the mineralised zone a length of 1,300m and a thickness of in excess of 100 m.</p> <p>Paquin was identified through drilling as it does not outcrop. These are two mineralised envelopes (East and West) containing blue to smoky quartz veins and veinlets accompanied by visible gold, as well as disseminated or stringers of arsenopyrite, pyrite, and pyrrhotite. Each envelope is contained within silicified and carbonatised greywackes. The longitudinal sections of the East and West mineralised envelopes show that the gold mineralization is most prominent on the eastern part of the gold corridor with a length of 400m between section 676400E and 676800E. The thickness of the mineralised zone (along the hole) varies from a few meters to 10 to 12m and, in some instances, the envelope may contain more than one mineralised zone.</p> <p>The Decoeur prospect is located between 674860mE and 675300mE at 5343385mN, giving the prospect a length of 440 m. The Decoeur prospect is located immediately in the south contact with the polymictic conglomerates. The mineralization is associated with talc-chlorite-quartz-carbonate schist (probably komatiitic lava flows). Previous interpretation suggested that the mineralization was associated to an E-W fault. The mineralization is composed of stringers of pyrite, chalcopyrite, arsenopyrite and galena and associated quartz veins and veinlets and local silicification. The mineralised sections vary from thirty centimetres up to 28.5m wide. The best intersection metal factor wise was in hole TMN-03-14 where an intercept 1.26 g/t Au over 18.6m was recorded.</p> <p>The Joannes prospect was discovered by drilling in 1937. The gold mineralization is vein-type associated with clastic sediments (turbidites) of the Timiskaming Group. Minor komatiitic basalts are also present. Gold is associated with disseminated pyrite in quartz veins. Traces of chalcopyrite and arsenopyrite are also present. The shear zone contains several quartz veins and some pyrite. Other prospects and showings of mineralisation identified within the property are of similar geology to these main prospects.</p>																																
<p>Drill hole Information</p>	<p><i>A summary of all information material to the understanding of the exploration results including a tabulation of the following information for all Material drill holes:</i></p>	<p>Current drilling information is provided in Tables 1 and 2 of this announcement, and tables in previous recent ASX releases on the Bouquet Project</p> <p>All historical drillholes referred to in figures or text are included in Appendix 1 of previous ASX release 26th February 2025, together with reference document number (SIGEOM).</p> <p>For the many old historical holes, limited meta-data and detailed information are preserved in the records, thus verification of location and results is not possible.</p> <p>Basic collar information is available for all 200 drill holes as presented in Appendix 1 of previous ASX release 26th February 2025, and summarised below:</p> <table border="1" data-bbox="630 1176 1508 1400"> <thead> <tr> <th>Prospect</th> <th>Number Drill Holes</th> <th>Total Metres Drilled</th> <th>Grade (g/t) x Thickness (m) > 1</th> </tr> </thead> <tbody> <tr> <td>Paquin</td> <td>62</td> <td>13183</td> <td>301</td> </tr> <tr> <td>Amadee</td> <td>14</td> <td>458</td> <td>7</td> </tr> <tr> <td>Decoeur</td> <td>25</td> <td>7217</td> <td>90</td> </tr> <tr> <td>Joannes</td> <td>28</td> <td>3674</td> <td>20</td> </tr> <tr> <td>CB-1</td> <td>11</td> <td>2128</td> <td>7</td> </tr> <tr> <td>Regional</td> <td>60</td> <td>16474</td> <td>67</td> </tr> <tr> <td>Total</td> <td>200</td> <td>43134</td> <td>492</td> </tr> </tbody> </table>	Prospect	Number Drill Holes	Total Metres Drilled	Grade (g/t) x Thickness (m) > 1	Paquin	62	13183	301	Amadee	14	458	7	Decoeur	25	7217	90	Joannes	28	3674	20	CB-1	11	2128	7	Regional	60	16474	67	Total	200	43134	492
Prospect	Number Drill Holes	Total Metres Drilled	Grade (g/t) x Thickness (m) > 1																															
Paquin	62	13183	301																															
Amadee	14	458	7																															
Decoeur	25	7217	90																															
Joannes	28	3674	20																															
CB-1	11	2128	7																															
Regional	60	16474	67																															
Total	200	43134	492																															
<p>Data aggregation methods</p>	<p><i>... weighting averaging techniques, maximum and/or minimum grade truncations should be stated.</i></p> <p><i>The assumptions used for any reporting of metal equivalent values.</i></p>	<p>Where drill intervals have been aggregated, the calculations are recorded as being weighted according to interval length. No allowance for recovery or truncations of grades are recorded in the documentation available.</p> <p>Significant drill intercepts noted in figures and tables are reported at a minimum cut-off grade of 1.0 gram per tonne gold per metre.</p> <p>Significant drill intercepts noted in Table 1 of previous ASX release 19th March 2025 for the Paquin and Decoeur prospects are reported at a minimum cut-off grade of 1.0 gram per tonne gold per metre.</p> <p>No metal equivalent values or formulas have been used.</p>																																
<p>Relationship between mineralisation widths and intercept lengths</p>	<p><i>These relationships are particularly important in the reporting of Exploration Results.</i></p> <p><i>If the geometry of mineralisation with respect to the drill hole angle</i></p>	<p>Sample mineralisation intervals are reported as down-hole observed intervals in drill core. The true widths of mineralisation have not been calculated on a drill hole intercept basis in available historical documentation. There are many variations of drill hole orientation and lode orientation across the prospects.</p>																																
<p>Diagrams</p>	<p><i>Appropriate maps and sections (with scales) and tabulations of intercepts should be included ...</i></p>	<p>The maps and figures provided in this announcement provide an overview of the Bousquet project and accurately reflect recent and historical exploration data as provided by the vendors in project databases and reports. The accuracy of information in databases and reports are being reviewed by Olympio personnel as the project progresses. Detailed maps and sections will be provided in further market announcements as targeting work on each prospect progresses and drill testing is planned.</p>																																

Balanced reporting	<i>Where comprehensive reporting of all Exploration Results is not practicable</i>	<p>The project has seen a long history of exploration with a significant body of data collected with minimal recording of methods and parameters during the early 20th Century. Later exploration data has been reported to Quebec/Canadian/TSX standards of the day. No reporting to ASX/JORC Code standard has been previously undertaken. Comprehensive reporting will require time consuming search and review of historical records, field assessments, inspection of preserved drill cores, etc prior to historical data being deemed suitable for reporting in the current exploration context. This is being undertaken on a prospect by prospect basis as the exploration program proceeds.</p>
Other substantive exploration data	<i>Other exploration data, if meaningful and material, should be reported.</i>	<p>In 2021 Bullion gold contracted Novatem to carry out a 1,114 line-km high-resolution helicopter-borne magnetic survey on the Bousquet project. During the late 20th century various types of geophysical survey including magnetic, electromagnetic (VLF, MAXMIN and AeroTem) and IP surveys were executed on the property. Magnetic, EM and IP surveys were conducted on the Joannes Township Block. Some stripping and mapping on the southern gold shear zone also occurred during this era of exploration. Technical details of the VLF and Magnetometer Ground Surveys conducted in 1986 were provided in ASX release of 8 September 2025.</p>
Further Work	<i>The nature and scale of planned further work.</i>	<p>Completion of logging and sampling of the drilling is ongoing, with assaying undertaken sequentially. Further drilling is planned for the Paquin, Decoeur Extension and Amadee projects. Drill targets are continually being revised and optimised.</p>

For personal use only