

Personal use only



WIA GOLD

Kokoseb Gold Project - Scoping Study Results

30 September 2025

ASX: WIA

Disclaimer

General Information and Disclaimer

This presentation has been prepared for the purposes of providing information to the recipient regarding Wia Gold Limited (**Wia Gold** or the **Company**). It does not, and does not purport to, contain all the information that the recipient may require to evaluate the Company. It should be read in conjunction with Wia Gold's other periodic and continuous disclosure announcements, which are available at www.asx.com.au.

No representation or warranty is given as to, and the recipient must not rely on, any information, statement or opinion contained in this presentation, or its accuracy, reasonableness or completeness. Except for statutory liability which cannot be excluded, each of Wia Gold, its affiliates, directors, employees, advisers and agents expressly disclaims any responsibility for the accuracy or completeness of the material contained in this presentation and excludes all liability whatsoever for any loss or damage of any kind arising as a result of the use of, or reliance on, the information in this presentation.

This presentation does not take into account the investment objectives, financial situation or particular needs of any investor, potential investor or any other person. No investment decision should be made in reliance on this presentation. Independent financial and taxation advice should be sought before making any investment decision.

Forward Looking Statements

This presentation may contain certain forward looking statements and projections regarding: estimated, resources and reserves; planned production and operating costs profiles; planned capital requirements; and planned strategies and corporate objectives.

Forward-looking statements are subject to a variety of known unknown risks, uncertainties and other factors that could cause actual events or results to materially differ from those reflected in the forward- looking statements, including, without limitation: inherent uncertainties and risks associated with mineral exploration; uncertainties related to the availability of financing necessary to undertake activities on Wia

Gold's properties; uncertainties related to the possible recalculation of, or reduction in Wia Gold's minerals resources; uncertainties related to the outcome of studies; uncertainties relating to fluctuations in gold prices; the risk that Wia Gold's title to its properties could be challenged; risks related to Wia Gold's ability to attract and retain qualified personnel, uncertainties related to general economic and global financial conditions; uncertainties related to the competitiveness of the industry; risk associated with Wia Gold being subject to government regulation, including changes in regulation; risks associated with Wia Gold being subject to environmental laws and regulations, including a change in regulation; risks associate with Wia Gold's need for governmental licenses, permits and approvals; uninsured risks and hazards; risk related to the integration of businesses and assets acquired by Wia Gold; risk associated with Wia Gold having no history of earnings or production revenue; risks associated with fluctuation in foreign exchange rates; risks related to default by joint venture parties (if any), contractors and agents, inherent risks associated with litigation; risk associated with potential conflicts of interest; risk related to effecting service or process on directors resident in foreign countries; uncertainties related to Wia Gold's limited operating history; risks related to Wia Gold's lack of a dividend history; risks relating to short term investments; and uncertainties related to fluctuations in Wia Gold's share price.

Wia Gold's forward-looking statements are based on the assumptions, beliefs, expectations and opinions of management as of the date hereof and which Wia Gold believes are reasonable in the circumstances, but no assurance can be given that these expectations will prove to be correct. These assumptions include but are not limited to that Wia Gold's exploration of its properties and other activities will be in accordance with Wia Gold's public statements and stated goals, that there will be no material adverse change affecting Wia Gold or its properties, anticipated costs and timing for Wia Gold's activities and such other assumptions as set out herein.

Such forward looking statements/projections are estimates for discussion purposes only and should not be relied upon. They are not guarantees of future performance and involve known and unknown risks, uncertainties and other factors many of which are beyond the control of the Company.

The forward-looking statements/projections are inherently uncertain and may therefore differ materially from results ultimately achieved.

The Company does not make any representations, provides no warranties concerning the accuracy of the forward looking statements and disclaims any obligation to update or revise any forward-looking statements based on new information, future events or otherwise except to the extent required by applicable laws.

Mineral Resource Estimate

The information in this presentation that relates to the mineral resource estimate for the Kokoseb Project was reported in an announcement dated 15 May 2023, 16 April 2024, and 16 July 2025. The Company confirms that it is not aware of any new information or data that materially affects the information included in the original market announcement and that all material assumptions and technical parameters underpinning the mineral resource estimate in that announcement continue to apply and have not materially changed.

Production Targets and Forecast Financial Information

The information in this presentation that relates to production targets and forecast financial information for the Kokoseb Project was reported in the Company's announcement dated 30 September 2025. The Company confirms that all the material assumptions underpinning the production target and forecast financial information derived from the production target in the previous announcement continue to apply and have not materially changed.

Previously Reported Results

There is information in this presentation relating to exploration results which were previously announced, the dates of which are referenced in the presentation. The Company confirms that it is not aware of any new information or data that materially affects the information included in the original market announcements.

Cautionary Statement

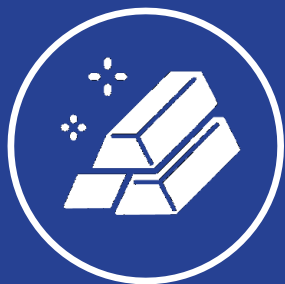
- The Scoping Study referred to in this presentation has been undertaken for the purpose of ascertaining whether a business case can be made to proceed to feasibility studies on the technical and financial viability of a mining and processing operation at the Project and provide a preliminary evaluation of the development based on the updated July 2025 Mineral Resource estimate.
- The Scoping Study is a preliminary technical and economic study of the potential viability of the Project. It is based on low level technical and economic assessments that are not sufficient to support the estimation of ore reserves. Further exploration and evaluation work and appropriate studies are required before the Company will be in a position to estimate any Ore Reserves or to provide any assurance of an economic development case. The accuracy of the capital and operating cost estimates is $\pm 25\%$.
- The Mineral Resources underpinning the production targets in this announcement have been prepared by a competent person in accordance with the requirements of the JORC Code. Inferred Resources comprise 18% of the production schedule over the modelled life of mine, with the remaining 82% being comprised of Indicated Resources. The Company has concluded that it has reasonable grounds for disclosing a production target which includes an amount of Inferred Mineral Resources. However, there is a low level of geological confidence associated with Inferred Mineral Resources and there is no certainty that further exploration work will result in the determination of Measured and/or Indicated Mineral Resources or that the production target itself will be realised. Inferred Resources comprise less than 6% of the production schedule in the first seven years of production and is not the determining factor in Project viability.
- The Scoping Study is based on the material assumptions outlined below. These include assumptions about the availability of funding. While the Company considers all of the material assumptions to be based on reasonable grounds, there is no certainty that they will prove to be correct or that the range of outcomes indicated by the Scoping Study will be achieved. To achieve the range of outcomes indicated in the Scoping Study, funding of in the order of US\$414 million will likely be required. Investors should note that there is no certainty that the Company will be able to raise that amount of funding when needed. It is also possible that such funding may only be available on terms that may be dilutive to or otherwise affect the value of the Company's existing shares. It is also possible that the Company could pursue other 'value realisation' strategies such as a sale, partial sale or joint venture of the Project. If it does, this could materially reduce the Company's proportionate ownership of the project. Given the uncertainties involved, investors should not make any investment decisions based solely on the results of the Scoping Study.



WIAGOLD

INVESTMENT HIGHLIGHTS

ASX: WIA



Fast growing
Kokoseb gold
project

Indicated and
Inferred MRE
2.93M oz at 1.0 g/t
open pit



Established, well
recognised mining
jurisdiction

Stable jurisdiction,
excellent infrastructure
attracting significant
investment capital



Kokoseb Scoping
Study completed
and DFS in H2 '26

Scoping Study starts
the application
process for Mining
License



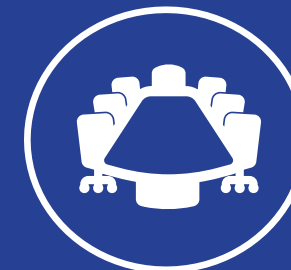
Accelerated DD/RC
drilling to drive
resource growth

Strike of 5.4km / open at
depth - Kokoseb on
track to be Namibia's 4th
commercial gold mine



Straightforward
metallurgy and
process route

Preliminary met
testwork delivers
over 90% gold
recoveries

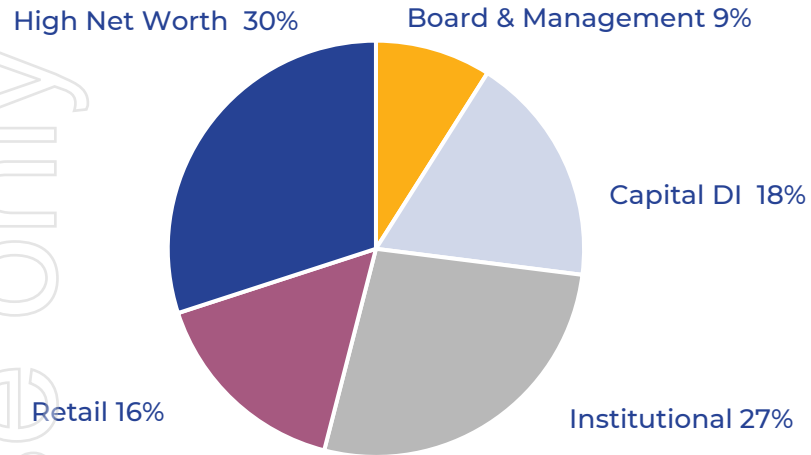


Experienced
Management and
Board

Discovered, permitted,
financed and built
some of Africa's largest
gold mines

Corporate Snapshot

Shareholder Register Split



Total shares on issue ²	1,475
Options and performance rights (M) ³	60
Share price (A\$/share) ¹	0.36
Market cap (A\$M, undiluted)	531
Cash – pro-forma (A\$M) ⁴	52
Debt (A\$M) ⁴	Nil
Via Gold is included in the S&P All Ordinaries index	

Josef El-Raghy
Executive Chairman



Scott Funston
Chief Financial Officer



Pierrick Couderc
Manager Exploration



Broker	Analyst
	Justin Chan
	Patrick Streater
	Andrew Richards
	David Butler/Gabriele Ejikeme

1. At 26 September 2025 (closing price)

2. At 26 September 2025

3. At 26 September 2025, 21.4 million options with various strikes and expiries, and 38.7 million performance rights with various expiry dates

4. At 31 August 2025

Namibia

A Premier Mining Destination



POLITICALLY STABLE & MINER FRIENDLY

- Stable democracy, independent judiciary, diverse economy
- Political and social support of mining
- Low-risk jurisdiction, ranked 33/86 by the Fraser Institute 2023 Survey of Mining Companies for policy attractiveness (above Nova Scotia, Brazil and Victoria) and 4th for Investment Attractiveness in Africa (after Botswana, Morocco, Zambia)

OUTSTANDING INFRASTRUCTURE

- Kokoseb has road access from the capital and proximity to power grid
- Namibia has modern port and rail infrastructure

NAMIBIA'S GOLD DISTRICT

- QKR's Navachab, B2Gold's Otjikoto (both producing), Shanjin's Twin Hills (in construction), and Ondundu (exploration) projects in proximity in a rapidly growing gold district



LONG ESTABLISHED MINING INDUSTRY

- Major revenue earner and employer in Namibia (14% of GDP, 40% of foreign earnings in 2024)
- Stable tax code and fair fiscal terms (37.5% tax, 3% royalty, 1% export levy, 15% VAT)
- Current and former in-country mining producers (gold, diamonds, uranium, copper and industrial metals) include:

Precious Metals	Other
 	 
	
	
	 



WIA GOLD

KOKOSEB GOLD PROJECT SCOPING STUDY

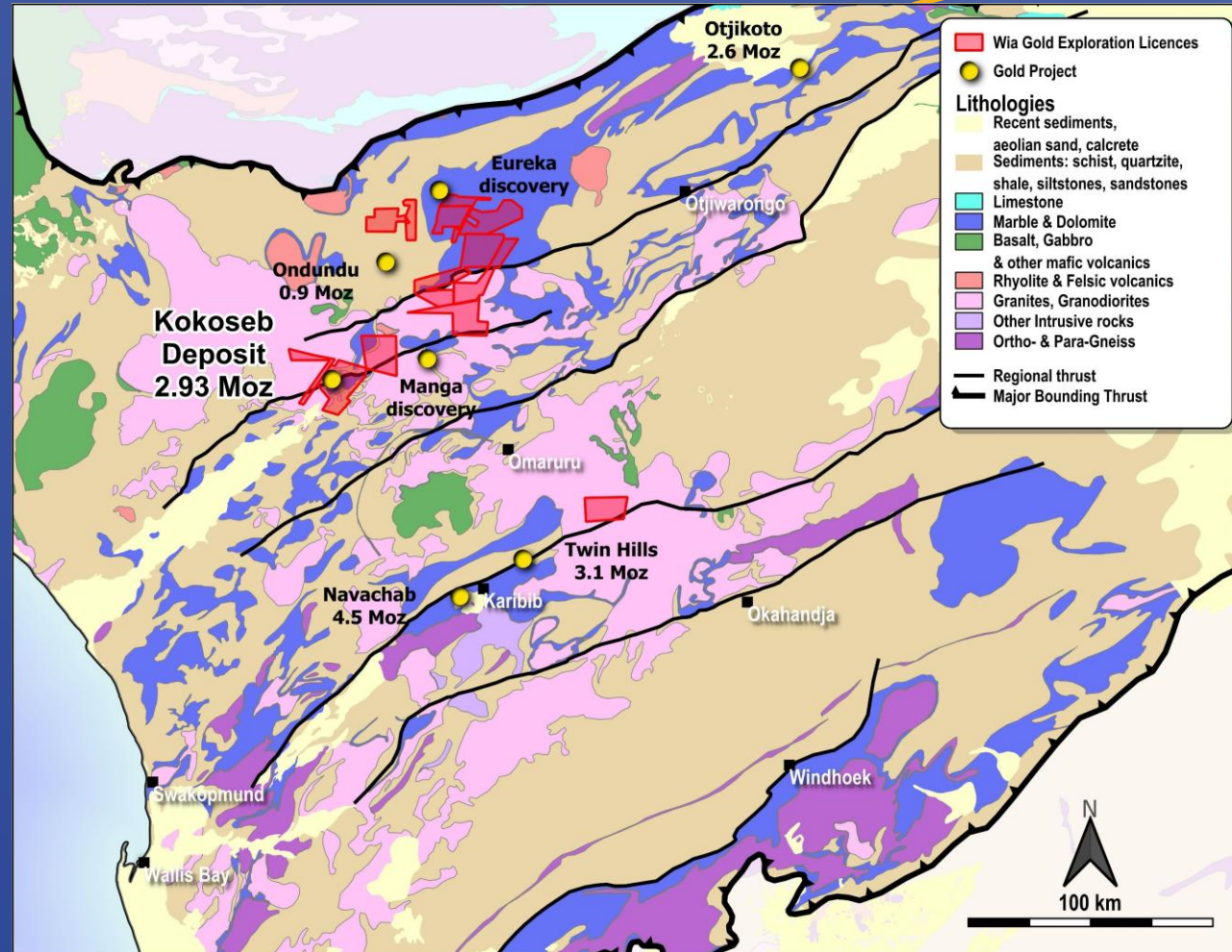
Personal use only



Wia Gold – Namibia licences

Fast growth licence holder in proven gold jurisdiction

- Exploration licences covering c.3,000km²
- Lies within the Pan-African Damara Orogenic Belt which is largely underexplored for gold mineralisation
- Sediment-hosted style gold deposits, structurally controlled
- Similar structures to existing gold mines of B2Gold's Otjikoto and QKR's Navachab (both in production), and Shanjin's Twin Hills (in construction)



Kokoseb Scoping Study Highlights

Initial 11+ year ~146koz pa, simple open pit operation confirms outstanding economics with significant upside

Strong production profile

~177koz pa
For first 5 years

~146koz pa
Average LOM

Simple mining & Processing

Conventional open pit, drill & blast, load & Haul operation

LOM strip ratio 6:1

Conventional 5.25Mtpa CIL processing plant

Low-cost High margin

US\$1,447/oz
LOM average AISC

Yr 1 – 5 AISC of US\$1,265/oz

US\$358.8M
Pre-production capital cost

Robust NPV⁽⁵⁾ and IRR (Post-tax)

NPV US\$646M
IRR 38%
(@ conservative US\$2,600/oz)

NPV US\$1,269M
IRR 60%
(@ US\$3,450/oz gold price)

Each US\$100/oz adds ~US\$114.4m NPV (pre-tax) and ~US\$73.3m post tax NPV

Rapid Payback Period (Post-tax)

1.8 Years
(@ US\$2,600/oz)

1.25 Years
(@ US\$3,450/oz gold price)

Growth Potential

Open at depth and along 5.4km strike

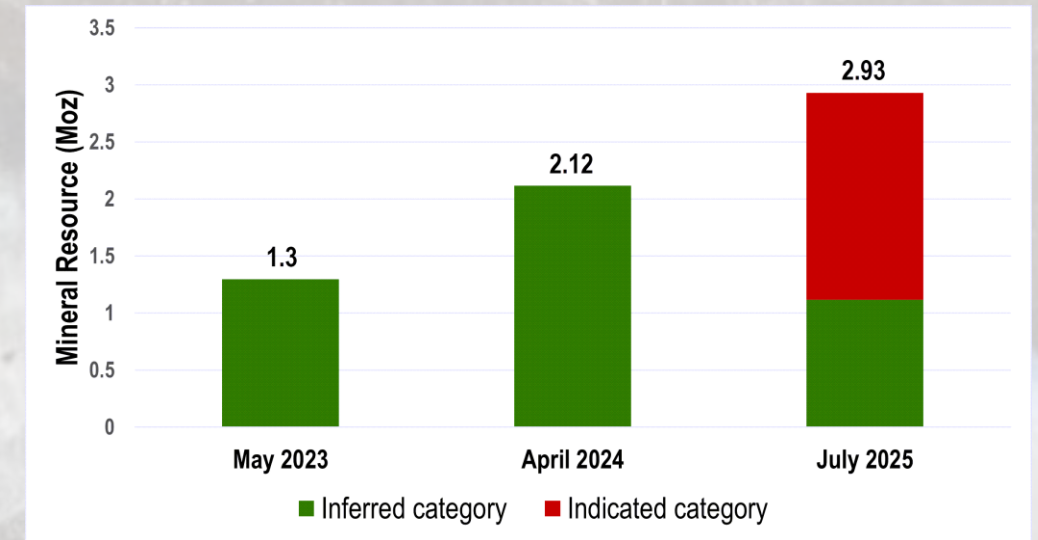
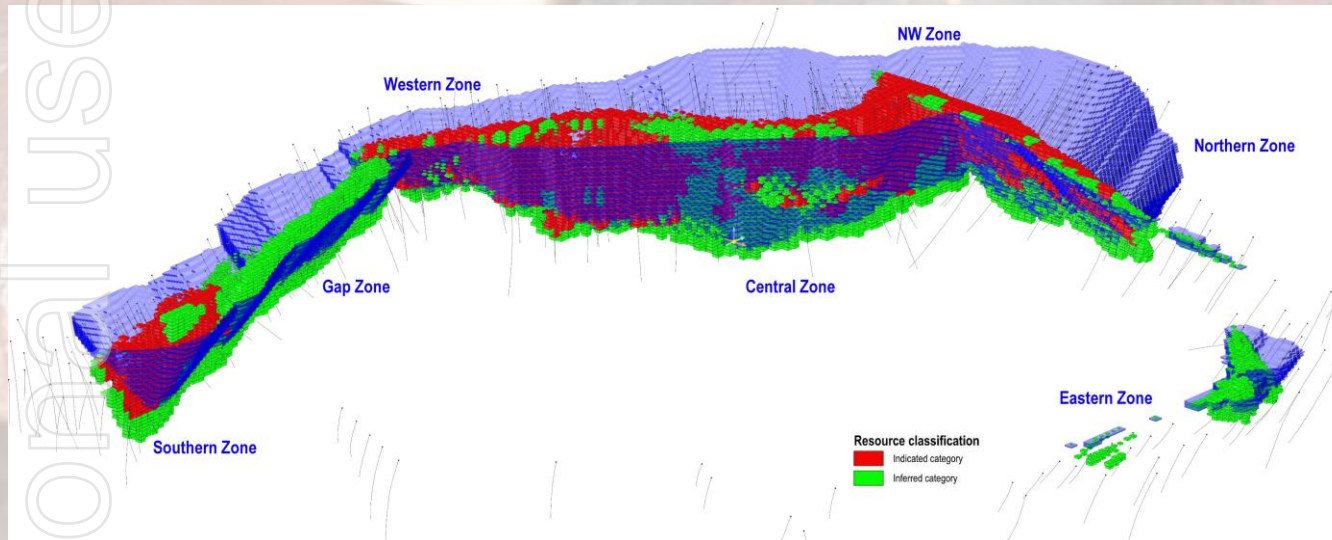
Accelerated DD/RC drilling ongoing to drive resource growth

Maiden Underground MRE targeted mid-2026

Kokoseb MRE – July 2025¹

Cut-off Au g/t	Indicated			Inferred			TOTAL		
	Tonnes (Mt)	Au g/t	Au Moz	Tonnes (Mt)	Au g/t	Au Moz	Tonnes (Mt)	Au g/t	Au Moz
0.18	110	0.67	2.37	78	0.62	1.6	188	0.65	3.92
0.30	82.6	0.82	2.18	58	0.75	1.4	141	0.79	3.58
0.50	54.2	1.04	1.81	35	0.99	1.1	89	1.0	2.93
0.80	29.1	1.39	1.30	17	1.4	0.8	46	1.4	2.07

Personal use only



Kokoseb July 2025 MRE vs previous MREs²

1. Refer to ASX announcement 16 July 2025

2. Refer to ASX announcements dated 15 May 2023 and 16 April 2024; May 2023 maiden Inferred MRE of 41Mt at 1.0 g/tAu for 1.3Moz Au (US\$1,800/oz gold price), April 2024 Inferred MRE of 66Mt at 1.0 g/t Au for 2.12Moz Au (US\$1,800/oz gold price) and July 2025 updated MRE totals 89Mt at 1.0 g/t Au for 2.93Moz Au (US\$2,300/oz gold price).

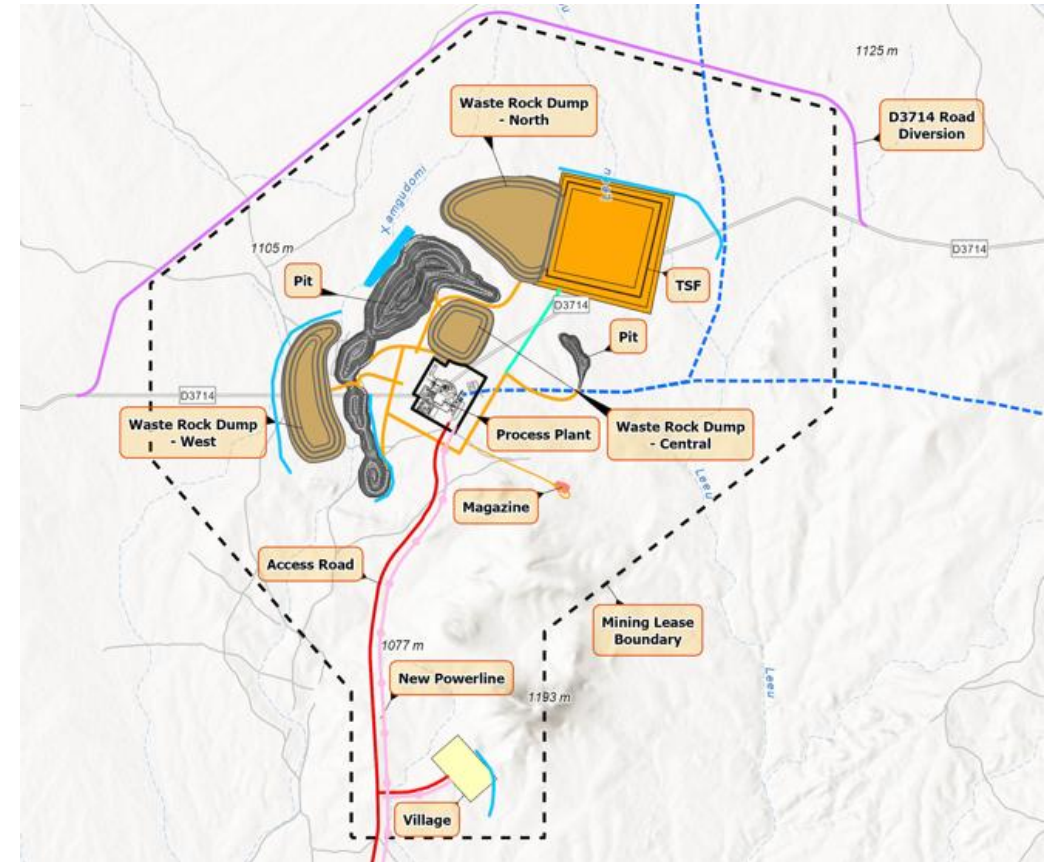
Simple open pit mining, load and haul operation

Conventional open pit load and haul

- Conventional open pit, drill & blast, load & haul operation
- Low LOM strip ratio 6 : 1 (waste : ore)
- Pit design split into 10 stages with immediate focus on higher value areas
- Scheduled based on maximum mining rate of 45Mtpa using 200t class diggers matched to 90t dump trucks
- Vertical advance rates generally less than 60m / year

The pit optimisations, production scheduling and associated costing are based on the most recent MRE

- Total Tonnes: 427.8Mt
- Waste Tonnes: 369Mt
- Strip ratio: 6.3
- Mining Inventory: 58.9Mt
- Au Grade g/t: 0.97
- Insitu metal: 1,833koz



- 31 MW of power required, with access to Namibian grid from the Omburu substation (66kV connection runs through Kokoseb license)
- Construction of 12.7km surfaced road connecting C36 road to accommodation village and mine/plant site

Tailings & Water

Dry tailings solution and water supply sources identified

FILTERED STACK TFS

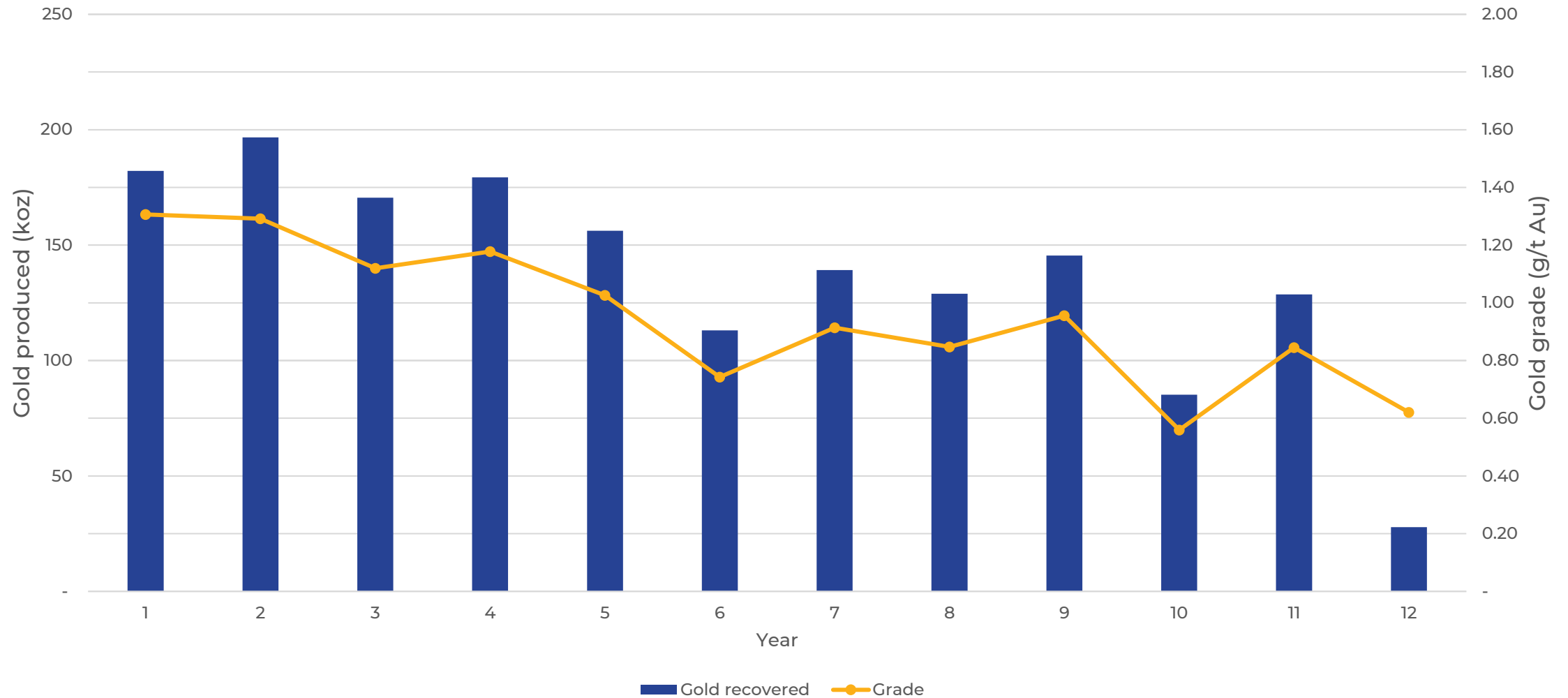
- **Strategic Selection:**
 - Location, materials, and configuration chosen via Multi-Criteria Analysis.
- **Core Design:**
 - Single-cell, filtered stack TSF.
 - HDPE-lined upstream slope and basin.
- **Staged Development:**
 - Starter embankment (5m) provides ~2 years storage.
 - Life of Mine: 4 raises, each adding ~2-2.5 years capacity.
- **Closure:**
 - Reprofiling of outer embankments (with WRD rehab).
 - Capped tailings surface, covered with stockpiled topsoil.

PROJECT WATER SUPPLY

- **Demand: ~1.1 million m³/year.**
- **Primary Sources**
 - Okombahe WSS: 30 km SE, potential 933,000 m³/a (expandable).
 - Ozondati WSS: 23 km N, potential ~220,000 m³/a.
- **Development Plan:**
 - Expand Okombahe WSS (15 new bores, 11 km).
 - Expand Ozondati WSS (10 new bores, 8 km).
 - Diesel-driven pumps, central pipeline.
- **Potential Future Source:**
 - Omaruru Alluvial Plains (OmAP): Indicated 52.5 million m³ fossil groundwater.
 - Currently under full investigation by SLR.
- **Ongoing Investigation (SLR):**
 - Geophysics, drilling, pump testing, and groundwater modelling to confirm supply.
- **Regulatory:**
 - Application to NamWater for up to 1.5 million m³/year submitted; assessment underway.
- **Mine Dewatering:**
 - Used preferentially, but not a primary supply source.

Production profile

Average ~146koz per annum over 11.3 years life of mine, with initial 5 years at average ~177koz per annum



Personal use only

Operating & Pre-Production Capital Costs

Low AISC and competitive capital costs drives rapid payback period

Scoping Study Operating Cost Breakdown

Area	LOM Cost (US\$m)	Unit Cost (US\$)	Unit Cost (US\$/oz)
Open Pit Mining	\$1,197	\$2.82/t total mined	\$724
Processing & Tailings Handling	\$834	\$14.16/t ore	\$504
General & Admin	\$141	\$12.4m pa	\$85
Transport & Refining	\$7	\$4.00/oz	\$4
C1 Cash Costs	\$2,178		\$1,317
Royalties	\$172	4% of revenue	\$104
Sustaining Capital and Closure	\$42	-	\$25
All-in Sustaining Costs	\$2,392		\$1,447

Note: These numbers reflects Closure capital less salvage value of US\$20m.

All In Sustaining Costs	Base case US\$2,600/oz	Spot Price US\$3,450/oz
Years 1-5	US\$1,265/oz	US\$1,299/oz
LOM	US\$1,447/oz	US\$1,481/oz

Scoping Study Pre-Production Capital Cost Breakdown

Area	US\$m ¹
Direct Costs	
Contract Distributables	33.6
Process Plant	147.6
Reagents and Plant Services	24.9
Non-Process Infrastructure	33.2
Tailings Storage Facility	15.3
Water Supply	9.6
Power Supply and Distribution	20.9
Construction Indirect Costs	37.7
Sub-Total	322.8
Owners Costs	
Owners Project Management	11.4
Pre-Production Costs	11.5
First Fills & Spares	5.6
Mobile Equipment	7.4
Sub-Total	36.0
Total	358.8

Notes:

Totals may not compute due to rounding

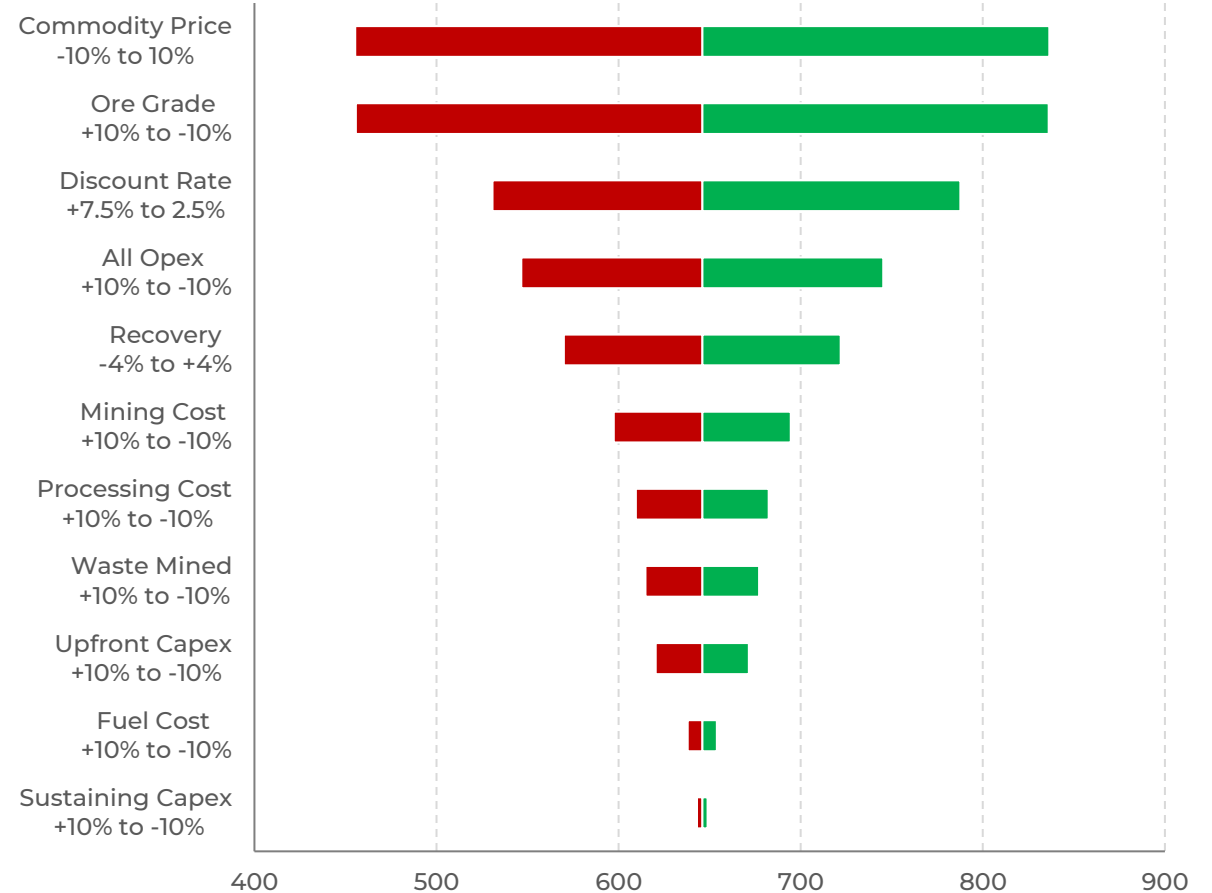
Scoping Study Financial Metrics

Simple, long-life gold development project, with rapid payback, compelling economics and strong leverage to the current gold price

Scoping Study Summary Metrics

Production Metrics	Mine Life	years	11.4	
	Ore Mined / Processed	Mt	58.9	
	LOM Avg. Grade	g/t Au	0.97	
	Processing Rate	Mtpa	5.25	
	LOM Avg. Processing Recovery	%	90%	
	LOM Avg. Gold Production	koz Au	146	
Financial Metrics	Gold Price Case	US\$/oz	2,600	3,450
	Pre-production Capital Cost	US\$m	358.8	
	CI Cash Costs	US\$/oz	1,317	
	AISC (LOM)	US\$/oz	1,447	1,481
	Post-tax NPV(5%)	US\$m	646	1,269
	Post-tax IRR	%	38%	60%
	Payback Period	years	1.8	1.25

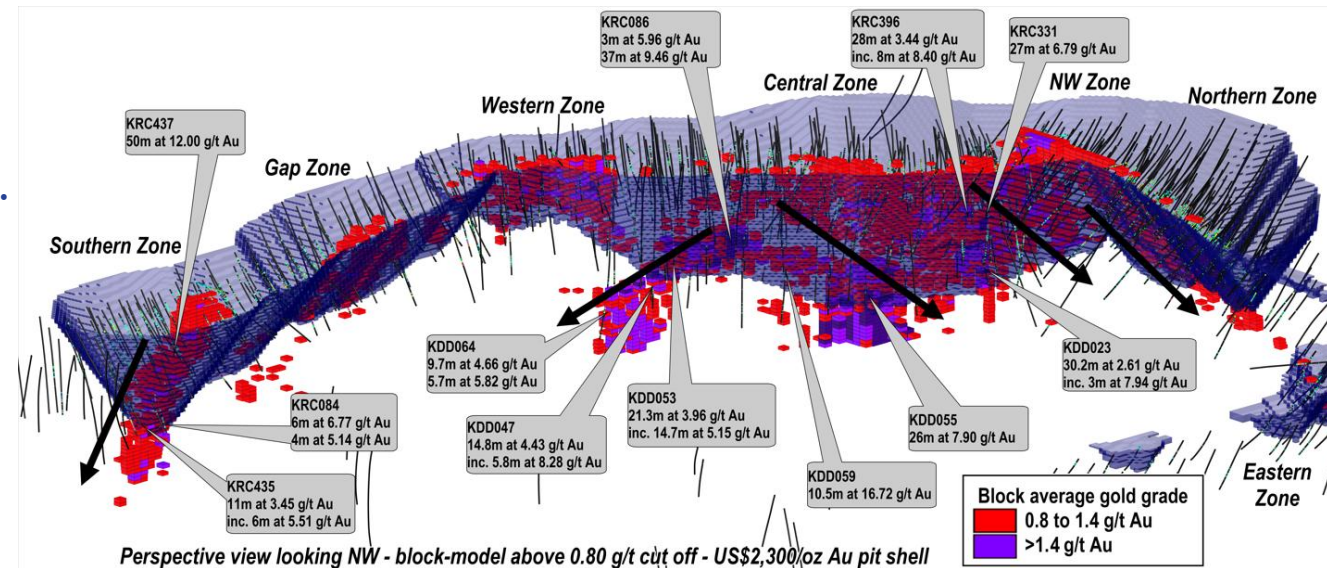
Post-tax NPV_{5%} Sensitivities (US\$m) at Au @ US\$2,600/oz



Significant Upside Potential for Underground Mining

Deeper higher-grade resources

- Potential for deeper, higher-grade resources¹ which may be economically exploitable through underground mining.
- Drilling on-going at Kokoseb with 5 Diamond Drilling rigs testing deeper areas of mineralisation.
- 2 Reverse Circulation rigs implementing in-fill drilling.
- Underground Mineral Resource Estimate (MRE) anticipated in mid-2026.



Environmental, Social & Approvals

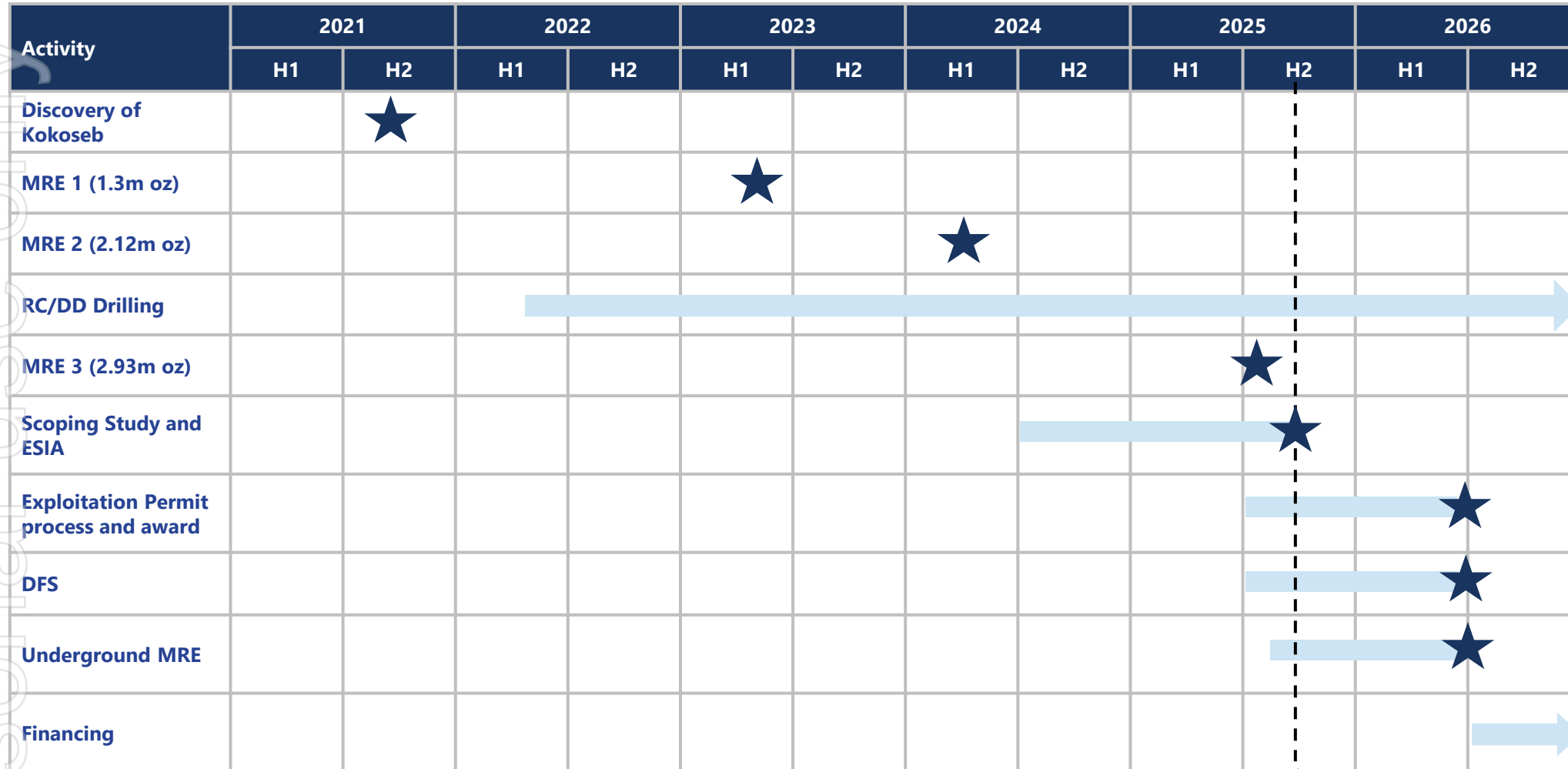
Key milestones hit and ESIA close to completion

- Mining Licence application to be submitted to be Ministry of Mines and Energy (MIME) in October 2025
- Environmental and Social Impact Assessment (ESIA) nearing completion and draft provided to stakeholders
- Following incorporation of public comments, ESIA will be submitted in Q1 2026 with the MIME and MEFT for approval and granting of the ECC



Timeline for Kokoseb Development

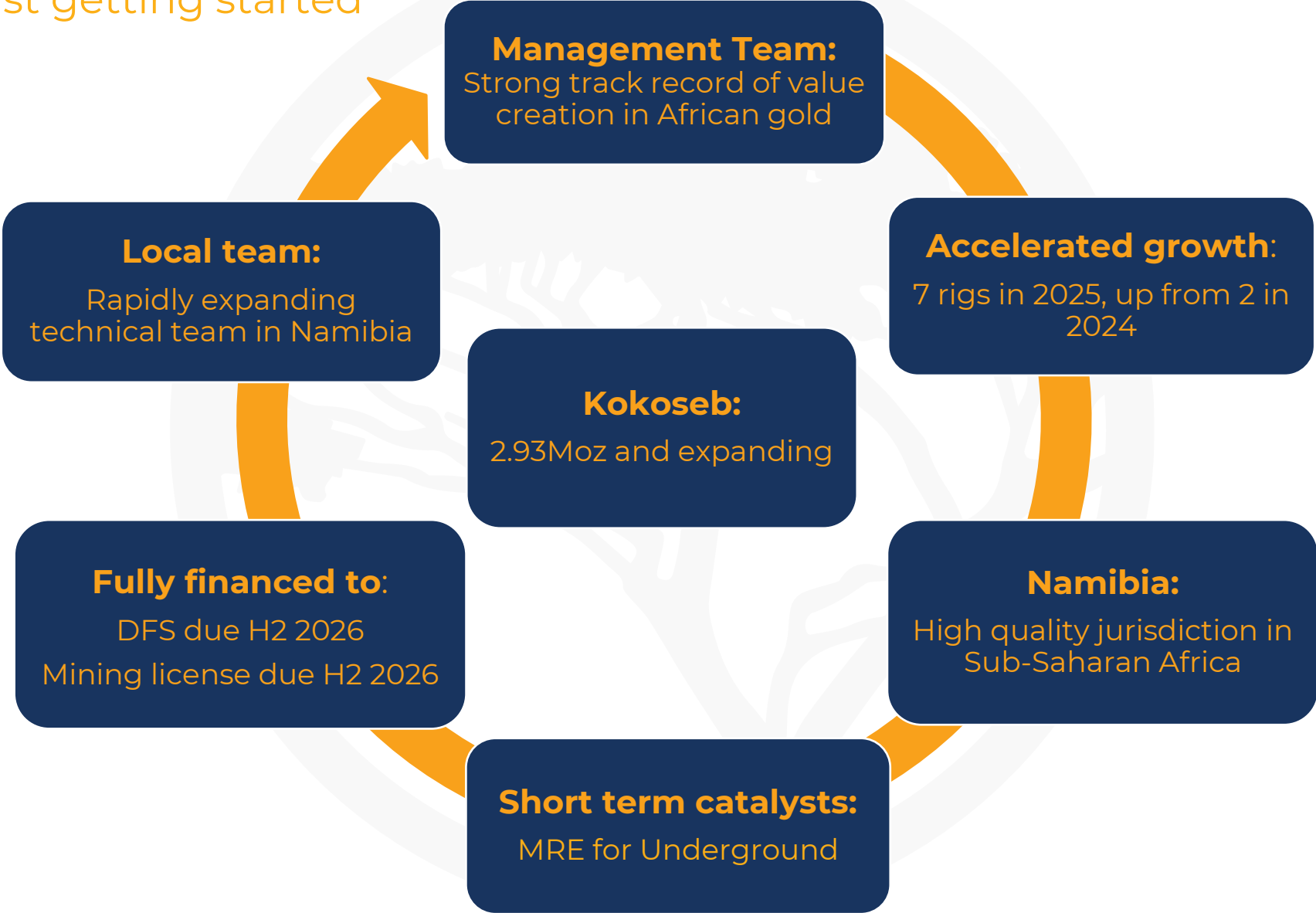
Progress to date



Today

Value Accretion

We are only just getting started



ersonal use only

Appendices



Board and key management

Experienced leadership team with a proven track record of discovery & development

Josef El-Raghy
Executive Chairman



Previously Chairman and CEO of Centamin Plc, a gold miner that he guided from **exploration, financing, development** and into **production**, which saw its market cap to grow from US\$20 million to \$4bn. AngloGold Ashanti acquired Centamin for \$2.5bn in late 2024. Josef is currently Non-Exec Chair of AIC Mines, a gold and copper producer in Queensland.

Andrew Pardey
Non-Executive Director



Currently Managing Director at Predictive Discovery, a c. A\$1bn ASX listed gold exploration company, which discovered Bankan in Guinea. Andrew has over 30 years' experience in **exploration, project development** and **operations**. Previously CEO of Centamin Plc (2015-19), he has held senior positions in West Africa with Guinor Gold Corporation and AngloGold Ashanti.

Mark Arnesen
Non-Executive Director



Mark is a Chartered Accountant with over 30 years' experience in the international resources industry and extensive expertise in the structuring and negotiation of **finance** for major resource projects. Mark has held executive roles with Billiton/Glencor, AngloGold Ashanti, Equinox Minerals Limited, Gulf Industrials Limited and Nzuri Copper Limited.

Scott Funston
Chief Financial Officer



Scott has a broad range of resource industry experience through all facets of the mining cycle from **acquisition, exploration, discovery, feasibility, financing, construction** and **operations**. Scott has proven executive level experience in several ASX listed public companies operating in a variety of diverse countries and cultures having assisted several resources companies operating throughout Australia, South America, Asia, USA, and several years with African based companies. Recently the CFO of Challenger Gold and Avanco Resources.

Pierrick Couderc
Exploration Manager



Pierrick has over 20 years' experience in a range of commodities and geological settings. Pierrick **discovered** Kokoseb in 2021. Prior to Wia, he served as the Côte d'Ivoire **Exploration** Manager for Centamin Plc. Notably, he led the team which **discovered** the 5.4Moz Doropo Project and the 2.2Moz ABC Project. Pierrick is a French national and fluent in both English and French.

Keith Webb
General Manager



Keith has over 30 years of experience in mining and **exploration** geology ranging from Grass Roots to Resource Drilling and underground gold mining. Keith has worked extensively in **Namibia** and across Africa, working in remote savannah, desert, tropical, and temperate geographical regions. He has held **Country Manager** roles at West African Gold as well as Regional Gold Exploration and Target Generation for Phelps Dodge.

Joanna Kiernan
Company Secretary



Joanna is a governance professional with over 18 years' experience in the operation and administration of publicly listed companies, primarily in the resources sector. Ms Kiernan has held the role of Company Secretary for numerous ASX, AIM and SGX listed companies. Ms Kiernan is currently the Company Secretary of Asara Resources Limited and Marvel Gold Limited.

Exploration, Financing, Development and into Production

Experience in Africa

Board & Management has extensive experience in African projects

- Exploration
- Resource Development
- Studies/Permitting
- Financing
- Construction
- Operations

Lefa (Gold), Guinea



Siguiri, Guinea



Bankan, Guinea



Kokoseb (Gold), Namibia



Navachab Gold Mine



Husab Namibia



Tasiast, Mauritania



Sukari, Egypt



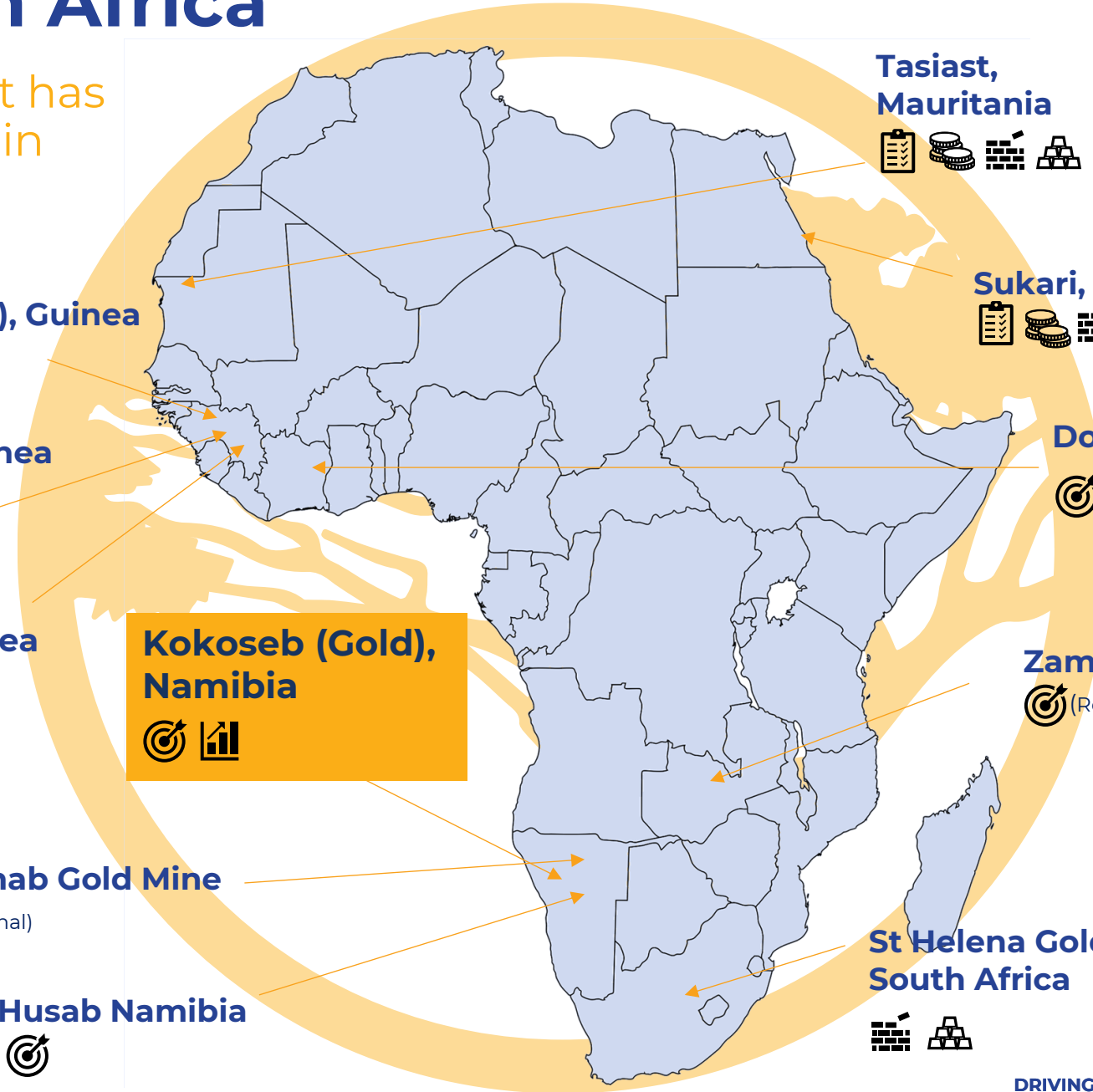
Doropo, Côte d'Ivoire



Zambia Kasempa area



St Helena Gold, South Africa



Personal use only

Contributors to Kokoseb Scoping Study

Area	Contributor
Geology & Mineral Resource Estimation	
Mining Inventory, Mine Planning & Design	
Mine Geotechnical	 PETER O'BRYAN & Associates Consultants in Mining Geomechanics
Metallurgical Testwork	 MAELGWYN MINERAL SERVICES AFRICA  Dhamana consulting
Process Plant & Infrastructure Design	 Lycopodium  Dhamana consulting
Tailings Management & Surface Water Management	
Power Supply & Distribution	
Capital Cost Estimation	 Lycopodium  Orelogy  GALETECH Group  Dhamana consulting
Operating Cost Estimation	 Lycopodium  Orelogy  GALETECH Group  FUTURE/C C.A.P. I.S.U. M.A.S. J.E.B.M.S.  Dhamana consulting
Financial Analysis	
Environmental	
Mine Closure Estimation	 AUSTRALIAN MINING ADVISORS  Dhamana consulting
Overall Study Management	

Personal use only

Infrastructure, Power, Roads

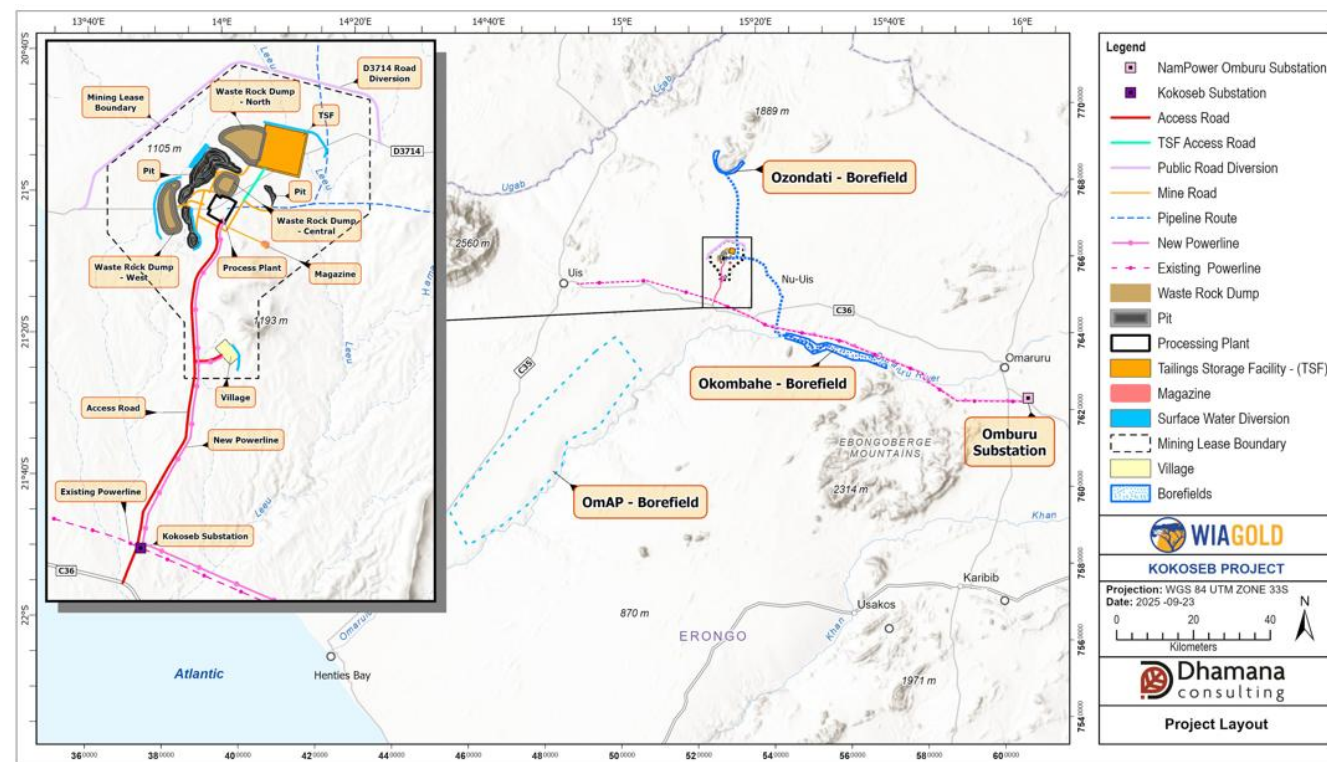
Strong foundational Strength: Power & Access.

Power

- Power requirement for the Project is an average continual operational demand of approximately 31 MW
- Power supply from the Namibian grid is cost effective compared to all other options, with an average power cost for the Project over life of mine of approximately US\$0.117/kWh
- A new 95 km 66 kV spur from Omburu substation was therefore selected to provide sufficient capacity to supply the Project

Roads & Other Infrastructure

- The proposed site access road will consist of a new all-weather surface, approximately 12.7 km long to enable access to both the accommodation village and the mine/plant site
- A range of non-process infrastructure (NPI) will be required to enable operations at the Project. This will include:
 - Access roads.
 - Offices, warehouses, workshops and other buildings.
 - Accommodation village.
 - Mining infrastructure.
 - Fuel storage and supply.
 - Surface Water infrastructure.
 - Other infrastructure.



Key Project Outcomes

Robust economics at US\$2,600/oz Au base case

	Units	Base Case US\$2,600/oz	Spot Price US\$3,450/oz
Production			
Mine Life	years	11 years and 4 months	
Total Gold Production	koz	1,653	
Average Gold Production			
Years 1 to 5	koz/a	177	
Life of Mine	koz/a	146	
Proportion Inferred (contained gold)	%	18%	
Costs			
Capital Costs	US\$m	358.8	
Mining Mobilisation & Pre-production	US\$m	23.2	
Contingency	US\$m	32.3	
Sustaining Capital Costs	US\$m	34.5	
Mine Closure Costs (excluding salvage)	US\$m	27.5	
CI Cash Costs	US\$/oz	1,317	
All-in Sustaining Costs (AISC)			
Years 1 to 5	US\$/oz	1,265	1,299
Life of Mine	US\$/oz	1,447	1,481
Financial			
Pre-Tax NPV _{5%}	US\$m	1,013	1,985
Pre-Tax IRR	%	48	75
Post-Tax NPV _{5%}	US\$m	646	1,269
Post-Tax IRR	%	38	60
Post-Tax Payback Period	Years	1.8	1.25



Contact details

Level One
130 Hay Street, Subiaco
WA 6008 Australia
Tel: +61 8 6288 4252

E: info@wiagold.com.au

Investor Relations/Media enquiries

E: WIA@buchanancomms.co.uk

