

DRILLING UNDERWAY AT AMOCO GOLD-ANTIMONY PROJECT

- **A maiden Reverse Circulation (RC) drill program is underway at Critical Resources' Amoco gold-antimony project in the Armidale region of New South Wales (NSW) – Australia.**
- The drill program consists of 12 holes for ~1,000m testing a priority geophysics and geochemical target, over a strike length of 400m.
- Amoco priority area is identified by a **+2km wide soil-geochemistry anomaly** with **rock samples of gold up to 17.9 g/t Au, antimony up to 0.7% Sb**, located on interpreted structures and is a highly encouraging target given the known mineralisation controls within the New England Fold Belt.
- Following receipt of the soil-geochemistry survey, 13 additional holes outside the approved area were submitted to the NSW Resources Regulator to be included in the current drill program to ensure the Amoco target is effectively tested.
- Amoco is located ~19km south-east of Larvotto Resources Hillgrove Antimony-Gold Project and ~14km east of the structural corridor hosting Koonenberry Gold's Enmore Gold Project.
- **Drilling is anticipated to be completed in October with assays expected in mid-November 2025.**

Critical Resources Limited ('Critical Resources' or the 'Company', ASX:CRR) is pleased to advise the commencement of the maiden Reverse Circulation (RC) drill program at the Amoco Gold-Antimony Project (**Amoco**) (100% CRR) (EL9293) in the Armidale region of New South Wales (NSW) - Australia.

The maiden Amoco RC drill program comprises of 12 holes for ~1,000m targeting a significant gold-in-soil geochemical anomaly supported by high-grade surface rock samples up to 17.9 g/t Au located on interpreted structures (**Figure 1**). The drill program is intentionally designed to systematically test the interpreted structures given the early-stage exploration at the Amoco prospect and provide geological understanding of the geochemical anomaly and potentially guide subsequent drill programs.

An additional 13 holes have been designed to target several additional geochemical/ structural targets that were identified following the receipt of the geochemistry survey which were previously unknown. These additional holes have been submitted to the NSW regulator for consideration to be included in the current drill program to effectively test the Amoco target while the drill rig is onsite.

Critical Resources' Chief Executive Officer, Mr. Tim Wither, commented *'It is exciting to commence the maiden gold-antimony drill program at Amoco and we look forward to acquiring a significant amount of geological understanding into the potential at Amoco, given the early-staged exploration phase. Amoco represents a compelling drill target within the Armidale region's rich antimony-gold production history and recent exploration success at Koonenberry Gold's Enmore Project, highlights the discovery potential. We are eager to see what this maiden drill program delivers and look forward to updating shareholders as we continue to systematically test quality targets across our diverse gold and antimony portfolio.'*

Amoco Antimony-Gold Project

The Amoco Gold-Antimony Project is located in the fertile New England fold belt ~19km southeast of Larvotto Resources Limited's (ASX:LRV) Hillgrove Antimony-Gold operations and ~14km east of Koonenberry Gold Limited's (ASX:KNB) Enmore Gold Project along regional controlling structural trends (**Figure 2**). The controlling structures are a significant geological factor within this gold-antimony rich portion of the New England Fold Belt which mineralisation typically occurs along multiple, SW-NE fault structures that can extend horizontally and vertically for hundreds of metres.

A soil geochemistry survey was undertaken across a ~3 km by ~2 km grid targeting a structurally interpreted SW-NE corridor to improve the geological understanding of the target area (ASX:CRR announcement 18 September 2025).

The soil sampling results highlight mineralised trends over a +2km strike and encouragingly aligned with the interpreted structures, delivering several robust drill targets. Previous field mapping over the priority target area at Amoco identified surface rock samples **up to 17.9 g/t Au, antimony up to 0.53% Sb, and silver up to 80 g/t Ag** (ASX:CRR announcements 8 November 2024 & 4 June 2025). These correlating geochemical and geophysics response validates the Company's geological model and underscores the potential scale of the Amoco project's mineralisation zone.

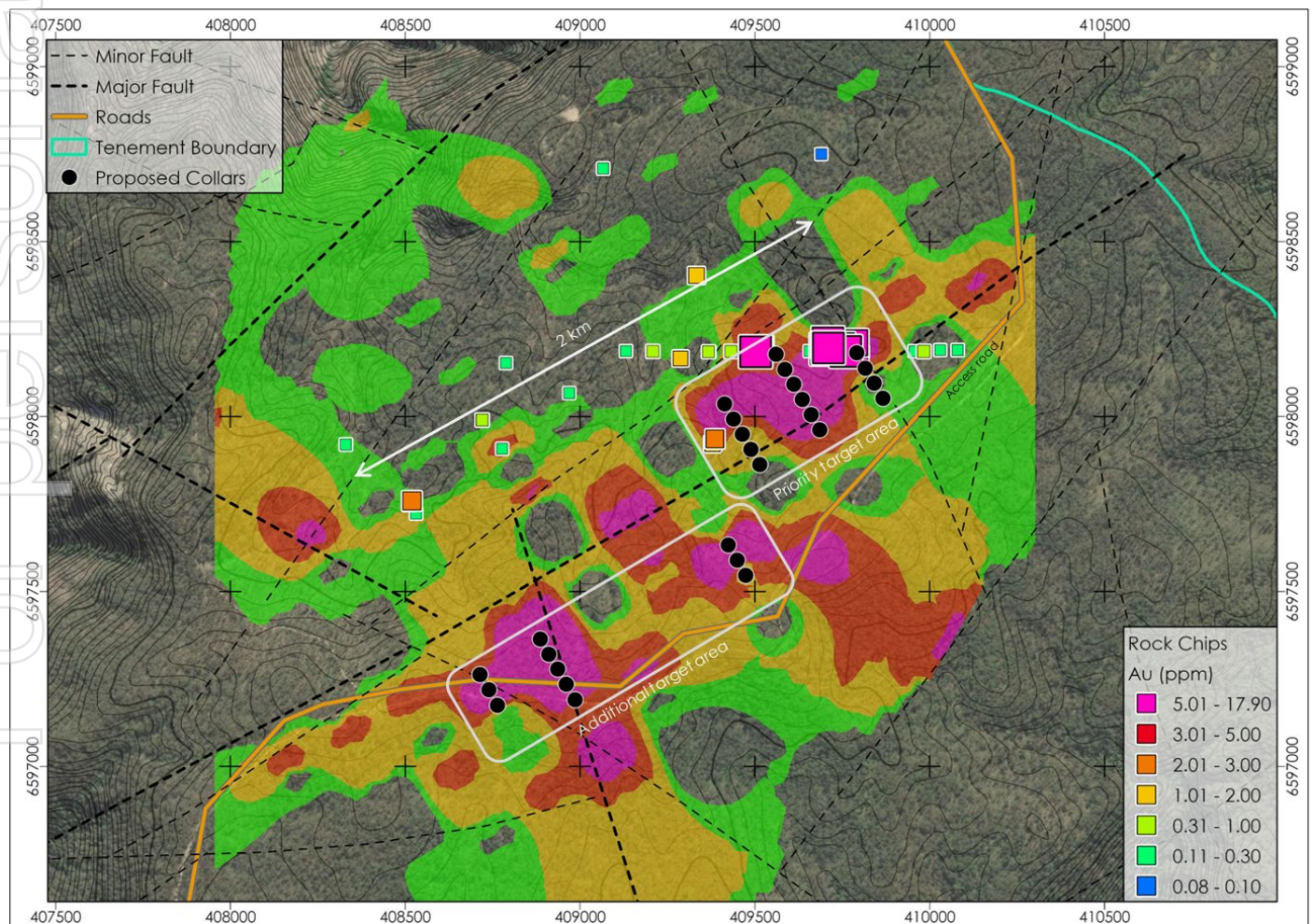


Figure 1 – Amoco maiden RC drill program with rock samples and major/minor interpreted fault structures (black dashed lines), gold-in-soil contours green (0.5-1 ppb Au) orange (1-2 ppb Au) red (2-3.5 ppb Au) and pink (3.5-21 ppb Au).

Next Steps at Amoco and NSW

The initial 12-hole drill program is expected to be completed in approximately two to three weeks and may be extended if an additional 13 holes are approval by the NSW Resource Regulator whilst the drill rig is onsite. Assay results are expected to be received from mid November 2025. Further drill programs at Amoco will be evaluated on results from this maiden drill program.

The Company continues to progress permitting and approval process for the Mayview Antimony-Gold Project with the NSW Resources Regulator and landowner, with intent to undertake low-impact soil-geochemistry survey over historic antimony workings.

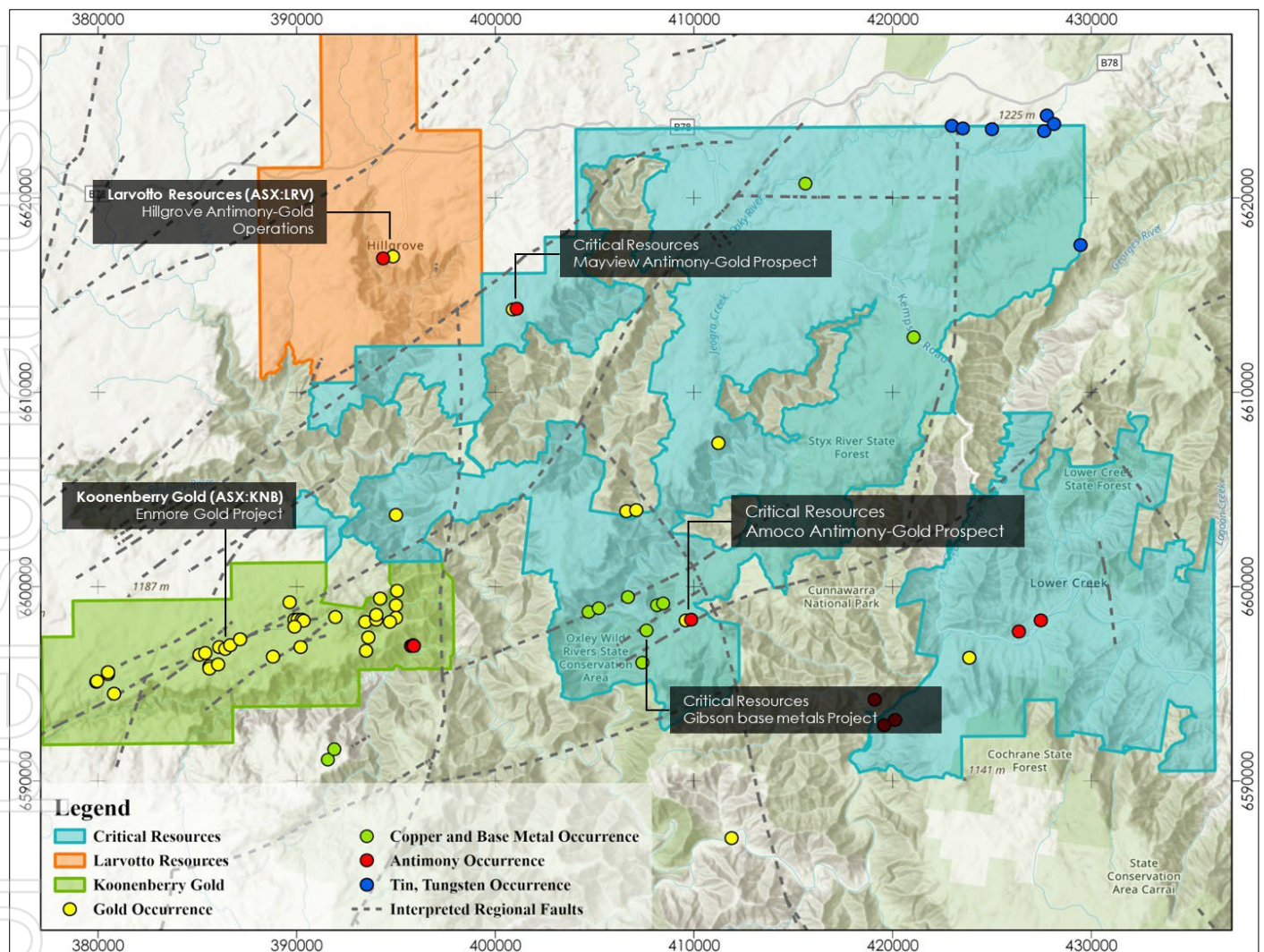


Figure 2 - Location Plan of Critical Resources - Halls Peak tenure and regionally significant Hillgrove and Enmore with regional structures.

This announcement has been approved for release by the Board of Directors of Critical Resources.

For further information, please visit www.criticalresources.com or contact:

E: info@criticalresources.com.au

P: +61 (8) 9465 1024

ABOUT CRITICAL RESOURCES LIMITED

Critical Resources Limited (ASX:CRR) is a gold-antimony-lithium explorer with assets in Canada, Australia and New Zealand. The flagship Mavis Lake Lithium Project in Ontario-Canada anchors the battery metals focus, complemented by the Halls Peak gold-antimony and base metals projects in New South Wales-Australia and gold-antimony projects centered in the Otago region – New Zealand. This diversified portfolio positions the Company to create value through critical minerals supply chain, with exposure to the rising gold market.

The Company's Mavis Lake Lithium Project, located in Ontario, Canada has defined a maiden inferred resource of 8 million tonnes at 1.07% Li₂O, with significant potential to expand this resource.

The Halls Peak Base Metals Project is located ~87km south-east of Armidale, New South Wales, Australia. The Company has defined a maiden Inferred Mineral Resource of 884,000t @ 3.7% Zn, 1.5% Pb, 0.4% Cu, 30g/t Ag and 0.1g/t Au. The Halls Peak Project area includes two advanced antimony-gold prospects – Mayview and Amoco.

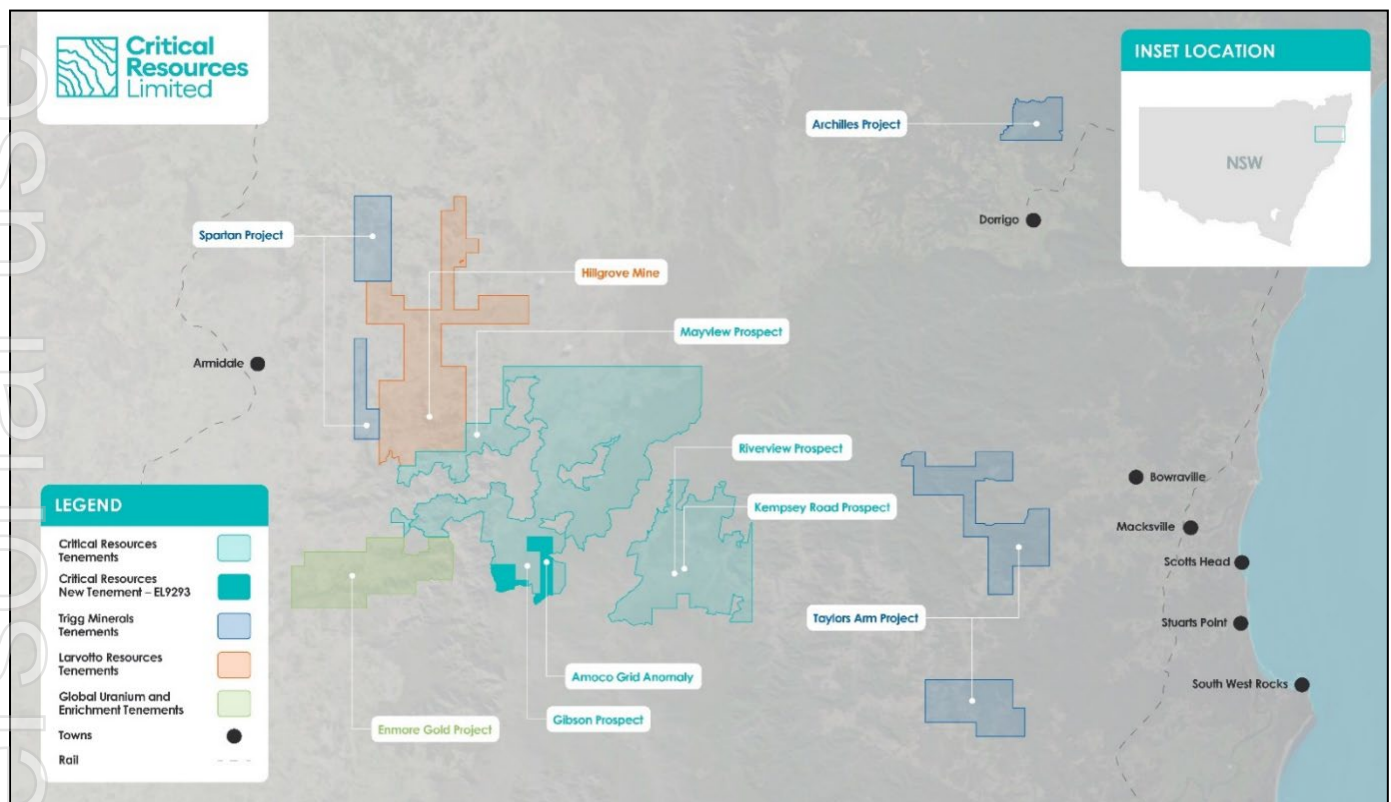


Figure 3 - Project Location map showing Halls Peak project area proximity to significant Antimony-Gold projects in the Armidale region, NSW, Australia.

Halls Peak – Gibson Base Metals Project - Mineral Resource Estimate

Halls Peak Project JORC Classification	Zn Cut-Off grade (%)	Tonnage (Mt)	Zn (%)	Pb (%)	Cu (%)	Ag ppm (g/t)	Au ppm (g/t)
Indicated	-	-	-	-	-	-	-
Inferred	2.0	0.84	3.7	1.5	0.44	30	0.1
Total*	-	0.84	3.7	1.5	0.44	30	0.1

*Reported at a cut-off grade of 2% Zn for an open pit mining scenario. Estimation for the model is from the generation of a rotated block model, with blocks dipping 55° >330°. Classification is according to the JORC Code Mineral Resource categories. Refer to the ASX:CRR announcement 30 June 2023.

Mavis Lake Lithium Project - Mineral Resource Estimate

Mavis Lake -Lithium Project JORC Classification	Li ₂ O Cut-Off grade (%)	Tonnage (Mt)	Li ₂ O (%)
Inferred	0.3	8.0	1.07
Total*		8.0	1.07

*Reported at a cut-off grade of 0.30% Li₂O for an open pit mining scenario. Estimation for the model is by inverse distance weighting. Classification is according to the JORC Code Mineral Resource categories. Refer to ASX:CRR announcement 5 May 2023.

PREVIOUSLY REPORTED INFORMATION

This document contains information relating to the Mineral Resource estimate for the Mavis Lake Lithium Project, which is extracted from the Company's ASX announcement dated 5 May 2023 and reported in accordance with the 2012 JORC Code and available for viewing at criticalresources.com.au. The Company confirms that it is not aware of any new information or data that materially affects the information included in the original announcement and that all material assumptions and technical parameters underpinning the Mineral Resource estimate continue to apply and have not materially changed.

This information in this ASX Announcement that relates to the Halls Peak Mineral Resource Estimate is extracted from the ASX market announcement dated 30 June 2023 and reported in accordance with the 2012 JORC Code and available for viewing at criticalresources.com.au. The Company confirms that it is not aware of any new information or data that materially affects the information included in any original announcement and that all material assumptions and technical parameters underpinning the estimates in the original market announcement continue to apply and have not materially changed.

This announcement contains information on the Halls Peak Project extracted from ASX market announcements dated 22 November 2021, 30 June 2023, 28 August 2024, 12 September 2024, 3 October 2024, 8 November 2024, 19 November 2024, 4 December 2024, 16 December 2024, 12 February 2025, 20 March 2025, 4 June 2025, 2 July 2025 and 18 September 2025 reported in accordance with the 2012 JORC Code and available for viewing at www.criticalresources.com.au. The Company confirms that it is not aware of any new information or data that materially affects the information included in any original ASX market announcement.

FORWARD LOOKING STATEMENTS

This announcement may contain certain forward-looking statements and projections. Such forward-looking statements/projections are estimates for discussion purposes only and should not be relied upon. Forward-looking statements/projections are inherently uncertain and may therefore differ materially from results ultimately achieved. Critical Resources Limited does not make any representations and provides no warranties concerning the accuracy of the projections and disclaims any obligation to update or revise any forward-looking statements/projections based on new information, future events or otherwise, except to the extent required by applicable laws. While the information contained in this report has been prepared in good faith, neither Critical Resources Limited or any of its directors, officers, agents, employees or advisors give any representation or warranty, express or implied, as to the fairness, accuracy, completeness or correctness of the information, opinions and conclusions contained in this announcement.