



## Positive Metallurgical Testwork Results for Van Uden Stockpiles

### Highlights

- Metallurgical testwork on composite samples taken from the gold mineralised stockpiles delivers excellent results with recoveries up to 90.7% gold achieved
- Consistent uplift in calculated head grade of the composite samples v's assayed head grade indicating coarse gold
- Testwork shows soft to medium material crushing and grinding characteristics for majority of stockpile
- Leaching tests show low lime consumption
- Very positive results to underpin future engineering studies and confirmatory testwork

TG Metals Limited (**TG Metals** or the **Company**) (ASX:TG6) is pleased to provide final results from metallurgical testwork on the mineralised stockpiles at the Van Uden Gold Project in Western Australia.

#### **TG Metals CEO, Mr. David Selfe stated;**

*"This testwork confirms the positive metallurgical characteristics of the stockpile ore to be treated at a standard Carbon in Leach (CIL) Processing Plant.*

*The full metallurgical report and testwork data will be provided to potential third party treatment facilities in the region with a view to securing a treatment pathway for the stockpiles and potentially the larger Van Uden resources.*

*The metallurgical testwork will also be used to compliment future feasibility studies for the wider Van Uden Gold Project."*

### **Gold Testwork Overview**

TG Metals engaged Independent Metallurgical Operations Pty Ltd (IMO) based in Western Australia, to conduct metallurgical testwork on sonic core samples recovered from previous mining stockpiles at the Company's Van Uden Gold project. Testwork was completed at Metallurgy Pty Ltd, a commercial laboratory located in Perth WA. The results and testwork program were overseen by independent consultant Michael Rodriguez, who has over 35 years of practical and technical experience in the mining, minerals processing, hydrometallurgical and pyrometallurgical industries.

This testwork was primarily to determine the amenability of the ore to conventional gravity concentration and cyanide leaching, in preparation for TG Metal's intended toll-treatment pathway for the Van Uden stockpiles.



A total of four (4) composites were generated utilising the sonic drill core intervals provided from the Company's drilling campaign. These intervals first underwent individual preparation to facilitate interval gold assay and selected intervals were used to form the composites. Each composite represents one of the historic stockpiles at Van Uden, namely the Tasman Mafics (TM), Tasman Sediments (TS), Dieman Laterite (DL) and Dieman Oxide (DO). Additional grab samples for each of the stockpiles was also obtained to form six (6) comminution samples for Bond Ball Index testing.

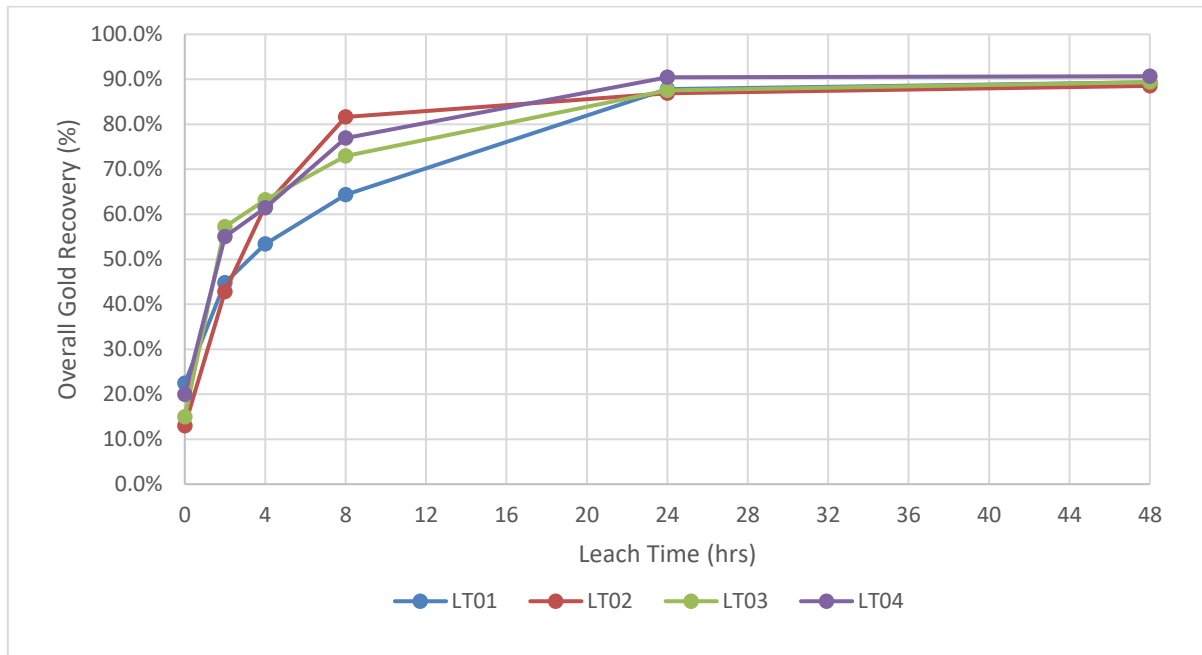
The key findings from this testwork can be summarised as follows:

- Composite assay gold head grades ranging from 0.66 g/t to 0.95 g/t;
- Overall gold recoveries ranging from 88.5% to 90.7%, with gravity gold recoveries ranging from 13.0% to 22.5%;
- Leaching appears to be completed after 24 hours for all composites, see Figure 1;
- Bond Ball Work Index Testing highlighted the following:
  - o TS stockpile was classified as medium to hard;
  - o TM stockpile was classified as soft to medium hardness;
  - o DO and DT stockpiles were both classified as very hard.

**Table 1 – Overall Gravity/Leach Results Summary**

Composite		Composite TM	Composite TS	Composite DL	Composite DO
Leach Test	#	LT01	LT02	LT03	LT04
Calculated Ore Head Grade	g/t	1.27	1.05	0.99	0.81
Assay Ore Head Grade	g/t	0.66	0.95	0.80	0.71
Gravity Recovery	%	22.5%	13.0%	15.0%	19.9%
2 Hour Overall Recovery	%	44.8%	42.8%	57.2%	55.0%
4 Hour Overall Recovery	%	53.4%	61.9%	63.2%	61.4%
8 Hour Overall Recovery	%	64.3%	81.7%	72.9%	76.9%
24 Hour Overall Recovery	%	87.8%	86.9%	87.5%	90.5%
48 Hour Overall Recovery	%	89.3%	88.5%	89.4%	90.7%
Leach Residue Grade	g/t	0.14	0.12	0.11	0.08
Gravity Gold Recovery	g/t	0.28	0.14	0.15	0.16
Leach Gold Recovery	g/t	0.85	0.79	0.73	0.57
Overall Gold Recovery	g/t	1.13	0.93	0.88	0.73
Total NaCN Cons	kg/t	0.78	0.74	0.71	0.56
Total Lime Cons	kg/t	0.25	0.72	0.55	0.00

IMO notes that improved recoveries and leach kinetics may be obtained with reduced grind size and reagent optimisation. However, IMO recommends that further optimisation work be conducted after the selection of a toll-treatment plant and specification of plant capability.



**Figure 1** - Leaching Times for all 4 Leach Tests

To avoid any bias, sample intervals were selected by IMO to form composites representing the TM, TS, DL and DO stockpiles as shown in Appendix 1, Figure 2 to Figure 4. The details of each composite can be found in Appendix 1, Table 2.

The Bond Ball Work Index testing arrived at the following results which indicate a mix of material types from Soft to Very Hard. The softest material is the Mafic Stockpile whilst the hardest is the Dieman Laterite stockpile, both of which are unsurprising.

Grab-samples from each stockpile underwent Bond Ball Work Index testing at a closing screen size of 106µm. The results, indicate the following:

- The TS stockpile reported BBWIs of 12.1 and 15.6 kWh/t, classifying the material as medium to hard;
- The TM stockpile reported BBWIs of 7.8 and 9.4 kWh/t, classifying the material as soft to medium hardness;
- The DO and DL stockpiles reported BBWIs of 20.2 and 21.9 kWh/t respectively, classifying both material types as very hard likely due to the Pisolite and Quartz content.

APPENDIX 1 – Composite Sample Locations and Intervals

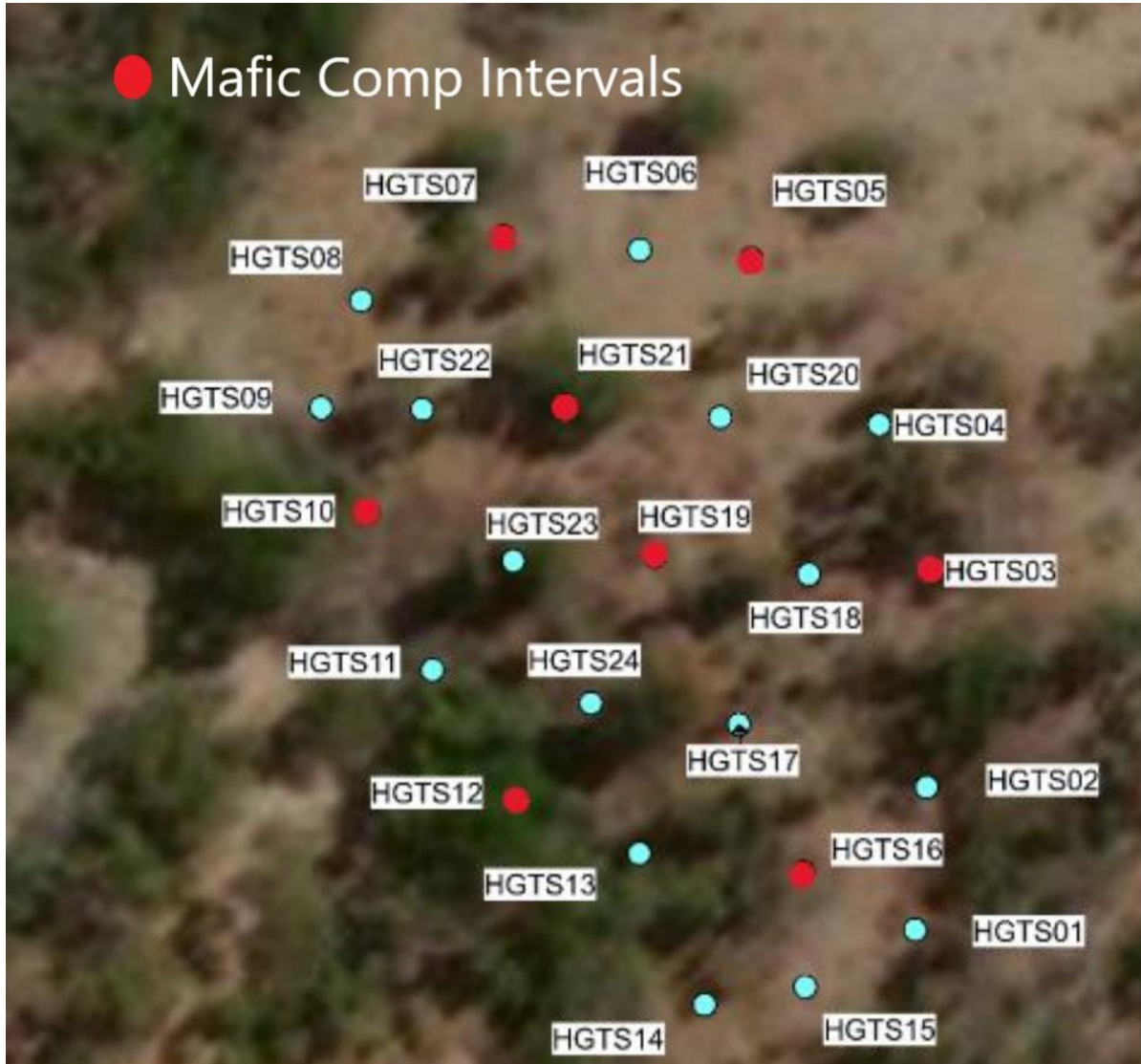


Figure 2 – Mafic Stockpile (TM) Composite Drillhole Selection

For personal use only

For personal use only

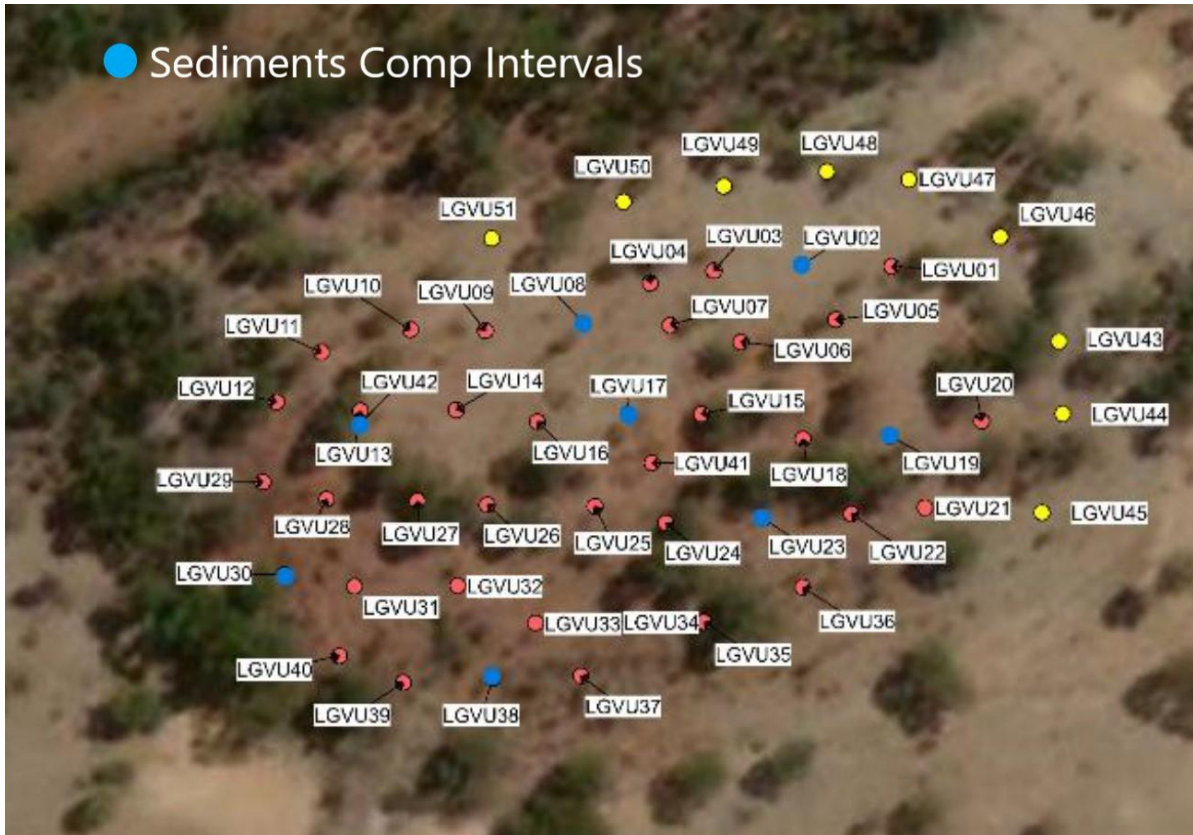


Figure 3 – Sediments Stockpile (TS) Composite Drillhole Selection

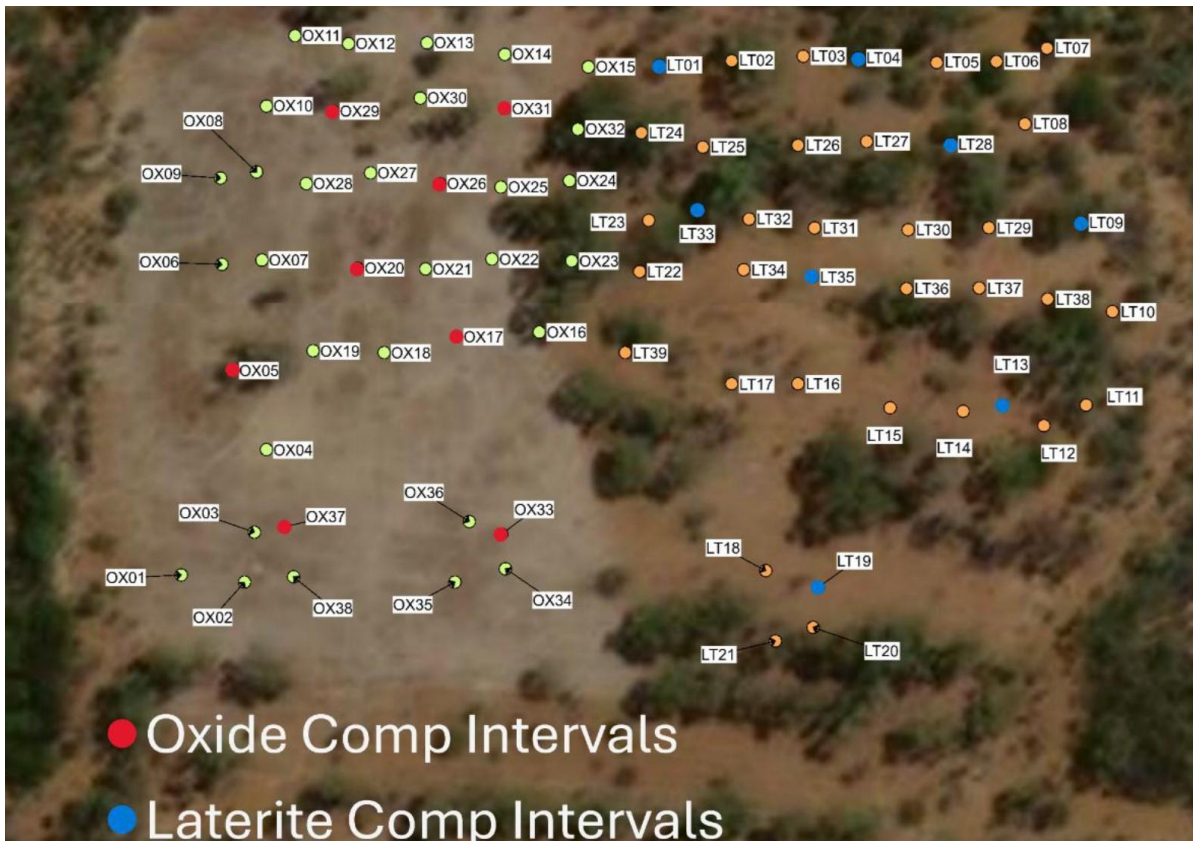


Figure 4 – Dieman Oxide (DO) and Laterite Stockpile (DL) Composite Drillhole Selection

**Table 2 – Composites taken from Sonic drill core**

Composite	Hole ID	From	To	Interval Mass	Interval Au Grade	Composite Mass	Composite Au Grade
		m	m	kg	g/t	kg	g/t
TM	HGTS03	0	4.00	15.6	0.63	141.0	0.95
	HGTS05	0	4.50	18.7	1.27		
	HGTS07	0	3.90	15.6	1.03		
	HGTS10	0	4.50	17.9	1.43		
	HGTS12	0	3.40	11.6	0.72		
	HGTS16	0	2.60	13.1	0.88		
	HGTS19	0	4.50	27.6	1.13		
	HGTS21	0	4.75	20.9	0.34		
TS	LGUV02	0	3.70	18.3	1.24	153.5	0.84
	LGUV08	0	3.79	24.6	0.82		
	LGUV17	0	4.42	24.7	0.77		
	LGUV19	0	4.95	14.1	1.59		
	LGUV23	0	4.85	26.3	0.53		
	LGUV30	0	3.70	17.3	0.80		
	LGUV38	0	2.40	8.3	0.88		
	LGUV42	0	4.40	19.9	0.43		
DL	LT01	0	1.80	11.9	0.62	115.3	0.80
	LT04	0	1.40	9.7	0.79		
	LT09	0	1.40	9.3	0.63		
	LT13	0	0.90	8.9	1.07		
	LT19	0	2.70	18.4	1.03		
	LT28	0	2.40	22.1	0.64		
	LT33	0	2.70	15.7	0.81		
	LT35	0	2.10	19.3	0.83		
DO	OX05	0	0.80	4.2	0.70	85.8	0.70
	OX17	0	1.00	3.4	1.57		
	OX20	0	1.20	6.9	0.49		
	OX26	0	2.40	10.5	0.65		
	OX29	0	2.80	13.6	0.85		
	OX31	0	2.70	13.7	0.61		
	OX33	0	2.40	16.3	0.47		
	OX37	0	2.90	17.2	0.83		

Full stockpile drilling results previously reported 21 August 2025.

**Table 3 – Collar Surveys of Metallurgical Sample Drillholes**

Hole ID	Total Depth	Easting	Easting	RL	Dip	Tenement No.
HGTS03	4.0	750186	6439425	424.3	-90	M77/478
HGTS05	5.0	750175	6439446	424.4	-90	M77/478
HGTS07	5.0	750158	6439448	424.1	-90	M77/478
HGTS10	5.0	750149	6439430	424.6	-90	M77/478
HGTS12	4.0	750158	6439411	424.2	-90	M77/478
HGTS16	3.0	750177	6439405	424.5	-90	M77/478
HGTS19	5.0	750168	6439426	424.5	-90	M77/478
HGTS20	5.0	750172	6439435	424.7	-90	M77/478
HGTS21	5.0	750162	6439436	424.6	-90	M77/478
LGVU02	3.8	750072	6439347	427.4	-90	M77/478
LGVU08	4.0	750047	6439341	428.2	-90	M77/478
LGVU17	4.5	750052	6439331	428.3	-90	M77/478
LGVU19	5.5	750081	6439328	427.6	-90	M77/478
LGVU23	5.0	750067	6439319	427.8	-90	M77/478
LGVU24	5.0	750056	6439319	428.3	-90	M77/478
LGVU30	4.0	750013	6439314	428.5	-90	M77/478
LGVU38	4.0	750036	6439302	428.2	-90	M77/478
LGVU42	5.0	750022	6439331	428.5	-90	M77/478
LT01	2.0	749462	6440092	426.4	-90	M77/477
LT04	2.0	749487	6440092	427.0	-90	M77/477
LT09	1.5	749514	6440071	425.9	-90	M77/477
LT13	1.0	749504	6440048	425.5	-90	M77/477
LT19	2.9	749480	6440026	423.8	-90	M77/477
LT28	3.0	749498	6440081	427.5	-90	M77/477
LT33	2.8	749466	6440073	427.2	-90	M77/477
LT35	2.2	749480	6440065	426.9	-90	M77/477
OX05	1.0	749408	6440055	424.0	-90	M77/477
OX17	1.0	749436	6440058	424.9	-90	M77/477
OX20	1.7	749424	6440067	425.3	-90	M77/477
OX26	2.6	749434	6440077	426.7	-90	M77/477
OX29	3.0	749421	6440087	427.0	-90	M77/477
OX31	2.8	749442	6440087	427.2	-90	M77/477
OX33	2.5	749441	6440034	423.6	-90	M77/477
OX37	3.0	749414	6440035	423.4	-90	M77/477

For personal use only



## Next Steps

The full metallurgical report will be made available to potential third party treatment suppliers in the region in continued discussions on toll treatment/ore purchase opportunities.

Further optimisation testwork is planned to achieve improved overall gold recoveries as recommended by IMO.

Drilling continues at pace on the Van Uden resource expansion, Tasman in-pit and at Gold City exploration. Results from these three key drilling areas are expected to start returning later in October.

Site works continue in preparation for further drilling campaigns including diamond core drilling and for haulage of stockpiles offsite once a suitable treatment agreement is executed.

For personal use only



**About TG Metals**

TG Metals is an ASX listed company focused on exploring and developing gold and lithium assets at its wholly owned Lake Johnston Project and 80% owned Van Uden Gold Project in the stable jurisdiction of Western Australia. The Lake Johnston Project hosts the Burmeister high grade lithium deposit, Jaegermeister lithium pegmatites and several surrounding lithium prospects. Burmeister is in proximity to four lithium processing plants and undeveloped deposits. The Van Uden Gold Project contains past producing gold mines and is in proximity to operating gold processing Plants, see Figure 5 below.

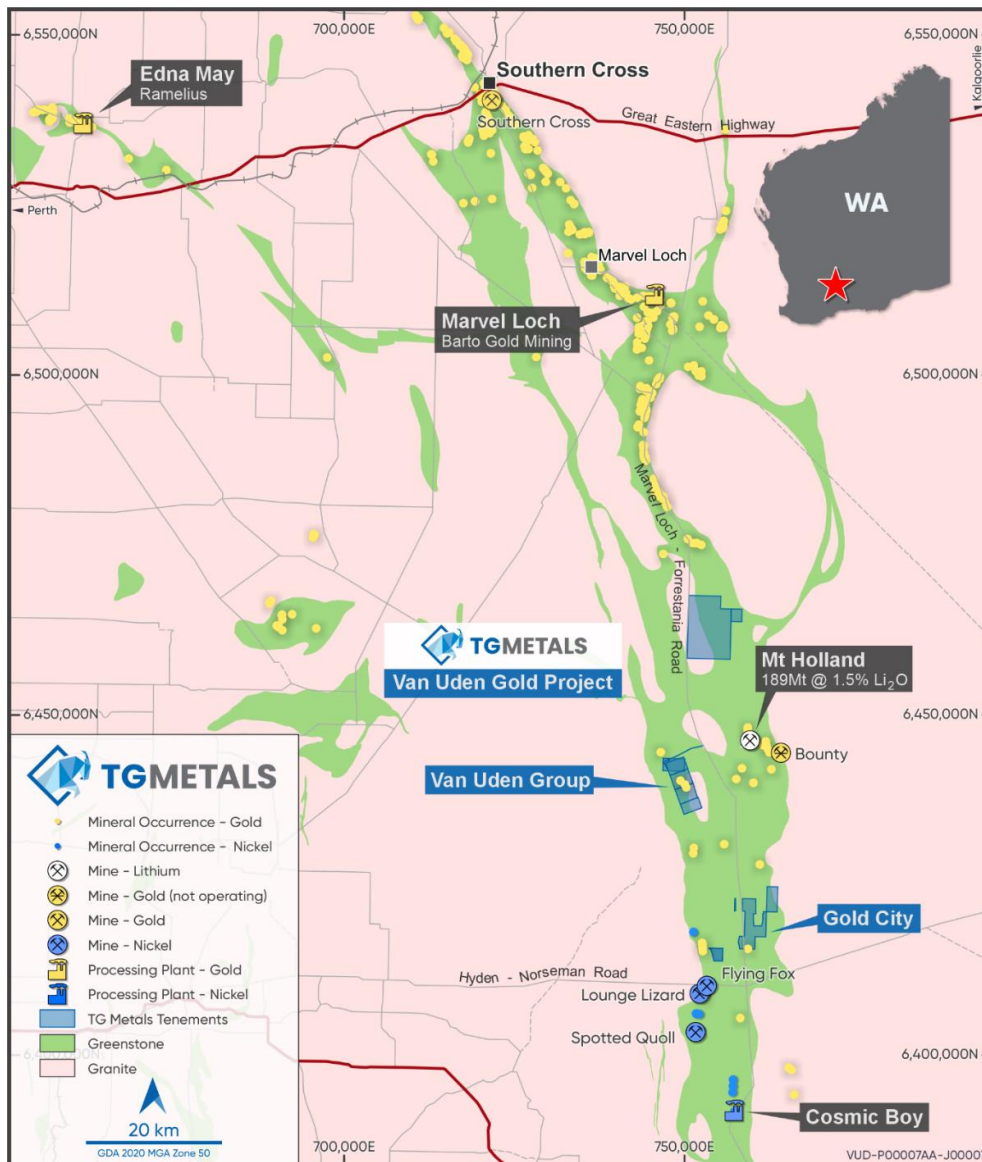
**Authorised for release by TG Metals Board of Directors.**

**Contact**

Mr David Selfe  
 Chief Executive Officer  
 Email: [info@tgmets.com.au](mailto:info@tgmets.com.au)

**Investor Relations**

Evy Litopoulous  
 ResolveIR  
 Email: [evy@resolveir.com](mailto:evy@resolveir.com)



**Figure 5 – Location Map showing TG Metals' Van Uden Gold Project**

For personal use only



## Competent Person Statement

Information in this announcement that relates to exploration results, exploration strategy, exploration targets, geology, drilling and mineralisation is based on information compiled by Mr David Selfe who is a Fellow of the Australasian Institute of Mining and Metallurgy. Mr Selfe has sufficient experience that is relevant to the style of mineralisation and type of deposit under consideration and to the activities that he is undertaking to qualify as a Competent Person as defined in the 2012 Edition of the Australasian Code for Reporting of Exploration Results, Mineral Resources and Ore Reserves. Mr Selfe has consented to the inclusion in this report of matters based on their information in the form and context in which it appears.

Information in this announcement that relates to metallurgical results, is based on information compiled by Mr David Selfe and has been reviewed by Mr Michael Rodriguez who is a Fellow of the Australasian Institute of Mining and Metallurgy. Mr Rodriguez has sufficient experience that is relevant to the style of mineralisation and type of deposit under consideration and to the activities that he is undertaking to qualify as a Competent Person as defined in the 2012 Edition of the Australasian Code for Reporting of Metallurgical Results. Mr Rodriguez has consented to the inclusion in this report of matters based on their information in the form and context in which it appears.

## Forward Looking Statements

This announcement may contain certain statements that may constitute “forward looking statements”. Such statements are only predictions and are subject to inherent risks and uncertainties, which could cause actual values, results, performance achievements to differ materially from those expressed, implied or projected in any forward looking statements.

Forward-looking statements are statements that are not historical facts. Words such as “expect(s)”, “feel(s)”, “believe(s)”, “will”, “may”, “anticipate(s)” and similar expressions are intended to identify forward-looking statements. These statements include, but are not limited to statements regarding future production, resources or reserves and exploration results. All such statements are subject to certain risks and uncertainties, many of which are difficult to predict and generally beyond the control of the Company, that could cause actual results to differ materially from those expressed in, or implied or projected by, the forward-looking information and statements. These risks and uncertainties include, but are not limited to: (i) those relating to the interpretation of drill results, the geology, grade and continuity of mineral deposits and conclusions of economic evaluations, (ii) risks relating to possible variations in reserves, grade, planned mining dilution and ore loss, or recovery rates and changes in project parameters as plans continue to be refined, (iii) the potential for delays in exploration or development activities or the completion of feasibility studies, (iv) risks related to commodity price and foreign exchange rate fluctuations, (v) risks related to failure to obtain adequate financing on a timely basis and on acceptable terms or delays in obtaining governmental approvals or in the completion of development or construction activities, and (vi) other risks and uncertainties related to the Company’s prospects, properties and business strategy. Our audience is cautioned not to place undue reliance on these forward-looking statements that speak only as of the date hereof, and we do not undertake any obligation to revise and disseminate forward-looking statements to reflect events or circumstances after the date hereof, or to reflect the occurrence of or non-occurrence of any events.

The Company believes that it has a reasonable basis for making the forward-looking Statements in the presentation based on the information contained in this and previous ASX announcements.

The Company is not aware of any new information or data that materially affects the information included in this ASX release, and the Company confirms that, to the best of its knowledge, all material assumptions and technical parameters underpinning the exploration results in this release continue to apply and have not materially changed.

# JORC Code, 2012 Edition – Table 1

## Section 1 Sampling Techniques and Data

(Criteria in this section apply to all succeeding sections.)

Criteria	JORC Code explanation	Commentary
Sampling techniques	<ul style="list-style-type: none"> <li>Nature and quality of sampling (eg cut channels, random chips, or specific specialised industry standard measurement tools appropriate to the minerals under investigation, such as down hole gamma sondes, or handheld XRF instruments, etc). These examples should not be taken as limiting the broad meaning of sampling.</li> <li>Include reference to measures taken to ensure sample representivity and the appropriate calibration of any measurement tools or systems used.</li> <li>Aspects of the determination of mineralisation that are Material to the Public Report.</li> <li>In cases where 'industry standard' work has been done this would be relatively simple (eg 'reverse circulation drilling was used to obtain 1 m samples from which 3 kg was pulverised to produce a 30 g charge for fire assay'). In other cases more explanation may be required, such as where there is coarse gold that has inherent sampling problems. Unusual commodities or mineralisation types (eg submarine nodules) may warrant disclosure of detailed information.</li> </ul>	<ul style="list-style-type: none"> <li>Sonic drilling was used to obtain continuous 4" diameter core from surface stockpiles. Samples were collected into sealed plastic sleeves to preserve in-situ moisture and laid into PQ trays. All samples were transported to Independent Metallurgical Operations (IMO) in Welshpool, Perth. Samples were weighed "as received," then dried and reweighed. Split sub-samples were created for duplicate gold assay using 30g fire assay.</li> <li>Samples for Comminution* testwork were obtained from grab samples of coarse material from each of the four stockpiles. The technique used was random grab into 9 litre buckets from the sides of the stockpiles and the tops of the stockpiles.</li> </ul> <p><b>Metallurgical Testwork Sampling</b></p> <ul style="list-style-type: none"> <li>Sonic drill core was selected for inclusion in four composite samples- at Metallurgy Pty Ltd in Welshpool. All testwork was managed by Independent Metallurgical Operations Pty Ltd (IMO).</li> <li>The four composites were dominated by individual stockpile, being the TM, TS, DO and DL stockpiles, all with different dominant material types.</li> <li>Table 2 in the body text defines the components of the 4 composite samples generated from the Sonic core across the four stockpiles.</li> </ul> <p><u>Testwork Stages</u></p> <p>Stage 1: Drill Interval Preparation &amp; Analysis</p> <ul style="list-style-type: none"> <li>Inventory of Sonic Drill intervals</li> <li>Interval preparation and splitting for assay</li> <li>Moisture &amp; Density analysis on selected intervals</li> <li>Duplicate gold interval assays</li> </ul> <p>Stage 2: Gravity &amp; Leach Testwork</p> <ul style="list-style-type: none"> <li>Generation of Composites</li> </ul>

Criteria	JORC Code explanation	Commentary
		<ul style="list-style-type: none"> <li>○ Comprehensive Head Assay</li> <li>○ Head Sizing Analysis</li> <li>○ Gravity Concentration &amp; Intensive Leach</li> <li>○ Cyanide Leach Test</li> </ul> <p>Additional Comminution Testwork</p> <ul style="list-style-type: none"> <li>○ Bond Ball Work Index on stockpile grab-samples*</li> </ul> <p>This report details results from Stage 2 including the additional Comminution testwork.</p> <p><u>Gravity and Leach Testwork</u></p> <p>Head Assay -</p> <p>Sub-splits of the -2mm composites were pulverised and submitted to SGS Australia Laboratory for the following analysis:</p> <ul style="list-style-type: none"> <li>○ Duplicate 50 g fire assay;</li> <li>○ Four acid digest – ICP/OES+MS;</li> <li>○ Carbon, Sulphur and Copper Speciation.</li> </ul> <p>Size by Size Analysis -</p> <p>Size by size assay analysis was undertaken on the 2mm crushed material of each composite. The stage gold grades and cumulative gold distributions for each composite were calculated. Gold distribution generally follows the mass throughout the samples, indicating no opportunity for scalp screening/pretreatment prior to leaching.</p> <p><u>Gravity Concentration</u></p> <p>Gravity recoverable gold analysis was undertaken on all four composites prior to cyanide leach testing. a 15 kg sub split of the composites were ground to 80% passing 300 µm and passed as a single pass through a 3” standard Knelson concentrator. The Knelson concentrate was subsequently intensively leached, emulating industry standard gravity concentrate leach conditions. Following gravity concentration, the Knelson tails and intensive leach residues were recombined and split into 1 kg charges for cyanide leaching.</p>

Criteria	JORC Code explanation	Commentary														
		<p><u>Cyanide Leach</u> The combined gravity tailings from each composite underwent a conventional cyanide leach test, conducted at the following conditions:</p> <ul style="list-style-type: none"> <li>• 1 kg solids;</li> <li>• P80 106 µm;</li> <li>• 40% solids in Perth tap water;</li> <li>• 500 ppm NaCN initial, maintained at 300 ppm;</li> <li>• Dissolved oxygen maintained between 8-10 mg/L by air addition;</li> <li>• pH maintained at 9.5-10 with lime;</li> <li>• Monitoring at 2, 4, 8, 24 and 48 hours.</li> </ul> <p><u>Bond Ball Work Index</u> Separate from the composites discussed above, six (6) grab-samples were taken from the Van Uden stockpiles, as shown in the Table below.</p> <table border="1" data-bbox="1249 667 1908 986"> <thead> <tr> <th>BBWi Sample ID</th> <th>Mass (kg)</th> </tr> </thead> <tbody> <tr> <td>HG Northside</td> <td>38.2</td> </tr> <tr> <td>HG Southside</td> <td>34.8</td> </tr> <tr> <td>Heap Leach Laterite</td> <td>41.2</td> </tr> <tr> <td>LG Eastside</td> <td>37.3</td> </tr> <tr> <td>LG Westside</td> <td>35.2</td> </tr> <tr> <td>Heap Leach Oxide</td> <td>38.3</td> </tr> </tbody> </table> <p>Each of these grab-samples underwent Bond Ball Work Index testing at a closing screen size of 106µm.</p>	BBWi Sample ID	Mass (kg)	HG Northside	38.2	HG Southside	34.8	Heap Leach Laterite	41.2	LG Eastside	37.3	LG Westside	35.2	Heap Leach Oxide	38.3
BBWi Sample ID	Mass (kg)															
HG Northside	38.2															
HG Southside	34.8															
Heap Leach Laterite	41.2															
LG Eastside	37.3															
LG Westside	35.2															
Heap Leach Oxide	38.3															
<i>Drilling techniques</i>	<ul style="list-style-type: none"> <li>• <i>Drill type (eg core, reverse circulation, open-hole hammer, rotary air blast, auger, Bangka, sonic, etc) and details (eg core diameter, triple or standard tube, depth of diamond tails, face-sampling bit or other type, whether core is oriented and if so, by what method, etc).</i></li> </ul>	<ul style="list-style-type: none"> <li>• Sonic drilling was conducted using a GeoSonic EP26 66Hz rig with 4" tooling. All holes were vertical and drilled until base or near base of stockpiles.</li> </ul>														
<i>Drill sample recovery</i>	<ul style="list-style-type: none"> <li>• <i>Method of recording and assessing core and chip sample recoveries and results assessed.</i></li> <li>• <i>Measures taken to maximise sample recovery and ensure representative nature of the samples.</i></li> <li>• <i>Whether a relationship exists between sample recovery and grade and whether sample bias may have occurred due to preferential loss/gain of fine/coarse material.</i></li> </ul>	<ul style="list-style-type: none"> <li>• Considered very high due to sonic sampling performance. All recovery was assessed through dry and as-received mass comparison at IMO.</li> <li>• Stock material has variations in compaction/settling as well as being recently moved during earthworks to make the area suitable for drilling.</li> </ul>														

Criteria	JORC Code explanation	Commentary
Logging	<ul style="list-style-type: none"> <li>• Whether core and chip samples have been geologically and geotechnically logged to a level of detail to support appropriate Mineral Resource estimation, mining studies and metallurgical studies.</li> <li>• Whether logging is qualitative or quantitative in nature. Core (or costean, channel, etc) photography.</li> <li>• The total length and percentage of the relevant intersections logged.</li> </ul>	<ul style="list-style-type: none"> <li>• No formal geological logging was performed. Each hole was categorised based on visual identification of stockpile material, soil, or saprolite to identify the transition from dump to in-situ ground.</li> </ul>
Sub-sampling techniques and sample preparation	<ul style="list-style-type: none"> <li>• If core, whether cut or sawn and whether quarter, half or all core taken.</li> <li>• If non-core, whether riffled, tube sampled, rotary split, etc and whether sampled wet or dry.</li> <li>• For all sample types, the nature, quality and appropriateness of the sample preparation technique.</li> <li>• Quality control procedures adopted for all sub-sampling stages to maximise representivity of samples.</li> <li>• Measures taken to ensure that the sampling is representative of the in situ material collected, including for instance results for field duplicate/second-half sampling.</li> <li>• Whether sample sizes are appropriate to the grain size of the material being sampled.</li> </ul>	<ul style="list-style-type: none"> <li>• Samples were dried, weighed, and split at IMO to produce original and duplicate sub-samples. Sonic run length dictated the sampling interval, which was typically 1m where possible.</li> </ul>
Quality of assay data and laboratory tests	<ul style="list-style-type: none"> <li>• The nature, quality and appropriateness of the assaying and laboratory procedures used and whether the technique is considered partial or total.</li> <li>• For geophysical tools, spectrometers, handheld XRF instruments, etc, the parameters used in determining the analysis including instrument make and model, reading times, calibrations factors applied and their derivation, etc.</li> <li>• Nature of quality control procedures adopted (eg standards, blanks, duplicates, external laboratory checks) and whether acceptable levels of accuracy (ie lack of bias) and precision have been established.</li> </ul>	<ul style="list-style-type: none"> <li>• All assays were conducted at SGS Laboratories using 30g Fire Assay for gold. Duplicates were generated by physical splitting, and both original and duplicate samples were analysed. No field standards or blanks were inserted due to metallurgical scope and internal QAQC at the lab.</li> </ul>
Verification of sampling and assaying	<ul style="list-style-type: none"> <li>• The verification of significant intersections by either independent or alternative company personnel.</li> <li>• The use of twinned holes.</li> <li>• Documentation of primary data, data entry procedures, data verification, data storage (physical and electronic) protocols.</li> <li>• Discuss any adjustment to assay data.</li> </ul>	<ul style="list-style-type: none"> <li>• Sample data was verified by TG Metals personnel. LGVU42 was drilled to replace LGVU13, which failed to penetrate sufficiently. Variability between some intervals suggests a moderate nugget effect, which has been mitigated through increased sampling volume and mass-based averaging.</li> </ul>

Criteria	JORC Code explanation	Commentary
Location of data points	<ul style="list-style-type: none"> <li>Accuracy and quality of surveys used to locate drill holes (collar and down-hole surveys), trenches, mine workings and other locations used in Mineral Resource estimation.</li> <li>Specification of the grid system used.</li> <li>Quality and adequacy of topographic control.</li> </ul>	<ul style="list-style-type: none"> <li>All collar positions were collected using handheld GPS. Stockpiles are surface landforms, Post drilling a LiDAR survey was undertaken allowing RL's to be determined accurately.</li> </ul>
Data spacing and distribution	<ul style="list-style-type: none"> <li>Data spacing for reporting of Exploration Results.</li> <li>Whether the data spacing and distribution is sufficient to establish the degree of geological and grade continuity appropriate for the Mineral Resource and Ore Reserve estimation procedure(s) and classifications applied.</li> <li>Whether sample compositing has been applied.</li> </ul>	<ul style="list-style-type: none"> <li>Drilling was conducted in a 5–20m grid pattern across each dump. 464 sample intervals were generated. Mass-weighted averaging was used to reduce bias caused by compaction variability.</li> </ul>
Orientation of data in relation to geological structure	<ul style="list-style-type: none"> <li>Whether the orientation of sampling achieves unbiased sampling of possible structures and the extent to which this is known, considering the deposit type.</li> <li>If the relationship between the drilling orientation and the orientation of key mineralised structures is considered to have introduced a sampling bias, this should be assessed and reported if material.</li> </ul>	<ul style="list-style-type: none"> <li>Not applicable. All stockpiles are anthropogenic with sub-horizontal geometry. All holes were vertical.</li> </ul>
Sample security	<ul style="list-style-type: none"> <li>The measures taken to ensure sample security.</li> </ul>	<ul style="list-style-type: none"> <li>Samples were bagged, steel-strapped to pallets on-site, and trucked directly to IMO in Welshpool. Chain of custody was maintained by TG Metals personnel.</li> </ul>
Audits or reviews	<ul style="list-style-type: none"> <li>The results of any audits or reviews of sampling techniques and data.</li> </ul>	<ul style="list-style-type: none"> <li>No independent audits have been conducted at this stage. Results and procedures are under internal review.</li> </ul>

## Section 2 Reporting of Exploration Results

(Criteria listed in the preceding section also apply to this section.)

Criteria	JORC Code explanation	Commentary
Mineral tenement and land tenure status	<ul style="list-style-type: none"> <li>Type, reference name/number, location and ownership including agreements or material issues with third parties such as joint ventures, partnerships, overriding royalties, native title interests, historical sites, wilderness or national park and environmental settings.</li> <li>The security of the tenure held at the time of reporting along with any</li> </ul>	<ul style="list-style-type: none"> <li>Tenements <b>M77/478</b>, <b>M77/477</b> are located in Western Australia.</li> <li><b>Ownership:</b> TG Metals acquiring 80% ownership of the Mining and Exploration tenements from Montague Resources Australia Pty Ltd. TG Metals acquiring 100% Ownership of Miscellaneous licences.</li> <li>The tenements are granted and in good standing.</li> </ul>

Criteria	JORC Code explanation	Commentary
	<i>known impediments to obtaining a licence to operate in the area.</i>	
Exploration done by other parties	<ul style="list-style-type: none"> <li>• <i>Acknowledgment and appraisal of exploration by other parties.</i></li> </ul>	<ul style="list-style-type: none"> <li>• Historical exploration by Reynolds Australia, PacMin Mining Corporation, Convergent Minerals, Viceroy Australia Pty Ltd, Forrestania Gold NL, Sons of Gwalia Limited, St Barbara Mines Limited, Montague Resources Australia Pty Ltd, Kidman Resources Limited, Tianye SXO Gold Mining Pty Ltd, and MH Gold Ltd.</li> <li>• Data has been obtained from WAMEX Open File reports.</li> </ul>
Geology	<ul style="list-style-type: none"> <li>• <i>Deposit type, geological setting and style of mineralisation.</i></li> </ul>	<ul style="list-style-type: none"> <li>• Hosted within the Southern Cross Greenstone Belt.</li> <li>• Gold mineralisation is structurally controlled, occurring along shear zones and in quartz veins.</li> <li>• The geological structure had previously been interpreted as a shallowly eastward dipping system associated with a generally NNW striking contact zone.</li> <li>• Previously mined material concentrated on Oxide and Lateritic ore.</li> </ul>
Drill hole Information	<ul style="list-style-type: none"> <li>• <i>A summary of all information material to the understanding of the exploration results including a tabulation of the following information for all Material drill holes:</i> <ul style="list-style-type: none"> <li>○ <i>easting and northing of the drill hole collar</i></li> <li>○ <i>elevation or RL (Reduced Level – elevation above sea level in metres) of the drill hole collar</i></li> <li>○ <i>dip and azimuth of the hole</i></li> <li>○ <i>down hole length and interception depth</i></li> <li>○ <i>hole length.</i></li> </ul> </li> <li>• <i>If the exclusion of this information is justified on the basis that the information is not Material and this exclusion does not detract from the understanding of the report, the Competent Person should clearly explain why this is the case.</i></li> </ul>	<ul style="list-style-type: none"> <li>• Relevant tables have been included in appendices of the release</li> <li>• Total of 152 vertical holes for 464 m drilling. Intercepts dictated by sonic run (~1 m intervals). Full results previously released 21 August 2025.</li> </ul>
Data aggregation methods	<ul style="list-style-type: none"> <li>• <i>In reporting Exploration Results, weighting averaging techniques, maximum and/or minimum grade truncations (eg cutting of high grades) and cut-off grades are usually Material and should be stated.</i></li> <li>• <i>Where aggregate intercepts incorporate short lengths of high grade results and longer lengths of low grade results, the procedure used for such aggregation should be stated and some typical examples of such aggregations should be shown in detail.</i></li> <li>• <i>The assumptions used for any reporting of metal equivalent values should be clearly stated.</i></li> </ul>	<ul style="list-style-type: none"> <li>• Duplicate assay averages used. Domain-level grades calculated using mass-weighted averaging to reduce bias from compaction variability; no top-cutting.</li> </ul>

Criteria	JORC Code explanation	Commentary
<i>Relationship between mineralisation widths and intercept lengths</i>	<ul style="list-style-type: none"> <li>• <i>These relationships are particularly important in the reporting of Exploration Results.</i></li> <li>• <i>If the geometry of the mineralisation with respect to the drill hole angle is known, its nature should be reported.</i></li> <li>• <i>If it is not known and only the down hole lengths are reported, there should be a clear statement to this effect (eg 'down hole length, true width not known').</i></li> </ul>	<ul style="list-style-type: none"> <li>• Drill holes vertical into sub-horizontal dumps—intercepts represent true thickness.</li> </ul>
<i>Diagrams</i>	<ul style="list-style-type: none"> <li>• <i>Appropriate maps and sections (with scales) and tabulations of intercepts should be included for any significant discovery being reported. These should include, but not be limited to a plan view of drill hole collar locations and appropriate sectional views.</i></li> </ul>	<ul style="list-style-type: none"> <li>• Maps, diagrams included in the body text.</li> </ul>
<i>Balanced reporting</i>	<ul style="list-style-type: none"> <li>• <i>Where comprehensive reporting of all Exploration Results is not practicable, representative reporting of both low and high grades and/or widths should be practiced to avoid misleading reporting of Exploration Results.</i></li> </ul>	<ul style="list-style-type: none"> <li>• All assay data released as received;</li> </ul>
<i>Other substantive exploration data</i>	<ul style="list-style-type: none"> <li>• <i>Other exploration data, if meaningful and material, should be reported including (but not limited to): geological observations; geophysical survey results; geochemical survey results; bulk samples – size and method of treatment; metallurgical test results; bulk density, groundwater, geotechnical and rock characteristics; potential deleterious or contaminating substances.</i></li> </ul>	<ul style="list-style-type: none"> <li>• Specific gravity values have been taken from TG Metals' 5 June 2025 resource report. Due to the variable nature of stockpile compaction and recent rehandling of some dumps, different bulking factors have been applied. The LG stockpile was recently reworked extensively, and a 20% bulking factor has been applied to its base SG of 1.80 (yielding 1.44). The HG, OX, and LT dumps have remained largely undisturbed for ~30 years and have undergone natural compaction. A 15% bulking factor has been applied to their respective base SGs (HGTS: 2.40 → 2.04, OX: 2.10 → 1.79, LT: 2.50 → 2.13). These adjustments reflect the physical state of the dumps and are appropriate for preliminary tonnage assessments.</li> <li>• Volumes were estimated using a DGPS surface survey of the stockpiles conducted by Navais Australia Pty Ltd. Surveyed RLs were used to generate a digital terrain model (DTM) of each dump surface. A flat base was assumed at the approximate toe elevation along the dump edges to define the base of the material. This approach provides a practical and conservative volume estimate appropriate for unconsolidated stockpiles.</li> </ul>
<i>Further work</i>	<ul style="list-style-type: none"> <li>• <i>The nature and scale of planned further work (eg tests for lateral extensions or depth extensions or large-scale step-out drilling).</i></li> <li>• <i>Diagrams clearly highlighting the areas of possible extensions, including the main geological interpretations and future drilling areas, provided this information is not commercially sensitive.</i></li> </ul>	<ul style="list-style-type: none"> <li>• The stockpiles have been thoroughly tested for suitability as feed for third-party carbon in leach (CIL) processing plants. Sonic Core sample is retained for further refinement tests as recommended by IMO and for future alternative processing methods.</li> </ul>