

Fieldwork Commences at Catalyst Ridge REE - Antimony Project

Great Northern Minerals Ltd (ASX: GNM or the Company) is pleased to announce that fieldwork has commenced at the Catalyst Ridge Project (Catalyst Ridge or the Project). Fieldwork for the comprehensive sampling and mapping program is expected to take three weeks led by GNM's USA-based geological experts, Greg Schiffrin and senior geologist Robert Kell.

HIGHLIGHTS:

- Initial fieldwork has commenced at the Catalyst Ridge Project and is expected to be finished within three weeks.
- Exploration will be focused on sediment stream and rock chip sampling, and includes reconnaissance mapping led by handheld X-ray fluorescence (XRF) readings.
- Samples to be sent to American Analytical Services in Idaho, with assay results expected within two weeks from submission.
- GNM representatives attended the Rare Earth Mines, Magnets and Motors conference in Toronto.

Non-Executive Chairman, Eddie King, commented: *"The commencement of fieldwork at Catalyst Ridge is a major step toward unlocking the Project's value. This program is focused on validating surface mineralisation and collecting key data to guide our next phase of exploration.*

Being on site this week reinforced the Project's strategic importance—not only geologically, but also in its potential to support the domestic supply of U.S. critical minerals, particularly Rare Earth Elements and Antimony, which are essential for U.S. national security and advanced technologies."



Figure 1: Field crews mobilised on site.



Figure 2: Field crews commencing sampling program.

For personal use only



Figure 3: Looking south from Catalyst Ridge claim area.



Figure 4: GNM team with USA-based experts, Greg Schifrin and Robert Kell.

For personal use only



Figure 5: GNM team with field crew.



Figure 6: Looking east from target area three with Solar PV farm in the background.

For personal use only



Figure 7: MP Materials Mountain Pass Rare Earths mine.



Figure 8: GMM representatives at the Rare Earth Mines, Magnets and Motors conference in Toronto.

For personal use only

Next Steps

Following the completion of initial fieldwork at Catalyst Ridge, samples will be submitted to American Analytical Services in Idaho for assay. Results are expected within approximately two weeks of submission.

Upon receipt of results, GNM will undertake a detailed analysis of the geochemical data to define priority exploration targets. Subject to assay outcomes, the Company will advance to the next phase of exploration, which will include detailed geological mapping, targeted surface sampling, followed by focused drilling to further assess the mineralisation potential.

Other Corporate Activities

Representatives of the Company attended the Rare Earth Mines, Magnets & Motors 2025 conference in Toronto. The event brought together global rare earth miners, magnet producers and motor manufacturers, providing the Company with valuable insights and opportunities to engage with potential industry partners and stakeholders across the international rare earth supply chain.

For personal use only

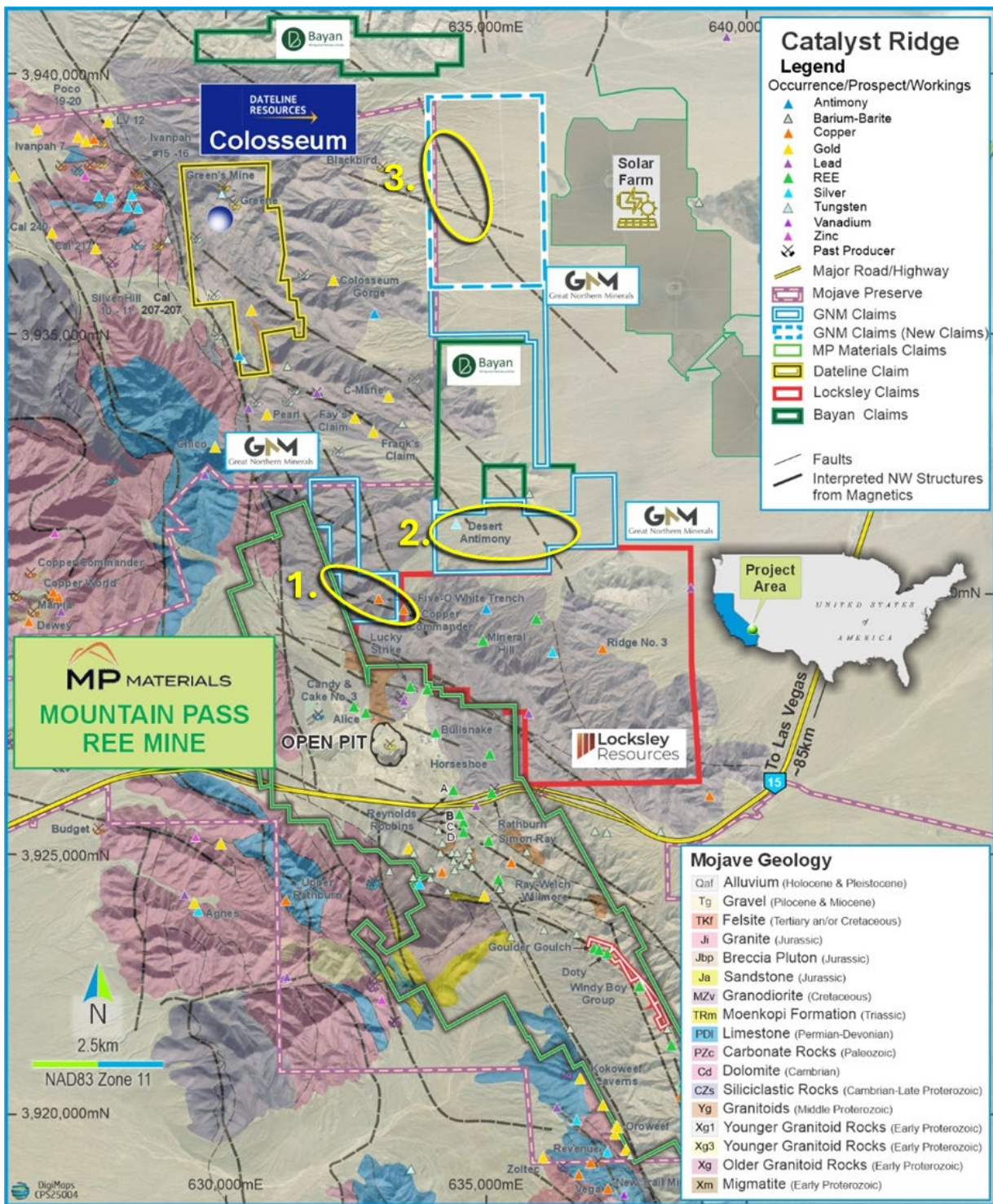


Figure 9: Interpreted bedrock geology map from the US Geological Survey¹ showing the location of the recently acquired GNM claims and the priority areas for the initial exploration program of work in relation to the Mountains Pass REE deposit, associated nearby mineral occurrences and other companies operating in the area.

References

¹Denton., K. Geophysical characterization of a Proterozoic REE terrane at Mountain Pass, eastern Mojave Desert, California, USA. USGS.

For personal use only

Forward Looking and Cautionary Statements

Forward looking statements, opinions and estimates included in this announcement are based on assumptions and contingencies which are subject to change without notice, as are statements about market and industry trends, which are based on interpretations of current market conditions. Forward looking statements are provided as a general guide only and should not be relied on as a guarantee of future performance. Forward looking statements may be affected by a range of variables that could cause actual results to differ from estimated results, and may cause the Company's actual performance and financial results in future periods to materially differ from any projections of future performance or results expressed or implied by such forward looking statements.

*****ENDS*****

For further information please contact:

Scott Downsborough

General Manager

Great Northern Minerals Limited

+61 8 9481 0389

scott@greatnorthernminerals.com.au

For personal use only