

Mulwarrie Gold Project, WA – Exploration Update

# More high-grade extensional drill results pave way for next growth drilling program at Mulwarrie

High-grade assays received from the final batch of drill-holes sitting outside the recently updated Mineral Resource Estimate ('MRE') (350koz at 3.6g/t Au) for the Mulwarrie Gold Project:

- **13.2m @ 8.5g/t Au from 359.0m** in MWEX041, drilled 50m down-dip from the August 2025 MRE and ~100m along strike of MWEX081 (7.8m @ 5.0 g/t).
- **5.0m @ 2.5g/t Au from 187.0m** in MWEX004, drilled 100m up-dip of MWEX041.

These results build on other outstanding recent step-out intercepts that were not included in the August 2025 MRE update:

- **4.2m @ 54.0g/t Au from 334.3m** in MWEX046 (previously released)
- **5.3m @ 13.0g/t Au from 210.5m** in MWEX080 (previously released)
- **7.8m @ 5.0g/t Au from 490.8m** in MWEX081 (previously released)
- **1.6m @ 18.6g/t Au from 130.5m** in MWEX052 (previously released)

The results reinforce the significant growth potential outside the current 350koz MRE at Mulwarrie, with a further resource update expected in Q4 2025.

High-grade mineralisation at Mulwarrie has now been defined in drilling over a 2.5km strike length and to a depth of 500m, with multiple stacked lodes open along strike and at depth.

The Project is located on granted Mining Leases, 10km from the Davyhurst Mill and 60km from the Comet Vale Project in the Goldfields region of Western Australia.

Gorilla will begin a new growth drilling program at Mulwarrie in November 2025 aimed at doubling the current resource base.

Gorilla currently has four drill rigs operating at the Comet Vale Project, working towards a significant MRE upgrade in Q4 2025.

Gorilla Gold Mines Ltd ('Gorilla', 'GG8' or 'the Company'), is pleased to report further high-grade assay results from the remaining drilling conducted in July 2025 at its 100%-owned Mulwarrie Gold Project, located 60km from its Comet Vale Project, and close to multiple operating gold processing facilities, just north of Kalgoorlie in Western Australia's Goldfields.



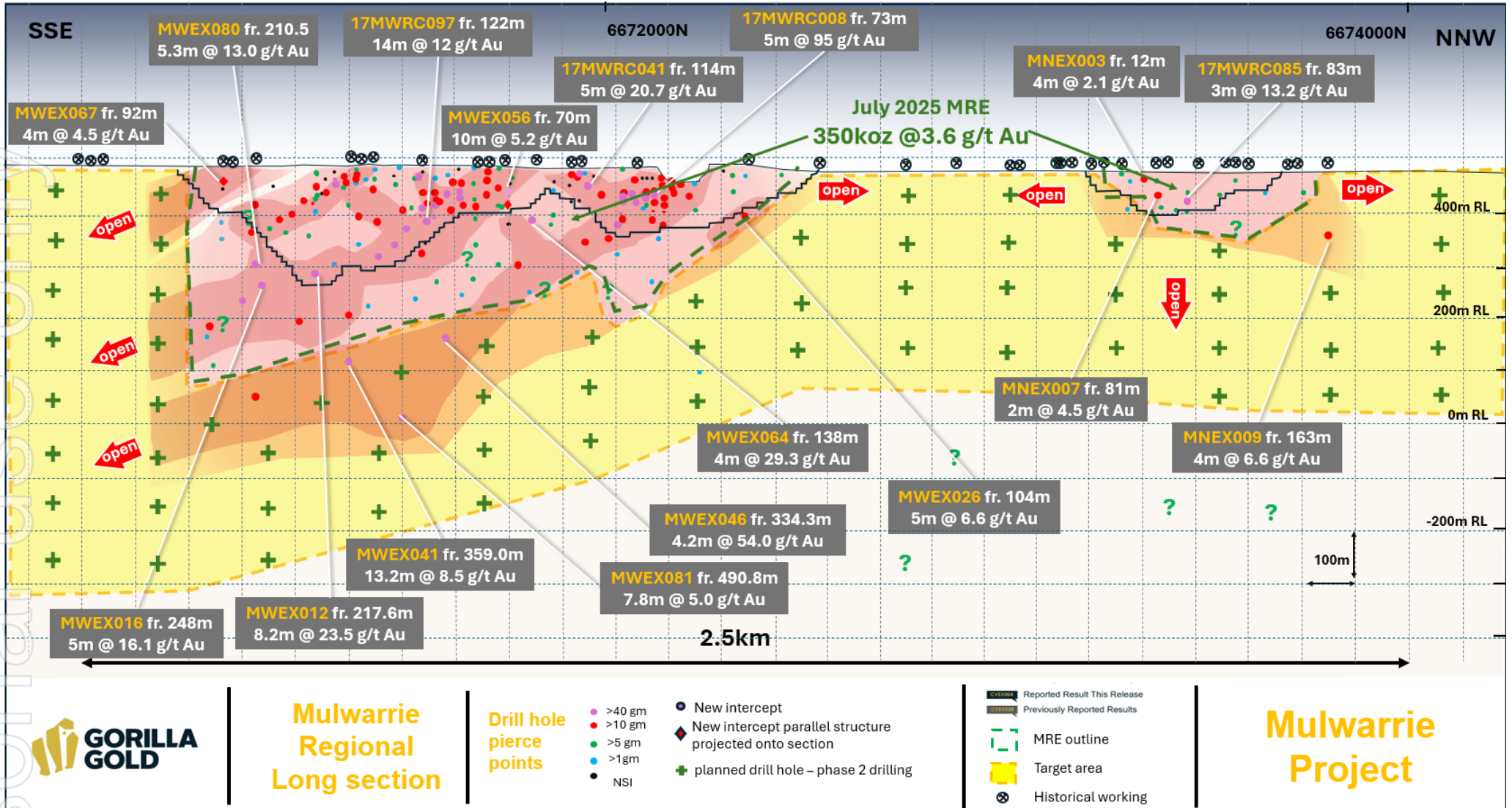


Figure 1. Long section of the Mulwarrie Gold Project.

For personal use only

This release reports high-grade assay results from step-out drilling targeting down-dip extensions of the known mineralisation at the Mulwarrie Project, outside the recently updated Mineral Resource Estimate ('MRE') envelope (Inferred and Indicated Resource: **3Mt at 3.6g/t Au for 350,000oz**).

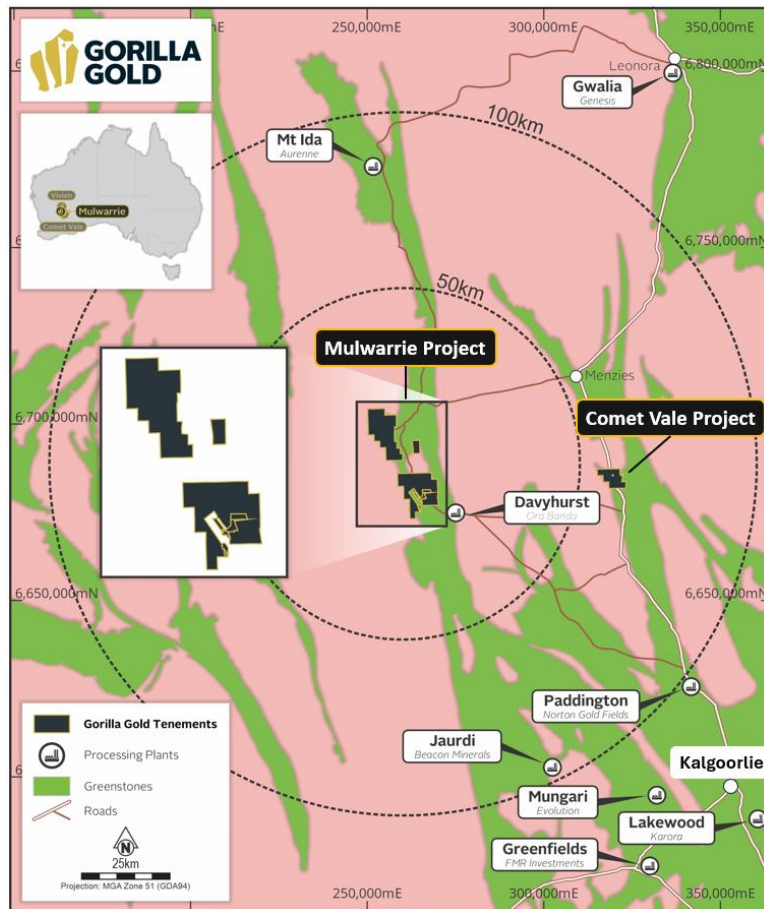
**Gorilla Chief Executive Officer, Charles Hughes, commented:**

*"The addition of these final high-grade results from the July drilling program to an already impressive list of high-grade intercepts outside the current 350koz MRE further enhances the exciting growth outlook for the Mulwarrie Project.*

*"These results will be incorporated in an updated MRE in the coming months. In parallel, we will recommence drilling at Mulwarrie in November, with a multi-rig program planned and a clear objective to at least double the resource base.*

*"With high-grade mineralisation now defined by drilling over a 2.5km strike extent and to a depth of 500m – and with the mineralisation open both along strike and at depth – we have a very clear picture of where we need to drill to grow the resource and take it to the next level.*

*"Our focus is currently at Comet Vale, where a 4-rig drill program is currently in progress building towards a major MRE upgrade in Q4 2025, while also discovering new mineralised positions. Gorilla is also planning to re-commence work at the Vivien Project later in the calendar year as we accelerate our growth strategy on multiple fronts and work to create value for our shareholders by adding high-grade ounces at our existing brownfields projects."*



**Figure 2.** Location of the Mulwarrie Gold Project.

## Growth and Exploration activities at Mulwarrie

Mulwarrie lies within granted Mining Leases adjacent to the Riverina-Davyhurst haul road, in a region with multiple operational gold mills within a 100km radius of the Project area.

The main mineralisation at Mulwarrie was discovered in 2017, with modest open pit production occurring before then. Prior to this, the project had fractured ownership, was tenure-constrained, and caught up in M&A activity.

When Gorilla acquired the Mulwarrie Project in November 2024, it further consolidated tenure in the area to unlock growth opportunities for the project. An updated MRE of 350koz @ 3.6g/t Au was announced for Mulwarrie in August 2025 which Gorilla is aiming to increase in both tonnes and grade.

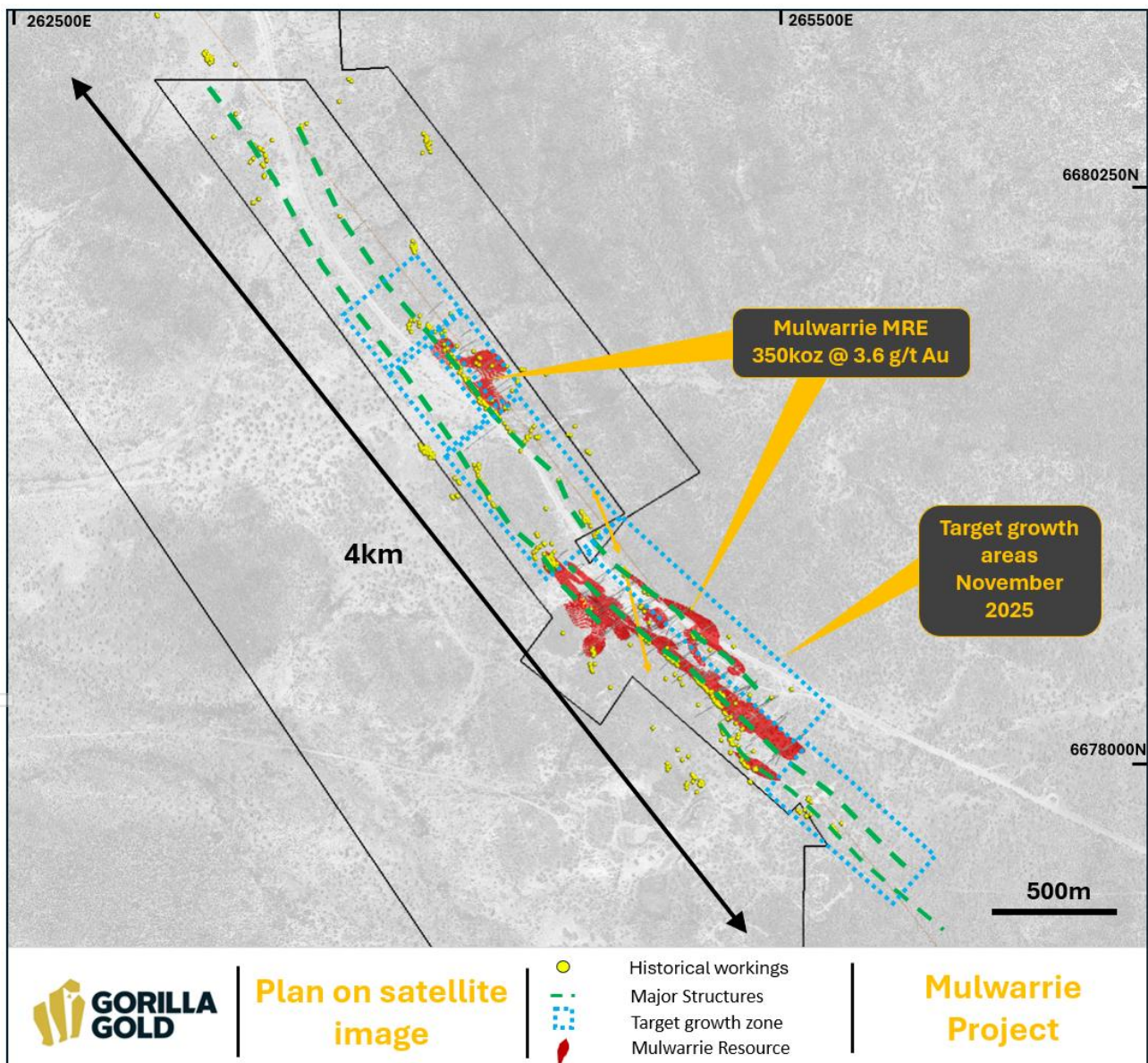


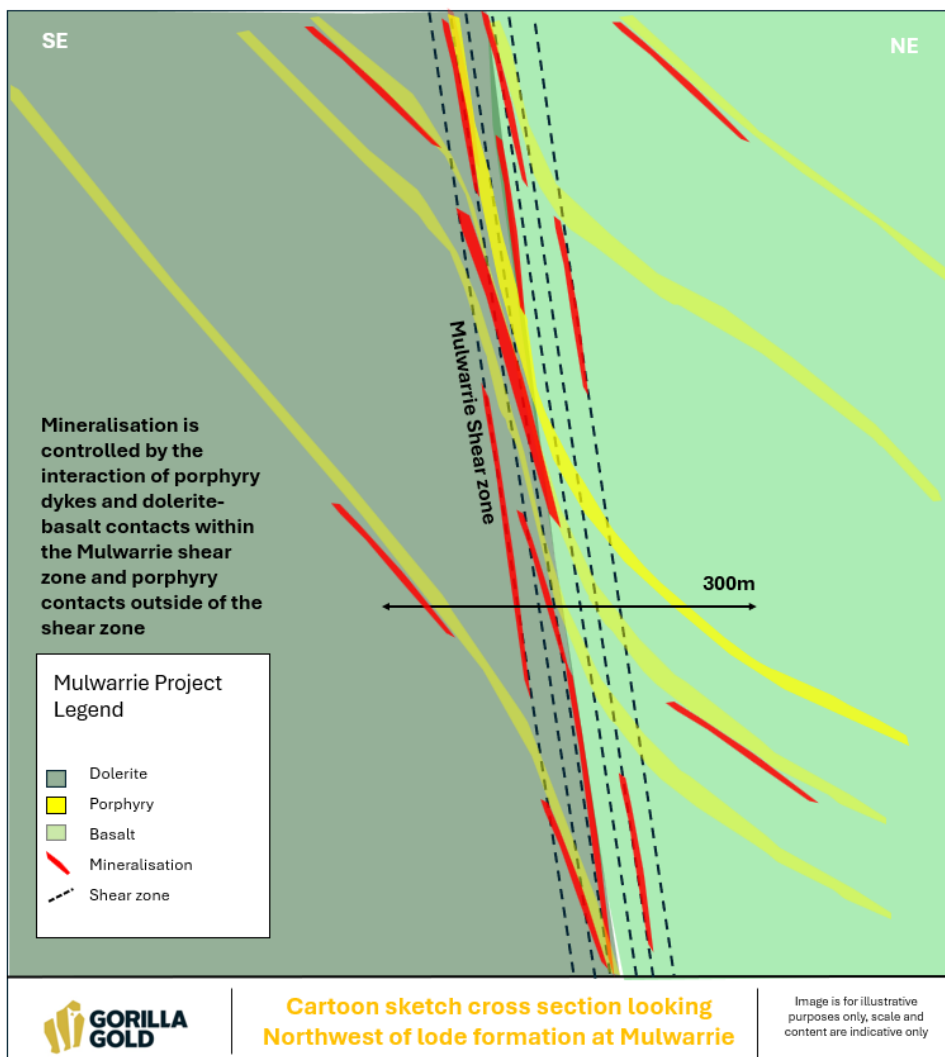
Figure 3. Planview of the Mulwarrie Project

For personal use only

At Mulwarrie, a major north-west trending, steeply dipping fault system is developed in mafic and intermediate lithologies. Historical workings on various parallel trends are present over more than 4km of strike. Very little drilling is present outside of the resource zones (Figure 3).

Gold mineralisation has developed with the major north-west trending, steeply dipping fault system and is associated with quartz veining, pyrrhotite and pyrite sulphides and biotite alteration, often at the margins of intermediate porphyries.

Rock units are competent and only lightly weathered from surface with historical pit wall angles up to 70 degrees. Metallurgical testwork undertaken on Mulwarrie ore samples has returned gold recovery by cyanidation of up to 96% including up to 45% by gravity extraction processes.



**Figure 4.** Cartoon Sketch cross section showing relationship between gold mineralisation and stratigraphy at Mulwarrie.

Drilling activities reported in this release are an update on exploration and growth drilling from Gorilla’s rapid resource growth campaign at Mulwarrie. This drilling is from the last batch of drill holes that were not included in the August 2025 MRE.

Significant gold intercepts (Table 1, Figure 1 & 3), have been received from this round of drilling targeting the Mulwarrie Central area.

For personal use only

Hole ID	From	To	interval	Au g/t
MWEX041	359.0	372.2	13.2	8.5
MWEX004	187.0	192.0	5.0	2.5
MWEX077	239.5	240.4	0.9	8.3
MWEX079	199.0	202.4	3.4	2.3
MWEX056	325.8	329.6	3.8	1.2

Table 1 New drilling results from Mulwarrie, this release



Figure 5. Photo of mineralised zone within MWEX041 13.2m @ 8.5 g/t Au from 359-372.2m

### Next steps at Mulwarrie

Gorilla has planned an extensive resource growth drilling program at Mulwarrie and will begin this in November 2025 (Figure 1).

In addition to this, comprehensive metallurgical test work is underway as well as geotechnical and engineering studies.

personal use only

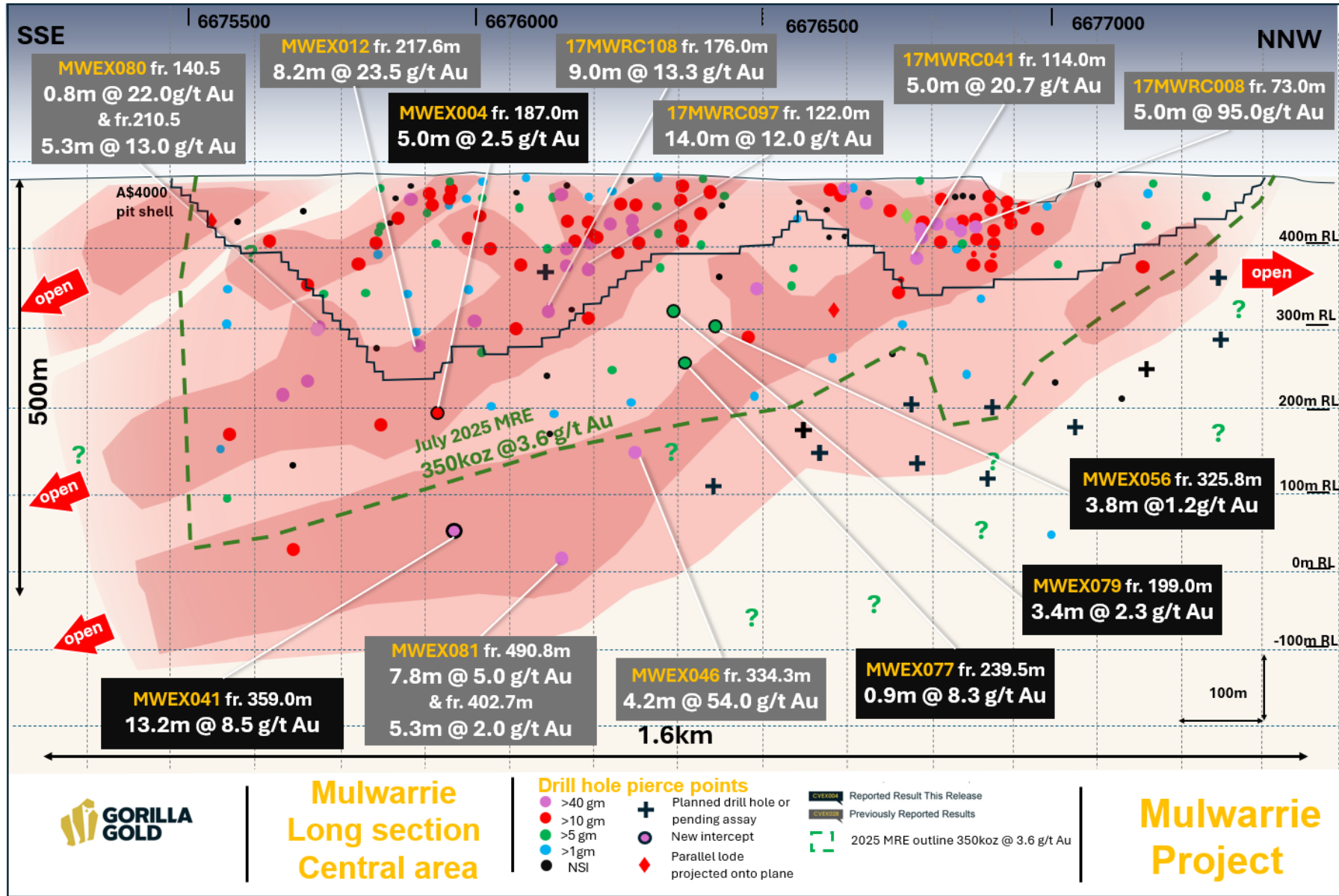


Figure 6. Long section of the Mulwarrie Gold Project, Central Zone showing intercepts from this release.

This announcement has been authorised and approved for release by the Board.

**Investor Enquiries**

Charles Hughes  
 Chief Executive Officer  
[admin@gg8.com.au](mailto:admin@gg8.com.au)

**Media Inquiries**

Read Corporate - Nicholas Read  
 Mobile: (0419 929 046)  
[nicholas@readcorporate.com.au](mailto:nicholas@readcorporate.com.au)

**Competent Person’s Statement:**

The information in this announcement relates to exploration results for the Mulwarrie Project which Mr. Charles Hughes has reviewed and approves. Mr. Hughes, who is an employee of Gorilla Gold Mines Ltd, a professional geoscientist and a Member of the Australian Institute of Geoscientists. Mr. Hughes has sufficient experience relevant to the style of mineralisation and type of deposits under consideration, and to the activities which have been undertaken to qualify as a Competent Person as defined in the 2012 Edition of the Joint Ore Reserves Committee (JORC) Australasian Code for Reporting of Exploration results, Mineral Resources and Ore Reserves. Mr. Hughes consents to the inclusion in this announcement of the matters based on this information in the form and context in which it appears.

Specific exploration results referred to in this announcement were originally reported in the following Company announcements in accordance with ASX Listing Rule 5.7:

Title	Date
High Grade Step-Out Holes at Mulwarrie	26 August 2025
Mulwarrie Resource Update	4 August 2025
Mulwarrie Drilling Update	28 July 2025
Mulwarrie Drilling Update	17 July 2025
Update For Comet Vale and Mulwarrie	2 July 2025
High Grade Diamond Drill Results from Mulwarrie	12 June
Mulwarrie Drilling Update	30 May 2025
Mulwarrie Update	4 April 2025
Maiden Drilling results from Mulwarrie	21 March 2025
Reporting on Genesis Minerals Mulwarrie Project	18 November 2024
Acquisition of Mulwarrie Project from Genesis Minerals	18 November 2024
High grade diamond drilling results at Mulwarrie confirm lode structures and pave way for resource upgrade	18 March 2019

The Company confirms that it is not aware of any information or data that materially affects the information included in the said original announcements and the form and context in which the Competent Persons’ findings are presented have not materially modified from the original market announcements.

**Current Mineral Resource Statement for the Mulwarrie Project:**

**Mulwarrie Mineral Resource Estimate Summary (0.5g/t cut-off Open pit, 1.1 g/t Underground)**

Category	Tonnage (Mt)	Au Grade (g/t)	Au Ounces
Inferred	1.3	2.8	110,000
Indicated	1.8	4.2	240,000
<b>Total</b>	<b>3</b>	<b>3.6</b>	<b>350,000</b>

The Company confirms that it is not aware of any new information or data that materially affects the information as previously released on 4 August 2025 and all material assumptions and technical parameters underpinning the estimate continue to apply and have not materially changed.

**APPENDIX 1 NEW COLLAR INFORMATION MULWARRIE**

Prospect	Hole ID	Depth	Hole Type	Grid	East	North	RL	dip	azi
Mulwarrie	<b>MWEX041</b>	396.6	RCDD	GDA94Z51	265396	6678307	486	70.5	236
Mulwarrie	<b>MWEX004</b>	237.6	RCDD	GDA94Z51	265332	6678263	486	60	235
Mulwarrie	<b>MWEX077</b>	390.1	RCDD	GDA94Z51	265164	6678457	488	72	222
Mulwarrie	<b>MWEX079</b>	250	RCDD	GDA94Z51	265166	6678457	488	63	220
Mulwarrie	<b>MWEX056</b>	339.2	RCDD	GDA94Z51	265224	6678532	495	50	236

## APPENDIX 3 JORC TABLES

### Section 1 Sampling Techniques and Data

(Criteria in this section apply to all succeeding sections.)

Criteria	JORC Code explanation	Comments
<b>Sampling techniques</b>	<ul style="list-style-type: none"> <li>Nature and quality of sampling (e.g. cut channels, random chips, or specific specialised industry standard measurement tools appropriate to the minerals under investigation, such as down hole gamma sondes, or handheld XRF instruments, etc). These examples should not be taken as limiting the broad meaning of sampling.</li> <li>Include reference to measures taken to ensure sample representivity and the appropriate calibration of any measurement tools or systems used.</li> <li>Aspects of the determination of mineralisation that are Material to the Public Report. In cases where 'industry standard' work has been done this would be relatively simple (e.g. 'reverse circulation drilling was used to obtain 1 m samples from which 3 kg was pulverised to produce a 30 g charge for fire assay').</li> <li>In other cases, more explanation may be required, such as where there is coarse gold that has inherent sampling problems. Unusual commodities or mineralisation types (e.g. submarine nodules) may warrant disclosure of detailed information.</li> </ul>	<ul style="list-style-type: none"> <li>RC drilling - samples collected as 4m composites and in areas where interesting lithology, alteration, mineralisation or veining was encountered, 1m splits were taken. Composite samples are collected from samples piles, 1m splits are taken for every metre from the cyclone with duplicate samples taken at the instruction of the field geologist from the second chut on the cone. DD drilling has samples collected as half core in intervals between 0.3-1m based on lithology.</li> <li>Samples collected by GG8 field crew and submitted to ALS Laboratory in Kalgoorlie, WA. All samples are considered to be representative for the manner in which they are used.</li> <li>The samples were analysed using the photon assay method which uses a 0.5kg sample and requires minimal handling. The samples are riffle split at the lab and crushed to 80% passing 2mm to ensure homogeneity as uniform sample distribution is important to a quality analysis.</li> </ul>
<b>Drilling techniques</b>	<ul style="list-style-type: none"> <li>Drill type (e.g. core, reverse circulation, open-hole hammer, rotary air blast, auger, Bangka, sonic, etc) and details (e.g. core diameter, triple or standard tube, depth of diamond tails, face-sampling bit or other type, whether core is oriented and if so, by what method, etc).</li> </ul>	<ul style="list-style-type: none"> <li>RC drilling was completed by several contractors using multiple modern RC rigs capable of significant drill depths. RC drilling uses a standard 5.5in bit and an auxiliary booster capable of 900psi, sufficient to keep sample dry at most depths. DD drilling was completed by contractors using multiple modern DD rigs. All drill rigs utilised by GG8 are industry best standard.</li> </ul>
<b>Drill sample recovery</b>	<ul style="list-style-type: none"> <li>Method of recording and assessing core and chip sample recoveries and results assessed.</li> <li>Measures taken to maximise sample recovery and ensure representative nature of the samples</li> <li>Whether a relationship exists between sample recovery and grade and whether sample bias may have occurred due to preferential loss/gain of fine/coarse material.</li> </ul>	<ul style="list-style-type: none"> <li>RC sample recovery was qualitatively assessed by the field geologists. Good recoveries were had. DD recovery measured actual core length between drillers blocks to the nearest cm. Sample weights are recorded by the laboratory and average 3kg.</li> <li>Sample depths were cross-checked regularly. The cyclone was regularly cleaned to ensure no material build up and sample material was checked for any potential downhole contamination. The drilling sample recoveries/quality are acceptable and are appropriately representative for the style of mineralisation.</li> <li>no obvious sample recovery biases or biases related to loss or gain of fines have been identified.</li> </ul>

For personal use only

<b>Logging</b>	<ul style="list-style-type: none"> <li>Whether core and chip samples have been geologically and geotechnically logged to a level of detail to support appropriate Mineral Resource estimation, mining studies and metallurgical studies.</li> </ul>	<ul style="list-style-type: none"> <li>Logged for geology on the 1m intervals with chips washed and stored in chip trays by the geologist. Logging was inputted directly into the onsite laptops using suitable Company logging.</li> <li>DD core stored in trays with every metre logged.</li> <li>Logging is of a qualitative nature.</li> </ul>
	<ul style="list-style-type: none"> <li>Whether logging is qualitative or quantitative in nature. Core (or costean, channel, etc) photography.</li> </ul>	<ul style="list-style-type: none"> <li>RC chips and DD were logged for lithology, colour, weathering, texture and minerals present. Structural measurements and geotechnical data were recorded on DD core</li> </ul>
	<ul style="list-style-type: none"> <li>The total length and percentage of the relevant intersections logged.</li> </ul>	<ul style="list-style-type: none"> <li>N/A</li> </ul>
<b>Sub-sampling techniques and sample preparation</b>	<ul style="list-style-type: none"> <li>If core, whether cut or sawn and whether quarter, half or all cores taken.</li> </ul>	<ul style="list-style-type: none"> <li>Core is sawn with half cores taken for assay</li> </ul>
	<ul style="list-style-type: none"> <li>If non-core, whether riffled, tube sampled, rotary split, etc and whether sampled wet or dry.</li> </ul>	<ul style="list-style-type: none"> <li>RC drilling single 1 metre splits were automatically taken at the time of drilling by a cone splitter attached to the cyclone. 4m composite samples were taken from sample piles. Samples have been dry. Samples are then riffle split at the lab into 0.5kg samples and crushed to 2mm prior to photon assay with a particle size distribution test to ensure 80% passing the 2mm threshold.</li> </ul>
	<ul style="list-style-type: none"> <li>For all sample types, the nature, quality and appropriateness of the sample preparation technique.</li> </ul>	<ul style="list-style-type: none"> <li>The technique was appropriate for the work undertaken. During RC logging samples that showed mineralisation, veining or alteration had 1m split samples collected. 1m split samples are later taken from where 4m composites show &gt;0.2g/t gold anomalism. During DD logging any sulphide veining or alteration were sampled.</li> </ul>
	<ul style="list-style-type: none"> <li>Quality control procedures adopted for all sub-sampling stages to maximise representivity of samples.</li> </ul>	<ul style="list-style-type: none"> <li>QAQC reference samples and duplicates were submitted by GG8. In house standards and blanks were also inserted by ALS.</li> </ul>
	<ul style="list-style-type: none"> <li>Measures taken to ensure that the sampling is representative of the in-situ material collected, including for instance results for field duplicate/second-half sampling.</li> </ul>	<ul style="list-style-type: none"> <li>1m samples are automatically bagged from the cyclone, field duplicates are taken from a second shute off the splitter. DD duplicates are taken</li> </ul>
	<ul style="list-style-type: none"> <li>Whether sample sizes are appropriate to the grain size of the material being sampled.</li> </ul>	<ul style="list-style-type: none"> <li>All RC samples are collected to approximately 1-5 kg. The sample sizes taken are appropriate relative to the style of mineralisation and analytical methods undertaken. DD sample size is appropriate</li> </ul>
	<ul style="list-style-type: none"> <li>The nature, quality and appropriateness of the assaying and laboratory procedures used and whether the technique is considered partial or total.</li> </ul>	<ul style="list-style-type: none"> <li>All samples were sent to ALS laboratory in Kalgoorlie. Photon Assay method has shown to provide quick turnaround times and high accuracy.</li> </ul>
<b>Quality of assay data and laboratory tests</b>	<ul style="list-style-type: none"> <li>For geophysical tools, spectrometers, handheld XRF instruments, etc, the parameters used in determining the analysis including instrument make and model, reading times, calibrations factors applied and their derivation, etc.</li> </ul>	<ul style="list-style-type: none"> <li>All analytical results listed are from an accredited laboratory using photon assay method with fire assay as a check method.</li> </ul>
	<ul style="list-style-type: none"> <li>Nature of quality control procedures adopted (e.g. standards, blanks, duplicates, external laboratory checks) and whether acceptable levels of accuracy (i.e. lack of bias) and precision have been established.</li> </ul>	<ul style="list-style-type: none"> <li>Certified Reference Materials (CRMs) are included in each batch to ensure the reliability of the assay. These CRMs, such as OREAS254C, OREAS230, and OREAS241, are specifically chosen for photon assay to maintain quality standards and were evaluated against published certificates. The standard deviation was minimal for samples. Selected photon assays over a range of grades and from different parts of orebodies are umpire checked with Fire Assays and so far shows no material difference in reported grades.</li> </ul>

For personal use only

<b>Verification of sampling and assaying</b>	<ul style="list-style-type: none"> <li>The verification of significant intersections by either independent or alternative company personnel.</li> </ul>	<ul style="list-style-type: none"> <li>External verification has not been carried out, but values were checked against logging and photographs to ensure the intersected Au values are in line with logged alteration, mineralisation or veining. Significant intercepts have been verified by the Exploration Manager, the CEO and Principal consulting geologist.</li> </ul>
	<ul style="list-style-type: none"> <li>The use of twinned holes</li> </ul>	<ul style="list-style-type: none"> <li>No twinned holes at this stage</li> </ul>
	<ul style="list-style-type: none"> <li>Documentation of primary data, data entry procedures, data verification, data storage (physical and electronic) protocols.</li> </ul>	<ul style="list-style-type: none"> <li>Data was captured directly into specific geological logging software. Assay files have been sent directly from the lab to database manager to avoid operator errors. All physical sampling sheets are filed and scanned electronically and submissions to the lab checked to ensure that no samples are missing or incorrect IDs.</li> </ul>
	<ul style="list-style-type: none"> <li>Discuss any adjustment to assay data.</li> </ul>	<ul style="list-style-type: none"> <li>No adjustments were made to the assay data.</li> </ul>
<b>Location of data points</b>	<ul style="list-style-type: none"> <li>Accuracy and quality of surveys used to locate drill holes (collar and down-hole surveys), trenches, mine workings and other locations used in Mineral Resource estimation.</li> </ul>	<ul style="list-style-type: none"> <li>Samples were located using handheld Garmin GPS, the GPS is accurate within 3-5m.</li> </ul>
	<ul style="list-style-type: none"> <li>Specification of the grid system used.</li> </ul>	<ul style="list-style-type: none"> <li>All collar locations and maps quoted in this Report are using the GDA1994 MGA, Zone 51 coordinate system.</li> </ul>
	<ul style="list-style-type: none"> <li>Quality and adequacy of topographic control.</li> </ul>	<ul style="list-style-type: none"> <li>Topography based on detailed topographic surveys.</li> </ul>
<b>Data spacing and distribution</b>	<ul style="list-style-type: none"> <li>Data spacing for reporting of Exploration Results.</li> </ul>	<ul style="list-style-type: none"> <li>Data spacing is varied</li> </ul>
	<ul style="list-style-type: none"> <li>Whether the data spacing, and distribution is sufficient to establish the degree of geological and grade continuity appropriate for the Mineral Resource and Ore Reserve estimation procedure(s) and classifications applied.</li> </ul>	<ul style="list-style-type: none"> <li>N/A</li> </ul>
	<ul style="list-style-type: none"> <li>Whether sample compositing has been applied.</li> </ul>	<ul style="list-style-type: none"> <li>Intercepts are aggregated based upon 0.5g/t Au cut off grade and 3m of dilution material.</li> </ul>
<b>Orientation of data in relation to geological structure</b>	<ul style="list-style-type: none"> <li>Whether the orientation of sampling achieves unbiased sampling of possible structures and the extent to which this is known, considering the deposit type.</li> </ul>	<ul style="list-style-type: none"> <li>The relationship between the drilling orientation and the orientation of mineralised structures is not considered to have introduced a sampling bias. Most holes have been drilled perpendicular to the main orientation of the interpreted mineralised zone.</li> </ul>
	<ul style="list-style-type: none"> <li>If the relationship between the drilling orientation and the orientation of key mineralised structures is considered to have introduced a sampling bias, this should be assessed and reported if material.</li> </ul>	<ul style="list-style-type: none"> <li>No drilling orientation related sampling bias has been identified at the Project. Some orientation changes were made to historic holes and the main structure was intersected at the interpreted depth.</li> </ul>
<b>Sample security</b>	<ul style="list-style-type: none"> <li>The measures taken to ensure sample security.</li> </ul>	<ul style="list-style-type: none"> <li>Samples were transported from the field to the lab by GG8 personnel.</li> </ul>
<b>Audits or reviews</b>	<ul style="list-style-type: none"> <li>The results of any audits or reviews of sampling techniques and data.</li> </ul>	<ul style="list-style-type: none"> <li>GG8 undertakes continuous audits and reviews of all its field processes.</li> </ul>

## Section 2 Reporting of Exploration Results

(Criteria listed in the preceding section also apply to this section.)

Criteria	JORC Code explanation	Commentary
<b>Mineral tenement and land tenure status</b>	<ul style="list-style-type: none"> <li>Type, reference name/number, location and ownership including agreements or material issues with third parties such as joint ventures, partnerships, overriding royalties, native title interests, historical sites, wilderness or national park and environmental settings.</li> </ul>	<p>The Mulwarrie project is in the Davyhurst region of the Eastern Goldfields, Western Australia. M30/119, M30/145, E30/511, E30/512, E30/513, P30/1141, P30/1142 and P30/1143. A 2.5% NSR is payable on the first 50koz of combined gold production from M30/119 and M30/145.</p>
	<ul style="list-style-type: none"> <li>The security of the tenure held at the time of reporting along with any known impediments to obtaining a licence to operate in the area.</li> </ul>	<ul style="list-style-type: none"> <li>No known impediments exist with respect to the exploration or development of the tenement.</li> </ul>
<b>Exploration done by other parties</b>	<ul style="list-style-type: none"> <li>Acknowledgment and appraisal of exploration by other parties.</li> </ul>	<ul style="list-style-type: none"> <li>See previous announcements. Review the Bardoc/Spitfire ASX announcement 19 March 2019, HIGH-GRADE DIAMOND DRILLING RESULTS AT MULWARRIE CONFIRM LODE STRUCTURES AND PAVE WAY FOR RESOURCE UPGRADE</li> <li>A summary of previous exploration at Mulwarrie Gold Project is included below.</li> <li>The Mulwarrie District, including the Mulwarrie Project area has a recorded production of 26,344 ounces of gold from 19,728 tonnes for an average grade of 41.53 g/t Au (1903-1910).</li> <li>1983 -1988 – Pancontinental Mining Limited completed gridding, geological mapping, aeromagnetic and ground surveys, IP surveys, regional soil sampling, costeaning, RAB and RC drilling.</li> <li>Callion, a subsidiary of the German based corporation, Thyssen Schachtbau GMBH (TSG) commenced mining at Mulwarrie Central West in November 1989, with New Holland Mining N.L. (20% interest) and H.F. Reif (6.25% interest). A total of 24,344 tonnes @ 3.88 g/t for 94.5 kg (3,037 ounces) of gold was recovered.</li> <li>In 1995 Consolidated Minerals had secured the tenements and in 1996 completed 34 RC holes (MWRC 601-634) for a total of 2,977 metres and to a maximum depth of 126 metres.</li> <li>Post 1997 and up to the date that Ethan Minerals Ltd signed option agreements with Reif and Hoppmann the latter parties conducted their own exploration programs within the Mulwarrie tenements. This work consisted of RC drilling, reconnaissance prospecting and loam sampling.</li> <li>In 1998 Reif and Hoppmann conducted an RC drilling program of 8 drill holes. MWRC 635 – MWRC 642 which was focused directly south of the Central Pit between 9590 North and 9620 North. The individual assay results from this program cannot be located in available reports.</li> <li>In 2017 Spitfire Minerals conducted drilling programs and after Bardoc took ownership conducted a resource estimation and investigated internally mining and economic studies. A pit cutback design was created.</li> </ul>

For personal use only

<p><b>Geology</b></p>	<ul style="list-style-type: none"> <li>▪ Deposit type, geological setting and style of mineralisation.</li> </ul>	<ul style="list-style-type: none"> <li>▪ The Mulwarrie Gold Project lies within a 10km wide greenstone belt which forms the northwest extension of the Coolgardie Line. The structurally dominant north trending Mt. Ida fault lies approximately 4km east of the Mulwarrie Mining Centre. Most of the lithologies within this greenstone belt are steeply dipping and well foliated along an NNW/SSE trend.</li> <li>▪ Gold mineralisation has been found in two distinct settings at Mulwarrie. Firstly, in narrow shear zones with only minor or no quartz veining, with limited calcsilicate alteration haloes and with variable, but occasionally high gold values. The zones of mineralisation may be up to 2 metres wide but are generally less than 50 cm. They are conformable to the stratigraphy and foliation. The second and most important type of gold mineralisation is associated with quite flat dipping often massive quartz reefs with strong diopside, biotite, epidote and carbonate alteration haloes where gold is also found and contributes to the overall wide mineralised intervals.</li> <li>▪ Gold mineralisation at Mulwarrie is associated with flat to steep dipping quartz reefs with strong diopside, biotite, epidote and carbonate alteration haloes. Pyrrhotite and pyrite development is also strong within and adjacent to the quartz reefs. Minor amounts of chalcopyrite, galena and sphalerite are also associated with gold mineralisation. Gold is found within quartz reefs, within biotite selvages to the quartz veins and in sheared &amp; altered country rocks.</li> <li>▪ The main modelled mineralised domains have a total dimension of 1,000m (north-south), ranging between less than a metre to multiple metres over up to 150m (east-west) in multiple veins and ranging between 300m and 500m RL (AMSL).</li> <li>▪ Benson (1996) interpreted the mineralised zones as being lens shaped pods and as being structurally and stratigraphically controlled with the zones commonly occurring at felsic/mafic contacts, within shear zones and at metabasalt -metadolerite contacts.</li> </ul>
-----------------------	---	---

For personal use only

<b>Drill hole Information</b>	<ul style="list-style-type: none"> <li>A summary of all information material to the understanding of the exploration results including a tabulation of the following information for all Material drill holes: <ul style="list-style-type: none"> <li>easting and northing of the drill hole collar</li> <li>elevation or RL (Reduced Level – elevation above sea level in metres) of the drill hole collar</li> <li>dip and azimuth of the hole.</li> <li>down hole length and interception depth</li> <li>hole length.</li> </ul> </li> </ul>	<ul style="list-style-type: none"> <li>Tables reported in the announcement all in MGA GDA 94 zone 51.</li> </ul>
	<ul style="list-style-type: none"> <li>If the exclusion of this information is justified on the basis that the information is not Material and this exclusion does not detract from the understanding of the report, the Competent Person should clearly explain why this is the case.</li> </ul>	<ul style="list-style-type: none"> <li>No information material to the understanding of the exploration results has been excluded.</li> </ul>
<b>Data aggregation methods</b>	<ul style="list-style-type: none"> <li>In reporting Exploration Results, weighting averaging techniques, maximum and/or minimum grade truncations (e.g. cutting of high grades) and cut-off grades are usually Material and should be stated.</li> </ul>	<ul style="list-style-type: none"> <li>The mineralized drill intersections will be reported as down hole intervals and were not converted to true widths. True widths may be up to 50% less than drill intersections pending confirmation of lode geometry. Where gold intersections are amalgamated, a weighted average is calculated &amp; repeats were recorded, the average of all the samples was used.</li> <li>Metal equivalent values have not been reported.</li> </ul>
	<ul style="list-style-type: none"> <li>Where aggregate intercepts incorporate short lengths of high-grade results and longer lengths of low grade results, the procedure used for such aggregation should be stated and some typical examples of such aggregations should be shown in detail.</li> </ul>	<ul style="list-style-type: none"> <li>Weighted average is applied.</li> </ul>
	<ul style="list-style-type: none"> <li>The assumptions used for any reporting of metal equivalent values should be clearly stated.</li> </ul>	<ul style="list-style-type: none"> <li>No metal equivalents used.</li> </ul>
<b>Relationship between mineralisation widths and intercept lengths</b>	<ul style="list-style-type: none"> <li>These relationships are particularly important in the reporting of Exploration Results.</li> </ul>	<ul style="list-style-type: none"> <li>All samples reported are downhole width</li> </ul>
	<ul style="list-style-type: none"> <li>If the geometry of the mineralisation with respect to the drill hole angle is known, its nature should be reported.</li> </ul>	<ul style="list-style-type: none"> <li>Unknown at this stage, assumed to be roughly orthogonal to drilling</li> </ul>
	<ul style="list-style-type: none"> <li>If it is not known and only the down hole lengths are reported, there should be a clear statement to this effect (e.g. 'down hole length, true width not known').</li> </ul>	<ul style="list-style-type: none"> <li>All intercepts are downhole intercepts</li> </ul>

For personal use only

<b>Diagrams</b>	<ul style="list-style-type: none"> <li>Appropriate maps and sections (with scales) and tabulations of intercepts should be included for any significant discovery being reported. These should include, but not be limited to a plan view of drill hole collar locations and appropriate sectional views.</li> </ul>	<ul style="list-style-type: none"> <li>Appropriate plan and diagrams are included in the body of the text.</li> </ul>
<b>Balanced reporting</b>	<ul style="list-style-type: none"> <li>Where comprehensive reporting of all Exploration Results is not practicable, representative reporting of both low and high grades and/or widths should be practiced to avoid misleading reporting of Exploration Results.</li> </ul>	<ul style="list-style-type: none"> <li>Reporting is representative</li> </ul>
<b>Other substantive exploration data</b>	<ul style="list-style-type: none"> <li>Other exploration data, if meaningful and material, should be reported including (but not limited to): geological observations; geophysical survey results; geochemical survey results; bulk samples – size and method of treatment; metallurgical test results; bulk density, groundwater, geotechnical and rock characteristics; potential deleterious or contaminating substances.</li> </ul>	<ul style="list-style-type: none"> <li>All other relevant data has been included within this report. Though GG8 acknowledges that often, with time and the announcement of acquisition, further insight and data is obtained from previous geologists/companies that have explored the ground.</li> </ul>
<b>Further work</b>	<ul style="list-style-type: none"> <li>The nature and scale of planned further work (e.g. tests for lateral extensions or depth extensions or large-scale step-out drilling).</li> </ul>	<ul style="list-style-type: none"> <li>Further work will be conducted to investigate the extension of mineralisation at depth and along strike. Refer to the body of the text.</li> </ul>
	<ul style="list-style-type: none"> <li>Diagrams clearly highlighting the areas of possible extensions, including the main geological interpretations and future drilling areas, provided this information is not commercially sensitive.</li> </ul>	<ul style="list-style-type: none"> <li>Diagrams highlight areas of possible extensions</li> </ul>