



ASX Announcement

ASX: GML

07 October 2025

44,000 METRE AIRCORE PROGRAM COMMENCED

MAJOR AIRCORE DRILLING PROGRAM UPSIZED ACROSS MUSTANG-PONY

HIGHLIGHTS

- Gateway has increased the previously announced 25,000m aircore program to total 44,000m, which will be completed prior to the end of 2025.
- Drilling will focus on a highly prospective 8km portion of the Mustang Shear, including where it converges with the regional Celia Shear.
- Drilling will also test the structurally complex region surrounding multiple intrusions (Pony, Colt, Haflinger) immediately north of Mustang, which the Company considers to be a prime setting for significant gold mineralisation.
- A diamond drill rig is scheduled to arrive next week to commence drilling at the Dusk ‘til Dawn targets.
- Gateway remains well capitalised to undertake planned 2025 and 2026 exploration, with cash and liquid ASX listed securities of approximately \$12.1m as at the end of the June quarter, as well as having recently completed a \$22.5m capital raising.

Management Comment

Gateway’s Executive Chairman, Mr Andrew Bray, said: “We are thrilled to be back drilling at the Yandal Gold Project. A large 44,000m aircore program is now underway, and we have a diamond rig arriving on site towards the end of next week.

Drilling at Mustang is targeting the same lithological contact as that which hosts the high-grade gold mineralisation at Horse Well. What differentiates Mustang from Horse Well, however, is substantially more structural complexity combined with greater scale, both of which the Company expects will lead to much more significant gold mineralisation.

The aircore rig we are using has the potential to ‘core’ the end of holes, allowing for fresh rock samples that would otherwise not have been available. Numerous shallow, oxide gold targets will also be drilled as part of the program.

Immediately to the north of Mustang, drilling will target a region where gold prospectivity is further enhanced by the flexure and kinking of the combined shear corridor around three discrete intrusions (termed the Pony, Colt and Haflinger intrusions). This structural junction has generated multiple large-scale dilational zones over a ~4.5km strike, which are considered prime settings for significant gold mineralisation.

The diamond drilling rig scheduled to arrive towards the end of next week will initially focus on testing several key targets at Dusk ‘til Dawn, however Gateway will retain flexibility to test any emerging targets out of the Mustang-Pony aircore drilling before programs wrap up for 2025.”

Gateway Mining Ltd

B1/431 Roberts Road
Subiaco WA 6008

LinkedIn: @gateway-mining
Twitter: @gateway_mining
www.gatewaymining.com.au

For personal use only

Introduction

Gateway Mining Limited (ASX: GML) (**Gateway** or **Company**) is pleased to provide an update on its Yandal Gold Project in Western Australia.

Mustang Shear Zone

The Mustang Shear Zone spans a minimum strike length of 22km and is located along the eastern margin of the Archaean Basement granitoid, in an analogous setting to the Celia Shear Zone that follows the western margin of the same granitoid (Figure 1 and 2).

Gold anomalism identified through historic shallow, wide-spaced rotary air blast (RAB) and aircore drilling along the Mustang Shear Zone spans 7km of strike and is open along strike and at depth.¹

Geophysical data interpretation shows that the Mustang Shear converges with the Celia Shear Zone at the Pony Target to form a larger, combined shear corridor that exhibits a high structural complexity.² This complexity is further enhanced by the flexure and kinking of the combined shear corridor around three discrete intrusions - termed Pony, Haflinger, and Colt - and crosscut by a series of northeast-trending structures.

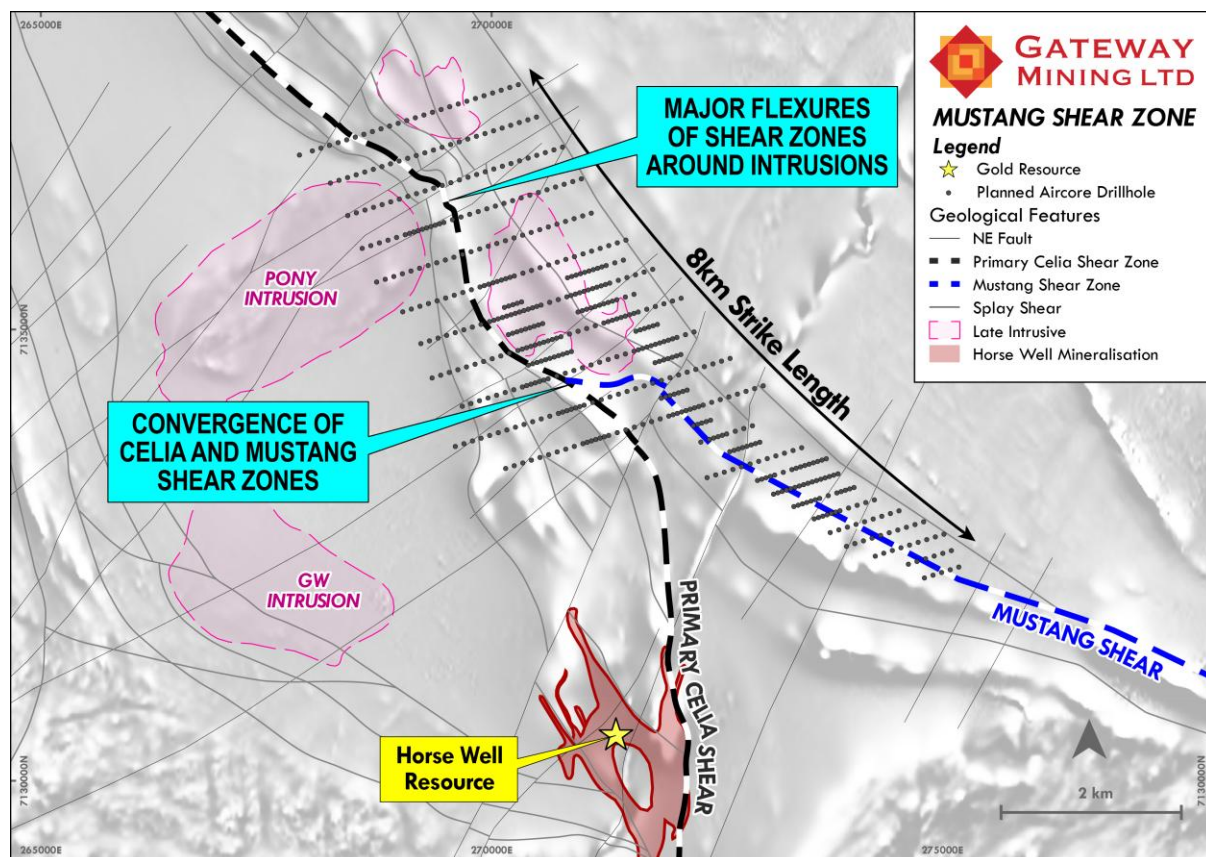


Figure 1: Planned aircore drilling across Mustang and Pony Targets.

This structural junction has resulted in the formation of multiple extensive dilational zones spanning at least 4.5km of strike which are regarded as highly prospective geological settings for substantial gold accumulation. Despite the favourable structural features, prior exploration efforts have been restricted to widely spaced, shallow, vertical RAB drilling, with all drill holes ending within weathered material.³ This means the main structures have yet to be tested by any drilling.

¹Refer to ASX announcement dated 26 August 2026.

²Refer to ASX announcement dated 26 August 2026.

³Refer to ASX announcement dated 26 August 2026.

Aircore Drilling

Gateway has commenced a 44,000m aircore drilling program that will span 8km of strike length of the Mustang Shear Zone and the Pony Target.

The aircore program aims to identify key mineralised structures within the shear corridor and delineate the position of the mafic-intermediate contact; a key horizon for gold mineralisation within the wider Yandal Project.

Results from this aircore program will be used to aid in the planning of an expanded aircore program, covering the entire 22km strike length of the Mustang Shear Zone, as well as refine gold targets for follow-up reverse circulation and diamond drilling.

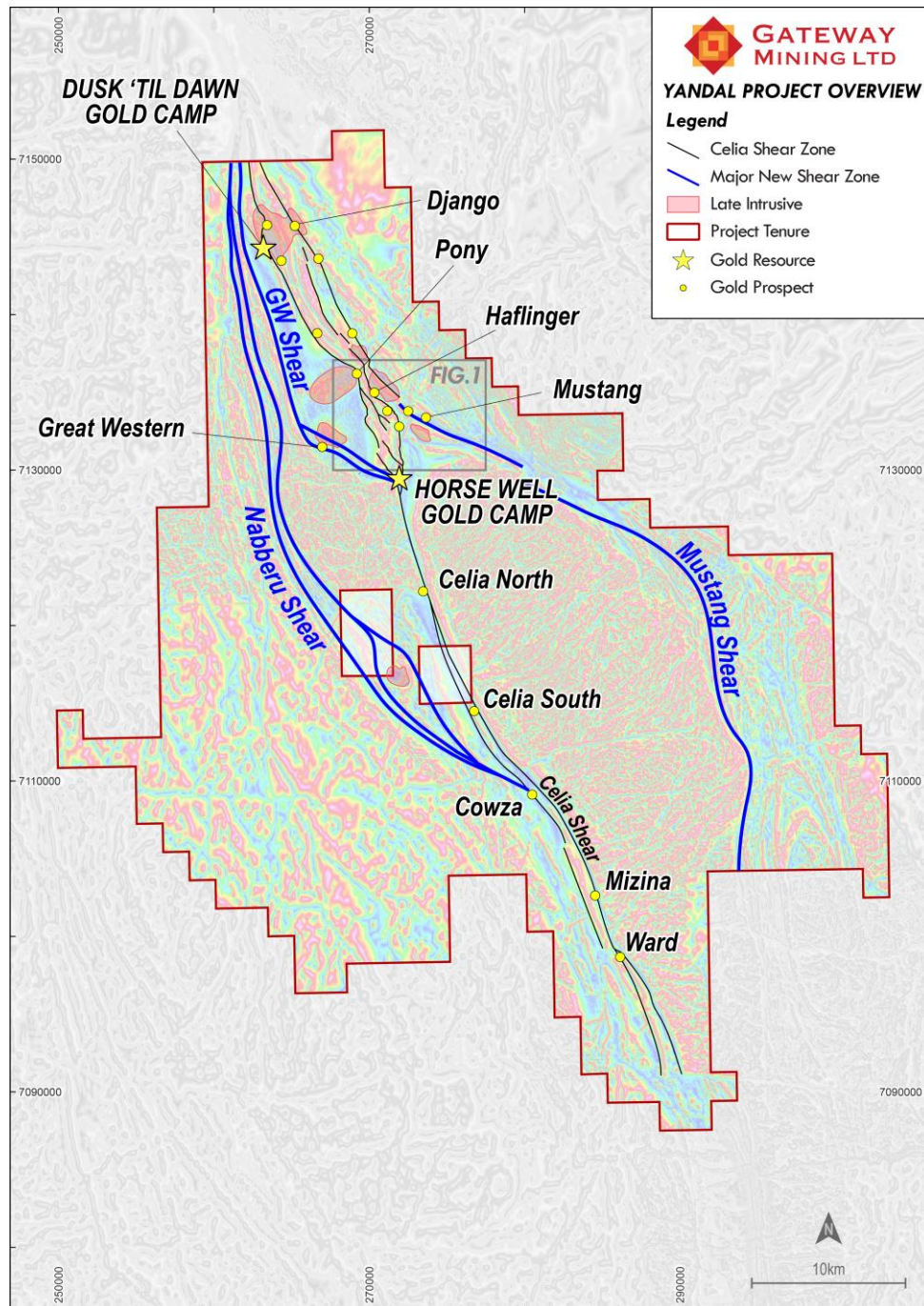


Figure 2: Yandal Gold Project, highlighting shear zones and key target areas in relation to key prospects.

This released has been authorised by:

Andrew Bray
Executive Chairman

***For and on behalf of
GATEWAY MINING LIMITED***

Investors

**Andrew Bray
Executive Chairman
T: 08 6383 9969**

or

**Kar Chua
Company Secretary
T: 02 8316 3998**

Media

**Nicholas Read
Read Corporate
T: 08 9388 1474**

[Click here to subscribe to investor updates](#)

Follow us on:

LinkedIn: [@gateway-mining](#)

Twitter: [@gateway_mining](#)

For personal use only

Competent Person Statement

The information in this announcement that relates to Exploration Results and Mineral Resources has been extracted from various Gateway ASX announcements and are available to view on the Company's website at www.gatewaymining.com.au or through the ASX website at www.asx.com.au (using ticker code "GML").

The Company confirms that it is not aware of any new information or data that materially affects the information included in the original market announcement and that all material assumptions and technical parameters underpinning the Mineral Resources in the relevant market announcement continue to apply and have not materially changed. The Company confirms that the form and context in which the Competent Person's findings are presented have not been materially modified from the original market announcement.

Forward Looking Statement

This announcement may contain certain forward-looking statements, guidance, forecasts, estimates, prospects, projections or statements in relation to future matters that may involve risks or uncertainties and may involve significant items of subjective judgement and assumptions of future events that may or may not eventuate (**Forward-Looking Statements**). Forward-Looking Statements can generally be identified by the use of forward-looking words such as "anticipate", "estimates", "will", "should", "could", "may", "expects", "plans", "forecast", "target" or similar expressions and may include, without limitation, statements regarding plans, strategies and objectives of management, anticipated production and expected costs. Indications of, and guidance on future earnings, cash flows, costs, financial position and performance are also Forward Looking Statements.

Persons reading this announcement are cautioned that such statements are only predictions, and that actual future results or performance may be materially different. Forward-Looking Statements, opinions and estimates included in this announcement are based on assumptions and contingencies which are subject to change, without notice, as are statements about market and industry trends, which are based on interpretation of current market conditions. Forward-Looking Statements are provided as a general guide only and should not be relied on as a guarantee of future performance.

No representation or warranty, express or implied, is made by Gateway that any Forward-Looking Statement will be achieved or proved to be correct. Further, Gateway disclaims any intent or obligation to update or revise any Forward-Looking Statement whether as a result of new information, estimates or options, future events or results or otherwise, unless required to do so by law.

Yandal Project JORC 2012 Mineral Resource Estimate

Table 1: Yandal Inferred Mineral Resource Estimates

Prospect	Tonnes (t)	Au (g/t)	Au (oz)	Cut-off
Palomino Pit	1,963,000	1.84	116,000	0.5
Palomino UG	155,000	2.69	13,500	2.0
Palomino Total	2,118,000	1.90	129,500	-
Warmblood	1,656,000	2.37	126,000	0.5
Filly	581,000	1.15	21,500	0.5
Bronco	324,000	1.38	14,500	0.5
HWGC Subtotal	4,679,000	1.94	291,500	-
Dusk 'til Dawn	3,495,600	1.00	108,900	0.5
Yandal Project Total	8,174,600	1.52	400,400	

Table Notes:

- Mineral Resources are based on JORC Code Definitions as defined by the Australasian Code for Reporting Results, Mineral Resources and Ore Reserves.
- All figures are rounded to reflect appropriate levels of confidence. Apparent differences may occur due to rounding.
- The Mineral Resource Estimate has been estimated using appropriate high-grade cuts, minimum mining widths and dilutions.
- Tonnes rounded to the nearest 1,000t, ounces rounded to the nearest 500oz.
- Refer to ASX announcement dated 2 July 2025 titled "Acquisition of Yandal Gold Project from Strickland Metals Ltd" for further details regarding the MRE.

For personal use only

APPENDIX A: PLANNED AIRCORE DRILLHOLE COLLARS

Planned ID	Hole Type	Coordinates (MGA94 Zone 51)			Planned Depth (m)
		Easting	Northing	RL (m)	
AC001	AC	268011	7136979	550	80
AC002	AC	268106	7137009	550	80
AC003	AC	268201	7137040	550	80
AC004	AC	268296	7137070	550	80
AC005	AC	268392	7137101	550	80
AC006	AC	268487	7137131	550	80
AC007	AC	268582	7137162	550	80
AC008	AC	268677	7137193	550	80
AC009	AC	268772	7137223	550	80
AC010	AC	268868	7137254	550	80
AC011	AC	268963	7137284	550	80
AC012	AC	269058	7137315	550	80
AC013	AC	269153	7137345	550	80
AC014	AC	269248	7137376	550	80
AC015	AC	269344	7137406	550	80
AC016	AC	269439	7137437	550	80
AC017	AC	269534	7137467	550	80
AC018	AC	269629	7137498	550	80
AC019	AC	269725	7137529	550	80
AC020	AC	269820	7137559	550	80
AC021	AC	269915	7137590	550	80
AC022	AC	270010	7137620	550	80
AC023	AC	270105	7137651	550	80
AC024	AC	270201	7137681	550	80
AC025	AC	270296	7137712	550	80
AC026	AC	268497	7136713	550	80
AC027	AC	268592	7136744	550	80
AC028	AC	268687	7136774	550	80
AC029	AC	268783	7136805	550	80
AC030	AC	268878	7136835	550	80
AC031	AC	268973	7136866	550	80
AC032	AC	269068	7136896	550	80
AC033	AC	269164	7136927	550	80
AC034	AC	269259	7136957	550	80
AC035	AC	269354	7136988	550	80
AC036	AC	269449	7137018	550	80
AC037	AC	269545	7137049	550	80
AC038	AC	269640	7137079	550	80
AC039	AC	269735	7137110	550	80
AC040	AC	269830	7137140	550	80
AC041	AC	269926	7137170	550	80
AC042	AC	270021	7137201	550	80
AC043	AC	270116	7137231	550	80
AC044	AC	270211	7137262	550	80
AC045	AC	270307	7137292	550	80
AC046	AC	270402	7137323	550	80
AC047	AC	270497	7137353	550	80
AC048	AC	268975	7136444	550	80
AC049	AC	269071	7136474	550	80
AC050	AC	269166	7136505	550	80
AC051	AC	269261	7136535	550	80
AC052	AC	269357	7136565	550	80
AC053	AC	269452	7136596	550	80

For personal use only

Planned ID	Hole Type	Coordinates (MGA94 Zone 51)			Planned Depth (m)
		Easting	Northing	RL (m)	
AC054	AC	269547	7136626	550	80
AC055	AC	269643	7136656	550	80
AC056	AC	269738	7136687	550	80
AC057	AC	269833	7136717	550	80
AC058	AC	269928	7136747	550	80
AC059	AC	270024	7136778	550	80
AC060	AC	270119	7136808	550	80
AC061	AC	270214	7136838	550	80
AC062	AC	270310	7136869	550	80
AC063	AC	270405	7136899	550	80
AC064	AC	270500	7136929	550	80
AC065	AC	270595	7136960	550	80
AC066	AC	270691	7136990	550	80
AC067	AC	270786	7137020	550	80
AC068	AC	269088	7136065	550	80
AC069	AC	269136	7136080	550	80
AC070	AC	269184	7136095	550	80
AC071	AC	269231	7136110	550	80
AC072	AC	269279	7136125	550	80
AC073	AC	269327	7136140	550	80
AC074	AC	269374	7136155	550	80
AC075	AC	269422	7136170	550	80
AC076	AC	269470	7136185	550	80
AC077	AC	269565	7136216	550	80
AC078	AC	269660	7136246	550	80
AC079	AC	269756	7136276	550	80
AC080	AC	269851	7136306	550	80
AC081	AC	269946	7136336	550	80
AC082	AC	270042	7136367	550	80
AC083	AC	270137	7136397	550	80
AC084	AC	270232	7136427	550	80
AC085	AC	270327	7136457	550	80
AC086	AC	270423	7136488	550	80
AC087	AC	270518	7136518	550	80
AC088	AC	270613	7136548	550	80
AC089	AC	270709	7136578	550	80
AC090	AC	270804	7136608	550	80
AC091	AC	270899	7136639	550	80
AC092	AC	270995	7136669	550	80
AC093	AC	268819	7135556	550	80
AC094	AC	268915	7135586	550	80
AC095	AC	269010	7135617	550	80
AC096	AC	269105	7135647	550	80
AC097	AC	269200	7135678	550	80
AC098	AC	269295	7135708	550	80
AC099	AC	269391	7135739	550	80
AC100	AC	269486	7135769	550	80
AC101	AC	269581	7135800	550	80
AC102	AC	269676	7135831	550	80
AC103	AC	269772	7135861	550	80
AC104	AC	269867	7135892	550	80
AC105	AC	269962	7135922	550	80
AC106	AC	270057	7135953	550	80
AC107	AC	270152	7135983	550	80
AC108	AC	270248	7136014	550	80

For personal use only

Planned ID	Hole Type	Coordinates (MGA94 Zone 51)			Planned Depth (m)
		Easting	Northing	RL (m)	
AC109	AC	270343	7136044	550	80
AC110	AC	270438	7136075	550	80
AC111	AC	270533	7136105	550	80
AC112	AC	270629	7136136	550	80
AC113	AC	270724	7136166	550	80
AC114	AC	270819	7136197	550	80
AC115	AC	270914	7136227	550	80
AC116	AC	271009	7136258	550	80
AC117	AC	271105	7136288	550	80
AC118	AC	269109	7135226	550	80
AC119	AC	269204	7135256	550	80
AC120	AC	269299	7135287	550	80
AC121	AC	269394	7135318	550	80
AC122	AC	269490	7135348	550	80
AC123	AC	269585	7135379	550	80
AC124	AC	269680	7135409	550	80
AC125	AC	269775	7135440	550	80
AC126	AC	269870	7135470	550	80
AC127	AC	269918	7135486	550	80
AC128	AC	269966	7135501	550	80
AC129	AC	270013	7135516	550	80
AC130	AC	270061	7135531	550	80
AC131	AC	270109	7135547	550	80
AC132	AC	270156	7135562	550	80
AC133	AC	270204	7135577	550	80
AC134	AC	270251	7135593	550	80
AC135	AC	270347	7135623	550	80
AC136	AC	270442	7135654	550	80
AC137	AC	270537	7135684	550	80
AC138	AC	270632	7135715	550	80
AC139	AC	270727	7135745	550	80
AC140	AC	270823	7135776	550	80
AC141	AC	270918	7135806	550	80
AC142	AC	271013	7135837	550	80
AC143	AC	271108	7135868	550	80
AC144	AC	271204	7135898	550	80
AC145	AC	271299	7135929	550	80
AC146	AC	271394	7135959	550	80
AC147	AC	271489	7135990	550	80
AC148	AC	270141	7135244	550	80
AC149	AC	270189	7135259	550	80
AC150	AC	270284	7135290	550	80
AC151	AC	270237	7135275	550	80
AC152	AC	270332	7135305	550	80
AC153	AC	269215	7134843	550	80
AC154	AC	269310	7134873	550	80
AC155	AC	269405	7134904	550	80
AC156	AC	269500	7134934	550	80
AC157	AC	269596	7134965	550	80
AC158	AC	269691	7134995	550	80
AC159	AC	269786	7135026	550	80
AC160	AC	269881	7135056	550	80
AC161	AC	269977	7135087	550	80
AC162	AC	270024	7135102	550	80
AC163	AC	270072	7135117	550	80

For personal use only

Planned ID	Hole Type	Coordinates (MGA94 Zone 51)			Planned Depth (m)
		Easting	Northing	RL (m)	
AC164	AC	270119	7135132	550	80
AC165	AC	270167	7135148	550	80
AC166	AC	270215	7135163	550	80
AC167	AC	270262	7135178	550	80
AC168	AC	270310	7135193	550	80
AC169	AC	270357	7135209	550	80
AC170	AC	270405	7135224	550	80
AC171	AC	270453	7135239	550	80
AC172	AC	270500	7135254	550	80
AC173	AC	270548	7135270	550	80
AC174	AC	270643	7135300	550	80
AC175	AC	270738	7135331	550	80
AC176	AC	270834	7135361	550	80
AC177	AC	270929	7135392	550	80
AC178	AC	271024	7135422	550	80
AC179	AC	271119	7135453	550	80
AC180	AC	271215	7135483	550	80
AC181	AC	271310	7135514	550	80
AC182	AC	271405	7135544	550	80
AC183	AC	271500	7135575	550	80
AC184	AC	271596	7135605	550	80
AC185	AC	271691	7135635	550	80
AC186	AC	271786	7135666	550	80
AC187	AC	270185	7134943	550	80
AC188	AC	270233	7134958	550	80
AC189	AC	270280	7134973	550	80
AC190	AC	270328	7134988	550	80
AC191	AC	270376	7135004	550	80
AC192	AC	270423	7135019	550	80
AC193	AC	270471	7135034	550	80
AC194	AC	270518	7135050	550	80
AC195	AC	270566	7135065	550	80
AC196	AC	269339	7134462	550	80
AC197	AC	269435	7134493	550	80
AC198	AC	269530	7134523	550	80
AC199	AC	269625	7134554	550	80
AC200	AC	269720	7134584	550	80
AC201	AC	269816	7134615	550	80
AC202	AC	269911	7134645	550	80
AC203	AC	270006	7134676	550	80
AC204	AC	270101	7134706	550	80
AC205	AC	270197	7134736	550	80
AC206	AC	270292	7134767	550	80
AC207	AC	270339	7134782	550	80
AC208	AC	270387	7134797	550	80
AC209	AC	270435	7134813	550	80
AC210	AC	270482	7134828	550	80
AC211	AC	270530	7134843	550	80
AC212	AC	270578	7134858	550	80
AC213	AC	270625	7134873	550	80
AC214	AC	270673	7134889	550	80
AC215	AC	270720	7134904	550	80
AC216	AC	270768	7134919	550	80
AC217	AC	270863	7134950	550	80
AC218	AC	270959	7134980	550	80

For personal use only

Planned ID	Hole Type	Coordinates (MGA94 Zone 51)			Planned Depth (m)
		Easting	Northing	RL (m)	
AC219	AC	271054	7135010	550	80
AC220	AC	271149	7135041	550	80
AC221	AC	271244	7135071	550	80
AC222	AC	271340	7135102	550	80
AC223	AC	271435	7135132	550	80
AC224	AC	271530	7135163	550	80
AC225	AC	271625	7135193	550	80
AC226	AC	271721	7135224	550	80
AC227	AC	271816	7135254	550	80
AC228	AC	271911	7135285	550	80
AC229	AC	272006	7135315	550	80
AC230	AC	272102	7135345	550	80
AC231	AC	270408	7134604	550	80
AC232	AC	270456	7134619	550	80
AC233	AC	270503	7134634	550	80
AC234	AC	270551	7134649	550	80
AC235	AC	270599	7134664	550	80
AC236	AC	270646	7134680	550	80
AC237	AC	270694	7134695	550	80
AC238	AC	270742	7134710	550	80
AC239	AC	270789	7134725	550	80
AC240	AC	270837	7134740	550	80
AC241	AC	270885	7134755	550	80
AC242	AC	269674	7134149	550	80
AC243	AC	269769	7134179	550	80
AC244	AC	269864	7134210	550	80
AC245	AC	269960	7134240	550	80
AC246	AC	270055	7134271	550	80
AC247	AC	270150	7134301	550	80
AC248	AC	270245	7134332	550	80
AC249	AC	270341	7134362	550	80
AC250	AC	270436	7134393	550	80
AC251	AC	270531	7134423	550	80
AC252	AC	270626	7134454	550	80
AC253	AC	270722	7134484	550	80
AC254	AC	270817	7134515	550	80
AC255	AC	270912	7134545	550	80
AC256	AC	271007	7134576	550	80
AC257	AC	271102	7134606	550	80
AC258	AC	271198	7134637	550	80
AC259	AC	271293	7134667	550	80
AC260	AC	271388	7134698	550	80
AC261	AC	271483	7134728	550	80
AC262	AC	271579	7134759	550	80
AC263	AC	271674	7134789	550	80
AC264	AC	271769	7134820	550	80
AC265	AC	271864	7134850	550	80
AC266	AC	271960	7134881	550	80
AC267	AC	272055	7134911	550	80
AC268	AC	272150	7134942	550	80
AC269	AC	272245	7134972	550	80
AC270	AC	269597	7133703	550	80
AC271	AC	269692	7133734	550	80
AC272	AC	269788	7133764	550	80
AC273	AC	269883	7133795	550	80

For personal use only

Planned ID	Hole Type	Coordinates (MGA94 Zone 51)			Planned Depth (m)
		Easting	Northing	RL (m)	
AC274	AC	269978	7133825	550	80
AC275	AC	270073	7133856	550	80
AC276	AC	270169	7133886	550	80
AC277	AC	270264	7133917	550	80
AC278	AC	270359	7133947	550	80
AC279	AC	270454	7133978	550	80
AC280	AC	270549	7134008	550	80
AC281	AC	270645	7134039	550	80
AC282	AC	270740	7134069	550	80
AC283	AC	270788	7134084	550	80
AC284	AC	270835	7134100	550	80
AC285	AC	270883	7134115	550	80
AC286	AC	270930	7134130	550	80
AC287	AC	270978	7134145	550	80
AC288	AC	271026	7134161	550	80
AC289	AC	271121	7134191	550	80
AC290	AC	271216	7134222	550	80
AC291	AC	271311	7134252	550	80
AC292	AC	271407	7134283	550	80
AC293	AC	271502	7134313	550	80
AC294	AC	271597	7134343	550	80
AC295	AC	271692	7134374	550	80
AC296	AC	271788	7134404	550	80
AC297	AC	271883	7134435	550	80
AC298	AC	271978	7134465	550	80
AC299	AC	272073	7134496	550	80
AC300	AC	272169	7134526	550	80
AC301	AC	272264	7134557	550	80
AC302	AC	272359	7134587	550	80
AC303	AC	272454	7134618	550	80
AC304	AC	272549	7134648	550	80
AC305	AC	272645	7134679	550	80
AC306	AC	271060	7133749	550	80
AC307	AC	271107	7133765	550	80
AC308	AC	271155	7133780	550	80
AC309	AC	271203	7133795	550	80
AC310	AC	271250	7133811	550	80
AC311	AC	271298	7133826	550	80
AC312	AC	271393	7133856	550	80
AC313	AC	271488	7133887	550	80
AC314	AC	271584	7133917	550	80
AC315	AC	271679	7133948	550	80
AC316	AC	271774	7133978	550	80
AC317	AC	271869	7134009	550	80
AC318	AC	271964	7134039	550	80
AC319	AC	272060	7134070	550	80
AC320	AC	272155	7134100	550	80
AC321	AC	272250	7134131	550	80
AC322	AC	272345	7134162	550	80
AC323	AC	272441	7134192	550	80
AC324	AC	272536	7134223	550	80
AC325	AC	272631	7134253	550	80
AC326	AC	272726	7134284	550	80
AC327	AC	272821	7134314	550	80
AC328	AC	272917	7134345	550	80

For personal use only

Planned ID	Hole Type	Coordinates (MGA94 Zone 51)			Planned Depth (m)
		Easting	Northing	RL (m)	
AC329	AC	273012	7134375	550	80
AC330	AC	272238	7133934	550	80
AC331	AC	272330	7133963	550	80
AC332	AC	272428	7133994	550	80
AC333	AC	272320	7133752	550	80
AC334	AC	272415	7133782	550	80
AC335	AC	272511	7133812	550	80
AC336	AC	272606	7133842	550	80
AC337	AC	272702	7133872	550	80
AC338	AC	272797	7133902	550	80
AC339	AC	272892	7133932	550	80
AC340	AC	272641	7133645	550	80
AC341	AC	272736	7133675	550	80
AC342	AC	272832	7133705	550	80
AC343	AC	272927	7133735	550	80
AC344	AC	272390	7133358	550	80
AC345	AC	272485	7133388	550	80
AC346	AC	272580	7133418	550	80
AC347	AC	272676	7133448	550	80
AC348	AC	272771	7133478	550	80
AC349	AC	272866	7133508	550	80
AC350	AC	272962	7133538	550	80
AC351	AC	273057	7133569	550	80
AC352	AC	273152	7133599	550	80
AC353	AC	273248	7133629	550	80
AC354	AC	273343	7133659	550	80
AC355	AC	273438	7133689	550	80
AC356	AC	272949	7133326	550	80
AC357	AC	273044	7133356	550	80
AC358	AC	273139	7133387	550	80
AC359	AC	273235	7133417	550	80
AC360	AC	273330	7133447	550	80
AC361	AC	273378	7133462	550	80
AC362	AC	273426	7133477	550	80
AC363	AC	273473	7133492	550	80
AC364	AC	273521	7133507	550	80
AC365	AC	273569	7133522	550	80
AC366	AC	273616	7133537	550	80
AC367	AC	273664	7133552	550	80
AC368	AC	273712	7133567	550	80
AC369	AC	273127	7133175	550	80
AC370	AC	273222	7133205	550	80
AC371	AC	273317	7133235	550	80
AC372	AC	273413	7133265	550	80
AC373	AC	273508	7133295	550	80
AC374	AC	273556	7133310	550	80
AC375	AC	273603	7133325	550	80
AC376	AC	273651	7133340	550	80
AC377	AC	273699	7133355	550	80
AC378	AC	273746	7133370	550	80
AC379	AC	273794	7133385	550	80
AC380	AC	273842	7133400	550	80
AC381	AC	273352	7133037	550	80
AC382	AC	273447	7133068	550	80
AC383	AC	273543	7133098	550	80

For personal use only

Planned ID	Hole Type	Coordinates (MGA94 Zone 51)			Planned Depth (m)
		Easting	Northing	RL (m)	
AC384	AC	273638	7133128	550	80
AC385	AC	273734	7133158	550	80
AC386	AC	273829	7133188	550	80
AC387	AC	273877	7133203	550	80
AC388	AC	273924	7133218	550	80
AC389	AC	273972	7133233	550	80
AC390	AC	274020	7133248	550	80
AC391	AC	273578	7132901	550	80
AC392	AC	273673	7132931	550	80
AC393	AC	273768	7132961	550	80
AC394	AC	273864	7132991	550	80
AC395	AC	273959	7133021	550	80
AC396	AC	274054	7133051	550	80
AC397	AC	274150	7133081	550	80
AC398	AC	274245	7133111	550	80
AC399	AC	273851	7132779	550	80
AC400	AC	273946	7132809	550	80
AC401	AC	274041	7132839	550	80
AC402	AC	274137	7132869	550	80
AC403	AC	274232	7132899	550	80
AC404	AC	274327	7132930	550	80
AC405	AC	274423	7132960	550	80
AC406	AC	274518	7132990	550	80
AC407	AC	274028	7132627	550	80
AC408	AC	274124	7132657	550	80
AC409	AC	274219	7132687	550	80
AC410	AC	274315	7132717	550	80
AC411	AC	274410	7132747	550	80
AC412	AC	274505	7132778	550	80
AC413	AC	274601	7132808	550	80
AC414	AC	274696	7132838	550	80
AC415	AC	274791	7132868	550	80
AC416	AC	274349	7132520	550	80
AC417	AC	274445	7132550	550	80
AC418	AC	274540	7132581	550	80
AC419	AC	274635	7132611	550	80
AC420	AC	274731	7132641	550	80
AC421	AC	274826	7132671	550	80
AC422	AC	274921	7132701	550	80
AC423	AC	275017	7132731	550	80
AC424	AC	274623	7132398	550	80
AC425	AC	274718	7132429	550	80
AC426	AC	274813	7132459	550	80
AC427	AC	274909	7132489	550	80
AC428	AC	275004	7132519	550	80
AC429	AC	275099	7132549	550	80
AC430	AC	274896	7132277	550	80
AC431	AC	274991	7132307	550	80
AC432	AC	275086	7132337	550	80
AC433	AC	275182	7132367	550	80
AC434	AC	268724	7135525	550	80
AC435	AC	269041	7136049	550	80
AC436	AC	268945	7136019	550	80
AC437	AC	268850	7135989	550	80
AC438	AC	268755	7135959	550	80

For personal use only

Planned ID	Hole Type	Coordinates (MGA94 Zone 51)			Planned Depth (m)
		Easting	Northing	RL (m)	
AC439	AC	268659	7135929	550	80
AC440	AC	268564	7135898	550	80
AC441	AC	268880	7136414	550	80
AC442	AC	268785	7136383	550	80
AC443	AC	268690	7136353	550	80
AC444	AC	268594	7136323	550	80
AC445	AC	268499	7136292	550	80
AC446	AC	268404	7136262	550	80
AC447	AC	268402	7136683	550	80
AC448	AC	268306	7136652	550	80
AC449	AC	268211	7136622	550	80
AC450	AC	267868	7136933	550	80
AC451	AC	269014	7135195	550	80
AC452	AC	272285	7133949	550	80
AC453	AC	272381	7133979	550	80
AC454	AC	272463	7133797	550	80
AC455	AC	272558	7133827	550	80
AC456	AC	272689	7133660	550	80
AC457	AC	272784	7133690	550	80
AC458	AC	272879	7133720	550	80
AC459	AC	272975	7133750	550	80
AC460	AC	272996	7133341	550	80
AC461	AC	273400	7133052	550	80
AC462	AC	273495	7133083	550	80
AC463	AC	273591	7133113	550	80
AC464	AC	273625	7132916	550	80
AC465	AC	273721	7132946	550	80
AC466	AC	273816	7132976	550	80
AC467	AC	272012	7134055	550	80
AC468	AC	272107	7134085	550	80
AC469	AC	272203	7134116	550	80
AC470	AC	272298	7134146	550	80
AC471	AC	271882	7134238	550	80
AC472	AC	271930	7134253	550	80
AC473	AC	271977	7134268	550	80
AC474	AC	272025	7134283	550	80
AC475	AC	272073	7134298	550	80
AC476	AC	272120	7134313	550	80
AC477	AC	271722	7134805	550	80
AC478	AC	271817	7134835	550	80
AC479	AC	271912	7134866	550	80
AC480	AC	271600	7134980	550	80
AC481	AC	271648	7134995	550	80
AC482	AC	271695	7135010	550	80
AC483	AC	271743	7135025	550	80
AC484	AC	271791	7135040	550	80
AC485	AC	271838	7135056	550	80
AC486	AC	271292	7135087	550	80
AC487	AC	271387	7135117	550	80
AC488	AC	271482	7135148	550	80
AC489	AC	271578	7135178	550	80
AC490	AC	272168	7134328	550	80
AC491	AC	271813	7134631	550	80
AC492	AC	271860	7134647	550	80
AC493	AC	271908	7134662	550	80

For personal use only

Planned ID	Hole Type	Coordinates (MGA94 Zone 51)			Planned Depth (m)
		Easting	Northing	RL (m)	
AC494	AC	271956	7134677	550	80
AC495	AC	272003	7134692	550	80
AC496	AC	272051	7134707	550	80
AC497	AC	272099	7134722	550	80
AC498	AC	272007	7134896	550	80
AC499	AC	273092	7133372	550	80
AC500	AC	271102	7135239	550	80
AC501	AC	271197	7135269	550	80
AC502	AC	271292	7135299	550	80
AC503	AC	271388	7135329	550	80
AC504	AC	271483	7135359	550	80
AC505	AC	271578	7135389	550	80
AC506	AC	270727	7133643	550	80
AC507	AC	270536	7133582	550	80
AC508	AC	270346	7133521	550	80
AC509	AC	270155	7133459	550	80
AC510	AC	270250	7133490	550	80
AC511	AC	270441	7133551	550	80
AC512	AC	270631	7133612	550	80
AC513	AC	270822	7133673	550	80
AC514	AC	270917	7133704	550	80
AC515	AC	271012	7133734	550	80
AC516	AC	273174	7133190	550	80
AC517	AC	273270	7133220	550	80
AC518	AC	273365	7133250	550	80
AC519	AC	273460	7133280	550	80
AC520	AC	273936	7132596	550	80
AC521	AC	274255	7132488	550	80
AC522	AC	271006	7135209	550	80
AC523	AC	274801	7132246	550	80
AC524	AC	273755	7132749	550	80
AC525	AC	271626	7134774	550	80
AC526	AC	270889	7135587	550	80
AC527	AC	270984	7135617	550	80
AC528	AC	271080	7135648	550	80
AC529	AC	271175	7135678	550	80
AC530	AC	271270	7135708	550	80
AC531	AC	271366	7135738	550	80
AC532	AC	271461	7135768	550	80
AC533	AC	270937	7135602	550	80
AC534	AC	271032	7135633	550	80
AC535	AC	271127	7135663	550	80
AC536	AC	270881	7135376	550	80
AC537	AC	270977	7135407	550	80
AC538	AC	271072	7135437	550	80
AC539	AC	271167	7135468	550	80
AC540	AC	271262	7135498	550	80
AC541	AC	271054	7135224	550	80
AC542	AC	271149	7135254	550	80
AC543	AC	271245	7135284	550	80
AC544	AC	271340	7135314	550	80
AC545	AC	270958	7135194	550	80
AC546	AC	271223	7135693	550	80
AC547	AC	270841	7135572	550	80
AC548	AC	270388	7134377	550	80

For personal use only

Planned ID	Hole Type	Coordinates (MGA94 Zone 51)			Planned Depth (m)
		Easting	Northing	RL (m)	
AC549	AC	270483	7134408	550	80
AC550	AC	270579	7134438	550	80

For personal use only