

Wilgeena Soil Sampling Commences

Highlights

- Solara Minerals has begun an Ultrafine® soil sampling program to define structural trends that control gold at Wilgeena.
- Soil sampling will focus on the Peak Hill Schist, host to the Hermes South (114koz @ 1.2g/t)¹ and Peak Hill deposits (481koz @ 1.6g/t)².
- Anomalous gold >100ppb Au identified in historic air core drilling across the Wilgeena project area within the Naracoota Volcanics³.
- Sampling grids across the Peak Hill Schist will help to identify trends controlling gold.
- Low impact two (2) week program to support drill planning.

Solara Minerals Ltd (ASX: SLA) (Solara or the Company) is pleased to announce the immediate commencement of a high-resolution soil geochemistry survey at the Wilgeena West Project (E52/4369).

This focused campaign is designed to convert project anomalism (see Figure 2) into **drill-ready targets** by mapping the structural controls of gold mineralisation across the Peak Hill Schist and into the Karalundi/Naracoota Volcanics. VTEM anomalies identified within the Peak Hill Schist may indicate gold anomalism through an association with sulphides in the hinges of folds (Figure 3).

The soil sampling can help vector in on prospective targets for drill testing.

Commenting on the sampling Executive Director Tony Rovira stated:

"By deploying a modern geochemical approach, we are directly addressing the structural controls of gold mineralisation within the Peak Hill Schist, in proximity to substantial deposits.

The CSIRO Ultrafine® sampling (**UFF**) is fast becoming an industry standard to provide vectors to blind targets we previously could only identify and assess through drilling."

¹ Refer to Alchemy Resources Ltd's ASX announcement dated 8 May 2019

² Refer to Westgold Resources Ltd's ASX announcement dated 16 September 2024

³ Refer to SLA ASX announcement dated 27 August 2025



Figure 1. Soil sampling begins at Wilgeena to support drill targeting.

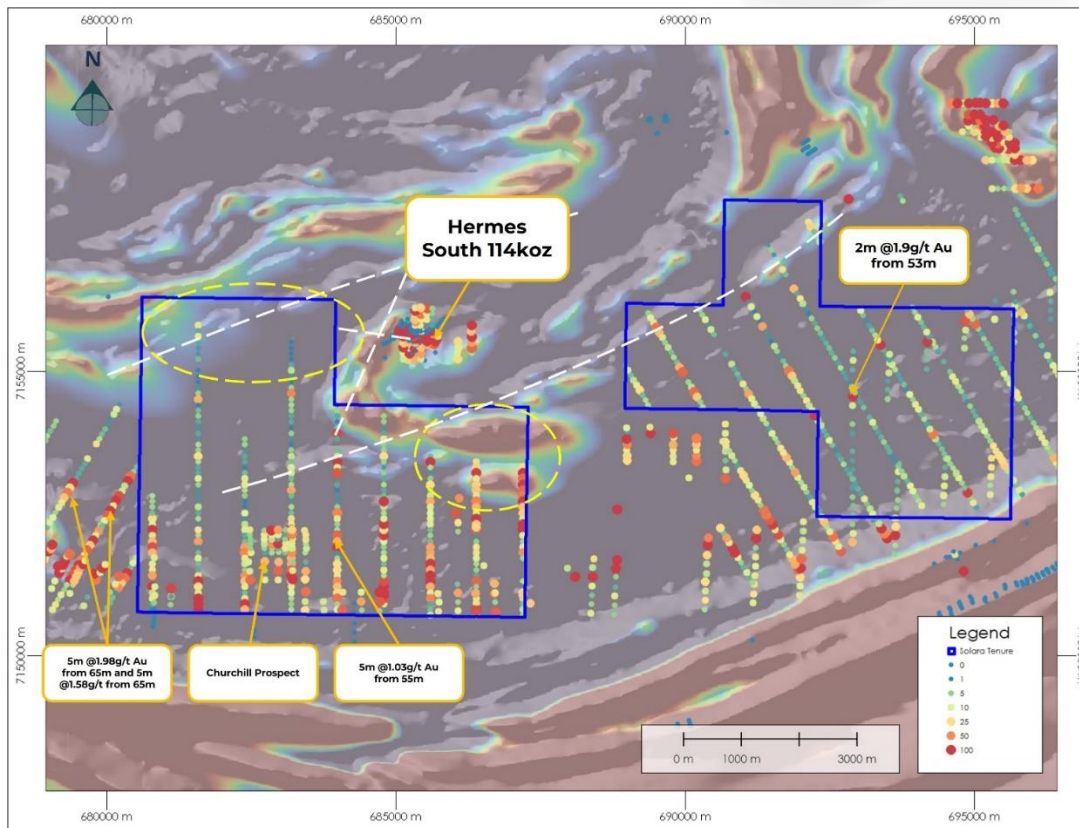


Figure 2. Airborne Magnetic Reduced to Poles (RTP) showing Au (ppb), most air core holes were 5m composites. Historically, only 5 RC holes were drilled on E52/4369 and 1 RC hole drilled on E52/4370.

For personal use only

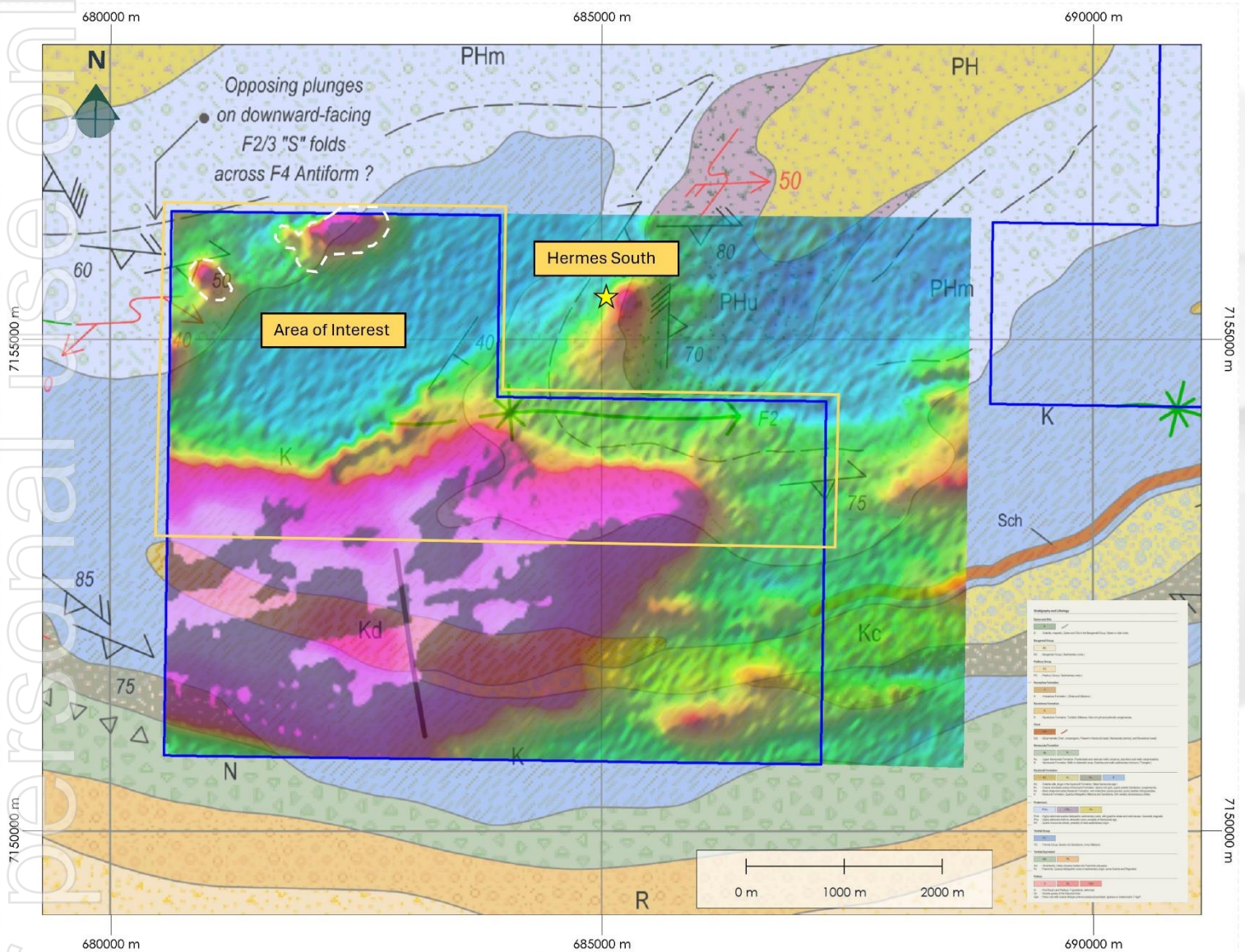


Figure 3. Outhwaite, 2012 simplified Degrussa-Peak Hill-Horseshoe Lights mapping overlain with VTEM channel 30 shows details of recumbent folding within the Peak Hill Schist.

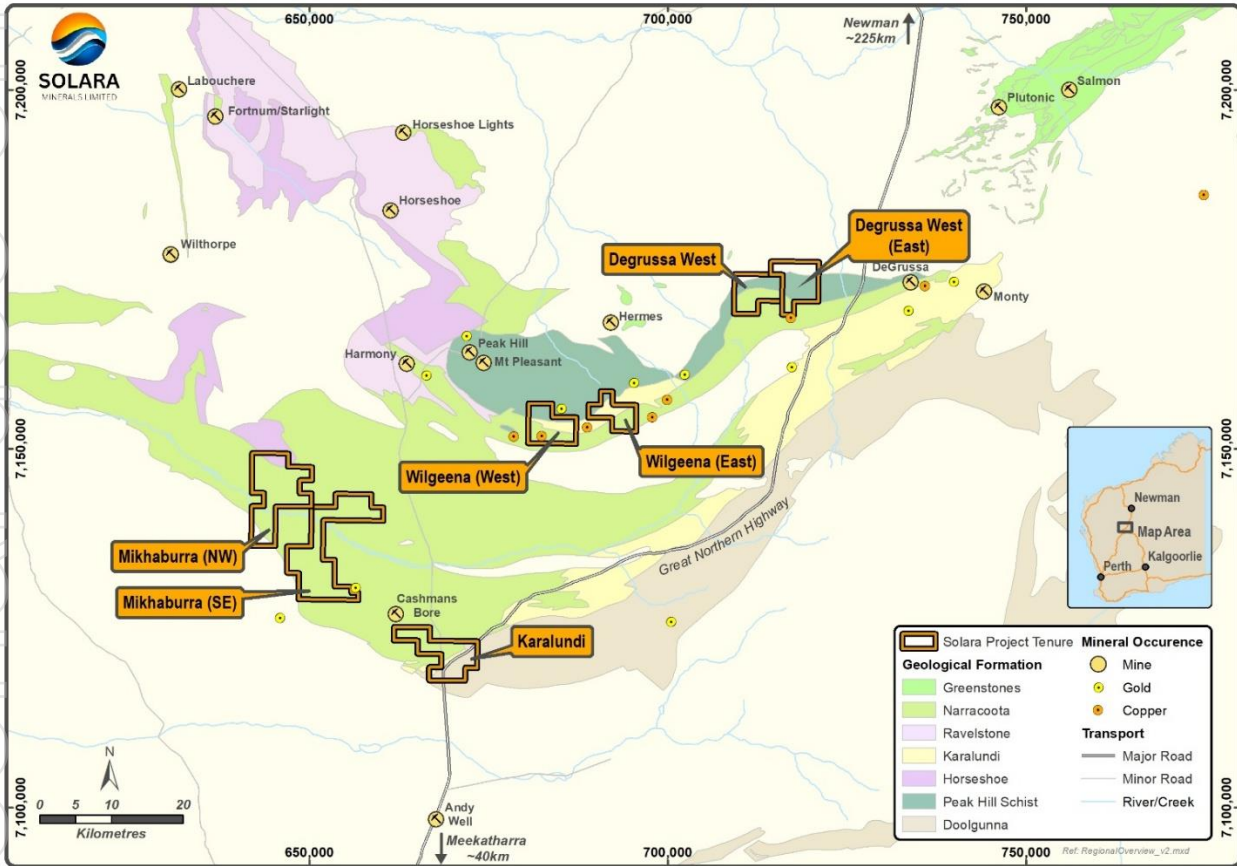


Figure 4. Overview of Solara's Bryah Basin project areas.

Next Steps at Wilgeena

- Execute heritage agreement with the Jidi Jidi people.
- Once results from survey are received, identify follow up drill targets.

References

Outhwaite, M. 2012. Degruusa – Peak Hill – Horseshoe Lights Geology Mapping. 1:100,000 Geological Series for Alchemy Resources (Open Source), Jigsaw Geoscience, June 2010.

This announcement has been authorised for release by the Board of Directors of Solara Minerals Ltd.

- ENDS -

For enquiries:

James Robinson – Executive Director
Solara Minerals Limited
T: +61 8 6188 8181
E: admin@solaraminerals.com.au

For additional information please visit our website at www.solaraminerals.com.au.

Table 1 - Tenement Register

Project	Tenement	Holder(s)	Location	Expiry Date	Status	Area	Area (sqkm)
Wilgeena (West)	E52/4369	OD4 Tom Price Pty Ltd*	WA	25 Sep 2029	Live	10	31.0
Wilgeena (East)	E52/4370	OD4 Tom Price Pty Ltd*	WA	25 Sep 2029	Live	7	21.7

*OD4 Tom Price Pty Ltd is a wholly owned subsidiary of Solara Minerals Ltd.

Cautionary Statement

This announcement and information, opinions or conclusions expressed in the course of this announcement contains forecasts and forward-looking information. Such forecasts, projections and information are not a guarantee of future performance and involve unknown risks and uncertainties. Actual results and developments will almost certainly differ materially from those expressed or implied. There are a number of risks, both specific to Solara, and of a general nature which may affect the future operating and financial performance of Solara, and the value of an investment in Solara including and not limited to title risk, renewal risk, economic conditions, stock market fluctuations, commodity demand and price movements, timing of access to infrastructure, timing of environmental approvals, regulatory risks, operational risks, reliance on key personnel, reserve estimations, native title risks, cultural heritage risks, foreign currency fluctuations, and mining development, construction and commissioning risk.