

# ASX Announcement

9 October 2025

## High-grade copper samples up to 22.5% Cu over 9km strike at Cromwell

### Key Highlights:

- A previously unrecognised, district-scale copper mineralisation zone has been identified at the Cromwell prospect, with rock sample results of up to 22.5% Cu.
- Mapping and sampling have outlined a series of mineralised structures extending up to 9km long and 30m wide all remaining open along strike.
- 81 rock chip samples were collected, with ~17% and ~36% of the samples returning copper values above 2% Cu and 1% Cu, respectively
- Ongoing exploration activities are planned, including additional mapping and sampling, as well as soil geophysical surveys, to further refine targets within the Cromwell shear zones.

**Antares Metals Ltd (ASX: AM5) (Antares, AM5 or the Company)** is pleased to announce the discovery of large-scale shear and vein-hosted copper mineralisation within the Company's Mount Isa North Project, stretching for over nine kilometres and with rock chip samples returning copper grades up to 22.5% Cu.

Recent exploration activities have discovered a series of previously unidentified, north-south-trending shear zones along a large splay fault branching from the major Paroo fault. AM5 has mapped and sampled the shear over 9 kilometres of strike length, and it remains open with widths of up to 30 metres.

Surface rock-chip sampling has returned **copper grades up to 22% Cu**. The structural and geological corridor hosting the target extends for 20 kilometres within the Company's project area.

### Chief Executive Officer, Johan Lambrechts, commented:

*AM5's commitment to targeted field activities and "Out of the box" thinking has led to the discovery of a 9km long mineralised structural corridor at the Cromwell prospect. The discovery was made by field geologists making critical observations that led to the identification of a district-scale mineralised area not previously identified. The subsequent set of excellent sample results reveals the fantastic potential of the Cromwell prospect and the large scale of the mineralisation footprint. Cromwell certainly warrants further field and geophysical activities to identify potential mineralisation "hot spots".*

*We look forward to providing further updates as we progress exploration across all our tenement holdings.*

**ANTARES**  
**METALS LIMITED**  
**ASX: AM5**

SOI: 514.8M  
Share Price: \$0.009  
Market Cap: \$4.6M  
Cash: \$1.3M (30 June 25)

### DIRECTORS & MANAGEMENT

**Mark Connelly**  
NE Chairman

**Johan Lambrechts**  
CEO

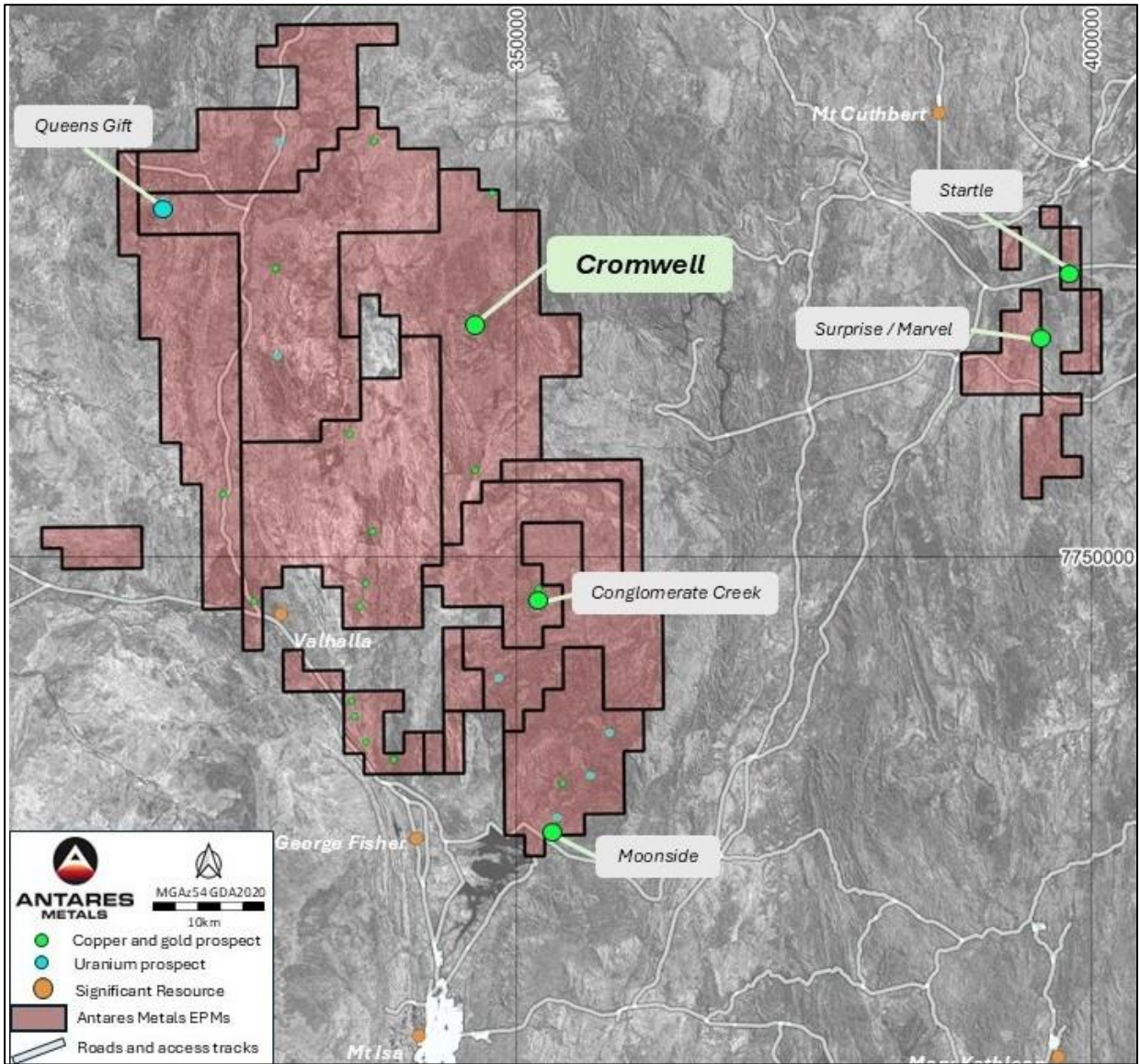
**Bruno Seneque**  
NE Director

**Richard Maddocks**  
NE Director

**Suzie Foreman**  
CFO & CoSec

### CONTACT

Level 1, 43 Ventnor Ave,  
West Perth, WA, 6005  
info@antaresmetals.com.au  
antaresmetals.com.au



**Figure 1:** Prospects undergoing reconnaissance activities within the AM5 Mt Isa North Copper and Uranium Project

### Cromwell Prospect

Previous exploration in the Mt Isa North area has focused on identifying Mt Isa-style deposits within similar host shale units, and only minimal surface sampling and prospect-scale mapping have been completed within the basalts around Cromwell. The metamorphosed basalts are known to have high background copper (around 200 ppm, Gregory 2005<sup>1</sup>) and have been proposed by various works as the possible source for copper within the Mt Isa orebody (e.g. Gregory 2006<sup>2</sup>).

AM5 collected 81 rock chip samples from the Cromwell Prospect, with assay results including copper values up to 22.5% Cu, and 36% of the samples returned copper values above 1% Cu. Table 1 below tabulates to top ten sample results received from the Cromwell prospect.

<sup>1</sup> *Platinum-group element geochemistry of the Eastern Creek Volcanics, Mount Isa, Australia. (2005)*

<sup>2</sup> *Copper mobility in the Eastern Creek Volcanics, Mount Isa, Australia: evidence from laser ablation ICP-MS of iron-titanium oxides. (2006)*

**Table 1:** Table of the top ten sample results from the Cromwell Prospect

Sample ID	Easting	Northing	Cu (%)	Au (ppb)	Ag (ppm)	Bi (ppm)	Mo (ppm)
ASR0114	346679	7770108	22.5	190	0.7	0.4	1.6
ASR0214	348476	7764290	11.1	50	0.8	2	4
ASR0209	348484	7764045	5.8	50	2.1	66	3
ASR0141	347519	7770046	4.8	40	2	0.3	5.5
ASR0205	348530	7765391	4.3	100	44	104	7
ASR0137	345656	7771027	4.2	100	0.8	3.5	0.8
ASR0163	348531	7765517	3.4	120	9.1	43	1
ASR0216	348492	7764296	3.3	20	1.6	40	2
ASR0111	346711	7770018	3.2	70	4.1	0.8	3.7
ASR0098	345639	7770978	2.8	100	1	112	1

While exploring a large east-west-trending quartz breccia vein, AM5 geologists noted that visible copper oxides occur only where the breccia veins intersect shear structures parallel to the primary layering in the basalt. The same relationship was observed at the Gunpowder Creek prospect, located 10km north of Cromwell. As a result, regional traverses across basalt layering were completed, and a series of mineralised shear zones of varying scale and mineralisation intensity were discovered, none of which had been detected by previous explorers or early prospectors. These shear zones have been initially given alphabetic naming of “A”, “B”, “C” and “D” to distinguish between them.

The largest of the shear zones is the easternmost Cromwell “A” zone, which has now been mapped and sampled over 9km of strike, and it remains open at both ends, while some areas are obscured by alluvium/colluvium. Cromwell A varies in width from a few metres to approximately 30m, but is generally between 15-20m wide and includes several quartz or quartz-carbonate veins, varying in width from a few centimetres to three meters. Copper is observed as malachite with lesser chalcocite, chrysocolla and cuprite. Occasional fresh sulphides are observed, and the quartz veins often exhibit abundant iron oxide and intense vuggy/boxwork vein textures, indicating that significant sulphide is present in the system. Of the 81 samples collected on the Cromwell prospect, 29 returned assay results above 1% Cu.

The Company is excited by the scale of the mineralisation uncovered at Cromwell, and believes that it represents a potential district-scale structure with immense mineralisation opportunity. An essential aspect of the mineralisation at Cromwell is that the basalt shear fabric itself can be



well-mineralised with disseminated copper oxide aggregates and/or stockwork quartz veins. This enhances the potential of this prospect by not limiting the mineralised units to the veins, but including the sheared host, thereby increasing the potential mineralised volume.

*Visual estimates of mineral abundance should never be considered a proxy or substitute for laboratory analyses where concentrations or grades are the factor of principal economic interest. Visual estimates also potentially provide no information regarding impurities or deleterious physical properties relevant to valuations.*

**Figure 2:** Quartz-chalcocite filled vugs in Cromwell A shear zone with malachite rosettes ( $\pm 5-12\%$  visual est.) intergrown with chalcocite ( $\pm 2-4\%$  visual est.) [assay not yet received]

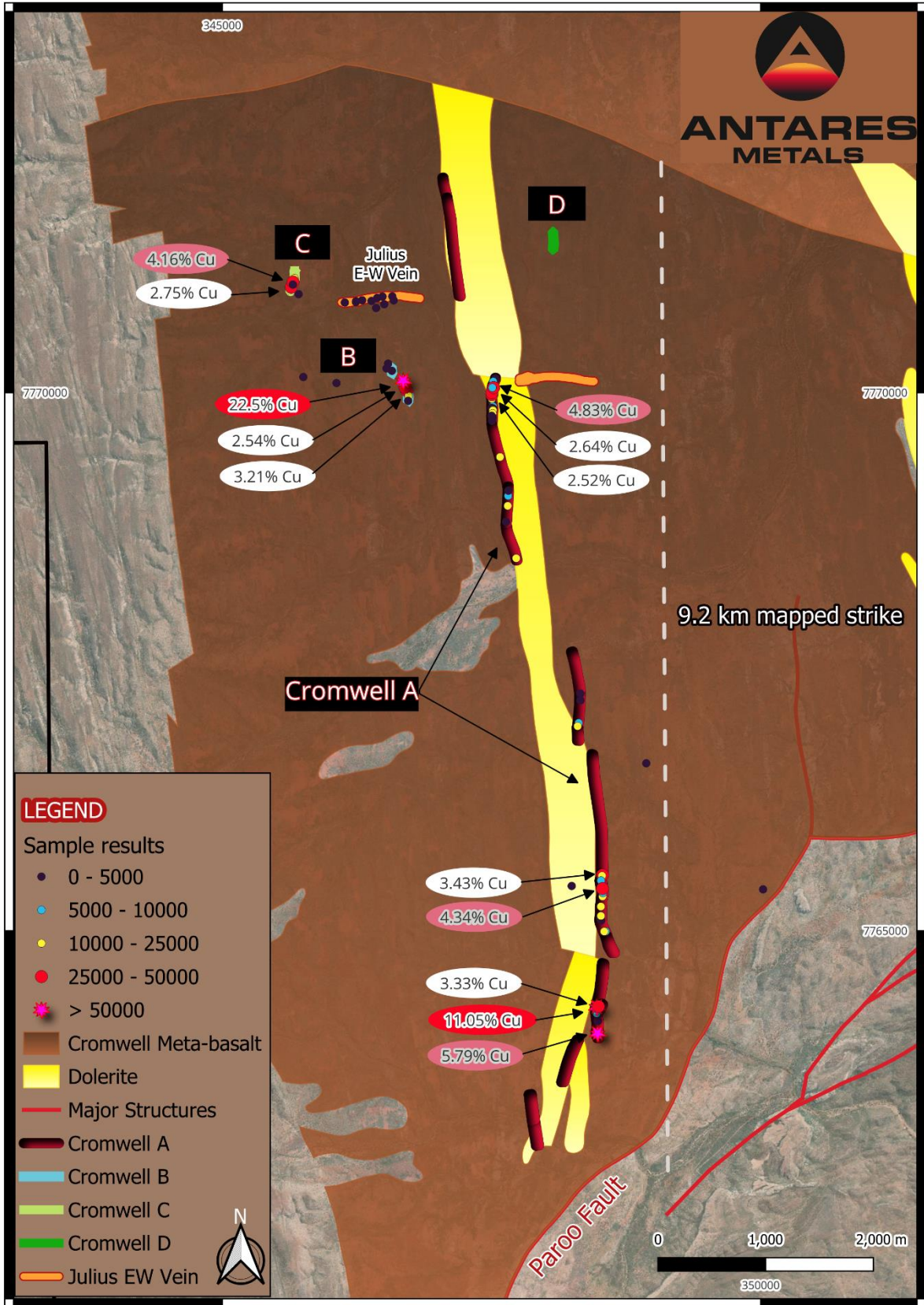


Figure 3: Map of the Cromwell prospect and mineralised shear zones "A", "B", "C" & "D".

A visual characteristic of the Cromwell mineralisation is that copper oxide mineralisation is rarely visible on the exterior of the rocks and thus remains invisible to casual observation. This makes the identification of this mineralisation challenging in the field and will be the main reason why prior explorers and earlier prospectors have missed it.

### **Future activities**

Soil surveys may be able to detect the mineralised shear zones beneath cover, and such surveys are being considered for the near future. Future work at Cromwell will also require geophysics to help define potential mineral traps or higher-grade zones within the known structures, as well as to generate additional targets within the large metabasalt block. Airborne gravity/magnetics and detailed electrical survey techniques are under consideration.

Field teams continue to review, map and sample prospects as they continually update and improve the ranking and project phase of the various targets and prospects. The Company will continue to advance the status of its prospects through continual and systematic exploration.

**-ENDS-**

This announcement has been approved for release by the Board of Antares Metals Limited.

### **Enquiries:**

Johan Lambrechts  
Chief Executive Officer  
Antares Metals Limited  
E: [johan@antaresmetals.com.au](mailto:johan@antaresmetals.com.au)

### **References**

Gregory, M.J., Keays, R.R., Wilde, A.R. (2005). *Platinum-group element geochemistry of the Eastern Creek Volcanics, Mount Isa, Australia. In: Mineral Deposit Research: Meeting the Global Challenge. Springer, Berlin, Heidelberg.*  
Gregory, M.J. *Copper mobility in the Eastern Creek Volcanics, Mount Isa, Australia: evidence from laser ablation ICP-MS of iron-titanium oxides. Miner Deposita 41, 691–711 (2006)*

### Competent Person Statement:

The information in this report that relates to Exploration activities and Exploration Results has been approved by Mr. Matthew Porter, a Competent Person who is a member of The Australasian Institute of Geoscientists and is the Exploration Manager of Antares Metals Limited.

Mr Porter has sufficient experience that is relevant to the style of mineralisation and type of deposit under consideration and to the activity being undertaken to qualify as a Competent Person as defined in the 2012 Edition of the 'Australasian Code for Reporting of Exploration Results, Mineral Resources and Ore Reserves'. Mr Porter consents to the inclusion in the report of the matters based on his information in the form and context in which it appears.

## About Antares Metals

Antares Metals is a multi-commodity, Australian-focused explorer with two district-scale exploration hubs. The company employs modern exploration methods and models to deliver cost-effective programs focused on discovery.

### Mt Isa North Cu-U Project (Queensland)

- ▶ **Tenure:** 2,003 km<sup>2</sup> of prime land near Glencore's Mt Isa Operations
- ▶ **Target Commodities:** Cu (Copper), Zn (Zinc), Ag (Silver), Pb (Lead), U<sub>3</sub>O<sub>8</sub> (Uranium), and REE (Rare Earth Elements)
- ▶ **Exploration:** Area has limited historical exploration
- ▶ **Methodology:** Will apply modern exploration models and techniques



ASX:AM5  
antaresmetals.com.au

## Appendix 1 - JORC Code, 2012 Edition – Table 1

### Section 1 Sampling Techniques and Data

(Criteria in this section apply to all succeeding sections.)

Criteria	JORC Code Explanation	Commentary
Sampling techniques	<p><b>Nature and quality</b> of sampling (e.g., cut channels, random chips, or specific specialised industry standard measurement tools appropriate to the minerals under investigation, such as down hole gamma sondes, or handheld XRF instruments, etc.). These examples should not be taken as limiting the broad meaning of sampling. Include reference to measures taken to ensure sample <b>representivity</b> and the appropriate <b>calibration</b> of any <b>measurement tools</b> or systems used. Aspects of the determination of mineralisation that are Material to the Public Report.</p>	<p><b>2025 Rock Chip Sampling</b></p> <ul style="list-style-type: none"> <li>81 Rock Chips are reported.</li> </ul> <p><b>Sample Representativity</b></p> <ul style="list-style-type: none"> <li>5 rock chips, constituting one sample, were collected from each outcrop for lab submission.</li> <li>Industry-standard practice was used in the processing of samples for assay.</li> </ul> <p><b>Assaying</b></p> <ul style="list-style-type: none"> <li>Samples were submitted to an ISO certified commercial laboratory in Mt Isa, QLD.</li> <li>Sample preparation comprised drying and pulverisation prior to analysis.</li> <li>Samples were submitted for multi-element analysis by lab code MA100, MA101, MA102, Multi-acid digest including Hydrofluoric, Nitric, Perchloric and Hydrochloric acids.</li> <li>Au was analysed by lab code FA001, 50g Lead collection fire assay (silver used as secondary collector).</li> </ul>
Drilling techniques	<p>Drill type (e.g., core, reverse circulation, open-hole hammer, rotary air blast, auger, Bangka, sonic, etc.) And details (e.g., core diameter, triple or standard tube, depth of diamond tails, face-sampling bit or other type, whether core is oriented and if so, by what method, etc.).</p>	<ul style="list-style-type: none"> <li>No drill results or drilling is discussed in this announcement.</li> </ul>
Drill sample recovery	<p>Method of recording and assessing core and chip sample recoveries and results assessed. Measures taken to maximise sample recovery and ensure representative nature of the samples. Whether a relationship exists between sample recovery and grade and whether sample bias may have occurred due to preferential loss/gain of fine/coarse material.</p>	<ul style="list-style-type: none"> <li>All samples discussed in this announcement are rock samples, 100% of which were collected and sent for assay analysis.</li> </ul>
Logging	<p>Whether core and chip samples have been geologically and geotechnically logged to a level of detail to support appropriate Mineral Resource estimation, mining studies and metallurgical studies. Whether logging is qualitative or quantitative in nature. Core (or costean, channel, etc.) Photography. The total length and percentage of the relevant intersections logged.</p>	<ul style="list-style-type: none"> <li>The rock chips were geologically described with alteration, mineralisation and other observations such as colour.</li> <li>Samples were sent for laboratory testing</li> </ul>

Criteria	JORC Code Explanation	Commentary
<b>Sub-sampling techniques and sample preparation</b>	<p>If core, whether cut or sawn and whether quarter, half or all core taken.</p> <p>If non-core, whether riffled, tube sampled, rotary split, etc. And whether sampled wet or dry.</p> <p>For all sample types, the nature, quality and appropriateness of the sample preparation technique.</p> <p>Quality control procedures adopted for all sub-sampling stages to maximise representivity of samples.</p> <p>Measures taken to ensure that the sampling is representative of the in-situ material collected, including for instance results for field duplicate/second-half sampling.</p> <p>Whether sample sizes are appropriate to the grain size of the material being sampled.</p>	<ul style="list-style-type: none"> <li>• No sub-sampling techniques were used.</li> <li>• 5 rock chips, constituting one sample, were collected from each outcrop to represent the average grade of the outcrop best and were sent for laboratory assay.</li> <li>• Industry-standard practice was used in the processing of samples for assay.</li> <li>• Samples were sent for laboratory testing</li> </ul>
<b>Quality of assay data and laboratory tests</b>	<p>The nature, quality and appropriateness of the assaying and laboratory procedures used and whether the technique is considered partial or total.</p> <p>For geophysical tools, spectrometers, handheld XRF instruments, etc., the parameters used in determining the analysis including instrument make and model, reading times, calibrations factors applied and their derivation, etc.</p> <p>Nature of quality control procedures adopted (e.g., standards, blanks, duplicates, external laboratory checks) and whether acceptable levels of accuracy (i.e., lack of bias) and precision have been established.</p>	<ul style="list-style-type: none"> <li>• All samples were submitted to ALS in Mt Isa.</li> <li>• The samples were sorted, wet-weighed, dried, and then weighed again. Primary preparation involved crushing and splitting the sample with a riffle splitter where necessary to obtain a pulverised sub-fraction in a vibrating pulveriser. All coarse residues have been retained.</li> <li>• Samples were submitted for multi-element analysis by lab code MA100, MA101, MA102, Multi-acid digest including Hydrofluoric, Nitric, Perchloric and Hydrochloric acids</li> <li>• The samples have been analysed by a 50g lead collection fire assay as well as multi-acid digest with an Inductively Coupled Plasma (ICP) Optical Emission Spectrometry finish for multiple elements</li> <li>• The lab randomly inserts analytical blanks, standards and duplicates into the client sample batches for laboratory QAQC performance monitoring.</li> </ul>
<b>Verification of sampling and assaying</b>	<p>The verification of significant intersections by either independent or alternative company personnel.</p> <p>The use of twinned holes.</p> <p>Documentation of primary data, data entry procedures, data verification, data storage (physical and electronic) protocols.</p> <p>Discuss any adjustment to assay data.</p>	<ul style="list-style-type: none"> <li>• No verification outside the Company was completed</li> <li>• The lab and Company randomly insert analytical blanks, standards and duplicates into the sample batches for laboratory QAQC performance monitoring.</li> <li>• The results in this release have not been subject to additional sample verification beyond those mentioned above.</li> </ul>
<b>Location of data points</b>	<p>Accuracy and quality of surveys used to locate drill holes (collar and down-hole surveys), trenches, mine workings and other locations used in Mineral Resource estimation. Specification of the grid system used.</p>	<ul style="list-style-type: none"> <li>• Sample locations were determined by handheld GPS.</li> <li>• The Grid used is GDA94 Zone 54</li> <li>• The location of the samples collected on the tenement is referenced in the body of the report and Appendix 2</li> </ul>

Criteria	JORC Code Explanation	Commentary
	Quality and adequacy of topographic control.	
<b>Data spacing and distribution</b>	Data spacing for reporting of Exploration Results. Whether the data spacing, and distribution is sufficient to establish the degree of geological and grade continuity appropriate for the Mineral Resource and Ore Reserve estimation procedure(s) and classifications applied. Whether sample compositing has been applied.	<ul style="list-style-type: none"> <li>• Samples were collected at random.</li> <li>• No Mineral Resource or Ore Reserve estimations are being reported.</li> </ul>
<b>Orientation of data in relation to geological structure</b>	Whether the orientation of sampling achieves unbiased sampling of possible structures and the extent to which this is known, considering the deposit type. If the relationship between the drilling orientation and the orientation of key mineralised structures is considered to have introduced a sampling bias, this should be assessed and reported if material.	<ul style="list-style-type: none"> <li>• Samples were collected at random from outcrops encountered in the field.</li> </ul>
<b>Sample security</b>	The measures taken to ensure sample security.	<ul style="list-style-type: none"> <li>• All samples were collected and accounted for by AM5 employees or contractors. All samples were bagged into calico and polyweave bags and closed with cable ties. Samples were transported to the lab using courier companies.</li> <li>• The appropriate manifest of sample numbers and a sample submission form containing laboratory instructions were submitted to the laboratory. Any discrepancies between sample submissions and samples received were routinely followed up and accounted for.</li> </ul>
<b>Audits or reviews</b>	The results of any audits or reviews of sampling techniques and data.	<ul style="list-style-type: none"> <li>• No audits have been conducted on the data.</li> </ul>

## Section 2 Reporting of Exploration Results

(Criteria listed in the preceding section also apply to this section.)

Criteria	JORC Code Explanation	Commentary
<b>Mineral tenement and land tenure status</b>	Type, reference name/number, location and ownership including agreements or material issues with third parties such as joint ventures, partnerships, overriding royalties, native title interests, historical sites, wilderness or national park and environmental settings. The security of the tenure held at the time of reporting along with any known impediments to obtaining a licence to operate in the area.	<ul style="list-style-type: none"> <li>The Cromwell prospect is situated within EPM 27947, approximately 39 km NE of the city of Mount Isa, held by Capella Metals Pty Ltd., a subsidiary of Antares Metals Limited.</li> <li>There are no material encumbrances such as royalties or other agreements.</li> </ul>
<b>Exploration done by other parties</b>	Acknowledgment and appraisal of exploration by other parties.	<ul style="list-style-type: none"> <li>A review of historical exploration activities has been conducted, and only minor rock, sediment and rich and spur sampling has been completed in the area.</li> </ul>
<b>Geology</b>	Deposit type, geological setting and style of mineralisation.	<ul style="list-style-type: none"> <li>The giant Mount Isa copper deposits are considered to be a variant of the globally significant group of sediment-hosted copper deposits. Besides large tonnages of copper, this group is also an important source of Co and Ag. Mount Isa Cu-Co breccia-hosted massive sulphide bodies are hosted by the Urquhart Shale of the Mount Isa Group. The Mount Isa Group and equivalent rock types, particularly dolomitic units, were reactive to Cu-bearing fluids and are highly prospective host rocks. Reduction of oxidised ore fluids is thought to be the key depositional mechanism and therefore, many other rock types in the Mount Isa region are potentially host rocks as well including Fe<sup>2+</sup> rocks such as metabasalt and interflow sedimentary units (Wilde et al., 2006).</li> </ul>
<b>Drill hole Information</b>	<p>A summary of all information material to the understanding of the exploration results including a tabulation of the following information for all Material drill holes:</p> <ul style="list-style-type: none"> <li>easting and northing of the drill hole collar</li> <li>elevation or RL (Reduced Level – elevation above sea level in metres) of the drill hole collar</li> <li>dip and azimuth of the hole</li> <li>down hole length and interception depth</li> <li>hole length.</li> </ul> <p>If the exclusion of this information is justified on the basis that the information is not Material and this exclusion does not detract from the understanding of the report, the Competent Person should clearly explain why this is the case.</p>	<ul style="list-style-type: none"> <li>No Drill information is presented in this announcement.</li> </ul>

Criteria	JORC Code Explanation	Commentary
<b>Data aggregation methods</b>	In reporting Exploration Results, weighting averaging techniques, maximum and/or minimum grade truncations (e.g., cutting of high grades) and cut-off grades are usually Material and should be stated. Where aggregate intercepts incorporate short lengths of high-grade results and longer lengths of low-grade results, the procedure used for such aggregation should be stated and some typical examples of such aggregations should be shown in detail. The assumptions used for any reporting of metal equivalent values should be clearly stated.	<ul style="list-style-type: none"> <li>No grade aggregation, weighting, or cut-off methods were used for this announcement</li> </ul>
<b>Relationship between mineralisation widths and intercept lengths</b>	These relationships are particularly important in the reporting of Exploration Results. If the geometry of the mineralisation with respect to the drill hole angle is known, its nature should be reported. If it is not known and only the down hole lengths are reported, there should be a clear statement to this effect (e.g., 'down hole length, true width not known').	<ul style="list-style-type: none"> <li>The mineralised units are near vertical, but no intercepts are reported in this announcement.</li> </ul>
<b>Diagrams</b>	Appropriate maps and sections (with scales) and tabulations of intercepts should be included for any significant discovery being reported. These should include, but not be limited to a plan view of drill hole collar locations and appropriate sectional views.	<ul style="list-style-type: none"> <li>Images/maps are included in the body of the announcement.</li> </ul>
<b>Balanced reporting</b>	Where comprehensive reporting of all Exploration Results is not practicable, representative reporting of both low and high grades and/or widths should be practiced to avoid misleading reporting of Exploration Results.	<ul style="list-style-type: none"> <li>Results from all samples collected during this program have been sent to the laboratory and are reported in the announcement.</li> </ul>
<b>Other substantive exploration data</b>	Other exploration data, if meaningful and material, should be reported including (but not limited to): geological observations; geophysical survey results; geochemical survey results; bulk samples – size and method of treatment; metallurgical test results; bulk density, groundwater, geotechnical and rock characteristics; potential deleterious or contaminating substances.	<ul style="list-style-type: none"> <li>There is no other substantive exploration data to report.</li> </ul>
<b>Further work</b>	The nature and scale of planned further work (e.g., tests for lateral extensions or depth extensions or large-scale step-out drilling). Diagrams clearly highlighting the areas of possible extensions, including the main geological interpretations and future drilling areas, provided this information is not commercially sensitive.	<ul style="list-style-type: none"> <li>Plans for further work are outlined in the body of the announcement.</li> </ul>

## Appendix 2 – Table of sample results

Sample ID	Easting	Northing	Cu_ppm	Au_ppb	Ag_ppm	Bi_ppm	Mo_ppm
ASR0097	348936	7766555	219	130.00	0.18	11.40	0.84
ASR0098	345639	7770978	27500	100.00	0.95	112.00	1.02
ASR0099	345708	7770914	53.8	10.00	0.12	0.47	0.99
ASR0100	346137	7770836	141	10.00	0.13	1.19	0.82
ASR0101	346240	7770841	323	80.00	0.28	2.66	1.52
ASR0102	346241	7770848	1100	40.00	0.17	1.16	7.16
ASR0103	346298	7770857	466	50.00	0.07	0.38	1.21
ASR0104	346385	7770851	125	10.00	0.06	0.28	0.68
ASR0105	346438	7770879	1390	10.00	0.13	2.45	4.55
ASR0106	346487	7770891	216	10.00	0.06	0.09	0.97
ASR0107	346591	7770856	605	20.00	0.03	0.71	1.98
ASR0108	346503	7770820	250	10.00	0.05	0.90	1.36
ASR0109	346428	7770785	83.9	10.00	0.16	2.53	1.88
ASR0110	346060	7770088	56.2	10.00	0.09	0.05	0.66
ASR0111	346711	7770018	32100	70.00	4.07	0.80	3.70
ASR0112	346729	7769968	12750	180.00	0.77	3.06	3.57
ASR0113	346697	7770048	25400	70.00	1.34	0.12	2.17
ASR0114	346679	7770108	225000	190.00	0.68	0.37	1.60
ASR0115	346539	7770269	168	10.00	0.10	1.32	1.03
ASR0116	346524	7770224	563	10.00	0.03	0.05	1.20
ASR0117	346574	7770202	2020	10.00	0.02	0.02	1.18
ASR0118	347537	7770130	235	10.00	0.04	0.05	1.12
ASR0119	347511	7770065	12000	60.00	0.24	0.29	2.46
ASR0120	346725	7769923	4800	240.00	0.35	1.92	4.29
ASR0121	347508	7769909	3600	30.00	0.09	0.08	2.64
ASR0122	347512	7769872	7520	60.00	0.10	1.51	12.60
ASR0123	347514	7769852	1670	20.00	0.15	0.23	6.20
ASR0124	347502	7769857	2080	10.00	0.08	0.20	1.52
ASR0125	347514	7769841	3720	30.00	0.45	1.37	4.67
ASR0126	347513	7769834	17050	30.00	0.74	1.30	1.62
ASR0127	347509	7769806	14800	20.00	0.55	0.12	1.99
ASR0128	347500	7769784	3930	30.00	0.28	0.29	2.67
ASR0129	347510	7769769	149	10.00	0.02	0.01	1.06
ASR0130	347505	7769740	59	10.00	0.01	0.01	1.30
ASR0131	347506	7769737	3970	30.00	0.88	0.49	0.85
ASR0132	347503	7769942	17900	50.00	0.04	0.33	2.85
ASR0133	347499	7769960	11900	20.00	0.10	1.32	4.86
ASR0134	347503	7769980	26400	30.00	0.80	0.16	1.51
ASR0135	347503	7769999	25200	150.00	0.42	0.38	2.23
ASR0136	345670	7771062	13250	120.00	0.23	1.24	2.49
ASR0137	345656	7771027	41600	100.00	0.80	3.53	0.83
ASR0138	345655	7771003	3400	130.00	0.59	58.30	0.77
ASR0139	347521	7770077	1650	10.00	0.17	0.12	1.38
ASR0140	347515	7770102	6940	60.00	0.09	0.35	1.20
ASR0141	347519	7770046	48300	40.00	2.02	0.34	5.47
ASR0142	347507	7770045	6940	30.00	0.06	0.17	2.09
ASR0143	346578	7770893	163	10.00	0.06	0.68	0.89
ASR0151	345752	7770144	99.6	20.00	0.07	2.75	1.32
ASR0152	347635	7768799	565	10.00	0.50	2.00	1.00
ASR0153	347650	7768947	14850	30.00	1.90	14.00	1.00
ASR0154	347654	7769040	7320	10.00	1.60	10.00	28.00
ASR0155	347656	7769088	2730	30.00	0.70	3.00	3.00
ASR0156	347579	7769401	23100	30.00	1.00	26.00	7.00
ASR0157	347729	7768460	15650	70.00	0.50	19.00	2.00
ASR0158	348324	7767203	429	10.00	0.50	2.00	1.00
ASR0159	348326	7767140	337	10.00	0.50	2.00	1.00

For personal use only

Sample ID	Easting	Northing	Cu_ppm	Au_ppb	Ag_ppm	Bi_ppm	Mo_ppm
ASR0160	348309	7766930	5420	10.00	0.50	7.00	1.00
ASR0161	348299	7766900	12500	20.00	0.60	17.00	3.00
ASR0162	350021	7765384	35	10.00	0.50	2.00	1.00
ASR0163	348531	7765517	34300	120.00	9.10	43.00	1.00
ASR0164	348526	7765510	12400	60.00	7.10	20.00	1.00
ASR0165	348516	7765466	8570	50.00	0.50	11.00	3.00
ASR0166	348244	7765415	4650	20.00	0.50	2.00	3.00
ASR0199	348518	7765095	3110	10.00	0.90	9.00	1.00
ASR0200	348509	7765112	2990	20.00	1.40	10.00	2.00
ASR0201	348515	7765137	10450	50.00	2.90	13.00	11.00
ASR0202	348515	7765224	12850	20.00	2.50	22.00	8.00
ASR0203	348530	7765318	18750	50.00	0.50	22.00	5.00
ASR0204	348533	7765350	5310	30.00	0.60	8.00	5.00
ASR0205	348530	7765391	43400	100.00	44.00	104.00	7.00
ASR0206	348560	7764993	7560	40.00	0.50	11.00	1.00
ASR0207	348546	7764992	11550	20.00	0.50	12.00	1.00
ASR0208	348486	7764033	6770	20.00	1.20	12.00	3.00
ASR0209	348484	7764045	57900	50.00	2.10	66.00	3.00
ASR0210	348488	7764160	4180	10.00	0.70	6.00	1.00
ASR0211	348483	7764227	4980	10.00	0.50	6.00	1.00
ASR0212	348477	7764233	5330	20.00	2.50	4.00	1.00
ASR0213	348475	7764249	6520	30.00	1.70	8.00	2.00
ASR0214	348476	7764290	110500	50.00	0.80	2.00	4.00
ASR0215	348518	7764288	4330	10.00	1.10	4.00	1.00
ASR0216	348492	7764296	33300	20.00	1.60	40.00	2.00