



"Venus Metals Corporation holds a significant and wide-ranging portfolio of Australian gold, copper, base metals, lithium, titanium, vanadium exploration projects in Western Australia, in addition to owning a 1% Royalty over the Youanmi Gold Mine and being a substantial shareholder of Rox Resources Limited."

VENUS METALS CORPORATION LIMITED

Unit 2/8 Alvan St
Subiaco, WA 6008
+61 8 9321 7541
info@venusmetals.com.au
www.venusmetals.com.au
ABN: 99 123 250 582

DIRECTORS

Peter Charles Hawkins
Non-Executive Chairman

Matthew Vernon Hogan
Managing Director

Kumar Arunachalam
Executive Director

Simon Coxhell
Non-Executive Director

COMPANY SECRETARY

Patrick Tan

9 October 2025



Youanmi Base Metals Project Exploration Update Zinc Metallurgical Testwork Commences

Venus Metals Corporation Limited ("Venus" or the "Company") is pleased to announce the results of two diamond drillholes (VMC250, VMC252) targeting shallow Zinc mineralisation for metallurgical study and a diamond hole (VMC255) drilled under DMPE EIS co-funded drilling grant (refer ASX releases 5 May 2025 and 23 June 2025).

The diamond holes (VMC250 & VMC252) intercepted significant zinc and indium mineralisation.

VMC250: 19m @ 2.63% Zn and 19.32 g/t In from 49m,
including 3m @ 4.71% Zn from 49 m

VMC252: 11m @ 3.00% Zn and 19.21 g/t In from 65m,
including 3m @ 5.20% Zn from 70m.

Metallurgical testwork has commenced at ALS Metallurgy using the mineralised sections of these core samples. The program will start with sighter studies, including conventional crushing, grinding and flotation, to assess flotation amenability. Initial rougher flotation will target optimum conditions for maximum zinc recovery, with subsequent cleaner flotation focused on delivering high-grade zinc concentrate with low penalty elements and potential indium credits.

The DMPE EIS co-funded diamond hole VMC255 (E57/986) was drilled to a depth of 410.7m. The vertical hole intersected zinc mineralisation from 318m

VMC255: 6m @ 2.46% Zn and 9.79 g/t In from 318m
including 1m @ 8.94% Zn from 322m

and is interpreted as being a down dip, northern extension of the Pincher Dome VMS Trend.

The Company is currently assessing the opportunity to define a large shallow open pittable zinc resource within the Pincher area. The metallurgical program will be an important factor in this work and will provide key information leading to the next phase of work at Pinchers.



Youanmi Base Metals Project:

The Youanmi Base Metals Project is located about 15 km southwest of the Youanmi Gold Project being developed by Rox Resources and 12 km south of the Venus Titanium-Vanadium-Iron deposit, a JORC 2012 compliant Measured, Indicated and Inferred Mineral Resource estimate of 135 Million Tonnes @ 0.34% V₂O₅, 6.27% Titanium (TiO₂) and 21.33% Fe. (refer VMC, ASX announcement dated 20 March 2019) (Figure 1).

The tenements E57/986 (90% owned by Venus-all metals except gold) & E57/1019 (100% owned by Venus's subsidiary Redscope Enterprises Pty Ltd- all metals except gold) are host to the Pincher Dome Zinc Project. The Pincher Dome VMS Trend covers more than 5 kilometres of strike and hosts a number of known zinc and copper prospects.

Two diamond tails (VMC250 & VMC252) in E57/1019 were drilled adjacent to previously reported significant intersections of zinc mineralisation in Venus RC holes VPW40 and VPW62 (refer ASX release 27 April 2017) to final depths of 77.5m and 89.8m. Metallurgical testwork commences at ALS Metallurgy using the mineralised sections of these core samples for delivering high-grade zinc concentrate with low penalty elements.

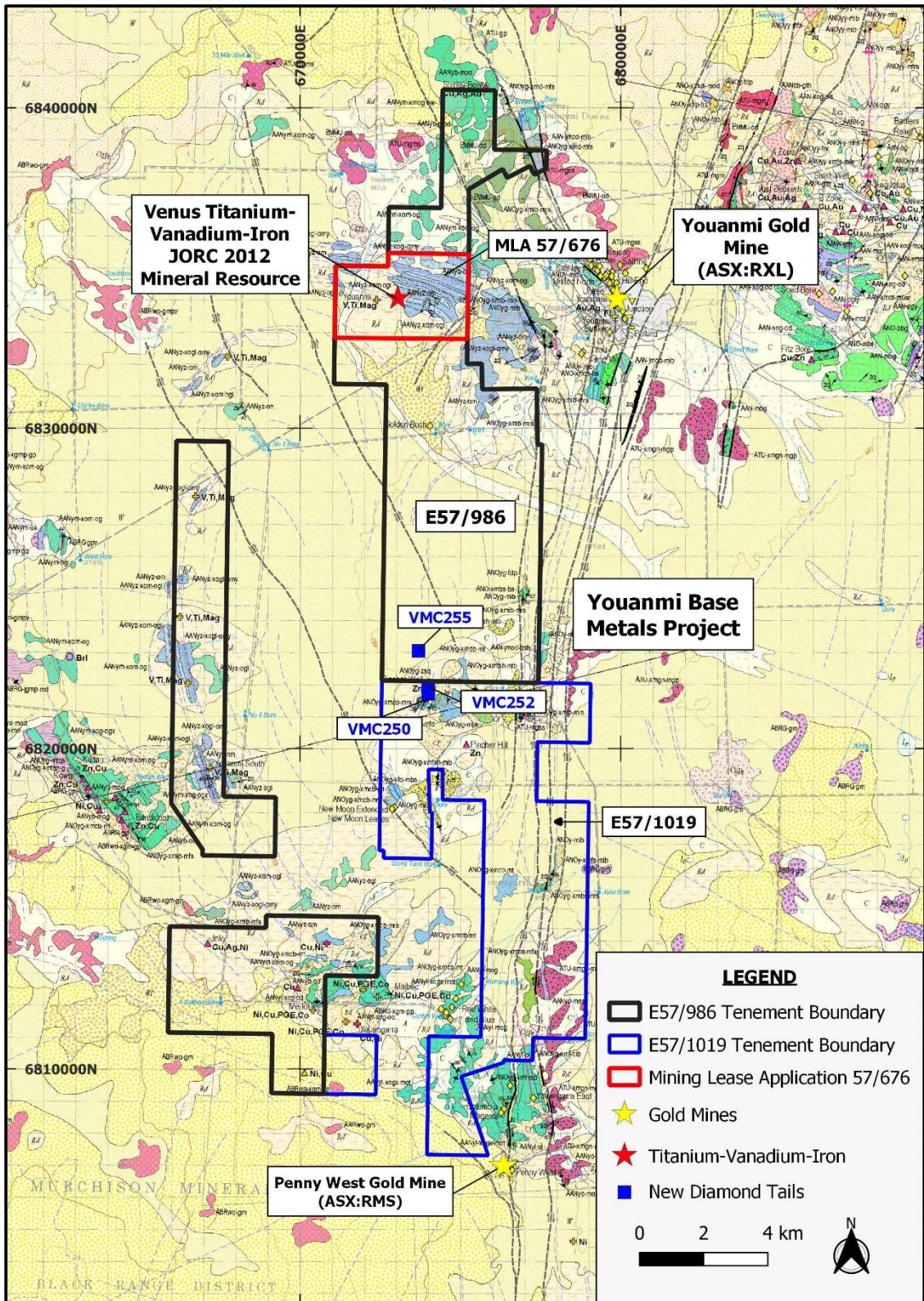
VMC255 (E57/986) was drilled under the Government Co-funded EIS Grant to a final depth of 410.7m (356.2m of core) to test a plate conductor at 400m depth (refer ASX release 31 January 2024 and 5 May 2025). The vertical hole intersected zinc mineralisation at depth.

Table 1. Details of Diamond Tail Holes

Hole_ID	Easting (GDA94 Z50)	Northing (GDA94 Z50)	Pre-collar Depth(m)	Final Depth (m)	Azi (°)	Dip (°)
VMC250	674000	6821707	41.4	77.5	270	-60
VMC252	674000	6821894	51.4	89.8	270	-60
VMC255	673701	6823050	54.5	410.7	0	-90



For personal use only



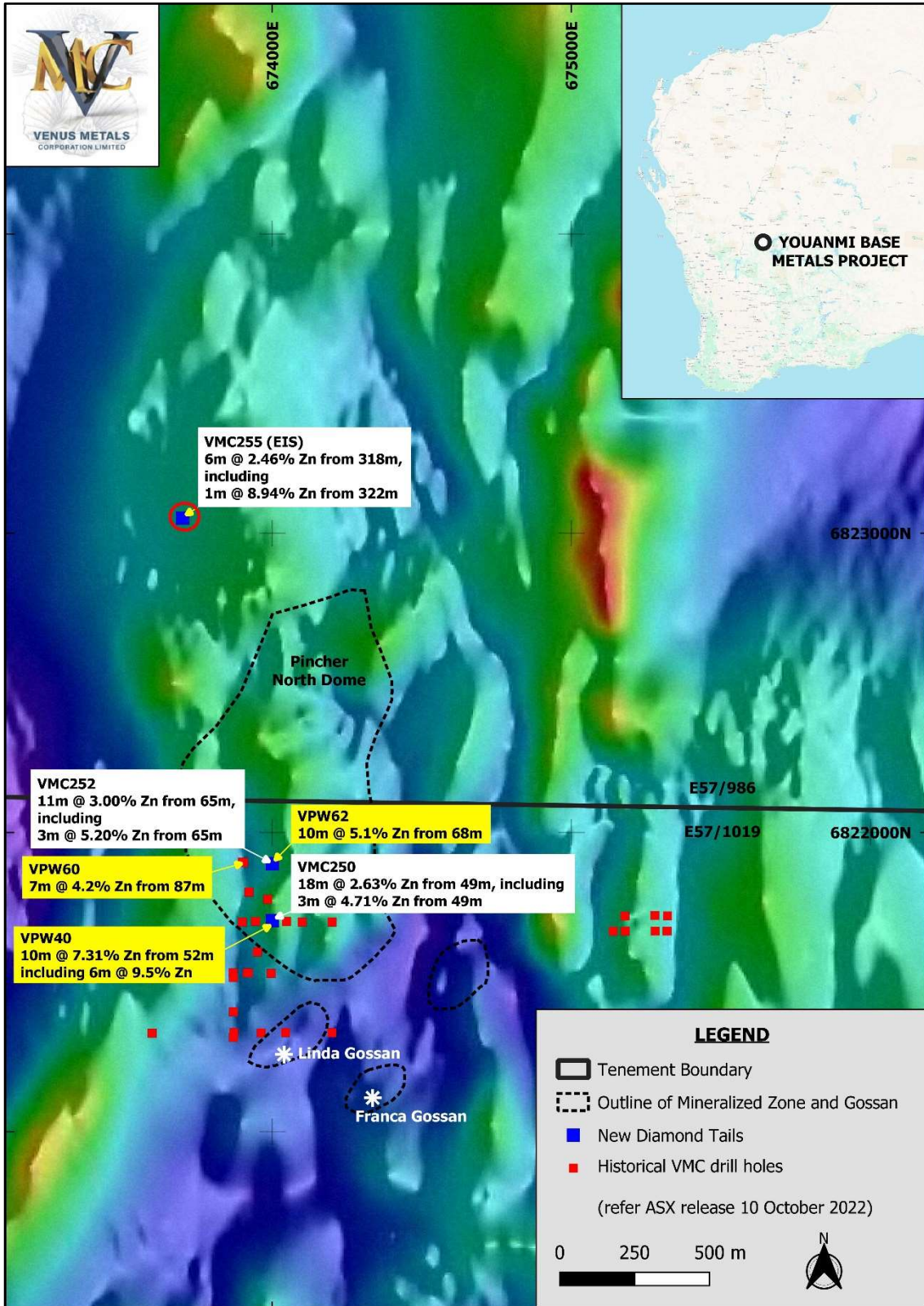


Figure 2. Pincher North Base Metals Project location of drillhole collars over aeromagnetic image (TMI-RTP).

For personal use only

Table 2. Assays of Core samples Zinc>2000 ppm

Hole_ID	From_m	To_m	Zn	Ag	In	S
VMC250	48	49	2220	0.84	0.69	8576
	49	50	21716	1.46	5.08	49264
	50	51	46540	2.32	9.68	78032
	51	52	73188	3.05	30.46	95727
	52	53	5494	2.16	2.15	47961
	53	54	5152	3.19	2.2	87693
	54	55	15403	3.32	10.14	72821
	55	56	2873	5.42	2.04	85414
	56	57	70299	8.18	36.49	100937
	57	58	26745	6.9	17.71	118307
	58	59	39954	4.71	46.98	98752
	59	60	27601	4.48	28.17	97247
	60	61	23214	3.03	18.36	57840
	61	62	2787	2.75	2.31	61314
	62	63	20967	2.27	18.44	49481
	63	64	7249	4.06	6.98	54366
	64	65	63986	38.38	90.03	131334
	65	66	25889	6.96	28.07	164987
	66	67	2466	1.19	1.78	26358
	67	68	17650	2.51	10.13	56103
	73	74	7196	14.66	6.79	110708
	74	75	3558	10.33	2.69	74775
	75	76	2969	7.46	1	43184

VMC252	62	63	2359	0.5	0.56	944
	64	65	2391	0.67	1.05	12137
	65	66	12835	6.59	8.09	56971
	66	67	30490	3.85	30.62	70650
	67	68	32844	1.78	38.44	33197
	68	69	43116	3.55	29.44	59902
	69	70	20860	4.18	15.71	44183
	70	71	58422	3.85	17.08	54822
	71	72	52537	3.21	21.73	57427
	72	73	45154	4.37	28.15	55908
	73	74	6040	1.92	3.85	17044
	74	75	9603	3.68	7.11	27791
	75	76	18399	2.33	11.09	40058
	76	77	4788	2.69	3.75	27465
	78	79	7495	1.31	6.26	20518
	79	80	4446	0.68	4.15	11182
	81	82	18827	2.64	24.63	75014
	82	83	3857	0.88	4.75	8630
	83	84	4317	2.45	4.34	26271
	88	89	3943	1.96	3.35	39732

For personal use only

Hole_ID	From_m	To_m	Zn	Ag	In	S
VMC255	318	319	9770	0.61	0.52	17872
	319	320	2697	0.08	0.36	4194
	320	321	2502	0.44	0.44	11621
	321	322	38985	0.92	4.65	34400
	322	323	88446	3.54	50.23	71269
	323	324	5461	2.28	2.54	36942
	324	325	3766	4.26	0.99	34717
	325	326	2524	1.16	1.75	18084

For personal use only



This announcement is authorised by the Board of Venus Metals Corporation Limited.

For further information please contact:

Venus Metals Corporation Limited

Matthew Hogan

Managing Director

Ph +61 8 9321 7541

info@venusmetals.com.au

Competent Person's Statement

The information in this report that relates to Exploration Results of Youanmi Base Metals Project is based on, and fairly represents, information and supporting documentation compiled by Mr. Simon Coxhell (CoxsRocks Pty Ltd), Non-Executive Director of Venus Metals Corporation Ltd, and a Member of the Australian Institute of Mining and Metallurgy. Mr. Coxhell has sufficient experience that is relevant to the style of mineralisation and type of deposit under consideration and to the activity that he is undertaking to qualify as a Competent Person as defined in the 2012 Edition of the Joint Ore Reserves Committee (JORC) Australasian Code for Reporting of Exploration Results, Mineral Resources and Ore Reserves. Mr Coxhell consents to the inclusion in the report of the matters based on his information in the form and context in which it appears.

Forward-Looking Statements

This document may include forward-looking statements. Forward-looking statements include, but are not limited to, statements concerning Venus Metals Corporation Limited planned exploration program and other statements that are not historical facts. When used in this document, the words such as "could," "plan," "estimate," "expect," "intend," "may", "potential," "should," and similar expressions are forward-looking statements. Although Venus Metals Corporation Ltd believes that its expectations reflected in these forward-looking statements are reasonable, such statements involve risks and uncertainties and no assurance can be given that actual results will be consistent with these forward-looking statements.

JORC Code, 2012 Edition – Table 1

Section 1 Sampling Techniques and Data

Criteria	Commentary
<i>Sampling techniques</i>	<ul style="list-style-type: none"> • Venus drilled 3 Diamond tail holes for a total of 430.7m of core. • VMC250 and VMC252 core were orientated for structural and geotechnical logging where possible. The orientated HQ core was first cut into half core, then one half was further cut into quarter core. • VMC255 was drilled with a vertical dip (90°) and therefore no orientation data could be obtained. The core was cut in half, with one set of half core provided to the DEMIRS for storage under the EIS grant. • Individual one-metre samples of quarter core were bagged, labelled and submitted to Jinning Laboratory in Perth for multielement analysis by Mixed Acid Digest followed by ICP-MS and ICP-OES (Jinning method MADIM60). • Selective 40 half core samples (from 317m-410.7m) in VMC255 were bagged, labelled and submitted to Jinning as above, including determination of gold, platinum and palladium via Lead Collection Fire Assay with ICP-OES. • Sampling was done by VMC geologist.
<i>Drilling techniques</i>	<ul style="list-style-type: none"> • Drilling was completed by Terra Drilling using track-mounted multi-purpose drill rig for HQ core. • Core was orientated using an Axis Champ true North-seeking Gyro and Core Orientation Tool. • Downhole surveys were done for all Diamond tail holes (including RC pre-collar) using the ChampGyro instrument, usually at 30m intervals. • All holes were drilled at a nominal angle of -60° or -90° and set up using a compass.
<i>Drill sample recovery</i>	<ul style="list-style-type: none"> • All core recoveries are measured and recorded by the drilling crew for every run and validated by Venus staff. • The recovery was generally good for all drill holes.
<i>Logging</i>	<ul style="list-style-type: none"> • For all holes, small sub-samples were washed and stored in chip trays for reference. • A qualified geologist digitally logged lithology, mineralisation, structures and RQD for all Diamond core. • Photographs were taken of Diamond core trays
<i>Sub-sampling techniques and sample preparation</i>	<ul style="list-style-type: none"> • 2-3kg samples were submitted to Jinning Laboratories (Perth) for 60 element analyses using mixed acid digest with ICP/MS and ICP/OES finishes as well as for gold, platinum and palladium using lead collection fire assay followed by ICP-OES. • Sample preparation at Jinning Laboratories, Perth, comprised crushing and milling of the total sample to a nominal minus 75 µm. • The above sample sizes and analytical techniques are considered adequate for gold and base metals analysis.
<i>Quality of assay data and laboratory tests</i>	<ul style="list-style-type: none"> • Quality procedures for the analyses of drill samples include the insertion of standards, controls and blanks.

Criteria	Commentary
<i>Verification of sampling and assaying</i>	<ul style="list-style-type: none"> No independent verification of sampling and assaying has been carried out.
<i>Location of data points</i>	<ul style="list-style-type: none"> A handheld REACH RS2+ with Multi-band RTK GNSS receiver with centimetre precision was used to locate the RC collar positions with an accuracy of +/-5cm. The use of the REACH RS2+ instrument was made possible in the field by the availability of Starlink satellite internet access. Grid systems used for the Youanmi Project are geodetic datum: GDA 94, Projection: MGA, Zone 50.
<i>Data spacing and distribution</i>	<ul style="list-style-type: none"> On tenement E57/986 the Diamond tail hole was drilled to test a 5000 Siemen plate conductor at 400m depth (refer ASX release 31 January 2024). Two inclined Diamond tail holes in tenement E57/1019 were drilled for metallurgical test work. Diamond samples were taken at one-metre interval lengths, except for uneven (<1m) interval lengths at the beginning and end of Diamond core runs.
<i>Orientation of data in relation to geological structure</i>	<ul style="list-style-type: none"> One vertical Diamond tail (VMC 255) was drilled to test a conductor at depth. Two inclined Diamond tails (VMC250, VMC252) were drilled adjacent to previous collars (VPW40, VPW62 respectively) to intersect the known mineralised envelope.
<i>Sample security</i>	<ul style="list-style-type: none"> All samples were transported directly to the core cutting facilities at Perth by a contractor and staff. Selected samples were collected and submitted to the lab by Venus staff. Half cores from VMC 255 were submitted to DMPE core library
<i>Audits or reviews</i>	<ul style="list-style-type: none"> No audits or reviews have been carried out on sampling techniques and data.

Section 2 Reporting of Exploration Results

Criteria	Commentary
<i>Mineral tenement and land tenure status</i>	<p>Tenement E57/986 owned 90% by Venus and 10% by prospector for all commodities except gold. Tenement E57/1019 is 100% held by Redscope Enterprises Pty Ltd (fully owned subsidiary of Venus Metals Corporation Ltd) for all commodities except gold.</p> <p>To the best of Venus' knowledge, there are no known impediments to operate on the above listed ELs.</p>
<i>Exploration done by other parties</i>	<ul style="list-style-type: none"> At the Youanmi project, extensive historical exploration drilling data (Diamond, RC, PER, RAB), and geophysical data by previous companies were utilized.
<i>Geology</i>	<ul style="list-style-type: none"> The Youanmi Project covers part of the Youanmi Greenstone Belt and comprises VHMS-style base metals mineralization within a felsic to intermediate volcano-sedimentary sequence associated with BIF and chert layers.
<i>Drill hole Information</i>	<ul style="list-style-type: none"> All collar positions are shown in Figure 2 in the announcement and drill hole collar data is summarized in Table 1.

Criteria	Commentary
<i>Data aggregation methods</i>	No data aggregation applied.
<i>Relationship between mineralisation widths and intercept lengths</i>	<ul style="list-style-type: none"> All reported mineralization intercepts represent downhole lengths, and true thickness and width of mineralization is yet to be determined.
<i>Diagrams</i>	<ul style="list-style-type: none"> See figures attached to this release.
<i>Balanced reporting</i>	<ul style="list-style-type: none"> Assays for Diamond core drill samples with > 2000ppm Zn are presented in Table 2. Lab results show no anomalous values of other elements analysed and hence not included in this report.
<i>Other substantive exploration data</i>	Historical exploration drilling data and reports by Venus and previous companies are available for this area.
<i>Further work</i>	Delineation of the potential target area for future exploration drilling, completion of metallurgical test work for Zn beneficiation and resource modelling