

Priority Targets Confirmed for Upcoming Central Yilgarn Exploration Program

Highlights

- Catalina advancing a systematic, district-scale exploration strategy across the Central Yilgarn Project
- Independent Data Review Pinpoints Priority Targets
- ~10,000m air-core and RC programs will follow up untested zones and open mineralisation at Viper, Leghorn, T1B, Chicken Little, and Snowflake
- Systematic sampling will commence across Viper SE, T1E, T8, and Auger 2 to refine near-surface geochemical anomalies ahead of drilling
- Catalina will launch an integrated campaign combining soil sampling, air-core, and reverse-circulation (RC) drilling following heritage clearances
- Strong Historical Results Provide Compelling Follow-Up Targets (Previously Reported¹):
 - 15m @ 1.5 g/t Au from 12m (incl. 3 m @ 6.7 g/t Au) – Viper
 - 48m @ 0.6 g/t Au from 27m (incl. 21 m @ 1.3 g/t Au) – Leghorn
 - 17m @ 4.1 g/t Au and 28 g/t Ag from 53m (inc 4m @ 14.9 g/t Au and 72.2 g/t Ag) – Chicken Little
 - 16 m @ 1.9 g/t Au from surface (incl. 4 m @ 8.5 g/t Au) – Snowflake
 - 9m @ 2.6 g/t Au from 23m (incl. 3 m @ 7.1 g/t Au) – Megatron
 - 17m @ 0.7 g/t Au from 22m (incl. 8 m @ 1.2 g/t Au) – T1B Corridor
 - 10m @ 0.8 g/t Au from 0m (incl. 1 m @ 6.0 g/t Au) – T1B Corridor

Catalina Resources Ltd (“**Catalina**” or “**the Company**”) is pleased to announce that, following an independent technical assessment by Apex Geoscience Ltd, a number of priority gold targets have been confirmed within the Central Yilgarn Project, Western Australia.

The assessment provided independent recommendations to guide Catalina's upcoming exploration activities across the Yerilgee and Evanston greenstone belts, where previous drilling returned multiple gold intersections that remain open along strike and at depth.

An integrated soil-sampling, air-core, and reverse-circulation (RC) drilling program will now be advanced following the completion of heritage clearances.

Project Overview

In December 2024, Catalina completed the acquisition of the Yerilgee and Evanston Greenstone Belts from Dreadnought Resources Limited (ASX: DRE).¹ This transaction consolidated more than 650 square kilometres of contiguous tenure in the Central Yilgarn region, approximately 190 kilometres northwest of Kalgoorlie. The project area contains multiple under-explored mineralised corridors prospective for gold, nickel, lithium, and rare-earth elements.

Catalina's tenure lies within a highly active exploration district (Figure 1.). Leeuwin Metals Ltd (ASX: LM1) recently announced significant gold and copper intersections immediately adjacent to Catalina's Evanston area (refer ASX announcement "*Shallow High-Grade Gold from First Drilling at Evanston*", 6 October 2025²). While Catalina has not independently verified these results, their proximity highlights the emerging potential of the broader Central Yilgarn greenstone belt.

Previous work undertaken by Dreadnought identified multiple gold anomalies which were refined by soil sampling and air-core drilling.¹ Catalina's initial field activities in mid-2025 focused on validating these results and preparing the groundwork for systematic follow-up.

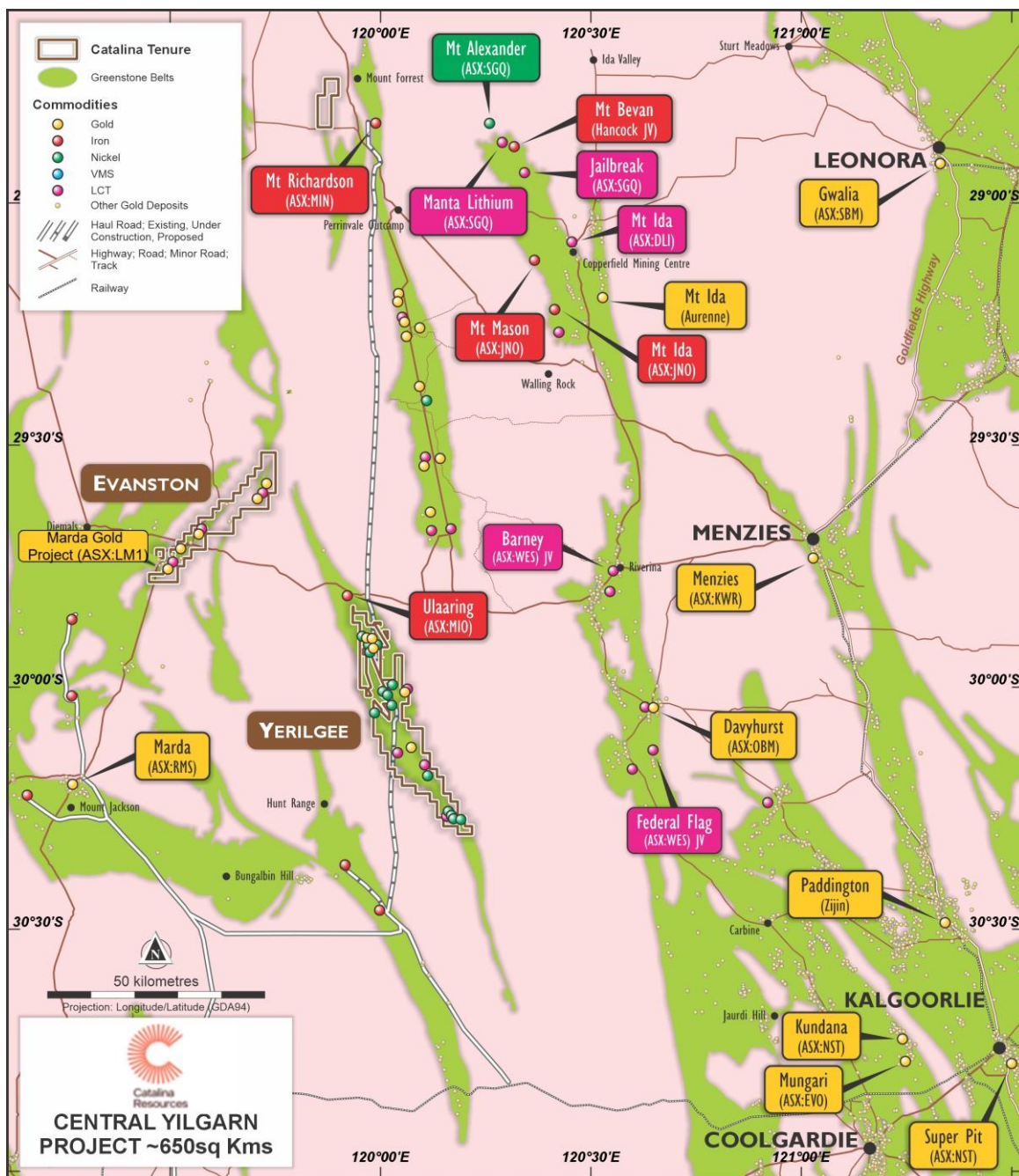


Figure 1. Regional Location of Evanston and Yerilgee Projects

Technical Review and Key Outcomes

In September 2025, Catalina engaged Apex Geoscience Ltd to undertake an independent technical assessment of exploration data, drilling information, and geological models across both greenstone belts. The assessment evaluated data integrity, prioritised gold targets, and provided recommendations to guide efficient and technically sound follow-up exploration.

Apex’s assessment highlighted several prospects where the consistency of mineralisation and structural context indicate potential for extensions. Catalina has incorporated these recommendations into the planning of its next exploration phase.

Evanston Greenstone Belt

Camp	Historical Significant Intercepts
T1 Gold Camp	<ul style="list-style-type: none"> 15m @ 1.5g/t Au (incl. 3m @ 6.7g/t Au) at Viper¹ 4m @ 3.8g/t Au in shallow RAB drilling, not yet followed up
T2 Gold Camp	<ul style="list-style-type: none"> 48m @ 0.6g/t Au (incl. 21m @ 1.3g/t Au) at Leghorn¹ 7m @ 0.79% Cu and 535ppb Au in massive sulphide from the same zone¹

Evanston Belt – Review Findings and Priority Targets

Apex Geoscience Ltd’s independent technical assessment of exploration data across the Evanston Belt (Figure 2) highlighted several prospects recommended for follow-up drilling, including Viper North (Figure 3), Viper SE (Figure 3) and T1B.

These areas exhibit favourable geological continuity and previously reported gold intercepts¹ that remain open along strike and at depth. Catalina plans to undertake additional AC and RC drilling to evaluate extensions of known mineralisation and test untested anomalies defined during the assessment.

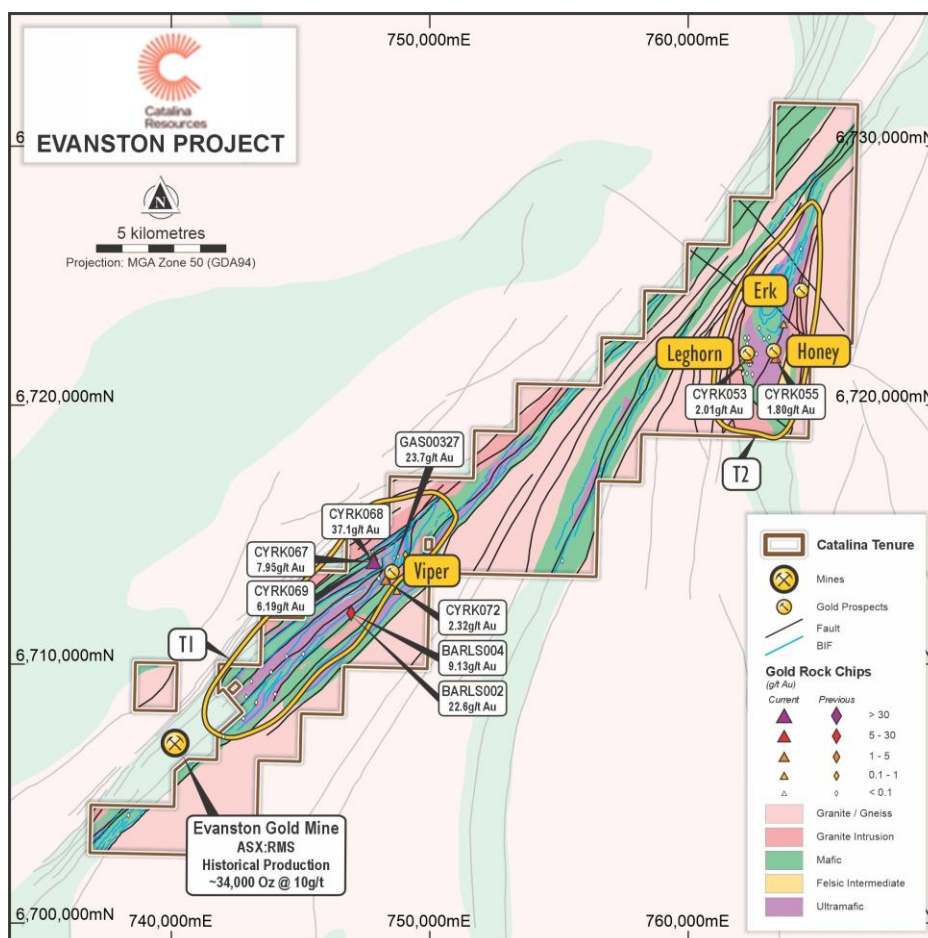


Figure 2. Regional geological interpretation of the Evanston Greenstone Belt.

For personal use only

➤ **T1 (Viper North):** Large contourable soil anomaly in the northern zone remains largely untested. Historical shallow AC drilling has been completed (largely less than 10 to 20m depth), but deeper RC drilling is absent. The shallow AC drilling suggests bedrock is shallow. Deeper Au intercepts in southern drillholes suggest potential for mineralisation at depth in the north.

T1 (Viper South): Shallow AC and deeper RAB drilling have been conducted, with minor Au intercepts in some of the deeper holes. Several holes terminate in anomalous gold (0.7–0.9 g/t Au), indicating potential mineralisation at depth and warranting follow-up drilling.

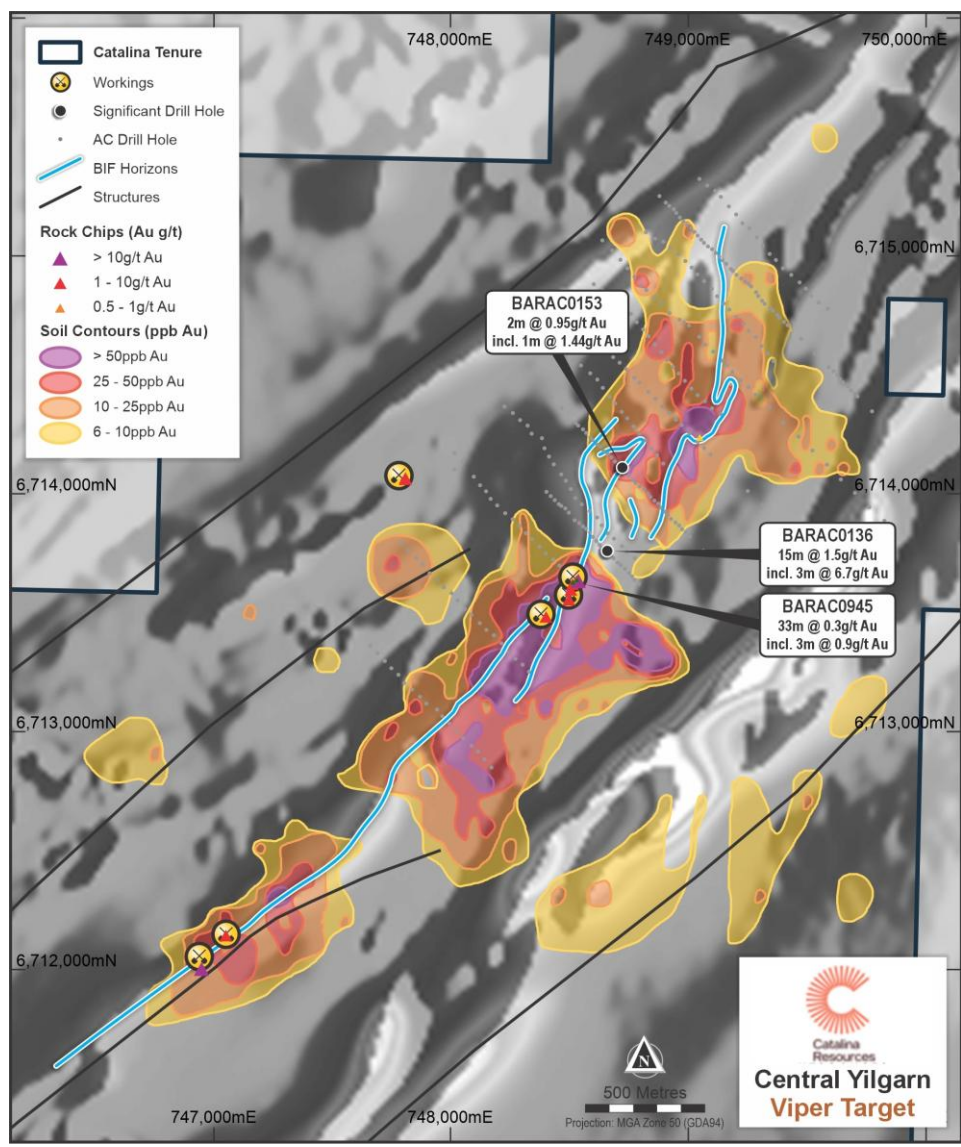


Figure 3. Viper Gold Prospect prospects showing historical drill holes and significant previously reported intersections¹

➤ **T1 (T1B):** Prominent NE–SW trending soil anomaly has been extensively tested by shallow AC drilling, however, only six holes exceed 30 m depth, limiting assessment of vertical continuity and potential mineralisation

For personal use only

- **T1 (T1D):** Surface geochemical anomalies were partially validated by RAB drilling, which intersected gold mineralisation. Mineralisation appears to continue along strike, spatially associated with the lithological contact between granite and greenstone, suggesting structural or stratigraphic control
- **T1 (Evanston South):** Several drillholes have returned anomalous Au intercepts, with mineralisation remaining open along strike and to the west (southern extent).
- **T2 (Leghorn):** Previous RC drilling in Leghorn target area returned multiple >1 g/t Au intercepts, with mineralisation remaining open to the north. Only shallow AC drilling has been completed beyond the RC fence line, limiting assessment of depth and lateral continuity (Figure 4).

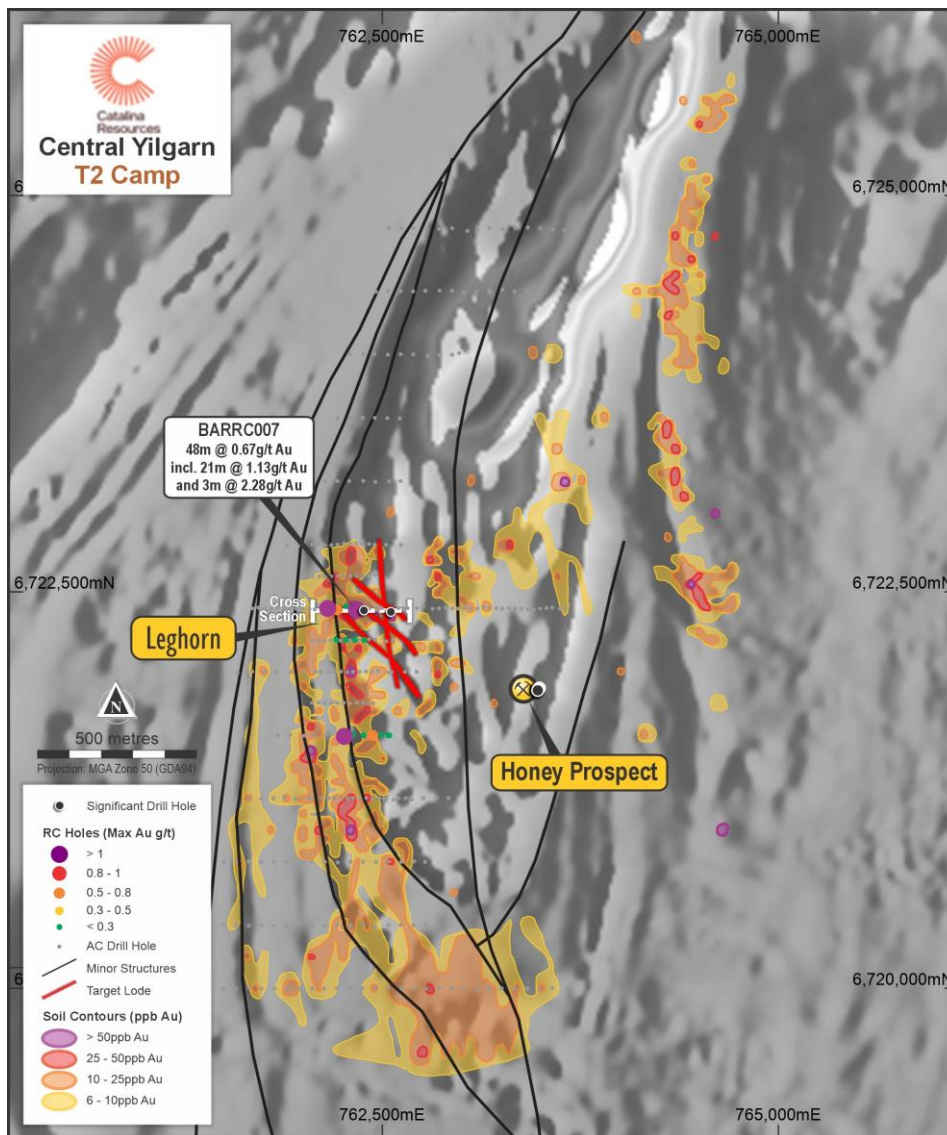


Figure 4. T2 Gold Prospect prospects showing historical drill holes and significant previously reported intersections¹

Yerilgee Greenstone Belt

Camp	Historical Significant Intercepts
T6 Gold Camp	<ul style="list-style-type: none"> 17m @ 4.1g/t Au and 28g/t Ag (incl. 4m @ 14.9g/t Au) at Chicken Little¹ 16m @ 1.9g/t Au from surface (incl. 4m @ 8.5g/t Au) at Snowflake¹ 9m @ 2.6g/t Au (incl. 3m @ 7.1g/t Au) at Megatron¹
T8 Gold Camp	<ul style="list-style-type: none"> 17m @ 0.7g/t Au (incl. 8m @ 1.2g/t Au)¹ 10m @ 0.8g/t Au (incl. 1m @ 6.0g/t Au)¹

Yerilgee Belt – Review Findings and Priority Targets

Apex Geoscience independent technical assessment of exploration data across the Yerilgee Belt (Figure 5) highlighted several prospects recommended for follow-up work, including Chicken Little, Snowflake, and T8.

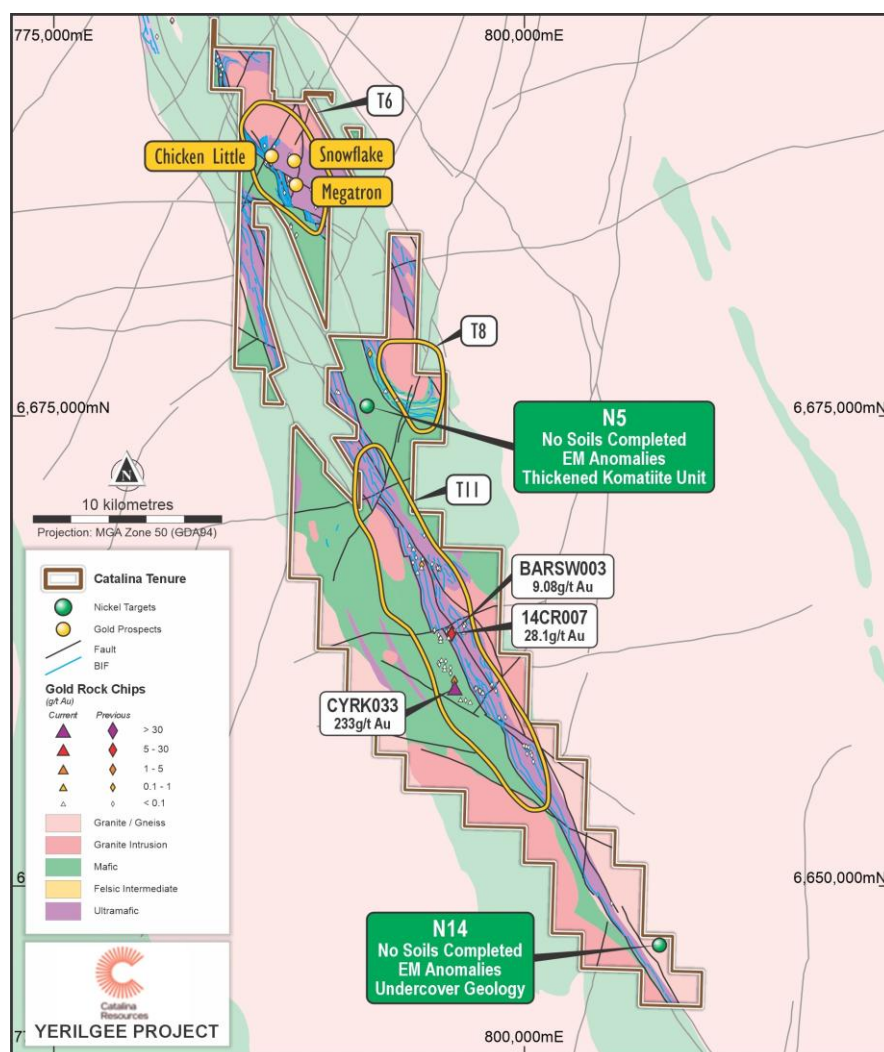


Figure 5. Regional geological interpretation of the Yerilgee Greenstone Belt

At these locations, mineralisation intersected in previous drilling¹ remains open along strike and at depth, warranting additional AC and RC testing as part of Catalina's upcoming exploration campaign (Figure 6).

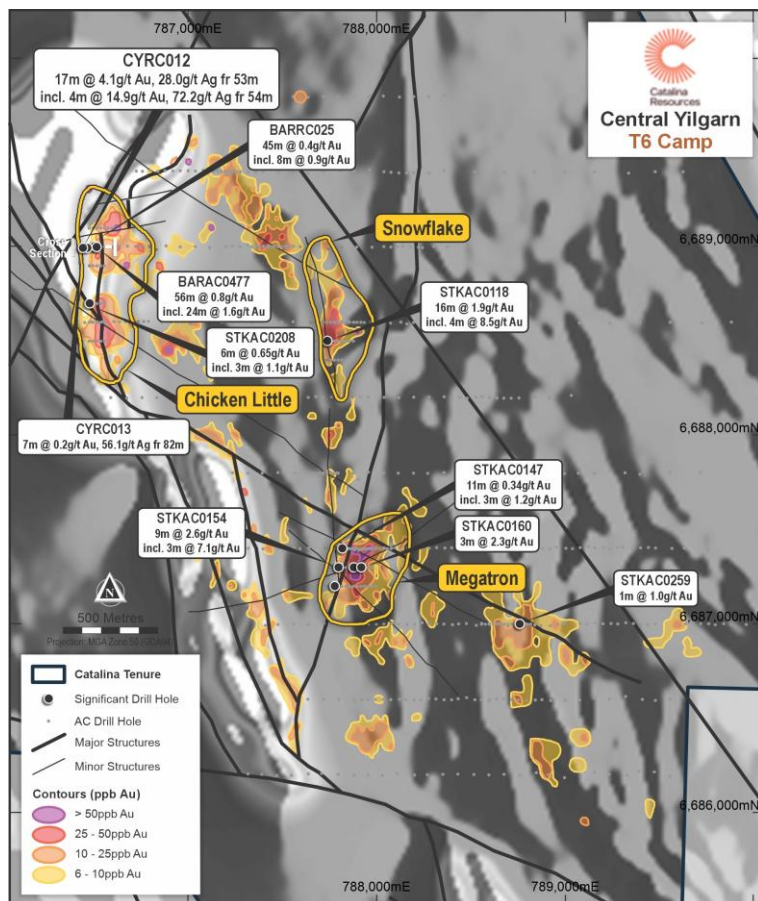


Figure 6. Location of the Snowflake, Chicken Little, and Megatron prospects showing historical drill holes and significant previously reported intersections¹

➤ **T6 (Chicken Little):** Several drillholes have returned anomalous Au intercepts, with mineralisation remaining open along strike and to the west (southern extent) (Figure 7).

➤ **T6 (Snowflake):** Anomalous Au intercept has been recorded in a single drillhole. Saprolite anomalism. Previous shallow AC drilling did not fully test the mineralisation at depth.

For personal use only

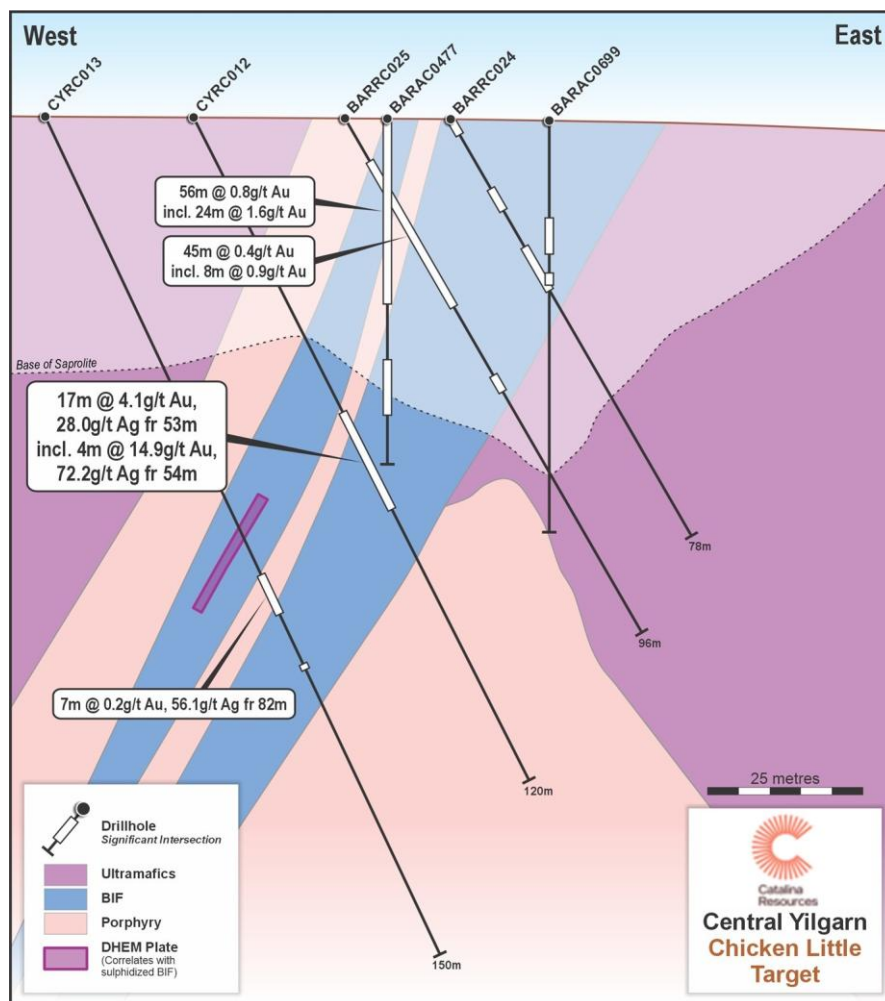


Figure 7. Drilling section for RC hole CYRC012 at Chicken Little North¹

➤ **T8 (T8)** (Figure 8 & 9): Strong gold anomalism has been identified in both soil geochemistry and drilling datasets. Mineralisation indicates that there is some supergene enrichment and a possible shallow easterly dip

➤ **T8 (Auger 1):** Surface geochemical sampling has been limited to the southern portion of the target area, leaving the remainder untested. Gold anomalism is sporadic. Two parallel NW–SW trending magnetic highs are present in the northern area, warranting systematic soil geochemistry to evaluate their potential for mineralisation.

➤ **T8 (Auger 2):** Strong surface Au anomaly remains untested, with the geochemical footprint extending approximately 1.3 km x 500m. The target area is structurally complex, suggesting potential for mineralisation.

➤ **T8 (Auger 3):** Surface geochemical sampling has delineated a strong Au anomaly, with the geochemical footprint extending approximately 550 m x 600 m. The anomaly remains untested by drilling. The target area consists of three parallel NW–SW trending magnetic highs.

For personal use only

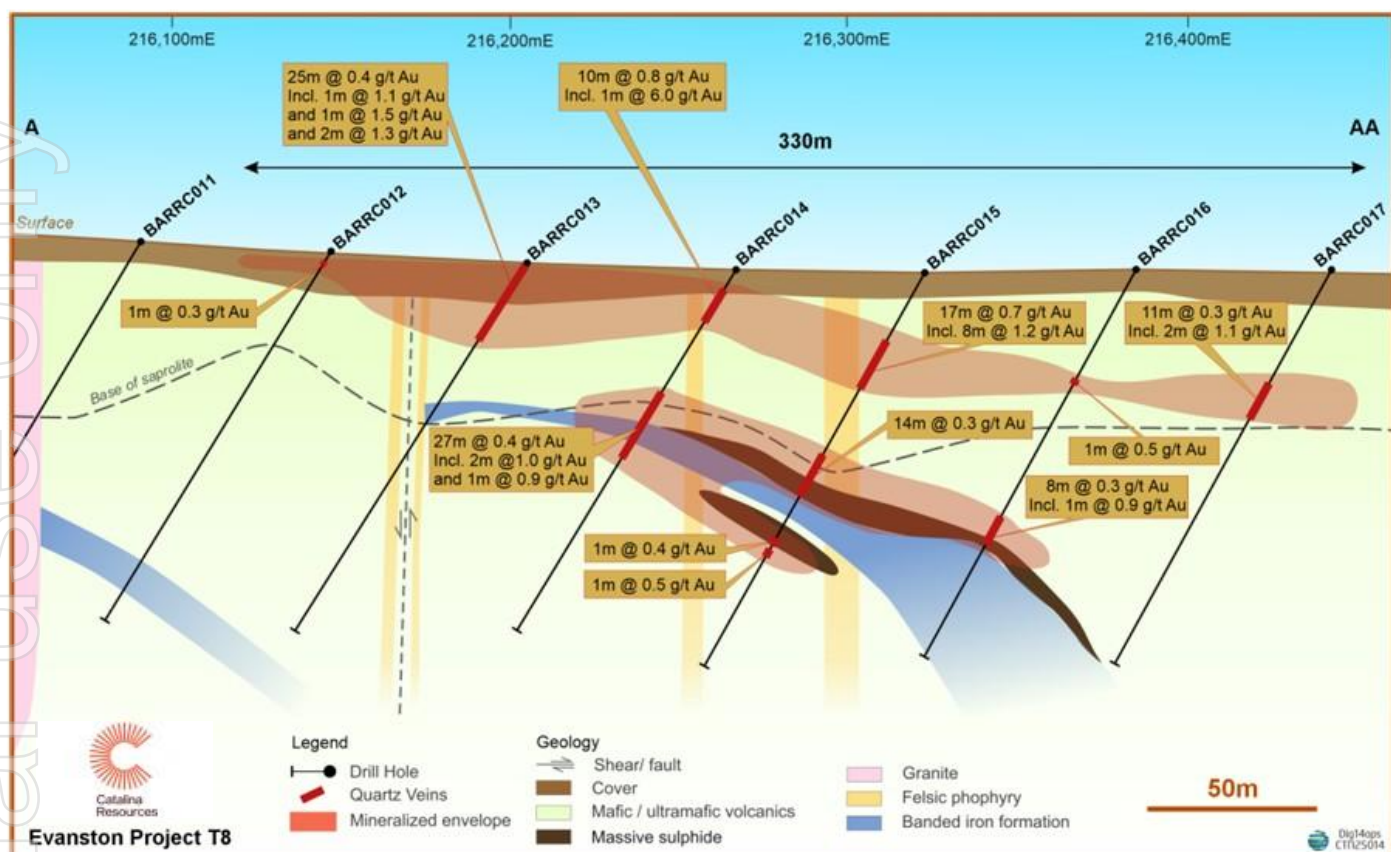


Figure 8. Cross section A-AA at T8 showing drill intersections and gold mineralised envelope¹

For personal use only

For personal use only

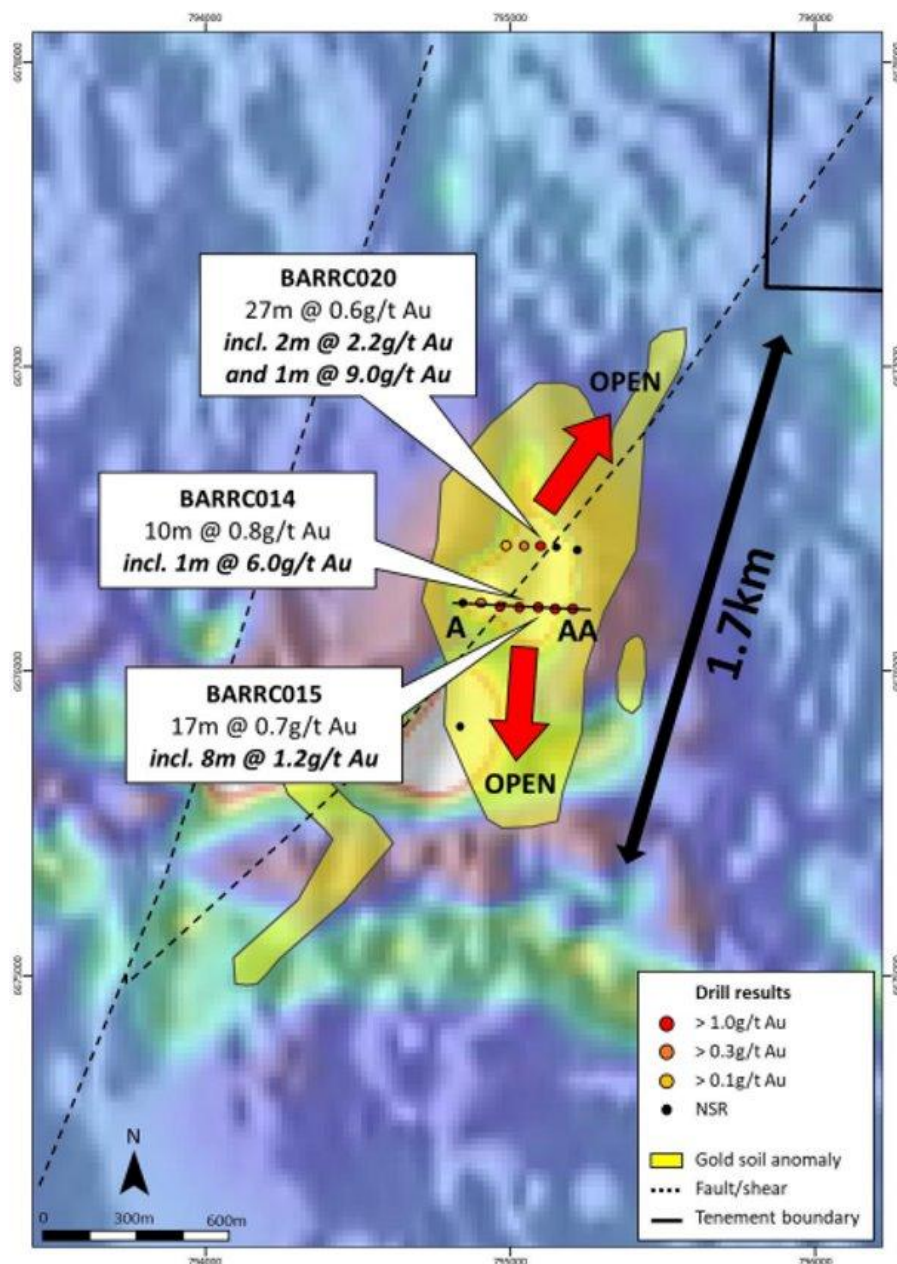


Figure 9. T8 Prospect showing significant gold intersection, drill Geology¹

Planned Exploration Program

Heritage

Catalina has formally initiated the heritage clearance process with the relevant Traditional Owner group. Catalina remains committed to conducting all on-ground activities in accordance with statutory requirements and in consultation with Traditional Owners. Expected completion of heritage survey is late November 2025.

Exploration Activities

Catalina will commence an integrated field program across the Central Yilgarn Project incorporating both surface geochemical and drilling activities.

Soil sampling:

- A systematic soil-sampling program will begin immediately to refine and extend existing geochemical anomalies at Viper SE, T1E, T8, and Auger 2, and to validate historical datasets across the broader Central Yilgarn corridor.

Drilling campaign:

Once heritage clearances have been obtained, Catalina will proceed with a combined Air-core and Reverse Circulation (RC) campaign in December 2025.

- Air-core screening will test untested or lightly tested anomalies at Viper SE, T1E, Chicken Little, and Snowflake.
- Initial RC drilling will target Viper North, T1B, Leghorn, T8, and Auger 2, focusing on extensions of known mineralisation and structurally favourable contacts.
- Follow-up RC drilling will be contingent upon assay results and geological interpretation from this campaign.

This sequencing allows Catalina to advance target definition and maintain project momentum while cultural heritage assessments are completed.

Executive Director Ross Cotton commented that:

“The review has confirmed clear priorities for our next phase of work, and the team is ready to get on the ground. With heritage clearances under way and programs designed to build directly on known mineralisation, we’re focused on drilling as soon as possible. The quality of the geology across this belt is increasingly evident — recent results from our neighbours have reinforced just how prospective this underexplored region is.”

This announcement has been authorised for release by the Executive Director.

Contacts

Investors / Shareholders

Ross Cotton
Executive Director

T: +61 (0)8 6165 8858

References (ASX)

This Report contains information extracted from ASX market announcements reported in accordance with the 2012 edition of the “Australasian Code for Reporting of Exploration Results, Mineral Resources and Ore Reserves” (“2012 JORC Code”). Further details (including 2012 JORC Code reporting tables where applicable) of exploration results referred to in this announcement can be found in the following announcements lodged on the ASX:

¹ See ASX announcement dated 12 December 2024 for full details of previously reported exploration results. [Updated Acquisition of Yerilgee & Evanston](#)

² See ASX Announcement date 6 October 2024 for full details of announcement Leeuwin Metals results [Shallow High-Grade Gold from First Drilling at Evanston](#)

Information relating to Leeuwin Metals Ltd (ASX: LM1) has been sourced from its ASX announcement dated 6 October 2025. Catalina has not verified this information and makes no representation that mineralisation reported by Leeuwin extends onto Catalina’s tenements.

The Company confirms that it is not aware of any new information or data that materially affects the information in the original reports, and that the form and context in which the Competent Person’s findings are presented have not been materially modified from the original reports.

Competent Person Statement

- 1) The information in this announcement that relates to historical exploration activities and results contained in this report is based on information compiled or reviewed by Martin Bennett, a Member of the Australian Institute of Geoscientists (AIG). He is a Non Executive Director of Catalina Resources Ltd. He has sufficient experience which is relevant to the style of mineralisation and types of deposits under consideration and to the activity which he is undertaking to qualify as a Competent Person as defined in the 2012 edition of the Australasian Code for Reporting of Exploration Results, Mineral Resources and Ore Reserves (the JORC Code). Catalina confirms that it is not aware of any new information or data that materially affects the information contained in the original reports, and that the form and context in which the Competent Person’s findings are presented have not been materially modified from the original reports. Mr Bennett’s consent to the use of his original information is assumed to remain in place for this announcement.
- 2) The information in this announcement that relates to technical assessments and exploration targeting compiled by Mr. S Nicholls, who is a Member of the Australian Institute of Geoscientists and full time employee of Apex Geoscience. Mr Nicholls has sufficient experience which is relevant to the style of mineralisation and type of deposit under consideration and to the activity which he is undertaking to qualify as a Competent Person as defined in the 2012 Edition of the ‘Australasian Code for Reporting of Exploration Results, Mineral Resources and Ore Reserves’. Mr. Nicholls consents to the inclusion in the report of the matters based on his information in the form and context in which it appears.

Where the Company refers to the Mineral Resources in this report (referencing previous releases made to the ASX), it confirms that it is not aware of any new information or data that materially affects the information included in that announcement and all material assumptions and technical parameters underpinning the Mineral Resource estimate with that announcement continue to apply and have not materially changed.

Forward-Looking Statements

This announcement contains forward-looking statements that are subject to a range of risks and uncertainties. These statements relate to the Company's expectations, intentions, or strategies regarding the future. These statements can be identified by the use of words like "anticipate", "believe", "intend", "estimate", "expect", "may", "plan", "project", "will", "should", "seek" and similar words or expressions containing same. These forward-looking statements reflect the Company's views and assumptions with respect to future events as of the date of this release and are subject to a variety of unpredictable risks, uncertainties, and other unknowns. Actual and future results and trends could differ materially from those set forth in such statements due to various factors, many of which are beyond our ability to control or predict. These include, but are not limited to, risks or uncertainties associated with the acquisition and divestment of projects (including risks associated with completing due diligence and, if favourable results are obtained, proceeding with the acquisition of the Beasley Creek Project), joint venture and other contractual risks, metal prices, exploration, development and operating risks, competition, production risks, sovereign risks, regulatory risks including environmental regulation and liability and potential title disputes, availability and terms of capital and general economic and business conditions.

Given these uncertainties, no one should place undue reliance on any forward-looking statements attributable to the Company, or any of its affiliates or persons acting on its behalf. Subject to any continuing obligations under applicable law the Company disclaims any obligation or undertaking to disseminate any updates or revisions to any forward looking statements in this announcement to reflect any change in expectations in relation to any forward looking statements or any change in events, conditions or circumstances on which any such statement is based.

ABOUT CATALINA RESOURCES LIMITED

Catalina Resources Limited is an Australian diversified mineral exploration and mine development company whose vision is to create shareholder value through the successful exploration of prospective gold, base metal, lithium and iron ore projects and the development of these projects into production.