



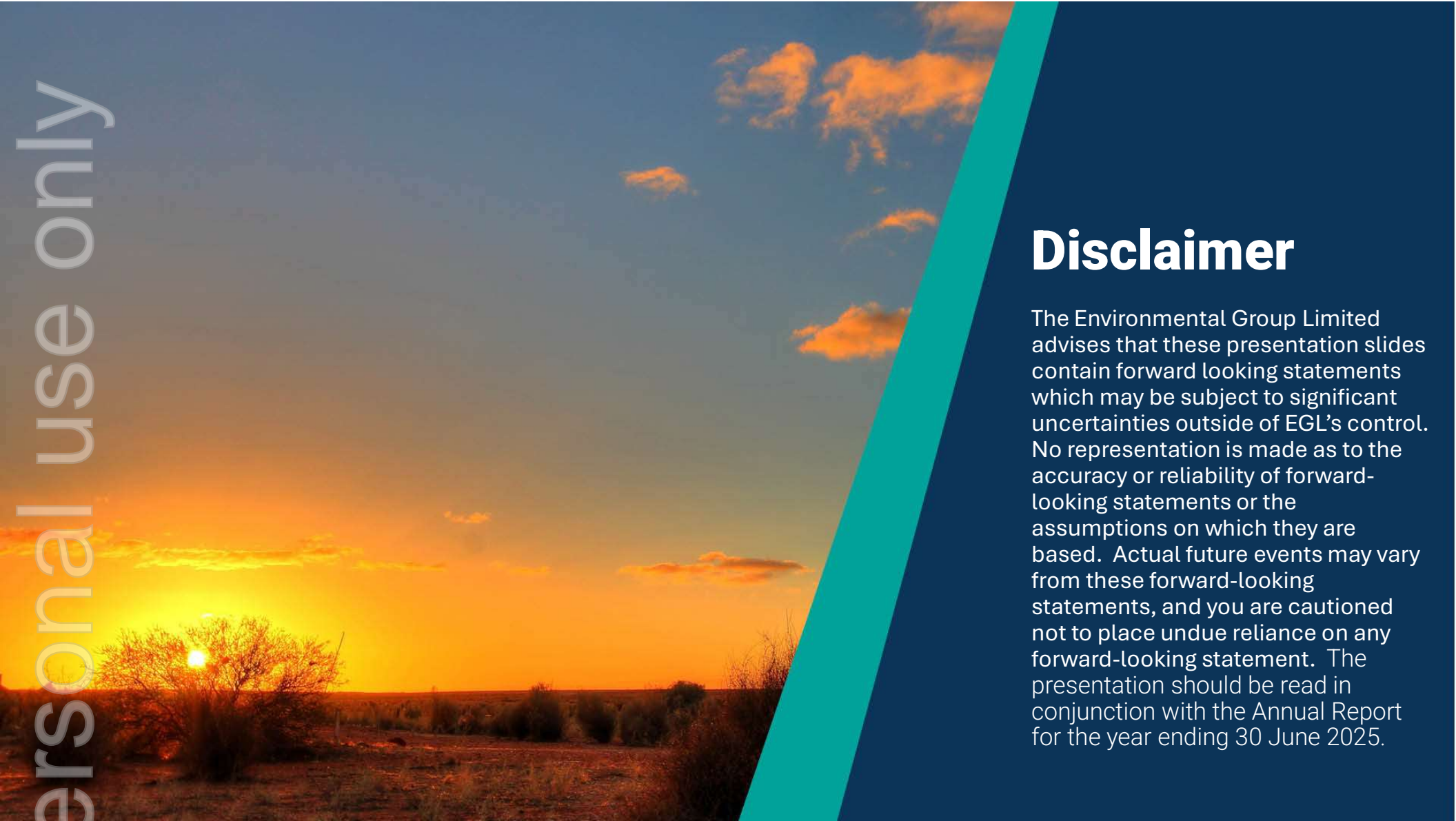
The Environmental
Group Limited
Engineering a Sustainable Future

Jefferies Corporate Summit 2025

© The Environmental Group Limited 2025




For personal use only



Disclaimer

The Environmental Group Limited advises that these presentation slides contain forward looking statements which may be subject to significant uncertainties outside of EGL's control. No representation is made as to the accuracy or reliability of forward-looking statements or the assumptions on which they are based. Actual future events may vary from these forward-looking statements, and you are cautioned not to place undue reliance on any forward-looking statement. The presentation should be read in conjunction with the Annual Report for the year ending 30 June 2025.

For personal use only



Engineering a
Sustainable Future
to enhance the circular
economy through strong
ESG principles.

Key Highlights **FY25**



\$111.9M

Revenue up 13.9% on PCP



\$11.1M

Underlying¹ EBITDA up 9.9% on PCP



\$8.1M

Underlying¹ EBIT up 7.8% on PCP



\$4.7M

NPAT up 7.3% on PCP



\$53M

Recurring revenue, largely service and maintenance



86%

Underlying¹ EBITDA Up 86% on 1HFY25



381,000

Hours worked



\$5.5M

Strategic business acquisitions



CE & ISO

All CE & ISO Certification maintained

¹ Underlying earnings exclude acquisition costs \$808K, ERP Implementation costs \$307K, Performance Rights \$163K, Restructuring costs \$97, Foreign exchange gains (\$214K).

FY25 Financial Results Highlights

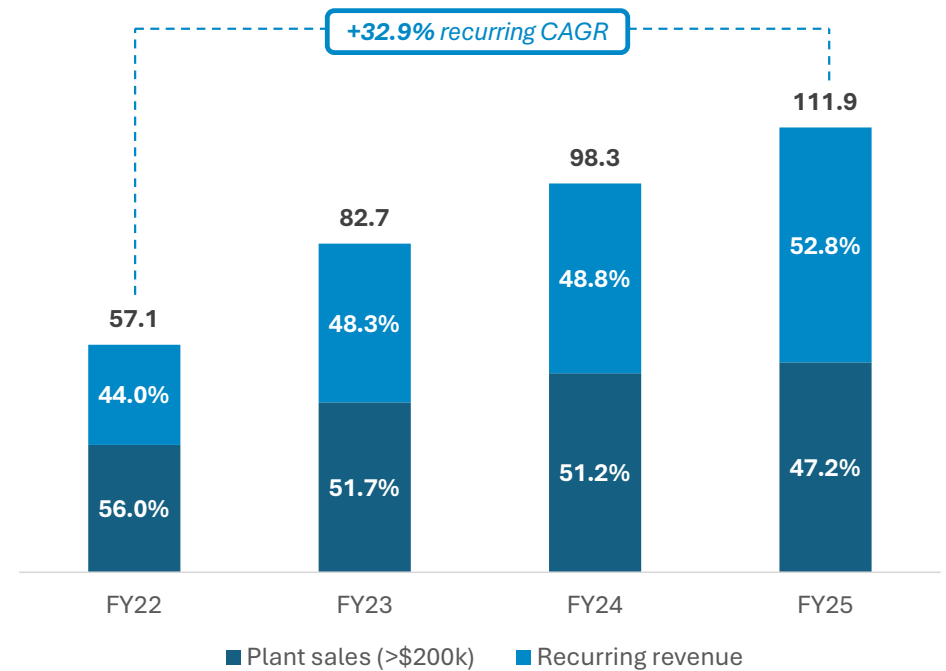
Most of EGL's revenue is contracted

- 53% of EGL's revenue is contracted or recurring in nature.
- Comprises maintenance services contracts, regular service work, ad-hoc repairs, spare parts and water processing service charges.

EGL's recurring revenue base has been growing

- EGL's contracted or recurring revenue has grown over time.
- Strategic acquisitions have contributed to this growth.
- Recurring revenue's contribution is expected to continue to grow, as the plants are put into operation, requiring more service and spares.

EGL revenue mix over time





For personal use only

01

Operating Units

EGL Energy

Regulated by Australian standards requiring all steam boilers to be serviced & inspected on mandatory intervals.

EGL Baltec

Turbine noise emission requirements are driven by EPA or equivalent as well as social responsibility.

EGL Clean Air

Driven by both the requirements of the EPA for emissions and WorkSafe to provide safe working environments.

EGL Waste Services

The waste industry is highly regulated by the EPA to ensure environmental compliance.

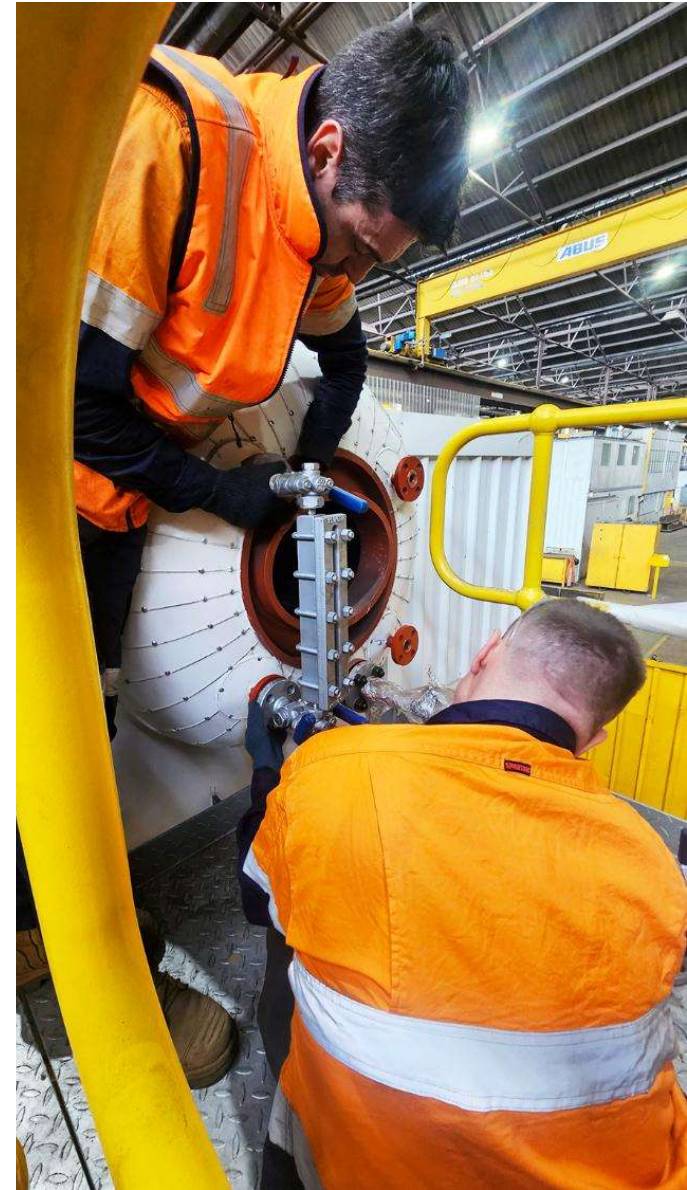


personal use only



EGL Energy offers a service network across Australia providing 24/7 sales, service, maintenance and repairs of boilers, gas-fired equipment and other original equipment manufacture, optimising energy efficiency.

- Our design is the most energy efficient water tube boiler available in Australia.
- Service and maintenance of gas-fired equipment, makes up approximately 74% of earnings.
- Ongoing service and maintenance of boilers, burners and steam equipment through Australia's only national network of service technicians.
- Continued growth of new boiler sales and product sales.
- Service revenue above expectations for the FY25 period.
- Improved EBITDA margin of 14.2%.
- Expanded product offering and additional scale from acquisition of Advanced Boilers & Combustion in April 2025.
- Additional technicians added to support the continued strong growth in the business.

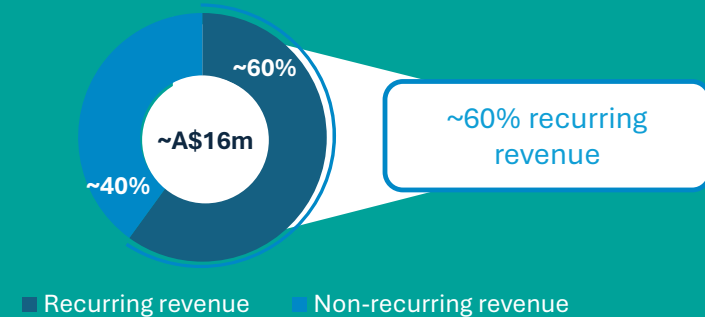




EGL Energy - Advanced Boilers & Combustion (Advanced) acquisition update

- Acquired early April 2025 for A\$5.5m from existing cash reserves.
- Advanced's FY24 revenue of \$16m and normalised EBITDA of \$1.6m.
- The acquisition represents a major expansion of EGL's sales and service offering to the industrial boiler industry.
- Advanced owns exclusive rights to Maxitherm boiler technology, expanding EGL's offering to the larger industrial market.
- Advanced brings incremental and complementary expertise in fabrication, boiler fit out, economisers, pipe welding, skid manufacture and control panels.
- Provides fabrication facility and capability for all EGL PFAS plant sales.
- Strong cultural alignment, with integration complete.

Advanced FY24 Illustrative revenue mix





EGL
BALTEC

for personal use



EGL Baltec provides a range of specialist services to the global gas turbine power industry as it moves to support renewable energy.

- The gas turbine market is changing requiring the conversion of base load power plants to run as peaking load turbines to support renewables.
- Baltec leads the market in its design of silencers suitable for gas turbines running in peaking load.
- The IP generated by the engineering team is world-leading and has positioned the business for further growth in the future.
- Strong revenue performance, in line with expectations..
- Gas-generated power demand also underpinned by increasing power supply requirements of data centers.
- Industry sources note that orders for new gas turbines are in significant backlog, with some orders unable to be fulfilled until 2030.



For personal use only



EGL
CLEAN AIR



EGL Clean Air provides engineering, supply, installation, commissioning and ongoing service support for a wide range of Industrial Air Pollution Control Systems.

Technologies include:

- Wet & Dry Scrubbers
- Bag Filters
- Electrostatic Precipitators
- Flue gas desulphurization
- Thermal Oxidizers
- Selective Catalytic Reduction

For control of all emissions to air, including:

- Gaseous pollutants
- Mists and vapours
- Particulate matter
- Odorous compounds
- Carbon capture

- Dry fogging systems have been gaining traction in the market.
- Continued pull-through demand from EGL Waste in new waste plant installations.
- Management are actively repositioning the segment for future growth in non-lithium sector markets.





EGL
WASTE SERVICES

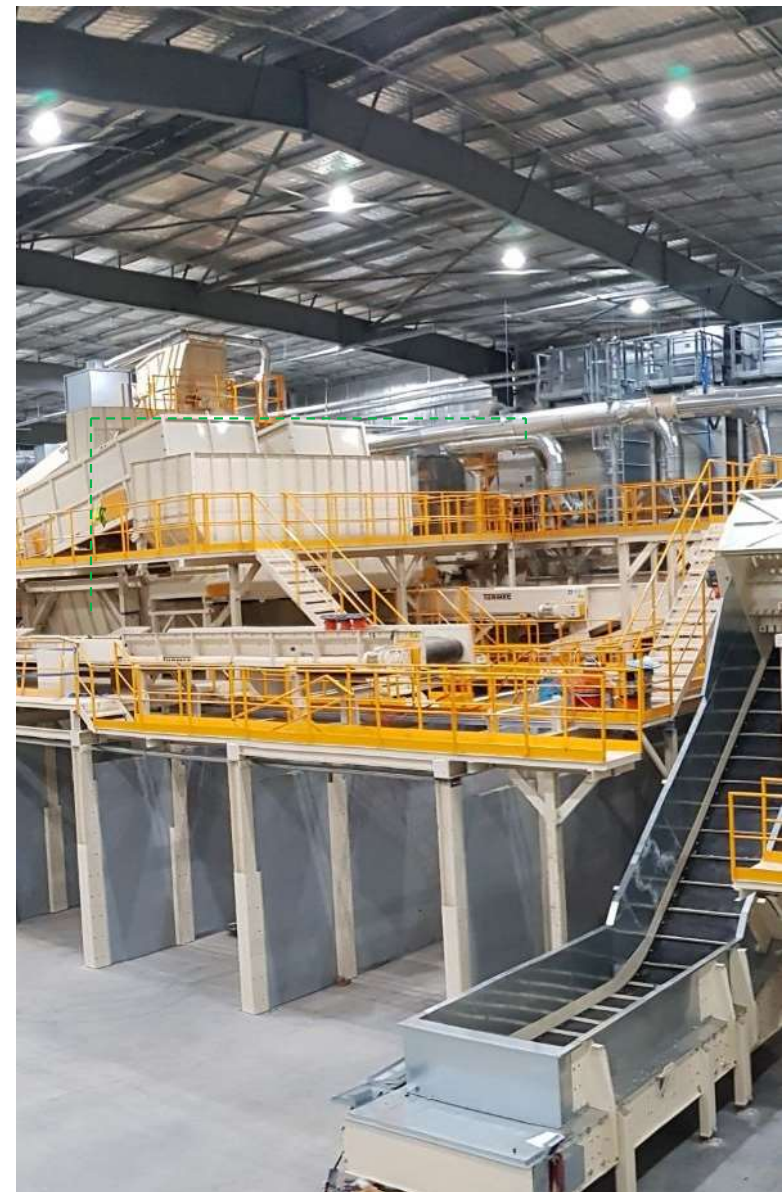
for personal use only



EGL Waste division brings together our service lines to provide integrated solutions to the waste industry.

The National Waste Policy Action Plan requires an 80% average resource recovery rate from all waste streams following the waste hierarchy by 2030. That is an increase of 17% or 12.9MT more resource recovery in the next 6 years.

- Turmec's recycling plants under the exclusive Australian agency and can achieve a 98% recovery rate for C&D/C&I waste streams.
- Dust extraction and asbestos detection systems in waste processing facilities.
- Boilers & autoclaves in the medical waste treatment sector.
- Combustion technologies for biomass boilers and waste to energy plants.
- PFAS and liquid waste treatment plants.
- After-sales service and parts.



01

We expect normalised EBITDA growth in FY26 to be in the range of 15-20% compared to FY25.

02

EGL has met guidance each year and sustainably grown the business organically and via targeted strategic acquisitions.

03

EGL will continue to reinvest cashflow into the business to continue to execute on management's growth strategy and focus on building recurring revenue streams and expanded margins.

04

Recurring revenue streams are expected to continue to grow in FY26.



for personal use only

2

Questions

Appendix A

Reconciliation of Statutory (4E) to underlying results

FY25 (\$M)	4E	Less Significant Items	Underlying Business
Revenue	111.9		111.9
Costs of sales	(79.2)		(79.2)
Gross profit	32.8		32.8
Employee expenses	(13.8)		(13.8)
Professional fees	(2.1)		(2.1)
Travel expenses	(1.8)		(1.8)
Marketing expenses	(0.4)		(0.4)
Occupancy expenses	(1.0)		(1.0)
Other expenses	(3.7)	1.2	(2.5)
Operating EBITDA	11.1	1.1	11.1
Depreciation and amortisation	2.9		3.0
EBIT	8.1	1.2	8.1
Interest income	0.03		
Interest expense	(0.7)		(0.7)
Profit before tax	6.3	1.2	7.4
Tax expense	(1.6)		(1.6)
Profit after tax	4.7	1.2	5.8
Earnings per share (EPS)	0.0123		0.0153

Significant Items Reconciliations	\$M
Performance rights	0.16
Acquisition & integration costs	0.81
Restructuring cost	0.10
ERP	0.31
FX	(0.21)
Total	1.16



The Environmental
Group Limited
Engineering a Sustainable Future

HEAD OFFICE

Suite 2.01 | Level 2
315 Ferntree Gully Road
Mount Waverley
Victoria 3149

Phone: 03 9541 8699
ABN: 89 000 013 427

environmental.com.au

Disclaimer:

The Environmental Group Limited advises that these presentation slides contain forward looking statements which may be subject to significant uncertainties outside of EGL's control. No representation is made as to the accuracy or reliability of forward-looking statements or the assumptions on which they are based. Actual future events may vary from these forward-looking statements, and you are cautioned not to place undue reliance on any forward-looking statement. The presentation should be read in conjunction with the Annual Report, for the year ending 30 June 2025.