

ASX ANNOUNCEMENT

10 October 2025

**GEORGETOWN PROJECT MINERAL RESOURCE UPDATE:
JUBILEE PLUNGER DEPOSIT**

Savannah Goldfields Limited ("Savannah" or "the Company") (ASX:SVG) is pleased to provide an update to the Jubilee Plunger Mineral Resource, part of its Georgetown Project located approximately 480 kilometres southwest of Cairns in Far North Queensland.

The Jubilee Plunger Deposit is located approximately 80 kilometres south of the Company's Georgetown Gold Processing Plant.

Following collation and re-interpretation of the historic drilling data the model for the mineralised structures were extended towards the south, north and northeast of the existing partially completed open pit and the focus of the previous Mineral Resource.

Highlights

- Jubilee Plunger Mineral Resource is 296,000 tonnes at 2.1 g/t Au and 17 g/t Ag containing 20,000 oz Au at a 1.0 g/t Au cut-off and has been classified as:
 - Indicated 98,000 tonnes at 2.4 g/t Au & 16 g/t Ag containing 8,000 oz Au
 - Inferred 198,000 tonnes at 2.0 g/t Au & 17 g/t Ag containing 12,000 oz Au
- Indicated Mineral Resource for Jubilee Plunger has been reported for the first time.
- A 220% increase in total contained gold in Jubilee Plunger Mineral Resource from the Mineral Resource reported 7 February 2022.
- The combined Mineral Resource at the Company's Georgetown Projects is now 1,159 kt at 3.5 g/t Au containing 131,000 oz Au.
- Combined Mineral Resource at the Company's Georgetown and Agate Creek projects is now 16.65 Mt at 1.03 g/t Au containing 553,000 oz Au.

Savannah's CEO, Brad Sampson, commented:

"As we move towards resumption of gold production at our Georgetown Gold Processing Plant we have also commenced exploration to identify additional potential near term ore sources and to extend the processing life at Georgetown. The progress we have already made in this area is very pleasing and this increase in gold Mineral Resource is value adding to shareholders."

Location

Jubilee Plunger is located approximately 31 km southeast of the township of Forsayth in far north Queensland. The Jubilee Plunger Mineral Resource is located within the granted mining lease ML3374 (Robin Hood ML). The mining lease is contained within Savannah's EPM26460 (Figure 1) and is approximately 80 km by road to the Georgetown Gold Processing Plant.

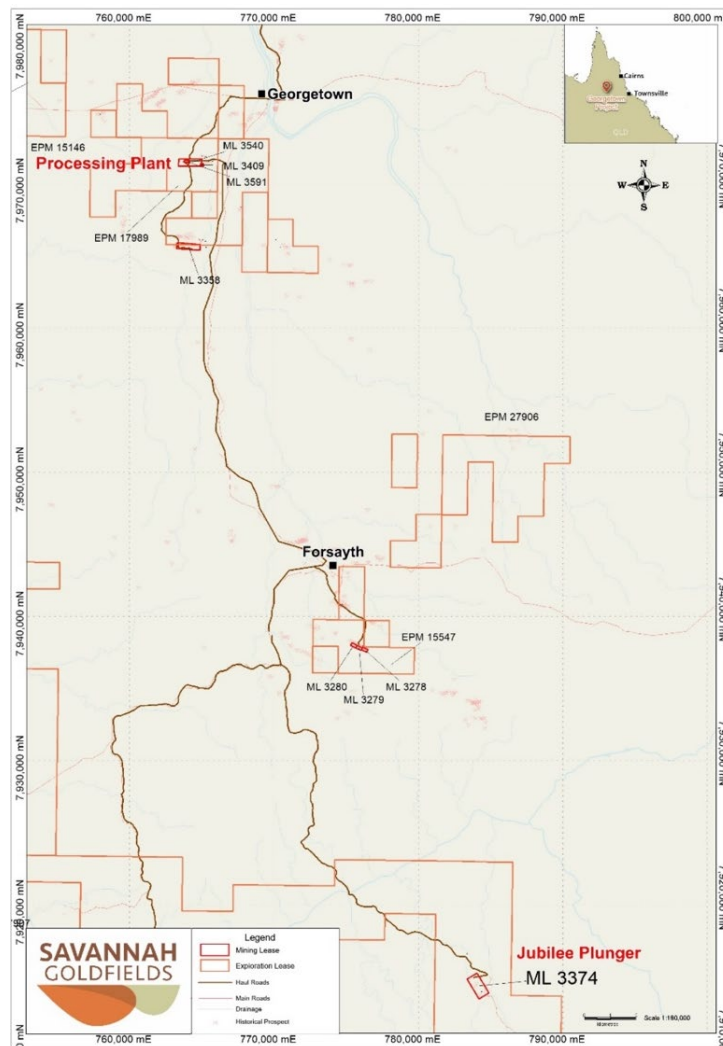


Figure 1 Location of Jubilee Plunger relative to Georgetown processing Plant

Mineral Resource

An updated Mineral Resource Estimate (JORC2012) has been completed on the Jubilee Plunger gold Deposit in far north Queensland that includes additional geological understanding and new geological interpretation that has been developed since the last Mineral Resource reported on 7 February 2022.

For personal use only

The updated Jubilee Plunger Mineral Resource is shown in Table 1 at a 1.0 g/t Au cut-off grade.

Table 1: Jubilee Plunger Mineral Resources at a 1 g/t Au cut-off

Classification	tonnes	Au g/t	Ag g/t	Density t/m ³	Oz Au
Indicated	98,000	2.4	16	2.47	8,000
Inferred	198,000	2.0	17	2.40	12,000
Total	296,000	2.1	17	2.42	20,000

All tonnages and ounces are rounded to thousands

The additional data collation and correction and geological review of the areas surrounding the previous Jubilee Plunger Mineral Resource revealed significant extensions of the gold mineralised structures at Jubilee Plunger in addition to that previously interpreted and estimated.

This update also includes revision of the oxide and sulphide material types (Table 2). Historical logging of oxidation was limited and sulphides were generally encountered at depths of approximately 20 m below surface. The current weathering assumptions in the Mineral Resource Estimate are based on a conservative interpretation of the historic mining and the base of oxidation has been set at a depth of 15 m below surface. The majority of the potential oxide material is located to the south of the Jubilee Plunger open pit at a prospect known as Lady Mary.

Table 2: Jubilee Plunger Mineral Resources by Material Type at a 1 g/t Au cut-off

Material type	Classification	tonnes	Au g/t	Ag g/t	Density	Au koz
Oxide	Indicated	7,700	2.0	8	2.2	0.5
	Inferred	61,600	1.8	18	2.2	3.6
	Sub-total	69,400	1.8	16	2.2	4.1
Fresh/Sulphide Potential	Indicated	90,300	2.5	17	2.5	7.1
	Inferred	136,000	2.0	17	2.5	8.9
	Sub-total	226,300	2.2	17	2.5	16.1

Minor errors in rounding may exist in the information provided in this table

Mineral Resource comparison to previous estimate

The previous Jubilee Plunger Mineral Resource reported on 7 February 2022 in ASX announcement titled "Georgetown Project Mineral Resources" at a 1 g/t Au cut-off was an Inferred Mineral Resource of 87,000 tonnes at 3.2 g/t Au and 21.3 g/t Ag containing 9,000 oz Au.

This previous Mineral Resource was based on interpretations and models used for open pit mining at Jubilee Plunger from August to October 2011.

The central portion of the Mineral Resource area remains largely unchanged in this re-interpretation and updated Mineral Resource Estimate. The significant increase in tonnes and

For personal use only

contained gold arises from extensions along strike, predominantly towards the south but also towards the north and along a new north-eastern gold mineralised structure.

The change in classification to Indicated is a result of greater confidence in the historic drilling data following data review and collation of missing drilling data including grade control blast hole sampling.

Mining History

There has been historic small scale mining at Jubilee Plunger and Lady Mary. This appears to have been largely via small scrapings / gougings and there is also evidence of historic underground mining such as a small shaft that remains at Lady Mary. Historic production is understood to have been minor and some evidence of the historic mining activity remains visible at lady Mary (Figure 2).



Figure 2: Lady Mary historic gouging (photographed 12/8/2022)

Deutsche Rohstoff Australia Pty Ltd (DRAU) undertook mining of three of the Georgetown Mineral Resources area, Electric Light, Red Dam and Jubilee Plunger from 2010 to 2012 in conjunction with some minor surface ore sourced from around the central Georgetown mill leases.

Mining at Jubilee Plunger by DRAU was halted when the base of oxidation was intersected. The remaining small open pit void is currently partially flooded (Figure 3).



Figure 3: Jubilee Plunger pit

Regional Geology and Setting

The Georgetown deposits are located within the northern part of the Georgetown inlier, which is made up of crystalline basement early to middle Proterozoic rocks. The deposits occur within the Etheridge Goldfield and comprise small mesothermal veins and lenses of gold and sulphide typical of Siluro-Devonian age.

Jubilee Plunger is an approximately 1200 m long shear zone of sericitised and quartz-veined Robin Hood Granodiorite between Oaky Creek and the north-western margin of the Robin Hood pluton. There is one main structure and additional hanging wall and extensional veins. Veining is more discontinuous and of a lower grade with veins dipping at a shallower 30 to 40°.

Mineralisation Interpretation

Interpretation of the mineralisation was undertaken at a 0.5 g/t Au cut-off to define the continuity of the mineralising structure (Figure 4). Particularly at Lady Mary the mineralisation will often peter out towards surface. It is unclear if this is a result of near surface gold depletion/leaching in the oxide or is partially related to historic workings and mining.

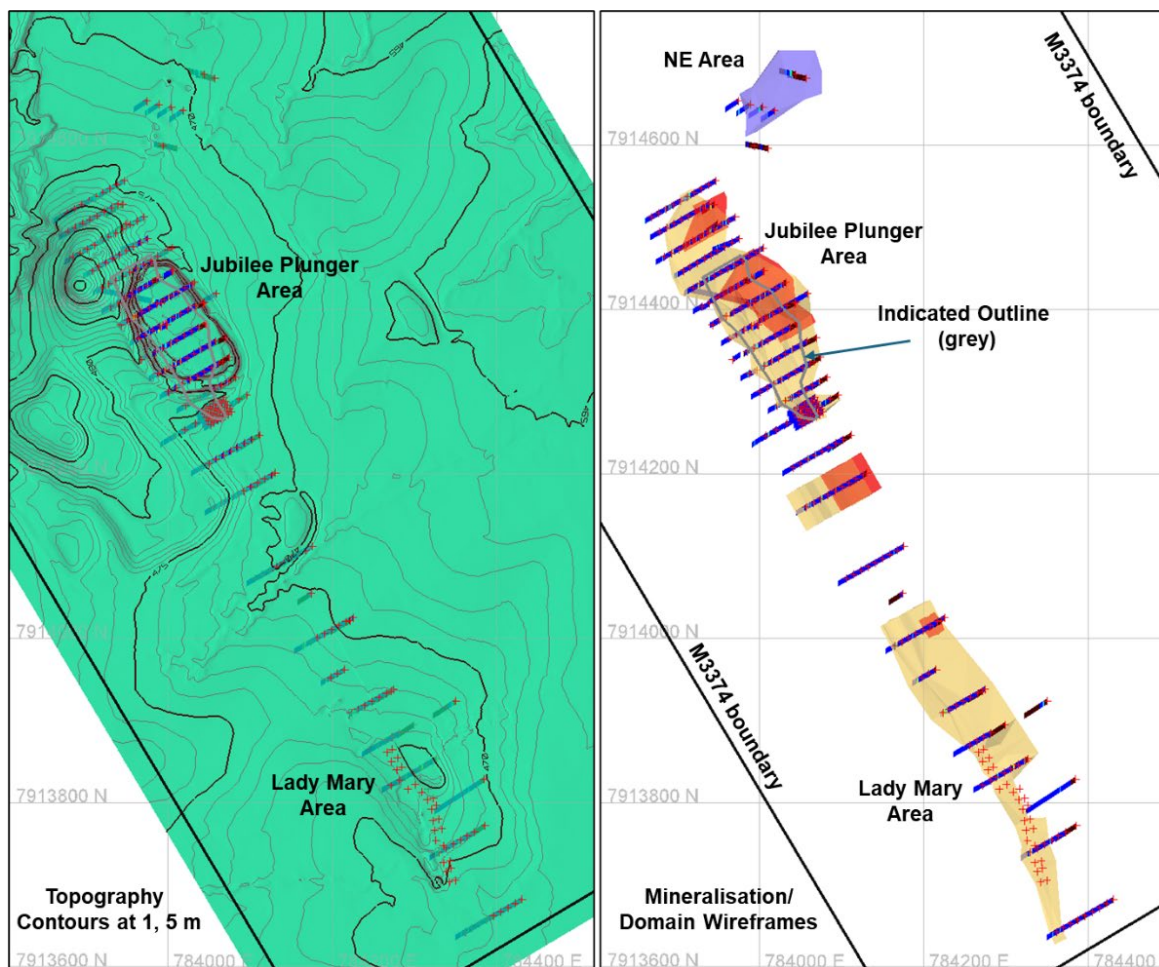


Figure 4: Jubilee Plunger drill locations and Mineral Resource domains

Drilling Techniques

Table 3 summarises the drilling data available for the Jubilee Plunger Mineral Resource area and within ML3374 and excludes regional exploration drilling which is outside the resource area but within the encompassing exploration permit.

The most significant drilling program was percussion drilling which was undertaken early in the 1980s and included open hole methods. Down hole smearing has been noted in some holes and remains a concern as the water table is relatively shallow and many early holes would have suffered wet sampling conditions. These issues were avoided as drilling progressed to RC face sample drilling and the use of larger air compressors from the mid-1990s. At Jubilee Plunger smearing was not evident but may be difficult to identify with the low tenor of grade.

Little is known about the sample recovery of the early percussion drilling. Drilling conditions at Jubilee Plunger should be reasonable as the material is reasonably siliceous.

DRAU completed pit grade control sampling of blast holes by sampling the 5 m holes as two 2.5 m fitches. They also completed some pre-mining trenches. Both of these data sets support the Mineral Resource and were reviewed and considered but not used directly for grade estimation.

DRAU used the same blast hole drill rig for a small infill drill RAB program at Lady Mary, the holes were sampled at 1 m intervals, the holes drilled to a maximum depth of 28 m.

Table 3: Jubilee Plunger drilling and sampling program summary for ML3374

Company	Year	Drilling/Trenching				
		Type	Holes	Length m	Hole Name Prefix	Notes
BMR / GSQ (Govt. Surveys)	1977	Diamond	2	159	DDH	
HSE – Howard Smith Exploration	1980-1	Percussion	255	7191.5	RH & JP	
KID – Kidston Gold Mines	1989	RC	1	162	JPRC	
DRAU Deutsche Rohstoff Australia	2010	Costeans*	8	332	JPT	
	2011	RAB	26	477	LM	1m samples using blast hole rig
	2011	RAB*	1414	7070	1 to 1511	2.5 m sample from 5 m blastholes
	2012	RC?*	1	21.4	JPGW2R	Water bore
Total of holes used for MRE			284	7989.5		

* Costean and RAB grade control drilling not used for Mineral Resource estimation

Sampling and sub-sampling

The Howard Smith 1980-81 exploration programme used 1.5 m intervals with most other drilling sampled on 1 m intervals.

Sampling practises are not well described but where defined included cyclone and riffle splitting to 1/8 for Percussion and RC sampling. Diamond core was half or quarter core sampled with quarter core used when metallurgical sampling was required.

Some costeaning was undertaken with sampling on 1 or 2 m intervals along the trench. Sampling practises were not well described but results are consistent with drill hole sampling and used for interpretation purposes only. In many cases these will have been mined out and have little impact on the remaining Mineral Resource estimate.

Blast holes samples were on two 2.5 m fitches.

Sample Analysis

Sample preparation was undertaken at commercial laboratories prior to analysis and where described is within industry practise. All assaying for gold was by fire assay.

For personal use only

HSE assaying (1980-81) was at Pilbara laboratories in Perth and comprises the majority of the Jubilee Plunger drilling dataset. Reported QAQC is restricted to over 500 check assaying which had variable results but generally higher values were reported in the check assays.

Kidston Gold Mines drill hole (1989) samples were assayed at Analabs in Townsville by 50 g fire assay for Au (method GG313) and by ICP for Cu, Pb, Zn, As, Mo, Bi, Sb and S (method GI107).

DRAU (2011) drilling and blast holes sampling was by Genalysis Laboratories in Townsville. Analysis was Fire Assay (FA25/AA) for Au and method AR01/OE for Ag, As, Cu, Fe, Pb, Zn with elements other than Ag only reported in suspected sulphides zones.

The current digital database includes no QAQC sampling for review and the current assessment relies on previous summaries and notes which are limited to HSE drilling.

The Mineral Resource relies on mostly historic data however this uncertainty is offset against production information from the model to mine reconciliation that suggest the HSE data that dominates the Jubilee Plunger data set pit is reliable.

Estimation Method

Estimation of a block model was by inverse distance squared within enclosed domains using 1 m composites. Three domains were modelled and estimated separately using a search of 80 m by 80 m by 20 m orientated parallel to the dipping structure.

A maximum of 20 composites per estimate and 4 composites per drill hole were used with 2 by 2 by 2 discretisation of the model parent blocks.

Block model sizes for mineralised domains were 5m by 5m by 2.5 m and sub-blocked to 2.5m by 2.5 m by 1.25 m.

High grade cuts were applied for precious metal estimation of gold and silver and adjusted for the high and low grade domains which were modelled as follows:

12 g/t Au, 80 g/t Ag for the main domain or

8 g/t Au, 30 g/t Ag for lower grade domains

Although the grade control blast hole drilling was not used for estimation, comparisons with the resource drilling interpretation and estimates, indicates that it is largely consistent with the modelled thickness and grade (Figure 5 right). Figure 5 and Figure 6 indicate examples of the dip and width of mineralisation drilled and estimated.

For personal use only

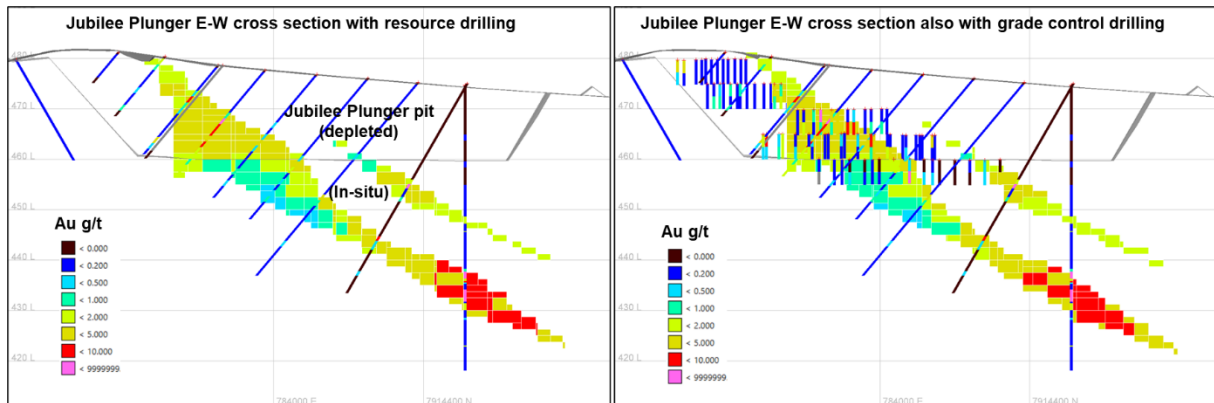


Figure 5: Jubilee Plunger example cross section

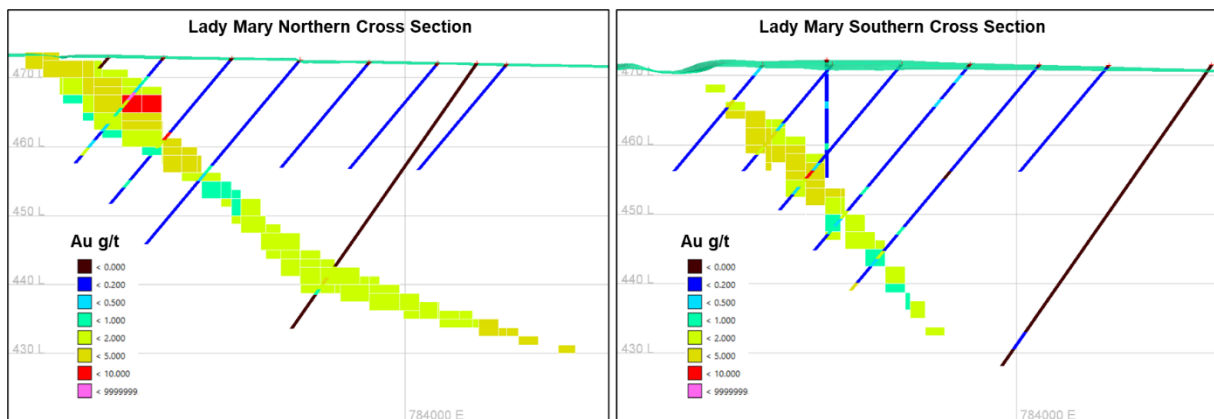


Figure 6: Lady Mary example cross sections

Resource Classification

All the exploration data is historic and in the previous Mineral Resource estimate reported in 2022 all of Jubilee Plunger mineralisation was classified as Inferred. However, the Jubilee Plunger pit was regularly drilled on 25 m by 8 m centres down to a depth of approximately 40 m below surface and then slightly wider on up to 25 m centres down to a maximum depth of 60 m below surface. A small southern pod is drilled on 5 m centres down to a 20 m depth below surface. These drill spacings support a higher classification of Mineral Resource and are sufficient to support mine design.

The Mineral Resource classification was reviewed and updated to include blocks where interpreted and domains as:

- Indicated for drilling with a 25 m by 8 m spacing at Jubilee Plunger (see Figure 4) or
- Inferred where within 35 m of a drill hole.

At this stage the Lady Mary areas although drilled to 8 m by 25 m spacing relied heavily on RAB sampling with slightly lower sampling quality and is therefore classified as an Inferred Mineral Resource.

Cut-off Grades

A cut-off grade of 1 g/t Au has been applied. Jubilee Plunger is 80 km by road to the Georgetown processing facility. At the current gold price 1 g/t Au is at or just below the estimated marginal cost for processing and haulage from Jubilee Plunger to Georgetown. Given the lower tenor of grade and only moderate dip of the mineralisation at Jubilee Plunger compared to other Georgetown deposits significantly higher cut-off may prove challenging to achieve an economic target. However, at thresholds around 1 g/t Au there should be sufficient mining width to achieve a minable target.

Gold and silver mineralisation at depth is associated with sulphides that will require changes to any existing plan of operation and a new sulphide circuit for ore processing.

Mining Considerations

Savannah Goldfields is only considering open pit mining at Jubilee Plunger. An existing open pit was started by DRAU and was abandoned with reportedly ore blasted and available in existing open floor benches (currently underwater in Figure 3). Jubilee Plunger is wholly within the mining lease ML 3374.

Metallurgical Considerations

The Georgetown plant operations from 2009 to 2013 treated oxide ore from several deposits, including Jubilee Plunger and successfully achieved recoveries >80% Au.

Normet Pty Ltd completed grinding and cyanide leach test work in 1988 on Jubilee ore with 95% recovery of gold for oxide ore.

Metcon laboratories completed further test work in 2011 on a sulphide sample from the Jubilee Plunger pit floor with only 60 to 70% gold dissolution. This indicates the need to oxidise or float the ore to enable processing of sulphide material, which is currently being investigated by Savannah as part of its potential Sulphide Circuit expansion at Georgetown.

Jubilee Plunger Exploration Target

An Exploration Target was stated for Jubilee Plunger on 23 June 2025 in ASX announcement titled "*Fourth Georgetown Project Exploration Target Jubilee Plunger*".

This Mineral Resource largely overlaps the area covered by the Exploration Target and hence the Exploration Target for Jubilee Plunger is no longer current.

The Company intends to review the remaining exploration potential for Jubilee Plunger and consider restating a new Exploration Target in due course.

Savannah Goldfields Mineral Resources Total

In combination with the previous Georgetown Mineral Resources announced 7 February 2022 the Georgetown tenement package Mineral Resource total is updated for Jubilee Plunger in Table 4.

Table 4: Georgetown Project Mineral Resources at a 1 g/t Au cut-off

Deposit	Classification	Tonnage	Gold Grade	Silver Grade	Density	Contained Gold *	Tenement
		kt	g/t	g/t	t/m ³	koz Au	
Red Dam #	Inferred	201	5.7	12	2.89	37	ML30203 EPM9158
Electric Light#	Inferred	388	3.7	0.7	2.59	46	ML3548 EPM8545
Jubilee Plunger	Indicated	98	2.4	15.9	2.47	8	ML3374
	Inferred	198	2.0	17.0	2.40	12	
	Total	296	2.1	16.6	2.42	20	
Big Reef#	Inferred	107	3.0	NA~	2.44	10	ML3278 ML3279 ML3280 EPM15547
Union#	Inferred	167	3.2	NA~	2.4	17	ML3366
Total Mineral Resource	Indicated	98	2.4			8	
	Inferred	1,061	3.6			123	
	Total	1,159	3.5			131	

* ounces and tonnes are rounded and reported to the nearest 1000 units

~ Ag assays for Big Reef and Union are limited and Ag cannot be estimated

Mineral Resource announced 7 Feb 2022

Savannah's corporate total Mineral Resource is also updated in Table 5 with the addition of Agate Creek Mineral Resource announced 13 August 2025.

Table 5: Savannah Total Mineral Resources at a 0.3 and 1.0 g/t Au cut-off

Project Mineral Resource	Cut-off	Classification	Tonnage	Gold Grade	Contained Gold
	Au g/t		Mt	Au g/t	Au koz
Agate Creek#	0.3	Measured	0.36	1.7	20
		Indicated	9.03	0.93	269
		Inferred	6.09	0.68	132
		Total	15.49	0.85	422
Georgetown (see Table 4)	1.0	Indicated	0.10	2.4	8
		Inferred	1.06	3.6	123
		Total	1.16	3.50	131
Savannah Total	0.3 or 1.0	Measured	0.36	1.7	20
		Indicated	9.13	0.95	277
		Inferred	7.15	1.11	255
		Total	16.65	1.03	553

Mineral Resource announced 13 Aug 2025

For personal use only

Competent Persons Statement

The information in this report that relates to Mineral Resources at Jubilee Plunger.

The information in this report that relates to Mineral Resources at Jubilee Plunger is based on information compiled by Mr John Horton who is a Chartered Fellow of the Australian Institute of Mining and Metallurgy and a Member of the Australian Institute of Geoscientists. Mr Horton is a full-time employee of ResEval Pty Ltd and has sufficient experience which is relevant to the style of mineralisation and type of deposit under consideration and to the activity which they are undertaking to qualify as a Competent Person as defined in the 2012 Edition of the 'Australasian Code for Reporting of Exploration Results, Mineral Resources and Ore Reserves.' Mr Horton consents to the inclusion in the report of the matters based on his information in the form and context in which it appears.

This information relating to Jubilee Plunger Mineral Resource was prepared under the JORC Code 2012 with additional details provided in the following JORC Table 1 assessment (see Appendix 1).

Previous Mineral Resource References

The information relating to the Mineral Resources at the Georgetown Project is extracted from the ASX Announcement titled:

'Georgetown Project Mineral Resources' and dated 7 February 2022.

The information relating to the Mineral Resources at the Agate Creek Project is extracted from the ASX Announcement titled:

'Agate Creek Mineral Resource update' and dated 13 August 2025.

Both reports are available to view on the Savannah website www.savannahgoldfields.com. Both reports were issued in accordance with the 2012 Edition of the JORC Australasian Code for Reporting of Exploration Results, Mineral Resources and Ore Reserves, and also "Australian Guidelines for the Estimation and Classification of Coal Resources, (2014)". The company confirms that it is not aware of any new information or data that materially affects the information included in the original market announcements and, in the case of estimates of Mineral Resources or Ore Reserves, that all material assumptions and technical parameters underpinning the estimates in the relevant market announcement continue to apply and have not materially changed. The company confirms that the form and context in which the Competent Person's findings are presented have not been materially modified from the original market announcement.

This Announcement is Authorised by the Board of Directors

For further information, please contact:

Brad Sampson or Stephen Bizzell (Chairman)

P (07) 3108 3500

E admin@savannahgoldfields.com

For personal use only

APPENDIX 1: Jubilee Plunger Gold Project JORC TABLE 1

CHECKLIST OF ASSESSMENT AND REPORTING CRITERIA (THE JORC CODE, 2012 EDITION)

JORC TABLE 1 provides a summary of assessment and reporting criteria used for the Jubilee Plunger Gold Project in accordance with the Table 1 Checklist in “*The Australasian Code for the Reporting of Exploration Results, Mineral Resources and Ore Reserves (The JORC Code, 2012 Edition)*”.

Ore Reserves and Mineral Resources Reporting Requirements

As an Australian company with securities listed on the Australian Securities Exchange (“ASX”), Savannah Resources Limited (Savannah) is subject to Australian disclosure requirements and standards, including the requirements of the Corporations Act and the ASX. Investors should note that it is a requirement of the ASX listing rules that the reporting of ore reserves and mineral resources in Australia comply with the 2012 Edition of the Australasian Code for Reporting of Exploration Results, Mineral Resources and Ore Reserves (the “JORC Code”) and that Savannah’s ore reserve and mineral resource estimates comply with the JORC Code.

Section 1 Sampling Techniques and Data

Criteria	JORC Code explanation	Commentary
Sampling techniques	<ul style="list-style-type: none"> Nature and quality of sampling (e.g. cut channels, random chips, or specific specialised industry standard measurement tools appropriate to the minerals under investigation, such as down hole gamma sondes, or handheld XRF instruments, etc). These examples should not be taken as limiting the broad meaning of sampling. 	<p>Soil sampling, surface rock chips may have been undertaken but this data is not compiled nor relied upon.</p> <p>DRAU in 2010 completed 8 trenches that were used for interpretation but not for used for estimation. Being at surface many of these are now mined out and have minimal impact. On the Jubilee Plunger resource.</p>
	<ul style="list-style-type: none"> Include reference to measures taken to ensure sample representivity and the appropriate calibration of any measurement tools or systems used. 	<p>The historical trench sampling is only vaguely described.</p>
	<ul style="list-style-type: none"> In cases where ‘industry standard’ work has been done this would be relatively simple (e.g. ‘reverse circulation drilling was used to obtain 1 m samples from which 3 kg was pulverised to produce a 30 g charge for fire assay’). 	<p>Sampling of trenches, percussion, RC and diamond core are by industry standard approaches with sampling generally on 1 m intervals.</p>
Drilling techniques	<ul style="list-style-type: none"> Drill type (e.g. core, reverse circulation, open-hole hammer, rotary air blast, auger, Bangka, sonic, etc) and details (e.g. core 	<p>BMR/GSQ (1977) government surveys completed two diamond drill holes were 4.5 cm diameter and were half core sampled</p>

Criteria	JORC Code explanation	Commentary
	<i>diameter, triple or standard tube, depth of diamond tails, face-sampling bit or other type, whether core is oriented and if so, by what method, etc).</i>	Howard Smith exploration (1980-1981) completed a large program of 272 percussion drill holes the initial small 1980 program used a Schramm rig and the main 1981 program used an Atlas Copco percussion rig. Sampling was on 1 m or at times 1.5 m intervals and samples via a cyclone and Jones riffle splitter reduced to 1 kg. Kidson Gold Mines (1989) completed a single RC hole to test depth extensions. DRAU (2011) completed a 24 holes program at Lady May using vertical holes completed by a Cardross Sandvik D1100 blast hole rig with a maximum depth of 28 m. Sampling was similar to RAB drilling. DRAU (2011) sampled many of the blast holes completed during mining over the mineralized area. The 5 m holes were sampled on two 2.5 fitch intervals.
Drill sample recovery	<ul style="list-style-type: none"> • <i>Method of recording and assessing core and chip sample recoveries and results assessed.</i> 	There are no references to drilling recovery for mostly percussion drilling.
	<ul style="list-style-type: none"> • <i>Measures taken to maximise sample recovery and ensure representative nature of the samples.</i> 	Open hole drilling with some potential for smearing was initially used but from the early 1990s' drilling progressed to RC drilling as drilling methods improved across the industry.
	<ul style="list-style-type: none"> • <i>Whether a relationship exists between sample recovery and grade and whether sample bias may have occurred</i> 	No obvious relationship, previous workers have indicated a relationship between recovery and grade other than that the mineralisation zone is softer and more challenging to drill. No digital recovery data is currently available to assess any potential relationship.
Logging	<ul style="list-style-type: none"> • <i>Whether core and chip samples have been geologically and geotechnically logged to a level of detail to support appropriate Mineral Resource estimation, mining studies and metallurgical studies. Whether logging is qualitative or quantitative in nature. Core (or costean, channel, etc) photography. The total length and percentage of the relevant intersections logged.</i> 	Logging for geology and alteration is available for the main 1981 drilling program but is yet to be recovered for the smaller subsequent programs.
Sub-sampling techniques and sample preparation	<ul style="list-style-type: none"> • <i>If core, whether cut or sawn and whether quarter, half or all core taken.</i> 	Jubilee Plunger BMR core was half core sampled.
	<ul style="list-style-type: none"> • <i>If non-core, whether riffled, tube sampled, rotary split, etc and whether sampled wet or dry.</i> 	DRAU (2009 –2012) subsampling at the drill rig with a riffle splitter to target 4-5 kg subsamples, though it is not clear if this extended to the blast hole sampling. The main Howard Smith 1980-1981 percussion drilling program was riffle split to 1 kg

Criteria	JORC Code explanation	Commentary
		Kidston Gold Mines RC drill hole in 1989 was sampled on 2 m intervals and rig split to 4-5 kg.
	<ul style="list-style-type: none"> For all sample types, the nature, quality and appropriateness of the sample preparation technique. 	<p>Sample preparation was by commercial laboratories that changed which each operating company.</p> <p>Though not described sample preparation is assumed to have used industry standard practises of the day.</p>
	<ul style="list-style-type: none"> Quality control procedures adopted for all sub-sampling stages to maximise representivity of samples. Measures taken to ensure that the sampling is representative of the in situ material collected, including for instance results for field duplicate/second-half sampling. 	<p>Riffle split of RC samples should have produced acceptable presentation of the splits.</p> <p>There are no records of spear percussion sampling.</p>
	<ul style="list-style-type: none"> Whether sample sizes are appropriate to the grain size of the material being sampled. 	Subsampling sizes are within industry practise and considered acceptable.
Quality of assay data and laboratory tests	<ul style="list-style-type: none"> The nature, quality and appropriateness of the assaying and laboratory procedures used and whether the technique is considered partial or total. 	<p>The method employed is industry standard and considered appropriate for the style of deposit and elements being assayed.</p> <p>DRAU (2009 to 2012) generally used ALS in Townsville but for Jubilee Plunger the mine production analysis was by Genalysis Laboratories in Townsville. Analysis was Fire Assay (FA25/AA) for Au and method AR01/OE for Ag, As, Cu, Fe, Pb, Zn. With element other than Ag only reported in suspected sulphides zones.</p> <p>Jubilee Plunger Howard Smith 1980-1981 assaying was completed at Pilbara Laboratories in Perth using 50 g fire assay with check samples including:</p> <ul style="list-style-type: none"> 37 check samples sent to ALS in Brisbane in 1980 using a 30 g fire assay. 485 ore grade reassays at Analabs in Perth using a 50 g fire assay <p>Generally the check reassays were higher in grade but with some variation.</p> <p>Kidston Gold Mines samples were assayed at Analabs in Townsville by 50 g fire assay for Au (method GG313) and by ICP for Cu, Pb, Zn, As, Mo, Bi, Sb and S (method GI107).</p>
	<ul style="list-style-type: none"> For geophysical tools, spectrometers, handheld XRF instruments, etc, the parameters used in determining the analysis including instrument make and model, reading times, calibrations factors applied and their derivation, etc. 	Not Applicable as no geophysical or handheld tools were used

For personal use only



Criteria	JORC Code explanation	Commentary
	<ul style="list-style-type: none"> <i>Nature of quality control procedures adopted (e.g. standards, blanks, duplicates, external laboratory checks) and whether acceptable levels of accuracy (i.e. lack of bias) and precision have been established</i> 	QAQC is only available for the main drilling program by Howard Smith, with check assays that suggested the original assays were low but within a high variance.
Verification of sampling and assaying	<ul style="list-style-type: none"> <i>The verification of significant intersections by either independent or alternative company personnel.</i> 	Mining of the oxide by DRAU (Aug to Oct 2011) resulted in roughly similar grades and tonnes as modelled. This provides a range of verification and confidence in the available drilling data.
	<ul style="list-style-type: none"> <i>The use of twinned holes.</i> 	Twinned drilling is not available but there is overlap of the 1980s resource drilling with blast hole sampling (2011) that visually appears conformable.
	<ul style="list-style-type: none"> <i>Documentation of primary data, data entry procedures, data verification, data storage (physical and electronic) protocols.</i> 	The database supplied has some data source information allowing data set to be identified and reviewed separately. Otherwise, the data collation does not have previous review of data integrity aspects, nor original source information to cross validate the data compilation.
	<ul style="list-style-type: none"> <i>Discuss any adjustment to assay data.</i> 	No adjustment of assay data was considered necessary.
Location of data points	<ul style="list-style-type: none"> <i>Accuracy and quality of surveys used to locate drill holes (collar and down-hole surveys), trenches, mine workings and other locations used in Mineral Resource estimation.</i> 	<p>DRAU drilling was surveyed by Ausnorth Consultants along with pre and post mining pit surveys. Blast holes and 2011 drilling were surveyed with reference to mine survey control points.</p> <p>Surface topography for all deposits with mining were surveyed by Ausnorth Consultants pre and post mining surveys are supplemented with Lidar completed by Savannah in 2002 that covers the whole mining lease.</p> <p>At Jubilee Plunger most holes are 60° intersecting the moderately dipping mineralisation almost perpendicular. Some deeper drilling was vertical to near vertical as was the drilling in 2011. There is no description of down hole surveys for all drilling phases.</p>
	<ul style="list-style-type: none"> <i>Specification of the grid system used.</i> 	All data has been converted to MGA 94 (Zone 54). Elevation values are in AHD RL.
	<ul style="list-style-type: none"> <i>Quality and adequacy of topographic control.</i> 	<p>Pre and post mining surveys are available for the Jubilee Plunger area and are of high quality.</p> <p>Savannah supplemented this with Lidar captured for the entire mining lease in 2022. This had Trimble GPS tie in points and required a 3 m elevation correction to correlate well with the pit and collar survey locations. The mine survey was used to supplement the flooded pit areas of the for mining depletion.</p>
Data spacing	<ul style="list-style-type: none"> <i>Data spacing for reporting of Exploration Results.</i> 	The main areas of Jubilee Plunger and Lady Mary are drill defined on a 25 m by 8 m spacing one small area drilled on 5 m centres.



Criteria	JORC Code explanation	Commentary
and distribution		Some sections lines are 50 to 100 m spacing. The widest spacing also have relatively short drilling and create breaks in the interpretation but where continuity of the mineralisation may still be present but is untested.
	<ul style="list-style-type: none"> Whether the data spacing and distribution is sufficient to establish the degree of geological and grade continuity appropriate for the Mineral Resource and Ore Reserve estimation procedure(s) and classifications applied. 	<p>Drill hole spacing alone would support a higher classification but the data remains historic. Areas that might support a higher classification based on drilling spacing include:</p> <ul style="list-style-type: none"> At Lady May drilled arses of 25 by 8 m classified as Inferred due to the use of RAB sampling. 5 m drilled area south of Jubilee Plunger had variable results and classified as Indicated. One unmined bench with blast hole sampling available classified as Indicated as the pit is flooded and no partial mining of the bench cannot be confirmed at this stage.
	<ul style="list-style-type: none"> Whether sample compositing has been applied. 	For estimation samples are composited to 1 m regular intervals. This matches the majority of the original sample lengths.
Orientation of data in relation to geological structure	<ul style="list-style-type: none"> Whether the orientation of sampling achieves unbiased sampling of possible structures and the extent to which this is known, considering the deposit type. 	At Jubilee Plunger most drilling is at 60° drilled perpendicular to the structure which is moderately dipping. Some vertical drilling into deeper parts and at Lady Mary still provide a reliable angle of intersection.
	<ul style="list-style-type: none"> If the relationship between the drilling orientation and the orientation of key mineralised structures is considered to have introduced a sampling bias, this should be assessed and reported if material. 	Drilling orientations are considered appropriate to the mineralisation type with no bias observed as a result of the drill orientation.
Sample security	<ul style="list-style-type: none"> The measures taken to ensure sample security. 	The chain of custody by the three previous exploration companies that completed drilling is not documented and largely completed where sample security was not an industry consideration.
Audits or reviews	<ul style="list-style-type: none"> The results of any audits or reviews of sampling techniques and data. 	In 2008 L Davis of Veronica Webster Pty Ltd prepared a due diligence report for DRAU for Georgetown projects including the Red Dam, Electric Light deposits and resources. But there are no specific audit of the Jubilee Plunger deposit.

Section 2 Reporting of Exploration Results

Criteria	JORC Code explanation	Commentary
Mineral tenement and land	<ul style="list-style-type: none"> Type, reference name/number, location and ownership including agreements or material issues with third parties such as joint 	Jubilee Plunger and Lady Mary mineralisation is entirely within the Mining Lease ML3374 Robin Hood.



Criteria	JORC Code explanation	Commentary
tenure status	<i>ventures, partnerships, overriding royalties, native title interests, historical sites, wilderness or national park and environmental settings.</i>	<p>ML3374 details from GeoResGlobe as at 15 June 2025 were:</p> <ul style="list-style-type: none"> • 128 Ha • Granted 22/01/1987 • Expires 31/01/2028 • Holder Kempton Minerals Pty Ltd <p>Kempton Minerals Pty Ltd is 100% owned by Savannah Goldfields Limited. Savannah is also the Corporate Operator of the title.</p>
	<ul style="list-style-type: none"> • <i>The security of the tenure held at the time of reporting along with any known impediments to obtaining a licence to operate in the area.</i> 	<p>The tenements are overlapped by the Ewamian People #3 (QUD6018/2001) native title determination. Negotiations with Ewamian People who are the determined Native Title claimant are well underway and are not expected to impact future development and production.</p> <p>Landholder Agreements are still being fully reviewed but it is unlikely that these would significantly impact future production plans</p>
Exploration done by other parties	<ul style="list-style-type: none"> • <i>Acknowledgment and appraisal of exploration by other parties</i> 	<p>Historic mining to 1901 returned</p> <ul style="list-style-type: none"> • Jubilee Plunger 995 t at 10.7 g/t Au • Lady Mary 669 t at 23.4 g/t Au • Better Luck 737 t at 27.9 g/t Au <p>Gulf Minerals Pty Ltd (1970) mapped and costean the area with poor results</p> <p>BMR/QGS (1973-5) completed mapping and geophysical surveys to target 2 diamond drill holes which intersected sulphides</p> <p>Howard Smith Exploration (HSE) 1980s' completed 200 open percussion holes</p> <p>Kidston Gold Mines completed a one drill hole</p>
Geology	<ul style="list-style-type: none"> • <i>Deposit type, geological setting and style of mineralisation.</i> 	<p>The deposit is located within the northern part of the Georgetown inlier, which is made up of crystalline basement or early to middle Proterozoic rocks. The deposits occur within the Etheridge Goldfield and comprise small mesothermal veins and lenses of gold and sulphide typical of Siluro-Devonian age.</p> <p>Jubilee Plunger is a 1200m long shear zone of sericitised and quartz-veined Robin Hood Granodiorite between Oaky Creek and the north-western margin of the Robin Hood pluton. There is one main structure and some other hanging wall and extension veins. Vining is more discontinuous and lower grade with veins dipping at a shallower 40°.</p>



Criteria	JORC Code explanation	Commentary
Drill hole Information	<ul style="list-style-type: none"> A summary of all information material to the understanding of the exploration results including a tabulation of the following information for all Material drill holes: <ul style="list-style-type: none"> easting and northing of the drill hole collar elevation or RL (Reduced Level – elevation above sea level in metres) of the drill hole collar dip and azimuth of the hole down hole length and interception depth hole length. 	<p>No exploration results are reported in this Mineral Resource statement.</p> <p>Location of the drilling data in relation to the resource is summarised in plan view in Figure 4 and Appendix 2</p>
	<ul style="list-style-type: none"> If the exclusion of this information is justified on the basis that the information is not Material and this exclusion does not detract from the understanding of the report, the Competent Person should clearly explain why this is the case. 	<p>Channel samples are used but occur largely at the top of mined out oxide areas and have minimal input to the Resource estimate.</p> <p>Blast holes from previous mining are not used for the estimate. Most are now mined out and depleted. They also provide a lower quality RAB sample with greater dilution due to the 2.5 m sample size.</p>
Data aggregation methods	<ul style="list-style-type: none"> In reporting Exploration Results, weighting averaging techniques, maximum and/or minimum grade truncations (e.g. cutting of high grades) and cut-off grades are usually Material and should be stated. Where aggregate intercepts incorporate short lengths of high grade results and longer lengths of low grade results, the procedure used for such aggregation should be stated and some typical examples of such aggregations should be shown in detail. The assumptions used for any reporting of metal equivalent values should be clearly stated. 	<p>No exploration results are reported in this Mineral Resource statement.</p> <p>Weighting, compositing and cutting are addressed elsewhere for the Mineral Resource</p>
Relationship between mineralisation widths and intercept lengths	<ul style="list-style-type: none"> These relationships are particularly important in the reporting of Exploration Results. If the geometry of the mineralisation with respect to the drill hole angle is known, its nature should be reported. 	<p>The mineralisation is generally near vertical and thin. Drill is generally undertaken perpendicular to the view strike. The majority of the drilling is angled vertical or at 60° and is at an optimal intersection angle. The few vertical holes also provide a reasonable intersection angle due to the moderate dip of the mineralisation.</p>
	<ul style="list-style-type: none"> If it is not known and only the down hole lengths are reported, there should be a clear statement to this effect (e.g. 'down hole length, true width not known'). 	<p>Not applicable as downhole lengths are not reported, however it is intersection angles would approach true width.</p>



Criteria	JORC Code explanation	Commentary
Diagrams	<ul style="list-style-type: none"> Appropriate maps and sections (with scales) and tabulations of intercepts should be included for any significant discovery being reported. These should include, but not be limited to a plan view of drill hole collar locations and appropriate sectional views. 	Plans and sections are provided in the announcement, see Figure 4, 5, and 6.
Balanced reporting	<ul style="list-style-type: none"> Where comprehensive reporting of all Exploration Results is not practicable, representative reporting of both low and high grades and/or widths should be practiced to avoid misleading reporting of Exploration Results. 	Exploration results are not reported but are summarised in the resource calculation and demonstrated in the sections and plans provided.
Other substantive exploration data	<ul style="list-style-type: none"> Other exploration data, if meaningful and material, should be reported including (but not limited to): geological observations; geophysical survey results; geochemical survey results; bulk samples – size and method of treatment; metallurgical test results; bulk density, groundwater, geotechnical and rock characteristics; potential deleterious or contaminating substances. 	<p>The resources are within existing mining leases with related environmental, rehabilitation, water and operational reports.</p> <p>The existing Jubilee Plunger pit exposes sulphide mineralisation that will only suit the Georgetown processing plant when a flotation circuit is added.</p>
Further work	<ul style="list-style-type: none"> The nature and scale of planned further work (e.g. tests for lateral extensions or depth extensions or large-scale step-out drilling). 	Data validation, resampling and verification sampling and resource extension or infill sampling are being considered. These will be staged and prioritised for the array of deposits within the Georgetown project. Depending on project priority each project will be assessed and sampled to allow resource updates and upgrades.
	<ul style="list-style-type: none"> Diagrams clearly highlighting the areas of possible extensions, including the main geological interpretations and future drilling areas, provided this information is not commercially sensitive. 	Drilling is not yet planned as the initial focus is on data collation, review, verification sampling and resource updates and upgrades.

Section 3 Estimation and Reporting of Mineral Resources

Criteria	JORC Code explanation	Commentary
Database integrity	<ul style="list-style-type: none"> Measures taken to ensure that data has not been corrupted by, for example, transcription or keying errors, between its initial collection and its use for Mineral Resource estimation purposes. Data validation procedures 	<p>Savannah was supplied with a digital database. This was supplemented with additional files where needed. For Jubilee Plunger grade control data was available as fitch points and these were converted back to blast hole drill intervals.</p> <p>Cross data validation was undertaken to correct critical errors where other source data was available.</p>

For personal use only



Criteria	JORC Code explanation	Commentary
	<i>used.</i>	The drilling locations were compared to previous workers wireframe interpretations to confirm similarity of locations.
Site visits	<ul style="list-style-type: none"> • <i>Comment on any site visits undertaken by the Competent Person and the outcome of those visits.</i> • <i>If no site visits have been undertaken indicate why this is the case.</i> 	John Horton visited the site on 12 August 2022. No subsequent sampling or earthwork are understood to have been undertaken since.
Geological interpretation	<ul style="list-style-type: none"> • <i>Confidence in (or conversely, the uncertainty of) the geological interpretation of the mineral deposit.</i> • <i>Nature of the data used and of any assumptions made.</i> • <i>The effect, if any, of alternative interpretations on Mineral Resource estimation.</i> • <i>The use of geology in guiding and controlling Mineral Resource estimation.</i> • <i>The factors affecting continuity both of grade and geology.</i> 	<p>Wireframing of each deposit followed previous work, updated for all available drilling and updated survey locations and extended to encompass all available drilling at ML3374.</p> <p>The interpretation is consistent with thin mesothermal structural veins with consistency in the vein location between drill holes, channel samples and drill programs.</p> <p>The association of gold with sulphide simplifies the ore recognition in mining and in drilling and allows for visual control during mining. Visual control allowed DRAU to maintain a high head grade during oxide mining by minimising dilution from the thin target ore zones.</p>
Dimensions	<ul style="list-style-type: none"> • <i>The extent and variability of the Mineral Resource expressed as length (along strike or otherwise), plan width, and depth below surface to the upper and lower limits of the Mineral Resource.</i> 	Jubilee Plunger is a 1200 m long shear zone of sericitised and quartz-veined Robin Hood Granodiorite between Oaky Creek and the north-western margin of the Robin Hood pluton. There is one main structure and some other hanging wall and extensional veins. The mineralised sections is modelled with a shallow dip 35° and strike length of 160 m and a down dip width of 100 m (~50 m below surface). True widths are typically 2 to 6 m
Estimation and modelling techniques	<ul style="list-style-type: none"> • <i>The nature and appropriateness of the estimation technique(s) applied and key assumptions, including treatment of extreme grade values, domaining, interpolation parameters and maximum distance of extrapolation from data points. If a computer assisted estimation method was chosen include a description of computer software and parameters used.</i> 	<p>Mineralisation domains comprise one largely continuous domain, one intermittent hanging wall domain and a NE domain as with a separate structure or a possible fault offset of the main zone.</p> <p>Blocks of mineralisation had parent blocks of 5 by 5 by 2.5 m, sub-block size down to 2.5 by 2.5 by 1.25 m.</p> <p>Estimation was kept simple using an inverse distance squared estimation method with a to 4 flattening anisotropy dipping at 30 towards 055. A search radii of 80 by 80 by 20 m was used to estimate Au and Ag but extrapolation is limited to 35 m by classification. A maximum of 20 composites and 4 per drill holes were used to ensure all neighbouring drilling was selected.</p>
	<ul style="list-style-type: none"> • <i>Any assumptions behind modelling of selective mining units</i> 	Selective mining units are not considered directly but the 2.5 m vertical parent block size reflects the likely bench height for mining.
	<ul style="list-style-type: none"> • <i>In the case of block model interpolation, the block size in relation to the average sample spacing and the search</i> 	Block modelling was maintained at a small block size to preserve the thin nature of the mineralisation. 1 m composites are reasonable for the estimation of the 2.5 m



Criteria	JORC Code explanation	Commentary
	<i>employed.</i>	height blocks with sufficient samples (4) selected from each drill hole to adequately inform each parent block.
	<ul style="list-style-type: none"> <i>Description of how the geological interpretation was used to control the resource estimates.</i> 	Estimation was restricted to domain wireframes for continuous mineralisation >0.3 to 0.5 g/t Au. This was the primary geological control with flattening anisotropy used for estimation with the domain.
	<ul style="list-style-type: none"> <i>Any assumptions about correlation between variables.</i> <i>The assumptions made regarding recovery of by-products.</i> <i>Estimation of deleterious elements or other non-grade variables of economic significance (e.g. sulphur for acid mine drainage characterisation).</i> 	Gold and silver occur with sulphides. This creates a distinctive and visual brown colour in oxide when previously mined. Sulphide mineralisation will require a different processing method with more challenging recovery and environmental aspects than the previous oxide processing.
	<ul style="list-style-type: none"> <i>Discussion of basis for using or not using grade cutting or capping.</i> 	<p>Composite grades were cut based on population statistics and in-line with usual industry practise to avoid the proportional effect for nuggety occurrence for precious metals.</p> <p>High grade cuts included</p> <ul style="list-style-type: none"> Domain 1 12 g/t Au, 80 g/t Ag Domain 2 & 3 8 g/t Au, 30 g/t Ag for low grade domains
	<ul style="list-style-type: none"> <i>The process of validation, the checking process used, the comparison of model data to drill hole data, and use of reconciliation data if available.</i> 	Reconciling the block models to milled production for oxide indicate the resource estimates are within 7% of the metal value with the result consistent with likely mining ore loss and dilution
	<ul style="list-style-type: none"> <i>The availability of check estimates, previous estimates and/or mine production records and whether the Mineral Resource estimate takes appropriate account of such data.</i> 	Estimates for all mined deposits appear to have adequately predicted the mined oxide material processed in 2011.
Moisture	<ul style="list-style-type: none"> <i>Whether the tonnages are estimated on a dry basis or with natural moisture, and the method of determination of the moisture content.</i> 	All material is reported on a dry basis.
Cut-off parameters	<ul style="list-style-type: none"> <i>The basis of the adopted cut-off grade(s) or quality parameters applied.</i> 	<p>Interpretations follow the mineralised zones and approximate a 0.5 g/t Au cut-off drawing reports at a higher 1 g/t cut-off from block estimates.</p> <p>Previous mining indicated greater selectivity and used higher cut-off grades of around 2 g/t Au for mining.</p>
Mining factors or assumptions	<ul style="list-style-type: none"> <i>Assumptions made regarding possible mining methods, minimum mining dimensions and internal (or, if applicable,</i> 	Jubilee Plunger is lower grade than other Georgetown deposits and has shorter more erratic continuity. The



Criteria	JORC Code explanation	Commentary
	<p><i>external) mining dilution. It is always necessary as part of the process of determining reasonable prospects for eventual economic extraction to consider potential mining methods, but the assumptions made regarding mining methods and parameters when estimating Mineral Resources may not always be rigorous. Where this is the case, this should be reported with an explanation of the basis of the mining assumptions made.</i></p>	<p>shallower moderate dip presents a more problematic mining face in an open pit albeit at lower strip ratios.</p>
Metallurgical factors or assumptions	<ul style="list-style-type: none"> <i>The basis for assumptions or predictions regarding metallurgical amenability. It is always necessary as part of the process of determining reasonable prospects for eventual economic extraction to consider potential metallurgical methods, but the assumptions regarding metallurgical treatment processes and parameters made when reporting Mineral Resources may not always be rigorous. Where this is the case, this should be reported with an explanation of the basis of the metallurgical assumptions made.</i> 	<p>Normet Pty Ltd completed grinding and cyanide leach test work in 1988 on Jubilee ore with 95% recovery of gold for oxide ore.</p> <p>Metcon laboratories completed further test work in 2011 on a sulphide sample from the Jubilee Plunger pit floor with only 60 to 70% gold dissolution. This indicates the need to oxidise or float the ore to enable processing of sulphide material.</p> <p>The Georgetown plant operations from 2009 to 2013 treated oxide ore from several deposits, including Jubilee Plunger and successfully achieved recoveries >80% Au.</p> <p>Mining at Jubilee Plunger ceased early when sulphides were encountered in blasted material.</p>
Environmental factors or assumptions	<ul style="list-style-type: none"> <i>Assumptions made regarding possible waste and process residue disposal options. It is always necessary as part of the process of determining reasonable prospects for eventual economic extraction to consider the potential environmental impacts of the mining and processing operation. While at this stage the determination of potential environmental impacts, particularly for a greenfields project, may not always be well advanced, the status of early consideration of these potential environmental impacts should be reported.</i> 	<p>Processing of sulphide ore will require a change in processing technology and management of sulphide in both tailings and waste rock dumps. Which are still being reviewed.</p>
Bulk density	<ul style="list-style-type: none"> <i>Whether assumed or determined. If assumed, the basis for the assumptions. If determined, the method used, whether wet or dry, the frequency of the measurements,</i> 	<p>Bulk Density data is not available locally with project data limited to a single program at Red Dam with little available description of the method.</p>



Criteria	JORC Code explanation	Commentary
	<p><i>the nature, size and representativeness of the samples.</i></p> <ul style="list-style-type: none"> <i>The bulk density for bulk material must have been measured by methods that adequately account for void spaces (vugs, porosity, etc), moisture and differences between rock and alteration zones within the deposit.</i> <i>Discuss assumptions for bulk density estimates used in the evaluation process of the different materials.</i> 	<p>Density for Jubilee Plunger was previously assumed to be consistent with other regional projects and used 2.4 and 2.6 t/m³ for oxide and sulphide materials. After reassessing the Jubilee Plunger reconciliation results these assumptions were reduced to 2.2 and 2.5 t/m³ for oxide and sulphide materials, respectively.</p>
Classification	<ul style="list-style-type: none"> <i>The basis for the classification of the Mineral Resources into varying confidence categories.</i> <i>Whether appropriate account has been taken of all relevant factors (i.e. relative confidence in tonnage/grade estimations, reliability of input data, confidence in continuity of geology and metal values, quality, quantity and distribution of the data).</i> <i>Whether the result appropriately reflects the Competent Person's view of the deposit.</i> 	<p>The previous classification in 2021 was Inferred based on an initial review of the Georgetown projects and reflects the in early stage of assessment and data collation by Savannah.</p> <p>Although there is no additional data the classification has been reviewed and updated to reflect the level of assessment at Jubilee Plunger to include:</p> <ul style="list-style-type: none"> Inferred where interpreted as a domain and within 35 m of a drill holes or Indicated if drilled to 25 by 8 m spacing at the Jubilee Plunger pit area.
Audits or reviews	<ul style="list-style-type: none"> <i>The results of any audits or reviews of Mineral Resource estimates.</i> 	<p>The current estimate has not been independently reviewed or audited.</p>
Discussion of relative accuracy/confidence	<ul style="list-style-type: none"> <i>Where appropriate a statement of the relative accuracy and confidence level in the Mineral Resource estimate using an approach or procedure deemed appropriate by the Competent Person. For example, the application of statistical or geostatistical procedures to quantify the relative accuracy of the resource within stated confidence limits, or, if such an approach is not deemed appropriate, a qualitative discussion of the factors that could affect the relative accuracy and confidence of the estimate.</i> <i>The statement should specify whether it relates to global or local estimates, and, if local, state the relevant tonnages, which should be relevant to technical and economic</i> 	<p>The current estimates are simple and commensurate with the small scale of the deposit classification and the relatively simple structural controls on the mineralisation.</p> <p>The estimates are completed at a lower cut-off to ensure continuity of interpretation. This captures the potential edge dilution that will be present with open pit mining of a moderately dipping mineralisation structure.</p> <p>The model may not be suitable for drawing higher grade cut-offs as the deposit becomes less continuous and predictable.</p> <p>Mined material was also estimated and provides a reasonable reconciliation with the as mined and processed oxide ore. This suggests that the current model should provide a reasonable prediction of gold ounces with further work needed to improve selectivity of the resource predicted. This will be tempered against the likely mining</p>

Criteria	JORC Code explanation	Commentary
	<p><i>evaluation. Documentation should include assumptions made and the procedures used.</i></p> <ul style="list-style-type: none"> <i>These statements of relative accuracy and confidence of the estimate should be compared with production data, where available.</i> 	<p>scenarios Savannah will consider for sulphide ore processing.</p>

For personal use only

APPENDIX 2: ML3374 Resource Drilling Summary

Company	Year	Drill Type	Hole Name	MGA East	MGA North	RL	Total Depth	Au assays	Azimuth	Dip
BMR	1977	DDH	DDH-1	784385.0	7913828.1	470.3	102.0	32	237	-45
BMR	1977	DDH	DDH-2	784045.4	7914382.6	474.7	56.6	47	6	-90
HSE	1981	PERC	JP04-1	784047.2	7914268.5	474.5	40.0	40	237	-60
HSE	1981	PERC	JP04-2	784060.3	7914275.8	474.1	40.0	40	237	-60
HSE	1981	PERC	JP04-3	784072.9	7914283.4	473.6	40.0	40	237	-60
HSE	1981	PERC	JP04-4	784086.3	7914290.7	472.8	40.0	40	237	-60
HSE	1981	PERC	JP04-5	784007.7	7914245.9	474.0	40.0	40	237	-60
HSE	1981	PERC	JP04-6	784020.8	7914253.8	474.3	40.0	40	237	-60
HSE	1981	PERC	JP04-7	784034.0	7914261.2	474.6	40.0	40	237	-60
HSE	1981	PERC	JP05-1	783967.6	7914338.8	479.7	23.0	23	57	-60
HSE	1981	PERC	JP06-1	783943.0	7914381.1	483.4	40.0	40	57	-60
HSE	1981	PERC	JP07-1	783974.9	7914653.6	471.5	40.0	39	237	-60
HSE	1981	PERC	JP07-2	783989.0	7914649.0	471.5	40.0	40	237	-60
HSE	1981	PERC	JP07-3	784004.3	7914646.2	471.2	41.0	38	237	-60
HSE	1981	PERC	JP07-4	784018.5	7914641.6	470.6	40.0	40	237	-60
HSE	1981	PERC	JP08-1	784057.1	7914680.6	468.8	41.0	9	282	-55
HSE	1981	PERC	JP08-2	784043.9	7914685.8	469.5	35.0	6	282	-55
HSE	1981	PERC	JP09-1	783994.0	7914598.6	472.2	19.0	3	282	-55
HSE	1981	PERC	JP09-2	784010.7	7914595.5	471.6	29.0	6	282	-55
HSE	1981	PERC	RH01-1	784067.7	7914293.0	474.1	38.0	37	240	-50
HSE	1981	PERC	RH01-2	784064.0	7914289.5	474.1	30.0	29	236	-50
HSE	1981	PERC	RH01-3	784059.1	7914287.8	474.5	30.0	29	240	-50
HSE	1981	PERC	RH01-4	784055.3	7914284.5	474.4	26.0	24	240	-50
HSE	1981	PERC	RH01-5	784051.0	7914282.1	474.7	20.0	19	240	-50
HSE	1981	PERC	RH01-6	784046.6	7914279.6	474.7	20.0	19	240	-50
HSE	1981	PERC	RH01-7	784042.3	7914277.2	474.9	15.0	14	240	-50
HSE	1981	PERC	RH02-1	784070.8	7914287.6	473.7	35.0	34	240	-50
HSE	1981	PERC	RH02-2	784065.9	7914286.2	474.1	30.0	29	240	-50
HSE	1981	PERC	RH02-3	784061.5	7914283.4	474.1	30.0	29	240	-50
HSE	1981	PERC	RH02-4	784057.8	7914280.2	474.4	27.0	26	240	-50
HSE	1981	PERC	RH02-5	784053.4	7914277.7	474.6	20.0	19	240	-50
HSE	1981	PERC	RH02-6	784049.1	7914275.2	474.6	20.0	19	240	-50
HSE	1981	PERC	RH02-7	784044.7	7914272.8	474.9	15.0	14	240	-50
HSE	1981	PERC	RH03-1	784068.7	7914280.9	474.1	30.0	29	240	-60
HSE	1981	PERC	RH03-2	784064.6	7914278.3	474.1	30.0	29	240	-60
HSE	1981	PERC	RH03-3	784055.9	7914273.3	474.3	20.0	19	240	-60
HSE	1981	PERC	RH03-4	784051.5	7914271.0	474.6	20.0	19	240	-60
HSE	1981	PERC	RH03-5	784096.1	7914295.9	472.1	41.0	6	237	-52
HSE	1981	PERC	RH04-1	784075.7	7914278.9	473.8	35.0	34	240	-50
HSE	1981	PERC	RH04-2	784071.4	7914276.4	473.8	30.0	29	240	-50
HSE	1981	PERC	RH04-3	784067.1	7914273.9	474.1	30.0	29	240	-50
HSE	1981	PERC	RH04-4	784062.7	7914271.5	474.1	25.0	24	240	-50
HSE	1981	PERC	RH04-5	784058.4	7914269.1	474.3	20.0	19	240	-50
HSE	1981	PERC	RH04-6	784054.0	7914266.6	474.3	20.0	19	240	-50
HSE	1981	PERC	RH04-7	784049.6	7914264.1	474.5	15.0	14	233	-50
HSE	1981	PERC	RH05-1	784077.7	7914275.4	473.4	35.0	34	240	-50
HSE	1981	PERC	RH05-2	784073.8	7914272.1	473.8	30.0	29	240	-50
HSE	1981	PERC	RH05-3	784069.6	7914269.6	473.8	32.0	31	240	-50
HSE	1981	PERC	RH05-4	784065.2	7914267.1	474.1	25.0	24	240	-50
HSE	1981	PERC	RH05-5	784060.8	7914264.7	474.3	20.0	19	240	-50
HSE	1981	PERC	RH05-6	784056.5	7914262.3	474.3	20.0	19	240	-50
HSE	1981	PERC	RH05-7	784052.1	7914259.8	474.5	15.0	14	240	-50
HSE	1981	PERC	RH06-1	783947.3	7914556.4	475.2	20.0	19	241	-50
HSE	1981	PERC	RH06-10	783869.0	7914512.0	479.0	20.0	13	240	-60

For personal use only

Company	Year	Drill Type	Hole Name	MGA East	MGA North	RL	Total Depth	Au assays	Azimuth	Dip
HSE	1981	PERC	RH06-11	783929.9	7914546.5	475.6	48.0	6	238	-60
HSE	1981	PERC	RH06-2	783938.5	7914551.5	475.5	20.0	19	241	-50
HSE	1981	PERC	RH06-3	783929.8	7914546.5	476.3	44.0	19	241	-50
HSE	1981	PERC	RH06-4	783921.2	7914541.6	477.1	21.5	14	241	-50
HSE	1981	PERC	RH06-5	783912.5	7914536.7	477.9	23.0	15	241	-50
HSE	1981	PERC	RH06-6	783903.7	7914531.8	478.6	20.0	13	241	-50
HSE	1981	PERC	RH06-7	783895.1	7914526.8	479.4	20.0	13	241	-50
HSE	1981	PERC	RH06-8	783886.4	7914521.9	480.0	30.0	13	241	-50
HSE	1981	PERC	RH06-9	783877.7	7914517.0	479.5	20.0	13	241	-50
HSE	1981	PERC	RH07-1	783939.8	7914528.2	478.6	20.0	13	240	-50
HSE	1981	PERC	RH07-2	783931.1	7914523.5	479.2	30.0	13	240	-50
HSE	1981	PERC	RH07-3	783922.4	7914518.7	480.5	20.0	13	240	-50
HSE	1981	PERC	RH07-4	783913.8	7914513.7	482.0	20.0	13	241	-50
HSE	1981	PERC	RH07-5	783905.5	7914508.7	483.0	20.0	13	240	-50
HSE	1981	PERC	RH07-6	783896.6	7914504.0	483.5	20.0	13	240	-50
HSE	1981	PERC	RH07-7	783887.8	7914498.9	483.5	20.0	13	240	-50
HSE	1981	PERC	RH07-8	783878.9	7914494.0	483.6	20.0	13	240	-50
HSE	1981	PERC	RH07-9	783944.8	7914527.4	477.3	48.0	11	239	-60
HSE	1981	PERC	RH08-1	783971.1	7914512.2	477.5	21.5	14	240	-50
HSE	1981	PERC	RH08-10	783893.5	7914468.4	489.8	20.0	13	240	-50
HSE	1981	PERC	RH08-11	783884.9	7914463.6	489.3	20.0	13	240	-50
HSE	1981	PERC	RH08-12	783949.4	7914504.1	479.5	59.0	7	236	-53
HSE	1981	PERC	RH08-2	783962.4	7914507.4	478.1	21.5	14	240	-50
HSE	1981	PERC	RH08-3	783954.4	7914503.0	479.0	21.5	14	240	-50
HSE	1981	PERC	RH08-4	783945.2	7914498.0	480.0	23.0	15	240	-50
HSE	1981	PERC	RH08-5	783936.3	7914493.0	481.9	20.0	13	240	-50
HSE	1981	PERC	RH08-6	783927.9	7914488.0	483.9	20.0	13	240	-50
HSE	1981	PERC	RH08-7	783919.3	7914483.2	485.3	20.0	13	240	-50
HSE	1981	PERC	RH08-8	783911.0	7914478.4	488.4	24.5	16	240	-50
HSE	1981	PERC	RH08-9	783902.0	7914473.4	489.4	20.0	13	240	-50
HSE	1981	PERC	RH09-1	783966.4	7914481.3	481.3	39.5	26	249	-50
HSE	1981	PERC	RH09-2	783957.8	7914476.1	479.5	20.0	13	237	-50
HSE	1981	PERC	RH09-3	783949.6	7914471.4	481.2	21.5	14	240	-50
HSE	1981	PERC	RH09-4	783941.4	7914466.6	484.6	20.0	13	240	-50
HSE	1981	PERC	RH09-5	783933.1	7914461.5	486.0	20.0	13	240	-50
HSE	1981	PERC	RH09-6	783924.3	7914456.5	488.3	20.0	13	240	-50
HSE	1981	PERC	RH09-7	783916.1	7914451.5	490.5	20.0	13	240	-50
HSE	1981	PERC	RH09-8	783907.8	7914446.5	492.5	20.0	13	240	-50
HSE	1981	PERC	RH09-9	783975.5	7914486.2	478.0	24.5	16	240	-50
HSE	1981	PERC	RH10-1	783996.5	7914469.4	476.0	48.5	31	240	-50
HSE	1981	PERC	RH10-10	783919.3	7914425.7	490.4	20.0	13	240	-50
HSE	1981	PERC	RH10-11	784004.9	7914474.5	475.4	34.0	13	240	-50
HSE	1981	PERC	RH10-12	784000.5	7914471.9	476.0	49.0	30	240	-50
HSE	1981	PERC	RH10-13	783980.5	7914459.4	478.9	41.0	7	239	-55
HSE	1981	PERC	RH10-2	783987.8	7914464.6	477.4	23.0	15	240	-50
HSE	1981	PERC	RH10-3	783979.7	7914459.4	478.2	21.5	14	240	-50
HSE	1981	PERC	RH10-4	783970.4	7914454.6	480.4	21.5	14	240	-50
HSE	1981	PERC	RH10-5	783961.9	7914450.0	482.0	36.5	23	240	-50
HSE	1981	PERC	RH10-6	783953.4	7914445.0	483.2	30.5	20	240	-50
HSE	1981	PERC	RH10-7	783945.0	7914440.2	485.0	20.0	13	240	-50
HSE	1981	PERC	RH10-8	783936.3	7914435.2	486.7	20.0	13	240	-50
HSE	1981	PERC	RH10-9	783927.7	7914430.6	488.0	20.0	13	240	-50
HSE	1981	PERC	RH11-1	784005.2	7914446.4	476.8	21.5	14	240	-50
HSE	1981	PERC	RH11-10	783986.6	7914436.6	479.3	41.0	8	237	-50
HSE	1981	PERC	RH11-11	784005.9	7914446.4	477.3	53.0	8	237	-50
HSE	1981	PERC	RH11-2	783990.4	7914438.5	478.6	20.0	13	240	-50

For personal use only

Company	Year	Drill Type	Hole Name	MGA East	MGA North	RL	Total Depth	Au assays	Azimuth	Dip
HSE	1981	PERC	RH11-3	783981.8	7914433.5	479.8	23.0	15	240	-50
HSE	1981	PERC	RH11-4	783973.3	7914428.8	481.1	21.5	14	240	-50
HSE	1981	PERC	RH11-5	783964.6	7914423.7	482.1	24.5	16	240	-50
HSE	1981	PERC	RH11-6	783955.8	7914418.8	484.4	23.0	15	240	-50
HSE	1981	PERC	RH11-7	783947.6	7914413.8	485.3	20.0	13	240	-50
HSE	1981	PERC	RH11-8	783939.8	7914407.1	485.7	20.0	13	240	-50
HSE	1981	PERC	RH11-9	783930.4	7914403.6	486.8	20.0	13	240	-50
HSE	1981	PERC	RH12-1	784029.2	7914430.8	474.9	53.0	35	240	-50
HSE	1981	PERC	RH12-10	783951.3	7914387.0	483.8	20.0	13	240	-50
HSE	1981	PERC	RH12-11	784032.2	7914432.5	474.6	60.0	7	239	-60
HSE	1981	PERC	RH12-2	784020.6	7914425.7	475.9	20.0	13	240	-50
HSE	1981	PERC	RH12-3	784012.0	7914420.8	477.0	41.0	27	240	-50
HSE	1981	PERC	RH12-4	784003.8	7914416.1	477.9	36.5	24	240	-50
HSE	1981	PERC	RH12-5	783994.8	7914411.1	479.0	33.5	21	240	-50
HSE	1981	PERC	RH12-6	783986.0	7914406.1	480.9	27.5	18	240	-50
HSE	1981	PERC	RH12-7	783977.5	7914401.3	481.8	20.0	13	240	-50
HSE	1981	PERC	RH12-8	783969.0	7914396.4	482.6	8.0	4	240	-50
HSE	1981	PERC	RH12-9	783960.3	7914391.4	483.3	20.0	13	240	-50
HSE	1981	PERC	RH13-1	784033.4	7914404.3	474.9	54.5	36	240	-50
HSE	1981	PERC	RH13-10	784043.1	7914407.5	474.2	54.0	11	244	-60
HSE	1981	PERC	RH13-11	784044.6	7914408.2	474.1	60.0	9	6	-90
HSE	1981	PERC	RH13-12	784059.1	7914419.2	472.9	86.0	57	240	-50
HSE	1981	PERC	RH13-13	783999.3	7914381.2	478.7	30.0	11	6	-90
HSE	1981	PERC	RH13-2	784024.6	7914399.5	475.8	39.5	26	240	-50
HSE	1981	PERC	RH13-3	784016.0	7914394.5	477.5	35.0	23	240	-50
HSE	1981	PERC	RH13-4	784007.2	7914389.6	478.5	32.0	21	240	-50
HSE	1981	PERC	RH13-5	783998.6	7914381.1	479.4	23.0	15	240	-50
HSE	1981	PERC	RH13-6	783989.9	7914379.6	480.3	21.5	14	240	-50
HSE	1981	PERC	RH13-7	783981.4	7914374.6	481.1	20.0	13	240	-50
HSE	1981	PERC	RH13-8	783972.8	7914369.8	481.8	20.0	13	240	-50
HSE	1981	PERC	RH13-9	783964.3	7914364.6	481.8	20.0	13	240	-50
HSE	1981	PERC	RH14-1	784037.2	7914378.1	475.2	50.0	33	240	-50
HSE	1981	PERC	RH14-2	784028.6	7914373.0	476.1	36.5	24	240	-50
HSE	1981	PERC	RH14-3	784019.8	7914368.0	476.9	32.0	21	240	-50
HSE	1981	PERC	RH14-4	784011.0	7914362.8	477.7	27.5	18	240	-50
HSE	1981	PERC	RH14-5	784002.7	7914358.3	478.6	23.0	15	240	-50
HSE	1981	PERC	RH14-5a	784003.5	7914358.8	478.6	24.0	15	237	-50
HSE	1981	PERC	RH14-6	783993.6	7914352.9	480.4	15.5	9	240	-50
HSE	1981	PERC	RH14-7	783985.5	7914348.5	481.3	8.0	4	240	-50
HSE	1981	PERC	RH14-8	784046.0	7914382.5	475.0	48.0	9	237	-60
HSE	1981	PERC	RH15-1	784049.3	7914356.2	474.3	39.5	26	240	-50
HSE	1981	PERC	RH15-10	784069.5	7914365.3	472.9	53.0	9	242	-52
HSE	1981	PERC	RH15-2	784040.9	7914351.2	475.0	33.5	22	240	-50
HSE	1981	PERC	RH15-3	784032.0	7914346.2	475.7	29.0	19	240	-50
HSE	1981	PERC	RH15-4	784023.7	7914341.3	477.0	24.5	16	240	-50
HSE	1981	PERC	RH15-5	784014.8	7914336.3	477.7	20.0	13	240	-50
HSE	1981	PERC	RH15-6	784006.3	7914331.4	478.3	9.5	5	240	-50
HSE	1981	PERC	RH15-7	783997.2	7914326.4	478.9	20.0	12	240	-50
HSE	1981	PERC	RH15-8	783988.0	7914322.1	478.7	20.0	13	240	-50
HSE	1981	PERC	RH15-9	784058.0	7914361.2	473.8	47.0	31	240	-50
HSE	1981	PERC	RH16-1	784061.7	7914334.1	473.9	21.5	14	240	-50
HSE	1981	PERC	RH16-10	784074.9	7914341.8	473.2	47.0	4	237	-52
HSE	1981	PERC	RH16-2	784053.0	7914329.2	474.8	27.5	18	240	-50
HSE	1981	PERC	RH16-3	784044.3	7914324.2	475.3	24.5	16	240	-50
HSE	1981	PERC	RH16-4	784035.6	7914319.3	475.7	20.0	13	240	-50
HSE	1981	PERC	RH16-5	784026.9	7914314.4	476.1	20.0	13	240	-50

For personal use only

Company	Year	Drill Type	Hole Name	MGA East	MGA North	RL	Total Depth	Au assays	Azimuth	Dip
HSE	1981	PERC	RH16-6	784018.2	7914309.5	476.4	21.5	14	240	-50
HSE	1981	PERC	RH16-7	784009.6	7914304.5	476.8	20.0	13	240	-50
HSE	1981	PERC	RH16-8	784000.8	7914299.7	476.8	20.0	13	240	-50
HSE	1981	PERC	RH16-9	784066.6	7914336.8	474.1	41.0	5	237	-53
HSE	1981	PERC	RH17-1	784074.0	7914312.4	473.7	29.0	17	240	-50
HSE	1981	PERC	RH17-2	784065.3	7914307.4	474.2	35.0	23	240	-50
HSE	1981	PERC	RH17-3	784056.7	7914302.5	474.5	24.5	16	240	-50
HSE	1981	PERC	RH17-4	784047.9	7914297.6	474.8	20.0	13	240	-50
HSE	1981	PERC	RH17-5	784039.2	7914292.6	475.1	20.0	13	240	-50
HSE	1981	PERC	RH17-6	784031.9	7914288.4	475.3	20.0	13	240	-50
HSE	1981	PERC	RH17-7	784021.9	7914282.8	475.6	20.0	13	240	-50
HSE	1981	PERC	RH17-8	784082.7	7914317.2	473.4	47.0	4	237	-50
HSE	1981	PERC	RH18-1	784102.3	7914242.2	473.0	20.0	13	240	-50
HSE	1981	PERC	RH18-2	784093.5	7914237.3	473.4	20.0	13	240	-50
HSE	1981	PERC	RH18-3	784084.8	7914232.4	473.8	47.0	31	240	-50
HSE	1981	PERC	RH18-4	784076.2	7914227.4	474.2	20.0	13	240	-50
HSE	1981	PERC	RH18-5	784067.5	7914222.5	474.5	34.5	22	240	-50
HSE	1981	PERC	RH18-6	784058.8	7914217.6	474.6	20.0	13	240	-50
HSE	1981	PERC	RH18-7	784050.1	7914212.7	474.5	20.0	13	240	-50
HSE	1981	PERC	RH18-8	784041.4	7914207.8	474.4	24.5	16	240	-50
HSE	1981	PERC	RH18-9	784111.5	7914246.8	473.1	59.0	7	237	-55
HSE	1981	PERC	RH19-1	784126.9	7914198.7	473.0	20.0	13	240	-50
HSE	1981	PERC	RH19-10	784130.8	7914201.0	470.5	53.0	10	237	-55
HSE	1981	PERC	RH19-2	784118.2	7914193.9	472.1	28.5	18	240	-50
HSE	1981	PERC	RH19-3	784109.5	7914188.9	471.9	30.5	20	240	-50
HSE	1981	PERC	RH19-4	784100.8	7914183.9	472.3	35.0	23	240	-50
HSE	1981	PERC	RH19-5	784092.1	7914179.1	472.0	26.0	17	240	-50
HSE	1981	PERC	RH19-6	784083.4	7914174.1	472.1	21.5	14	240	-50
HSE	1981	PERC	RH19-7	784074.7	7914169.2	472.5	23.0	15	240	-50
HSE	1981	PERC	RH19-8	784066.1	7914164.3	472.0	20.0	13	240	-50
HSE	1981	PERC	RH19-9	784057.3	7914159.3	471.4	23.0	15	240	-50
HSE	1981	PERC	RH20-1	784176.1	7914111.8	469.5	20.0	13	240	-50
HSE	1981	PERC	RH20-2	784167.5	7914106.9	469.5	20.0	13	240	-50
HSE	1981	PERC	RH20-3	784158.8	7914102.0	469.5	20.0	13	240	-50
HSE	1981	PERC	RH20-4	784150.0	7914097.0	469.5	23.0	15	240	-50
HSE	1981	PERC	RH20-5	784141.3	7914092.2	469.6	20.0	13	240	-50
HSE	1981	PERC	RH20-6	784132.7	7914087.2	469.8	20.0	13	240	-50
HSE	1981	PERC	RH20-7	784124.0	7914082.2	470.0	20.0	13	240	-50
HSE	1981	PERC	RH20-8	784115.3	7914077.4	470.2	20.0	13	240	-50
HSE	1981	PERC	RH20-9	784106.5	7914072.4	470.4	20.0	13	240	-50
HSE	1981	PERC	RH21-1	784225.4	7914024.9	470.5	36.5	24	240	-50
HSE	1981	PERC	RH21-2	784216.7	7914019.9	470.5	23.0	15	240	-50
HSE	1981	PERC	RH21-3	784208.0	7914015.0	470.5	38.0	25	240	-50
HSE	1981	PERC	RH21-4	784199.3	7914010.1	470.5	33.5	22	240	-50
HSE	1981	PERC	RH21-5	784190.6	7914005.1	470.6	26.0	17	240	-50
HSE	1981	PERC	RH21-6	784181.9	7914000.3	470.8	23.0	15	240	-50
HSE	1981	PERC	RH21-7	784173.3	7913995.3	470.9	20.0	13	240	-50
HSE	1981	PERC	RH21-8	784164.6	7913990.3	470.9	20.0	13	240	-50
HSE	1981	PERC	RH21-9	784221.3	7914021.0	470.6	47.0	4	239	-55
HSE	1981	PERC	RH22-1	784274.7	7913937.9	472.0	20.0	13	240	-50
HSE	1981	PERC	RH22-2	784266.0	7913933.0	472.1	20.0	13	240	-50
HSE	1981	PERC	RH22-3	784257.3	7913928.1	472.2	20.0	13	240	-50
HSE	1981	PERC	RH22-4	784248.5	7913923.1	472.6	35.0	23	240	-50
HSE	1981	PERC	RH22-5	784239.9	7913918.2	472.8	27.5	18	240	-50
HSE	1981	PERC	RH22-6	784231.2	7913913.3	472.9	20.0	13	240	-50
HSE	1981	PERC	RH22-7	784224.2	7913909.3	472.9	2.0		240	-50

For personal use only

Company	Year	Drill Type	Hole Name	MGA East	MGA North	RL	Total Depth	Au assays	Azimuth	Dip
HSE	1981	PERC	RH22-8	784271.4	7913935.0	472.1	47.0	5	239	-55
HSE	1981	PERC	RH23-1	784323.9	7913851.0	472.6	21.5	14	240	-50
HSE	1981	PERC	RH23-2	784315.2	7913846.0	472.8	21.5	14	240	-50
HSE	1981	PERC	RH23-3	784306.6	7913841.1	473.1	27.5	18	240	-50
HSE	1981	PERC	RH23-4	784297.8	7913836.2	473.5	21.5	14	240	-50
HSE	1981	PERC	RH23-5	784288.8	7913830.9	473.8	20.0	13	240	-50
HSE	1981	PERC	RH23-6	784282.1	7913826.9	474.0	20.0	13	240	-50
HSE	1981	PERC	RH23-7	784271.5	7913821.2	473.2	20.0	13	240	-50
HSE	1981	PERC	RH23-8	784327.2	7913853.4	472.7	47.0	7	240	-55
HSE	1981	PERC	RH24-1	784373.2	7913764.1	471.5	20.0	13	240	-50
HSE	1981	PERC	RH24-2	784364.5	7913759.1	471.6	42.5	27	240	-50
HSE	1981	PERC	RH24-3	784355.8	7913754.1	471.6	35.0	23	240	-50
HSE	1981	PERC	RH24-4	784347.1	7913749.3	471.6	27.5	18	240	-50
HSE	1981	PERC	RH24-5	784338.4	7913744.3	471.6	20.0	13	240	-50
HSE	1981	PERC	RH24-6	784329.7	7913739.4	471.5	20.0	13	240	-50
HSE	1981	PERC	RH24-7	784385.9	7913771.9	471.5	53.0	3	237	-55
HSE	1981	PERC	RH25-1	784431.1	7913682.0	468.1	21.5	12	240	-50
HSE	1981	PERC	RH25-2	784422.4	7913677.0	467.9	20.0	11	240	-50
HSE	1981	PERC	RH25-3	784413.8	7913672.2	467.9	20.0	12	240	-50
HSE	1981	PERC	RH25-4	784405.0	7913667.2	467.8	20.0	12	240	-50
HSE	1981	PERC	RH25-5	784396.3	7913662.3	467.8	21.5	11	240	-50
HSE	1981	PERC	RH25-6	784387.6	7913657.4	467.8	21.5	11	240	-50
HSE	1981	PERC	RH25-7	784379.0	7913652.4	467.9	20.0	13	240	-50
HSE	1981	PERC	RH25-8	784370.3	7913647.5	468.0	27.5	18	240	-50
HSE	1981	PERC	RH25-9	784361.5	7913642.6	468.0	21.5	14	240	-50
HSE	1981	PERC	RH31-1	784281.9	7913884.6	472.6	36.5	23	240	-50
HSE	1981	PERC	RH31-2	784273.2	7913879.7	473.0	45.5	30	240	-50
HSE	1981	PERC	RH31-3	784264.5	7913874.7	473.0	39.5	26	240	-50
HSE	1981	PERC	RH31-4	784255.8	7913869.9	473.2	35.0	23	240	-50
HSE	1981	PERC	RH31-5	784299.3	7913894.5	472.5	46.0	6	237	-55
HSE	1981	PERC	RH31-6	784350.6	7913923.5	472.3	59.0	3	237	-55
HSE	1981	PERC	RH32-1	784215.3	7913961.7	471.8	31.0	19	240	-50
HSE	1981	PERC	RH32-2	784206.5	7913956.8	471.6	20.0	13	240	-50
HSE	1981	PERC	RH32-3	784197.8	7913951.8	472.1	21.5	14	240	-50
HSE	1981	PERC	RH33-1	784174.7	7914054.1	470.1	35.0	2	237	-55
KID	1989	RC	JPRC1	783992.6	7914407.5	480.1	162.0	79	282	-60
DRAU	2011	RAB	LM1	784266.8	7913861.1	474.4	12.0	11	360	-90
DRAU	2011	RAB	LM10	784325.0	7913766.1	473.4	12.0	11	360	-90
DRAU	2011	RAB	LM11	784326.2	7913753.9	472.8	12.0	10	360	-90
DRAU	2011	RAB	LM12	784335.5	7913727.1	471.1	12.0	11	360	-90
DRAU	2011	RAB	LM13	784338.8	7913716.2	470.6	12.0	11	360	-90
DRAU	2011	RAB	LM14	784342.8	7913703.5	469.7	12.0	11	360	-90
DRAU	2011	RAB	LM15	784273.0	7913864.7	474.3	21.0	20	360	-90
DRAU	2011	RAB	LM16	784279.2	7913854.2	474.3	28.0	27	360	-90
DRAU	2011	RAB	LM17	784284.9	7913843.1	474.3	17.0	16	360	-90
DRAU	2011	RAB	LM18	784301.3	7913821.8	474.2	28.0	27	360	-90
DRAU	2011	RAB	LM19	784316.7	7913816.6	473.9	28.0	27	360	-90
DRAU	2011	RAB	LM2	784350.4	7913705.6	469.0	28.0	27	360	-90
DRAU	2011	RAB	LM20	784323.2	7913805.1	473.7	28.0	27	360	-90
DRAU	2011	RAB	LM21	784326.8	7913796.7	473.6	28.0	26	360	-90
DRAU	2011	RAB	LM22	784329.6	7913780.2	473.5	28.0	27	360	-90
DRAU	2011	RAB	LM23	784333.5	7913767.7	472.9	28.0	27	360	-90
DRAU	2011	RAB	LM24	784335.7	7913747.4	472.3	17.0	16	360	-90
DRAU	2011	RAB	LM25	784343.4	7913728.9	470.1	15.0	14	360	-90
DRAU	2011	RAB	LM26	784344.7	7913719.7	470.0	28.0	27	360	-90
DRAU	2011	RAB	LM3	784272.2	7913849.6	474.2	12.0	11	360	-90

For personal use only

Company	Year	Drill Type	Hole Name	MGA East	MGA North	RL	Total Depth	Au assays	Azimuth	Dip
DRAU	2011	RAB	LM4	784279.0	7913839.8	474.2	12.0	11	360	-90
DRAU	2011	RAB	LM5	784292.3	7913816.5	474.5	11.0	10	360	-90
DRAU	2011	RAB	LM6	784308.6	7913812.7	474.2	12.0	11	360	-90
DRAU	2011	RAB	LM7	784315.5	7913803.2	473.9	12.0	11	360	-90
DRAU	2011	RAB	LM8	784320.4	7913791.4	473.7	12.0	11	360	-90
DRAU	2011	RAB	LM9	784322.7	7913778.3	473.6	12.0	11	360	-90

For personal use only