

ASX Announcement

13 October 2025

## **Cassowary Copper-Gold Exploration Project in Western Australia Access Agreement Executed**

### **Highlights**

- Land Access Agreement for the Cassowary Exploration Project executed with the Pila Nguru (Aboriginal Corporation) RNTBC, the registered Native Title Body Corporate
- The Agreement provides access to the Cassowary Project including the recently granted 341km<sup>2</sup> tenement (E69/4266) covering the large, interpreted Cassowary Intrusion
- The Cassowary Intrusion lies within a >30km wide interpreted rift zone adjoining the Madura Crustal Boundary, a major geological feature
- Tenement area recently increased to ~1129km<sup>2</sup> to cover additional targets within the rift zone, south of two applications by WA1 Resources Limited
- Magnetic data reveals a large concentric footprint to the Cassowary Intrusion and strong geological disruption, indicating potential for IOCG type copper-gold mineralisation
- Pursuant to the Agreement, Artemis is preparing a work program for planned diamond drilling as an initial test of the Cassowary Intrusion
- Site activities are targeted to commence in December, subject to Artemis submitting work programs and Pila Nguru conducting heritage surveys over specific areas

Artemis Resources Limited (ASX/AIM: ARV) (“Artemis” or “the Company”) is pleased to advise that wholly owned subsidiary, KML No 2 Pty Ltd, has executed a Land Access Agreement with the Pila Nguru (Aboriginal Corporation) RNTBC to access and explore the Cassowary Copper-Gold Exploration Project in the Nullarbor region of Western Australia (refer Figure 1).

The agreement applies to granted exploration licence (E69/4266) covering the large, interpreted Cassowary Intrusion and four (4) pending applications (E69/4317, E69/4318, E69/4330 and E69/4334) covering other intrusions and structural targets interpreted from geophysical data.

Given the unique location of the Cassowary Intrusion on a major crustal boundary and the scale of disruption of the surrounding geology by the intrusion, Cassowary is considered prospective for IOCG-type Copper-Gold, and potentially other types of intrusion related mineralisation<sup>1</sup>.

---

<sup>1</sup> Refer ASX Announcement “Key Cassowary Tenement Granted” dated 18 August 2025

**Julian Hanna, Technical Director, commented:**

*“I am very pleased to report that a Land Access Agreement has been signed with the Pila Nguru Native Title Holders. This is a major milestone for Artemis which should allow heritage surveys to commence for planned on-ground exploration, including initial drilling and gravity surveys. On behalf of Artemis, I would like to thank the Pila Nguru Directors and their advisers, Central Desert Native Title Services for their support in progressing the Agreement in a timely manner.*

*We look forward to reporting progress of this exciting project in coming weeks.”*

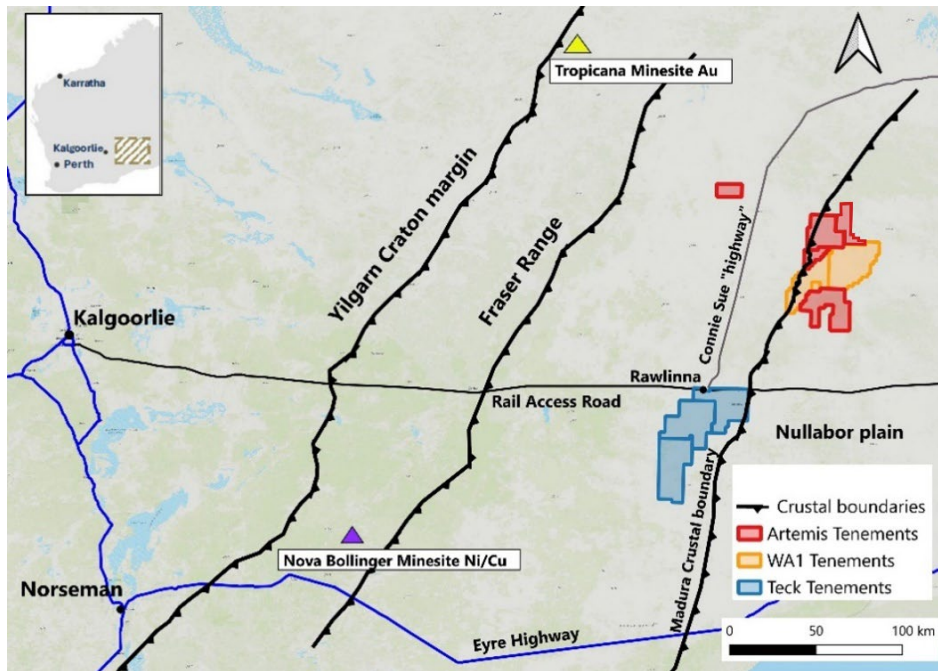


Figure 1: Location map showing three major crustal boundaries, Cassowary tenements and main access roads

**Cassowary Copper-Gold Exploration Project – Geological Setting**

The Cassowary Project includes several intrusions interpreted within a >30km wide rift zone bounded to the west by >500km long Madura Crustal Boundary (Refer Figures 1 & 2).

The Proterozoic sequence hosting the target intrusions is buried below an estimated 250-300m of consolidated Eucla Basin sediments comprising limestone, sandstone and shale. Estimated thickness of the Eucla Basin sequence is based on 13 historic drill holes across the region which intersected basement at an average depth of 239m. Only two drill holes (BKD1, BKD2) located 28km southeast of Cassowary Intrusion have been drilled within the rift zone (Refer Figure 2).

The rift zone sequence is expected to include metamorphosed sediments, mafic volcanics and intrusions based on sparse drilling across the wider Madura Province and geophysical data<sup>2</sup>. The interpreted intrusions appear to be associated with rift margins and cross cutting structures. Artemis recently increased its tenement area to around 1129km<sup>2</sup> to cover additional targets within the interpreted rift zone, south of two applications by WA1 Resources Limited (WA1)<sup>3</sup>.

<sup>2</sup> Refer to Figure 2 in this announcement

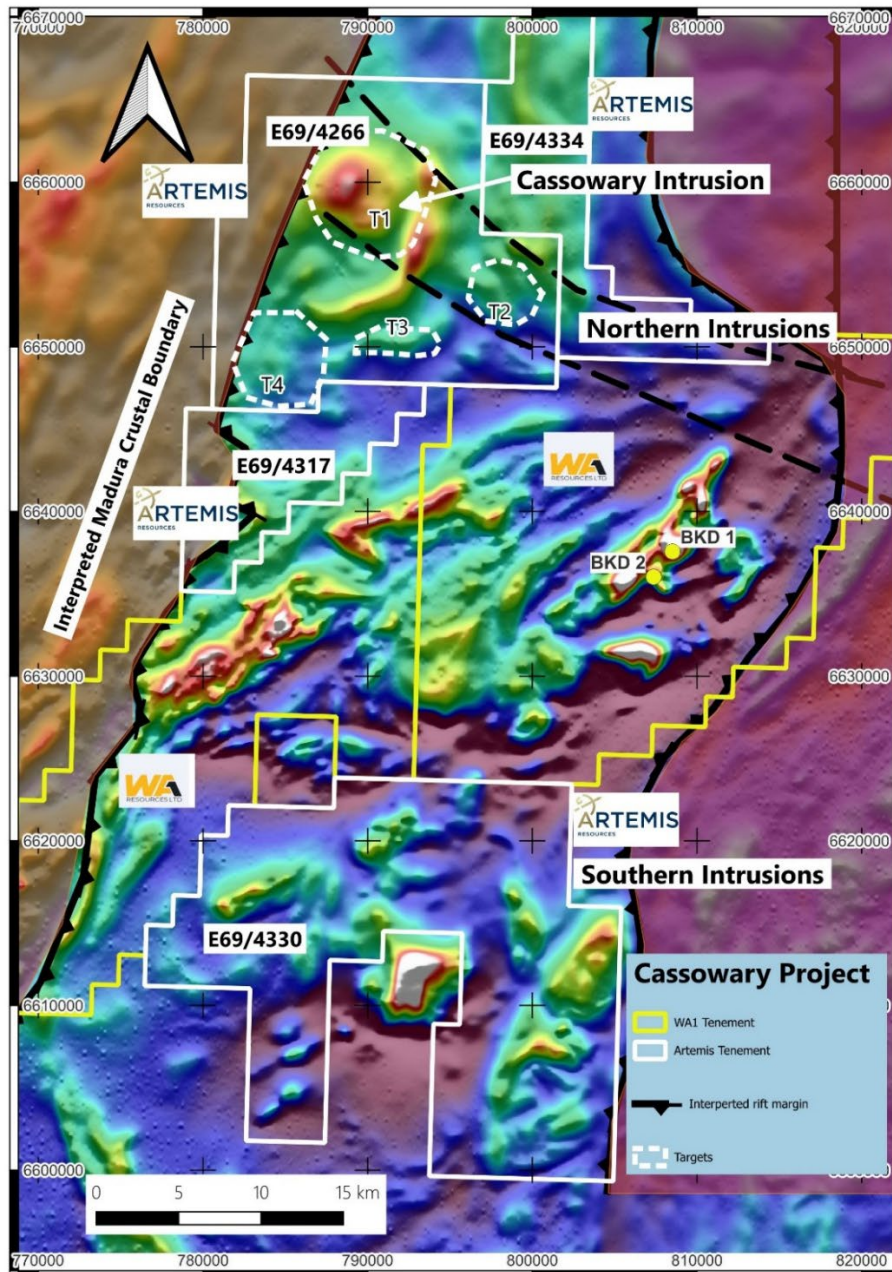
<sup>3</sup> Refer to WA1 Resources announcement on 28 April 2025 and Figure 2 in this announcement

## Cassowary Intrusion

The Cassowary Intrusion is a large, untested copper-gold exploration target located in a very favourable setting on the margin of a major crustal boundary. A preliminary diamond drilling program is targeting to commence in December subject to heritage clearances.

Key features of the Cassowary Intrusion interpreted from magnetic data<sup>4</sup> include:

- large concentric magnetic footprint (5-10kms width)
- intruded along eastern contact of the Madura Crustal Boundary
- coincides with 3-4km wide cross-cutting fault zone
- disrupted surrounding magnetic units by >20kms to the east
- displaced Madura Crustal Boundary by >5kms to the west
- focus for magmatic activity, possible conduit for mineralising fluids



**Figure 2: Magnetic image<sup>5</sup> showing Madura Crustal Boundary, interpreted rift zone, Artemis and WA1 Resources tenements and targets within the area of Northern Intrusions.** Source: TMI image from Geoscience Australia survey P1208 (Eucla Basin 1, 2009) at 200 m line spacing. Data locally enhanced to assist geological/structural interpretation

<sup>4</sup> Refer to Figure 2 in this announcement

<sup>5</sup> Source of magnetic image: Geoscience Australia survey P1208 (Eucla Basin 1, 2009)

Tenement	Holder	Status	Km <sup>2</sup> Area
E69/4266	KML No 2 Pty Ltd	Granted	341
E69/4318	KML No 2 Pty Ltd	Pending	107
E69/4334	KML No 2 Pty Ltd	Pending	134
E69/4317	KML No 2 Pty Ltd	Pending	101
E69/4330	KML No 2 Pty Ltd	Pending	446
<b>Total</b>			<b>1,129</b>

**Table 1: Schedule of Cassowary Project tenements held by Artemis subsidiary KML No 2 Pty Ltd**

**This announcement was approved for release by the Board**

**For further information:**

<b>Jozsef Patarica</b> Executive Director Artemis Resources Limited +61 8 6261 5463 info@artemisresources.com.au	<b>Mr Julian Hanna</b> Technical Director Artemis Resources Limited +61 8 6261 5463 info@artemisresources.com.au
--	--

#### **Competent Person Statement**

The information in this report that relates to Exploration Results was compiled by Mr Julian Hanna, a Competent Person who is a member of the Australasian Institute of Mining and Metallurgy (MAusIMM). Mr Hanna is Technical Director of Artemis Resources Ltd and has sufficient experience that is relevant to the style of mineralisation and type of deposit under consideration and to the activity being undertaken to qualify as a Competent Person as defined in the 2012 Edition of the 'Australasian Code for Reporting of Exploration Results, Mineral Resources and Ore Reserves'. Mr Hanna consents to the inclusion in this report of the matters based on his information in the form and context in which it appears.

#### **No New Information**

To the extent that this announcement contains references to prior exploration results which have been cross referenced to previous market announcements made by the Company, unless explicitly stated, no new information is contained. The Company confirms that it is not aware of any new information or data that materially affects the information included in the relevant market announcements and, in the case of estimates of Mineral Resources, that all material assumptions and technical parameters underpinning the estimates in the relevant market announcements continue to apply and have not materially changed.

#### **Forward Looking Statements**

This announcement contains historical facts, interpretations and statements relating to the Company's current exploration projects, drill targets, plans, estimates, objectives, and strategies which are forward-looking statements. Such forward-looking statements involve known and unknown risks, uncertainties and other important factors beyond the Company's control that could cause the actual results, performance, or achievements of the Company to be materially different from future results, performance or achievements expressed or implied by such forward-looking statements. Accordingly, any reliance you place on such forward-looking statements will be at your sole risk and the Company expressly disclaims any obligation or undertaking to disseminate any updates or revisions to any forward-looking statements contained in this announcement to reflect any changes in its expectations with regard thereto or any change in events, conditions or circumstances on which any statement is based. The information contained in this announcement is subject to change without notice. No representation or warranty, express or implied, is given as to the accuracy, completeness or fairness of the information or opinions contained in this announcement and no liability is accepted by the Company or any of its directors, members, officers, employees, agents, or advisers for any such information or opinions.

---

## About Artemis Resources

Artemis Resources (ASX/AIM:ARV) is a gold and copper focused resources company with a highly attractive suite of projects including projects in Western Australia's underexplored North Pilbara Gold Province and at the Cassowary Exploration Project located 440km east of Kalgoorlie in Western Australia.

- **Attractive projects:**
  - **Gold/Copper – Karratha Gold Project** (100%) multiple prospects incl: Carlow, Titan, Thorpe
  - **Copper/Gold – Cassowary Exploration Project** – large IOCG type targets
  - **Paterson Gold/Copper Project** – adjacent to Havieron Mine (owned Greatland Gold)
  - **Lithium** – Artemis/Greentech Lithium JV: Mt Marie, Kobe, Osborne
- **Highly strategic location:** Tier 1 jurisdiction, close proximity to major hub at Karratha including regional rail and road infrastructure, administrative centre and Dampier Port
- **Significant exploration upside:** highly prospective tenure package in the Pilbara Region of Western Australia which is rapidly emerging gold province dominated by >12Moz Au Hemi Project
- **Mineral Resource with growth potential:** existing high-grade gold-copper Mineral Resource at Carlow
- **Established processing site at Radio Hill:** strategically located, fully permitted
- **Cassowary Exploration Project:** Artemis holds a granted 341km<sup>2</sup> exploration licence covering the large, interpreted Cassowary Intrusion prospective for IOCG type copper/gold and has applied for four other exploration licences to cover other interpreted intrusions within a 30-40km wide interpreted rift zone