

13 October 2025

Board and management

Non-Executive Chairman

Mark Connelly

Managing Director & CEO

Amanda Buckingham

Non-Executive Director

Dianmin Chen

Chief Financial Officer

Graeme Morissey

GM Corporate & GC

Stuart Burvill

Company Secretary

David Palumbo

Exploration Manager –

Western Australia

Thomas Dwight

Exploration Manager –

Nevada

Steve McMillin

Chief Geologist

Peng Sha

Capital structure

Last traded price

A\$0.24

Current shares on issue

1,197 M

Current market

capitalisation

A\$287 M

Cash

A\$24.4 M (at 30 June 2025)

Debt

Zero

Strong Results At Ricciardo Continue To Validate Resource

HIGHLIGHTS:

- Assay results received for fifty (50) resource definition drillholes at Ricciardo, comprising two (2) RC holes and forty-eight (48) diamond-tail holes.
- Best intercepts returned from this drilling within the current MRE outline include:
 - 32m @ 4.64 g/t Au & 0.33% Sb (5.34 g/t AuEq) from 170m (RDRC077)**
 - 33m @ 2.05 g/t Au & 1.52% Sb (5.29 g/t AuEq) from 193m (RDRC079)**
 - 25m @ 7.43 g/t Au & 0.05% Sb (7.54 g/t AuEq) from 182m (RDRC074)**
 - 17.4m @ 1.18 g/t Au & 0.06% Sb (1.31 g/t AuEq) from 240.6m (RDRC079)**
 - 17m @ 1.18 g/t Au & 0.05% Sb (1.29 g/t AuEq) from 280m (RDRC079)**
 - 12m @ 1.20 g/t Au & 0.11% Sb (1.43 g/t AuEq) from 152m (RDRC074)**
 - 26m @ 0.35 g/t Au & 0.18% Sb (0.74 g/t AuEq) from 122m (RDRC074)**
- These results further demonstrate continuity within high-grade zones and across the broader existing Ricciardo Mineral Resource Estimate (**MRE**) outline.
- Resource definition drilling program at Ricciardo is ongoing.
- Assay results received for the single outstanding drillhole from Windinne Well, which was targeted to verify historical drilling results, and returned:
 - 2.6m @ 2.06 g/t Au from 324.6m (WWRC179)**
 - 3.2m @ 1.69 g/t Au from 345.9m (WWRC179)**

Warriedar Resources Limited (ASX: WA8) (**Warriedar** or the **Company**) is pleased to advise of the receipt of further diamond tail and Reverse Circulation (**RC**) drilling assay results from recent drilling at the Ricciardo and Windinne Well deposits, part of its Golden Range Project in the Murchison region of Western Australia.

Warriedar Managing Director and CEO, Amanda Buckingham, commented:

"I am pleased to report on further assay results from the Ricciardo resource definition drill program at Golden Range. These results deliver further confirmation and confidence to the significant gold and antimony resources defined to date at the flagship Ricciardo deposit. Our resource definition drilling activities at Ricciardo continue to advance efficiently, as does our evaluation of other targets within the broader 'Golden Corridor'."

The 'Golden Corridor' at Golden Range

The 'Golden Corridor' is Warriedar's key focus area within the Golden Range Project. This follows the success of the Company's growth-focused drilling of its flagship Ricciardo Au-Sb deposit over the past two years. The 'Golden Corridor' currently hosts an existing MRE of approximately 2.22 Moz AuEq.

The Ricciardo gold-antimony (Au-Sb) system spans a strike length of approximately 2.3km, with very limited drilling having been undertaken below 100m depth prior to Warriedar's ownership. Historical mining operations at Ricciardo were primarily focused on oxide material, with the transitional and primary sulphide mineralisation domains remaining systematically underexplored.



Figure 1: The location of the Ricciardo deposit within the Golden Range Project; within the broader Southern Murchison region.

Ricciardo Resource Definition Drilling Results

Warriedar is currently undertaking a significant resource definition drilling program at the Ricciardo deposit, which started in mid-2025 and is expected to continue until late 2025. The Company has completed a total of 73 holes for 20,087m (11,555 RC and 8,532 DD) to date. A key objective of the current drill program was to increase confidence in the existing Ricciardo MRE through infill drilling at tighter drill spacings.

RC drilling has been used to drill shallow positions within the existing MRE footprint where possible; and to provide pre-collars through the mainly unmineralised hanging wall for the later diamond tails, which target the deeper positions that RC drilling cannot reliably and accurately test.

Results for the first 50 drillholes have been received and are reported in this announcement. Of these, 5 drillholes have complete assays returned while the remaining 45 drillholes have assay results still pending (e.g. the diamond-tail component). Assays from the remaining 23 holes drilled are yet to be received.

Results have returned mineralisation in line with expectations, given their relative position within the resource outline. Resource definition drilling is ongoing at Ricciardo.

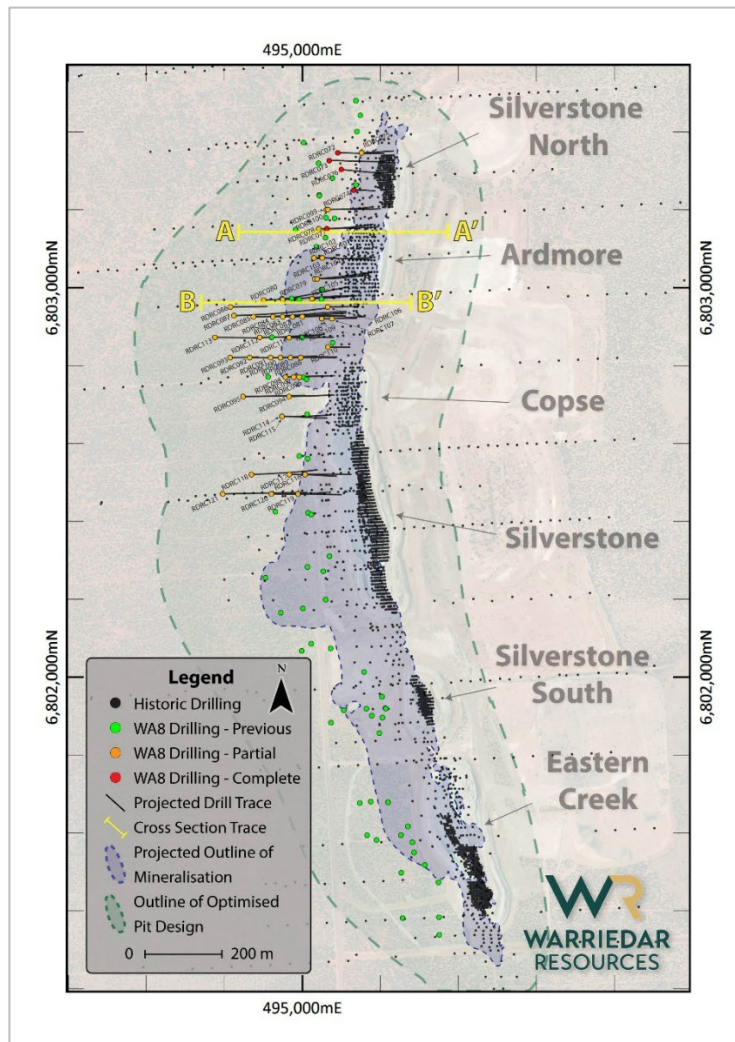


Figure 2: Plan view of Ricciardo showing the location of cross sections in Figures 4 and 5, and the location of reported drillholes.

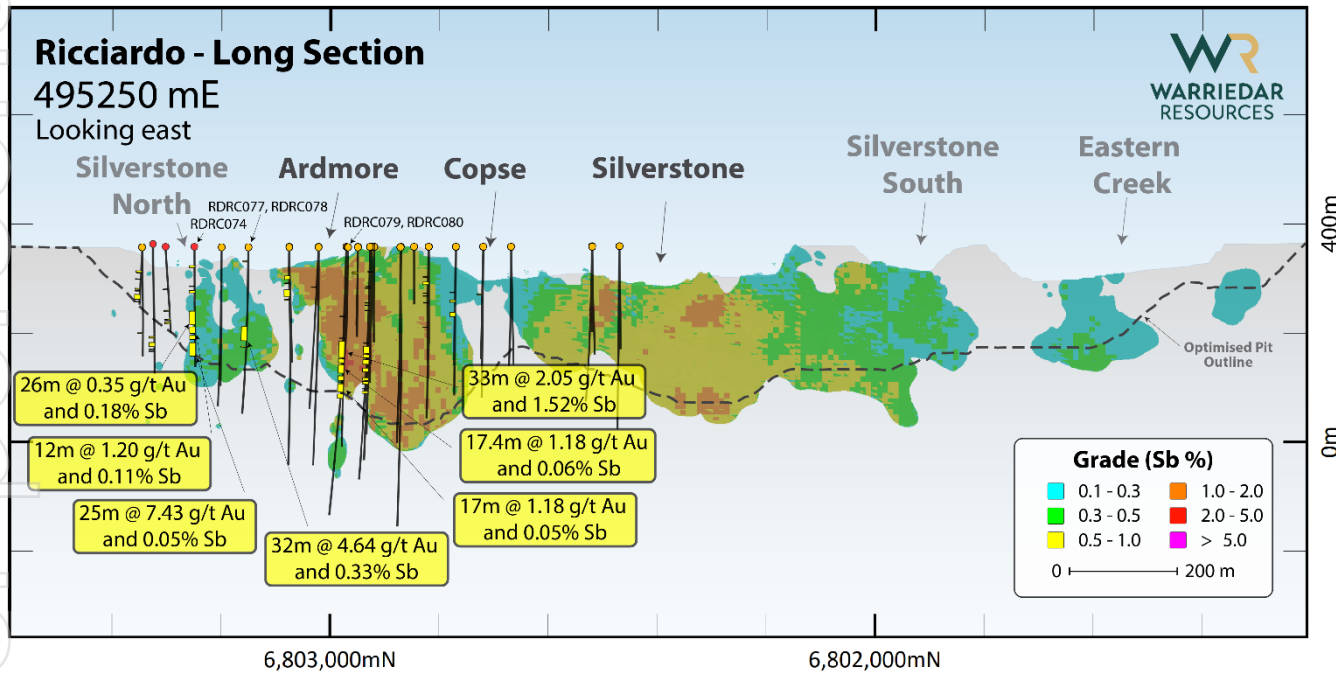
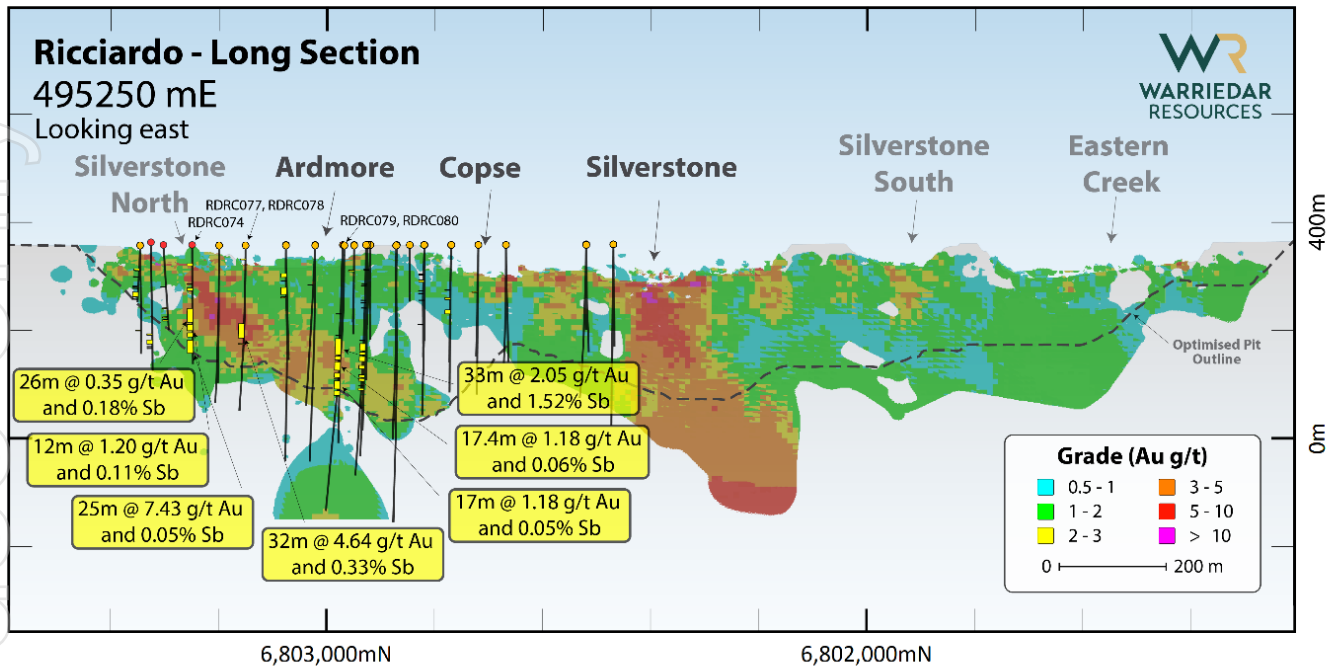


Figure 3: Long section through the Ricciardo Gold Block Model (top), Antimony Block Model (bottom), showing RDRC074, RDRC077, RDRC078 and RDRC079, RDRC080 drilled at the Ardmore end. The locations of the intervals reported in this release are highlighted and annotated.

Full drillhole collar locations and detailed assay results for the 50 holes the subject of this release are contained in Tables 1 and 2.

Noteworthy results include the excellent intervals returned from three diamond-tails, which were targeting infill of known high-grade antimony and gold zones within the existing MRE (refer Figure 5).

RDRC074 and RDRC077 were drilled within the current MRE outline, targeting the known high-grade Ardmore shoot and confirmed the continuity of high-grade mineralisation within the plunge of the currently defined shoot, returning:

- **25m @ 7.43 g/t Au & 0.05% Sb (7.54 g/t AuEq) from 182m (RDRC074)**
- **32m @ 4.64 g/t Au & 0.33% Sb (5.34 g/t AuEq) from 170m (RDRC077)**

RDRC079 targeted the defined high-grade, steeply dipping antimony zone just south of the high-grade Ardmore mineralisation, returning:

- **33m @ 1.52% Sb and 2.05 g/t Au (5.29 g/t AuEq) from 193m (RDRC079)**

Additional positive results from within the broader Ricciardo MRE footprint include:

- **17.4m @ 1.18 g/t Au & 0.06% Sb (1.31 g/t AuEq) from 240.6m (RDRC079)**
- **17m @ 1.18 g/t Au & 0.05% Sb (1.29 g/t AuEq) from 280m (RDRC079)**
- **12m @ 1.20 g/t Au & 0.11% Sb (1.43 g/t AuEq) from 152m (RDRC074)**
- **26m @ 0.35 g/t Au & 0.18% Sb (0.74 g/t AuEq) from 122m (RDRC074)**

Encouragingly, these results further confirm grade continuity within both the broader gold and antimony MRE outline, and the defined high-grade shoot zones of this existing MRE.

For personal use only

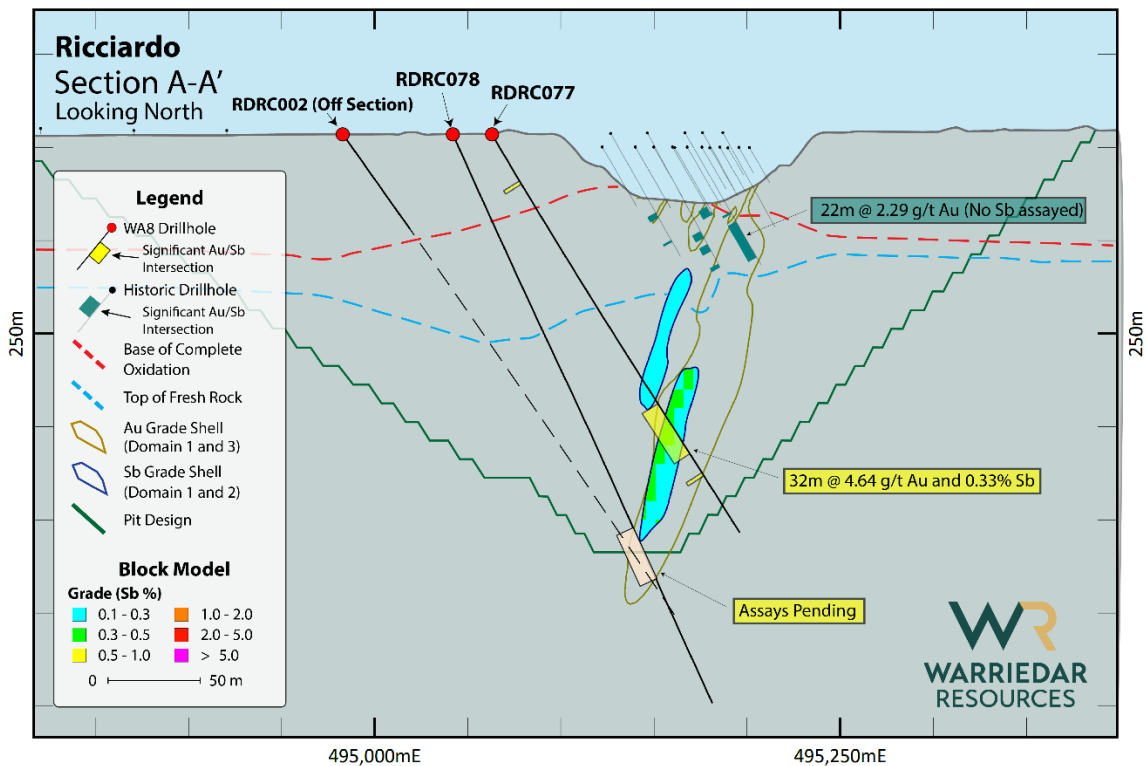
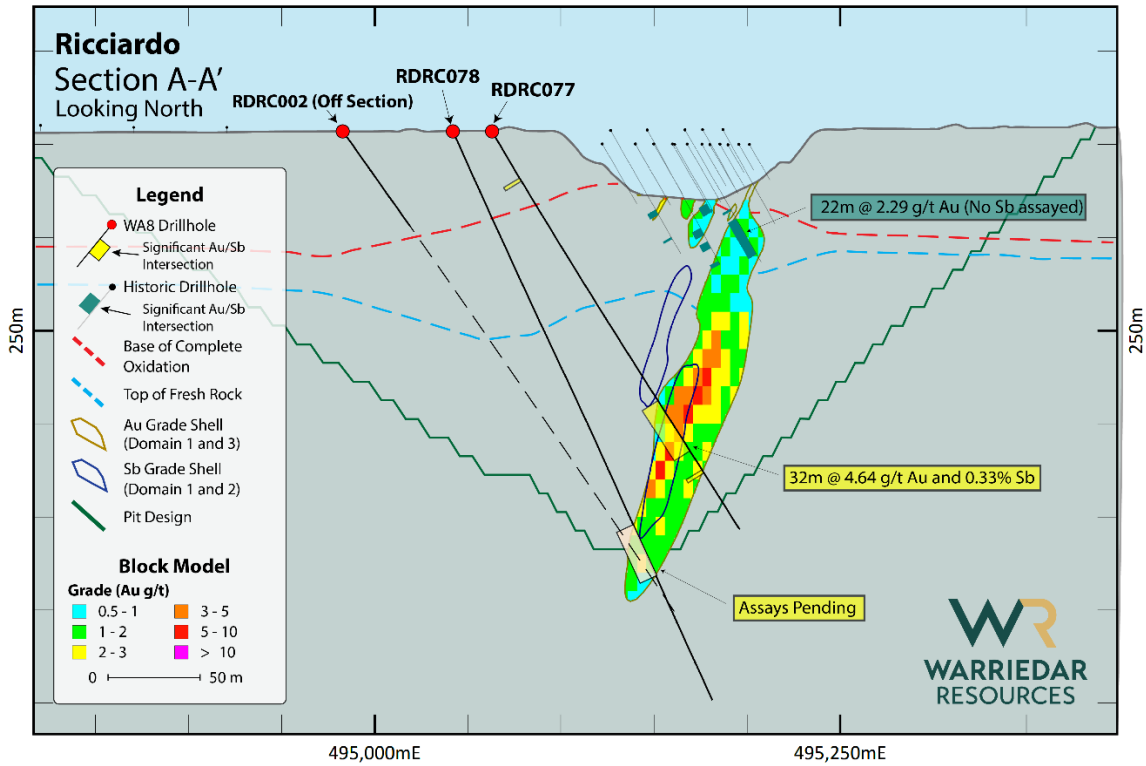


Figure 4: Section A-A' highlighting the intersection from RDR077 with the high-grade intersection plunging south-west into the page, overlying the Ricciardo Au Block Model (top), Sb Block Model (bottom), see Figure 3 for location.

For personal use only

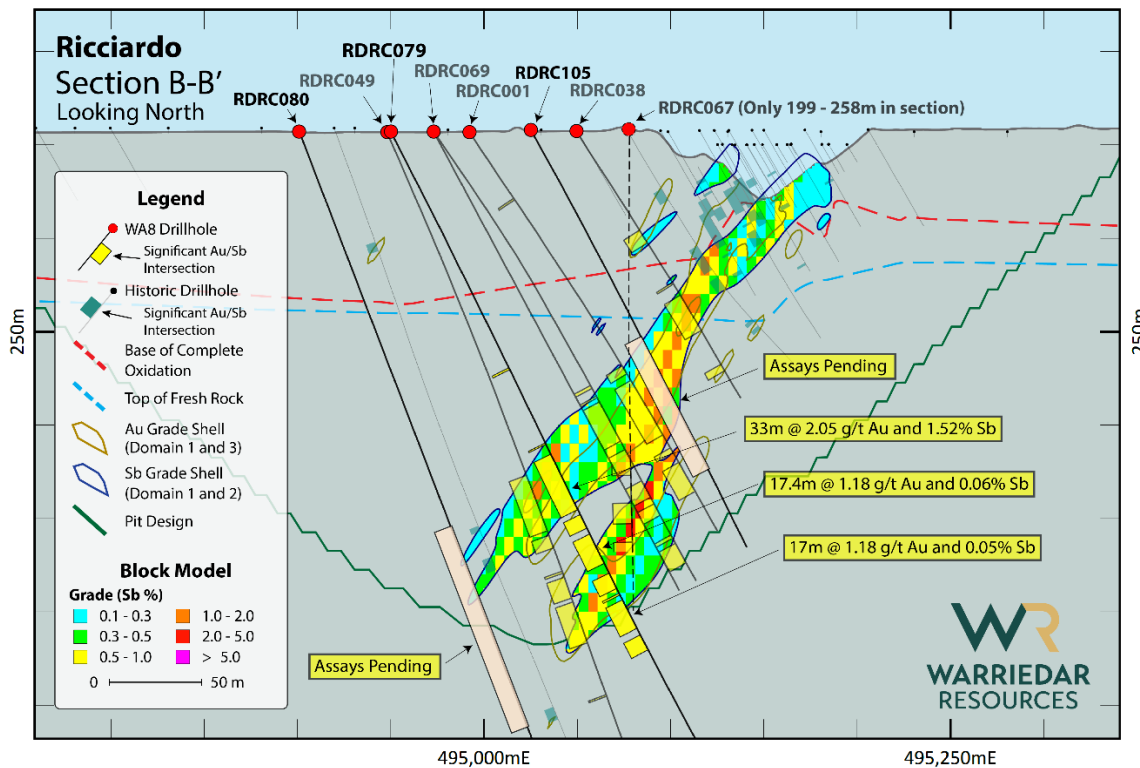
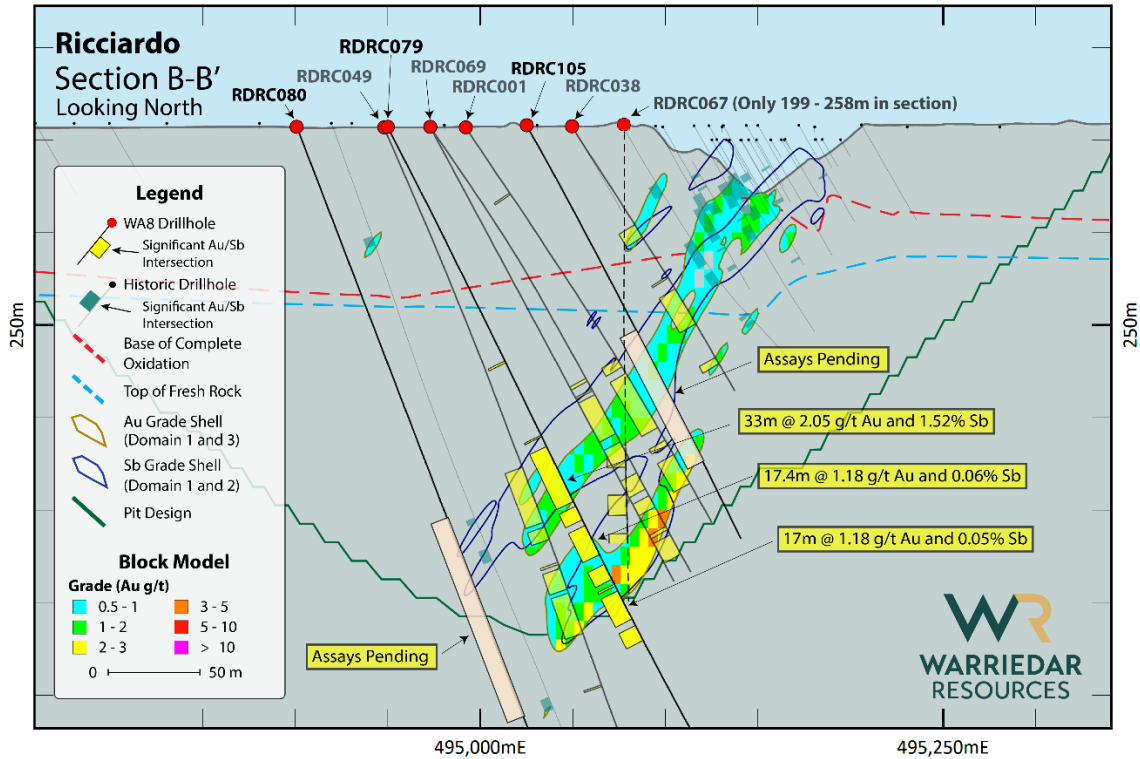


Figure 5: Section B-B' highlighting the intersection from RDR079 with the high-grade intersection plunging south-west into the page, overlying the Ricciardo Au Block model (top), Sb Block Model (bottom), see Figure 3 for location.

Windinne Well Context and Results

Windinne Well is located approximately 5km south of the existing Golden Range processing plant and approximately 2km south of Fenix's Shine Iron Ore Mine (see Figure 1). It is a banded iron formation (BIF) hosted orogenic gold deposit, a common style of gold mineralisation in Western Australian greenstone belts. Historically, only near-surface high-grade oxidised gold mineralisation has been mined at Windinne Well, with a remaining MRE of 92 koz (at 2.9 g/t Au).

Six (6) RC holes and seven (7) diamond-tail holes from drilling of Windinne Well earlier this year were previously released on 14 August 2025. Warriedar has now received the assay results for the single outstanding diamond-tail drillhole of that program.

Drillhole WWRC179 targeted the depth extension of the Windinne Well central mineralisation returning:

- **2.6m @ 2.06 g/t Au from 324.6m;** and
- **3.15m @ 1.69 g/t Au from 345.85m**

These results were consistent with historical drilling within that localised area (refer to Figures 6 and 7).

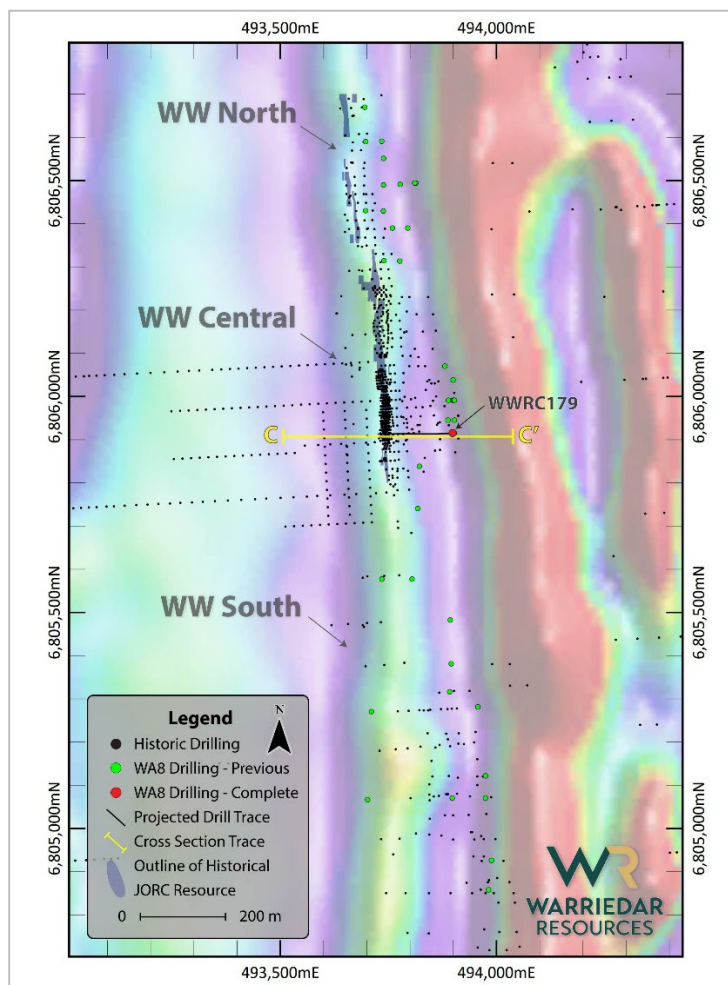


Figure 6: Plan view of Windinne Well showing the location of the cross-section C-C' in Figure 7, and the location of reported drillhole WWRC179.

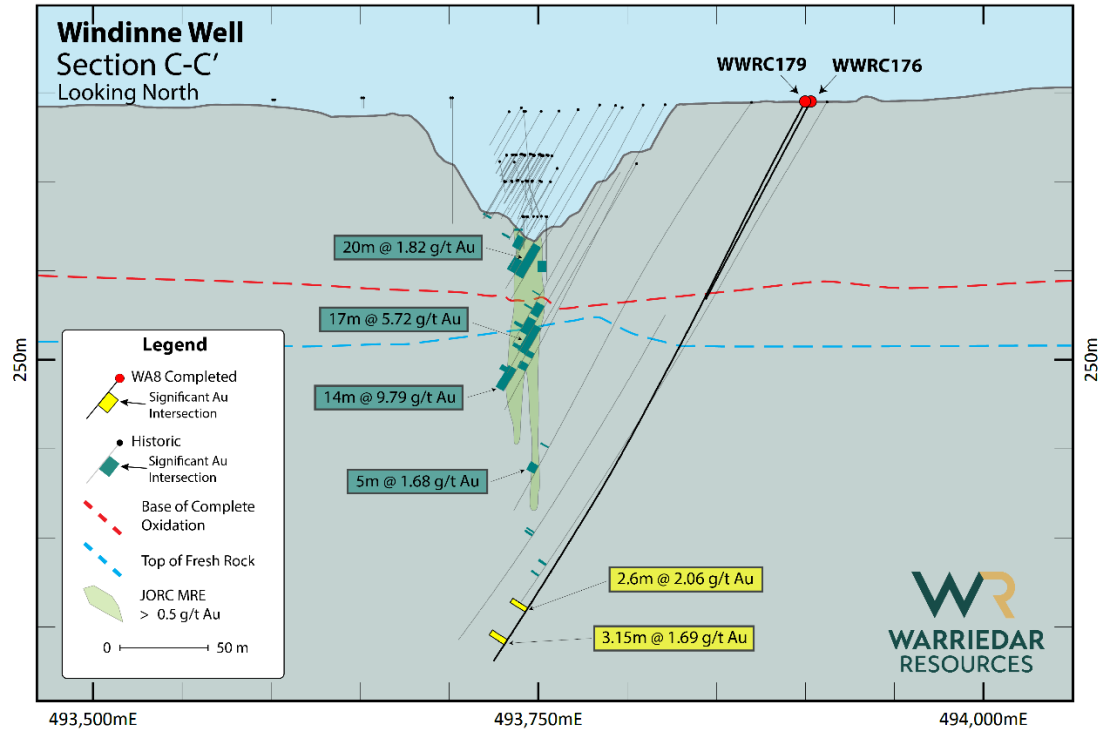


Figure 7: Section C-C' highlighting the intersection from WWRC179, relative to the existing drilling and MRE outline, see Figure 6 for location.

This announcement has been authorised for release by: Amanda Buckingham, Managing Director.

CONTACT:

Investors

+61 8 9481 0389

info@warriedarresources.com.au

Media

Michael Vaughan (Fivemark Partners)

+61 422 602 720

Competent Person Statement

The information in this report that relates to exploration results is based on information compiled by Mr Peng Sha. Mr Sha is an employee of Warriedar and a member of the Australasian Institute of Mining and Metallurgy and has sufficient experience of relevance to the styles of mineralisation and types of deposits under consideration, and to the activities undertaken, to qualify as a Competent Person as defined in the 2012 Edition of the Joint Ore Reserves Committee (JORC) Australasian Code for Reporting of Exploration Results, Mineral Resources and Ore Reserves.

Mr Sha consents to the inclusion in this report of the matters based on his information in the form and context in which it appears.

Gold equivalent (AuEq) calculation methodology

Warriedar considers that both gold and antimony included in the gold equivalent calculation (AuEq) have reasonable potential to be recovered at Ricciardo, given current geochemical understanding, geologically analogous mining operations and historical resource estimation.

For the purposes of its AuEq calculation methodology, Warriedar considers it appropriate to adopt the gold and antimony prices utilised for Larvotto Resources' (ASX: LRV) Hillgrove Gold-Antimony Project Pre-Feasibility Study (being US\$2,200/oz gold and US\$15,000/t antimony) (refer LRV ASX release dated 5 August 2024).

An assumed mineral recovery of 90% has been applied in the formula after reviewing the recoveries of typical antimony projects in Australia including Hillgrove and Costerfield 1. Expected recoveries will be updated once sufficient data has been obtained from future metallurgical study.

These assumptions result in a chosen AuEq calculation formula for Ricciardo of:

$$AuEq (g/t) = Au (g/t) + 2.12 \times Sb (\%)$$

This formula is deemed appropriate for use in the initial exploration targeting of gold-antimony mineralisation at Ricciardo and is the same as that used for initial reporting of results at Ricciardo, refer ASX Release 1 October 2024.

In Warriedar's opinion all the elements included in the metal equivalents calculation have reasonable potential to be recovered and sold.

¹ refer Mandalay Resources - Costerfield Property NI 43-101 Technical Report dated 25 March 2022 and LRV ASX release dated 5 August 2024.

Table 1: Collar table for drilled holes where assay results are fully or partially received (Ricciardo and Windinne Well).

Hole ID	Type	Hole Depth (m)	East MGA50	North MGA50	RL MGA50	Azimuth	Dip	Sample Status
RDRC072	RCD	233.93	495091	6803346	357	90.5	-60.6	Assays Fully Received
RDRC073	RCD	278.5	495069	6803326	363	90.0	-60.3	Assays Fully Received
RDRC074	RCD	227.7	495132	6803250	358	90.4	-75.3	Assays Fully Received
RDRC075	RC	134	495152	6803346	357	87.9	-50.5	Partial Assays Received
RDRC076	RCD	188.5	495100	6803303	358	96.3	-58.3	Assays Fully Received
RDRC077	RCD	252	495063	6803151	357	88.9	-59.8	Assays Fully Received
RDRC078	RCD	336.1	495042	6803151	357	89.0	-65.8	Partial Assays Received
RDRC079	RCD	410.8	494950	6802969	357	85.5	-62.6	Partial Assays Received
RDRC080	RCD	540.2	494901	6802968	357	87.4	-69.4	Partial Assays Received
RDRC081	RCD	243.1	495000	6802925	358	87.9	-60.4	Partial Assays Received
RDRC082	RCD	281.8	494975	6802925	358	87.5	-60.7	Partial Assays Received
RDRC083	RCD	381.04	494950	6802925	358	87.6	-61.3	Partial Assays Received
RDRC084	RCD	180(RC)	494925	6802925	358	89.0	-60.0	RC Fully Received Diamond Tail undrilled
RDRC085	RCD	459	494875	6802925	358	90.0	-60.7	Partial Assays Received
RDRC086	RCD	190(RC)	494816	6802950	357	89.0	-60.0	RC Fully Received Diamond Tail undrilled
RDRC087	RCD	492	494825	6802928	358	89.4	-60.8	Partial Assays Received
RDRC088	RCD	200	494996	6802820	358	89.2	-60.7	Partial Assays Received
RDRC089	RCD	240	494970	6802820	358	89.0	-60.0	Partial Assays Received
RDRC090	RCD	273	494944	6802820	358	88.3	-61.0	Partial Assays Received
RDRC091	RCD	180(RC)	494919	6802820	358	89.0	-60.0	RC Fully Received Diamond Tail undrilled
RDRC092	RCD	360	494865	6802820	358	90.0	-60.6	Partial Assays Received
RDRC093	RCD	148	494815	6802820	358	89.0	-60.0	Partial Assays Received
RDRC094	RCD	237.11	494966	6802720	358	89.2	-60.4	Partial Assays Received
RDRC095	RCD	320	494848	6802720	358	89.0	-60.0	Partial Assays Received
RDRC096	RCD	236.18	494992	6802770	358	87.8	-66.5	Partial Assays Received
RDRC097	RCD	285	494978	6802770	358	89.5	-70.4	Partial Assays Received
RDRC098	RCD	290.5	494957	6802770	358	88.3	-70.9	Partial Assays Received
RDRC099	RCD	315.1	495062	6803200	357	88.4	-66.5	Partial Assays Received
RDRC100	RCD	288.1	495066	6803200	357	87.3	-60.6	Partial Assays Received
RDRC101	RCD	246.1	495051	6803076	358	90.0	-58.2	Partial Assays Received
RDRC102	RCD	429.11	495030	6803076	357	90.0	-66.2	Partial Assays Received
RDRC103	RCD	423.7	495032	6803022	357	88.0	-69.4	Partial Assays Received
RDRC104	RCD	329.9	495038	6803022	358	84.3	-63.2	Partial Assays Received
RDRC105	RCD	251.9	495025	6802971	358	85.4	-60.5	Partial Assays Received
RDRC106	RCD	164.9	495065	6802950	358	88.8	-60.5	Partial Assays Received
RDRC107	RCD	171	495076	6802920	358	87.5	-60.9	Partial Assays Received
RDRC108	RCD	100(RC)	495050	6802920	358	89.0	-60.0	RC Fully Received Diamond Tail undrilled
RDRC109	RCD	197.7	495050	6802920	358	90.0	-60.8	Partial Assays Received
RDRC110	RC	120	495066	6802847	358	89.0	-60.0	Partial Assays Received

Hole ID	Type	Hole Depth (m)	East MGA50	North MGA50	RL MGA50	Azimuth	Dip	Sample Status
RDRC111	RCD	276	494966	6802871	358	89.6	-65.1	Partial Assays Received
RDRC112	RCD	392.95	494891	6802872	357	90.6	-65.8	Partial Assays Received
RDRC113	RCD	569.8	494776	6802872	357	89.2	-60.3	Partial Assays Received
RDRC114	RCD	251.9	494948	6802669	358	89.7	-60.9	Partial Assays Received
RDRC115	RCD	246	494948	6802669	358	91.7	-60.7	Partial Assays Received
RDRC116	RCD	197.8	495007	6802520	359	89.8	-50.7	Partial Assays Received
RDRC117	RCD	233.9	494967	6802520	359	89.9	-57.6	Partial Assays Received
RDRC118	RCD	330	494870	6802520	358	88.0	-58.5	Partial Assays Received
RDRC119	RCD	219.9	494989	6802470	359	89.9	-57.8	Partial Assays Received
RDRC120	RCD	286.3	494921	6802470	359	90.5	-57.8	Partial Assays Received
RDRC121	RCD	400	494796	6802470	359	89.0	-57.0	Partial Assays Received
WWRC179	RCD	360	493900	6805915	395	264.9	-62.6	Assays Fully Received

Table 2: Significant intercepts table of Ricciardo assay drill intersections using a 0.5 g/t AuEq cut-off, with a minimum width of 0.2 meters and a maximum of 2 meters of consecutive internal waste. Significant intercepts table of Windinne assay drill intersections using a 0.5 g/t Au cut-off, with a minimum width of 0.2 meters and a maximum of 2 meters of consecutive internal waste.

Prospect	Hole ID	From (m)	To (m)	Interval (m)	Au g/t	Sb %	AuEq g/t	Sample
Ricciardo	RDRC072	54.0	55.0	1.0	0.63	0.00	0.63	CHIPS
Ricciardo	RDRC072	182.7	184.3	1.6	1.50	0.02	1.54	CORE
Ricciardo	RDRC073	198.0	201.0	3.0	1.12	0.02	1.16	CORE
Ricciardo	RDRC073	211.0	220.0	9.0	0.85	0.05	0.95	CORE
Ricciardo	RDRC073	225.0	226.0	1.0	3.64	0.01	3.65	CORE
Ricciardo	RDRC073	229.0	230.0	1.0	0.71	0.00	0.72	CORE
Ricciardo	RDRC074	36.0	40.0	4.0	0.51	0.00	0.52	COMP
Ricciardo	RDRC074	75.0	76.0	1.0	1.28	0.02	1.31	CORE
Ricciardo	RDRC074	83.0	88.0	5.0	2.52	0.03	2.59	CORE
Ricciardo	RDRC074	122.0	148.0	26.0	0.35	0.18	0.74	CORE
Ricciardo	RDRC074	152.0	164.0	12.0	1.20	0.11	1.43	CORE
Ricciardo	RDRC074	168.0	176.0	8.0	1.49	0.02	1.53	CORE
Ricciardo	RDRC074	182.0	207.0	25.0	7.43	0.05	7.54	CORE
Ricciardo	RDRC075	56.0	60.0	4.0	0.93	0.03	1.00	CHIPS
Ricciardo	RDRC075	75.0	76.0	1.0	0.47	0.03	0.53	CHIPS
Ricciardo	RDRC075	97.0	99.0	2.0	0.70	0.01	0.72	CHIPS
Ricciardo	RDRC075	102.0	103.0	1.0	0.52	0.02	0.56	CHIPS
Ricciardo	RDRC075	111.0	122.0	11.0	0.84	0.01	0.86	CHIPS
Ricciardo	RDRC075	127.0	128.0	1.0	0.62	0.01	0.63	CHIPS
Ricciardo	RDRC076	92.2	93.2	1.0	0.63	0.00	0.64	CHIPS
Ricciardo	RDRC076	139.0	141.0	2.0	0.11	0.20	0.53	CORE
Ricciardo	RDRC076	159.0	161.0	2.0	0.34	0.13	0.61	CORE
Ricciardo	RDRC076	165.0	168.0	3.0	0.57	0.05	0.68	CORE
Ricciardo	RDRC077	29.3	31.3	2.0	1.56	0.01	1.58	CHIPS
Ricciardo	RDRC077	170.0	202.0	32.0	4.64	0.33	5.34	CORE
Ricciardo	RDRC077	214.0	216.0	2.0	0.80	0.00	0.81	CORE
Ricciardo	RDRC079	141.6	142.6	1.0	0.49	0.02	0.54	CHIPS
Ricciardo	RDRC079	186.3	187.0	0.7	0.10	0.24	0.61	CORE

Prospect	Hole ID	From (m)	To (m)	Interval (m)	Au g/t	Sb %	AuEq g/t	Sample
Ricciardo	RDRC079	193.0	226.0	33.0	2.05	1.52	5.29	CORE
Ricciardo	RDRC079	229.0	237.0	8.0	1.78	0.02	1.82	CORE
Ricciardo	RDRC079	240.6	258.0	17.4	1.18	0.06	1.31	CORE
Ricciardo	RDRC079	264.0	273.0	9.0	0.38	0.14	0.68	CORE
Ricciardo	RDRC079	276.0	277.0	1.0	0.17	0.22	0.63	CORE
Ricciardo	RDRC079	280.0	297.0	17.0	1.18	0.05	1.29	CORE
Ricciardo	RDRC079	301.0	310.0	9.0	0.52	0.26	1.07	CORE
Ricciardo	RDRC082	86.5	87.5	1.0	3.86	0.00	3.87	CHIPS
Ricciardo	RDRC082	116.5	117.5	1.0	2.07	0.03	2.12	CHIPS
Ricciardo	RDRC082	121.5	122.5	1.0	0.77	0.01	0.80	CHIPS
Ricciardo	RDRC083	198.0	199.0	1.0	0.03	0.28	0.61	CORE
Ricciardo	RDRC083	205.0	219.1	14.1	0.55	0.59	1.80	CORE
Ricciardo	RDRC083	222.0	228.0	6.0	0.19	0.44	1.12	CORE
Ricciardo	RDRC083	231.0	241.0	10.0	0.50	0.19	0.89	CORE
Ricciardo	RDRC083	249.0	256.0	7.0	0.44	0.36	1.19	CORE
Ricciardo	RDRC083	268.0	273.0	5.0	0.62	0.11	0.86	CORE
Ricciardo	RDRC083	275.4	281.0	5.6	1.34	0.11	1.57	CORE
Ricciardo	RDRC083	290.0	290.5	0.5	1.74	0.01	1.76	CORE
Ricciardo	RDRC083	295.0	298.9	3.9	1.76	0.07	1.90	CORE
Ricciardo	RDRC084	84.0	85.0	1.0	0.64	0.01	0.65	CHIPS
Ricciardo	RDRC085	135.6	136.6	1.0	2.70	0.00	2.71	CHIPS
Ricciardo	RDRC088	62.0	64.0	2.0	1.36	0.00	1.36	CHIPS
Ricciardo	RDRC088	74.0	79.0	5.0	0.88	0.00	0.88	CHIPS
Ricciardo	RDRC089	98.0	99.0	1.0	0.74	0.00	0.75	CHIPS
Ricciardo	RDRC089	104.0	105.0	1.0	0.59	0.00	0.60	CHIPS
Ricciardo	RDRC091	170.0	171.0	1.0	0.59	0.02	0.65	CHIPS
Ricciardo	RDRC092	117.0	118.0	1.0	0.63	0.00	0.63	CHIPS
Ricciardo	RDRC094	100.0	102.0	2.0	0.71	0.01	0.72	CHIPS
Ricciardo	RDRC096	91.0	92.0	1.0	2.25	0.00	2.26	CHIPS
Ricciardo	RDRC097	104.0	108.0	4.0	0.67	0.00	0.68	COMP
Ricciardo	RDRC098	128.0	136.0	8.0	0.59	0.00	0.59	COMP
Ricciardo	RDRC101	62.0	70.0	8.0	1.38	0.11	1.60	CHIPS
Ricciardo	RDRC101	77.0	78.0	1.0	0.52	0.15	0.84	CHIPS
Ricciardo	RDRC102	84.7	98.7	14.0	0.49	0.17	0.85	CHIPS
Ricciardo	RDRC102	103.7	105.7	2.0	0.56	0.06	0.68	CHIPS
Ricciardo	RDRC104	82.9	83.9	1.0	0.01	0.26	0.56	CHIPS
Ricciardo	RDRC106	54.0	57.0	3.0	0.84	0.02	0.88	CHIPS
Ricciardo	RDRC107	52.6	53.6	1.0	2.56	0.01	2.58	CHIPS
Ricciardo	RDRC118	96.0	100.0	4.0	0.93	0.00	0.93	COMP
Windinne	WWRC179	324.6	327.2	2.6	2.06	0.00	2.06	CORE
Windinne	WWRC179	345.9	349.0	3.1	1.69	0.00	1.69	CORE

For personal use only

Appendix 1: Mineral Resources

Golden Range and Fields Find Projects, Western Australia

Golden Range Mineral Resources (JORC 2012) - May 2025												
Deposit	Measured			Indicated			Inferred			Total Resources		
	kt	g/t Au	kOz Au	kt	g/t Au	kOz Au	kt	g/t Au	kOz Au	kt	g/t Au	kOz Au/AuEq
Austin	-	-	-	222	1.3	9.1	212	1.5	10.1	434	1.4	19.2
Rothschild	-	-	-	-	-	-	693	1.4	31.3	693	1.4	31.3
M1	55	1.8	3.3	131	2.5	10.4	107	4	13.7	294	2.9	27.4
Riley	-	-	-	32	3.1	3.2	81	2.4	6.3	113	2.6	9.5
Windinne Well	16	2.33	1.2	636	3.5	71	322	1.9	19.8	975	2.9	91.7
Bugeye	14	1.56	0.7	658	1.2	24.5	646	1.1	22.8	1,319	1.1	48.1
Monaco-Sprite	52	1.44	2.4	1,481	1.2	57.2	419	1.1	14.2	1,954	1.2	74
Mugs Luck-Keronima	68	2.29	5	295	1.6	15	350	1.6	18.5	713	1.7	38.6
Ricciardo Au Resources	2692	1.72	149	4793	1.5	227	12,301	1.7	660	19,786	1.6	1036
Ricciardo Sb Resources	-	-	-	4252	2.4 AuEq (0.5% Sb)	324 AuEq 21,085t Sb)	7,273	2.4 AuEq (0.5% Sb)	601 AuEq (39,169 t Sb)	12,197	2.4 AuEq (0.5% Sb)	925 AuEq (60,254t Sb)
Grand Total										30,990	2.31	2,300.8

The information in this report that relates to estimation, depletion and reporting of the Golden Range and Fields Find Mineral Resources for is based on and fairly represents information and supporting documentation compiled by Dr Bielin Shi who is a Fellow (CP) of The Australasian Institute of Mining and Metallurgy. Dr Shi is an independent consultant geologist and has sufficient experience relevant to the style of mineralisation and type of deposits under consideration and to the activity which he is undertaking to qualify as a Competent Person as defined in the 2012 Edition of the Australasian Code for Reporting of Exploration Results, Mineral Resources and Ore Reserves.

Dr. Shi consents to the inclusion in this report of the matters based on the information in the form and context in which it appears.

The information in this report (Ricciardo Project) that relates to the Estimation and Reporting of the Ricciardo Mineral Resources is based on information compiled by Peter Handley who is a Competent Person and Member of the Australasian Institute of Mining and Metallurgy (AusIMM). Mr Handley is a full-time employee of Measured Group Pty Ltd. Mr Handley has sufficient experience that is relevant to the style of mineralisation and type of deposit under consideration and to the activity being undertaken to qualify as a Competent Person as defined in the 2012 Edition of the "Australasian Code for Reporting of Exploration Results, Mineral Resources and Ore Reserves".

Mr Handley consents to the inclusion in this report of the matters based on his information in the form and context in which it appears.

The information is extracted from the ASX Releases entitled "Major Gold Project Acquisition" created on 22nd November 2022; and; "Ricciardo Delivers Australia's Largest Open-Pit Antimony Resource" created on 5th May 2025. Both releases are available to view on www.warriedarresources.com (Under ASX Announcements). The company confirms that it is not aware of any new information or data that materially affects the information included in the original market announcements and all material assumptions and technical parameters underpinning the estimates in the relevant market announcements continue to apply and have not materially changed. The company confirms that the form and context in which the Competent Person's findings are presented have not been materially modified from the original market announcement.

Big Springs Project, Nevada

Big Springs Mineral Resources (JORC 2012) - November 2022												
Deposit	Measured			Indicated			Inferred			TOTAL		
	kt	g/t Au	koz	kt	g/t Au	koz	kt	g/t Au	koz	kt	g/t Au	koz
North Sammy	345	6.6	73.4	698	3.1	70.6	508	2.4	39.1	1,552	3.7	183.1
North Sammy Contact	-	-	-	439	2.2	30.9	977	1.4	45	1,416	1.7	75.8
South Sammy	513	3.4	55.5	4,112	2.0	260.7	1,376	1.5	64.9	6,001	2.0	381.2
Beadles Creek	-	-	-	753	2.6	63.9	2,694	1.9	164.5	3,448	2.1	228.4
Mac Ridge	-	-	-	-	-	-	1,887	1.3	81.1	1,887	1.3	81.1
Dorsey Creek	-	-	-	-	-	-	325	1.8	18.3	325	1.8	18.3
Brien's Fault	-	-	-	-	-	-	864	1.7	46.2	864	1.7	46.2
Sub-Totals	858	4.7	128.9	6,002	2.2	426.1	8,631	1.7	459.1	15,491	2.0	1,014.1

Note: Appropriate rounding applied

The information in the release that relates to the Estimation and Reporting of the Big Springs Mineral Resources has been compiled and reviewed by Ms Elizabeth Haren of Haren Consulting Pty Ltd who is an independent consultant to Warriedar Resources Ltd and is a current Fellow and Chartered Professional of the Australasian Institute of Mining and Metallurgy and Member of the Australian Institute of Geoscientists. Ms Haren has sufficient experience, which is relevant to the style of mineralisation and types of deposits under consideration and to the activities undertaken, to qualify as a Competent Person as defined in the 2012 Edition of the "Australasian Code of Reporting of Exploration Results, Mineral Resources and Ore Reserves (The JORC Code).

Ms Haren consents to the inclusion in this report of the matters based on her information in the form and context in which it appears.

The information is extracted from the ASX Release entitled "Big Springs M&I Resource Increases 21%" created on 15th November 2022 and is available to view on www.warriedarresources.com (Under ASX Announcements). The company confirms that it is not aware of any new information or data that materially affects the information included in the original market announcement and all material assumptions and technical parameters underpinning the estimates in the relevant market announcement continue to apply and have not materially changed. The company confirms that the form and context in which the Competent Person's findings are presented have not been materially modified from the original market announcement.

Appendix 2: JORC CODE (2012) TABLE 1

Section 1 Sampling Techniques and Data (Criteria in this section apply to all succeeding sections)

Criteria	JORC Code explanation	Commentary
Sampling techniques	<ul style="list-style-type: none"> Nature and quality of sampling (e.g. cut channels, random chips, or specific specialised industry standard measurement tools appropriate to the minerals under investigation, such as down hole gamma sondes, or handheld XRF instruments, etc.). These examples should not be taken as limiting the broad meaning of sampling. Include reference to measures taken to ensure sample representivity and the appropriate calibration of any measurement tools or systems used. Aspects of the determination of mineralisation that are Material to the Public Report. In cases where 'industry standard' work has been done this would be relatively simple (e.g. 'reverse circulation drilling was used to obtain 1 m samples from which 3 kg was pulverized to produce a 30 g charge for fire assay'). In other cases more explanation may be required, such as where there is coarse gold that has inherent sampling problems. Unusual commodities or mineralisation types (e.g. submarine nodules) may warrant disclosure of detailed information. 	<ul style="list-style-type: none"> For the Reverse Circulation (RC) drilling program, 1m RC drill samples were collected through a rig-mounted cone splitter designed to capture a one metre sample with optimum 2kg to 4kg sample weight. Once drilling reached fresh rock a fine spray of water was used to suppress dust and limit the loss of fines through the cyclone chimney. Compositing RC samples in lengths of 4 m was undertaken from host rocks via combining 'Spear' samples of the 1m intervals to generate a 2 kg (average) sample. Diamond Core samples were taken, generally on 1 m intervals or on geological boundaries where appropriate. For 1m RC samples, field duplicates were collected at an approximate ratio of 1:50 and collected at the same time as the original sample through the chute of the cone splitter. Certified reference materials (CRMs) were inserted at an approximate ratio of 1:15 and blanks were inserted at an approximate ratio of 1:25. Grade range of the certified samples were selected based on grade population and economic grade ranges. For composite RC samples, field duplicates were made via combining 'Spear' samples. Duplicates, CRMs and blanks were inserted at an approximate ratio of 1:50. Samples were sent to the lab where they were pulverised to produce a 30g or 25g sample for fire assay.
Drilling techniques	<ul style="list-style-type: none"> Drill type (e.g. core, reverse circulation, open-hole hammer, rotary air blast, auger, Bangka, sonic, etc.) and details (e.g. core diameter, triple or standard tube, depth of diamond tails, face-sampling bit or other type, whether core is orientated and if so, by what method, etc.). 	<ul style="list-style-type: none"> Challenge Drilling drill rig was used for the RC holes and RC pre-collar. Hole diameter was 140 mm. Diamond drilling was also undertaken by Terra Drilling rig using HQ. Core was orientated using Axis Champ Ori digital core orientation tool.
Drill sample recovery	<ul style="list-style-type: none"> Method of recording and assessing core and chip sample recoveries and results assessed. Measures taken to maximize sample recovery and ensure representative nature of the samples. Whether a relationship exists between sample recovery and grade and whether sample bias may have occurred due to preferential loss/gain of fine/coarse material. 	<ul style="list-style-type: none"> For RC each metre interval, sample recovery, moisture and condition were recorded systematically. Most samples were of good quality with ground water having minimal effect on sample quality or recovery. The diamond drill core recovered is physically measured by tape measure and the length recovered is recorded for every run. There is no obvious relationship between sample recovery and grade. During the RC sample collection process, the sample sizes were visually inspected to assess drill recoveries.
Logging	<ul style="list-style-type: none"> Whether core and chip samples have been geologically and geotechnically logged to a level of detail to support appropriate Mineral Resource estimation, mining studies and metallurgical studies. Whether logging is qualitative or quantitative in nature. Core (or costean, channel, etc.) photography. The total length and percentage of the relevant intersections logged. 	<ul style="list-style-type: none"> RC chips were washed and stored in chip trays in 1 m intervals for the entire length of each hole. Chip trays were stored on site in a sealed container. RC chips and diamond core were visually inspected and logged by an onsite geologist to record lithology, alteration, mineralisation, veining, structure, sample quality etc. Logging and sampling have been carried out to industry standards to support a Mineral Resource Estimate. Drill hole logs are recorded in LogChief and uploaded into database (DataShed), and output further validated in 3D software such as Surpac and Micromine. Corrections were then re-submitted to database manager and uploaded to DataShed.

Criteria	JORC Code explanation	Commentary
Sub-sampling Techniques and sample preparation	<ul style="list-style-type: none"> • <i>If core, whether cut or sawn and whether quarter, half or all core taken.</i> • <i>If non-core, whether riffled, tube sampled, rotary split, etc. and whether sampled wet or dry.</i> • <i>For all sample types, the nature, quality and appropriateness of the sample preparation technique.</i> • <i>Quality control procedures adopted for all sub-sampling stages to maximise representivity of samples.</i> • <i>Measures taken to ensure that the sampling is representative of the in situ material collected, including for instance results for field duplicate/second-half sampling.</i> • <i>Whether sample sizes are appropriate to the grain size of the material being sampled.</i> 	<ul style="list-style-type: none"> • RC samples were split from dry 1 m bulk samples via a splitter directly from the cyclone to obtain a sample mass of 2-3kg. • Composite RC samples were generated by taking a spear sample from each 1m green bag to make rough 2 kg sample. • Half diamond core samples were taken, generally on 1 m intervals or on geological boundaries where appropriate. • Samples including RC chips and diamond core were sorted and dried at 105 °C in client packaging or trays. • All samples weighed and recorded when sample sorting. • Pulverize 3kg to nom 85% <75um. All samples were analysed for Au using fire assay. • Sample preparation technique is appropriate for Golden Range projects and is standard industry practice for gold deposits.
Quality of assay data and Laboratory tests	<ul style="list-style-type: none"> • <i>The nature, quality and appropriateness of the assaying and laboratory procedures used and whether the technique is considered partial or total.</i> • <i>For geophysical tools, spectrometers, handheld XRF instruments, etc., the parameters used in determining the analysis including instrument make and model, reading times, calibrations factors applied and their derivation, etc.</i> • <i>Nature of quality control procedures adopted (e.g. standards, blanks, duplicates, external laboratory checks) and whether acceptable levels of accuracy (i.e. lack of bias) and precision have been established.</i> 	<ul style="list-style-type: none"> • The drilling samples were submitted to Jinning Testing & Inspection's Perth laboratory. Samples were assayed by 30g fire assay ICP-OES finish from Jinning (FA30I). The multi element assay were completed by mixed acid digest ICP-OES finish (MADI33). The high-grade Sb samples (>3.5%) are reanalysed by fusion method to obtain near total digestion. • Field duplicates, blanks and CRMs were selected and placed into sample stream analysed using the same methods. • For 1m RC sample sequence, field duplicates were collected at a ratio of 1:50 and collected at the same time as the original sample through the cone splitter. CRMs were inserted at an approximate ratio of 1:15 and blanks were inserted at an approximate ratio of 1:25. • For composite RC samples, duplicates, CRMs and blanks were inserted at an approximate ratio of 1:50. • For diamond drilling, CRMs were inserted at an approximate ratio of 1:15 and blanks were inserted at an approximate ratio of 1:25. Core duplicates were collected at a ratio of 1:50. • No portable XRF analyses result has been used in this release.
Verification of sampling and assaying	<ul style="list-style-type: none"> • <i>The verification of significant intersections by either independent or alternative company personnel.</i> • <i>The use of twinned holes.</i> • <i>Documentation of primary data, data entry procedures, data verification, data storage (physical and electronic) protocols.</i> • <i>Discuss any adjustment to assay data.</i> 	<ul style="list-style-type: none"> • Logging and sampling were recorded on digital logging sheet and digital sample sheet. Information was imported into DataShed database after data validation. File validation was also completed by geologist on the rig. Datashed was also applied for data verification and administration. • There were no twin holes drilled during the RC/diamond program. • All the sample intervals were visually verified using high quality photography, and significant intersections are verified by company personnel • Assay results received were plotted on section and were verified against neighbouring holes. QAQC data were monitored on a hole-by-hole basis. Any failure in company QAQC protocols resulted in follow up with the lab and occasional repeat of assay as necessary. • The performance of company standards and blanks were reviewed for each batch of assay results, immediately after results were reported, and any QC fails were investigated and where necessary re-assays were requested, or re-sampling was performed. • QAQC analysis and reporting is undertaken by the Geology Database Manager or his/her assistants, who use QAQC Reporter (QAQC-R) by Maxgeo to compare Standard, Blank, and Duplicate Assay results to the target/expected values. The tool produces graphical and numerical output report(s) for comparisons. All assay results can be accessed in DataShed database and interrogated via QAQC Reporter (QAQC-R)

Criteria	JORC Code explanation	Commentary
		<ul style="list-style-type: none"> Standard Operating Procedure SOP WAR-MINE-GEO-0002 WAR QUALITY ASSURANCE AND QUALITY CONTROL PROCEDURE is used to assign thresholds for pass, further investigation, or immediate fail, and has flowcharts and accept/reject rules that are used to determine the appropriate level and type of investigation and resolution required. In cases of re-assays, after a re-assay batch was checked against the original results and passed QAQC, the re-assays were imported replacing the failed results. There are no other adjustments to any assay data uploaded to the DataShed database.
Location of data points	<ul style="list-style-type: none"> Accuracy and quality of surveys used to locate drill holes (collar and down-hole surveys), trenches, mine workings and other locations used in Mineral Resource estimation. Specification of the grid system used. Quality and adequacy of topographic control. 	<ul style="list-style-type: none"> The collection of data including initial coordinates, drill hole ID and type, geological logs, sampling, and assay data were controlled to maintain integrity of the database. The data collection and validation processes were multi-staged, requiring input from geology technicians, geologists, surveying staff, and assay laboratories, however the assigned supervising geologist was responsible for the verification of surveying, sampling, and assaying data for given holes on the drilling programs. Drill hole collars were initially pegged by Warriedar employees using handheld GPS. The holes would be picked-up by a licenced surveyor using DGPS equipment after drilling completed. The surveyed coordinates are checked against the planned locations prior to upload to the database, with any noticeable discrepancies investigated and resolved. During drilling, most holes underwent gyroscopic down hole surveys on 30m increments. Upon completion of the hole a continuous gyroscopic survey with readings taken automatically at 5m or 10m increments inbound and outbound. Each survey was carefully checked to be in bounds of acceptable tolerance. Data was recorded digitally by the drilling contractors using the proprietary software and hardware. The survey data was uploaded by the drilling contractors to the Axis hub website as digital files which were then downloaded as .csv files before QA/QC and further processing and then auto uploaded into Warriedars database hosted by maxgeo. Challenge Drilling and Terra Drilling utilised the Axis Champ North Seeking Gyro tool. Specifications for the Axis Champ North seeking Gyro tool claim an Azimuth Accuracy of +/- 0.75 degrees (Latitude dependent), and an inclination of +/- 0.15 degrees.
Data spacing and distribution	<ul style="list-style-type: none"> Data spacing for reporting of Exploration Results. Whether the data spacing and distribution is sufficient to establish the degree of geological and grade continuity appropriate for the Mineral Resource and Ore Reserve estimation procedure(s) and classifications applied. Whether sample compositing has been applied. 	<ul style="list-style-type: none"> At Ricciardo and Windinne Well exploration drilling has been drilled on a grid pattern. Spacing is considered appropriate for this style of mineralisation and stage of exploration. Hole spacing at Ricciardo and Windinne Well were sufficient for resource estimation. RC Samples have been composited to 4m lengths outside the proposed main target zones.
Orientation of data in relation to geological structure	<ul style="list-style-type: none"> Whether the orientation of sampling achieves unbiased sampling of possible structures and the extent to which this is known, considering the deposit type. If the relationship between the drilling orientation and the orientation of key mineralised structures is considered to have introduced a sampling bias, this should be assessed and reported if material. 	<ul style="list-style-type: none"> WA8 and historical drilling are mainly orientated perpendicular to the main structural trend of the area; however, there are multiple mineralisation events and there is insufficient data to confirm the geological model. No sampling bias is considered to have been introduced by the existing sampling orientation.
Sample security	<ul style="list-style-type: none"> The measures taken to ensure sample security. 	<ul style="list-style-type: none"> Calico sample bags are tied, grouped by sample ID placed into

Criteria	JORC Code explanation	Commentary
		<p>polyweave sacks and cable tied. These sacks were then appropriately grouped, placed within larger in labelled bulka bags for ease of transport by company personnel or third-party transport contractor. Each dispatch was itemised and emailed to the laboratory for reconciliation upon arrival.</p> <ul style="list-style-type: none"> A unique dispatch number is used for each batch of samples sent to the assaying laboratory for tracking purposes and the laboratory acknowledges receipt of each sample dispatch by email. All discrepancies identified on receipt of the samples by the assaying laboratory were investigated and corrected.
Audits or reviews	<ul style="list-style-type: none"> The results of any audits or reviews of sampling techniques and data. 	<ul style="list-style-type: none"> The competent person for exploration results has visited the project where sampling has taken place and has reviewed and confirmed the sampling procedures.

Section 2 Reporting of Exploration Results (Criteria listed in the preceding section also apply to this section.)

Criteria	JORC Code explanation	Commentary
Mineral tenement and land tenure status	<ul style="list-style-type: none"> Type, reference name/number, location and ownership including agreements or material issues with third parties such as joint ventures, partnerships, overriding royalties, native title interests, historical sites, wilderness or national park and environmental settings. The security of the tenure held at the time of reporting along with any known impediments to obtaining a licence to operate in the area. 	<ul style="list-style-type: none"> There are 63 tenements associated with Golden Range and Fields Find. Among them, 19 are mining leases, 26 are exploration licences and 2 are in prospecting licences. The rest of the tenements are general purpose leases and miscellaneous licences. Third party rights include: 1) Gindalbie iron ore rights; 2) Fenix Resources' iron ore rights for the Shine project; 3) Messenger's Patch JV rights on M 59/357 and E 59/852; 4) Mt Gibson's iron ore and non-metalliferous dimension stone rights on Fields Find; 5) GoldEX Royalty to Anketell Pty Ltd for 0.75% of gold and other metals production from M 59/379 and M 59/380; 6) 2% NSR royalty on products produced from Fields Find tenements to Mt Gibson; 7) Royalty of A\$5 per oz of gold produced payable to the estate of Mr Gary Mason, limited to 50Koz produced from P 59/1343, which covers part of E 59/1268. 8) Minjar Gold royalty of A\$ 20 per oz of gold production from the tenements acquired from Minjar Gold, subject to a minimum received gold price within the relevant quarter of A\$2,000 per oz, with a cap of A\$18 million. Ricciardo is located on Mining leases M59/421-I and M59/458-I. Windinne Well is located on mining leases M59/219-I and M59/421-I. <u>Native Title and Heritage</u> The Mining Tenements are within the Widi Mob native title claim area. The Widi Mob claim was combined with the claims of three other groups (Southern Yamatji, Hutt River and Mullewa Wadjari) over areas to the west to form the Yamatji Nation native title claim. The native title claims of these groups was resolved in 2020 by the entry of those groups and the State into the Yamatji Nation Indigenous Land Use Agreement (ILUA). The ILUA recognised non-exclusive native title rights and interests in discrete, culturally significant parcels of land (<1% of the total claim area) and the creation of managed reserves and conservation areas jointly managed with DCBA. The Mining Tenements are not within these areas. Under the ILUA, the State agreed to pay compensation to the claimant groups for future acts and for the surrender of the

For personal use only

Criteria	JORC Code explanation	Commentary
		<p>balance of native title rights in the claim areas. This resolves native title claims over the areas of the Mining Tenements without the need for further agreements between the Company and claimant groups.</p> <ul style="list-style-type: none"> A search of the Aboriginal Heritage Inquiry System shows that there are no registered or lodged sites recorded in the areas of the Mining Tenements. The area of the Mining Tenements has been the subject of extensive heritage surveys in the past. Currently all the tenements are in good standing. There are no known impediments to obtaining licences to operate in all areas.
Exploration done by other parties	<ul style="list-style-type: none"> <i>Acknowledgment and appraisal of exploration by other parties.</i> 	<ul style="list-style-type: none"> Gold exploration at the region commenced in the 1980s. Normandy Exploration commenced the systematic exploration in late 1980s and 1990s. Project were acquired by Gindalbie Gold N.L. in December 1999. Golden Stallion Resources Pty Ltd acquired the whole project in March 2009. Shandong Tianye purchased 51% of Minjar (the operating company) in July 2009. Minjar became the wholly owned subsidiary of Tianye in 2010. The database, completed by multiple companies using a combination technic of Reserve Circulation (RC), diamond drilling (DD), aircore (AC), Auger and RAB. Most of the drill holes were completed during the period of 2001-2004 and 2013-2018 by Gindalbie and Minjar respectively. DC Mines Pty Ltd acquired Golden Range and the majority of Fields Find from Minjar Gold Pty Ltd in November 2022. Warriedar Resources Limited (then named Anova Metals Limited) acquired DC Mines in February 2023. A number of due diligence exercises and MRE updates occurred during the above transactions.
Geology	<ul style="list-style-type: none"> <i>Deposit type, geological setting and style of mineralisation.</i> 	<ul style="list-style-type: none"> In the Golden Range area, gold mineralisation is dominantly controlled by structures and lithologies. North trending shear zones and secondary structures are interpreted to be responsible for the hydrothermal activity that produced many of the region's gold deposits. Two major shear structures have been identified, the Mougooderra Shear Zone and the Chulaar Shear Zone; both striking approximately north and controlling the occurrence of gold deposits. Host lithology units for gold mineralisation are predominantly the intensely altered mafic to ultramafic units, BIF, and dolerite intrusions. Main mechanism for mineralisation is believed to be associated with: 1) Shear zones as a regional control for fluid; 2) dolerite intrusions to be reacted and mineralised with auriferous fluids; 3) BIF as a rheological and chemical control; 4) porphyry intrusions associated with secondary or tertiary brittle structures to host mineralisation. 3 main stages of mineralisation observed, including stage 1: nickel bearing gold mineralisation, stage 2 arsenic bearing gold mineralisation, and stage 3 antimony bearing gold-antimony mineralisation. Stage 2 mineralisation responsible for the most of the gold mineralisation and Stage 3 mineralisation occurred later but brought significant antimony into the system. In the Golden Range area, the most significant base metal deposit is Golden Grove, which consists of Gossan Hill, Scuddles, Flix and Flying Hill, The Gossan Hill deposit is a volcanic-hosted massive sulfide system within the Archean Golden Grove Formation of the Yilgarn Craton, WA. The mineralisation is hosted in Golden Grove formation, a ~550 m thick felsic volcanoclastic succession (tuffaceous sandstones, siltstones, breccias), deposited by subaqueous mass flows. Two main ore zones includes Lower Cu-

Criteria	JORC Code explanation	Commentary
		rich zone: pyrite-chalcopyrite-pyrrhotite, associated with massive magnetite lenses (up to 40 m thick) and Upper Zn-rich zone: massive sphalerite-pyrite with galena, tetrahedrite, minor Au-Ag phases.
Drill hole Information	<ul style="list-style-type: none"> A summary of all information material to the understanding of the exploration results including a tabulation of the following information for all Material drill holes: <ul style="list-style-type: none"> easting and northing of the drill hole collar elevation or RL (Reduced Level – elevation above sea level in metres) of the drill hole collar dip and azimuth of the hole down hole length and interception depth hole length. If the exclusion of this information is justified on the basis that the information is not Material and this exclusion does not detract from the understanding of the report, the Competent Person should clearly explain why this is the case. 	<ul style="list-style-type: none"> Table 1 and Table 2 of this release provides details of drill hole coordinates, orientations, length for all drill holes, and significant intercepts. All reported azimuths are corrected for magnetic declinations. Down hole length or hole depth is the distance measured along the drill hole trace from the surface. Intersection length is the thickness of an anomalous intersection measured along the drill hole trace.
Data aggregation methods	<ul style="list-style-type: none"> In reporting Exploration Results, weighting averaging techniques, maximum and/or minimum grade truncations (eg cutting of high grades) and cut-off grades are usually Material and should be stated. Where aggregate intercepts incorporate short lengths of high grade results and longer lengths of low grade results, the procedure used for such aggregation should be stated and some typical examples of such aggregations should be shown in detail. The assumptions used for any reporting of metal equivalent values should be clearly stated. 	<ul style="list-style-type: none"> Significant intercepts table of Ricciardo assay drill intersections using a 0.5 g/t AuEq cut-off, with a minimum width of 0.2 meters and a maximum of 2 meters of consecutive internal waste. Significant intercepts table of Windinne assay drill intersections using a 0.5 g/t Au cut-off, with a minimum width of 0.2 meters and a maximum of 2 meters of consecutive internal waste. No upper cuts have been applied. No aggregation methods have been applied for the chips. No upper cuts have been applied. No metal equivalent values were reported.
Relationship between mineralisation widths and intercept lengths	<ul style="list-style-type: none"> These relationships are particularly important in the reporting of Exploration Results. If the geometry of the mineralisation with respect to the drill hole angle is known, its nature should be reported. If it is not known and only the down hole lengths are reported, there should be a clear statement to this effect (eg 'down hole length, true width not known'). 	<ul style="list-style-type: none"> Gold mineralisation at Ricciardo dips about 70 degrees to the west. Drill holes in this release are orientated between -50 degree to -75 degree the east at Ricciardo. Gold mineralisation at Windinne Well is about vertical and strike north-south. The drill hole in this release is orientated the west with 62.6 degree dip at Windinne Well. The majority of the historical drill holes at Ricciardo were drilled as inclined holes with dipping angles close to -60 degree from multiple orientations; most of the drill holes are toward east. This is considered to be appropriate for the interpreted dip of the major mineralised structure and intrusions and creating minimal sampling bias. The majority of the historical drill holes at Windinne Well were drilled as inclined holes with dipping angles close to -60 degree from multiple orientations; most of the drill holes are toward the west. This is considered to be appropriate for the interpreted dip of the major mineralised structure and creating minimal sampling bias.
Diagrams	<ul style="list-style-type: none"> Appropriate maps and sections (with scales) and tabulations of intercepts should be included for any significant discovery being reported These should include, but not be limited to a plan view of drill hole collar locations and appropriate sectional views. 	<ul style="list-style-type: none"> Appropriate maps are included in the announcement
Balanced reporting	<ul style="list-style-type: none"> Where comprehensive reporting of all Exploration Results is not practicable, 	<ul style="list-style-type: none"> The accompanying document is considered to be a balanced report

Criteria	JORC Code explanation	Commentary
	<i>representative reporting of both low and high grades and/or widths should be practiced to avoid misleading reporting of Exploration Results.</i>	with a suitable cautionary note.
Other substantive exploration data	<ul style="list-style-type: none"> <i>Other exploration data, if meaningful and material, should be reported including (but not limited to): geological observations; geophysical survey results; geochemical survey results; bulk samples – size and method of treatment; metallurgical test results; bulk density, groundwater, geotechnical and rock characteristics; potential deleterious or contaminating substances.</i> 	<ul style="list-style-type: none"> No other material information or data to report.
Further work	<ul style="list-style-type: none"> <i>The nature and scale of planned further work (eg tests for lateral extensions or depth extensions or large-scale step-out drilling).</i> <i>Diagrams clearly highlighting the areas of possible extensions, including the main geological interpretations and future drilling areas, provided this information is not commercially sensitive.</i> 	<ul style="list-style-type: none"> Further work includes: (1) Further RC and diamond core drilling at Ricciardo for further MRE growth, metallurgical studies and selective MRE upgrade. (2) RC and diamond core drilling programs to extend the identified mineralisation along strike and toward depth of the deposits sitting on Mougooderra Shear and other paralleled shear structures.

For personal use only