

13 October 2025

High-Grade Gold and Silver Assays from Rock Chip Sampling at Shaib Marqan and Wadi Salamah - Saudi Arabia

- **Shaib Marqan Project (87 samples):** High-grade gold assays of 40.35 g/t Au, 9.62 g/t Au, 7.03 g/t Au and 5.72 g/t Au with a total of 18 samples recording grades of +1 g/t Au from quartz vein and wall rock outcrops.
- **Wadi Salamah (25 samples):** High-grade gold and silver assays of 10.66 g/t Au & 40.4 g/t Ag, 7.56 g/t Au & 19 g/t Ag, 5.50 g/t Au & 18 g/t Ag and 4.27 g/t Au & 38.9 g/t Ag from quartz veins within a shear sampled over 700 metres in strike.
- **Extensive artisanal workings and visible sulphides were observed in quartz veins and shear zones across both projects.**
- **Follow up exploration to commence with detailed magnetic survey to provide data for targeting drilling.**

Resource Minerals International Ltd (“RMI” or the “Company”) (ASX:RMI) is pleased to confirm the presence of high-grade gold and silver from a sampling program recently undertaken by its geologists at its two projects in Saudi Arabia, Shaib Marqan and Wadi Salamah, which cover a combined area of 190km².¹

RMI Executive Chairman, Asimwe Kabunga, said: *“These results confirm high-grade gold and silver mineralisation across meaningful strike lengths at both projects. With extensive outcrops, historical workings and visible mineralisation, we are confident these early results will underpin a maiden drilling program. RMI is well positioned as an early-mover ASX-listed explorer in Saudi Arabia’s rapidly expanding mining sector.”*

Project Locations

Both projects are granted Exploration Licences (“EL”) located in central Saudi Arabia. Shaib Marqan is situated around 240km south-west of Riyadh and easily accessible via sealed roads and minor unsealed roads. The EL area is 91.8km². Wadi Salamah is located approximately 320 kilometres west-south-west of Riyadh, and 150 kilometres west of the Shaib Marqan project. The EL area is 98.7 km².

The regional terrain is desert to semi-arid dominated by low, often steep sided hills. Alluvial terraces and gravel sheets form wadis that partially cover the area as low flat valleys.

¹ ASX announcement 21 August 2025

Vegetation is sparse with low trees and bushes found in the wadi areas. Land use is sparse grazing of livestock with population centres generally on or near the sealed highway.

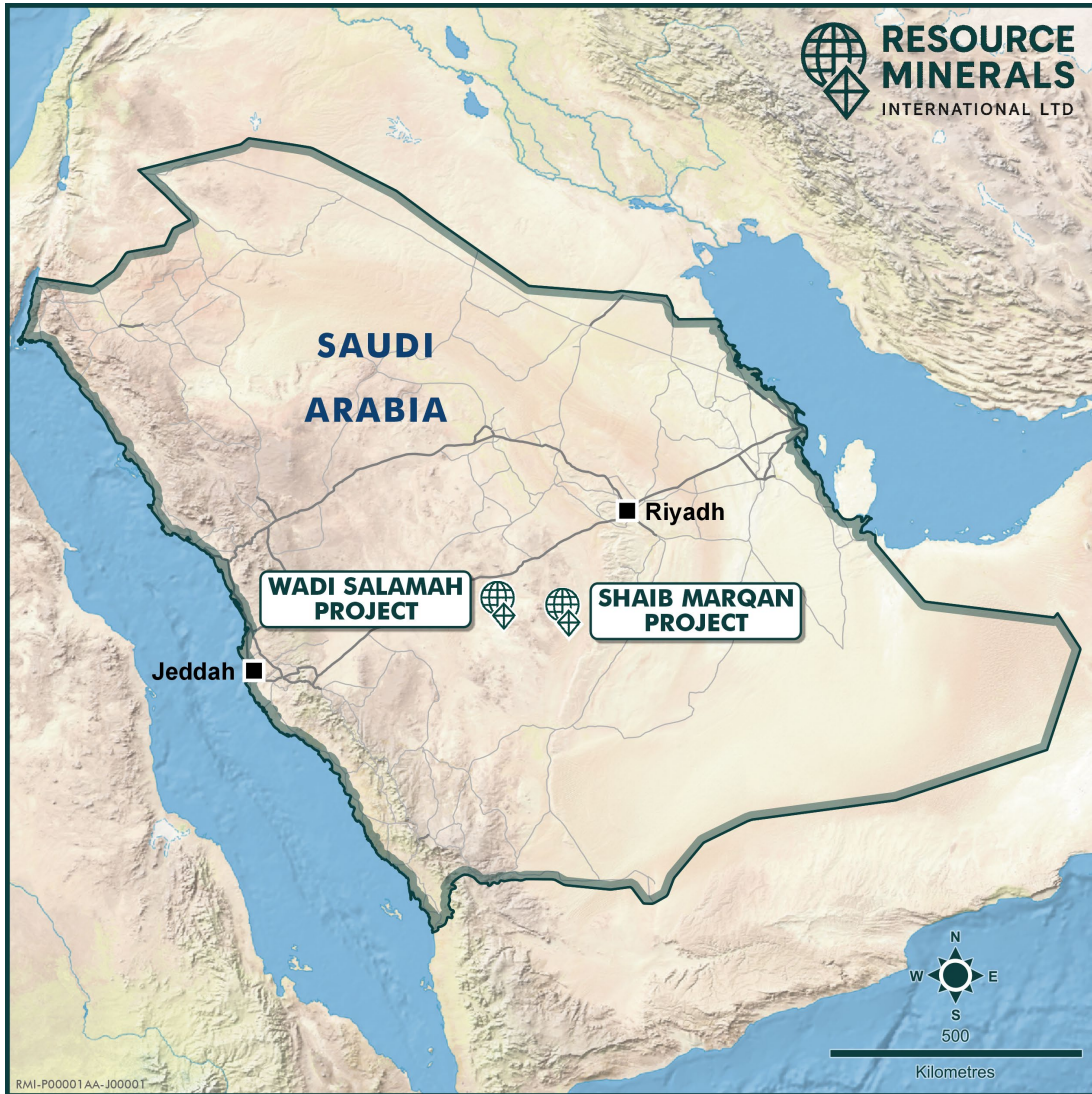


Figure 1: Project Location Map

Geological Setting

Both projects occur in the Proterozoic Arabian-Nubian Shield ("ANS") which extends across much of Saudi Arabia and eastern Egypt and Eritrea and hosts significant mineral deposits.

The **Shaib Marqan** project is in the southern section of the Ar Rayn Terrane as shown in Figure 2. The project area is dominated by Proterozoic age volcanic rocks including syn- to post-tectonic tonalite, diorite, trondhjemite, and gabbro intrude arc-related ignimbrite, rhyolite tuff, marble, and andesite of the Shalahib Formation of the Al Amar Group. Quaternary

For personal use only

alluvial terraces and gravel sheets form wadis that partially cover the south-eastern project area.

The Ar Rayn Terrane hosts multiple mineral systems and mineral commodities, including volcanogenic massive sulphide ("VMS")-hosted copper and zinc, epithermal and orogenic gold, and iron oxide copper/gold ("IOCG") deposits.

The project is near the major northwest striking Al Amar fault zone which bounds the Ar Rayn Terrane. A significant north-south striking splay of the Al Amar fault bisects the Shaib Marqan project area with multiple subordinate northeast and east west structures in a structurally complex area.

Wadi Salamah occurs within Murdama group rocks of the Zaydi formation, a thick accumulation (10,000 m inferred) of essentially elastic sediments with minor volcanic and subvolcanic intercalations and very subordinate calc-dolomitic lenses.

The Murdama group are folded and intruded by hypabyssal and plutonic rocks ranging from microgranite to gabbro.

Historic mineralisation has been identified in shear hosted auriferous veins and stockworks often with a silver association and mined in ancient small artisanal scale mines.

No known modern exploration has occurred in either project area.

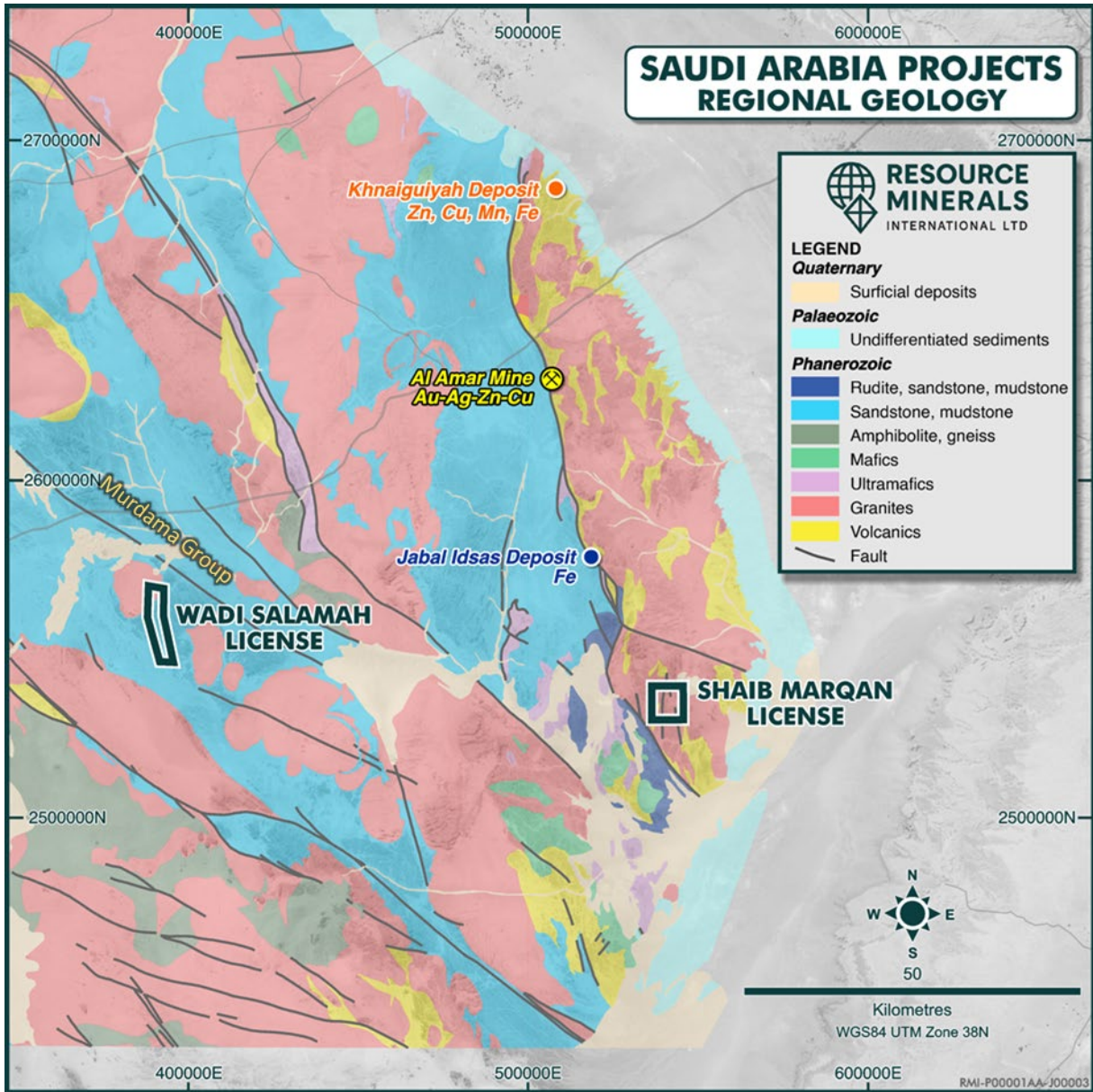


Figure 2: 1:1 million scale regional geology Shaib Marqan and Wadi Salamah area

Shaib Marqan Rock Chip Results

A total of eighty-seven (87) rock chips were collected from the southern-central portion of the Shaib Marqan project. This area was targeted as the previous samples collected in 2024 and reported in January 2025 included high grade gold assay results².

² ASX announcement 13 January 2025

For personal use only

Field inspection conducted by RMI geologists observed abundant quartz veins, stockworks and shear zones, many with visible sulphide minerals, and several small-scale ancient mine workings on quartz veins and more recent alluvial mining in the wadi systems. Strike lengths and widths of veins were variable ranging from isolated quartz “blows” to veins in shear zones extending several hundred metres. The alluvial mining of the wadis is extensive in some areas.

Sample results greater than 1.0 g/t gold (Au) are listed in Table 1 with all sample results listed in Appendix 1. In addition to these higher grade results a further 13 samples recorded anomalous gold grades between 0.20 g/t and 0.85 g/t Au indicating widespread gold anomalism in outcrop.

Table 1: Shaib Marqan March 2025 Rock Chip Results >1g/t Au

Sample ID	Au ppm	Description
SM149	40.35	Quartz vein, laminated, 1.5m wide
SM177	9.62	Quartz vein, Fe stain, gossanous boxwork
SM173	7.30	Quartz vein boudins in shear, Fe stain
SM124	5.72	Quartz vein, Fe stain
SM171	4.52	Schist with quartz stringers, 1m channel sample
SM139	4.18	Quartz vein - massive
SM150	4.13	Schist hanging wall and foot wall composite sample to SM149
SM148	3.30	Quartz vein, laminated, Fe stain
SM157	2.36	Quartz vein, Fe stain
SM181	2.01	Quartz stockwork veins, Fe stain, 1.5m x 1.0 m panel sample
SM172	1.76	Schist, gossanous Fe stain 1.0m channel sample
SM165	1.68	Schist, quartz veinlets, trace pyrite, 1.0m channel sample
SM125	1.52	Quartz veins in shear
SM112	1.52	Schist, chlorite sheared trace pyrite.
SM136	1.36	Schist, quartz veinlets, trace pyrite, 0.6m channel sample
SM178	1.08	Wall rock quartz stringers panel sample.
SM121	1.04	Wall rock quartz stringers panel sample.
SM111	1.02	Quartz vein in ancient working, siderite, trace oxidised sulphide

Figure 3 shows the distribution of results on a satellite image which highlights the limited area covered by the reconnaissance work compared to the overall licence area.

Sampling was not exhaustive with many outcropping veins not sampled in the time available. Further sampling will be conducted as part of the next phase of exploration.

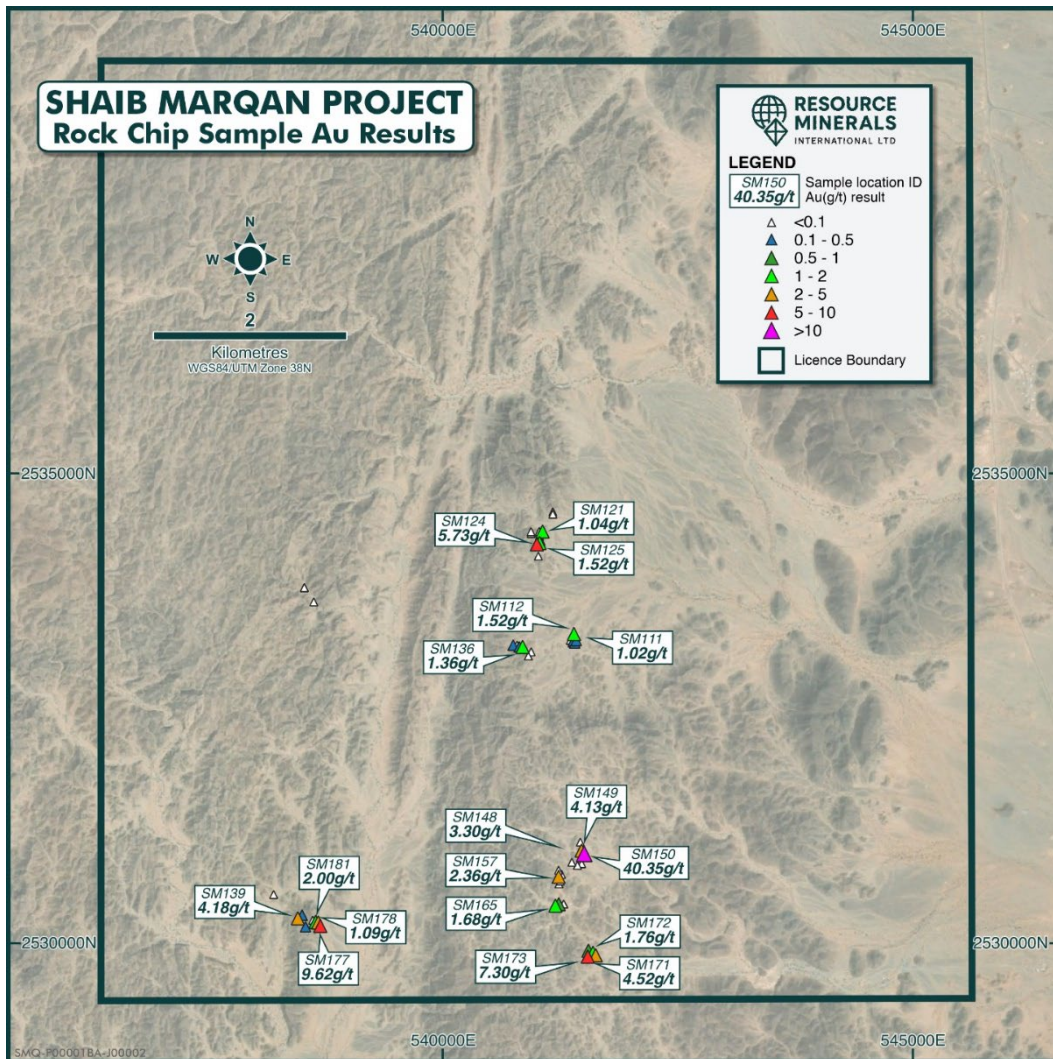


Figure 3: Shaib Marqan rock chip gold assay result locations

The results indicate endowment of gold is widespread in the area sampled hosted in quartz veins and shear zones often with abundant quartz veinlets. Weathered sulphide minerals with cubic pyrite visible as iron oxide pseudomorphs and gossanous boxwork occur in schists often in contact with quartz veins show gold distribution is in both veins and associated host rock.

Wadi Salamah Rock Chip Results

The rock chip results were collected in two locations named WS South and WS Central. The WS South area provided multiple samples with elevated gold and silver grades. Figure 4 shows the locations of the two areas of sampling within the Wadi Salamah project area.

For personal use only

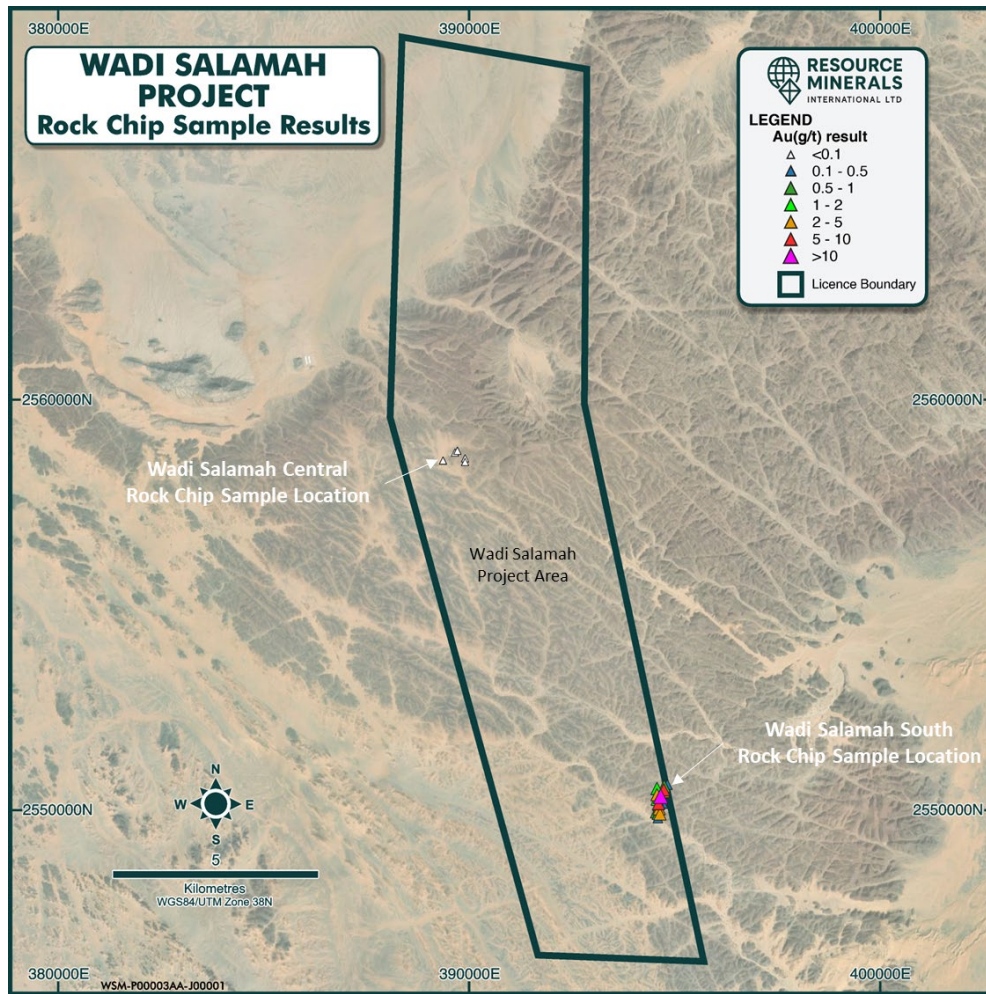


Figure 4: Wadi Salamah project area and rock chip sample locations

The WS South samples were collected along a shear zone over a strike length of over 700 metres of outcrop. The shear progresses under the sand of a wadi at the southern extent of sampling. The northern extent continues beyond the lease boundary where sampling was terminated. The shear is subvertical and has a minimum observed width of approximately 10 metres and extends to over 30 metres wide in the central and southern portion of the sampled strike length.

Most samples from WS South are from quartz veins from within the shear zone. These veins are generally flat dipping and appear as sheeted veins or a stockwork within the shear. There is often black sulphide mineral visible in trace quantities that is interpreted to be galena based on the assay results.

Parallel to the shear are some massive quartz veins several metres thick which are also mineralised with gold and silver as seen in samples WS112 and WS116,

Table 2: Wadi Salamah March 2025 Rock Chip Results >1g/t Au

Sample ID	Au ppm	Ag ppm	Description
WS107	10.66	40.4	Quartz vein, trace visible sulphide
WS104	7.56	19.0	Quartz vein, laminated, iron stain
WS110	5.50	18.0	Quartz vein, microcrystalline (sugary) texture, iron stain
WS112	4.27	38.9	Quartz vein massive 2m thick
WS103	3.09	15.9	Quartz vein, laminated
WS116	2.73	37.3	Quartz vein massive 1.5 metres thick
WS106	2.30	5.1	Quartz vein trace visible sulphide
WS108	1.83	1.7	Quartz vein trace visible sulphide
WS105	1.78	1.8	Quartz vein, iron stain

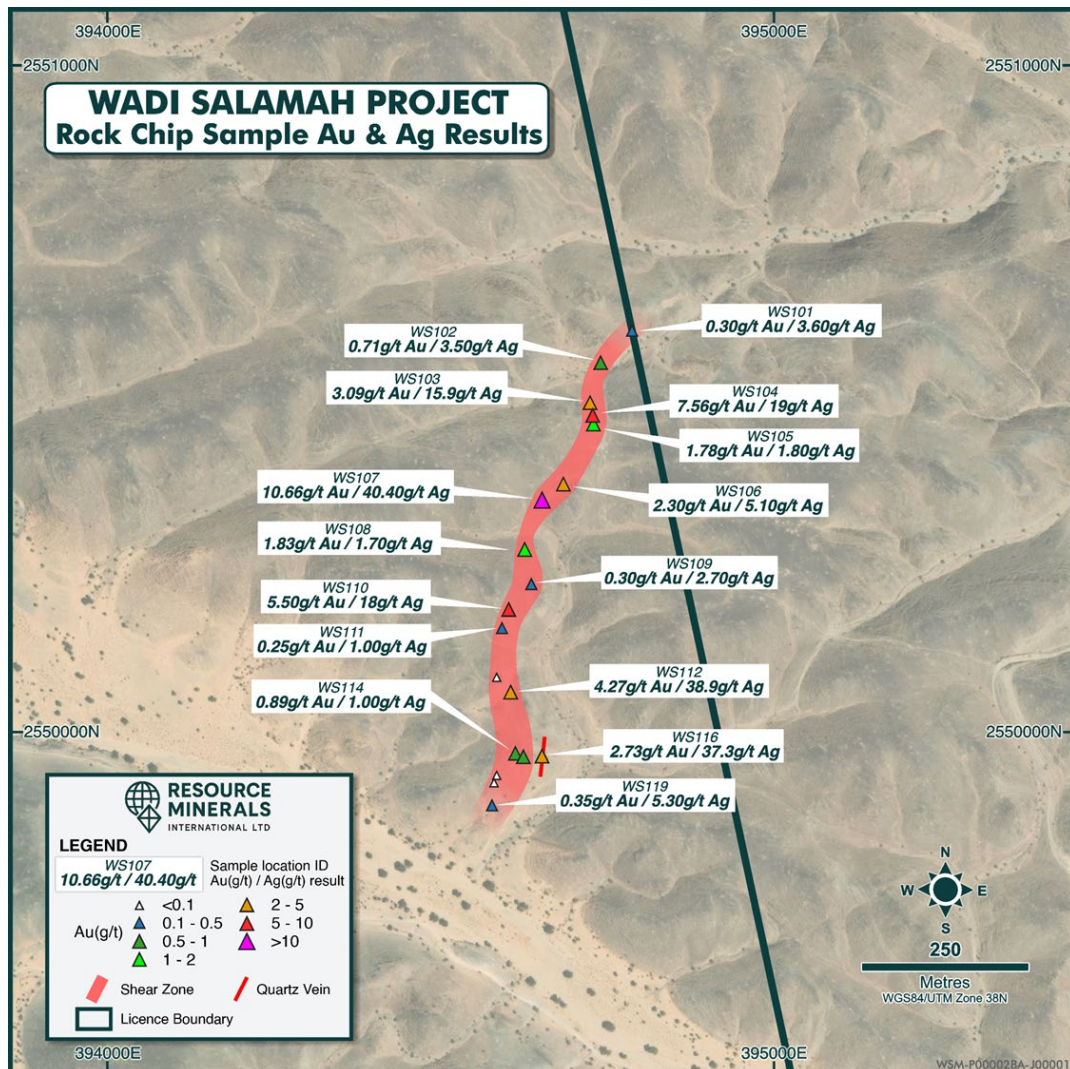


Figure 5: Wadi Salamah South rock chip sample gold and silver results in shear zone sampled over 700 metres strike length

For personal use only

Samples from WS Central were mostly taken from a pale pink coloured porphyry/granitic dyke exposed over several hundred metres with a trace of visible pyrite common. These samples all returned below detection gold assays.

Future Exploration Plan

Followup exploration is in planning for both projects and will include an initial stage of detailed magnetics survey to help target drilling programs. Regional exploration will include stream sediment sampling, detailed geological mapping and rock chip sampling to generate further drill targets.

Saudi Arabia's Mining Sector Expansion

Saudi Arabia's Vision 2030 reform agenda has elevated the mining sector's role in the Saudi economy, positioning it as a third key economic pillar as part of the National Industrial Development and Logistics Program. The Kingdom's focus on mining is driven by a desire to diversify the economy and increase non-oil revenue as it weans itself off oil dependence. Furthermore, minerals are key inputs in many industries essential to Vision 2030 objectives, such as achieving a green transition, digitising the economy, becoming a global hub for technology and connectivity, producing nuclear energy, and localising military procurement. The mining law that came into effect in 2021 targets the exploitation of the Kingdom's mineral resources and the development of its mineral-based manufacturing industry, all of which are aimed at reducing imports to the Kingdom by circa US\$10 Billion per annum and generate more than 200,000 jobs by 2030³.

END

This ASX announcement has been authorised for lodgement by the Board of Resource Minerals International Ltd.

For further information, contact	
Asimwe Kabunga Executive Chairman rmi@resmin.com.au	Ben Jarvis Six Degrees Investor Relations 0413 150 448 or ben.jarvis@sdir.com.au

About Resource Minerals International Ltd

The strategic intent of Resource Minerals International Ltd (ASX:RMI) is to establish a long term business based on mineral development delivering consistent shareholder

³ <https://www.vision2030.gov.sa/en>

value whilst operating in a sustainable way within the community and environment in which we operate.

In Tanzania, RMI has two exploration projects targeting Copper-Gold and six projects focused on Nickel occurrences in sulphides within known and prolific mafic and ultramafic intrusions. In Finland, RMI has two projects, focusing on the exploration of Lithium. In Saudi Arabia, RMI has two exploration projects focussed on exploration for gold and silver within the Arabian-Nubian Shield (ANS) which extends across much of Saudi Arabia and eastern Egypt and Eritrea and hosts significant mineral deposits.

The Board has strong ties to Tanzania, Chaired by Asimwe Kabunga, a Tanzanian-born Australian entrepreneur who was instrumental in establishing the Tanzania Community of Western Australia Inc. and served as its first President.

Tanzanian Projects	Finnish Projects
<p style="text-align: center;"><u>Copper/Gold</u></p> <ul style="list-style-type: none"> Mpanda and Mbozi Projects Both projects are located within the Ubendian Orogenic Belt, a major source of Ni, Cu and Au resources within Tanzania. <p style="text-align: center;"><u>Nickel</u></p> <ul style="list-style-type: none"> Kabanga North Nickel Project Situated along strike from the Kabanga Nickel Project, which has an estimated mineral resource of 58mt @ 2.62% Ni, or nickel equivalent grade of 3.14% (including cobalt and copper)⁴. Kapalagulu Project 32km mapped mafic/ultramafic sequence with historical reports noting nickel, PGE and copper anomalism. Kabulwanyele Project The project is located in the Mpanda District of Tanzania covering approximately 20.5 square kilometres. Southern Projects (Liparamba, Kitai, Mbinga) Previously explored by BHP/Albidon and Jacana Resources. 	<p style="text-align: center;"><u>Lithium</u></p> <ul style="list-style-type: none"> Kola Lithium Project (Köyhäjoki and Pikkukallio exploration permits) Located in the most significant lithium- mining region of Finland, and directly south of Keliber's flagship Syväjärvi and Rapasaari deposits. Hirvikallio Lithium Project (Laitinen permit application) Initial exploration works completed by GTK across the project's area identified approximately 25 km² with pegmatite dykes returning promising results including 5m @ 2.30% Li₂O and 2m @ 1.33% Li₂O.
	Saudi Arabian Projects
	<p style="text-align: center;"><u>Gold</u></p> <ul style="list-style-type: none"> Shaib Marqan Project is in the southern section of the Ar Rayn Terrane and covers an area of 91.8km². Wadi Salamah Project occurs within Murdama group rocks of the Zaydi formation and covers an area of 98.7km².

⁴ Refer to ASX announcement dated 9 May 2022 including the Competent Person Statement disclosed, and Glencore Resources and Reserves as at 31 December 2019. The Mineral Resource Estimate is broken down into the following classifications – 13.8mT @ 2.49% Ni Measured, 23.4mT @ 2.72% Ni% indicated & 21mT @ 2.6% Ni inferred. RMI does not have any interest in the Kabanga Nickel Project.

Competent Person Statement

The information in this Report that relates to exploration results is based on information compiled by Mr Geoff Chapman, who is a Fellow of the Australian Institute of Mining and Metallurgy (AusIMM membership number 111889) and engaged by Resource Mineral International as a consultant. Mr Chapman has sufficient experience relevant to the style of mineralisation and type of deposit under consideration and to the activity being undertaken to qualify as a Competent Person as defined in the 2012 Edition of the 'Australasian Code for Reporting of Exploration Results, Mineral Resources and Ore Reserves' (JORC Code).

Where the Company refers to Exploration Results in this announcement (referencing previous releases made to the ASX), the Company confirms that it is not aware of any new information or data that materially affects the information included in the relevant market announcements.

Forward Looking Statements

Some of the statements appearing in this announcement may be in the nature of forward looking statements. You should be aware that such statements are only predictions and are subject to inherent risks and uncertainties. Those risks and uncertainties include factors and risks specific to the industries in which the Company operates and proposes to operate as well as general economic conditions, prevailing exchange rates and interest rates and conditions in the financial markets, among other things. Actual events or results may differ materially from the events or results expressed or implied in any forward- looking statement. No forward looking statement is a guarantee or representation as to future performance or any other future matters, which will be influenced by a number of factors and subject to various uncertainties and contingencies, many of which will be outside the Company's control.

The Company does not undertake any obligation to update publicly or release any revisions to these forward-looking statements to reflect events or circumstances after today's date or to reflect the occurrence of unanticipated events. No representation or warranty, express or implied, is made as to the fairness, accuracy, completeness or correctness of the information, opinions or conclusions contained in this announcement. To the maximum extent permitted by law, neither of the Company's Directors, employees, advisors or agents, nor any other person, accepts any liability for any loss arising from the use of the information contained in this announcement. You are cautioned not to place undue reliance on any forward-looking statement. The forward-looking statements in this announcement reflect views held only as at the date of this announcement.

This announcement is not an offer, invitation or recommendation to subscribe for, or purchase securities by the Company. Nor does this announcement constitute investment or financial product advice (nor tax, accounting or legal advice) and is not intended to be used for the basis of making an investment decision. Investors should obtain their own advice before making any investment decision.

Appendix 1: Sample Details and Assay Results for Wadi Salamah and Shaib Marqan in this announcement.
Datum WGS84 UTM Zone 38N
Shaib Marqan Results

Sample ID	East	North	Au ppm	Mo ppm	Cu ppm	Pb ppm	Zn ppm	Ag ppm	As ppm	Sb ppm	Description
SM101	541376	2533197	0.004	<1	45	<3	44	<0.3	<2	<3	Diorite, silicified, chloritized
SM102	541376	2533197	<0.003	2	8	<3	5	<0.3	<2	<3	Quartz vein adjacent to SM101
SM103	541390	2533211	<0.003	<1	10	<3	2	<0.3	<2	<3	Quartz vein
SM104	541390	2533211	0.203	<1	94	<3	30	<0.3	<2	<3	Diorite, wall rock to quartz vein SM103, chlorite
SM105	541390	2533211	0.003	<1	42	<3	18	<0.3	<2	<3	Diorite wall rock intercalated in vein, trace oxidised sulphide
SM106	541393	2533224	<0.003	1	21	<3	11	<0.3	<2	<3	Quartz veins with Fe-stained selvedge, trace weathered sulphides.
SM107	541392	2533225	0.485	<1	205	<3	12	<0.3	<2	<3	Chlorite schist with quartz veining. Mn, Fe stain HW to SM108
SM108	541392	2533225	0.041	<1	10	<3	3	<0.3	<2	<3	Quartz vein, massive, Fe staining, intercalated with wall rock
SM109	541392	2533225	0.301	<1	208	<3	6	<0.3	<2	<3	Schist, Fe stain, quartz vein/stringers throughout FW to SM108
SM110	541404	2533293	0.068	2	7	<3	2	<0.3	<2	<3	Quartz vein, Fe stain and trace oxidised sulphide
SM111	541396	2533293	1.023	<1	21	<3	12	<0.3	<2	<3	Quartz vein in ancient working, siderite, trace oxidised sulphide
SM112	541396	2533293	1.516	<1	19	<3	51	<0.3	2	<3	Schist with minor quartz veinlets. Footwall of SM111 vein. Channel sample width 1 metre
SM113	541371	2533232	<0.003	<1	5	<3	3	<0.3	2	<3	Schist contacts with quartz vein SM114. trace pyrite and Fe oxides
SM114	541371	2533232	0.005	<1	3	<3	<1	<0.3	<2	<3	Quartz vein, Fe stain, trace Fe oxide after pyrite
SM115	540942	2533103	0.037	<1	3	<3	12	<0.3	<2	<3	Quartz vein, trace Fe oxides after pyrite
SM116	540912	2533059	0.016	<1	2	<3	16	<0.3	<2	<3	Schist contacts with quartz vein, trace Fe oxides after pyrite
SM117	538207	2530527	0.042	<1	17	<3	2	<0.3	<2	<3	Shear zone >10m wide, schist with quartz vein intercalation. Historic workings in shear

Sample ID	East	North	Au ppm	Mo ppm	Cu ppm	Pb ppm	Zn ppm	Ag ppm	As ppm	Sb ppm	Description
SM118	541028	2534379	<0.003	1	11	<3	3	0.7	<2	<3	Quartz vein, Fe stained
SM119	541028	2534379	0.034	<1	7	<3	7	<0.3	<2	<3	Quartz vein with siderite (?)
SM120	541028	2534379	0.019	<1	17	<3	23	<0.3	<2	<3	Shear zone schist with quartz vein intercalation
SM121	541028	2534374	1.041	<1	13	<3	14	<0.3	<2	<3	Wall rock quartz stringers panel sample.
SM122	541030	2534332	0.006	<1	3	<3	4	<0.3	<2	<3	Quartz vein, massive.
SM123	541030	2534332	0.025	<1	2	<3	22	<0.3	<2	<3	Schist contact margin to SM122
SM124	541031	2534259	5.725	<1	3	<3	1	<0.3	<2	<3	Quartz vein, Fe stain
SM125	541031	2534259	1.52	<1	9	<3	5	<0.3	<2	<3	Quartz veins in shear
SM126	541040	2534277	0.004	<1	9	<3	3	<0.3	<2	<3	Quartz vein, massive
SM127	541018	2534119	0.004	<1	45	<3	32	<0.3	<2	<3	Schist quartz chlorite
SM128	540942	2534357	0.007	40	79	<3	2	<0.3	16	<3	Quartz vein, Fe stained, boxwork after pyrite
SM129	540941	2534362	0.081	2	107	<3	17	<0.3	4	<3	Quartz veinlets in shear, composite sample
SM130	540941	2534362	0.02	27	35	<3	2	<0.3	10	<3	Schist quartz chlorite. Composite sample 3 metres wide
SM131	540940	2534379	<0.003	<1	9	<3	7	<0.3	<2	<3	Quartz vein, massive, green stain
SM132	541172	2534589	0.023	<1	3	<3	13	<0.3	<2	<3	Quartz vein massive 1.2 metres wide.
SM133	541172	2534579	0.01	<1	2	<3	23	<0.3	<2	<3	Schist quartz stringers and veinlets in shear zone
SM134	540793	2533174	0.028	<1	13	<3	2	<0.3	<2	<3	Quartz vein massive
SM135	540793	2533174	0.167	<1	374	<3	1	<0.3	<2	<3	Quartz vein, trace pyrite
SM136	540816	2533156	1.361	<1	42	<3	48	<0.3	<2	<3	Schist chlorite sheared trace pyrite. Adjacent to SM137
SM137	540816	2533156	0.216	<1	46	<3	37	<0.3	<2	<3	Shear, brown carbonate, chlorite, quartz veinlets
SM138	540816	2533156	0.286	<1	11	<3	7	<0.3	<2	<3	Quartz vein composite from shear in SM136 and 137
SM139	538456	2530323	4.184	2	56	<3	5	<0.3	3	<3	Quartz vein massive
SM140	538509	2530307	0.106	3	10	3	42	0.3	<2	<3	Quartz vein gossanous surrounding SM141
SM141	538509	2530307	0.004	<1	3	<3	<1	<0.3	<2	<3	Quartz vein bucky adjacent to SM140
SM142	538509	2530307	0.353	1	15	<3	9	<0.3	3	<3	Quartz vein Fe, Mn-stained trace Fe oxide after pyrite
SM143	538546	2530183	0.101	2	5	<3	11	<0.3	<2	<3	Quartz vein. Trace gossanous boxwork after pyrite

Sample ID	East	North	Au ppm	Mo ppm	Cu ppm	Pb ppm	Zn ppm	Ag ppm	As ppm	Sb ppm	Description
SM144	541478	2530854	0.015	<1	6	<3	9	<0.3	<2	<3	Quartz breccia
SM145	541478	2530854	0.005	<1	7	<3	4	<0.3	<2	<3	Quartz breccia. Microcrystalline (sugary) quartz.
SM146	541433	2530836	0.006	<1	23	<3	4	<0.3	<2	<3	Quartz vein, bucky vein centre.
SM147	541374	2530869	0.01	<1	12	<3	4	<0.3	<2	<3	Quartz vein. Gossanous in places.
SM148	541345	2530993	3.302	<1	378	<3	2	0.3	<2	<3	Quartz vein, laminated, Fe stain
SM149	541477	2530993	40.346	2	389	<3	7	1.4	2	<3	Quartz vein, laminated, HW of ancient workings 1.5 m wide
SM150	541477	2530993	4.134	<1	49	<3	52	<0.3	<2	<3	Schist HW and FW composite sample to SM149
SM151	541477	2530993	0.261	<1	21	<3	3	<0.3	<2	<3	Quartz vein, laminated
SM152	541450	2531076	0.03	<1	6	<3	38	<0.3	<2	<3	Schist, contact with SM153
SM153	541237	2530639	0.022	<1	11	<3	9	<0.3	<2	<3	Quartz composite
SM154	541237	2530639	0.017	<1	24	<3	4	<0.3	<2	<3	Quartz vein Fe stain
SM155	541251	2530668	0.022	<1	40	<3	3	<0.3	<2	<3	Quartz vein Fe stain
SM156	541248	2530697	0.078	<1	184	<3	1	<0.3	<2	<3	Quartz vein Fe stain
SM157	541255	2530721	2.357	<1	504	<3	6	<0.3	<2	<3	Quartz vein Fe stain
SM158	541265	2530740	0.037	<1	22	<3	3	<0.3	<2	<3	Quartz vein Fe stain
SM159	541254	2530764	0.048	<1	2	<3	18	<0.3	<2	<3	Quartz vein Fe stain
SM160	541238	2530427	0.028	<1	59	<3	40	<0.3	<2	<3	Schist and quartz stringers limonitic
SM161	541237	2530426	0.03	<1	527	<3	8	<0.3	<2	<3	Quartz vein 0.5m wide laminated
SM162	541237	2530426	<0.003	<1	4	<3	7	<0.3	<2	<3	Quartz vein bucky 0.7m wide FW to 161
SM163	541236	2530425	0.011	<1	6	<3	4	<0.3	<2	<3	Schist, gossanous boxwork chloritic
SM164	541235	2530424	0.778	<1	27	<3	26	<0.3	<2	<3	Schist quartz stringers, limonitic boxwork
SM165	541234	2530423	1.68	<1	242	<3	56	<0.3	<2	<3	Schist chlorite, limonite, sericite(?) quartz stringers cgr pyrite pseudomorphs
SM166	541233	2530421	0.11	<1	85	<3	47	<0.3	<2	<3	Schist chlorite, limonite, quartz stringers
SM167	541231	2530419	0.021	<1	18	<3	38	<0.3	<2	<3	Schist, chlorite, biotite 2.5m wide channel sample
SM168	541230	2530418	0.013	<1	10	<3	48	<0.3	<2	<3	Schist, shear, chlorite, fgr pyrite
SM169	541287	2530426	<0.003	<1	11	<3	17	<0.3	<2	<3	Quartz vein composite, Fe stain
SM170	541287	2530426	0.02	<1	14	<3	52	<0.3	2	<3	FW shear contact to SM169, gossanous boxwork
SM171	541571	2529895	4.518	<1	8	<3	8	<0.3	<2	<3	Schist, quartz stringers, trace limonite after pyrite

personal use only

Sample ID	East	North	Au ppm	Mo ppm	Cu ppm	Pb ppm	Zn ppm	Ag ppm	As ppm	Sb ppm	Description
SM172	541571	2529895	1.761	<1	23	<3	24	<0.3	<2	<3	Schist, gossanous HW to 173. 1 m channel
SM173	541571	2529895	7.304	<1	150	<3	6	<0.3	<2	<3	Quartz vein composite sample, Fe stain
SM174	541571	2529895	0.778	<1	13	<3	24	<0.3	<2	<3	Quartz stockwork HW to SM173
SM175	538654	2530235	0.429	3	214	<3	117	<0.3	4	<3	Schist, quartz stringers 0.7m channel sample
SM176	538654	2530235	0.652	2	98	<3	124	<0.3	4	<3	Schist, quartz stringers 0.3m channel sample
SM177	538654	2530235	9.619	<1	45	<3	8	<0.3	<2	<3	Quartz vein remanent on FW of workings, gossanous boxwork
SM178	538654	2530235	1.085	<1	44	<3	65	<0.3	3	<3	Schist, quartz stockwork veins, composite sample
SM179	538654	2530235	0.812	4	57	<3	7	<0.3	<2	<3	Quartz stockwork veining HW to mining
SM180	538654	2530235	0.78	2	202	<3	16	<0.3	<2	<3	Quartz vein, 0.25 m wide
SM181	538654	2530235	2.006	5	159	<3	20	<0.3	<2	<3	Quartz stockwork in HW of mining above SM180
SM182	538636	2530253	0.013	<1	5	<3	24	<0.3	<2	<3	Schist, shear zone 5 metres wide
SM183	538533	2533785	0.003	<1	40	<3	39	<0.3	<2	<3	Quartz diorite
SM184	538533	2533785	0.015	<1	31	<3	51	<0.3	<2	<3	Schist chloritic
SM185	538533	2533785	0.036	<1	7	<3	14	<0.3	<2	<3	Quartz vein
SM186	538533	2533785	0.007	<1	63	<3	35	<0.3	<2	<3	Schist, chloritic
SM187	538633	2533634	0.018	<1	1353	<3	3	<0.3	<2	<3	Quartz float, abundant Cu staining

Wadi Salamah

Sample ID	UTM E	UTM N	Prospect	Au ppm	Mo ppm	Cu ppm	Pb ppm	Zn ppm	Ag ppm	Sb ppm	As ppm	Description
WS101	394787	2550602	WS South	0.30	89	160	1566	114	3.6	<3	5	Quartz vein laminated, iron stain
WS102	394740	2550554	WS South	0.71	77	77	1320	76	3.5	<3	4	Quartz vein, laminated, iron stain
WS103	394724	2550494	WS South	3.09	754	74	5401	35	15.9	<3	5	Quartz vein, laminated
WS104	394728	2550475	WS South	7.56	152	317	866	50	19	<3	4	Quartz vein, laminated, iron stain
WS105	394729	2550462	WS South	1.78	17	5	154	2	1.8	<3	<2	Quartz vein, iron stain
WS106	394684	2550372	WS South	2.30	162	98	234	24	5.1	<3	<2	Quartz vein trace visible sulphide
WS107	394652	2550348	WS South	10.66	63	146	2836	18	40.4	9	7	Quartz vein, trace visible sulphide
WS108	394626	2550274	WS South	1.83	48	33	215	25	1.7	15	8	Quartz vein trace visible sulphide

Sample ID	UTM E	UTM N	Prospect	Au ppm	Mo ppm	Cu ppm	Pb ppm	Zn ppm	Ag ppm	Sb ppm	As ppm	Description
WS109	394634	2550222	WS South	0.30	3	38	139	11	2.7	11	7	Quartz vein, vugs
WS110	394602	2550184	WS South	5.50	5	281	539	33	18	31	44	Quartz vein, microcrystalline (sugary) texture, iron stain
WS111	394592	2550156	WS South	0.245	2	43	251	22	1	<3	5	Quartz vein, laminated, iron stain
WS112	394605	2550060	WS South	4.274	9	18	142	19	38.9	<3	2	Quartz vein massive
WS113	394584	2550082	WS South	0.057	7	11	10	12	<0.3	<3	2	Quartz stringers in shear
WS114	394612	2549968	WS South	0.887	5	32	49	8	1	<3	<2	Quartz vein, shear hanging wall
WS115	394624	2549963	WS South	0.691	19	14	25	8	<0.3	<3	<2	Quartz vein in shear
WS116	394652	2549964	WS South	2.728	5	37	847	24	37.3	<3	<2	Quartz vein massive
WS117	394584	2549935	WS South	0.014	<1	3	<3	2	<0.3	<3	<2	Quartz veins in shear hanging wall
WS118	394580	2549924	WS South	0.011	5	5	8	5	<0.3	<3	<2	Quartz boudins in shear
WS119	394577	2549890	WS South	0.358	10	10	107	12	5.3	<3	<2	Quartz vein shear footwall
WS120	389651	2558704	WS Central	<0.003	<1	31	13	17	<0.3	<3	<2	Porphyry. Pink, iron stain, trace pyrite
WS121	389651	2558704	WS Central	0.004	<1	27	12	12	<0.3	<3	<2	Porphyry. Pink, iron stain, trace pyrite
WS122	389651	2558704	WS Central	<0.003	<1	7	24	26	<0.3	<3	<2	Porphyry. Pink, iron stain, trace pyrite
WS123	389897	2558566	WS Central	<0.003	<1	17	13	17	<0.3	<3	<2	Granite/porphyry sheared silicified, trace pyrite
WS124	389897	2558566	WS Central	<0.003	<1	17	10	16	<0.3	<3	<2	Granite/porphyry sheared silicified, iron stain trace pyrite
WS125	389361	2558512	WS Central	<0.003	1	30	9	2	<0.3	<3	<2	Quartz vein, massive

JORC Code, 2012 Edition – Table 1 report

Section 1 Sampling Techniques and Data

(Criteria in this section apply to all succeeding sections.)

Criteria	JORC Code explanation	Commentary
Sampling techniques	<ul style="list-style-type: none"> Nature and quality of sampling (e.g. cut channels, random chips, or specific specialised industry standard measurement tools appropriate to the minerals under investigation, such as down hole gamma sondes, or handheld XRF instruments, etc). These examples should not be taken as limiting the broad meaning of sampling. Include reference to measures taken to ensure sample representivity and the appropriate calibration of any measurement tools or systems used. Aspects of the determination of mineralisation that are Material to the Public Report. In cases where 'industry standard' work has been done this would be relatively simple (e.g. 'reverse circulation drilling was used to obtain 1 m samples from which 3 kg was pulverised to produce a 30 g charge for fire assay'). In other cases, more explanation may be required, such as where there is coarse gold that has inherent sampling problems. Unusual commodities or mineralisation types (e.g. submarine nodules) may warrant disclosure of detailed information. 	<p>Rock chip sampling was undertaken on a visual basis from locations identified by visual site examination and from satellite imagery.</p> <p>Samples were collected from outcrop of fresh or weathered rock and exposures in historic mine workings.</p> <p>Samples collected using hammer and rock chisel making rock fragments from discrete locations. Samples from different locations were not mixed or composited.</p> <p>Where possible channel or panel sampling was used with measurement of sample lengths noted.</p>
Drilling techniques	<ul style="list-style-type: none"> Drill type (e.g. core, reverse circulation, open-hole hammer, rotary air blast, auger, Bangka, sonic, etc) and details (e.g. core diameter, triple or standard tube, depth of diamond tails, face-sampling bit or other type, whether core is oriented and if so, by what method, etc). 	Not applicable
Drill sample recovery	<ul style="list-style-type: none"> Method of recording and assessing core and chip sample recoveries and results assessed. Measures taken to maximise sample recovery and ensure 	Not applicable

For personal use only

Criteria	JORC Code explanation	Commentary
	<p><i>representative nature of the samples.</i></p> <ul style="list-style-type: none"> <i>Whether a relationship exists between sample recovery and grade and whether sample bias may have occurred due to preferential loss/gain of fine/coarse material.</i> 	
Logging	<ul style="list-style-type: none"> <i>Whether core and chip samples have been geologically and geotechnically logged to a level of detail to support appropriate Mineral Resource estimation, mining studies and metallurgical studies.</i> <i>Whether logging is qualitative or quantitative in nature. Core (or costean, channel, etc) photography.</i> <i>The total length and percentage of the relevant intersections logged.</i> 	Logging was a brief qualitative description of individual rock chips and is reported in this report
Sub-sampling techniques and sample preparation	<ul style="list-style-type: none"> <i>If core, whether cut or sawn and whether quarter, half or all core taken.</i> <i>If non-core, whether riffled, tube sampled, rotary split, etc and whether sampled wet or dry.</i> <i>For all sample types, the nature, quality and appropriateness of the sample preparation technique.</i> <i>Quality control procedures adopted for all sub-sampling stages to maximise representivity of samples.</i> <i>Measures taken to ensure that the sampling is representative of the in situ material collected, including for instance results for field duplicate/second-half sampling.</i> <i>Whether sample sizes are appropriate to the grain size of the material being sampled.</i> 	<p>No sub-sampling techniques employed.</p> <p>Laboratory QAQC was undertaken using CRM's.</p> <p>The sample mass was recorded for each sample and sizes are considered appropriate given the nature of the rock chips collected.</p> <p>Material was collected In situ from outcrops unless stated otherwise in this report.</p>
Quality of assay data and laboratory tests	<ul style="list-style-type: none"> <i>The nature, quality and appropriateness of the assaying and laboratory procedures used and whether the technique is considered partial or total.</i> <i>For geophysical tools, spectrometers, handheld XRF instruments, etc, the parameters used in determining the analysis</i> 	<p>Rock chip samples were submitted to Bureau Veritas Minerals Solutions of Jeddah in the Kingdom of Saudi Arabia.</p> <p>Analytical Code FA450 for gold analysis; <i>Lead collection Fire Assay 50 g, AAS finish.</i></p> <p>Analytical Code AQ300 for multi-element analysis <i>Aqua Regia ICP-ES, 0.5 g</i></p> <p>Assay results for all samples are reported in Annexure A.</p>

Criteria	JORC Code explanation	Commentary
	<p>including instrument make and model, reading times, calibrations factors applied and their derivation, etc.</p> <ul style="list-style-type: none"> Nature of quality control procedures adopted (e.g. standards, blanks, duplicates, external laboratory checks) and whether acceptable levels of accuracy (i.e. lack of bias) and precision have been established. 	
Verification of sampling and assaying	<ul style="list-style-type: none"> The verification of significant intersections by either independent or alternative company personnel. The use of twinned holes. Documentation of primary data, data entry procedures, data verification, data storage (physical and electronic) protocols. Discuss any adjustment to assay data. 	No varification conducted
Location of data points	<ul style="list-style-type: none"> Accuracy and quality of surveys used to locate drill holes (collar and down-hole surveys), trenches, mine workings and other locations used in Mineral Resource estimation. Specification of the grid system used. Quality and adequacy of topographic control. 	<p>All location data is collected in UTM Zone 38n.</p> <p>Sample locations were surveyed with a handheld GPS unit and reported in this report.</p> <p>RL's are not reported.</p>
Data spacing and distribution	<ul style="list-style-type: none"> Data spacing for reporting of Exploration Results. Whether the data spacing and distribution is sufficient to establish the degree of geological and grade continuity appropriate for the Mineral Resource and Ore Reserve estimation procedure(s) and classifications applied. Whether sample compositing has been applied. 	Rock chips collected were based on the visual observations of the supervising field geologist.
Orientation of data in relation to geological structure	<ul style="list-style-type: none"> Whether the orientation of sampling achieves unbiased sampling of possible structures and the extent to which this is known, considering the deposit type. If the relationship between the 	No orientation bias is considered.

For personal use only

Criteria	JORC Code explanation	Commentary
	<i>drilling orientation and the orientation of key mineralised structures is considered to have introduced a sampling bias, this should be assessed and reported if material.</i>	
Sample security	<ul style="list-style-type: none"> The measures taken to ensure sample security. 	Samples transfer to laboratory was managed by RMI representatives by secure means of road transport within Saudi Arabia.
Audits or reviews	<ul style="list-style-type: none"> The results of any audits or reviews of sampling techniques and data. 	No audits or reviews have been undertaken

Section 2 Reporting of Exploration Results

(Criteria listed in the preceding section also apply to this section.)

Criteria	JORC Code explanation	Commentary
Mineral tenement and land tenure status	<ul style="list-style-type: none"> Type, reference name/number, location and ownership including agreements or material issues with third parties such as joint ventures, partnerships, overriding royalties, native title interests, historical sites, wilderness or national park and environmental settings. The security of the tenure held at the time of reporting along with any known impediments to obtaining a licence to operate in the area. 	<p>Shaib Marqan Project</p> <p>The Shaib Marqan project is located in the central region of the Kingdom, of Saudi Arabia, approx. 240 km south-west of Riyadh in central Saudi Arabia.</p> <p>The project is covered by a 91.8 km² granted exploration licence number 20240300037 and was granted on 17 August 2025 and has an initial term of 5 years.</p> <p>Wadi Salamah Project</p> <p>The Wadi Salamah project is located in the central region of the Kingdom, of Saudi Arabia, approx. 330 km west-south-west of Riyadh in central Saudi Arabia.</p> <p>The project is covered by a 98.7 km² granted exploration licence number 20240300037</p> <p>The JV Company which holds both licences is Segia al Haditha Mining Co. LLC. The JV company shareholding is 50% Resources Minerals International Ltd, 30% Barg Alsaman Mining Company, 20% Ven Capital Pty Ltd.</p>
Exploration done by other parties	<ul style="list-style-type: none"> Acknowledgment and appraisal of exploration by other parties. 	<p>Shaib Marqan Project</p> <p>The majority of exploration work within Shaib Marqan has been conducted by the Bureau de Recherche's Geologiques et Minière's (BRMG), beginning in 1956, with further mapping, sampling, petrography, airborne magnetic and scintillometer surveys completed in 1970. In 1983 BRGM conducted soil rock sampling, channel sampling, dump sampling, stream sediment sampling.</p>

Criteria	JORC Code explanation	Commentary
		<p>Detailed geological mapping of the Wadi Al Mulaayh Quadrangle (Sheet 22H) was completed in 1984.</p> <p>Total-intensity aeromagnetic maps of the Arabian Shield were completed in 1985.</p> <p>Auking Mining Limited conducted reconnaissance rock chip sampling in 2024 with 11 samples collected from several locations.</p> <p>Wadi Salamah Project</p> <p>Geological mapping of the area is recorded commencing in 1953 with subsequent phases of mapping to 1963 by various parties.</p> <p>Bureau de Recherche's Geologiques et Minière's (BRMG), conducted more detailed mapping beginning in 1966.</p> <p>In 1965 the area was included in airborne magnetic and scintillometer surveys completed in 1970.</p> <p>1:250k geological mapping of the region including Wadi Salamah was conducted between 1966 and 1970.</p>
<p><i>Geology</i></p>	<ul style="list-style-type: none"> <i>Deposit type, geological setting and style of mineralisation.</i> 	<p>Both the Shaib Marqan and Wadi Salamah projects are located on the Proterozoic rocks of the Arabian-Nubian Shield (ANS).</p> <p>Shaib Marqan Project</p> <p>Shaib Marqan occurs in the Ar Reyn Terrane comprised of mainly syn-to post-tectonic tonalitic and granodioritic gneisses that intrude tholeiitic to calc alkaline volcanic rocks of the Al Amar group.</p> <p>The Shaib Marqan project is dominated by volcanic rocks Syn to post tectonic tonalite, diorite, gabbro, rhyolite tuff, marble and andesite of the Shalahib formation of the Al Amar Group.</p> <p>Regional mineralisation is primarily epithermal Au, with the Al Amar deposit being the most notable example.</p> <p>Mineralisation with the Shaib Marqan project area has historically been identified within metre-thick and 300m long auriferous quartz veins inside granitic and intrusive massifs</p> <p>Wadi Salamah Project</p> <p>Wadi Salamah occurs within Murdama group rocks of the Zaydi formation, a thick accumulation (10,000 m inferred) of essentially elastic sediments with minor volcanic and subvolcanic intercalations and very subordinate calc-dolomitic lenses.</p>

For personal use only

Criteria	JORC Code explanation	Commentary
		<p>The Murdama group are folded and intruded by hypabyssal and plutonic rocks ranging from microgranite to gabbro.</p> <p>Historic mineralisation has been identified in shear hosted auriferous quartz veins and stockworks often with silver association and mined in ancient small artisanal scale mines.</p>
Drill hole Information	<ul style="list-style-type: none"> • A summary of all information material to the understanding of the exploration results including a tabulation of the following information for all Material drill holes: <ul style="list-style-type: none"> ○ easting and northing of the drill hole collar ○ elevation or RL (Reduced Level – elevation above sea level in metres) of the drill hole collar ○ dip and azimuth of the hole ○ down hole length and interception depth ○ hole length. • If the exclusion of this information is justified on the basis that the information is not Material and this exclusion does not detract from the understanding of the report, the Competent Person should clearly explain why this is the case. 	Not applicable
Data aggregation methods	<ul style="list-style-type: none"> • In reporting Exploration Results, weighting averaging techniques, maximum and/or minimum grade truncations (e.g. cutting of high grades) and cut-off grades are usually Material and should be stated. • Where aggregate intercepts incorporate short lengths of high-grade results and longer lengths of low-grade results, the procedure used for such aggregation should be stated and some typical examples of such aggregations should be shown in detail. • The assumptions used for any reporting of metal equivalent values should be clearly stated. 	<p>No aggregation methods applied</p> <p>No maximum or minimum grade cutting has been applied</p> <p>No metal equivalent values are used.</p>
Relationship between mineralisation widths and intercept lengths	<ul style="list-style-type: none"> • These relationships are particularly important in the reporting of Exploration Results. • If the geometry of the mineralisation with respect to the drill hole angle is known, its nature should be reported. • If it is not known and only the down hole lengths are reported, there should be a clear statement to this effect (e.g. 'down hole length, true width not known'). 	Not applicable
Diagrams	<ul style="list-style-type: none"> • Appropriate maps and sections (with scales) and tabulations of intercepts should be included for any significant discovery being reported These should include, but not be limited to a plan view 	Refer to diagrams in body of text.

For personal use only

Criteria	JORC Code explanation	Commentary
	<i>of drill hole collar locations and appropriate sectional views.</i>	
<i>Balanced reporting</i>	<ul style="list-style-type: none"> Where comprehensive reporting of all Exploration Results is not practicable, representative reporting of both low and high grades and/or widths should be practiced to avoid misleading reporting of Exploration Results. 	<p>This report contains results consistent with the JORC guidelines for the stage of the project.</p> <p>Where data may have been excluded, it is considered not material.</p>
<i>Other substantive exploration data</i>	<ul style="list-style-type: none"> Other exploration data, if meaningful and material, should be reported including (but not limited to): geological observations; geophysical survey results; geochemical survey results; bulk samples – size and method of treatment; metallurgical test results; bulk density, groundwater, geotechnical and rock characteristics; potential deleterious or contaminating substances. 	No other substantive data exists
<i>Further work</i>	<ul style="list-style-type: none"> The nature and scale of planned further work (e.g. tests for lateral extensions or depth extensions or large-scale step-out drilling). Diagrams clearly highlighting the areas of possible extensions, including the main geological interpretations and future drilling areas, provided this information is not commercially sensitive. 	Future work programs are anticipated to include stages of geophysical survey, drilling, assay and extraction test work progressing as appropriate.