

ASX RELEASE | 13 OCTOBER 2025

SALT CREEK DRILLING RESULTS AND PROJECT UPDATE

Omnia Metals Group Ltd (ASX: OM1) ("OM1" or the "Company") advises that it has received all assay results from the completed 941m Slim Line Reverse Circulation ("SLRC") drill program across its Salt Creek Project (the "Project"), located north-east of Kalgoorlie.

The program was designed as a first-pass geochemical and geological evaluation of multiple targets generated from previous soil sampling and geophysical interpretation across the Project.

Results Summary

Assay results from the program returned low levels of gold and base metals, with values typically at or near background concentrations across the tested areas.

- **Gold (Au):** All samples returned <0.005 ppm Au.
- **Copper (Cu):** Ranged from 15–109 ppm.
- **Zinc (Zn):** Ranged from 10–800 ppm.
- **Nickel (Ni):** Ranged from 20–130 ppm.
- **Cobalt (Co):** Generally <30 ppm.
- **Pathfinders (As, Sb, Bi):** Below detection limits in most samples.

All holes from the recent program are reported in this release. Full drill collar details are provided in Appendix 1.

Omnia's Executive Chairman, Patric Glovac, commented:

"While the results from this first-pass percussion program have not identified any significant mineralisation, the data is an important step in systematically testing and understanding the geology across our Salt Creek tenement package."

"We remain committed to applying a disciplined exploration approach focused on defining high-quality drill targets for follow-up work."

Interpretation

The low metal tenor observed in this initial percussion program suggests the sampled areas are largely unmineralised or distal to potential mineralised systems.

However, the results provide valuable litho-geochemical and geochemical context that will be integrated with existing structural, magnetic, and geological datasets to refine the Company's targeting model.

Omnia will continue to evaluate the structural corridors and untested geophysical anomalies identified from previous surveys, which remain prospective for gold and base metal mineralisation at depth.

For personal use only

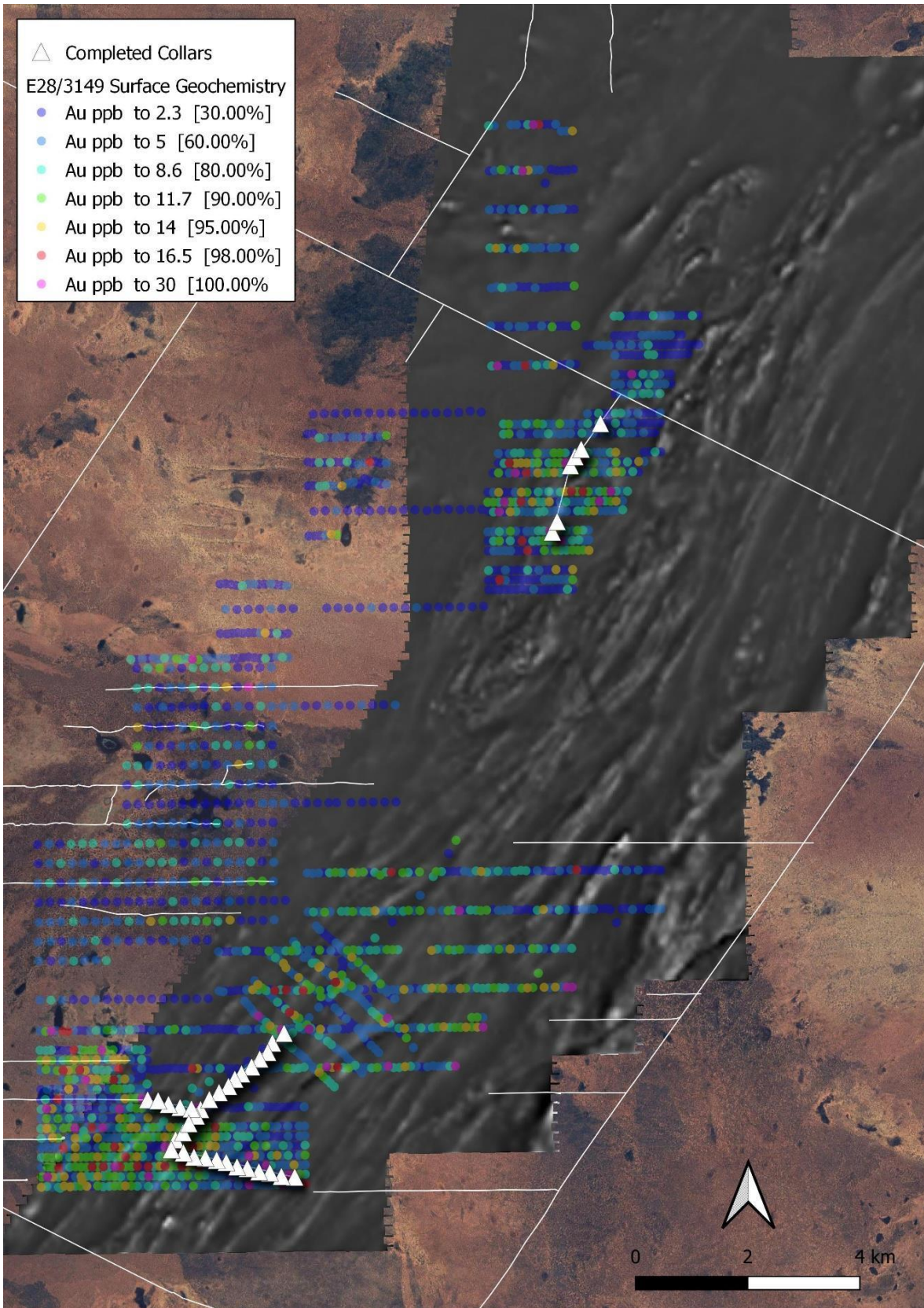


Figure 1: Completed RC Collars at Omnia's Salt Creek Project (EL28/3149)

Next Steps

- Integration of assay results with existing geophysical and mapping datasets.
- Review of untested structural and magnetic anomalies proximal to historical workings.
- Planning of potential follow-up RC or diamond drilling on refined targets, subject to further assessment.

Strategic Outlook

Omnia Metals Group continues to actively assess and review exploration and acquisition opportunities that are complementary to its existing portfolio. The Company remains focused on building a pipeline of high-quality projects that align with its strategic growth objectives and commodity focus.

In parallel with its ongoing exploration programs in Western Australia, Omnia is advancing its efforts to identify and secure additional gold and rare earth element (**REE**) projects, particularly within the United States, where demand for critical minerals continues to grow. This strategy is designed to strengthen Omnia's exposure to key growth sectors, diversify its project base, and position the Company to capitalise on future developments in the global energy and technology transition.

- ENDS -

This announcement is approved for release by the Board of Omnia Metals Group Ltd.

For further information please contact:

INVESTORS

Quinton Meyers

NON-EXECUTIVE DIRECTOR & COMPANY SECRETARY

E. Quinton@omniametals.com.au

ABOUT OMNIA METALS GROUP

Omnia Metals Group Ltd (ASX:OM1) goal is to become a leader in the exploration, and development, of future facing commodities used in advanced technologies and essential to the global energy transition.

FORWARD LOOKING STATEMENTS

Statements contained in this release, particularly those regarding possible or assumed future performance, costs, dividends, production levels or rates, prices, resources, reserves or potential growth of Omnia Metals Group Ltd, are, or may be, forward looking statements.

Such statements relate to future events and expectations and, as such, involve known and unknown risks and uncertainties. Actual results and developments may differ materially from those expressed or implied by these forward-looking statements depending on a variety of factors.

COMPETENT PERSONS STATEMENT

The information in this report which relates to Exploration Results is based on information compiled by Dr. James Warren, a Competent Person who is a member of the Australian Institute of Geoscientists. Dr. Warren has sufficient experience relevant to the style of mineralisation and type of deposit under consideration and to the activity he is undertaking to qualify as a Competent Person as defined in the 2012 Edition of the "Australian Code of Reporting of Exploration Results, Mineral Resources and Ore Reserves". Dr. Warren consents to the inclusion in this report of the matters based on the information in the form and context in which it appears.

Appendix 1.

Table 1: Drillhole Table

Hole ID	Easting	Northing	Azimuth	Dip	Depth	Comment ¹
AFRC001	612505.3	6641932	000° (north)	-90°	40	No significant intercepts
AFRC002	613446.8	6641724	000° (north)	-90°	35	No significant intercepts
AFRC003	615111.7	6640317	000° (north)	-90°	36	No significant intercepts
AFRC004	614873.9	6640334	000° (north)	-90°	47	No significant intercepts
AFRC005	614668.8	6640410	000° (north)	-90°	14	No significant intercepts
AFRC006	614474	6640433	000° (north)	-90°	7	No significant intercepts
AFRC007	614268.8	6640503	000° (north)	-90°	18	No significant intercepts
AFRC008	614084.8	6640539	000° (north)	-90°	28	No significant intercepts
AFRC009	613893.7	6640632	000° (north)	-90°	18	No significant intercepts
AFRC010	613723.1	6640679	000° (north)	-90°	16	No significant intercepts
AFRC011	613522.5	6640726	000° (north)	-90°	15	No significant intercepts
AFRC012	613319	6640747	000° (north)	-90°	9	No significant intercepts
AFRC013	613133.2	6640835	000° (north)	-90°	39	No significant intercepts
AFRC014	612915.4	6640903	000° (north)	-90°	20	No significant intercepts
AFRC015	614952.3	6643273	000° (north)	-90°	40	No significant intercepts
AFRC016	613283.9	6641738	000° (north)	-90°	18	No significant intercepts
AFRC017	612993.9	6641105	000° (north)	-90°	15	No significant intercepts
AFRC018	613130.7	6641252	000° (north)	-90°	27	No significant intercepts
AFRC019	613234.3	6641436	000° (north)	-90°	39	No significant intercepts
AFRC020	613367.7	6641591	000° (north)	-90°	24	No significant intercepts
AFRC021	614741.7	6643076	000° (north)	-90°	40	No significant intercepts
AFRC022	614656.2	6642884	000° (north)	-90°	10	No significant intercepts
AFRC023	614512.4	6642750	000° (north)	-90°	51	No significant intercepts
AFRC024	614366.1	6642589	000° (north)	-90°	62	No significant intercepts
AFRC025	614184.9	6642450	000° (north)	-90°	20	No significant intercepts
AFRC026	614063.8	6642340	000° (north)	-90°	13	No significant intercepts
AFRC027	613949.6	6642193	000° (north)	-90°	9	No significant intercepts
AFRC028	613779.7	6642069	000° (north)	-90°	5	No significant intercepts
AFRC029	613605.3	6641929	000° (north)	-90°	3	No significant intercepts
AFRC030	613082	6641769	000° (north)	-90°	10	No significant intercepts
AFRC031	612875.8	6641833	000° (north)	-90°	37	No significant intercepts
AFRC032	612692.1	6641913	000° (north)	-90°	22	No significant intercepts
AFRC033	619849.6	6653522	000° (north)	-90°	2	No significant intercepts
AFRC034	619938.6	6653738	000° (north)	-90°	34	No significant intercepts
AFRC035	619957.2	6653941	000° (north)	-90°	40	No significant intercepts
AFRC036	620186.2	6654884	000° (north)	-90°	10	No significant intercepts
AFRC037	620272.4	6655067	000° (north)	-90°	10	No significant intercepts
AFRC038	620384.5	6655219	000° (north)	-90°	36	No significant intercepts
AFRC039	620733.9	6655743	000° (north)	-90°	24	No significant intercepts

1. No significant intercepts were returned using the following reporting criteria:
 - a. Au ≥ 0.5 g/t (min width 1 m, max internal dilution 2 m);
 - b. Cu ≥ 0.20% (min width 2 m, max internal dilution 2 m);
 - c. Zn ≥ 1.0%;
 - d. Ni ≥ 0.30%; and
 - e. Co ≥ 500 ppm.

All holes from the program are reported in this release; full collar and assay information is provided in Appendix 1.

For personal use only

JORC Code, 2012 Edition – Table 1 report template

Section 1 Sampling Techniques and Data

(Criteria in this section apply to all succeeding sections.)

Criteria	JORC Code explanation	Commentary
Sampling techniques	<ul style="list-style-type: none"> Nature and quality of sampling (eg cut channels, random chips, or specific specialised industry standard measurement tools appropriate to the minerals under investigation, such as down hole gamma sondes, or handheld XRF instruments, etc). These examples should not be taken as limiting the broad meaning of sampling. Include reference to measures taken to ensure sample representivity and the appropriate calibration of any measurement tools or systems used. Aspects of the determination of mineralisation that are Material to the Public Report. In cases where 'industry standard' work has been done this would be relatively simple (eg 'reverse circulation drilling was used to obtain 1 m samples from which 3 kg was pulverised to produce a 30 g charge for fire assay'). In other cases more explanation may be required, such as where there is coarse gold that has inherent sampling problems. Unusual commodities or mineralisation types (eg submarine nodules) may warrant disclosure of detailed information. 	<ul style="list-style-type: none"> The sampling was carried out using slim-line reverse-circulation (RC) drilling. 39 holes for 943m were drilled as part of the program. Drill spoils were collected via the onboard cyclone at intervals of every 1m and placed in piles for sampling by OM1 geologists. Sampling involved collecting ~2kg of sample material via scoop sampling of the drill spoils and placing the material into numbered calico bags. 4m composite samples were collected during this program. Sampling was carried out under the Company's protocols and QAQC procedures as per industry best practice. See further details below. Slim-line RC holes were drilled with a 90mm blade bit to obtain 1m samples from which a 2-3kg sample that was sent to the laboratory for 64 element geochemical analysis and gold assays.
Drilling techniques	<ul style="list-style-type: none"> Drill type (eg core, reverse circulation, open-hole hammer, rotary air blast, auger, Bangka, sonic, etc) and details (eg core diameter, triple or standard tube, depth of diamond tails, face-sampling bit or other type, whether core is oriented and if so, by what method, etc). 	<ul style="list-style-type: none"> The sampling was carried out using slim-line reverse-circulation (RC) drilling. Slim-line RC holes were drilled with a 90mm blade bit The drilling was completed by Hornet Drilling
Drill sample recovery	<ul style="list-style-type: none"> Method of recording and assessing core and chip sample recoveries and results assessed. Measures taken to maximise sample recovery and ensure representative nature of the samples. Whether a relationship exists between sample recovery and grade and whether sample bias may have occurred due to preferential loss/gain of fine/coarse material. 	<ul style="list-style-type: none"> All samples collected were dry. Samples recoveries were generally >90%. Blade bits and dust suppression were used to minimise sample loss. RC samples are collected through a cyclone and deposited in spoil piles with lab samples up to 3kg collected to enable a full sample pulverisation. No sample bias or material loss was observed to have taken place during drilling activities.
Logging	<ul style="list-style-type: none"> Whether core and chip samples have been geologically and geotechnically logged to a level of detail to support appropriate Mineral Resource estimation, mining studies and metallurgical studies. Whether logging is qualitative or quantitative in nature. Core (or costean, channel, etc) photography. The total length and percentage of the relevant intersections logged. 	<ul style="list-style-type: none"> All chips were geologically logged by Company geologists using the Omnia logging scheme. No geotechnical logging was undertaken. Logging of drill chips records lithology, mineralogy, mineralisation, weathering, colour and other features of the samples. Representative samples, not for assay samples, are wet-sieved and stored in a chip trays for geological reference.

Criteria	JORC Code explanation	Commentary
Sub-sampling techniques and sample preparation	<ul style="list-style-type: none"> • <i>If core, whether cut or sawn and whether quarter, half or all core taken.</i> • <i>If non-core, whether riffled, tube sampled, rotary split, etc and whether sampled wet or dry.</i> • <i>For all sample types, the nature, quality and appropriateness of the sample preparation technique.</i> • <i>Quality control procedures adopted for all sub-sampling stages to maximise representivity of samples.</i> • <i>Measures taken to ensure that the sampling is representative of the in situ material collected, including for instance results for field duplicate/second-half sampling.</i> • <i>Whether sample sizes are appropriate to the grain size of the material being sampled.</i> 	<ul style="list-style-type: none"> • One-metre drill samples from a rig mounted cyclone and an average 2-3kg sample were collected at the rig and placed into a pre- numbered calico bag. • 4m composite samples were collected by company geologists and submitted for initial analysis. • Sample sizes are considered appropriate to give an indication of mineralisation given the particle size and the preference to keep the sample weight below a targeted 3kg mass. • Samples were dried, crushed (~2mm) and rotary divided where required. Pulverisation is undertaken by LM1 mill, and bowls are barren-washed after each sample. • Duplicate field samples were collected at a rate of approximately 1 in 30 samples. • At the laboratory, regular Repeats and Lab Check samples are assayed and results are required to pass internal lab protocols. • The laboratory inserted certified reference material and blanks into the analytical sequence and analysed lab duplicates. These appear to confirm accuracy and precision of the sample assays.
Quality of assay data and laboratory tests	<ul style="list-style-type: none"> • <i>The nature, quality and appropriateness of the assaying and laboratory procedures used and whether the technique is considered partial or total.</i> • <i>For geophysical tools, spectrometers, handheld XRF instruments, etc, the parameters used in determining the analysis including instrument make and model, reading times, calibrations factors applied and their derivation, etc.</i> • <i>Nature of quality control procedures adopted (eg standards, blanks, duplicates, external laboratory checks) and whether acceptable levels of accuracy (ie lack of bias) and precision have been established.</i> 	<ul style="list-style-type: none"> • Assaying was completed by Australian Laboratory Services Pty Ltd, 50 Baile Rd, Canning Vale WA 6155. • Assay techniques included; <ul style="list-style-type: none"> ○ ME-ICP61 - 34 element four acid ICP-AES ○ Au-ICP21 – Au 30g FA ICP-AES finish • Omnia protocol for slim-line RC programs is for Field Duplicates to be inserted at a rate of approximately 1 in 30. • At the Lab, regular assay Repeats Lab Standards, Checks and Blanks are analysed. • Results of the Field and Lab QAQC were checked on assay receipt using QAQC software. All assays passed QAQC protocols, showing no significant level of contamination or sample bias. Analysis of field duplicate assay data suggests appropriate levels of sampling precision, with less than 10% pair difference.
Verification of sampling and assaying	<ul style="list-style-type: none"> • <i>The verification of significant intersections by either independent or alternative company personnel.</i> • <i>The use of twinned holes.</i> • <i>Documentation of primary data, data entry procedures, data verification, data storage (physical and electronic) protocols.</i> • <i>Discuss any adjustment to assay data.</i> 	<ul style="list-style-type: none"> • All drilling results were collated and checked by Company geologists. • All field logging is directly entered into a spreadsheet, then electronically to the Database Manager in the office. Assay files are received electronically from the Laboratory. All data is stored in an Access database system, and maintained by the Database Manager

Criteria	JORC Code explanation	Commentary
Location of data points	<ul style="list-style-type: none"> • Accuracy and quality of surveys used to locate drill holes (collar and down-hole surveys), trenches, mine workings and other locations used in Mineral Resource estimation. • Specification of the grid system used. • Quality and adequacy of topographic control. 	<ul style="list-style-type: none"> • The coordinate system used is MGA_94 Zone 51. • A handheld GPS was used to record the position of the auger holes. Horizontal accuracy was +/- 3 metres. • A DTM model acquired through the Elevation Information System (ELVIS) was used in GIS software to establish topographical control. • Location accuracy at collars is considered adequate for this stage of exploration.
Data spacing and distribution	<ul style="list-style-type: none"> • Data spacing for reporting of Exploration Results. • Whether the data spacing and distribution is sufficient to establish the degree of geological and grade continuity appropriate for the Mineral Resource and Ore Reserve estimation procedure(s) and classifications applied. • Whether sample compositing has been applied. 	<ul style="list-style-type: none"> • All drill holes were vertical and completed to refusal. • The drill program was designed as an initial scout program with drill lines transecting areas of interest as determined by Company geologists. • Drill holes were approx. 200m apart along drill lines
Orientation of data in relation to geological structure	<ul style="list-style-type: none"> • Whether the orientation of sampling achieves unbiased sampling of possible structures and the extent to which this is known, considering the deposit type. • If the relationship between the drilling orientation and the orientation of key mineralised structures is considered to have introduced a sampling bias, this should be assessed and reported if material. 	<ul style="list-style-type: none"> • Unable to be determined at this stage.
Sample security	<ul style="list-style-type: none"> • The measures taken to ensure sample security. 	<ul style="list-style-type: none"> • Samples were transported to the lab by Company geologists.
Audits or reviews	<ul style="list-style-type: none"> • The results of any audits or reviews of sampling techniques and data. 	<ul style="list-style-type: none"> • No external audits or reviews of the data were completed

Section 2 Reporting of Exploration Results

(Criteria listed in the preceding section also apply to this section.)

Criteria	JORC Code explanation	Commentary
<i>Mineral tenement and land tenure status</i>	<ul style="list-style-type: none"> <i>Type, reference name/number, location and ownership including agreements or material issues with third parties such as joint ventures, partnerships, overriding royalties, native title interests, historical sites, wilderness or national park and environmental settings.</i> <i>The security of the tenure held at the time of reporting along with any known impediments to obtaining a licence to operate in the area.</i> 	<ul style="list-style-type: none"> Drilling was completed on Omnia tenement E28/3149
<i>Exploration done by other parties</i>	<ul style="list-style-type: none"> <i>Acknowledgment and appraisal of exploration by other parties.</i> 	<ul style="list-style-type: none"> Historical exploration was previously completed by IGO and has been released as part of the Company Prospectus dated January 2022. Exploration in the project area is only recorded since 2006. The discovery of the Tropicana gold deposit in 2005 was the catalyst for significantly increased exploration in the Albany – Fraser Mobile Belt. It should be noted that exploration within the tenements is a small sub-set of much wider exploration programs completed by Independence Gold NL and AngloGold Australia in the greater regional area. AngloGold and Independence operated the Tropicana JV, a 50:50 JV. Exploration consists of geochemical auger sampling and follow-up air-core drilling programs.
<i>Geology</i>	<ul style="list-style-type: none"> <i>Deposit type, geological setting and style of mineralisation.</i> 	<ul style="list-style-type: none"> E28/3149 is interpreted to fall within Biranup Zone with bedrock lithologies including gneisses (monzogranitic to syenogranitic), meta-granitoids and migmatites.
<i>Drill hole Information</i>	<ul style="list-style-type: none"> <i>A summary of all information material to the understanding of the exploration results including a tabulation of the following information for all Material drill holes:</i> <ul style="list-style-type: none"> <i>easting and northing of the drill hole collar</i> <i>elevation or RL (Reduced Level – elevation above sea level in metres) of the drill hole collar</i> <i>dip and azimuth of the hole</i> <i>down hole length and interception depth</i> <i>hole length.</i> <i>If the exclusion of this information is justified on the basis that the information is not Material and this exclusion does not detract from the understanding of the report, the Competent Person should clearly explain why this is the case.</i> 	<ul style="list-style-type: none"> Tables are provided in the body of the text

Criteria	JORC Code explanation	Commentary
Data aggregation methods	<ul style="list-style-type: none"> In reporting Exploration Results, weighting averaging techniques, maximum and/or minimum grade truncations (eg cutting of high grades) and cut-off grades are usually Material and should be stated. Where aggregate intercepts incorporate short lengths of high grade results and longer lengths of low grade results, the procedure used for such aggregation should be stated and some typical examples of such aggregations should be shown in detail. The assumptions used for any reporting of metal equivalent values should be clearly stated. 	<ul style="list-style-type: none"> No data aggregation methods applied.
Relationship between mineralisation widths and intercept lengths	<ul style="list-style-type: none"> These relationships are particularly important in the reporting of Exploration Results. If the geometry of the mineralisation with respect to the drill hole angle is known, its nature should be reported. If it is not known and only the down hole lengths are reported, there should be a clear statement to this effect (eg 'down hole length, true width not known'). 	<ul style="list-style-type: none"> Unknown at this stage of exploration as no mineralisation identified.
Diagrams	<ul style="list-style-type: none"> Appropriate maps and sections (with scales) and tabulations of intercepts should be included for any significant discovery being reported These should include, but not be limited to a plan view of drill hole collar locations and appropriate sectional views. 	<ul style="list-style-type: none"> Appropriate diagrams are provided in the body of the text
Balanced reporting	<ul style="list-style-type: none"> Where comprehensive reporting of all Exploration Results is not practicable, representative reporting of both low and high grades and/or widths should be practiced to avoid misleading reporting of Exploration Results. 	<ul style="list-style-type: none"> No mineralisation was detected in the drilling program
Other substantive exploration data	<ul style="list-style-type: none"> Other exploration data, if meaningful and material, should be reported including (but not limited to): geological observations; geophysical survey results; geochemical survey results; bulk samples – size and method of treatment; metallurgical test results; bulk density, groundwater, geotechnical and rock characteristics; potential deleterious or contaminating substances. 	<ul style="list-style-type: none"> All relevant data has been reported
Further work	<ul style="list-style-type: none"> The nature and scale of planned further work (eg tests for lateral extensions or depth extensions or large-scale step-out drilling). Diagrams clearly highlighting the areas of possible extensions, including the main geological interpretations and future drilling areas, provided this information is not commercially sensitive. 	<ul style="list-style-type: none"> The prospectivity of the tenement has been downgraded due to the exploration and no further work is currently planned