

For personal use only



OCTOBER 2025 | DESOTORESOURCES.COM | ASX:DES

Corporate Presentation: DeSoto raises A\$14m as drilling underway in the Siguiri Basin



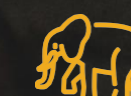
Guinea's Siguiri Basin



Dominant Land Position



Drilling imminent



Elephant Country

Important Notices & Disclaimer



DeSoto Resources Limited ACN 658 510 242 (DeSoto or the Company) is the issuer of this presentation. The issue of this presentation is intended only for the person or entity to which it has been transmitted.

These presentation materials and any accompanying verbal presentation (together, the Presentation Materials) have been prepared by DeSoto Resources Limited (Company) as at 10th October 2025 and statements are current only as at that date. Information in the Presentation Materials remains subject to change without notice. The Company has no responsibility or obligation to inform you of any matter arising or coming to its notice, after the date of this document, which may affect any matter referred to in this document. By receiving the Presentation Materials, you acknowledge and represent to the Company that you have read, understood and accepted the terms of this disclaimer. It is the responsibility of all recipients of these Presentation Materials to obtain all necessary approvals to receive these Presentation Materials and receipt of the Presentation Materials will be taken by the Company to constitute a representation and warranty that all relevant approvals have been obtained.

These Presentation Materials are for information purposes only. The Presentation Materials do not comprise a prospectus, product disclosure statement or other offering document under Australian law (and will not be lodged with the Australian Securities and Investments Commission) or any other law. The Presentation Materials also do not constitute or form part of any invitation, offer for sale or subscription or any solicitation for any offer to buy or subscribe for any securities nor shall they or any part of them form the basis of or be relied upon in connection therewith or act as any inducement to enter into any contract or commitment with respect to securities. In particular, these Presentation Materials do not constitute an offer to sell or a solicitation to buy, securities in the United States of America.

Not Investment Advice

The Presentation Materials are not investment or financial product advice (nor tax, accounting or legal advice) and are not intended to be used for the basis of making an investment decision. Recipients should obtain their own advice before making any investment decision.

Summary Information

The Presentation Materials do not purport to be all inclusive or to contain all information about the Company or any of the assets, current or future, of the Company. The Presentation Materials contain summary information about the Company and its activities which is current as at the date of the Presentation Materials. The information in the Presentation Materials is of a general nature and does not purport to contain all the information which a prospective investor may require in evaluating a possible investment in the Company or that would be required in a prospectus or product disclosure statement or other offering document prepared in accordance with the requirements of Australian law or the laws of any other jurisdiction, including the United States of America.

While reasonable care has been taken in relation to the preparation of the Presentation Materials, none of the Company or its directors, officers, employees, contractors, agents, or advisers nor any other person (Limited Party) guarantees or makes any representations or warranties, express or implied, as to or takes responsibility for, the accuracy, reliability, completeness or fairness of the information, opinions, forecasts, reports, estimates and conclusions contained in this document. No Limited Party represents or warrants that this document is complete or that it contains all information about the Company that a prospective investor or purchaser may require in evaluating a possible investment in the Company or acquisition of shares in the Company.

To the maximum extent permitted by law, each Limited Party expressly disclaims any and all liability, including, without limitation, any liability arising out of fault or negligence, for any loss arising from the use of or reliance on information contained in this document including representations or warranties or in relation to the accuracy or completeness of the information, statements, opinions, forecasts, reports or other matters, express or implied, contained in, arising out of or derived from, or for omissions from, this document including, without limitation, any financial information, any estimates or projections and any other financial information derived therefrom.

Forward-looking statements

Certain statements contained in the Presentation Materials, including information as to the future financial or operating performance of the Company and its projects, are forward looking statements. Such forward looking statements involve known and unknown risks, uncertainties, assumptions and other important factors, many of which are beyond the control of the Company and which may cause actual results, performance or achievements to differ materially from those expressed or implied by such statements. Forward looking statements are provided as a general guide only, and should not be relied on as an indication or guarantee of future performance. Given these uncertainties, recipients are cautioned to not place undue reliance on any forward looking statement.

Subject to any continuing obligations under applicable law the Company disclaims any obligation or undertaking to disseminate any updates or revisions to any forward looking statements in this document to reflect any change in expectations in relation to any forward looking statements or any change in events, conditions or circumstances on which any such statement is based.

JORC Disclaimer

The Presentation Materials are not a "public report" for the purposes of 2012 Edition of the 'Australasian Code for Reporting of Exploration results, Mineral Resources and Ore Reserves' (JORC Code). As such, the information in this Presentation Materials that relate to exploration results, exploration targets, mineral resources and ore reserves is not reported in accordance with the JORC Code and has not been reviewed by a competent person for the purposes of the JORC Code.

The Company confirms that it is not aware of any new information as at the date of the Presentation Materials that materially affects the information included in the Presentation Materials and that all material assumptions and technical parameters underpinning the estimates in the Company's previous announcement[s] continue to apply and have not material changed.

Competent Persons Statement

The information in this report that relates to exploration results is based on and fairly represents information and supporting documentation prepared by Mrs Rebecca Morgan.

Mrs Morgan is an employee of the company, is a member of the Australian Institute of Geoscientists and has sufficient experience of relevance to the styles of mineralisation and types of deposits under consideration, and to the activities undertaken to qualify as Competent Person as defined in the 2012 Edition of the Joint Ore Reserves Committee (JORC) Australasian Code for Reporting of Exploration Results, Mineral Resources and Ore Reserves. Mrs Morgan consents to the inclusion in this report of the matters based on this information in the form and context in which they appear.

The Company confirms that it is not aware of any new information or data that materially affects the information included in the previous announcements.

One of West Africa's most accomplished teams returns to the Siguiiri Basin

Dominant 1,000km²
Guinea's Siguiiri Basin, one of the largest landholders

Guinea's golden team
Former PDI discovery team

Strong cash position
c.A\$15.5m as drilling underway in Guinea

Historic high-grade & shallow drill hits

- NDI-02
18m @ 11.8 g/t Au (48m)
incl. **1m @ 78.84 g/t Au** (50m)
3m @ 40.4 g/t Au (62m)
- NDI-39
4m @ 10.6 g/t Au (33m)
- NDI-15
1m @ 54.1 g/t Au from 5m
- NDI-11
1m @ 4.37 g/t Au from 11m

DES ASX Ann: Acquisition of High-Grade Gold Projects in Guineas Siguiiri (20th February 2025)

GUINEA

Guinea's Siguiiri Basin

- DeSoto Projects
- Siguiiri Basin
- >10 Moz Au Project
- 5 - 10 Moz Au Project
- <5 Moz Au Project
- Major Discovery

ANGLOGOLD ASHANTI NYSE:AU
Siguiiri Mine
Mineral Resource **6.2Moz**
Mineral Reserve* **3.0Moz**

Management MNG:CAS
Tri-k Mine
Mineral Resource **2.3Moz**
Mineral Reserve **1.5Moz**

nordgold LSE:NORD
Lefa Mine
Mineral Reserve **7.9Moz**

predictive discovery ASX:PDI
Bankan Deposit
Mineral Resource **5.4Moz**

HUMMINGBIRD RESOURCES LON:HUM
Kouroussa Mine
Mineral Resource **5.4Moz**
Mineral Reserve **650Koz**

DESOTO RESOURCES
Acquired Gold Projects

Newmont AWALÉ
Odienné Project
Recent Discovery

What's new: exploration, assays and alliances

FUNDED FOR EXPLORATION ACROSS TWO CONTINENTS



Fortuna Alliance (Siguirí Basin, Guinea)

Binding HOA executed with TSX-listed Fortuna Mining Corp

Fortuna to sole-fund exploration to US\$12.5m with HOA key terms defining the sole-funding period as the later of 3 years or US\$12.5m

70/30 JV focused on the Siguirí Basin

DES ASX Ann: DeSoto Enters Exploration Alliance With Fortuna Mining (1st October 2025)



Drilling now underway in Guinea

\$14m strategic placement

\$5m cornerstone investment by Tony Poli as placement rounded out with high-quality investors

Dadjan
maiden drilling underway

Tole
power auger underway ahead of maiden drilling

Timbakouna
permitting completed, with soil sampling underway ahead of maiden drilling

DES ASX Ann: \$14m strategic placement as drilling underway (10th October 2025)



Spectrum Drilling (NT, Australia)

Exploration just got interesting

Sulphides intercepted over multiple intervals

Assays imminent

9 RC/DD holes drilled (3,129m) completed for the 2025 drilling season

DES ASX Ann: Northern Territory Drilling Update (24th September 2025)

Pro-Forma Capital Structure

Subject to completion of the \$14m Placement Announced 9th October 2025

Share price (@ 10 th Oct 25)	\$0.21
DES FPOS <small>(post settlement of T1/T2 placement shares)</small>	276.7M
Options listed:	DESO - 44M @ \$0.25c
Options Unlisted	33.9M @ \$0.25c, 1.6M @ \$0.35c & 1.6M @ \$0.23c
Market Capitalisation	\$58.1m
Enterprise Value	\$42.6m
Cash <small>(post settlement of T1/T2 placement, net of placement fees)</small>	\$15.5m

Major Shareholders

Tony Poli	11.3%
Board and Management	8.4%
Hugh Business Enterprises	6.4%
Lowell Resource Fund	5.4%
Rock the Polo	3.4%
Kumova Group	2.8%

DESOTORESOURCE.COM • ASX:DES

THE LEADERS IN WEST AFRICAN GOLD DISCOVERY



Paul Roberts
Non-Executive Chairman

Founder of Predictive Discovery Limited (ASX:PDI) responsible for discovery of the 5.4Moz Bankan Gold Project in Guinea, the Henty gold deposit and major extensions to the St Dizier tin deposit (both in Tasmania).



Dr Barry Murphy
Non-Executive Director

A structural geologist with more than 20 years experience working in West Africa, Barry played a major role in the regional targeting work that led to the Bankan Discovery.



Chris Swallow
Managing Director

Previously the Corporate Development Officer for Predictive Discovery (ASX:PDI), Chris was also previously CEO at BPM Minerals having been involved in generating and transacting on mineral projects in Australia, USA and South America.



Aime Nganare
Exploration Manager – Africa

Responsible for identifying the Projects DeSoto has acquired in Guinea. Aime was formally the principal geologist for Predictive Discovery with over 18 years of orogenic gold exploration experience in West Africa.

Corporate Partners



Canaccord Genuity



\$14m Placement Highlights

Cornerstone A\$5m investment from prominent Resource Investor Mr. Tony Poli, an early significant investor in Predictive Discovery (ASX:PDI)

Placement strongly bid from funds and institutional investors

Significant buy-in from Corporate Partners taking half their fee in DES stock at placement price

Before Bankan, this team found gold all over West Africa

Other gold discoveries made by PDI with Paul Roberts as MD

Ferkessedougou North (now ASX:MPK)
45m @ 3.16g/t Au (45.9m)
incl. 9m @ 10.31g/t Au

Boundiali (now ASX:AUE)
30m @ 8.30g/t Au
& 28m @ 4.04 g/t Au

Bongou
184,000Oz at 2.58g/t Au



For personal use only

Supercharged Exploration in Guinea's Siguiiri Basin

ONE OF THE WORLD'S MOST PROLIFIC YET UNDER EXPLORED GOLD MINING REGIONS

Guinea's Siguiiri Basin

- DeSoto Projects
- Siguiiri Basin
- Birimian Greenstone Belt
- Gold Mine or Near Development

Binding HOA with TSX-listed **Fortuna Mining Corp.** executed September 2025¹

70/30 JV focused on Guinea's Siguiiri Basin

DeSoto's existing 100%-owned tenements excluded

Fortuna to sole-fund exploration with US\$12.5m

Takeaway: Pairs DeSoto's in-country team with Fortuna's West African capability to chase +2Moz open-pit targets

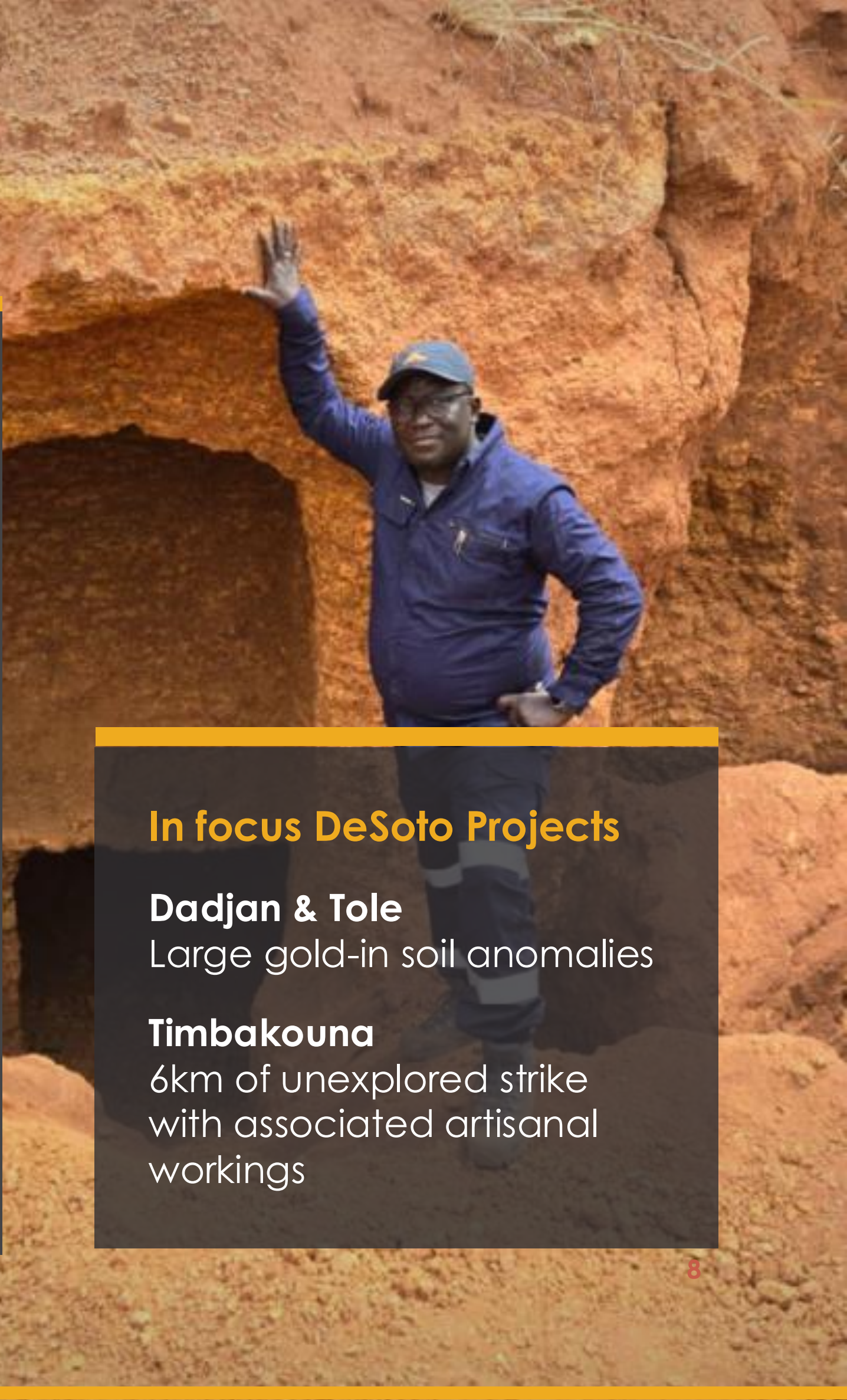
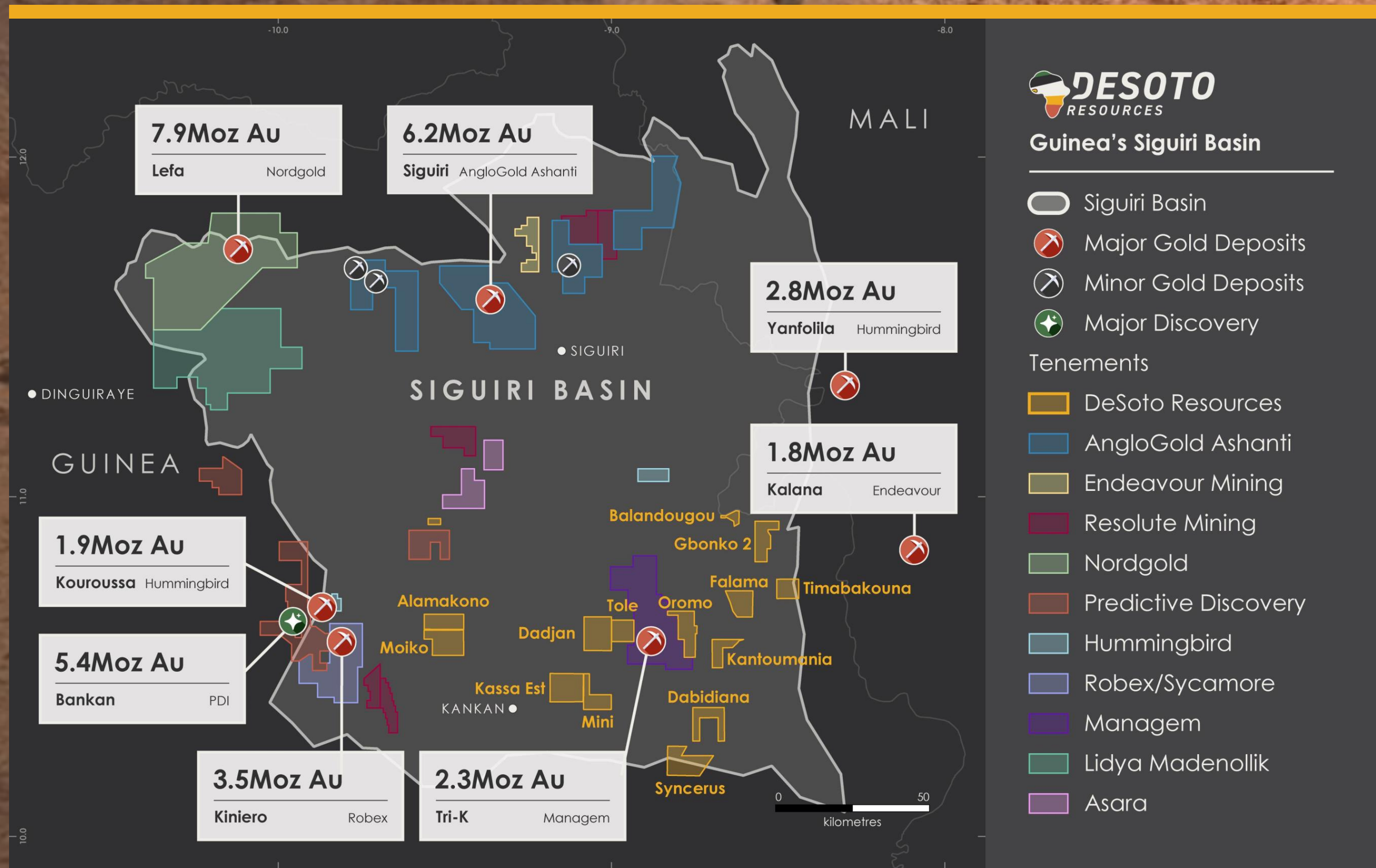
+95Moz has been discovered in West Africa since 2004 vs. Canada's 61Moz, Australia's 29Moz & Colombia 59Moz²



1. DES ASX Ann: DeSoto Enters Exploration Alliance With Fortuna Mining (1st October 2025)
 2. Canaccord Genuity

Hunting for gold in elephant country

HOSTS SEVERAL OPERATING MINES AND MAJOR NEW DISCOVERIES



In focus DeSoto Projects

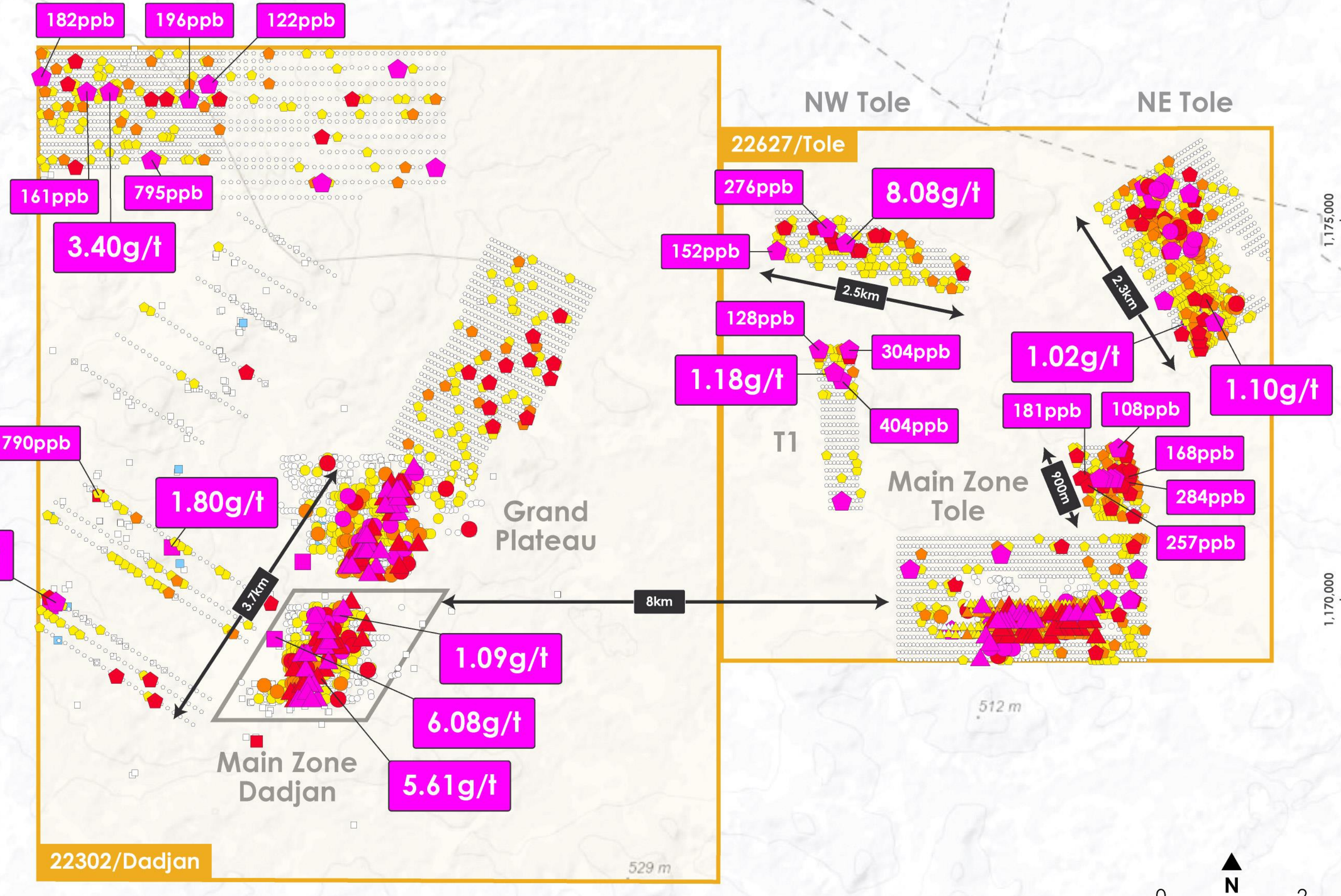
Dadjan & Tole
Large gold-in soil anomalies

Timbakouna
6km of unexplored strike with associated artisanal workings

SIGUIRI PROJECTS

Drilling underway at Dadjan

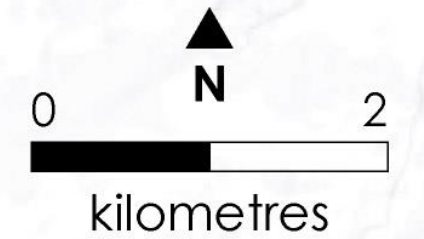
For personal use only



DESOTO RESOURCES
Dadjan & Tole Sampling

DeSoto Permits				Soil Sampling Underway			
DUMP	AUGER	SOILS	PPB AU	ROCK	PPM AU		
●	▲	◆	>100	■	>1.0		
●	▲	◆	50 - 100	■	0.5 - 1.0		
●	▲	◆	25 - 50	■	0.015 - 0.5		
●	▲	◆	10 - 25	■	0 - 0.15		
○	△	◇	0 - 10				

¹ASX Announcement: Results Confirm New and Coherent Zones at Tole (30th September 2025)



490,000 490,000 495,000 500,000 505,000 1,170,000 1,175,000

Dadjan Project

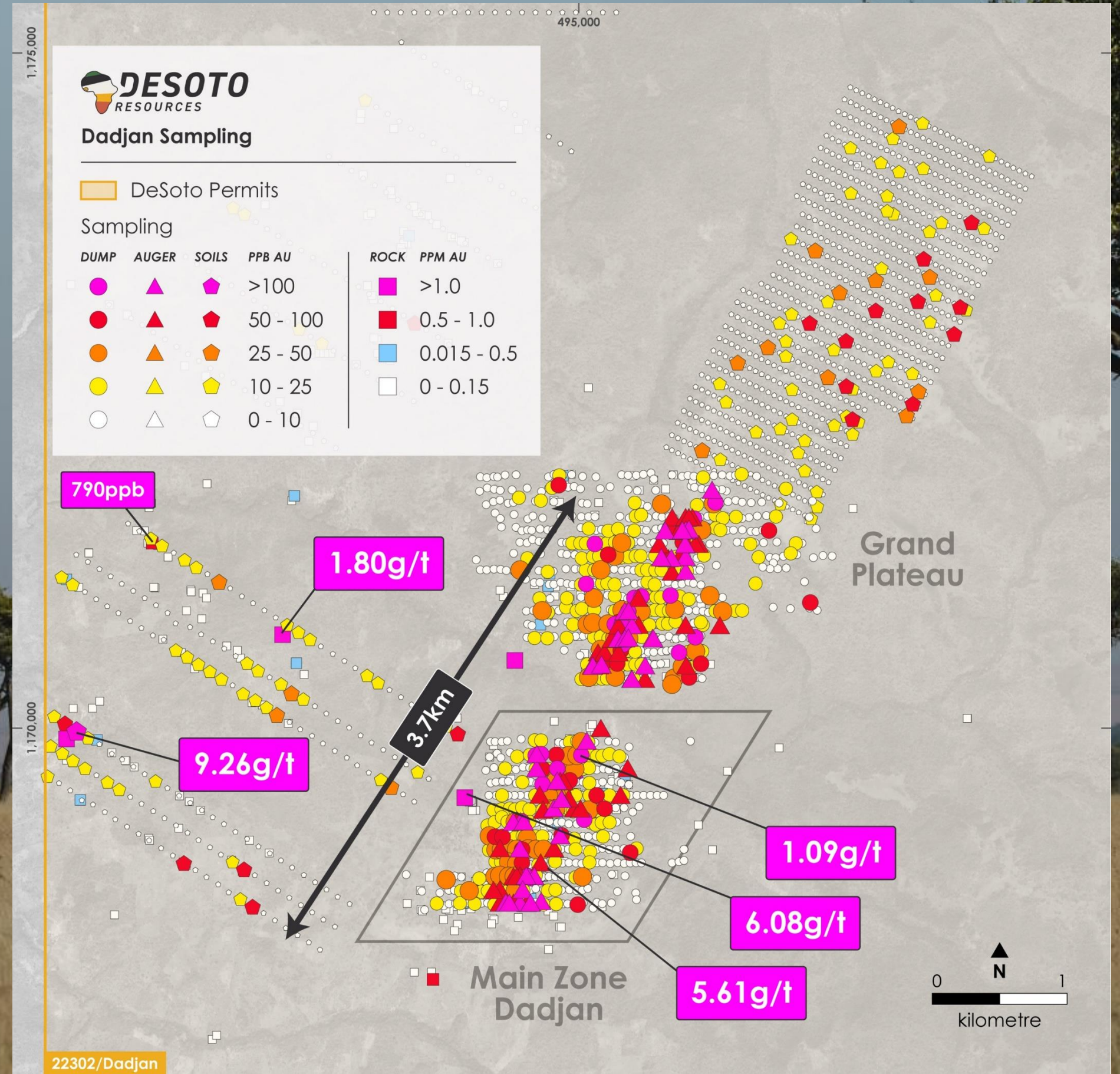
3.6 km-long NE-trending mineralised corridor at Dadjan Main Zone confirmed by trenching and mapping

Rock-chip samples up to 18.44 g/t Au¹

Channel highlights include¹:

- 6 m @ 1.17 g/t Au (incl. 2 m @ 2.1 g/t); and
- 2 m @ 3.95 g/t Au

Initial RC drilling scheduled to start mid-September



SIGUIRI PROJECTS

Tole Project

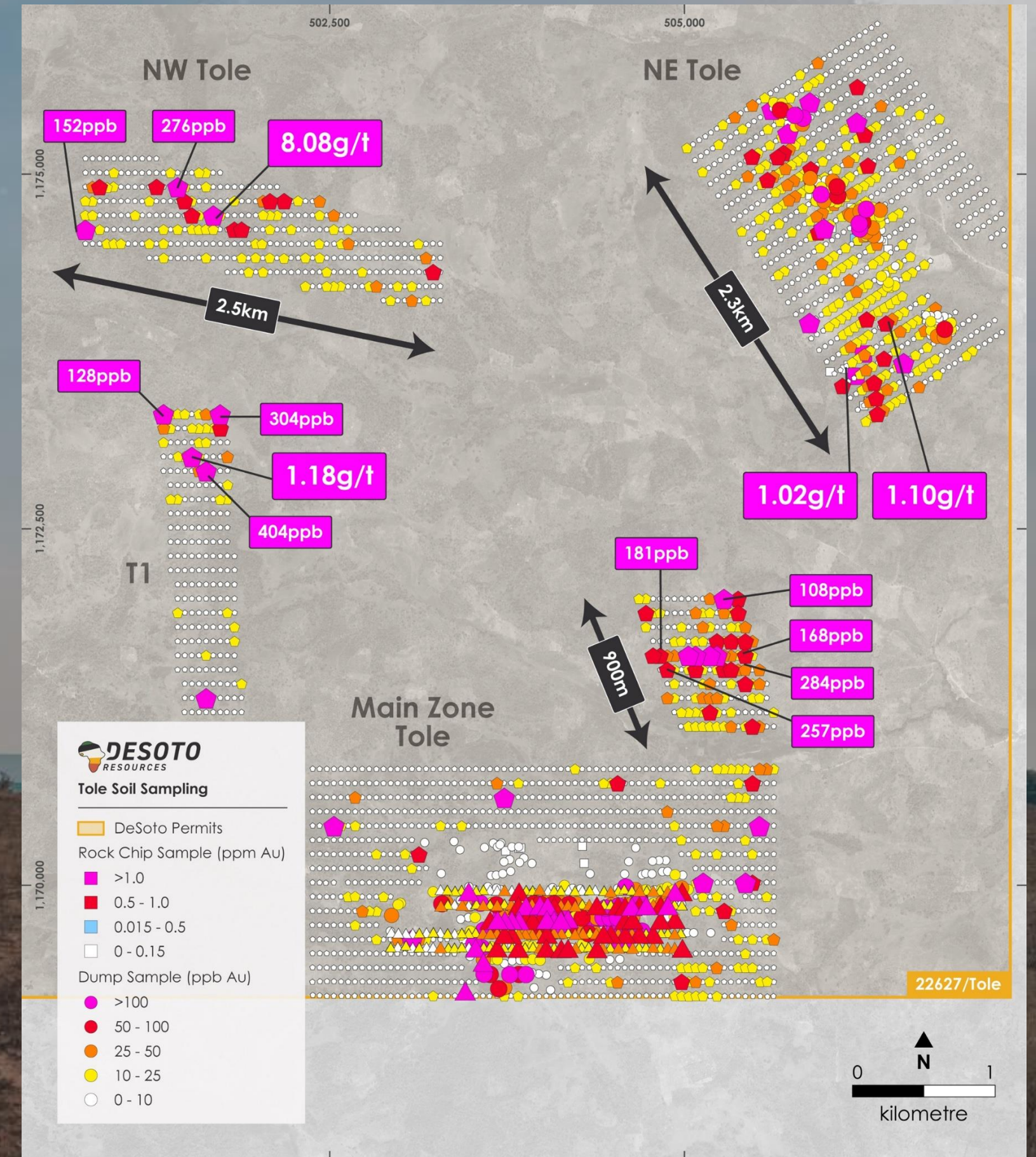
8.5 km east of the 3.6km-long Dadjan gold anomaly
 2.3 km coherent gold-in-soil corridor mapped at NE Tole

Key sampling results¹:

- 7.10 g/t Au (RK30005)
- 3.05 g/t Au (RK30020)
- 4.21 g/t Au (RK30019)
- 3.41 g/t Au (RK30023)

Soil and dump sampling is ongoing.

NE Tole to be drill-tested following power auger, which is now in progress.



SIGUIRI PROJECTS

Timbakouna Project

For personal use only

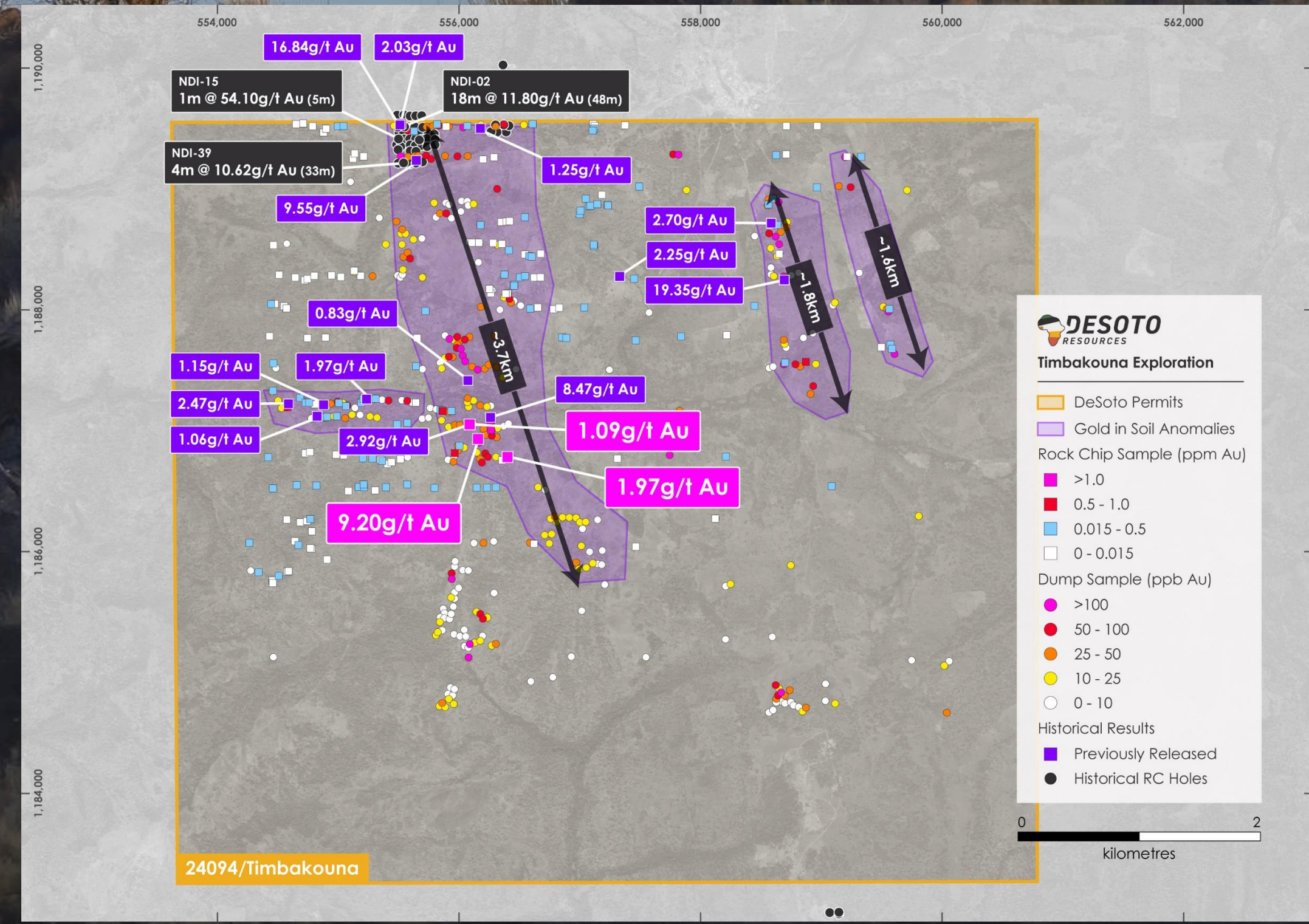
Large untested N-S gold trends
 6 km of strike covered by artisanal workings
 Historic drilling limited to the NE corner returned high-grade gold¹:

- 18m @ 11.8 g/t Au from 48m (NDI-02), incl.
 - 1m @ 78.84 g/t Au from 50m, and
 - 3m @ 40.4g/t Au from 62m
- 4m @ 10.6 g/t Au from 33m (NDI-39)
- 1m @ 54.1 g/t Au from 5m (NDI-15)
- 1m @ 4.37 g/t Au from 11m (Hole NDI-11)

No drilling >80m or into the fresh rock, former drilling confined to the northern boundary

Soil and dump sampling extend gold-in-soil anomalies to 3.7 km with further soil sampling planned.

Fully permitted for drilling

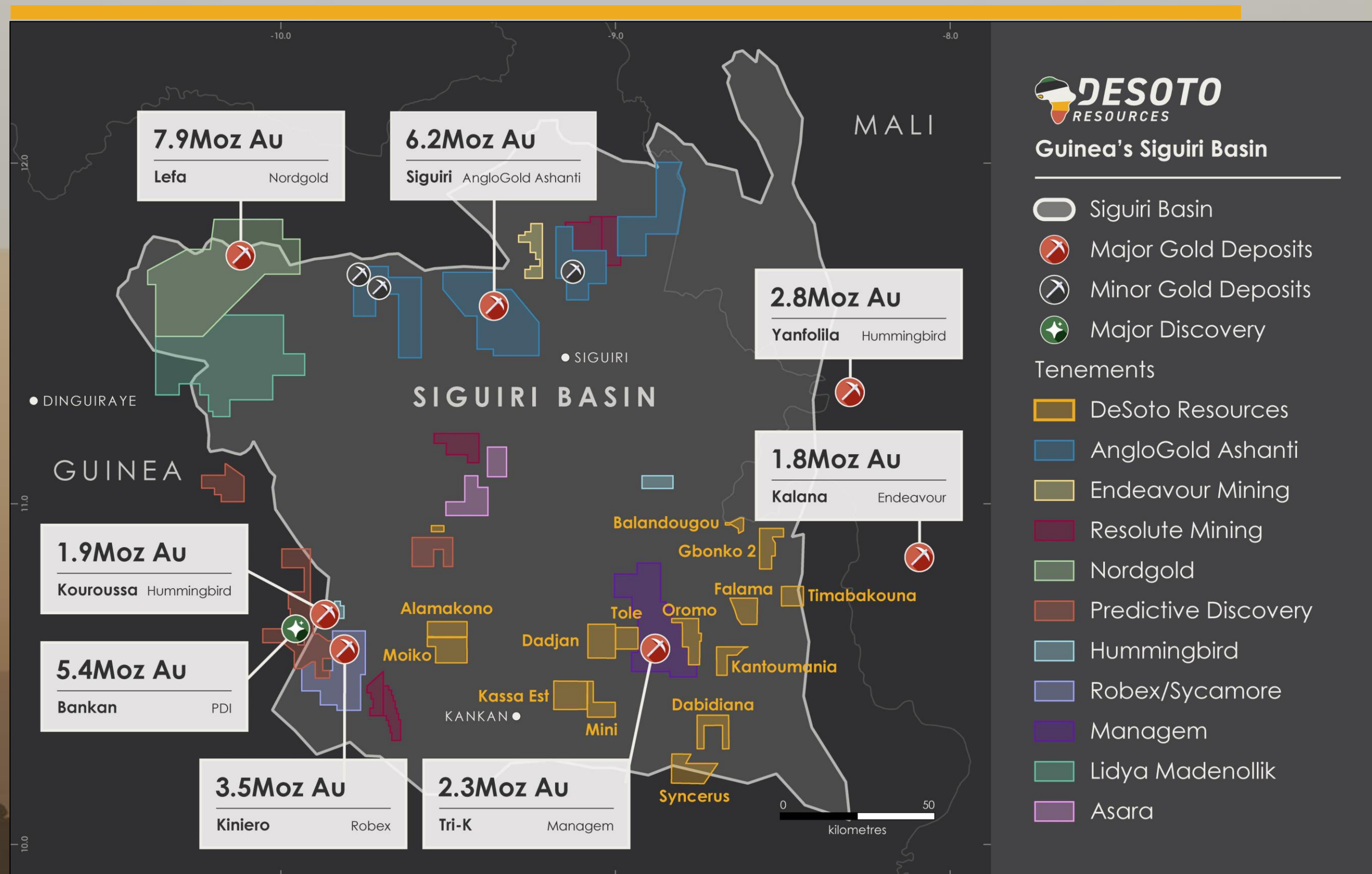


1. DES ASX Ann: Acquisition of High-Grade Gold Projects in Guineas Siguiiri (20th February 2025)
 2. ASX Announcement: Further results from Timbakouna extend gold-in-soil anomalies to 3.7km (22nd May 2025)

Ongoing Regional Exploration

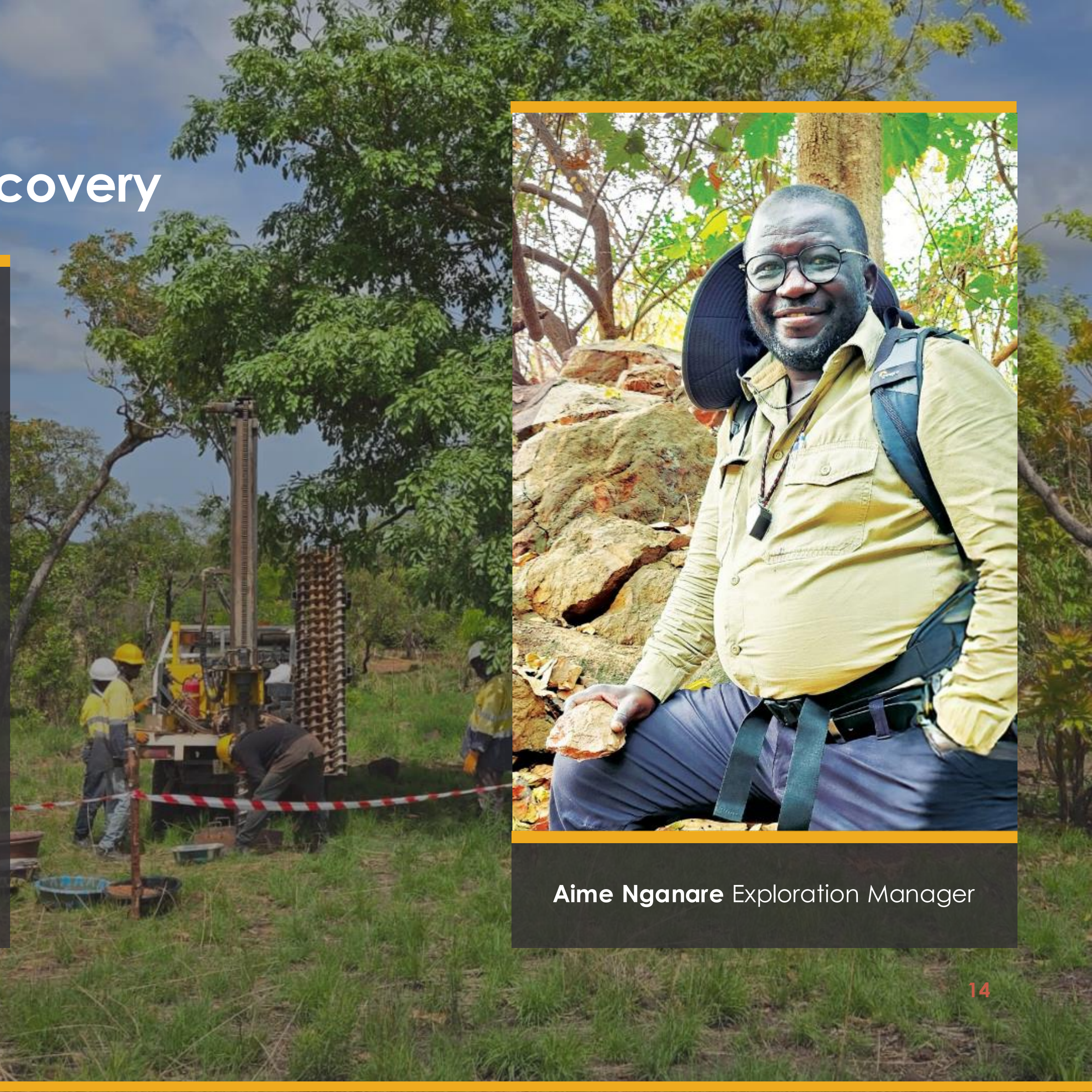
Ongoing work **over 934 km² Siguiiri landholding** with active programs across Tole, Moiko, Alamakono, Oromo, Falama and Dabidiana

Broader reconnaissance advancing (artisanal mapping & BLEG) at Kassa Est, Mini, Oromo, Syncerus, Kantoumanina, Falama, Gbonko 2 & Balandougou



Strategic approach to gold discovery

- **The Siguri Basin is both strongly gold-mineralised and very underexplored**
- **Minerals system approach**
Rolling out broad scale structural targeting across the portfolio
- **Effective geochemistry**
bulk leach extractable gold (BLEG)
stream sediment, soil geochemistry
& power auger to begin immediately
- **Gold Anomalies**
Gold haloes to be targeted
with trenching, channel
sampling, Air Core, RC, and DD
drilling



Aime Nganare Exploration Manager

Big next 6 months: investing in greenfields exploration

- ➔ **10,000 m drilling program underway** at Dadjan, Tole and Timbakouna, further power auger and soil sampling programs also underway at Tole, and soil sampling planned at Timbakouna
- ➔ **Regional exploration** early-stage exploration across Moiko, Alamakono, Syncerus, Kantoumanina, Oromo, Falama, Dabidiana, Mini, Gbonko 2 and Balandougou
- ➔ **Fortuna Mining JV ramp-up** with incorporation of JVCo/GuineaCo, lodgement of initial permit applications, and the mobilisation of field activities on grant
- ➔ **Strong cash position** c.A\$15.5m cash position provides a platform to drill off new and existing targets

Guinea: An Emerging Mining Power House



- ➔ Attracting major global investment for a rapidly expanding mining industry
- ➔ Simandou is the largest mining project in construction globally at >US\$21B¹
- ➔ Uninterrupted mining by global groups for over 40 years

650KM Highway 

Extensive upgrades to the 650 km long highway connecting the capital of Conakry to the gold mining district

670KM Rail Line 

Co-development of a 670 km long rail line between Government & Industry to connect the iron ore district to a deep water port on Atlantic coast

Mining is a nationally significant industry²:

18%	30%	78%	31%
Economy	Government Revenues	Export Revenue	GDP

Est mining code & fiscal regime
 Royalty of 5% + a 1% contribution to local development
 Corporate tax rate of 30%
 State entitled to 15% free carry

\$6.2 Billion 

Rio Tinto committed US \$6.2B in early 2023. This investment is part of the development of the world's largest untapped high-grade iron ore deposit

1. Rio Tinto: Condition on Simandou investment now satisfied - 16 July 2024
 2. Extractive Industries Transparency Initiative, Guinea achieves high score in EITI implementation, 22 February 2022

For personal use only

October 2025 | DESOTORESOURCES.COM | ASX:DES

**FOR FURTHER INFO
PLEASE CONTACT**



Chris Swallow
Managing Director

E: cs@desotoresources.com
P: +61 412 174 882



Guinea's Siguiiri Basin



Dominant Land Position



Drilling imminent



Elephant Country

Spectrum Project, Northern Territory (DES earning into 70%)

Shear-hosted REE-Au-Cu
potential across one of
Australia's great
underexplored mineralised
shear zones



Forward Program, Spectrum

2025 DRILLING PROGRAM COMPLETED, ASSAY COMING



Ten (10) RC/DD holes drilled (totaling 4,298 m) across the Spectrum Project

Sulphides intercepted over multiple intervals

Assay results anticipated in October/ November 2025.

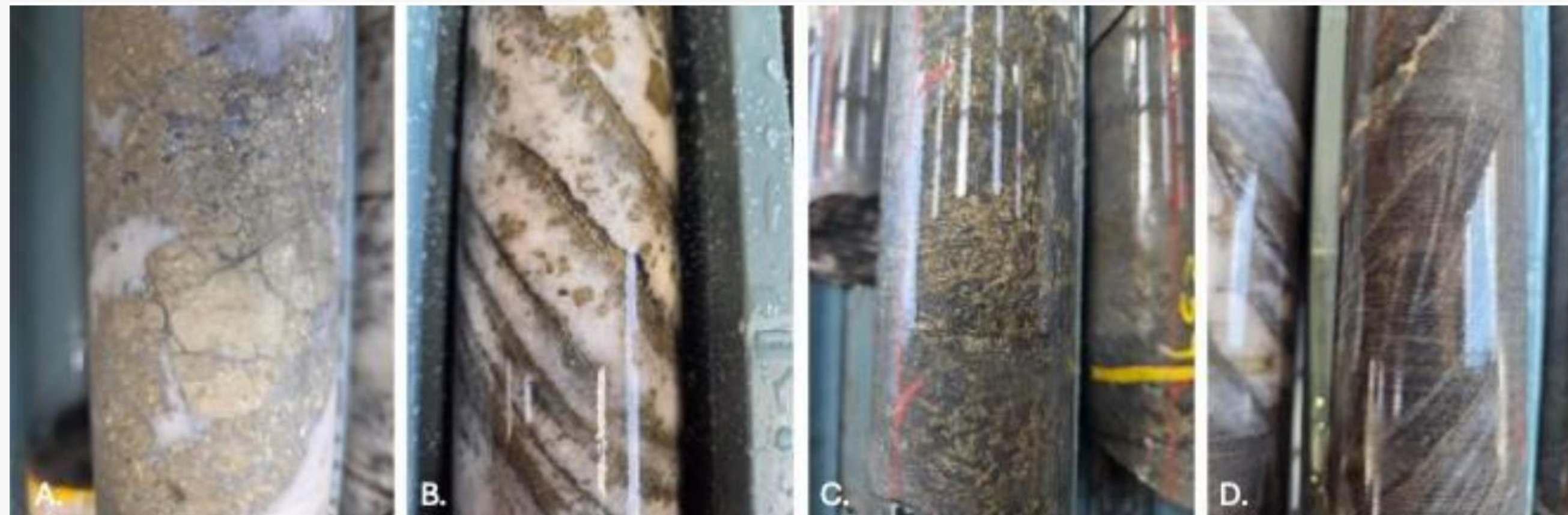
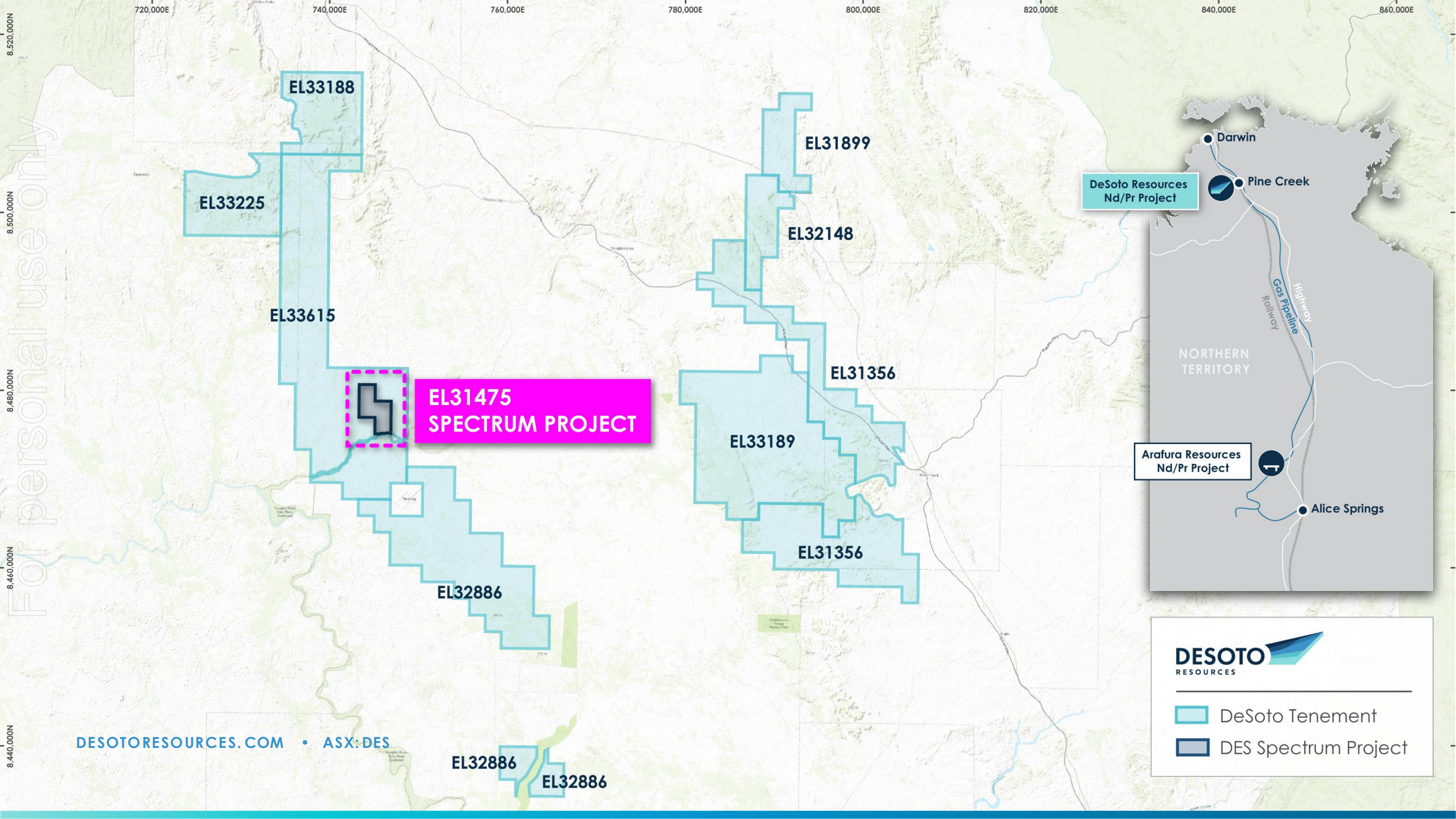


Fig.1 – Photographs of diamond drill core from sulphide zones in FMD016; A, B and C: pyrite dominant zones, D: pyrrhotite dominant zone

The Company identified drill target FMD016, a high intensity magnetic feature adjacent to a newly found buried granite with the potential for gold, copper, tin and uranium mineralisation - we eagerly await the results from this latest drilling.”

- **Managing Director Chris Swallow**

For personal use only



EL33188

EL33225

EL33615

EL31475
SPECTRUM PROJECT

EL31899

EL32148

EL31356

EL33189

EL31356

EL32886

EL32886

EL32886

DeSoto Resources
Nd/Pr Project

Arafura Resources
Nd/Pr Project

DESOTO
RESOURCES

DeSoto Tenement

DES Spectrum Project

DESOTORESOURCES.COM • ASX:DES

Spectrum Project

8KM-LONG COPPER-IN-SOIL ANOMALY OVERLAYING EM CONDUCTORS & HISTORIC REE DISCOVERY, LOCATED INSIDE FENTON PROJECT

Project Timeline

