

14 October 2025

Further Gold Exploration Planned for Aurora Gold Prospect, Arizona, USA

Golden Mile Resources Limited (“Golden Mile”; “the Company”; ASX: “**G88**”) is pleased to announce the next phase of exploration at the Aurora Gold Prospect, within the Company’s Pearl Copper Project (“Pearl”; “the Project”) located in Arizona, USA. A program of detailed structural geological mapping, systematic geochemical soil sampling, and additional rock-chip sampling is scheduled to commence in the coming weeks.

HIGHLIGHTS

- Follow-up programs to commence at Aurora to include structural mapping targeting high-grade quartz veins previously sampled, which returned assays of:
 - **Gold: 29.3 g/t, 11.2 g/t, 10.8 g/t, 8.93 g/t, and 8.43 g/t^{1&2}**
 - **Silver: 283 g/t, 36 g/t, 33.3 g/t, 22.3 g/t^{1&2}**
 - **Lead: 2.62 %, 1.59%, 1.04%^{1&2}**
- Structural mapping to provide definition of the controls on mineralisation, supported by a detailed soil geochemical program to delineate surface metal anomalies and provide greater resolution of gold mineralisation
- Mapping and soil geochemistry will refine gold targets for a maiden drilling program at Aurora
- All required permits are in place to carry out the planned work
- Appointment of Thomas Knoch as Technical Adviser to assist with new project generation, and to lead the detailed mapping program at Aurora

Golden Mile’s Managing Director Damon Dormer commented:

“Aurora has so far delivered outstanding results from early reconnaissance work in an area previously never sampled or drilled for gold. This new target for Golden Mile now requires a more systematic approach and mapping the structural controls in parallel with defining gold-soil anomalism is the next logical step. This will allow us to delineate the scale of mineralisation and define drill targets. Aurora is now emerging as a high priority prospect at the Pearl Project, further validating its multi-element potential.”

For personal use only

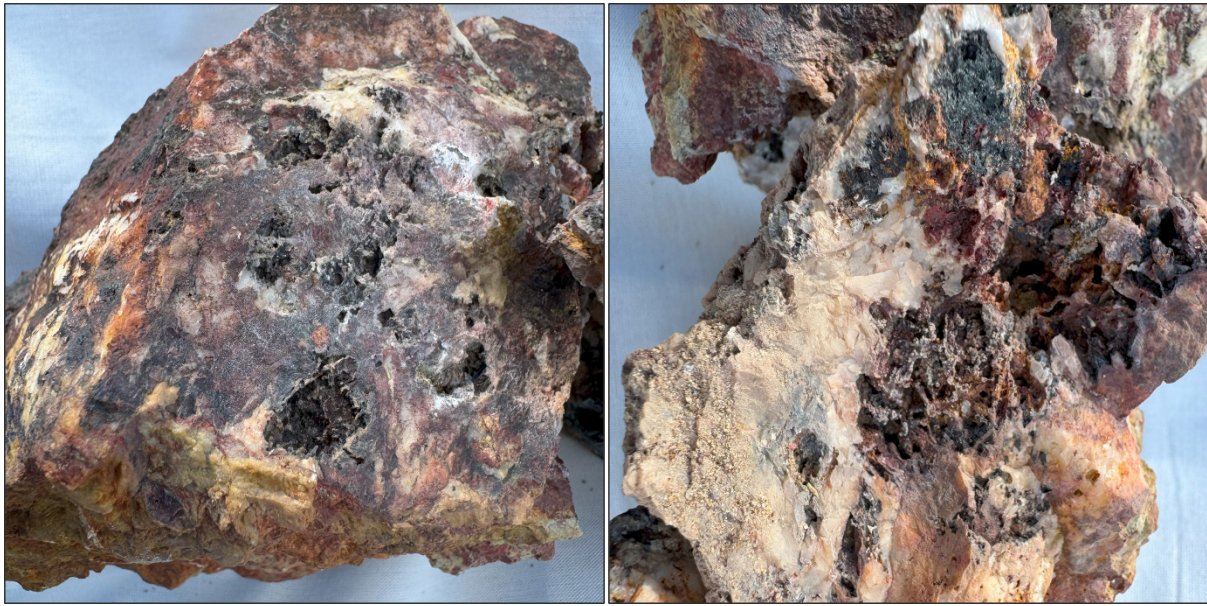


Figure 1: Aurora Prospect. Left: Sample PRL0126 **10.8 g/t Au, 33.3 g/t Ag, 2.62% Pb¹**. Right: 25RK010 **6.15 g/t Au, 17 g/t Ag, 1.04 % Pb.²**



Figure 2: Aurora Prospect. Left: Sample 25RK001 **29.3 g/t Au, 36 g/t Ag, 1.59% Pb.²** Right: Sample 25RK002 **11.2 g/t Au, 20 g/t Ag, 0.35% Pb.²**

Aurora Gold Prospect

The Aurora Gold Prospect is located approximately 800m east of the Odyssey Prospect within the Pearl Copper Project. Reconnaissance mapping and sampling around clusters of historic mine workings in 2024 and 2025 returned high-grade gold-silver-lead results, leading to the discovery of the new gold target. The high-grade gold assays were returned from samples displaying brecciated, ferruginous

For personal use only

quartz veins with boxwork textures of limonitic iron oxides formed after pyrite and other sulphide minerals^{1&2}.

Aurora is situated along the faulted boundary contact of the Oracle Granodiorite and Cloudburst Volcanics, where the NNW-trending Cloudburst Fault is crosscut by WNW structures that host significant gold and base metal mineralisation.

Previous rock-chip programs have consistently confirmed high-grade mineralisation from the shear-hosted veins, highlighting Aurora as a highly prospective gold target, previously untested by systematic exploration programs and drilling.

The gold workings at Aurora are situated on several WNW to NW oriented shear zones, which host the mineralised epithermal veins sets. These hydrothermal veins, along with the associated historic gold workings, present a highly promising exploration target that will be geologically and structurally mapped in greater detail. A systematic, grid soil sampling programme will also be carried out, centred on the workings, but also covering the strike extent of mapped mineralised structures.



Figure 3: Aurora Prospect. Various historical gold workings present at Aurora.

Proposed Field Program

Detailed Structural Mapping

Comprehensive field mapping to better define the geometry and continuity of the controls of the mineralised vein system. The focus will be on vein orientations, cross cutting relationships, and dilation zones that could represent high grade fluid pathways.

For personal use only

Geochemical Soil Sampling

A systematic grid-based program will be undertaken at Aurora to identify, map, and provide geochemical halos around mineralised structures. Samples will be analysed for gold and multi-element pathfinders to refine anomalies and provide sufficient resolution and delineation of anomalies, and vectoring to support a maiden drilling program.

Appointment of Technical Advisor – Thomas Knoch

The Company is pleased to appoint Thomas Knoch as Technical Advisor to Golden Mile Resources. Mr Knoch will provide technical geological expertise across the North American landscape for assessing growth opportunities as well as provide a 'boots on the ground' presence for the Company to help drive its Pearl Copper Project. Mr Knoch has previously provided consultancy services to Golden Mile since the acquisition of the Pearl Copper Project.

Mr Knoch is the founder of consultancy firm Geosolutions, which has been in operation in the western United States for over 24 years, having provided services for over 200 clients, within the mining, geotechnical, environmental, and agricultural industries.

He has degrees in Mining Engineering and Geological Engineering from the Mackay School of Mines, University of Nevada, Reno, and is a registered Professional Geologist, Certified Engineering Geologist and Certified Hydrogeologist. He is also a California State mine inspector having conducted at least 285 mine inspections in numerous State jurisdictions over the past 18 years.

Golden Mile's Managing Director Damon Dormer commented:

"Tom's expertise in geology, engineering, and permitting, significantly strengthens our ability to identify potential acquisitions, support projects, and navigate critical minerals funding options in North America."

References

- | | |
|---|-----------|
| ¹ SIGNIFICANT GOLD TARGET IDENTIFIED AT PEARL COPPER PROJECT | 23 JAN 25 |
| ² Aurora Prospect Delivers High-Grade Gold Assays | 07 JUL 25 |

For personal use only

This Announcement has been approved for release by the Board of Golden Mile Resources Limited.

For further information please contact:

Damon Dormer – Managing Director

Golden Mile Resources Ltd (ASX: G88)

ABN 35 614 538 402

T: (08) 6383 6508

E: info@goldenmileresources.com.au

W: goldenmileresources.com.au

S: LinkedIn: @Golden Mile Resources Ltd & Twitter: @GoldenMileRes

Note 1: Refer ASX announcement on the said date for full details of these results. Golden Mile is not aware of any new information or data that materially affects the information included in the said announcement.

About Golden Mile Resources Ltd

Golden Mile Resources Ltd (Golden Mile; ASX: G88) is a project development and mineral exploration company. The primary focus is on growing the Company with a multi asset and multi commodity strategy through advancement of core projects, acquisition of high-quality assets and tactical alliances with joint venture partners.

Competent Persons Statement - Exploration Results

The information included in the report is based on information compiled by Mr Martin Dormer, a consultant to Golden Mile Resources Ltd. Mr Dormer is a Member of the Australasian Institute of Mining and Metallurgy (Member ID 304615), and the Australian Institute of Geoscientists (Member ID 7370). Mr Dormer has sufficient relevant experience in the styles of mineralisation and deposit type under consideration, and to the activity which he is undertaking, to qualify as a Competent Person as defined in "The Australasian Code for Reporting of Exploration Results, Mineral Resources and Ore Reserves (JORC Code 2012 Edition)". Mr Dormer consents to the inclusion in this report of the matters based on his information in the form and context in which it appears.

Martin Dormer is a consultant to Golden Mile Resources Ltd and currently holds securities in the Company.

The Company confirms it is not aware of any new information or data that materially affects the exploration results set out in the original announcements referenced in this announcement and all material assumptions and technical parameters underpinning the estimates continue to apply and have not materially changed. The Company confirms that the form and context in which the Competent Person's findings are presented have not been materially modified from the original announcements.

Forward-Looking Statements

This document may include forward-looking statements. Forward-looking statements include, but are not limited to, statements concerning Golden Mile Resources Ltd (ASX: "G88") planned exploration program and other statements that are not historical facts. When used in this document, the words such as "could," "plan," "estimate," "expect," "intend," "may", "potential," "should," and similar expressions are forward-looking statements. Although Golden Mile Resources Ltd (ASX: "G88") believes that its expectations reflected in these forward-looking statements are reasonable, such statements involve risks and uncertainties, and no assurance can be given that actual results will be consistent with these forward-looking statements.

For personal use only

APPENDIX
Table 1: January 2025 Aurora Prospect rock chip assay results¹

Sample	Prospect	East	North	RL	Au	Ag	Cu	Pb
		(m)	(m)	(m)	(g/t)	(g/t)	(ppm)	(%)
24PRL0100	Aurora	525335	3622032	1080	1.15	4.97	43.3	0.13
24PRL0101	Aurora	525212	3622170	1099	0.68	3.49	9	0.01
24PRL0102	Aurora	525225	3622165	1099	0.4	7.89	28.3	0.05
24PRL0124	Aurora	525156	3621840	1102	0.66	3.76	684	0.098
24PRL0125	Aurora	525252	3621899	1108	8.93	22.3	1115	0.17
24PRL0126	Aurora	525256	3621905	1105	10.8	33.3	311	2.62

Coordinates UTM Zone 12 (NAD83)

Table 2: July 2025 Aurora Prospect rock chip assay results²

Sample	Prospect	East	North	RL	Au	Ag	Cu	Pb
		(m)	(m)	(m)	(g/t)	(g/t)	(ppm)	(%)
25RK001	Aurora	525241	3621979	1090	29.3	36	100	1.59
25RK002	Aurora	525261	3621968	1092	11.2	20	139	0.349
25RK003	Aurora	525274	3621955	1092	1.52	6	98.9	0.100
25RK004	Aurora	525320	3621959	1094	8.43	14	65.1	0.324
25RK005	Aurora	525279	3621882	1094	0.68	3	101	0.029
25RK006	Aurora	525239	3621921	1102	6.09	11	59.4	0.247
25RK007	Aurora	525266	3621989	1104	0.01	<2	14.4	0.008
25RK008	Aurora	525271	3621895	1115	0.16	<2	118	0.004
25RK009	Aurora	525229	3621902	1116	0.26	<2	59.3	0.005
25RK010	Aurora	525274	3621888	1111	6.15	17	138	1.04
25RK011	Aurora	525197	3621867	1112	1.7	7	181	0.2456

Coordinates UTM Zone 12 (NAD83)

For personal use only

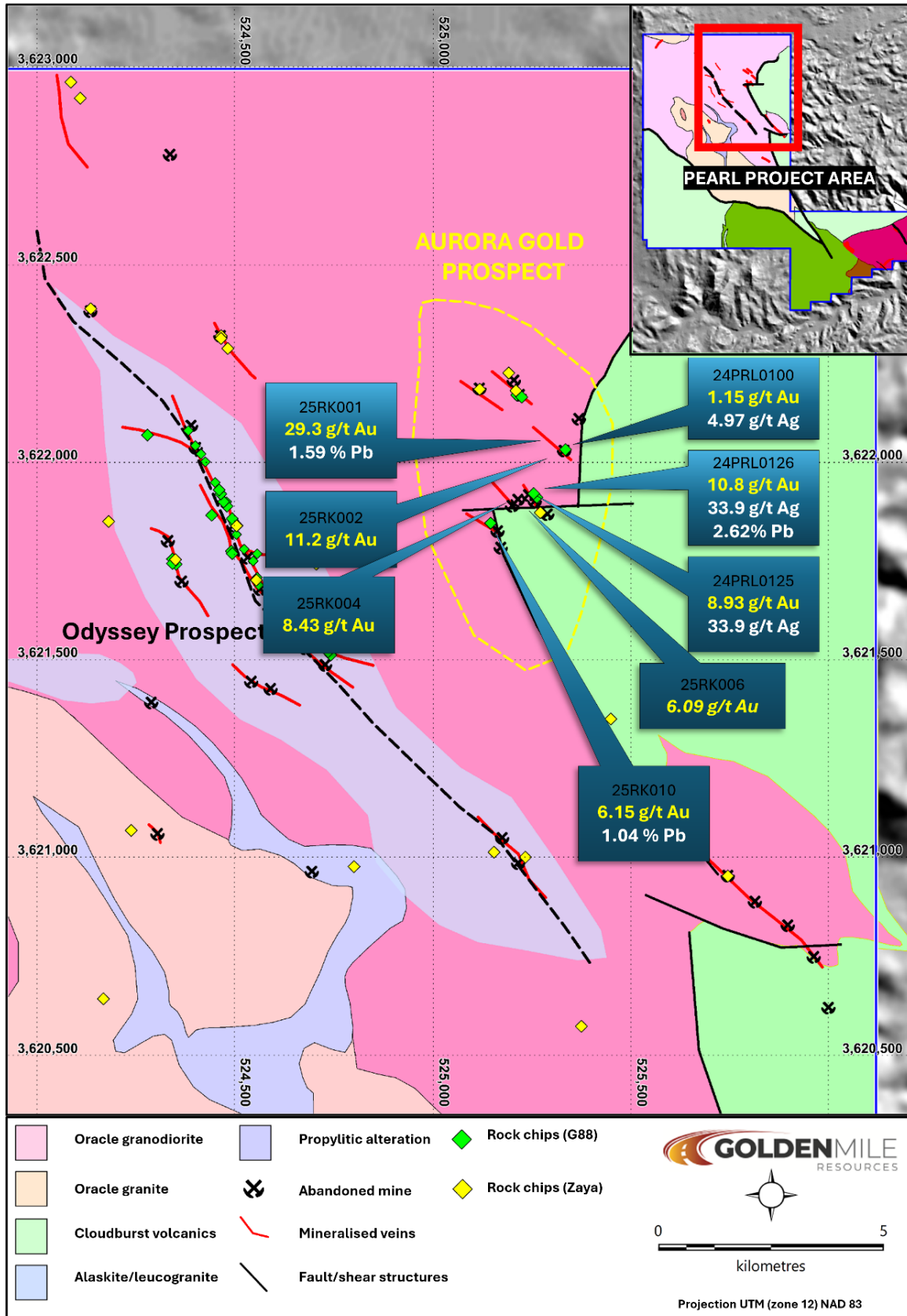


Figure 4: Aurora Gold Prospect high-grade rock chip location.

For personal use only



Figure 5: Pearl Copper Project location.

For personal use only