

15 October 2025

ASX Announcement

Exploration Update - North Achilles (NSW): soil sampling completed

- **Phase 1 Soil Sampling has been completed at the North Achilles project with samples to be analysed via Ultrafine™ (UFF) approach**
- **Soil sampling follows recent execution of land access agreement with landholder and early site reconnaissance**
- **Program designed to target the convergence of the regional Uabba and Kilparney Faults, interpreted as a shallowly covered extension of the Achilles Shear Zone**
- **The recent record gold and silver prices along with momentum behind copper and the exploration success of neighbouring explorers provide a compelling setting for potential discovery**

Regener8 Managing Director, Stephen Foley, comments:

"Completing Phase 1 UFF soils over the Uabba-Kilparney Fault convergence and the Achilles Shear Zone along strike from known mineralisation is the first step of the field campaign at our North Achilles project. This technique is designed to detect geochemical dispersion beneath shallow cover and provides a strong, early-stage dataset to integrate with our geophysics. With AGC's Achilles discovery validating a similar combined surface geochemistry and geophysics workflow just south of our boundary, Regener8 is well-positioned to rapidly advance towards defining high-priority drill targets."

Soil Sampling Completed

The North Achilles project (southern Cobar Basin, NSW - Figure 1) is located immediately adjacent to tenements held by Australian Gold and Copper Ltd (ASX:**AGC**) and approximately 2.2km north of the recent Achilles discovery. AGC have achieved outstanding drill results at Achilles including 5 metres @ 16.9g/t Au, 1,667g/t Ag, 0.4% Cu & 15% Pb + Zn (A3RC030 - AGC ASX Ann. 04.06.2024).

Regener8 Resources HQ

Unit 1, 4 Burgay Court
Osborne Park WA 6017

P +61 475 296 121
E hello@regener8resources.com.au



For personal use only
Highlights

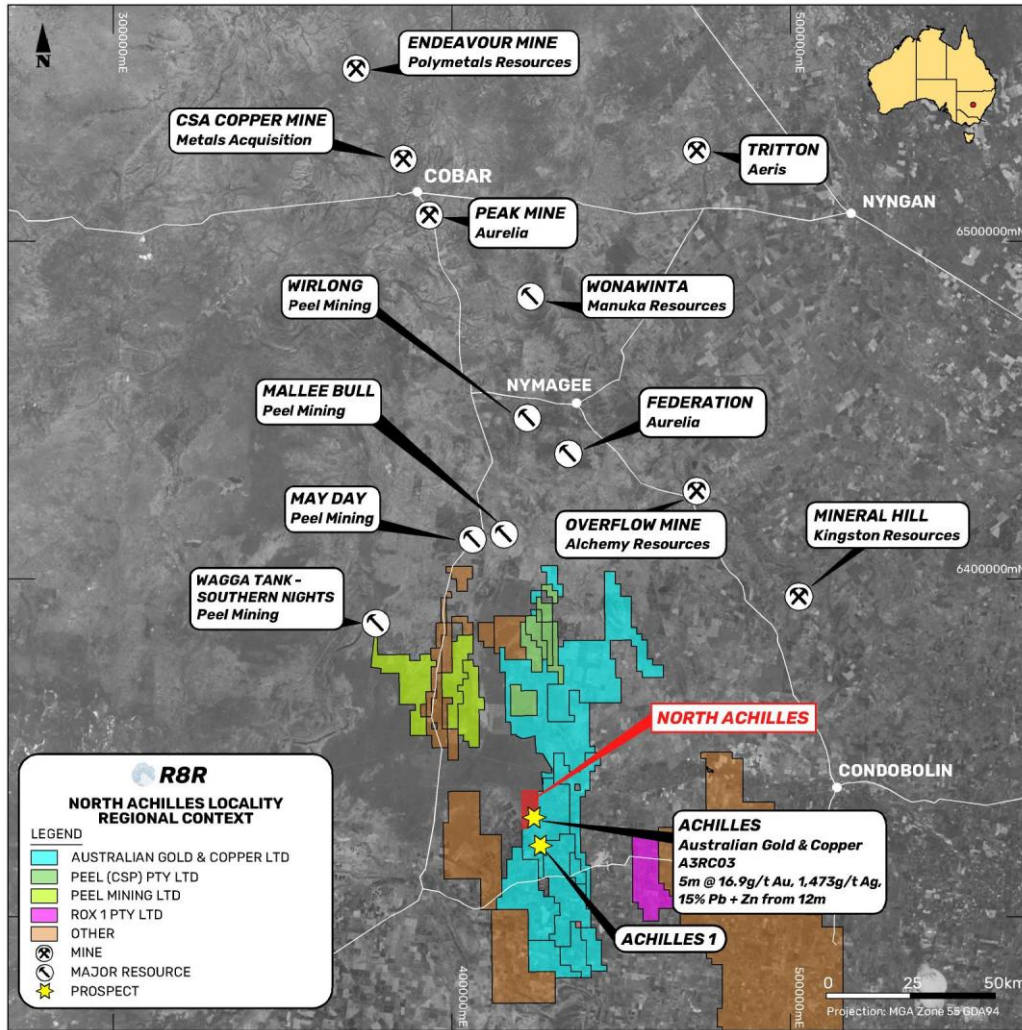


Figure 1: North Achilles project area within the southern Cobar Basin showing neighboring deposits and mines

Regener8 has recently finalised a land access agreement with the private landholder on which EL9718 is situated, which allows exploration to commence. The Company would like to thank the landholders for their efforts during this period and look forward to continuing to build positive relationships with the local stakeholders.

The North Achilles project is located on the western margin of the Rast Trough, with the geological structural architecture locally dominated by the convergence of the Uabba Fault and the Kilparney Fault (Figure 2). This junction of two major regional faults is interpreted as a zone of significant structural complexity that may serve as a conduit for mineralising fluids. Magnetic inversion and structural interpretation suggest that the Achilles Shear Zone, which hosts AGC's known discoveries to the south, projects northward into the tenement under shallow cover. The Phase 1 UFF program was designed to test this area of fault intersection with a focus on detecting a geochemical signature of the basement geology through the shallow cover.

Regener8 Resources HQ

Unit 1, 4 Burgay Court
Osborne Park WA 6017

P +61 475 296 121
E hello@regener8resources.com.au



For personal use only

In terrains with thin to modest cover or transported overburden, conventional coarse-fraction (silt / sand / gravel) soil sampling often fails to detect dispersion halos from underlying mineralisation due to dilution and masking by barren cover material. UFF addresses this, and aims to amplify subtle geochemical anomalism by isolating the < 2 µm clay-colloidal fraction of the soils sample, which preferentially carries trace metals that may be derived from underlying mineralisation during regolith development and evolution.

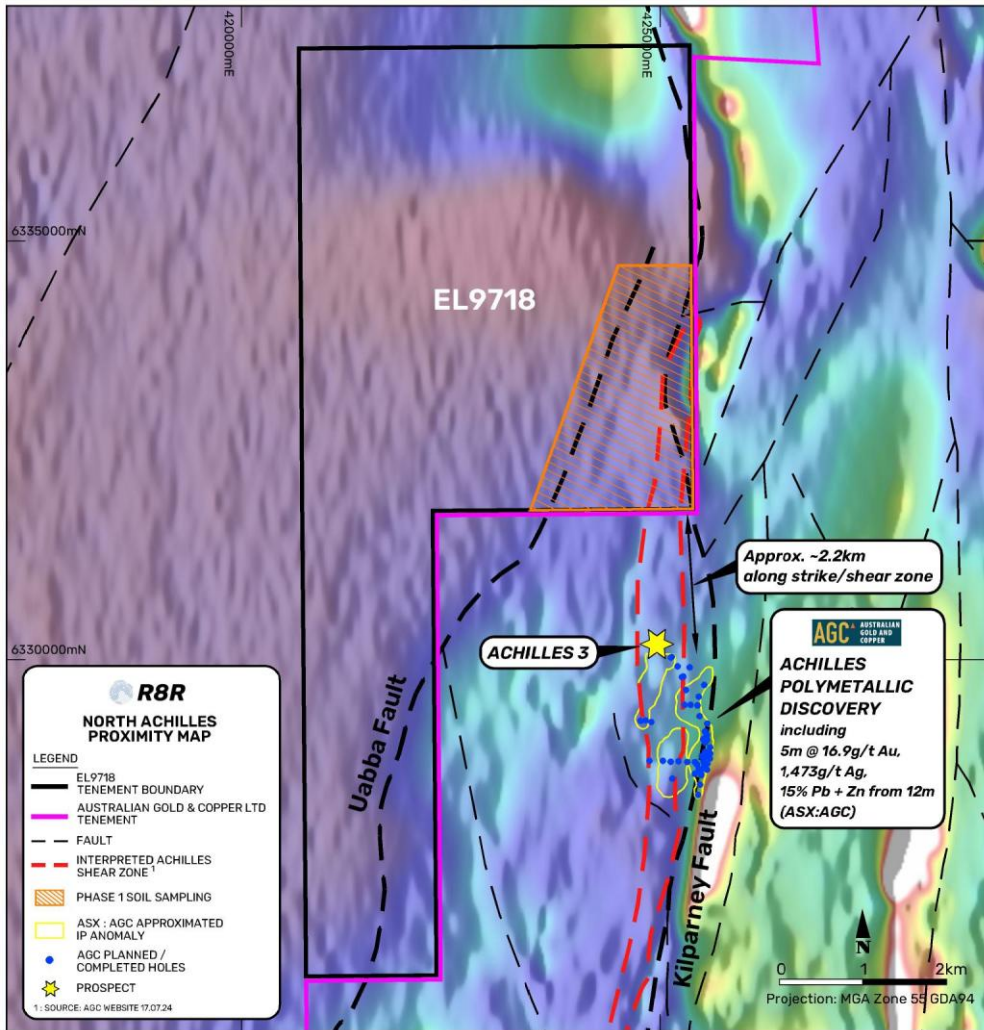


Figure 2: North Achilles (EL9718) reprocessed magnetics with major structures and Phase 1 UFF Soil Sampling area indicated.

In a shallowly covered and structurally complex domain such as the Uabba–Kilparney / Achilles corridor, UFF provides a first-pass geochemical tool to rapidly discern any prospective zones to target for further exploration by geophysical or drilling techniques. This dual approach of surface



For personal use only

geochemistry and targeted geophysical surveys (including IP and EM methods) has proven successful elsewhere within the Cobar region.



Figure 3: Regener8 Resources' Ross Chandler undertaking soil sampling for UFF analysis at North Achilles

The current robust pricing backdrop for metals such as Au, Ag and Cu is driving renewed enthusiasm in the exploration sector. In this macro environment, exploration projects like North Achilles which are located immediately proximal to known mineralisation yet have received no modern exploration with modern techniques such as UFF and geophysical targeting are well positioned to leverage the current commodity cycle.

Relevant ASX Announcements:

- 25.02.2025 "Exploration Update: North Achilles (NSW)"

This ASX Announcement has been authorised for release by the Board.

For further information, please contact:

Stephen Foley
Managing Director
Tel: +61 475 296 121

Regener8 Resources HQ

Unit 1, 4 Burgay Court
Osborne Park WA 6017

P +61 475 296 121
E hello@regener8resources.com.au



For personal use only

Background Regener8 Resources Projects

Regener8's diverse and future facing exploration project portfolio consists of three key projects across Australia:

1. **North Achilles Project, South Cobar, NSW:** Polymetallic (Au, Ag, Pb, Zn)
Located immediately beside and along trend of Australian Gold and Copper's (ASX:AGC) Achilles discovery with outstanding results including **5 metres @ 16.9 g/t Au, 1,667 g/t Ag, 0.4% Cu & 15% Pb + Zn** (A3RC030 - AGC ASX Ann. 04.06.2024)
2. **East Ponton Project, WA:** Critical Minerals (Ni, Co) and Au
Located approximately 220km east of Kalgoorlie and 70 km southeast of Deep Yellow's (ASX:DYL) polymetallic Mulga Rocks project. The East Ponton Project is located on the same paleochannel system as Mulga Rocks, with recent drilling confirming a prospective sedimentary sequence for paleochannel-hosted Ni and Co. East Ponton is also prospective for paleochannel gold with broad low grade mineralisation up to 15m @ 0.25 g/t Au intercepted in recent drilling.
3. **Kookynie Gold Project, WA:** Au
Sitting within the Kookynie Gold district north of Kalgoorlie, the project hosts substantial historical workings and exploration with intersections including **2m @ 70.5 g/t Au** (RC38), **2m @ 15.4 g/t Au** (RC315) and **2m @ 11.32 g/t Au** (RC391). Regener8's 2023 program found encouraging results which included **5m @ 3.18 g/t Au** (NGRC017) and **2m @ 7.77g/t Au** (including **1m @ 14.8 g/t Au** in NGRC037).



Figure A:
Regener8 Exploration Portfolio
Project Locations

The Company confirms that all material assumptions and technical parameters underpinning the exploration results in this report continue to apply and have not materially changed. The Company is not aware of any new information or data that materially affects the information included in this release.

Regener8 Resources HQ

Unit 1, 4 Burgay Court
Osborne Park WA 6017

P +61 475 296 121
E hello@regener8resources.com.au



For personal use only