

15 October 2025

Broad Copper-Gold Anomalism and High-Tenor Sulphides Identified in Peru

HIGHLIGHTS

- Assays for the first two drill holes at Ilo Este (IE-001 and IE-002) identified broad zones of elevated copper, gold and molybdenum anomalism across multiple intervals, confirming the presence of a large mineralised system.
- Disseminated, variably anomalous copper-gold-molybdenum mineralisation present over the entire length of both drillholes.
- High tenor copper sulphides, bornite and chalcopyrite were identified in hole IE-002 indicating possible proximity and vectors to a higher-grade porphyry source. Elevated gold values are associated with zones of increased pyrrhotite, together with later albitization and chloritization of the potassic-altered diorite and microdiorite.

- Summary of key intercepts:

IE-001:

- 18m @ 0.09% Cu, 0.15 g/t Au, 7 ppm Mo from 50 metres
- 35m @ 0.09% Cu, 0.11 g/t Au, 11 ppm Mo from 82 metres
- 57m @ 0.10% Cu, 0.10 g/t Au, 10 ppm Mo from 169 metres
 - Including: 13m @ 0.07% Cu, 0.15 g/t Au, 5 ppm Mo from 169 metres
- 21m @ 0.10% Cu, 0.10 g/t Au, 27 ppm Mo from 237 metres
- 120m @ 0.13% Cu, 0.07 g/t Au, 17 ppm Mo from 268 metres
 - Including: 8m @ 0.16% Cu, 0.20 g/t Au, 3 ppm Mo from 362 metres

IE-002:

- 18m @ 0.11% Cu, 0.10 g/t Au, 22 ppm Mo from 102 metres
- 16m @ 0.06% Cu, 0.12 g/t Au, 10 ppm Mo from 566 metres
- 39m @ 0.04% Cu, 0.20 g/t Au, 3 ppm Mo from 712 metres
 - Including: 10m @ 0.08% Cu, 0.31 g/t Au, 4 ppm Mo from 716 metres
 - Including: 9m @ 0.03% Cu, 0.23 g/t Au, 2 ppm Mo from 738 metres
- Assays received for Ilo Este were drilled near the northern magnetic anomaly (Figure 2) and with grades consistent with historical drilling results¹. The drill rig is now drilling the untested southern magnetic anomaly area targeting co-incident geophysical and geochemical anomalies.
- Assays for the first drillhole at Chancho al Palo (CAP-001) identified zones of elevated gold mineralisation, including CAP-001 with 19m @ 0.31 g/t Au from 57 metres.

Solis Minerals Ltd (“Solis” or “the Company”) is pleased to advise that initial assay results have been received for the first diamond drill holes at the Ilo Este (IE-001 and IE-002) and Chancho al Palo

¹ Refer to ASX:SLM announcement from 11 August 2025: *Drilling Commenced at Ilo Este Copper Gold Project, Peru*

Solis Minerals

E: info@solisminerals.com.au
T: 08 6117 4798 (Australia office)
solisminerals.com

Media Contact:

Fiona Marshall
E: fiona@whitenoisecomms.com
T: +61 400 512 109

ASX:SLM

OTC:WMRSF

FRA:08W

For personal use only

(CAP-001) projects in southern Peru. Further assay results are expected in the next 20–25 business days.

Chief Executive Officer, Mitch Thomas, commented:

“We are encouraged by initial results from Ilo Este, which confirm the presence of broad zones of copper, gold, and molybdenum mineralisation across multiple intervals in our first two drill holes. The identification of bornite in the second drill hole is particularly exciting, as it suggests we are vectoring in on the higher-grade core of the porphyry system. Drilling of the southern magnetic anomaly is now the focus for Ilo Este which presents as a very attractive untested target for copper-gold exploration.”

Ilo Este - Northern Magnetic Anomaly

Assays received for two drillholes completed

Assays from the first two drill holes at Ilo Este (IE-001 and IE-002) have confirmed broad zones of elevated copper, gold and molybdenum anomalism across multiple intervals, demonstrating the presence of a large mineralised system. The drill holes were completed to 482 and 758 metres respectively. Summary as follows:

IE-001:

- 18m @ 0.09% Cu, 0.15 g/t Au, 7 ppm Mo from 50 metres
- 35m @ 0.09% Cu, 0.11 g/t Au, 11 ppm Mo from 82 metres
- 57m @ 0.10% Cu, 0.10 g/t Au, 10 ppm Mo from 169 metres
 - Including: 13m @ 0.07% Cu, 0.15 g/t Au, 5 ppm Mo from 169 metres
- 21m @ 0.10% Cu, 0.10 g/t Au, 27 ppm Mo from 237 metres
- 120m @ 0.13% Cu, 0.07 g/t Au, 17 ppm Mo from 268 metres
 - Including: 8m @ 0.16% Cu, 0.20 g/t Au, 3 ppm Mo from 362 metres

IE-002:

- 18m @ 0.11% Cu, 0.10 g/t Au, 22 ppm Mo from 102 metres
- 16m @ 0.11% Cu, 0.07 g/t Au, 6 ppm Mo from 140 metres
- 43m @ 0.10% Cu, 0.08 g/t Au, 16 ppm Mo from 176 metres
- 32m @ 0.11% Cu, 0.06 g/t Au, 46 ppm Mo from 240 metres
- 29m @ 0.12% Cu, 0.07 g/t Au, 16 ppm Mo from 446 metres
- 16m @ 0.06% Cu, 0.12 g/t Au, 10 ppm Mo from 566 metres
- 39m @ 0.04% Cu, 0.20 g/t Au, 3 ppm Mo from 712 metres
 - Including: 10m @ 0.08% Cu, 0.31 g/t Au, 4 ppm Mo from 716 metres
 - Including: 9m @ 0.03% Cu, 0.23 g/t Au, 2 ppm Mo from 738 metres

The identification of high-tenor copper sulphides (bornite and chalcopyrite) in IE-002 is particularly significant, as these minerals are commonly associated with the core zones of porphyry copper systems and may indicate proximity to a higher-grade source (Figure 1). Elevated gold values, found in zones of increased pyrrhotite and associated with later-stage albitization and chloritization of potassic-altered diorite and microdiorite, further support this vectoring model.

These drill holes, completed near the northern magnetic anomaly and consistent with historical grades, are providing critical geological vectors that guide ongoing exploration toward the suspected high-grade copper-gold core.

For personal use only

A follow-up drill hole is planned to test a higher-grade gold zone identified both at surface and at depth in historical drillhole IE-JDD-003 (Figure 2), which previously encountered significant gold and copper mineralisation over an 84-metre interval at 0.24% copper from surface². Together, these results and future drilling will help delineate the core of the system and refine targeting for additional high-grade discoveries.

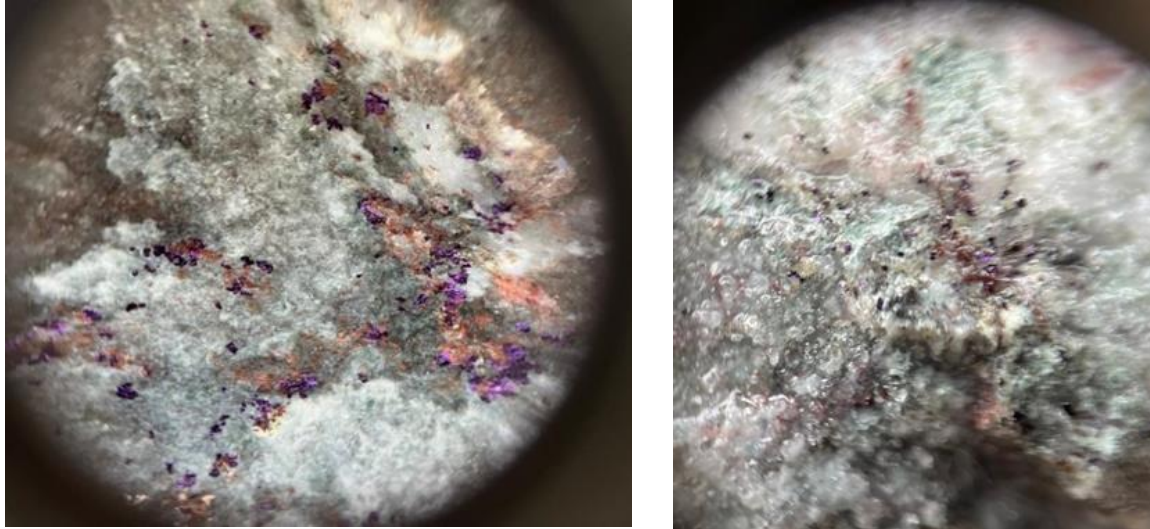


Figure 1: IE-002-2025 drill core demonstrating visual bornite. Visual estimates of mineral abundance should never be considered a proxy or substitute for laboratory analyses where concentrations or grades are the factor of principal economic interest. Visual mineralisation observed at isolated points may not be representative of the overall grades of the drillhole intervals of interest. Visual estimates also potentially provide no information regarding impurities or deleterious physical properties relevant to valuations.

Ilo Este - Southern Magnetic Anomaly

Currently drilling

Drilling has now progressed to the southern magnetic anomaly (Figure 2), targeting coincident porphyry indicators including high Induced Polarisation (“IP”) chargeability, strong geochemistry (copper and gold) and mapped alteration³. IE-003 has been completed to 433.20 metres with IE-004 at 328.00 metres and is expected to be drilled to a depth of approximately 500 metres. Assays are expected in November 2025.

The 2023 IP geophysical study identified a large, high-magnitude chargeability anomaly (>20mV/V) in direct contact with a previously mapped magnetic anomaly. This spatial coincidence of IP and magnetic anomalies is significant, as it often points to the presence of sulphide and iron oxide mineralisation associated with porphyry copper systems. The anomaly itself is substantial, measuring approximately 1,250 metres in length and 200 – 400 metres in width, and is detectable from about 100 metres to 500 metres below the surface suggest the potential for a large mineralised system.

Surface mapping and geochemical sampling have been completed. The target area is characterised by potassic-altered porphyritic microdiorites with visible copper oxides (malachite), indicating oxidized hypogene copper mineralisation at or near the surface (Figure 2). Historical drilling in the broader project area returned anomalous values for copper and gold (refer to drillhole IE-DDH-005-15 in Figure 2 with 291 metres @ 0.21 g/t Au from 102 metres), although previous holes missed the highest priority target zones now defined by the IP and reprocessed magnetic data and subject to the current drilling program.

² Refer to ASX:LRS, 22 December 2014 (<https://api.investi.com.au/api/announcements/lrs/e7449033-0f1.pdf>)

³ Refer to ASX:SLM announcement from 13 December 2023: *Anomaly confirms drill target zone during IP study at Ilo Este, Peru*

For personal use only

The southern magnetic anomaly is interpreted to be less eroded than the northern part of the property, suggesting the possibility of better preservation of porphyry-style mineralisation. The host rocks – porphyritic quartz microdiorites intruding altered Jurassic volcanics – are considered highly favourable for copper mineralisation. Structural controls, such as proximity to the regional Chololo fault, may also enhance the potential for mineralisation by providing pathways for hydrothermal fluids.

The combination of these factors – large, coincident geophysical anomalies, strong surface geochemical signatures, favourable geology, and the fact that the target is undrilled – makes this a highly attractive drilling target.

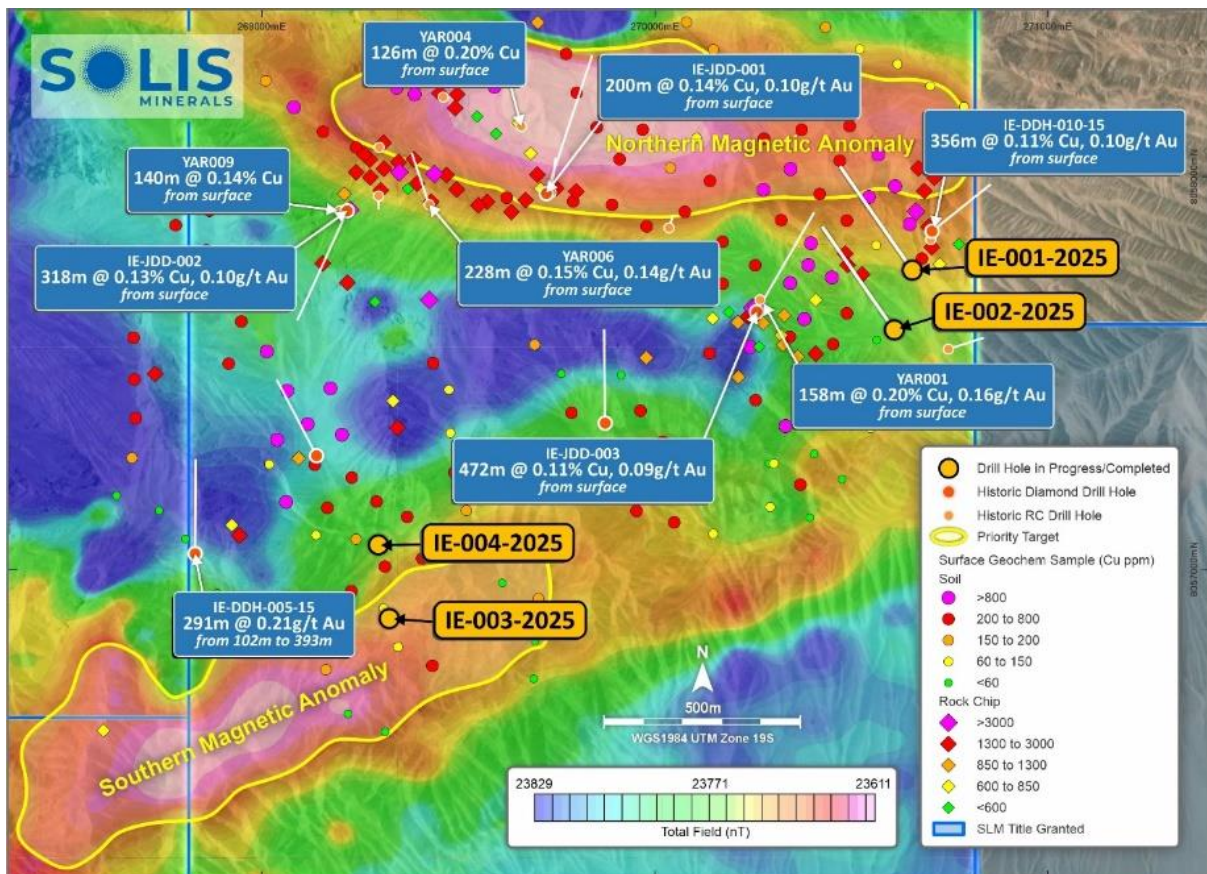


Figure 2: Ilo Este drillhole locations across northern and southern magnetic anomalies. Refer to ASX:SLM announcements of 11 August 2025 and 13 December 2023 for more information on historical drillhole and geochemistry results. Key intercepts for drillholes IE-001 and IE-002 included in this announcement.

Chancho al Palo

Assay results for drill hole CAP-001 did not identify contiguous intervals greater than six metres carrying copper grades above 0.1% Cu (locations reported on Figure 3). A significant gold intercept from CAP-001 summarised as follows:

- **CAP-001:** 19m @ 0.31 g/t Au from 57 metres
 - **Including:** 4m @ **1.1 g/t Au** from 57 metres
 - **Including:** 14m @ **0.45 g/t Au** from 78 metres

The Company notes that this is an early-stage result from the first drillhole and that all geological and geochemical data will be used to refine future targeting. Assays for CAP-002 and CAP-003 are expected within the next 20–25 business days.

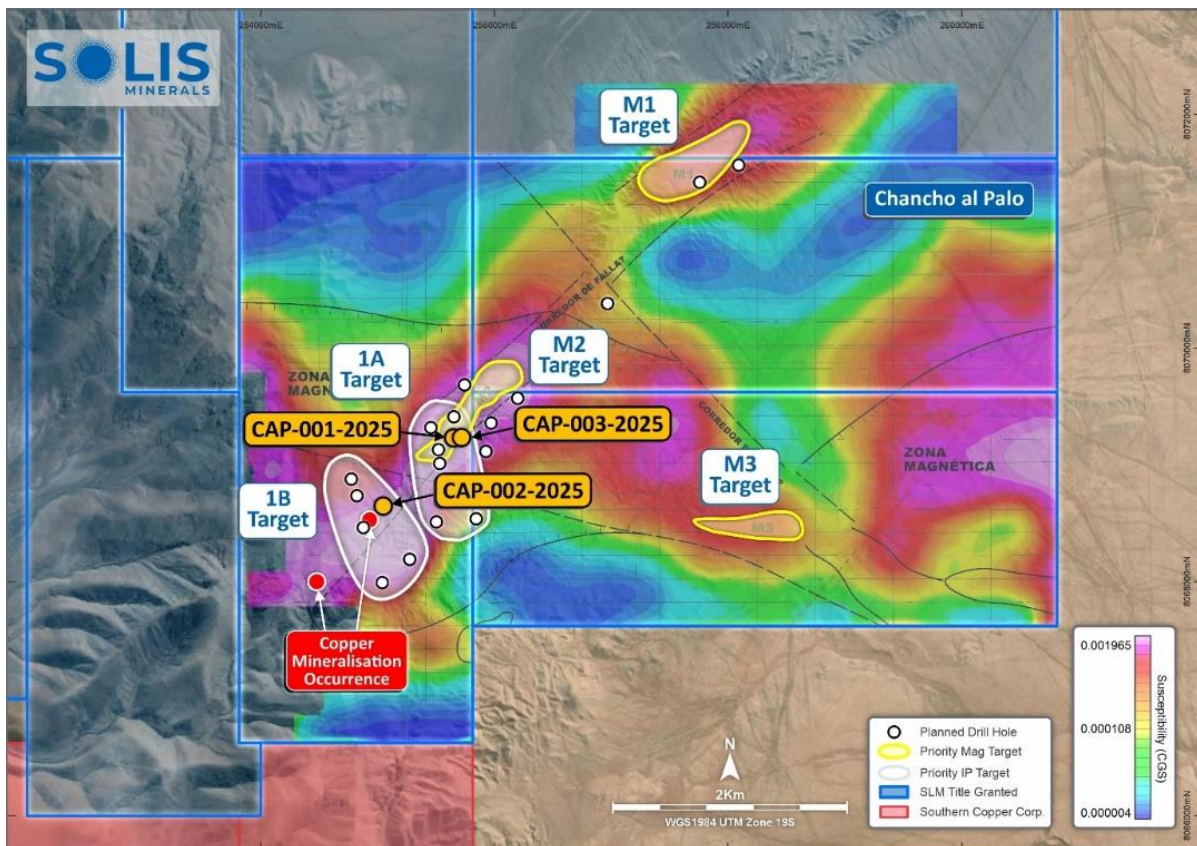


Figure 3: Chancho al Palo drillhole locations. Refer to ASX:SLM announcement of 29 April 2024 for more information on the historical IP survey at Chancho al Palo.

Next Steps

1. Additional assay results from both projects are expected within 20–25 business days.
2. Diamond drilling at Ilo Este will continue to test priority targets. Total planned drilling campaign is approximately 5,000 metres.
3. The Company will provide further updates as results are received and interpreted.

ENDS

This announcement is authorised for release by the Board.

Contact

Mitch Thomas
 Chief Executive Officer
 Solis Minerals Limited
 mthomas@solisminerals.com.au
 +61 458 890 355

Media & Broker Enquiries:

Fiona Marshall
 White Noise Communications
 fiona@whitenoisecomms.com
 +61 400 512 109

About Solis Minerals Limited

Solis Minerals is an emerging exploration company, focused on unlocking the potential of its South American copper portfolio. The Company is building a significant copper portfolio around its core

For personal use only

tenements of Ilo Este and Ilo Norte and elsewhere in the Coastal Belt of Peru.

The Company is led by a highly-credentialed and proven team with excellent experience across the mining lifecycle in South America. Solis is actively considering a range of copper opportunities. South America is a key player in the global export market for copper and Solis, under its leadership team, is strategically positioned to capitalise on growth opportunities within this mineral-rich region.

Forward-Looking Statements

This news release contains certain forward-looking statements that relate to future events or performance and reflect management's current expectations and assumptions. Such forward-looking statements reflect management's current beliefs and are based on assumptions made and information currently available to the Company. Readers are cautioned that these forward-looking statements are neither promises nor guarantees and are subject to risks and uncertainties that may cause future results to differ materially from those expected, including, but not limited to, market conditions, availability of financing, actual results of the Company's exploration and other activities, environmental risks, future metal prices, operating risks, accidents, labour issues, delays in obtaining governmental approvals and permits, and other risks in the mining industry. All the forward-looking statements made in this news release are qualified by these cautionary statements and those in our continuous disclosure filings available on SEDAR+ at www.sedarplus.ca. These forward-looking statements are made as of the date hereof, and the Company does not assume any obligation to update or revise them to reflect new events or circumstances save as required by applicable law.

Qualified Person Statement

The technical information in this news release was reviewed by Dr. Paul Pearson, a Fellow of the Australian Institute of Mining and Metallurgy (AusIMM), a qualified person as defined by National Instrument 43-101 (NI 43-101). Paul Pearson is the Head of Exploration for the Company.

Competent Person Statement

The information in this ASX release concerning Geological Information and Exploration Results is based on and fairly represents information compiled by Mr Paul Pearson, a Competent Person who is a Fellow of the Australasian Institute of Mining and Metallurgy. Mr Pearson is Head of Exploration of Solis Minerals Ltd. and has sufficient experience which is relevant to the style of mineralisation and types of deposit under consideration and to the exploration activities undertaken to qualify as a Competent Person as defined in the 2012 Edition of the "Australian Code for Reporting of Mineral Resources and Ore Reserves". Mr Pearson consents to the inclusion in this report of the matters based on information in the form and context in which it appears. Mr Pearson has provided his prior written consent regarding the form and context in which the Geological Information and Exploration Results and supporting information are presented in this Announcement.

APPENDIX 1

Ilo Este IE-001 and IE002 drill collar details and intercept information

Hole_ID	Platform	East	North	Elev m	Depth m	Azimet degrees	Dip degrees	Start Date	End Date
IE-001-2025	P-15	270655.54	8057762.58	922	482.1	325	-50	6/08/2025	17/08/2025
IE-002-2025	P-20	270620.5	8057601.71	952	757.7	325	-60	20/08/2025	21/09/2025

Chancho al Palo CAP-001, CAP-002 and CAP-003 drill collar details and intercept information

Hole_ID	Platform	East	North	Elev m	Depth m	Azimet degrees	Dip degrees	Start Date	End Date
CAP-001-2025	P-01	255693	8069240	1292	712.90	250.00	-75	6/6/2025	6/20/2025
CAP-002-2025	P-05	255504	8069149	1301	697.50	227.37	-75	6/23/2025	7/8/2025
CAP-003-2025	P-01	255696	8069243	1292	653.10	100.00	-60	7/10/2025	7/29/2025

personal use only

APPENDIX 2

JORC Code, 2012 Edition – Table 1 Section 1 – Sampling Techniques and Data (Criteria in this section apply to all succeeding sections)

Criteria	JORC Code explanation	Comment
Sampling techniques	<ul style="list-style-type: none"> • <i>Nature and quality of sampling (eg cut channels, random chips, or specific specialised industry standard measurement tools appropriate to the minerals under investigation, such as down hole gamma sondes, or handheld XRF instruments, etc). These examples should not be taken as limiting the broad meaning of sampling.</i> • <i>Include reference to measures taken to ensure sample representivity and the appropriate calibration of any measurement tools or systems used.</i> • <i>Aspects of the determination of mineralisation that are Material to the Public Report.</i> • <i>In cases where ‘industry standard’ work has been done this would be relatively simple (eg ‘reverse circulation drilling was used to obtain 1 m samples from which 3 kg was pulverised to produce a 30 g charge for fire assay’). In other cases more explanation may be required, such as where there is coarse gold that has inherent sampling problems. Unusual commodities or mineralisation types (eg submarine nodules) may warrant disclosure of detailed information.</i> 	<ul style="list-style-type: none"> • <i>Wire-line diamond drilling was used to obtain core samples for sampling and assaying purposes.</i> • <i>Zones with visible economic minerals or otherwise considered to be of importance were sampled at 1m core intervals.</i> • <i>Zones considered to be background to mineralisation were sampled at 2m core intervals.</i> • <i>Cores were sawn and half cores sent to laboratory for crushing and splitting. A 250g pulp was prepared for analysis. Coarse rejects will be returned to the company for possible further compositing and analysis etc.</i> • <i>Appropriate standard reference materials and blanks were inserted into the sample runs, as well as duplicates consisting of quarter cores etc.</i>
Drilling techniques	<ul style="list-style-type: none"> • <i>Drill type (eg core, reverse circulation, open-hole hammer, rotary air blast, auger, Bangka, sonic, etc) and details (eg core diameter, triple or standard tube, depth of diamond tails, face-sampling bit or other type, whether core is oriented and if so, by what method, etc).</i> 	<ul style="list-style-type: none"> • <i>Wire-line diamond drilling. For drillhole IE-001-2025 HQ diameter core from surface to 482.10m (end of hole). For drillhole IE-002-2025 HQ diameter core from surface to 508.5 m. NQ diameter core from 508.50 to 757.70m (end of hole). For drillhole CAP-001-2025 HQ diameter core from surface to 517.60 m. NQ diameter core from 517.60 to 712.90m (end of hole). For drillhole CAP-002-2025 HQ diameter core from surface to 508.60 m. NQ diameter core from 508.60 to 697.50m (end of hole). For drillhole CAP-003-2025 HQ diameter core from surface to 508.60 m. NQ diameter core from 507.40 to</i>

For personal use only

Criteria	JORC Code explanation	Comment
		<p>653.10m (end of hole).</p> <ul style="list-style-type: none"> Non-orientated core (orientation not considered necessary for type of mineralisation expected).
Drill sample recovery	<ul style="list-style-type: none"> Method of recording and assessing core and chip sample recoveries and results assessed. Measures taken to maximise sample recovery and ensure representative nature of the samples. Whether a relationship exists between sample recovery and grade and whether sample bias may have occurred due to preferential loss/gain of fine/coarse material. 	<ul style="list-style-type: none"> Core runs every 3.0 metres removed from the tube Coring advance and depths were recorded and verified against physical core. Core recovery >95%. Recovery maximised by appropriate drill methods. (frequency of core pulls, additives etc.). Relatively fresh nature of rocks has not resulted in any sample bias due to grain-size issues.
Logging	<ul style="list-style-type: none"> Whether core and chip samples have been geologically and geotechnically logged to a level of detail to support appropriate Mineral Resource estimation, mining studies and metallurgical studies. Whether logging is qualitative or quantitative in nature. Core (or costean, channel, etc) photography. The total length and percentage of the relevant intersections logged. 	<ul style="list-style-type: none"> Core samples were subject to detailed geological logging and rock quality analysis (RQD) sufficient for Mineral Resource estimation etc. Logging notes presence of geology, alteration, and of economic minerals of interest (if visible). Core was photographed. The total length of the each drillhole has been logged to the same standard (100% length).
Sub-sampling techniques and sample preparation	<ul style="list-style-type: none"> If core, whether cut or sawn and whether quarter, half or all core taken. If non-core, whether riffled, tube sampled, rotary split, etc and whether sampled wet or dry. For all sample types, the nature, quality and appropriateness of the sample preparation technique. Quality control procedures adopted for all sub-sampling stages to maximise representivity of samples. Measures taken to ensure that the sampling is representative of the in situ material collected, including for instance results for field duplicate/second-half sampling. Whether sample sizes are appropriate to the grain size of the material being sampled. 	<ul style="list-style-type: none"> Core samples were sawn. Half-core was taken for analysis. Sample was crushed to 70 % passing 2mm, riffle split off 250g, pulverise split to better than 85% passing 75 microns. Methods are considered appropriate for type of mineralisation being tested. Equipment was cleaned with compressed air between each sample and with clean rock between each batch. Appropriate certified reference material and coarse blanks were inserted. Each batch of 20 samples had a quarter core duplicate inserted. Sample size was appropriate for type of visual mineralisation intersected.
Quality of assay data and laboratory tests	<ul style="list-style-type: none"> The nature, quality and appropriateness of the assaying and laboratory procedures used and whether the technique is considered partial or total. For geophysical tools, spectrometers, handheld XRF instruments, etc, the parameters used in determining the analysis including instrument make and 	<ul style="list-style-type: none"> All samples were assayed by ALS in Lima. Methods used: Preparation PREP31 Analysis Au-AA23 and ME-ICP61 Cu OG-62 for overlimit Cu >1% Pb OG-62 for overlimit Pb >1% Zn OG-62 for overlimit Zn >1%

Criteria	JORC Code explanation	Comment
	<p><i>model, reading times, calibrations factors applied and their derivation, etc.</i></p> <ul style="list-style-type: none"> <i>Nature of quality control procedures adopted (eg standards, blanks, duplicates, external laboratory checks) and whether acceptable levels of accuracy (ie lack of bias) and precision have been established.</i> 	<ul style="list-style-type: none"> <i>Ag OG-62 for overlimit Ag >100ppm</i> <p><i>OREAS standards, blanks, and field duplicates were inserted at appropriate intervals.</i></p>
<p><i>Verification of sampling and assaying</i></p>	<ul style="list-style-type: none"> <i>The verification of significant intersections by either independent or alternative company personnel.</i> <i>The use of twinned holes.</i> <i>Documentation of primary data, data entry procedures, data verification, data storage (physical and electronic) protocols.</i> <i>Discuss any adjustment to assay data.</i> 	<ul style="list-style-type: none"> <i>Intersections validated by two company geologists with sufficient experience.</i> <i>Sampling and logging was carried out in a dedicated warehouse area.</i> <i>Data is being documented and stored on company digital media to industry standards.</i> <i>No adjustments of assay data.</i>
<p><i>Location of data points</i></p>	<ul style="list-style-type: none"> <i>Accuracy and quality of surveys used to locate drill holes (collar and down-hole surveys), trenches, mine workings and other locations used in Mineral Resource estimation.</i> <i>Specification of the grid system used.</i> <i>Quality and adequacy of topographic control.</i> 	<ul style="list-style-type: none"> <i>Hole collar and set out done using conventional GPS and compass methods. Holes will be picked up by qualified surveyor at end of drill campaign.</i> <i>Drill hole deviation was measured with Reflex Ez Trac system. Measurements were taken every 50 meters and the data supplied given to company in digital format.</i> <i>Grid system used is industry standard in area: WGS84 19S.</i>
<p><i>Data spacing and distribution</i></p>	<ul style="list-style-type: none"> <i>Data spacing for reporting of Exploration Results.</i> <i>Whether the data spacing and distribution is sufficient to establish the degree of geological and grade continuity appropriate for the Mineral Resource and Ore Reserve estimation procedure(s) and classifications applied.</i> <i>Whether sample compositing has been applied.</i> 	<ul style="list-style-type: none"> <i>The drill campaign is investigating geophysical anomalies of several hundred metres size.</i> <i>Initial drilling is focusing on core areas in the anomalies and may be followed up later by a tighter spaced grid drilling.</i> <i>Spacing between the 2 holes at Ilo Este is 165 m apart.</i> <i>Spacing between the 2 drillholes executed from platform P-01 and that drilled from platform P-05 at Chancho al Palo was 210 metres.</i> <i>Samples were composited to 2m length where no visible mineralisation. No compositing is envisaged between drillholes.</i>
<p><i>Orientation of data in relation to geological structure</i></p>	<ul style="list-style-type: none"> <i>Whether the orientation of sampling achieves unbiased sampling of possible structures and the extent to which this is known, considering the deposit type.</i> <i>If the relationship between the drilling orientation and the orientation of key mineralised structures is considered to</i> 	<ul style="list-style-type: none"> <i>The drilling was designed to intersect geophysical anomalies at a high angle to local structures.</i> <i>Initial geological observations indicate that various rock units are being successfully traversed which is confirmed by limited surface</i>

Criteria	JORC Code explanation	Comment
	<p><i>have introduced a sampling bias, this should be assessed and reported if material.</i></p>	<p><i>outcrops. No sampling bias is envisaged. However, the true orientation and thickness of the units cannot be determined with any degree of certainty from only limited drill-holes and subsequent drilling will firm up these aspects.</i></p>
<p><i>Sample security</i></p>	<ul style="list-style-type: none"> • <i>The measures taken to ensure sample security.</i> 	<ul style="list-style-type: none"> • <i>A company geologist or trained assistant accepted the core boxes duly marked. After completing quick core logging the boxes were secured and deposited in the bed of a 4x4 truck, and transported to the core shack and stored in the town of El Agarrobal approx. 12 km from the project.</i> • <i>Detailed core logging was undertaken at the core shack in the town of El Agarrobal.</i> • <i>Samples remain under the chain of custody of the company until the samples are physically delivered to ALS laboratories.</i>
<p><i>Audits or reviews</i></p>	<ul style="list-style-type: none"> • <i>The results of any audits or reviews of sampling techniques and data.</i> 	<ul style="list-style-type: none"> • <i>Standard sampling techniques employed with necessary oversight.</i>

For personal use only

Section 2 Reporting of Exploration Results
(Criteria listed in the preceding section also apply to this section)

Criteria	JORC Code explanation	Commentary
Mineral tenement and land tenure status	<ul style="list-style-type: none"> Type, reference name/number, location and ownership including agreements or material issues with third parties such as joint ventures, partnerships, overriding royalties, native title interests, historical sites, wilderness or national park and environmental settings. The security of the tenure held at the time of reporting along with any known impediments to obtaining a licence to operate in the area. 	<ul style="list-style-type: none"> The Ilo Este project is located in four 100% owned exploration concessions of the Company. The Chancho al Palo project is located in four 100% owned exploration concessions of the Company. The current drilling is being carried out on state land. Renewal payments for the tenements are due at the end of June annually. Tenements are in good standing. There are no known impediments to obtaining a licence to operate in the current drill area and all exploration permits have been granted.
Exploration done by other parties	<ul style="list-style-type: none"> Acknowledgment and appraisal of exploration by other parties. 	<ul style="list-style-type: none"> At Ilo Este, previous drilling has been conducted by Rio Tinto Limited and Latin Resources Limited as disclosed in previous announcements, including ASX:SLM release 11 August 2025 The drilling campaign executed by Solis at Chancho al Palo is the first-ever exploration at the site.
Geology	<ul style="list-style-type: none"> Deposit type, geological setting and style of mineralisation. 	<ul style="list-style-type: none"> The Ilo Este area is situated in an area of intrusive geology of Jurassic and Cretaceous age – known locally as the Coastal Belt. The belt is considered capable of hosting porphyry style mineralisation. Both styles of mineralisation are targets during the current Ilo Este drill campaign. At the Chancho al Palo project, two primary mineralisation styles have been identified: the western section of the project area is prospective for IOCG mineralisation while the eastern section demonstrates potential for porphyry-style mineralisation.

For personal use only

<p><i>Drill hole Information</i></p>	<ul style="list-style-type: none"> • A summary of all information material to the understanding of the exploration results including a tabulation of the following information for all Material drill holes: <ul style="list-style-type: none"> ○ easting and northing of the drill hole collar ○ elevation or RL (Reduced Level – elevation above sea level in metres) of the drill hole collar ○ dip and azimuth of the hole ○ hole length • If the exclusion of this information is justified on the basis that the information is not Material and this exclusion does not detract from the understanding of the report, the Competent Person should clearly explain why this is the case. 	<ul style="list-style-type: none"> • The drillhole collar and data is tabulated in Appendix 1 of the release. • Cross sections have not been prepared at this stage due to the limited number of recent assay results; however, sections will be included in future releases as additional drilling and assay data become available to provide a more comprehensive interpretation of the mineralised system. • Geology summary is tabulated in the body of the news release. Including geology, alteration, and presence of visually estimated mineralisation (where appropriate – subject to confirmation by assays).
--------------------------------------	---	--

Criteria	JORC Code explanation	Commentary
<p><i>Data aggregation methods</i></p>	<ul style="list-style-type: none"> • In reporting Exploration Results, weighting averaging techniques, maximum and/or minimum grade truncations (e.g. cutting of high grades) and cut-off grades are usually Material and should be stated. • Where aggregate intercepts incorporate short lengths of high-grade results and longer lengths of low-grade results, the procedure used for such aggregation should be stated and some typical examples of such aggregations should be shown in detail. • The assumptions used for any reporting of metal equivalent values should be clearly stated. 	<ul style="list-style-type: none"> • Intersections are shown in the highlights of the report.
<p><i>Relationship between mineralisation widths and intercept lengths</i></p>	<ul style="list-style-type: none"> • These relationships are particularly important in the reporting of Exploration Results. • If the geometry of the mineralisation with respect to the drill hole angle is known, its nature should be reported. • If it is not known and only the down hole lengths are reported, there should be a clear statement to this effect (e.g. ‘down hole length, true width not known’). 	<ul style="list-style-type: none"> • Visually estimated mineralisation approximately follows certain geological units. • The lengths reported are down-hole lengths and true width is not known. • True widths may become discernible with the completion of more drilling.

For personal use only

<p><i>Diagrams</i></p>	<ul style="list-style-type: none"> • <i>Appropriate maps and sections (with scales) and tabulations of intercepts should be included for any significant discovery being reported. These should include, but not be limited to a plan view of drill hole collar locations and appropriate sectional views.</i> 	<ul style="list-style-type: none"> • <i>Appropriate maps are included in the body of the release.</i>
<p><i>Balanced reporting</i></p>	<ul style="list-style-type: none"> • <i>Where comprehensive reporting of all Exploration Results is not practicable, representative reporting of both low and high grades and/or widths should be practiced avoiding misleading reporting of Exploration Results.</i> 	<ul style="list-style-type: none"> • <i>Estimated visual mineralisation is clearly tabulated for the complete hole in the body of the news release.</i>
<p><i>Other substantive exploration data</i></p>	<ul style="list-style-type: none"> • <i>Other exploration data, if meaningful and material, should be reported including (but not limited to): geological observations; geophysical survey results; geochemical survey results; bulk samples – size and method of treatment; metallurgical test results; bulk density, groundwater, geotechnical and rock characteristics; potential deleterious or contaminating substances.</i> 	<ul style="list-style-type: none"> • <i>Drilling is being carried out on coincident IP and magnetic anomalies.</i>
<p><i>Further work</i></p>	<ul style="list-style-type: none"> • <i>The nature and scale of planned further work (e.g. tests for lateral extensions or depth extensions or large-scale step-out drilling).</i> • <i>Diagrams clearly highlighting the areas of possible extensions, including the main geological interpretations and future drilling areas, provided this information is not commercially sensitive.</i> 	<ul style="list-style-type: none"> • <i>A general figure in the news release shows the main geophysical anomalies used for drill targeting.</i> • <i>Further drilling is being executed on other geophysical anomalies within the project. All data will be synthesized and further drilling will be planned according to results.</i>

For personal use only