

## PHASE II - HEAVY REE & HIGH-GRADE NIOBIUM DRILLING PROGRAM COMMENCES

### Highlights

- **~9,000+ meter Phase II diamond drilling program commences targeting High-grade niobium zone at Kameelburg, following intercepts of up to 4.14 % Nb<sub>2</sub>O<sub>5</sub> (ASX announcement 6th August 2025).**
- **New Nock 800 drill rig mobilised, capable of drilling to ~750 m.**
  - Enables Aldoro to test deeper, high-grade niobium zones along the western margin of the Kameelburg intrusion.
  - Up to 14 diamond drill holes planned to test the high-grade niobium zone.
- **Aldoro commences Heavy Rare Earth (possibly Ionic style) exploration at the Omuronga Project (EPL4933), Namibia with maiden drilling scheduled in the coming weeks.**
- **Ground magnetic survey completed over the Omuronga REE Project (3.42 km<sup>2</sup> at 50 m line spacing), identifying a 1.4 km diameter magnetic anomaly comparable in scale to Kameelburg.**
- **Weathered carbonatite profile mapped to 100-150 m depth, interpreted to host ionic-style Heavy Rare Earth mineralisation.**
- **Up to and 8 hole diamond drilling program at Omuronga**
  - Designed to test both HREE-enriched soils and LREE mineralisation in fresh carbonatite following completion of the soil sampling program.
- **Laboratory assays confirmed elevated REE signatures with 40 soil samples collected demonstrating the heavy REE and Nd+Pr accounts for 18% and 26% of the total REE respectively (ASX announcement 7th October 2025).**
  - In the weathered soil layer, the high value heavy REE as well as Nd + Pr as the high value light REE have been enriched at the weathered top of the carbonatite intrusive.

Aldoro Resources Ltd (“Aldoro”, “the Company”) (ASX: ARN) is pleased to advise that the new diamond drill rigs have mobilised to the Kameelburg project with the Phase II diamond drilling program targeting the high-grade Niobium mineralisation on schedule to commence drilling this week. In addition, a detailed ground magnetic survey has been completed over the Omuronga Heavy REE Project (EPL4933).

### Kameelburg - High-grade Niobium Program

Building on recent high-grade niobium results (including intercepts of up to 4.14% Nb<sub>2</sub>O<sub>5</sub> in hole DD005B), Aldoro's geological team has completed a targeted drilling plan to test the deeper niobium-enriched zones within the Kameelburg carbonatite complex.

The program will utilise the newly commissioned Nock 800 diamond drill rig, capable of reaching depths of approximately 750 metres, allowing the Company to test its model of Niobium enrichment at depth and along the western margin of the intrusion.

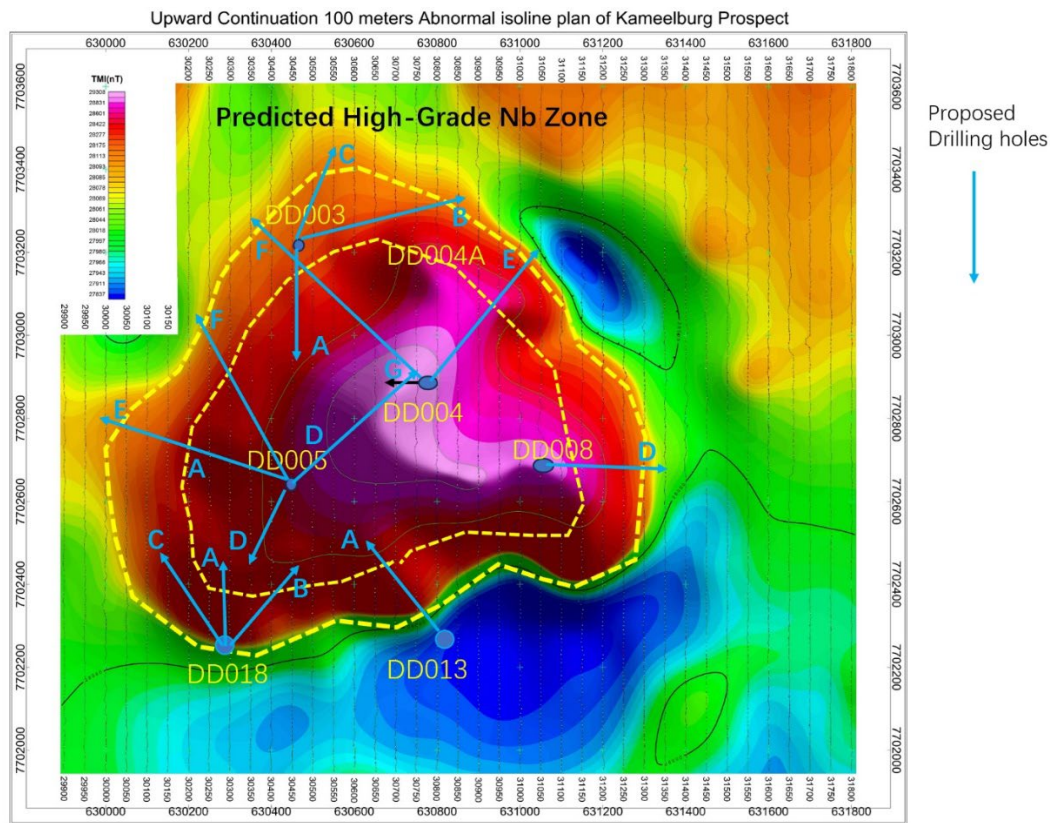


Figure 1: Proposed diamond hole location for the Phase II high-grade niobium targeting program.

Upon completion of this deep drilling phase, Aldoro expects to refine and potentially expand the Kameelburg Mineral Resource. Preliminary modelling indicates the project could ultimately support a resource scale approaching 800 million tonnes, positioning Kameelburg as one of the largest REE and Niobium deposits globally, and potentially the largest REE deposit by remaining contained resources.

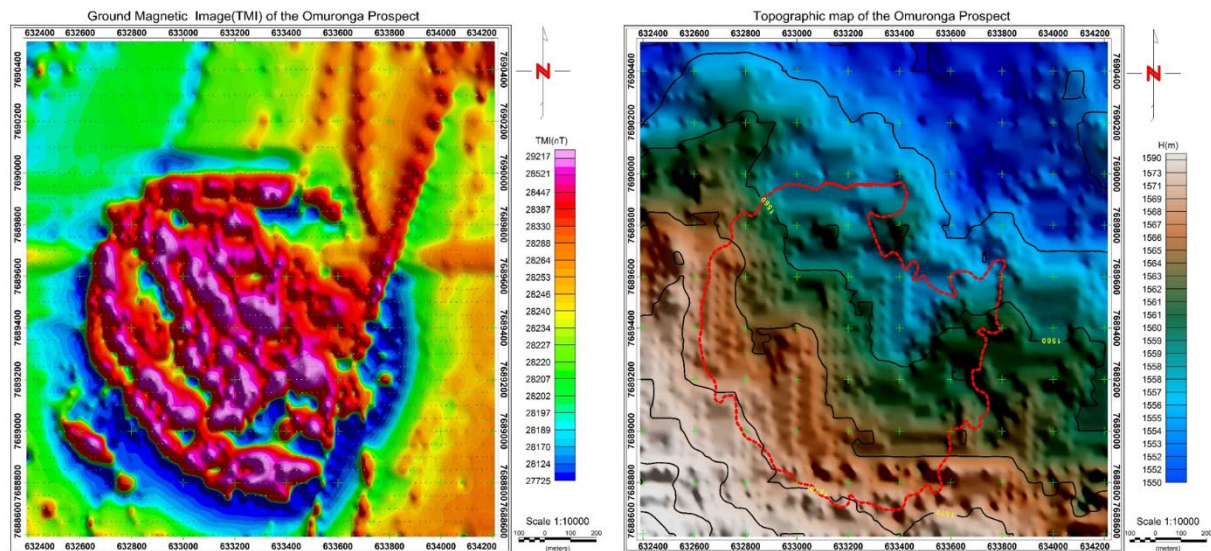
Planned Drillholes for High-Grade Nb Mineralisation Zone					
Collar_ID	WGS84 UTM Zo	Location	Azimuth	Dip	Planned Depth (m)
DD018A	33K	DP002 Pad	360	65	560
DD018B	33K	DP002 Pad	40	65	600
DD018C	33K	DP002 Pad	320	65	600
DD005D	33K	DD005 Pad	225	65	650
DD005E	33K	DD005 Pad	292	60	750
DD005F	33K	DD005 Pad	330	65	700
DD005G	33K	DD005 Pad	45	65	700
DD003A	33K	DD003 Pad	180	60	600
DD003B	33K	DD003 Pad	75	65	700
DD003C	33K	DD003 Pad	22	65	500
DD004E	33K	DD004 Pad	40	60	750
DD004F	33K	DD004 Pad	310	60	750
DD008D	33K	DD008 Pad	90	65	600
DD013A	33K	DD013 Pad	320	65	600

Table 1: Proposed hole locations for the Phase II program over Kameelburg targeting the high-grade Niobium zones.

## Omuronga Heavy REE Program

The Company has completed the ground magnetic survey which was conducted between 6<sup>th</sup> and 13<sup>th</sup> October 2025, comprised 50m line spacing and 20m station intervals across a total area of 3.42 km<sup>2</sup>.

The data identifies a round-shaped magnetic anomaly approximately 1.4 km in diameter, located at the Omuronga prospect. The anomaly displays a geometry comparable in scale to the magnetic feature associated with Aldoro's nearby Kameelburg REE Project, though with notably weaker magnetic intensity.



**Figure 2:** Omuronga Ground magnetic and topographic image of the Omuronga Heavy REE Project.

The reduced magnetic response at Omuronga is interpreted to reflect lower magnetite content within the carbonatite intrusive body, likely the result of intense weathering within the project area.

Based on prior exploration work and topographic analysis, the weathered profile is estimated to extend to depths of 100-150 metres, deepening slightly from southwest to northeast across the intrusion.

Further evidence supporting Omuronga as a compelling drill target include:

- **Circular Magnetic Anomaly (~1 km):** Regional aeromagnetic surveys identified a discrete, dipolar magnetic feature with low radiometric K/Th/U responses, inconsistent with granite but typical of carbonatite or mafic intrusives.
- **Geochemical Validation:** In 2012<sup>1</sup>, a geochemical sampling program was conducted using auger drilling and REE geochemical anomalies were defined. Soil and pXRF analyses show elevated Ca/K ratios and REE signatures, supported by laboratory assays confirming TREE+Y values up to 1,130 ppm (0.11%) - consistent with surface expression above covered carbonatite systems.
- **Alteration & Zonation:** Geochemical trends suggest transitions from granite into Ca-rich intrusive lithologies, with evidence of fenitisation (alkali metasomatism) around the anomaly, diagnostic of buried carbonatite plugs or dykes.

- Regional Fertility: The anomaly lies within ~10 km of the Kameelburg REE-Nb carbonatite located in the Damara Belt, strengthening the likelihood that Omuronga is part of a fertile intrusive field.

Collectively, these geological and geophysical datasets point to a concealed intrusive with carbonatite affinity, providing a strong basis for drilling.

<sup>1</sup> Aldoro commences heavy mineral rare Earth Exploration Program (ASX 7 October 2025):

### Ongoing Omuronga Work Program

A detailed soil sampling program is currently being carried out over the project area and is expected to be completed within the next two weeks.

Planning is also well advanced for the upcoming diamond drilling campaign, with eight (8) holes designed to test two distinct mineralisation styles being:

- Ionic-style Heavy Rare Earth Element (HREE) mineralisation within the weathered and soil horizons; and
- Primary Light Rare Earth Element (LREE) mineralisation within the underlying fresh carbonatite.

### Aldoro Chairperson Quinn Li commented:

*"At Kameelburg, the new high-capacity diamond rig will enable us to test the high-grade Niobium zones identified by our geological model. This exciting development could elevate Kameelburg into the upper echelon of global REE-Nb deposits. It is our expectation that following the completion to the Phase II drilling campaign at Kameelburg will achieve two outcomes being the definition of a large Niobium deposit with good grade and a significant increase in the REE resource model with the expectation that this resource move from inferred to predominantly indicated.*

*In addition, this week's completion of the ground magnetic survey marks another key milestone in our systematic exploration of the Omuronga Project. The anomaly's geometry, coupled with the depth of weathering, supports our dual exploration strategy targeting both ionic and carbonatite-hosted REE mineralisation. We are particularly encouraged by the similarities in scale between Omuronga and our flagship Kameelburg carbonatite complex. "*

### Next Steps

- Commencement of the 9,000+ meter Phase II Kameelburg high-grade Niobium diamond drilling program.
- Updated Mineral Resource estimate for Kameelburg (Q4 2025).
- Completion of Omuronga soil sampling and analysis.
- Integration of Omuronga magnetic and geochemical data for ongoing target refinement.
- Commencement of up to 8 diamond holes in the Omuronga heavy REE project.

*Authorised for and behalf of the Board,*

**Sarah Smith**  
**Company Secretary**

### **About Aldoro Resources**

Aldoro Resources Ltd is an ASX-listed (**ASX: ARN**) mineral exploration and development company. Aldoro has a portfolio of critical minerals including rare earth, lithium, rubidium and base metal projects. The Company's suite of projects include the Kameelburg REE & Niobium Project in Namibia, the Wyemandoo lithium-rubidium-tungsten project, the Niobe lithium-rubidium-tantalum project and the Narndee Igneous Complex project in Western Australia. Following the Disposals, the Kameelburg REE & Niobium Project in Namibia will be ARN's sole project.

### **Disclaimer**

Some of the statements appearing in this announcement may be in the nature of forward-looking statements. You should be aware that such statements are only predictions and are subject to inherent risks and uncertainties. Those risks and uncertainties include factors and risks specific to the industries in which Aldoro operates and proposes to operate as well as general economic conditions, prevailing exchange rates and interest rates and conditions in the financial markets, among other things. Actual events or results may differ materially from the events or results expressed or implied in any forward-looking statement. No forward-looking statement is a guarantee or representation as to future performance or any other future matters, which will be influenced by a number of factors and subject to various uncertainties and contingencies, many of which will be outside Aldoro's control.

Aldoro does not undertake any obligation to update publicly or release any revisions to these forward-looking statements to reflect events or circumstances after today's date or to reflect the occurrence of unanticipated events. No representation or warranty, express or implied, is made as to the fairness, accuracy, completeness or correctness of the information, opinions or conclusions contained in this announcement. To the maximum extent permitted by law, none of Aldoro, its Directors, employees, advisors or agents, nor any other person, accepts any liability for any loss arising from the use of the information contained in this announcement. You are cautioned not to place undue reliance on any forward-looking statement. The forward-looking statements in this announcement reflect views held only as of the date of this announcement.

This announcement is not an offer, invitation or recommendation to subscribe for or purchase securities by Aldoro. Nor does this announcement constitute investment or financial product advice (nor tax, accounting or legal advice) and is not intended to be used for the basis of making an investment decision. Investors should obtain their own advice before making any investment decision.

### **Competent Person Statement**

The information in this announcement that relates to Exploration Results and other technical information is based on information compiled by Dr Minlu Fu (a non-executive director of the Company) and complies with the 2012 Edition of the Australasian Code for Reporting of Exploration Results, Mineral Resources and Ore Reserves (JORC Code). It has been reviewed by Mr Mark Mitchell.

Mr. Mark Mitchell is a Member of the Australasian Institute of Geoscientists (AIG). Mr Mitchell is an independent consultant and not an employee of Aldoro and has sufficient experience that is relevant to the style of mineralisation and type of deposit under consideration and to the activity being undertaken to qualify as a Competent Person as defined in the 2012 Edition of the JORC Code. Mr Mitchell consents to the inclusion in this announcement of the matters based on his information in the form and context in which it appears.

## **Listing Rule 5.23.2**

In relying on the above mentioned ASX announcements and pursuant to ASX Listing Rule 5.23.2, the Company confirms that it is not aware of any new information or data that materially affects the information included in the above-mentioned announcements.

For personal use only

## Section 1: Sampling Techniques and Data

(Criteria in this section apply to all succeeding sections)

Criteria	JORC Code explanation	Commentary
Sampling techniques	<p>Nature and quality of sampling (e.g. cut channels, random chips, or specific specialised industry standard measurement tools appropriate to the minerals under investigation, such as down hole gamma sondes, or handheld XRF instruments, etc). These examples should not be taken as limiting the broad meaning of sampling.</p> <p>Include reference to measures taken to ensure sample representivity and the appropriate calibration of any measurement tools or systems used.</p> <p>Aspects of the determination of mineralisation that are Material to the Public Report.</p> <p>In cases where 'industry standard' work has been done this would be relatively simple (e.g. 'reverse circulation drilling was used to obtain 1 m samples from which 3 kg was pulverised to produce a 30 g charge for fire assay'). In other cases, more explanation may be required, such as where there is coarse gold that has inherent sampling problems. Unusual commodities or mineralisation types (e.g.submarine nodules) may warrant disclosure of detailed information.</p>	<ul style="list-style-type: none"> <li>Echo Vista Exploration were contracted to undertake high resolution ground magnetic survey using GEM systems Overhauser Magnetometers (GSM-19T) over defined survey areas as shown in the text. Survey parameters were 50m line spacing, orientated east west and 20m reading intervals for 3.42km<sup>2</sup> coverage and 68-line km.</li> </ul>
Drilling techniques	<p>Drill type (e.g. core, reverse circulation, open-hole hammer, rotary air blast, auger, Bangka, sonic, etc.) and details (e.g. core diameter, triple or standard tube, depth of diamond tails, face-sampling bit or other type, whether core is oriented and if so, by what method, etc.).</p>	<ul style="list-style-type: none"> <li>No drilling reported.</li> </ul>
Drill sample recovery	<p>Method of recording and assessing core and chip sample recoveries and results assessed.</p> <p>Measures taken to maximise sample recovery and ensure representative nature of the samples.</p> <p>Whether a relationship exists between sample recovery and grade and whether sample bias may have occurred due to preferential loss/gain of fine/coarse material.</p>	<ul style="list-style-type: none"> <li>No drilling reported</li> </ul>
Logging	<p>Whether core and chip samples have been geologically and geotechnically logged to a level of detail to support appropriate Mineral Resource estimation, mining studies and metallurgical studies.</p> <p>Whether logging is qualitative or quantitative in nature. Core (or costean, channel, etc.) photography.</p> <p>The total length and percentage of the relevant intersections logged.</p>	<ul style="list-style-type: none"> <li>No drilling reported</li> </ul>

For personal use only

Criteria	JORC Code explanation	Commentary
Subsampling techniques and sample preparation	<p><i>If core, whether cut or sawn and whether quarter, half or all core taken.</i></p> <p><i>If non-core, whether riffled, tube sampled, rotary split, etc and whether sampled wet or dry.</i></p> <p><i>For all sample types, the nature, quality, and appropriateness of the sample preparation technique.</i></p> <p><i>Quality control procedures adopted for all subsampling stages to maximise representivity of samples.</i></p> <p><i>Measures taken to ensure that the sampling is representative of the in-situ material collected, including for instance results for field duplicate/second-half sampling.</i></p> <p><i>Whether sample sizes are appropriate to the grain size of the material being sampled.</i></p>	<ul style="list-style-type: none"> <li>• No drilling reported.</li> </ul>
Quality of assay data and laboratory tests	<p><i>The nature, quality and appropriateness of the assaying and laboratory procedures used and whether the technique is considered partial or total.</i></p> <p><i>For geophysical tools, spectrometers, handheld XRF instruments, etc, the parameters used in determining the analysis including instrument make and model, reading times, calibrations factors applied and their derivation, etc.</i></p> <p><i>Nature of quality control procedures adopted (e.g. standards, blanks, duplicates, external laboratory checks) and whether acceptable levels of accuracy (i.e. lack of bias) and precision have been established.</i></p>	<ul style="list-style-type: none"> <li>• The ground magnetic instruments and data was subject to the following tests and inspections.</li> <li>• Noise tests</li> <li>• Survey instrument precision and consistency Assessments.</li> <li>• Probe consistency Test.</li> <li>• Base station test – cross-sectional method</li> <li>• Magnetic survey scanning measurement field observation quality inspection.</li> <li>• All tests were within instrument tolerances and showed consistency with these tolerances.</li> </ul>
Verification of sampling and assaying	<p><i>The verification of significant intersections by either independent or alternative company personnel.</i></p> <p><i>The use of twinned holes.</i></p> <p><i>Documentation of primary data, data entry procedures, data verification, data storage (physical and electronic) protocols.</i></p> <p><i>Discuss any adjustment to assay data.</i></p>	<ul style="list-style-type: none"> <li>• Ground magnetic data was compared to the airborne data with the broad scale signal features consisted between the two data sets.</li> </ul>
Location of data points	<p><i>Accuracy and quality of surveys used to locate drillholes (collar and downhole surveys), trenches, mine workings and other locations used in Mineral Resource estimation.</i></p> <p><i>Specification of the grid system used.</i></p> <p><i>Quality and adequacy of topographic control.</i></p>	<ul style="list-style-type: none"> <li>• Built in GPS in GEM systems Overhauser Magnetometers with real-time transformations to UTM WGS84 33S.</li> <li>• No mineral resource estimation was conducted</li> </ul>
Data spacing and distribution	<p><i>Data spacing for reporting of Exploration Results.</i></p> <p><i>Whether the data spacing and distribution is sufficient to establish the degree of geological and grade continuity appropriate for the Mineral Resource and Ore Reserve estimation procedure(s) and classifications applied.</i></p> <p><i>Whether sample compositing has been applied.</i></p>	<ul style="list-style-type: none"> <li>• Magnetic reading spacing is considered sufficient for delineating local magnetic gradients and modelling depth to and source morphologies.</li> </ul>
Orientation of data in	<p><i>Whether the orientation of sampling achieves unbiased sampling of possible structures and the</i></p>	<ul style="list-style-type: none"> <li>• The survey was conducted on East -West lines across the N-S strike of most of the geology,</li> </ul>

Criteria	JORC Code explanation	Commentary
relation to geological structure	<p><i>extent to which this is known, considering the deposit type.</i></p> <p><i>If the relationship between the drilling orientation and the orientation of key mineralised structures is considered to have introduced a sampling bias, this should be assessed and reported if material.</i></p>	<p>therefore the orientation is considered appropriate.</p> <ul style="list-style-type: none"> <li>No drilling conducted.</li> </ul>
Sample security	<p><i>The measures taken to ensure sample security.</i></p>	<ul style="list-style-type: none"> <li>The data was backed up each day on a secure laptop</li> </ul>
Audits or reviews	<p><i>The results of any audits or reviews of sampling techniques and data.</i></p>	<ul style="list-style-type: none"> <li>No detailed audit or reviews of the geophysical data other than the instrument tests and inspections.</li> </ul>

## Section 2: Reporting of Exploration Results

(Criteria listed in the preceding section also apply to this section)

Criteria	JORC Code explanation	Commentary
Mineral tenement and land tenure status	<p><i>Type, reference name/number, location and ownership including agreements or material issues with third parties such as joint ventures, partnerships, overriding royalties, native title interests, historical sites, wilderness or national park and environmental settings.</i></p> <p><i>The security of the tenure held at the time of reporting along with any known impediments to obtaining a licence to operate in the area.</i></p>	<ul style="list-style-type: none"> <li>The Competent Person is aware the Namibian Ministry of Mines and Energy approved the transfer of the Kameelburg Project's Exclusive Prospecting Licenses (EPL 7372, 7373 and 7895) from Logan Exploration &amp; Investments CC to the Aldoro JV operating company Kameelburg Exploration Mining (Pty) Ltd.</li> <li>The Competent Person is unaware of any impediments for ongoing exploration</li> </ul>
Exploration done by other parties	<p><i>Acknowledgment and appraisal of exploration by other parties.</i></p>	<ul style="list-style-type: none"> <li>Limited exploration work has been completed by previous operators, Kinloch Resources who identified the geophysical target and completed a soil geochemistry traverse over the target.</li> </ul>
Geology	<p><i>Deposit type, geological setting and style of mineralisation.</i></p>	<ul style="list-style-type: none"> <li>The mineralisation style being sought at Omuronga is a carbonate hosted REE and Nb, associated with magnetite.</li> <li>The larger area is the Kameelburg Project located in the northern Central Damara Orogenic Belt in Namibia and covers the Cretaceous Kameelburg Carbonatite plug and associated radial dykes intruding precursor syenites in the older host Neoproterozoic marbles and schists. Several other carbonatites are known locally including Kalkfeld (Eisenberg), Osongombo and Okorusu.</li> </ul>
Drillhole information	<p><i>A summary of all information material to the understanding of the exploration results including a tabulation of the following information for all Material drillholes:</i></p> <p><i>easting and northing of the drillhole collar</i></p> <p><i>elevation or RL (Reduced Level – elevation above sea level in metres) of the drillhole collar</i></p> <p><i>dip and azimuth of the hole</i></p> <p><i>downhole length and interception depth</i></p> <p><i>hole length.</i></p>	<ul style="list-style-type: none"> <li>No drilling conducted</li> </ul>

Criteria	JORC Code explanation	Commentary
	<i>If the exclusion of this information is justified on the basis that the information is not Material and this exclusion does not detract from the understanding of the report, the Competent Person should clearly explain why this is the case.</i>	
<b>Data aggregation methods</b>	<p><i>In reporting Exploration Results, weighting averaging techniques, maximum and/or minimum grade truncations (e.g. cutting of high grades) and cut-off grades are usually Material and should be stated.</i></p> <p><i>Where aggregate intercepts incorporate short lengths of high-grade results and longer lengths of low-grade results, the procedure used for such aggregation should be stated and some typical examples of such aggregations should be shown in detail.</i></p> <p><i>The assumptions used for any reporting of metal equivalent values should be clearly stated.</i></p>	<ul style="list-style-type: none"> <li>• No aggregated methods are reported</li> </ul>
<b>Relationship between mineralisation widths and intercept lengths</b>	<p><i>These relationships are particularly important in the reporting of Exploration Results.</i></p> <p><i>If the geometry of the mineralisation with respect to the drillhole angle is known, its nature should be reported.</i></p> <p><i>If it is not known and only the downhole lengths are reported, there should be a clear statement to this effect (e.g. 'downhole length, true width not known').</i></p>	<ul style="list-style-type: none"> <li>• No relationship has been established at present due to the early stage of exploration</li> </ul>
<b>Diagrams</b>	<i>Appropriate maps and sections (with scales) and tabulations of intercepts should be included for any significant discovery being reported These should include, but not be limited to a plan view of drillhole collar locations and appropriate sectional views.</i>	<ul style="list-style-type: none"> <li>• Appropriate location diagram is presented in the text. The diagram is indicative only as no assumptions of grade, extent or depth are made</li> </ul>
<b>Balanced reporting</b>	<i>Where comprehensive reporting of all Exploration Results is not practicable, representative reporting of both low and high grades and/or widths should be practiced to avoid misleading reporting of Exploration Results.</i>	<ul style="list-style-type: none"> <li>• Only pertinent results are given as due to the relevance of the announcement</li> </ul>
<b>Other substantive exploration data</b>	<i>Other exploration data, if meaningful and material, should be reported including (but not limited to): geological observations; geophysical survey results; geochemical survey results; bulk samples – size and method of treatment; metallurgical test results; bulk density, groundwater, geotechnical and rock characteristics; potential deleterious or contaminating substances.</i>	<ul style="list-style-type: none"> <li>• There is no other substantive exploration data provided or withheld as this announcement deals with this early phase exploration target</li> </ul>
<b>Further work</b>	<p><i>The nature and scale of planned further work (e.g. tests for lateral extensions or depth extensions or large-scale step-out drilling).</i></p> <p><i>Diagrams clearly highlighting the areas of possible extensions, including the main geological interpretations and future drilling areas, provided this information is not commercially sensitive.</i></p>	<ul style="list-style-type: none"> <li>• Ground magnetic surveying over the Omuronga target was completed. The results will allow placement of drill holes to test the target. Drilling is expected to be conducted late this quarter.</li> <li>• Forward work programme covered in Next Steps in the text.</li> <li>• Diagrams are provided in the main body of the release.</li> </ul>