

17 October 2025 - ASX Announcement

RC and Power Auger Drilling underway at Dadjan and Tole Gold Projects, Guinea

Maiden RC drilling has commenced at Dadjan, and power auger drilling underway at NE and Central Tole

Further trench, rock chip, soil and dump sample results from Dadjan and Tole received

Highlights

- 5,000m of Reverse Cycle (RC) drilling underway at Dadjan Main Zone, Grand Plateau, and Tole Main Zone (Fig.1).
- Dadjan has more than 50 years of recorded artisanal mining on the permit area, with no drilling ever undertaken.
- 7,500 m of Power Auger drilling underway at NE Tole and Central Tole.
- Remaining trench, soil, rock-chip, and trench assays received.
- Better results from Dadjan include:
 - **0.7m at 5.61 g/t Au (trench sample)**
 - **2m at 1.42 g/t Au (trench sample)**
 - **2m at 1.73 g/t Au (trench sample)**
 - **3.99 g/t Au (soil sample)**
 - **2.61 g/t Au (dump sample)**
 - **573 ppb Au (dump sample)**
 - **390 ppb Au (dump sample)**
- Better results from Tole include:
 - **41.35 g/t Au (rock chip sample)**
 - **13.09 g/t Au (rock chip sample)**
 - **2.01 g/t Au (rock chip sample)**
 - **4m at 1.88 g/t Au (trench sample) including;**



- 2m at 2.66 g/t Au, and
 - 2m at 1.1 g/t Au
 - 2m at 7.45 g/t Au (trench sample)
 - 2m at 1.28 g/t Au (trench sample)
 - 2.26 g/t Au (soil sample)
- Exploration across the Company's 1,000km² portfolio has accelerated, supported by its recently completed placement and c.\$15.5m cash balance¹.



Figure 1 – RC Drilling underway at the Dadjan Gold Project Guinea, the first recorded drilling on the permit, with 50 years of recorded artisanal mining.

For further information visit our website at Desotoresources.com or contact:

Chris Swallow

Managing Director

P: +61 412 174 882

E: cs@desotoresources.com

¹DES ASX Announcement: \$14M Strategic Placement as Drilling Begins in Guinea (9th October 2025)



DeSoto Resources Limited (ASX:DES) (“DES” or the “Company”) is pleased to announce drilling has commenced at its Dadjan and Tole Projects.

Dadjan Project: Results and Further Work Plans

The soil sampling program at Dadjan has continued to produce some encouraging results, with values of up to 3.19 g/t Au received (Figure 2). All Dadjan trench results have now been received with the latest results up to 5.61 g/t Au (Figure 3).

A 3,800 metre RC drilling program across Dadjan Main Zone and Grand Plateau is currently underway (Figure 3).

While having seen no modern-day exploration, including drilling, Dadjan has more the 50 years of recorded artisanal mining on its tenure, with numerous permanent camps and villages set up around the tenure supporting a local non-mechanised gold industry.

DeSoto retains a positive relationship with the local community and as part of the current drilling program has upgraded local tracks and roads and drilled new water bores.

Full results and their locations can be found in Tables 1, 2, and 3.

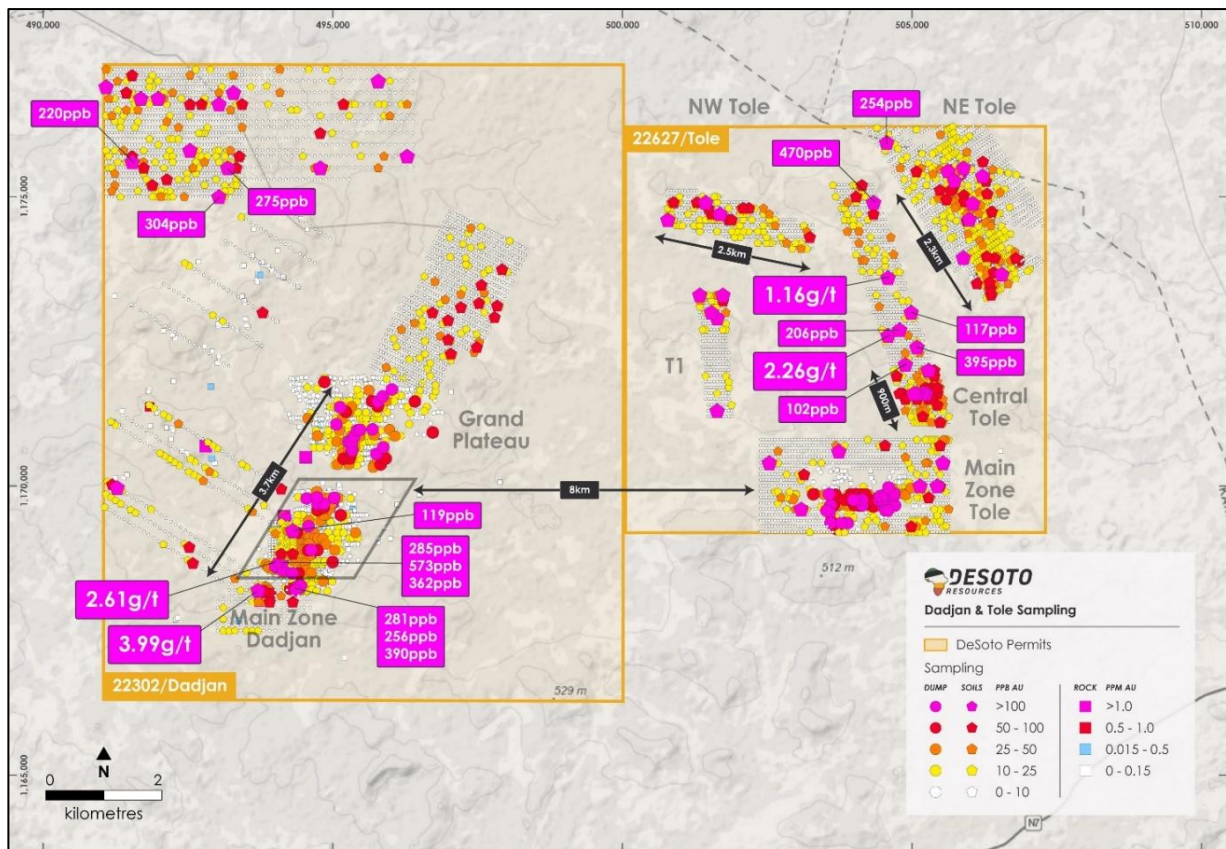


Figure 2: Dadjan and Tole soil sampling and rock chip results. NOTE figure includes previously reported soil, dump, auger, and rock chip sampling results^{2,3,4,5,6,7,8,9}

² DES ASX Announcement Drilling Commences Over 2.7km-long Gold in Soil Anomaly (5 May 2025)
³ DES ASX Announcement Dadjan Gold Anomaly Extends to 3.6km (9 May 2025)
⁴ DES ASX Announcement New 1.3km-long Gold Anomaly at Tole (19 May 2025)
⁵ DES ASX Announcement Encouraging results from shallow drilling at Dadjan (24 June 2025)
⁶ DES ASX Announcement 8m @ 18g/t Au from surface at Tole (21 July 2025)
⁷ DES ASX Announcement Guinea Exploration Update (dates 24 July 2025)
⁸ DES ASX Announcement Soil Sampling Outlines New Gold Zones at Tole and Dadjan (12 September 2025)
⁹ DES ASX Announcement New and Coherent Zones Emerge as Results Continue to Build Confidence at Tole (30 September 2025)

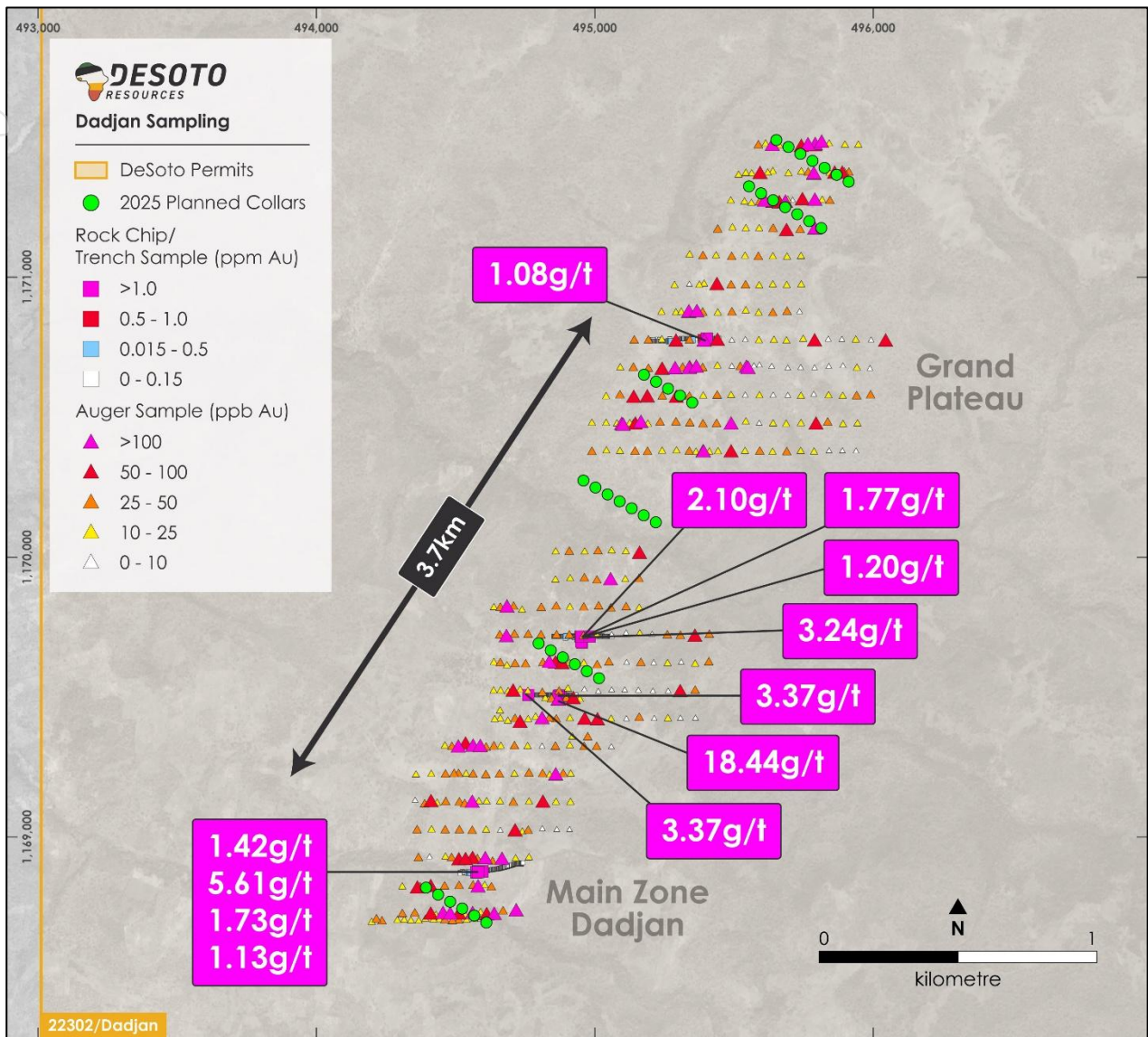


Figure 3: Dadjan trench and rock chip results overlain with planned RC drill collars. NOTES: (1) figure includes previously reported auger, trench, and rock chip sampling results.^{15, 17} (2) the central drill line through an unsampled section is testing a structural target beneath alluvial cover.

Tole Project: Results and Current Work Plans

Soil sampling at NE Tole and Central Tole have produced soil sample results of up to 2.26 g/t Au (Fig. 2). All trench and rock chip sample results from Tole Main Zone are now received with results up to 41.35 g/t Au (Fig. 4).

A 7,500 metre Power Auger drilling program is currently underway at NE Tole and Central Tole.

In addition, a 1,200 metre RC drilling program has been planned at Tole Main Zone (Fig. 4) and will commence once RC drilling at Dadjan is complete.

Full results and their locations can be found in Tables 1, 2, and 3.

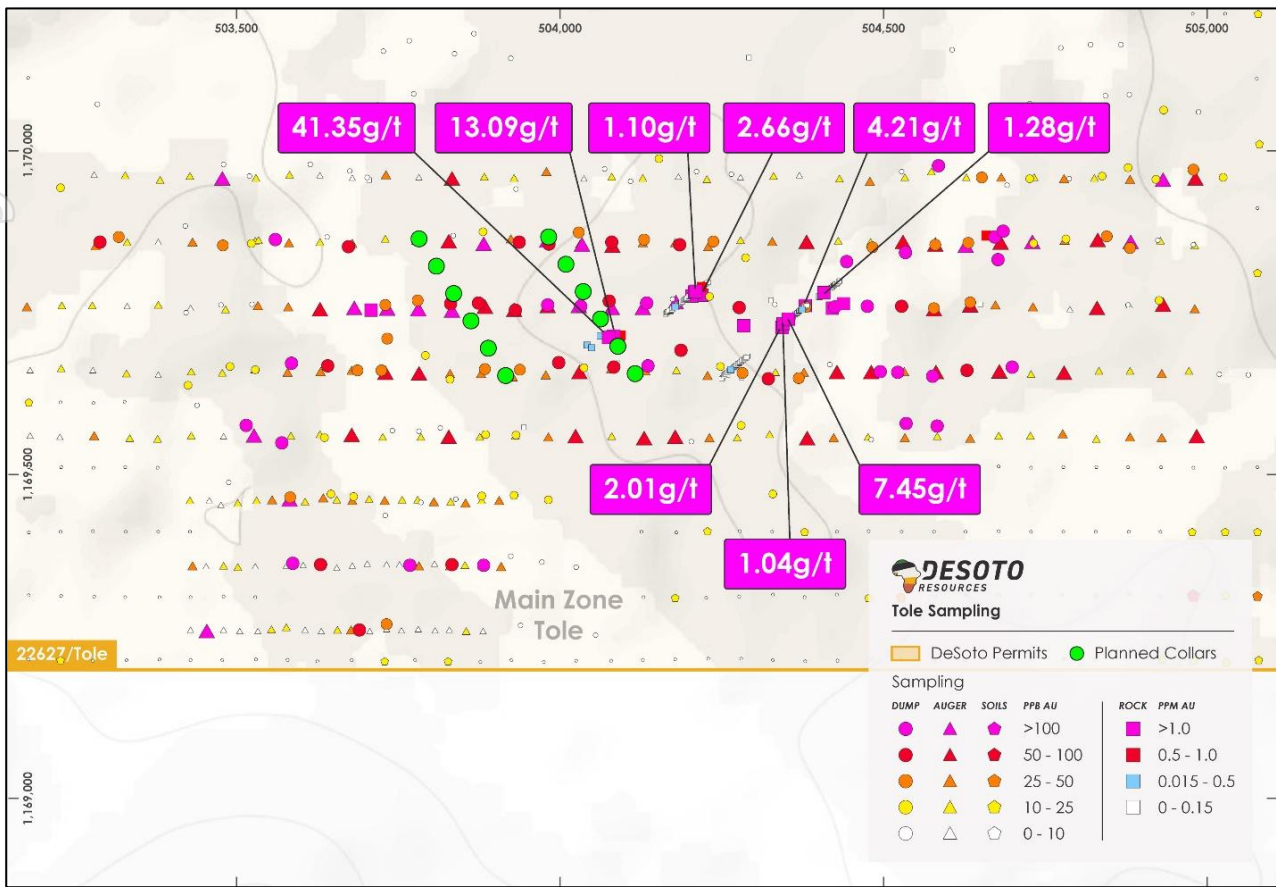


Figure 4: Tole Main Zone trench and rock chip results overlain with planned RC drill collars. NOTE figure includes previously reported soil, dump, auger, and rock chip sampling results^{10,11,12,13,14,15,16,17,18}

Regional Exploration

The Company is also continuing to explore its 934km² Siguiiri land holding with further exploration across Tole, Moiko, Alamakono, Oromo, Falama, Syncerus-Komah, and Dabidiana Projects, all located in the Siguiiri Basin, Guinea (Fig. 5).

At the Syncerus-Komah project, soil, rock chip and dump sampling is underway. Bulk leach extractable gold (BLEG) sampling and soil sampling programs will commence over the Syncerus-Komah permit in the coming weeks.

Soil sampling is also currently underway at Timbakouna to infill areas not covered by rock chip or dump sampling. BLEG soil sampling programs at Moiko and Alamakono have been completed with the samples sent to Bureau Veritas in Perth, Western Australia for analysis.

The Company will continue to explore its 1,000km² Project tenure with low-cost, early-stage programs such as regional BLEG stream sediment sampling, detailed soil geochemistry and geological mapping to refine target areas. Where regolith conditions allow, power auger

¹⁰ DES ASX Announcement Drilling Commences Over 2.7km-long Gold in Soil Anomaly (5 May 2025)

¹¹ DES ASX Announcement Dadjan Gold Anomaly Extends to 3.6km (9 May 2025)

¹² DES ASX Announcement New 1.3km-long Gold Anomaly at Tole (19 May 2025)

¹³ DES ASX Announcement Encouraging results from shallow drilling at Dadjan (24 June 2025)

¹⁴ DES ASX Announcement 8m @ 18g/t Au from surface at Tole (21 July 2025)

¹⁵ DES ASX Announcement Guinea Exploration Update (dates 24 July 2025)

¹⁶ DES ASX Announcement Trench Results Return High-Grades Ahead of Maiden Drilling

¹⁷ DES ASX Announcement Soil Sampling Outlines New Gold Zones at Tole and Dadjan (12 September 2025)

¹⁸ DES ASX Announcement New and Coherent Zones Emerge as Results Continue to Build Confidence at Tole (30 September 2025)



drilling is used to sample beneath surface cover directly into the weathered bedrock, providing a rapid and low-cost indication of bedrock mineralisation.

Through this methodology, targets are then advanced to shallow reconnaissance power auger drilling, progressing to aircore or RC drilling.

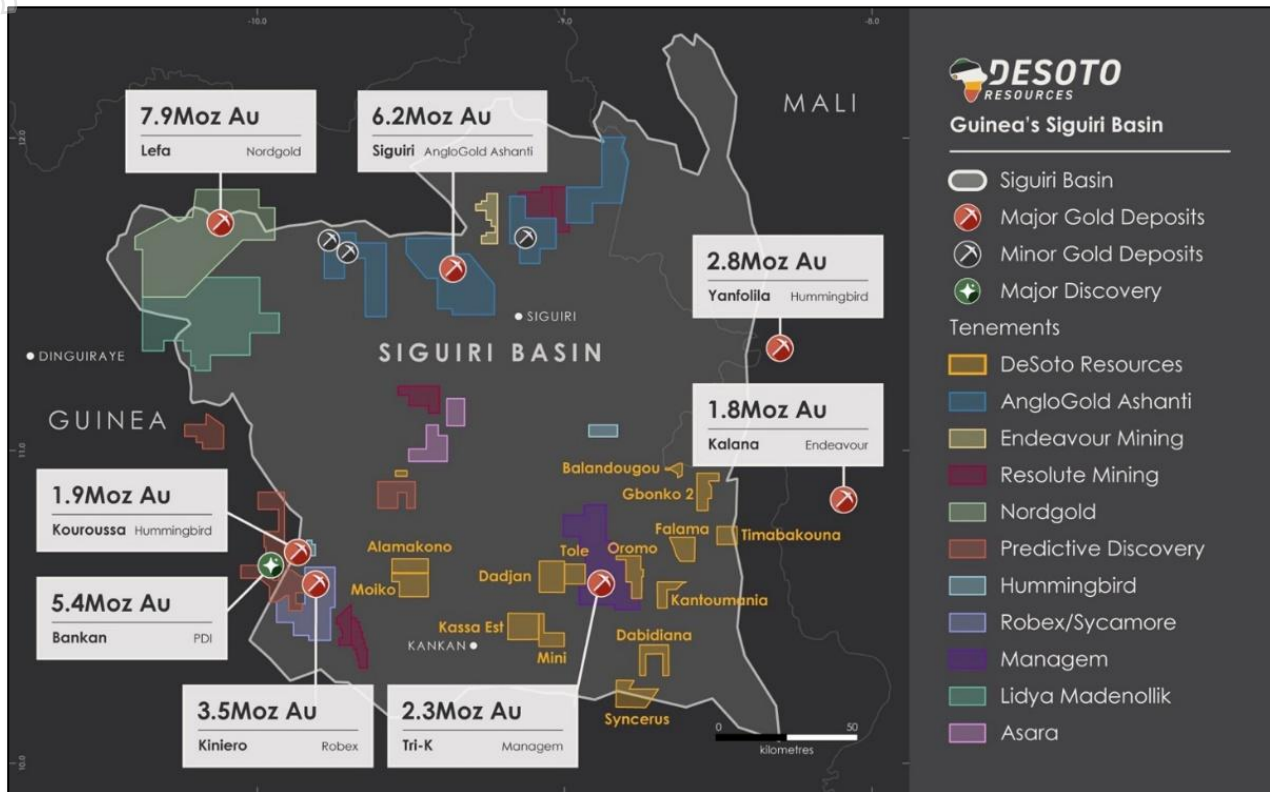


Figure 3: DeSoto's portfolio of Applications, Reconnaissance and Exploration Authorisations, located in the Siguiri Basin, Guinea.

-END-

This release is authorised by the Board of Directors of DeSoto Resources Limited.

For further information visit our website at Desotoresources.com or contact:

Chris Swallow

Managing Director

P: +61 412 174 882

E: cs@desotoresources.com

COMPETENT PERSONS STATEMENT

The information in this report that relates to exploration results is based on and fairly represents information and supporting documentation prepared by Ms Rebecca Morgan. Ms Morgan is a consultant to the company, is a member of the Australian Institute of Geoscientists and has sufficient experience of relevance to the styles of mineralisation and types of deposits under consideration, and to the activities undertaken to qualify as Competent Persons as defined in the 2012 Edition of the Joint Ore Reserves Committee (JORC) Australasian Code for Reporting of Exploration Results, Mineral Resources and Ore Reserves. Ms Morgan consents to the inclusion in this report of the matters based on this information in the form and context in which they appear.



Table 1. Trench and Rock Chip Sample Results

PROJECT	Sample ID	Easting	Northing	mRL	Type	Trench ID	From (m)	To (m)	Sample Width (m)	Au (ppm)
Dadjan	RK10690	494735	1168895	436	Rockchip	TR004	n/a	n/a	n/a	0.04
Dadjan	RK10691	494734	1168895	435	Rockchip	TR004	n/a	n/a	n/a	0.02
Dadjan	RK10692	494516	1168862	424	Rockchip	TR004	n/a	n/a	n/a	0.01
Dadjan	RK10693	494517	1168861	421	Rockchip	TR004	n/a	n/a	n/a	0.09
Dadjan	RK10694	494518	1168860	426	Rockchip	TR004	n/a	n/a	n/a	0.005
Dadjan	RK10695	494520	1168862	426	Rockchip	TR004	n/a	n/a	n/a	0.01
Dadjan	RK10696	494524	1168865	441	Rockchip	TR004	n/a	n/a	n/a	0.005
Dadjan	RK10697	494534	1168864	419	Rockchip	TR004	n/a	n/a	n/a	0.1
Dadjan	RK10698	494533	1168861	422	Rockchip	TR004	n/a	n/a	n/a	0.14
Dadjan	RK10699	494574	1168862	410	Rockchip	TR004	n/a	n/a	n/a	0.11
Dadjan	RK10700	494580	1168866	429	Rockchip	TR004	n/a	n/a	n/a	5.61
Dadjan	RK10701	494596	1168866	428	Rockchip	TR004	n/a	n/a	n/a	1.13
Dadjan	RK10702	494654	1168878	425	Rockchip	TR004	n/a	n/a	n/a	0.005
Dadjan	RK10703	494698	1168888	442	Rockchip	TR004	n/a	n/a	n/a	0.005
Dadjan	RK10704	494703	1168889	438	Rockchip	TR004	n/a	n/a	n/a	0.005
Dadjan	RK10705	494726	1168896	438	Rockchip	TR004	n/a	n/a	n/a	0.005
Dadjan	RK10706	494736	1168893	441	Rockchip	TR004	n/a	n/a	n/a	0.02
Dadjan	RK10827	495207	1170776	407	Rockchip	TR005	n/a	n/a	n/a	0.02
Dadjan	RK10828	495209	1170776	405	Rockchip	TR005	n/a	n/a	n/a	0.01
Dadjan	RK10829	495212	1170776	409	Rockchip	TR005	n/a	n/a	n/a	0.02
Dadjan	RK10830	495218	1170776	407	Rockchip	TR005	n/a	n/a	n/a	0.02
Dadjan	RK10831	495224	1170777	403	Rockchip	TR005	n/a	n/a	n/a	0.03
Dadjan	RK10832	495228	1170777	405	Rockchip	TR005	n/a	n/a	n/a	0.03
Dadjan	RK10833	495232	1170776	406	Rockchip	TR005	n/a	n/a	n/a	0.07
Dadjan	RK10834	495234	1170776	409	Rockchip	TR005	n/a	n/a	n/a	0.11
Dadjan	RK10862	495281	1170769	406	Rockchip	TR005	n/a	n/a	n/a	0.2
Dadjan	RK10863	495269	1170778	404	Rockchip	TR005	n/a	n/a	n/a	0.11
Dadjan	RK10962	495350	1170775	417	Rockchip	TR005	n/a	n/a	n/a	0.18
Dadjan	RK10963	495365	1170779	417	Rockchip	TR005	n/a	n/a	n/a	0.01
Dadjan	RK10964	495377	1170779	417	Rockchip	TR005	n/a	n/a	n/a	0.01
Dadjan	RK10965	495389	1170779	417	Rockchip	TR005	n/a	n/a	n/a	0.02
Dadjan	RK10966	495400	1170780	417	Rockchip	TR005	n/a	n/a	n/a	0.01
Dadjan	RK10711	494516	1168860	431	Trench	TR004	0	2	2	0.05
Dadjan	RK10712	494518	1168861	431	Trench	TR004	2	4	2	0.005
Dadjan	RK10713	494520	1168861	431	Trench	TR004	4	6	2	0.005
Dadjan	RK10714	494522	1168861	431	Trench	TR004	6	8	2	0.005
Dadjan	RK10715	494524	1168862	430	Trench	TR004	8	10	2	0.005
Dadjan	RK10716	494526	1168862	430	Trench	TR004	10	12	2	0.005
Dadjan	RK10717	494528	1168862	430	Trench	TR004	12	14	2	0.005
Dadjan	RK10718	494530	1168863	430	Trench	TR004	14	16	2	0.03
Dadjan	RK10719	494532	1168863	431	Trench	TR004	16	18	2	0.02
Dadjan	RK10720	494534	1168862	431	Trench	TR004	18	20	2	0.005
Dadjan	RK10721	494536	1168862	431	Trench	TR004	20	22	2	0.005
Dadjan	RK10722	494538	1168862	431	Trench	TR004	22	24	2	0.005
Dadjan	RK10723	494540	1168862	431	Trench	TR004	24	26	2	0.01
Dadjan	RK10724	494542	1168862	431	Trench	TR004	26	28	2	0.005
Dadjan	RK10725	494544	1168862	431	Trench	TR004	28	30	2	0.005
Dadjan	RK10726	494546	1168862	431	Trench	TR004	30	32	2	0.42
Dadjan	RK10727	494548	1168862	431	Trench	TR004	32	34	2	0.12
Dadjan	RK10728	494550	1168862	431	Trench	TR004	34	36	2	0.17
Dadjan	RK10729	494552	1168862	431	Trench	TR004	36	38	2	0.13
Dadjan	RK10730	494554	1168862	431	Trench	TR004	38	40	2	0.27

For personal use only



PROJECT	Sample ID	Easting	Northing	mRL	Type	Trench ID	From (m)	To (m)	Sample Width (m)	Au (ppm)
Dadjan	RK10731	494556	1168862	430	Trench	TR004	40	42	2	0.03
Dadjan	RK10732	494558	1168862	431	Trench	TR004	42	44	2	0.03
Dadjan	RK10733	494560	1168862	431	Trench	TR004	44	46	2	0.04
Dadjan	RK10734	494562	1168862	430	Trench	TR004	46	48	2	0.03
Dadjan	RK10735	494564	1168862	430	Trench	TR004	48	50	2	0.02
Dadjan	RK10736	494566	1168862	430	Trench	TR004	50	52	2	0.07
Dadjan	RK10737	494568	1168863	430	Trench	TR004	52	54	2	0.07
Dadjan	RK10738	494570	1168863	430	Trench	TR004	54	56	2	0.05
Dadjan	RK10739	494572	1168863	430	Trench	TR004	56	58	2	0.07
Dadjan	RK10740	494574	1168863	430	Trench	TR004	58	60	2	1.42
Dadjan	RK10741	494576	1168863	430	Trench	TR004	60	62	2	0.08
Dadjan	RK10742	494578	1168864	430	Trench	TR004	62	64	2	0.12
Dadjan	RK10743	494580	1168864	430	Trench	TR004	64	66	2	1.73
Dadjan	RK10744	494582	1168864	430	Trench	TR004	66	68	2	0.04
Dadjan	RK10745	494584	1168865	430	Trench	TR004	68	70	2	0.05
Dadjan	RK10746	494586	1168865	430	Trench	TR004	70	72	2	0.04
Dadjan	RK10747	494588	1168865	429	Trench	TR004	72	74	2	0.03
Dadjan	RK10748	494590	1168866	429	Trench	TR004	74	76	2	0.08
Dadjan	RK10749	494592	1168866	429	Trench	TR004	76	78	2	0.05
Dadjan	RK10750	494594	1168866	428	Trench	TR004	78	80	2	0.03
Dadjan	RK10751	494596	1168867	429	Trench	TR004	80	82	2	0.08
Dadjan	RK10752	494597	1168867	429	Trench	TR004	82	84	2	0.08
Dadjan	RK10753	494599	1168868	429	Trench	TR004	84	86	2	0.04
Dadjan	RK10754	494601	1168868	428	Trench	TR004	86	88	2	0.04
Dadjan	RK10755	494603	1168868	426	Trench	TR004	88	90	2	0.1
Dadjan	RK10756	494605	1168869	425	Trench	TR004	90	92	2	0.03
Dadjan	RK10757	494607	1168869	425	Trench	TR004	92	94	2	0.05
Dadjan	RK10758	494609	1168870	425	Trench	TR004	94	96	2	0.03
Dadjan	RK10759	494611	1168870	426	Trench	TR004	96	98	2	0.02
Dadjan	RK10760	494613	1168870	427	Trench	TR004	98	100	2	0.02
Dadjan	RK10761	494615	1168870	427	Trench	TR004	100	102	2	0.07
Dadjan	RK10762	494617	1168871	427	Trench	TR004	102	104	2	0.04
Dadjan	RK10763	494619	1168871	427	Trench	TR004	104	106	2	0.02
Dadjan	RK10764	494621	1168871	427	Trench	TR004	106	108	2	0.02
Dadjan	RK10765	494623	1168871	427	Trench	TR004	108	110	2	0.02
Dadjan	RK10766	494625	1168872	428	Trench	TR004	110	112	2	0.03
Dadjan	RK10767	494627	1168872	427	Trench	TR004	112	114	2	0.02
Dadjan	RK10768	494629	1168872	427	Trench	TR004	114	116	2	0.02
Dadjan	RK10769	494631	1168873	427	Trench	TR004	116	118	2	0.02
Dadjan	RK10770	494633	1168873	427	Trench	TR004	118	120	2	0.02
Dadjan	RK10771	494635	1168873	427	Trench	TR004	120	122	2	0.02
Dadjan	RK10772	494637	1168874	427	Trench	TR004	122	124	2	0.02
Dadjan	RK10773	494639	1168874	427	Trench	TR004	124	126	2	0.02
Dadjan	RK10774	494641	1168874	426	Trench	TR004	126	128	2	0.02
Dadjan	RK10775	494643	1168875	426	Trench	TR004	128	130	2	0.02
Dadjan	RK10776	494645	1168875	426	Trench	TR004	130	132	2	0.03
Dadjan	RK10777	494647	1168875	426	Trench	TR004	132	134	2	0.03
Dadjan	RK10778	494649	1168875	426	Trench	TR004	134	136	2	0.02
Dadjan	RK10779	494651	1168876	426	Trench	TR004	136	138	2	0.02
Dadjan	RK10780	494653	1168876	426	Trench	TR004	138	140	2	0.04
Dadjan	RK10781	494655	1168876	426	Trench	TR004	140	142	2	0.04
Dadjan	RK10782	494657	1168877	426	Trench	TR004	142	144	2	0.02
Dadjan	RK10783	494659	1168877	426	Trench	TR004	144	146	2	0.03
Dadjan	RK10784	494661	1168878	426	Trench	TR004	146	148	2	0.01
Dadjan	RK10785	494662	1168878	426	Trench	TR004	148	150	2	0.01



PROJECT	Sample ID	Easting	Northing	mRL	Type	Trench ID	From (m)	To (m)	Sample Width (m)	Au (ppm)
Dadjan	RK10786	494664	1168879	426	Trench	TR004	150	152	2	0.01
Dadjan	RK10787	494666	1168879	426	Trench	TR004	152	154	2	0.01
Dadjan	RK10788	494668	1168880	426	Trench	TR004	154	156	2	0.01
Dadjan	RK10789	494670	1168880	426	Trench	TR004	156	158	2	0.01
Dadjan	RK10790	494672	1168881	426	Trench	TR004	158	160	2	0.01
Dadjan	RK10791	494674	1168881	426	Trench	TR004	160	162	2	0.01
Dadjan	RK10792	494676	1168882	426	Trench	TR004	162	164	2	0.01
Dadjan	RK10793	494678	1168882	426	Trench	TR004	164	166	2	0.01
Dadjan	RK10794	494680	1168883	426	Trench	TR004	166	168	2	0.005
Dadjan	RK10795	494682	1168883	426	Trench	TR004	168	170	2	0.01
Dadjan	RK10796	494684	1168884	426	Trench	TR004	170	172	2	0.01
Dadjan	RK10797	494686	1168884	426	Trench	TR004	172	174	2	0.01
Dadjan	RK10798	494688	1168885	426	Trench	TR004	174	176	2	0.01
Dadjan	RK10799	494689	1168886	426	Trench	TR004	176	178	2	0.005
Dadjan	RK10800	494691	1168886	426	Trench	TR004	178	180	2	0.01
Dadjan	RK10801	494693	1168887	426	Trench	TR004	180	182	2	0.01
Dadjan	RK10802	494695	1168887	426	Trench	TR004	182	184	2	0.005
Dadjan	RK10803	494697	1168888	425	Trench	TR004	184	186	2	0.005
Dadjan	RK10804	494699	1168888	425	Trench	TR004	186	188	2	0.01
Dadjan	RK10805	494701	1168889	424	Trench	TR004	188	190	2	0.01
Dadjan	RK10806	494703	1168889	424	Trench	TR004	190	192	2	0.005
Dadjan	RK10807	494705	1168890	423	Trench	TR004	192	194	2	0.01
Dadjan	RK10808	494707	1168891	423	Trench	TR004	194	196	2	0.01
Dadjan	RK10809	494709	1168891	423	Trench	TR004	196	198	2	0.01
Dadjan	RK10810	494711	1168892	424	Trench	TR004	198	200	2	0.01
Dadjan	RK10811	494713	1168892	424	Trench	TR004	200	202	2	0.01
Dadjan	RK10812	494714	1168893	424	Trench	TR004	202	204	2	0.01
Dadjan	RK10813	494716	1168893	424	Trench	TR004	204	206	2	0.01
Dadjan	RK10814	494718	1168893	424	Trench	TR004	206	208	2	0.04
Dadjan	RK10815	494720	1168893	424	Trench	TR004	208	210	2	0.02
Dadjan	RK10816	494722	1168894	424	Trench	TR004	210	212	2	0.03
Dadjan	RK10817	494724	1168894	424	Trench	TR004	212	214	2	0.05
Dadjan	RK10818	494726	1168894	424	Trench	TR004	214	216	2	0.01
Dadjan	RK10819	494728	1168895	424	Trench	TR004	216	218	2	0.01
Dadjan	RK10820	494730	1168895	424	Trench	TR004	218	220	2	0.02
Dadjan	RK10821	494732	1168895	424	Trench	TR004	220	222	2	0.01
Dadjan	RK10822	494734	1168896	424	Trench	TR004	222	224	2	0.04
Dadjan	RK10823	494736	1168896	423	Trench	TR004	224	226	2	0.05
Dadjan	RK10824	494738	1168897	423	Trench	TR004	226	228	2	0.06
Dadjan	RK10825	494740	1168897	423	Trench	TR004	228	230	2	0.06
Dadjan	RK10826	494742	1168897	423	Trench	TR004	230	232	2	0.02
Dadjan	RK10835	495198	1170770	404	Trench	TR005	0	2	2	0.01
Dadjan	RK10836	495200	1170770	404	Trench	TR005	2	4	2	0.02
Dadjan	RK10837	495202	1170770	404	Trench	TR005	4	6	2	0.02
Dadjan	RK10838	495204	1170770	404	Trench	TR005	6	8	2	0.02
Dadjan	RK10839	495206	1170770	404	Trench	TR005	8	10	2	0.02
Dadjan	RK10840	495208	1170770	404	Trench	TR005	10	12	2	0.03
Dadjan	RK10841	495210	1170770	404	Trench	TR005	12	14	2	0.03
Dadjan	RK10842	495212	1170770	404	Trench	TR005	14	16	2	0.01
Dadjan	RK10843	495214	1170770	404	Trench	TR005	16	18	2	0.01
Dadjan	RK10844	495216	1170770	404	Trench	TR005	18	20	2	0.02
Dadjan	RK10845	495218	1170770	404	Trench	TR005	20	22	2	0.03
Dadjan	RK10846	495220	1170770	405	Trench	TR005	22	24	2	0.02
Dadjan	RK10847	495222	1170770	405	Trench	TR005	24	26	2	0.03
Dadjan	RK10848	495224	1170770	405	Trench	TR005	26	28	2	0.02

For personal use only



PROJECT	Sample ID	Easting	Northing	mRL	Type	Trench ID	From (m)	To (m)	Sample Width (m)	Au (ppm)
Dadjan	RK10849	495226	1170770	405	Trench	TR005	28	30	2	0.03
Dadjan	RK10850	495228	1170770	405	Trench	TR005	30	32	2	0.03
Dadjan	RK10851	495230	1170770	405	Trench	TR005	32	34	2	0.01
Dadjan	RK10852	495232	1170770	405	Trench	TR005	34	36	2	0.02
Dadjan	RK10853	495234	1170770	405	Trench	TR005	36	38	2	0.02
Dadjan	RK10854	495236	1170770	405	Trench	TR005	38	40	2	0.02
Dadjan	RK10855	495238	1170770	406	Trench	TR005	40	42	2	0.04
Dadjan	RK10856	495240	1170770	406	Trench	TR005	42	44	2	0.02
Dadjan	RK10857	495242	1170770	406	Trench	TR005	44	46	2	0.03
Dadjan	RK10858	495244	1170770	406	Trench	TR005	46	48	2	0.01
Dadjan	RK10859	495246	1170770	406	Trench	TR005	48	50	2	0.01
Dadjan	RK10860	495248	1170770	406	Trench	TR005	50	52	2	0.01
Dadjan	RK10861	495250	1170770	406	Trench	TR005	52	54	2	0.01
Dadjan	RK10864	495252	1170770	404	Trench	TR005	54	56	2	0.03
Dadjan	RK10865	495254	1170770	404	Trench	TR005	56	58	2	0.02
Dadjan	RK10866	495256	1170770	404	Trench	TR005	58	60	2	0.03
Dadjan	RK10867	495258	1170770	404	Trench	TR005	60	62	2	0.07
Dadjan	RK10868	495260	1170770	404	Trench	TR005	62	64	2	0.03
Dadjan	RK10869	495262	1170770	404	Trench	TR005	64	66	2	0.05
Dadjan	RK10870	495264	1170770	404	Trench	TR005	66	68	2	0.03
Dadjan	RK10871	495266	1170770	404	Trench	TR005	68	70	2	0.21
Dadjan	RK10872	495268	1170770	404	Trench	TR005	70	72	2	0.07
Dadjan	RK10873	495270	1170770	406	Trench	TR005	72	74	2	0.2
Dadjan	RK10874	495272	1170770	406	Trench	TR005	74	76	2	0.45
Dadjan	RK10875	495274	1170770	406	Trench	TR005	76	78	2	0.15
Dadjan	RK10876	495276	1170770	406	Trench	TR005	78	80	2	0.18
Dadjan	RK10877	495278	1170770	406	Trench	TR005	80	82	2	0.04
Dadjan	RK10878	495280	1170770	406	Trench	TR005	82	84	2	0.04
Dadjan	RK10879	495282	1170770	406	Trench	TR005	84	86	2	0.01
Dadjan	RK10880	495284	1170770	406	Trench	TR005	86	88	2	0.01
Dadjan	RK10881	495286	1170770	406	Trench	TR005	88	90	2	0.01
Dadjan	RK10882	495288	1170770	406	Trench	TR005	90	92	2	0.01
Dadjan	RK10883	495290	1170770	406	Trench	TR005	92	94	2	0.02
Dadjan	RK10884	495292	1170770	406	Trench	TR005	94	96	2	0.18
Dadjan	RK10885	495294	1170770	406	Trench	TR005	96	98	2	0.02
Dadjan	RK10886	495296	1170770	406	Trench	TR005	98	100	2	0.08
Dadjan	RK10887	495298	1170770	406	Trench	TR005	100	102	2	0.05
Dadjan	RK10888	495300	1170770	407	Trench	TR005	102	104	2	0.09
Dadjan	RK10889	495302	1170770	407	Trench	TR005	104	106	2	0.05
Dadjan	RK10890	495304	1170770	407	Trench	TR005	106	108	2	0.02
Dadjan	RK10891	495306	1170770	407	Trench	TR005	108	110	2	0.02
Dadjan	RK10892	495308	1170780	407	Trench	TR005	110	112	2	0.01
Dadjan	RK10893	495310	1170780	407	Trench	TR005	112	114	2	0.01
Dadjan	RK10894	495312	1170780	407	Trench	TR005	114	116	2	0.01
Dadjan	RK10895	495314	1170780	407	Trench	TR005	116	118	2	0.02
Dadjan	RK10896	495316	1170780	407	Trench	TR005	118	120	2	0.05
Dadjan	RK10897	495318	1170780	407	Trench	TR005	120	122	2	0.09
Dadjan	RK10898	495320	1170780	407	Trench	TR005	122	124	2	0.12
Dadjan	RK10899	495322	1170780	407	Trench	TR005	124	126	2	0.04
Dadjan	RK10900	495324	1170780	407	Trench	TR005	126	128	2	0.005
Dadjan	RK10901	495326	1170780	407	Trench	TR005	128	130	2	0.01
Dadjan	RK10902	495328	1170780	407	Trench	TR005	130	132	2	0.01
Dadjan	RK10903	495330	1170780	408	Trench	TR005	132	134	2	0.01
Dadjan	RK10904	495332	1170780	408	Trench	TR005	134	136	2	0.01
Dadjan	RK10905	495334	1170780	408	Trench	TR005	136	138	2	0.01

For personal use only



PROJECT	Sample ID	Easting	Northing	mRL	Type	Trench ID	From (m)	To (m)	Sample Width (m)	Au (ppm)
Dadjan	RK10906	495336	1170780	408	Trench	TR005	138	140	2	0.01
Dadjan	RK10907	495338	1170780	408	Trench	TR005	140	142	2	0.02
Dadjan	RK10908	495340	1170780	408	Trench	TR005	142	144	2	0.01
Dadjan	RK10909	495342	1170780	408	Trench	TR005	144	146	2	0.01
Dadjan	RK10910	495344	1170780	408	Trench	TR005	146	148	2	0.01
Dadjan	RK10911	495346	1170780	408	Trench	TR005	148	150	2	0.05
Dadjan	RK10912	495348	1170780	408	Trench	TR005	150	152	2	0.03
Dadjan	RK10913	495350	1170780	408	Trench	TR005	152	154	2	0.02
Dadjan	RK10914	495352	1170780	408	Trench	TR005	154	156	2	0.01
Dadjan	RK10915	495354	1170780	408	Trench	TR005	156	158	2	0.01
Dadjan	RK10916	495356	1170780	408	Trench	TR005	158	160	2	0.01
Dadjan	RK10917	495358	1170780	408	Trench	TR005	160	162	2	0.01
Dadjan	RK10918	495360	1170780	408	Trench	TR005	162	164	2	0.01
Dadjan	RK10919	495362	1170780	408	Trench	TR005	164	166	2	0.01
Dadjan	RK10920	495364	1170780	408	Trench	TR005	166	168	2	0.01
Dadjan	RK10921	495366	1170780	408	Trench	TR005	168	170	2	0.01
Dadjan	RK10922	495368	1170780	408	Trench	TR005	170	172	2	0.01
Dadjan	RK10923	495370	1170780	408	Trench	TR005	172	174	2	0.02
Dadjan	RK10924	495372	1170780	408	Trench	TR005	174	176	2	0.01
Dadjan	RK10925	495374	1170780	408	Trench	TR005	176	178	2	0.01
Dadjan	RK10926	495376	1170780	408	Trench	TR005	178	180	2	0.02
Dadjan	RK10927	495378	1170780	408	Trench	TR005	180	182	2	0.02
Dadjan	RK10928	495380	1170780	408	Trench	TR005	182	184	2	0.02
Dadjan	RK10929	495382	1170780	408	Trench	TR005	184	186	2	0.02
Dadjan	RK10930	495384	1170780	408	Trench	TR005	186	188	2	0.04
Dadjan	RK10931	495386	1170780	408	Trench	TR005	188	190	2	0.59
Dadjan	RK10932	495388	1170780	408	Trench	TR005	190	192	2	0.2
Dadjan	RK10933	495390	1170780	408	Trench	TR005	192	194	2	0.02
Dadjan	RK10934	495392	1170780	408	Trench	TR005	194	196	2	0.02
Dadjan	RK10935	495394	1170780	408	Trench	TR005	196	198	2	0.02
Dadjan	RK10936	495396	1170780	408	Trench	TR005	198	200	2	0.06
Dadjan	RK10937	495398	1170780	408	Trench	TR005	200	202	2	0.05
Dadjan	RK10938	495400	1170780	408	Trench	TR005	202	204	2	0.13
Dadjan	RK10939	495402	1170780	408	Trench	TR005	204	206	2	1.08
Dadjan	RK10940	495404	1170780	408	Trench	TR005	206	208	2	0.04
Dadjan	RK10941	495406	1170780	411	Trench	TR005	208	210	2	0.02
Dadjan	RK10942	495408	1170780	408	Trench	TR005	210	212	2	0.02
Dadjan	RK10943	495410	1170780	408	Trench	TR005	212	214	2	0.02
Dadjan	RK10944	495412	1170780	408	Trench	TR005	214	216	2	0.3
Dadjan	RK10945	495414	1170780	408	Trench	TR005	216	218	2	0.02
Dadjan	RK10946	495416	1170780	408	Trench	TR005	218	220	2	0.01
Dadjan	RK10947	495418	1170780	408	Trench	TR005	220	222	2	0.02
Dadjan	RK10948	495420	1170780	408	Trench	TR005	222	224	2	0.02
Dadjan	RK10949	495422	1170780	408	Trench	TR005	224	226	2	0.01
Dadjan	RK10950	495424	1170780	408	Trench	TR005	226	228	2	0.01
Dadjan	RK10951	495426	1170780	408	Trench	TR005	228	230	2	0.02
Dadjan	RK10952	495428	1170780	408	Trench	TR005	230	232	2	0.01
Dadjan	RK10953	495430	1170780	408	Trench	TR005	232	234	2	0.01
Dadjan	RK10954	495432	1170780	408	Trench	TR005	234	236	2	0.03
Dadjan	RK10955	495434	1170780	408	Trench	TR005	236	238	2	0.05
Dadjan	RK10956	495436	1170780	408	Trench	TR005	238	240	2	0.02
Dadjan	RK10957	495438	1170780	408	Trench	TR005	240	242	2	0.07
Dadjan	RK10958	495440	1170780	408	Trench	TR005	242	244	2	0.37
Dadjan	RK10959	495442	1170780	408	Trench	TR005	244	246	2	0.01
Dadjan	RK10960	495444	1170780	408	Trench	TR005	246	248	2	0.01

For personal use only



PROJECT	Sample ID	Easting	Northing	mRL	Type	Trench ID	From (m)	To (m)	Sample Width (m)	Au (ppm)
Dadjan	RK10961	495446	1170780	408	Trench	TR005	248	249	1	0.02
Tole	RK30087	504171	1169752	421	Rockchip	n/a	n/a	n/a	n/a	0.02
Tole	RK30088	504172	1169753	419	Rockchip	n/a	n/a	n/a	n/a	0.04
Tole	RK30089	504175	1169756	424	Rockchip	n/a	n/a	n/a	n/a	0.05
Tole	RK30090	504178	1169758	427	Rockchip	n/a	n/a	n/a	n/a	0.04
Tole	RK30091	504251	1169649	454	Rockchip	n/a	n/a	n/a	n/a	0.01
Tole	RK30092	504259	1169654	450	Rockchip	n/a	n/a	n/a	n/a	0.04
Tole	RK30093	504290	1169683	443	Rockchip	n/a	n/a	n/a	n/a	0.03
Tole	RK30094	504053	1169708	443	Rockchip	n/a	n/a	n/a	n/a	0.1
Tole	RK30144	503937	1170045	454	Rockchip	n/a	n/a	n/a	n/a	0.06
Tole	RK30145	504343	1169727	445	Rockchip	n/a	n/a	n/a	n/a	2.01
Tole	RK30146	504343	1169728	445	Rockchip	n/a	n/a	n/a	n/a	0.05
Tole	RK30147	504094	1169715	434	Rockchip	n/a	n/a	n/a	n/a	0.76
Tole	RK30148	504087	1169713	430	Rockchip	n/a	n/a	n/a	n/a	0.38
Tole	RK30149	504083	1169714	419	Rockchip	n/a	n/a	n/a	n/a	13.09
Tole	RK30150	504079	1169713	434	Rockchip	n/a	n/a	n/a	n/a	0.66
Tole	RK30151	504075	1169712	433	Rockchip	n/a	n/a	n/a	n/a	41.35
Tole	RK30152	504083	1169701	433	Rockchip	n/a	n/a	n/a	n/a	0.11
Tole	RK30153	504062	1169714	430	Rockchip	n/a	n/a	n/a	n/a	0.32
Tole	RK30154	504042	1169700	428	Rockchip	n/a	n/a	n/a	n/a	0.42
Tole	RK30155	504049	1169696	439	Rockchip	n/a	n/a	n/a	n/a	0.31
Tole	RK30219	504211	1169784	432	Rockchip	n/a	n/a	n/a	n/a	0.74
Tole	RK30220	506522	1170605	428	Rockchip	n/a	n/a	n/a	n/a	0.04
Tole	RK30095	504250	1169648	456	Rockchip	TTR01	n/a	n/a	n/a	0.01
Tole	RK30177	504163	1169748	436	Trench	TTR002	0	2	2	0.04
Tole	RK30178	504165	1169750	436	Trench	TTR002	2	4	2	0.06
Tole	RK30179	504166	1169751	436	Trench	TTR002	4	6	2	0.08
Tole	RK30180	504168	1169752	436	Trench	TTR002	6	8	2	0.07
Tole	RK30181	504170	1169753	436	Trench	TTR002	8	10	2	0.05
Tole	RK30182	504171	1169754	434	Trench	TTR002	10	12	2	0.06
Tole	RK30183	504173	1169755	434	Trench	TTR002	12	14	2	0.06
Tole	RK30184	504174	1169757	435	Trench	TTR002	14	16	2	0.06
Tole	RK30185	504176	1169758	435	Trench	TTR002	16	18	2	0.09
Tole	RK30186	504178	1169759	435	Trench	TTR002	18	20	2	0.17
Tole	RK30187	504179	1169760	435	Trench	TTR002	20	22	2	0.06
Tole	RK30188	504181	1169761	434	Trench	TTR002	22	24	2	0.07
Tole	RK30189	504182	1169763	434	Trench	TTR002	24	26	2	0.08
Tole	RK30190	504184	1169764	434	Trench	TTR002	26	28	2	0.07
Tole	RK30191	504186	1169765	434	Trench	TTR002	28	30	2	0.11
Tole	RK30192	504187	1169766	433	Trench	TTR002	30	32	2	0.07
Tole	RK30193	504189	1169767	433	Trench	TTR002	32	34	2	0.08
Tole	RK30194	504191	1169769	433	Trench	TTR002	34	36	2	0.06
Tole	RK30195	504192	1169770	433	Trench	TTR002	36	38	2	0.07
Tole	RK30196	504194	1169771	432	Trench	TTR002	38	40	2	0.14
Tole	RK30197	504195	1169772	432	Trench	TTR002	40	42	2	0.09
Tole	RK30198	504197	1169773	432	Trench	TTR002	42	44	2	0.15
Tole	RK30199	504199	1169775	432	Trench	TTR002	44	46	2	0.05
Tole	RK30200	504200	1169776	432	Trench	TTR002	46	48	2	0.09
Tole	RK30201	504202	1169777	432	Trench	TTR002	48	50	2	0.05
Tole	RK30202	504203	1169778	432	Trench	TTR002	50	52	2	0.06
Tole	RK30203	504205	1169779	432	Trench	TTR002	52	54	2	0.11
Tole	RK30204	504207	1169781	433	Trench	TTR002	54	56	2	0.05
Tole	RK30205	504208	1169782	433	Trench	TTR002	56	58	2	1.1
Tole	RK30206	504210	1169783	433	Trench	TTR002	58	60	2	2.66
Tole	RK30207	504211	1169784	432	Trench	TTR002	60	62	2	0.08

For personal use only



PROJECT	Sample ID	Easting	Northing	mRL	Type	Trench ID	From (m)	To (m)	Sample Width (m)	Au (ppm)
Tole	RK30208	504213	1169785	432	Trench	TTR002	62	64	2	0.13
Tole	RK30209	504215	1169786	432	Trench	TTR002	64	66	2	0.31
Tole	RK30210	504216	1169788	432	Trench	TTR002	66	68	2	0.27
Tole	RK30211	504218	1169789	432	Trench	TTR002	68	70	2	0.24
Tole	RK30212	504219	1169790	432	Trench	TTR002	70	72	2	0.6
Tole	RK30213	504221	1169791	431	Trench	TTR002	72	74	2	0.11
Tole	RK30214	504223	1169792	431	Trench	TTR002	74	76	2	0.06
Tole	RK30215	504224	1169794	431	Trench	TTR002	76	78	2	0.08
Tole	RK30216	504226	1169795	431	Trench	TTR002	78	80	2	0.11
Tole	RK30217	504227	1169796	432	Trench	TTR002	80	82	2	0.08
Tole	RK30218	504229	1169797	432	Trench	TTR002	82	84	2	0.09
Tole	RK30096	504253	1169653	352	Trench	TTR01	0	2	2	0.02
Tole	RK30097	504255	1169655	352	Trench	TTR01	2	4	2	0.1
Tole	RK30098	504256	1169656	352	Trench	TTR01	4	6	2	0.03
Tole	RK30099	504258	1169657	352	Trench	TTR01	6	8	2	0.02
Tole	RK30100	504259	1169658	354	Trench	TTR01	8	10	2	0.02
Tole	RK30101	504261	1169660	353	Trench	TTR01	10	12	2	0.06
Tole	RK30102	504262	1169661	353	Trench	TTR01	12	14	2	0.02
Tole	RK30103	504264	1169662	353	Trench	TTR01	14	16	2	0.34
Tole	RK30104	504266	1169663	353	Trench	TTR01	16	18	2	0.06
Tole	RK30105	504267	1169664	352	Trench	TTR01	18	20	2	0.06
Tole	RK30106	504269	1169666	352	Trench	TTR01	20	22	2	0.03
Tole	RK30107	504270	1169667	352	Trench	TTR01	22	24	2	0.02
Tole	RK30108	504272	1169668	352	Trench	TTR01	24	26	2	0.03
Tole	RK30109	504273	1169669	353	Trench	TTR01	26	28	2	0.03
Tole	RK30110	504275	1169671	353	Trench	TTR01	28	30	2	0.05
Tole	RK30111	504277	1169672	353	Trench	TTR01	30	32	2	0.02
Tole	RK30112	504278	1169673	353	Trench	TTR01	32	34	2	0.01
Tole	RK30113	504280	1169674	352	Trench	TTR01	34	36	2	0.03
Tole	RK30114	504281	1169676	352	Trench	TTR01	36	38	2	0.02
Tole	RK30115	504283	1169677	352	Trench	TTR01	38	40	2	0.03
Tole	RK30116	504285	1169678	351	Trench	TTR01	40	42	2	0.08
Tole	RK30117	504286	1169679	351	Trench	TTR01	42	44	2	0.02
Tole	RK30118	504288	1169680	351	Trench	TTR01	44	46	2	0.01
Tole	RK30119	504288	1169681	352	Trench	TTR01	46	48	2	0.05
Tole	RK30120	504345	1169733	444	Trench	TTR01	0	2	2	1.04
Tole	RK30121	504347	1169735	444	Trench	TTR01	2	4	2	0.28
Tole	RK30122	504348	1169736	444	Trench	TTR01	4	6	2	0.09
Tole	RK30123	504350	1169737	444	Trench	TTR01	6	8	2	0.07
Tole	RK30124	504351	1169738	444	Trench	TTR01	8	10	2	0.15
Tole	RK30125	504353	1169740	444	Trench	TTR01	10	12	2	7.45
Tole	RK30126	504355	1169741	444	Trench	TTR01	12	14	2	0.05
Tole	RK30127	504356	1169742	443	Trench	TTR01	14	16	2	0.05
Tole	RK30128	504358	1169743	443	Trench	TTR01	16	18	2	0.05
Tole	RK30129	504359	1169744	443	Trench	TTR01	18	20	2	0.18
Tole	RK30130	504361	1169746	443	Trench	TTR01	20	22	2	0.03
Tole	RK30131	504363	1169747	443	Trench	TTR01	22	24	2	0.07
Tole	RK30132	504364	1169748	442	Trench	TTR01	24	26	2	0.04
Tole	RK30133	504366	1169749	442	Trench	TTR01	26	28	2	0.1
Tole	RK30134	504367	1169750	442	Trench	TTR01	28	30	2	0.04
Tole	RK30135	504369	1169752	442	Trench	TTR01	30	32	2	0.14
Tole	RK30136	504370	1169753	442	Trench	TTR01	32	34	2	0.07
Tole	RK30137	504372	1169754	442	Trench	TTR01	34	36	2	0.04
Tole	RK30138	504374	1169755	443	Trench	TTR01	36	38	2	0.28
Tole	RK30139	504375	1169757	442	Trench	TTR01	38	40	2	0.01

For personal use only



PROJECT	Sample ID	Easting	Northing	mRL	Type	Trench ID	From (m)	To (m)	Sample Width (m)	Au (ppm)
Tole	RK30140	504377	1169758	441	Trench	TTR01	40	42	2	0.04
Tole	RK30141	504378	1169759	442	Trench	TTR01	42	44	2	0.07
Tole	RK30142	504380	1169760	441	Trench	TTR01	44	46	2	0.05
Tole	RK30143	504382	1169761	441	Trench	TTR01	46	48	2	0.1
Tole	RK30156	504401	1169775	432	Trench	TTR01	0	2	2	0.2
Tole	RK30157	504402	1169776	432	Trench	TTR01	2	4	2	0.05
Tole	RK30158	504404	1169777	432	Trench	TTR01	4	6	2	0.25
Tole	RK30159	504405	1169778	432	Trench	TTR01	6	8	2	0.08
Tole	RK30160	504407	1169779	432	Trench	TTR01	8	10	2	0.44
Tole	RK30161	504408	1169781	431	Trench	TTR01	10	12	2	1.28
Tole	RK30162	504410	1169782	431	Trench	TTR01	12	14	2	0.04
Tole	RK30163	504412	1169783	431	Trench	TTR01	14	16	2	0.05
Tole	RK30164	504413	1169784	431	Trench	TTR01	16	18	2	0.04
Tole	RK30165	504415	1169785	431	Trench	TTR01	18	20	2	0.05
Tole	RK30166	504416	1169787	431	Trench	TTR01	20	22	2	0.03
Tole	RK30167	504418	1169788	432	Trench	TTR01	22	24	2	0.05
Tole	RK30168	504420	1169789	432	Trench	TTR01	24	26	2	0.03
Tole	RK30169	504421	1169790	430	Trench	TTR01	26	28	2	0.03
Tole	RK30170	504423	1169792	430	Trench	TTR01	28	30	2	0.03
Tole	RK30171	504424	1169793	430	Trench	TTR01	30	32	2	0.07
Tole	RK30172	504426	1169794	431	Trench	TTR01	32	34	2	0.05
Tole	RK30173	504428	1169795	431	Trench	TTR01	34	36	2	0.02
Tole	RK30174	504429	1169796	431	Trench	TTR01	36	38	2	0.06
Tole	RK30175	504431	1169798	431	Trench	TTR01	38	40	2	0.02
Tole	RK30176	504432	1169799	431	Trench	TTR01	40	42	2	0.02

For personal use only



Table 2. Soil Sample Results

Project	Sample ID	Easting	Northing	mRL	Au ppb
Dadjan	GSS11397	492125	1175710	417	13.46
Dadjan	GSS11398	492175	1175710	417	7.61
Dadjan	GSS11399	492225	1175710	418	4.65
Dadjan	GSS11400	492225	1175710	418	19.46
Dadjan	GSS11401	492275	1175710	418	7.03
Dadjan	GSS11402	492325	1175710	417	6.99
Dadjan	GSS11403	492375	1175710	415	4.15
Dadjan	GSS11404	492425	1175710	414	4.75
Dadjan	GSS11405	492475	1175710	414	4.4
Dadjan	GSS11406	492525	1175710	416	3.59
Dadjan	GSS11407	492575	1175710	418	2.27
Dadjan	GSS11408	492625	1175710	419	14.18
Dadjan	GSS11409	492675	1175710	422	15.73
Dadjan	GSS11410	492725	1175710	424	11.88
Dadjan	GSS11411	492775	1175710	426	8.8
Dadjan	GSS11412	492825	1175710	425	16.32
Dadjan	GSS11413	492875	1175710	425	6.85
Dadjan	GSS11414	492925	1175710	425	6.71
Dadjan	GSS11415	492975	1175710	424	10.17
Dadjan	GSS11416	493025	1175710	421	9.66
Dadjan	GSS11417	493075	1175710	416	7.79
Dadjan	GSS11418	493125	1175710	410	22.51
Dadjan	GSS11419	493175	1175710	406	7.34
Dadjan	GSS11420	493225	1175710	405	8.76
Dadjan	GSS11421	493275	1175711	402	5.56
Dadjan	GSS11422	493325	1175710	399	4.86
Dadjan	GSS11423	493375	1175710	399	51.71
Dadjan	GSS11424	493425	1175710	403	12.66
Dadjan	GSS11425	493425	1175610	398	3.08
Dadjan	GSS11426	493375	1175610	398	5.34
Dadjan	GSS11427	493325	1175610	403	4.12
Dadjan	GSS11428	493275	1175610	406	2.02
Dadjan	GSS11429	493225	1175610	409	17.6
Dadjan	GSS11430	493175	1175610	411	22.04
Dadjan	GSS11431	493125	1175610	415	6.68
Dadjan	GSS11432	493075	1175610	419	8.93
Dadjan	GSS11433	493025	1175610	420	13.32
Dadjan	GSS11434	492975	1175610	425	6.96
Dadjan	GSS11435	492925	1175610	428	9.33
Dadjan	GSS11436	492875	1175610	430	4.63
Dadjan	GSS11437	492825	1175610	431	6.25
Dadjan	GSS11438	492775	1175610	431	33.87
Dadjan	GSS11439	492725	1175610	429	8.74
Dadjan	GSS11440	492675	1175610	424	6.81
Dadjan	GSS11441	492625	1175610	422	20.24
Dadjan	GSS11442	492575	1175610	420	4.78
Dadjan	GSS11443	492525	1175610	424	3.3
Dadjan	GSS11444	492475	1175610	424	1.99
Dadjan	GSS11445	492425	1175610	425	3.44
Dadjan	GSS11446	492375	1175610	427	5.39
Dadjan	GSS11447	492325	1175610	428	3.52
Dadjan	GSS11448	492275	1175610	430	4.21
Dadjan	GSS11449	492225	1175610	430	11.69
Dadjan	GSS11451	492175	1175610	430	4.71

For personal use only



For personal use only

Project	Sample ID	Easting	Northing	mRL	Au ppb
Dadjan	GSS11452	492125	1175610	429	3.4
Dadjan	GSS11453	492075	1175610	429	4.57
Dadjan	GSS11454	492025	1175610	428	8.12
Dadjan	GSS11455	491975	1175609	427	4.94
Dadjan	GSS11456	491925	1175610	426	21.16
Dadjan	GSS11457	491875	1175610	424	4.49
Dadjan	GSS11458	491825	1175610	424	7.71
Dadjan	GSS11459	491775	1175610	422	2.44
Dadjan	GSS11460	491725	1175610	420	30.27
Dadjan	GSS11461	491675	1175610	418	11.63
Dadjan	GSS11462	491625	1175610	417	9.78
Dadjan	GSS11463	491575	1175610	415	8.22
Dadjan	GSS11464	491525	1175610	413	220.31
Dadjan	GSS11465	491475	1175610	412	7.62
Dadjan	GSS11466	491425	1175610	410	14.53
Dadjan	GSS11467	491375	1175610	404	3.89
Dadjan	GSS11468	491325	1175610	405	7.74
Dadjan	GSS11469	491275	1175610	407	11.62
Dadjan	GSS11470	491225	1175610	409	4.67
Dadjan	GSS11471	491175	1175610	414	5.14
Dadjan	GSS11472	491125	1175610	416	8.97
Dadjan	GSS11473	491075	1175610	417	7.98
Dadjan	GSS11474	491075	1175510	412	7.23
Dadjan	GSS11475	491125	1175510	411	12.18
Dadjan	GSS11476	491175	1175510	408	14.14
Dadjan	GSS11477	491225	1175510	407	8.33
Dadjan	GSS11478	491275	1175510	404	8.47
Dadjan	GSS11479	491325	1175510	403	9.53
Dadjan	GSS11480	491375	1175510	404	8.04
Dadjan	GSS11481	491425	1175510	409	3.25
Dadjan	GSS11482	491475	1175510	411	3.77
Dadjan	GSS11483	491525	1175510	413	3.47
Dadjan	GSS11484	491575	1175510	415	4.55
Dadjan	GSS11485	491625	1175510	418	5.33
Dadjan	GSS11486	491675	1175510	418	5.2
Dadjan	GSS11487	491725	1175510	420	61.52
Dadjan	GSS11488	491775	1175510	421	5
Dadjan	GSS11489	491825	1175510	423	6.96
Dadjan	GSS11490	491876	1175510	424	5.88
Dadjan	GSS11491	491925	1175510	425	4.75
Dadjan	GSS11492	491975	1175510	428	3.87
Dadjan	GSS11493	492025	1175510	431	2.98
Dadjan	GSS11494	492075	1175510	433	13.93
Dadjan	GSS11495	492125	1175510	434	3.63
Dadjan	GSS11496	492175	1175510	435	5.6
Dadjan	GSS11497	492225	1175510	435	3.57
Dadjan	GSS11498	492275	1175510	435	5.17
Dadjan	GSS11499	492325	1175510	436	3.68
Dadjan	GSS11501	492375	1175510	433	6.35
Dadjan	GSS11502	492425	1175510	431	4.26
Dadjan	GSS11503	492475	1175510	430	3.54
Dadjan	GSS11504	492525	1175510	432	4.64
Dadjan	GSS11505	492575	1175510	437	42.22
Dadjan	GSS11506	492625	1175510	439	3.91
Dadjan	GSS11507	492675	1175510	443	10.41
Dadjan	GSS11508	492725	1175510	446	4.37



For personal use only

Project	Sample ID	Easting	Northing	mRL	Au ppb
Dadjan	GSS11509	492775	1175510	447	4.25
Dadjan	GSS11510	492825	1175510	446	9.72
Dadjan	GSS11511	492875	1175510	444	4.12
Dadjan	GSS11512	492925	1175510	442	4.51
Dadjan	GSS11513	492975	1175510	432	7.47
Dadjan	GSS11514	493025	1175510	424	4.58
Dadjan	GSS11515	493075	1175510	419	4.45
Dadjan	GSS11516	493125	1175510	416	31.11
Dadjan	GSS11517	493175	1175510	414	275.28
Dadjan	GSS11518	493225	1175510	412	4.38
Dadjan	GSS11519	493275	1175510	409	6.1
Dadjan	GSS11520	493325	1175510	406	52.14
Dadjan	GSS11521	493375	1175510	400	5.59
Dadjan	GSS11522	493425	1175510	397	3.48
Dadjan	GSS11523	493425	1175410	399	4.07
Dadjan	GSS11524	493375	1175409	402	8.74
Dadjan	GSS11525	493325	1175410	404	6.2
Dadjan	GSS11526	493275	1175410	405	7.24
Dadjan	GSS11527	493225	1175410	407	8.86
Dadjan	GSS11528	493175	1175410	409	3.38
Dadjan	GSS11529	493125	1175410	414	7.01
Dadjan	GSS11530	493075	1175410	418	4.65
Dadjan	GSS11531	493025	1175410	423	2.93
Dadjan	GSS11532	492975	1175410	430	4.72
Dadjan	GSS11533	492925	1175410	439	3.77
Dadjan	GSS11534	492875	1175410	440	2.92
Dadjan	GSS11535	492825	1175410	444	3.13
Dadjan	GSS11536	492775	1175410	450	5.01
Dadjan	GSS11537	492725	1175410	450	4.26
Dadjan	GSS11538	492675	1175410	448	3.39
Dadjan	GSS11539	492625	1175410	441	10.11
Dadjan	GSS11540	492575	1175410	438	3.01
Dadjan	GSS11541	492525	1175410	435	6.17
Dadjan	GSS11542	492475	1175410	436	16.12
Dadjan	GSS11543	492425	1175410	439	5.78
Dadjan	GSS11544	492375	1175410	446	4.06
Dadjan	GSS11545	492325	1175410	449	4.74
Dadjan	GSS11546	492275	1175410	445	5.7
Dadjan	GSS11547	492225	1175410	438	4.03
Dadjan	GSS11548	492175	1175410	434	4.94
Dadjan	GSS11549	492125	1175410	431	3.89
Dadjan	GSS11551	492075	1175410	430	4.07
Dadjan	GSS11552	492025	1175410	430	4.62
Dadjan	GSS11553	491975	1175410	429	6.68
Dadjan	GSS11554	491925	1175410	428	4.93
Dadjan	GSS11555	491875	1175410	426	3.19
Dadjan	GSS11556	491825	1175410	425	3.44
Dadjan	GSS11557	491775	1175410	425	6.39
Dadjan	GSS11558	491725	1175410	424	13.67
Dadjan	GSS11559	491675	1175410	422	5.73
Dadjan	GSS11560	491625	1175410	420	4.71
Dadjan	GSS11561	491575	1175410	419	5.46
Dadjan	GSS11562	491525	1175410	416	8.65
Dadjan	GSS11563	491475	1175410	415	5.38
Dadjan	GSS11564	491425	1175410	414	5.92
Dadjan	GSS11565	491375	1175410	412	3.75



For personal use only

Project	Sample ID	Easting	Northing	mRL	Au ppb
Dadjan	GSS11566	491325	1175410	410	7.16
Dadjan	GSS11567	491275	1175410	411	5.11
Dadjan	GSS11568	491225	1175410	412	25.61
Dadjan	GSS11569	491175	1175410	413	3.08
Dadjan	GSS11570	491125	1175410	414	6.07
Dadjan	GSS11571	491075	1175410	412	5.73
Dadjan	GSS11572	493425	1175310	502	9.05
Dadjan	GSS11573	493375	1175310	493	6.29
Dadjan	GSS11574	493325	1175310	489	12.1
Dadjan	GSS11575	493275	1175310	477	8.06
Dadjan	GSS11576	493225	1175310	476	7.34
Dadjan	GSS11577	493175	1175310	474	4.98
Dadjan	GSS11578	493125	1175310	468	4.81
Dadjan	GSS11579	493075	1175310	465	5.69
Dadjan	GSS11580	493025	1175310	467	6.97
Dadjan	GSS11581	492975	1175310	468	12.51
Dadjan	GSS11582	492925	1175310	468	4.12
Dadjan	GSS11583	492875	1175310	465	5.48
Dadjan	GSS11584	492826	1175316	464	4.63
Dadjan	GSS11585	492775	1175310	466	3.92
Dadjan	GSS11586	492725	1175310	464	4.76
Dadjan	GSS11587	492675	1175310	459	5.8
Dadjan	GSS11588	492625	1175310	454	4.56
Dadjan	GSS11589	492575	1175310	451	4.55
Dadjan	GSS11590	492525	1175310	445	4.15
Dadjan	GSS11591	492475	1175310	449	10.08
Dadjan	GSS11592	492425	1175310	456	6.55
Dadjan	GSS11593	492375	1175310	464	5.36
Dadjan	GSS11594	492325	1175310	458	22.03
Dadjan	GSS11595	492275	1175310	446	4.47
Dadjan	GSS11596	492225	1175310	440	4.48
Dadjan	GSS11597	492175	1175310	436	3.03
Dadjan	GSS11598	492125	1175310	433	67.54
Dadjan	GSS11599	492075	1175310	432	5.06
Dadjan	GSS11601	492025	1175310	431	2.79
Dadjan	GSS11602	491975	1175310	429	3.86
Dadjan	GSS11603	491925	1175310	428	9.74
Dadjan	GSS11604	491875	1175310	427	2.84
Dadjan	GSS11605	491825	1175310	425	3.54
Dadjan	GSS11606	491775	1175310	424	16.79
Dadjan	GSS11607	491725	1175310	422	7.72
Dadjan	GSS11608	491675	1175310	428	6.44
Dadjan	GSS11609	491625	1175310	426	4.33
Dadjan	GSS11610	491575	1175310	424	7.56
Dadjan	GSS11611	491525	1175310	422	3.08
Dadjan	GSS11612	491475	1175310	420	3.89
Dadjan	GSS11613	491425	1175310	417	3.29
Dadjan	GSS11614	491375	1175310	414	5.07
Dadjan	GSS11615	491325	1175310	414	9.47
Dadjan	GSS11616	491275	1175310	414	4.75
Dadjan	GSS11617	491225	1175310	414	2.64
Dadjan	GSS11618	491175	1175310	416	3.11
Dadjan	GSS11619	491125	1175310	418	2.99
Dadjan	GSS11620	491075	1175310	420	3.26
Dadjan	GSS11621	491075	1175210	420	1.92
Dadjan	GSS11622	491125	1175210	418	8.82



For personal use only

Project	Sample ID	Easting	Northing	mRL	Au ppb
Dadjan	GSS11623	491175	1175210	417	1.99
Dadjan	GSS11624	491225	1175210	416	32.61
Dadjan	GSS11625	491275	1175210	416	4.04
Dadjan	GSS11626	491325	1175210	417	4.26
Dadjan	GSS11627	491375	1175210	417	1.32
Dadjan	GSS11628	491425	1175210	418	1.83
Dadjan	GSS11629	491475	1175210	420	3.83
Dadjan	GSS11630	491525	1175210	421	3.76
Dadjan	GSS11631	491575	1175210	423	4.13
Dadjan	GSS11632	491625	1175210	425	5.03
Dadjan	GSS11633	491675	1175210	424	5.09
Dadjan	GSS11634	491725	1175210	425	4.73
Dadjan	GSS11635	491775	1175210	424	3.86
Dadjan	GSS11636	491825	1175210	426	22.41
Dadjan	GSS11637	491875	1175210	426	82.41
Dadjan	GSS11638	491925	1175210	427	3.81
Dadjan	GSS11639	491975	1175210	428	8.87
Dadjan	GSS11640	492025	1175210	431	7.6
Dadjan	GSS11641	492075	1175210	432	7.16
Dadjan	GSS11642	492125	1175210	432	5.67
Dadjan	GSS11643	492175	1175210	428	7.59
Dadjan	GSS11644	492225	1175210	430	5.89
Dadjan	GSS11645	492275	1175210	433	5.53
Dadjan	GSS11646	492325	1175210	437	9.81
Dadjan	GSS11647	492375	1175210	440	5.46
Dadjan	GSS11648	492425	1175210	438	7.45
Dadjan	GSS11649	492475	1175210	430	2.66
Dadjan	GSS11651	492525	1175210	423	3.99
Dadjan	GSS11652	492575	1175210	420	4.19
Dadjan	GSS11653	492625	1175210	426	8.45
Dadjan	GSS11654	492675	1175210	425	4.56
Dadjan	GSS11655	492725	1175210	426	5.8
Dadjan	GSS11656	492775	1175210	425	10.17
Dadjan	GSS11657	492825	1175210	424	3.63
Dadjan	GSS11658	492875	1175210	423	4.38
Dadjan	GSS11659	492925	1175210	423	6.56
Dadjan	GSS11660	492975	1175210	422	9.18
Dadjan	GSS11661	493024	1175210	420	6.01
Dadjan	GSS11662	493075	1175210	416	6.91
Dadjan	GSS11663	493125	1175210	412	11.13
Dadjan	GSS11664	493175	1175210	410	6.24
Dadjan	GSS11665	493225	1175210	408	6.63
Dadjan	GSS11666	493275	1175210	406	10.36
Dadjan	GSS11667	493325	1175210	404	10.02
Dadjan	GSS11668	493375	1175210	401	4.42
Dadjan	GSS11669	493425	1175210	397	6.11
Dadjan	GSS11670	493425	1175110	394	5.99
Dadjan	GSS11671	493375	1175110	397	4.98
Dadjan	GSS11672	493325	1175110	400	5.62
Dadjan	GSS11673	493275	1175110	401	3.28
Dadjan	GSS11674	493225	1175110	403	11.92
Dadjan	GSS11675	493175	1175110	405	9.17
Dadjan	GSS11676	493125	1175110	406	18.47
Dadjan	GSS11677	493075	1175110	407	4.24
Dadjan	GSS11678	493025	1175110	408	2.32
Dadjan	GSS11679	492975	1175110	410	2.66



For personal use only

Project	Sample ID	Easting	Northing	mRL	Au ppb
Dadjan	GSS11680	492925	1175110	411	1.65
Dadjan	GSS11681	492875	1175110	412	1.75
Dadjan	GSS11682	492825	1175110	391	1.12
Dadjan	GSS11683	492775	1175110	393	2.12
Dadjan	GSS11684	492725	1175110	396	2.98
Dadjan	GSS11685	492675	1175110	399	3.75
Dadjan	GSS11686	492625	1175110	401	4.45
Dadjan	GSS11687	492575	1175110	404	1.79
Dadjan	GSS11688	492525	1175110	406	1.87
Dadjan	GSS11689	492483	1175107	409	3.36
Dadjan	GSS11690	492425	1175110	413	5.89
Dadjan	GSS11691	492370	1175104	416	3.82
Dadjan	GSS11692	492325	1175110	418	7.12
Dadjan	GSS11693	492275	1175110	419	3.73
Dadjan	GSS11694	492225	1175110	419	5.04
Dadjan	GSS11695	492175	1175110	420	17.35
Dadjan	GSS11696	492118	1175108	423	8.71
Dadjan	GSS11697	492077	1175107	423	16.08
Dadjan	GSS11698	492019	1175113	421	15.75
Dadjan	GSS11699	491975	1175110	419	4.86
Dadjan	GSS11701	491925	1175110	419	15.88
Dadjan	GSS11702	491866	1175110	418	6.21
Dadjan	GSS11703	491825	1175110	418	7.92
Dadjan	GSS11704	491775	1175110	418	1.25
Dadjan	GSS11705	491725	1175110	418	3.44
Dadjan	GSS11706	491675	1175110	419	6.32
Dadjan	GSS11707	491625	1175110	421	10.56
Dadjan	GSS11708	491575	1175110	420	6.53
Dadjan	GSS11709	491525	1175110	418	4.48
Dadjan	GSS11710	491475	1175110	418	8.82
Dadjan	GSS11711	491425	1175110	419	3.02
Dadjan	GSS11712	491375	1175110	417	3.1
Dadjan	GSS11713	491325	1175110	415	2.49
Dadjan	GSS11714	491275	1175110	415	1.73
Dadjan	GSS11715	491225	1175110	414	2.22
Dadjan	GSS11716	491175	1175110	415	29.74
Dadjan	GSS11717	491125	1175110	417	1.34
Dadjan	GSS11718	491075	1175110	419	2.52
Dadjan	GSS11719	493425	1175010	386	7.4
Dadjan	GSS11720	493375	1175010	388	8.62
Dadjan	GSS11721	493325	1175010	393	4.43
Dadjan	GSS11722	493275	1175010	395	4.45
Dadjan	GSS11723	493225	1175010	397	3.45
Dadjan	GSS11724	493175	1175010	400	2.5
Dadjan	GSS11725	493125	1175010	402	15.16
Dadjan	GSS11726	493075	1175010	403	1.48
Dadjan	GSS11727	493025	1175010	405	303.52
Dadjan	GSS11728	492975	1175010	407	2.33
Dadjan	GSS11729	492925	1175010	407	1.84
Dadjan	GSS11730	492875	1175010	408	3.79
Dadjan	GSS11731	492825	1175010	407	1.38
Dadjan	GSS11732	492775	1175010	408	2.68
Dadjan	GSS11733	492725	1175010	409	1.29
Dadjan	GSS11734	492675	1175010	410	1.6
Dadjan	GSS11735	492625	1175010	412	2.15
Dadjan	GSS11736	492575	1175010	413	1.44



For personal use only

Project	Sample ID	Easting	Northing	mRL	Au ppb
Dadjan	GSS11737	492525	1175010	414	2.09
Dadjan	GSS11738	492475	1175010	416	7.41
Dadjan	GSS11739	492425	1175010	418	45.91
Dadjan	GSS11740	492374	1175010	419	3.06
Dadjan	GSS11741	492325	1175010	421	7.17
Dadjan	GSS11742	492275	1175010	421	5.39
Dadjan	GSS11743	492225	1175010	423	12.02
Dadjan	GSS11744	492172	1175007	424	6.08
Dadjan	GSS11745	492115	1175006	423	14.2
Dadjan	GSS11746	492075	1175010	424	11.79
Dadjan	GSS11747	492021	1175015	423	29.66
Dadjan	GSS11748	491974	1175010	423	13.3
Dadjan	GSS11749	491925	1175010	423	17.82
Dadjan	GSS11751	491875	1175010	423	10.98
Dadjan	GSS11752	491825	1175010	423	2.61
Dadjan	GSS11753	491775	1175010	424	4.33
Dadjan	GSS11754	491725	1175010	424	4.23
Dadjan	GSS11755	491675	1175010	421	4.43
Dadjan	GSS11756	491625	1175010	421	2.72
Dadjan	GSS11757	491575	1175010	420	2.93
Dadjan	GSS11758	491525	1175010	420	2.56
Dadjan	GSS11759	491475	1175010	420	2.81
Dadjan	GSS11760	491425	1175010	420	6.67
Dadjan	GSS11761	491375	1175010	419	4.66
Dadjan	GSS11762	491325	1175010	418	10.62
Dadjan	GSS11763	491275	1175012	416	4.19
Dadjan	GSS11764	491225	1175010	415	3.13
Dadjan	GSS11765	491175	1175010	415	2.52
Dadjan	GSS11766	491125	1175010	416	2.55
Dadjan	GSS11767	491075	1175010	418	9.6
Dadjan	SS10914	494000	1168410	423	3.73
Dadjan	SS10915	494000	1168310	426	8.83
Dadjan	SS10916	494100	1168310	422	6.59
Dadjan	SS10917	494200	1168310	414	5.02
Dadjan	SS10918	494200	1168210	410	7.03
Dadjan	SS10919	494100	1168210	419	3.06
Dadjan	SS10920	494000	1168210	426	5.96
Dadjan	SS10921	494000	1168110	419	5.02
Dadjan	SS10922	494100	1168110	420	39.59
Dadjan	SS10923	494200	1168110	415	4.84
Dadjan	SS10924	494299	1168111	415	9.79
Dadjan	SS10925	494400	1168111	420	4.68
Dadjan	SS10926	494500	1168110	426	5.48
Dadjan	SS10927	494600	1168110	429	4.6
Dadjan	SS10928	494600	1168010	432	0.29
Dadjan	SS10929	494500	1168010	426	5.15
Dadjan	SS10930	494400	1168010	415	7.22
Dadjan	SS10931	494300	1168010	410	87.38
Dadjan	SS10932	494200	1168010	409	4.23
Dadjan	SS10933	494100	1168010	409	9.37
Dadjan	SS10934	494000	1168010	418	8.42
Dadjan	SS10935	493900	1168010	417	52.43
Dadjan	SS10936	493802	1168010	427	28.2
Dadjan	SS10937	493700	1168010	403	29.89
Dadjan	SS10938	493600	1168010	400	12.72
Dadjan	SS10939	493500	1168010	399	4.77



For personal use only

Project	Sample ID	Easting	Northing	mRL	Au ppb
Dadjan	SS10940	493400	1168010	400	3.82
Dadjan	SS10941	493300	1168009	404	3.58
Dadjan	SS10942	493200	1168010	415	4.21
Dadjan	SS10943	493100	1168010	408	6.28
Dadjan	SS10944	493000	1168010	413	4.03
Dadjan	SS10945	493101	1168106	416	8.74
Dadjan	SS10946	493200	1168110	415	5.34
Dadjan	SS10947	493299	1168110	422	5.92
Dadjan	SS10948	493400	1168110	431	5.03
Dadjan	SS10949	493501	1168110	418	4.26
Dadjan	SS10951	493600	1168110	413	3.19
Dadjan	SS10952	493700	1168110	418	17.7
Dadjan	SS10953	493700	1168210	416	3990
Dadjan	SS10954	493600	1168210	413	12.17
Dadjan	SS10955	493500	1168210	423	5.91
Dadjan	SS10956	493400	1168210	416	11.23
Dadjan	SS10957	493300	1168210	408	8.43
Dadjan	SS10958	493200	1168210	406	5.79
Dadjan	SS10959	493200	1168310	411	4.35
Dadjan	SS10960	493300	1168311	417	4.87
Dadjan	SS10961	494500	1167910	415	5.02
Dadjan	SS10962	493500	1168309	425	5.31
Dadjan	SS10963	493600	1168310	411	5.17
Dadjan	SS10964	493700	1168310	408	14.87
Dadjan	SS10965	493700	1168410	414	7.09
Dadjan	SS10966	493598	1168409	423	3.23
Dadjan	SS10967	493500	1168410	424	7.78
Dadjan	SS10968	493400	1168410	425	6.99
Dadjan	SS10969	493300	1168409	421	30.41
Dadjan	SS10970	493301	1168510	419	5.53
Dadjan	SS10971	493400	1168510	420	5.44
Dadjan	SS10972	493500	1168510	422	12.86
Dadjan	SS10973	493600	1168512	422	4.64
Dadjan	SS10974	493701	1168510	424	4.35
Dadjan	SS10975	493700	1168610	423	9.19
Dadjan	SS10976	493600	1168610	420	4.53
Dadjan	SS10977	493500	1168610	417	2.6
Dadjan	SS10978	493400	1168610	416	4.18
Dadjan	SS10979	494300	1167910	405	6.54
Dadjan	SS10980	494400	1167910	412	5.4
Dadjan	SS10981	494500	1167910	415	3.15
Dadjan	SS10982	494600	1167910	420	2.25
Dadjan	SS10983	494200	1167910	405	7.32
Dadjan	SS10984	494100	1167910	402	7.03
Dadjan	SS10985	493999	1167910	399	7.91
Dadjan	SS10986	493900	1167910	396	6.57
Dadjan	SS10987	493100	1167911	396	11.61
Dadjan	SS10988	493000	1167910	397	4.64
Dadjan	SS10989	493098	1167716	394	10.07
Dadjan	SS10990	493199	1167708	393	7.34
Dadjan	SS10991	493301	1167710	396	7.71
Dadjan	SS10992	493400	1167711	395	6.54
Dadjan	SS10993	493500	1167710	398	2.86
Dadjan	SS10994	493600	1167710	398	5.18
Dadjan	SS10995	493700	1167710	400	5.09
Dadjan	SS10996	493900	1167610	401	4.38



For personal use only

Project	Sample ID	Easting	Northing	mRL	Au ppb
Dadjan	SS10997	493800	1167610	402	6.6
Dadjan	SS10998	493700	1167610	402	7.13
Dadjan	SS10999	493598	1167609	401	4.39
Dadjan	SS11001	493500	1167610	401	5.34
Dadjan	SS11002	493400	1167610	401	8.38
Dadjan	SS11003	493300	1167610	398	8.05
Dadjan	SS11004	493200	1167610	399	6.16
Dadjan	SS11005	493098	1167604	394	3.45
Dadjan	SS11006	493000	1167610	400	3.49
Dadjan	SS11007	493000	1167510	398	7.3
Dadjan	SS11008	493099	1167510	398	11.67
Dadjan	SS11009	493200	1167510	399	13.67
Dadjan	SS11010	493300	1167511	402	12.49
Dadjan	SS11011	493400	1167510	405	6.9
Dadjan	SS11012	493500	1167510	420	10.37
Dadjan	SS11013	493600	1167510	426	15.75
Dadjan	SS11014	493700	1167509	411	11.79
Dadjan	SS11015	493800	1167510	408	3.4
Dadjan	SS11016	493900	1167510	404	3.18
Dadjan	SS11017	494001	1167510	402	3.74
Dadjan	SS11018	494200	1167609	396	2.38
Dadjan	SS11019	494300	1167610	402	8.14
Dadjan	SS11020	494401	1167611	401	4.28
Dadjan	SS11021	494500	1167710	410	5.43
Dadjan	SS11022	494400	1167710	405	4.94
Dadjan	SS11023	494300	1167710	401	3.52
Dadjan	SS11024	494200	1167711	396	4.58
Dadjan	SS11025	494100	1167710	393	7.74
Dadjan	SS11026	494101	1167809	393	9.27
Dadjan	SS11027	494200	1167810	399	3.14
Dadjan	SS11028	494300	1167809	403	4.48
Dadjan	SS11029	494400	1167810	410	4.46
Dadjan	SS11030	494500	1167810	419	8.23
Dadjan	SS11031	494299	1169339	414	5.29
Dadjan	SS11032	494250	1169339	414	13.94
Dadjan	SS11033	494200	1169344	413	15.07
Dadjan	SS11034	494152	1169341	409	11.27
Dadjan	SS11035	494098	1169340	410	8.67
Dadjan	SS11036	494051	1169340	409	4.67
Dadjan	SS11037	494000	1169340	408	7.08
Dadjan	SS11038	493950	1169340	409	7.09
Dadjan	SS11039	493900	1169340	408	6.66
Dadjan	SS11040	493900	1169391	407	6.67
Dadjan	SS11041	493950	1169390	407	5.43
Dadjan	SS11042	494000	1169390	408	6.65
Dadjan	SS11043	494050	1169390	407	9.75
Dadjan	SS11044	494103	1169388	410	11.2
Dadjan	SS11045	494300	1169290	415	16.23
Dadjan	SS11046	494250	1169290	412	10.29
Dadjan	SS11047	494200	1169289	412	10.6
Dadjan	SS11048	494150	1169290	411	17.89
Dadjan	SS11049	494099	1169290	409	6.27
Dadjan	SS11051	494049	1169290	407	7.19
Dadjan	SS11052	494000	1169290	407	6.75
Dadjan	SS11053	493950	1169290	405	5.06
Dadjan	SS11054	493900	1169290	404	6.2



For personal use only

Project	Sample ID	Easting	Northing	mRL	Au ppb
Dadjan	SS11055	493900	1169239	407	5.86
Dadjan	SS11056	493953	1169239	409	13.04
Dadjan	SS11057	494000	1169240	412	12.97
Dadjan	SS11058	494051	1169240	410	10.39
Dadjan	SS11059	494100	1169240	412	11.94
Dadjan	SS11060	494153	1169241	416	10.88
Dadjan	SS11061	494196	1169236	415	32.71
Dadjan	SS11062	494255	1169220	412	8.43
Dadjan	SS11063	494300	1169240	415	119.42
Dadjan	SS11064	494307	1169194	419	32.36
Dadjan	SS11065	494250	1169190	414	12.78
Dadjan	SS11066	494199	1169190	417	8.52
Dadjan	SS11067	494150	1169189	417	7.28
Dadjan	SS11068	494098	1169187	411	5.71
Dadjan	SS11069	494050	1169190	414	8.21
Dadjan	SS11070	494000	1169190	413	27.53
Dadjan	SS11071	493950	1169190	413	5.58
Dadjan	SS11072	493900	1169190	414	5.23
Dadjan	SS11073	493900	1169140	418	5.1
Dadjan	SS11074	493949	1169140	420	7.42
Dadjan	SS11075	494001	1169140	422	7.77
Dadjan	SS11076	494049	1169140	421	10.61
Dadjan	SS11077	494100	1169140	417	15.37
Dadjan	SS11078	494150	1169140	422	9.52
Dadjan	SS11079	494200	1169141	425	7.54
Dadjan	SS11080	494250	1169141	420	7.27
Dadjan	SS11081	494300	1169140	419	15.12
Dadjan	SS11082	494300	1169090	421	13.58
Dadjan	SS11083	494250	1169090	425	10.15
Dadjan	SS11084	494197	1169090	423	10.92
Dadjan	SS11085	494150	1169091	418	8.63
Dadjan	SS11086	494100	1169090	418	14.82
Dadjan	SS11087	494050	1169090	420	7.25
Dadjan	SS11088	494000	1169090	422	2.89
Dadjan	SS11089	493950	1169090	420	4.16
Dadjan	SS11090	493900	1169089	420	2.98
Dadjan	SS11091	493900	1169040	421	7.83
Dadjan	SS11092	493950	1169040	423	4.97
Dadjan	SS11093	494000	1169040	425	5.59
Dadjan	SS11094	494050	1169040	424	6.36
Dadjan	SS11095	494100	1169040	422	5.56
Dadjan	SS11096	494150	1169040	426	11.07
Dadjan	SS11097	494200	1169040	426	10.71
Dadjan	SS11098	494250	1169040	435	15.27
Dadjan	SS11099	494301	1169040	436	13.04
Dadjan	SS11101	494300	1168990	433	16.43
Dadjan	SS11102	494249	1168990	429	8.11
Dadjan	SS11103	494200	1168989	426	7.27
Dadjan	SS11104	494150	1168990	429	9.72
Dadjan	SS11105	494099	1168990	429	7.19
Dadjan	SS11106	494050	1168990	428	6.04
Dadjan	SS11107	494000	1168990	431	6.48
Dadjan	SS11108	493950	1168990	431	7.65
Dadjan	SS11109	493900	1168991	429	6.59
Dadjan	SS11110	493900	1168940	431	8.02
Dadjan	SS11111	493950	1168940	433	7.08



For personal use only

Project	Sample ID	Easting	Northing	mRL	Au ppb
Dadjan	SS11112	494000	1168940	434	6.78
Dadjan	SS11113	494050	1168940	431	15.58
Dadjan	SS11114	494100	1168940	432	14.05
Dadjan	SS11115	494151	1168940	432	7.27
Dadjan	SS11116	494200	1168940	429	16.75
Dadjan	SS11117	494251	1168939	429	13.08
Dadjan	SS11118	494300	1168940	429	12.7
Dadjan	SS11119	494100	1168889	433	9.05
Dadjan	SS11120	494051	1168888	435	9.04
Dadjan	SS11121	494000	1168890	432	8.16
Dadjan	SS11122	493950	1168890	431	6.66
Dadjan	SS11123	493899	1168890	432	6.13
Dadjan	SS11124	494150	1168890	433	5.07
Dadjan	SS11125	494300	1168790	427	12.21
Dadjan	SS11126	494244	1168793	429	14.16
Dadjan	SS11127	494200	1168790	430	12.17
Dadjan	SS11128	494150	1168790	433	11.86
Dadjan	SS11129	494100	1168790	433	7.46
Dadjan	SS11130	494053	1168786	436	6.67
Dadjan	SS11131	494000	1168790	438	6.49
Dadjan	SS11132	493950	1168790	436	4.74
Dadjan	SS11133	493900	1168790	432	3.99
Dadjan	SS11134	493900	1168840	434	5.6
Dadjan	SS11135	493950	1168840	436	8.44
Dadjan	SS11136	494000	1168840	436	3.83
Dadjan	SS11137	494050	1168840	437	10.08
Dadjan	SS11138	494100	1168840	435	85.73
Dadjan	SS11139	494150	1168840	433	12.62
Dadjan	SS11140	494200	1168840	432	6.84
Dadjan	SS11141	494250	1168840	430	25.92
Dadjan	SS11142	494300	1168840	429	81.35
Dadjan	SS11143	494300	1168890	430	5.72
Dadjan	SS11144	494256	1168884	430	6.73
Dadjan	SS11145	494200	1168890	431	15.03
Tole	SS32175	505328	1172112	417	3.08
Tole	SS32176	505278	1172111	419	9.11
Tole	SS32177	505228	1172112	419	4.27
Tole	SS32178	505178	1172112	420	2.78
Tole	SS32179	505128	1172112	422	3.08
Tole	SS32180	505078	1172112	424	3.21
Tole	SS32181	505028	1172112	425	4.07
Tole	SS32182	504978	1172112	428	3.3
Tole	SS32183	504928	1172112	433	2.86
Tole	SS32184	504878	1172112	434	101.6
Tole	SS32185	504829	1172112	436	3.42
Tole	SS32186	504778	1172112	436	3.87
Tole	SS32187	504728	1172112	437	4.32
Tole	SS32188	504678	1172112	439	2.71
Tole	SS32189	504628	1172112	434	3.54
Tole	SS32190	504628	1172212	444	4.79
Tole	SS32191	504678	1172212	441	4.04
Tole	SS32192	504728	1172212	440	3.66
Tole	SS32193	504778	1172212	440	3.98
Tole	SS32194	504828	1172212	435	3.78
Tole	SS32195	504878	1172212	437	21.71
Tole	SS32196	504928	1172212	433	10.03



For personal use only

Project	Sample ID	Easting	Northing	mRL	Au ppb
Tole	SS32197	504978	1172212	432	3.62
Tole	SS32198	505028	1172212	429	6.94
Tole	SS32199	505078	1172212	427	3.8
Tole	SS32200	505128	1172212	425	5.2
Tole	SS32202	505178	1172212	425	2.56
Tole	SS32203	505228	1172212	425	3.96
Tole	SS32204	505278	1172212	420	7.54
Tole	SS32205	505228	1172411	414	5.46
Tole	SS32206	505178	1172411	419	2.72
Tole	SS32207	505128	1172411	422	5.14
Tole	SS32208	505077	1172412	425	394.76
Tole	SS32209	505027	1172411	423	1.89
Tole	SS32210	504977	1172411	424	4.28
Tole	SS32211	504927	1172412	429	6.07
Tole	SS32212	504877	1172412	431	5.32
Tole	SS32213	504828	1172412	431	4.11
Tole	SS32214	504777	1172412	432	3.04
Tole	SS32215	504728	1172412	436	4.11
Tole	SS32216	504678	1172412	438	8.87
Tole	SS32217	504627	1172411	442	7.3
Tole	SS32218	504578	1172411	446	5.92
Tole	SS32219	504527	1172411	452	4.23
Tole	SS32220	504578	1172311	452	5.36
Tole	SS32221	504627	1172312	447	2.98
Tole	SS32222	504677	1172312	447	2.94
Tole	SS32223	504728	1172312	447	6.21
Tole	SS32224	504778	1172312	441	4.15
Tole	SS32225	504827	1172312	437	3.38
Tole	SS32226	504877	1172312	433	30.6
Tole	SS32227	504927	1172311	433	9.99
Tole	SS32228	504977	1172312	431	8.98
Tole	SS32229	505028	1172311	431	6.38
Tole	SS32230	505078	1172312	426	19.43
Tole	SS32231	505128	1172312	429	25.08
Tole	SS32232	505176	1172312	427	6.57
Tole	SS32233	505227	1172312	429	5.43
Tole	SS32234	505277	1172312	427	4.34
Tole	SS32235	505178	1172612	418	3.96
Tole	SS32236	505128	1172612	421	2.47
Tole	SS32237	505078	1172612	420	4.97
Tole	SS32238	505028	1172612	420	5.03
Tole	SS32239	504978	1172612	422	7.64
Tole	SS32240	504928	1172612	423	34
Tole	SS32241	504878	1172612	427	3.11
Tole	SS32242	504828	1172612	426	5.17
Tole	SS32243	504778	1172612	427	5.19
Tole	SS32244	504728	1172612	432	8.32
Tole	SS32245	504678	1172612	432	9.32
Tole	SS32246	504628	1172612	434	14.38
Tole	SS32247	504578	1172612	435	2260
Tole	SS32248	504528	1172612	437	14.87
Tole	SS32249	504478	1172612	443	8.95
Tole	SS32250	504528	1172512	447	16.04
Tole	SS32252	504577	1172512	438	4.06
Tole	SS32253	504628	1172512	435	3.72
Tole	SS32254	504678	1172512	431	3.2



For personal use only

Project	Sample ID	Easting	Northing	mRL	Au ppb
Tole	SS32255	504728	1172512	428	3.79
Tole	SS32256	504778	1172512	427	3.15
Tole	SS32257	504828	1172512	425	4.03
Tole	SS32258	504878	1172512	424	3.4
Tole	SS32259	504928	1172512	422	2.96
Tole	SS32260	504976	1172512	420	2.73
Tole	SS32261	505028	1172512	421	3.98
Tole	SS32262	505078	1172512	424	22.08
Tole	SS32263	505128	1172512	424	3.23
Tole	SS32264	505178	1172512	422	4.85
Tole	SS32265	505077	1172812	417	3.99
Tole	SS32266	505027	1172811	422	9.09
Tole	SS32267	504978	1172812	420	3.4
Tole	SS32268	504928	1172812	422	3.85
Tole	SS32269	504877	1172811	420	3.64
Tole	SS32270	504828	1172811	418	5.29
Tole	SS32271	504777	1172812	420	4.61
Tole	SS32272	504727	1172812	427	4.12
Tole	SS32273	504678	1172812	430	4.26
Tole	SS32274	504627	1172812	431	5.4
Tole	SS32275	504577	1172812	432	3.28
Tole	SS32276	504528	1172812	439	3.17
Tole	SS32277	504478	1172812	448	2.53
Tole	SS32278	504427	1172812	450	3.37
Tole	SS32279	504427	1172711	449	3.44
Tole	SS32280	504477	1172712	448	11.59
Tole	SS32281	504527	1172711	443	2.4
Tole	SS32282	504577	1172712	440	3.26
Tole	SS32283	504627	1172711	442	4.66
Tole	SS32284	504677	1172711	440	3.55
Tole	SS32285	504727	1172711	437	5.75
Tole	SS32286	504777	1172711	435	206.13
Tole	SS32287	504827	1172712	433	7.81
Tole	SS32288	504878	1172712	430	3.48
Tole	SS32289	504927	1172712	427	3.93
Tole	SS32290	504978	1172711	425	3.32
Tole	SS32291	505027	1172711	422	5.62
Tole	SS32292	505077	1172711	420	2.99
Tole	SS32293	505127	1172711	419	4.53
Tole	SS32294	505030	1173014	419	4.21
Tole	SS32295	504978	1173012	423	117.71
Tole	SS32296	504928	1173012	423	7.09
Tole	SS32297	504878	1173012	425	4.3
Tole	SS32298	504828	1173012	427	3.77
Tole	SS32299	504779	1173011	426	5.11
Tole	SS32300	504728	1173012	423	6.17
Tole	SS32302	504678	1173012	425	5.4
Tole	SS32303	504628	1173012	426	6.28
Tole	SS32304	504578	1173011	429	3.6
Tole	SS32305	504528	1173012	439	3.94
Tole	SS32306	504478	1173011	441	4.28
Tole	SS32307	504428	1173012	439	5.31
Tole	SS32308	504376	1173014	431	7.28
Tole	SS32309	504330	1173012	432	5.98
Tole	SS32310	504378	1172914	449	5.34
Tole	SS32311	504428	1172912	440	4.59



For personal use only

Project	Sample ID	Easting	Northing	mRL	Au ppb
Tole	SS32312	504477	1172914	447	4.57
Tole	SS32313	504528	1172912	440	3.53
Tole	SS32314	504578	1172912	430	3.48
Tole	SS32315	504628	1172912	429	3.65
Tole	SS32316	504678	1172912	429	6.22
Tole	SS32317	504728	1172912	431	7.49
Tole	SS32318	504777	1172912	430	4.97
Tole	SS32319	504828	1172912	426	5.14
Tole	SS32320	504879	1172912	423	12.02
Tole	SS32321	504928	1172912	422	4.73
Tole	SS32322	504978	1172912	418	8.89
Tole	SS32323	505028	1172912	414	12.03
Tole	SS32324	505078	1172912	414	6.05
Tole	SS32325	504327	1173111	429	4.77
Tole	SS32326	504378	1173111	426	5.36
Tole	SS32327	504427	1173112	423	25.64
Tole	SS32328	504477	1173111	423	7.62
Tole	SS32329	504527	1173112	424	4.93
Tole	SS32330	504578	1173112	419	1.49
Tole	SS32331	504628	1173112	414	3.56
Tole	SS32332	504677	1173111	415	5.71
Tole	SS32333	504727	1173111	417	3.74
Tole	SS32334	504777	1173111	414	7.74
Tole	SS32335	504828	1173112	414	3.31
Tole	SS32336	504878	1173111	417	3.53
Tole	SS32337	504928	1173112	416	3.76
Tole	SS32338	504978	1173112	412	3.07
Tole	SS32339	504978	1173211	409	3.94
Tole	SS32340	504927	1173212	411	14.13
Tole	SS32341	504877	1173211	412	1.45
Tole	SS32342	504827	1173212	413	16.17
Tole	SS32343	504777	1173211	413	6.32
Tole	SS32344	504728	1173211	413	3.69
Tole	SS32345	504677	1173212	414	4.35
Tole	SS32346	504628	1173211	413	3.44
Tole	SS32347	504577	1173212	416	5.74
Tole	SS32348	504527	1173212	418	6.01
Tole	SS32349	504478	1173212	421	4.54
Tole	SS32350	504428	1173211	422	5.91
Tole	SS32352	504378	1173211	421	6.53
Tole	SS32353	504327	1173212	421	5.57
Tole	SS32354	504277	1173211	422	2.64
Tole	SS32355	504878	1173412	415	8.11
Tole	SS32356	504828	1173412	415	6.1
Tole	SS32357	504778	1173412	413	7.93
Tole	SS32358	504528	1173412	414	4.07
Tole	SS32359	504478	1173412	413	3.29
Tole	SS32360	504428	1173412	413	4.21
Tole	SS32361	504378	1173412	412	4.17
Tole	SS32362	504328	1173412	413	3.82
Tole	SS32363	504278	1173412	412	3.85
Tole	SS32364	504228	1173412	412	4.58
Tole	SS32365	504228	1173312	415	9.36
Tole	SS32366	504278	1173312	414	4.07
Tole	SS32367	504328	1173312	414	6.49
Tole	SS32368	504378	1173312	414	24.15



For personal use only

Project	Sample ID	Easting	Northing	mRL	Au ppb
Tole	SS32369	504428	1173312	414	5.39
Tole	SS32370	504478	1173312	415	7.54
Tole	SS32371	504528	1173312	415	5.87
Tole	SS32372	504578	1173312	413	4.19
Tole	SS32373	504628	1173312	412	3.69
Tole	SS32374	504678	1173312	410	5.48
Tole	SS32375	504728	1173312	410	15.64
Tole	SS32376	504877	1173511	415	6.32
Tole	SS32377	504827	1173511	414	6.12
Tole	SS32378	504778	1173512	411	9.48
Tole	SS32379	504727	1173512	410	3.81
Tole	SS32380	504177	1173612	412	3.7
Tole	SS32381	504227	1173611	411	3.72
Tole	SS32382	504277	1173612	412	4.25
Tole	SS32383	504578	1173611	411	1160
Tole	SS32384	504628	1173611	412	8.83
Tole	SS32385	504677	1173611	415	3.71
Tole	SS32386	504727	1173611	415	3.39
Tole	SS32387	504777	1173612	424	3.61
Tole	SS32388	504828	1173612	424	5.1
Tole	SS32389	504778	1173812	422	3.98
Tole	SS32390	504728	1173812	425	5.23
Tole	SS32391	504678	1173812	426	2.79
Tole	SS32392	504629	1173812	428	3.76
Tole	SS32393	504578	1173812	430	4.41
Tole	SS32394	504529	1173813	430	10.21
Tole	SS32395	504478	1173812	437	6.51
Tole	SS32396	504428	1173812	440	7.53
Tole	SS32397	504378	1173812	432	4.79
Tole	SS32398	504328	1173812	425	4.37
Tole	SS32399	504278	1173812	420	3.55
Tole	SS32400	504228	1173812	421	2.6
Tole	SS32402	504178	1173812	418	4.6
Tole	SS32403	504128	1173812	416	6.19
Tole	SS32404	504078	1173812	419	6.66
Tole	SS32405	504132	1173724	412	12.95
Tole	SS32406	504174	1173730	413	6.23
Tole	SS32407	504233	1173717	413	4.98
Tole	SS32408	504278	1173712	418	14.55
Tole	SS32409	504328	1173712	416	8.22
Tole	SS32410	504378	1173712	417	8.68
Tole	SS32411	504428	1173712	419	13.57
Tole	SS32412	504478	1173712	418	4.33
Tole	SS32413	504528	1173712	419	6.64
Tole	SS32414	504578	1173711	416	3.75
Tole	SS32415	504628	1173712	414	3.47
Tole	SS32416	504678	1173712	415	6.98
Tole	SS32417	504728	1173712	422	10.25
Tole	SS32418	504778	1173712	421	23.24
Tole	SS32419	504828	1173712	423	9.54
Tole	SS32420	504728	1174012	419	5.2
Tole	SS32421	504677	1174012	418	25.29
Tole	SS32422	504628	1174011	419	6.55
Tole	SS32423	504577	1174011	422	5.46
Tole	SS32424	504528	1174011	422	14.85
Tole	SS32425	504478	1174012	424	4.79



For personal use only

Project	Sample ID	Easting	Northing	mRL	Au ppb
Tole	SS32426	504428	1174010	428	4.47
Tole	SS32427	504377	1174011	430	2.58
Tole	SS32428	504327	1174011	429	16.49
Tole	SS32429	504277	1174011	427	5.84
Tole	SS32430	504228	1174012	425	5.55
Tole	SS32431	504178	1174012	427	3.52
Tole	SS32432	504128	1174012	424	7.45
Tole	SS32433	504077	1174011	421	3.84
Tole	SS32434	504027	1174011	419	12.4
Tole	SS32435	504077	1173912	417	8.32
Tole	SS32436	504127	1173912	418	37.36
Tole	SS32437	504178	1173912	421	27.3
Tole	SS32438	504227	1173911	421	4.47
Tole	SS32439	504278	1173911	420	3.91
Tole	SS32440	504327	1173912	422	8.7
Tole	SS32441	504377	1173911	425	7.23
Tole	SS32442	504427	1173912	426	5.58
Tole	SS32443	504477	1173912	432	4.12
Tole	SS32444	504527	1173911	436	21.27
Tole	SS32445	504577	1173911	431	4.87
Tole	SS32446	504628	1173911	427	5.27
Tole	SS32447	504678	1173913	428	5.56
Tole	SS32448	504727	1173912	423	1.91
Tole	SS32449	503978	1174211	434	4.19
Tole	SS32450	504028	1174212	432	4.33
Tole	SS32452	504078	1174211	437	46.47
Tole	SS32453	504128	1174212	437	2.35
Tole	SS32454	504178	1174212	437	6.72
Tole	SS32455	504228	1174212	437	1.85
Tole	SS32456	504278	1174212	435	4.78
Tole	SS32457	504328	1174212	433	5.3
Tole	SS32458	504378	1174212	433	5.11
Tole	SS32459	504428	1174212	430	4.23
Tole	SS32460	504478	1174212	431	3.71
Tole	SS32461	504528	1174212	429	2.06
Tole	SS32462	504578	1174212	423	3.09
Tole	SS32463	504628	1174212	424	2.42
Tole	SS32464	504678	1174112	422	4.48
Tole	SS32465	504628	1174112	421	2.74
Tole	SS32466	504578	1174112	423	2.21
Tole	SS32467	504528	1174112	425	3.1
Tole	SS32468	504478	1174112	425	2.85
Tole	SS32469	504428	1174112	428	4.28
Tole	SS32470	504378	1174112	430	10.99
Tole	SS32471	504328	1174112	430	5.65
Tole	SS32472	504278	1174112	430	3.9
Tole	SS32473	504228	1174111	431	13.41
Tole	SS32474	504178	1174112	430	3.19
Tole	SS32475	504128	1174112	430	4.27
Tole	SS32476	504078	1174112	428	6.22
Tole	SS32477	504028	1174112	427	6.28
Tole	SS32478	503978	1174112	424	5.08
Tole	SS32479	503878	1174411	441	27.81
Tole	SS32480	503928	1174412	441	8.34
Tole	SS32481	503977	1174412	439	7.21
Tole	SS32482	504028	1174412	438	4.45



For personal use only

Project	Sample ID	Easting	Northing	mRL	Au ppb
Tole	SS32483	504077	1174412	439	31.64
Tole	SS32484	504128	1174412	440	4.75
Tole	SS32485	504178	1174412	439	4.64
Tole	SS32486	504228	1174412	438	3.94
Tole	SS32487	504278	1174412	438	5.68
Tole	SS32488	504327	1174411	435	4.35
Tole	SS32489	504377	1174411	434	5.41
Tole	SS32490	504427	1174412	433	4.25
Tole	SS32491	504478	1174411	431	7.82
Tole	SS32492	504527	1174412	431	3.66
Tole	SS32493	504578	1174411	428	9.97
Tole	SS32494	504628	1174311	429	29.9
Tole	SS32495	504577	1174312	427	6.33
Tole	SS32496	504527	1174311	427	8.75
Tole	SS32497	504478	1174312	431	2.01
Tole	SS32498	504427	1174312	430	2.91
Tole	SS32499	504378	1174311	431	3
Tole	SS32500	504327	1174311	434	9.52
Tole	SS32502	504278	1174312	438	12.46
Tole	SS32503	504228	1174311	439	4.51
Tole	SS32504	504178	1174312	444	6.03
Tole	SS32505	504127	1174312	438	7.64
Tole	SS32506	504077	1174312	440	6.32
Tole	SS32507	504027	1174312	438	5.67
Tole	SS32508	503977	1174312	437	2.56
Tole	SS32509	503927	1174312	438	9.3
Tole	SS32510	503827	1174611	441	10.55
Tole	SS32511	503878	1174612	443	3.12
Tole	SS32512	503927	1174612	445	22.04
Tole	SS32513	503978	1174612	444	16.03
Tole	SS32514	504028	1174612	443	3.12
Tole	SS32515	504078	1174612	443	8.5
Tole	SS32516	504129	1174611	440	8.12
Tole	SS32517	504177	1174611	439	5.45
Tole	SS32518	504228	1174612	437	19.14
Tole	SS32519	504278	1174612	438	4.43
Tole	SS32520	504328	1174612	436	5.33
Tole	SS32521	504376	1174611	434	6.91
Tole	SS32522	504428	1174612	431	4.18
Tole	SS32523	504478	1174612	431	1.67
Tole	SS32524	504528	1174612	428	2.02
Tole	SS32525	504528	1174512	428	3.22
Tole	SS32526	504478	1174511	432	2.43
Tole	SS32527	504427	1174514	432	3.98
Tole	SS32528	504378	1174512	436	3.27
Tole	SS32529	504328	1174512	438	7.89
Tole	SS32530	504284	1174511	438	2.59
Tole	SS32531	504228	1174512	441	3.9
Tole	SS32532	504178	1174512	443	3.59
Tole	SS32533	504128	1174512	446	3.76
Tole	SS32534	504078	1174512	446	10.02
Tole	SS32535	504028	1174512	442	5.3
Tole	SS32536	503978	1174512	444	10.73
Tole	SS32537	503928	1174512	443	9.07
Tole	SS32538	503878	1174512	445	4.35
Tole	SS32539	503778	1174712	458	5.69



For personal use only

Project	Sample ID	Easting	Northing	mRL	Au ppb
Tole	SS32540	503777	1174811	463	12.71
Tole	SS32541	503827	1174812	462	23.3
Tole	SS32542	503877	1174811	459	4.11
Tole	SS32543	503927	1174812	460	7.18
Tole	SS32544	503977	1174811	459	5.11
Tole	SS32545	504028	1174811	457	5
Tole	SS32546	504078	1174811	450	3.36
Tole	SS32547	504128	1174812	449	3.26
Tole	SS32548	504178	1174812	445	2.3
Tole	SS32549	504227	1174811	442	2.82
Tole	SS32550	504277	1174811	441	2.17
Tole	SS32552	504327	1174812	439	3.85
Tole	SS32553	504378	1174812	438	2.87
Tole	SS32554	504428	1174811	436	4.17
Tole	SS32555	504477	1174711	433	4.66
Tole	SS32556	504428	1174712	434	4.15
Tole	SS32557	504378	1174711	433	7.39
Tole	SS32558	504327	1174712	438	77.35
Tole	SS32559	504278	1174711	440	2.41
Tole	SS32560	504227	1174711	442	2.67
Tole	SS32561	504177	1174712	444	3.2
Tole	SS32562	504127	1174711	445	5.14
Tole	SS32563	504077	1174712	449	15.42
Tole	SS32564	504027	1174712	453	9
Tole	SS32565	503977	1174712	456	5.53
Tole	SS32566	503927	1174712	454	3.27
Tole	SS32567	503878	1174712	455	12.49
Tole	SS32568	503827	1174712	457	4.11
Tole	SS32569	503677	1175014	467	24.06
Tole	SS32570	503728	1175012	476	4.6
Tole	SS32571	503778	1175012	476	5.37
Tole	SS32572	503828	1175012	484	3.96
Tole	SS32573	503878	1175012	495	3.12
Tole	SS32574	503928	1175012	486	5.14
Tole	SS32575	503978	1175012	479	7.67
Tole	SS32576	504028	1175012	468	69.65
Tole	SS32577	504079	1175012	458	8.38
Tole	SS32578	504128	1175012	452	10.4
Tole	SS32579	504178	1175014	447	10.59
Tole	SS32580	504228	1175012	442	7.11
Tole	SS32581	504278	1175012	440	6.52
Tole	SS32582	504328	1175012	439	5.66
Tole	SS32583	504378	1175012	436	5.11
Tole	SS32584	504428	1174912	430	6.39
Tole	SS32585	504378	1174912	431	4.41
Tole	SS32586	504330	1174912	434	470.89
Tole	SS32587	504278	1174912	437	10.5
Tole	SS32588	504228	1174912	440	2.45
Tole	SS32589	504179	1174915	442	4.36
Tole	SS32590	504129	1174911	445	7.49
Tole	SS32591	504078	1174912	447	4.78
Tole	SS32592	504028	1174911	452	19.43
Tole	SS32593	503980	1174911	458	5.52
Tole	SS32594	503928	1174913	469	9.19
Tole	SS32595	503878	1174913	477	27.09
Tole	SS32596	503828	1174912	485	8.58



For personal use only

Project	Sample ID	Easting	Northing	mRL	Au ppb
Tole	SS32597	503778	1174913	488	3.42
Tole	SS32598	503728	1174912	478	6.05
Tole	SS32599	503627	1175211	452	11.13
Tole	SS32600	503678	1175212	455	1.66
Tole	SS32602	503728	1175211	455	3.09
Tole	SS32603	503778	1175212	456	5.09
Tole	SS32604	503828	1175211	459	3.06
Tole	SS32605	503877	1175212	461	6.27
Tole	SS32606	503927	1175212	462	2.92
Tole	SS32607	503978	1175212	463	12.48
Tole	SS32608	504027	1175211	463	10.13
Tole	SS32609	504078	1175212	457	12.11
Tole	SS32610	504128	1175211	456	87.78
Tole	SS32611	504177	1175212	454	7.5
Tole	SS32612	504228	1175212	451	4.74
Tole	SS32613	504278	1175212	448	3.78
Tole	SS32614	504327	1175211	446	6.12
Tole	SS32615	504328	1175112	440	8.13
Tole	SS32616	504277	1175112	442	5.25
Tole	SS32617	504228	1175112	445	5.78
Tole	SS32618	504177	1175112	450	6.8
Tole	SS32619	504127	1175112	455	10.68
Tole	SS32620	504078	1175111	462	23.61
Tole	SS32621	504028	1175112	470	4.93
Tole	SS32622	503977	1175112	483	8.99
Tole	SS32623	503928	1175111	485	3.11
Tole	SS32624	503878	1175112	483	3.02
Tole	SS32625	503828	1175112	475	2.4
Tole	SS32626	503778	1175111	467	2.3
Tole	SS32627	503728	1175112	464	7.97
Tole	SS32628	503677	1175112	463	5.17
Tole	SS32629	504208	1176198	419	9.56
Tole	SS32630	504265	1176115	416	6.17
Tole	SS32631	504306	1176142	418	8.98
Tole	SS32632	504348	1176169	416	9.59
Tole	SS32633	504389	1176198	410	13.04
Tole	SS32634	504570	1176198	420	7.98
Tole	SS32635	504527	1176170	416	7.07
Tole	SS32636	504487	1176141	415	6.36
Tole	SS32637	504443	1176115	413	8.6
Tole	SS32638	504403	1176087	412	7.05
Tole	SS32639	504362	1176058	411	6.95
Tole	SS32640	504319	1176032	412	6.4
Tole	SS32641	504375	1175948	417	3.97
Tole	SS32642	504416	1175975	417	5.08
Tole	SS32643	504458	1176004	413	7.27
Tole	SS32644	504542	1176058	412	7.26
Tole	SS32645	504583	1176086	411	17.38
Tole	SS32646	504624	1176114	413	8.16
Tole	SS32647	504666	1176142	413	6.07
Tole	SS32648	504708	1176170	412	4.36
Tole	SS32649	504749	1176198	416	6.45
Tole	SS32650	505111	1176197	412	4.52
Tole	SS32652	505069	1176170	412	10.99
Tole	SS32653	505028	1176142	411	3.99
Tole	SS32654	504985	1176114	410	4.47



For personal use only

Project	Sample ID	Easting	Northing	mRL	Au ppb
Tole	SS32655	504818	1176004	410	5.78
Tole	SS32656	504778	1175976	410	6.95
Tole	SS32657	504694	1175920	410	11.58
Tole	SS32658	504653	1175893	411	5.02
Tole	SS32659	504611	1175865	414	4.87
Tole	SS32660	504570	1175838	414	3.92
Tole	SS32661	504528	1175810	415	16.24
Tole	SS32662	504486	1175782	417	2.52
Tole	SS32663	504431	1175865	414	6.78
Tole	SS32664	504473	1175894	414	5.5
Tole	SS32665	504514	1175921	413	2.85
Tole	SS32666	504556	1175948	413	253.74
Tole	SS32667	504639	1176004	410	8.14
Tole	SS32668	504681	1176031	409	8.11
Tole	SS32669	504764	1176087	409	4.95
Tole	SS32670	504806	1176114	411	8.47
Tole	SS32671	504847	1176142	412	5.09
Tole	SS32672	504889	1176170	411	4.23
Tole	SS32673	504929	1176197	410	9.86
Tole	SS32674	505292	1176197	415	2.73
Tole	SS32675	505248	1176169	412	4.05
Tole	SS32676	505207	1176141	412	7.55
Tole	SS32677	505165	1176113	413	2.75
Tole	SS32678	504958	1175976	413	6.37
Tole	SS32679	504916	1175948	411	8.92
Tole	SS32680	504832	1175891	415	7.94
Tole	SS32681	504791	1175864	413	6.25
Tole	SS32682	504750	1175837	413	12.24
Tole	SS32683	504708	1175808	416	3.31
Tole	SS32684	504666	1175782	419	5.26
Tole	SS32685	504625	1175754	422	1.62
Tole	SS32686	504582	1175726	423	1.87
Tole	SS32687	504541	1175699	426	5.5
Tole	SS32688	505513	1176225	412	7.74
Tole	SS32689	505472	1176197	409	8.77
Tole	SS32690	505430	1176169	408	5.54
Tole	SS32691	505389	1176142	406	5.15
Tole	SS32692	505013	1175892	407	6.7
Tole	SS32693	504973	1175865	408	5.02
Tole	SS32694	504929	1175837	407	5.36
Tole	SS32695	504887	1175809	410	4.52
Tole	SS32696	504846	1175783	412	2.51
Tole	SS32697	504805	1175754	413	9.92
Tole	SS32698	504764	1175726	414	5.87
Tole	SS32699	504724	1175698	417	2.52
Tole	SS32700	504680	1175670	419	3.37
Tole	SS32702	504639	1175643	421	1.16
Tole	SS32703	504597	1175615	423	2.79
Tole	SS32704	504651	1175531	426	3
Tole	SS32705	504693	1175559	426	6.32
Tole	SS32706	504736	1175586	418	3.15
Tole	SS32707	504776	1175615	420	2.56
Tole	SS32708	504819	1175643	421	24.04
Tole	SS32709	504860	1175670	420	4.44
Tole	SS32710	504902	1175698	419	10.06
Tole	SS32711	504944	1175725	411	6.13



For personal use only

Project	Sample ID	Easting	Northing	mRL	Au ppb
Tole	SS32712	504986	1175754	412	7.92
Tole	SS32713	505027	1175781	410	4.19
Tole	SS32714	505069	1175809	407	4.32
Tole	SS32715	505110	1175837	408	5.09
Tole	SS32716	505151	1175864	409	6.31
Tole	SS32717	505194	1175892	408	6.64
Tole	SS32718	505443	1176057	410	6.39
Tole	SS32719	505485	1176085	411	30.14
Tole	SS32720	505527	1176114	411	6.42
Tole	SS32721	505567	1176141	412	5.8
Tole	SS32722	505609	1176168	415	12.95
Tole	SS32723	505651	1176197	416	12.16
Tole	SS32724	505693	1176224	416	16.15
Tole	SS32725	506053	1176224	421	2.56
Tole	SS32726	506011	1176195	421	1.99
Tole	SS32727	505970	1176169	420	4.8
Tole	SS32728	505928	1176141	418	4.22
Tole	SS32729	505886	1176112	417	1.21
Tole	SS32730	504665	1175421	426	3.7
Tole	SS32731	504707	1175448	425	0.38
Tole	SS32732	504749	1175477	427	5.95
Tole	SS32733	504791	1175504	426	38.17
Tole	SS32734	504833	1175532	427	4.68
Tole	SS32735	504874	1175560	425	1.33
Tole	SS32736	504916	1175587	425	3.92
Tole	SS32737	504958	1175615	418	0.31
Tole	SS32738	504999	1175643	416	5.55
Tole	SS32739	505041	1175670	417	4.25
Tole	SS32740	505083	1175698	415	2.88
Tole	SS32741	505124	1175726	411	2.98
Tole	SS32742	505165	1175754	409	15.56
Tole	SS32743	505206	1175781	407	2.52
Tole	SS32744	505249	1175809	408	3.25
Tole	SS32745	505291	1175837	407	4.33
Tole	SS32746	505332	1175864	408	6.65
Tole	SS32747	505374	1175892	407	8.85
Tole	SS32748	505415	1175916	405	4.73
Tole	SS32749	505540	1176007	406	9.51
Tole	SS32750	505582	1176030	405	5.24
Tole	SS32752	505624	1176058	407	8.58
Tole	SS32753	505665	1176085	408	10.36
Tole	SS32754	505707	1176113	408	10.42
Tole	SS32755	505749	1176141	409	4.59
Tole	SS32756	505790	1176169	412	5.87
Tole	SS32757	505832	1176198	414	7.46
Tole	SS32758	505875	1176224	416	4.15
Tole	SS32759	505846	1176085	414	8.16
Tole	SS32760	505803	1176057	416	6.64
Tole	SS32761	505761	1176030	413	12.35
Tole	SS32762	505720	1176003	410	10.93
Tole	SS32763	505679	1175975	409	14.7
Tole	SS32764	505595	1175919	406	10.6
Tole	SS32765	505553	1175891	404	11.84
Tole	SS32766	505512	1175864	406	11.57
Tole	SS32767	505471	1175835	406	12.49
Tole	SS32768	505429	1175808	407	3.93



For personal use only

Project	Sample ID	Easting	Northing	mRL	Au ppb
Tole	SS32769	505388	1175780	408	19.97
Tole	SS32770	505346	1175752	408	15.89
Tole	SS32771	505303	1175725	406	6.64
Tole	SS32772	505263	1175698	412	5.41
Tole	SS32773	505221	1175669	412	3.2
Tole	SS32774	505179	1175642	415	2.62
Tole	SS32775	505138	1175615	413	2.89
Tole	SS32776	505096	1175587	419	22.94
Tole	SS32777	505054	1175558	426	4.91
Tole	SS32778	505013	1175531	429	4.25
Tole	SS32779	504970	1175504	430	4.43
Tole	SS32780	504929	1175476	430	3.12
Tole	SS32781	504888	1175449	433	5.48
Tole	SS32782	504847	1175421	431	8.56
Tole	SS32783	504804	1175392	427	6.27
Tole	SS32784	504762	1175365	427	9.04
Tole	SS32785	504722	1175337	427	3.43
Tole	SS32786	504776	1175254	429	4.47
Tole	SS32787	504819	1175281	430	5.16
Tole	SS32788	504860	1175309	429	14
Tole	SS32789	504901	1175338	433	5.32
Tole	SS32790	506234	1176225	424	3.96
Tole	SS32791	506192	1176195	419	2.64
Tole	SS32792	506151	1176168	421	5.49
Tole	SS32793	506109	1176140	418	4.21
Tole	SS32794	506068	1176113	419	4.17
Tole	SS32795	506026	1176085	416	2.82
Tole	SS32796	505984	1176058	413	11.8
Tole	SS32797	505943	1176030	410	4.98
Tole	SS32798	505901	1176002	409	10.07
Tole	SS32799	505860	1175975	408	5.52
Tole	SS32800	505817	1175946	407	10.47
Tole	SS32802	505735	1175891	406	9.47
Tole	SS32803	505693	1175864	407	9.07
Tole	SS32804	505651	1175836	408	13.25
Tole	SS32805	505611	1175808	409	12.69
Tole	SS32806	505568	1175781	412	16.67
Tole	SS32807	505526	1175753	411	7.85
Tole	SS32808	505485	1175725	411	8.15
Tole	SS32809	505442	1175698	412	5.8
Tole	SS32810	505401	1175670	415	5.73
Tole	SS32811	505360	1175641	417	8.74
Tole	SS32812	505318	1175615	419	4.52
Tole	SS32813	505277	1175587	422	20.47
Tole	SS32814	505235	1175560	425	2.54
Tole	SS32815	505194	1175532	425	4.24
Tole	SS32816	505152	1175504	425	46.42
Tole	SS32817	505110	1175476	428	5.85
Tole	SS32818	505068	1175448	429	90.77
Tole	SS32819	505026	1175420	433	6.86
Tole	SS32820	504985	1175393	434	4.29
Tole	SS32821	504944	1175365	430	6.85
Tole	SS32822	506287	1176141	416	3.57
Tole	SS32823	506247	1176114	416	4.05
Tole	SS32824	506205	1176085	418	4.12
Tole	SS32825	506165	1176058	416	3.42



For personal use only

Project	Sample ID	Easting	Northing	mRL	Au ppb
Tole	SS32826	506122	1176030	415	3.32
Tole	SS32827	506080	1176001	418	4.65
Tole	SS32828	506040	1175973	412	4.87
Tole	SS32829	505997	1175947	413	9.5
Tole	SS32830	505956	1175919	408	7.39
Tole	SS32831	505914	1175891	405	6.17
Tole	SS32832	505831	1175835	409	8.1
Tole	SS32833	505790	1175808	407	7.85
Tole	SS32834	505748	1175780	406	13.06
Tole	SS32835	505706	1175753	407	12.76
Tole	SS32836	505665	1175724	405	12.31
Tole	SS32837	505623	1175698	410	20.63
Tole	SS32838	505581	1175669	412	9.74
Tole	SS32839	505539	1175641	415	10.62
Tole	SS32840	505497	1175614	415	8.37
Tole	SS32841	505456	1175587	419	4.68
Tole	SS32842	505414	1175559	421	8.66
Tole	SS32843	505373	1175531	424	11.52
Tole	SS32844	505331	1175504	428	10.13
Tole	SS32845	505290	1175475	430	9.44
Tole	SS32846	505248	1175448	429	6.71
Tole	SS32847	505206	1175420	429	4.08
Tole	SS32848	505164	1175393	433	16.22
Tole	SS32849	505123	1175365	433	3.45
Tole	SS32850	505082	1175337	434	4.18
Tole	SS32852	505040	1175309	435	12.96
Tole	SS32853	504999	1175281	434	5.89
Tole	SS32854	504956	1175253	433	4.46
Tole	SS32855	504915	1175227	433	6.77
Tole	SS32856	504874	1175198	432	3.52
Tole	SS32857	504831	1175170	431	7.18
Tole	SS32858	504888	1175088	424	3.03
Tole	SS32859	505414	1174478	431	7.74
Tole	SS32860	505372	1174450	437	9.05
Tole	SS32861	505331	1174422	441	4.31
Tole	SS32862	505288	1174394	439	4.74
Tole	SS32863	505234	1174478	435	1.64
Tole	SS32864	505275	1174506	435	1.32
Tole	SS32865	505317	1174533	437	4.36
Tole	SS32866	505358	1174561	436	6.42
Tole	SS32867	505303	1174644	434	3.94
Tole	SS32868	505261	1174617	435	3.47
Tole	SS32869	505220	1174589	433	3.29
Tole	SS32870	505166	1174671	429	3.75
Tole	SS32871	505206	1174699	430	3.73
Tole	SS32872	505248	1174727	432	4.89
Tole	SS32873	505193	1174810	428	3.45
Tole	SS32874	505151	1174783	430	2.62
Tole	SS32875	505109	1174755	427	2.44
Tole	SS32876	505054	1174838	426	4.07
Tole	SS32877	505096	1174866	426	2.79
Tole	SS32878	505137	1174894	428	4.92
Tole	SS32879	505082	1174977	429	4.55
Tole	SS32880	505040	1174948	424	12.86
Tole	SS32881	504999	1174922	425	3.57
Tole	SS32882	504943	1175005	427	3.39



For personal use only

Project	Sample ID	Easting	Northing	mRL	Au ppb
Tole	SS32883	504985	1175033	428	4.59
Tole	SS32884	505025	1175061	428	6.21
Tole	SS32885	504970	1175144	430	5.46
Tole	SS32886	504930	1175116	427	12.34
Tole	SS32887	505470	1174394	422	5.78
Tole	SS32888	505427	1174365	429	3.53
Tole	SS32889	505386	1174338	428	4.41
Tole	SS32890	505344	1174311	430	6.42
Tole	SS32891	505400	1174227	428	3.27
Tole	SS32892	505441	1174254	429	6.33
Tole	SS32893	505483	1174283	427	6.62
Tole	SS32894	505525	1174311	423	3.81
Tole	SS32895	505579	1174227	419	8.69
Tole	SS32896	505538	1174199	419	5.65
Tole	SS32897	505496	1174172	425	3.39
Tole	SS32898	505454	1174145	427	4.16
Tole	SS32899	505510	1174061	418	2.42
Tole	SS32900	505551	1174089	417	5.11
Tole	SS32902	505593	1174116	416	8.2
Tole	SS32903	505635	1174143	417	8.36
Tole	SS32904	505690	1174060	413	6.26
Tole	SS32905	505648	1174033	414	4.95
Tole	SS32906	505608	1174005	412	3.71
Tole	SS32907	505621	1173895	413	5.83
Tole	SS32908	505662	1173921	412	3.31
Tole	SS32909	505705	1173950	412	4.38
Tole	SS32910	505802	1173895	412	2.75
Tole	SS32911	505759	1173866	413	2.81
Tole	SS32912	505718	1173839	415	3.35
Tole	SS32913	505676	1173810	417	3.03
Tole	SS32914	505732	1173728	421	3.18
Tole	SS32915	505774	1173755	421	2.56
Tole	SS32916	505815	1173783	419	3.31
Tole	SS32917	505857	1173811	419	2.48
Tole	SS32918	507120	1174531	402	2.13
Tole	SS32919	507078	1174503	405	3.12
Tole	SS32920	507040	1174477	401	2.07
Tole	SS32921	506995	1174448	399	3.07
Tole	SS32922	506940	1174531	397	3.95
Tole	SS32923	506898	1174504	402	5.47
Tole	SS32924	506884	1174615	407	3.24
Tole	SS32925	506843	1174587	406	2.4
Tole	SS32926	506801	1174559	404	2.19
Tole	SS32927	506759	1174532	405	2.72
Tole	SS32928	506746	1174642	408	2.35
Tole	SS32929	506787	1174670	412	3.65
Tole	SS32930	506829	1174698	413	3.82
Tole	SS32931	506870	1174726	413	2.5
Tole	SS32932	506912	1174753	414	3.63
Tole	SS32933	506815	1174809	412	4.61
Tole	SS32934	506773	1174781	412	4.57
Tole	SS32935	506732	1174753	411	4.7
Tole	SS32936	506690	1174725	410	6.2
Tole	SS32937	506649	1174698	413	6.77
Tole	SS32938	506593	1174781	413	5.09
Tole	SS32939	506635	1174809	414	5.33



Project	Sample ID	Easting	Northing	mRL	Au ppb
Tole	SS32940	506678	1174827	412	10.71

Table 3. Dump Sample Results

Project	Sample ID	Easting	Northing	MRL	Au (ppb)
Dadjan	DU10825	494292	1168651	414	9.08
Dadjan	DU10826	494272	1168648	414	8.85
Dadjan	DU10827	494247	1168649	415	7.99
Dadjan	DU10828	494223	1168652	415	5.72
Dadjan	DU10829	494200	1168656	414	10.96
Dadjan	DU10830	494167	1168650	414	10.18
Dadjan	DU10831	494148	1168652	414	6.42
Dadjan	DU10832	494126	1168651	415	0.1
Dadjan	DU10833	494107	1168641	412	10.76
Dadjan	DU10834	494110	1168658	412	16.32
Dadjan	DU10835	494099	1168651	411	10.53
Dadjan	DU10836	494074	1168648	411	11.91
Dadjan	DU10837	494047	1168651	411	19.3
Dadjan	DU10838	494025	1168650	407	10.16
Dadjan	DU10839	494006	1168652	407	28.2
Dadjan	DU10840	493978	1168654	407	12.71
Dadjan	DU10841	493947	1168649	407	8.9
Dadjan	DU10842	493891	1168651	405	6.61
Dadjan	DU10843	493872	1168653	404	13.88
Dadjan	DU10844	493854	1168654	405	12.99
Dadjan	DU10845	493837	1168648	405	40.95
Dadjan	DU10846	494323	1168646	430	13.24
Dadjan	DU10847	494348	1168651	432	13.35
Dadjan	DU10848	494373	1168649	433	12.56
Dadjan	DU10849	494393	1168657	436	12.48
Dadjan	DU10850	494432	1168646	437	25.07
Dadjan	DU10852	494445	1168638	436	22.73
Dadjan	DU10853	494473	1168654	437	12.86
Dadjan	DU10854	494511	1168666	438	26.83
Dadjan	DU10855	494531	1168652	439	21.13
Dadjan	DU10856	494552	1168648	441	13.47
Dadjan	DU10857	494572	1168648	442	14.73
Dadjan	DU10858	494604	1168656	444	8.48
Dadjan	DU10859	494623	1168658	443	15.81
Dadjan	DU10860	494640	1168648	443	17.02
Dadjan	DU10861	494677	1168652	445	9.56
Dadjan	DU10862	494701	1168654	447	16.55
Dadjan	DU10863	494722	1168647	448	8.86
Dadjan	DU10864	494755	1168636	450	5.38
Dadjan	DU10865	494773	1168642	451	7.5
Dadjan	DU10866	494803	1168649	453	11.72
Dadjan	DU10867	494828	1168654	455	6.16
Dadjan	DU10868	494847	1168654	457	8.04
Dadjan	DU10869	494874	1168651	458	8.51
Dadjan	DU10870	494905	1168651	460	6.35
Dadjan	DU10871	494998	1168656	461	5.24
Dadjan	DU10872	494374	1168599	425	13.06
Dadjan	DU10873	494349	1168605	425	10.64
Dadjan	DU10874	494337	1168594	426	14.83

For personal use only



For personal use only

Project	Sample ID	Easting	Northing	MRL	Au (ppb)
Dadjan	DU10875	494302	1168592	427	15.15
Dadjan	DU10876	494282	1168591	427	17.31
Dadjan	DU10877	494259	1168579	427	6.77
Dadjan	DU10878	494243	1168607	429	15.98
Dadjan	DU10879	494216	1168604	428	7.94
Dadjan	DU10880	494206	1168605	428	10.12
Dadjan	DU10881	494189	1168611	429	9.49
Dadjan	DU10882	494154	1168614	429	7.16
Dadjan	DU10883	494118	1168593	429	21.18
Dadjan	DU10884	494086	1168610	430	17.65
Dadjan	DU10885	494072	1168598	430	18.64
Dadjan	DU10886	494049	1168599	430	30.17
Dadjan	DU10887	494021	1168595	431	2610
Dadjan	DU10888	493999	1168613	432	362.38
Dadjan	DU10889	493977	1168601	431	10.85
Dadjan	DU10890	493957	1168602	432	19.35
Dadjan	DU10891	493922	1168596	430	19.27
Dadjan	DU10892	493896	1168608	430	7.61
Dadjan	DU10893	493875	1168601	430	30.79
Dadjan	DU10894	493775	1168605	429	7.62
Dadjan	DU10895	494398	1168603	432	12.08
Dadjan	DU10896	494430	1168594	432	14.37
Dadjan	DU10897	494453	1168601	434	14.61
Dadjan	DU10898	494472	1168598	433	12.13
Dadjan	DU10899	494498	1168603	435	10.5
Dadjan	DU10900	494530	1168596	435	11.24
Dadjan	DU10902	494557	1168601	434	19.82
Dadjan	DU10903	494565	1168601	434	21.32
Dadjan	DU10904	494599	1168594	434	5.96
Dadjan	DU10905	494633	1168602	435	14.79
Dadjan	DU10906	494652	1168588	435	8.98
Dadjan	DU10907	494676	1168602	435	7.37
Dadjan	DU10908	494700	1168590	434	7
Dadjan	DU10909	494723	1168599	434	9.35
Dadjan	DU10910	494757	1168597	434	5.06
Dadjan	DU10911	494776	1168601	435	5.24
Dadjan	DU10912	494798	1168599	437	8.14
Dadjan	DU10913	494825	1168598	439	9.55
Dadjan	DU10914	494818	1168584	439	4.34
Dadjan	DU10915	494848	1168596	442	5.08
Dadjan	DU10916	494875	1168599	443	9.36
Dadjan	DU10917	494898	1168597	444	4.3
Dadjan	DU10918	494402	1168549	394	13.87
Dadjan	DU10919	494392	1168541	394	14.84
Dadjan	DU10920	494372	1168550	393	11.56
Dadjan	DU10921	494351	1168551	391	9.96
Dadjan	DU10922	494329	1168552	392	7.54
Dadjan	DU10923	494292	1168549	392	4.67
Dadjan	DU10924	494277	1168557	392	8.66
Dadjan	DU10925	494261	1168539	391	9.09
Dadjan	DU10926	494217	1168556	389	7.41
Dadjan	DU10927	494194	1168554	390	11.17
Dadjan	DU10928	494172	1168540	390	19.38
Dadjan	DU10929	494149	1168550	391	8.61
Dadjan	DU10930	494135	1168546	392	100.76



For personal use only

Project	Sample ID	Easting	Northing	MRL	Au (ppb)
Dadjan	DU10931	494099	1168550	393	27.29
Dadjan	DU10932	494050	1168545	392	12.12
Dadjan	DU10933	494030	1168560	392	13.71
Dadjan	DU10934	494000	1168549	391	12.13
Dadjan	DU10935	493975	1168557	391	27.28
Dadjan	DU10936	493953	1168548	390	9.87
Dadjan	DU10937	493915	1168564	391	11.5
Dadjan	DU10938	493894	1168544	391	14.23
Dadjan	DU10939	494428	1168556	422	19.52
Dadjan	DU10940	494450	1168550	422	18.03
Dadjan	DU10941	494473	1168549	423	20.06
Dadjan	DU10942	494499	1168550	424	15.07
Dadjan	DU10943	494525	1168549	424	28.76
Dadjan	DU10944	494551	1168552	424	16.41
Dadjan	DU10945	494580	1168548	424	5.61
Dadjan	DU10946	494596	1168550	425	4.25
Dadjan	DU10947	494620	1168542	425	2.94
Dadjan	DU10948	494639	1168552	426	5.92
Dadjan	DU10949	494673	1168561	427	5.66
Dadjan	DU10950	494714	1168556	426	6.1
Dadjan	DU10952	494729	1168548	430	4.42
Dadjan	DU10953	494751	1168551	431	6.67
Dadjan	DU10954	494778	1168549	431	5.92
Dadjan	DU10955	494808	1168549	432	5.01
Dadjan	DU10956	494827	1168552	433	8.3
Dadjan	DU10957	494856	1168553	436	5.37
Dadjan	DU10958	494876	1168550	436	5.36
Dadjan	DU10959	494906	1168553	436	4.66
Dadjan	DU10960	494938	1168544	436	5.34
Dadjan	DU10961	494975	1168541	436	3.4
Dadjan	DU10962	494401	1168497	418	67.78
Dadjan	DU10963	494372	1168516	418	12.42
Dadjan	DU10964	494342	1168499	417	9.59
Dadjan	DU10965	494321	1168502	418	12.04
Dadjan	DU10966	494291	1168496	417	284.52
Dadjan	DU10967	494279	1168503	417	15.03
Dadjan	DU10968	494253	1168503	416	9.17
Dadjan	DU10969	494238	1168495	416	7.72
Dadjan	DU10970	494199	1168499	417	7.77
Dadjan	DU10971	494177	1168492	418	18.6
Dadjan	DU10972	494144	1168491	418	10.9
Dadjan	DU10973	494124	1168504	419	29.62
Dadjan	DU10974	494102	1168505	420	8.13
Dadjan	DU10975	494074	1168501	421	9.43
Dadjan	DU10976	494047	1168492	421	10.21
Dadjan	DU10977	494032	1168501	421	8.16
Dadjan	DU10978	493998	1168498	420	3.82
Dadjan	DU10979	493973	1168501	419	3.39
Dadjan	DU10980	493958	1168502	420	3.25
Dadjan	DU10981	493903	1168448	417	1.41
Dadjan	DU10982	494371	1168571	417	11.67
Dadjan	DU10983	494437	1168558	416	18.08
Dadjan	DU10984	494413	1168551	416	16.62
Dadjan	DU10985	494425	1168497	423	14.42
Dadjan	DU10986	494454	1168501	425	10.89



For personal use only

Project	Sample ID	Easting	Northing	MRL	Au (ppb)
Dadjan	DU10987	494475	1168495	425	12.53
Dadjan	DU10988	494503	1168503	428	11.55
Dadjan	DU10989	494518	1168499	428	10.47
Dadjan	DU10990	494549	1168507	426	12.86
Dadjan	DU10991	494573	1168501	426	10.13
Dadjan	DU10992	494603	1168502	426	10.23
Dadjan	DU10993	494621	1168505	427	46.65
Dadjan	DU10994	494614	1168490	426	10.55
Dadjan	DU10995	494632	1168500	427	16.1
Dadjan	DU10996	494652	1168501	428	7.28
Dadjan	DU10997	494671	1168503	427	2.93
Dadjan	DU10998	494689	1168501	428	2.73
Dadjan	DU10999	494726	1168511	427	1.94
Dadjan	DU11000	494705	1168517	429	9.33
Dadjan	DU11002	494753	1168498	428	5.08
Dadjan	DU11003	494784	1168499	428	4.57
Dadjan	DU11004	494802	1168496	427	1.46
Dadjan	DU11005	494825	1168500	427	3.98
Dadjan	DU11006	494859	1168524	427	7.38
Dadjan	DU11007	494871	1168480	424	0.86
Dadjan	DU11008	494975	1168498	426	0.96
Dadjan	DU11009	494946	1168466	423	0.92
Dadjan	DU11010	494789	1168449	417	5.63
Dadjan	DU11011	494779	1168449	416	6.97
Dadjan	DU11012	494739	1168455	414	1.43
Dadjan	DU11013	494723	1168401	422	3.3
Dadjan	DU11014	494371	1168452	395	6.99
Dadjan	DU11015	494346	1168456	396	4.12
Dadjan	DU11016	494314	1168444	396	4.4
Dadjan	DU11017	494296	1168458	397	5.98
Dadjan	DU11018	494274	1168446	397	7.16
Dadjan	DU11019	494260	1168443	398	7.8
Dadjan	DU11020	494146	1168460	404	3.76
Dadjan	DU11021	494116	1168464	404	5.3
Dadjan	DU11022	494093	1168455	405	3.32
Dadjan	DU11023	494068	1168457	405	5.67
Dadjan	DU11024	494047	1168458	405	8.75
Dadjan	DU11025	494023	1168455	405	2.29
Dadjan	DU11026	494000	1168456	404	4.28
Dadjan	DU11027	493982	1168439	404	0.84
Dadjan	DU11028	494401	1168452	392	7.5
Dadjan	DU11029	494427	1168444	393	6.71
Dadjan	DU11030	494450	1168453	395	8.03
Dadjan	DU11031	494471	1168452	396	9.07
Dadjan	DU11032	494497	1168447	397	9.14
Dadjan	DU11033	494526	1168444	398	7.53
Dadjan	DU11034	494550	1168450	399	10.32
Dadjan	DU11035	494574	1168446	398	9.35
Dadjan	DU11036	494606	1168451	399	8.87
Dadjan	DU11037	494620	1168447	399	10.02
Dadjan	DU11038	494657	1168451	400	9.87
Dadjan	DU11039	494683	1168444	399	6.85
Dadjan	DU11040	494692	1168443	399	8.1
Dadjan	DU11041	494701	1168431	399	7.91
Dadjan	DU11042	494374	1168401	413	10.57



For personal use only

Project	Sample ID	Easting	Northing	MRL	Au (ppb)
Dadjan	DU11043	494350	1168402	413	6.5
Dadjan	DU11044	494334	1168404	413	10.4
Dadjan	DU11045	494303	1168400	414	5.75
Dadjan	DU11046	494270	1168402	416	8.57
Dadjan	DU11047	493966	1168407	426	6.32
Dadjan	DU11048	493950	1168402	427	4.06
Dadjan	DU11049	493922	1168405	427	2.37
Dadjan	DU11050	494400	1168404	421	10.32
Dadjan	DU11052	494420	1168398	422	6.37
Dadjan	DU11053	494450	1168401	424	5.71
Dadjan	DU11054	494455	1168393	425	6.92
Dadjan	DU11055	494476	1168401	427	14.46
Dadjan	DU11056	494500	1168420	427	7.67
Dadjan	DU11057	494502	1168399	426	7.01
Dadjan	DU11058	494521	1168396	404	11.8
Dadjan	DU11059	494552	1168398	405	6.47
Dadjan	DU11060	494574	1168401	405	6.77
Dadjan	DU11061	494602	1168406	407	5.59
Dadjan	DU11062	494622	1168400	407	18.05
Dadjan	DU11063	494651	1168401	408	11.19
Dadjan	DU11064	494677	1168402	408	6.02
Dadjan	DU11065	494701	1168398	407	18.47
Dadjan	DU11066	494734	1168392	408	10.51
Dadjan	DU11067	494746	1168392	408	6.24
Dadjan	DU11068	494776	1168406	409	9.48
Dadjan	DU11069	494791	1168384	408	5.31
Dadjan	DU11070	494799	1168403	408	10.91
Dadjan	DU11071	494836	1168396	409	6.37
Dadjan	DU11072	494828	1168383	409	6.81
Dadjan	DU11073	494841	1168388	410	10.53
Dadjan	DU11074	494853	1168395	410	2.51
Dadjan	DU11075	494877	1168399	411	8.03
Dadjan	DU11076	494918	1168410	412	7.13
Dadjan	DU11077	494951	1168392	412	3.64
Dadjan	DU11078	494975	1168400	412	4.18
Dadjan	DU11079	494401	1168352	414	7.37
Dadjan	DU11080	494377	1168342	413	10.55
Dadjan	DU11081	494353	1168351	413	10.28
Dadjan	DU11082	494336	1168349	414	9.23
Dadjan	DU11083	494301	1168350	415	15.51
Dadjan	DU11084	494276	1168357	416	10.19
Dadjan	DU11085	494150	1168363	419	3.9
Dadjan	DU11086	493931	1168361	426	3.94
Dadjan	DU11087	493910	1168360	426	5.22
Dadjan	DU11088	493868	1168336	426	4.48
Dadjan	DU11089	493789	1168354	424	1.73
Dadjan	DU11090	494423	1168349	412	8.49
Dadjan	DU11091	494447	1168343	412	19.03
Dadjan	DU11092	494478	1168363	413	5.59
Dadjan	DU11093	494499	1168355	413	5.37
Dadjan	DU11094	494518	1168339	411	7.74
Dadjan	DU11095	494531	1168337	412	9.04
Dadjan	DU11096	494529	1168344	419	13.51
Dadjan	DU11097	494554	1168352	404	6.13
Dadjan	DU11098	494575	1168349	404	7.55



For personal use only

Project	Sample ID	Easting	Northing	MRL	Au (ppb)
Dadjan	DU11099	494599	1168353	405	2.5
Dadjan	DU11100	494624	1168351	405	7.61
Dadjan	DU11102	494649	1168348	405	0.6
Dadjan	DU11103	494664	1168368	407	9.02
Dadjan	DU11104	494725	1168352	421	7.42
Dadjan	DU11105	494723	1168379	408	8.93
Dadjan	DU11106	494761	1168361	408	5.71
Dadjan	DU11107	494777	1168350	408	12.9
Dadjan	DU11108	494804	1168362	408	13.17
Dadjan	DU11109	494822	1168370	410	8.34
Dadjan	DU11110	494826	1168359	410	27.2
Dadjan	DU11111	494851	1168355	410	10.12
Dadjan	DU11112	494876	1168353	412	9.69
Dadjan	DU11113	494888	1168343	413	10.14
Dadjan	DU11114	494980	1168352	417	11.73
Dadjan	DU11115	494380	1168284	411	28.69
Dadjan	DU11116	494388	1168282	412	18.04
Dadjan	DU11117	494350	1168292	410	8.51
Dadjan	DU11118	494327	1168293	412	16.69
Dadjan	DU11119	494262	1168302	414	7.86
Dadjan	DU11120	493869	1168294	425	8.78
Dadjan	DU11121	493847	1168285	424	22.14
Dadjan	DU11122	493793	1168289	415	15.38
Dadjan	DU11123	494397	1168290	407	15.09
Dadjan	DU11124	494420	1168303	407	56.72
Dadjan	DU11125	494438	1168297	404	13.72
Dadjan	DU11126	494452	1168309	406	9.6
Dadjan	DU11127	494483	1168306	406	8.4
Dadjan	DU11128	494512	1168293	404	8.33
Dadjan	DU11129	494554	1168308	403	9.55
Dadjan	DU11130	494598	1168308	404	12.54
Dadjan	DU11131	494626	1168303	404	25.49
Dadjan	DU11132	494650	1168297	404	9.41
Dadjan	DU11133	494688	1168308	405	8.37
Dadjan	DU11134	494719	1168311	406	7.62
Dadjan	DU11135	494752	1168300	406	6.58
Dadjan	DU11136	494772	1168281	406	4.63
Dadjan	DU11137	494875	1168300	413	10.42
Dadjan	DU11138	494324	1168248	380	14.13
Dadjan	DU11139	494272	1168237	383	33.8
Dadjan	DU11140	494253	1168258	384	17.44
Dadjan	DU11141	494179	1168256	389	10.98
Dadjan	DU11142	493884	1168254	400	16.62
Dadjan	DU11143	493874	1168249	401	10.78
Dadjan	DU11144	493849	1168248	401	24.03
Dadjan	DU11145	493826	1168249	396	29.27
Dadjan	DU11146	493806	1168251	396	16.6
Dadjan	DU11147	493771	1168242	388	11.67
Dadjan	DU11148	493751	1168243	386	13.36
Dadjan	DU11149	494311	1168252	381	10.6
Dadjan	DU11150	494350	1168243	381	21.2
Dadjan	DU11152	494379	1168259	382	16.69
Dadjan	DU11153	494411	1168254	381	15.25
Dadjan	DU11154	494411	1168243	382	113.6
Dadjan	DU11155	494394	1168234	381	73.6



For personal use only

Project	Sample ID	Easting	Northing	MRL	Au (ppb)
Dadjan	DU11156	494428	1168251	382	14.74
Dadjan	DU11157	494429	1168237	383	10.65
Dadjan	DU11158	494401	1168271	383	13.43
Dadjan	DU11159	494386	1168270	382	389.97
Dadjan	DU11160	494451	1168263	377	11.84
Dadjan	DU11161	494479	1168241	378	10.38
Dadjan	DU11162	494600	1168234	380	8.5
Dadjan	DU11163	494746	1168265	384	8.4
Dadjan	DU11164	494811	1168253	387	7.66
Dadjan	DU11165	494831	1168238	389	2.84
Dadjan	DU11166	494429	1168268	379	18.42
Dadjan	DU11167	494451	1168278	379	13.01
Dadjan	DU11168	494443	1168280	380	281.37
Dadjan	DU11169	494428	1168290	378	28.07
Dadjan	DU11170	494371	1168228	380	23.04
Dadjan	DU11171	494363	1168232	412	16.64
Dadjan	DU11172	494347	1168261	383	34.92
Dadjan	DU11173	494288	1168197	422	12.8
Dadjan	DU11174	494255	1168227	424	61.26
Dadjan	DU11175	493928	1168188	439	20.97
Dadjan	DU11176	493923	1168171	439	24.84
Dadjan	DU11177	493917	1168153	440	28.99
Dadjan	DU11178	493910	1168139	439	72.57
Dadjan	DU11179	493913	1168167	440	16.34
Dadjan	DU11180	493903	1168186	440	30.43
Dadjan	DU11181	493896	1168205	440	15.78
Dadjan	DU11182	493884	1168197	440	38.67
Dadjan	DU11183	493859	1168158	442	9.54
Dadjan	DU11184	493823	1168199	440	37.87
Dadjan	DU11185	493799	1168196	435	24.33
Dadjan	DU11186	493790	1168184	435	79.25
Dadjan	DU11187	493775	1168198	431	49.35
Dadjan	DU11188	493783	1168163	438	39.49
Dadjan	DU11189	494328	1168191	382	12.48
Dadjan	DU11190	494348	1168199	384	256.14
Dadjan	DU11191	494384	1168202	385	13.4
Dadjan	DU11192	494391	1168206	386	11.34
Dadjan	DU11193	494421	1168202	387	46.1
Dadjan	DU11194	494449	1168199	388	8.67
Dadjan	DU11195	494470	1168201	389	9.83
Dadjan	DU11196	494501	1168194	390	13.3
Dadjan	DU11197	494536	1168174	392	12.54
Dadjan	DU11198	494539	1168202	393	13.51
Dadjan	DU11199	494630	1168214	395	11.48
Dadjan	DU11200	494708	1168187	399	12.92
Dadjan	DU11202	494895	1168190	406	10.74
Dadjan	DU11203	494277	1168702	410	18.91
Dadjan	DU11204	494251	1168706	410	23.44
Dadjan	DU11205	494187	1168713	411	12.55
Dadjan	DU11206	494177	1168697	411	13.64
Dadjan	DU11207	494147	1168695	411	23.97
Dadjan	DU11208	494126	1168699	411	101.41
Dadjan	DU11209	494104	1168697	411	33.8
Dadjan	DU11210	494078	1168701	411	16.17
Dadjan	DU11211	494054	1168692	411	572.76



Project	Sample ID	Easting	Northing	MRL	Au (ppb)
Dadjan	DU11212	494030	1168695	411	9.71
Dadjan	DU11213	493980	1168682	410	15
Dadjan	DU11214	493952	1168697	411	18.78
Dadjan	DU11215	493763	1168684	405	12.62
Dadjan	DU11216	494300	1168701	409	14.11
Dadjan	DU11217	494347	1168707	408	27.9
Dadjan	DU11218	494427	1168699	410	15.95
Dadjan	DU11219	494658	1168693	414	22.77
Dadjan	DU11220	494681	1168701	417	6.51
Dadjan	DU11221	494703	1168704	418	8.6
Dadjan	DU11222	494725	1168698	419	11.64
Dadjan	DU11223	494749	1168699	420	7.31
Dadjan	DU11224	494773	1168700	421	18.13
Dadjan	DU11225	494799	1168703	425	6.58
Dadjan	DU11226	494829	1168695	427	12.29
Dadjan	DU11227	494851	1168703	430	12.96
Dadjan	DU11228	494875	1168700	432	10.32
Dadjan	DU11229	494907	1168699	433	10.3
Dadjan	DU11230	494927	1168696	432	9.35
Dadjan	DU11231	494950	1168692	432	6.88
Dadjan	DU11232	494834	1169632	392	80.45

For personal use only



JORC 2012 Table 1 Section 1 and Section 2

Section 1: Sampling Techniques and Data – Exploration Results

Criteria	JORC Code Explanation	Commentary
Sampling Technique	<p>Nature and quality of sampling (eg cut channels, random chips, or specific specialised industry standard measurement tools appropriate to the minerals under investigation, such as downhole gamma sondes, or handheld XRF instruments, etc). These examples should not be taken as limiting the broad meaning of sampling Include reference to measures taken to ensure sample representivity and the appropriate calibration of any measurement tools or systems used. Aspects of the determination of mineralisation that are Material to the Public Report.</p> <p>In cases where 'industry standard' work has been done this would be relatively simple (eg 'reverse circulation drilling was used to obtain 1 m samples from which 3 kg was pulverised to produce a 30 g charge for fire assay'). In other cases more explanation may be required, such as where there is coarse gold that has inherent sampling problems. Unusual commodities or mineralisation types (eg submarine nodules) may warrant disclosure of detailed information.</p>	<p>Soil samples were collected on a regular grids. Samples were collected in-situ and are generally 2 kg in weight.</p>
Drilling	<p>Drill type (eg core, reverse circulation, open-hole hammer, rotary air blast, auger, Bangka, sonic, etc) and details (eg core diameter, triple or standard tube, depth of diamond tails, face-sampling bit or other type, whether core is oriented and if so, by what method, etc).</p>	<p>There is no new drilling results reported in this announcement.</p>
Drill Sample Recovery	<p>Method of recording and assessing core and chip sample recoveries and results assessed.</p> <p>Measures taken to maximise sample recovery and ensure representative nature of the samples.</p> <p>Whether a relationship exists between sample recovery and grade and whether sample bias may have occurred due to preferential loss/gain of fine/coarse material.</p>	<p>There is no new drilling results reported in this announcement.</p>
Logging	<p>Whether core and chip samples have been geologically and geotechnical logged to a level of detail to support appropriate Mineral Resource estimation, mining studies and metallurgical studies.</p> <p>Whether logging is qualitative or quantitative in nature. Core (or costean/Trench, channel, etc) photography.</p> <p>The total length and percentage of the relevant intersections logged.</p>	<p>Soil samples were geologically logged by lithology type, and any other relevant details were also recorded.</p> <p>Logging is both qualitative and quantitative in nature.</p>
Sub-Sampling Technique and Sample Preparation	<p>If core, whether cut or sawn and whether quarter, half or all core taken. If non-core, whether riffled, tube sampled, rotary split, etc and whether sampled wet or dry.</p> <p>For all sample types, the nature, quality and appropriateness of the sample preparation technique.</p> <p>Quality control procedures adopted for all sub-sampling stages to maximise representivity of samples.</p> <p>Measures taken to ensure that the sampling is representative of the in-situ material collected,</p>	<p>Soil is dug down to 4 to 50 cm. Samples are sieved to collect 2-3kg in plastic bags with individual tags (identifier numbers) and dispatched to the lab for assays.</p> <p>Trench and soil samples were submitted for assay. These samples were first dried at 110°C and then whole crushed and with a 50g sub-sample taken for assay.</p> <p>Field duplicates were collected every 50 samples as part of the soil sampling program.</p>

For personal use only



For personal use only

	including for instance results for field duplicate/second-half sampling. Whether sample sizes are appropriate to the grain size of the material being sampled.	
Quality of Assay Data and Laboratory Tests	<p>The nature, quality and appropriateness of the assaying and laboratory procedures used and whether the technique is considered partial or total.</p> <p>For geophysical tools, spectrometers, handheld XRF instruments, etc, the parameters used in determining the analysis including instrument make and model, reading times, calibrations factors applied and their derivation, etc.</p> <p>Nature of quality control procedures adopted (eg standards, blanks, duplicates, external laboratory checks) and whether acceptable levels of accuracy (ie lack of bias) and precision have been established.</p>	<p>Analysis was conducted by Proslabs in Kouroussa, Guinea, using a standard Fire-Assay 50 followed by ICP-MS method for gold with a upper detection limit of 1000 ppb.</p> <p>Field duplicates have been collected (in the soil sampling program).</p> <p>1 in 50 samples were repeated by the laboratory and blanks and standards were used (by the lab) at a rate of 1 in 50 samples.</p> <p>Lab repeats indicate a moderate level of correlation</p>
Verification of Sampling and Assaying	<p>The verification of significant intersections by either independent or alternative company personnel.</p> <p>The use of twinned holes.</p> <p>Documentation of primary data, data entry procedures, data verification, data storage (physical and electronic) protocols.</p> <p>Discuss any adjustment to assay data</p>	<p>No verification of significant intersections by independent persons has been undertaken.</p> <p>There are no twin holes.</p> <p>All assay results in the database have been checked against the original laboratory assay certificates (PDF's)</p> <p>There has been no adjustment to assay data.</p>
Location of Data points	<p>Accuracy and quality of surveys used to locate drill holes (collar and down- hole surveys), trenches, mine workings and other locations used in Mineral Resource estimation.</p> <p>Specification of the grid system used Quality and adequacy of topographic control</p>	<p>The coordinate system used is WGS84/UTM zone 29N.</p> <p>A handheld Garmin GPS was used to record soil sample co-ordinates.</p>
Data Spacing and Distribution	<p>Data spacing for reporting of Exploration Results</p> <p>Whether the data spacing and distribution is sufficient to establish the degree of geological and grade continuity appropriate for the Mineral Resource and Ore Reserve estimation procedure(s) and classifications applied.</p> <p>Whether sample compositing has been applied</p>	<p>Soil samples were collected on a variety of grids which included:</p> <ul style="list-style-type: none"> • 50 m by 100 m grid • 100 m by 400 m grid • 100 m by 200 m grid • 100 m by 500, 600 or 700m spaced lines <p>There is no Mineral Resource and Ore Reserve estimation reported here.</p>
Orientation of Data in Relation to Geological Structure	<p>Whether the orientation of sampling achieves unbiased sampling of possible structures and the extent to which this is known, considering the deposit type.</p> <p>If the relationship between the drilling orientation and the orientation of key mineralised structures is considered to have introduced a sampling bias, this should be assessed and reported if material.</p>	<p>It is not known whether the orientation of the soil sampling has created a bias at this stage.</p>
Sample Security	<p>The measures taken to ensure sample security</p>	<p>All samples taken were hand delivered to the laboratory in Kouroussa. The laboratory checked the samples delivered against the sample dispatch sheet and verified this was correct before commencing analysis.</p>
Audits or reviews.	<p>The results of any audits or reviews of sampling techniques and data</p>	<p>No external audits have been done.</p>
Section 2 Reporting of Exploration Results		



For personal use only

<p>Mineral Tenement and Land Tenure Status</p>	<p>Type, reference name/number, location and ownership including agreements or material issues with third parties such as joint ventures, partnerships, overriding royalties, native title interests, historical sites, wilderness or national park and environmental settings. The security of the tenure held at the time of reporting along with any known impediments to obtaining a licence to operate in the area.</p>	<p>The Siguiri Project comprises 14 tenements which range from reconnaissance applications, granted reconnaissance permits and granted exploration permits (see Table 1). Reconnaissance permits allow prospecting and non-ground disturbing activity such as surface sampling. Exploration permits allow ground disturbing activity such as auger or RC drilling.</p> <p>Reconnaissance permits can be converted to exploration permits upon justification of results. All permits are valid and registered in the Guinea mining cadastre system.</p> <p>Timbakouna is a Reconnaissance Authorisation which was approved for renewal on the 27th August 2025. The application for renewal contained within a work program which included an RC drill program. The work program was approved as with the renewal.</p> <p>The Angex agreement with Wassolon Mining Group is detailed in previous reports</p>
<p>Exploration Done by Other Parties</p>	<p>Acknowledgment and appraisal of exploration by other parties.</p>	<p>There has been very little exploration conducted within the tenement areas. The only historic exploration of note is RC drilling in the Timbakouna tenement and soil sampling in the Kantoumanina. The results of this are discussed in previous reports.</p> <p>There is no known exploration in the Dadjan and Tole permits.</p>
<p>Geology</p>	<p>Deposit type, geological setting and style of mineralisation.</p>	<p>The Siguiri Basin projects are situated in rocks of the Birimian Supergroup which consists of meta-sediments (shale, greywacke, cherts) and mafic to intermediate volcanics variably intruded by felsic intrusives such as granite and tonalite.</p> <p>The basin has been multiply deformed with basin wide NW and NE trending faults/shears. Orogenic gold mineralisation is typically hosted within these structural corridors, generally in close proximity to the felsic intrusives which are postulated to be the heat and fluid source for gold mineralisation.</p> <p>Gold mineralisation is typically quartz vein hosted with pyrite, pyrrhotite and hematite and associated sericite and chlorite alteration the main accessory minerals.</p> <p>The Siguiri Basin is deeply weathered with a strong laterite surface developed with nodular to pisolitic hard cap which is a host to remobilised gold mineralisation and the target for artisanal gold miners.</p>
<p>Drill Hole Information</p>	<p>A summary of all information material to the understanding of the exploration results including a tabulation of the following information for all Material drill holes:</p> <ul style="list-style-type: none"> • easting and northing of the drill hole collar • elevation or RL (Reduced Level – elevation above sea level in metres) of the drill hole collar • dip and azimuth of the hole • down hole length and interception depth • hole length • If the exclusion of this information is justified on the basis that the information is not Material and this exclusion does not detract from the understanding of the report, the 	<p>There is no new drilling results reported in this announcement.</p>



For personal use only

	Competent Person should clearly explain why this is the case.	
Data Aggregation Methods	<p>In reporting Exploration Results, weighting averaging techniques, maximum and/or minimum grade truncations (eg cutting of high grades) and cut-off grades are usually Material and should be stated.</p> <p>Where aggregate intercepts incorporate short lengths of high grade results and longer lengths of low grade results, the procedure used for such aggregation should be stated and some typical examples of such aggregations should be shown in detail.</p> <p>The assumptions used for any reporting of metal equivalent values should be clearly stated.</p>	<p>No data aggregation methods have been applied to soil, rock chip or dump samples. All results received have been reported as is.</p> <p>Data aggregation of trench samples are length weighted.</p>
Relationship Between Mineralisation Widths and Intercept Lengths	<p>These relationships are particularly important in the reporting of Exploration Results</p> <p>If the geometry of the mineralisation with respect to the drill hole angle is known, its nature should be reported. If it is not known and only the down hole lengths are reported, there should be a clear statement to this effect (eg 'down hole length, true width not known').</p>	<p>No assumption of true widths of the mineralised zones is made in reported results and assays should not be interpreted to be representative sampling of the reported interval – true width not known.</p>
Diagrams	<p>Appropriate maps and sections (with scales) and tabulations of intercepts should be included for any significant discovery being reported. These should include, but not be limited to a plan view of drill hole collar locations and appropriate sectional views.</p>	<p>Diagrams including plan maps with sample results are provided with this report.</p>
Balanced Reporting	<p>Where comprehensive reporting of all Exploration Results is not practicable, representative reporting of both low and high grades and/or widths should be practiced to avoid misleading reporting of Exploration Results.</p>	<p>The company believes this announcement is a balanced report, and that all material information has been reported.</p>
Other Substantive Exploration Data	<p>Other exploration data, if meaningful and material, should be reported including (but not limited to): geological observations; geophysical survey results; geochemical survey results; bulk samples – size and method of treatment; metallurgical test results; bulk density, groundwater, geotechnical and rock characteristics; potential deleterious or contaminating substances.</p>	<p>All substantive historical exploration data has been discussed in previous reports by the company.</p>
Further Work	<p>The nature and scale of planned further work (eg tests for lateral extensions or large scale step out drilling).</p> <p>Diagrams clearly highlighting the areas of possible extensions, including the main geological interpretations and future drilling areas, provided this information is not commercially sensitive.</p>	<p>Planned further work includes RC drilling and power auger drilling.</p>