

ASX Announcement 20 October 2025

# Exceptional High-Grade Gold Identified in Historical Data review at Cosmopolitan Mine

## Highlights

- Review of historic underground channel sampling data from the Cosmopolitan Gold Mine has identified extraordinary remnant high-grade mineralisation
- A dataset of 969 located samples (40%) within GoldArc tenements M40/02 and M40/342 returned an average grade of 38.38 g/t Au over an average width of 1.07m
- Analysis of the sample data demonstrates significant high-grade mineralisation:
  - 68 samples returned assays above 100 g/t Au
  - 227 samples returned assays above 50 g/t Au and
  - 476 samples returned assays above 20 g/t Au
- Numerous standout results highlight the significant potential remaining within the mine's developed areas, including:
  - **0.23m at 936.46 g/t Au** Level 4 South Drive at 338.46RL
  - **6.1m at 124.62 g/t Au** at Level 4 South Drive at 338.46RL
  - **4.27m at 119.84 g/t Au** at Level 4 North Drive at 338.46RL
  - **2.13m at 221.37 g/t Au** at Level 2-3 Winze at 370.41mRL
  - **1.22m at 273.99 g/t Au** at Level 2 North Drive at 384.04RL
  - **1.52m at 189.86 g/t Au** at Level 2 North Drive at 384.04RL
  - **0.38m at 195.0 g/t Au** at Level 0-1 Stope Cumberland 422.29RL
- The historic Cosmopolitan Gold Mine produced ~360k ounces of gold at 15 g/t Au from surface to a depth of 320 metres

**GoldArc Resources Limited (ASX:GA8) ('GoldArc' or 'the Company')** is pleased to announce the outstanding results from a detailed review and compilation of historical underground channel sampling data from the Cosmopolitan Gold Mine, located within the Company's Leonora South Gold Project.

The review has confirmed the presence of extraordinary high-grade gold mineralisation within previously mined areas, challenging the assumption that the deposit was exhausted. The data provides compelling targets for near-term drilling aimed at defining a JORC-compliant mineral resource.

**GoldArc Resources Managing Director, Paul Stephen commented:** "The results from this historical review are extremely exciting and transform our understanding of the Cosmopolitan Gold Mine. The sheer number of outstanding samples suggest that substantial high-grade gold mineralisation was left behind in the historical workings. With projects of this era (1890-1922) needing 30g/t to make money there is a huge amount of up-side in remnant

**ASX:GA8**

GoldArc Resources

goldarcres.com.au

104 Colin Street  
West Perth WA 6005

+61 8 9420 8208



**ASX:GA8**

GoldArc Resources

goldarcres.com.au

104 Colin Street  
West Perth WA 6005

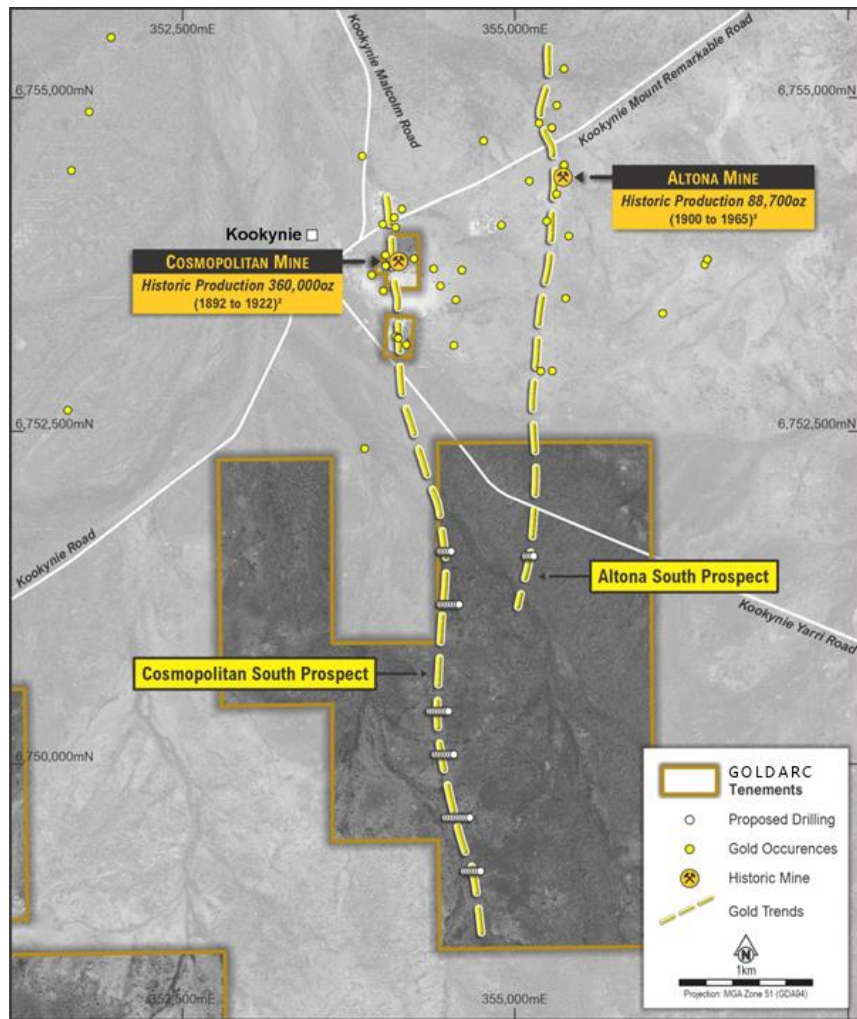
+618 9420 8208



mining coupled with mining of virgin areas that are no doubt left due to circumstances and practicalities of the day.

This data provides a clear path forward, allowing us to rapidly advance the project by targeting known high-grade zones with modern drilling techniques. Our strategy is to systematically drill these remnant areas and untested parallel lodes with the objective of defining a high-grade, JORC-compliant mineral resource estimates.

Combined with our recent regional work, which has confirmed the prospectivity of the geological structures extending south from the mine, we are building a compelling case for a significant system at Cosmopolitan. We look forward to commencing drilling to validate these historical results and unlock the full potential of this exceptional asset."



**Figure 1 - Location of Cosmopolitan Mine with respect to recent aircore drilling at Cosmopolitan South and Altona South Prospects. Refer to 3<sup>rd</sup> October 2025 announcement**

The Company has compiled and validated a historical dataset sourced from the Department of Energy, Mines, Industry Regulation and Safety (DEMIRS) WAMEX System, originally reported by Metalicity Limited (ASX:MCT) on 9 June 2020. Note - the word "historic" refers to data published by the Operator of The Cosmopolitan Gold Mine on file at the GSWA dated 1905.

The dataset comprises 2,438 channel samples. Of these, 969 samples have been spatially located within GoldArc's tenements M40/02 and M40/342. These samples, taken from drives, stopped, and winzes across multiple levels of the historical mines, demonstrate an average sample width of 1.07m and a length-weighted average grade of 38.38 g/t Au.

A summary of the most significant intercepts is provided in Table 1 below. The full list of results is available in Appendix 2.

**Table 1 – Significant Historical Channel Sample Intercepts**

Width (m)	Gold Grade (g/t Au)	Location	RL (m)
0.23	936.46	Level 4 South Drive	338.46
6.10	124.62	Level 4 South Drive	338.46
4.27	119.84	Level 4 North Drive	338.46
2.13	221.37	Level 2-3 Winze	370.41
1.22	273.99	Level 2 North Drive	384.04
1.52	189.86	Level 2 North Drive	384.04
0.38	195.00	Level 0-1 Stope	422.29

**(Note: RL refers to Reduced Level, a measure of elevation relative to a datum)**

**ASX:GA8**

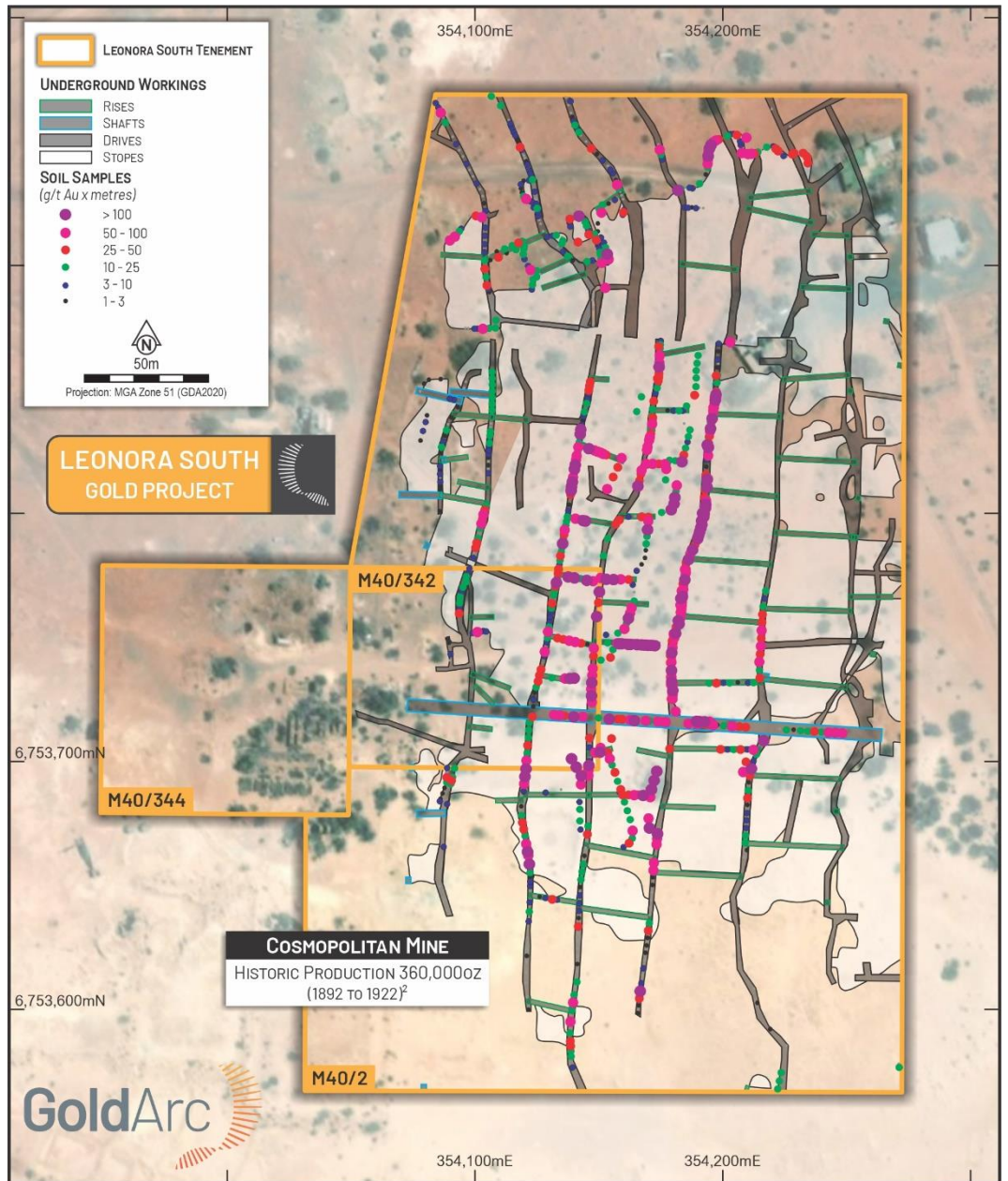
**GoldArc Resources**

goldarcres.com.au

104 Colin Street  
West Perth WA 6005

+61 8 9420 8208





**Figure 2 – Plan of Cosmopolitan Channel Sampling Results and Workings**

**ASX:GA8**

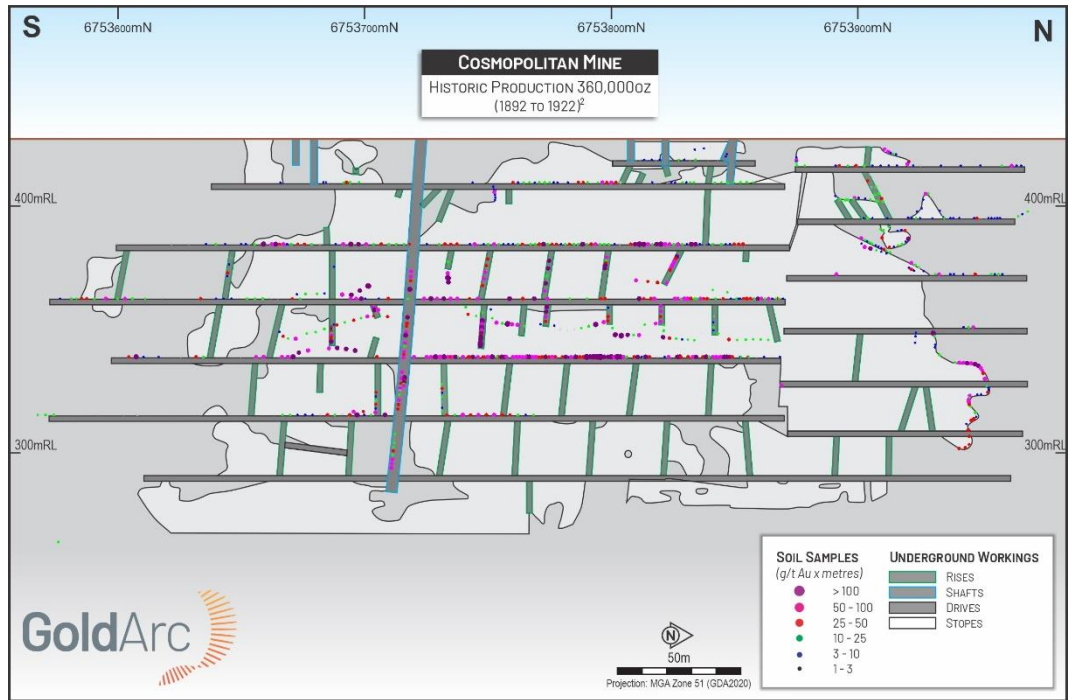
**GoldArc Resources**

goldarcres.com.au

104 Colin Street  
West Perth WA 6005

+61 8 9420 8208





**Figure 3 – Long-section of Cosmopolitan Channel Sampling Results and Workings**

**Next Steps**

- GoldArc next steps would be to carryout RC and diamond drilling programs of the remnant Cosmopolitan mineralisation along the strike and down dip with the goal of defining a maiden Mineral Resource Estimate.
- GoldArc intend to use capital to develop current resources including the Cosmopolitan Gold Mine.

This announcement has been authorised for release by the Board of Directors.

**- ENDS -**

**Investors**

**Paul Stephen**  
 Managing Director  
 GoldArc Resources Limited  
[info@goldarces.com.au](mailto:info@goldarces.com.au)

**Investor Relations**

**Madeline Howson**  
 Investor Relations  
 Discover Investor Relations  
[madeline@discover.com.au](mailto:madeline@discover.com.au)

**ASX:GA8**

**GoldArc Resources**

goldarces.com.au

104 Colin Street  
 West Perth WA 6005

+61 8 9420 8208



## Forward Looking Statements Disclaimer

This announcement contains certain “forward-looking statements” and comments about future matters. Forward-looking statements can generally be identified by the use of forward-looking words such as, “expect”, “anticipate”, “likely”, “intend”, “should”, “estimate”, “target”, “outlook”, and other similar expressions and include, but are not limited to, indications of, and guidance or outlook on, future events, growth opportunities, exploration activities or the financial position or performance of the Company. You are cautioned not to place undue reliance on forward-looking statements. Any such statements, opinions and estimates in this release speak only as of the date hereof, are preliminary views and are based on assumptions and contingencies subject to change without notice. Forward-looking statements are provided as a general guide only. There can be no assurance that actual outcomes will not differ materially from these forward-looking statements. Any such forward-looking statement also inherently involves known and unknown risks, uncertainties and other factors and may involve significant elements of subjective judgement and assumptions that may cause actual results, performance and achievements to differ. Except as required by law the Company undertakes no obligation to finalise, check, supplement, revise or update forward-looking statements in the future, regardless of whether new information, future events or results or other factors affect the information contained in this announcement.

## Competent Persons Statements

The information in this report as it relates to exploration results and geology is based on, and fairly represents, information and supporting documentation that was compiled by Mr. Ziggy Lubieniecki, who is a director, consultant and shareholder of the Company. Mr. Lubieniecki has sufficient experience which is relevant to the styles of mineralisation and types of deposit under consideration and to the activities which he is undertaking to qualify as a Competent Person as defined in the 2012 Edition of the Australasian Code for Reporting of Exploration Results, Mineral Resources and Ore Reserves'. Mr. Lubieniecki consents to the inclusion in the report of the matters based on the information in the form and context in which it appears.

Historic exploration data noted in this announcement has been compiled, however, the Competent Persons has not done sufficient work to disclose historical results in accordance with JORC 2012 reporting guidelines.

## References:

Wiltshire, P. 2003, “Cosmopolitan Mine Project M40/002, M40/162, Annual Report 2003 for the year ending 30/11/2003”, WAMEX Reference Number A067918.

Wiltshire, P. 2004, “Cosmopolitan Project, M40/002, M40/162A, North Coolgardie mineral field, Nigeria Area, Annual report 2004, for year ending 30/11/04.”, WAMEX Reference Number A069774.

ASX Announcement by Metalicity Limited dated 9 June 2020 “Extremely High-Grade Historical Channel Samples Cosmopolitan.

The information in this announcement that relates to the Orion-Sapphire Mineral Resources is contained in the ASX announcement released on 28 May 2024. The information in this announcement that relates to the gold Mineral Resources for the Mt Stirling Project is contained in the ASX announcements released on 25 February 2019, 29 January 2020 and 5 September 2022. The Company confirms that it is not aware of any new information or data that materially affects the information in the relevant market announcements, and that all material assumptions and technical parameters underpinning the estimates in the relevant announcement continue to apply and have not materially changed. that the Company confirms that the form and context in which the Competent Persons findings are presented have not been materially modified from the original announcements.

**ASX:GA8**

**GoldArc Resources**

goldarcres.com.au

104 Colin Street  
West Perth WA 6005

+61 8 9420 8208



## Appendix 1 – JORC Code, 2012 Edition – Table 1

### Section 1 – Sampling Techniques and Data

(Criteria in this section apply to all succeeding sections.)

Criteria	Commentary
<b>Sampling techniques</b>	<ul style="list-style-type: none"> <li>Historical reports state the data discussed in the announcement is channel sampling whilst the mine was in operation.</li> <li>The grades reported correlate well with stated production records and further correlate that the structure is mineralised outside of previously developed areas with drilling and channel sampling performed by Metalicity as reported in ASX Announcements "Metalicity Confirms Mineralisation" dated 31 July 2019 and "Extremely High-Gold From Historical Underground Channel Sampling At the Cosmopolitan Underground Gold Mine" dated 9 June 2020.</li> <li>Metalicity was unaware of any QAQC protocols that were in place at the time of the channel sampling between 1896 and 1922. However, within the datasets, there are repeats or duplicates stated to have been taken at the time, these correlate to the primary sample that was taken reasonably well.</li> </ul>
<b>Drilling techniques</b>	<ul style="list-style-type: none"> <li>No drilling is discussed. Channel samples were described in historical reports as perpendicular across the lode. Size and weights of the samples were not recorded.</li> <li>The channel sampling was conducted throughout the historical Cosmopolitan Gold Mine in 1905.</li> </ul>
<b>Drill sample recovery</b>	<ul style="list-style-type: none"> <li>No drilling is discussed in this announcement.</li> </ul>
<b>Logging</b>	<ul style="list-style-type: none"> <li>Channel samples from historical workings were not geologically logged.</li> </ul>
<b>Sub-sampling techniques and sample preparation</b>	<ul style="list-style-type: none"> <li>We are not aware of any sample preparation techniques employed.</li> </ul>
<b>Quality of assay data and laboratory tests</b>	<ul style="list-style-type: none"> <li>It is believed that a cupellation method was employed to determine the gold grade of the channel samples, however that is not known for certain and an extrapolation from other areas and the method for determining gold grades assumed. Relate to announcement "Metalicity Confirms Mineralisation" dated 31 July 2019.</li> <li>The data presented is to support modern day exploration efforts and confirm trends within mineralisation observed at the Cosmopolitan Gold Mine. This data at the time in 1905 is interpreted to have been used as their "grade control" at what was one of the largest gold mines in Western Australia at the time.</li> <li>Whilst the information presented is historical in nature and cannot be verified to JORC 2012 guidelines, it does provide a vector to direct modern-mineralisation within this project area.</li> </ul>
<b>Verification of sampling and assaying</b>	<ul style="list-style-type: none"> <li>No umpire analysis has been performed.</li> <li>No adjustment beyond conversion from ounces and pennyweights to grams was completed.</li> </ul>
<b>Location of data points</b>	<ul style="list-style-type: none"> <li>The location of the data points was digitised by Metalicity from historical maps with the reference point, that has been verified via confirming the location of digitised main portal. It is assumed that the digitisation is fair and accurate representation of the underground workings detailed in the dxf files obtained from DMIRS WAMEX System.</li> </ul>
<b>Data spacing and distribution</b>	<ul style="list-style-type: none"> <li>The channel samples were completed on approximately 5 metre spacing along drives and stopes.</li> <li>The data is not sufficient to be used in a mineral estimation; however, it can be used to vector mineralisation and plan further work.</li> </ul>
<b>Orientation of data in relation to geological structure</b>	<ul style="list-style-type: none"> <li>Based on reports and maps open to the public, it is believed that the channel sampling was performed perpendicular to the vein.</li> </ul>
<b>Sample security</b>	<ul style="list-style-type: none"> <li>As this is historical data, the samples security cannot be verified.</li> </ul>
<b>Audits or reviews</b>	<ul style="list-style-type: none"> <li>No external audit of the 1905 results is possible.</li> </ul>

**ASX:GA8**

GoldArc Resources

goldarcres.com.au

104 Colin Street  
West Perth WA 6005

+61 8 9420 8208



## Section 2 – Reporting of Exploration Results

(Criteria in this section apply to all succeeding sections)

Criteria	Commentary
<b>Mineral tenement and land tenure status</b>	<ul style="list-style-type: none"> <li>GoldArc hold the tenure in question.</li> <li>An agreement between Asra Minerals and Ziggy Wolski has recently been signed whereby Asra can earn 70%.</li> <li>Historical Drilling Data Review was carried on valid Western Australian Mining Licenses 100% owned by Ziggy Wolski and the leases are in good standing.</li> <li>The Niagara Gold Project in the Kookynie Gold District of Western Australia comprises eight granted Mining Leases (M40/02, M40/08, M40/26, M40/56, M40/117, M40/192, M40/342, M40/344), two granted Exploration Licenses (E40/396 and E40/397), three pending Exploration Licenses (E40/413, E40/415, E40/416), and nine pending Prospecting Licenses (P40/1533, P40/1546, P40/1547, P40/1548, P40/1549, P40/1550, P40/1553, P40/1556, P40/1557). The combined area of the project is approximately 38, 400 ha.</li> <li>There is a 2% Royalty to a third party for minerals on these licenses.</li> <li>There are no known impediments to obtaining a license to operate.</li> </ul>
<b>Exploration done by other parties</b>	<ul style="list-style-type: none"> <li>Niagara Gold Tenements have undergone multiple drill programs over a protracted period focusing on areas around the historic prospects of Cosmopolitan, Diamantina, Orion, Sapphire, Gladstone, Missing Link, Eclipse, OK, Justice, Challenge, Niagara, Latrobe, and W.E.G. This drilling has already resulted in modern (post 1980) mining campaigns at Diamantina, Orion, and Sapphire. Numerous significant intercepts occur outside of mined areas.</li> <li>1982 Australian Anglo-American drilling at Orion Sapphire.</li> <li>1981-1985 Mogul Mining</li> <li>1982-1987 BP Minerals, Minplex Resources and Spargos Exploration</li> <li>1984-1989 BP Minerals.</li> <li>1982-1990 BP Minerals and Hill Minerals and Hillman Gold mines explored the Sapphire workings with RAB and RC drilling.</li> <li>1990-2000 Money Mining drilled the Diamantina and Cosmopolitan mineralization CRC and DRC drillholes.</li> <li>1993-1994 Horizon Mining Niagara Project. RC and Diamond drilling for a resource definition at Orion and Sapphire.</li> <li>2000-2010 Diamond ventures Kookynie Resources and Barmenco drilled Diamantina and Cosmopolitan. Kookynie Resources drilled extensions at Sapphire and Orion.</li> <li>2010-2020 Nex Metals from 2009-2013, sold to A&amp;C Mining Investments in 2014. A&amp;C completed Aircore and RC drilling.</li> </ul>
<b>Geology</b>	<ul style="list-style-type: none"> <li>The Kookynie Gold Project is located in the central part of the Norseman-Wiluna belt of the Eastern Goldfields terrane. Host rocks in the region are primarily metasedimentary and metavolcanic lithologies of the Melita greenstones.</li> <li>Gold mineralisation is developed within structures encompassing a range of orientations and deformation styles.</li> <li>At the Gladstone, Orion and Sapphire deposits, gold mineralisation is controlled by a quartz vein system which trends east-northeast across an iron rich dolerite/gabbro host rock (the Niagara Gabbro Complex). The system dips to the south at between 50° and 80°. The mineralised structure, which is generally 2 to 5 metres wide, appears to be brittle with only minor shearing and alteration of the host gabbro.</li> </ul>
<b>Drill hole Information</b>	<ul style="list-style-type: none"> <li>No New drill holes are being discussed.</li> </ul>
<b>Data aggregation methods</b>	<ul style="list-style-type: none"> <li>No metal equivalent values have been used or reported.</li> <li>No Bottom or top cuts were applied.</li> <li>Refer to "Extremely High-Gold From Historical Underground Channel Sampling At the Cosmopolitan Underground Gold Mine" dated 9 June 2020.</li> </ul>
<b>Relationship between mineralisation widths and intercept lengths</b>	<ul style="list-style-type: none"> <li>Refer to "Extremely High-Gold From Historical Underground Channel Sampling At the Cosmopolitan Underground Gold Mine" dated 9 June 2020.</li> </ul>
<b>Diagrams</b>	<ul style="list-style-type: none"> <li>Suitable figures have been included in the body of the announcement.</li> </ul>

**ASX:GA8**

GoldArc Resources

goldarcres.com.au

104 Colin Street  
West Perth WA 6005

+61 8 9420 8208





**ASX:GA8**

**GoldArc Resources**

goldarcres.com.au

104 Colin Street  
West Perth WA 6005

+618 9420 8208



Criteria	Commentary
<b>Balanced reporting</b>	<ul style="list-style-type: none"><li>Refer to results in Appendix 2.</li><li>Refer to "Extremely High-Gold From Historical Underground Channel Sampling At the Cosmopolitan Underground Gold Mine" dated 9 June 2020.</li></ul>
<b>Other substantive exploration data</b>	<ul style="list-style-type: none"><li>Refer to "Extremely High-Gold From Historical Underground Channel Sampling At the Cosmopolitan Underground Gold Mine" dated 9 June 2020.</li></ul>
<b>Further work</b>	<ul style="list-style-type: none"><li>Follow up field work is planned.</li></ul>

## Appendix 2 – Cosmo Underground Sampling within GoldArc Tenements

PAGE	Pannel	GDA East	GDA North	RL	Width (m)	g/t Au	Description	Grams* Width
11	1	354,086	6,753,801	418.16	0.30	4.21	Level 1 West branch (North)	1.26
11	1	354,086	6,753,810	418.16	0.76	1.98	Level 1 West branch (North)	1.50
11	1	354,086	6,753,812	418.16	0.61	1.98	Level 1 West branch (North)	1.21
11	1	354,086	6,753,813	418.16	0.61	7.02	Level 1 West branch (North)	4.28
11	1	354,086	6,753,815	418.16	0.46	0.19	Level 1 West branch (North)	0.09
11	1	354,086	6,753,816	418.16	0.76	4.97	Level 1 West branch (North)	3.78
11	1	354,086	6,753,818	418.16	0.61	4.02	Level 1 West branch (North)	2.45
11	1	354,086	6,753,819	418.16	0.61	6	Level 1 West branch (North)	3.66
11	1	354,086	6,753,825	418.16	0.91	2.3	Level 1 West branch (North)	2.09
11	1	354,087	6,753,827	418.16	0.69	14.92	Level 1 West branch (North)	10.29
11	1	354,087	6,753,829	418.16	0.76	5.74	Level 1 West branch (North)	4.36
11	1	354,088	6,753,832	418.16	0.61	3.44	Level 1 West branch (North)	2.10
11	1	354,089	6,753,834	418.16	0.61	26.02	Level 1 West branch (North)	15.87
11	1	354,089	6,753,836	418.16	0.46	0.77	Level 1 West branch (North)	0.35
11	1	354,091	6,753,839	418.16	0.91	1.53	Level 1 West branch (North)	1.39
11	1	354,093	6,753,843	418.16	0.20	13.01	Level 1 West branch (North)	2.60
11	1	354,096	6,753,851	418.16	0.15	0.19	Level 1 West branch (North)	0.03
11	1	354,097	6,753,853	418.16	0.20	0.77	Level 1 West branch (North)	0.15
11	1	354,092	6,753,846	419.44	0.38	11.48	Level 1 West branch (North) Shaft	4.36
11	1	354,090	6,753,847	420.4	0.46	7.27	Level 1 West branch (North) Shaft	3.34
11	1	354,086	6,753,854	422.01	0.41	6.12	Level 1 West branch (North) Stope	2.51
11	1	354,082	6,753,854	424.6	0.76	3.06	Level 1 West branch (North) Stope	2.33
11	1	354,080	6,753,853	425.7	1.07	2.3	Level 1 West branch (North) Stope	2.46
11	1	354,078	6,753,849	426.84	0.61	0.38	Level 1 West branch (North) Shaft	0.23
11	1	354,081	6,753,840	423.17	0.81	3.44	Level 1 West branch (North) Stope	2.79
11	1	354,080	6,753,837	422.77	0.86	5.36	Level 1 West branch (North) Stope	4.61
11	1	354,079	6,753,834	422.29	0.84	4.59	Level 1 West branch (North) Stope	3.86
11	1	354,078	6,753,830	421.97	0.76	3.06	Level 1 West branch (North) Stope	2.33
11	1	354,089	6,753,750	409.01	0.15	8.42	Level 1 West branch	1.26
11	1	354,090	6,753,748	409.01	0.38	6.12	Level 1 West branch	2.33
11	1	354,090	6,753,744	409.01	0.25	35.2	Level 1 West branch	8.80
11	1	354,090	6,753,741	409.01	0.15	2.68	Level 1 West branch	0.40
11	1	354,086	6,753,650	409.01	0.91	1.02	Level 1 South Drive	0.93
11	1	354,087	6,753,666	409.01	1.22	4.97	Level 1 South Drive	6.06
11	1	354,089	6,753,683	409.01	1.22	5.55	Level 1 South Drive	6.77
11	1	354,086	6,753,684	409.01	2.44	3.06	Level 1 South Drive	7.47
11	1	354,086	6,753,685	409.01	2.51	0.77	Level 1 South Drive	1.93
11	1	354,087	6,753,687	409.01	3.05	0.77	Level 1 South Drive	2.35
11	1	354,088	6,753,690	409.01	2.64	0.77	Level 1 South Drive	2.03
11	1	354,089	6,753,692	409.01	2.90	3.83	Level 1 South Drive	11.11
11	1	354,091	6,753,691	409.01	2.74	4.97	Level 1 South Drive	13.62
11	1	354,091	6,753,693	409.01	2.44	19.96	Level 1 South Drive	48.70
11	1	354,091	6,753,694	409.01	2.44	8.99	Level 1 South Drive	21.94
11	1	354,089	6,753,694	409.01	3.05	9.18	Level 1 South Drive	28.00
11	1	354,089	6,753,696	409.01	3.05	0.19	Level 1 South Drive	0.58
11	1	354,089	6,753,698	409.01	2.34	1.53	Level 1 South Drive	3.58
11	1	354,092	6,753,698	409.01	2.44	7.02	Level 1 South Drive	17.13
11	1	354,094	6,753,760	409.01	1.22	27.93	Level 1	34.07
11	1	354,094	6,753,762	409.01	0.91	7.02	Level 1	6.39
11	1	354,094	6,753,764	409.01	0.91	17.99	Level 1	16.37
11	1	354,094	6,753,767	409.01	0.20	67.99	Level 1	13.60
11	1	354,095	6,753,769	409.01	0.61	6	Level 1	3.66
11	1	354,095	6,753,771	409.01	0.61	27.93	Level 1	17.04
11	1	354,097	6,753,773	409.01	0.76	27.93	Level 1	21.23
11	1	354,097	6,753,775	409.01	0.61	23.92	Level 1	14.59
11	1	354,097	6,753,777	409.01	0.61	15.94	Level 1	9.72
11	1	354,098	6,753,778	409.01	0.61	13.97	Level 1	8.52
11	1	354,099	6,753,782	409.01	1.22	4.02	Level 1	4.90
11	1	354,100	6,753,785	409.01	1.22	0.19	Level 1	0.23
11	1	354,101	6,753,787	409.01	1.22	24.87	Level 1	30.34
11	1	354,101	6,753,789	409.01	1.22	25.89	Level 1	31.59
11	1	354,101	6,753,790	409.01	1.22	13.97	Level 1	17.04
11	1	354,102	6,753,795	409.01	1.22	10.97	Level 1	13.38
11	1	354,103	6,753,796	409.01	1.22	53	Level 1	64.66
11	1	354,103	6,753,798	409.01	0.91	35.97	Level 1	32.73
11	2	354,104	6,753,800	409.01	0.91	63.97	Level 1	58.21
11	2	354,104	6,753,802	409.01	0.91	50	Level 1	45.50
11	2	354,105	6,753,804	409.01	0.91	24.87	Level 1	22.63
11	2	354,105	6,753,804	409.01	0.30	1.98	Level 1 North Drive	0.59
11	2	354,106	6,753,817	409.01	0.30	17.99	Level 1 North Drive	5.40
11	2	354,106	6,753,818	409.01	0.30	1.98	Level 1 North Drive	0.59
11	2	354,106	6,753,820	409.01	0.15	10.97	Level 1 North Drive	1.65
11	2	354,106	6,753,821	409.01	0.15	1.98	Level 1 North Drive	0.30
11	2	354,106	6,753,823	409.01	0.15	12.95	Level 1 North Drive	1.94
11	2	354,106	6,753,824	409.01	0.46	12.95	Level 1 North Drive	5.96
11	2	354,106	6,753,826	409.01	0.61	7.02	Level 1 North Drive	4.28
11	2	354,106	6,753,827	384.04	0.61	9.95	Level 1 North Drive	6.07
11	2	354,106	6,753,829	409.01	0.46	21.88	Level 1 North Drive	10.06
11	2	354,106	6,753,830	409.01	0.46	19.9	Level 1 North Drive	9.15
11	2	354,106	6,753,832	409.01	0.46	27.93	Level 1 North Drive	12.85
11	2	354,106	6,753,833	409.01	0.30	34.95	Level 1 North Drive	10.49
11	2	354,107	6,753,835	409.01	0.15	3	Level 1 North Drive	0.45
11	2	354,107	6,753,837	409.01	0.15	1.98	Level 1 North Drive	0.30
11	2	354,107	6,753,842	409.01	0.46	21.88	Level 1 North Drive	10.06
11	2	354,107	6,753,845	409.01	0.30	38.01	Level 1 North Drive	11.40
11	2	354,107	6,753,847	409.01	0.30	62.95	Level 1 North Drive	18.89
11	2	354,107	6,753,850	409.01	0.30	34.95	Level 1 North Drive	10.49
11	2	354,107	6,753,852	409.01	0.61	32.97	Level 1 North Drive	20.11
11	2	354,107	6,753,855	409.01	0.61	33.99	Level 1 North Drive	20.73
11	2	354,107	6,753,857	409.01	0.46	22	Level 1 North Drive	10.12
11	2	354,099	6,753,752	407.32	0.76	7.02	Level 1-2 Stope	5.34
11	2	354,100	6,753,752	406.19	0.76	8.99	Level 1-2 Stope	6.83
11	2	354,101	6,753,753	405.06	0.76	65.95	Level 1-2 Stope	50.12
11	2	354,102	6,753,753	403.93	0.76	8.99	Level 1-2 Stope	6.83
11	2	354,103	6,753,753	402.8	0.61	9.95	Level 1-2 Stope	6.07
11	2	354,105	6,753,753	401.82	0.61	7.02	Level 1-2 Stope	4.28
11	2	354,105	6,753,753	401.82	0.91	10.97	Level 1-2 Stope	9.98
11	2	354,122	6,753,600	384.04	0.30	6	Level 2 South Drive	1.80
11	2	354,121	6,753,605	384.04	0.30	0.19	Level 2 South Drive	0.06
11	2	354,121	6,753,611	384.04	0.30	1.98	Level 2 South Drive	0.59

ASX:GA8

GoldArc Resources

goldarcres.com.au

104 Colin Street  
West Perth WA 6005

+618 9420 8208





**ASX:GA8**

**GoldArc Resources**

goldarcres.com.au

104 Colin Street  
West Perth WA 6005

+618 9420 8208



11	2	354,121	6,753,615	384.04	0.30	1.53	Level 2 South Drive	0.46
11	2	354,121	6,753,619	384.04	0.46	1.02	Level 2 South Drive	0.47
11	2	354,121	6,753,622	384.04	0.30	7.02	Level 2 South Drive	2.11
11	2	354,121	6,753,624	384.04	0.30	1.98	Level 2 South Drive	0.59
11	2	354,121	6,753,629	384.04	0.30	1.98	Level 2 South Drive	0.59
11	2	354,122	6,753,636	384.04	0.91	8.04	Level 2 South Drive	7.32
11	2	354,122	6,753,640	384.04	1.07	14.99	Level 2 South Drive	16.04
11	2	354,122	6,753,644	384.04	0.91	5.04	Level 2 South Drive	4.59
11	2	354,122	6,753,650	384.04	0.30	23.98	Level 2 South Drive	7.19
11	2	354,122	6,753,652	384.04	0.30	13.97	Level 2 South Drive	4.19
11	2	354,123	6,753,654	384.04	0.30	9.95	Level 2 South Drive	2.99
11	2	354,122	6,753,656	384.04	1.52	13.97	Level 2 South Drive	21.23
11	2	354,122	6,753,659	384.04	1.52	173.98	Level 2 South Drive	264.45
11	2	354,122	6,753,663	384.04	1.68	39.99	Level 2 South Drive	67.18
11	2	354,122	6,753,664	384.04	1.22	148.03	Level 2 South Drive	180.60
11	2	354,121	6,753,666	384.04	0.76	35.97	Level 2 South Drive	27.34
11	2	354,121	6,753,667	384.04	0.91	100	Level 2 South Drive	91.00
11	2	354,121	6,753,669	384.04	0.61	8.29	Level 2 South Drive	5.06
11	2	354,120	6,753,670	384.04	0.46	45.98	Level 2 South Drive	21.15
11	2	354,120	6,753,673	384.04	0.25	100	Level 2 South Drive	25.00
11	2	354,119	6,753,676	384.04	0.10	294.27	Level 2 South Drive	29.43
11	2	354,119	6,753,679	384.04	0.05	294.27	Level 2 South Drive	14.71
11	2	354,119	6,753,682	384.04	0.15	7.65	Level 2 South Drive	1.15
11	2	354,120	6,753,688	384.04	0.61	9.95	Level 2	6.07
11	2	354,120	6,753,692	384.04	1.22	57.02	Level 2	69.56
11	2	354,120	6,753,695	384.04	1.52	141.97	Level 2	215.79
11	2	354,121	6,753,698	384.04	1.98	53.57	Level 2	106.07
11	2	354,121	6,753,701	384.04	1.37	44.01	Level 2	60.29
11	2	354,121	6,753,704	384.04	1.07	11.1	Level 2	11.88
11	2	354,121	6,753,707	384.04	0.46	96.05	Level 2	44.18
11	2	354,122	6,753,710	384.04	0.36	58.16	Level 2	20.94
11	3	354,122	6,753,713	384.04	0.25	45.92	Level 2	11.48
11	3	354,122	6,753,716	384.04	0.61	21.81	Level 2	13.30
11	3	354,123	6,753,718	384.04	0.46	60.08	Level 2	27.64
11	3	354,124	6,753,722	384.04	0.25	9.18	Level 2	2.30
11	3	354,124	6,753,725	384.04	0.13	70.03	Level 2	9.10
11	3	354,124	6,753,728	384.04	0.25	9.18	Level 2	2.30
11	3	354,125	6,753,730	384.04	1.07	12.95	Level 2	13.86
11	3	354,126	6,753,733	384.04	0.76	61.93	Level 2	47.07
11	3	354,126	6,753,735	384.04	0.76	38.01	Level 2	28.89
11	3	354,127	6,753,738	384.04	0.46	83.99	Level 2	38.64
11	3	354,128	6,753,743	384.04	0.20	19.9	Level 2	3.98
11	3	354,128	6,753,745	384.04	0.76	108.04	Level 2	82.11
11	3	354,129	6,753,747	384.04	0.30	1.98	Level 2	0.59
11	3	354,129	6,753,748	384.04	0.61	12.95	Level 2	7.90
11	3	354,129	6,753,750	384.04	0.30	63.27	Level 2	18.98
11	3	354,130	6,753,753	384.04	0.61	88.01	Level 2	53.69
11	3	354,130	6,753,755	384.04	0.46	26.91	Level 2	12.38
11	3	354,130	6,753,757	384.04	0.46	8.99	Level 2	4.14
11	3	354,131	6,753,758	384.04	0.46	10.97	Level 2	5.05
11	3	354,131	6,753,760	384.04	0.46	19.9	Level 2	9.15
11	3	354,131	6,753,762	384.04	0.46	26.91	Level 2	12.38
11	3	354,131	6,753,764	384.04	0.76	44.01	Level 2	33.45
11	3	354,132	6,753,768	384.04	0.61	23.92	Level 2	14.59
11	3	354,132	6,753,769	384.04	0.76	23.92	Level 2	18.18
11	3	354,133	6,753,771	384.04	0.76	62.95	Level 2	47.84
11	3	354,133	6,753,773	384.04	0.91	157.02	Level 2	142.89
11	3	354,133	6,753,774	384.04	0.76	28.89	Level 2	21.96
11	3	354,134	6,753,776	384.04	0.76	35.27	Level 2	26.81
11	3	354,134	6,753,778	384.04	0.76	39.99	Level 2	30.39
11	3	354,134	6,753,780	384.04	0.76	8.04	Level 2	6.11
11	3	354,134	6,753,782	384.04	0.76	13.97	Level 2	10.62
11	3	354,135	6,753,783	384.04	0.76	35.97	Level 2	27.34
11	3	354,135	6,753,785	384.04	0.76	25.89	Level 2	19.68
11	3	354,135	6,753,787	384.04	0.61	17.6	Level 2	10.74
11	3	354,136	6,753,789	384.04	1.37	159.95	Level 2	219.13
11	3	354,136	6,753,790	384.04	0.91	12.95	Level 2	11.78
11	3	354,136	6,753,792	384.04	0.91	54.02	Level 2	49.16
11	3	354,137	6,753,794	384.04	1.07	56	Level 2	59.92
11	3	354,137	6,753,796	384.04	0.76	19.9	Level 2	15.12
11	3	354,137	6,753,797	384.04	0.91	21.56	Level 2	19.62
11	3	354,137	6,753,799	384.04	0.91	17.99	Level 2	16.37
11	3	354,138	6,753,802	384.04	0.76	12.95	Level 2	9.84
11	3	354,138	6,753,804	384.04	0.30	6	Level 2	1.80
11	3	354,139	6,753,808	384.04	0.76	55.74	Level 2 North Drive	42.36
11	3	354,139	6,753,810	384.04	1.07	111.93	Level 2 North Drive	119.77
11	3	354,139	6,753,812	384.04	1.22	273.99	Level 2 North Drive	334.27
11	3	354,140	6,753,813	384.04	1.52	160.97	Level 2 North Drive	244.67
11	3	354,140	6,753,815	384.04	1.52	44.96	Level 2 North Drive	68.34
11	3	354,140	6,753,817	384.04	1.52	7.02	Level 2 North Drive	10.67
11	3	354,140	6,753,819	384.04	1.52	84.95	Level 2 North Drive	129.12
11	3	354,141	6,753,820	384.04	1.52	189.86	Level 2 North Drive	288.59
11	3	354,141	6,753,822	384.04	1.52	61.93	Level 2 North Drive	94.13
11	3	354,141	6,753,824	384.04	1.52	39.99	Level 2 North Drive	60.78
11	3	354,142	6,753,826	384.04	1.52	13.97	Level 2 North Drive	21.23
11	3	354,142	6,753,827	384.04	0.91	95.6	Level 2 North Drive	87.00
11	3	354,142	6,753,829	384.04	0.91	19.9	Level 2 North Drive	18.11
11	3	354,142	6,753,831	384.04	1.22	4.02	Level 2 North Drive	4.90
11	3	354,143	6,753,833	384.04	1.22	157.02	Level 2 North Drive	191.56
11	3	354,143	6,753,834	384.04	1.52	91.97	Level 2 North Drive	139.79
11	3	354,143	6,753,836	384.04	1.52	6	Level 2 North Drive	9.12
11	3	354,144	6,753,838	384.04	0.61	4.02	Level 2 North Drive	2.45
11	3	354,144	6,753,840	384.04	0.61	9.95	Level 2 North Drive	6.07
11	3	354,144	6,753,841	384.04	0.76	20.92	Level 2 North Drive	15.90
11	3	354,145	6,753,845	384.04	0.61	31	Level 2 North Drive	18.91
11	3	354,146	6,753,847	384.04	0.61	8.99	Level 2 North Drive	5.48
11	3	354,146	6,753,848	384.04	0.30	20.92	Level 2 North Drive	6.28
12	1	354,146	6,753,850	384.04	0.61	51.02	Level 2 North Drive	31.12
12	1	354,146	6,753,852	384.04	0.61	59.95	Level 2 North Drive	36.57
12	1	354,147	6,753,854	384.04	0.61	80.61	Level 2 North Drive	49.17
12	1	354,146	6,753,827	378.99	1.52	93.88	Level 2-3 Rise (North)	142.70
12	1	354,147	6,753,826	378.07	1.52	28.38	Level 2-3 Rise (North)	43.14
12	1	354,149	6,753,826	377.15	0.91	70.03	Level 2-3 Rise (North)	63.73
12	1	354,150	6,753,825	376.24	0.91	70.03	Level 2-3 Rise (North)	63.73
12	1	354,151	6,753,825	375.32	0.76	118.62	Level 2-3 Rise (North)	90.15



**ASX:GA8**

**GoldArc Resources**

goldarcres.com.au

104 Colin Street  
West Perth WA 6005

+618 9420 8208



12	1	354,152	6,753,825	374.4	1.07	59.31	Level 2-3 Rise (North)	63.46
12	1	354,153	6,753,824	373.48	0.91	50.51	Level 2-3 Rise (North)	45.96
12	1	354,167	6,753,847	364.63	1.52	9.18	Level 2-3 Stope (North)	13.95
12	1	354,166	6,753,842	365.53	1.37	9.95	Level 2-3 Stope (North)	13.63
12	1	354,159	6,753,823	368.38	1.22	44.39	Level 2-3 Stope (North)	54.16
12	1	354,158	6,753,819	368.53	1.68	26.02	Level 2-3 Stope (North)	43.71
12	1	354,156	6,753,815	368.92	1.37	18.37	Level 2-3 Stope (North)	25.17
12	1	354,154	6,753,810	369.4	1.37	44.39	Level 2-3 Stope (North)	60.81
12	1	354,141	6,753,798	378.57	1.22	67.79	Level 2-3 Rise (North)	82.70
12	1	354,142	6,753,798	377.5	1.22	18.75	Level 2-3 Rise (North)	22.88
12	1	354,142	6,753,798	376.42	1.52	29.98	Level 2-3 Rise (North)	45.57
12	1	354,144	6,753,798	375.35	1.52	105.61	Level 2-3 Rise (North)	160.53
12	1	354,145	6,753,798	374.28	1.37	79.59	Level 2-3 Rise (North)	109.04
12	1	354,138	6,753,775	377.29	1.22	96.43	Level 2-3 Winze	117.64
12	1	354,140	6,753,775	374.26	1.22	85.78	Level 2-3 Winze	104.65
12	1	354,143	6,753,774	371.22	1.07	19.9	Level 2-3 Winze	21.29
12	1	354,145	6,753,774	368.19	1.68	61.23	Level 2-3 Winze	102.87
12	1	354,148	6,753,773	365.16	1.83	32.4	Level 2-3 Winze	59.29
12	1	354,134	6,753,750	378	0.91	45.03	Level 2-3 Winze	40.98
12	1	354,136	6,753,750	375.34	1.52	27.04	Level 2-3 Winze	41.10
12	1	354,138	6,753,749	372.67	1.22	54.02	Level 2-3 Winze	65.90
12	1	354,141	6,753,749	370.01	1.37	63.01	Level 2-3 Winze	86.32
12	1	354,143	6,753,748	367.34	1.22	38.52	Level 2-3 Winze	46.99
12	1	354,146	6,753,748	364.68	1.52	1.02	Level 2-3 Winze	1.55
12	1	354,131	6,753,734	376.84	0.91	23.34	Level 2-3 Winze	21.24
12	1	354,137	6,753,734	372.24	1.83	45.92	Level 2-3 Winze	84.03
12	1	354,139	6,753,734	370.41	2.13	221.37	Level 2-3 Winze	471.52
12	1	354,140	6,753,734	368.64	2.13	64.29	Level 2-3 Winze	136.94
12	1	354,132	6,753,719	373.01	1.52	45.92	Level 2-3 Main Shaft	69.80
12	1	354,134	6,753,719	370.97	1.83	33.99	Level 2-3 Main Shaft	62.20
12	1	354,136	6,753,719	369.22	1.83	24.49	Level 2-3 Main Shaft	44.82
12	1	354,140	6,753,719	365.76	2.13	111.99	Level 2-3 Main Shaft	238.54
12	1	354,144	6,753,718	362.26	80.17		Level 2-3 Main Shaft	
12	1	354,139	6,753,702	367.09	2.13	217.35	Level 2-3 Stope	462.96
12	1	354,141	6,753,698	365.29	1.52	75.77	Level 2-3 Stope	115.17
12	1	354,143	6,753,695	363.51	1.22	97.96	Level 2-3 Stope	119.51
12	1	354,143	6,753,691	363.65	0.61	159.19	Level 2-3 Stope	97.11
12	1	354,135	6,753,689	369.92	0.15	1.98	Level 2-3 Stope	0.30
12	1	354,129	6,753,688	374.87	0.15	54.27	Level 2-3 Stope	8.14
12	1	354,142	6,753,684	364.14	1.22	3.83	Level 2-3 Stope (South)	4.67
12	1	354,143	6,753,681	363.96	0.61	24.49	Level 2-3 Stope (South)	14.94
12	1	354,143	6,753,676	363.94	0.46	49.75	Level 2-3 Stope (South)	22.89
12	1	354,143	6,753,673	363.78	0.30	32.91	Level 2-3 Stope (South)	9.87
12	1	354,126	6,753,646	378.26	1.07	1.98	Level 2-3 Winze (South)	2.12
12	1	354,129	6,753,645	375.82	1.22	3.44	Level 2-3 Winze (South)	4.20
12	1	354,131	6,753,645	372.4	0.91	48.02	Level 2-3 Winze (South)	43.70
12	1	354,133	6,753,645	371.03	1.22	6.38	Level 2-3 Winze (South)	7.78
12	1	354,139	6,753,577	362	0.30	19.9	Level 3 South Drive	5.97
12	1	354,139	6,753,581	362	0.30	26.02	Level 3 South Drive	7.81
12	1	354,138	6,753,586	362	1.68	0.19	Level 3 South Drive	0.32
12	1	354,139	6,753,591	362	1.37	9.18	Level 3 South Drive	12.58
12	1	354,139	6,753,596	362	0.61	139.29	Level 3 South Drive	84.97
12	1	354,139	6,753,600	362	0.91	14.54	Level 3 South Drive	13.23
12	1	354,140	6,753,603	362	0.91	56.63	Level 3 South Drive	51.53
12	1	354,140	6,753,606	362	0.61	39.8	Level 3 South Drive	24.28
12	1	354,141	6,753,609	362	0.76	0.19	Level 3 South Drive	0.14
12	1	354,141	6,753,612	362	0.46	0.19	Level 3 South Drive	0.09
12	1	354,141	6,753,615	362	0.69	0.19	Level 3 South Drive	0.13
12	2	354,141	6,753,619	362	0.53	4.59	Level 3 South Drive	2.43
12	2	354,142	6,753,622	362	0.30	0.19	Level 3 South Drive	0.06
12	2	354,142	6,753,625	362	1.22	0.19	Level 3 South Drive	0.23
12	2	354,142	6,753,628	362	0.30	0.19	Level 3 South Drive	0.06
12	2	354,142	6,753,631	362	0.46	0.19	Level 3 South Drive	0.09
12	2	354,142	6,753,634	362	0.61	62.76	Level 3 South Drive	38.28
12	2	354,142	6,753,637	362	0.46	3.83	Level 3 South Drive	1.76
12	2	354,142	6,753,640	362	0.38	16.84	Level 3 South Drive	6.40
12	2	354,142	6,753,643	362	0.46	21.43	Level 3 South Drive	9.86
12	2	354,142	6,753,646	362	0.61	9.18	Level 3 South Drive	5.60
12	2	354,143	6,753,650	362	0.76	3.06	Level 3 South Drive	2.33
12	2	354,143	6,753,653	362	1.22	14.54	Level 3 South Drive	17.74
12	2	354,143	6,753,656	362	1.37	11.48	Level 3 South Drive	15.73
12	2	354,144	6,753,659	362	1.07	22.19	Level 3 South Drive	23.74
12	2	354,144	6,753,662	362	0.20	9.95	Level 3 South Drive	1.99
12	2	354,145	6,753,665	362	0.15	5.36	Level 3 South Drive	0.80
12	2	354,139	6,753,582	362	0.30	49.24	Level 3 South Drive#	14.77
12	2	354,139	6,753,584	362	0.46	22.45	Level 3 South Drive#	10.33
12	2	354,139	6,753,586	362	0.46	62.5	Level 3 South Drive#	28.75
12	2	354,139	6,753,588	362	0.76	38.46	Level 3 South Drive#	29.23
12	2	354,141	6,753,611	362	0.30	33.67	Level 3	10.10
12	2	354,146	6,753,671	362	0.46	57.4	Level 3 South Drive	26.40
12	2	354,146	6,753,674	362	0.30	41.33	Level 3 South Drive	12.40
12	2	354,146	6,753,695	362	3.05	16.84	Level 3	51.36
12	2	354,146	6,753,697	362	2.44	22.96	Level 3	56.02
12	2	354,146	6,753,699	362	1.83	79.59	Level 3	145.65
12	2	354,146	6,753,701	362	1.83	3.44	Level 3	6.30
12	2	354,146	6,753,706	362	2.13	3.06	Level 3	6.52
12	2	354,147	6,753,710	362	2.44	19.96	Level 3	48.70
12	2	354,148	6,753,724	362	1.83	44.32	Level 3	81.11
12	2	354,147	6,753,727	362	2.13	92.8	Level 3	197.66
12	2	354,147	6,753,730	362	1.83	34.06	Level 3	62.33
12	2	354,147	6,753,732	362	1.52	96.81	Level 3	147.15
12	2	354,148	6,753,735	362	1.83	41.97	Level 3	76.81
12	2	354,148	6,753,738	362	1.68	45.92	Level 3	77.15
12	2	354,148	6,753,743	362	1.52	18.37	Level 3	27.92
12	2	354,148	6,753,746	362	1.22	54.02	Level 3	65.90
12	2	354,149	6,753,759	362	1.52	106.95	Level 3	162.56
12	2	354,150	6,753,764	362	1.22	39.8	Level 3	48.56
12	2	354,151	6,753,769	362	1.83	79.98	Level 3	146.36
12	2	354,151	6,753,774	362	1.83	32.4	Level 3	59.29
12	2	354,152	6,753,783	362	1.52	9.95	Level 3	15.12
12	2	354,154	6,753,790	362	1.52	9.69	Level 3	14.73
12	2	354,157	6,753,796	362	1.22	32.46	Level 3	39.60
12	2	354,159	6,753,798	362	2.13	18.37	Level 3	39.13
12	2	354,166	6,753,812	362	2.74	61.23	Level 3 North Drive	167.77
12	2	354,167	6,753,814	362	1.83	18.75	Level 3 North Drive	34.31



**ASX:GA8**

GoldArc Resources

goldarcres.com.au

104 Colin Street  
West Perth WA 6005

+618 9420 8208



12	2	354,167	6,753,816	362	1.52	29.46	Level 3 North Drive	44.78
12	2	354,168	6,753,818	362	1.52	57.02	Level 3 North Drive	86.67
12	2	354,171	6,753,834	362	1.37	13.01	Level 3 North Drive	17.82
12	2	354,171	6,753,837	362	1.22	5.36	Level 3 North Drive	6.54
12	2	354,171	6,753,840	362	1.07	12.25	Level 3 North Drive	13.11
12	2	354,172	6,753,843	362	1.07	14.54	Level 3 North Drive	15.56
12	2	354,172	6,753,846	362	0.91	33.67	Level 3 North Drive	30.64
12	2	354,173	6,753,849	362	0.46	9.95	Level 3 North Drive	4.58
12	2	354,173	6,753,852	362	0.91	9.18	Level 3 North Drive	8.35
12	2	354,174	6,753,855	362	1.22	26.79	Level 3 North Drive	32.68
12	2	354,174	6,753,858	362	0.76	9.95	Level 3 North Drive	7.56
12	2	354,174	6,753,861	362	0.76	26.02	Level 3 North Drive	19.78
12	2	354,174	6,753,864	362	0.61	30.61	Level 3 North Drive	18.67
12	2	354,174	6,753,868	362	0.76	44.39	Level 3 North Drive	33.74
12	2	354,170	6,753,826	362	0.91	61.23	Level 3 North Drive#	55.72
12	2	354,170	6,753,827	362	0.91	61.42	Level 3 North Drive#	55.89
12	2	354,170	6,753,829	362	0.61	17.6	Level 3 North Drive#	10.74
12	2	354,171	6,753,830	362	1.22	73.73	Level 3 North Drive#	89.95
12	2	354,171	6,753,831	362	1.22	73.73	Level 3 North Drive#	89.95
12	3	354,171	6,753,833	362	2.44	19.96	Level 3 North Drive#	48.70
12	3	354,172	6,753,834	362	1.52	8.1	Level 3 North Drive#	12.31
12	3	354,172	6,753,835	362	1.52	9.44	Level 3 North Drive#	14.35
12	3	354,172	6,753,837	362	1.22	50	Level 3 North Drive#	61.00
12	3	354,172	6,753,838	362	0.91	33.1	Level 3 North Drive#	30.12
12	3	354,172	6,753,839	362	0.91	43.56	Level 3 North Drive#	39.64
12	3	354,174	6,753,851	362	0.61	25	Level 3 North Drive#	15.25
12	3	354,174	6,753,853	362	0.61	11.22	Level 3 North Drive#	6.84
12	3	354,174	6,753,854	362	0.61	45.03	Level 3 North Drive#	27.47
12	3	354,174	6,753,855	362	0.61	75.64	Level 3 North Drive#	46.14
12	3	354,174	6,753,857	362	0.91	36.42	Level 3 North Drive#	33.14
12	3	354,175	6,753,858	362	0.91	15.75	Level 3 North Drive#	14.33
12	3	354,175	6,753,860	362	1.22	86.55	Level 3 North Drive#	105.59
12	3	354,175	6,753,861	362	1.22	43.37	Level 3 North Drive#	52.91
12	3	354,175	6,753,863	362	0.91	22.07	Level 3 North Drive#	20.08
12	3	354,175	6,753,864	362	0.76	75	Level 3 North Drive#	57.00
12	3	354,175	6,753,866	362	0.30	16.2	Level 3 North Drive#	4.86
12	3	354,175	6,753,867	362	0.30	43.11	Level 3 North Drive#	12.93
12	3	354,175	6,753,869	362	0.30	33.67	Level 3 North Drive#	10.10
12	3	354,175	6,753,870	362	0.30	26.85	Level 3 North Drive#	8.06
12	3	354,190	6,753,864	345.28	2.44	5.74	Level 3-4 Stope (North)	14.01
12	3	354,190	6,753,861	345.5	2.44	6.89	Level 3-4 Stope (North)	16.81
12	3	354,190	6,753,858	345.57	2.03	6.12	Level 3-4 Stope (North)	12.42
12	3	354,190	6,753,855	345.4	2.26	9.18	Level 3-4 Stope (North)	20.75
12	3	354,189	6,753,852	345.28	1.91	5.36	Level 3-4 Stope (North)	10.24
12	3	354,189	6,753,848	345.46	2.13	22.19	Level 3-4 Stope (North)	47.26
12	3	354,186	6,753,844	347.9	1.52	13.78	Level 3-4 Stope (North)	20.95
12	3	354,184	6,753,842	349.15	1.40	4.59	Level 3-4 Rise (North)	6.43
12	3	354,183	6,753,842	350.46	0.61	24.49	Level 3-4 Rise (North)	14.94
12	3	354,180	6,753,842	352.43	0.84	4.59	Level 3-4 Rise (North)	3.86
12	3	354,178	6,753,842	354.74	0.51	2.3	Level 3-4 Rise (North)	1.17
12	3	354,185	6,753,837	347.78	0.76	0.77	Level 3-4 Stope (North)	0.59
12	3	354,187	6,753,834	345.21	0.99	10.71	Level 3-4 Stope (North)	10.60
12	3	354,186	6,753,832	345.42	1.09	11.48	Level 3-4 Stope (North)	12.51
12	3	354,186	6,753,829	345.52	0.76	9.18	Level 3-4 Rise (North)	6.98
12	3	354,185	6,753,827	345.83	0.84	24.49	Level 3-4 Rise (North)	20.57
12	3	354,185	6,753,824	346.05	0.81	57.4	Level 3-4 Rise (North)	46.49
12	3	354,184	6,753,821	346.42	1.02	107.15	Level 3-4 Stope (North)	109.29
12	3	354,181	6,753,822	349.05	1.14	20.66	Level 3-4 Stope (North)	23.55
12	3	354,179	6,753,822	351.23	1.14	9.18	Level 3-4 Stope (North)	10.47
12	3	354,177	6,753,820	352.63	1.14	51.28	Level 3-4 Rise (North)	58.46
12	3	354,174	6,753,820	354.74	1.63	22.58	Level 3-4 Rise (North)	36.81
12	3	354,172	6,753,820	356.9	1.98	25.26	Level 3-4 Rise (North)	50.01
12	3	354,169	6,753,820	359	1.52	40.56	Level 3-4 Rise (North)	61.65
12	3	354,177	6,753,818	351.9	1.07	47.45	Level 3-4 Stope (North)	50.77
12	3	354,177	6,753,814	351.52	0.61	25.26	Level 3-4 Stope (North)	15.41
12	3	354,182	6,753,812	347.29	1.83	41.33	Level 3-4 Stope (North)	75.63
12	3	354,181	6,753,810	347.26	2.39	7.65	Level 3-4 Stope (North)	18.28
12	3	354,181	6,753,807	347.31	2.64	40.56	Level 3-4 Stope (North)	107.08
12	3	354,181	6,753,805	347.04	2.59	130.1	Level 3-4 Stope (North)	336.96
12	3	354,179	6,753,802	347.43	2.18	93.37	Level 3-4 Stope (North)	203.55
12	3	354,176	6,753,801	350.11	1.63	9.95	Level 3-4 Stope (North)	16.22
12	3	354,170	6,753,799	352.99	1.17	42.09	Level 3-4 Rise (North)	49.25
12	3	354,168	6,753,799	354.77	1.22	37.5	Level 3-4 Rise (North)	45.75
12	3	354,165	6,753,799	356.56	1.22	0.77	Level 3-4 Rise (North)	0.94
12	3	354,162	6,753,799	358.34	1.83	2.3	Level 3-4 Rise (North)	4.21
12	3	354,170	6,753,797	352.53	1.30	54.34	Level 3-4 Stope	70.64
12	3	354,170	6,753,794	351.58	1.42	191.33	Level 3-4 Stope	271.69
12	3	354,170	6,753,791	350.81	0.86	28.32	Level 3-4 Stope	24.36
12	3	354,169	6,753,788	350.13	0.76	16.45	Level 3-4 Stope	12.50
12	3	354,169	6,753,785	349.71	0.91	3.06	Level 3-4 Stope	2.78
12	3	354,169	6,753,782	349.24	0.91	2.3	Level 3-4 Stope	2.09
12	3	354,167	6,753,780	349.82	0.41	6.12	Level 3-4 Stope	2.51
12	3	354,165	6,753,777	351.03	0.97	8.42	Level 3-4 Stope	8.17
12	3	354,162	6,753,774	352.82	0.46	97.96	Level 3-4 Rise	45.06
12	3	354,159	6,753,774	354.78	0.46	139.29	Level 3-4 Rise	64.07
13	1	354,156	6,753,774	356.74	0.71	146.18	Level 3-4 Rise	103.79
13	1	354,153	6,753,774	358.7	1.40	107.15	Level 3-4 Rise	150.01
13	1	354,164	6,753,772	351.67	0.91	8.74	Level 3-4 Stope	7.95
13	1	354,164	6,753,768	351.07	0.05	0.19	Level 3-4 Stope	0.01
13	1	354,164	6,753,765	350.89	0.69	21.43	Level 3-4 Stope	14.79
13	1	354,164	6,753,762	351.36	1.45	59.7	Level 3-4 Stope	86.57
13	1	354,163	6,753,760	351.62	2.51	33.67	Level 3-4 Stope	84.51
13	1	354,162	6,753,758	351.77	2.51	176.02	Level 3-4 Stope	441.81
13	1	354,161	6,753,756	352.03	1.78	13.78	Level 3-4 Stope	24.53
13	1	354,161	6,753,754	352.29	2.44	32.91	Level 3-4 Stope	80.30
13	1	354,158	6,753,752	354.09	2.44	5.36	Level 3-4 Stope	13.08
13	1	354,153	6,753,752	357.63	1.52	5.36	Level 3-4 Stope	8.15
13	1	354,158	6,753,748	353.64	1.52	34.89	Level 3-4 Rise	53.03
13	1	354,159	6,753,748	353.01	1.52	170.41	Level 3-4 Rise	259.02
13	1	354,159	6,753,748	352.38	1.83	93.82	Level 3-4 Rise	171.69
13	1	354,160	6,753,748	351.75	1.22	74.04	Level 3-4 Rise	90.33
13	1	354,161	6,753,748	351.12	1.83	45.47	Level 3-4 Rise	83.21
13	1	354,162	6,753,748	350.49	2.13	63.52	Level 3-4 Rise	135.30
13	1	354,163	6,753,748	349.86	1.52	149.05	Level 3-4 Rise	226.56
13	1	354,164	6,753,748	349.23	1.83	49.04	Level 3-4 Rise	89.74



**ASX:GA8**

**GoldArc Resources**

goldarcres.com.au

104 Colin Street  
West Perth WA 6005

+618 9420 8208



13	1	354,165	6,753,748	348.6	1.83	37.5	Level 3-4 Rise	68.63
13	1	354,166	6,753,748	347.98	1.52	79.27	Level 3-4 Rise	120.49
13	1	354,167	6,753,748	347.35	1.52	29.98	Level 3-4 Rise	45.57
13	1	354,168	6,753,748	346.72	1.83	65.05	Level 3-4 Rise	119.04
13	1	354,168	6,753,748	346.09	1.52	87.5	Level 3-4 Rise	133.00
13	1	354,169	6,753,748	345.46	1.83	71.81	Level 3-4 Rise	131.41
13	1	354,170	6,753,748	344.83	1.52	71.05	Level 3-4 Rise	108.00
13	1	354,171	6,753,747	344.2	1.83	107.53	Level 3-4 Rise	196.78
13	1	354,172	6,753,747	343.57	2.13	156.51	Level 3-4 Rise	333.37
13	1	354,173	6,753,747	342.94	1.52	144.65	Level 3-4 Rise	219.87
13	1	354,154	6,753,748	356.38	1.73	8.42	Level 3-4 Rise	14.57
13	1	354,156	6,753,746	355.02	1.45	7.65	Level 3-4 Stope	11.09
13	1	354,155	6,753,742	355.67	1.98	15.31	Level 3-4 Stope	30.31
13	1	354,151	6,753,741	358.57	2.06	9.95	Level 3-4 Stope	20.50
13	1	354,150	6,753,718	362	0.61	34.69	Level 3-4 Main Shaft	21.16
13	1	354,154	6,753,718	354.43	2.74	44.01	Level 3-4 Main Shaft	120.59
13	1	354,158	6,753,718	352.01	1.52	29.34	Level 3-4 Main Shaft	44.60
13	1	354,160	6,753,717	350.8	1.93	17.99	Level 3-4 Main Shaft	34.72
13	1	354,163	6,753,717	348.37	1.83	41.33	Level 3-4 Main Shaft	75.63
13	1	354,165	6,753,717	347.16	2.13	84.19	Level 3-4 Main Shaft	179.32
13	1	354,169	6,753,717	343.94	1.83	39.99	Level 3-4 Main Shaft	73.18
13	1	354,171	6,753,717	342.8	1.22	19.9	Level 3-4 Main Shaft	24.28
13	1	354,174	6,753,717	340.51	0.76	71.94	Level 3-4 Main Shaft	54.67
13	1	354,176	6,753,716	339.37	0.91	37.12	Level 3-4 Main Shaft	33.93
13	1	354,177	6,753,716	338.23	1.83	40.24	Level 3-4 Main Shaft	73.64
13	1	354,155	6,753,710	354.71	1.83	16.84	Level 3-4 Stope	30.82
13	1	354,151	6,753,706	357.47	1.83	49.75	Level 3-4 Stope	91.04
13	1	354,149	6,753,704	358.72	1.68	38.27	Level 3-4 Rise	64.29
13	1	354,151	6,753,704	357.43	1.68	139.29	Level 3-4 Rise	234.01
13	1	354,154	6,753,704	354.96	0.91	28.32	Level 3-4 Rise	25.77
13	1	354,155	6,753,702	354.81	0.91	61.23	Level 3-4 Stope	55.72
13	1	354,156	6,753,699	354.12	0.69	21.43	Level 3-4 Stope	14.79
13	1	354,157	6,753,696	353.26	0.61	50.51	Level 3-4 Stope	30.81
13	1	354,158	6,753,692	352.37	0.46	36.74	Level 3-4 Stope	16.90
13	1	354,159	6,753,689	351.35	0.61	54.34	Level 3-4 Stope	33.15
13	1	354,159	6,753,688	351.52	0.43	7.27	Level 3-4 Stope	3.13
13	1	354,160	6,753,687	350.55	0.30	89.16	Level 3-4 Rise	26.75
13	1	354,161	6,753,687	349.71	0.61	15.5	Level 3-4 Rise	9.46
13	1	354,162	6,753,687	348.87	0.91	31.82	Level 3-4 Rise	28.96
13	1	354,163	6,753,687	348.03	0.61	38.39	Level 3-4 Rise	23.42
13	1	354,165	6,753,687	347.19	1.52	63.97	Level 3-4 Rise	97.23
13	1	354,166	6,753,687	346.35	1.52	27.81	Level 3-4 Rise	42.27
13	1	354,167	6,753,687	345.51	1.52	18.56	Level 3-4 Rise	28.21
13	1	354,168	6,753,687	344.67	1.52	99.56	Level 3-4 Rise	151.33
13	1	354,174	6,753,697	341.07	2.59	53.57	Level 3-4 Stope	138.75
13	1	354,173	6,753,693	341.67	2.59	50.51	Level 3-4 Stope	130.82
13	2	354,172	6,753,689	342.08	2.59	53.57	Level 3-4 Stope	138.75
13	2	354,171	6,753,686	341.91	2.29	35.2	Level 3-4 Stope	80.61
13	2	354,170	6,753,678	341.07	2.36	39.8	Level 3-4 Stope (South)	93.93
13	2	354,171	6,753,674	340.21	2.51	41.33	Level 3-4 Stope (South)	103.74
13	2	354,161	6,753,684	349.73	0.61	38.27	Level 3-4 Stope (South)	23.34
13	2	354,162	6,753,681	348.47	0.56	25.26	Level 3-4 Stope (South)	14.15
13	2	354,163	6,753,677	347.91	0.64	24.49	Level 3-4 Stope (South)	15.67
13	2	354,164	6,753,673	345.81	0.76	93.37	Level 3-4 Stope (South)	70.96
13	2	354,164	6,753,669	345.83	1.12	10.71	Level 3-4 Stope (South)	12.00
13	2	354,162	6,753,667	346.76	1.04	28.32	Level 3-4 Stope (South)	29.45
13	2	354,160	6,753,666	348.56	0.61	5.36	Level 3-4 Stope (South)	3.27
13	2	354,166	6,753,599	338.46	1.22	1.08	Level 4 South Drive	1.32
13	2	354,166	6,753,602	338.46	0.76	1.53	Level 4 South Drive	1.16
13	2	354,167	6,753,605	338.46	0.10	338.27	Level 4 South Drive	33.83
13	2	354,167	6,753,608	338.46	0.23	936.75	Level 4 South Drive	215.45
13	2	354,167	6,753,611	338.46	0.61	4.97	Level 4 South Drive	3.03
13	2	354,168	6,753,614	338.46	0.61	0.77	Level 4 South Drive	0.47
13	2	354,168	6,753,617	338.46	0.15	61.99	Level 4 South Drive	9.30
13	2	354,169	6,753,620	338.46	0.10	2.3	Level 4 South Drive	0.23
13	2	354,169	6,753,623	338.46	0.15	8.42	Level 4 South Drive	1.26
13	2	354,169	6,753,626	338.46	0.15	8.42	Level 4 South Drive	1.26
13	2	354,170	6,753,629	338.46	0.46	2.3	Level 4 South Drive	1.06
13	2	354,170	6,753,632	338.46	0.61	62.76	Level 4 South Drive	38.28
13	2	354,171	6,753,635	338.46	0.38	44.39	Level 4 South Drive	16.87
13	2	354,171	6,753,638	338.46	0.38	0.77	Level 4 South Drive	0.29
13	2	354,171	6,753,641	338.46	0.15	1.53	Level 4 South Drive	0.23
13	2	354,171	6,753,644	338.46	0.30	0.19	Level 4 South Drive	0.06
13	2	354,172	6,753,647	338.46	0.15	0.19	Level 4 South Drive	0.03
13	2	354,172	6,753,650	338.46	0.38	4.59	Level 4 South Drive	1.74
13	2	354,172	6,753,654	338.46	0.61	1.91	Level 4 South Drive	1.17
13	2	354,172	6,753,657	338.46	1.98	29.08	Level 4 South Drive	57.58
13	2	354,172	6,753,660	338.46	1.22	68.88	Level 4 South Drive	84.03
13	2	354,174	6,753,667	338.46	2.74	22.96	Level 4 South Drive	62.91
13	2	354,174	6,753,669	338.46	2.90	22.96	Level 4 South Drive	66.58
13	2	354,174	6,753,671	338.46	2.44	99.49	Level 4 South Drive	242.76
13	2	354,179	6,753,706	338.46	1.22	36.74	Level 4	44.82
13	2	354,179	6,753,726	338.46	1.22	37.5	Level 4	45.75
13	2	354,179	6,753,729	338.46	1.37	22.96	Level 4	31.46
13	2	354,179	6,753,731	338.46	1.52	62.76	Level 4	95.40
13	2	354,179	6,753,734	338.46	0.91	39.8	Level 4	36.22
13	2	354,179	6,753,737	338.46	0.53	39.8	Level 4	21.09
13	2	354,179	6,753,740	338.46	0.61	73.47	Level 4	44.82
13	2	354,179	6,753,743	338.46	0.91	48.98	Level 4	44.57
13	2	354,179	6,753,746	338.46	1.07	9.95	Level 4	10.65
13	2	354,180	6,753,749	338.46	1.52	16.84	Level 4	25.60
13	2	354,180	6,753,752	338.46	1.52	34.44	Level 4	52.35
13	2	354,181	6,753,755	338.46	1.37	35.97	Level 4	49.28
13	2	354,182	6,753,757	338.46	1.22	119.77	Level 4	146.12
13	2	354,183	6,753,761	338.46	1.07	23.72	Level 4	25.38
13	2	354,183	6,753,764	338.46	1.22	43.62	Level 4	53.22
13	2	354,183	6,753,766	338.46	1.83	99.49	Level 4	182.07
13	2	354,184	6,753,769	338.46	1.52	56.63	Level 4	86.08
13	2	354,184	6,753,772	338.46	1.22	22.19	Level 4	27.07
13	2	354,185	6,753,775	338.46	1.14	6.89	Level 4	7.85
13	2	354,185	6,753,778	338.46	1.22	52.04	Level 4	63.49
13	2	354,185	6,753,781	338.46	0.91	38.27	Level 4	34.83
13	2	354,186	6,753,783	338.46	0.91	9.95	Level 4 North Drive	9.05
13	2	354,188	6,753,786	338.46	0.76	6.51	Level 4 North Drive	4.95
13	2	354,189	6,753,789	338.46	1.52	3.06	Level 4 North Drive	4.65



**ASX:GA8**

**GoldArc Resources**

goldarcres.com.au

104 Colin Street  
West Perth WA 6005

+618 9420 8208



13	2	354,190	6,753,792	338.46	2.90	5.36	Level 4 North Drive	15.54
13	2	354,191	6,753,795	338.46	2.44	13.01	Level 4 North Drive	31.74
13	2	354,192	6,753,798	338.46	1.52	69.64	Level 4 North Drive	105.85
13	2	354,192	6,753,801	338.46	1.75	65.05	Level 4 North Drive	113.84
13	2	354,193	6,753,804	338.46	1.07	13.01	Level 4 North Drive	13.92
13	2	354,193	6,753,807	338.46	1.98	13.01	Level 4 North Drive	25.76
13	2	354,193	6,753,810	338.46	1.83	24.49	Level 4 North Drive	44.82
13	3	354,193	6,753,813	338.46	2.29	9.18	Level 4 North Drive	21.02
13	3	354,193	6,753,816	338.46	1.83	19.9	Level 4 North Drive	36.42
13	3	354,194	6,753,819	338.46	0.61	3.06	Level 4 North Drive	1.87
13	3	354,194	6,753,822	338.46	1.07	3.06	Level 4 North Drive	3.27
13	3	354,194	6,753,825	338.46	2.13	0.01	Level 4 North Drive	0.02
13	3	354,194	6,753,828	338.46	1.52	125.51	Level 4 North Drive	190.78
13	3	354,194	6,753,831	338.46	1.73	9.95	Level 4 North Drive	17.21
13	3	354,195	6,753,834	338.46	1.42	0.01	Level 4 North Drive	0.01
13	3	354,195	6,753,837	338.46	1.14	18.37	Level 4 North Drive	20.94
13	3	354,196	6,753,840	338.46	0.71	9.18	Level 4 North Drive	6.52
13	3	354,196	6,753,843	338.46	1.30	26.02	Level 4 North Drive	33.83
13	3	354,197	6,753,846	338.46	1.30	8.42	Level 4 North Drive	10.95
13	3	354,197	6,753,850	338.46	1.12	8.42	Level 4 North Drive	9.43
13	3	354,197	6,753,853	338.46	0.74	6.12	Level 4 North Drive	4.53
13	3	354,198	6,753,856	338.46	0.61	42.86	Level 4 North Drive	26.14
13	3	354,198	6,753,859	338.46	0.51	3.83	Level 4 North Drive	1.95
13	3	354,198	6,753,862	338.46	0.33	16.45	Level 4 North Drive	5.43
13	3	354,198	6,753,866	338.46	0.61	4.59	Level 4 North Drive	2.80
13	3	354,199	6,753,869	338.46	1.02	3.83	Level 4 North Drive	3.91
13	3	354,181	6,753,721	338.46	1.52	39.8	Level 4#	60.50
13	3	354,180	6,753,726	338.46	1.22	51.47	Level 4#	62.79
13	3	354,180	6,753,727	338.46	1.22	49.3	Level 4#	60.15
13	3	354,180	6,753,729	338.46	1.52	168.75	Level 4#	256.50
13	3	354,180	6,753,731	338.46	1.52	63.71	Level 4#	96.84
13	3	354,180	6,753,733	338.46	1.83	113.71	Level 4#	208.09
13	3	354,180	6,753,734	338.46	1.22	62.57	Level 4#	76.34
13	3	354,180	6,753,735	338.46	1.22	31.25	Level 4#	38.13
13	3	354,180	6,753,736	338.46	1.07	59.31	Level 4#	63.46
13	3	354,180	6,753,737	338.46	1.52	84.63	Level 4#	128.64
13	3	354,180	6,753,738	338.46	0.76	15.43	Level 4#	11.73
13	3	354,180	6,753,740	338.46	0.61	118.24	Level 4#	72.13
13	3	354,180	6,753,742	338.46	0.91	38.01	Level 4#	34.59
13	3	354,180	6,753,744	338.46	1.22	89.22	Level 4#	108.85
13	3	354,180	6,753,746	338.46	1.07	47.45	Level 4#	50.77
13	3	354,180	6,753,748	338.46	1.22	21.62	Level 4#	26.38
13	3	354,181	6,753,750	338.46	1.68	47.19	Level 4#	79.28
13	3	354,181	6,753,752	338.46	1.52	134.31	Level 4#	204.15
13	3	354,182	6,753,754	338.46	0.91	20.09	Level 4#	18.28
13	3	354,183	6,753,756	338.46	1.52	95.92	Level 4#	145.80
13	3	354,183	6,753,758	338.46	1.37	41.97	Level 4#	57.50
13	3	354,183	6,753,761	338.46	1.22	52.42	Level 4#	63.95
13	3	354,184	6,753,762	338.46	1.52	42.48	Level 4#	64.57
13	3	354,184	6,753,763	338.46	1.37	62.25	Level 4#	85.28
13	3	354,184	6,753,765	338.46	1.37	37.12	Level 4#	50.85
13	3	354,184	6,753,766	338.46	1.52	34.06	Level 4#	51.77
13	3	354,184	6,753,767	338.46	1.83	89.16	Level 4#	163.16
13	3	354,184	6,753,769	338.46	1.52	35.72	Level 4#	54.29
13	3	354,184	6,753,770	338.46	1.37	61.23	Level 4#	83.89
13	3	354,185	6,753,771	338.46	1.22	21.94	Level 4#	26.77
13	3	354,185	6,753,773	338.46	0.91	38.71	Level 4#	35.23
13	3	354,185	6,753,774	338.46	1.22	83.1	Level 4#	101.38
13	3	354,185	6,753,775	338.46	1.22	24.68	Level 4#	30.11
13	3	354,185	6,753,777	338.46	0.91	87.63	Level 4#	79.74
13	3	354,186	6,753,778	338.46	0.91	31.63	Level 4#	28.78
13	3	354,186	6,753,782	338.46	3.66	31.63	Level 4 North Drive#	115.77
13	3	354,187	6,753,784	338.46	4.27	13.01	Level 4 North Drive#	55.55
13	3	354,189	6,753,788	338.46	3.66	12.69	Level 4	46.45
13	3	354,190	6,753,789	338.46	3.66	12.69	Level 4 North Drive#	46.45
13	3	354,190	6,753,791	338.46	4.27	119.84	Level 4 North Drive#	511.72
13	3	354,191	6,753,792	338.46	4.27	52.74	Level 4 North Drive#	225.20
13	3	354,191	6,753,793	338.46	4.27	101.66	Level 4 North Drive#	434.09
13	3	354,191	6,753,795	338.46	4.27	109.06	Level 4 North Drive#	465.69
13	3	354,192	6,753,796	338.46	6.10	124.62	Level 4 North Drive#	760.18
13	3	354,193	6,753,799	338.46	3.66	31.82	Level 4 North Drive#	116.46
13	3	354,193	6,753,801	338.46	2.13	118.5	Level 4 North Drive#	252.41
13	3	354,193	6,753,802	338.46	2.74	30.36	Level 4 North Drive#	83.19
14	1	354,193	6,753,803	338.46	2.44	166.59	Level 4 North Drive#	406.48
14	1	354,193	6,753,804	338.46	2.13	113.78	Level 4 North Drive#	242.35
14	1	354,194	6,753,806	338.46	2.13	27.23	Level 4 North Drive#	58.00
14	1	354,194	6,753,807	338.46	2.44	8.23	Level 4 North Drive#	20.08
14	1	354,194	6,753,811	338.46	2.64	46.3	Level 4 North Drive#	122.23
14	1	354,194	6,753,813	338.46	1.22	7.4	Level 4 North Drive#	9.03
14	1	354,194	6,753,814	338.46	1.52	89.67	Level 4 North Drive#	136.30
14	1	354,194	6,753,824	338.46	0.91	58.55	Level 4 North Drive#	53.28
14	1	354,195	6,753,827	338.46	1.22	87.57	Level 4 North Drive#	106.84
14	1	354,195	6,753,829	338.46	1.22	28.06	Level 4 North Drive#	34.23
14	1	354,195	6,753,832	338.46	1.52	29.85	Level 4 North Drive#	45.37
14	1	354,195	6,753,834	338.46	1.22	54.98	Level 4 North Drive#	67.08
14	1	354,195	6,753,835	338.46	1.37	83.68	Level 4 North Drive#	114.64
14	1	354,196	6,753,838	338.46	1.22	25	Level 4 North Drive#	30.50
14	1	354,196	6,753,839	338.46	1.22	124.11	Level 4 North Drive#	151.41
14	1	354,196	6,753,840	338.46	1.22	19.9	Level 4 North Drive#	24.28
14	1	354,196	6,753,842	338.46	1.22	54.34	Level 4 North Drive#	66.29
14	1	354,197	6,753,843	338.46	1.83	42.09	Level 4 North Drive#	77.02
14	1	354,197	6,753,845	338.46	1.83	41.07	Level 4 North Drive#	75.16
14	1	354,197	6,753,846	338.46	2.44	63.78	Level 4 North Drive#	155.62
14	1	354,197	6,753,847	338.46	1.98	63.39	Level 4 North Drive#	125.51
14	1	354,198	6,753,848	338.46	2.13	49.49	Level 4 North Drive#	105.41
14	1	354,198	6,753,850	338.46	2.13	19.26	Level 4 North Drive#	41.02
14	1	354,198	6,753,853	338.46	0.61	19.26	Level 4 North Drive#	11.75
14	1	354,198	6,753,856	338.46	0.61	18.11	Level 4 North Drive#	11.05
14	1	354,198	6,753,859	338.46	0.61	2.42	Level 4 North Drive#	1.48
14	1	354,198	6,753,861	338.46	0.38	1.08	Level 4 North Drive#	0.41
14	1	354,195	6,753,732	327.4	1.47	8.8	Level 4-5 Rise	12.94
14	1	354,198	6,753,732	325.59	1.37	21.43	Level 4-5 Rise	29.36
14	1	354,200	6,753,732	323.9	1.07	6.12	Level 4-5 Rise	6.55
14	1	354,203	6,753,732	322.32	0.91	16.07	Level 4-5 Rise	14.62
14	1	354,206	6,753,732	320.36	0.91	2.3	Level 4-5 Rise	2.09



**ASX:GA8**

GoldArc Resources

goldarcres.com.au

104 Colin Street  
West Perth WA 6005

+618 9420 8208



14	1	354,210	6,753,732	317.89	0.91	4.59	Level 4-5 Rise	4.18
14	1	354,213	6,753,732	316.46	1.12	9.95	Level 4-5 Rise	11.14
14	1	354,186	6,753,716	332.27	1.68	35.97	Level 4-5 Main Shaft	60.43
14	1	354,190	6,753,716	329.85	1.68	45.15	Level 4-5 Main Shaft	75.85
14	1	354,194	6,753,715	327.66	1.37	24.49	Level 4-5 Main Shaft	33.55
14	1	354,195	6,753,715	326.71	2.29	6.12	Level 4-5 Main Shaft	14.01
14	1	354,196	6,753,715	325.84	1.91	32.14	Level 4-5 Main Shaft	61.39
14	1	354,198	6,753,715	324.84	1.98	0.77	Level 4-5 Main Shaft	1.52
14	1	354,201	6,753,715	323.17	1.83	7.65	Level 4-5 Main Shaft	14.00
14	1	354,204	6,753,715	320.99	1.52	45.92	Level 4-5 Main Shaft	69.80
14	1	354,207	6,753,714	319.16	1.37	30.61	Level 4-5 Main Shaft	41.94
14	1	354,210	6,753,714	317.4	1.52	26.02	Level 4-5 Main Shaft	39.55
14	1	354,190	6,753,717	330.18	1.83	91.2	Level 4-5 Main Shaft#	166.90
14	1	354,191	6,753,717	329.5	2.13	61.67	Level 4-5 Main Shaft#	131.36
14	1	354,192	6,753,717	328.81	1.83	22.45	Level 4-5 Main Shaft#	41.08
14	1	354,193	6,753,717	328.13	2.44	63.08	Level 4-5 Main Shaft#	153.92
14	1	354,194	6,753,717	327.44	1.83	13.52	Level 4-5 Main Shaft#	24.74
14	1	354,195	6,753,716	326.76	1.83	32.53	Level 4-5 Main Shaft#	59.53
14	1	354,199	6,753,705	324.1	1.73	14.54	Level 4-5 Rise	25.15
14	1	354,202	6,753,705	322.48	1.52	4.59	Level 4-5 Rise	6.98
14	1	354,205	6,753,705	320.86	1.32	10.71	Level 4-5 Rise	14.14
14	1	354,207	6,753,705	319.24	1.04	26.02	Level 4-5 Rise	27.06
14	1	354,210	6,753,705	317.62	1.27	6.89	Level 4-5 Rise	8.75
14	1	354,213	6,753,705	316	1.22	54.34	Level 4-5 Rise	66.29
14	1	354,210	6,753,700	316.36	1.65	18.37	Level 4-5 Stope	30.31
14	1	354,209	6,753,696	316.36	1.37	46.68	Level 4-5 Stope	63.95
14	1	354,209	6,753,661	314.98	0.61	0.01	Level 5 South Drive	0.01
14	1	354,210	6,753,665	314.98	1.52	0.77	Level 5 South Drive	1.17
14	1	354,209	6,753,668	314.98	2.44	5.74	Level 5 South Drive	14.01
14	1	354,209	6,753,671	314.98	2.08	5.36	Level 5 South Drive	11.15
14	1	354,210	6,753,674	314.98	2.08	3.83	Level 5 South Drive	7.97
14	1	354,210	6,753,677	314.98	0.69	8.42	Level 5 South Drive	5.81
14	1	354,210	6,753,680	314.98	1.52	4.59	Level 5 South Drive	6.98
14	1	354,210	6,753,683	314.98	0.61	4.59	Level 5	2.80
14	2	354,210	6,753,686	314.98	0.91	45.92	Level 5	41.79
14	2	354,210	6,753,689	314.98	0.61	22.96	Level 5	14.01
14	2	354,211	6,753,692	314.98	0.61	4.59	Level 5	2.80
14	2	354,211	6,753,695	314.98	1.07	44.39	Level 5	47.50
14	2	354,212	6,753,698	314.98	1.83	122.45	Level 5	224.08
14	2	354,213	6,753,701	314.98	0.76	11.1	Level 5	8.44
14	2	354,214	6,753,703	314.98	1.07	9.95	Level 5	10.65
14	2	354,217	6,753,709	314.98	1.75	67.35	Level 5	117.86
14	2	354,215	6,753,734	314.98	0.91	32.91	Level 5	29.95
14	2	354,215	6,753,737	314.98	1.07	9.57	Level 5	10.24
14	2	354,215	6,753,741	314.98	1.83	43.62	Level 5	79.82
14	2	354,215	6,753,744	314.98	0.91	33.67	Level 5	30.64
14	2	354,216	6,753,747	314.98	3.25	18.37	Level 5	59.70
14	2	354,216	6,753,750	314.98	3.05	12.63	Level 5	38.52
14	2	354,216	6,753,753	314.98	2.90	31.38	Level 5	91.00
14	2	354,216	6,753,757	314.98	3.05	16.07	Level 5	49.01
14	2	354,216	6,753,760	314.98	1.88	14.6	Level 5	27.45
14	2	354,216	6,753,763	314.98	1.52	13.01	Level 5	19.78
14	2	354,217	6,753,766	314.98	1.27	3.06	Level 5	3.89
14	2	354,218	6,753,769	314.98	2.18	5.36	Level 5	11.68
14	2	354,223	6,753,713	308.99	0.25	2.68	Level 5-6 Main Shaft	0.67
14	2	354,226	6,753,713	307.28	0.36	48.98	Level 5-6 Main Shaft	17.63
14	2	354,229	6,753,713	305.57	0.53	4.21	Level 5-6 Main Shaft	2.23
14	2	354,232	6,753,713	303.86	0.41	39.8	Level 5-6 Main Shaft	16.32
14	2	354,234	6,753,713	302.15	0.43	26.79	Level 5-6 Main Shaft	11.52
14	2	354,237	6,753,713	300.44	0.23	160.72	Level 5-6 Main Shaft	36.97
14	2	354,240	6,753,712	298.73	0.76	22.96	Level 5-6 Main Shaft	17.45
14	2	354,243	6,753,712	297.02	1.22	71.17	Level 5-6 Main Shaft	86.83
14	2	354,246	6,753,712	295.31	1.78	28.32	Level 5-6 Main Shaft	50.41
14	2	354,249	6,753,712	293.6	1.63	57.4	Level 5-6 Main Shaft	93.56
14	2	354,096	6,753,875	420.45	0.46	0.19	Level 0-1 Stope Cumberland	0.09
14	2	354,098	6,753,875	420.02	0.58	0.19	Level 0-1 Stope Cumberland	0.11
14	2	354,100	6,753,875	419.16	0.53	6.43	Level 0-1 Stope Cumberland	3.41
14	2	354,101	6,753,875	418.73	0.51	6.43	Level 0-1 Stope Cumberland	3.28
14	2	354,102	6,753,875	418.3	0.69	0.19	Level 0-1 Stope Cumberland	0.13
14	2	354,103	6,753,875	417.86	2.29	28.32	Level 0-1 Stope Cumberland	64.85
14	2	354,105	6,753,875	417.37	2.03	3.52	Level 0-1 Stope Cumberland	7.15
14	2	354,106	6,753,875	416.88	1.83	6.43	Level 0-1 Stope Cumberland	11.77
14	2	354,090	6,753,911	422.29	0.38	195	Level 0-1 Stope Cumberland	74.10
14	2	354,091	6,753,911	421.8	0.15	6.43	Level 0-1 Stope Cumberland	0.96
14	2	354,092	6,753,912	421.37	0.84	77.6	Level 0-1 Stope Cumberland	65.18
14	2	354,093	6,753,913	420.98	0.76	13.01	Level 0-1 Stope Cumberland	9.89
14	2	354,094	6,753,914	420.6	0.91	13.01	Level 0-1 Stope Cumberland	11.84
14	2	354,095	6,753,915	420.27	0.25	19.44	Level 0-1 Stope Cumberland	4.86
14	2	354,098	6,753,920	418.66	0.38	0.19	Level 0-1 Stope Cumberland	0.07
14	2	354,099	6,753,921	418.09	0.76	0.19	Level 0-1 Stope Cumberland	0.14
14	2	354,101	6,753,921	417.52	0.51	58.47	Level 0-1 Stope Cumberland	29.82
14	2	354,102	6,753,920	416.96	1.37	6.43	Level 0-1 Stope Cumberland	8.81
14	2	354,103	6,753,920	416.4	0.46	129.95	Level 0-1 Stope Cumberland	59.78
14	3	354,084	6,753,966	415.76	0.61	6.43	Level 1 Cumberland	3.92
14	3	354,085	6,753,964	415.76	0.61	13.01	Level 1 Cumberland	7.94
14	3	354,086	6,753,962	415.76	0.46	129.95	Level 1 Cumberland	59.78
14	3	354,087	6,753,960	415.76	0.30	0.19	Level 1 Cumberland	0.06
14	3	354,088	6,753,958	415.76	0.76	19.44	Level 1 Cumberland	14.77
14	3	354,091	6,753,952	415.76	0.10	0.19	Level 1 Cumberland	0.02
14	3	354,093	6,753,949	415.76	0.76	6.43	Level 1 Cumberland	4.89
14	3	354,094	6,753,947	415.76	0.13	0.19	Level 1 Cumberland	0.02
14	3	354,095	6,753,944	415.76	0.76	0.19	Level 1 Cumberland	0.14
14	3	354,097	6,753,942	415.76	0.61	6.43	Level 1 Cumberland	3.92
14	3	354,098	6,753,939	415.76	0.38	0.19	Level 1 Cumberland	0.07
14	3	354,099	6,753,936	415.76	0.38	0.19	Level 1 Cumberland	0.07
14	3	354,101	6,753,934	415.76	0.30	13.01	Level 1 Cumberland	3.90
14	3	354,102	6,753,931	415.76	0.30	0.19	Level 1 Cumberland	0.06
14	3	354,103	6,753,928	415.76	0.25	0.19	Level 1 Cumberland	0.05
14	3	354,104	6,753,925	415.76	0.38	6.43	Level 1 Cumberland	2.44
14	3	354,104	6,753,922	415.76	0.18	19.44	Level 1 Cumberland	3.50
14	3	354,105	6,753,920	415.76	1.68	0.19	Level 1 Cumberland	0.32
14	3	354,104	6,753,916	415.76	0.53	6.43	Level 1 Cumberland	3.41
14	3	354,104	6,753,912	415.76	0.46	19.44	Level 1 Cumberland	8.94
14	3	354,104	6,753,909	415.76	0.30	19.44	Level 1 Cumberland	5.83
14	3	354,104	6,753,906	415.76	0.36	19.44	Level 1 Cumberland	7.00

ASX:GA8

GoldArc Resources

goldarcres.com.au

104 Colin Street  
West Perth WA 6005

+618 9420 8208



14	3	354,104	6,753,902	415.76	0.25	96.58	Level 1 Cumberland	24.15
14	3	354,104	6,753,899	415.76	0.46	84.49	Level 1 Cumberland	38.87
14	3	354,105	6,753,896	415.76	0.25	51.89	Level 1 Cumberland	12.97
14	3	354,105	6,753,892	415.76	0.66	51.89	Level 1 Cumberland	34.25
14	3	354,105	6,753,891	415.76	0.53	13.01	Level 1 Cumberland	6.90
14	3	354,106	6,753,890	415.76	0.30	6.43	Level 1 Cumberland	1.93
14	3	354,109	6,753,878	415.76	0.61	19.44	Level 1 Cumberland	11.86
14	3	354,108	6,753,875	415.76	1.68	6.43	Level 1 Cumberland	10.80
14	3	354,123	6,753,891	403.56	0.38	25.87	Level 1-2 Stope Cumberland	9.83
14	3	354,123	6,753,893	402	0.91	19.44	Level 1-2 Stope Cumberland	17.69
14	3	354,124	6,753,895	401.84	1.22	19.44	Level 1-2 Stope Cumberland	23.72
14	3	354,125	6,753,896	402	1.22	19.44	Level 1-2 Stope Cumberland	23.72
14	3	354,126	6,753,897	402.17	0.51	0.19	Level 1-2 Stope Cumberland	0.10
14	3	354,125	6,753,898	402.17	0.41	38.88	Level 1-2 Stope Cumberland	15.94
14	3	354,123	6,753,899	402.73	0.76	71.48	Level 1-2 Stope Cumberland	54.32
14	3	354,122	6,753,900	402.74	0.76	13.01	Level 1-2 Stope Cumberland	9.89
14	3	354,120	6,753,903	402.48	0.28	19.44	Level 1-2 Stope Cumberland	5.44
14	3	354,120	6,753,905	402.14	0.58	19.44	Level 1-2 Stope Cumberland	11.28
14	3	354,120	6,753,907	401.58	0.76	19.44	Level 1-2 Stope Cumberland	14.77
14	3	354,120	6,753,908	401.3	0.51	26.02	Level 1-2 Stope Cumberland	13.27
14	3	354,117	6,753,907	404.04	0.76	25.87	Level 1-2 Stope Cumberland	19.66
14	3	354,113	6,753,905	407.02	0.25	6.43	Level 1-2 Stope Cumberland	1.61
14	3	354,110	6,753,904	409.65	0.30	116.94	Level 1-2 Stope Cumberland	35.08
14	3	354,106	6,753,902	412.35	0.20	13.01	Level 1-2 Stope Cumberland	2.60
15	1	354,106	6,753,904	412.38	0.08	6.43	Level 1-2 Rise Cumberland	0.51
15	1	354,109	6,753,906	409.72	0.23	6.43	Level 1-2 Rise Cumberland	1.48
15	1	354,112	6,753,907	407.13	0.25	71.48	Level 1-2 Rise Cumberland	17.87
15	1	354,115	6,753,908	404.54	0.25	84.49	Level 1-2 Rise Cumberland	21.12
15	1	354,118	6,753,910	402.45	0.56	64.9	Level 1-2 Rise Cumberland	36.34
15	1	354,119	6,753,910	401.22	0.66	25.87	Level 1-2 Rise Cumberland	17.07
15	1	354,126	6,753,920	394.79	0.51	13.01	Level 1-2 Stope Cumberland	6.64
15	1	354,124	6,753,922	395.84	0.61	0.19	Level 1-2 Stope Cumberland	0.12
15	1	354,124	6,753,924	397.22	0.61	13.01	Level 1-2 Stope Cumberland	7.94
15	1	354,124	6,753,926	398.54	0.76	6.43	Level 1-2 Stope Cumberland	4.89
15	1	354,122	6,753,926	402	0.76	6.43	Level 1-2 Stope Cumberland	4.89
15	1	354,121	6,753,927	404.42	0.76	71.48	Level 1-2 Stope Cumberland	54.32
15	1	354,120	6,753,928	404.42	0.46	51.89	Level 1-2 Stope Cumberland	23.87
15	1	354,119	6,753,930	402.91	0.46	6.43	Level 1-2 Stope Cumberland	2.96
15	1	354,119	6,753,931	400.31	0.30	6.43	Level 1-2 Stope Cumberland	1.93
15	1	354,119	6,753,933	397.49	0.46	13.01	Level 1-2 Stope Cumberland	5.98
15	1	354,120	6,753,934	395.52	0.46	6.43	Level 1-2 Stope Cumberland	2.96
15	1	354,122	6,753,935	394.89	0.30	13.01	Level 1-2 Stope Cumberland	3.90
15	1	354,111	6,753,965	395.32	1.07	13.01	Level 1-2 Stope Cumberland	13.92
15	1	354,139	6,753,967	396.22	0.91	6.43	Level 1-2 Stope Cumberland	5.85
15	1	354,107	6,753,969	397.2	0.61	19.44	Level 1-2 Stope Cumberland	11.86
15	2	354,114	6,753,959	394.54	0.15	0.19	Level 2 Cumberland	0.03
15	2	354,114	6,753,958	394.54	0.20	19.44	Level 2 Cumberland	3.89
15	2	354,115	6,753,956	394.54	0.25	19.44	Level 2 Cumberland	4.86
15	2	354,115	6,753,955	394.54	0.46	14.54	Level 2 Cumberland	6.69
15	2	354,116	6,753,954	394.54	0.46	14.54	Level 2 Cumberland	6.69
15	2	354,116	6,753,953	394.54	0.76	6.43	Level 2 Cumberland	4.89
15	2	354,117	6,753,952	394.54	0.46	6.43	Level 2 Cumberland	2.96
15	2	354,117	6,753,951	394.54	0.46	6.43	Level 2 Cumberland	2.96
15	2	354,118	6,753,949	394.54	0.46	6.43	Level 2 Cumberland	2.96
15	2	354,118	6,753,948	394.54	0.61	58.47	Level 2 Cumberland	35.67
15	2	354,119	6,753,947	394.54	0.61	6.43	Level 2 Cumberland	3.92
15	2	354,119	6,753,946	394.54	0.15	0.19	Level 2 Cumberland	0.03
15	2	354,120	6,753,945	394.54	0.15	0.19	Level 2 Cumberland	0.03
15	2	354,120	6,753,943	394.54	0.20	0.19	Level 2 Cumberland	0.04
15	2	354,121	6,753,942	394.54	0.30	6.43	Level 2 Cumberland	1.93
15	2	354,121	6,753,941	394.54	0.20	19.44	Level 2 Cumberland	3.89
15	2	354,122	6,753,940	394.54	0.25	0.19	Level 2 Cumberland	0.05
15	2	354,122	6,753,939	394.54	0.38	25.87	Level 2 Cumberland	9.83
15	2	354,123	6,753,937	394.54	0.46	19.44	Level 2 Cumberland	8.94
15	2	354,123	6,753,936	394.54	0.25	0.19	Level 2 Cumberland	0.05
15	2	354,123	6,753,935	394.54	0.30	38.88	Level 2 Cumberland	11.66
15	2	354,124	6,753,930	394.54	0.33	13.01	Level 2 Cumberland	4.29
15	2	354,125	6,753,927	394.54	0.66	0.19	Level 2 Cumberland	0.13
15	2	354,125	6,753,925	394.54	0.58	6.43	Level 2 Cumberland	3.73
15	2	354,125	6,753,924	394.54	1.02	13.01	Level 2 Cumberland	13.27
15	2	354,126	6,753,922	394.54	0.91	6.43	Level 2 Cumberland	5.85
15	2	354,126	6,753,920	394.54	0.91	0.19	Level 2 Cumberland	0.17
15	2	354,126	6,753,919	394.54	0.61	0.19	Level 2 Cumberland	0.12
15	2	354,127	6,753,917	394.54	0.46	0.19	Level 2 Cumberland	0.09
15	2	354,128	6,753,914	394.54	0.41	0.19	Level 2 Cumberland	0.08
15	2	354,129	6,753,912	394.54	0.46	13.01	Level 2 Cumberland	5.98
15	2	354,134	6,753,908	394.54	0.30	0.19	Level 2 Cumberland	0.06
15	2	354,136	6,753,906	394.54	0.38	25.87	Level 2 Cumberland	9.83
15	2	354,138	6,753,904	394.54	0.61	38.88	Level 2 Cumberland	23.72
15	2	354,140	6,753,902	394.54	0.38	6.43	Level 2 Cumberland	2.44
15	2	354,153	6,753,891	371.88	0.61	97.5	Level 3 Cumberland	59.48
15	2	354,148	6,753,889	371.88	0.53	0.19	Level 3 Cumberland	0.10
15	2	354,148	6,753,886	371.88	0.13	0.19	Level 3 Cumberland	0.02
15	2	354,148	6,753,883	371.88	0.10	0.19	Level 3 Cumberland	0.02
15	2	354,148	6,753,876	371.88	0.30	0.19	Level 3 Cumberland	0.06
15	2	354,131	6,753,912	391.65	0.61	13.01	Level 2-3 Stope Cumberland	7.94
15	2	354,133	6,753,913	391.11	0.61	6.43	Level 2-3 Stope Cumberland	3.92
15	2	354,133	6,753,913	391.11	0.76	25.87	Level 2-3 Stope Cumberland	19.66
15	2	354,135	6,753,912	389.91	0.74	0.19	Level 2-3 Stope Cumberland	0.14
15	2	354,136	6,753,910	389.64	0.76	25.87	Level 2-3 Stope Cumberland	19.66
15	2	354,135	6,753,909	390.08	0.91	19.44	Level 2-3 Stope Cumberland	17.69
15	2	354,145	6,753,902	394.54	0.46	38.88	Level 2-3 Stope Cumberland	17.88
15	2	354,148	6,753,902	394.54	0.46	13.01	Level 2-3 Stope Cumberland	5.98
15	2	354,151	6,753,902	386.4	0.36	168.37	Level 2-3 Stope Cumberland	60.61
15	2	354,154	6,753,902	384.23	0.15	51.89	Level 2-3 Stope Cumberland	7.78
15	2	354,151	6,753,903	385.67	0.30	51.89	Level 2-3 Stope Cumberland	15.57
15	2	354,151	6,753,904	385.22	0.69	13.01	Level 2-3 Stope Cumberland	8.98
15	2	354,151	6,753,905	384.78	0.66	19.44	Level 2-3 Stope Cumberland	12.83
15	2	354,151	6,753,906	384.33	0.51	38.88	Level 2-3 Stope Cumberland	19.83
15	2	354,150	6,753,907	383.5	0.51	13.01	Level 2-3 Stope Cumberland	6.64
15	3	354,150	6,753,909	382.95	0.36	19.44	Level 2-3 Stope Cumberland	7.00
15	3	354,150	6,753,910	382.39	0.69	6.43	Level 2-3 Stope Cumberland	4.44
15	3	354,149	6,753,911	381.86	0.23	142.96	Level 2-3 Stope Cumberland	32.88
15	3	354,149	6,753,912	381.39	0.61	19.44	Level 2-3 Stope Cumberland	11.86
15	3	354,148	6,753,913	380.7	0.76	25.87	Level 2-3 Stope Cumberland	19.66

ASX:GA8

GoldArc Resources

goldarcres.com.au

104 Colin Street  
West Perth WA 6005

+618 9420 8208



15	3	354,142	6,753,910	386.59	1.07	38.88	Level 2-3 Stope Cumberland	41.60
15	3	354,140	6,753,910	388.64	1.42	0.19	Level 2-3 Stope Cumberland	0.27
15	3	354,139	6,753,913	389.52	1.12	0.19	Level 2-3 Stope Cumberland	0.21
15	3	354,139	6,753,916	389.41	0.76	6.43	Level 2-3 Stope Cumberland	4.89
15	3	354,138	6,753,918	389.71	1.07	6.43	Level 2-3 Stope Cumberland	6.88
15	3	354,139	6,753,919	389.53	1.07	32.45	Level 2-3 Stope Cumberland	34.72
15	3	354,139	6,753,920	388.68	1.37	0.19	Level 2-3 Stope Cumberland	0.26
15	3	354,142	6,753,921	386.19	0.66	181.99	Level 2-3 Stope Cumberland	120.11
15	3	354,144	6,753,920	385.03	1.37	6.43	Level 2-3 Stope Cumberland	8.81
15	3	354,145	6,753,918	384.07	0.76	25.87	Level 2-3 Stope Cumberland	19.66
15	3	354,145	6,753,916	383.57	0.30	38.88	Level 2-3 Stope Cumberland	11.66
15	3	354,146	6,753,915	383	0.41	13.01	Level 2-3 Stope Cumberland	5.33
15	3	354,146	6,753,913	382.76	1.37	19.44	Level 2-3 Stope Cumberland	26.63
15	3	354,154	6,753,903	382.92	0.61	142.96	Level 2-3 Stope Cumberland	87.21
15	3	354,154	6,753,905	382.23	0.69	154.59	Level 2-3 Stope Cumberland	106.67
15	3	354,153	6,753,908	381.53	0.25	45.46	Level 2-3 Stope Cumberland	11.37
15	3	354,152	6,753,910	380.93	0.30	25.87	Level 2-3 Stope Cumberland	7.76
15	3	354,151	6,753,912	380.35	0.20	19.44	Level 2-3 Stope Cumberland	3.89
15	3	354,150	6,753,914	379.6	0.08	13.01	Level 2-3 Stope Cumberland	1.04
15	3	354,150	6,753,917	377.88	0.18	6.43	Level 2-3 Stope Cumberland	1.16
15	3	354,160	6,753,921	374.45	0.13	25.87	Level 2-3 Stope Cumberland	3.36
15	3	354,160	6,753,922	373.85	0.30	123.52	Level 2-3 Stope Cumberland	37.06
15	3	354,160	6,753,923	373.33	0.76	6.43	Level 2-3 Stope Cumberland	4.89
15	3	354,151	6,753,922	376.41	0.38	181.99	Level 2-3 Stope Cumberland	69.16
15	3	354,150	6,753,923	375.65	0.69	29.54	Level 2-3 Stope Cumberland	20.38
15	3	354,152	6,753,925	374.78	0.61	19.44	Level 2-3 Stope Cumberland	11.86
15	3	354,154	6,753,925	374.31	0.38	6.43	Level 2-3 Stope Cumberland	2.44
15	3	354,155	6,753,926	373.93	0.41	0.19	Level 2-3 Stope Cumberland	0.08
15	3	354,156	6,753,926	373.54	0.64	0.19	Level 2-3 Stope Cumberland	0.12
15	3	354,157	6,753,927	373.15	0.48	13.01	Level 2-3 Stope Cumberland	6.24
15	3	354,157	6,753,927	372.78	0.53	0.19	Level 2-3 Stope Cumberland	0.10
16	2	354,137	6,753,968	371.88	0.33	0.19	Level 3 Cumberland	0.06
16	2	354,138	6,753,965	371.88	0.15	0.19	Level 3 Cumberland	0.03
16	2	354,139	6,753,962	371.88	0.10	0.19	Level 3 Cumberland	0.02
16	3	354,140	6,753,960	371.88	0.18	6.43	Level 3 Cumberland	1.16
16	3	354,140	6,753,959	371.88	0.61	6.43	Level 3 Cumberland	3.92
16	3	354,141	6,753,957	371.88	0.69	25.87	Level 3 Cumberland	17.85
16	3	354,141	6,753,956	371.88	0.51	6.43	Level 3 Cumberland	3.28
16	3	354,142	6,753,954	371.88	0.51	38.88	Level 3 Cumberland	19.83
16	3	354,143	6,753,953	371.88	0.20	0.19	Level 3 Cumberland	0.04
16	3	354,145	6,753,950	371.88	0.15	0.19	Level 3 Cumberland	0.03
16	3	354,147	6,753,948	371.88	0.25	155.97	Level 3 Cumberland	38.99
16	3	354,149	6,753,945	371.88	0.23	6.43	Level 3 Cumberland	1.48
16	3	354,152	6,753,943	371.88	0.38	13.01	Level 3 Cumberland	4.94
16	3	354,154	6,753,940	371.88	0.46	0.19	Level 3 Cumberland	0.09
16	3	354,155	6,753,939	371.88	0.69	6.43	Level 3 Cumberland	4.44
16	3	354,156	6,753,938	371.88	0.46	19.44	Level 3 Cumberland	8.94
16	3	354,157	6,753,935	371.88	0.18	6.43	Level 3 Cumberland	1.16
16	3	354,158	6,753,933	371.88	0.33	155.97	Level 3 Cumberland	51.47
16	3	354,158	6,753,932	371.88	1.83	8.11	Level 3 Cumberland	14.84
16	3	354,159	6,753,930	371.88	1.45	0.19	Level 3 Cumberland	0.28
16	3	354,159	6,753,928	371.88	1.42	0.19	Level 3 Cumberland	0.27
16	3	354,160	6,753,927	371.88	1.68	0.19	Level 3 Cumberland	0.32
16	3	354,174	6,753,949	350.47	0.86	0.19	Level 4 Cumberland	0.16
16	3	354,175	6,753,947	350.47	0.71	71.48	Level 4 Cumberland	50.75
16	3	354,175	6,753,945	350.47	0.30	77.91	Level 4 Cumberland	23.37
16	3	354,176	6,753,943	350.47	0.20	32.45	Level 4 Cumberland	6.49
16	3	354,185	6,753,924	348.17	0.51	13.01	Level 4-5 Stope Cumberland	6.64
16	3	354,186	6,753,924	346.83	0.51	6.43	Level 4-5 Stope Cumberland	3.28
16	3	354,188	6,753,924	345.49	0.15	19.44	Level 4-5 Stope Cumberland	2.92
16	3	354,189	6,753,924	344.16	0.15	45.46	Level 4-5 Stope Cumberland	6.82
16	3	354,191	6,753,923	342.82	0.20	0.19	Level 4-5 Stope Cumberland	0.04
17	1	354,192	6,753,923	341.48	0.20	0.19	Level 4-5 Stope Cumberland	0.04
17	1	354,182	6,753,931	347.91	2.46	154.59	Level 4-5 Stope Cumberland	380.29
17	1	354,183	6,753,931	346.79	1.75	11.94	Level 4-5 Stope Cumberland	20.90
17	1	354,184	6,753,932	345.68	1.42	0.19	Level 4-5 Stope Cumberland	0.27
17	1	354,186	6,753,932	344.55	1.91	0.19	Level 4-5 Stope Cumberland	0.36
17	1	354,187	6,753,932	343.42	0.61	6.43	Level 4-5 Stope Cumberland	3.92
17	1	354,188	6,753,932	342.29	0.66	6.43	Level 4-5 Stope Cumberland	4.24
17	1	354,189	6,753,932	341.17	0.51	0.19	Level 4-5 Stope Cumberland	0.10
17	1	354,190	6,753,932	340.2	1.07	0.19	Level 4-5 Stope Cumberland	0.20
17	1	354,191	6,753,933	339.32	1.37	17.3	Level 4-5 Stope Cumberland	23.70
17	1	354,192	6,753,935	338.48	1.65	0.19	Level 4-5 Stope Cumberland	0.31
17	1	354,193	6,753,936	337.71	0.46	0.19	Level 4-5 Stope Cumberland	0.09
17	1	354,193	6,753,937	336.97	0.10	19.44	Level 4-5 Stope Cumberland	1.94
17	1	354,194	6,753,938	336.4	2.13	0.19	Level 4-5 Stope Cumberland	0.40
17	1	354,194	6,753,940	336.2	2.49	5.36	Level 4-5 Stope Cumberland	13.35
17	1	354,194	6,753,942	336.12	2.06	35.51	Level 4-5 Stope Cumberland	73.15
17	1	354,194	6,753,943	336.04	1.91	29.54	Level 4-5 Stope Cumberland	56.42
17	1	354,194	6,753,945	335.96	3.02	37.81	Level 4-5 Stope Cumberland	114.19
17	1	354,195	6,753,946	335.81	2.59	28.47	Level 4-5 Stope Cumberland	73.74
17	1	354,195	6,753,948	335.48	2.18	68.27	Level 4-5 Stope Cumberland	148.83
17	1	354,196	6,753,949	334.86	1.68	70.87	Level 4-5 Stope Cumberland	119.06
17	1	354,196	6,753,950	333.96	1.32	53.73	Level 4-5 Stope Cumberland	70.92
17	1	354,198	6,753,951	332.91	1.22	41.63	Level 4-5 Stope Cumberland	50.79
17	1	354,199	6,753,951	331.8	0.99	47.45	Level 4-5 Stope Cumberland	46.98
17	1	354,200	6,753,952	330.68	0.97	0.19	Level 4-5 Stope Cumberland	0.18
17	1	354,210	6,753,952	329.57	0.91	88.78	Level 4-5 Stope Cumberland	80.79
17	2	354,203	6,753,870	326.93	2.41	21.12	Level 5-6 Stope Cumberland	50.90
17	2	354,205	6,753,870	325.12	2.03	0.19	Level 5-6 Stope Cumberland	0.39
17	2	354,208	6,753,870	323.3	1.83	0.19	Level 5-6 Stope Cumberland	0.35
17	2	354,202	6,753,953	326.62	1.07	9.64	Level 5-6 Stope Cumberland	10.31
17	2	354,203	6,753,953	325.92	1.37	3.52	Level 5-6 Stope Cumberland	4.82
17	2	354,205	6,753,953	325.02	1.83	5.05	Level 5-6 Stope Cumberland	9.24
17	2	354,206	6,753,953	324.15	0.51	51.89	Level 5-6 Stope Cumberland	26.46
17	2	354,207	6,753,952	323.5	0.51	0.19	Level 5-6 Stope Cumberland	0.10
17	2	354,207	6,753,951	323.33	0.86	6.43	Level 5-6 Stope Cumberland	5.53
17	2	354,207	6,753,949	323.16	0.46	13.01	Level 5-6 Stope Cumberland	5.98
17	2	354,208	6,753,947	322.99	0.46	0.19	Level 5-6 Stope Cumberland	0.09
17	2	354,208	6,753,946	322.75	1.68	38.27	Level 5-6 Stope Cumberland	64.29
17	2	354,209	6,753,945	321.91	0.91	13.01	Level 5-6 Stope Cumberland	11.84
17	2	354,211	6,753,945	321.01	1.07	64.9	Level 5-6 Stope Cumberland	69.44
17	2	354,212	6,753,946	320.1	1.12	51.89	Level 5-6 Stope Cumberland	58.12
17	2	354,213	6,753,946	319.2	0.61	60	Level 5-6 Stope Cumberland	36.60
17	2	354,214	6,753,946	318.36	0.41	38.88	Level 5-6 Stope Cumberland	15.94

17	2	354,216	6,753,947	317.54	0.38	0.19	Level 5-6 Stope Cumberland	0.07
17	2	354,217	6,753,948	316.72	0.51	0.19	Level 5-6 Stope Cumberland	0.10
17	3	354,218	6,753,948	315.91	0.48	51.89	Level 5-6 Stope Cumberland	24.91
17	3	354,219	6,753,949	315.06	0.51	0.19	Level 5-6 Stope Cumberland	0.10
17	3	354,221	6,753,949	314.2	0.71	13.01	Level 5-6 Stope Cumberland	9.24
17	3	354,222	6,753,948	313.49	0.79	45.46	Level 5-6 Stope Cumberland	35.91
17	3	354,223	6,753,947	312.79	0.81	58.47	Level 5-6 Stope Cumberland	47.36
17	3	354,224	6,753,946	312.1	1.37	0.19	Level 5-6 Stope Cumberland	0.26
17	3	354,225	6,753,945	311.37	1.07	6.43	Level 5-6 Stope Cumberland	6.88
17	3	354,226	6,753,944	310.52	1.68	0.19	Level 5-6 Stope Cumberland	0.32
17	3	354,227	6,753,945	309.67	2.24	0.19	Level 5-6 Stope Cumberland	0.43
17	3	354,228	6,753,945	308.84	3.20	13.01	Level 5-6 Stope Cumberland	41.63
17	3	354,220	6,753,963	308.61	2.34	0.19	Level 6 Cumberland	0.44
17	3	354,228	6,753,956	308.61	1.00	0.19	Level 6 X-Cut Cumberland	0.19
17	3	354,229	6,753,946	306.36	0.61	51.12	Level 6-7 Stope Cumberland	31.18
17	3	354,231	6,753,946	304.72	1.78	0.19	Level 6-7 Stope Cumberland	0.34
17	3	354,233	6,753,946	303.09	1.98	13.47	Level 6-7 Stope Cumberland	26.67
17	3	354,234	6,753,944	301.77	2.13	14.85	Level 6-7 Stope Cumberland	31.63
17	3	354,235	6,753,942	301.42	0.99	38.88	Level 6-7 Stope Cumberland	38.49
18	2	354,271	6,753,578	263.62	1.78	0.19	Level 7 Englishman Reef	0.34
18	2	354,271	6,753,577	263.62	1.83	9.18	Level 7 Englishman Reef	16.80
19	1	354,213	6,753,609	314.98	0.30	3.06	Level 5 Englishman Reef	0.92
19	1	354,214	6,753,603	314.98	0.18	6.12	Level 5 Englishman Reef	1.10
19	1	354,219	6,753,592	314.98	0.15	10.71	Level 5 Englishman Reef	1.61
19	1	354,226	6,753,586	314.98	1.07	0.19	Level 5 Englishman Reef	0.20
19	1	354,224	6,753,575	314.98	0.38	42.86	Level 5 Englishman Reef	16.29
19	1	354,223	6,753,572	314.98	0.38	53.57	Level 5 Englishman Reef	20.36
19	1	354,222	6,753,568	314.98	0.91	15.31	Level 5 Englishman Reef	13.93
23	1	354,188	6,753,786	338.46	3.66	49.87	Level 4	182.52

**ASX:GA8**

**GoldArc Resources**

goldarcres.com.au

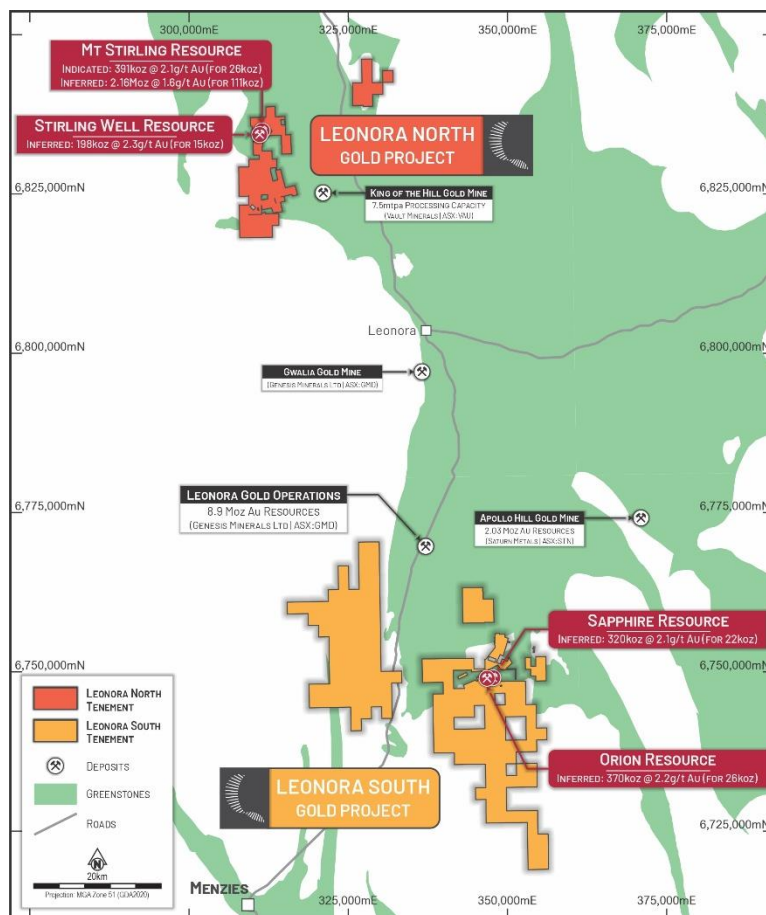
104 Colin Street  
West Perth WA 6005

+618 9420 8208



## About GoldArc Resources

**GoldArc Resources Limited (ASX:GA8)** is a Western Australian focused mineral exploration company with a portfolio of highly prospective gold projects located in the world-class Leonora and Kookynie districts of the Eastern Goldfields. GoldArc's strategy is focused on growing its existing 200,000oz JORC resource base and making new, large-scale discoveries through a disciplined and systematic approach to exploration.



## GoldArc Resources Total JORC Mineral Resources

GoldArc Gold Projects	Category	Tonnes	Gold Grade (g/t Au)	Gold Ounces
Leonora North - Mt Stirling	Indicated	391,000	2.1	26,000
	Inferred	2,158,000	1.6	111,000
Leonora North - Stirling Well	Inferred	198,000	2.3	15,000
Leonora South - Orion	Inferred	370,000	2.2	26,409
Leonora South - Sapphire	Inferred	320,000	2.1	21,605
<b>Total</b>		<b>3,437,000</b>	<b>1.82</b>	<b>200,064</b>

**ASX:GA8**

GoldArc Resources

goldarcres.com.au

104 Colin Street  
West Perth WA 6005

+618 9420 8208

