



## September 2025 Quarterly Activities Report

Wide zones of shallow gold mineralisation intersected in initial drilling at the Walkers Hill gold target in NSW, with planning underway for new exploration programs in Q4 2025

### Highlights:

#### Lachlan Projects, NSW

##### Walkers Hill Gold Project <sup>1</sup>

- 5-hole, 857m Reverse Circulation drilling program completed at the new Sheeppark Prospect.
- The drilling tested part of the extensive Walkers Hill gold-in-soil geochemical anomaly, coincident with a strong Pole-Dipole Induced Polarisation (PDIP) chargeability feature.
- Four of five RC holes intersected broad zones of shallow, low-grade gold mineralisation, with assay results including:
  - SYRC0001
    - 10m at 0.36g/t Au from 22m; and
    - 41m at 0.29g/t Au from 162m
  - SYRC0002
    - 16m at 0.38g/t Au from 124m, including 4m at 0.99 g/t Au
  - SYRC0003
    - 42m at 0.44g/t Au from 4m, including 8m at 0.85g/t Au
  - SYRC0004
    - 24m at 0.58g/t Au from 124m, including 14m at 0.86g/t Au
- The gold mineralisation intersected is associated with thin quartz veining, alteration and pyrite in a broad north-east trend.
- Follow-up exploration and drilling programs are currently being planned.
- Sheeppark is part of the larger Walkers Hill gold-in-soil anomaly, located along a major geological contact and stretching over 4.0km north-west of the recent drilling.

#### Macquarie Arc Projects, New South Wales

##### Yarindury Project <sup>2</sup>

- Three-line, 13km ground geophysical survey completed over the Yarindury Project.
- Drilling programs are planned at new, buried geophysical targets.

##### East Peak Hill Project <sup>3</sup>

- Initial auger drilling program was partially completed. Due to deeper than expected cover, an Aircore drilling program is scheduled to complete the program.

#### Corporate

- Royalty cash receipts from the Wonmunna Iron Ore Project of \$1.55 million received for the quarter.
- Talisman remains well-funded with cash on hand at 30 September of \$4.07 million





## Lachlan Copper-Gold Project, NSW<sup>1</sup>

The 100%-owned Lachlan Project spans the Canbelego-Mineral Hill Volcanic Belt between Condobolin and Canbelego in NSW and is prospective for large-scale porphyry copper-gold and VMS style copper-lead-zinc-silver deposits (see Figure 1).

A comprehensive geological, geochemical and geophysical review across all TLM Mineral Hill-Canbelego Volcanic Belt (MHCVB) tenure was completed during the June Quarter.

This review identified two high-priority targets in the Walkers Hill gold geochemical trend, with an initial 5-hole/857m Reverse Circulation (RC) drilling program completed over the new Sheeppark Prospect during the September Quarter.

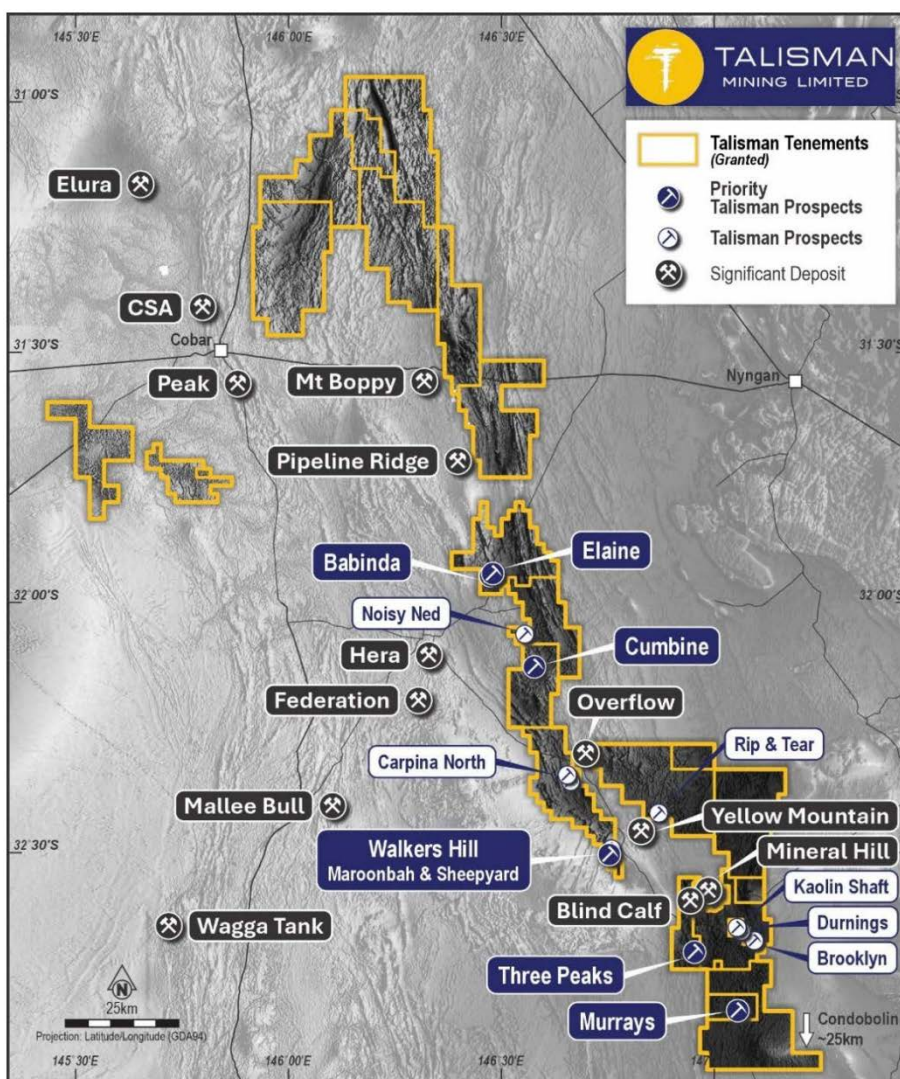


Figure 1: Talisman's Lachlan Project which covers the Mineral Hill-Canbelego Volcanic Belt (MHCVB) on a regional TMI Airborne Magnetic image. High-grade base metals and copper-gold deposits in the belt include CSA, Peak, Hera, Federation and Mineral Hill. Other Talisman tenure in the area (to the east and south-east of Cobar and north of Condobolin) is also shown.

<sup>1</sup> ASX: TLM -15 September 2025.





For personal use only

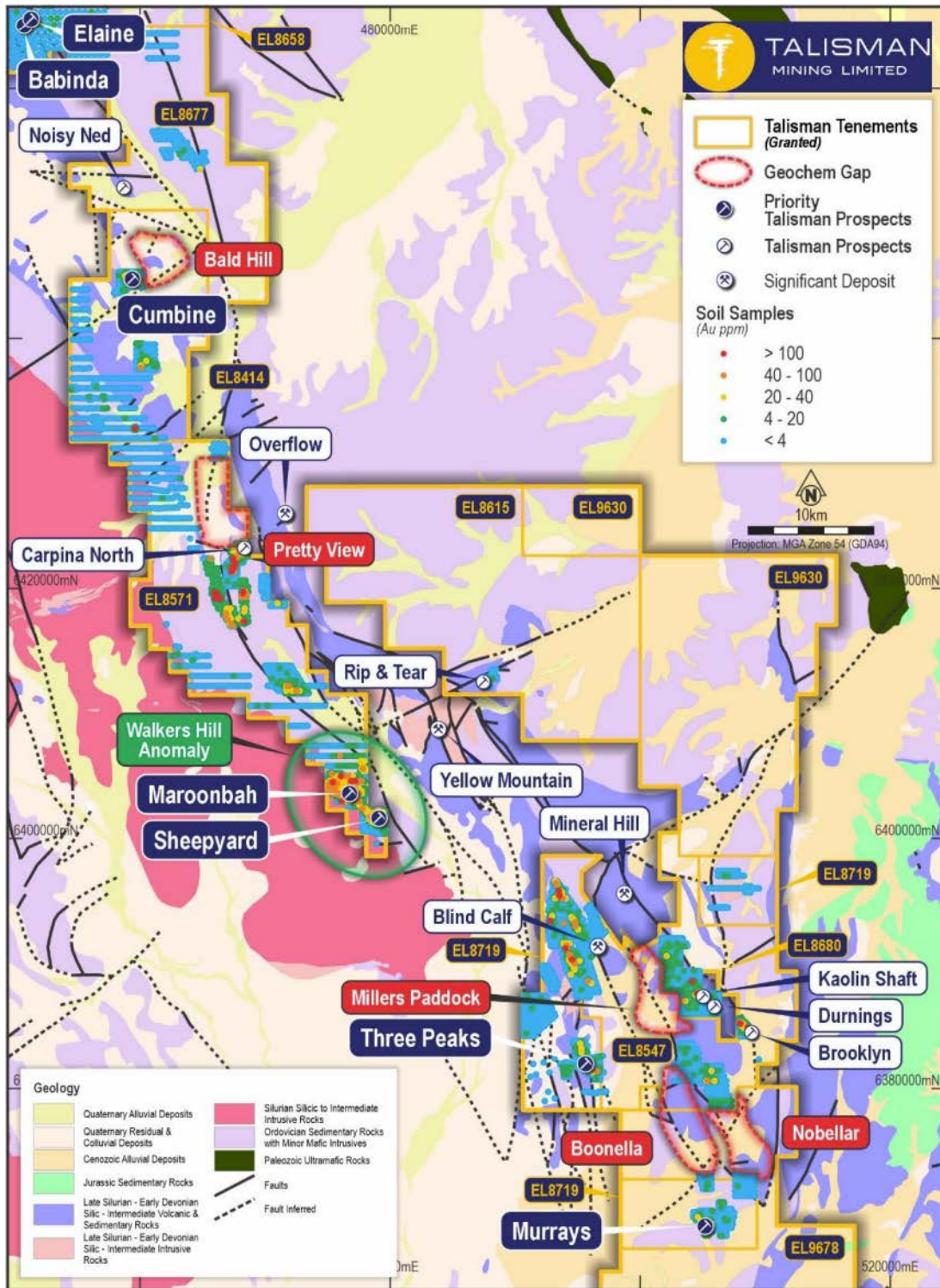


Figure 2: Lachlan Projects southern tenements area with geology and gold-in-soil geochemistry. The Walkers Hill gold-in-soil geochemical trend (highlighted) is the largest and most coherent trend in the area, spanning an area of approximately 10km by 2.5km, and is divided into the Maroonbah and Sheeppark prospects. Planned geochemical coverage in-fill Auger drilling programs across prospective trends are also highlighted.





## Walkers Hill<sup>1</sup>

The Walkers Hill Project contains the extensive Walkers Hill gold-in-soil trend, extending over an area of approximately 4.5km by 2.0km

Historical exploration results (see TLM ASX announcements 17th June and 25th July) within the Sheeppark Prospect (Figures 3 and 4) of the Walkers Hill Project include:

- RC:
  - 40m at 0.46g/t Au from 3m (PMV005).
  - 12m at 0.38g/t Au from surface (TMY027).
  - All mineralised holes ended in oxide and drilling was limited to 60m below surface.
- A Pole Dipole Induced Polarisation (PDIP) geophysical survey on two lines completed in 2023 revealed a significant chargeability anomaly below the mineralised historical RC drill intercepts.

During August 2025, Talisman completed a total of five Reverse Circulation (RC) holes for 857m to test both historical near-surface mineralisation and the PDIP chargeability feature, with holes designed up to 200m depth (Figures 3 to 6).

The drilling tested part of an extensive gold-in-soil geochemical anomaly above the strong Pole-Dipole Induced Polarisation (PDIP) chargeability.

Four of five intersected broad zones of low-grade gold mineralisation, with laboratory assays including:

- SYRC0001
  - 10m at 0.36g/t Au from 22m; and
  - 41m at 0.29g/t Au from 162m
- SYRC0002
  - 6m at 0.38g/t Au from 124m including 4m at 0.99g/t Au
- SYRC0003
  - 42m at 0.44g/t Au from 4m including 8m at 0.85g/t Au
- SYRC0004
  - 24m at 0.58g/t Au from 124m including 14m at 0.86g/t Au

Surface mapping and geological logging of RC chips show shallow gold mineralisation within the Ordovician-age Girilambone metasediments occurs within thin quartz veining interpreted to be in a broad north-east trending fault zone. Deeper gold mineralisation encountered in holes SYRC0001, SYRC0002 and SYRC0004 is associated with thin quartz veining and selvedge disseminated pyrite mineralisation, coincident with the position of the PDIP conductor.

Shallow and deeper gold mineralisation is anomalous in arsenic, antimony and tungsten, typical of orogenic-style gold sulphide mineralisation. Several other mineralised trends have been identified within the Sheeppark gold-in-soil anomaly which warrant follow-up for both the near-surface oxide and deeper hypogene mineralisation. A follow up Aircore drilling program is planned.

Sheeppark is part of a larger, Walkers Hill Project gold-in-soil trend along a major geological contact which stretches for over 4.0km to the north-west of the recent drilling.



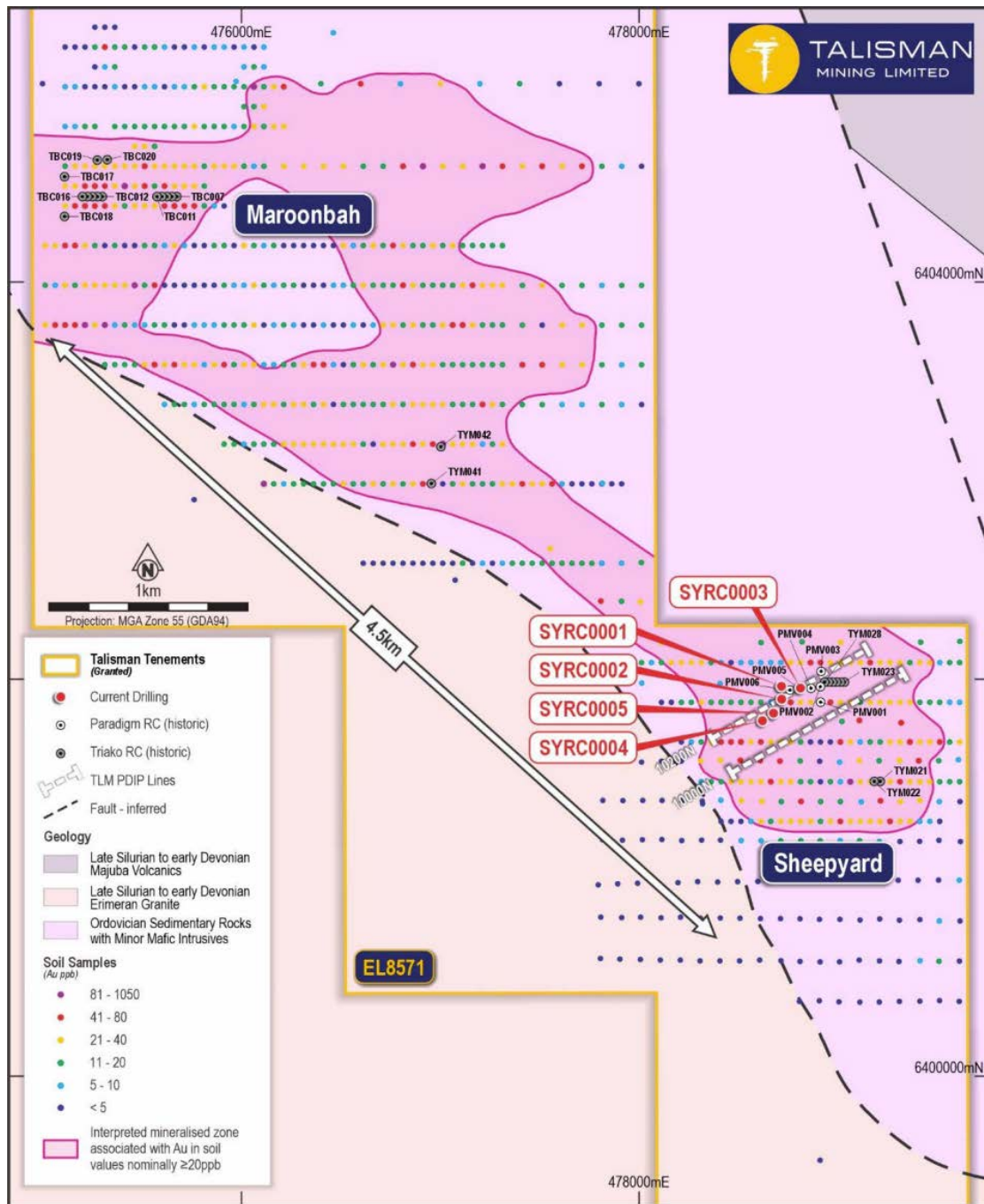


Figure 3: The Walkers Hill Project gold-in-soil geochemical trend. The trend contains the Maroonbah and Sheepyard Prospects. At Sheepyard, the location of PDIP geophysical survey lines, historical and completed RC drilling is shown.





For personal use only

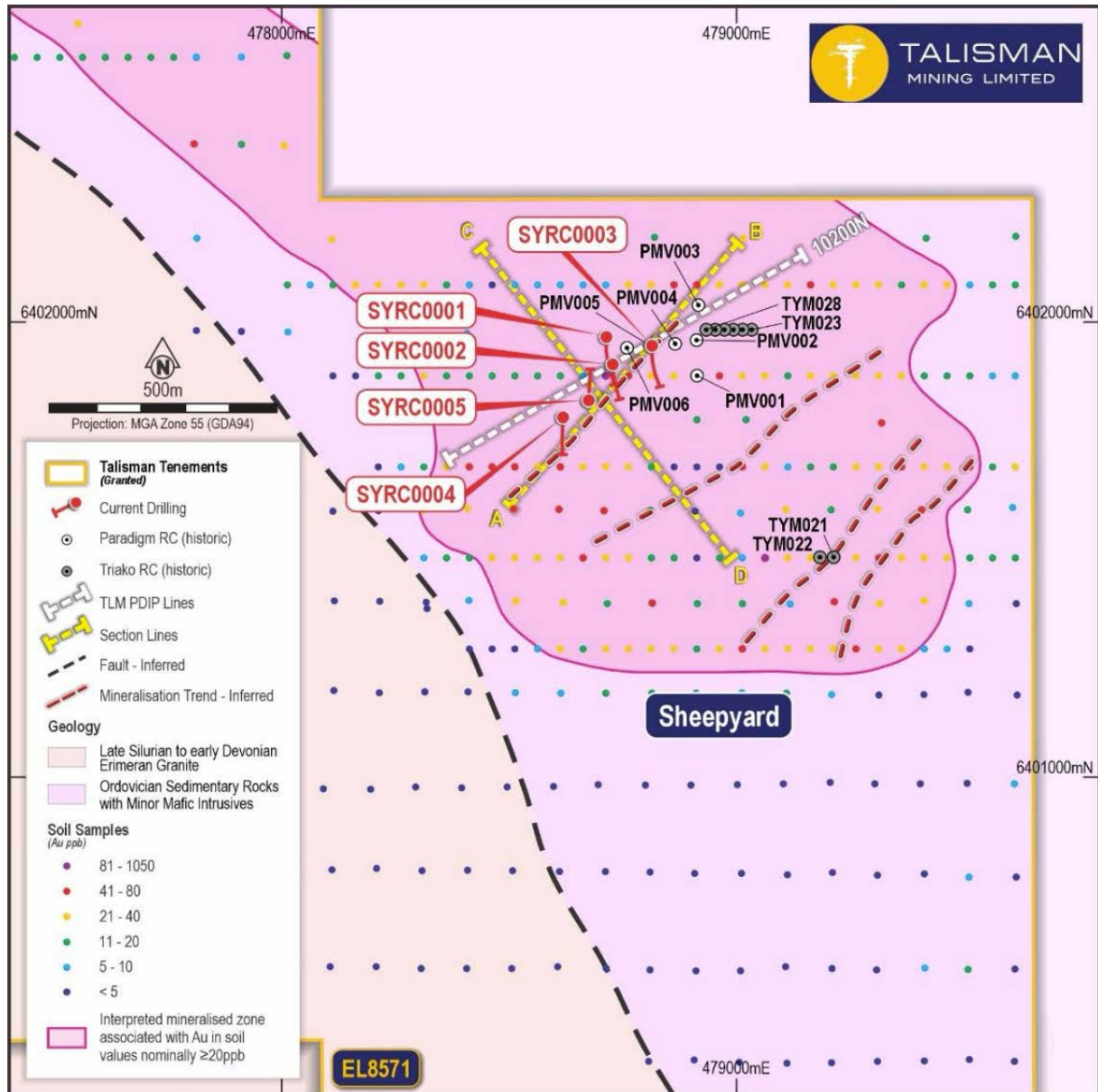


Figure 4: Sheepyard Prospect RC drilling plan view. Recent RC drilling locations over contoured gold-in-soil results indicating a NE-SW trend to the surface expression of mineralisation. RC drilling has tested only the north-western part of anomalous soil geochemistry. Three other zones also trending NE-SW have been identified and remain largely untested by drilling.



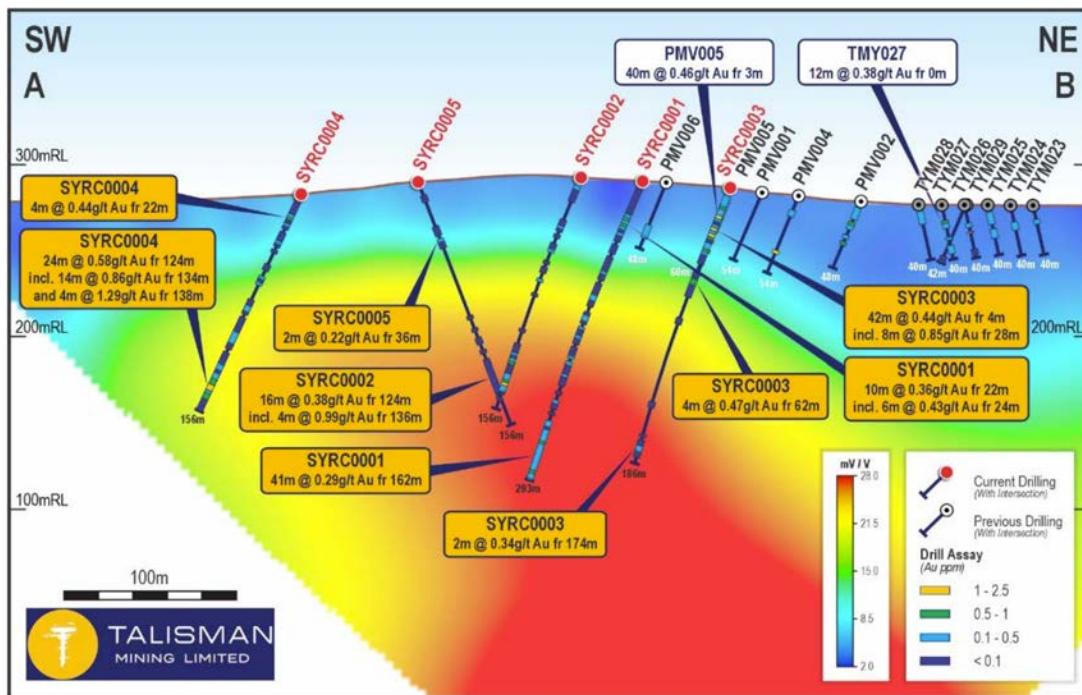


Figure 5: Sheeppyard Prospect RC drilling over PDIP chargeability section. See Figure 4 for section location. Deeper gold intersections in SYRC0001, SYRC0002 and SYRC0004 are coincident with the projected position of the PDIP chargeability anomaly.

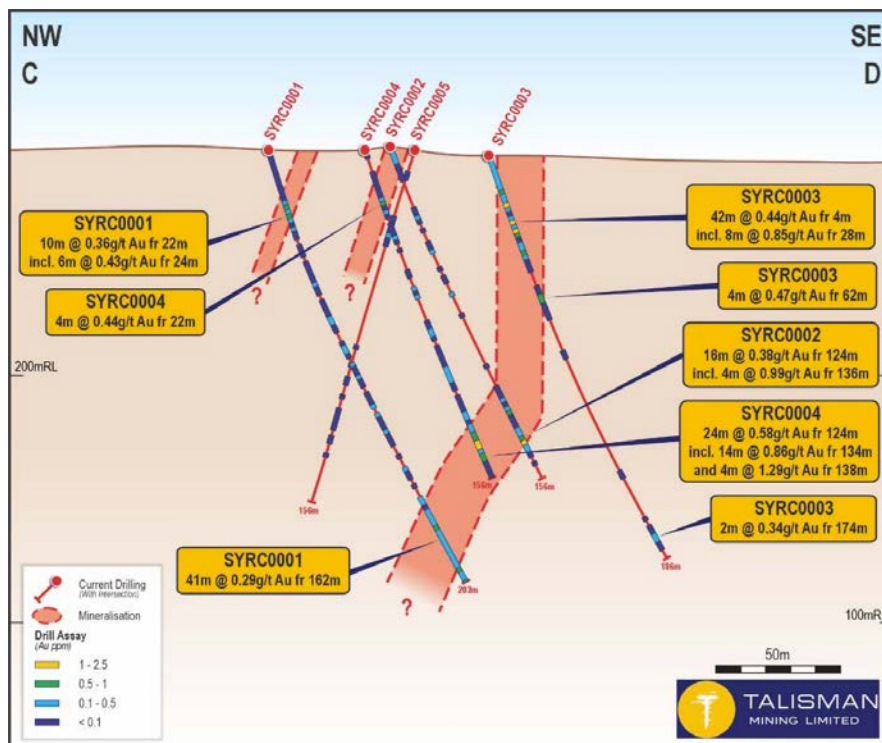


Figure 6: Sheeppyard Prospect RC drilling cross-section. See Figure 4 for section location. RC drilling is targeting both near-surface oxide mineralisation (intersected in SYRC0001 and SYRC0003) marked by the gold-in-soil anomaly and deeper hypogene mineralisation (intersected in SYRC0001, SYRC0002 and SYRC0004) associated with the extensive chargeability anomaly that sits below the anomalous gold-in-soil results.

For personal use only





## Macquarie Arc Projects, NSW

### Yarindury (EL 9679) – Geophysical survey<sup>2</sup>

Yarindury is located 30km north-east of Dubbo within the Molong Volcanic Belt, which forms part of the Macquarie Volcanic Arc in central-western NSW. The tenement lies along the same prospective corridor as Alkane Resources' (ASX: ALK) Boda-Kaiser Project, 20km to the south-east, and Newmont's (NYSE: NEM) worldclass Cadia copper-gold mine, located 100km along strike to the south.

Talisman completed a three-line, 13km, Induced Polarisation and Magneto-Telluric (IP-MT) ground geophysical survey at the project during the Quarter, with survey data revealing buried chargeability targets. A maiden drilling program to test the targets generated in this geophysical program is planned.

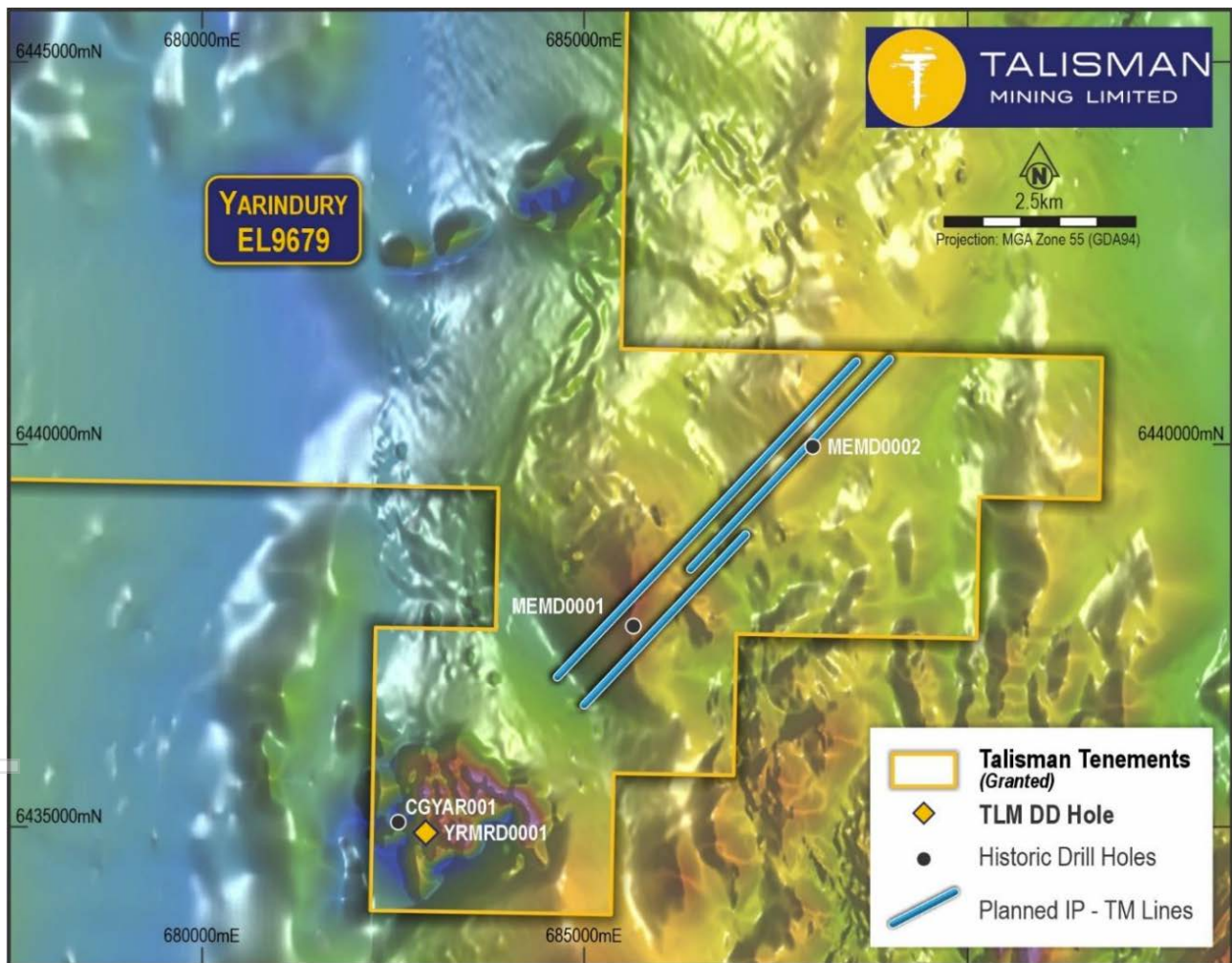


Figure 7: Yarindury Project area on magnetic image (RTP). Completed ground geophysical IP (Induced Polarisation) and MT (Magnetotelluric) survey line locations are illustrated.

<sup>2</sup> ASX: TLM -25 July 2025.





### East Peak Hill (EL 9395) – Auger Drilling<sup>3</sup>

EL 9395 is located in central western NSW zone on the Junee–Narromine Volcanic Belt (JNVB) of the Macquarie Volcanic Arc. The JNVB extends over 200km north–south and its northern portion hosts Alkane Resources' (ASX: ALK) Tomingley Gold Mine (shear hosted vein deposits) and the Peak Hill high-sulphidation-epithermal gold deposit.

The EL is situated immediately south-east of the Tomingley gold mine.

Talisman interprets East Peak Hill to be highly prospective for orogenic shear-hosted vein style gold mineralisation, high sulphidation vein style gold and porphyry style copper-gold mineralisation.

East Peak Hill Project contains interpreted andesitic volcanic units striking north–south along the length of the tenement.

An initial scout auger survey commenced in June 2025, targeting areas of shallow to moderate cover. In places the overlying cover exceeded the penetration depth of approximately 10m of the auger rig.

Aircore drilling in these areas as illustrated in Figure 9 is scheduled to complete the initial program.

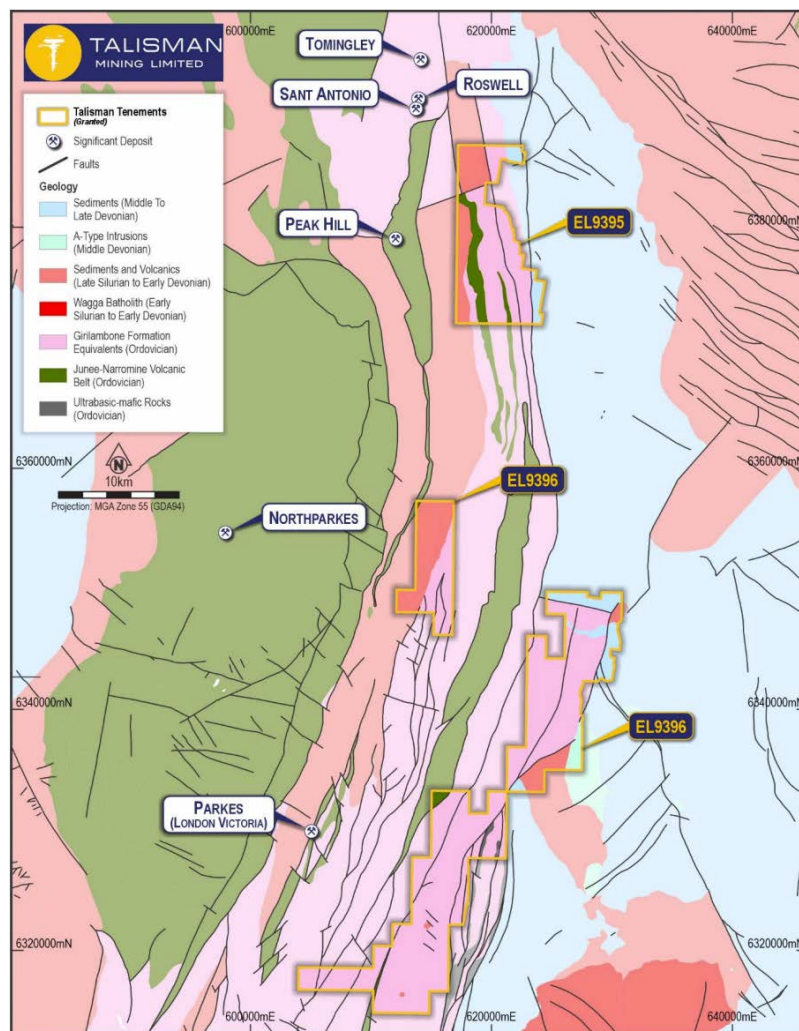


Figure 8: Talisman Exploration Licences across the Narromine-Junee Volcanic Belt. The northern block located adjacent to the Tomingley Gold Mine is the East Peak Hill (EL 9395) project area. Additional TLM tenure is also shown.

<sup>3</sup>ASX: TLM -17 June 2025.





For personal use only

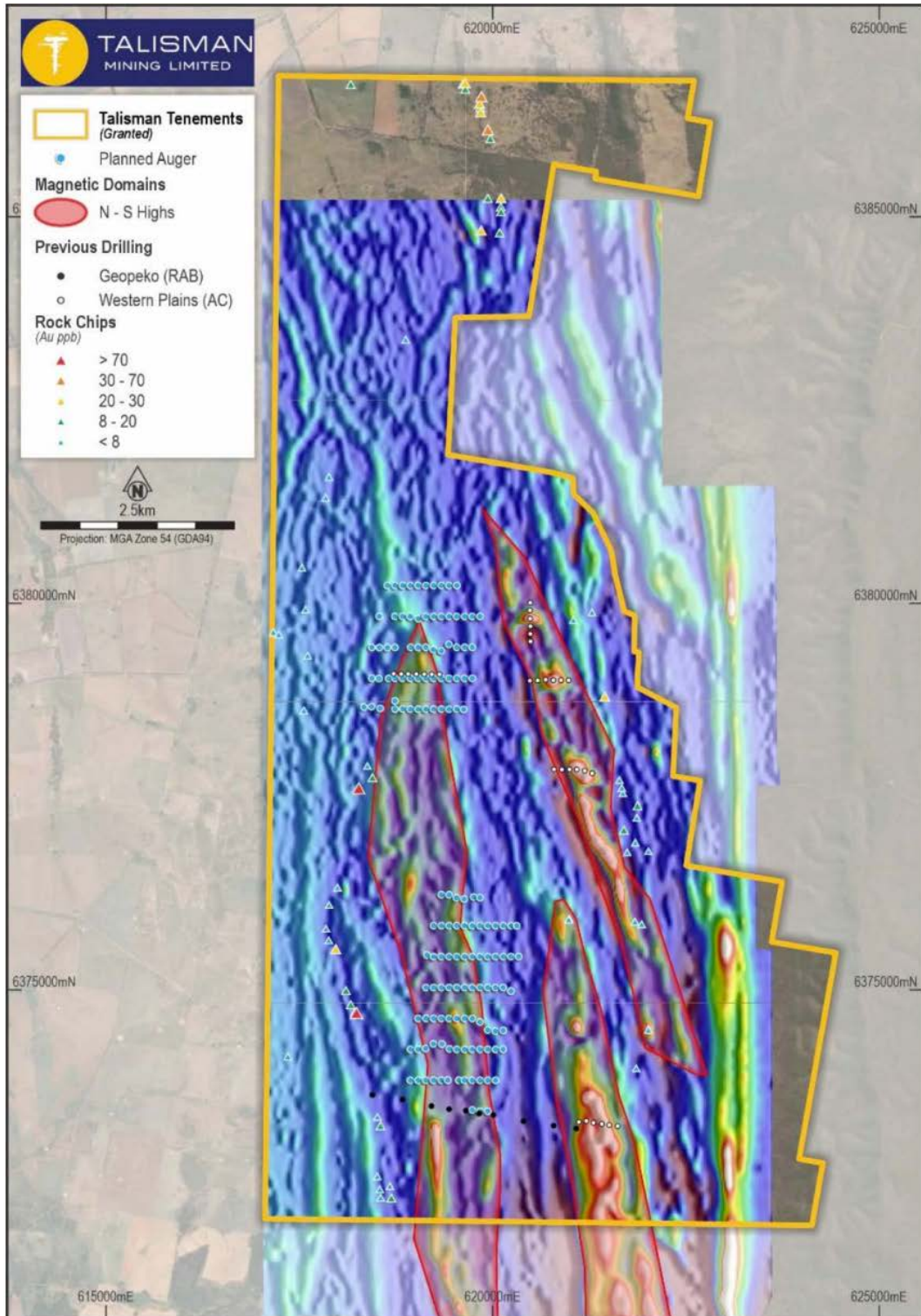


Figure 9: EL 9395 with location of initial auger program in broadly spaced lines targeted above interpreted N-S striking andesite units. Aircore drilling to follow up the auger and complete the initial program is planned to be carried out in the December quarter.





## Gawler Craton – South Australia

### Mabel Creek – June half drilling results<sup>4</sup>

Talisman acquired 100% ownership of the Mabel Creek IOCG Project in June 2023, securing a 1,048km<sup>2</sup> landholding approximately 30km west of Coober Pedy. The project is located over the post mineral covered parts of the Northern Gawler Craton, spanning the Nawa Domain and Mount Woods - Coober Pedy Ridge Complex. These geological domains are separated by a major east-west trending structural corridor known as the Karari Shear and Horse Camp Fault (Figure 9).

The Gawler Craton is highly prospective for large-scale Iron Oxide Copper Gold (IOCG) systems and hosts world-class deposits such as Olympic Dam, Carrapateena, and Prominent Hill, as well as recent discoveries including Oak Dam and Emmie Bluff.

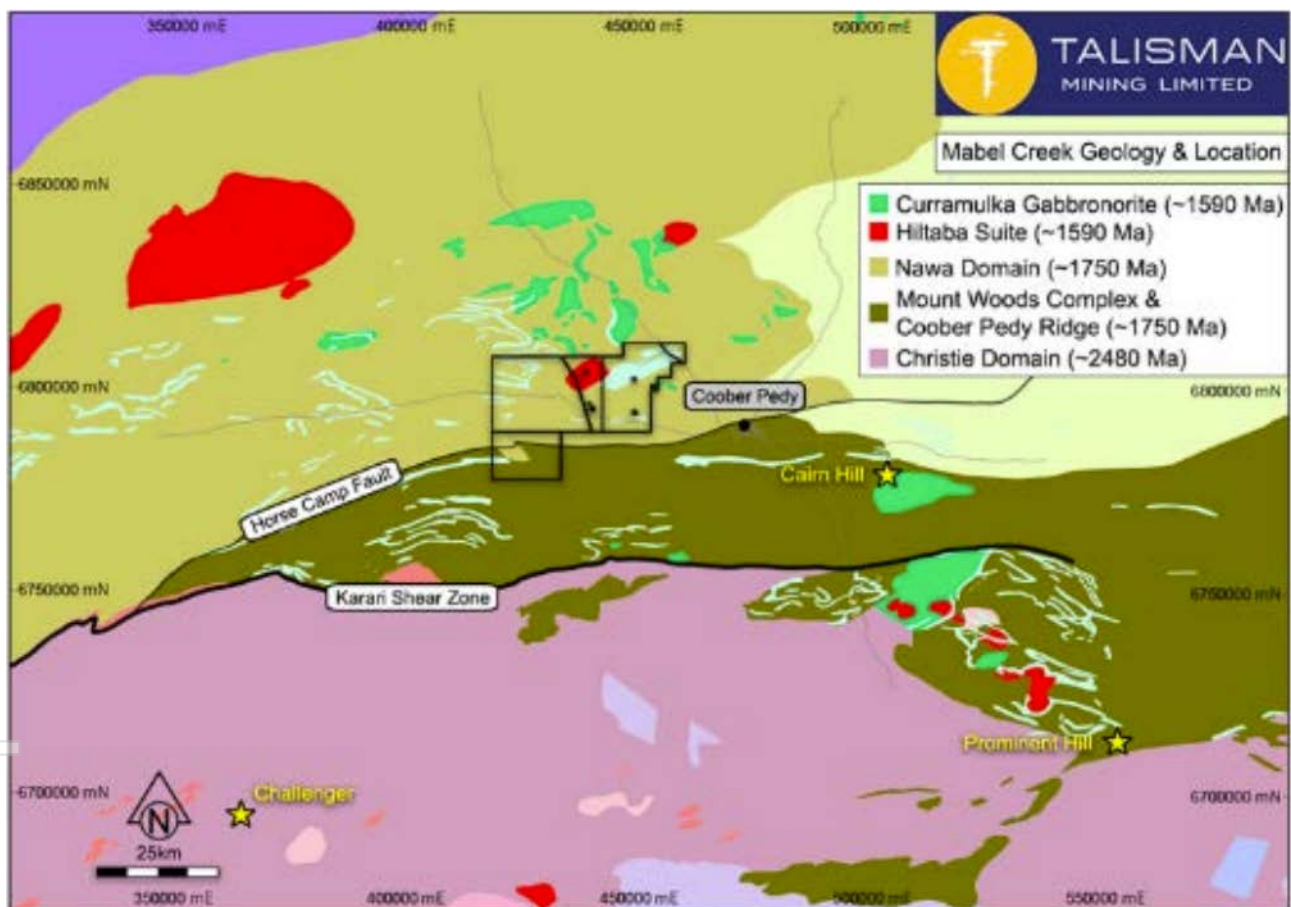


Figure 10: Simplified regional geology of the northern Gawler Craton showing Mabel Creek project area, major structural geological features and mineral deposits.

Following a detailed ground gravity survey completed in 2024<sup>4</sup>, Talisman conducted an initial diamond drilling program in March–April 2025<sup>5</sup>. Three holes (MCMRD001–MCMRD003), totalling 1,367m were completed which tested near-coincident magnetic and gravity anomalies under post mineral cover, in the Nawa Domain north of the Horse Camp Fault (Figure 10 and Figure 11).

Basement rocks were intersected at expected depths of between 205m to 305m. Diamond drilling intersected a suite of metamorphic lithologies including granite gneiss, pegmatitic granite,





amphibolite and calc-silicate rocks, with variable levels of hydrothermal alteration observed in most holes.

Result in hole MCMRD002, which tested anomaly P2 adjacent to the Horse Camp Fault were encouraging. This hole intersected a broad hydrothermal alteration zone with elevated molybdenum (Mo) and rare earth elements (REE)<sup>1</sup>. The significance of this zone as a potential vector toward IOCG mineralisation is being assessed further via detailed geochemical, petrological and geochronological studies.

The tenure remains prospective for IOCG-style mineralisation.

Following a review of the data, the area south of the Horse Camp Fault with likely shallow post mineral cover, has been identified as an exploration priority where several near-coincident magnetic and gravity anomalies are located within the Mt Woods -Cooper Pedy Ridge Complex. A second phase of exploration drilling is planned.

Ongoing geophysical modelling, incorporating insights from the initial drilling is underway to refine target drill hole locations.

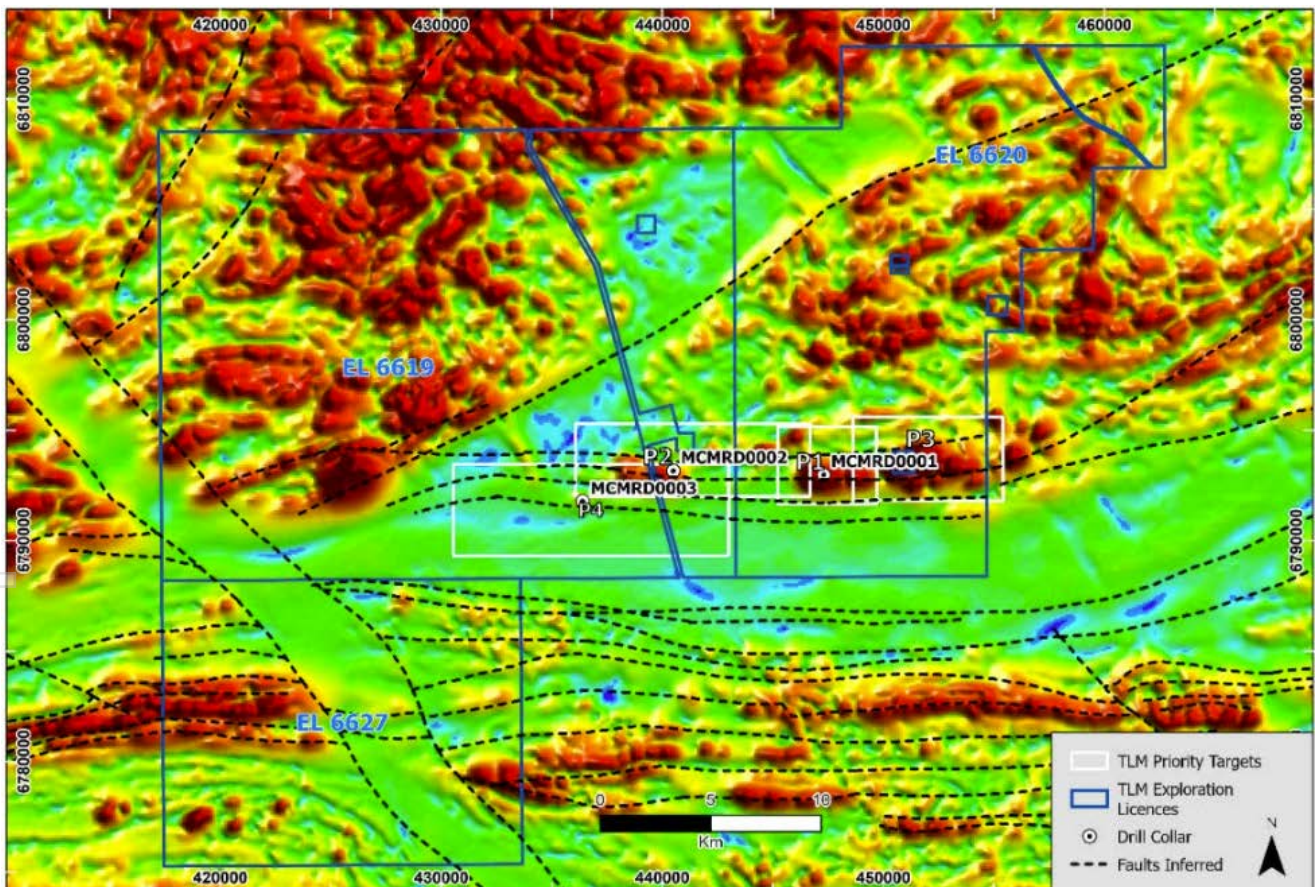


Figure 11: Mabel Creek tenure over processed magnetic (RTP) target images. Targets P1 to P4 sit adjacent to Nawa domain rocks north of the interpreted E-W oriented Horse Camp Fault zone.

<sup>4</sup> See ASX Announcement dated 17 June 2025 for full details of assay results



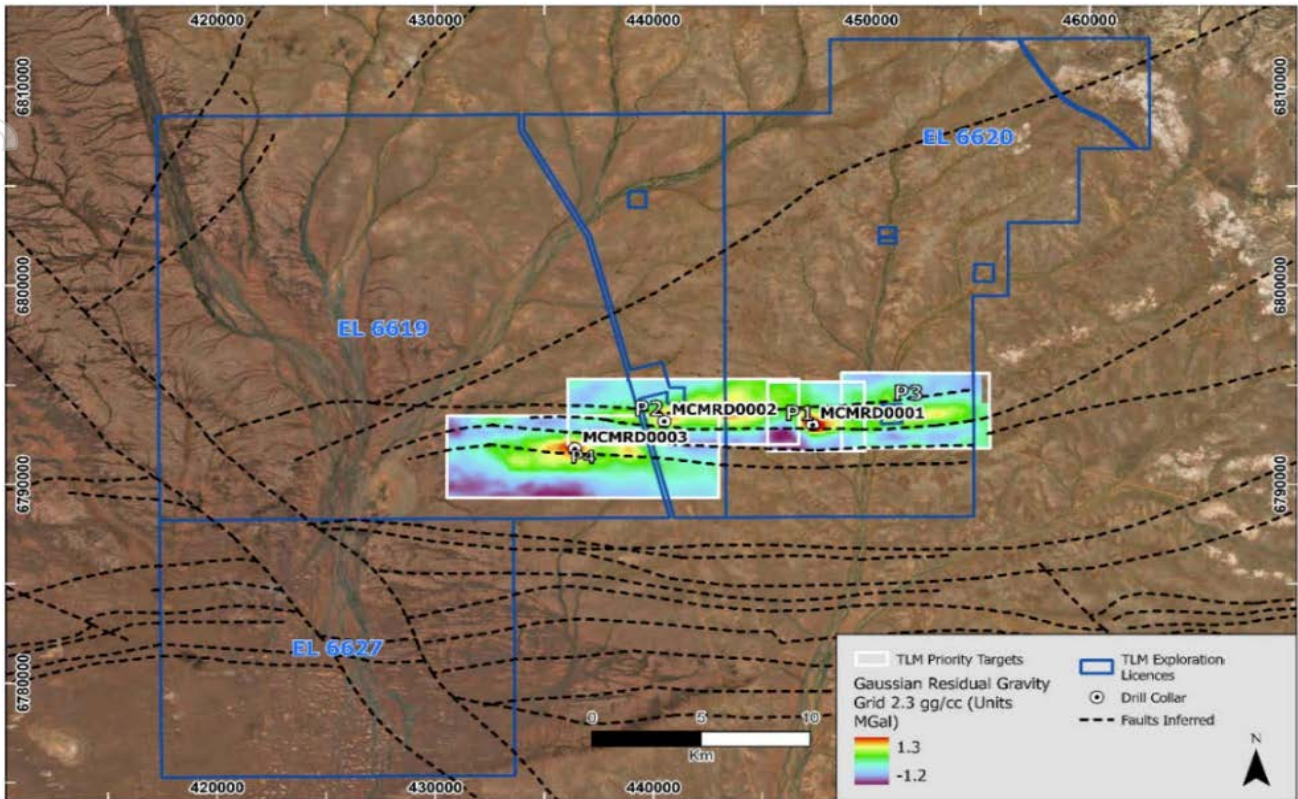


Figure 12: Mabel Creek tenure over processed gravity target images. Targets P1 to P4 sit adjacent to Nawa domain rocks north of the interpreted E-W oriented Horse Camp Fault zone.

## Corporate

### Iron Ore Royalty

During the quarter, Talisman received \$1.547 million in royalty payments from iron ore sales that occurred between 1 June 2025 and 31 August 2025 from Wonmunna Iron Ore Pty Ltd (Wonmunna, WIOM), a wholly owned subsidiary of Mineral Resources Limited (ASX: MIN), the owner and operator of the Pilbara Hub Iron Ore project in Western Australia.

The iron ore royalty receipts for the current quarter reflect the impact of moderating global iron ore pricing on WIOM sales made during the quarter, \$A: \$US exchange rate in line with recent history at 0.650 USD and near average shipping volumes from Wonmunna as part of the supply to the Pilbara Hub.

Since the commencement of iron ore production at the WIOM in March 2021, total royalty payments of \$32.8 million have been received by Talisman.

### New Project Opportunities

The Company continued to review potential mineral growth opportunities in Australia and elsewhere. Talisman continues to adopt a judicious approach to the review of all growth opportunities to ensure only value-accretive transactions that have the potential to create long-term shareholder value are pursued.

### Cash and Investments

At 30 September 2025, Talisman had \$4.073 million cash available for its operating and investing activities. Investments in Novo Resources shares (ASX:NVO) were valued at \$0.287M





## Expenditure on mining exploration activities

In accordance with ASX Listing Rule 5.3.1, the Company advises its exploration and evaluation expenditure during the September 2025 quarter totalled \$1.353 million. This amount is included at Item 1.2(a) of the Appendix 5B and relates to activities undertaken on the Company's Lachlan Copper-Gold Project and Macquarie Arc Copper-Gold Project.

Expenditure during the quarter included payment for and assessment of prior period RC drilling, auger drilling, assaying, geophysical surveying, geological mapping activities, tenement management, and exploration activity planning.

## Payments to related parties of the entity and their associates

In accordance with Section 6.1 of the September 2025 Quarter Appendix 5B, Talisman provides the following in relation to payments made during the quarter to related parties:

Description	\$A'000	Explanation
Directors Fees	161	Short term and post-employment benefits paid to non-executive directors.

## — Ends —

For further information, please contact:

**Andrew Munckton - Managing Director**

+61 4 3563 5598

**Nicholas Read (Media inquiries)**

+61 4199 29046

*This release has been authorised by the Board of Talisman Mining Limited.*

## About Talisman Mining

Talisman Mining Limited (ASX:TLM) is an Australian mineral development and exploration company. The Company's aim is to maximise shareholder value through exploration, discovery and development of complementary opportunities in base and precious metals.

Talisman has secured tenements in the Cobar/Mineral Hill region in Central NSW through the grant of its own Exploration Licenses and through joint venture agreements. The Cobar/Mineral Hill region is a richly mineralised district that hosts several base and precious metal mines including the CSA, Tritton, and Hera/Nymagee mines. This region contains highly prospective geology that has produced many long-life, high-grade mineral discoveries. Talisman has identified several areas within its Lachlan Cu-Au Project tenements that show evidence of base and precious metals endowment which have had very little modern systematic exploration completed to date. Talisman believes there is significant potential for the discovery of substantial base metals and gold mineralisation within this land package and is undertaking active exploration to test a number of these targets.

Talisman also has secured access to over 1000km<sup>2</sup> of highly prospective tenure in South Australia's Gawler Craton known as the Mabel Creek Project. Mabel Creek is prospective for large scale Iron Oxide Copper Gold (IOCG) deposits and intrusion related rare earths and battery metals mineralisation. Mable Creek is surrounded by similar tenure owned and being actively explored by Australia's biggest resource companies including BHP, Rio Tinto and FMG.





## Competent Person's Statement

Information in this announcement that relates to Exploration Results and Exploration Targets is based on and fairly represents information and supporting documentation compiled by Mr Andrew Munckton, who is a member of the Australasian Institute of Mining and Metallurgy. Mr Munckton is a full-time employee of Talisman Mining Ltd and has sufficient experience which is relevant to the style of mineralisation and types of deposits under consideration and to the activities undertaken to qualify as a Competent Person as defined in the 2012 Edition of the "Australasian Code for Reporting of Exploration Results, Mineral Resources and Ore Reserves". Mr Munckton has reviewed the contents of this announcement and consents to the inclusion in this announcement of all technical statements based on his information in the form and context in which they appear.

## Forward-Looking Statements

This ASX release may include forward-looking statements. These forward-looking statements are not historical facts but rather are based on Talisman Mining Ltd.'s current expectations, estimates and assumptions about the industry in which Talisman Mining Ltd operates, and beliefs and assumptions regarding Talisman Mining Ltd.'s future performance. Words such as "anticipates", "expects", "intends", "plans", "believes", "seeks", "estimates", "potential" and similar expressions are intended to identify forward-looking statements. Forward-looking statements are only predictions and are not guaranteed, and they are subject to known and unknown risks, uncertainties, and assumptions, some of which are outside the control of Talisman Mining Ltd. Past performance is not necessarily a guide to future performance and no representation or warranty is made as to the likelihood of achievement or reasonableness of any forward-looking statements or other forecast. Actual values, results or events may be materially different to those expressed or implied in this presentation. Given these uncertainties, recipients are cautioned not to place reliance on forward looking statements. Any forward-looking statements in this announcement speak only at the date of issue of this announcement. Subject to any continuing obligations under applicable law and the ASX Listing Rules, Talisman Mining Ltd does not undertake any obligation to update or revise any information or any of the forward-looking statements in this announcement or any changes in events, conditions, or circumstances on which any such forward looking statement is based.

For personal use only





## Appendix 1

### Talisman Tenement Holdings

<b>LACHLAN PROJECT</b>	New South Wales					
<b>EL8615</b>	(356km <sup>2</sup> )	100%	100%	-	-	N/A
<b>EL8659</b>	(373km <sup>2</sup> )	100%	100%	-	-	
<b>EL8677</b>	(193km <sup>2</sup> )	100%	100%	-	-	
<b>EL8414</b>	(174km <sup>2</sup> )	100%	100%	-	-	1.5% NSR to Peel Mining
<b>EL8547</b>	(205km <sup>2</sup> )	100%	100%	-	-	N/A
<b>EL8571</b>	(258km <sup>2</sup> )	100%	100%	-	-	
<b>EL8658</b>	(256km <sup>2</sup> )	100%	100%	-	-	
<b>EL8680</b>	(20km <sup>2</sup> )	100%	100%	-	-	
<b>EL8719</b>	(191km <sup>2</sup> )	100%	100%	-	-	
<b>EL9298</b>	(440km <sup>2</sup> )	100%	100%	-	-	
<b>EL9299</b>	(199km <sup>2</sup> )	100%	100%	-	-	
<b>EL9302</b>	(108km <sup>2</sup> )	100%	100%	-	-	
<b>EL9306</b>	(103km <sup>2</sup> )	100%	100%	-	-	
<b>EL9315</b>	(108km <sup>2</sup> )	100%	100%	-	-	
<b>EL9379</b>	(878km <sup>2</sup> )	100%	100%	-	-	
<b>EL9462</b>	(6km <sup>2</sup> )	100%	100%	-	-	
<b>ELVIS PROJECT</b>	New South Wales					
<b>EL8977</b>	(463km <sup>2</sup> )	100%	100%	-	-	N/A
<b>EL9395</b>	(75km <sup>2</sup> )	100%	100%	-	-	
<b>EL9396</b>	(229km <sup>2</sup> )	100%	100%	-	-	
<b>HILLSTON PROJECT</b>	New South Wales					
<b>EL8907</b>	(372km <sup>2</sup> )	100%	100%	-	-	
<b>EL9394</b>	(399km <sup>2</sup> )	100%	100%	-	-	N/A
<b>LUCKNOW PROJECT</b>	New South Wales					
<b>EL6455</b>	(29km <sup>2</sup> )	51%	51%			





<b>MACQUARIE PROJECT</b>		New South Wales		-	
<b>EL9630</b>	(356km <sup>2</sup> )	100%	100%		
<b>EL9678</b>	(343km <sup>2</sup> )	100%	100%	-	-
<b>EL9679</b>	(180km <sup>2</sup> )	100%	100%	-	-
<b>EL 9701</b>	(227km <sup>2</sup> )	100%	100%	-	-
<b>EL 9702</b>	(317km <sup>2</sup> )	100%	100%	-	-
<b>MABEL CREEK PROJECT</b>		South Australia		-	
<b>EL6619</b>	(519km <sup>2</sup> )	100%	100%		
<b>EL6620</b>	(319km <sup>2</sup> )	100%	100%	-	-
<b>EL6627</b>	(210km <sup>2</sup> )	100%	100%		-

For personal use





## Appendix 2

JORC Tables Section 1 & 2

### Section 1 Sampling Techniques and Data

(Criteria in this section apply to all succeeding sections)

Criteria	JORC Code explanation	Commentary
Sampling techniques	<ul style="list-style-type: none"> <li><i>Nature and quality of sampling (e.g. cut channels, random chips, or specific specialised industry standard measurement tools appropriate to the minerals under investigation, such as down-hole gamma sondes, or handheld XRF instruments, etc.). These examples should not be taken as limiting the broad meaning of sampling.</i> <ul style="list-style-type: none"> <li><i>Include reference to measures taken to ensure sample representivity and the appropriate calibration of any measurement tools or systems used.</i></li> <li><i>Aspects of the determination of mineralisation that are Material to the Public Report. In cases where 'industry standard' work has been done this would be relatively simple (e.g. 'reverse circulation drilling was used to obtain 1 m samples from which 3kg was pulverised to produce a 30 g charge for fire assay'). In other cases, more explanation may be required, such as where there is coarse gold that has inherent sampling problems. Unusual commodities or mineralisation types (e.g. submarine nodules) may warrant disclosure of detailed information.</i></li> </ul> </li> </ul>	<ul style="list-style-type: none"> <li>RC Drilling samples are collected at either one metre or two metre intervals via a drill rig mounted cyclone and static cone splitter set to a 12% split to produce a nominal 4-7kg sample which are collected in a pre-numbered sample bag.</li> <li>RC samples undergo routine 2 metre composite pXRF analysis using an Olympus Vanta M-series to aid in logging and identifying zones of interest.</li> <li>Diamond drill core samples, either PQ, HQ3 or NQ2 in size diameter, are either cut in half longitudinally or a quarter longitudinally, using an automated Almonte core saw with core placed in boats, holding the core in place. Core sample intervals varied from 0.2 to 1.3m in length but were predominantly aligned to 1m intervals or with sample boundaries which respected geological contacts.</li> <li>Sampling is controlled by Talisman protocols and QAQC procedures as per industry standard and a chain of custody maintained through transfer to ALS Laboratories in Adelaide, SA.</li> <li>RC/DD samples are dried, crushed (where required), split and pulverised (total prep) to produce a master pulp. From this master pulp, a 0.25g sub sample was taken for multi-element analysis by four acid digest with an ICP-MS finish. A 50g sub sample was also taken for fire assay for gold with ICP-AES finish.</li> <li>Mud Rotary (MR) chips will be sampled from sieved 6m composites and will be analysed using a portable XRF.</li> </ul>
Drilling techniques	<ul style="list-style-type: none"> <li><i>Drill type (e.g. core, reverse circulation, open-hole hammer, rotary air blast, auger, Bangka, sonic, etc) and details (e.g. core diameter, triple or standard tube, depth of diamond tails, face-sampling bit or other type, whether core is oriented and if so, by what method, etc).</i></li> </ul>	<ul style="list-style-type: none"> <li>RC drilling cited in this report was undertaken by Strike Drilling Pty Ltd using a LC36 (KWL 700) truck-mounted Reverse Circulation drill rig. A truck-mounted booster and compressor provided high pressure air with an auxiliary compressor used where ground conditions warranted.</li> <li>RC drilling was completed with a face sampling hammer of nominal 140mm size</li> <li>Diamond Drilling cited in this report at the</li> </ul>





Criteria	JORC Code explanation	Commentary
		<p>Durnings Project was undertaken by DDH1 Drilling Pty LTD using an Evolution FH3000 or a Multipurpose UDR1200 truck mounted rig. RC components in DRRCD0027 and DRRCD0028 was undertaken by the Multipurpose UDR 1200.</p> <ul style="list-style-type: none"> <li>• Diamond drilling undertaken by DDH1 Drilling Pty Ltd Multipurpose UDR1000 truck mounted rig at Mabel Ck and Yarindury. Mud Rotary drilling was completed through the thick (~200-300m) Mesozoic and/or Palaeozoic cover sequences. Diamond drill tails were undertaken in the basement sequence when intersected.</li> <li>• Down hole surveys were undertaken approximately every 30m using an Axis north seeking gyro.</li> </ul>
Drill sample recovery	<ul style="list-style-type: none"> <li>• <i>Method of recording and assessing core and chip sample recoveries and results assessed.</i></li> <li>• <i>Measures taken to maximise sample recovery and ensure representative nature of the samples.</i></li> <li>• <i>Whether a relationship exists between sample recovery and grade and whether sample bias may have occurred due to preferential loss/gain of fine/coarse material.</i></li> </ul>	<p>RC Drilling</p> <ul style="list-style-type: none"> <li>• RC drill sample recovery is generally high with sample recoveries and quality recorded in the database by the logging geologist</li> <li>• Sample recoveries were monitored in real-time by the presence of Talisman personnel at the drill site.</li> </ul> <p>Diamond Drilling</p> <ul style="list-style-type: none"> <li>• Core recovery data recorded for each run by measuring total length of core retrieved against the downhole interval drilled and stored in the database. TLM representatives continuously monitor core recovery and core presentation quality as drilling is conducted and issues or discrepancies are rectified promptly to maintain industry best standards.</li> </ul>
Logging	<ul style="list-style-type: none"> <li>• <i>Whether core and chip samples have been geologically and geotechnically logged to a level of detail to support appropriate Mineral Resource estimation, mining studies and metallurgical studies.</i></li> <li>• <i>Whether logging is qualitative or quantitative in nature. Core (or costean, channel, etc.) photography.</i></li> <li>• <i>The total length and percentage of the relevant intersections logged.</i></li> </ul>	<p>RC Drilling</p> <ul style="list-style-type: none"> <li>• RC logging records lithology, mineralogy, mineralisation, alteration, structure, weathering, colour and other primary features of the rock samples and is considered to be representative across the intercepted geological units.</li> <li>• RC logging is both qualitative and quantitative depending on the field being logged.</li> <li>• All RC drill-holes are logged in full to end of hole.</li> <li>• All RC chip trays are photographed and then stored onsite at the Talisman Condobolin yard.</li> <li>• All information collected is entered directly into laptop computers or tablets, validated in the field, and then transferred to the database. The level of logging detail is considered appropriate for</li> </ul>



Criteria	JORC Code explanation	Commentary
		<p>exploration and to support appropriate mineral resource estimation, mining studies, and metallurgical studies.</p> <p>Diamond Drilling (DD) and Mud Rotary drilling (MR)</p> <ul style="list-style-type: none"> <li>• Logging was carried out on site once geology personnel retrieve core or chip trays from the drill rig site.</li> <li>• Logging records lithology, mineralogy, mineralisation, alteration, structure, weathering, colour and other primary features of the rock samples and is considered to be representative across the intercepted geological units.</li> <li>• All drill-holes are logged in full to end of hole.</li> <li>• Collar coordinates, azimuth, dip, depth and sampling intervals are also recorded.</li> <li>• Logging is both qualitative and quantitative depending on the field being logged. Logging of diamond drill core includes geotechnical data, RQD and core recoveries.</li> <li>• Diamond drill core is photographed prior to any cutting and/or sampling and then stored onsite in Talisman Condobolin Yard.</li> <li>• Mud Rotary chips will be photographed in trays.</li> <li>• All information collected is entered directly into laptop computers or tablets, validated in the field, and then transferred to the database. The level of logging detail is considered appropriate for exploration and to support appropriate mineral resource estimation, mining studies, and metallurgical studies.</li> </ul>
<p>Sub-sampling techniques and sample preparation</p>	<ul style="list-style-type: none"> <li>• <i>If core, whether cut or sawn and whether quarter, half or full core taken.</i></li> <li>• <i>If non-core, whether riffled, tube sampled, rotary split, etc. and whether sampled wet or dry.</i></li> <li>• <i>For all sample types, the nature, quality and appropriateness of the sample preparation technique.</i></li> <li>• <i>Quality control procedures adopted for all sub-sampling stages to maximise representivity of samples.</i></li> <li>• <i>Measures taken to ensure that the sampling is representative of the in-</i></li> </ul>	<p>RC Drilling</p> <ul style="list-style-type: none"> <li>• RC samples were dried, crushed (where required), split and pulverised (total prep) to produce a 0.25g sub sample for base metal analysis or a 30g sub sample for gold analysis by fire assay.</li> <li>• QAQC protocols for all RC sampling involved the use of Certified Reference Material (CRM) as assay standards.</li> <li>• All QAQC controls and measures were routinely reviewed. Sample size is considered appropriate for geochemical sampling for base-metal and gold mineralisation given the nature of drilling and anticipated distribution of mineralisation. Field</li> </ul>





Criteria	JORC Code explanation	Commentary
	<p><i>situ material collected, including for instance results for field duplicate/second-half sampling.</i></p> <ul style="list-style-type: none"> <li>• <i>Whether sample sizes are appropriate to the grain size of the material being sampled.</i></li> </ul>	<p>duplicates were collected at a 1 in 30 sample rate</p> <p>Diamond Drilling</p> <ul style="list-style-type: none"> <li>• Diamond drill core (NQ3, HQ or PQ) samples collected for analysis are longitudinally cut in half, and quarters for the QAQC samples using a using an automated Almonte core saw. Core was placed in boats, holding core in place.</li> <li>• Diamond half core or quarter core sample intervals typically vary from 0.2m to 1.3m in length. 1m sample intervals were favoured and are the most common method of sampling, however sample boundaries do principally coincide with geological contacts. The remaining core was retained in core trays.</li> <li>• Samples are dispatched to a sample preparation lab in Adelaide ALS where they are dried, crushed (where required), split and pulverised (total prep) to produce a 0.25g sub sample for base metal analysis or a 50g sub sample for gold analysis by fire assay.</li> <li>• QAQC protocols for all diamond drill core sampling involved the use of Certified Reference Material (CRM) as assay standards.</li> <li>• All QAQC controls and measures were routinely reviewed.</li> <li>• Sample size is considered appropriate for geochemical sampling for base-metal and gold mineralisation given the nature of drilling and anticipated distribution of mineralisation.</li> <li>• Mud Rotary (MR) drill chips will be sampled from 6m composites and will be analysed using a portable XRF.</li> </ul>
<p>Quality of assay data and laboratory tests</p>	<ul style="list-style-type: none"> <li>• <i>The nature, quality and appropriateness of the assaying and laboratory procedures used and whether the technique is considered partial or total.</i></li> <li>• <i>For geophysical tools, spectrometers, handheld XRF instruments, etc, the parameters used in determining the analysis including instrument make and model, reading times, calibrations factors applied and their derivation, etc.</i></li> <li>• <i>Nature of quality control procedures</i></li> </ul>	<p>RC Drilling</p> <ul style="list-style-type: none"> <li>• QAQC protocols for all RC sampling involved the use of certified reference materials as assay standards, inserted at a 1 in 50 sampling rate.</li> <li>• Blank samples were inserted at a 1 in 50 sampling rate using a Certified Reference Material (CRM) coarse blank.</li> <li>• All assays are required to conform to the procedural QAQC guidelines as well as routine laboratory QAQC guidelines.</li> <li>• All QAQC controls and measures were routinely reviewed. • Laboratory checks (repeats) occurred</li> </ul>

For personal use only





For personal use only

Criteria	JORC Code explanation	Commentary
	<p><i>adopted (e.g. standards, blanks, duplicates, external laboratory checks) and whether acceptable levels of accuracy (i.e. lack of bias) and precision have been established.</i></p>	<p>at a frequency of 1 in 25. Field duplicates returned a reasonable level of precision with some minor variation in Au attributed to nugget effect of gold mineralisation.</p> <ul style="list-style-type: none"> <li>Each 1m or 2m composite RC sample undergoes routine pXRF analysis using a Olympus Vanta M-series to aid in logging and identifying zones of interest. All pXRF readings were taken in Geo-Exploration mode with a 45 second 3 beam reading.</li> <li>Standard reference materials were used to calibrate the pXRF instrument every 30 samples</li> </ul> <p>Diamond Drilling</p> <ul style="list-style-type: none"> <li>A multi (48) analysis by 4-acid digest with ICP-MS determination (ME-MS61). Over-limit Pb, Zn, Cu, Ag samples are re-assayed by 4 acid digest with ICP finish (OG 62 and OG 62h).</li> <li>Au analysis by fire assay/AAS Finish (AA24). Over-limit Au by fire-assay and gravimetric finish (GRA-21).</li> <li>A representative selection of samples will be analysed using Terra Spec and REE analysis (ME-MS61L-REE).</li> <li>QAQC protocols for all DD sampling involved the use of certified reference materials as assay standards, inserted at a 1 in 25 sampling rate.</li> <li>Field duplicates and blanks are introduced in areas of identified mineralisation.</li> <li>All assays are required to conform to the procedural QAQC guidelines as well as routine laboratory QAQC guidelines.</li> <li>All QAQC controls and measures were routinely reviewed.</li> <li>Laboratory checks (repeats) occurred at a frequency of 1 in 25.</li> </ul>
<p>Verification of sampling and assaying</p>	<ul style="list-style-type: none"> <li><i>The verification of significant intersections by either independent or alternative company personnel.</i></li> <li><i>The use of twinned holes.</i></li> <li><i>Documentation of primary data, data entry procedures, data verification, data storage (physical and electronic) protocols.</i></li> </ul>	<ul style="list-style-type: none"> <li>Significant intercepts are verified by alternate company personnel.</li> <li>Logging and sampling data is captured and imported using Industry standard software.</li> <li>Assay data is uploaded to a secure database directly from the CSV file provided by the laboratory.</li> <li>Primary laboratory assay data is always kept and</li> </ul>





Criteria	JORC Code explanation	Commentary
	<ul style="list-style-type: none"> <li>Discuss any adjustment to assay data.</li> </ul>	is not replaced by any adjusted or interpreted data.
Location of data points	<ul style="list-style-type: none"> <li>Accuracy and quality of surveys used to locate drill-holes (collar and down-hole surveys), trenches, mine workings and other locations used in Mineral Resource estimation.</li> <li>Specification of the grid system used.</li> <li>Quality and adequacy of topographic control.</li> </ul>	<ul style="list-style-type: none"> <li>Talisman drill collar locations are pegged using a hand-held GPS. Final collar locations were also picked up using a hand-held GPS with +/- 3m accuracy. The coordinate system used is the Geocentric Datum of Australia (GDA) 1994. All coordinates are at Mabel Creek are in the Map Grid of Australia zone 53 (MGA), Universal Transverse Mercator. All coordinates are at Durnings and Yarindury are in the Map Grid of Australia zone 55 (MGA), Universal Transverse Mercator.</li> </ul>
Data spacing and distribution	<ul style="list-style-type: none"> <li>Data spacing for reporting of Exploration Results.</li> <li>Whether the data spacing and distribution is sufficient to establish the degree of geological and grade continuity appropriate for the Mineral Resource and Ore Reserve estimation procedure(s) and classifications applied.</li> <li>Whether sample compositing has been applied.</li> </ul>	<ul style="list-style-type: none"> <li>Drill spacing at all projects varies depending on requirements.</li> <li>No Mineral Resource is being reported for any Talisman Projects.</li> <li>No sample compositing has been applied.</li> </ul>
Orientation of data in relation to geological structure	<ul style="list-style-type: none"> <li>Whether the orientation of sampling achieves unbiased sampling of possible structures and the extent to which this is known, considering the deposit type.</li> <li>If the relationship between the drilling orientation and the orientation of key mineralised structures is considered to have introduced a sampling bias, this should be assessed and reported if material.</li> </ul>	<ul style="list-style-type: none"> <li>Talisman drill holes are designed to traverse approximately normal to dominant mineralised trends interpreted for each target. The orientation of key structures may be locally variable and any relationship to mineralisation has yet to be identified.</li> <li>At this early stage of exploration, drilling and geological knowledge of the project, accurate true widths are yet to be determined.</li> </ul>
Sample security	<ul style="list-style-type: none"> <li>The measures taken to ensure sample security.</li> </ul>	<ul style="list-style-type: none"> <li>Drill samples transported from drill site by Company Personnel in secure company vehicle and/or accredited couriers to Talisman Condobolin yard prior to submission. Samples were transported to ALS Chemex Laboratories Adelaide by an accredited courier service.</li> </ul>
Audits or reviews	<ul style="list-style-type: none"> <li>The results of any audits or reviews of sampling techniques and data.</li> </ul>	<ul style="list-style-type: none"> <li>No external audits or reviews of the sampling techniques and data have been completed.</li> </ul>



## Section 2 Reporting of Exploration Results

(Criteria listed in the preceding section also apply to this section)

Criteria	JORC Code explanation	Commentary
Mineral tenement and land tenure status	<ul style="list-style-type: none"> <li>Type, reference name/number, location and ownership including agreements or material issues with third parties such as joint ventures, partnerships, overriding royalties, native title interests, historical sites, wilderness or national park and environmental settings.</li> <li>The security of the tenure held at the time of reporting along with any known impediments to obtaining a licence to operate in the area.</li> </ul>	<ul style="list-style-type: none"> <li>The Central Lachlan Copper Gold Project currently comprises 15 granted exploration licences: <ul style="list-style-type: none"> <li>EL8414, EL8547, EL8571, EL8615, EL8677, EL8658, EL8659, EL8680, EL8719, EL9298, EL9299, EL9302, EL9306, EL9315 and EL9379 held 100% by Haverford.</li> <li>Native Title Claim NC2012/001 has been lodged over the area of the following tenements by NTSCORP Ltd on behalf of the Ngemba, Ngiyampaa, Wangaaypuwan and Wayilwan traditional owners: EL8414, EL8571, EL8615, EL8677, EL8658, EL8659, EL9298, EL9299, EL9302, EL9306, EL9315 and EL9379.</li> </ul> </li> <li>Yarindury Project currently comprises EL9679 which is held 100% by Haverford Holdings a 100% owned subsidiary of Talisman Mining.</li> <li>The Mabel Creek Project currently comprises three granted exploration licences: <ul style="list-style-type: none"> <li>EL6627 was granted on the 13/08/2021 for an initial 6 year period and is held 100% by Haverford Pty Ltd. EL6619 and EL 6620 were granted on the 19/07/2021 for an initial 6 year period and are held 100% by Haverford Pty Ltd.</li> <li>Native Title and Land Access Agreement fully executed between Talisman Mining Limited and the Antakirinja Matu-Yankunytjatjara Aboriginal (AMYAC) Corporation in September 2023.</li> <li>Project Heritage Access Clearance survey (ACS) completed by (AMYAC) for all planned drill pads and access tracks. All tenements are in good standing and there are no existing known impediments to exploration or mining.</li> </ul> </li> </ul> <p>All tenements are in good standing and there are no existing known impediments to exploration or mining</p>
Exploration done by other parties	<ul style="list-style-type: none"> <li>Acknowledgment and appraisal of exploration by other parties.</li> </ul>	<ul style="list-style-type: none"> <li>The Walkers Hill Project has been subject to exploration by numerous previous explorers. Exploration work has included RC and Air Core drilling, ground and airborne geophysical surveys, soil sampling, geological interpretation, and other ground based surface exploration.</li> <li>The Yarindury Project has been subject to exploration</li> </ul>





Criteria	JORC Code explanation	Commentary
		<p>by several previous explorers. Exploration work has included diamond, RC drilling, geological mapping, geological interpretation and geophysics (airborne magnetics, ground gravity).</p> <ul style="list-style-type: none"> <li>The Mabel Creek Project has been subject to exploration by numerous previous explorers. Exploration work has included geophysics (gravity and magnetics) diamond drilling and geological interpretation.</li> </ul>
Geology	<ul style="list-style-type: none"> <li><i>Deposit type, geological setting and style of mineralisation.</i></li> </ul>	<ul style="list-style-type: none"> <li>The Lachlan Project lies within the Central Lachlan Fold belt in NSW, which is considered prospective for polymetallic epithermal and volcanic hosted (Cu, Pb, Zn, Au, Ag), orogenic (Au) and intrusion related deposits (Au, Cu).</li> <li>The Yarindury Project lies within the Molong Volcanic Belt of the Lachlan Fold belt in NSW, which is considered prospective for Cu-Au porphyry style mineralisation. The area is covered by Mesozoic to Palaeozoic cover.</li> <li>The Mabel Creek project lies within the Northern Gawler Craton of South Australia, it straddles the Mabel Creek Ridge of Nawa Terrain and the Coober Pedy Ridge of the Mount Woods Complex. The Mabel Creek Project is considered prospective for IOCG mineralisation (e.g. Olympic Dam and Prominent Hill), orogenic Au mineralisation and REE. The area is covered by Mesozoic to Palaeozoic cover.</li> </ul>
Drill-hole Information	<ul style="list-style-type: none"> <li><i>A summary of all information material to the understanding of the exploration results including a tabulation of the following information for all Material drill-holes:</i> <ul style="list-style-type: none"> <li><i>easting and northing of the drill-hole collar</i></li> <li><i>elevation or RL (Reduced Level – elevation above sea level in metres) of the drill-hole collar</i></li> <li><i>dip and azimuth of the hole</i></li> <li><i>down hole length and interception depth</i></li> <li><i>hole length.</i></li> </ul> </li> <li><i>If the exclusion of this information is justified on the basis that the information is not material and this exclusion does not detract from the understanding of the report, the Competent Person should clearly explain why this is the case.</i></li> </ul>	<ul style="list-style-type: none"> <li>All historical drilling intercepts have been appropriately referenced to source information.</li> <li>The Mabel Creek Project has only 16 historical holes which have intersected basement with no mineralised grades of significance reported, only evidence of alteration. Talisman Mabel Creek Project drill hole information is detailed in the announcement.</li> </ul>

For personal use only





Criteria	JORC Code explanation	Commentary
Data aggregation methods	<ul style="list-style-type: none"> <li><i>In reporting Exploration Results, weighting averaging techniques, maximum and/or minimum grade truncations (e.g. cutting of high grades) and cut-off grades are usually material and should be stated.</i></li> <li><i>Where aggregate intercepts incorporate short lengths of high grade results and longer lengths of low grade results, the procedure used for such aggregation should be stated and some typical examples of such aggregations should be shown in detail.</i></li> <li><i>The assumptions used for any reporting of metal equivalent values should be clearly stated.</i></li> </ul>	<ul style="list-style-type: none"> <li>Significant intercepts are calculated using length weighted average grade calculations for all elements reported. Core loss and intervals not sampled within significant intercepts are excluded from length weighted calculations.</li> </ul>
Relationship between mineralisation widths and intercept lengths	<ul style="list-style-type: none"> <li><i>These relationships are particularly important in the reporting of Exploration Results.</i></li> <li><i>If the geometry of the mineralisation with respect to the drill-hole angle is known, its nature should be reported.</i></li> <li><i>If it is not known and only the down hole lengths are reported, there should be a clear statement to this effect (e.g. ‘down hole length, true width not known’).</i></li> </ul>	<ul style="list-style-type: none"> <li>The orientation of key structures may be locally variable and the relationship to mineralisation is yet to be identified.</li> <li>Drill holes are planned as perpendicular as possible in plan-view to intersect the geological targets. At this early stage of exploration, drilling and geological knowledge of the project accurate true widths are not yet possible as there is insufficient data.</li> <li>Drill-holes intersections are reported as down hole widths.</li> </ul>
Diagrams	<ul style="list-style-type: none"> <li><i>Appropriate maps and sections (with scales) and tabulations of intercepts should be included for any significant discovery being reported These should include but not be limited to a plan view of drill-hole collar locations and appropriate sectional views.</i></li> </ul>	<ul style="list-style-type: none"> <li>Appropriate maps with scale are included within the body of the accompanying document.</li> </ul>
Balanced reporting	<p><sup>2</sup> <i>Where comprehensive reporting of all Exploration Results is not practicable, representative reporting of both low and high grades and/or widths should be practiced to avoid misleading reporting of Exploration Results.</i></p>	<ul style="list-style-type: none"> <li>All relevant data is reported and provides an appropriate representation of the results.</li> <li>The accompanying document is considered to represent a balanced report.</li> </ul>



Criteria	JORC Code explanation	Commentary
Other substantive exploration data	<p>Other exploration data, if meaningful and material, should be reported including (but not limited to): geological observations; geophysical survey results; geochemical survey results; bulk samples – size and method of treatment; metallurgical test results; bulk density, groundwater, geotechnical and rock characteristics; potential deleterious or contaminating substances.</p>	<ul style="list-style-type: none"> <li>Walkers Hill Project - An IP survey at the Sheeppark Prospect, cited in this report, was completed by Fender for Talisman Mining (TLM) in 2023. The survey comprised two lines of dipole– dipole IP (DDIP), each 900m and 1000m in length, using 50 m dipoles spaced 200 m apart, and oriented southwest to northeast. Initial data processing was undertaken by Southern Cross Geoscience. In 2025, the raw data files were provided to Mitre Geophysics, who completed a full re-analysis of the dataset, including QAQC and 2D inversion modelling.</li> <li>Yarindury - All historical geophysical data was reviewed and interpreted by John Donohue, Principal Geophysicist from Geo-Discovery Group. Airborne magnetics. • Grid filtering and enhancements was undertaken on NSW Government Dubbo 1991 (400 m line spaced) airborne magnetics survey and Newcrest Mendoran (100 m spaced) 2017 airborne magnetics survey. 3D smooth modelling was completed using Geosoft’s Voxi mag modelling program using Magnetic Vector Inversion (MVI) and normal induction modes. MVI modes accommodated remanence effects. Selected 2.5D modelling of (NSSF) profile grid data in Model Vision. • Gridding and high pass filtering of a 2017 ground gravity (1km line spacing and 200m station spacing) acquired by Atlas Geophysics for Newcrest.</li> </ul>
Further work	<ul style="list-style-type: none"> <li>The nature and scale of planned further work (e.g. tests for lateral extensions or depth extensions or large-scale step-out drilling).</li> <li>Diagrams clearly highlighting the areas of possible extensions, including the main geological interpretations and future drilling areas, provided this information is not commercially sensitive.</li> </ul>	<ul style="list-style-type: none"> <li>Planned future work at the Walkers Hill Project includes soil sampling, mapping, Auger, Aircore and RC drilling and geophysical surveys.</li> <li>Planned future work at the East Peak Hill Project includes soil sampling, mapping, Auger, Aircore drilling.</li> <li>Planned future work at the Yarindury Project includes geophysical surveys and RC/Diamond drilling.</li> <li>Planned future work at Mabel Creek project includes MR/diamond drilling and geophysical surveys.</li> </ul>

For personal use only



## Appendix 5B

### Mining exploration entity or oil and gas exploration entity quarterly cash flow report

Name of entity

Talisman Mining Limited

ABN

71 079 536 495

Quarter ended ("current quarter")

30 September 2025

Consolidated statement of cash flows		Current quarter \$A'000	Year to date (3 months) \$A'000
<b>1.</b>	<b>Cash flows from operating activities</b>		
1.1	Receipts from customers	-	-
1.2	Payments for		
	(a) exploration & evaluation	(1,353)	(1,353)
	(b) development	-	-
	(c) production	-	-
	(d) staff costs	(226)	(226)
	(e) administration and corporate costs	(342)	(342)
1.3	Dividends received (see note 3)	-	-
1.4	Interest received	26	26
1.5	Interest and other costs of finance paid	(1)	(1)
1.6	Income taxes paid	-	-
1.7	Government grants and tax incentives	-	-
1.8	Other (Wonmunna Iron Ore Royalties)	1,547	1,547
<b>1.9</b>	<b>Net cash from / (used in) operating activities</b>	<b>(349)</b>	<b>(349)</b>
<b>2.</b>	<b>Cash flows from investing activities</b>		
2.1	Payments to acquire or for:		
	(a) entities	-	-
	(b) tenements	-	-
	(c) property, plant and equipment	-	-
	(d) exploration & evaluation	-	-
	(e) investments	-	-
	(f) other non-current assets	-	-

## Mining exploration entity or oil and gas exploration entity quarterly cash flow report

Consolidated statement of cash flows		Current quarter \$A'000	Year to date (3 months) \$A'000
2.2	Proceeds from the disposal of:		
	(a) entities	-	-
	(b) tenements	-	-
	(c) property, plant and equipment	26	26
	(d) investments	-	-
	(e) other non-current assets	-	-
2.3	Cash flows from loans to other entities	-	-
2.4	Dividends received (see note 3)	-	-
2.5	Other - Tenement security deposit (payments) / refunds	(79)	(79)
<b>2.6</b>	<b>Net cash from / (used in) investing activities</b>	<b>(53)</b>	<b>(53)</b>

<b>3.</b>	<b>Cash flows from financing activities</b>		
3.1	Proceeds from issues of equity securities (excluding convertible debt securities)	-	-
3.2	Proceeds from issue of convertible debt securities	-	-
3.3	Proceeds from exercise of options	-	-
3.4	Transaction costs related to issues of equity securities or convertible debt securities	-	-
3.5	Proceeds from borrowings	-	-
3.6	Repayment of borrowings	-	-
3.7	Transaction costs related to loans and borrowings	-	-
3.8	Dividends paid	-	-
3.9	Other (ROU Lease Repayments)	(17)	(17)
<b>03.10</b>	<b>Net cash from / (used in) financing activities</b>	<b>(17)</b>	<b>(17)</b>

<b>4.</b>	<b>Net increase / (decrease) in cash and cash equivalents for the period</b>		
4.1	Cash and cash equivalents at beginning of period	4,492	4,492
4.2	Net cash from / (used in) operating activities (item 1.9 above)	(349)	(349)
4.3	Net cash from / (used in) investing activities (item 2.6 above)	(53)	(53)
4.4	Net cash from / (used in) financing activities (item 3.10 above)	(17)	(17)

## Mining exploration entity or oil and gas exploration entity quarterly cash flow report

<b>Consolidated statement of cash flows</b>		<b>Current quarter \$A'000</b>	<b>Year to date (3 months) \$A'000</b>
4.5	Effect of movement in exchange rates on cash held	-	-
<b>4.6</b>	<b>Cash and cash equivalents at end of period</b>	<b>4,073</b>	<b>4,073</b>

<b>5.</b>	<b>Reconciliation of cash and cash equivalents</b> at the end of the quarter (as shown in the consolidated statement of cash flows) to the related items in the accounts	<b>Current quarter \$A'000</b>	<b>Previous quarter \$A'000</b>
5.1	Bank balances	1,463	882
5.2	Call deposits	2,610	3,610
5.3	Bank overdrafts	-	-
5.4	Other (provide details)	-	-
<b>5.5</b>	<b>Cash and cash equivalents at end of quarter (should equal item 4.6 above)</b>	<b>4,073</b>	<b>4,492</b>

<b>6.</b>	<b>Payments to related parties of the entity and their associates</b>	<b>Current quarter \$A'000</b>
6.1	Aggregate amount of payments to related parties and their associates included in item 1	161
6.2	Aggregate amount of payments to related parties and their associates included in item 2	-

*Note: if any amounts are shown in items 6.1 or 6.2, your quarterly activity report must include a description of, and an explanation for, such payments.*

## Mining exploration entity or oil and gas exploration entity quarterly cash flow report

7. <b>Financing facilities</b> <i>Note: the term "facility" includes all forms of financing arrangements available to the entity. Add notes as necessary for an understanding of the sources of finance available to the entity.</i>	<b>Total facility amount at quarter end \$A'000</b>	<b>Amount drawn at quarter end \$A'000</b>
7.1 Loan facilities	-	-
7.2 Credit standby arrangements	-	-
7.3 Other (please specify)	-	-
7.4 <b>Total financing facilities</b>	-	-
7.5 <b>Unused financing facilities available at quarter end</b>		-
7.6 Include in the box below a description of each facility above, including the lender, interest rate, maturity date and whether it is secured or unsecured. If any additional financing facilities have been entered into or are proposed to be entered into after quarter end, include a note providing details of those facilities as well.		

8. <b>Estimated cash available for future operating activities</b>	<b>\$A'000</b>
8.1 Net cash from / (used in) operating activities (item 1.9)	(349)
8.2 (Payments for exploration & evaluation classified as investing activities) (item 2.1(d))	-
8.3 Total relevant outgoings (item 8.1 + item 8.2)	(349)
8.4 Cash and cash equivalents at quarter end (item 4.6)	4,073
8.5 Unused finance facilities available at quarter end (item 7.5)	-
8.6 Total available funding (item 8.4 + item 8.5)	4,073
8.7 <b>Estimated quarters of funding available (item 8.6 divided by item 8.3)</b>	11.67
<i>Note: if the entity has reported positive relevant outgoings (ie a net cash inflow) in item 8.3, answer item 8.7 as "N/A". Otherwise, a figure for the estimated quarters of funding available must be included in item 8.7.</i>	
8.8 If item 8.7 is less than 2 quarters, please provide answers to the following questions:	
8.8.1 Does the entity expect that it will continue to have the current level of net operating cash flows for the time being and, if not, why not?	
Answer: N/A	
8.8.2 Has the entity taken any steps, or does it propose to take any steps, to raise further cash to fund its operations and, if so, what are those steps and how likely does it believe that they will be successful?	
Answer: N/A	

## Mining exploration entity or oil and gas exploration entity quarterly cash flow report

8.8.3 Does the entity expect to be able to continue its operations and to meet its business objectives and, if so, on what basis?

Answer: N/A

Note: where item 8.7 is less than 2 quarters, all of questions 8.8.1, 8.8.2 and 8.8.3 above must be answered.

### Compliance statement

- 1 This statement has been prepared in accordance with accounting standards and policies which comply with Listing Rule 19.11A.
- 2 This statement gives a true and fair view of the matters disclosed.

Date: 21 October 2025.....

Authorised by: By the Board.....  
(Name of body or officer authorising release – see note 4)

### Notes

1. This quarterly cash flow report and the accompanying activity report provide a basis for informing the market about the entity's activities for the past quarter, how they have been financed and the effect this has had on its cash position. An entity that wishes to disclose additional information over and above the minimum required under the Listing Rules is encouraged to do so.
2. If this quarterly cash flow report has been prepared in accordance with Australian Accounting Standards, the definitions in, and provisions of, *AASB 6: Exploration for and Evaluation of Mineral Resources* and *AASB 107: Statement of Cash Flows* apply to this report. If this quarterly cash flow report has been prepared in accordance with other accounting standards agreed by ASX pursuant to Listing Rule 19.11A, the corresponding equivalent standards apply to this report.
3. Dividends received may be classified either as cash flows from operating activities or cash flows from investing activities, depending on the accounting policy of the entity.
4. If this report has been authorised for release to the market by your board of directors, you can insert here: "By the board". If it has been authorised for release to the market by a committee of your board of directors, you can insert here: "By the [name of board committee – eg Audit and Risk Committee]". If it has been authorised for release to the market by a disclosure committee, you can insert here: "By the Disclosure Committee".
5. If this report has been authorised for release to the market by your board of directors and you wish to hold yourself out as complying with recommendation 4.2 of the ASX Corporate Governance Council's *Corporate Governance Principles and Recommendations*, the board should have received a declaration from its CEO and CFO that, in their opinion, the financial records of the entity have been properly maintained, that this report complies with the appropriate accounting standards and gives a true and fair view of the cash flows of the entity, and that their opinion has been formed on the basis of a sound system of risk management and internal control which is operating effectively.