

SIGNIFICANT MINERALISATION CONFIRMED IN SWEDEN

Key Highlights

- **Re-assaying of historical core validates previously incomplete data, demonstrating significant mineralisation over three project areas in Sweden**
- **Significant shear-hosted mineralisation recognised at Bjorkberget including**
 - BJK78002 which included **12 metres at 0.12% U₃O₈** from 42.5m, including **4 metres at 0.23% U₃O₈** from 46 metres
 - BJK78001 which included **2.5 metres at 0.27% U₃O₈** from 169.5 metres
 - Mineralisation appears open at depth and along strike
- **Limited historic data and core at Ravaberget identified significant thickness of mineralisation including**
 - RVB76003 which included **14.4 metres at 0.15% U₃O₈** from 16.1 metres depth
 - Mineralisation appears open at depth and geophysical data supports interpretation of 20km of prospectivity between Rava and Bjork, within the Trollberget project
- **Further sampling at Virka supports Aura Energy's¹ previously released results, whilst outlining**
 - Additional high-grade mineralisation identified in VIR80005 including **2.6 metres at 0.15% U₃O₈** from 27.8 metres
 - Additional high-grade mineralisation identified in VIR8004 including **2.75 metres at 0.10% U₃O₈** from 70 metres
 - Localised high-grade zones noted over 0.5 metres, including VIR80013 from **26.3 metres at 0.66% U₃O₈**
 - Mineralisation at Virka remains open along strike to the southwest and down dip.
- **Sweden is scheduled to remove the existing ban on uranium exploration in January 2026, paving the way to the next phases of exploration for all three project areas².**

Basin Energy Limited (ASX:BSN) ('Basin' or the 'Company') is pleased to provide results from geochemical sampling and data validation of historical diamond drill core from its Björkberget ('Bjork'), Rävaberget ('Rava') and Virka Projects (collectively the "North Sweden Projects"), refer figure 1.

A total of 59 drillholes were reviewed across the projects, with drill hole collar details provided in Appendix 2. The program was successful in that the geochemistry has infilled missing data and verified the quality of the available historical data.

¹ Refer ASX Announcement Basin Energy (ASX:BSN), 31st October 2024, "Basin Energy to Acquire Scandinavian Uranium and Green Energy Metals Portfolio"

² Refer ASX Announcement Basin Energy (ASX:BSN), 14th January 2025, "Basin Energy Provides Scandinavian Exploration and Uranium Policy Update"



The data identified significant thickness and grade of uranium within all three project areas. Basin interprets that the results support the potential for further mineralisation both within the existing prospect areas, and broader region, specifically under shallow cover through the Trollberget project, refer figure 1.

Basin’s Managing Director, Pete Moorhouse commented:

“These results demonstrate the presence of an active mineralising system across three project areas each capable of producing significant thickness and grades of uranium mineralisation. The work completed in the 1970s and 80s was of good calibre, however, it was tightly focussed on the limited areas of outcrop. The two best intervals occur at Rava and Bjork, with Basin staking the entire 20 kilometres of prospective ground between these two prospects, which has never seen a drill hole.

With the upcoming policy change in Sweden paving the way to the next phase of uranium opportunity, Basin will use this data along with its in house uranium exploration expertise to explore along strike, to realise the scale of potential for the district. Basin Energy’s early-mover advantage, positions the Company to be at the forefront of a revitalised European uranium and critical minerals sector, supporting the continent’s shift toward secure, low-carbon energy supply chains.”

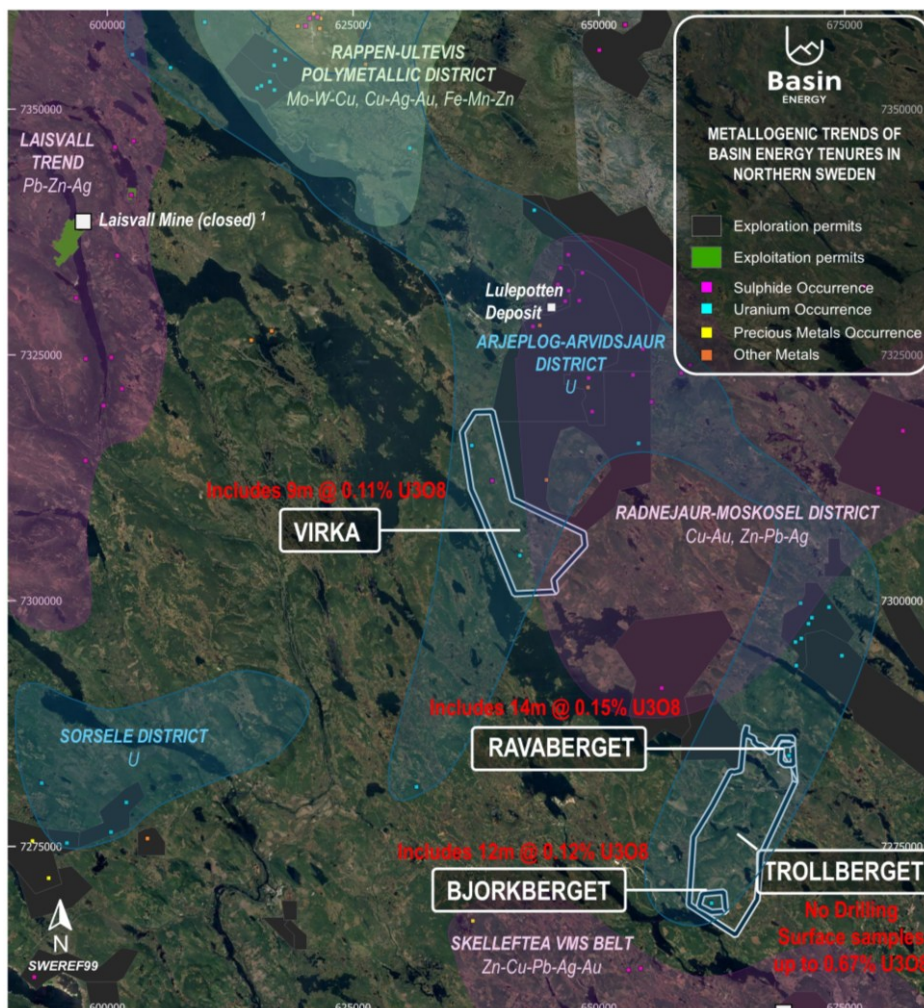


Figure 1: Location map of Basin’s Projects in northern Sweden with drilling highlights per prospect, in relation to known uranium districts and mineral occurrences as reported by the Swedish Geological Survey.

Historical Data Verification

As detailed in Appendix 2 and 3, geochemical sampling to verify historical data from a number of holes have been completed on each of the projects. To achieve this, Basin has resampled holes from each project to cross check the historical data and historical assays reported. These samples were all $\frac{1}{4}$ core, vs the historical $\frac{1}{2}$ core samples. It is noted that it is requirement that $\frac{1}{4}$ of the core need to remain, as such a full comparison of the samples could not be completed. The samples returned results within the accuracy that would be expected for the shear-hosted style of mineralisation and the sampling method. As such the Competent Person considers the historical data suitable to be basis for exploration results to be reported.

Below is a summary of each project area and the returned results.

Bjorkberget

The Bjork project is a subset of the Trollberget project, located at the southern tip approximately 20 kilometres from Rava, refer figure 1. Historical drilling at Björk comprised 40 drillholes totalling 5,939 metres, completed by SGU between 1976 and 1978 (Figure 2), along with one additional drillhole of 70.25 metres drilled by Geoforum in 2008. Of the 41 historical holes, 20 were assayed by SGU for selected elements; however, uranium assay data are not consistently available in the existing record archives. Most drillholes were gamma logged in accordance with the logging standards in place at the time.

Twenty-two drillholes were selected and re-sampled by Basin from the Bjork core archive. Whilst full verified historical and accompanying new data is provided in Appendix 2 and 3, key highlights showing intervals with a grade X thickness equivalent of greater than 2,000 ppm U_3O_8 from these holes include:

- BJK78002 which included **12 metres at 0.12% U_3O_8** from 42.5m, *including 4 metres at 0.23% U_3O_8* from 46 metres
- BJK78001 which included **2.5 metres at 0.27% U_3O_8** from 169.5 metres
- BJK76013 which included **5 metres at 0.09% U_3O_8** from 81 metres *and 4.5 metres at 0.05% U_3O_8* from 143.5 metres
- BJK79004 which included **1.5 metres at 0.31% U_3O_8**

Björkberget assays display the strongest base-metal results of the three projects. Results confirmed the presence of zinc, including the following intervals which recorded above 1% zinc over 0.5 metres or greater:

- BJK78006B which included 0.5 metres at **5.64% Zn from** 123.5 metres within a broader interval of 1.5 metres of 1.15% zinc from 123 metres, and 2 metres at 0.55% zinc from 15.25 metres
- BJK79003 which included 0.5 metres at **1.51% Zn from** 88.3 metres
- BJK81003 which included 0.5 metres at **1.01% Zn from** 11.0 metres and 0.5 metres at **1.07% Zn from** 21.0 metres

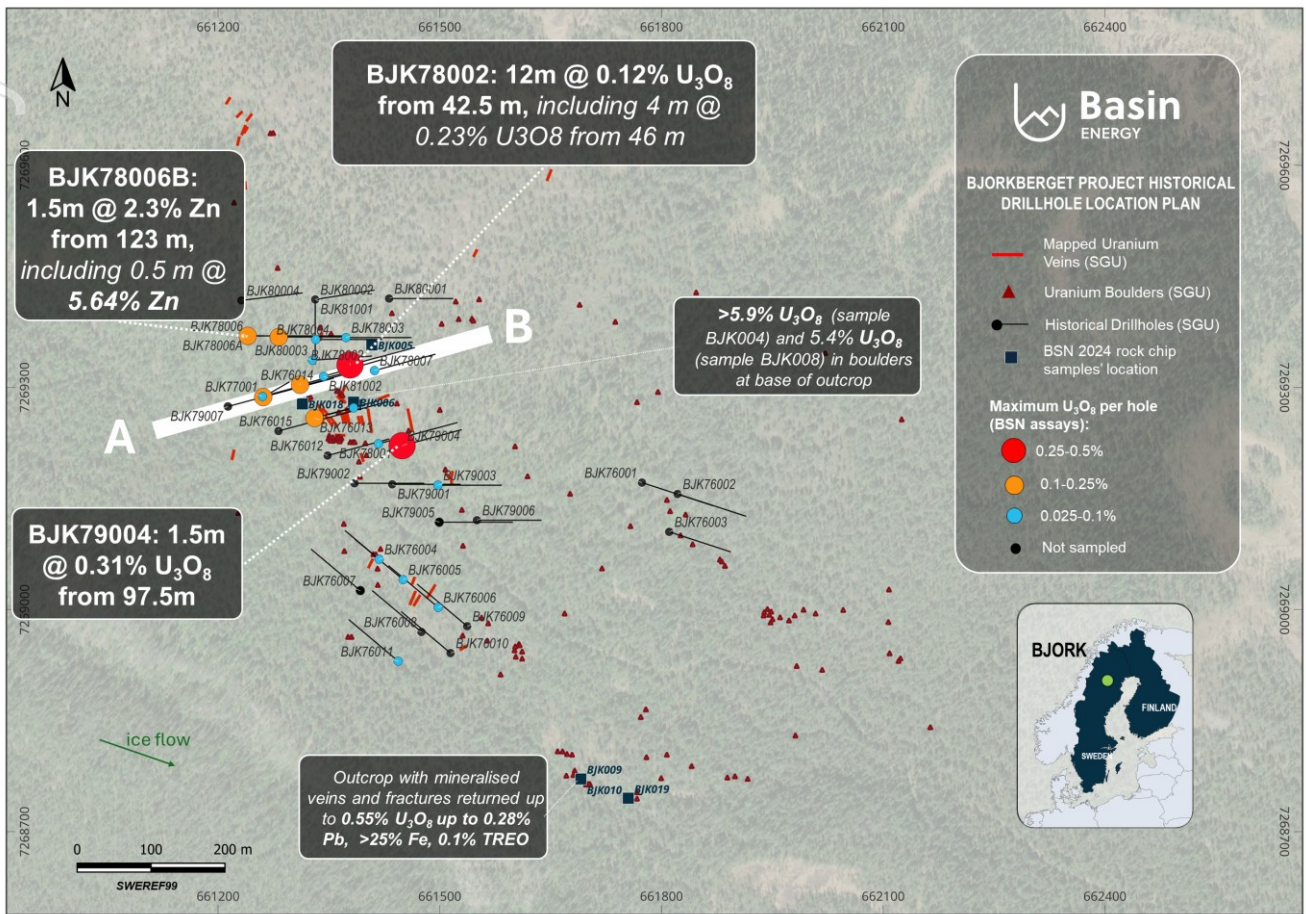


Figure 2: Drill hole location map displaying verified uranium assays results at Bjork. Plan map shows the cross-section location.

For personal use only



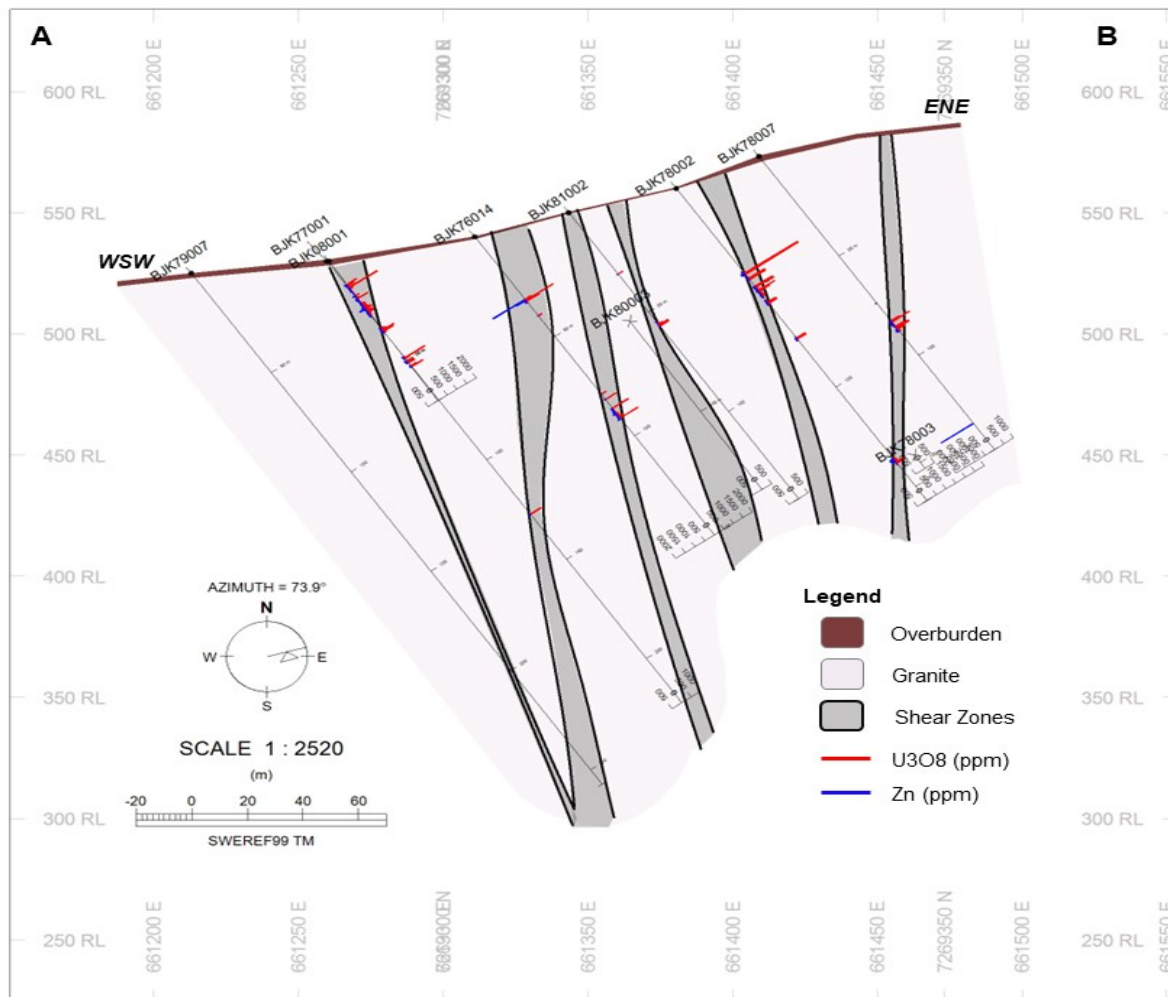


Figure 3: WSW-ENE orientated cross-section of Bjork drillholes BJK79007, BJK77001, BJK08001, BJK76014, BJK81002, BJK78002 and BJK78007. Drillhole traces display U3O8 (ppm) results in red and Zinc (ppm) results on other part of the drillhole trace. Cross-section shows uranium intervals mostly confined to shear zones. Shear zones are interpreted from structural and geological observations from non-orientated historical core.

Rävaberget

The Rava project is a subset of the Trollberget project, located at the northern tip approximately 20 kilometres from Bjork refer figure 1. Historical drilling at Rava comprised 42 diamond drillholes totalling 4,262 metres, completed by SGU between 1975 and 1977, refer figure 3. All drillholes were gamma logged at time of drilling in accordance with the logging standards of the time, although only three holes—RVB76003, RVB76009, and RVB77005—were assayed by the Swedish Geological Survey (“SGU”) on select intervals for uranium and selected elements.

Basin Energy identified and prioritised core intervals from six archived diamond drillholes for re-assay and data validation.

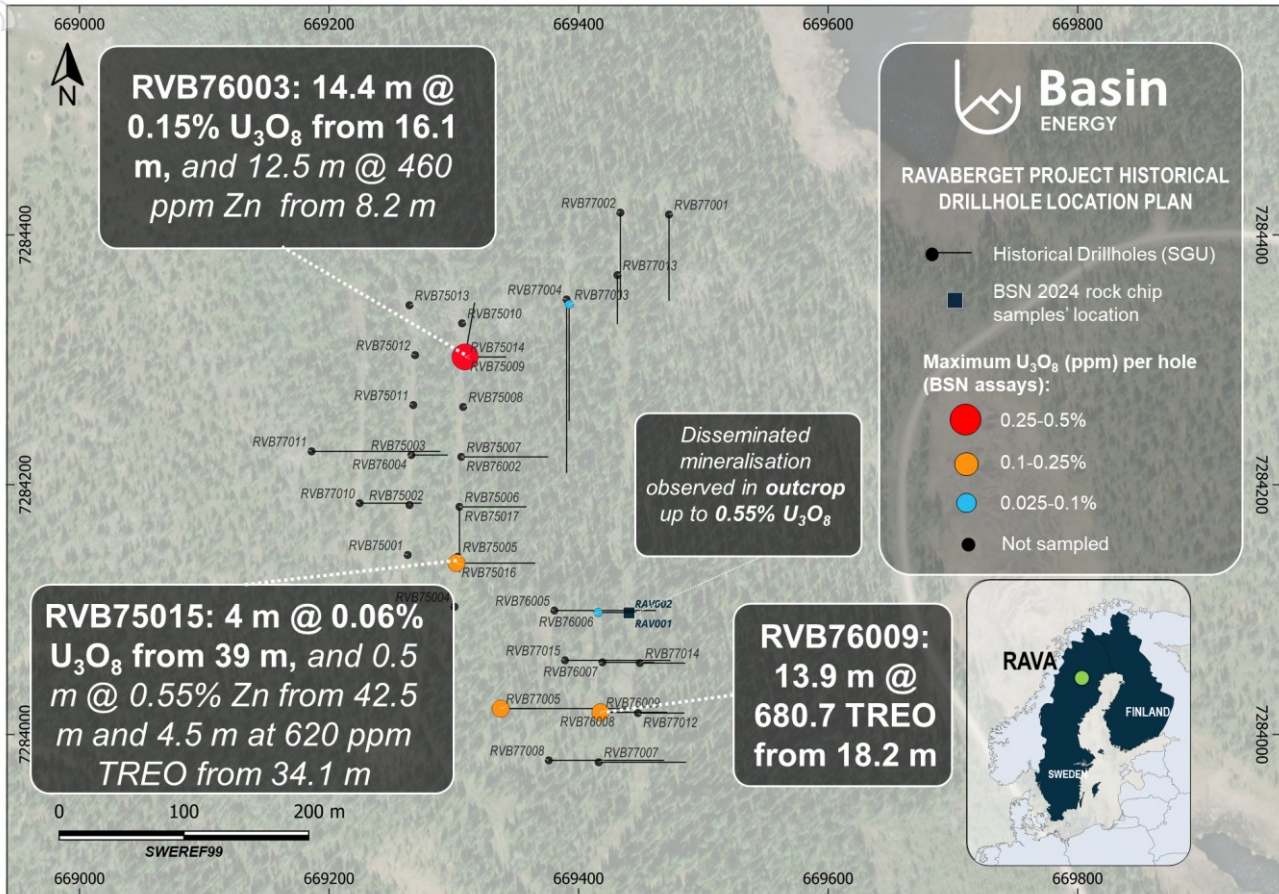


Figure 3: Drill hole location map displaying verified uranium assay results at Rava.

Whilst full verified historical and accompanying new data is provided in Appendix 2 and 3, key highlights showing intervals with a minimum grade X thickness equivalent of greater than 900 ppm U_3O_8 from these holes, or 5 metres at 600 ppm TREO from these holes include:

- RVB76003 which included **14.4 metres at 0.15% U_3O_8** from 16.1 metres, and
 - 12.5 metres at 460ppm Zn from 8.2 metres including 2 metres at 2,442 ppm Zn from 16.3 metres depth.
- RVB75015 which included **4 metres at 0.06% U_3O_8** from 39 metres including 1 metre at 0.15% U_3O_8 from 39 metres, and
 - 0.5 metres at 0.55% Zn from 42.5 m
 - 4.5 metres at 620ppm TREO from 34.1 m.
- RVB76005 which included **1.5 metres at 0.08% U_3O_8** from 85.25 metres
- RVB76006 which included **3.2 metres at 0.03% U_3O_8** from 18.2 metres
- RVB77009 which included **13.9 metres at 680.7ppm TREO** from 18.2 metres and
 - **4.5 metres at 0.06% U_3O_8** from 40 metres

The standout drillhole from Rava of those reviewed by Basin is RVB76003. Geological observations from historical drill core and select rock chip samples from a granitic outcrop near the historical drilling site show visible disseminated fine grained uraninite. This is in contrast to the interpreted structurally hosted mineralisation observed at Bjork, and it is interpreted that potentially the controlling structure is located undercover, west of this outcrop within the Trollberget exploration licence staked by Basin in Q4 2024³.

Virka Assay Results

All archived diamond drill core at Virka (20 drillholes, 2,654.3 m) was reviewed by Basin's geologists. Drilling was completed by the Swedish Geological Survey ("SGU") between 1980 and 1982 and no multi element assay data was reported for this program^{4,5}. Aura Energy (ASX: AEE) assayed the partial cores in 2008 which provides increased confidence in this system, although some of the best mineralized intervals, as indicated by historic downhole radiometric data and remaining quarter cut core could not be sampled as insufficient core remained⁶.

Eight drillholes were re sampled by Basin from the Virka core archive. No new historical results are reported in this release. Whilst all new data is provided in Appendix 2, key highlights showing intervals with a grade X thickness equivalent of greater than 1,000 ppm U₃O₈ from these holes include:

- VIR80013 which included **8.2 metres at 0.11% U₃O₈** from 25.3 metres including previously unrecognised localised high-grade zones noted over **0.5 metres at 0.66% U₃O₈ from 26.3 metres**
- Additional high-grade mineralisation identified in VIR80005 including **2.6 metres at 0.15% U₃O₈** from 27.8 metres
 - *This falls within an interval that Aura Energy reported as **17 metres at 0.07% U₃O₈ from 23 metres**²*
- Previously unrecognised mineralisation in VIR80014 including **3.5 metres at 0.04% U₃O₈** from 70 metres
- Additional high-grade mineralisation identified in VIR80015 including **2.0 metres at 0.10% U₃O₈** from 48.25 metres

The mineral distribution at Virka sees a general increase in grade and thickness in the central part of the system which remains untested at depth. Basin sees this as a priority for further work.

³ Refer ASX Announcement Basin Energy (ASX:BSN), 13th February 2025: High-Grade mineralisation identified at North Sweden projects.

⁴ Refer ASX Announcement Basin Energy (ASX:BSN), 31st October 2024, "Basin Energy to Acquire Scandinavian Uranium and Green Energy Metals Portfolio"

⁵ Refer ASX Announcement Basin Energy (ASX:BSN), 06th November 2024, "Exploration Program Commences at Virka"

⁶ Refer ASX Announcement Aura Energy (ASX:AEE), 18th March 2008, "Drill core assays confirm high grade uranium mineralisation up to 0.68% U₃O₈ at its Virka Project in Northern Sweden."

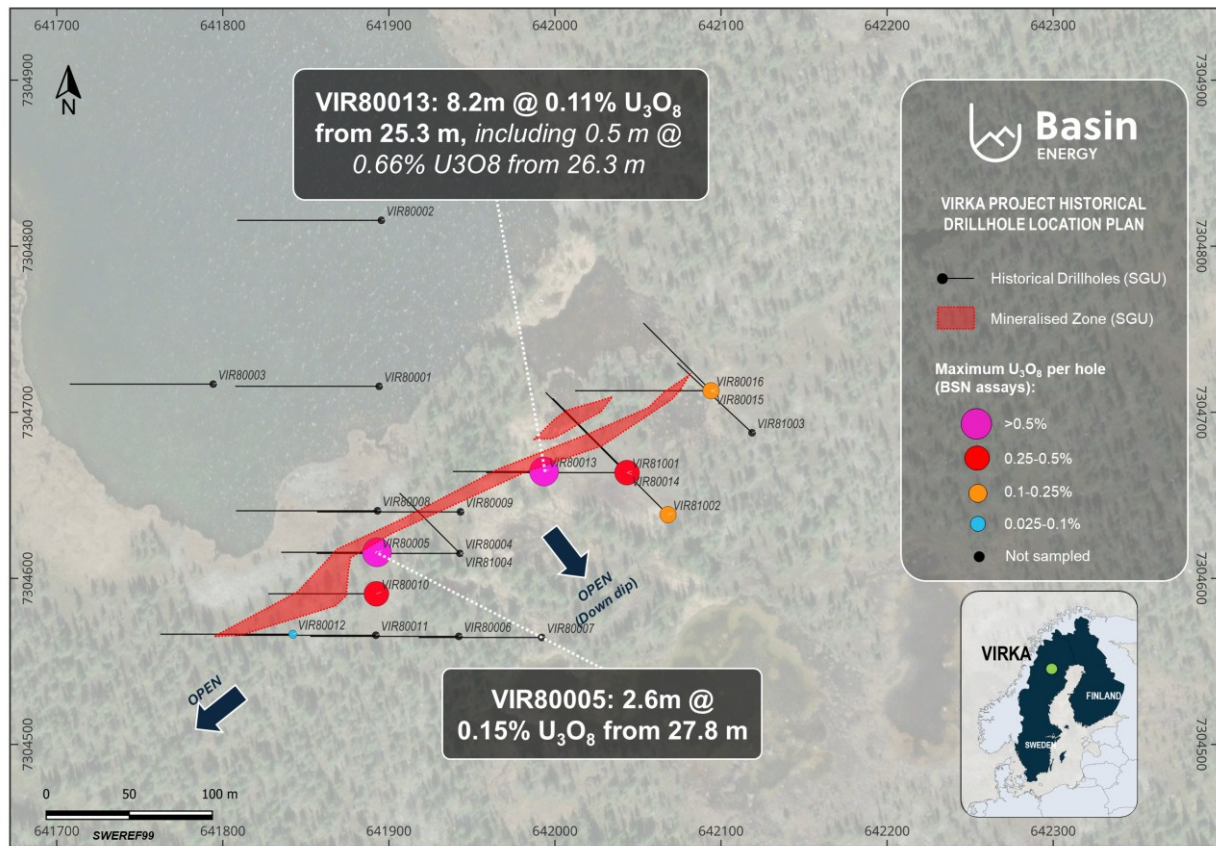


Figure 4: Drill hole location map displaying verified uranium assay results.

Program Overview

The North Sweden Projects are located approximately 140 km northwest of Skellefteå and 160 km southwest of Luleå. The Projects are strategically positioned in a highly prospective metallogenic belt within the Fennoscandian Shield, hosting a diverse range of mineral deposits (Figure 1). Geologically, the area is dominated by Proterozoic-aged metavolcanic sequences and extensive granitoid intrusions, and is structurally complex due to multiple orogenic events, particularly the Svecofennian orogeny.

The region hosts significant mineralisation, including volcanogenic massive sulphide (VMS), orogenic gold, and holds a strong potential for shear-hosted and epigenetic uranium and/or REE mineralisation. The Arjeplog-Arvidsjaur-Sorsele uranium district is host of approximately 30 known mineralised prospects (Figure 1).

In Q4 2024, Basin conducted initial reconnaissance mapping^{7,8,9,10} and an extensive compilation of historical data, which included a detailed review of the SGU core archive, across its North Sweden Projects. Following this work, the Company completed in Q1 2025 a program of re-logging and re-assaying of selected historical diamond drill core from the Bjork, Rava, and Virka projects.

A total of 59 drillholes were reviewed across the projects. Logging included detailed geological and structural observations, radiometric measurements, and photographic documentation. 103 selected core trays were subsequently shipped to ALS Laboratories in early Q2 2025 for sawing, sample preparation, and analysis using modern ICP-MS techniques.

Although some of the most mineralised core intervals were missing or unsampleable in several holes, sampling of the available core returned high-grade uranium intersections across multiple intervals and projects (Appendix 3). Notably, only minor ancillary metals were noted, primarily zinc. The new assay results showed strong correlation with the original SGU data where direct comparisons were possible. This consistency between datasets validates the historical assay records and reinforces confidence in the integrity of the broader historical drill database.

New assay results demonstrate a good correlation with original SGU data, typically within 15% variance for uranium grades where direct comparisons were possible. Discrepancies are attributed to core sample size variation, the mineralisation nature of shear hosted system and analytical method differences. Typically, results sub 200 ppm U₃O₈ appeared higher grade in the historical data, however above 200ppm correlation improved. Overall, the consistency between datasets validates the historical assay records and provides confidence in the integrity of the broader historical drill database.

Geological observations and assay results confirm that high-grade uranium mineralisation is closely associated with hematite, magnetite, and sulphide phases, including sphalerite (ZnS) and galena (PbS). At Virka and Bjork, uranium mineralisation is structurally controlled in microfracture stockwork, while at Rava it occurs as finely disseminated mineralisation within metasomatized granite. Mineralisation is not closed off at depth by historical drilling and multiple target opportunities remain to fully test the uranium systems on the Projects.

These results highlight the strong exploration potential of Basin's northern Sweden portfolio, located within a geologically favourable region hosting multiple uranium and base-metal occurrences. Basin's 2025 re-logging and re-assay program establishes a robust technical foundation for future drill targeting aimed at defining the scale and grade of the mineralising system(s) at play within the North Sweden Projects.

⁷ Refer ASX Announcement Basin Energy (ASX:BSN), 06th November 2024: "Exploration Program Commences at Virka".

⁸ Refer ASX Announcement Basin Energy (ASX:BSN), 13th February 2025: High-Grade mineralisation identified at North Sweden projects.

⁹ Refer ASX Announcement Basin Energy (ASX:BSN), 25th February 2025: Virka Project Sampling Returns High-Grade Mineralisation Confirming Polymetallic Discovery Potential.

¹⁰ Refer ASX Announcement Basin Energy (ASX:BSN), 15th April 2025: Basin Identifies Structures Associated with Mineralisation at North Sweden Projects.

This announcement has been approved for release by the Board of Basin Energy.

Enquiries

Pete Moorhouse
Managing Director
pete.m@basinenergy.com.au
+61 7 3667 7449

Chloe Hayes
Investor & Media Relations
chloe@janemorganmanagement.com.au
+61 458 619 317

For personal use only



Company Overview

About Basin Energy

Basin Energy (ASX: **BSN**) is a green energy metals exploration and development company with an interest in three highly prospective projects positioned in the southeast corner and margins of the world-renowned Athabasca Basin in Canada and has recently entered an agreement to acquire a significant portfolio of Green Energy Metals exploration assets located in Scandinavia.

Directors & Management

Pete Moorhouse	Managing Director
Blake Steele	Non-executive Chairman
Cory Belyk	Non-executive Director
Matthew O’Kane	Non-executive Director
Ben Donovan	Company Secretary
Odile Maufrais	Exploration Manager

Basin Energy

ACN 655 515 110

Shares on Issue

141,079,314

ASX Code

BSN

Investment Highlights

QUEENSLAND (39th)

District scale exploration for REE and Uranium

SWEDEN (6th)

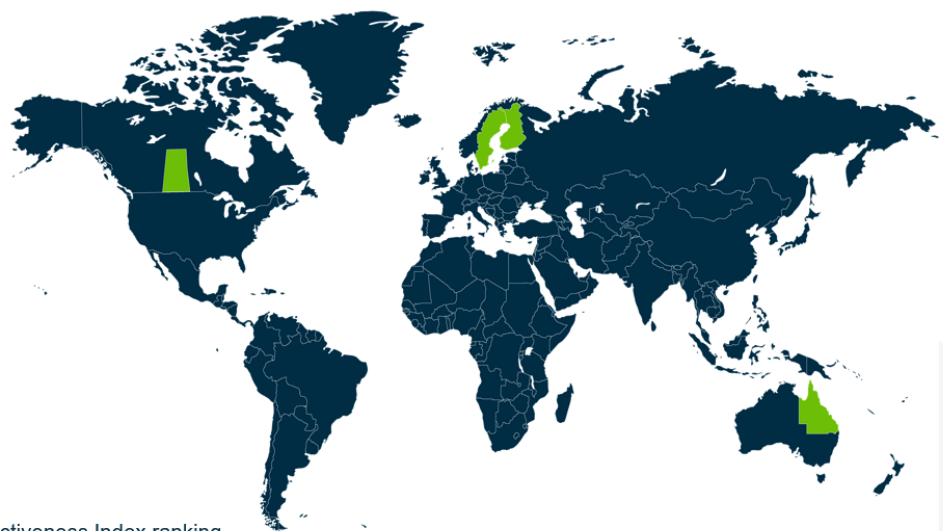
FINLAND (1st)

Green Energy Metals Projects within historical uranium & base metal districts

CANADA (7th)

ATHABASCA BASIN

3 Uranium Projects in the worlds premier uranium district



*2024 Fraser Institute Investment Attractiveness Index ranking

Appendix 1

Competent Persons Statement, Resource Figure Notes and Forward-Looking Statement

The information in this announcement that relates to previous exploration results was first reported by the Company in accordance with ASX listing rule 5.7 in the following Company ASX market releases.

Date	Title
31/10/2024	<i>Basin Energy to Acquire Scandinavian Uranium and Green Energy Metals Portfolio</i>
6/11/2024	<i>Exploration Program Commences at Virka</i>
14/01/2025	<i>Scandinavian Exploration and Uranium Policy Update</i>
16/01/2025	<i>Scandinavian Exploration Portfolio Acquisition Completed</i>
4/02/2025	<i>Basin energy granted Trollberget licence, doubling landholding in the Arvidsjaur-Arjeplog uranium district</i>
13/02/2025	<i>High-Grade Mineralisation Identified at North Sweden Project</i>
25/02/2025	<i>Virka Project Sampling Returns High-Grade Mineralisation</i>
20/03/2025	<i>Rock Chip Results Confirm Polymetallic Potential</i>
15/04/2025	<i>Basin Identifies Structures Associated with Mineralisation at North Sweden Projects</i>

The information that has been extracted from prior announcements referred to in this release, are available to view on <https://basinenergy.com.au/>. The Company confirms that it is not aware of any new information or data that materially affects the information included in the original market announcement and, in the case of exploration results, that all material assumptions and technical parameters underpinning the estimates in the relevant market announcement continue to apply and have not materially changed. The Company confirms that the form and context in which the Competent Person's findings are presented have not been materially modified from the original market announcement.

The information included within this release is a fair representation of available information compiled by Odile Maufrais, M.Sc., a competent person who is a Member of the Australian Institute of Mining and Metallurgy. Odile Maufrais is employed by Basin Energy Ltd as Exploration Manager. Odile Maufrais has sufficient experience that is relevant to the style of mineralisation and type of deposits under consideration and to the activity being undertaken to qualify as a Competent Person as defined in the 2012 edition of the Australasian Code of Reporting of Exploration Results, Mineral Resources and Ore Reserves. Odile Maufrais consents to the inclusion in this presentation of the matters based on her work in the form and context in which it appears.

The information related to the reporting of historic Exploration Results included within this release was additionally reviewed as a fair representation of available information compiled by Jeremy Clark, a competent person who is a Member of the Australasian Institute of Geoscientists. Jeremy is the sole director of Lily Valley International Pty. Ltd working as a consultant of Basin, has sufficient experience that is relevant to the style of mineralisation and type of deposits under consideration and to the activity being undertaken to qualify as a Competent Person as defined in the 2012 edition of the Australasian Code of Reporting of Exploration Results, Mineral Resources and Ore Reserves. Jeremy consents to the inclusion in this release of the matters based on his work in the form and context in which it appears. Jeremy is a shareholder of the Company as previously disclosed by Basin's 2024 annual report.

This announcement includes certain "Forward-looking Statements". The words "forecast", "estimate", "like", "anticipate", "project", "opinion", "should", "could", "may", "target" and other similar expressions are intended to identify forward looking statements. All statements, other than statements of historical fact, included herein, including without limitation, statements regarding forecast cash flows and future expansion plans and development objectives of Basin Energy involve various risks and uncertainties. There can be no assurance that such statements will prove to be accurate and actual results and future events could differ materially from those anticipated in such statements.



Appendix 2

Drill hole collar location detail

Verified holes referred to in release. All locations refer to SWEREF 99 system

HOLE_ID	TENEMENT	EASTING	NORTHING	ELEVATION	Depth	DIP	AZIMUTH	YEAR
BJK08001	Björkberget nr 100	661261	7269287	530	70.25	-55	60	2008
BJK76004	Björkberget nr 100	661418	7269068	500	104	-55	310	1976
BJK76005	Björkberget nr 100	661450	7269040	500	147.54	-55	310	1976
BJK76006	Björkberget nr 100	661498	7269003	500	151.63	-55	310	1976
BJK76007	Björkberget nr 100	661392	7269026	500	150.42	-55	310	1976
BJK76011	Björkberget nr 100	661444	7268930	500	151.26	-55	310	1976
BJK76013	Björkberget nr 100	661330	7269259	544.3	156.09	-55	75	1976
BJK76014	Björkberget nr 100	661311	7269304	557.9	150.05	-55	75	1976
BJK77001	Björkberget nr 100	661260	7269288	542.1	222.33	-55	75	1977
BJK78001	Björkberget nr 100	661417	7269224	542.5	191.79	-55	75	1978
BJK78002	Björkberget nr 100	661379	7269330	573.7	157.15	-55	75	1978
BJK78003	Björkberget nr 100	661373	7269367	582.9	153.15	-55	90	1978
BJK78004	Björkberget nr 100	661332	7269365	576.8	155.35	-55	90	1978
BJK78005	Björkberget nr 100	661282	7269368	567.1	150.63	-55	90	1978
BJK78006B	Björkberget nr 100	661240	7269370	563.4	222.41	-55	90	1978
BJK78007	Björkberget nr 100	661412	7269323	573.2	147.56	-55	75	1978
BJK79003	Björkberget nr 100	661498	7269168	535.4	148.86	-55	90	1979
BJK79004	Björkberget nr 100	661449	7269221	543.1	144.2	-55	75	1979
BJK79005	Björkberget nr 100	661499	7269118	526.8	172.5	-55	90	1979
BJK80003	Björkberget nr 100	661327	7269337	550	139.3	-55	86	1980
BJK81002	Björkberget nr 100	661343	7269315	550	143.95	-55	74	1981
BJK81003	Björkberget nr 100	661383	7269272	540	61	-55	255	1981
VIR80005	Virka nr 100	641893	7304616	454	100.03	-55	270	1980
VIR80010	Virka nr 100	641893	7304591	456	112.85	-55	270	1980
VIR80012	Virka nr 100	641842	7304566	458.6	138.4	-55	270	1980
VIR80013	Virka nr 100	641993	7304664	455.1	95.18	-55	270	1980
VIR80014	Virka nr 100	642043	7304664	455.1	147.38	-55	270	1980
VIR80015	Virka nr 100	642094	7304713	457.1	142.25	-55	270	1980
VIR81001	Virka nr 100	642043	7304664	457.1	109.8	-55	315	1981
VIR81002	Virka nr 100	642068	7304638	457.1	180.75	-55	315	1981
RVB75015	Rävaberget nr 100	669302	7284137	620	109.33	-55	90	1975
RVB76003	Rävaberget nr 100	669309	7284302	610	76.51	-55	10	1976
RVB76006	Rävaberget nr 100	669416	7284098	600	53.15	-55	90	1976
RVB76009	Rävaberget nr 100	669418	7284018	605	132.05	-80	90	1976
RVB77003	Rävaberget nr 100	669392	7284344	615	162.27	-55	180	1977
RVB77005	Rävaberget nr 100	669338	7284021	615	181.16	-55	90	1977

Appendix 3

New geochemical assay data. Results for all samples taken with elements referred to within the release. Excludes broader multielement results.

HOLE_ID	FROM_M	TO_M	Calc_U3O8_%	Zn_ppm	CeO2_ppm	Dy2O3_ppm	Er2O3_ppm	Eu2O3_ppm	Gd2O3_ppm	Ho2O3_ppm	La2O3_ppm	Lu2O3_ppm	Ni2O3_ppm	Pr6O11_ppm	Sm2O3_ppm	Tb4O7_ppm	Tm2O3_ppm	Y2O3_ppm	Yb2O3_ppm	TREO_ppm
BJK08001	11.9	12.4	0.001	80	138	10	8	1	10	2	61	1	61	16	12	2	1	63	6	392
BJK08001	12.4	12.9	0.002	50	139	11	9	2	10	2	59	1	61	16	12	2	1	69	8	402
BJK08001	12.9	13.4	0.145	80	166	16	12	2	16	3	74	1	75	19	16	3	1	94	10	508
BJK08001	13.4	13.9	0.015	90	127	11	9	2	11	2	56	1	56	15	11	2	1	74	7	386
BJK08001	13.9	14.4	0.002	80	123	12	10	2	12	3	51	1	57	15	12	2	1	81	8	390
BJK08001	14.4	15.4	0.001	80	156	11	9	2	12	2	68	1	68	18	13	2	1	74	8	445
BJK08001	15.4	16.4	0.002	40	160	12	10	2	12	3	69	1	71	19	14	2	1	84	9	469
BJK08001	16.4	17.4	0.001	50	139	11	9	1	10	2	63	1	60	16	12	2	1	72	8	406
BJK08001	17.4	17.9	0.001	80	142	11	9	2	11	2	61	1	62	16	12	2	1	70	8	411
BJK08001	17.9	18.4	0.008	50	118	9	7	1	9	2	50	1	51	14	10	2	1	53	6	334
BJK08001	18.4	18.9	0.054	90	148	13	10	2	14	3	63	1	67	18	14	2	1	81	9	446
BJK08001	18.9	19.4	0.002	140	139	11	9	2	12	2	60	1	61	16	12	2	1	73	8	409
BJK08001	19.4	19.9	0.001	120	132	12	10	2	12	3	58	1	60	16	12	2	1	77	8	406
BJK08001	19.9	20.9	0.002	70	126	11	9	2	11	2	54	1	56	15	12	2	1	71	8	380
BJK08001	20.9	21.9	0.015	90	155	13	11	2	13	3	65	1	68	19	14	2	1	82	9	457
BJK08001	21.9	22.9	0.015	90	187	13	11	2	14	3	76	1	77	21	15	2	1	86	9	518
BJK08001	22.9	23.4	0.020	150	175	13	11	2	14	3	72	1	74	20	15	2	1	83	9	495
BJK08001	23.4	23.9	0.030	170	155	14	11	2	14	3	63	1	70	19	14	2	1	85	9	465
BJK08001	23.9	24.4	0.003	60	117	10	8	1	10	2	52	1	52	14	11	2	1	63	7	351
BJK08001	24.4	24.9	0.016	60	132	11	9	1	11	2	57	1	60	16	12	2	1	69	7	393
BJK08001	24.9	25.4	0.020	50	162	12	10	2	13	3	68	1	72	19	14	2	1	80	9	467
BJK08001	25.4	25.9	0.029	90	105	10	9	1	10	2	43	1	48	13	11	2	1	63	7	325
BJK08001	25.9	26.4	0.008	90	113	10	9	1	10	2	48	1	50	14	11	2	1	65	7	343
BJK08001	26.4	26.9	0.006	90	115	12	10	2	11	2	51	1	55	14	12	2	1	69	7	363
BJK08001	26.9	27.9	0.002	90	121	10	8	1	11	2	50	1	55	14	11	2	1	59	7	353
BJK08001	47.9	48.4	0.006	90	151	10	8	1	11	2	67	1	65	18	13	2	1	65	7	421
BJK08001	48.4	48.9	0.106	50	105	17	14	2	12	4	48	2	53	14	12	2	2	140	11	437
BJK08001	48.9	49.4	0.025	70	127	13	11	2	11	3	51	1	56	15	11	2	1	89	8	401
BJK08001	49.9	50.4	0.007	120	110	12	10	2	11	3	51	1	53	14	11	2	1	86	8	374
BJK08001	50.4	50.9	0.033	90	93	9	8	1	9	2	49	1	45	11	9	1	1	63	6	308
BJK08001	50.90	51.40	0.034	90	117	9	7	1	9	2	55	1	54	14	10	1	1	63	6	352
BJK76004	16.3	16.8	0.065	140	122	16	12	2	15	3	53	1	57	15	13	3	2	91	10	414
BJK76004	50	51	0.000	180	12	4	3	1	4	1	5	0	8	2	3	1	0	25	3	72
BJK76004	52	53	0.000	160	12	4	4	1	4	1	5	0	8	2	2	1	0	28	3	75
BJK76004	53	54	0.000	140	26	7	5	1	6	1	11	1	16	4	4	1	1	42	4	129
BJK76005	0.75	1.25	0.039	260	85	21	17	2	17	4	31	2	53	12	14	3	2	123	13	401
BJK76005	56	58	0.000	190	31	6	5	1	5	1	13	0	16	4	4	1	1	35	4	126
BJK76005	58	60	0.000	170	12	5	4	1	4	1	5	0	9	2	3	1	0	30	3	80
BJK76005	60	61	0.000	170	10	4	3	1	4	1	5	0	7	2	2	1	0	26	3	69
BJK76005	61	62	0.000	180	13	5	4	1	4	1	6	0	9	2	3	1	0	30	3	83
BJK76005	62	63.3	0.001	30	88	7	6	1	7	1	40	1	40	10	7	1	1	44	4	257
BJK76006	50	51	0.002	1940	110	8	8	1	8	2	57	1	41	12	8	1	1	62	7	326
BJK76006	62	62.5	0.049	270	108	10	8	1	9	2	50	1	49	13	10	2	1	67	7	337
BJK76006	62.5	63	0.001	430	113	10	9	1	10	2	51	1	51	14	10	2	1	68	7	351
BJK76006	67.75	68.25	0.001	140	128	10	8	2	10	2	62	1	56	15	11	2	1	66	7	382
BJK76006	68.25	68.75	0.037	110	138	11	9	1	11	2	71	1	58	16	11	2	1	69	7	408
BJK76006	68.75	69.25	0.020	120	144	12	10	2	11	2	65	1	64	17	12	2	1	74	7	425

Personal use only

BJK76006	69.25	69.75	0.019	110	136	11	9	2	11	2	60	1	59	16	12	2	1	69	7	399
BJK76006	69.75	70.25	0.016	110	136	11	10	2	12	2	62	1	61	16	12	2	1	75	7	412
BJK76006	70.25	70.75	0.022	90	123	10	8	1	10	2	58	1	53	15	11	2	1	64	6	366
BJK76006	72	73	0.000	150	41	6	5	1	5	1	17	1	20	5	5	1	1	36	4	148
BJK76006	73	74	0.000	160	14	5	4	1	4	1	6	0	9	2	3	1	0	28	3	81
BJK76007	45.25	45.75	0.020	180	185	14	11	2	14	3	79	1	79	21	15	2	1	85	9	523
BJK76011	89.8	90.3	0.031	150	225	18	16	3	18	4	94	2	94	25	19	3	2	122	14	660
BJK76013	32.4	32.9	0.001	80	119	11	8	2	11	2	53	1	58	15	12	2	1	71	9	374
BJK76013	32.9	33.8	0.001	90	124	11	8	1	11	2	60	1	56	15	12	2	1	69	8	381
BJK76013	33.8	34.3	0.002	90	133	11	8	2	11	2	61	1	61	16	12	2	1	70	8	398
BJK76013	42.4	43.4	0.002	160	141	13	10	2	13	3	65	1	68	17	15	2	1	82	9	444
BJK76013	43.4	44.4	0.002	200	176	9	6	3	11	2	80	1	73	20	13	2	1	58	6	459
BJK76013	44.4	45.6	0.005	480	169	10	7	2	11	2	75	1	74	20	14	2	1	62	6	456
BJK76013	81	81.5	0.040	100	163	14	10	2	13	3	69	1	69	20	14	2	1	84	8	473
BJK76013	81.5	82.1	0.095	90	146	12	10	2	13	2	63	1	63	17	13	2	1	72	8	425
BJK76013	82.2	83	0.038	70	132	10	8	2	11	2	55	1	60	16	13	2	1	61	7	380
BJK76013	83	84	0.008	80	136	11	10	1	11	2	59	1	59	16	12	2	1	74	9	404
BJK76013	84	84.5	0.001	60	133	10	8	1	11	2	64	1	58	16	12	2	1	62	7	387
BJK76013	84.5	85.1	0.021	150	135	12	10	2	12	2	57	1	61	16	13	2	1	75	8	407
BJK76013	85.2	85.5	0.009	90	139	10	9	1	11	2	58	1	61	16	12	2	1	66	7	396
BJK76013	85.5	86	0.002	80	138	10	9	2	11	2	61	1	58	16	12	2	1	67	7	396
BJK76013	106.4	106.9	0.008	50	130	10	9	1	10	2	58	1	59	16	12	2	1	73	7	390
BJK76013	115.4	115.9	0.040	70	113	10	9	1	10	2	51	1	52	14	10	1	1	72	7	354
BJK76013	128.9	129.4	0.009	100	125	9	7	1	10	2	57	1	54	15	10	1	1	64	6	363
BJK76013	143	143.5	0.005	50	141	8	7	1	10	2	60	1	59	16	11	2	1	53	5	377
BJK76013	143.5	144	0.066	60	180	16	14	3	17	3	72	2	81	21	19	3	2	106	13	551
BJK76013	144	145	0.048	210	142	10	8	2	11	2	58	1	60	16	12	2	1	62	8	395
BJK76013	145	146	0.066	80	201	11	9	2	12	2	80	1	79	22	14	2	1	66	8	509
BJK76013	146	147	0.006	130	143	10	8	2	12	2	56	1	65	17	13	2	1	66	7	405
BJK76013	147	147.5	0.117	320	83	16	14	3	15	3	30	2	50	11	15	3	2	98	12	357
BJK76013	147.5	148	0.029	90	146	9	7	1	10	2	59	1	59	17	11	2	1	55	6	385
BJK76013	148	149	0.005	330	126	11	8	2	10	2	59	1	55	15	10	2	1	70	7	380
BJK76013	149	149.5	0.002	8110	175	17	14	2	14	3	80	2	77	20	15	2	2	110	12	545
BJK76013	149.5	150.5	0.001	1190	109	10	9	1	9	2	53	1	49	13	10	2	1	67	7	343
BJK76013	150.5	151.5	0.001	180	127	11	9	2	11	2	54	1	56	16	13	2	1	75	7	388
BJK76013	151.5	152.2	0.002	190	150	12	10	2	12	3	69	1	65	17	12	2	1	85	8	450
BJK76013	152.2	152.7	0.002	160	114	10	8	2	11	2	53	1	51	13	11	2	1	68	8	355
BJK76013	152.7	153.7	0.001	80	122	11	9	1	11	2	56	1	54	14	12	2	1	71	9	376
BJK76014	31.15	31.65	0.031	1670	175	15	12	2	15	3	85	2	80	21	17	2	2	110	11	552
BJK76014	31.65	32.15	0.144	490	160	18	14	3	16	4	77	2	77	20	18	3	2	108	10	529
BJK76014	32.15	32.65	0.068	80	131	15	14	3	14	4	59	1	69	17	15	2	2	107	11	464
BJK76014	32.65	33.15	0.003	100	99	11	10	2	11	3	47	1	51	12	11	2	1	86	8	357
BJK76014	39.40	39.90	0.020	30	96	13	12	2	10	3	44	1	44	12	11	2	1	85	8	344
BJK76014	79.00	79.50	0.025	60	102	9	8	1	9	2	50	1	48	12	10	1	1	65	6	325
BJK76014	81.50	82.00	0.057	60	120	12	11	2	13	3	58	1	54	14	13	2	1	91	8	403
BJK76014	86.00	86.50	0.082	80	116	10	9	1	10	2	64	1	50	13	11	2	1	70	7	368
BJK76014	86.50	87.50	0.002	90	114	8	8	1	9	2	61	1	48	13	10	1	1	64	6	348
BJK76014	87.50	88.50	0.001	120	127	10	8	2	10	2	67	1	54	15	12	2	1	71	7	387
BJK76014	88.50	89.00	0.009	180	133	11	9	1	10	2	68	1	57	15	12	2	1	79	8	410
BJK76014	89.00	90.00	0.006	80	116	9	7	1	9	2	61	1	50	13	11	1	1	61	6	350
BJK76014	90.00	90.66	0.018	100	116	10	9	1	10	2	59	1	51	13	11	2	1	72	7	365
BJK76014	90.80	91.30	0.092	100	122	11	9	1	10	2	65	1	54	14	12	2	1	74	7	386
BJK76014	91.30	91.80	0.001	150	94	7	6	1	8	2	50	1	43	11	9	1	1	55	5	294
BJK77001	11.65	12.15	0.054	80	109	11	10	1	11	2	50	1	48	13	10	2	1	80	7	357
BJK77001	12.25	12.75	0.037	80	146	11	9	2	12	2	65	1	64	17	12	2	1	73	7	423
BJK77001	17.3	17.8	0.022	120	128	11	10	1	11	2	58	1	57	15	11	2	1	69	8	386
BJK77001	23.75	24.25	0.029	280	156	11	9	2	12	2	69	1	68	18	12	2	1	69	7	439
BJK77001	24.25	24.75	0.017	70	158	13	11	2	13	3	71	1	69	19	14	2	1	84	9	469

personal use only

BJK77001	24.75	25.25	0.031	40	139	11	9	1	11	2	61	1	60	17	11	2	1	68	7	401
BJK77001	33.5	34	0.015	80	128	10	9	1	10	2	59	1	56	15	10	2	1	68	7	379
BJK77001	34	34.5	0.022	80	148	11	9	2	11	2	64	1	63	17	13	2	1	73	7	424
BJK77001	34.5	35	0.059	80	121	10	8	1	9	2	60	1	53	14	10	2	1	63	6	361
BJK77001	35	35.5	0.050	90	107	10	7	1	9	2	52	1	51	13	10	2	1	65	6	336
BJK77001	35.6	36.1	0.012	90	72	11	9	1	9	2	30	1	38	10	9	2	1	70	7	272
BJK77001	52.3	52.8	0.028	90	115	10	8	1	10	2	55	1	54	14	11	2	1	68	6	359
BJK77001	52.8	53.3	0.058	90	101	11	8	2	10	2	46	1	54	13	11	2	1	68	6	334
BJK77001	127.15	127.65	0.056	100	113	9	7	1	9	2	55	1	51	14	10	2	1	62	6	344
BJK78001	160.5	161	0.001	100	139	11	8	2	10	2	68	1	59	16	12	2	1	71	7	408
BJK78001	161	162	0.004	130	122	8	6	1	8	2	63	1	48	13	9	1	1	54	5	343
BJK78001	162	163	0.031	30	104	10	8	1	10	2	47	1	46	12	9	2	1	70	7	331
BJK78001	163	164.5	0.083	20	106	13	10	1	11	3	47	1	50	13	11	2	1	84	9	362
BJK78001	164.5	165	0.002	60	111	11	9	1	10	2	51	1	48	13	10	2	1	73	8	351
BJK78001	168.5	169	0.001	70	105	10	7	1	8	2	52	1	46	12	9	1	1	60	6	322
BJK78001	169	169.5	0.002	120	98	8	7	1	8	2	47	1	44	11	9	1	1	57	6	300
BJK78001	169.5	170.5	0.060	50	111	10	8	1	9	2	58	1	48	13	9	2	1	62	6	340
BJK78001	172	172.5	0.002	60	105	10	8	1	9	2	51	1	49	12	9	1	1	64	7	329
BJK78002	41.5	42	0.002	100	116	10	9	1	9	2	58	1	52	13	10	2	1	70	7	361
BJK78002	42	42.5	0.003	90	109	9	7	1	8	2	56	1	49	12	9	1	1	64	6	337
BJK78002	42.5	43.4	0.277	180	240	19	12	3	19	3	122	1	103	28	21	3	1	94	10	680
BJK78002	44.4	45	0.003	60	109	9	7	1	8	2	55	1	48	12	9	1	1	58	6	328
BJK78002	45	46	0.084	100	155	13	9	2	12	2	75	1	68	17	13	2	1	69	7	447
BJK78002	49	50	0.091	100	146	13	10	2	12	3	72	1	67	17	13	2	1	69	8	437
BJK78002	50	51	0.007	80	103	8	6	1	8	2	49	1	46	12	9	1	1	52	5	304
BJK78002	51	51.5	0.086	100	155	13	9	2	14	2	80	1	71	18	16	2	1	70	7	463
BJK78002	51.5	52	0.055	100	178	12	9	2	11	2	81	1	75	21	14	2	1	70	7	485
BJK78002	52	53.5	0.010	60	112	11	8	1	10	2	53	1	51	13	10	2	1	66	7	347
BJK78002	53.5	54.5	0.015	80	128	12	9	2	11	2	60	1	56	15	11	2	1	76	8	394
BJK78002	54.5	55	0.002	80	90	8	7	1	8	2	45	1	41	10	8	1	1	54	5	282
BJK78002	56	56.5	0.002	80	108	10	8	1	9	2	55	1	50	13	10	2	1	65	7	342
BJK78002	56.5	57	0.005	80	117	10	7	1	9	2	55	1	52	14	10	2	1	61	6	347
BJK78002	57	58	0.044	80	127	13	9	2	11	2	57	1	58	15	12	2	1	76	8	393
BJK78002	58	58.5	0.005	100	115	12	9	2	10	2	51	1	52	14	10	2	1	74	7	363
BJK78002	74.5	75	0.001	30	114	8	6	1	7	2	60	1	45	13	8	1	1	51	6	322
BJK78002	75	76	0.046	80	123	10	8	2	9	2	58	1	55	14	10	2	1	70	7	373
BJK78002	76	76.5	0.001	80	121	10	8	2	9	2	53	1	54	14	11	2	1	61	6	354
BJK78002	135.5	136	0.001	100	138	11	8	1	10	2	63	1	59	15	11	2	1	69	7	398
BJK78002	136	137	0.013	210	130	11	8	2	11	2	58	1	60	15	12	2	1	68	7	388
BJK78002	137	137.5	0.013	120	129	11	9	2	11	2	58	1	59	15	12	2	1	80	7	400
BJK78002	137.5	138.5	0.041	50	148	16	13	2	14	4	69	1	66	19	15	3	2	106	10	487
BJK78002	138.5	139	0.002	50	136	13	10	2	13	3	63	1	63	18	14	2	1	85	8	431
BJK78003	70.00	70.50	0.001	150	119	10	8	1	9	2	61	1	53	14	11	2	1	65	7	362
BJK78003	70.50	71.00	0.004	250	116	8	8	1	8	2	56	1	51	13	10	1	1	62	6	345
BJK78003	72.00	72.50	0.003	20	114	9	8	1	9	2	57	1	50	13	10	1	1	62	6	344
BJK78003	72.50	73.00	0.002	20	110	9	8	1	9	2	59	1	50	12	10	1	1	68	6	349
BJK78003	73.00	73.50	0.002	40	115	10	8	1	10	2	59	1	55	13	11	2	1	68	6	362
BJK78003	105.75	106.25	0.001	60	110	8	7	1	9	2	53	1	49	13	10	1	1	57	6	330
BJK78003	106.25	106.75	0.006	90	99	11	10	2	11	3	48	1	48	13	10	2	1	83	8	349
BJK78003	107.50	108.50	0.001	60	130	10	9	1	11	2	64	1	60	16	12	2	1	72	7	398
BJK78003	137.50	138.00	0.001	110	120	9	8	1	10	2	61	1	52	13	11	2	1	66	7	363
BJK78003	138.00	138.50	0.037	140	150	13	11	2	13	3	72	1	64	17	14	2	1	89	9	462
BJK78003	138.50	139.00	0.009	110	128	11	9	2	10	2	60	1	55	15	12	2	1	73	8	388
BJK78004	27.5	28	0.002	60	118	9	7	1	9	2	55	1	53	14	10	1	1	68	6	357
BJK78004	28	28.5	0.028	110	116	10	8	1	10	2	55	1	56	14	11	2	1	78	7	372
BJK78004	28.5	29	0.002	140	105	10	8	1	9	2	44	1	52	14	10	2	1	73	7	340
BJK78004	57.50	58.00	0.001	250	149	11	9	2	12	2	70	1	64	17	13	2	1	74	7	434
BJK78004	58	58.5	0.014	230	126	10	8	1	11	2	64	1	56	15	12	2	1	67	7	383

personal use only

BJK78004	58.50	59.00	0.017	140	137	12	9	2	11	3	60	1	60	17	12	2	1	77	7	410
BJK78004	59.00	59.50	0.004	120	141	12	9	2	11	2	57	1	60	17	12	2	1	73	7	407
BJK78004	75.50	76.00	0.002	60	130	13	10	2	12	3	59	1	59	16	12	2	1	85	8	414
BJK78004	76.00	76.50	0.004	50	141	11	9	2	11	2	63	1	61	17	12	2	1	74	7	414
BJK78004	76.50	77.50	0.042	90	133	11	9	2	11	2	60	1	59	16	11	2	1	73	7	399
BJK78004	77.50	78.00	0.001	90	104	10	8	1	10	2	53	1	47	13	11	2	1	70	6	339
BJK78005	94.5	95	0.001	110	149	10	8	2	11	2	64	1	64	17	13	2	1	66	7	416
BJK78005	95	95.5	0.001	160	147	11	9	2	12	2	64	1	63	17	14	2	1	72	8	423
BJK78005	95.5	96	0.001	200	123	11	10	2	10	2	51	1	55	14	12	2	1	76	9	379
BJK78005	96	96.5	0.014	1590	138	10	8	2	11	2	58	1	59	16	12	2	1	64	7	389
BJK78005	96.5	97	0.003	840	125	11	9	2	10	2	55	1	58	16	12	2	1	76	7	386
BJK78005	97	97.5	0.002	1320	136	10	9	2	10	2	55	1	58	15	12	2	1	69	7	388
BJK78005	97.5	98	0.001	760	149	11	9	2	11	2	60	1	66	17	14	2	1	76	8	430
BJK78005	98	98.5	0.001	210	123	10	8	2	11	2	50	1	56	14	12	2	1	69	7	367
BJK78005	98.5	99	0.001	130	112	11	9	1	10	2	49	1	52	13	10	2	1	68	7	348
BJK78005	99	99.5	0.001	110	131	11	9	1	11	2	57	1	58	16	12	2	1	71	7	391
BJK78005	99.5	100	0.001	390	145	11	9	2	11	2	65	1	64	17	12	2	1	73	7	422
BJK78005	100	100.5	0.001	530	128	10	8	1	11	2	56	1	54	15	11	2	1	63	7	370
BJK78005	100.5	101	0.046	1590	190	18	17	2	17	4	84	2	80	21	17	3	2	125	14	596
BJK78005	101	101.5	0.030	8050	223	14	12	2	15	3	98	1	87	25	17	2	1	97	10	608
BJK78005	101.5	102	0.033	640	220	15	14	2	15	3	96	2	86	24	16	3	2	111	11	620
BJK78005	102	102.5	0.062	140	191	15	12	2	15	3	82	1	78	22	17	3	1	94	9	545
BJK78005	102.5	103	0.010	180	136	12	10	2	11	3	61	1	59	16	13	2	1	74	8	408
BJK78005	103	103.5	0.002	40	127	11	8	1	10	2	57	1	55	15	12	2	1	66	7	375
BJK78005	103.5	104.5	0.001	40	130	11	9	1	11	2	56	1	56	15	12	2	1	70	8	385
BJK78005	120.25	120.75	0.001	80	127	11	9	2	11	2	53	1	56	15	12	2	1	71	7	378
BJK78005	120.75	121.25	0.001	70	128	11	9	1	11	2	56	1	57	15	12	2	1	71	7	385
BJK78005	121.25	121.75	0.002	70	127	11	8	1	11	2	55	1	57	15	12	2	1	66	7	377
BJK78005	121.75	122.25	0.058	130	105	9	8	1	9	2	48	1	44	12	9	2	1	63	7	321
BJK78005	122.25	122.75	0.001	70	144	10	9	1	11	2	63	1	59	16	12	2	1	68	7	406
BJK78005	129	129.5	0.001	80	139	11	9	1	11	2	59	1	59	16	12	2	1	70	7	402
BJK78005	132	132.5	0.003	70	139	11	9	2	11	2	60	1	59	16	13	2	1	72	7	406
BJK78005	133	133.5	0.002	80	120	10	9	1	10	2	51	1	53	14	12	2	1	70	8	366
BJK78005	133.5	134	0.170	100	128	11	9	1	11	2	61	1	48	15	12	2	1	75	7	384
BJK78005	134	134.5	0.145	120	131	12	9	2	11	3	56	1	60	16	12	2	1	83	7	407
BJK78005	134.5	135	0.021	120	117	10	8	1	10	2	51	1	55	14	11	2	1	76	7	367
BJK78006B	13.25	14.25	0.001	90	122	11	9	2	11	2	53	1	56	15	12	2	1	72	7	377
BJK78006B	14.25	15.25	0.001	140	121	10	9	2	11	2	52	1	56	15	13	2	1	69	7	371
BJK78006B	15.25	15.75	0.001	2010	68	10	8	1	10	2	25	1	38	9	10	2	1	66	7	258
BJK78006B	15.75	16.25	0.001	5000	135	12	11	2	13	3	52	1	66	17	14	2	1	90	9	430
BJK78006B	16.25	16.75	0.001	5280	118	12	11	2	13	3	45	1	58	15	13	2	1	88	9	391
BJK78006B	16.75	17.25	0.001	5770	93	18	16	2	16	4	33	2	51	12	14	3	2	135	13	416
BJK78006B	17.25	17.75	0.001	920	120	11	9	2	12	2	50	1	55	14	12	2	1	73	8	373
BJK78006B	42.8	43.8	0.003	50	131	9	6	1	11	2	63	1	59	15	11	1	1	57	7	376
BJK78006B	43.8	44.3	0.167	40	88	57	61	3	24	13	32	6	49	12	18	7	8	391	59	830
BJK78006B	44.3	45.3	0.022	30	93	10	9	1	8	2	44	1	43	11	10	2	1	82	10	329
BJK78006B	45.3	46.3	0.002	50	130	8	6	1	9	2	61	1	55	14	11	1	1	53	6	360
BJK78006B	46.3	47.3	0.001	90	114	10	8	1	10	2	62	1	54	13	10	2	1	68	8	362
BJK78006B	47.3	48.3	0.001	60	113	9	7	2	10	2	57	1	54	14	12	2	1	62	7	351
BJK78006B	72.87	73.37	0.001	160	136	11	9	2	12	2	56	1	64	16	14	2	1	73	8	409
BJK78006B	73.37	73.87	0.001	340	173	14	11	3	15	3	74	1	77	20	16	3	1	92	9	513
BJK78006B	73.87	74.37	0.001	2130	176	23	17	4	26	5	68	2	91	22	27	4	2	154	15	636
BJK78006B	74.37	74.87	0.001	850	25	21	21	2	17	5	7	3	30	5	12	4	3	171	21	347
BJK78006B	74.87	75.37	0.001	560	16	11	10	1	9	3	4	1	17	3	7	2	1	79	9	173
BJK78006B	75.37	75.87	0.001	170	24	17	14	2	14	4	8	2	24	4	11	3	2	116	13	258
BJK78006B	75.87	76.37	0.001	90	156	18	15	2	18	4	66	2	70	18	18	3	2	126	13	533
BJK78006B	120.8	121.3	0.081	100	160	12	9	2	12	2	72	1	67	18	15	2	1	79	8	461
BJK78006B	122.5	123	0.003	660	104	8	7	1	8	2	44	1	43	12	9	1	1	58	6	306

Personal use only

BJK780068	123	123.5	0.001	9770	49	4	4	0	4	1	21	1	21	5	4	1	0	29	3	146
BJK780068	123.5	124	0.001	56400	49	4	3	0	4	1	21	0	21	5	4	1	0	28	3	146
BJK780068	124	124.5	0.001	2790	77	6	5	1	6	1	33	1	33	8	7	1	1	46	5	231
BJK780068	124.5	125	0.001	600	42	4	4	1	4	1	18	1	18	5	4	1	0	29	4	134
BJK780068	125	125.5	0.002	260	149	9	7	1	10	2	66	1	56	16	11	2	1	60	6	397
BJK780068	125.5	126	0.001	460	93	7	6	2	8	1	37	1	42	11	9	1	1	46	5	268
BJK780068	126	126.5	0.001	460	64	8	8	2	8	2	25	1	32	8	8	1	1	63	7	239
BJK780068	126.5	127	0.001	620	54	6	5	2	6	1	21	1	28	6	7	1	1	45	5	190
BJK780068	127	127.5	0.001	440	112	8	7	2	9	2	45	1	49	13	11	2	1	59	6	325
BJK780068	127.5	128	0.002	100	158	13	11	2	13	3	66	1	67	18	14	2	1	87	9	467
BJK78007	73.50	74.00	0.001	90	152	12	10	2	13	2	69	1	71	18	15	2	1	81	9	458
BJK78007	82.50	83.00	0.044	120	126	10	8	1	10	2	58	1	59	16	11	2	1	66	7	379
BJK78007	83.00	83.50	0.092	90	96	13	10	2	12	2	43	1	48	12	11	2	1	84	9	346
BJK78007	83.50	84.00	0.003	80	109	9	7	1	9	2	53	1	50	13	10	1	1	58	7	330
BJK78007	84.00	85.30	0.002	100	135	11	9	1	11	2	61	1	65	16	13	2	1	74	8	411
BJK78007	85.30	85.80	0.047	60	144	12	10	2	13	2	68	1	69	17	14	2	1	82	9	447
BJK78007	85.80	86.60	0.064	40	179	14	11	2	13	3	79	1	81	22	16	2	1	95	10	530
BJK78007	86.60	87.10	0.039	90	189	16	12	2	16	3	87	1	82	22	18	3	1	101	11	562
BJK78007	87.10	88.10	0.008	120	147	12	9	2	12	2	74	1	61	17	13	2	1	78	9	440
BJK78007	134.16	134.50	0.001	1680	151	13	10	2	13	3	70	1	68	18	14	2	1	88	10	463
BJK79003	28.25	28.75	0.001	240	103	10	9	1	10	2	46	1	55	14	11	2	1	74	6	345
BJK79003	28.75	29.25	0.001	1700	130	12	8	2	12	2	52	1	68	18	14	2	1	67	6	394
BJK79003	29.25	29.75	0.001	1170	128	13	10	2	13	3	53	1	64	17	13	2	1	81	8	407
BJK79003	85.50	86.00	0.053	90	111	11	9	1	10	2	50	1	51	14	10	2	1	70	7	350
BJK79003	87.82	88.32	0.001	100	113	10	8	1	10	2	51	1	49	14	10	2	1	67	6	345
BJK79003	88.32	88.82	0.002	15100	120	10	8	1	9	2	53	1	51	15	10	2	1	67	7	356
BJK79003	88.82	89.32	0.002	90	170	9	8	1	8	2	81	1	57	19	9	1	1	65	7	439
BJK79003	133.25	133.75	0.065	60	152	12	9	1	11	2	73	1	63	17	12	2	1	76	8	440
BJK79004	95.50	96.00	0.001	220	114	11	8	1	10	2	54	1	52	14	10	2	1	66	6	353
BJK79004	96.00	96.50	0.001	230	108	12	10	1	10	3	51	1	51	13	10	2	1	82	8	364
BJK79004	96.50	97.00	0.001	370	149	12	10	2	11	3	71	1	62	18	12	2	1	80	8	441
BJK79004	97.00	97.50	0.002	240	128	10	8	1	10	2	58	1	55	15	11	2	1	70	6	379
BJK79004	97.50	98.00	0.179	30	166	21	16	3	17	4	75	2	77	21	17	3	2	123	12	558
BJK79004	98.00	98.50	0.430	190	213	39	28	4	31	8	93	3	110	28	30	6	4	209	21	826
BJK79004	98.50	99.00	0.021	410	109	10	8	1	9	2	50	1	49	14	10	2	1	70	6	341
BJK79004	113.00	113.50	0.002	90	153	12	9	2	11	3	69	1	65	19	13	2	1	75	7	441
BJK79004	114.50	115.00	0.007	90	112	10	9	1	10	2	52	1	53	14	11	2	1	72	7	356
BJK79004	116.00	117.00	0.001	230	119	10	8	1	10	2	50	1	56	15	11	2	1	67	6	360
BJK79004	122.50	123.00	0.014	390	124	11	10	2	11	2	59	1	58	15	12	2	1	79	8	394
BJK79004	123.00	123.50	0.002	100	120	10	8	1	10	2	60	1	50	14	10	2	1	72	6	367
BJK79004	123.50	124.00	0.001	80	125	10	8	1	10	2	61	1	55	15	11	2	1	74	7	383
BJK79004	124.00	124.50	0.019	210	126	11	9	1	11	2	56	1	57	15	11	2	1	76	7	388
BJK79005	16.20	16.70	0.001	330	278	8	6	2	10	2	138	1	112	31	16	1	1	54	5	664
BJK79005	106.50	107.50	0.002	50	130	10	8	1	10	2	60	1	56	15	11	2	1	70	7	383
BJK79005	107.50	108.50	0.001	50	123	11	9	1	11	2	59	1	57	15	12	2	1	82	8	397
BJK79005	108.50	109.50	0.001	80	115	11	9	1	11	2	54	1	55	14	11	2	1	77	7	372
BJK79005	109.50	110.50	0.003	140	113	8	7	1	8	2	55	1	49	13	9	1	1	61	6	337
BJK79005	110.50	111.00	0.003	60	133	10	9	1	10	2	61	1	60	16	11	2	1	75	7	400
BJK79005	111.00	111.50	0.001	60	109	10	8	1	9	2	53	1	51	13	10	1	1	70	7	348
BJK79005	111.50	112.00	0.017	90	98	9	8	1	9	2	50	1	47	12	9	1	1	67	6	322
BJK79005	112.00	112.50	0.019	40	108	8	7	1	9	2	51	1	49	13	9	1	1	60	6	326
BJK79005	112.50	113.00	0.009	30	99	10	9	1	9	2	46	1	47	12	9	1	1	74	7	328
BJK79005	113.00	113.50	0.002	30	95	8	6	1	8	2	44	1	43	12	9	1	1	57	5	292
BJK79005	113.50	115.00	0.003	50	101	7	7	1	7	2	52	1	41	11	7	1	1	58	6	301
BJK80003	24.40	24.90	0.002	230	113	8	6	1	9	2	55	1	48	13	10	1	1	56	5	328
BJK80003	24.90	25.40	0.026	90	111	9	8	1	8	2	55	1	46	13	9	1	1	66	6	338
BJK80003	25.40	25.90	0.011	80	102	8	6	1	8	2	49	1	44	12	9	1	1	57	5	307
BJK81002	30.60	31.10	0.025	60	142	13	10	2	11	3	71	1	62	17	13	2	1	97	8	452

personal use only

BK81002	54.75	55.25	0.002	50	115	9	7	1	9	2	56	1	50	13	10	1	1	60	6	340
BK81002	55.25	55.75	0.002	30	102	6	5	1	6	1	49	1	42	12	8	1	1	45	4	284
BK81002	55.75	56.25	0.021	40	133	9	8	1	9	2	70	1	56	15	11	1	1	63	6	386
BK81002	56.25	57.25	0.047	50	117	11	9	1	10	2	56	1	52	14	10	2	1	75	7	368
BK81003	3.00	3.50	0.038	100	119	10	8	1	10	2	61	1	53	14	11	2	1	68	6	366
BK81003	3.50	4.00	0.002	150	128	11	8	1	10	2	60	1	58	15	11	2	1	74	7	388
BK81003	4.00	4.50	0.030	150	115	10	8	1	10	2	54	1	51	14	10	1	1	65	6	349
BK81003	4.50	5.00	0.004	150	120	11	8	1	10	2	56	1	51	14	11	2	1	71	6	364
BK81003	11.00	12.00	0.001	3060	60	7	5	1	6	2	29	1	29	7	6	1	1	47	5	207
BK81003	12.00	13.00	0.001	1220	70	10	8	1	9	2	29	1	39	9	9	2	1	69	6	267
BK81003	13.00	14.00	0.001	1540	73	11	8	1	10	2	30	1	40	10	9	2	1	69	6	274
BK81003	14.00	15.00	0.001	10750	86	10	8	2	9	2	36	1	43	11	9	2	1	65	6	291
BK81003	17.50	18.50	0.001	10050	121	11	9	2	11	2	50	1	56	15	11	2	1	70	7	368
BK81003	20.00	21.00	0.001	260	89	10	8	2	10	2	36	1	45	11	10	2	1	70	7	303
BK81003	21.00	22.00	0.001	310	135	14	11	2	12	3	57	1	63	16	13	2	1	89	8	427
BK81003	22.00	23.00	0.001	420	144	13	11	2	13	3	63	1	68	18	14	2	1	92	9	454
BK81003	42.00	43.00	0.001	60	110	10	9	2	10	2	47	1	53	14	11	2	1	67	7	345
BK81003	43.00	44.00	0.001	70	87	8	7	1	8	2	42	1	42	11	8	1	1	56	5	279
BK81003	44.00	45.00	0.001	90	109	9	8	1	10	2	53	1	52	13	10	2	1	65	6	343
BK81003	45.00	46.00	0.001	80	99	8	7	1	9	2	45	1	47	12	9	1	1	59	6	307
RVB75015	34.1	34.6	0.012	220	192	19	14	2	18	4	86	2	100	24	20	3	1	114	10	609
RVB75015	39	39.5	0.179	340	158	42	30	3	29	9	65	3	87	20	26	6	3	230	21	732
RVB75015	39.5	40	0.114	180	179	22	13	3	22	4	78	1	94	22	23	4	1	119	9	596
RVB75015	40	41	0.028	1330	189	15	10	2	15	3	87	1	89	22	17	2	1	94	8	555
RVB75015	41	41.5	0.040	100	213	18	12	2	17	4	99	1	93	24	20	3	1	104	9	619
RVB75015	41.5	42.5	0.016	430	203	11	8	1	12	2	98	1	79	22	14	2	1	71	6	531
RVB75015	42.5	43	0.028	5500	271	27	19	3	24	6	128	2	127	32	27	4	2	164	13	849
RVB76003	8.2	8.4	0.001	130	103	10	8	2	10	2	48	1	51	12	11	2	1	67	6	334
RVB76003	15.8	16.3	0.006	230	105	10	8	1	9	2	52	1	51	13	10	2	1	65	6	336
RVB76003	16.3	16.8	0.198	2950	211	16	10	2	17	3	99	1	95	25	20	3	1	82	8	591
RVB76003	16.8	17.3	0.050	650	198	15	12	2	16	3	92	2	91	23	18	2	1	87	9	571
RVB76003	17.3	17.7	0.060	4650	178	17	12	2	15	4	85	1	82	21	17	3	1	103	10	550
RVB76003	18.7	19.3	0.042	2040	144	16	13	2	13	4	71	2	69	17	15	2	2	106	10	485
RVB76003	19.3	19.9	0.187	470	232	14	10	2	14	3	106	1	94	25	18	2	1	83	9	614
RVB76003	19.9	20.4	0.489	420	163	10	8	1	9	2	75	1	64	18	11	2	1	64	6	435
RVB76003	20.4	20.9	0.314	120	211	9	7	1	10	2	102	1	79	22	12	1	1	62	6	528
RVB76003	20.9	21.4	0.448	40	236	10	8	1	11	2	128	1	87	24	14	2	1	79	7	612
RVB76003	21.4	21.9	0.075	120	132	13	11	1	11	3	61	1	54	15	11	2	1	105	8	430
RVB76003	21.9	23.5	0.013	70	122	10	8	0	8	2	57	1	49	14	9	1	1	69	7	360
RVB76003	23.5	24.9	0.002	300	128	9	7	1	7	2	61	1	50	14	9	1	1	60	6	357
RVB76003	24.9	25.4	0.052	90	118	6	5	1	6	1	62	1	44	13	7	1	1	43	4	315
RVB76003	25.4	25.9	0.021	200	174	8	7	1	8	2	79	1	63	19	10	1	1	61	6	440
RVB76003	26.9	27.9	0.007	500	202	14	11	2	13	3	86	1	93	24	18	2	1	84	8	562
RVB76003	27.9	28.9	0.012	80	182	12	9	1	12	3	76	1	86	22	15	2	1	75	7	505
RVB76003	28.9	29.6	0.019	170	131	12	10	1	11	3	58	1	63	16	13	2	1	83	7	412
RVB76003	29.6	30.1	0.120	1580	125	14	10	2	13	3	55	1	62	16	14	2	1	90	7	414
RVB76006	18.2	18.7	0.037	60	143	14	12	1	12	3	66	1	61	15	13	2	1	101	10	456
RVB76006	18.7	19.2	0.037	80	211	21	16	2	18	4	92	2	87	23	18	3	2	146	13	658
RVB76006	19.2	20.9	0.018	60	245	17	15	2	16	4	107	2	99	26	18	3	2	117	11	683
RVB76006	20.9	21.4	0.082	190	279	24	18	3	22	5	121	2	115	29	25	4	2	172	12	830
RVB76009	33.5	34.5	0.011	310	239	20	17	2	17	5	111	2	85	27	17	3	2	126	14	686
RVB76009	34.5	35	0.007	570	253	22	19	2	20	5	107	2	97	28	20	3	2	147	15	743
RVB76009	35	35.5	0.069	60	182	91	88	4	46	22	89	9	88	23	29	11	10	662	64	1417
RVB76009	35.5	36	0.013	110	442	33	25	4	36	7	208	3	185	52	39	5	3	232	18	1294
RVB76009	36	38	0.002	130	303	28	22	3	25	6	124	2	117	34	25	4	2	196	15	908
RVB76009	38	39.5	0.006	30	184	14	12	2	13	3	83	1	72	21	15	2	1	91	10	522
RVB76009	39.5	40	0.017	20	212	15	13	2	14	3	92	2	81	24	16	2	2	98	12	586
RVB76009	40	40.5	0.064	130	174	27	23	3	22	6	73	2	78	21	20	4	3	186	18	660

Personal use only

RVB76009	40.5	41.3	0.010	110	207	16	12	2	17	4	92	2	91	25	19	3	1	106	11	606
RVB76009	44	44.5	0.033	300	154	16	14	2	14	4	69	2	67	18	15	2	2	103	12	495
RVB76009	44.5	46.1	0.002	80	123	11	8	2	11	2	59	1	56	15	12	2	1	68	6	376
RVB76009	46.1	46.6	0.020	180	206	15	14	2	16	4	103	2	92	24	18	2	2	95	12	607
RVB76009	46.6	47.1	0.027	960	183	18	16	2	15	4	83	2	79	22	17	3	2	104	14	563
RVB76009	47.1	47.6	0.010	80	174	17	14	2	16	4	76	2	78	21	18	3	2	96	11	534
RVB76009	47.6	48.1	0.004	30	141	16	12	2	15	3	71	1	69	18	15	2	1	88	9	464
RVB76009	48.1	49.1	0.007	70	262	16	11	3	18	3	118	1	112	31	22	2	1	99	9	709
RVB76009	55.2	55.7	0.026	140	211	16	13	2	16	4	86	1	92	25	19	2	1	122	9	618
RVB76009	55.7	56.2	0.117	380	243	26	18	4	25	5	107	2	115	30	28	4	2	157	14	781
RVB76009	56.2	56.7	0.010	80	145	8	6	2	10	2	69	1	61	18	12	1	1	54	5	394
RVB77003	44.75	45.25	0.029	90	169	15	12	1	13	3	73	1	71	20	14	2	1	114	9	519
RVB77005	85.25	85.75	0.039	130	173	17	14	2	16	4	81	2	82	21	18	3	2	113	11	559
RVB77005	85.75	86.25	0.102	120	129	25	19	3	20	5	57	2	70	17	20	4	2	166	13	551
RVB77005	86.25	86.75	0.098	170	136	23	17	3	19	5	58	2	68	18	19	4	2	139	11	523
VIR80005	27.35	27.85	0.029	970	54	10	9	1	8	2	21	1	30	7	8	2	1	72	7	234
VIR80005	27.85	28.85	0.029	1040	33	8	6	1	7	2	15	1	19	5	6	1	1	55	6	164
VIR80005	28.85	29.35	0.109	1250	27	9	7	1	7	2	12	1	17	4	6	2	1	62	6	164
VIR80005	29.95	30.45	0.596	2000	39	18	14	1	16	4	17	1	25	6	11	3	2	130	10	297
VIR80005	36.5	37	0.052	800	39	10	7	1	9	2	14	1	21	5	7	2	1	63	5	186
VIR80010	31.45	31.95	0.029	530	100	11	8	1	13	2	46	1	47	12	12	2	1	74	8	340
VIR80010	31.95	32.45	0.079	400	82	8	5	2	9	2	37	1	34	9	9	1	1	48	4	251
VIR80010	32.45	32.95	0.020	210	92	4	3	1	5	1	46	0	36	10	7	1	0	30	3	240
VIR80010	32.95	33.45	0.097	260	75	8	5	1	8	1	36	1	32	9	8	1	1	50	4	240
VIR80010	33.45	33.95	0.037	210	97	5	4	1	6	1	49	0	38	11	7	1	0	33	3	257
VIR80010	54.8	55.3	0.363	590	105	18	15	1	16	4	44	2	56	14	14	3	2	142	13	449
VIR80010	55.3	55.8	0.117	700	55	12	10	1	11	3	24	1	31	7	9	2	1	87	8	263
VIR80010	55.8	56.8	0.010	360	84	12	11	0	9	3	39	2	38	10	9	2	1	97	10	327
VIR80010	56.8	57.8	0.017	380	59	12	10	1	9	3	25	1	26	7	7	2	1	86	8	257
VIR80010	57.8	58.3	0.056	610	11	5	4	1	4	1	5	1	8	2	3	1	1	35	4	86
VIR80010	58.3	58.8	0.026	240	84	8	7	1	8	2	41	1	33	9	8	1	1	58	6	268
VIR80010	82.5	83	0.117	380	51	12	10	1	11	3	20	1	29	7	8	2	1	96	7	260
VIR80012	22	23.1	0.003	250	201	23	17	3	20	5	107	2	83	23	18	4	2	172	13	693
VIR80012	23.1	25.5	0.002	160	87	17	13	1	12	4	40	2	40	11	10	3	2	114	10	365
VIR80012	25.5	26.5	0.001	310	118	14	9	4	15	3	51	1	63	16	13	2	1	84	7	401
VIR80012	28	29	0.001	20	125	18	14	0	14	4	57	2	57	16	13	3	2	114	11	450
VIR80012	31.35	32.35	0.003	90	110	16	13	0	13	4	49	2	51	14	12	2	2	104	10	402
VIR80012	32.2	33.2	0.017	910	75	20	14	1	14	4	32	2	38	10	11	3	2	128	11	365
VIR80012	32.35	33.2	0.002	30	101	17	13	0	13	4	44	1	48	13	11	2	2	108	10	387
VIR80012	49	50	0.003	720	57	12	11	1	10	3	27	1	32	8	9	2	1	92	9	274
VIR80012	51	52	0.003	910	20	6	6	1	6	1	13	3	4	4	1	1	1	52	4	127
VIR80012	52	53	0.002	430	69	9	8	1	8	2	30	1	35	9	8	1	1	67	7	257
VIR80012	60.5	61	0.018	490	68	14	11	1	12	3	30	1	38	10	11	2	1	99	9	311
VIR80012	61.5	62	0.022	610	69	8	6	2	8	2	34	1	38	9	8	1	1	60	5	252
VIR80012	68.15	68.65	0.021	1500	56	12	10	1	10	3	24	1	31	8	9	2	1	87	8	262
VIR80012	75.75	76.25	0.044	570	86	18	16	0	14	4	37	2	47	12	13	3	2	140	12	403
VIR80013	22	23	0.002	230	105	8	6	1	8	2	51	1	48	13	10	1	1	54	5	311
VIR80013	23	23.5	0.029	370	82	10	8	1	9	2	39	1	36	10	9	2	1	68	7	286
VIR80013	24.1	24.8	0.022	620	44	9	7	1	8	2	20	1	22	6	6	1	1	60	6	195
VIR80013	25.3	25.9	0.147	750	78	8	7	1	8	2	30	1	39	10	9	1	1	60	5	258
VIR80013	26.3	26.8	0.660	560	31	9	8	1	7	2	21	1	15	3	5	1	1	60	6	172
VIR80013	26.8	27.8	0.025	570	22	7	6	1	6	2	8	1	14	3	4	1	1	46	5	125
VIR80013	27.8	29.8	0.101	690	53	9	8	1	8	2	24	1	26	7	7	1	1	64	7	219
VIR80013	29.8	30.5	0.075	630	61	9	7	1	8	2	26	1	28	8	7	1	1	64	6	231
VIR80013	30.5	33	0.047	530	16	6	5	1	5	1	6	1	10	2	4	1	1	42	4	103
VIR80013	33	33.5	0.101	360	62	7	6	1	7	2	22	1	35	8	9	1	1	48	8	217
VIR80013	39.3	39.8	0.212	710	17	10	7	2	9	2	5	1	16	3	6	2	1	73	5	159
VIR80013	50	51	0.038	730	25	7	6	1	7	1	10	1	17	4	5	1	1	48	4	139

personal use only

VIR80013	51	52	0.044	440	58	12	10	1	11	3	23	1	35	8	9	2	1	87	9	271
VIR80014	69.5	70	0.005	530	21	7	7	1	6	2	10	1	14	3	4	1	1	54	5	136
VIR80014	70	70.5	0.070	580	36	7	6	1	6	2	17	1	22	5	6	1	1	52	5	167
VIR80014	70.5	71	0.010	2300	63	4	3	1	5	1	31	1	34	8	6	1	0	28	3	190
VIR80014	71	71.5	0.047	790	59	14	12	1	13	3	25	1	35	8	11	2	1	99	8	292
VIR80014	71.5	72	0.033	1350	88	11	9	1	9	2	39	1	45	11	10	2	1	74	7	309
VIR80014	72	72.5	0.038	310	95	14	11	1	12	3	40	1	50	13	12	2	1	106	9	371
VIR80014	72.5	73	0.026	170	77	10	8	1	8	2	35	1	37	10	8	2	1	74	7	282
VIR80014	73	73.5	0.045	370	69	11	9	1	9	2	33	1	35	9	9	2	1	76	8	273
VIR80015	36.75	37.25	0.062	250	93	5	4	2	6	1	45	0	42	12	8	1	0	31	3	253
VIR80015	47.25	48.25	0.009	200	88	3	3	1	5	1	42	0	39	11	6	1	0	24	2	226
VIR80015	48.25	49.25	0.060	240	87	4	3	1	5	1	43	0	37	11	6	1	0	27	2	229
VIR80015	49.25	49.75	0.172	290	94	5	4	1	6	1	43	0	41	11	7	1	0	34	3	251
VIR80015	49.75	50.25	0.092	300	91	5	4	1	6	1	46	1	41	11	7	1	1	40	3	259
VIR80015	50.25	51.25	0.003	210	96	5	4	1	5	1	46	0	42	12	7	1	0	32	3	255
VIR80015	51.25	52.25	0.003	170	92	5	4	1	6	1	44	1	40	11	7	1	0	32	3	248
VIR81001	42.25	42.75	0.020	550	91	12	10	1	10	3	42	1	41	11	10	2	1	88	9	331
VIR81001	42.75	43.25	0.111	850	41	14	12	1	14	3	16	2	27	6	10	2	2	98	14	263
VIR81001	43.25	43.75	0.040	420	12	7	6	1	6	1	4	1	10	2	4	1	1	47	5	108
VIR81001	70	70.5	0.043	90	147	18	16	1	16	4	66	2	64	17	15	3	2	133	13	517
VIR81001	70.5	71	0.027	150	130	13	11	0	13	3	61	1	57	15	13	2	1	98	9	428
VIR81001	71	71.5	0.007	100	107	13	11	0	11	3	52	1	46	12	11	2	1	92	8	370
VIR81001	71.75	72.25	0.040	290	79	9	8	1	9	2	36	1	36	9	8	1	1	63	6	270
VIR81001	72.25	72.75	0.458	740	35	9	7	1	9	2	14	1	23	5	8	2	1	66	5	188
VIR81001	72.75	73.25	0.004	170	99	16	13	1	14	3	44	1	46	12	12	3	2	112	10	386
VIR81001	77	77.5	0.026	560	26	6	5	1	6	1	11	1	15	4	4	1	1	42	4	127
VIR81001	77.5	78	0.002	480	9	4	3	1	4	1	3	0	8	2	3	1	0	28	2	71
VIR81001	78	78.5	0.005	470	8	5	4	1	4	1	3	0	7	1	3	1	0	31	3	72
VIR81001	78.5	79	0.092	1420	64	12	11	1	11	3	28	1	31	8	9	2	1	83	8	273
VIR81001	85.75	86.25	0.079	100	119	15	14	0	14	3	53	1	51	14	12	2	2	102	12	416
VIR81002	71.4	71.9	0.084	180	91	8	6	1	9	2	43	1	39	11	9	1	1	60	4	285
VIR81002	71.9	72.4	0.190	210	85	6	5	1	7	1	42	1	37	10	8	1	1	41	4	248
VIR81002	72.4	72.9	0.008	200	80	6	4	1	7	1	42	1	34	9	7	1	1	39	3	236
VIR81002	105	105.5	0.002	100	87	4	3	1	5	1	41	0	37	10	7	1	0	30	3	231
VIR81002	105.5	106	0.072	110	82	4	3	1	6	1	42	0	33	9	6	1	0	30	2	221
VIR81002	106	106.5	0.001	110	91	5	3	1	6	1	45	0	39	10	7	1	0	31	3	243
VIR81002	120.7	121.2	0.067	2890	86	11	9	1	10	2	39	1	40	10	10	2	1	73	7	301
VIR81002	122.5	123	0.001	450	48	7	6	1	6	2	20	1	23	6	6	1	1	50	5	182

personal use only

Appendix 4

Newly verified historical geochemical assay data. Additional non verified data not included.

Hole ID	From	To	US08 PPM	Cu ppm	Pb ppm	Zn ppm
BKJ76013	81	81.5	791	35	203	166
BKJ76013	81.5	82	305	33	97	89
BKJ76013	82	83	1692	31	387	114
BKJ76013	83	84	72	23	27	75
BKJ76013	84	84.5	32	18	20	74
BKJ76013	84.5	85	2252	28	70	114
BKJ76013	85	85.5	1730	22	362	121
BKJ76013	85.5	86	39	19	20	70
BKJ76013	143	143.5	105	21	65	73
BKJ76013	143.5	144	775		151	98
BKJ76013	144	145	581		243	224
BKJ76013	145	146	837	13	216	109
BKJ76013	146	147	147	16	65	145
BKJ76013	147	148	812	12	207	209
BKJ76013	149	149.5	32	660	104	5000
BKJ76013	148	149	236	59	43	226
BKJ76014	78	78.5	0	9	30	71
BKJ76014	78.5	78.5	430	15	93	62
BKJ76014	79.5	81.5	21	15	30	58
BKJ76014	81.5	82.5	292	13	77	75
BKJ76014	82.5	83	25	8	44	105
BKJ76014	85.5	86	33	14	42	82
BKJ76014	86	87	213	17	77	81
BKJ76014	87	88.5	29	19	33	123
BKJ78001	169.5	161	21	50	29	80
BKJ78001	161	162	47	25	37	140
BKJ78001	162	163	367	27	130	72
BKJ78001	163	164.5	1021	23	205	71
BKJ78001	164.5	165	22	18	22	88
BKJ78001	168.5	169	26	13	24	76
BKJ78001	169	169.5	26	27	48	143
BKJ78001	169.5	170.5	836	12	199	60
BKJ78001	170.5	172	3982	20	820	94
BKJ78001	172	172.5	28	10	36	93
BKJ78002	41.4	42	62	42		
BKJ78002	42	42.5	80			
BKJ78002	42.5	44	1678			
BKJ78002	44	45	34			
BKJ78002	45	46	908			
BKJ78002	46	47.5	3118			
BKJ78002	47.5	49	2241			
BKJ78002	49	50	1145			
BKJ78002	50	51	149			
BKJ78002	51	51.5	784			
BKJ78002	51.5	52	540			
BKJ78002	52	53.5	166			
BKJ78002	53.5	54.5	215			
BKJ78002	54.5	55	39			
BKJ78002	55	56.5	38			
BKJ78002	56.5	57	72			
BKJ78002	57	58	390			
BKJ78002	58	58.5	60			
BKJ78002	74.5	75	27			
BKJ78002	75	76	1913			
BKJ78002	76	76.5	25			
BKJ78002	135.5	136	38			
BKJ78002	136	137	140			
BKJ78002	137	137.5	353			
BKJ78002	137.5	138.5	237			
BKJ78002	138.5	138	29			
BKJ78003	70	70.5	20		33	199
BKJ78003	70.5	71	137		68	299
BKJ78003	71	72	677		162	141
BKJ78003	72	72.5	68		34	61
BKJ78003	72.5	73	35		24	36
BKJ78003	73	73.5	94		23	53
BKJ78003	106	106.5	13		35	62
BKJ78003	106.5	107.5	2578		430	112
BKJ78003	107.5	108	19		28	125
BKJ78003	108	108.5	22		22	70
BKJ78003	137.5	138	14		40	153
BKJ78003	138	138.5	458		128	175
BKJ78003	138.5	139	428		120	151
BKJ78004	27.5	28	32	35	33	65
BKJ78004	28	28.5	758	44	140	147
BKJ78004	28.5	29	27	27	32	138
BKJ78004	29	58	20	31	28	297
BKJ78004	58	58.5	231	22	53	218
BKJ78004	58.5	59	261	22	76	170
BKJ78004	59	59.5	66	22	41	133
BKJ78004	59.5	76	21	30	23	40
BKJ78004	76	76.5	66	14	41	55
BKJ78004	76.5	77.5	287	51	118	98
BKJ78004	77.5	78	21	19	37	92
BKJ78005	96	96.5	22	30	72	1757
BKJ78005	96.5	97.5	74	25	55	837
BKJ78005	97.5	98	20	15	30	982
BKJ78005	98	100	15	15	30	189
BKJ78005	100	100.5	28	18	43	363
BKJ78005	100.5	102	459	24	226	5000
BKJ78005	102	103	353	18	95	155
BKJ78005	103	103.5	33	18	24	76
BKJ78005	110.5	111	1168	8	32	68
BKJ78005	111	112	27	18	23	47
BKJ78005	112	112.5	24	13	24	71
BKJ78005	120.5	121	13	13	37	96
BKJ78005	121	122	265	15	81	99
BKJ78005	122	123	136	10	48	93
BKJ78005	123	123.5	15	10	33	95
BKJ78005	129	129.5	2242	20	383	114
BKJ78005	129.5	132	20	31	33	103
BKJ78005	132	135	60	17	34	79
BKJ78005	135	135.5	21	11	46	103
BKJ78005	135.5	136	17	11	61	158
BKJ79003	58.5	59	21			92
BKJ79003	59	60	54			94
BKJ79003	60	62.5	22			92
BKJ79003	62.5	63.5	81			117
BKJ79003	63.5	65	78			148
BKJ79003	65	66	28			83
BKJ79003	68	68	26			257
BKJ79003	68.5	69.5	107			188
BKJ79003	69.5	70	21			106
BKJ79003	84	84.5	41			387
BKJ79003	84.5	85.5	83			119
BKJ79003	85.5	86.5	478		117	76

For personal use only



BK79003	86.5	87.5	106			73
BK79003	87.5	88	21	270		741
BK79004	96	96.5	22			214
BK79004	96.5	97.5	18			470
BK79004	97.5	98.5	4702		848	107
BK79004	98.5	99.5	97			169
BK79004	99.5	100	60			96
BK79004	100	100.5	38			101
BK79004	113	113.5	32			99
BK79004	113.5	114.5	1071		177	70
BK79004	114.5	115	156			92
BK79004	115	115.5	35			93
BK79004	120.5	121	14			67
BK79004	121	122	1662		346	140
BK79004	122	123	78			225
BK79004	123	124.5	196			138
BK79004	124.5	125	27			85
BK79004	125	125.5	21			168
BK79005	111	111.5	22	540		955
BK79005	111.5	112.5	208	170		481
BK79005	112.5	113	107	107		153
BK80003	109.8	110.8	7858			
BK80003	112.8	113.91	39			
BK77001	127.74	127.83	4623			
BK77001	128.683	129.026	1167			
BK78007	81.5	82	18		37	162
BK78007	82	83.5	334		96	196
BK78007	83.5	84	52		40	133
BK78007	84	85	21		37	155
BK78007	85	86	731		161	95
BK78007	86	87.5	256		79	116
BK78007	87.5	88	29		45	213
RVB76003	15.6	16.1	45	21	92	355
RVB76003	16.1	16.3	810	22	226	168
RVB76003	16.3	16.5	9128	119	2285	3406
RVB76003	16.5	17	1156	17	524	420
RVB76003	17	17.4	597	24	407	1288
RVB76003	17.4	17.7	825	17	439	5734
RVB76003	17.7	19.3	454	95	357	3325
RVB76003	19.3	20	2098	179	536	266
RVB76003	20	20.2	7914	630	4918	1093
RVB76003	20.2	21	3104	182	529	193
RVB76003	21	21.2	13028	187	635	102
RVB76003	21.2	21.6	1224	173	165	63
RVB76003	21.6	25	59	171	85	169
RVB76003	25	25.4	1004	230	975	113
RVB76003	25.4	25.5	10950	227	7791	613
RVB76003	25.5	27.8	200	351	341	168
RVB76003	27.8	30	3055	47	1066	594
RVB76003	30	30.5	479	35	166	1281
RVB76009	32.6	35.1	140			
RVB76009	35.1	35.45	1034			
RVB76009	35.45	39.7	84			
RVB76009	39.7	41.15	0			
RVB76009	41.15	44.2	52			
RVB76009	44.2	44.37	1245			
RVB76009	44.37	46.25	44			
RVB76009	46.25	47.35	396			
RVB76009	47.35	55.15	118			
RVB76009	55.15	56.8	588			
RVB76009	56.8	67	98			
RVB76009	69	69.5	32			
RVB77005	84.3	84.8	35			
RVB77005	84.8	85.3	113			
RVB77005	85.3	85.8	520			
RVB77005	85.8	86.5	1029			
RVB77005	86.5	87	32			
RVB77005	87	87.5	34			

For personal use only



Appendix 5 JORC Code, 2012 Edition - Table 1
Section 1 – Sampling Techniques and Data

Criteria	JORC Code explanation	Commentary
Sampling techniques	Nature and quality of sampling (e.g., cut channels, random chips, or specific specialised industry standard measurement tools appropriate to the minerals under investigation, such as down hole gamma sondes, or handheld XRF instruments, etc.). These examples should not be taken as limiting the broad meaning of sampling.	<p>The sampling described in this announcement refers historical 46 mm diameter diamond drill core from select drillholes of the Bjorkberget, Virka and Ravaberget projects drilled by the Swedish Geological Survey (SGU) between 1975 and 1981.</p> <p>New samples were completed on available half core over selected interval. Core radiometry was systematically scanned using a handheld RS-111 scintillometer.</p> <p>Historical sampling was completed by taking half core, with intervals selected by geological logging and downhole gamma probe results.</p>
	Include reference to measures taken to ensure sample representivity and the appropriate calibration of any measurement tools or systems used.	<p>New sampling of historical cores were measured and marked at 1m intervals as no depth marks were displayed on core trays. Core radiometry was systematically scanned using a handheld RS-111 scintillometer. Some intervals were not sampled due to insufficient core remaining in the box (1/4 core is to be left in the core tray at minimal).</p> <p>No records have been recovered to understand what measures were taken in original historical sampling, however core preservation was good and historic metre marks remain and correlate well.</p>
	Aspects of the determination of mineralisation that are Material to the Public Report. In cases where 'industry standard' work has been done this would be relatively simple (e.g., 'reverse circulation drilling was used to obtain 1 m samples from which 3 kg was pulverised to produce a 30 g charge for fire assay'). In other cases, more explanation may be required, such as where there is coarse gold that has inherent sampling problems. Unusual commodities or mineralisation types (e.g., submarine nodules) may warrant disclosure of detailed information.	<p>New sampling of historical diamond core was sampled with industry standard sampling techniques where core trays were shipped to ALS Pitea for sample preparation. Core samples were cut with an automated core saw at the laboratory facilities and core samples were prepped using a crusher/rotary splitter (PREP31Y). Pulp material was analysed using sodium peroxide fusion for detection of selective elements with ICP-AES or ICP-MS finish (ALS codes: ME-MS89L and ME-ICP81). The sample preparation and analysis methods are considered industry standard for the style of mineralisation being tested.</p> <p>Limited records exist documenting historical process, however all work was completed by government body Swedish Geological Survey (SGU).</p>
Drilling techniques	Drill type (e.g., core, reverse circulation, open-hole hammer, rotary air blast, auger, Bangka, sonic, etc.) and details (e.g., core diameter, triple or standard tube, depth of diamond tails, face-sampling bit or other type, whether core is oriented and if so, by what method, etc.).	Historical drilling was conducted as 46 mm diameter vertical and angled diamond coring by the Swedish Geological Survey between 1975 and 1981. No information is available on the type of core rig used at the time. Historical core was not orientated.
Drill sample recovery	Method of recording and assessing core and chip sample recoveries and results assessed.	Core recovery data was not available from historical drill logs. However, upon geological relogging of the historical core, core recovery was reconciled against driller's depth block. Core recovery was generally very good and within acceptable limits (>95%).
	Measures taken to maximise sample recovery and ensure representative nature of the samples.	No information was available in historical logs regarding maximising sample recovery. However, core recovery was generally within acceptable standards.
	Whether a relationship exists between sample recovery and grade and whether sample bias may have occurred due to preferential loss/gain of fine/coarse material.	Lithologies drilled at the Projects were overall very competent granites and metamorphosed sedimentary and volcanic units. Very good recovery was observed during the historical core re-logging



		program therefore no known bias is interpreted to exist.
Logging	Whether core and chip samples have been geologically and geotechnically logged to a level of detail to support appropriate Mineral Resource estimation, mining studies and metallurgical studies.	Historical drill core was geologically logged at the time by SGU geologists and more recently by Basin Energy geologists. Geological logging comprised recording lithologies, alteration, mineralisation and structures. The historical cores were not logged to a level of detail sufficient to support mineral resource estimation and mining studies.
	Whether logging is qualitative or quantitative in nature. Core (or costean, channel, etc.) photography.	Logging is qualitative in nature. Wet and dry high resolution core photographs are taken of every core tray and additional detailed photographs are taken on select areas of interest.
	The total length and percentage of the relevant intersections logged.	All the drill core sections relevant to this announcement have undergone geological and structural logging by Basin Energy geologists.
Sub-sampling techniques and sample preparation	If core, whether cut or sawn and whether quarter, half or all core taken.	New samples reported in his announcement refer to sampling of 46 mm diameter full core and half core to produce ¼ core sample size. The core was cut with an automated core saw by ALS laboratory personnel in Piteå. Historical sampling was half core.
	If non-core, whether riffled, tube sampled, rotary split, etc. and whether sampled wet or dry.	Not applicable.
	For all sample types, the nature, quality and appropriateness of the sample preparation technique.	The sampling protocol implemented for the new samples is appropriate to industry standards in relation to core sampling. Sampling protocol implemented by the original sampling was in line with historic procedure by the Swedish Geological Survey at the time of drilling.
	Quality control procedures adopted for all sub-sampling stages to maximise representivity of samples.	QAQC protocols for the new data included the use of ALS laboratory standards. No field duplicate samples were collected due to limited size of the core available. Minimal historic QAQC data has been found to date, however resampling and assaying was undertaken by Basin to verify the historical information
	Measures taken to ensure that the sampling is representative of the in-situ material collected, including for instance results for field duplicate/second-half sampling.	No field duplicate samples were collected in the new data due to limited size of the core available. No known historical duplicates were completed. Basin has duplicated 61 identical historic sample intervals, see below.
	Whether sample sizes are appropriate to the grain size of the material being sampled.	The sample sizes for the new samples are appropriate for the grain size and lithology type of the material. Sampling intervals were a minimum of 0.5 m. Historic sampling was varied in sizes, but seen as relevant to the style of mineralisation being explored for.
Quality of assay data and laboratory tests	The nature, quality and appropriateness of the assaying and laboratory procedures used and whether the technique is considered partial or total.	Samples for the new data were prepared, crushed and pulverised using ALS standard practices. Pulp material was analysed using sodium peroxide fusion for detection of selective elements with ICP-AES or ICP-MS finish (ALS codes: ME-MS89L and ME-ICP81). The sample preparation and analysis methods are considered industry standard for the style of mineralisation being tested. Historical samples were analysed by XRF, however minimal information is available on the preparation work completed, nor is this information being reported..
	For geophysical tools, spectrometers, handheld XRF instruments, etc., the parameters used in determining the analysis including instrument make and model, reading times, calibrations factors applied and their derivation, etc.	No geophysical tools or portable XRF instruments were utilised for the new sampling other than for cursory review. A calibrated RS 111 was used to scan the core whilst detailed logging occurred. Downhole gamma was used in the historic drilling, however these results have not been relied upon and no verification has been completed. Limited calibration or method details of this have been located.
	Nature of quality control procedures adopted (e.g., standards, blanks, duplicates, external	No field duplicates or blanks were inserted in the new sampling; however, laboratory

For personal use only



For personal use only

<p>laboratory checks) and whether acceptable levels of accuracy (i.e., lack of bias) and precision have been established.</p>	<p>standards/blanks/repeats were utilised for analysis purposes. The Competent Person reviewed the laboratory protocols.</p> <p>Extensive ¼ core duplicates of historical data were taken, to establish reliability of original SGU assay data not previously reported. 61 identical intervals to historic data were subsampled (significant additional non identical sample intervals were also collected). A scatter graph was produced comparing the 2 data sets, which produced reasonable correlation. A small bias for the historical data to overestimate in samples under 200 ppm U3O8 was identified (approximately 20% however for samples above 200 ppm U3O8 correlation improved with no uniform bias and repeatability observed typically +/-15%. Basin deems these historic samples to be suitable quality for reporting exploration results, with an external independent review verifying this interpretation.</p>
<p>Verification of sampling and assaying</p> <p>The verification of significant intersections by either independent or alternative company personnel.</p>	<p>Significant mineralised intersections in the reported sampling have been verified by multiple company personnel. An external review was conducted by an independent competent person to review the historic data for suitability of reporting.</p>
<p>The use of twinned holes.</p>	<p>No twins holes are known to the project areas.</p>
<p>Documentation of primary data, data entry procedures, data verification, data storage (physical and electronic) protocols.</p>	<p>All data from the new sampling was recorded digitally and imported into a validated database. Verified assay data is received directly from the laboratory, and stored on company storage drives.</p> <p>Original data was recorded via field logging sheets, which were later scanned and stored by the Swedish Geological Survey.</p>
<p>Discuss any adjustment to assay data.</p>	<p>Where uranium was reported for both new and historic data, Basin has converted this to uranium oxide by applying the following formulae:</p> $U \text{ ppm} * 1.17924 = U_3O_8 \text{ ppm}$ <p>Regarding rare earth elements, the element values were converted to oxides. The conversion formulas for each element are included in the list below:</p> $Ce \text{ ppm} * 1.2284 = CeO_2 \text{ ppm}$ $Dy \text{ ppm} * 1.1477 = Dy_2O_3 \text{ ppm}$ $Er \text{ ppm} * 1.435 = Er_2O_3 \text{ ppm}$ $Eu \text{ ppm} * 1.1579 = Eu_2O_3 \text{ ppm}$ $Gd \text{ ppm} * 1.1526 = Gd_2O_3 \text{ ppm}$ $Ho \text{ ppm} * 1.1455 = Ho_2O_3 \text{ ppm}$ $La \text{ ppm} * 1.1728 = La_2O_3 \text{ ppm}$ $Lu \text{ ppm} * 1.1372 = Lu_2O_3 \text{ ppm}$ $Nd \text{ ppm} * 1.1664 = Nd_2O_3 \text{ ppm}$ $Pr \text{ ppm} * 1.2082 = Pr_6O_{11} \text{ ppm}$ $Sm \text{ ppm} * 1.1596 = Sm_2O_3 \text{ ppm}$ $Tb \text{ ppm} * 1.1762 = Tb_4O_7 \text{ ppm}$ $Tm \text{ ppm} * 1.1421 = Tm_2O_3 \text{ ppm}$ $Y \text{ ppm} * 1.2699 = Y_2O_3 \text{ ppm}$ $Yb \text{ ppm} * 1.1387 = Yb_2O_3 \text{ ppm}$ <p>Rare earth oxide is the industry accepted form for reporting rare earth elements. The following calculations are used for compiled rare earth oxides into their reporting and evaluation groups:</p> <p>TREO (Total Rare Earth Oxide) = CeO₂ + Dy₂O₃ + Er₂O₃ + Eu₂O₃ + Gd₂O₃ + Ho₂O₃ + La₂O₃ + Lu₂O₃ + Nd₂O₃ + Pr₆O₁₁ + Sm₂O₃ + Tb₄O₇ + Tm₂O₃ + Y₂O₃ + Yb₂O₃</p> <p>LREO (Light Rare Earth Oxide) = CeO₂ + La₂O₃ + Nd₂O₃ + Pr₆O₁₁ + Sm₂O₃</p> <p>HREO (Heavy Rare Earth Oxide) = Dy₂O₃ + Er₂O₃ + Eu₂O₃ + Gd₂O₃ + Ho₂O₃ + Lu₂O₃ + Tb₄O₇ + Tm₂O₃ + Y₂O₃ + Yb₂O₃</p>



Location of data points	Accuracy and quality of surveys used to locate drill holes (collar and down-hole surveys), trenches, mine workings and other locations used in Mineral Resource estimation.	Legacy drillhole coordinates have not yet been verified in the field due to ground snow cover at the time the work was completed.
	Specification of the grid system used.	Drillholes are reported in SWEREF 99 system.
	Quality and adequacy of topographic control.	The topographic control is considered adequate at this stage of the program.
Data spacing and distribution	Data spacing for reporting of Exploration Results.	Historical drillhole spacing is variable and generally of an ad-hoc nature. The average spacing between drillholes at Rava is 40 to 80 m. The average spacing between drillholes at Virka is 25 to 80 m. The average spacing between drillholes at Bjork is 50 to 100m. Occasional infill drillholes are noted within the project areas.
	Whether the data spacing and distribution is sufficient to establish the degree of geological and grade continuity appropriate for the Mineral Resource and Ore Reserve estimation procedure(s) and classifications applied.	A mineral resource has not been determined.
	Whether sample compositing has been applied.	Sample compositing has been applied were justified for reporting purposes.
Orientation of data in relation to geological structure	Whether the orientation of sampling achieves unbiased sampling of possible structures and the extent to which this is known, considering the deposit type.	The reported historical drillholes have been mostly oriented to intersect favourable lithologies, structures at a high angle based on projections from field mapping and geophysical imaging interpretation.
	If the relationship between the drilling orientation and the orientation of key mineralised structures is considered to have introduced a sampling bias, this should be assessed and reported if material.	No biases have been identified at this stage.
Sample security	The measures taken to ensure sample security.	For Basin samples, drill core sample intervals were marked by Basin Energy's geologists and reported on sample lists. Core trays were freighted to ALS Pieta using SGU's chain of custody protocols, which are considered industry standards. Verification of sample dispatches was conducted by the laboratory personnel upon receipt of the core trays. No information is available for the historical procedure.
Audits or reviews	The results of any audits or reviews of sampling techniques and data.	An external review was conducted by an independent competent person to review the historic data for suitability of reporting.

Section 2 – Reporting of Exploration Results

Criteria	JORC Code explanation	Commentary
Mineral tenement and land tenure status	Type, reference name/number, location and ownership including agreements or material issues with third parties such as joint ventures, partnerships, overriding royalties, native title interests, historical sites, wilderness or national park and environmental settings.	Virka nr 100, Björkberget nr 100 and Rävaberget nr 200 are granted exploration licences 100% owned by Normetco AS, a wholly owned subsidiary of Basin Energy. A few nature reserves are noted within the Project areas.
	The security of the tenure held at the time of reporting along with any known impediments to obtaining a license to operate in the area.	As outlined in previous Basin Energy announcements, Sweden has a moratorium on uranium exploration and mining as per the current Mineral Act. A government enquiry has recommended the removal of this moratorium however consultation is ongoing therefore no certainty can be taken as to the ability to mine or explore for the extraction of uranium. Tenures reported are in good standing and 100% owned by Basin Energy Ltd and its wholly-owned subsidiary Normetco AS.
Exploration done by other parties	Acknowledgment and appraisal of exploration by other parties.	All exploration to date has been completed by various historic third parties with results reviewed by Basin Energy personnel.
Geology	Deposit type, geological setting and style of	The Virka, Rävaberget, Björkberget and Trollberget projects projects are located west of the

For personal use only

	<p>mineralisation.</p>	<p>Caledonides, within the Arvidsjaur-Arjeplog region in northern Sweden.</p> <p>Broadly speaking the Arvidsjaur-Arjeplog region is part of the Fennoscandian Shield, characterised by Proterozoic bedrock with extensive granitoid intrusions and metavolcanic sequences. The area hosts significant mineralisation, particularly in volcanogenic massive sulphide (VMS), orogenic gold, and intrusion-related deposits, with uranium and rare earth element (REE) potential. Structurally, it has undergone multiple deformation events linked to the Svecofennian orogeny, influencing mineralisation and tectonic settings.</p> <p>Styles of mineralisation on the Projects is to be confirmed based on early status of exploration. The projects are deemed prospective for several commodities including (but not limited to) U, Cu, Mo, Pb, Zn, Au, Ag, REE.</p>
Drill hole information	<p>A summary of all information material to the understanding of the exploration results including a tabulation of the following information for all Material drill holes:</p> <ul style="list-style-type: none"> o easting and northing of the drill hole collar o elevation or RL (Reduced Level – elevation above sea level in metres) of the drill hole collar o dip and azimuth of the hole o down hole length and interception depth o hole length. 	<p>Tables comprising the collar details and significant mineralised intercepts are included in Appendix 2 and 3 of this announcement.</p>
	<p>If the exclusion of this information is justified on the basis that the information is not Material and this exclusion does not detract from the understanding of the report, the Competent Person should clearly explain why this is the case.</p>	<p>The material nature of this announcement is intended to specifically relate to the recognition of combined, polymetallic and critical mineral mineralisation which is considered to be of potentially greater economic value with potentially underground mineable grades, and of potentially greater strategic significance than single-element only intercepts. Inclusion of single-element significant intercepts would likely detract from the understanding of the intention of this announcement.</p>
Data aggregation methods	<p>In reporting Exploration Results, weighting averaging techniques, maximum and/or minimum grade truncations (e.g., cutting of high grades) and cut-off grades are usually Material and should be stated.</p>	<p>Exploration drill results are reported by length weighted average grades.</p>
	<p>Where aggregate intercepts incorporate short lengths of high grade results and longer lengths of low grade results, the procedure used for such aggregation should be stated and some typical examples of such aggregations should be shown in detail.</p>	<p>Short intervals of high grade that have a material impact on overall intersections are reported as separate (included) intervals.</p>
	<p>The assumptions used for any reporting of metal equivalent values should be clearly stated.</p>	<p>No metal equivalence is reported.</p>
Relationship between mineralisation widths and intercepts lengths	<p>These relationships are particularly important in the reporting of Exploration Results.</p>	<p>Downhole lengths are reported, true width is not known.</p>
	<p>If the geometry of the mineralisation with respect to the drill hole angle is known, its nature should be reported.</p>	<p>The geometry of the mineralisation with respect to the drillhole angle is not known. The projects are still at an early stage of exploration. Further drilling is needed to better define the orientation of the mineralisation.</p>
	<p>If it is not known and only the down hole lengths are reported, there should be a clear statement to this effect (e.g., 'down hole length, true width not</p>	<p>Drilling was exploration in nature, with not enough data to establish true widths of mineralisation observed.</p>



For personal use only

	known').	
Diagrams	Appropriate maps and sections (with scales) and tabulations of intercepts should be included for any significant discovery being reported These should include but not be limited to a plan view of drill hole collar locations and appropriate sectional views.	Maps and tables have been included in the body of this announcement.
Balanced Reporting	Where comprehensive reporting of all Exploration Results is not practicable, representative reporting of both low and high grades and/or widths should be practiced to avoid misleading reporting of Exploration Results.	It is the Competent Person's opinion that a balanced summary of exploration results has been reported.
Other substantive exploration data	Other exploration data, if meaningful and material, should be reported including (but not limited to): geological observations; geophysical survey results; geochemical survey results; bulk samples – size and method of treatment; metallurgical test results; bulk density, groundwater, geotechnical and rock characteristics; potential deleterious or contaminating substances.	No other exploration data is considered meaningful and material to this announcement.
Further work	The nature and scale of planned further work (e.g., tests for lateral extensions or depth extensions or large-scale step-out drilling).	Data aggregation of the reported re-assay results are currently being compiled in the projects' integrative 2D GIS system. Follow-up mapping and sampling across the Projects is proposed for the northern hemisphere summer-fall months. Project-scale airborne geophysics survey (magnetics, radiometrics at minima) across the Projects is proposed contingent to mapping programs. Drilling programs are warranted to follow-up historical results and the Company's exploration efforts to date.
	Diagrams clearly highlighting the areas of possible extensions, including the main geological interpretations and future drilling areas, provided this information is not commercially sensitive.	Maps including the location of the assayed historical drillholes are included in the body of this announcement.

